



NATIONAL SPATIAL PLAN GUIDELINES FOR BARINGO COUNTY

Optimal productivity, sustainability, efficiency and
equity in use of our land territorial space



JUNE 2022

MINISTRY OF LANDS AND PHYSICAL PLANNING

DEPARTMENT OF PHYSICAL PLANNING

Foreword

The Constitution of Kenya apportions responsibility of planning to both National and County Governments. Under the Fourth Schedule on distribution of functions, Part 1 (21) and (32) mandates the National Government with the responsibility of formulating general principles of land planning, co-ordination of planning by the Counties, capacity building and technical assistance to the Counties. On the other hand, Part 2(8) allocates the function of County planning and development to County Governments. It is under these provisions that the County specific guidelines have been prepared.

The Department of Physical Planning prepared the National Spatial Plan (NSP) in response to the Kenya Vision 2030 to guide the spatial development of the country over a period of 30 years beginning in 2015.

It aims at achieving an organized, integrated, sustainable and balanced development of the country by providing a framework for better national organization and linkages between different activities within the national space.

To implement the Plan, the Counties are expected to play a key role by mainstreaming strategies, policies, and measures identified in the NSP into the County spatial planning systems.

The guidelines have identified planning policies, strategies, and measures that Plans at the County level are expected to mainstream and propagate. The policies address among others, the protection of rich agricultural land, development imbalances, conservation of environmentally sensitive areas, urban containment, and promotion of industrial development.

The guidelines provide direction on the existing potentials, the opportunities, the constraints/challenges inhibiting harnessing of the potentials, the strategies to apply, respective policies required, and the necessary measures to achieve optimal productivity, sustainability, efficiency and equity in the use of county land resources.

The guidelines are an opportunity on how best to refocus, vary and complement areas that require different approaches responding to country-specific needs and promote the livelihoods of their people, while contributing to the national aspirations of vision 2030, regional objectives of the Africa Agenda 2063, and international targets of sustainable

development. The refocusing will also be handy in reviewing and making decisions on NSP which is due for review in 2025.

These guidelines are therefore a tool for enhancing this critical path and provide a direction for development planning by the Counties as they discharge their responsibility of preparing county and local physical and land use development plans. The guidelines will also ensure that the County Integrated Development Plans conform to the proposed County specific policy guidelines and measures.

DRAFT

Preface

The National Spatial Plan (NSP) recognizes that Kenya is greatly endowed with massive and diverse resources distributed over the national space that require an integrated and coordinated approach for optimal productivity and sustainability.

The County Specific Guidelines have been derived from the National Spatial Plan and provide a planning framework for the integration of the NSP into the county spatial planning system. They are clear statements linking the National Spatial Plan to Inter-County, County and lower-level Physical and Land Use Development Plans and provide clarification on the anticipated sustainable development outcomes of implementing the Plan.

The County Government will adopt, develop and implement their plans based on the policies, strategies, and measures articulated in the guidelines. The realized county plans are expected to guide, harmonize and facilitate development within the county, hence contributing to the overall implementation of the NSP.

The guidelines also form an efficient compass and monitoring tool for National and County Governments to jointly pursue sustainable planning and appropriate implementation mechanisms.

For the county to be nationally competitive, there is need to balance development and promote optimal utilization of land and land-based resources as well as cultivate an integrated approach in addressing the intertwined challenges of regional imbalances/inequalities, rural development, underutilization of the available resources, uncontrolled urbanization, environmental degradation and inefficient transportation. It is imperative therefore, to prioritize the implementation of this strategic document so as to promote balanced development and competitiveness across the county

Executive summary

The County Specific Guidelines seek to facilitate the implementation of the National Spatial Plan by outlining policies, strategies and measures to guide County spatial planning and development and promote optimal productivity, sustainability, efficiency and equity in the use of land. They provide a framework for preparation of lower-level Plans including Inter-County, County and Local Physical and Land Use Development Plans.

The disconnect between National and County Spatial Planning and development has resulted in uncoordinated and unbalanced development, therefore creating a need for a clear structure that links National, Regional and Local planning and development. This is achievable through integration of the policies, strategies and measures proposed by the guidelines into County Spatial Plans, Programs and Projects, to tackle challenges of unbalanced regional development, urbanization, national competitiveness and unsustainable use of land and natural resources.

The County Specific Guidelines are organized into five chapters detailing various facets. Chapter one provides an overview, purpose and justification of preparation of the guidelines. It also outlines the objectives that the guidelines intend to achieve and details the preparation process as well as intended users. This chapter highlights the key principles that form the basis for preparation of lower-level plans including public participation, liveability, sustainable development, urban containment, smart urban growth among others.

Chapter two details the legal and policy provisions that the guidelines are anchored upon. They include, among others, The Constitution of Kenya, 2010, The Physical and Land Use Planning Act No.13 of 2019, County Government Act, 2012, Environmental Management and Coordination (Amendment) Act, 2015, Sessional Paper No. 01 of 2017 on National Land Use Policy and Sessional Paper No. 10 of 2012 on Kenya Vision 2030.

The third chapter analyses the county profile, detailing its location, size, bio-physical characteristics, socioeconomic status and the County's comparative advantage in relation to others. The locational context provides information on the geographical position and bordering Counties while the biophysical context discusses the topography, hydrology and climate. The socioeconomic status indicates key economic drivers of the County and its population and demographic structure.

Chapter four presents the County specific issues and proposes development strategies to promote national competitiveness, optimal use of land and resources, rural development, balanced intra-county development and urbanization. Additionally, it provides policy guidelines and measures for County advancement.

The final chapter five focuses on implementation and adoption of the guidelines. The implementation framework identifies institutions, County development programs and projects, and further ties them with responsible actors, resources and timeframes for effective execution. It proposes a framework for ensuring that the outlined policies, strategies and measures are adequately implemented.

DRAFT

Table of Contents

Contents

FOREWORD	2
PREFACE	4
PREFACE	ERROR! BOOKMARK NOT DEFINED.
TABLE OF CONTENTS	7
LIST OF TABLES	9
LIST OF MAPS.....	9
LIST OF FIGURES.....	9
CHAPTER ONE.....	10
1.0 INTRODUCTION	ERROR! BOOKMARK NOT DEFINED.
1.1 BACKGROUND.....	10
1.2 PURPOSE OF THE GUIDELINES	10
1.3 OBJECTIVES OF THE GUIDELINES	11
1.4 SCOPE.....	11
1.5 JUSTIFICATION.....	12
1.6 APPLICATION OF THE GUIDELINES	12
1.7 PROCESS OF PREPARING THE GUIDELINES.....	13
1.8 TARGETED USERS	14
1.9 KEY PRINCIPLES	17
CHAPTER TWO.....	18
2.0 LEGAL, POLICY AND PLANNING FRAMEWORK	ERROR! BOOKMARK NOT DEFINED.
2.1 CONSTITUTIONAL CONTEXT	18
2.2 POLICY CONTEXT	18
2.2.1 SESSION PAPER NO 12 OF 2012 ON THE KENYA VISION 2030	18
2.2.2 SESSIONAL PAPER NO. 1 OF 2017 ON NATIONAL LAND USE POLICY	18
2.3 LEGAL CONTEXT	19
2.3.1 THE PHYSICAL AND LAND USE PLANNING ACT, 2019 (PLUPA 2019)	19
2.3.2 COUNTY GOVERNMENTS ACT, 2012.....	19
2.3.3 THE URBAN AREAS AND CITIES (AMENDMENT) ACT, 2019	19
2.3.4 ENVIRONMENTAL MANAGEMENT AND COORDINATION (AMENDMENT) ACT, 2015	19
2.3.5 NATIONAL LAND COMMISSION ACT, 2012.....	19
2.4 PLANNING CONTEXT	20
2.4.1 NATIONAL SPATIAL PLAN (NSP)	20
2.5 NSP LINKAGE TO OTHER PLANS.....	20
CHAPTER THREE.....	23
3.0 COUNTY PROFILE	23
3.1 OVERVIEW	23
3.2 INTRODUCTION	23
3.2.1 LOCATION AND SIZE	23
3.2.2 BIO - PHYSICAL FEATURES	25
3.2.2.1 TOPOGRAPHY AND RELIEF	25
3.2.2.2 ECOLOGICAL CONDITIONS	25
3.2.2.3 CLIMATE	25
3.2.2.4 FORESTRY	26
3.2.2.5 MINERALS.....	26
3.2.2.6 TOURISM	26
3.3 SOCIO-ECONOMIC CHARACTERISTICS	27
3.6 THE COUNTY'S COMPARATIVE ADVANTAGE.....	34
3.7 COUNTY SPECIFIC ISSUES AND DEVELOPMENT STRATEGIES	35
CHAPTER FOUR.....	45
4 SPATIAL PLAN POLICY GUIDELINES	45
CHAPTER FIVE: IMPLEMENTATION AND ADOPTION OF THE GUIDELINES	54
5.1 OVERVIEW	54
5.2 IMPLEMENTATION APPROACHES	54
5.3 IMPLEMENTATION FRAMEWORK	55
5.3.1 COUNTY PHYSICAL PLANNING COMMITTEE.....	55
5.3.2 COUNTY PLANNING UNIT (CPU)	56

5.3.3 NATIONAL LAND COMMISSION 56
5.4 MONITORING AND EVALUATION 56
5.5 CONCLUSION 58

DRAFT

List of Tables

Table 1: Target users of the guidelines.....	14
Table 2: Population characteristics	28
Table 3: County Comparative Advantages.....	34
Table 4: county specific issues and development strategies.....	35
Table 5: Policy Guidelines for the County	45

List of Maps

Map 1: Location of Baringo County	24
Map 2: Existing situation of Baringo County	33
Map 3: NSP Proposal for Baringo County	53

List of Figures

Figure 1: Scope of the guideline.....	12
Figure 2: Policy focus on NSP	20
Figure 3: NSP linkages to other plans	22
Figure 4: NSP Implementation Structure.....	57

CHAPTER ONE: INTRODUCTION

1.1 Background

The County Guidelines set out policies, strategies and measures that will guide the long-term spatial development of the county for a period of 30 years. They cover the entire county and defines the general trend and direction of its spatial development.

The guidelines have been developed in line with the four thematic areas as outlined in the NSP. They provide a guide to the Planning Authority at the county on how to incorporate the NSP policies, strategies and measures during the preparation of County Spatial Plans and other lower-level plans like the Local Physical and Land Use Development Plans consequently implementing the NSP.

The NSP County Specific implementation guidelines summarize the County's existing potentials and opportunities, the constraints (challenges) inhibiting harnessing of the potentials, the applicable strategies and respective policies required, and the necessary measures to achieve optimal productivity, sustainability, efficiency and equity in the use of the county land resources. They guidelines act as a reference point.

1.2 Purpose

The purpose of the County Specific Guidelines is to provide a planning framework for mainstreaming of the National Spatial Plan to the County spatial planning system.

The guidelines are intended to assist the County enhance the implementation of the NSP by linking the proposed county specific policies, strategies and measures into the County plans, programs and projects while putting measures in place for achieving them. The guidelines inform preparation of various County Physical Plans such as the County Physical and Land Use Development Plans.

For optimal implementation of these plans, a County Integrated Development Plan (CIDP) is essential since it is a sectoral and budgetary based plan that draws its implementation programs and projects from the County Physical Plans.

1.3 Objectives

The guidelines provide policies, strategies and measures to deal with challenges of regional imbalances/inequalities, rural development, underutilization of the available resources, urbanization, environmental degradation and inefficient transportation.

Specifically, the objectives are;

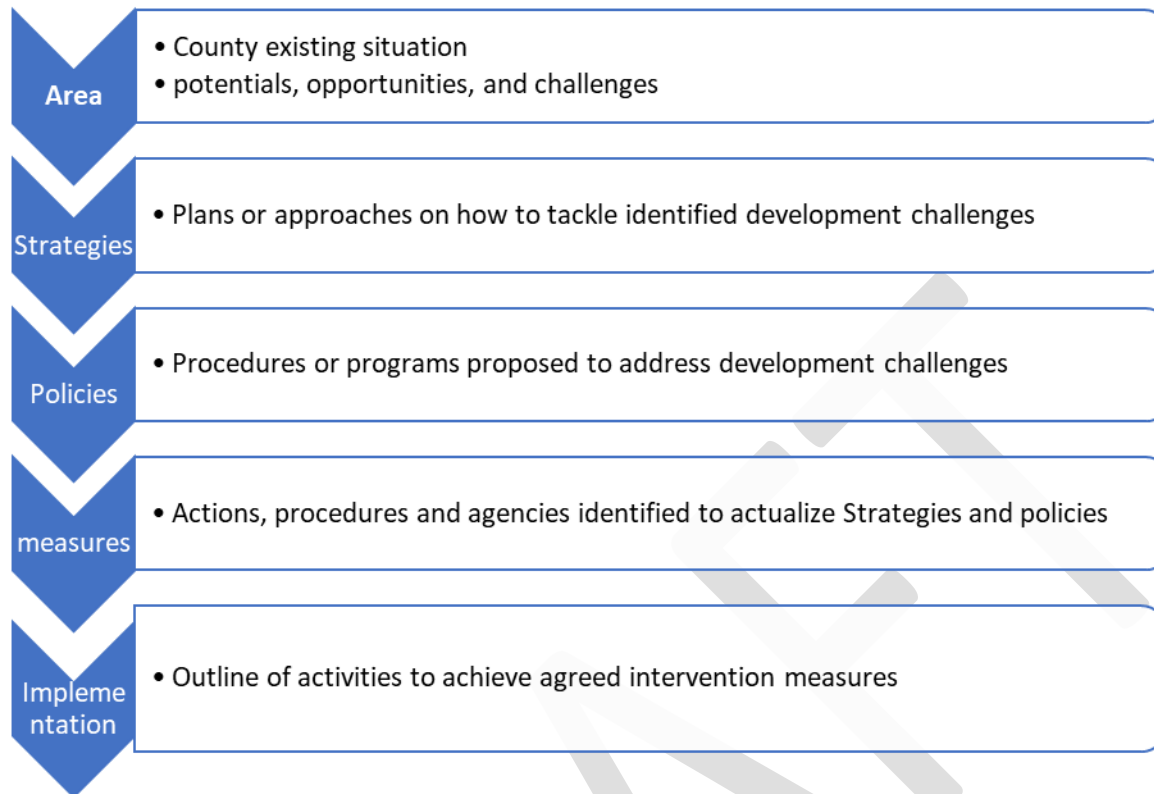
1. To sensitize the County on the provisions of the NSP
2. To promote synergy between National and County planning
3. To guide the County, implement the NSP
4. To identify the roles of the different actors in the implementation of the NSP.

1.4 Scope

The guidelines and strategies are specific to Baringo County and cover the entire territory of the county measuring approximately 11,015km². The guidelines highlight the County's existing potentials and opportunities, the constraints (challenges) inhibiting harnessing of the potentials, the applicable strategies and respective policies required, and the necessary measures, actions, approaches, plans and procedures prescribed to achieve optimal productivity, sustainability, efficiency and equity in the use of the county's land resources and an outline of activities to execute agreed interventions as captured in the National Spatial Plan, as indicated in Figure 1 below. These guidelines are effective up to the year 2045.

The guidelines further describe the scope as the areas being addressed as;

FIGURE 1:SCOPE OF THE GUIDELINE



Source: State Department for Physical Planning, 2022

1.5 Justification

Since the approval and launch of the NSP, its implementation has been undertaken in an uncoordinated manner hence the guidelines will provide a standardized approach for all Counties. The guidelines are also an important tool for tracking and evaluating implementation of the NSP both at National and County levels.

The preparation of County Spatial Plans and other lower-level plans which is a mandate of Counties has been slow and, in some Counties, has not begun at all. These guidelines are therefore a quick reference in preparation of county plans and for some Counties to help optimize land in the absence of these plans.

1.6 Application of the guidelines

The guidelines will be used or applied in the following ways to achieve a more sustained and coordinated development of the County;

- To effectively coordinate planning between the National and the County Government;

- To improve the County Government's capacity to formulate, coordinate and implement integrated development policies, strategies, measures, programs and projects to address spatially unbalanced development;
- To inform strategic infrastructure policy and public investment decisions which support the achievement of balanced development in the County;
- To strengthen County inter-sectoral coordination within a spatial framework and provide the private sector with a clear context in which they can make investment decisions;
- To optimize the use of land and natural resources by providing a framework for making sustainable locational choices for sustainable development and conservation of land productivity in the County.

1.7 Process of Preparing the Guidelines

The process involved reviewing the National Spatial Plan and identifying key issues, spatial policies, development strategies and measures specific to Baringo County. These key issues, spatial policies, development strategies and measures will be realized through preparation of County and other lower-level plans.

Research was undertaken on various thematic areas to enrich the County specific issues and development strategies as well as policy guidelines and measures/ interventions. Further, preparation of the guidelines considered the constitutional, policy and legal provisions on physical and land use planning. Expert opinion was sought on the identified issues, policies, measures and strategies for implementation viability.

The preparation of the guidelines was identified as one of the implementation tools of the NSP, in which key NSP issues, policies, strategies and measures were translated into specific action plans, programs and projects at the County level.

1.8 Targeted users of the guidelines

These Guidelines have diverse consumers and application depending on prevailing circumstances and actors as demonstrated in Table 1 below:

Table 1: Target users of the guidelines

User	Application
County Executive Committee Member in charge of Physical and Land Use Planning	<ul style="list-style-type: none"> • Preparation of county and lower-level plans • Linkage of planning structures • Quality control of the various county plans • Formulate county planning policies and strategies • Establish county specific planning institutions • Coordinate and implement county plans and policies
The County Director of Physical and Land Use planning	<ul style="list-style-type: none"> • Advising the county government on the impact of the county specific guidelines to the county • Preparation of County physical and land use development plans and other lower-level plans • Formulating County physical and land use planning policies, guidelines, strategies, and standards; • Issuance of development permission and other development control instruments under The Physical and Land Use Planning Act, 2013.
Licensed physical and land use planners both in public and private	<ul style="list-style-type: none"> • Prepare, coordinate and implement spatial plans • Quality control of plans and consultancy services

sectors	<ul style="list-style-type: none"> • Formulate policies, strategies and development guidelines • Dispute resolution
County assembly	<ul style="list-style-type: none"> • Approval of strategic sectoral budgets such as planning • Vetting of various County specific plans • Formulation and passing of County planning legislation • Enhance capacity to oversee the executive on spatial planning
Ministries, Departments and Agencies	<ul style="list-style-type: none"> • Mainstreaming relevant NSP policies, programs and projects • Allocation of resources to priority areas, • Strengthening linkages with spatial planning in resource management
The National Land Commission (NLC)	<ul style="list-style-type: none"> • Oversight role in land use planning to ensure efficient implementation of the NSP • Ensure relevant planning authorities carry out their functions as required by the law
Practitioners in the built environment	<ul style="list-style-type: none"> • Advance NSP relevant policies, programs and projects hence optimization of land resource • Appreciate sectoral Linkages to spatial planning • Facilitate incorporation of the policies, strategies and measures into, County specific plans
Community, developers and investors	<ul style="list-style-type: none"> • Comprehend the County priority sectors and County Plans and policies • Complement County spatial planning and implementation measures • Making informed investment decisions
Development partners	<ul style="list-style-type: none"> • Reference frame for selecting and funding spatial planning activities

	<ul style="list-style-type: none">• Understand planning linkages and implementation• Informed development decisions
Training institutions	<ul style="list-style-type: none">• Compliment the curriculum for training of spatial planners• Understand the planning procedures and processes

DRAFT

1.9 Key Principles

The principles, as applied in the NSP, should guide and form the basis upon which the lower-level physical and land use plans are prepared. Further the principles should ensure sustainable, coordinated, and realistic development. They include the following:

- 1. Effective Public participation/engagement:** All plans shall be prepared in a participatory and consultative manner with relevant stakeholders and sectoral actors.
- 2. Urban containment/Compact cities:** Local plans shall strive to limit and control urban growth within the set urban boundaries to protect rich agricultural land, mitigate urban sprawl and reduce cost of infrastructural provision.
- 3. Livability:** The planning of urban areas shall enhance the livability index in the area of housing, environment, transportation, health, and social engagement. The urban areas must be economically viable, socially inclusive and ecologically sustainable.
- 4. Smart and green urban growth:** Plans shall promote sustainable use of energy, creation of green spaces, reduce the need for car travel, and promote use of local materials, support businesses, protection of heritage and creation of unique character.
- 5. Sustainable development:** Balancing social, economic and environmental dimensions of development and catering for current and future generations.
- 6. Promotion of ecological integrity:** Plans shall promote the protection and conservation of environmentally sensitive areas.
- 7. Promote public transportation:** Favor public transportation over private transport to ensure efficiency and functionality of urban places.
- 8. Balanced development:** Plans to ensure there/ is balanced development in the County to cure inequalities.

CHAPTER TWO: THE POLICY, LEGAL AND PLANNING FRAMEWORK FOR THE GUIDELINES

2.1 Constitutional Context

The formulation of these guidelines took into account the Constitution of Kenya 2010 aspirations and Principles. Article 66 of the Constitution of Kenya 2010 gives the State powers to regulate use of any land and property in the interest of land use planning among others. The guidelines are therefore within and in response to the aspirations, values and principles as provided for in the constitution.

2.2 Policy Context

2.2.1 Session paper No 10 of 2012 on the Kenya Vision 2030

Kenya Vision 2030 is the overarching national development framework which all plans should be aligned to. The preparation of all spatial plans should take cognizance of the aspirations, foundations and development concepts of the vision. The preparation of the first National Spatial Plan is identified in Kenya Vision 2030 as a flagship project and is regarded as one of the foundations for socio-economic transformation. Hence the need for linkage between national planning and county planning which will be achieved through mainstreaming NSP requirements into CSPs and other lower-level plans by preparing NSP county specific guidelines to implement the NSP at lower levels.

2.2.2 Sessional Paper No. 1 of 2017 on National Land Use Policy

The policy was formulated to address the various challenges related to land use and ensure efficient, productive and sustainable use of land. The main goal of the policy is to provide legal, administrative, institutional and technological framework for optimal utilization and productivity of land related resources in a sustainable and desirable manner at national, County and community levels.

The policy recommends the preparation of a National Spatial Plan to provide an integrated framework for the development of the country including guidelines for sustainable rural and urban planning management. The policy also provides for the preparation of planning guidelines, policies and standards to be observed by County Governments and other sectoral agencies within the frameworks of approved physical and land use development plans. These guidelines have been prepared on this basis and they are to be observed by counties in the implementation of the National Spatial Plan.

2.3 Legal Context

Various Acts of Parliament are in place to provide the legal framework for the implementation of the mandate provided for in Article 66 of the Constitution. The Physical and Land Use Planning Act, 2019, The Urban Areas and Cities (Amendment) Act, 2019, County Governments Act No. 17 of 2012, The Land Act No. 6 of 2012, National Land Commission Act No. 5 of 2012 among others. The NSP County specific guidelines are prepared in this context and meet this criterion.

2.3.1 The Physical and Land Use Planning Act No. 13 of 2019

This is the overarching statute that provides for formulation of both National and County physical and land use planning policies, guidelines and standards. The Act further provides for administration, types, content, process and approval of the various types of Physical and Land Use Development Plans.

2.3.2 County Governments Act, 2012

This statute mandates County Governments to carry out the planning function at the county level. The guidelines support preparation of the various county level plans that meet the recommended quality and standards.

2.3.3 The Urban Areas and Cities (Amendment) Act, 2019

The statute provides for classification of urban areas and cities, their governance and management, and for integrated development planning. The guidelines are a basis for preparation of these lower-level plans.

2.3.4 Environmental Management and Coordination (amendment) Act, 2015

The Act provides for the establishment of an appropriate legal and institutional framework for the management of the environment as well as guidelines relating to environmental management and prevention or abatement of environmental degradation. The guidelines take cognizance of this Act and will be implemented within the framework

2.3.5 National Land Commission Act, 2012

The Act mandates the National Land Commission with the management and administration of public land on behalf of the National and County Governments and to monitor and oversight physical and lands use planning in the country. The guidelines fall within the ambit of this statute and will facilitate their oversight responsibilities.

2.4 Planning Context

2.4.1 National Spatial Plan (NSP)

The National Spatial Plan (NSP) covers the whole country encompassing the exclusive economic zone. The NSP outlines policies and strategies geared towards influencing desired future distribution and organization of human activity outlined in Vision 2030 and sectoral policies and plans. It aims at achieving economic efficiency and balanced development.

The various county spatial plans should be aligned to the policies outlined in the NSP as demonstrated in the figure below.

FIGURE 2: POLICY FOCUS ON NSP



Source: National Spatial Plan, 2015-2045

To actualize the NSP a comprehensive implementation strategy has been proposed that embraces a multiplicity of actors including National Government ministries, departments and agencies (MDAs), County Governments and the National Land Commission (NLC). The strategy proposes the establishment of the following institutions as key in the implementation of the Plan; The National Physical Planning Council, the National Technical Committee and the County Physical Planning Committee.

2.5 NSP linkage to other plans

The linkage of the National Spatial Plan (NSP) to county and other lower-level plans is key to realization of its aspirations and the successful actualization of these plans. The NSP provides

a spatial framework to ground the Vision 2030 flagships projects and form a basis for coordination of County policies, strategies, measures and plans.

Inter County and County plans take into considerations the policies, measures and strategies of the NSP and implements them actualizing its aspirations.

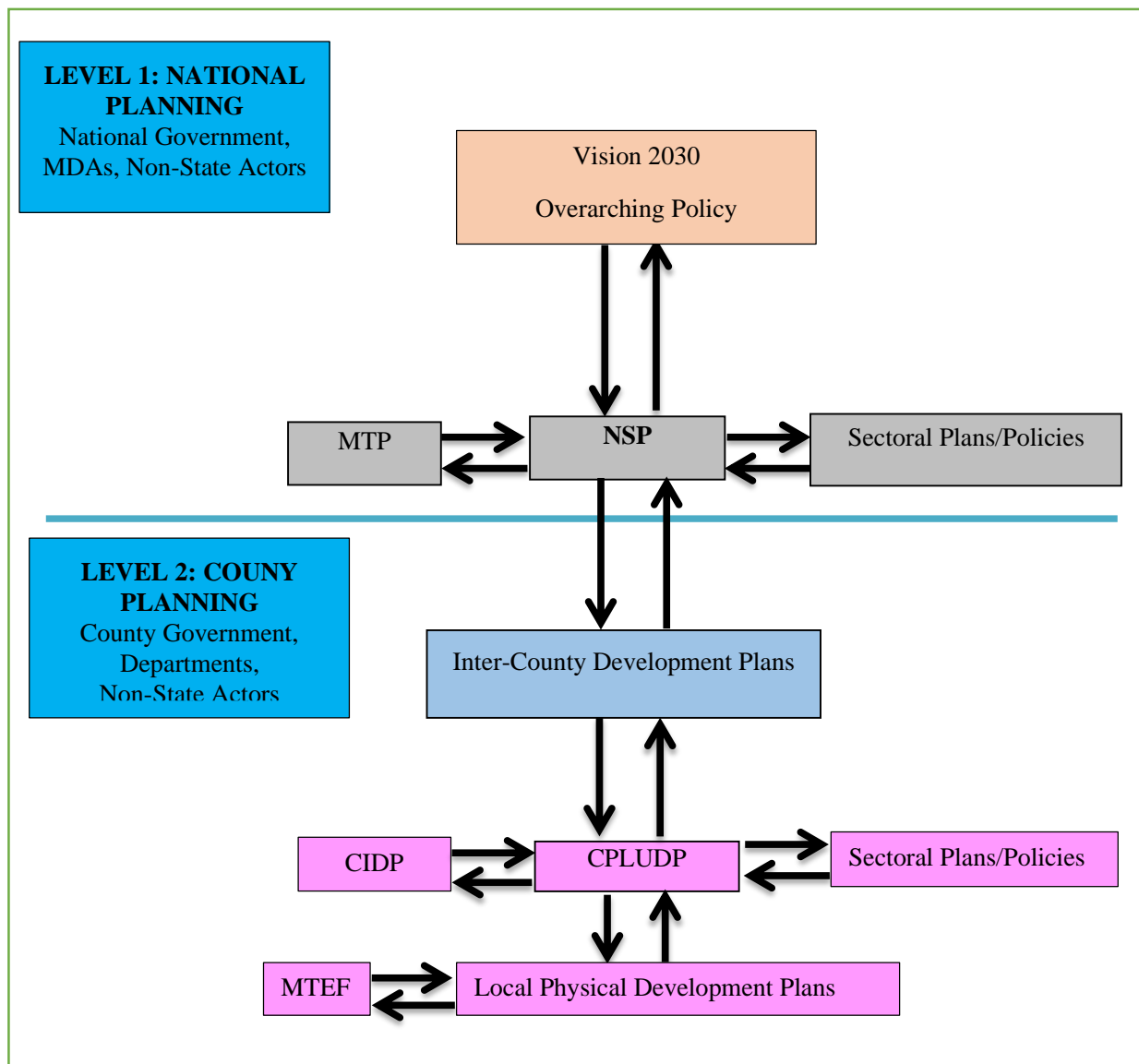
County Physical and Land Use Development Plans provide a framework where the CIDP draws its programs and projects. The implementation of the CIDP in turn leads to realization of the objectives of the County Physical and Land Use Development Plan.

The graphic below illustrates the country's planning Linkage.

DRAFT

Spatial Planning Linkages

FIGURE 3 NSP LINKAGES TO OTHER PLANS



Source: The National Spatial Plan, 2015-2045

CHAPTER THREE

3.0 County Profile

3.1 Overview

This chapter discusses a set of relevant information about Baringo County. It provides information on the location, size, bio-physical features, socioeconomic status and looks at the comparative advantage of Baringo County as compared to the other Counties in Kenya.

Baringo County is one of the 47 counties within the former Rift Valley province. Its capital is Kabarnet.

3.2 Introduction

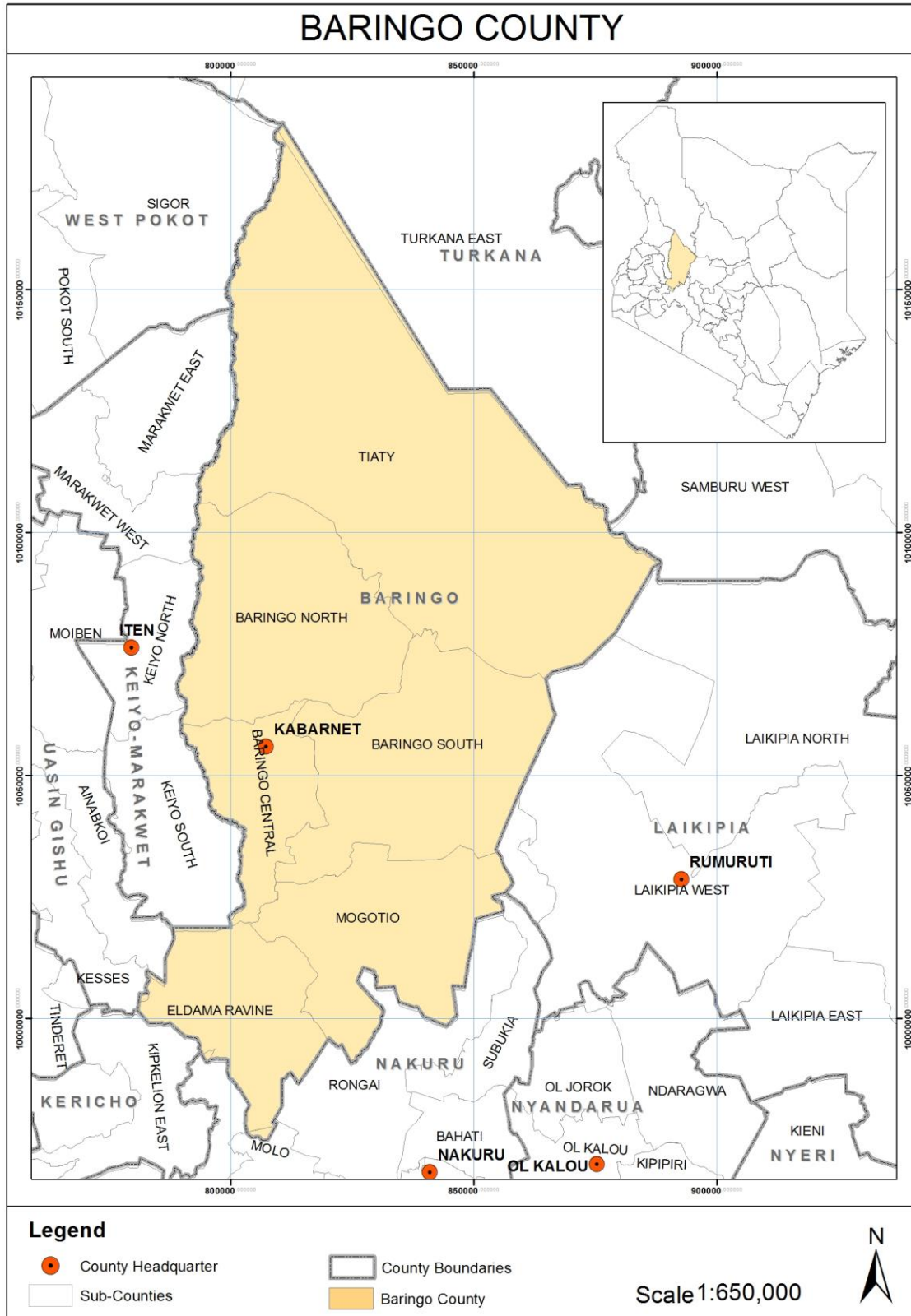
3.2.1 Location and Size

Baringo County is situated in the Rift Valley region. It borders Turkana and Samburu Counties to the north, Laikipia to the East, Nakuru and Kericho to the South, Uasin Gishu to the Southwest, and Elgeyo Marakwet and West Pokot to the west.

It is located between longitudes 35 30' and 36 30' East and between latitudes 0 10' South and 1 40'. The Equator cuts across the county at the southern part. It covers an area of 11,015.3 sq km of which 165 sq km is covered by surface water - Lake Baringo, Lake Bogoria and Lake Kamnarok.

Map below shows the location of Baringo County in Kenya.

MAP 1: LOCATION OF BARINGO COUNTY



Source: National Department of Physical Planning, 2022

3.2.2 Bio - Physical Features

3.2.2.1 Topography and Relief

Baringo County varies in altitude between 3000m above sea level at its highest points and nearly 700m above sea level at its low points. One of the prominent features is the Kerio Valley, which is situated on the western part of the County. In the eastern part of the county near Lake Baringo and Bogoria in the Lobo Plain covered mainly by the lathstring salt - impregnated silts and deposits.

The Tugen Hills form a conspicuous topographic feature in the county. The trend of the hills is north- south and mainly consisting of volcanic rocks. The hills have steep slopes with prominent gullies. On the eastern and western parts of the hills are escarpments. Rivers on the hills flow in very deep gorges.

The floor of the Rift Valley owes its origin to the tectonic and volcanic disturbances, which have dislocated surfaces, forming separate ridges. The troughs of the rift that have a north-south alignment are occupied by Lake Baringo and Bogoria which occupy 164 km². Lake Bogoria is particularly spectacular because it is one of the few hot water lakes in the world. Lake Kamnarok covers 1km².

3.2.2.2 Ecological Conditions

Exotic forests exist in the county but the known indigenous forests are found in Kabarnet, Kabartonjo, Tenges, Lembus, Saimo, Sacho and Ol' Arabel and Eldama Ravine. The main exotic species are; *Grevellea Rabusta*, *Cuppressus lusitanica* and *Eucalyptus saligna*. *Prosopis juliflora* exists in Marigat area. Kipng 'ochoch forest in Sacho, one of the 10 forest blocks under Tenges forest station, is an example of a well conserved indigenous forest where visitors and nature lovers could view the entire Lake Baringo basin, fluorspar mines, Laikipia ranges, Elgeyo escarpment, Kerio Valley and other touristic attractions that the county offers. The county is classified as arid and semi -arid. Most parts of East Pokot, Baringo Central, Baringo South, Baringo North, Mogotio sub -counties are arid and semi - arid except for Koibatek sub-county, which is in a highland zone.

3.2.2.3 Climate

The rainfall varies from 1,000mm to 1,500mm in the highlands to 600mm per annum in the lowlands. Due to their varied altitudes, the sub -counties receive different levels of rainfall. Koibatek Sub-County receives the highest amount of rainfall. The lowland Sub -Counties of Mogotio, East Pokot and Baringo North receive relatively low amounts. The temperatures

range from a minimum of 10°C to a maximum of 35°C in different parts of the County. The climate of Baringo varies from humid highlands to arid lowlands while some regions are between these extremes.

3.2.2.4 Forestry

Baringo County has 65,280.4 ha of forests, which are gazetted. The established plantations cover an area of 13,940ha, while the rest is natural forest. A number of residents depend on the forests to earn a living. They keep bees, harvest timber and burn charcoal.

The major water catchment areas are Lembus/Koibatek (northern Mau catchment) to the south, Tugen Hills, Mochongoi and Ng'elecha to the east, Amaya and Tiati Hills to the north east and north respectively. These are classified as follows; Lake Baringo catchment; Perkerra, Molo, Endao and Ol Arabel catchments, Lake Bogoria catchment; Waseges and Emsos catchments, Kerio North; Kipsaa, Turukwei, Mbara, Kaptich and Yeptos catchments and Lake Kamnarok; Pemwai. Tiati catchment; Amaya, Nginyang' and Kolowa is based on seasonal rivers.

3.2.2.5 Minerals

Opal is mined at Isanda near Perkerra, Fluorite deposits have been cited in the basement and volcanic rocks of Tiati Hills. Carbon dioxide deposits are found at Esageri, Mogotio Sub-County. Quarrying has gained prominence in the county, especially in Tenges division where building stones, sand and ballast are being exploited. There are also abandoned ruby mines at Sandai village near Lake Bogoria.

The county has a potential of ruby, diatomite, manganese and fluoride mining. Tullow Oil Company has set base at the county, Block 12A, to explore oil. Geothermal Development Company is drilling geothermal energy at Silale area in East Pokot Sub-County.

3.2.2.6 Tourism

Major attractions in Lake Bogoria are the bubbling waters, hot springs, gushing geysers, flamingos and ostriches. There are Kapedo hot springs in the area. Wildlife includes tortoises, large aquatic and terrestrial game. There exists tourist resort centres, among them Lake Bogoria Spa Resort and Papyrus Inn hotels. Endorois cultural dancers entertain tourists visiting the lake.

Lake Baringo has 13 islands and viewpoints that provide magnificent views of the lake. The largest island being Ol-kokwe. The other island is Samatian that is small but with breathtaking views across the bronze waters of Lake Baringo.

Forests in Tugen Hills, Laikipia escarpment and Eldama Ravine have beautiful sceneries that attract regular visitors. Examples are Ol'Arabel, Tenges, Kipngochoch, Kabarnet, Katimok and Saimo forests.

Other interesting tourist locations in the lake are Soi Safari Lodge, Lake Baringo Club as well as Reptile Park, which is one of the largest reptile parks in the Rift Valley. Another one is Ruko Wildlife Conservancy exists in the area and has scenic attractions ranging from wildlife to cultural villages. Korosoi volcano, which rises 1,449m above sea level, offers an ideal spot for watching birds such as bat hawks and majestic verreauxs eagle. Kabarnet National Museum and Kipsaraman Community Museum are located on top of Tugen Hills. The two museums form unique tourist sites with varied attractions and house traditional Kalenjin artifacts, which include musical instruments, storage equipment, furniture and ornamental decorations. At Eldama Ravine, there are the Kursalal falls, a stunning waterfall within Lembus forests.

Baringo County has Lake Bogoria National Game Reserve, which is 107 km². The acacia woodlands within the national game reserve is home to many wild animals; rare kudu, antelopes, zebras, leopards, cheetahs, hyenas, mongoose, monkeys, baboons and jackals. There are more than two million lesser flamingos and 350 bird species, especially along the shores of the Lake Bogoria. Apart from birds, visitors have the opportunity to view crocodiles, hippopotamus, the imposing Laikipia escarpment as well as the dramatic Tugen Hills.

Lake Baringo Snake Park has snake species such as the black mamba, puff adder, boomslang and spiting cobra. Other reptiles in the park are monitor lizards, crocodiles, tortoises and harmless stripes bellied sand snakes.

3.3 Socio-Economic Characteristics

Demography; According to the Population and Housing Census 2019 the population size of Baringo County was 666,750. The county's inter -censual growth rate is 2.6 per cent per annum.

The county's average population density is 50 persons per square kilometre (Population Census 2009).

Urban populations are settled in the two major urban centres in the county; Kabarnet and Eldama Ravine. Timboroa, Marigat, Maji Mazuri and Mogotio are additional towns that are fast growing.

The table below gives a brief description of the population characteristics and projected trends of the county;

TABLE 2: POPULATION CHARACTERISTICS

Year	2019	2020	2025	2030	2035	2040	2045
Population Size	666,750	684,085	701,872	797,985	907,261	1,031,500	1,172,753
Male	333,650	342,400	350,944	398,999	453,700	515,923	586,621
Female	333,100	341,685	350,928	398,986	453,561	515,577	586,132
Area	1,1015 Km ²						
Household Nos.	141861	145550	149334	169784	193034	219468	249521
Density	60	62	70	80	91	103	117

SOURCE: STATE DEPARTMENT FOR PHYSICAL PLANNING, 2022

Employment; The Kenya National and population census statistics of 2009 show that the total number of people who are in employment in Baringo County are 190,349 against a population of 555,561 people. Over 58.9 % of the labour force is engaged in small scale farming. Given that pastoralism is predominant in parts of the county, those under 15 years participate in employment as herds' boys. Out of the total labour force in the county, only 32 per cent are in employment and the rest (68 per cent) are unemployed. The major sources of employment are: Agriculture, rural self-employed, urban self -employed and wage employment.

Human Settlement; There are two urban centres in the county; Kabarnet and Eldama Ravine. Marigat, Maji Mazuri, Mogotio, Timboroa and Kabartonjo are upcoming urban centers. None of the urban centres in the county has a sewerage facility but all are supplied with electricity. Kabarnet, Eldama Ravine and Timboroa have a good supply of water while Mogotio , Maji Mazuri and Kabartonjo do not have a good supply of running water.

The main types of roofing in the county are corrugated iron sheets at 60 per cent followed by grass-thatched roofing estimated to be 40 per cent. Other types of roofing are: Tiles, concrete asbestos, *makuti* and mud among others.

Health; There are 184 health facilities: County hospitals (1), sub-county hospitals (4), dispensaries (156), health centres (19), medical clinics (2) and others (2). The doctor -to-population ratio is 1:57,381 (Baringo Central Sub-County) and 1:34,716 (Koibatek Sub - County). The infant mortality rates 63/1000. Malaria, respiratory tract diseases, skin diseases and pneumonia are the most prevalent diseases in the County.

Education; The county has 844 ECDs, 656 primary schools, 125 secondary schools. The challenges facing the sector include; harsh climatic conditions, especially in the lower parts of the county, insecurity that often results in the closure of some schools, poor infrastructure, prolonged drought, recurrent floods, high illiteracy rates and retrogressive cultural practices, low enrolments, low retention and transition rates and low completion rates.

The high school dropout and low transition are attributable to insecurity, food insecurity, retrogressive cultural practices, spatially inadequate education infrastructure and poor staffing levels. The county government has partnered with development agencies in peace building efforts and peace -dividend project/programmes, upscale and expansion of diverse school feeding programmes, including food-for-education initiatives, investment in low-cost boarding schools, establishment of income-generating activities (IGAs) in boarding schools to support the initiatives for child rescue from FGM and early marriage. The county has 12 polytechnics, one public teacher training college, six commercial colleges and one university campus.

Agriculture; The county can be divided into two major zones: the highlands and the lowlands. The higher elevations of the county are in the modified tropical zones with soils that are generally well drained and fertile. This zone contains the high potential areas for agricultural and improved livestock development.

In the Tugen Hills, coffee is grown in small scale while food crops like cereals, fruit trees and horticultural crops are also cultivated. In the southwest part, there is large -scale farming of cereals and horticultural crops, while Kerio Valley has potential for cotton production.

The lowlands are in a semi -arid to arid climatic zone. They have complex soils with various textures and drainage conditions which have developed from alluvial deposits. Some of these soils are saline. A large area is characterized by shallow stony sandy soils with rock outcrops, volcanic ash and lava boulders. This zone is essentially a rangeland and apart from scattered isolated pockets of dry land subsistence agriculture and small-scale irrigation in Marigat,

Kollowa and Barwessa, the major socio-economic activities centre on livestock and bee keeping.

Crops grown in the county are: Maize, finger millet, sorghum, beans, cowpeas, green grams, garden peas, Irish potatoes, sweet potatoes. Maize is the leading food and cash crop in Baringo County. Coffee has registered a decreasing trend in production due to high costs of production and erratic market prices.

The main livestock in the county include the East African Zebu Cattle in the lowlands and exotic cattle in the highlands of Baringo Central and Koibatek Sub -Counties. Other activities include bee keeping and honey production, hides and skins. Other emerging livestock , including ostriches, guinea fowls, doves, crocodiles, camels, snakes and termite.

Fishing; There are over 400 fishing households in Lake Baringo and 700 fish farmers with fishponds in the county. Dams in the County are stocked with 910,000 fingerlings mainly of the Tilapia and Clarias species. The main fish species are *protopterosus* (lung fish), tilapia and clarias. Fish farmers obtain their fingerlings from Omega farm, Kokwo Island, Lake Baringo or Jewlet Farm, Kendu Bay, Homabay County. The fishing gear being used include; Fishing nets, hooks, traps, motorboats and canoes.

Community Organizations/Non-State Actors; There are various community organisations operating in the county and are mostly involved in relief operations, water activities, HIV and AIDS, civic education and disaster management. Other Community Based Organisations (CBOs) are engaged in health, childcare, civil education, environment conservation and community capacity building. Women groups are engaged in dairy, poultry farming, tree nursery, HIV and AIDS and revolving loans, among other activities. There are approximately 146 registered cooperative societies in the

Non -governmental organisations that are key partners in enhancing the socio-economic wellbeing of the county's residents in the county include; Action Aid, ACTED, World Vision Kenya, Kenya Red Cross Society, International Union for Conservation of Nature (IUCN), Koibatek Socio-Environmental Organisation (KOSEO,) Enderois Welfare Council, Worldwide Fund for Nature (WWF), SNV –Netherlands, NECOFA, BARECARE, Women Organization Fighting Against Aids (WOFAK), Habitat for Humanity, Friends of Ravine Women Empowerment Organisation (FOREWO) and Baringo Advocacy and Development Organisation (BADO), World Food Programme (WFP) and UNICEF/UNOPS.

Transport Infrastructure; The County has a total 2912.55km of road with Class D, E, G, R and U having 339.22km, 1810km, 20.85km, 185.11km, and 557.37k respectively. The roads are mainly earth and mixed type. These roads are usually impassable during the rainy season. There are four main airstrips in the county and no airport, ports or jetties. There exist various airfields some of which were never developed, not in use, proposed, disused and under construction. These include Kabarnet airfield, Kimalel, Marigat, Lake Baringo airstrips, Lobo Landing strip, Eldama Ravine FTC, Kiserian, Mukutani, Loruk, Tangulbei, Churo, Arus, Nginyang, Maron, Kpedo, Barpelo, Ngoron, Kinyach and tuktuk airstrips.

Information & Communication Technology; The entire County is sufficiently covered by mobile network; and landline services are fairly distributed. The Presence of fibre optic cable in the county has improved internet connectivity within the county which has been improved through cyber cafes as well as personal connections via modems and routers.

Energy Access; The County government, through the rural electrification programme in collaboration with the Kenya Power Company, has increased the electricity connectivity in the rural areas of the county. Electricity connections in the county stand at 10,400. All the urban centres in the County; Kabarnet and Eldama Ravine, Marigat, Maji Mazuri, Mogotio, Timboroa and Kabartonjo are supplied with electricity.

The County has a potential of geothermal energy production around Lake Bogoria and Silale in East Pokot. Tullow Oil Company has established a base in the county, Block 12A, to conduct oil exploration.

Other resources for research and development of alternative energy sources that need to be exploited in the County include *Prosopis julifera* for electricity generation, *Jatropha circus* for bio -diesel, locally available biomass for biogas besides options in geothermal, solar and wind energy.

Water Resources; The sources of water in the county include dams, lake, rivers, water pans, streams, wells, springs and boreholes. They may be piped water or point sources. Water from vendors, especially in urban centres and small market centres, constitute a small percentage. The average distance to the nearest water point is 5km.

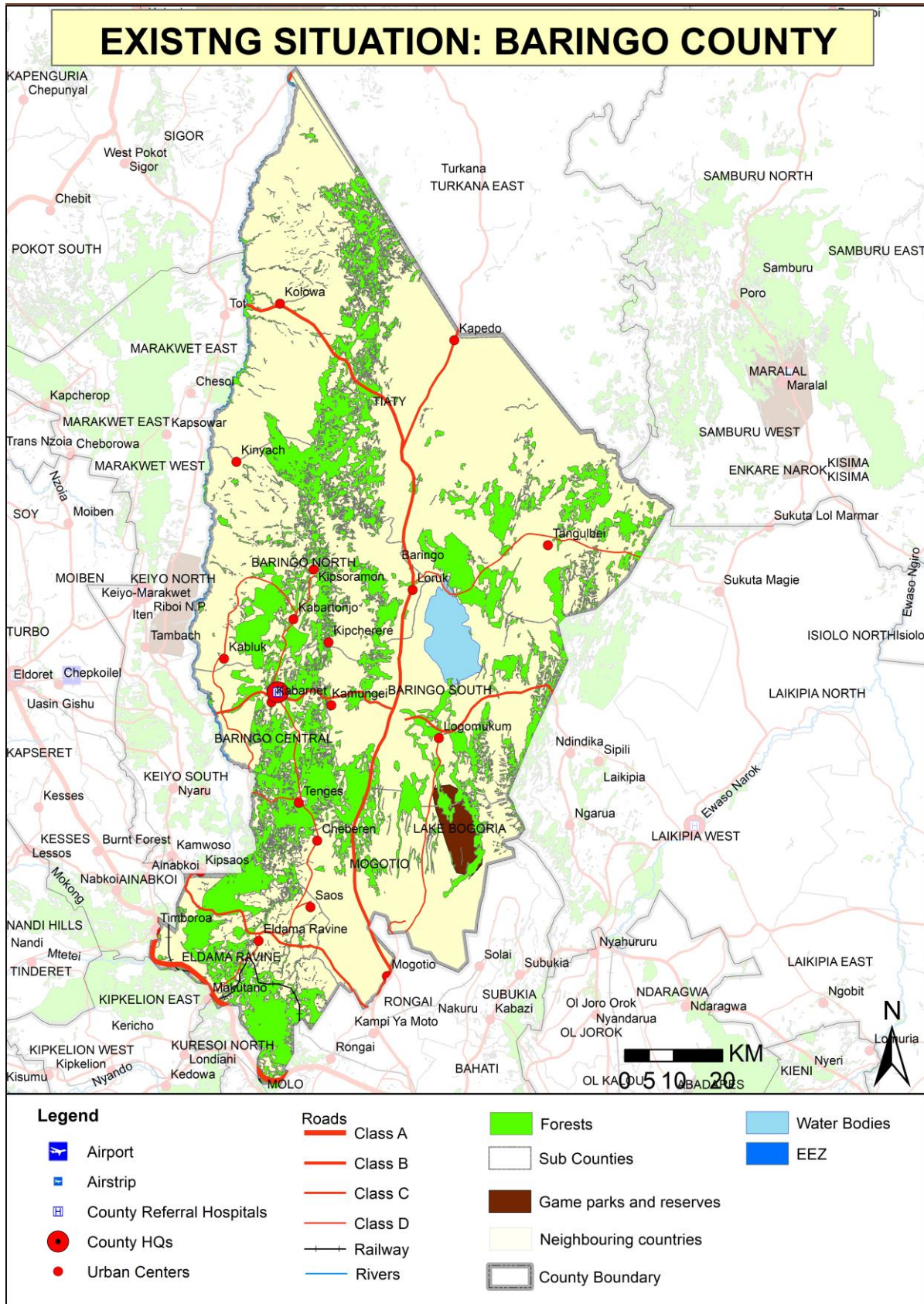
Urban centres in the County; Kabarnet and Eldama Ravine and Timboroa have a good supply of water while Mogotio, Maji Mazuri and Kabartonjo do not have a good supply of running water.

Water shortage is prevalent, especially in Lake Baringo and Lake Bogoria, parts of Kerio Valley, Mogotio, western slopes of Ng'elecha (Mochongoi) and the entire East Pokot (Kollowa to Tangulbei). This is caused by the low rainfall received and cyclic droughts. This has hindered development of livestock and farming activities, as people spend many hours daily looking for water. Major rivers like Kerio, Waseges, Emsos, Perkerra and Molo together with their tributaries could be tapped for domestic use and irrigation. Other rivers that may be of importance, though seasonal, are Amaya, Nginyang', Mukutani and Arabal.

Sanitation; None of the urban areas in the County; Kabarnet, Eldama Ravine, Marigat, Maji Mazuri, Mogotio, Timboroa and Kabartonjo has a sewerage facility. Most of the population does not have access to good sanitation. Households using bushes to relieve themselves constitute 49 per cent while 46 percent use pit latrines. Only five per cent of the population has access to proper sanitation. The figure/map below describes the existing situation in the county.

The table below describes the existing situation of Baringo County;

MAP 2: EXISTING SITUATION OF BARINGO COUNTY



Source: National Department of Physical Planning, 2022

3.6 The County's Comparative Advantage

The table below describes the key comparative advantages of the county.

TABLE 3: COUNTY COMPARATIVE ADVANTAGES

SECTOR	COUNTY'S COMPARATIVE ADVANTAGE
Natural Resources and Environment	<ul style="list-style-type: none"> • Variety in climatic conditions thus; • Mixed farming is mainly found in the highland areas whereas pastoralism is majorly practiced in arid regions. • The county is also majorly semi-arid with few pockets suitable for intensive agriculture. • Land has not been demarcated in most parts of the county and pastoralism is practiced. • The county has low incidence of landlessness since most of the land in the county is communal. • The County has a number of water catchment areas which include the Northern Mau Catchment, Lake Baringo Catchment, Lake Bogoria Catchment, Molo, Endau & OI Arabel Catchments, Waseges and Emsos catchments, Kipsaa, Turukwei, Mbara, Kaptich and Yeptos Catchments and Lake Kamnarok catchment. • Geothermal potential at Silale area in East Pokot Sub-County
Human Settlement	<ul style="list-style-type: none"> • The county has an even distribution of the working population within its major urban centres
Economy	<ul style="list-style-type: none"> • The county has a number of tourist attraction sites which include; Lake Baringo with 13 islands, Lake Bogoria, Tugen Hills, Kerio Valley, Lobo Plains, Tenges indigenous forest station, Laikipia ranges, Elgeyo escarpment, Kerio Valley, Kapedo hot springs, Laikipia escarpment, Eldama Ravine, Ruko Wildlife Conservancy, Korosoi volcano, National Museum and Kipsaraman Community Museum and Lake Bogoria National Game Reserve. • The County has a number of minerals including; fluorspar, diatomite, ruby, manganese, opal, and also potential in exploring carbon-dioxide deposits.
Physical infrastructure	<ul style="list-style-type: none"> • The county is served by various modes of transport that is road, air and water whose integration and potential presents opportunity to further boost other sectors in the county's economy • The county is served with an extensive road network
Social infrastructure	<ul style="list-style-type: none"> • The county is served with; County hospitals (1), sub-county hospitals (4), dispensaries (156), health centres (19), medical clinics (2) and others (2). • The county has 12 polytechnics

3.7 County Specific Issues and Development Strategies

The National Spatial Plan provides strategies for spatial growth and development across the country. The strategies are aimed at providing a spatial expression to Kenya Vision 2030 and other sector policies.

This section seeks to provide strategies for spatial growth and development of the county by addressing the factors that prevent the county from achieving the intended goals and objectives. The development strategies discussed are aimed at managing the global impacts, optimizing use of natural resources, creating a county balance and transforming rural areas. Specifically, the development strategies have been proposed to address the following aspects of the county's development agenda;

- Managing the national competitiveness
- Optimal use of land and other resources
- Balanced county development
- Rural development in the county
- Urbanization

The following are detailed NSP sector-specific issues and strategies that apply to Baringo County:

TABLE 4: COUNTY SPECIFIC ISSUES AND DEVELOPMENT STRATEGIES

Strategy 1: Enhancing Impacts of National Competitiveness		
Sector: Economy		
Opportunity	Constraints	Strategy
Trade liberalization and open global market for goods and services	<ul style="list-style-type: none"> • High cost of production occasioned by high cost of energy, inefficient transport system, outdated technology and bureaucracy 	<ul style="list-style-type: none"> • Harness the renewable and green energy sources to increase the energy capacity and reduce production costs in the County
Existing unique tourism potential in the County	<ul style="list-style-type: none"> • Insufficient specialization in the County's comparative advantages 	<ul style="list-style-type: none"> • Strengthen tourism activities in the County to leverage on comparative advantage
Already embraced ICT and innovation in the County	<ul style="list-style-type: none"> • Insufficient embrace and transition to knowledge, technology and innovation- 	<ul style="list-style-type: none"> • Promote blue economy through exploitation of the County's existing water resources • Defined specialization of the potential areas of the County

	based economies	<ul style="list-style-type: none"> Encourage the emergence of ICT locations, Research oriented institutions in the county
Strategy 2: Optimizing Use of Land and Natural Resources Sector: Agriculture		
Opportunity	Constraints	Strategy
<p>Well drained and fertile soils in the modified tropical zones in the county highlands.</p> <p>Agriculture potential areas in the county i.e Koibatek region</p> <p>Existing potential to better livestock farming and production</p> <p>Existing Lakes and Rivers</p>	<ul style="list-style-type: none"> Use of inappropriate farm inputs and technology Inadequate agricultural support infrastructure Lack of requisite equipment and technology to tap fishing potential Inadequate water supply infrastructure for irrigation/farming 	<ul style="list-style-type: none"> Transportation infrastructure in agricultural areas should be improved Agricultural support infrastructure should be provided to match the function Adopt modern methods and practices as well as technology in the agricultural areas of the Country Provide subsidies to promote the use of appropriate farm inputs and technology Promote the use of appropriate farm inputs and technology by providing subsidies and incentives
Sector: Natural Resources and Environment		
Existing Lakes and Rivers	<ul style="list-style-type: none"> Pollution of water bodies and unsustainable over-abstraction of water from the water bodies Human-wildlife conflicts Effects of climate change 	<ul style="list-style-type: none"> Establish the land carrying capacity Enforce existing regulations on water pollution and regulate the abstraction of water & environment Map, gazette and protect all important rivers and fishing areas
Strategy 3: Conservation and Protection Areas Sector: Natural Resources and Environment		
Opportunity	Constrain	Strategy
<p>Existing Gazetted forests</p> <p>Existing environmental policies and regulations</p>	<ul style="list-style-type: none"> Low enforcement of Environmental Act Encroachment of human settlements on environmentally sensitive areas Soil erosion Deforestation 	<ul style="list-style-type: none"> Parks and conservancies: controlled development of hotels is permitted; No change of use is permitted except for conservation purpose Intense forest cover through afforestation, reafforestation and agroforestry of the existing gazetted forests

<p>Presence of various institutions dealing with conservation issues in the County</p> <p>Existing forests, wet lands and other natural resource</p> <p>Existing policies and bodies dealing with environmental protection – NEMA and NGOs</p> <p>Conservation and Protection areas (forests, lakes, rivers etc.)</p>	<ul style="list-style-type: none"> • Loss of vegetation • Overstocking • Encroachment by human settlement and activities • Pollution 	<ul style="list-style-type: none"> • Strict regulation of exploitation of marine resources • Embrace modern farming methods • Enforcement of EMCA • Strict soil erosion control measures • Commercialization of livestock keeping • Provide requisite livestock support infrastructure • Development is not permitted in these areas except for the purpose of eco-tourism and research
Sector: Economy		
<p>The county has a number of major tourist attraction centres</p>	<ul style="list-style-type: none"> • Underutilized tourism potential 	<ul style="list-style-type: none"> • Promote domestic tourism by providing incentives and subsidies • Exploit tourism potential
Sector: Human settlement		
<p>Evenly distributed population</p>	<ul style="list-style-type: none"> • Deforestation • Flooding 	<ul style="list-style-type: none"> • Strict soil erosion control measures • Human settlement regulated • Flood mitigation measures put in place
Natural Resources		
Sector: Natural resource and Environment		
Opportunity	Constrain	Strategy
<p>Transition to green/renewable energy sources. i.e., Solar & H.E.P</p> <p>Existing potential mineral resources at Silale area in East Pokot Sub County</p>	<ul style="list-style-type: none"> • Underutilization of existing resources; Silale area in East Pokot Sub-County • Inadequate technology and exploration infrastructure • High costs of exploiting available natural resources 	<ul style="list-style-type: none"> • Optimal utilization of the available natural resource potential • Invest in appropriate technology and infrastructure • Undertake further exploration of the available natural resources • Funding and budgeting of the mineral's exploitation

Industry		
Sector: Economy		
Opportunity	Constrain	Strategy
Urban based industries Rural based industries Agro-based industries Mineral based industries Cottage industries and crafts	<ul style="list-style-type: none"> • Inadequate supply of land for industrialization • Low investments in industry • High energy costs • Inadequate transport infrastructure • Low adoption of technology for value addition • Price fluctuations • Lack of established Value chain • Insufficient market for finished products • Lack of frameworks to safeguard intellectual property rights (IPR) 	<ul style="list-style-type: none"> • Establish industrial parks in the County • Provide adequate infrastructure and utilities, skilled labor and favorable government policies • Promote the formation of cooperatives and Saccos to advance marketing • Provide adequate supportive transport and infrastructure in the rural centres • Diversify energy production sources to reduce costs of production and enhance its reliability • Provide appropriate technology to enhance value addition • Invest in exploration of additional potential mineral reserves • Sensitive players in the sector on the aspect of IPR and enforce regulations on the same • Promote assertive marketing campaigns for products both domestically and internationally
Tourism		
Sector: Economy		
Opportunity	Constrain	Strategy
The existing tourist attraction sites Numerous guest houses <ul style="list-style-type: none"> • Central Highlands and Great Rift Valley Circuit 	<ul style="list-style-type: none"> • Poor land and airstrips infrastructural facilities • Underutilization tourism potential in the area • Low number of visitors • Encroachment of human activities into the tourist attraction sites • Human-wildlife conflict 	<ul style="list-style-type: none"> • Diversify the tourism activities in the County • Open up the underutilized sites • Invest in roads and other infrastructure for the tourist attraction areas • Promote domestic tourism by providing incentives and subsidies • Strict enforcement of the existing regulations for safeguarding protection areas

	<ul style="list-style-type: none"> • Limited safety and security measures • Poor marketing to promote tourism • Weak integration of ICT in the development and management of the tourism value chain • Under developed tourism sites and products • Insecurity in the area 	<ul style="list-style-type: none"> • Promote domestic tourism by providing incentives and subsidies • Invest in ICT infrastructure and capitalize on online marketing • Increase in tourism market segment • Enhance security in tourism potential areas
Housing Sector: Human Settlement		
Opportunity	Constrain	Strategy
<p>Availability of land for housing development</p> <p>Public-private partnership in the housing sector</p> <p>Availability of local building materials and technology that are more affordable</p>	<ul style="list-style-type: none"> • Lack of enforcement of existing legislation on house development and land use • Housing demand outstrips supply • Little government involvement in housing provision which has left it in the hands of private developers • Inadequate linking transport infrastructure and utilities • Lack of enforcement of existing legislation on housing development 	<ul style="list-style-type: none"> • Enforce harmonize and regularly review the existing legislative and regulatory instruments • Bridge the gap between housing demand and supply by; government returning to provision of rental housing schemes, promotion of PPP, tax rebates and subsidies to lower construction material, promote use of locally available building materials and indigenous knowledge • Provide adequate and appropriate infrastructure • Encourage PPP in housing development
Transport Sector: Transport		
Opportunity	Constrain	Strategy
<p>Rapid urbanization</p> <p>Increased accessibility</p> <p>Increased trade and investments</p>	<ul style="list-style-type: none"> • Lack of coordination of activities by various agencies in charge of the transport sector • Inadequate NMT infrastructure • Congestion and on street trading in urban areas • Uncontrolled motorcycle outburst in both 	<ul style="list-style-type: none"> • Undertake a county transport survey to develop guidelines and a framework of principles for rural - urban transport policy • Preserve and secure adequate land for future transport and other related infrastructural development • Promote the purchase and use of high occupancy public

<p>Increased revenue allocation</p> <p>Exploitation of untapped resources</p> <p>Reduction of transport costs</p> <p>Opening up of undeveloped areas in the County</p> <p>The County has a number of Airstrips; Kabarnet airfield, Kimalel, Marigat, Lake Baringo airstrips, Lobo Landing strip, Eldama Ravine FTC, Kiserian, Mukutani, Loruk, Tangelbei, Churo, Arus, Nginyang, Maron, Kpedo, Barpel, Ngoron, Kinyach and tuktuk airstrips</p>	<p>rural and urban areas of the County</p> <ul style="list-style-type: none"> • Inadequate parking space especially in urban areas • Encroachment of settlements on road reserves • Inadequate or lack of terminal facilities hence picking and dropping of passengers in undesignated points • Poor quality of transport services • Inappropriate modal split • Unexploited regional role of the transport system • Transport system not fully integrated • Urban environmental pollution • Lack of a County transport policy • Inadequate human resource capacity • Poor condition of most airstrips 	<p>transport vehicles and discourage the use of private vehicles in the County's urban areas</p> <ul style="list-style-type: none"> • Create linkages to agricultural, tourist and urban areas of the County • Enforce a regulatory standard requirement for all public transport service operators • Encourage private sector participation • Proper traffic management system for urban areas • Consolidate and explore new funding sources for improvement of roads in the County • Connect the County and Sub County headquarters with proper transportation system • Formulate regulations and guidelines to control development along transportation corridor • Improve and expand existing airstrips and linkages between airstrips and Urban Centres • Enforce development control measures within and around airstrips
<p>Public Utilities Sector: Infrastructure (water & sanitation)</p>		
<p>Opportunity</p>	<p>Constrain</p>	<p>Strategy</p>
<p>Reliable rainfall</p> <p>Hilly terrain</p>	<ul style="list-style-type: none"> • Inadequate support infrastructure • Pollution of existing water bodies • Unreliable access to clean and sufficient water • Lack of sewerage network in major towns 	<ul style="list-style-type: none"> • Water sources and catchment areas; aquifers, dams and water recharge areas in the County should be protected and rehabilitated by creating buffers between these sources and other non – compatible land uses • Invest in water harvesting technology and storage facilities • Develop appropriate water reticulation network • Develop and upgrade appropriate sanitation infrastructure including collection, disposal and treatment systems to meet the demand for the growing population

		<ul style="list-style-type: none"> • Develop sewerage system in the major towns; Koibatek, Eldama Ravine and others
Sector: Infrastructure (solid waste management)		
Opportunity	Constrain	Strategy
<p>Existing policies on waste management activities in the County</p> <p>Private – Public partnership</p>	<ul style="list-style-type: none"> • Inadequate systems of solid waste management • High urbanization rate • Inadequate dumping sites • Poorly sited dumping sites 	<ul style="list-style-type: none"> • Development of more and stable systems/entities for solid waste management • Construction and upgrading of integrated solid waste facilities to enable proper collection, sorting, treatment and disposal of solid waste • Implement reduce, reuse and recycling guidelines
Sector: Infrastructure (energy)		
Opportunity	Constrain	Strategy
<p>Alternative energy sources</p> <p>Potential production of HEP at Silale area</p>	<ul style="list-style-type: none"> • Growing energy demand • Under exploitation of energy resources • Lack of proper assessment and research on exploitation of green energy • Lack of relevant policy that guide the tapping and use of energy resources • Poor development of power infrastructure • High cost of transmission of power to consumers 	<ul style="list-style-type: none"> • Encourage use of renewable energy (solar, biomass) cogeneration • Develop a policy to guide the exploitation and use of potential green energy sources by developing standards and promoting research and planning • Use of most appropriate energy consuming equipment to ensure efficient and productive use of energy • Advocate for expansion of electricity cover to other trading centers
Information and Communication		
Sector: Infrastructure (ICT)		
Opportunity	Constrain	Strategy
<p>Existing systems in the County</p> <p>High population</p>	<ul style="list-style-type: none"> • Limited access to internet in both rural and urban areas • Poor connection and unreliability 	<ul style="list-style-type: none"> • Mainstream ICT in all sectors of the County to increase efficiency and productivity and improve on existing platforms • Expand fiber optic network to all urban areas to increase coverage

Social Infrastructure		
Sector: Sports		
Opportunity	Constrain	Strategy
<p>Availability of land for development of sports facilities</p> <p>Immense untapped sporting talent in the county</p> <p>Existence of many regional and national tournaments that need to be hosted in good quality stadia</p> <p>Sports tourism</p> <p>Availability of preserved land for infrastructure development in various parts of the country</p> <p>Existing department handling sports matters at the county government level</p>	<ul style="list-style-type: none"> • Poorly maintained and underutilized stadia • Poor management of existent infrastructure • Skewed distribution of sporting facilities • Lack of proper repair and maintenance of the sporting facilities structures • Little modernization and upgrade of sporting infrastructure • Underutilization stemming from little promotion of sports as a potential income earner 	<ul style="list-style-type: none"> • Set aside budgetary allocation for revamping and upgrading sporting facilities in the County • Provide all necessary stadia facilities and their auxiliary utilities • Address imbalances in distribution of sporting infrastructure by establishing modern stadia in areas away from major urban areas • Establish and properly constitute Stadia Management Boards • Develop sound stadia repair, upgrade and maintenance policies • Encourage private entities to take part in the development and management of sporting infrastructure • Strengthen the already established talent academies to harness sporting talent throughout the county and increase utilization of the infrastructure
Sector: Education		
Opportunity	Constrain	Strategy
<p>Already existing educational institutions</p> <p>Government subsidies in the education system</p>	<ul style="list-style-type: none"> • High levels of poverty • Skewed distribution of institutions in favor of urban areas • Poor infrastructure in educational facilities in the County • Low literacy levels 	<ul style="list-style-type: none"> • Invest in expansion of existing facilities • Renovation of existing infrastructure in the facilities • Provide learning facilities and equipment • Post more teachers specifically to understaffed schools • Discourage traditional and cultural taboos discriminating against education of the girl-child

	<ul style="list-style-type: none"> • Unfavorable cultural practices, religious and traditional beliefs towards education attainment • Inadequate learning facilities (building, desks and textbooks) 	<ul style="list-style-type: none"> • Encourage girls to continue with education even after pregnancy and delivery • Encourage the active fusion of innovation and research into coursework taught by colleges and Universities • Establish youth polytechnics and encourage specialization in colleges based on County potentials
Sector: Health		
Opportunity	Constrain	Strategy
<p>Increasing integration between Counties, Kenya and East/ Central African Countries providing an opportunity for health tourism</p> <p>Advances in training of niche-specialized healthcare professionals in the county</p> <p>Continued technological advances in the field of medicine in the form of invention of more efficient equipment and therapies</p> <p>Interest by foreign and internal research agencies to conduct research in these facilities</p> <p>Preference of private healthcare by the general population</p> <p>Increase in numbers of student taking up community medical-</p>	<ul style="list-style-type: none"> • Increasing demand for healthcare with the increasing population • Inadequate trained healthcare personnel with inappropriate working conditions • Unaffordable services by the health seekers • Slow adoption to modern healthcare technologies • Frequent power and water outages stalling service provision 	<ul style="list-style-type: none"> • Increase the capacity & conditions of County and Sub County hospitals to offer high quality curative care to reduce the pressure on national hospitals • Strive towards reaching the WHO recommended professional to patient ratio by training employing and hiring more qualified staffs • Carry out frequent refresher courses for medical professionals to make them knowledgeable on new, globally accepted trends in healthcare provision • Subsidize the cost of specialized services to increase accessibility by low-income earners • Determine the annual budgetary allocation necessary for ample provision of medical supplies to each hospital, make the requisite apportionment and push to adoption of modern healthcare practices • Reduce medical supplies, energy and water supply costs to lower the private health sector expenditure • Increase number of qualified personnel working in the community medical institutions • Encourage partnerships between the community health institutions and the healthcare providers (hospitals, dispensaries, clinics etc.)

related courses		
Strategy 4: Promoting Balanced Rural & Regional Development Northern Region		
Opportunity	Constrain	Strategy
Mixed agriculture and commercial livestock production Urbanization Minerals & mining potential Tourism potential Large scale livestock production Fishing potential Renewable energy potential	<ul style="list-style-type: none"> • Inadequate infrastructural facilities and services • Under exploitation of resources • Weak linkages between regions • Slow adoption technology and innovation 	<ul style="list-style-type: none"> • Strengthen the established economic block in the region • Encourage equitable exploitation and sound management of mineral resources while ensuring local participation for improved economic development • Promote investment in sustainable tourism including eco-tourism • Promote industrialization, value addition, advanced technology adoption in the County as well as strengthening the regional linkages • Enhance climate change adaptation and desertification mitigations
Strategy 5: Urbanization		
Opportunity	Constrain	Strategy
Devolution at counties Supporting policies	<ul style="list-style-type: none"> • Governance issues; land tenure, insecurity, corruption, poor institutional structure and poor service delivery 	<ul style="list-style-type: none"> • Provide alternative areas for development of urban centers by provision of services and infrastructure closer to the rural areas thus urban containment and stimulating rural growth • Strengthen urban rural linkages through provision of integrated transportation and communication systems • Implementation of existing approved plans
Strategy 6: Human settlement		
Opportunity	Constrain	Strategy
Vast land for settlement and general human activities	<ul style="list-style-type: none"> • Urban sprawl to agricultural land 	<ul style="list-style-type: none"> • Implementation and enforcement of existing approved plans • Preparation of development plans to contain human settlements

CHAPTER FOUR

4.0 Spatial Plan Policy Guidelines

The National Spatial Plan has stipulated policies to provide a foundation upon which to anchor the strategies enumerated therein. The primary aim is to inculcate discipline in the use of land and natural resources of the country thus stemming duplication and wastage of the resources.

This section seeks to provide the spatial policy guidelines and measures aimed at promoting the achievements of the objectives of the National Spatial Plan using its guidelines. They aim at enhancing global competitiveness and economic efficiency, optimizing the use of land and natural resources, promoting the regional balanced development and conservation of the environment. These policies are supported by a wide range of measures which spell out the specific actions to be undertaken to actualize the policy intentions. The policies shall also be implemented by the county government’s agencies responsible for planning and development control as well as the authorities responsible for land administration.

The following are policies and measures specific to Baringo County.

TABLE 5: POLICY GUIDELINES FOR THE COUNTY

No.	Thematic Area	Policy Guidelines	Measures
1	Development of Spatial Growth Regions; Region 2 – Irrigated agriculture and livestock production	<ul style="list-style-type: none"> • Enhanced agricultural production and value addition • Investment in social and physical Infrastructure • Development of tourism infrastructure • Environmental protection and conservation • Intensive and sustainable urban land use 	<ul style="list-style-type: none"> • Infrastructure provision to support value addition initiatives • Development of small and medium urban Centers in County • Provision of adequate social, physical and tourism infrastructure • Provision of services to the under-served population • Environmental protection • Conservation of wildlife and forest resources
2	County Spatial Structure	<ul style="list-style-type: none"> • Adopt an established framework by the NSP in achieving the preparation of lower tier integrated & sustainable land use 	<ul style="list-style-type: none"> • All Regional, County and Local physical/spatial plans shall be guided by the objectives and policies of the NSP • Existing physical/spatial plans shall be reviewed to conform to the

		developments plans	<p>objectives and policies of NSP</p> <ul style="list-style-type: none"> • Planning authorities at the County levels shall be supported with adequate human, financial and technical resources to promote sustainable Physical/spatial planning and development
3	Enhancing National Competitiveness	<ul style="list-style-type: none"> • The selective concentration concept shall be adopted for the planning and location of urban based economic activities in all counties to leverage on national competitiveness 	<ul style="list-style-type: none"> • Concentrate urban based economic activities through the preparation of Spatial Development Plans to guide development in the major urban centers; Kabarnet, Eldama Ravine among others
		<ul style="list-style-type: none"> • The major urban areas shall be planned and provided with appropriate infrastructure to enhance efficiency and quality of life 	<ul style="list-style-type: none"> • Establish appropriate trunk infrastructure in the form of reliable energy, water, sanitation and ICT. • Advance Technological Readiness through the provision of technological centers linked to different levels all over the country e.g., Science parks, research laboratories etc. • Improve the road infrastructure by providing for modal split, linkages and interchanges.
		<ul style="list-style-type: none"> • Land and natural resources of the less developed areas shall be utilized optimally and sustainably to enhance national competitiveness 	<ul style="list-style-type: none"> • Identify and develop the tourism potential within the central circuit • Widen the economic base of the less developed regions and places through strengthening of agricultural downstream processing of agricultural products • Explore and exploit the mineral, energy and water potentials • Provide transportation networks and other infrastructure necessary to support exploitation of land and other natural resources • Support development of urban areas in the less developed areas to catalyze development
4	Modernizing Agriculture	<ul style="list-style-type: none"> • Agro climatic zones IV, V and VI shall be developed and used optimally for large scale commercial production of livestock to support downstream processing of livestock products and promote balanced regional 	<ul style="list-style-type: none"> • Spatial plans prepared by counties within the County shall guide and promote the development of livestock productions • Prioritize provision of requisite infrastructure (water pans, dams, cold storage facilities and laboratories) to support livestock activities in the County

		<p>development</p> <ul style="list-style-type: none"> The use of land in high agricultural potential areas shall be intensified to increase productivity 	<ul style="list-style-type: none"> Enhance the ASALs comparative advantage in tourism Increase livelihood diversification, productivity and competitiveness and create an investment environment based on local dynamics and internal potentials Establish infant industries in rural and rangeland areas for value addition and investments opportunities Enhance ASAL climate change adaptation and mitigate desertification in the County Value addition to agricultural and livestock products.
5	Diversifying tourism	<ul style="list-style-type: none"> The NSP shall promote diversification of tourism by offering diverse products in the different tourist circuits throughout the county Appropriate Tourism support infrastructure and facilities shall be provided Governance of the tourism sector shall be enhanced 	<ul style="list-style-type: none"> Prepare a county tourism development master plan which should focus on tourism sites zoning, product development and quality standard of tourism services. Carry out an inventory of tourism infrastructure and facilities in Sothern/Northern circuit. Formulate planning regulations and standards to guide tourist specific infrastructure and facilities. Adopt low carbon and green tourism infrastructure options. Identify, map and prepare subject plans to protect all wildlife areas & migratory corridors. Undertake research to identify more tourist attraction areas and sites, promote Agro tourism sites.
6	Managing Human Settlements	<ul style="list-style-type: none"> The expected increase in population in urban areas shall be anticipated and accommodated particularly for the main urban areas 	<ul style="list-style-type: none"> Increase in the housing stock by planning and redeveloping existing housing areas. Formulate enabling local policy frameworks to support employment and income generation. Develop urban centres as intermediate centres between the rural and the principal towns.
		<ul style="list-style-type: none"> Human settlements shall be developed in line with environmental and natural resources conservation to improve living 	<ul style="list-style-type: none"> Plan and provide an integrated waste management system. Prepare and implement zoning guidelines to ensure compatibility of land uses in human settlement areas.

		<p>conditions</p> <ul style="list-style-type: none"> • Promote social organization and environmental awareness through the participation of local communities • Strengthen the capacity of the local governing bodies to effectively deal with environmental challenges • Encourage non-motorized transport (NMT)
		<ul style="list-style-type: none"> • The NSP advocates for the provision of an efficient, reliable and effective transport system for human settlements • Improve the road conditions and expand the linkages to human settlements • Integrate NMT with existing transport infrastructure. • Incorporate the concept of green energy in transport systems planning and redevelopment. • Prepare a transportation strategy for each urban area, as part of the integrated urban development plan required under the Urban Areas and Cities Act 2011, in collaboration with the National Government.
		<ul style="list-style-type: none"> • The management and governance of human settlements particularly the urban areas shall be improved • Build institutional capacities of the urban areas management boards • Integrate technology in management of human settlements to strengthen urban data systems. • Provide adequate human resource and improve their capacity in management of human settlements in the sectors of housing, settlement, land, infrastructure, construction, energy and disaster management. • Conduct research into migration trends to inform effective planning and provision of human settlements. • Enable public private partnerships in the provision of housing.
		<ul style="list-style-type: none"> • Peri-urban development shall be managed and controlled to contain urban growth within its limits and protect rural land uses • Formulate policy for urban containment and densification. • Formulate and implement planning legislation on peri-urban planning and management.
7	Conserving the Natural Environment	<ul style="list-style-type: none"> • All environmentally sensitive areas shall be protected and utilized in a sustainable • Prepare and implement integrated management plans for Environmental sensitive areas. • Involve and empower communities in the management of

		manner	<p>environmentally sensitive areas and promote environmental education and awareness.</p> <ul style="list-style-type: none"> • Strengthen Environmental Governance and harmonize sectoral policies, legislation and regulations.
		<ul style="list-style-type: none"> • National and County Physical Planning departments shall mainstream climate change into their planning processes. 	<ul style="list-style-type: none"> • Build and strengthen research capacity on climate change and related environmental issues. • Promoting growing of drought tolerant traditional high value crops. • Develop and promote the use of green energy.
8	Integrating the National Transportation Network	<ul style="list-style-type: none"> • An integrated and functional transport system for the national and urban areas shall be developed. 	<p>Air transport</p> <ul style="list-style-type: none"> • Modernize and expand the airstrips in the County to support tourism, agricultural and livestock production. <p>Road Transport</p> <ul style="list-style-type: none"> • Provide access and linkage, between County headquarters; County headquarters and Sub County headquarters and for local access and link them to national transportation corridors • Expand all roads connecting county headquarters to at least 60m and developed to bitumen standard(tarmac) • Expand all roads connecting County headquarters to Sub - County headquarters to at least 30m and developed to bitumen standard. • Develop roads connecting infrastructure installations of national importance and resource areas to bitumen standard.
		<ul style="list-style-type: none"> • An efficient and affordable Mass Public Transport for all urban areas in the country shall be developed 	<ul style="list-style-type: none"> • Design and develop integrated transport networks that considers all different modes of transport. • Establish a comprehensive transport management information

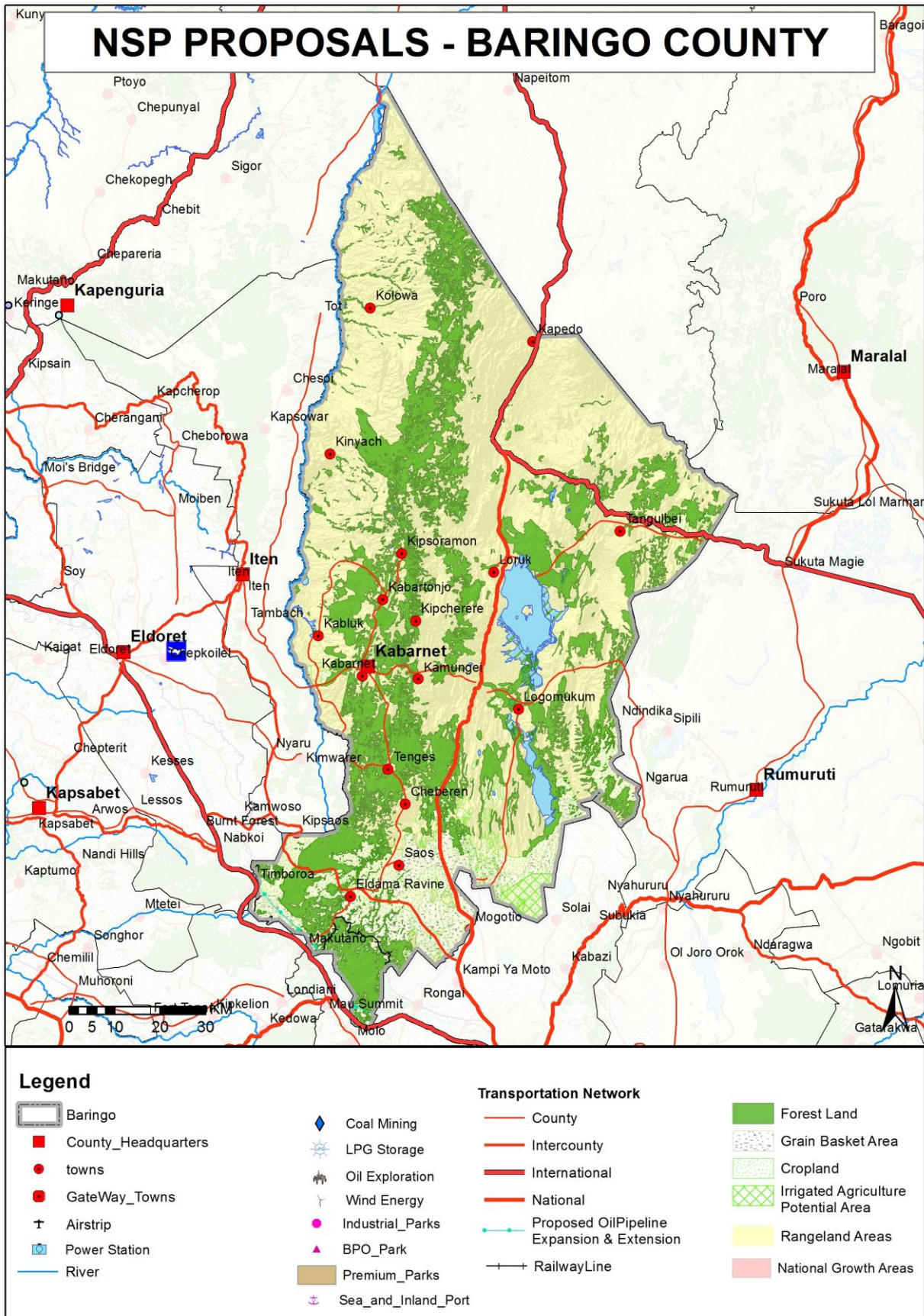
			system for all transport modes.
9	Providing Appropriate Infrastructure	<ul style="list-style-type: none"> • Safe, adequate, reliable and affordable electricity for both urban and rural settlements shall be provided 	<ul style="list-style-type: none"> • Provide safe connections for all informal settlements in urban areas for safety • Mainstream and enforce green energy options in the design of buildings • Increase access to electricity through upgrading and expansion of the national power transmission and distribution network • Support the flagship projects that are geared towards increasing electricity supply from both renewable and non-renewable sources
		<ul style="list-style-type: none"> • Expansion and improvement of water reticulation systems to facilitate the access to clean, safe, adequate, reliable and affordable water in human settlements shall be promoted 	<ul style="list-style-type: none"> • Incorporate water provision in all physical development plans • Development of national rainwater harvesting strategy and water storage investment plans for all the villages and urban centres; and revision of building by-laws to require all new development to have rain water harvesting • Restore all the water towers • Build water kiosks and yard taps, develop water supply pipeline systems and sewers, and a comprehensive mapping of all water supplies systems in the informal settlements
		<ul style="list-style-type: none"> • A globally competitive, accessible and affordable education, training and research facilities shall be promoted 	<ul style="list-style-type: none"> • All universities and other tertiary institutions to invest in research, technology and innovation • Expand access and equity, improve quality and relevance and invest in human resource by enhancing institutionalization of excellence and increasing the level of research funding • Restructure higher education institutions to offer courses based on regional endowment to promote competitiveness and regional balance • Mainstream ICT in higher education and training to provide online content to increase access • Develop and upgrade physical infrastructure in all higher education

			<p>institutions to increase their capacity</p> <ul style="list-style-type: none"> • Promote the delivery of university education and training system that is internationally competitive
		<ul style="list-style-type: none"> • A network of functional, efficient, safe, accessible and sustainable national health referral infrastructure shall be established 	<ul style="list-style-type: none"> • Increase the utilization of services at lower levels of the health services and reduce self-referral to the higher levels of care • Improve the system's ability to transfer clients and specimens between the different levels of the health care system • Improve reverse referral and feedback information systems • Improve preparedness and response to emergencies and disasters • Strengthen outreach systems for provision of health services to marginalized and vulnerable population
		<ul style="list-style-type: none"> • Appropriate, quality, efficient and cost-effective ICT infrastructure in both rural and urban areas shall be promoted 	<ul style="list-style-type: none"> • Integrate e-youth ICT platforms. The sub-sector will establish a youth portal to enhance information access by the youth • Develop and upgrade ICT Infrastructure in the county • Mainstream use of ICT in all levels of government and the private sector (e-government)
		<ul style="list-style-type: none"> • The expansion of sewerage systems and waste management facilities shall be promoted to improve sanitation in human settlements 	<ul style="list-style-type: none"> • Service all urban settlements by a centralized sewerage treatment system and solid waste disposal facilities • Apply appropriate technology solutions to sewerage treatment in rural and low-density housing areas • All spatial plans to make provision for development of sewer systems and treatment works and solid waste disposal sites • Enactment of laws at National and County levels to incorporate private public partnerships in infrastructure investments • Adopt appropriate technology to facilitate reduction, recycle and reuse of waste (3R's)

		<ul style="list-style-type: none"> • Sporting infrastructure shall be planned, developed, maintained and the existing rehabilitated to promote sports development 	<ul style="list-style-type: none"> • Rehabilitate the County stadia to international standards to enable the youth to actively develop and tap the immense talent in sports • Establish County Sports Talent Centers to act as feeds to the international center to scout, nurture and develop sports talents
10	Towards a Rapidly Industrializing Nation	<ul style="list-style-type: none"> • The cluster development strategy shall be promoted to focus on proximity to raw materials and markets of region-specific products 	<ul style="list-style-type: none"> • Concentrate urban-based industries • Mineral-based industries to be located in-situ where the minerals are found • Locate cottage industries and crafts in-situ • Concentrate livestock produce industries • Promote value addition in processing of local produce
		<ul style="list-style-type: none"> • Specific sites for industrial development shall be identified, planned and serviced with the appropriate infrastructure 	<ul style="list-style-type: none"> • Plan and set aside land for industrial development in the county • Develop SME and Industrial Parks in the county • Integrate the industrialization process and environment conservation • Provide an integrated, efficient, reliable and sustainable road & rail transport infrastructure for bulk haulages • Provide efficient airport facilities to facilitate quick delivery of produce and perishable products • Discharge of safe/ clean industrial waste into water bodies shall be encouraged
		<p>Adequate and affordable energy supply for the industrial sector shall be provided</p>	<ul style="list-style-type: none"> • Provide reliable energy infrastructure by extending the national grid network • Expand, modernize and upgrade electricity generation and supply • Adopt renewable energy generation programmes by provision of incentives and enforcement of building laws requiring utilization of renewable energy • Incentivize large industries to promote co-generation of power

The map below describes the county's development proposals as guided by the NSP.

MAP 3: NSP PROPOSAL FOR BARINGO COUNTY



SOURCE: DEPARTMENT OF PHYSICAL PLANNING 2022

CHAPTER FIVE: IMPLEMENTATION AND ADOPTION OF THE GUIDELINES

5.1 Overview

The implementation framework identifies activities and further ties them with responsible actors, resources and timeframes adequate for their execution. It constitutes a deliberately established method, means or system of ensuring that the policies, strategies and measures outlined in the guidelines are continuously and consistently executed to achieve their objectives.

To effectively implement the guidelines, the various sectors, actors and levels of planning have been identified and have to work together and the mandate of the sectors at the National and County levels of planning have to be integrated.

5.2 Implementation Approaches

The County Specific Guidelines will be implemented through various approaches including:

1. Preparation of spatial plans to integrate and conform to the proposals of the County Guidelines. The plans include:
 - Inter-County Physical and Land Use Development Plans for Metropolitan regions, conservation zones, river basins, water towers, coastal ecosystems, trans-boundary resource areas and transport corridors, among others.
 - County Physical and Land Use Development Plans.
 - Local Physical and Land Use Development plans for Cities, Urban areas, special area plans, subject plans and detailed neighbourhood plans, among others.
 - Sectoral plans
2. Integration of the guideline policies, strategies and measures into the County sector plans, programs and projects. Ministries, Departments and Agencies (MDAs), County and National Departments identified in the plan to administer the policies, strategies and measures are required to translate them into action plans, programmes and projects and to include them in their subsequent sector plans.
3. Formulation of policies, regulations and standards to guide development control

5.3 Implementation framework

The implementation of the various policies, strategies, measures, programmes and projects under these Guidelines will involve a wide range of actors. It will require a coordinated approach and partnership between the National and County Governments and non-state actors. It may require re-engineering of institutions and a number of actors to undertake the implementation through a harmonized approach.

The National Spatial Plan identified a multi-leveled framework for implementation of the plan that incorporates all levels of actors. In this regard, the institutions identified in the NSP to undertake implementation of the plan at County-level shall also be mandated to ensure implementation of this Guidelines.

The following are the Institutions mandated to ensure implementation of the County Specific guidelines;

5.3.1 County Physical Planning Committee

The role of the County Planning Committee shall be to ensure aspirations of the guidelines are articulated in preparation of the County Spatial Plans, County Integrated Development Plans and Local Physical and Land Use Development Plans.

The composition of this committee consists of;

- i. The Governor who will be the Chairperson,
- ii. the Deputy Governor,
- iii. the County Executive Committee Members from various sectors
- iv. Directors from various relevant County Departments including Lands and Physical Planning, Economic planning, Agriculture, Industrialization, Tourism, Environment, Transport and Infrastructure

The functions of the committee include;

- 1) To promote effective integration between physical, economic and sectoral planning within the framework of county development policies.
- 2) To provide policy guidance for the implementation of strategic spatial projects

- 3) To ensure that the guidelines policies and measures are mainstreamed in the various county plans.
- 4) To mobilize resource for implementation of the Guidelines.

5.3.2 County Planning Unit (CPU)

The technical Unit shall provide technical support to the various implementing County departments on issues relating to physical planning.

The CPU shall;

- i. Monitor the Implementation of the guidelines.
- ii. To disseminate components of the guidelines to the various county departments.
- iii. Update the County Physical Planning Committee on a regular basis on the implementation of the guidelines.

The County Director of Physical Planning shall be responsible for preparation of an annual state of planning report which shall among other things appraise the status of implementation of the guidelines.

5.3.3 National Land Commission

The National Land Commission shall play its oversight role in land use planning to ensure efficient implementation of the NSP and the guidelines. Other functions of the Commission in the implementation of the NSP and the guidelines include the following: - To formulate mechanisms and parameters for monitoring and overseeing land use planning.

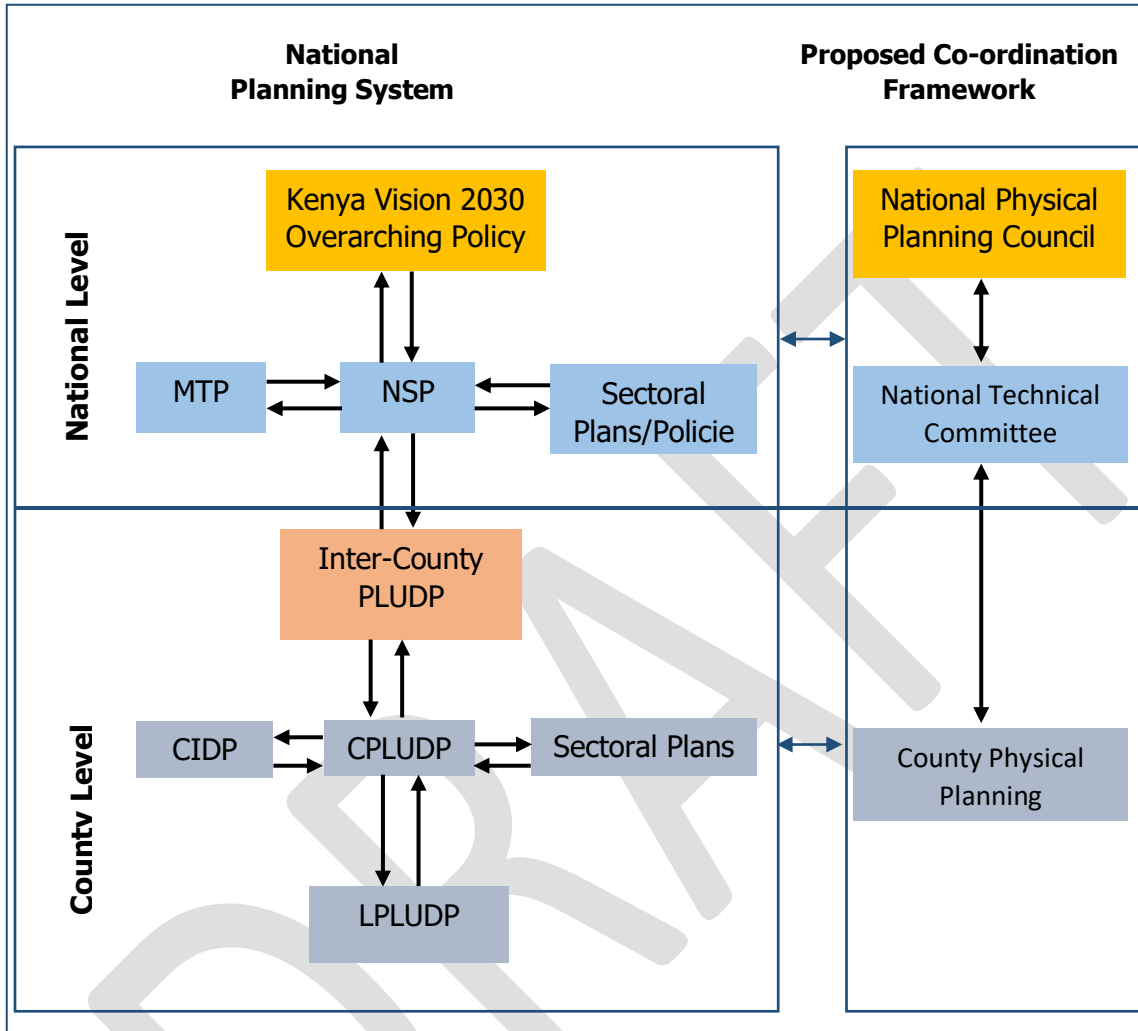
- i. To ensure that relevant planning authorities carry out their functions as required by law.
- ii. To make recommendations for improvements of the planning systems in the county.
- iii. To mobilize resources to support physical/land use planning.

5.4 Monitoring and Evaluation

Implementation of the guidelines will be monitored and evaluated to measure both outputs and outcomes and ensure that the intended actions are implemented in a timely manner. To facilitate attainment of the objectives of the guidelines, performance indicators will be developed by the County Physical Planning Department for efficient monitoring. Periodic reports will be prepared in relation to progress being made in their implementation.

The graphic below illustrates the implementation structure for County Specific guidelines.

FIGURE 4: NSP IMPLEMENTATION STRUCTURE



Source: Department of Physical Planning, 2022

5.5 Conclusion

The application of these guidelines will be undertaken by a number of actors and hence the need for a coordinated approach. The lead agency will be Baringo County Government which will be responsible for implementing various county specific initiatives proposed by the guidelines.

The National Government, County Government of Baringo, the private sector and the general public will be critical in actualizing the objectives of these guidelines. The County Physical Planning Committee shall develop a communication strategy to enhance the synergies.

The National Department of Physical Planning shall undertake sensitization, training and capacity building of the County Government and National Government institutions and agencies that will be involved in the implementation of these guidelines. Special attention will be given to the County physical planning units, as they will be expected to provide technical expertise in the implementation of the County specific policies and strategies.