



# NATIONAL SPATIAL PLAN IMPLEMENTATION GUIDELINES FOR ELGEYO MARAKWET COUNTY



MINISTRY OF LANDS AND PHYSICAL PLANNING

© 2022

## 1.1 Acknowledgments

## 1.2 Foreword

The Constitution of Kenya apportions responsibility of planning to both National and County Governments. Under the Fourth Schedule on distribution of functions, Part 1 (21) and (32) mandates the National Government with the responsibility of formulating general principles of land planning, co-ordination of planning by the Counties, capacity building and technical assistance to the Counties. On the other hand, Part 2(8) allocates the function of County planning and development to County Governments. It is under these provisions that the County specific guidelines have been prepared.

The Department of Physical Planning prepared the National Spatial Plan (NSP) in response to the Kenya Vision 2030 to guide the spatial development of the country over a period of 30 years beginning in 2015.

It aims at achieving an organized, integrated, sustainable and balanced development of the country by providing a framework for better national organization and linkages between different activities within the national space.

To implement the Plan, the Counties are expected to play a key role by mainstreaming strategies, policies, and measures identified in the NSP into the County spatial planning systems.

The guidelines have identified planning policies, strategies, and measures that Plans at the County level are expected to mainstream and propagate. The policies address among others, the protection of rich agricultural land, development imbalances, conservation of environmentally sensitive areas, urban containment, and promotion of industrial development.

The guidelines provide direction on the existing potentials, the opportunities, the constraints/challenges inhibiting harnessing of the potentials, the strategies to apply, respective policies required, and the necessary measures to achieve optimal productivity, sustainability, efficiency and equity in the use of county land resources.

The guidelines are an opportunity on how best to refocus, vary and complement areas that require different approaches responding to country-specific needs and promote the livelihoods of their people, while contributing to the national aspirations of vision 2030, regional objectives of the

Africa Agenda 2063, and international targets of sustainable development. The refocusing will also be handy in reviewing and making decisions on NSP which is due for review in 2025.

These guidelines are therefore a tool for enhancing this critical path and provide a direction for development planning by the Counties as they discharge their responsibility of preparing county and local physical and land use development plans. The guidelines will also ensure that the County Integrated Development Plans conform to the proposed County specific policy guidelines and measures.

DRAFT

## **PREFACE**

The National Spatial Plan(NSP) recognizes that Kenya is greatly endowed with massive and diverse resources distributed over the national space that require an integrated and coordinated approach for optimal productivity and sustainability.

The County Specific Guidelines have been derived from the National Spatial Plan and provide a planning framework for the integration of the NSP into the county spatial planning system. They are clear statements linking the National Spatial Plan to Inter-County, County and lower-level Physical and Land Use Development Plans and provide clarification on the anticipated sustainable development outcomes of implementing the Plan.

The County Government will adopt, develop and implement their plans based on the policies, strategies, and measures articulated in the guidelines. The realized county plans are expected to guide, harmonize and facilitate development within the county, hence contributing to the overall implementation of the NSP.

The guidelines also form an efficient compass and monitoring tool for National and County Governments to jointly pursue sustainable planning and appropriate implementation mechanisms.

For the county to be nationally competitive, there is need to balance development and promote optimal utilization of land and land-based resources as well as cultivate an integrated approach in addressing the intertwined challenges of regional imbalances/inequalities, rural development, underutilization of the available resources, uncontrolled urbanization, environmental degradation and inefficient transportation. It is imperative therefore, to prioritize the implementation of this strategic document so as to promote balanced development and competitiveness across the county

## **EXECUTIVE SUMMARY**

The County Specific Guidelines seek to facilitate the implementation of the National Spatial Plan by outlining policies, strategies and measures to guide County spatial planning and development and promote optimal productivity, sustainability, efficiency and equity in the use of land. They provide a framework for preparation of lower level Plans including Inter-County, County and Local Physical and Land Use Development Plans.

The disconnect between National and County Spatial Planning and development has resulted in uncoordinated and unbalanced development, therefore creating a need for a clear structure that links National, Regional and Local planning and development. This is achievable through integration of the policies, strategies and measures proposed by the guidelines into County Spatial Plans, Programs and Projects, to tackle challenges of unbalanced regional development, urbanization, national competitiveness and unsustainable use of land and natural resources.

The County Specific Guidelines are organized into five chapters detailing various facets. Chapter one provides an overview, purpose and justification of preparation of the guidelines. It also outlines the objectives that the guidelines intend to achieve and details the preparation process as well as intended users. This chapter highlights the key principles that form the basis for preparation of lower level plans including public participation, liveability, sustainable development, urban containment, smart urban growth among others.

Chapter two details the legal and policy provisions that the guidelines are anchored upon. They include, among others, The Constitution of Kenya, 2010, The Physical and Land Use Planning Act No.13 of 2019, County Government Act, 2012, Environmental Management and Coordination (Amendment) Act, 2015, Sessional Paper No. 01 of 2017 on National Land Use Policy and Sessional Paper No. 10 of 2012 on Kenya Vision 2030.

The third chapter analyses the county profile, detailing its location, size, bio-physical characteristics, socioeconomic status and the County's comparative advantage in relation to others. The locational context provides information on the geographical position and bordering Counties while the biophysical context discusses the topography, hydrology and climate. The socioeconomic status indicates key economic drivers of the County and its population and demographic structure.

Chapter four presents the County specific issues and proposes development strategies to promote national competitiveness, optimal use of land and resources, rural development, balanced intra-county development and urbanization. Additionally, it provides policy guidelines and measures for County advancement.

The final chapter five focuses on implementation and adoption of the guidelines. The implementation framework identifies institutions, County development programs and projects, and further ties them with responsible actors, resources and timeframes for effective execution. It proposes a framework for ensuring that the outlined policies, strategies and measures are adequately implemented.

DRAFT

## 1.3 Table of Contents

### Contents

Acknowledgments.....	ii
Foreword .....	ii
Preface.....	<b>Error! Bookmark not defined.</b>
Table of Contents .....	vii
List of Tables .....	ix
List of Maps.....	ix
List of Figures .....	ix
CHAPTER ONE .....	<b>Error! Bookmark not defined.</b>
1.0 Introduction .....	10
1.1 Background .....	10
1.2 Purpose of the Guidelines.....	10
1.3 Objectives of the Guidelines .....	10
1.4 Scope .....	11
1.5 Justification .....	12
1.6 Application of the guidelines .....	12
1.7 Process of Preparing the Guidelines.....	12
1.8 Targeted users.....	14
1.9 Key Principles .....	17
CHAPTER TWO .....	<b>Error! Bookmark not defined.</b>
2.0 Legal Policy and Planning Framework .....	18
2.1 Constitutional.....	18
2.2 Policy Context.....	18
2.3 Legal context .....	19
2.4 Planning Context .....	19
2.5 NSP linkage to other plans .....	20
CHAPTER THREE .....	<b>Error! Bookmark not defined.</b>
3.0 County Profile.....	23
3.1 Overview .....	23
3.2 Introduction .....	23
3.2.1 Location Context.....	23
3.3 Bio-Physical Context .....	25

3.4 Socio-Economic Status.....	25
3.5 County’s Comparative Advantage.....	29
3.6 County Specific Issues and Development Strategies.....	30
CHAPTER FOUR.....	<b>Error! Bookmark not defined.</b>
4.0 Spatial Plan Policy Guidelines for the County.....	38
CHAPTER FIVE.....	<b>Error! Bookmark not defined.</b>
5.0 Institutional Framework for Implementation.....	<b>Error! Bookmark not defined.</b>
5.1 Implementation Channels.....	52
5.2 Institutional framework for implementation.....	<b>Error! Bookmark not defined.</b>
5.3 National Physical Planning Council.....	52
5.4 National Technical Committee.....	53
5.5 County Physical Planning Committee.....	54
Conclusion.....	56

DRAFT

## 1.4 List of Tables

Table 1: Target users of the guidelines .....	14
Table 2: Population characteristics .....	26
Table 4: County Comparative Advantage .....	29
Table 5: Counties Specific Issues and Development Guidelines.....	31
Table 6: Policy Guidelines for the County .....	38

## 1.5 List of Maps

Map 1: Location of Elgeyo Marakwet .....	24
Map 2: Existing situation of Elgeyo Marakwet County .....	28
Map 3: NSP Proposal for Elgeyo Marakwet County.....	51

## 1.6 List of Figures

Figure 1: Scope of the guideline .....	12
Figure 2: Policy focus of the NSP.....	20
Figure 3: NSP linkages to other plans.....	22
Figure 4: NSP Implementation Organization Structure.....	55

# 1 INTRODUCTION

## 1.1 Background

The County Guidelines set out policies, strategies and measures that will guide the long-term spatial development of the county for a period of 30 years. They cover the entire county and defines the general trend and direction of its spatial development.

The guidelines have been developed in line with the four thematic areas as outlined in the NSP. They provide a guide to the Planning Authority at the county on how to incorporate the NSP policies, strategies and measures during the preparation of County Spatial Plans and other lower level plans like the Local Physical and Land Use Development Plans consequently implementing the NSP.

The NSP County Specific implementation guidelines summarize the County's existing potentials and opportunities, the constraints (challenges) inhibiting harnessing of the potentials, the applicable strategies and respective policies required, and the necessary measures to achieve optimal productivity, sustainability, efficiency and equity in the use of the county land resources. They act as a reference point

## 1.2 Purpose of the Guidelines

The purpose of the County Specific Guidelines is to provide a planning framework for mainstreaming of the National Spatial Plan to the County spatial planning system.

The guidelines are intended to assist the County enhance the implementation of the NSP by linking the proposed county specific policies, strategies and measures into the County plans, programs and projects while putting measures in place for achieving them. The guidelines inform preparation of various County Physical Plans such as the County Physical and Land Use Development Plans.

For optimal implementation of these plans, a County Integrated Development Plan (CIDP) is essential since it is a sectoral and budgetary based plan that draws its implementation programs and projects from the County Physical Plans.

### 1.3 Objectives of the Guidelines

The guidelines provide policies, strategies and measures to deal with challenges of regional imbalances/inequalities, rural development, underutilization of the available resources, urbanization, environmental degradation and inefficient transportation.

Specifically, the objectives are;

1. To sensitize the County on the provisions of the NSP
2. To promote synergy between National and County planning
3. To guide the County, implement the NSP
4. To identify the roles of the different actors in the implementation of the NSP.

### 1.4 Scope

The guidelines and strategies are specific to Elgeyo Marakwet County and cover the entire territory of the county measuring approximately 3,049.7 km<sup>2</sup>. The guidelines highlight the County's existing potentials and opportunities, the constraints (challenges) inhibiting harnessing of the potentials, the applicable strategies and respective policies required, and the necessary measures, actions, approaches, plans and procedures prescribed to achieve optimal productivity, sustainability, efficiency and equity in the use of the county's land resources and an outline of activities to execute agreed interventions as captured in the National Spatial Plan, as indicated in Figure 1 below. These guidelines are effective up to the year 2045.

The guidelines further describe the scope as the areas being addressed as;

Figure 1: Scope of the guideline



The NSP implementation guidelines for Elgeyo Marakwet county shall be viable till 2045.

### 1.5 Justification

Since the approval and launch of the NSP, its implementation has been undertaken in an uncoordinated manner hence the guidelines will provide a standardized approach for all Counties. The guidelines are also an important tool for tracking and evaluating implementation of the NSP both at National and County levels.

The preparation of County Spatial Plans and other lower-level plans which is a mandate of Counties has been slow and, in some Counties, has not begun at all. These guidelines are therefore a quick reference in preparation of county plans and for some Counties to help optimize land in the absence of these plans.

### 1.6 Application of the guidelines

The guidelines will be used or applied in the following ways to achieve a more sustained and coordinated development of the County;

- To effectively coordinate planning between the National and the County Government;
- To improve the County Government's capacity to formulate, coordinate and implement integrated development policies, strategies, measures, programs and projects to address spatially unbalanced development;
- To inform strategic infrastructure policy and public investment decisions which support the achievement of balanced development in the County;
- To strengthen County inter-sectoral coordination within a spatial framework and provide the private sector with a clear context in which they can make investment decisions;
- To optimize the use of land and natural resources by providing a framework for making sustainable locational choices for sustainable development and conservation of land productivity in the County.

### 1.7 Process of Preparing the Guidelines

The process involved reviewing the National Spatial Plan and identifying key issues, spatial policies, development strategies and measures specific to Elgeyo Marakwet County. These key issues, spatial policies, development strategies and measures will be realized through preparation of County and other lower-level plans.

Research was undertaken on various thematic areas to enrich the County specific issues and development strategies as well as policy guidelines and measures/ interventions. Further, preparation of the guidelines considered the constitutional, policy and legal provisions on physical and land use planning. Expert opinion was sought on the identified issues, policies, measures and strategies for implementation viability.

The preparation of the guidelines was identified as one of the implementation tools of the NSP, in which key NSP issues, policies, strategies and measures were translated into specific action plans, programs and projects at the County level.

### 1.8 Targeted users of the Guidelines

1 These Guidelines have diverse consumers and application depending on prevailing circumstances and actors as demonstrated in Table 1 below:

*Table 1: Target users of the guidelines*

<b>User</b>	<b>Application</b>
County Executive Committee Member in charge of Physical and Land Use Planning	<ul style="list-style-type: none"> <li>• Preparation of county and lower-level plans</li> <li>• Linkage of planning structures</li> <li>• Quality control of the various county plans</li> <li>• Formulate county planning policies and strategies</li> <li>• Establish county specific planning institutions</li> <li>• Coordinate and implement county plans and policies</li> </ul>
The County Director of Physical and Land Use planning	<ul style="list-style-type: none"> <li>• Advising the county government on the impact of the county specific guidelines to the county</li> <li>• Preparation of County physical and land use development plans and other lower level plans</li> <li>• Formulating County physical and land use planning policies, guidelines, strategies, and standards;</li> <li>• Issuance of development permission and other development control instruments under The Physical and Land Use Planning Act, 2013.</li> </ul>

Licensed physical and land use planners both in public and private sectors	<ul style="list-style-type: none"> <li>• Prepare, coordinate and implement spatial plans</li> <li>• Quality control of plans and consultancy services</li> <li>• Formulate policies, strategies and development guidelines</li> <li>• Dispute resolution</li> </ul>
County assembly	<ul style="list-style-type: none"> <li>• Approval of strategic sectoral budgets such as planning</li> <li>• Vetting of various County specific plans</li> <li>• Formulation and passing of County planning legislation</li> <li>• Enhance capacity to oversee the executive on spatial planning</li> </ul>
Ministries, Departments and Agencies	<ul style="list-style-type: none"> <li>• Mainstreaming relevant NSP policies, programs and projects</li> <li>• Allocation of resources to priority areas,</li> <li>• Strengthening linkages with spatial planning in resource management</li> </ul>
The National Land Commission (NLC)	<ul style="list-style-type: none"> <li>• Oversight role in land use planning to ensure efficient implementation of the NSP</li> <li>• Ensure relevant planning authorities carry out their functions as required by the law</li> </ul>
Practitioners in the built environment	<ul style="list-style-type: none"> <li>• Advance NSP relevant policies, programs and projects hence optimization of land resource</li> <li>• Appreciate sectoral Linkages to spatial planning</li> <li>• Facilitate incorporation of the policies, strategies and measures into, County specific plans</li> </ul>
Community, developers	<ul style="list-style-type: none"> <li>• Comprehend the County priority sectors and County Plans and policies</li> </ul>

and investors	<ul style="list-style-type: none"><li>• Complement County spatial planning and implementation measures</li><li>• Making informed investment decisions</li></ul>
Development partners	<ul style="list-style-type: none"><li>• Reference frame for selecting and funding spatial planning activities</li><li>• Understand planning linkages and implementation</li><li>• Informed development decisions</li></ul>
Training institutions	<ul style="list-style-type: none"><li>• Compliment the curriculum for training of spatial planners</li><li>• Understand the planning procedures and processes</li></ul>

DRAFT

## 1.9 Key Principles

The principles, as applied in the NSP, should guide and form the basis upon which the lower-level physical and land use plans are prepared. Further the principles should ensure sustainable, coordinated, and realistic development. They include the following:

- 1. Effective Public participation/engagement:** All plans shall be prepared in a participatory and consultative manner with relevant stakeholders and sectoral actors.
- 2. Urban containment/Compact cities:** Local plans shall strive to limit and control urban growth within the set urban boundaries to protect rich agricultural land, mitigate urban sprawl and reduce cost of infrastructural provision.
- 3. Livability:** The planning of urban areas shall enhance the livability index in the area of housing, environment, transportation, health, and social engagement. The urban areas must be economically viable, socially inclusive and ecologically sustainable.
- 4. Smart and green urban growth:** Plans shall promote sustainable use of energy, creation of green spaces, reduce the need for car travel, and promote use of local materials, support businesses, protection of heritage and creation of unique character.
- 5. Sustainable development:** Balancing social, economic and environmental dimensions of development and catering for current and future generations.
- 6. Promotion of ecological integrity:** Plans shall promote the protection and conservation of environmentally sensitive areas.
- 7. Promote public transportation:** Favor public transportation over private transport to ensure efficiency and functionality of urban places.
- 8. Balanced development:** Plans to ensure there/ is balanced development in the County to cure inequalities.

## **2 THE POLICY, LEGAL AND PLANNING FRAMEWORK FOR THE GUIDELINES**

### **2.1 Constitutional context**

The formulation of these guidelines took into account the Constitution of Kenya 2010 aspirations and Principles. Article 66 of the Constitution of Kenya 2010 gives the State powers to regulate use of any land and property in the interest of land use planning among others. The guidelines are therefore within and in response to the aspirations, values and principles as provided for in the constitution.

### **2.2 Policy Context**

#### **2.2.1 Sessional Paper No. 12 of 2012 on Kenya Vision 2030**

Kenya Vision 2030 is the overarching national development framework which all plans should be aligned to. The preparation of all spatial plans should take cognizance of the aspirations, foundations and development concepts of the vision. The preparation of the first National Spatial Plan is identified in Kenya Vision 2030 as a flagship project and is regarded as one of the foundations for socio-economic transformation. Hence the need for linkage between national planning and county planning which will be achieved through mainstreaming NSP requirements into CSPs and other lower-level plans by preparing NSP county specific guidelines to implement the NSP at lower levels.

#### **2.2.2 Sessional Paper No. 1 of 2017 on National Land Use Policy**

The policy was formulated to address the various challenges related to land use and ensure efficient, productive and sustainable use of land. The main goal of the policy is to provide legal, administrative, institutional and technological framework for optimal utilization and productivity of land related resources in a sustainable and desirable manner at national, County and community levels.

The policy recommends the preparation of a National Spatial Plan to provide an integrated framework for the development of the country including guidelines for sustainable rural and urban planning management. The policy also provides for the preparation of planning guidelines, policies and standards to be observed by County Governments and other sectoral agencies within the frameworks of approved physical and land use development plans. These guidelines

have been prepared on this basis and they are to be observed by counties in the implementation of the National Spatial Plan.

### 2.3 Legal context

Various Acts of Parliament are in place to provide the legal framework for the implementation of the mandate provided for in Article 66 of the Constitution. The Physical and Land Use Planning Act, 2019, The Urban Areas and Cities (Amendment) Act, 2019, County Governments Act No. 17 of 2012, The Land Act No. 6 of 2012, National Land Commission Act No. 5 of 2012 among others. The NSP County specific guidelines are prepared in this context and meet this criterion.

#### 2.3.1 The Physical and Land Use Planning Act 2019 (PLUPA 2019)

This is the overarching statute that provides for formulation of both national and county physical and land use planning policies, guidelines and standards. The Act further provides for administration, types, content, process and approval of the various types of Physical and Land Use Development Plans.

#### 2.0.1 County Governments Act, 2012

This statute mandates County Governments to carry out the planning function at the county level. The guidelines enhance the capacity to prepare the various county level plans that meet the recommended quality and standards.

#### 2.0.2 The Urban Areas and Cities Act, 2011

The statute provides for classification of urban areas and cities, their governance and management, and for integrated development planning. The guidelines are a basis for preparation of these lower-level plans.

#### 2.0.3 Environmental Management and Coordination (amendment) Act, 2015

The Act provides for the establishment of an appropriate legal and institutional framework for the management of the environment as well as guidelines relating to environmental management and prevention or abatement of environmental degradation. The guidelines take cognizance of this Act and will be implemented within the framework.

#### 2.0.4 National Land Commission Act, 2012

The Act mandates the National Land Commission with the management and administration of public land on behalf of the National and County Governments and to monitor and oversight

physical and lands use planning in the country. The guidelines fall within the ambit of this statute and will facilitate their oversight responsibilities.

## 2.4 Planning Context

### 2.4.1 National Spatial Plan (NSP)

The National Spatial Plan (NSP) covers the whole country encompassing the exclusive economic zone. The NSP outlines policies and strategies geared towards influencing desired future distribution and organization of human activity outlined in Vision 2030 and sectoral policies and plans. It aims at achieving economic efficiency and balanced development. The various County Spatial Plans should be aligned to the policies outlined in the NSP as demonstrated in Figure 2 below.

Figure 2: Policy focus of the NSP



To actualize the NSP, a comprehensive implementation strategy has been proposed that embraces a multiplicity of actors including National Government Ministries, Departments and Agencies, County Governments and the National Land Commission. The strategy proposes the establishment of the following institutions as key in the implementation of the Plan; The National Physical Planning Council, the National Technical Committee and the County Physical Planning Committee.

#### 2.4.2 NSP linkage to other plans

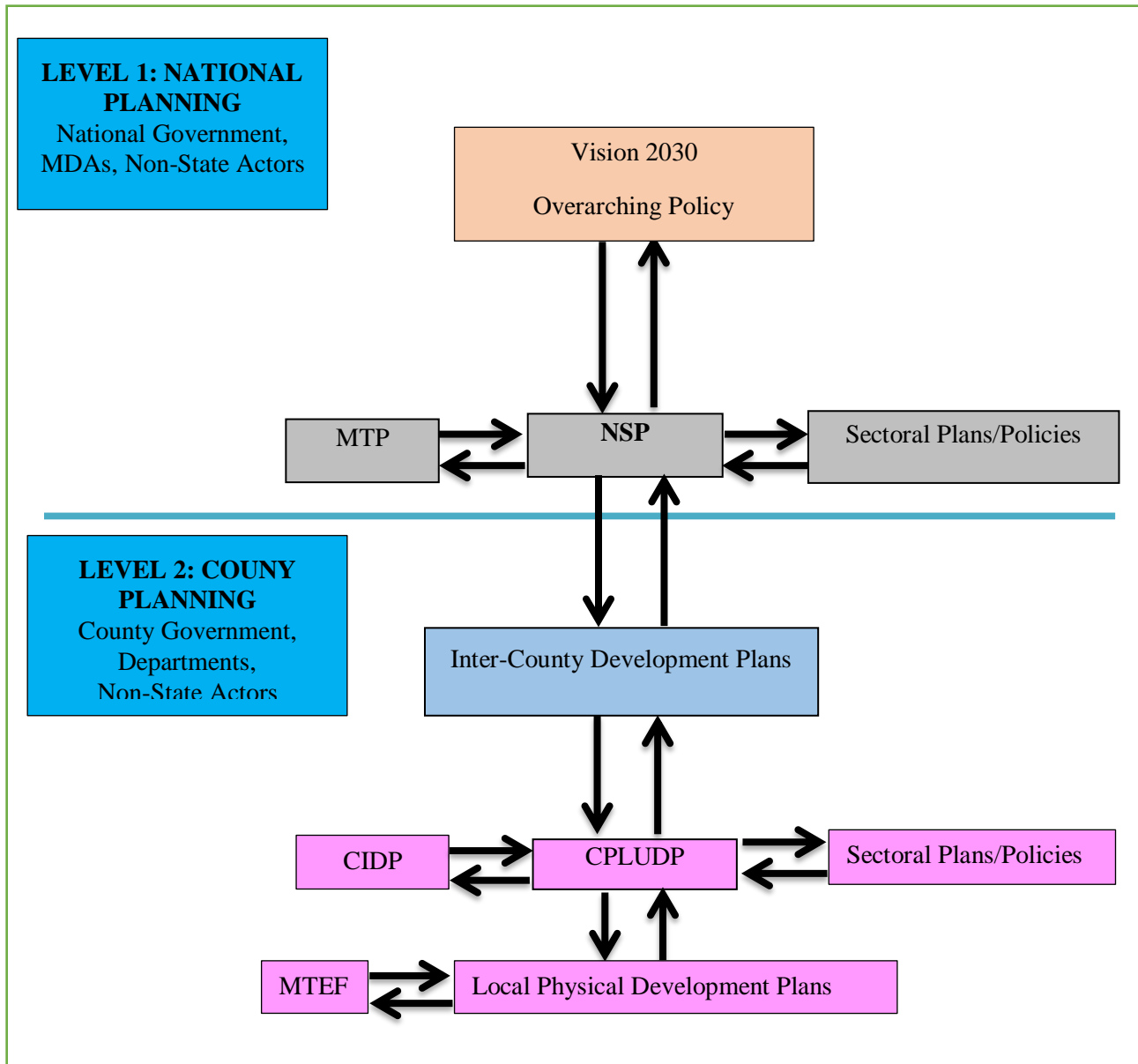
The linkage of the National Spatial Plan (NSP) to county and other lower-level plans is key to realization of its aspirations and the successful actualization of these plans. The NSP provides a spatial framework to ground the Vision 2030 flagships projects and form a basis for coordination of County policies, strategies, measures and plans.

Inter County and County plans take into considerations the policies, measures and strategies of the NSP and implements them actualizing its aspirations.

County Physical and Land Use Development Plans provide a framework where the CIDP draws its programs and projects. The implementation of the CIDP in turn leads to realization of the objectives of the County Physical and Land Use Development Plan.

DRAFT

Figure 3: NSP linkages to other plans



Source: The National Spatial Plan, 2015-2045

### **3 COUNTY PROFILE**

#### **3.1 Overview**

This chapter discusses a set of relevant information about Elgeyo Marakwet County. It provides information on the location, size, bio-physical features, socioeconomic status and looks at the comparative advantage of Elgeyo Marakwet County as compared to the other Counties in Kenya.

#### **3.2 Location Context**

Elgeyo Marakwet County covers a total area of 3029.6 km<sup>2</sup>. It extends from latitude 0° 20' to 1° 30' to the North and longitude 35° 0' to 35° 45' to the East. It borders West Pokot County to the North, Baringo County to the East, Trans Nzoia County to the Northwest and Uasin Gishu County to the West. The county has an elongated shape and is wedged in between the Uasin Gishu Plateau to the West and the Kerio River to the East. The Kerio River has its source in the southern highlands of the county and drains into Lake Turkana.

Map below shows the location of Elgeyo Marakwet County in Kenya.

Map 1: Location of Elgeyo Marakwet



Source: Department of Physical Planning

### 3.3 Bio-Physical Context

**Topography;** The county is divided into three topographic zones namely: Highlands, Kerio Valley and Escarpment: all of them separated by the conspicuous Elgeyo Escarpment.

**Forests and Rivers;** The county is home to two forest ecosystems and water towers namely Kaptagat and Cherangany and hosts the second largest forest cover in Kenya of 37.6%. These ecosystems are a source of many rivers that form the main water divide running along the Escarpment. East of the water divide is the Kerio catchment area which drains into Lake Turkana while West of the divide is the Lake Victoria Basin which drains into Lake Victoria. Lake Victoria Basin includes the following rivers: Moiben, Chepkaitit and Sabor. The Kerio catchment area includes River Kerrer and Kerio River. The other major rivers in the county are Torok, Cheseгон, Embobut, Embomon, Arror, Mong and Kimwarer. The rivers feeding Kerio River have a high potential for supporting irrigation activities and for generation of Hydro-electric power. Another ecological zone is the Kerio Valley. It is narrow, averaging 6.4 km in width and stretches about 150 km in a North-South direction.

**Climate;** The County has a relatively cool climate with varied rainfall levels across the County. This is because of the geomorphology/topography that is characterized by three distinct agro-ecological zones namely; the highlands to the west, the escarpment (hanging valley) and the lowlands (valley) to the east. The variation in altitude from 900 m above sea level in the Kerio Valley to over 3000 m above sea level in the highlands gives rise to considerable differences in climatic conditions.

**Temperature;** Annual mean temperatures on the highland range from 18<sup>0</sup>c – 22<sup>0</sup>c while down in the valley, it ranges from 25<sup>0</sup>c – 28<sup>0</sup>c. The average annual rainfall in the county ranges from 700 mm in the semi-arid Kerio valley to 1700 mm on the Keiyo and Marakwet highlands (Cherangany Hills). The County thus shows a trend of decreasing rainfall from west to east. It is the eastern lowlands of the county that exhibit lower and less reliable rainfall as well as being a part of the county that is most at risk of drought and floods.

### 3.4 Socio-Economic Status

**Demography:** The county's total population was 454,480 according to the 2019 National Population and Housing Census with a male and female ratio of about 1:1.

The population of the county has been grouped into three broad age groups: 0-14 years constituting children, 15-64 years the working or economically active group and the 65 years old and above constituting the aged. In the county, there is a high concentration of the population in the age group 0-14. However, the greater proportion of the population falls within the working age group indicating a high potential for labor force and a low dependency ratio.

The table below gives a brief description of the population characteristics and projected trends of the county;

*Table 2: Population characteristics*

Year	2019	2020	2025	2030	2035	2040	2045
Population Size	454,480	467,205	480,278	493,735	507,559	521,770	536,379
<b>Male</b>	227,415	233,698	240,232	246,955	253,912	260,997	268,291
<b>Female</b>	227,065	233,507	240,046	246,780	253,647	260,773	268,088
Household	100,995	103,823	106,730	109,718	112,791	115,949	119,195
Area	3049.7km <sup>2</sup>						
Density	149	153	157	161	166	171	175

*Source: 2019 Kenya Population and Housing Census*

**Health:** Iten County Referral Hospital is the main referral facility for the county. There are also six sub-county hospitals, one mission hospital, 28 health centres, 92 dispensaries and 22 private clinics in the County. The average distance to a health facility is 3.7 Km as compared to the national average which stands at 5Km and can be attributed to the construction of new facilities. The County has a wide range of health facilities distributed all over the county and provided by the Government, Faith-based Organizations (FBOs), Non-Governmental Organizations (NGOs) and private institutions.

**Education and Literacy:** The county had 615 Early Childhood Development (ECD) centres in the county, 470 public and 145 private centres. Enrollment in public pre-primary centres was at 34,120 learners of which 15,517 are boys representing 45.4% while girls are 16,603 representing 54.6% in 2017. Gross Enrolment Rate (GER) increased marginally from 70.4% in 2013 to 74.6% in 2017 though slightly below the national average of 76%. The County has 459 primary schools; 405 are public while 54 are private. The current enrollment in primary school

is 116,464 pupils with the population of boys being 58,607 while that of girls is 57,857. There are 114 secondary schools in the county with a total enrollment of 34,306 students of which 16,067 are boys, and 18,234 are girls. In terms Tertiary Education The county has one Teacher Training College (TTC) in Tambach, two medical training colleges in Iten County Referral Hospital (ICRH), and one African inland church (AIC) Kapsowar mission hospital. There is no university in the county although there are proposals to establish one at Tambach TTC and Endo. For Adult and Continuing Education there are 70 adult education centres in the county with an enrollment of 5,437. Of this, 1,799 are male, and 3,638 females. Non-Formal Education Currently, there is no non-formal education within the county. But there is enormous need to adopt them so as to cater for children with disabilities and young mothers who miss out of school in early age

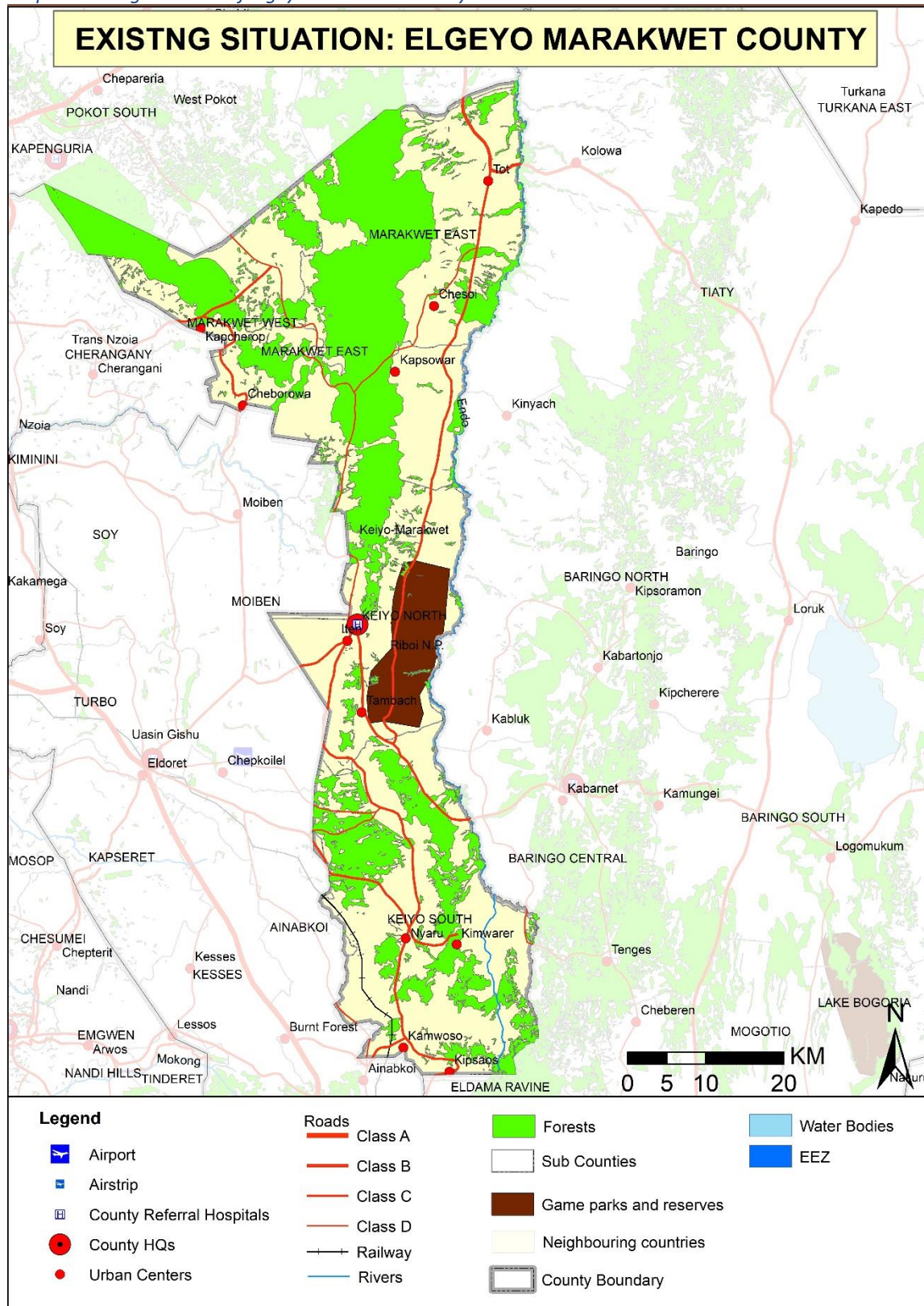
**Technical, Vocational Education and Training, (TVET)** The TVET programme in the county is institution based and are offered both at public and private Vocational Training centres. Currently, there are eleven operational VTCs with a total enrolment of 1,422 students compared to 925 total students enrolled in 2013 representing 34.9% increase in overall enrolment.

**Human development index (HDI) and Poverty level:** Elgeyo Marakwets' HDI stands at 0.53 which is lower than the national HDI of 0.520. This can be partly attributed to the ecological zones of the county with Kerio Valley region recording high poverty index.

The table below describes the uniqueness or the comparative advantages of Elgeyo Marakwet as a county;

The table below describes the existing situation of Elgeyo Marakwet County;

Map 2: Existing situation of Elgeyo Marakwet County



Source: Department of Physical Planning

### 3.5 County's Comparative Advantage

The table below describes the key comparative advantages of the county.

*Table 3: County Comparative Advantage*

<b>SECTOR</b>	<b>COUNTY'S COMPARATIVE ADVANTAGE</b>
NATURAL RESOURCES AND ENVIRONMENT	<ul style="list-style-type: none"> <li>➤ The county has both the natural and planted main forest types occupying a total area of 93,691.28Ha with gazetted forests; Embobut, Kipkabus and Chebara.</li> <li>➤ Several mineral deposits found within the county. Notably are fluoride deposits in Kimwarer, Tullow Oil Company has conducted several surveys and feasibility tests in Kerio Valley for oil prospecting, scanty gold deposits available along river Aror &amp; Mbobut and Marble stones in Aror area.</li> </ul>
HUMAN SETTLEMENT	<ul style="list-style-type: none"> <li>➤ The county has an even distribution of the working population within its major urban centres.</li> </ul>
ECONOMY	<ul style="list-style-type: none"> <li>➤ The Rimoi game reserve which is richly endowed with diverse flora and fauna. For wildlife, the elephant provides a unique characteristic: the largest herd of elephants found in one location in Central and East Africa.</li> <li>➤ Huge irrigation potential covering the entire Kerio Valley and some sections of the escarpment and highland zones.</li> </ul>
TRANSPORT	<ul style="list-style-type: none"> <li>➤ Existing major transport network.</li> </ul>
INFRASTRUCTURE	<ul style="list-style-type: none"> <li>➤ Existing: Health, Education and other Social Services.</li> </ul>

## **4 DEVELOPMENT STRATEGIES AND POLICY GUIDELINES FOR ELGEYO MARAKWET COUNTY**

### **4.1 County Specific Issues and Development Strategies**

This section provides strategies for spatial growth and development of the County by addressing the factors that prevent the County from achieving the intended development goals and objectives.

The development strategies aim at managing the overall development impacts, optimizing use of natural resources, creating a balanced County and transforming rural areas. Specifically, the development strategies have been proposed to address the following aspects of the County's development agenda:

- Managing the national competitiveness
- Optimal use of land and other resources
- Promoting balanced Intra- County development
- Rural development in the county
- Urbanization

The following are detailed NSP sector-specific issues and strategies that apply to Elgeyo Marakwet County:

Table 4: Counties Specific Issues and Development Guidelines

<b>Strategy 1: Enhancing Impacts of National Competitiveness</b>		
<b>Sector: Economy</b>		
<b>Opportunities</b>	<b>Constraints</b>	<b>Strategies</b>
Member of North Rift Economic Block (NOREB) to spur economic development within the region and to foster peaceful co-existence	<ul style="list-style-type: none"> <li>➤ Delays in implementation of national projects such as Aror and Kimwarer</li> <li>➤ The bloc is yet to take off</li> </ul>	<ul style="list-style-type: none"> <li>➤ County should fully participate in the affairs of the bloc</li> <li>➤ Regular monitoring and strict enforcement of the applicable law in national projects</li> <li>➤ Offer incentives to attract investors in tourism and mining sector industry to the county</li> </ul>
<b>Strategy 2: Optimizing Land and Natural Resources</b>		
<b>Sector: Natural resource and environment</b>		
<b>Opportunities</b>	<b>Constraints</b>	<b>Strategies</b>
<p>Livestock and agriculture potential</p> <p>Favorable climatic conditions for farming</p> <p>Presence of permanent rivers and potential for construction of dams for irrigation and other uses</p>	<ul style="list-style-type: none"> <li>➤ Unsustainable land use practices</li> <li>➤ Communal land tenure system leading to insecurity of tenure</li> <li>➤ Poor agricultural support infrastructure</li> <li>➤ Inadequate and/or poorly developed irrigation facilities</li> <li>➤ Inadequate rainwater harvesting technology</li> <li>➤ Lack of regulatory framework in exploitation of underground water</li> <li>➤ Cattle rustling and banditry</li> </ul>	<ul style="list-style-type: none"> <li>➤ Formulate policies to tap the agricultural capability and potentials of the county</li> <li>➤ Formulate policies to guide on security of land tenure especially in the community land</li> <li>➤ Transportation infrastructure in agricultural areas should be improved</li> <li>➤ Optimize rain water harvesting particularly storm water</li> <li>➤ Invest in appropriate technology and water management infrastructure</li> <li>➤ Develop measures and policy against hostile practices</li> </ul>
<b>Sector: Human Settlement</b>		
<b>Opportunities</b>	<b>Constraints</b>	<b>Strategies</b>

<p>Vast land for human settlement &amp; development</p> <p>Favorable climatic conditions for human settlement</p>	<ul style="list-style-type: none"> <li>➤ Fragmentation of land into uneconomical parcels due to population pressure</li> <li>➤ Climate change leading to unexpected drought, floods, high temperatures, land degradation</li> </ul>	<ul style="list-style-type: none"> <li>➤ Stop further fragmentation of agricultural land and explore land consolidation strategy</li> <li>➤ Develop policy on better farming &amp; land use practices that are in line with the climate change action</li> </ul>
<p><b>Strategy 3: Conservation and Protection Areas</b>  <b>Sector: Natural Resource and Environment</b></p>		
<p><b>Opportunities</b></p>	<p><b>Constraints</b></p>	<p><b>Strategies</b></p>
<p>Water towers, Wetlands, Natural Forest, Water bodies (rivers), Mountains, parks and conservancies.</p> <p>High potential for ground water harvesting in some areas.</p> <p>Diverse biodiversity.</p>	<ul style="list-style-type: none"> <li>➤ Encroachment by human settlement and activities</li> <li>➤ Soil erosion and loss of vegetation</li> <li>➤ Environmental pollution</li> <li>➤ Drying up of water sources</li> <li>➤ Unsustainable abstraction of water</li> </ul>	<ul style="list-style-type: none"> <li>➤ Increase forest cover through afforestation, re-forestation and agro forestry</li> <li>➤ Conserve the protected areas</li> <li>➤ Controlled development in these areas except for the purpose of eco-tourism and research.</li> <li>➤ Development control</li> </ul>
<p><b>Sector: Economic</b></p>		
<p><b>Opportunities</b></p>	<p><b>Constraints</b></p>	<p><b>Strategies</b></p>
<p>Manufacturing potential in agro based industries like dairy processing, horticulture and meat (particularly beef) processing</p> <p>Notable tourist attractions</p>	<ul style="list-style-type: none"> <li>➤ Poor linkage to markets</li> <li>➤ Inadequate transport infrastructure</li> <li>➤ Price fluctuations</li> <li>➤ Lack of established value chains</li> <li>➤ Insufficient market for finished products</li> <li>➤ Underexploited tourism potentials</li> </ul>	<ul style="list-style-type: none"> <li>➤ Provide adequate and supportive transport infrastructure</li> <li>➤ Promote assertive marketing campaigns for products both domestically and internationally</li> <li>➤ Promote the formation of cooperatives and Saccos to advance marketing</li> </ul>

	<ul style="list-style-type: none"> <li>➤ Poor marketing strategies to promote tourism</li> <li>➤ Poaching and human wildlife conflicts</li> </ul>	<ul style="list-style-type: none"> <li>➤ Provide appropriate technology to enhance value addition</li> <li>➤ Strict enforcement of the existing regulations for safeguarding protection areas.</li> <li>➤ Promote domestic tourism by providing incentives and subsidies</li> <li>➤ Open up under-utilized sites</li> <li>➤ Enhance security in tourism potential areas</li> <li>➤ Provide appropriate tourism support infrastructure and facilities</li> </ul>
<b>Sector: Transport</b>		
<b>Opportunities</b>	<b>Constraints</b>	<b>Strategies</b>
An extensive intra county road network well linked to the national road system.	<ul style="list-style-type: none"> <li>➤ Most intra county roads are in poor conditions</li> <li>➤ Lack of coordination of activities by various agencies in charge of the sector</li> <li>➤ Inadequate NMT infrastructure</li> <li>➤ Inadequate or lack of terminal facilities</li> <li>➤ Transport system not fully integrated</li> </ul>	<ul style="list-style-type: none"> <li>➤ Upgrading of all the roads</li> <li>➤ Enforce a regulatory standard requirement for all public transport service operators</li> <li>➤ Preserve and secure adequate land for future transport and other related infrastructural development</li> <li>➤ Promote the purchase and use of high occupancy public transport vehicles</li> <li>➤ Create linkages to agricultural, tourist and urban areas</li> <li>➤ Encourage private sector participation</li> </ul>
<b>Strategy 4: Public Utilities</b>		
<b>Sector: Infrastructure (water and sanitation)</b>		
<b>Opportunities</b>	<b>Constraints</b>	<b>Strategies</b>

Financial and technical support from the national government and non-governmental organizations in provision of water and sanitation facilities	<ul style="list-style-type: none"> <li>➤ Inadequate accessibility to portable water points</li> <li>➤ Inadequate maintenance on sanitation facilities in urban and rural areas</li> </ul>	<ul style="list-style-type: none"> <li>➤ Improve sanitation infrastructure including collection, disposal and treatment system be developed in all urban and rural set ups</li> </ul>
<b>Sector: Infrastructure (Energy)</b>		
<b>Opportunities</b>	<b>Constraints</b>	<b>Strategies</b>
Rivers and dams  Renewable energy sources	<ul style="list-style-type: none"> <li>➤ Overreliance on non-renewable energy sources</li> <li>➤ Lack of proper assessment and research</li> <li>➤ Lack of relevant policy framework to guide tapping and use of energy sources</li> </ul>	<ul style="list-style-type: none"> <li>➤ Develop infrastructure for harnessing, transmitting and distributing renewable energy</li> <li>➤ Formulate policy framework to guide exploitation of green energy</li> <li>➤ Implement Energy efficiency systems and energy demand management systems to ensure efficient and productive use of energy.</li> </ul>
<b>Sector: Infrastructure (ICT)</b>		
<b>Opportunities</b>	<b>Constraints</b>	<b>Strategies</b>
Increased demand in technological services  Laying of fiber optic network	<ul style="list-style-type: none"> <li>➤ Slow adaptation and establishment of ICT services and the modern technologies i.e., fiber</li> </ul>	<ul style="list-style-type: none"> <li>➤ Mainstream ICT at all sectors to promote service delivery, increase efficiency and productivity and improve on existing platforms such as Huduma centre, BPO services and E-government</li> <li>➤ Expand the fiber optic network to all urban areas to increase the coverage and data connectivity and increase access for rural population</li> </ul>
<b>Sector: Infrastructure (Education)</b>		
<b>Opportunities</b>	<b>Constraints</b>	<b>Strategies</b>

Fair distribution of Early Childhood Development Education (ECDE) Centers, primary & secondary schools and TVETs across the county.	➤ Poor or inadequate infrastructure in terms of classrooms and equipment	<ul style="list-style-type: none"> <li>➤ Sustain the staffing levels of ECD</li> <li>➤ Development and upgrading of education Infrastructure</li> <li>➤ Continued investment and improvement of TVETs in both staffing and physical infrastructure</li> </ul>
<b>Sector: Infrastructure (Health)</b>		
<b>Opportunities</b>	<b>Constraints</b>	<b>Strategies</b>
<p>Devolution</p> <p>Greater drive by both county and national governments to upgrade health facilities</p>	<ul style="list-style-type: none"> <li>➤ Inadequate healthcare centres in some parts of the county</li> <li>➤ Inadequate medical equipment, personnel and basic supplies in existing facilities</li> <li>➤ Increasing costs of medical services</li> </ul>	<ul style="list-style-type: none"> <li>➤ Increase number and even distribution of healthcare centres in all parts of the county</li> <li>➤ Enhance transport infrastructure to ease access to these centres and emergency referrals to larger facilities</li> <li>➤ Strive towards reaching the WHO recommended professional to patient ratio by training employing more qualified staff</li> <li>➤ Provide low-cost health insurance schemes targeting low-income earners to improve their access to quality healthcare</li> </ul>
<b>Sector: Infrastructure (Housing)</b>		
<b>Opportunities</b>	<b>Constraints</b>	<b>Strategies</b>
Governments developmental agenda on provision of affordable housing	<ul style="list-style-type: none"> <li>➤ Housing demand outstrips supply hence deficit in supply of good quality housing</li> <li>➤ Little government involvement in housing provision leaving it to private developers</li> </ul>	<ul style="list-style-type: none"> <li>➤ Promote affordable housing schemes in urban areas through partnerships with both large and small-scale providers (such as women and youth groups)</li> </ul>

<b>Strategy 5: Promoting A Balanced Regional &amp; Rural Development</b>		
<b>Opportunities</b>	<b>Constraints</b>	<b>Strategies</b>
<p>Resource endowment including fertile soils, forests, favorable climatic conditions, wildlife and forest cover, minerals among others</p> <p>Human resource (both skilled and unskilled)</p> <p>Existing infrastructure</p> <p>Devolution</p> <p>Enabling policy framework</p>	<ul style="list-style-type: none"> <li>➤ Inadequate infrastructural facilities and services</li> <li>➤ Under-exploitation of resources</li> <li>➤ Weak linkages between rural-urban areas.</li> </ul>	<ul style="list-style-type: none"> <li>➤ Promote and establish strong rural urban linkages</li> <li>➤ Promote investment in sustainable tourism including eco-tourism</li> <li>➤ Explore economic and sustainable exploitation of minerals and natural resources</li> <li>➤ Promote industrialization and value addition through the provision of support infrastructure in the less developed regions as well as strengthening the better developed regions.</li> </ul>
<b>Strategy 6: Urbanization</b>		
<b>Sector: Economic and Housing</b>		
<b>Opportunities</b>	<b>Constraints</b>	<b>Strategies</b>
<p>Human resource (both skilled and unskilled)</p> <p>Enabling policy framework</p> <p>Existing infrastructure</p> <p>Devolution</p>	<ul style="list-style-type: none"> <li>➤ Weak rural-urban linkages</li> <li>➤ Deteriorating infrastructure &amp; utilities</li> <li>➤ Proliferation of informal settlements</li> <li>➤ Weak and uncoordinated development control and enforcement systems</li> <li>➤ Little government involvement in housing provision which has left in the hands of private developers</li> </ul>	<ul style="list-style-type: none"> <li>➤ Promote the rural-urban linkages</li> <li>➤ Improve infrastructural standards and develop policies to monitoring and their evaluation</li> <li>➤ Enforce, harmonize and regularly review the existing legislative and regulatory instruments in development control</li> <li>➤ Bridge the gap between housing demand and supply with private sector involvement</li> </ul>

	<p>➤ Poor implementation of development plans and planning policies</p>	<p>➤ Vigorous land readjustment and provide infrastructure in informal settlements &amp; in agricultural areas</p> <p>➤ Strengthen the implementation processes of development plans and policies</p>
--	---	---

DRAFT

## 4.2 National Spatial Plan Policy Guidelines and Guidelines for the County

This section seeks to provide the spatial policy guidelines and measures aimed at promoting the achievements of the objectives of the National Spatial Plan using its guidelines. They aim at enhancing global and national competitiveness and economic efficiency, optimizing the use of land and natural resources, promoting regional balanced development and conservation of the environment.

These policies are supported by a wide range of measures which spell out the specific actions to be undertaken to actualize the policy intentions. The policies shall ensure that the County is nationally competitive as an investment destination, especially in emerging sectors such as the ICT. The policies will also be implemented by the County government's agencies responsible for planning and development control as well as the authorities responsible for land administration.

The following are policies and measures specific to Elgeyo Marakwet County.

*Table 5: Policy Guidelines for the County*

<b>No</b>	<b>Thematic Area</b>	<b>Policy Guidelines</b>	<b>Measures</b>
1.	Resource Potential Growth regions	<ul style="list-style-type: none"> <li>➤ County to be developed based on its rainfed agriculture and livestock production and irrigation potential</li> <li>➤ Enhanced agricultural production and value addition</li> <li>➤ Investment in social and physical infrastructure</li> </ul>	<ul style="list-style-type: none"> <li>➤ Enhanced agricultural and food production</li> <li>➤ Infrastructure provision to support value addition initiatives and human settlement</li> <li>➤ Rural development through provision of infrastructure, agricultural sector development and related economic activities</li> <li>➤ Development and rehabilitation of key infrastructure in underserved locations</li> </ul>
2.	County Spatial Structure	<ul style="list-style-type: none"> <li>➤ Adopt an established framework by the NSP in achieving the preparation of lower tier integrated &amp; sustainable land use developments plans</li> </ul>	<ul style="list-style-type: none"> <li>➤ All the county level plans and policies shall be guided by the NSP</li> <li>➤ Existing physical/spatial plans in the county shall be reviewed to conform to objectives and policies of the NSP.</li> </ul>

			<ul style="list-style-type: none"> <li>➤ Planning authorities at the county shall be supported with adequate human, financial and technical resources to promote sustainable Physical/spatial planning and development.</li> </ul>
3.	Enhancing National Competitiveness	<ul style="list-style-type: none"> <li>➤ The major urban areas shall be planned and provided with appropriate infrastructure to enhance efficiency and quality of life</li> </ul>	<ul style="list-style-type: none"> <li>➤ Establish appropriate trunk infrastructure in the form of reliable energy, water, sanitation and ICT.</li> <li>➤ Advance Technological Readiness through the provision of technological centers linked to different levels all over the country e.g., Science parks, Research laboratories etc.</li> <li>➤ Improve the road infrastructure by providing for modal split, linkages and interchanges.</li> </ul>
		<ul style="list-style-type: none"> <li>➤ Land and natural resources of the less developed areas shall be utilized optimally and sustainably</li> </ul>	<ul style="list-style-type: none"> <li>➤ Encourage the transformation from traditional farming and livestock keeping methods to modern practices</li> <li>➤ Identify and develop the tourism potential within the central circuit</li> <li>➤ Widen the economic base of the less developed regions and places through strengthening of agricultural downstream processing of agricultural products</li> <li>➤ Explore and exploit the mineral, energy and water potentials</li> <li>➤ Provide transportation networks and other infrastructure necessary to support exploitation of land and other natural resources</li> </ul>

			<ul style="list-style-type: none"> <li>➤ Support development of urban areas in the less developed areas to catalyze development</li> </ul>
		<ul style="list-style-type: none"> <li>➤ The efficiency of the transportation network shall be enhanced to take advantage of the strategic location and position of the country</li> </ul>	<ul style="list-style-type: none"> <li>➤ Enhance railway and road coverage and connectivity to cover the whole country</li> <li>➤ Spatial development plans shall be prepared for the main transportation corridors to guide the planning and development of the corridors for sustainable economic development and transportation</li> </ul>
4.	Modernizing Agriculture (Transition climatic zones i-iii to iv)	<ul style="list-style-type: none"> <li>➤ The agricultural use of land in high potential areas shall be intensified to increase productivity.</li> <li>➤ The use of land in high agricultural potential areas shall be intensified to increase productivity</li> <li>➤ The fishing potential of the country shall be optimized to increase the food stock and export earnings</li> </ul>	<ul style="list-style-type: none"> <li>➤ Prepare and implement County spatial plan to protect agricultural land</li> <li>➤ Prepare urban spatial development plans for all urban areas in the county to urban growth limits.</li> <li>➤ Prohibit/control change of use and subdivision for designated agricultural land.</li> <li>➤ Adopt modern agricultural methods</li> <li>➤ Provide transport connectivity and adequate inter and intra-road networks as well as other social and physical infrastructure</li> <li>➤ Value addition to agricultural and livestock products.</li> </ul>

5.	Diversifying Tourism (central and great rift valley circuit)	<ul style="list-style-type: none"> <li>➤ The county shall promote diversification of tourism by promoting the diverse products available in the county as well as adding more where possible.</li> <li>➤ Appropriate tourism support infrastructure and facilities shall be provided.</li> <li>➤ Governance of the tourism sector shall be enhanced.</li> </ul>	<ul style="list-style-type: none"> <li>➤ Prepare a county tourism development master plan which should focus on tourism sites zoning, product development and quality standard of tourism services.</li> <li>➤ Carry out an inventory of tourism infrastructure and facilities in Sothern/Northern circuit.</li> <li>➤ Formulate planning regulations and standards to guide tourist specific infrastructure and facilities.</li> <li>➤ Adopt low carbon and green tourism infrastructure options.</li> <li>➤ Provide and upgrade the ICT infrastructure to support tourism.</li> <li>➤ Identify, map and prepare subject plans to protect all wildlife areas &amp; migratory corridors.</li> <li>➤ Undertake research to identify more tourist attraction areas and sites, develop Agro tourism sites.</li> </ul>
6.	Managing Human Settlements	<ul style="list-style-type: none"> <li>➤ The expected increase in population in urban areas shall be anticipated and accommodated particularly for the main growth areas.</li> </ul>	<ul style="list-style-type: none"> <li>➤ Increase in the housing stock by planning and redeveloping existing housing areas.</li> <li>➤ Formulate enabling local policy frameworks to support employment and income generation.</li> <li>➤ Develop urban centres as intermediate centres between the rural and the principal towns.</li> </ul>

		<ul style="list-style-type: none"> <li>➤ Rural growth centres shall be rationalized and supported to act as central places and settlements clustered to free the rich agricultural land</li> </ul>	<ul style="list-style-type: none"> <li>➤ Provide basic services such as extension services, health facilities, markets, sanitation, water, power and education to improve the quality of rural life.</li> <li>➤ Undertake sensitization and awareness campaigns on the need to conserve agricultural land by discouraging land fragmentation.</li> <li>➤ Progressively link growth centres by means of secondary roads as a minimum.</li> <li>➤ Promote sectors such as agriculture that have potential to stimulate rural development</li> <li>➤ Incorporate disaster management and mitigation in planning of rural settlements.</li> </ul>
		<ul style="list-style-type: none"> <li>➤ Human settlements shall be developed in line with environmental and natural resources conservation to improve living conditions</li> </ul>	<ul style="list-style-type: none"> <li>➤ Prepare and implement zoning guidelines to ensure compatibility of land uses in human settlement areas.</li> <li>➤ Promote social organization and environmental awareness through the participation of local communities in the identification of public service needs.</li> <li>➤ Strengthen the capacity of the local governing bodies to effectively deal with environmental challenges associated with rapid and sound urban growth.</li> <li>➤ Encourage non-motorized transport (NMT) and streamlining of public mass transport in major cities and urban centres for efficiency and economy.</li> </ul>

		<ul style="list-style-type: none"> <li>➤ The NSP advocates for the provision of an efficient, reliable and effective transport system for human settlements</li> </ul>	<ul style="list-style-type: none"> <li>➤ Improve the road conditions and expand the linkages to human settlements</li> <li>➤ Integrate NMT with existing transport infrastructure.</li> <li>➤ Incorporate the concept of green energy in transport systems planning and redevelopment.</li> <li>➤ Prepare a transportation strategy for each urban area, as part of the integrated urban development plan required under the Urban Areas and Cities Act 2011, in collaboration with the National Government.</li> </ul>
		<ul style="list-style-type: none"> <li>➤ The management and governance of human settlements particularly the urban areas shall be improved.</li> </ul>	<ul style="list-style-type: none"> <li>➤ Build institutional capacities of the urban areas management boards.</li> <li>➤ Integrate technology in management of human settlements to strengthen urban data systems.</li> <li>➤ Provide adequate human resource and improve their capacity in management of human settlements in the sectors of housing, settlement, land, infrastructure, construction, energy and disaster management.</li> <li>➤ Conduct research into migration trends to inform effective planning and provision of human settlements.</li> <li>➤ Enable public private partnerships in the provision of housing.</li> </ul>
		<ul style="list-style-type: none"> <li>➤ NSP advocates for upgrading of the existing informal settlements and forestalling of new informal settlements.</li> </ul>	<ul style="list-style-type: none"> <li>➤ Encourage redistribution of urban income through integrated development planning encompassing social, economic and physical factors.</li> </ul>

			<ul style="list-style-type: none"> <li>➤ Prepare Local Physical Development Plans for purpose of renewal and/or redevelopment of the informal settlements.</li> <li>➤ Formulate a housing policy that will focus on providing affordable and accessible housing.</li> <li>➤ Ease the process of issuance of ownership documents to the legal owners in order to encourage formal developments.</li> </ul>
		<ul style="list-style-type: none"> <li>➤ Peri-urban development shall be managed and controlled to contain urban growth within its limits and protect rural land uses.</li> </ul>	<ul style="list-style-type: none"> <li>➤ Formulate policy for urban containment and densification.</li> <li>➤ Formulate and implement planning legislation on peri-urban planning and management.</li> <li>➤ Institute sanctions on idle land to encourage productive and sustainable land utilization.</li> <li>➤ Incentivize local farmers to preserve agricultural land by promoting local production and providing ready markets for agricultural produce.</li> </ul>
7.	Conserving the Natural Environment	<ul style="list-style-type: none"> <li>➤ All environmentally sensitive areas shall be protected and utilized in a sustainable manner.</li> </ul>	<ul style="list-style-type: none"> <li>➤ Prepare and implement integrated management plans for Environmental sensitive areas.</li> <li>➤ Involve and empower communities in the management of environmentally sensitive areas and promote environmental education and awareness.</li> <li>➤ Strengthen Environmental Governance and harmonize sectoral policies, legislation and regulations.</li> </ul>

		<ul style="list-style-type: none"> <li>➤ National and County Physical Planning departments shall mainstream climate change into their planning processes.</li> </ul>	<ul style="list-style-type: none"> <li>➤ Build and strengthen research capacity on climate change and related environmental issues.</li> <li>➤ Promoting growing of drought tolerant traditional high value crops.</li> <li>➤ Develop and promote the use of green energy.</li> </ul>
8.	Integrating the National Transportation Network	<ul style="list-style-type: none"> <li>➤ An integrated and functional transport system for the national and urban areas shall be developed.</li> </ul>	<p><b>Rail Transport:</b></p> <ul style="list-style-type: none"> <li>➤ Expand and develop the railway network as the core mode of transportation in the country to optimize on land use, limit pollution, reduce road degradation, maximize on freight and passage carriage and improve efficiency and facilitate the trans-shipment of heavy and hazardous goods.</li> </ul> <p><b>Road Transport:</b></p> <ul style="list-style-type: none"> <li>➤ Provide access and linkage, between county headquarters and sub-county headquarters and for local access and link them to national transportation corridors</li> <li>➤ Expand all roads connecting county headquarters to sub-county headquarters to at least 30m and developed to bitumen standard</li> <li>➤ Develop roads connecting infrastructure installations of national importance and resource areas to bitumen standard</li> </ul>

		<ul style="list-style-type: none"> <li>➤ An efficient and affordable Mass Public Transport for all urban areas in the country shall be developed</li> </ul>	<ul style="list-style-type: none"> <li>➤ Design and develop integrated transport networks that considers all different modes of transport.</li> <li>➤ Establish a comprehensive transport management information system for all transport modes.</li> </ul>
9.	Providing Appropriate Infrastructure	<ul style="list-style-type: none"> <li>➤ Safe, adequate, reliable and affordable electricity for both urban and rural settlements shall be provided</li> </ul>	<ul style="list-style-type: none"> <li>➤ Provide safe connections for all informal settlements in urban areas for safety</li> <li>➤ Mainstream and enforce green energy options in the design of buildings</li> <li>➤ Increase access to electricity through upgrading and expansion of the national power transmission and distribution network</li> <li>➤ Support the flagship projects that are geared towards increasing electricity supply from both renewable and non-renewable sources</li> </ul>
		<ul style="list-style-type: none"> <li>➤ Expansion and improvement of water reticulation systems to facilitate the access to clean, safe, adequate, reliable and affordable water in human settlements shall be promoted</li> </ul>	<ul style="list-style-type: none"> <li>➤ Incorporate water provision in all physical development plans</li> <li>➤ Development of national rainwater harvesting strategy and water storage investment plans for all the villages and urban centres; and revision of building by-laws to require all new development to have rain water harvesting</li> <li>➤ Restore all the water towers</li> <li>➤ Build water kiosks and yard taps, develop water supply pipeline systems and sewers, and a comprehensive mapping of all water supplies systems in the informal settlements</li> </ul>

		<ul style="list-style-type: none"> <li>➤ A globally competitive, accessible and affordable higher education, training and research facilities shall be promoted</li> </ul>	<ul style="list-style-type: none"> <li>➤ All universities and other tertiary institutions to invest in research, technology and innovation</li> <li>➤ Expand access and equity, improve quality and relevance and invest in human resource by enhancing institutionalization of excellence and increasing the level of research funding</li> <li>➤ Restructure higher education institutions to offer courses based on regional endowment to promote competitiveness and regional balance</li> <li>➤ Mainstream ICT in higher education and training to provide online content to increase access</li> <li>➤ Develop and upgrade physical infrastructure in all higher education institutions to increase their capacity</li> <li>➤ Promote the delivery of university education and training system that is internationally competitive</li> </ul>
		<ul style="list-style-type: none"> <li>➤ A network of functional, efficient, safe, accessible and sustainable county health referral infrastructure shall be established</li> </ul>	<ul style="list-style-type: none"> <li>➤ Increase the utilization of services at lower levels of the health services and reduce self-referral to the higher levels of care</li> <li>➤ Improve the system's ability to transfer clients and specimens between the different levels of the health care system</li> <li>➤ Improve reverse referral and feedback information systems</li> <li>➤ Improve preparedness and response to emergencies and disasters</li> <li>➤ Strengthen outreach systems for provision of health services to marginalized and vulnerable population</li> </ul>

		<ul style="list-style-type: none"> <li>➤ Appropriate, quality, efficient and cost-effective ICT infrastructure in both rural and urban areas shall be promoted</li> </ul>	<ul style="list-style-type: none"> <li>➤ Integrate e-youth ICT platforms. The sub-sector will establish a youth portal to enhance information access by the youth</li> <li>➤ Develop and upgrade ICT Infrastructure in the county</li> <li>➤ Mainstream use of ICT in all levels of government and the private sector (e-government)</li> </ul>
		<ul style="list-style-type: none"> <li>➤ The expansion of sewerage systems and waste management facilities shall be promoted to improve sanitation in human settlements</li> </ul>	<ul style="list-style-type: none"> <li>➤ Service all urban settlements by a centralized sewerage treatment system and solid waste disposal facilities</li> <li>➤ Apply appropriate technology solutions to sewerage treatment in rural and low-density housing areas</li> <li>➤ All spatial plans to make provision for development of sewer systems and treatment works and solid waste disposal sites</li> <li>➤ Enactment of laws at National and County levels to incorporate private public partnerships in infrastructure investments</li> <li>➤ Adopt appropriate technology to facilitate reduction, recycle and reuse of waste (3R's)</li> </ul>
		<ul style="list-style-type: none"> <li>➤ Sporting infrastructure shall be planned, developed, maintained and the existing rehabilitated to promote sports development</li> </ul>	<ul style="list-style-type: none"> <li>➤ Establish County Sports Talent Centers to act as feeds to the international centre to scout, nurture and develop sports talents at the sub-national levels</li> <li>➤ Rehabilitate the county stadia to international standards to enable the youth to actively develop and tap the immense talent in sports will be undertaken</li> </ul>

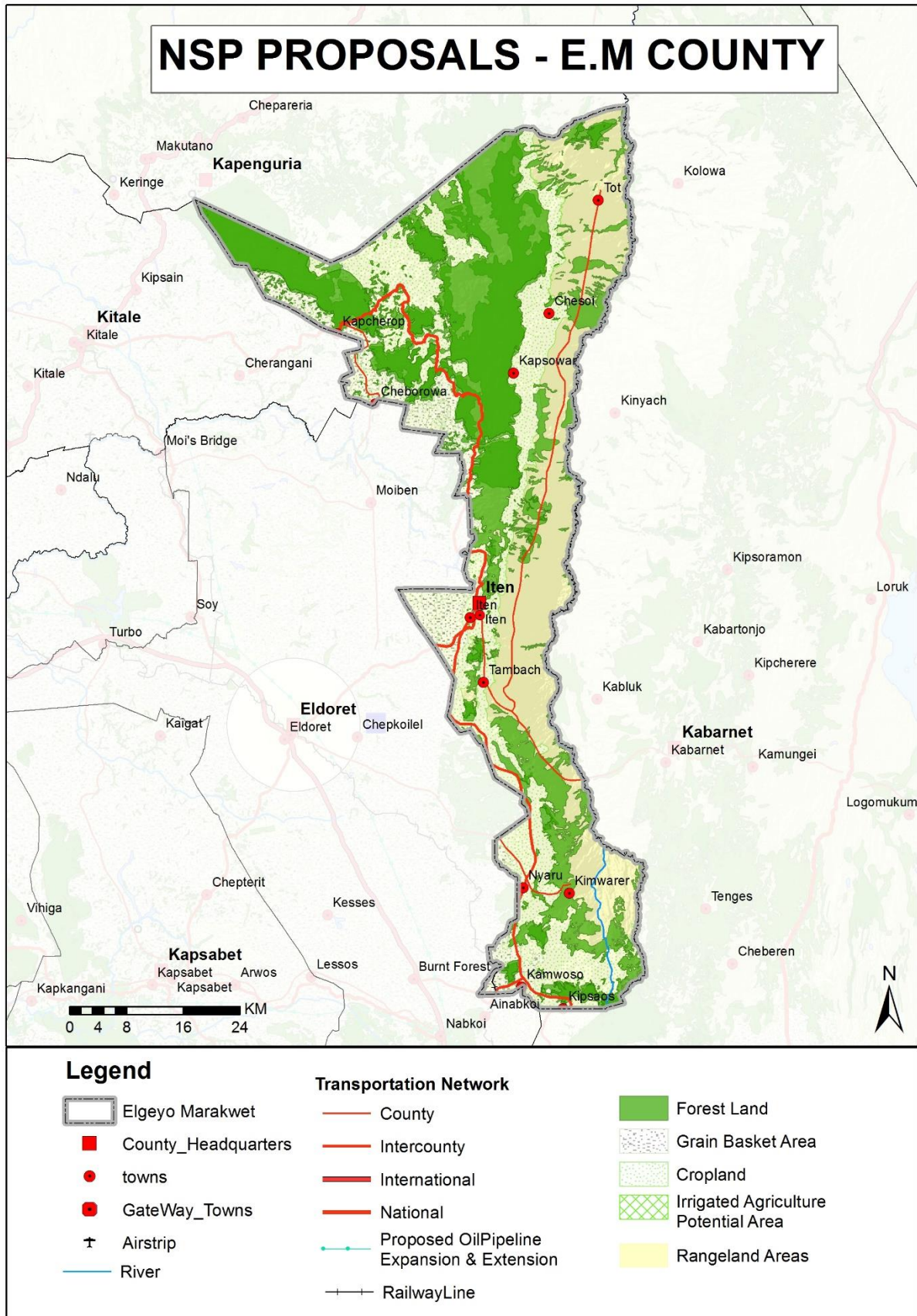
10.	Towards a Rapidly Industrializing County	<ul style="list-style-type: none"> <li>➤ The cluster development strategy shall be promoted to focus on proximity to raw materials and markets of region-specific products</li> </ul>	<ul style="list-style-type: none"> <li>➤ Concentrate urban-based industries</li> <li>➤ Mineral-based industries to be located in-situ where the minerals are found</li> <li>➤ Locate cottage industries and crafts in-situ</li> <li>➤ Concentrate livestock produce industries</li> <li>➤ Promote value addition in processing of local produce</li> </ul>
		<ul style="list-style-type: none"> <li>➤ Specific sites for industrial development shall be identified, planned and serviced with the appropriate infrastructure</li> </ul>	<ul style="list-style-type: none"> <li>➤ Plan and set aside land for industrial development in the county</li> <li>➤ Develop SME and Industrial Parks in the county</li> <li>➤ Integrate the industrialization process and environment conservation</li> <li>➤ Provide an integrated, efficient, reliable and sustainable road transport infrastructure</li> <li>➤ Provide efficient railway network for bulk haulages</li> <li>➤ Provide efficient airport facilities to facilitate quick delivery of produce and perishable products</li> <li>➤ Increase availability of clean water and improve sanitation</li> <li>➤ Discharge of safe/ clean industrial waste into water bodies shall be encouraged</li> </ul>
		<ul style="list-style-type: none"> <li>➤ Adequate and affordable energy supply for the industrial sector shall be provided</li> </ul>	<ul style="list-style-type: none"> <li>➤ Provide reliable energy infrastructure by extending the national grid network</li> <li>➤ Expand, modernize and upgrade electricity generation and supply</li> </ul>

			<ul style="list-style-type: none"><li>➤ Adopt renewable energy generation programmes by provision of incentives and enforcement of building laws requiring utilization of renewable energy</li><li>➤ Incentivize large industries to promote co-generation of power</li><li>➤ Promote the adoption of energy efficient technologies to lower the demand for energy</li></ul>
--	--	--	--

The map below describes the county's development proposals as guided by the NSP.

DRAFT

Map 3: NSP Proposal for Elgeyo Marakwet County



Source: Department of Physical Planning

## 5 IMPLEMENTATION AND ADOPTION OF THE GUIDELINES

### 5.1 Overview

The implementation framework identifies activities and further ties them with responsible actors, resources and timeframes adequate for their execution. It constitutes a deliberately established method, means or system of ensuring that the policies, strategies and measures outlined in the guidelines are continuously and consistently executed to achieve their objectives.

To effectively implement the guidelines, the various sectors, actors and levels of planning have been identified and have to work together and the mandate of the sectors at the National and County levels of planning have to be integrated.

### 5.2 Implementation Approaches

The County Specific Guidelines will be implemented through various approaches including:

1. Preparation of spatial plans to integrate and conform to the proposals of the County Guidelines. The plans include:
  - Inter-County Physical and Land Use Development Plans for Metropolitan regions, conservation zones, river basins, water towers, coastal ecosystems, trans-boundary resource areas and transport corridors, among others.
  - County Physical and Land Use Development Plans.
  - Local Physical and Land Use Development plans for Cities, Urban areas, special area plans, subject plans and detailed neighbourhood plans, among others.
  - Sectoral plans
2. Integration of the guideline policies, strategies and measures into the County sector plans, programs and projects. Ministries, Departments and Agencies (MDAs), County and National Departments identified in the plan to administer the policies, strategies and measures are required to translate them into action plans, programmes and projects and to include them in their subsequent sector plans.
3. Formulation of policies, regulations and standards to guide development control

### 5.3 Implementation Framework

The implementation of the various policies, strategies, measures, programmes and projects under these Guidelines will involve a wide range of actors. It will require a coordinated

approach and partnership between the National and County Governments and non-state actors. It may require re-engineering of institutions and a number of actors to undertake the implementation through a harmonized approach.

The National Spatial Plan identified a multi-leveled framework for implementation of the plan that incorporates all levels of actors. In this regard, the institutions identified in the NSP to undertake implementation of the plan at County-level shall also be mandated to ensure implementation of this Guidelines.

The following are the Institutions mandated to ensure implementation of the County Specific guidelines;

#### 5.3.1 County Physical Planning Committee

The role of the County Planning Committee shall be to ensure aspirations of the guidelines are articulated in preparation of the County Spatial Plans, County Integrated Development Plans and Local Physical and Land Use Development Plans.

The composition of this committee consists of;

- i. The Governor who will be the Chairperson,
- ii. the Deputy Governor,
- iii. the County Executive Committee Members from various sectors
- iv. Directors from various relevant County Departments including Lands and Physical Planning, Economic planning, Agriculture, Industrialization, Tourism, Environment, Transport and Infrastructure

The functions of the committee include;

- 1) To promote effective integration between physical, economic and sectoral planning within the framework of county development policies.
- 2) To provide policy guidance for the implementation of strategic spatial projects
- 3) To ensure that the guidelines policies and measures are mainstreamed in the various county plans.
- 4) To mobilize resource for implementation of the Guidelines.

### 5.3.2 County Planning Unit

The technical Unit shall provide technical support to the various implementing County departments on issues relating to physical planning.

The CPU shall;

- i. Monitor the Implementation of the guidelines.
- ii. To disseminate components of the guidelines to the various county departments.
- iii. Update the County Physical Planning Committee on a regular basis on the implementation of the guidelines.

The County Director of Physical Planning shall be responsible for preparation of an annual state of planning report which shall among other things appraise the status of implementation of the guidelines.

### 5.3.3 National Land Commission

The National Land Commission shall play its oversight role in land use planning to ensure efficient implementation of the NSP and the guidelines. Other functions of the Commission in the implementation of the NSP and the guidelines include the following: - To formulate mechanisms and parameters for monitoring and overseeing land use planning.

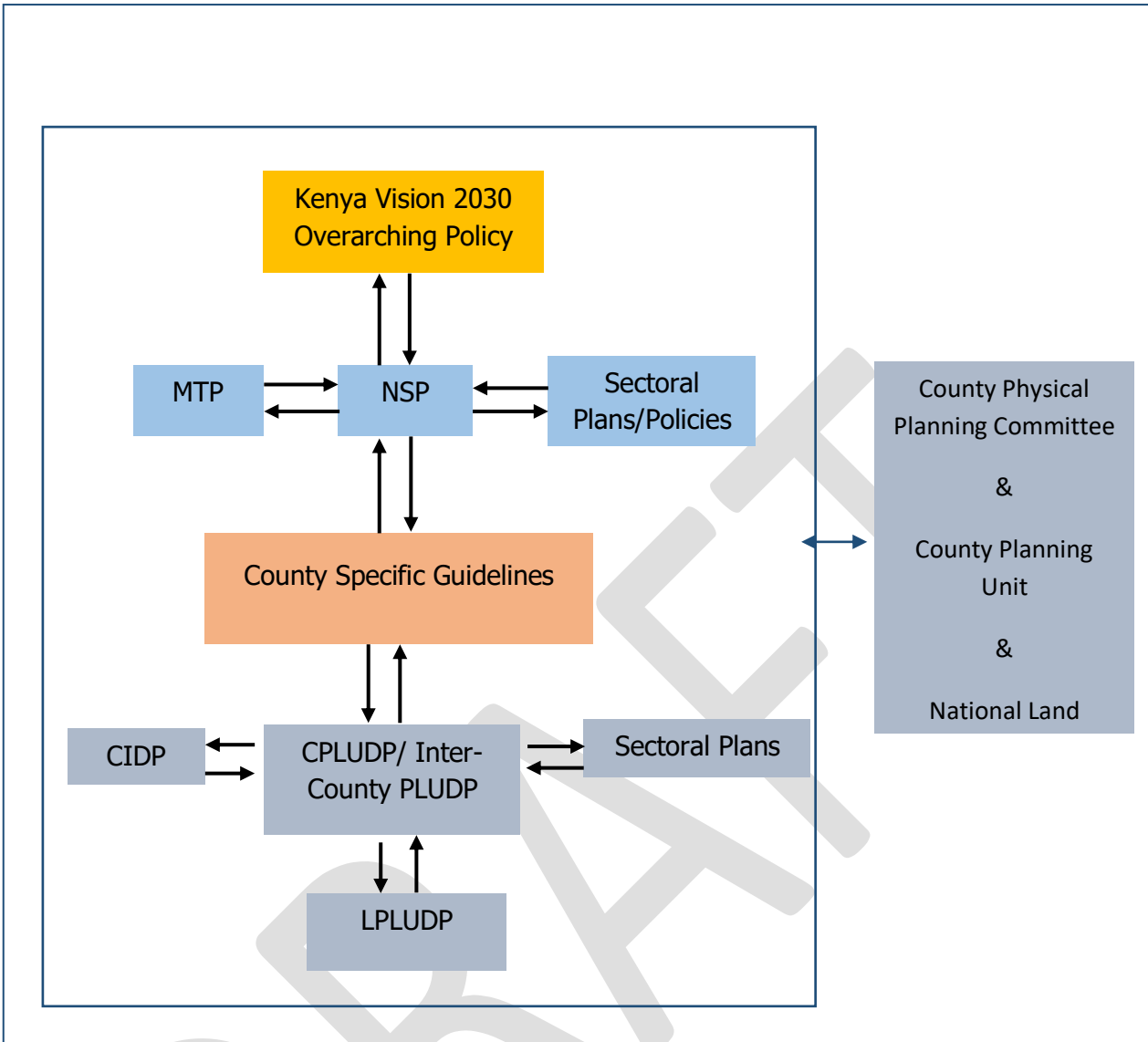
- i. To ensure that relevant planning authorities carry out their functions as required by law.
- ii. To make recommendations for improvements of the planning systems in the county.
- iii. To mobilize resources to support physical/land use planning.

### 5.4 Monitoring and Evaluation

Implementation of the guidelines will be monitored and evaluated to measure both outputs and outcomes and ensure that the intended actions are implemented in a timely manner. To facilitate attainment of the objectives of the guidelines, performance indicators will be developed by the County Physical Planning Department for efficient monitoring. Periodic reports will be prepared in relation to progress being made in their implementation.

The graphic below illustrates the implementation structure for County Specific guidelines.

Figure 4: NSP Implementation Organization Structure



Source: Department of Physical Planning 2022

## 5.5 Conclusion

The application of these guidelines will be undertaken by a number of actors and hence the need for a coordinated approach. The lead agency will be Elgeyo Marakwet County Government which will be responsible for implementing various county specific initiatives proposed by the guidelines.

The National Government, County Government of Elgeyo Marakwet the private sector and the general public will be critical in actualizing the objectives of these guidelines. The County Physical Planning Committee shall develop a communication strategy to enhance the synergies.

The National Department of Physical Planning shall undertake sensitization, training and capacity building of the County Government and National Government institutions and agencies that will be involved in the implementation of these guidelines. Special attention will be given to the County physical planning units, as they will be expected to provide technical expertise in the implementation of the County specific policies and strategies.