



NATIONAL SPATIAL PLAN IMPLEMENTATION GUIDELINES FOR GARISSA COUNTY

Optimal Productivity, Sustainability, Efficiency and Equity in the use of our
Land and Territorial Space



MINISTRY OF LANDS AND PHYSICAL PLANNING
STATE DEPARTMENT FOR PHYSICAL PLANNING

© 2022

Kenya  
VISION 2030

FOREWORD

The Constitution of Kenya apportions responsibility of planning to both National and County Governments. Under the Fourth Schedule on distribution of functions, Part 1 (21) and (32) mandates the National Government with the responsibility of formulating general principles of land planning, co-ordination of planning by the Counties, capacity building and technical assistance to the Counties. On the other hand, Part 2(8) allocates the function of County planning and development to County Governments. It is under these provisions that the County specific guidelines have been prepared.

The Department of Physical Planning prepared the National Spatial Plan (NSP) in response to the Kenya Vision 2030 to guide the spatial development of the country over a period of 30 years beginning in 2015.

It aims at achieving an organized, integrated, sustainable and balanced development of the country by providing a framework for better national organization and linkages between different activities within the national space.

To implement the Plan, the Counties are expected to play a key role by mainstreaming strategies, policies, and measures identified in the NSP into the County spatial planning systems.

The guidelines have identified planning policies, strategies, and measures that Plans at the County level are expected to mainstream and propagate. The policies address among others, the protection of rich agricultural land, development imbalances, conservation of environmentally sensitive areas, urban containment, and promotion of industrial development.

The guidelines provide direction on the existing potentials, the opportunities, the constraints/challenges inhibiting harnessing of the potentials, the strategies to apply, respective policies required, and the necessary measures to achieve optimal productivity, sustainability, efficiency and equity in the use of county land resources.

The guidelines are an opportunity on how best to refocus, vary and complement areas that require different approaches responding to country-specific needs and promote

the livelihoods of their people, while contributing to the national aspirations of vision 2030, regional objectives of the Africa Agenda 2063, and international targets of sustainable development. The refocusing will also be handy in reviewing and making decisions on NSP which is due for review in 2025.

These guidelines are therefore a tool for enhancing this critical path and provide a direction for development planning by the Counties as they discharge their responsibility of preparing county and local physical and land use development plans. The guidelines will also ensure that the County Integrated Development Plans conform to the proposed County specific policy guidelines and measures.

DRAFT

PREFACE

The National Spatial Plan (NSP) recognizes that Kenya is greatly endowed with massive and diverse resources distributed over the national space that require an integrated and coordinated approach for optimal productivity and sustainability.

The County Specific Guidelines have been derived from the National Spatial Plan and provide a planning framework for the integration of the NSP into the county spatial planning system. They are clear statements linking the National Spatial Plan to Inter-County, County and lower-level Physical and Land Use Development Plans and provide clarification on the anticipated sustainable development outcomes of implementing the Plan.

The County Government will adopt, develop and implement their plans based on the policies, strategies, and measures articulated in the guidelines. The realized county plans are expected to guide, harmonize and facilitate development within the county, hence contributing to the overall implementation of the NSP.

The guidelines also form an efficient compass and monitoring tool for National and County Governments to jointly pursue sustainable planning and appropriate implementation mechanisms.

For the county to be nationally competitive, there is need to balance development and promote optimal utilization of land and land-based resources as well as cultivate an integrated approach in addressing the intertwined challenges of regional imbalances/inequalities, rural development, underutilization of the available resources, uncontrolled urbanization, environmental degradation and inefficient transportation. It is imperative therefore, to prioritize the implementation of this strategic document so as to promote balanced development and competitiveness across the county

EXECUTIVE SUMMARY

The County Specific Guidelines seek to facilitate the implementation of the National Spatial Plan by outlining policies, strategies and measures to guide County spatial planning and development and promote optimal productivity, sustainability, efficiency and equity in the use of land. They provide a framework for preparation of lower level Plans including Inter-County, County and Local Physical and Land Use Development Plans.

The disconnect between National and County Spatial Planning and development has resulted in uncoordinated and unbalanced development, therefore creating a need for a clear structure that links National, Regional and Local planning and development. This is achievable through integration of the policies, strategies and measures proposed by the guidelines into County Spatial Plans, Programs and Projects, to tackle challenges of unbalanced regional development, urbanization, national competitiveness and unsustainable use of land and natural resources.

The County Specific Guidelines are organized into five chapters detailing various facets. Chapter one provides an overview, purpose and justification of preparation of the guidelines. It also outlines the objectives that the guidelines intend to achieve and details the preparation process as well as intended users. This chapter highlights the key principles that form the basis for preparation of lower level plans including public participation, liveability, sustainable development, urban containment, smart urban growth among others.

Chapter two details the legal and policy provisions that the guidelines are anchored upon. They include, among others, The Constitution of Kenya, 2010, The Physical and Land Use Planning Act No.13 of 2019, County Government Act, 2012, Environmental Management and Coordination (Amendment) Act, 2015, Sessional Paper No. 01 of 2017 on National Land Use Policy and Sessional Paper No. 10 of 2012 on Kenya Vision 2030.

The third chapter analyses the county profile, detailing its location, size, bio-physical characteristics, socioeconomic status and the County's comparative advantage in relation to others. The locational context provides information on the geographical

position and bordering Counties while the biophysical context discusses the topography, hydrology and climate. The socioeconomic status indicates key economic drivers of the County and its population and demographic structure.

Chapter four presents the County specific issues and proposes development strategies to promote national competitiveness, optimal use of land and resources, rural development, balanced intra-county development and urbanization.

Additionally, it provides policy guidelines and measures for County advancement.

The final chapter five focuses on implementation and adoption of the guidelines. The implementation framework identifies institutions, County development programs and projects, and further ties them with responsible actors, resources and timeframes for effective execution. It proposes a framework for ensuring that the outlined policies, strategies and measures are adequately implemented.

DRAFT

Table of Contents

1	INTRODUCTION	1
1.1	Background	1
1.2	Purpose	1
1.3	Objectives	2
1.4	Scope	2
1.5	Justification	3
1.6	Application of the Guidelines	3
1.7	The Process of preparing the Guidelines	4
1.8	Targeted users	5
1.9	Key Principles	6
2	THE POLICY, LEGAL AND PLANNING FRAMEWORK FOR THE GUIDELINES.....	8
2.1	Constitutional context.....	8
2.2	Policy Context.....	8
2.2.1	Sessional Paper No. 10 of 2012 on Kenya Vision 2030	8
2.2.2	Sessional Paper No. 01 Of 2017 on National Land Use Policy	8
2.3	Legal Context	9
2.3.1	The Physical and Land Use Planning Act, 2019.....	9
2.3.2	County Governments Act, 2012	9
2.3.3	The Urban Areas and Cities (Amendment) Act, 2019	9
2.3.4	Environmental Management and Coordination (Amendment) Act, 2015.....	10
2.3.5	National Land Commission Act, 2012.....	10
2.4	Planning Context.....	10
2.4.1	National Spatial Plan (NSP)	10
2.4.2	NSP linkage to other plans	11
3	COUNTY PROFILE	13
3.1	Overview	13
3.2	Location Context	13
3.3	Bio-physical Context	15
3.4	Socio-economic background.....	15
3.5	County’s Comparative Advantage	18
4	DEVELOPMENT STRATEGIES AND POLICY GUIDELINES FOR GARISSA COUNTY.....	19
4.1	County Specific Issues and Development Strategies	19
4.2	National Spatial Plan Policy Guidelines for Garissa County.....	27
5	IMPLEMENTATION AND ADOPTION OF THE GUIDELINES.....	40
5.1	Overview	40

5.2 Implementation Approaches.....40

5.3 Implementation Framework41

 5.3.1 County Physical Planning Committee.....41

 5.3.2 County Planning Unit (CPU).....42

 5.3.3 National Land Commission42

5.4 Monitoring and Evaluation.....42

5.5 Conclusion.....44

DRAFT

List of Figures

Figure 1: The Scope of the Guidelines	3
Figure 2: Policy Focus of the NSP	11
Figure 3: NSP Linkage to other Plans.....	12
Figure 4: NSP Implementation Organizational Structure.....	43

List of Tables

Table 1: Targeted Users of the Guidelines	5
Table 2: Garissa County Population Projections	15
Table 3: County Specific Issues and Development Strategies.....	20
Table 4: NSP Policy Guidelines and Measures for the County.....	28

List of Maps

Map 1: Location of the County	14
Map 2: The Existing Situation in Garissa County.....	17
Map 3: NSP Proposals for Garissa County	39

DRAFT

1 INTRODUCTION

1.1 Background

The County Guidelines set out policies, strategies and measures that will guide the long-term spatial development of the county for a period of 30 years. They cover the entire county and defines the general trend and direction of its spatial development.

The guidelines have been developed in line with the four thematic areas as outlined in the NSP. They provide a guide to the Planning Authority at the county on how to incorporate the NSP policies, strategies and measures during the preparation of County Spatial Plans and other lower-level plans like the Local Physical and Land Use Development Plans consequently implementing the NSP.

The NSP County Specific implementation guidelines summarize the County's existing potentials and opportunities, the constraints (challenges) inhibiting harnessing of the potentials, the applicable strategies and respective policies required, and the necessary measures to achieve optimal productivity, sustainability, efficiency and equity in the use of the county land resources. They act as a reference point

1.2 Purpose

The purpose of the County Specific Guidelines is to provide a planning framework for mainstreaming of the National Spatial Plan to the County spatial planning system.

The guidelines are intended to assist the County enhance the implementation of the NSP by linking the proposed county specific policies, strategies and measures into the County plans, programs and projects while putting measures in place for achieving them. The guidelines inform preparation of various County Physical Plans such as the County Physical and Land Use Development Plans.

For optimal implementation of these plans, a County Integrated Development Plan (CIDP) is essential since it is a sectoral and budgetary based plan that draws its implementation programs and projects from the County Physical Plans.

1.3 Objectives

The guidelines provide policies and strategies to deal with challenges of regional imbalances/inequalities, rural development, underutilization of the available resources, urbanization, environmental degradation and inefficient transportation.

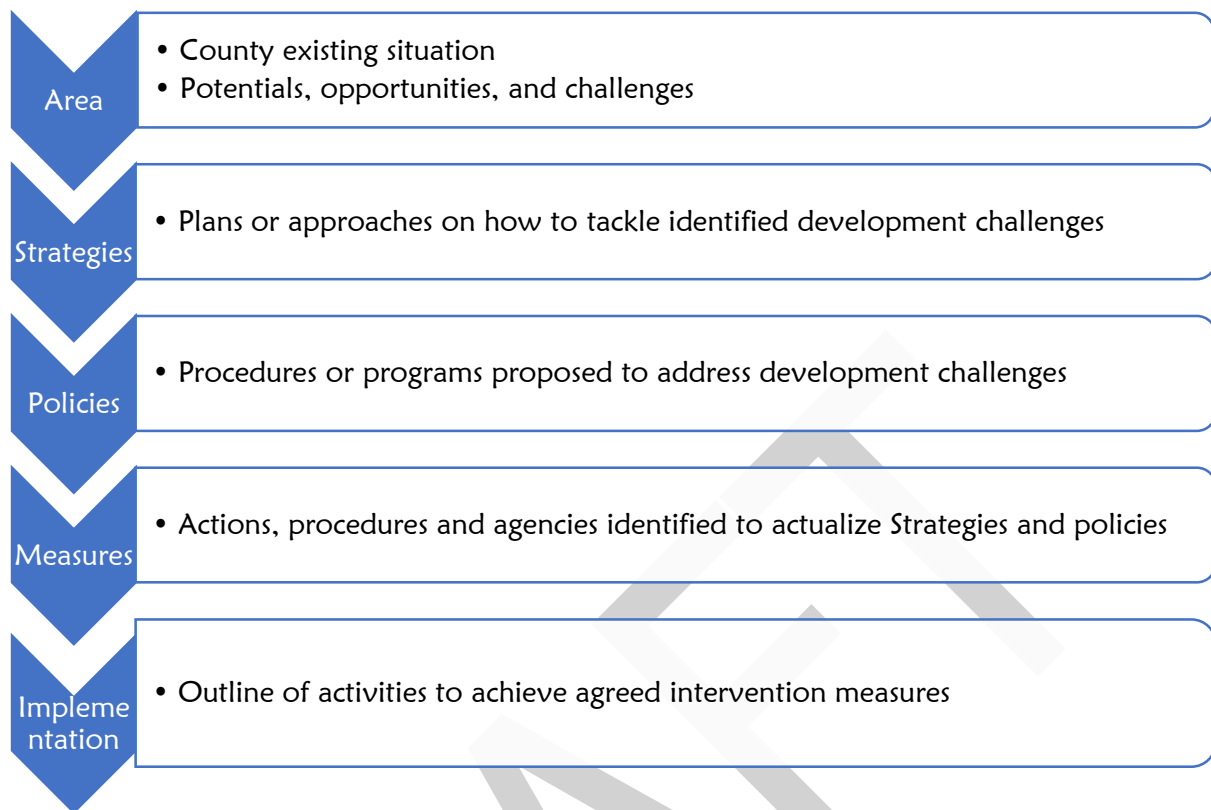
Specifically, the objectives are;

1. To sensitize the County on the provisions of the NSP
2. To promote synergy between National and County planning
3. To guide the County in the implementation of the NSP
4. To clarify the roles of the different actors in the implementation of the NSP.

1.4 Scope

The guidelines and strategies are specific to Garissa County and cover the entire territory of the county measuring approximately 44,736Km². The guidelines highlight key facets which include challenges, actions, approaches, plans and procedures prescribed to address the challenges and outline of activities to execute agreed interventions as captured in the National Spatial Plan as indicated in Figure 1 below. These guidelines shall be operational until the year 2045.

Figure 1: The Scope of the Guidelines



Source: State Department for Physical Planning, 2022

1.5 Justification

The preparation of County Spatial Plans and other lower-level plans which is a mandate of the Counties has been slow and, in some Counties, has not begun at all. These guidelines are therefore a quick reference on how Garissa County can optimize land even in the absence of these plans.

Since the approval and launch of the NSP, its implementation has been undertaken in an uncoordinated manner hence the guidelines will provide standardized approach for all Counties. The guidelines are also an important tool for tracking and evaluating implementation of the NSP both at National and County levels.

1.6 Application of the Guidelines

The guidelines and strategies will be used or applied in the following ways to achieve a more sustained and coordinated development of the County;

- To effectively coordinate planning between the National and the County Government;
- To improve County Government capacity to formulate, coordinate and implement integrated development policies and programs to address spatially unbalanced development;
- To inform strategic infrastructure policy and public investment decisions which support the achievement of balanced development in the County;
- To strengthen County inter-sectoral coordination within a spatial framework and provide the private sector with a clear context in which they can make investment decisions;
- To optimize the use of land and natural resources by providing a framework for making sustainable locational choices for sustainable development and conservation of land productivity in the County.

1.7 The Process of preparing the Guidelines

The process involved reviewing the National Spatial Plan and identifying key issues, spatial policies, development strategies and measures specific to Garissa County. These key issues, spatial policies, development strategies and measures will be realized through preparation of County and other lower-level plans.

Research was undertaken on various thematic areas to enrich the County specific issues and development strategies as well as policy guidelines and measures/interventions. Further, preparation of the guidelines considered the constitutional, policy and legal provisions on physical and land use planning. Expert opinion was sought on the identified issues, policies, measures and strategies for implementation viability.

The preparation of the guidelines was identified as one of the implementation tools of the NSP, in which key NSP issues, policies, strategies and measures were translated into specific action plans, programs and projects at the County level.

1.8 Targeted users

Table 1 below indicates the targeted users of these guidelines and the application for each, among other users.

Table 1: Targeted Users of the Guidelines

User	Application
County Executive Committee Member in charge of Physical and Land Use Planning	<ul style="list-style-type: none"> • Preparation of County and lower-level plans • Linkage of planning structures • Quality control of the various County plans • Formulate County planning policies and strategies • Establish County planning institutions • Coordinate and implement County plans and policies
The County Director of Physical and Land use planning	<ul style="list-style-type: none"> • Advising the County Government on the impact of the county specific guidelines to the County • Preparation of County physical and land use development plans and other lower-level plans • Formulating County physical and land use planning policies, guidelines, strategies, and standards; • Issuance of development permission and other development control instruments under The Physical and Land Use Planning Act, 2019.
Licensed physical and land use planners both in public and private sectors	<ul style="list-style-type: none"> • Prepare, coordinate and implement spatial plans • Quality control of plans and consultancy services • Formulate policies, strategies and development guidelines • Dispute resolution
County assembly	<ul style="list-style-type: none"> • Approval of planning budgets • Vetting of various County plans • Formulation and passing of county planning legislation • Enhance capacity to oversee the executive on spatial planning
Ministries, departments and agencies	<ul style="list-style-type: none"> • Mainstreaming relevant NSP policies, programs and projects • Allocation of resources to priority areas, • Strengthening linkages with spatial planning in resource management
The National Land Commission (NLC)	<ul style="list-style-type: none"> • Oversight role in land use planning to ensure efficient implementation of the NSP • Ensure relevant planning authorities carry out their functions as required by the law
Practitioners in the built environment	<ul style="list-style-type: none"> • Advance of relevant policies, strategies, standards, guidelines, programs, and projects

	<ul style="list-style-type: none"> • Applying processes, procedures and linkages of the NSP in their respective areas of practice
Community, developers and investors	<ul style="list-style-type: none"> • Comprehend the processes, procedures and requirements of various County Plans and Policies • Linkages of spatial planning and implementation • Informed investment decisions
Development partners	<ul style="list-style-type: none"> • Reference frame for funding spatial planning activities • Understand planning linkages and implementation • Informed development decisions
Training institutions	<ul style="list-style-type: none"> • Compliment the curriculum for training of Spatial Planners • Understand the planning procedures and processes

1.9 Key Principles

The principles, as applied in the NSP, should guide and form the basis upon which the lower-level physical and land use plans shall be prepared. Further the principles should ensure sustainable, coordinated, and realistic development. They include the following:

- 1 **Effective Public participation/engagement:** All plans shall be prepared in a participatory and consultative manner with relevant stakeholders and sectoral actors.
- 2 **Urban containment/Compact cities:** Local plans shall strive to limit and control urban growth within the set urban boundaries to protect rich agricultural land, mitigate urban sprawl and reduce cost of infrastructural provision.
- 3 **Livability:** The planning of urban areas shall enhance the liveability index in the area of housing, environment, transportation, health, and social engagement. The urban areas must be economically viable, socially inclusive and ecologically sustainable.
- 4 **Smart and green urban growth:** Plans shall promote sustainable use of energy, creation of green spaces, reduce the need for car travel, and promote use of local materials, support businesses, protection of heritage and creation of unique character.
- 5 **Sustainable development:** Balancing social, economic and environmental dimensions of development and catering for current and future generations.

- 6 **Promotion of ecological integrity:** Plans shall promote the protection and conservation of environmentally sensitive areas.
- 7 **Promote public transportation:** Favour public transportation over private transport to ensure efficiency and functionality of urban places.
- 8 **Balanced development:** Plans to ensure there/ is balanced development in the County to cure inequalities.

DRAFT

2 THE POLICY, LEGAL AND PLANNING FRAMEWORK FOR THE GUIDELINES

2.1 Constitutional context

The formulation of these guidelines took into account the aspirations and principles of the Constitution of Kenya 2010. Article 66 of the Constitution of Kenya 2010 gives the State powers to regulate use of any land and property in the interest of land use planning among others. The Fourth Schedule of the Constitution assigns the National Government the role of capacity building and technical assistance to the Counties. The guidelines are therefore within and in response to the aspirations, values and principles as provided for in the Constitution.

2.2 Policy Context

2.2.1 Sessional Paper No. 10 of 2012 on Kenya Vision 2030

Kenya Vision 2030 is the overarching national development framework which all plans should be aligned to. The preparation of all spatial plans should take cognizance of the aspirations, foundations and development concepts of the vision. The preparation of the first National Spatial Plan is identified in Kenya Vision 2030 as a flagship project and is regarded as one of the foundations for socio-economic transformation. Hence the need for linkage between national planning and county planning which can be achieved through mainstreaming NSPs into CSPs and other lower-level plans by preparing NSP county specific guidelines to implement the NSP at lower levels.

2.2.2 Sessional Paper No. 01 Of 2017 on National Land Use Policy

The policy was formulated to address the various challenges related to land use and ensure efficient, productive and sustainable use of land. The main goal of the policy is to provide legal, administrative, institutional and technological framework for optimal utilization and productivity of land related resources in a sustainable and desirable manner at National, County and community levels.

The policy recommends the preparation of a National Spatial Plan to provide an integrated framework for the development of the country including guidelines for sustainable rural and urban planning management. The policy also provides for the preparation of planning guidelines, policies and standards to be observed by County

Governments and other sectoral agencies within the frameworks of approved physical and land use development plans. These guidelines have been prepared on this basis and they are to be observed by counties in the implementation of the National Spatial Plan.

2.3 Legal Context

Several Acts of Parliament are in place to provide the legal framework for the implementation of the mandate provided for in Article 66 of the Constitution. These include; The Physical and Land Use Planning Act, 2019, The Urban Areas and Cities (Amendment) Act, 2019, County Governments Act No. 17 of 2012, The Land Act No. 06 of 2012, National Land Commission Act No. 05 of 2012 among others. The NSP County specific guidelines are prepared in this context and meet this criterion.

2.3.1 The Physical and Land Use Planning Act, 2019

This is the overarching statute that provides for formulation of both national and county physical and land use planning policies, guidelines and standards. The Act further provides for administration, types, content, process and approval of the various types of Physical and Land Use Development Plans.

2.3.2 County Governments Act, 2012

This statute mandates County Governments to carry out the planning function at the county level. The guidelines enhance the capacity to prepare the various county level plans that meet the recommended quality and standards.

2.3.3 The Urban Areas and Cities (Amendment) Act, 2019

The statute provides for classification of urban areas and cities, their governance and management, and for integrated development planning. The guidelines are a basis for preparation of these lower-level plans.

2.3.4 Environmental Management and Coordination (Amendment) Act, 2015

The Act provides for the establishment of an appropriate legal and institutional framework for the management of the environment as well as guidelines relating to environmental management and prevention or abatement of environmental degradation. The guidelines take cognizance of this Act and will be implemented within the framework.

2.3.5 National Land Commission Act, 2012

The Act mandates the National Land Commission with the management and administration of public land on behalf of the National and County Governments as well as to monitor and oversight physical and land use planning in the country. The guidelines fall within the ambit of this statute and will facilitate their oversight responsibilities.

2.4 Planning Context

2.4.1 National Spatial Plan (NSP)

The National Spatial Plan (NSP) covers the whole country encompassing the forty-seven (47) Counties and the Exclusive Economic Zone. The NSP outlines policies and strategies as indicated in Figure 2 below, geared towards influencing desired future distribution and organization of population and activities outlined in Vision 2030 and sectoral policies and plans. It aims at achieving economic efficiency and balanced development. The various County Spatial Plans should be aligned to the policies outlined in the NSP as demonstrated in Figure 2 below:

Figure 2: Policy Focus of the NSP



Source: National Spatial Plan, 2015-2045

To actualize the NSP a comprehensive implementation strategy has been proposed that embraces a multiplicity of actors including National Government Ministries, Departments and Agencies, County Governments and the National Land Commission. The strategy proposes the establishment of the following institutions as key in the implementation of the Plan; The National Physical Planning Council, the National Technical Committee and the County Physical Planning Committee.

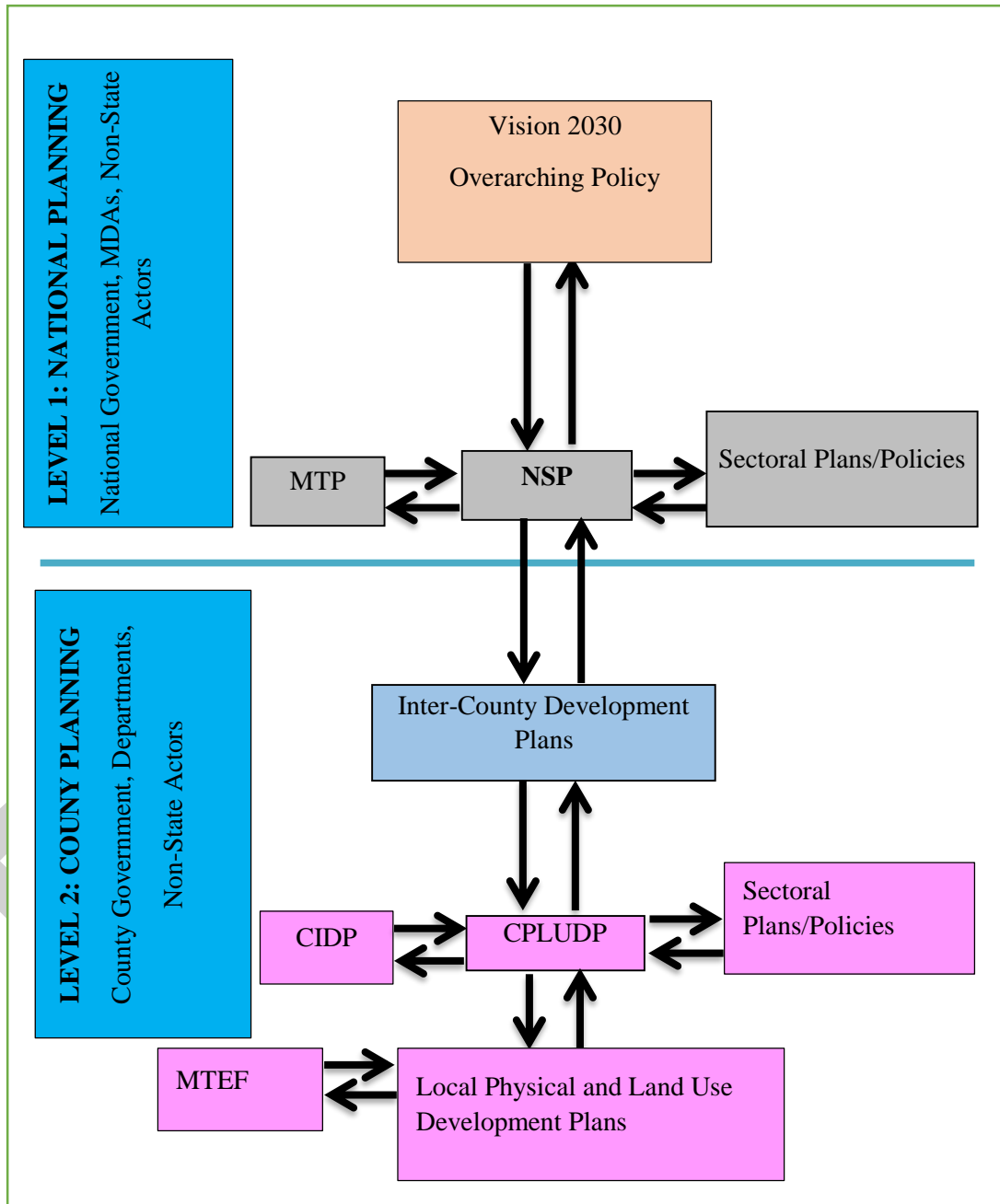
2.4.2 NSP linkage to other plans

The linkage of the National Spatial Plan (NSP) to county and other lower-level plans is key to realization of its aspirations and the successful actualization of these plans. The NSP provides a spatial framework to ground the Vision 2030 flagships projects and form a basis for coordination of County policies, strategies, measures and plans.

Inter County and County plans take into considerations the policies, measures and strategies of the NSP and implements them actualizing its aspirations.

County Physical and Land Use Development Plans provide a framework where the CIDP draws its programs and projects. The implementation of the CIDP in turn leads to realization of the objectives of the County Physical and Land Use Development Plan. The graphic below illustrates the country's planning Linkage.

Figure 3: NSP Linkage to other Plans



Source: The National Spatial Plan, 2015-2045

3 COUNTY PROFILE

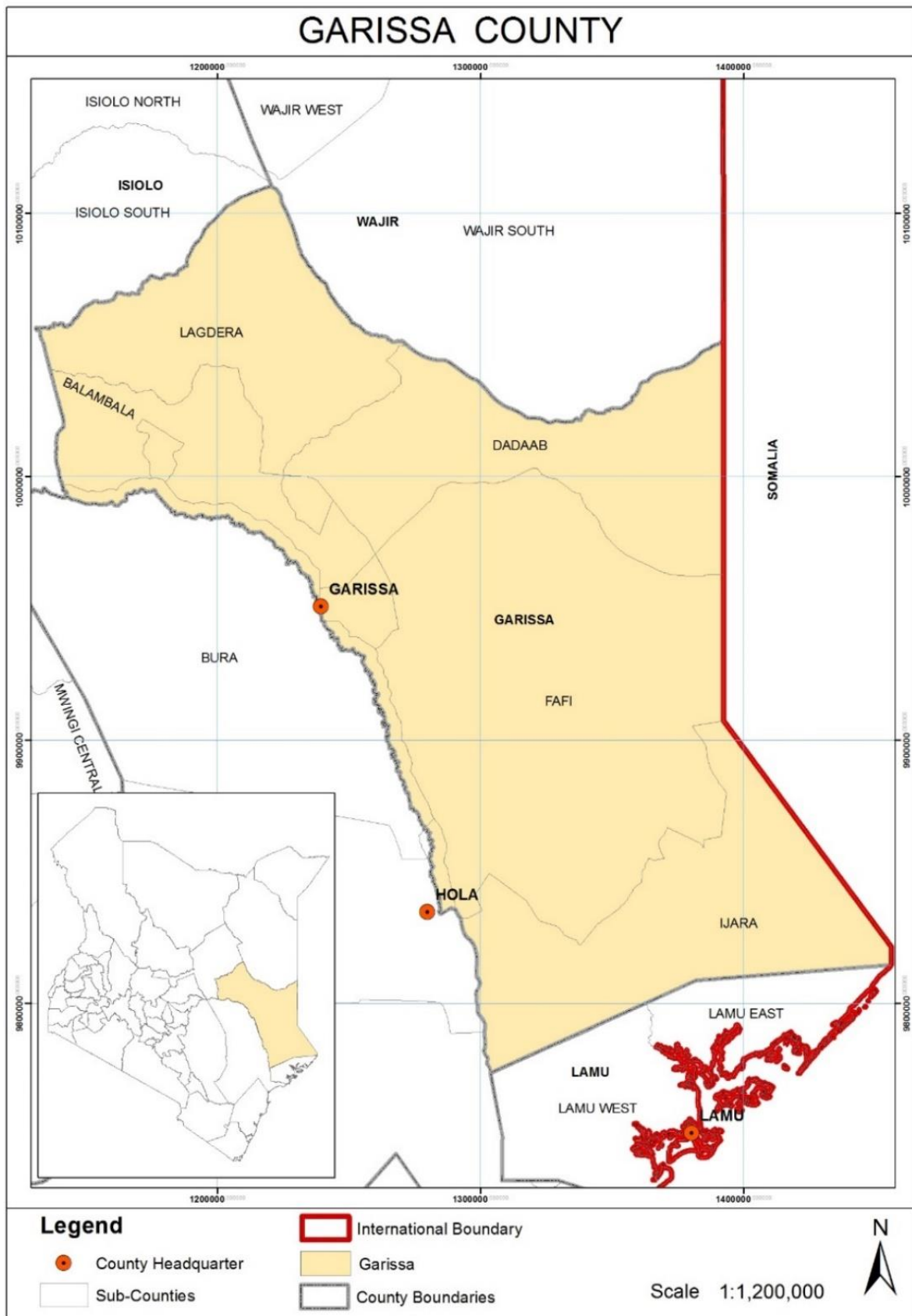
3.1 Overview

This chapter discusses a set of relevant information about Garissa County. It provides information on the location of the County, size, bio-physical features, socioeconomic status and looks at the comparative advantage of Garissa County as compared to other Counties of Kenya.

3.2 Location Context

Garissa County is one of the three counties in the North Eastern region of Kenya. It covers an area of 44,736Km² and lies between latitude 1⁰ 58' N and 2⁰ 1' S and longitude 38⁰ 34'E and 41⁰ 32'E. The county borders the Republic of Somalia to the East, Lamu County to the South, Tana River County to the West, Isiolo County to the North West and Wajir County to the North. Map 1 below shows the location context of the County.

Map 1: Location of the County



Source: State Department for Physical Planning, 2022

3.3 Bio-physical Context

Garissa County is basically flat and low lying without hills, valleys and mountains. It rises from a low altitude of 20m to 400m above sea level. The major physical features are seasonal Lagas (dry river beds) and the Tana River Basin on the western side.

It is a semi-arid area falling within ecological zone V-VI and receives an average rainfall of 275 mm per year. There are two rain seasons; the short rains from October to December and the long rains from March to May. The temperatures are generally high throughout the year and range from 20°C to 39°C with an average of 36°C. The southern parts of the County such as Hulugho, Masalani and Bura receive more rainfall than the northern parts. Balambala and Fafi Constituencies practice rain-fed agriculture on small scale.

3.4 Socio-economic background

Demography: The population of Garissa County was estimated at 841,319 (KNBS 2019) and is projected to rise to 1,004,580 and 1,814,386 in 2025 and 2045 respectively, at a mean inter-censal annual growth rate of 3 percent. The County has a population density of 19 persons per square kilometer. The population projections are as indicated in table 2 below:

Table 2: Garissa County Population Projections

YEAR	2019		2020		2025		2030		2035		2040		2045	
Population size	841,319		866,559		1,004,580		1,164,584		1,350,073		1,565,105		1,814,386	
	<i>M</i>	<i>F</i>	<i>M</i>	<i>F</i>	<i>M</i>	<i>F</i>	<i>M</i>	<i>F</i>	<i>M</i>	<i>F</i>	<i>M</i>	<i>F</i>	<i>M</i>	<i>F</i>
	458,975	383,344	476607	389952	552519	452061	640521	524063	742540	607533	860808	704297	997912	816474
House holds	142596		146874		170268		197387		228826		265272		307523	
Area	44736		44736		44736		44736		44736		44736		44736	
Density	19		19		22		26		30		35		41	

Source: State Department for Physical Planning, 2022

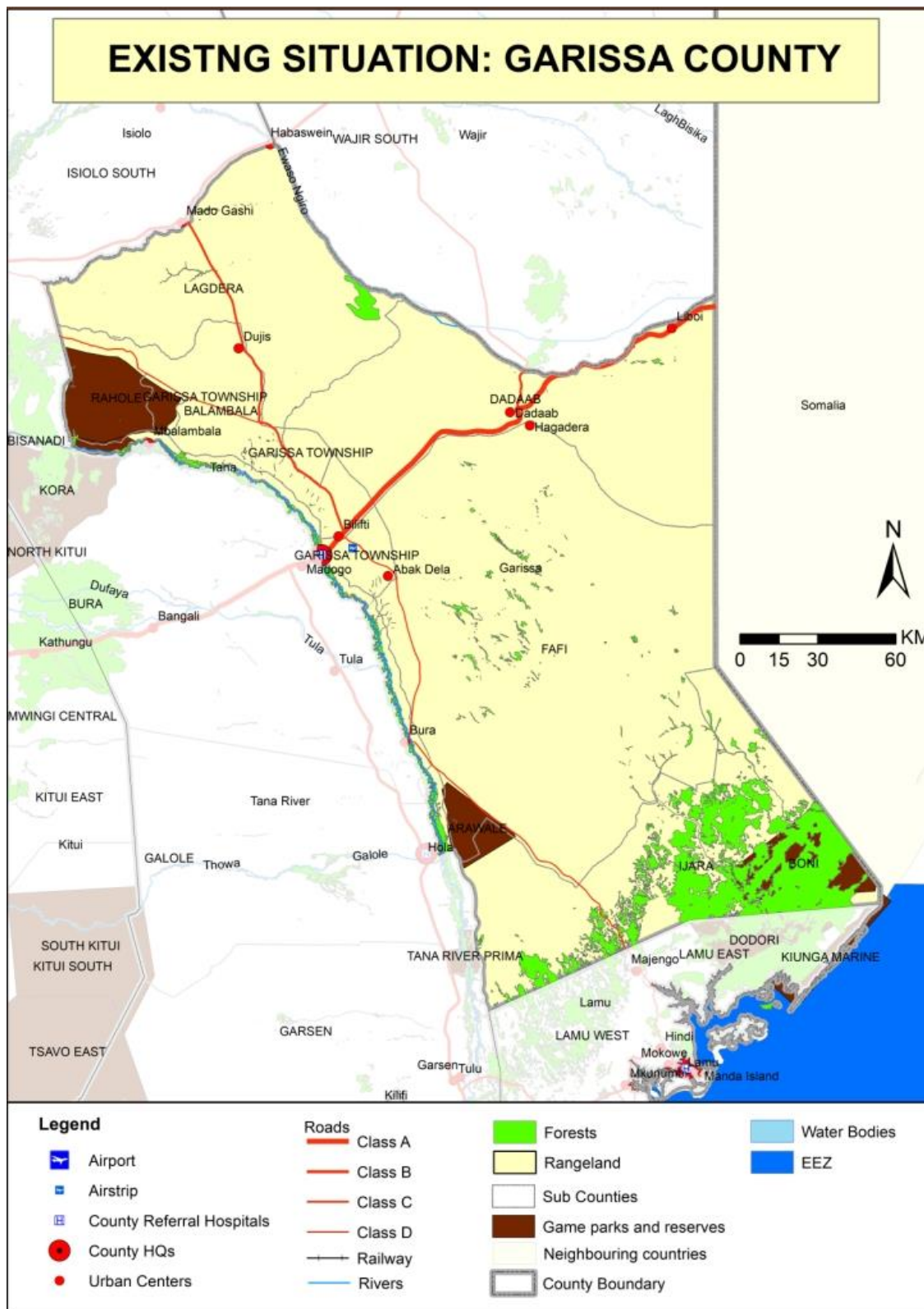
Economic activities: Livestock rearing is the backbone of the county's economy. Rain-fed agriculture is practiced on small scale in the southern parts of the County such as Hulugho, Masalani and Bura, Balambala and Fafi Constituencies. Irrigation is practiced along River Tana. Apiculture is practiced within the county on a moderate scale though has a huge potential that is yet to be fully exploited.

Mining and extraction activities are ongoing within the County. Sand harvesting is done along seasonal rivers/streams known as Lagas. The sand is used for building in the towns. Gypsum deposits exist in the county on small scale.

Infrastructure: The existing infrastructure in the County includes road network, airstrips, energy access, housing, educational facilities, health facilities, communication and technologies such as the post offices, mobile telephone connections, landline telephones, fibre optic cable connection, radio and television.

The existing situation of Garissa County is indicated in Map 2 below:

Map 2: The Existing Situation in Garissa County



Source: State Department for Physical Planning, 2022

3.5 County's Comparative Advantage

a) Agricultural Potential

Garissa County has limited water resources and has irrigation potential along River Tana. The horticultural crops under irrigation include banana, mango, tomato, water melon, onion, pawpaw, and chilies. The County exports fruits and vegetables to other parts of Kenya and neighboring countries; Somalia and Ethiopia.

b) Mining Activities

Mineral and Oil potential such as gypsum, gravel, sand and unexploited oil potential exist in the county.

c) Existence of airstrips

There exist eight airstrips located in the county with Garissa, Lagdera, Hulugho, Fafi, Balambala and Ijara having one each while Dadaab has two. These airstrips when upgraded and well maintained will spur regional economic development.

d) Lamu Port South Sudan and Ethiopia Transport Corridor

There is an ongoing construction of 580km tarmacked road from Lamu to Isiolo via Garissa. The road will traverse Ijara, Fafi, Balambala and Lagdera sub counties. The completion of this project together with the proposed 5km economic corridor on either side of the road will promote regional socioeconomic development in the county.

e) Solar Energy

The National Government, through Rural Electrification Authority installed a 50 Mega Watts solar power plant in Garissa County.

f) Gateway town

Garissa is one of the gateway towns that form a special cluster of urban centres in Kenya. The basic infrastructure and services need to be enhanced to increase its competitiveness.

4 DEVELOPMENT STRATEGIES AND POLICY GUIDELINES FOR GARISSA COUNTY

4.1 County Specific Issues and Development Strategies

The National Spatial Plan provides strategies for spatial growth and development across the country. The strategies are aimed at providing a spatial expression to Kenya Vision 2030 and other sector policies.

This section seeks to provide strategies for spatial growth and development of the County by addressing the factors that prevent the County from achieving the intended goals and objectives. The development strategies discussed are aimed at managing the global impacts, optimizing use of natural resources, creating a County balance and transforming rural areas.

The following are detailed NSP County-Specific issues and development strategies that apply to Garissa County

Table 3: County Specific Issues and Development Strategies

Strategy 1: Enhancing Regional Competitiveness		
Opportunities	Constraints	Strategies
<ul style="list-style-type: none"> ✓ Existence of Open market/town (i. e. Liboi) for cross border trade with Somalia ✓ Blue economy – Presence of River Tana, 20km stretch the Indian Ocean ✓ There is oil potential in Modogashe sub-county ✓ Presence of airstrips to reap on tourism, trade and investments within the region 	<ul style="list-style-type: none"> ✓ Insecurity along the border (international and local) ✓ Unexploited resource potentials ✓ Underutilization of the airstrips 	<ul style="list-style-type: none"> ✓ Promotion of peace, security and preventing violence extremism values and governance ✓ Encourage locations of resource-based industries in areas with resource potential ✓ Harness the renewable green energy sources to increase the energy capacity and reduce the cost of production and improve quality of goods ✓ Strengthen the tourism service industries to leverage on comparative advantages ✓ Encourage the emergence of ICT and research-oriented institutions in the county ✓ Encourage the location of TVETS in the County to enhance training of the youth in order to equip them with technical skills ✓ Improve and expand the existing airstrips ✓ Enforce development control measures within and around airstrips

Strategy 2: Optimizing Land and Natural Resources		
Opportunities	Constraints	Strategies
Land and Land Use		
<ul style="list-style-type: none"> ✓ Availability of vast bare land ✓ Abundant resources e.g., wildlife, minerals 	<ul style="list-style-type: none"> ✓ Effects of climate change resulting into harsh climatic conditions ✓ Natural disasters e.g., droughts ✓ Water scarcity ✓ Underutilization of rangeland resource 	<ul style="list-style-type: none"> ✓ Formulate policies to tap the capability and potentials of the county and to leverage on the economies of pastoralism ✓ Enhance climate change adaptation and desertification mitigation through promotion of climate change resilience projects
Agriculture (Agro climatic zones IV, V and VI)		
<ul style="list-style-type: none"> ✓ Potential for large scale livestock farming ✓ High potential for irrigation agriculture ✓ Potential for fish farming- Presence of River Tana 	<ul style="list-style-type: none"> ✓ Overstocking ✓ Over reliance on River Tana ✓ Lack of irrigation agriculture support infrastructure ✓ Frequent droughts ✓ Lack of adequate equipment and technology to tap fishing potential. ✓ Poor agricultural support infrastructure i.e., roads and markets 	<ul style="list-style-type: none"> ✓ Establish land carrying capacity for livestock ✓ Encourage community ranching to replace pastoralism ✓ Exploit underground water potential, rain water harvesting and harness the existing surface water ✓ Develop large-scale irrigation projects away from the River Tana (Lorian Swamp/Qone plains in Modogashe, Gababa and Abalatiro in Ijara, Rahole in Balambala, and Dagega in Fafi) for production of food and commercial crops ✓ Expansion of agriculture through harnessing of the Lagas ✓ Encourage dry land farming methods and plant drought resistant crops ✓ Provides subsidies on fishing equipment and undertake research on best fishing practices ✓ Transportation infrastructure in agricultural areas should be improved
Blue Economy		
<ul style="list-style-type: none"> ✓ The County has a 20 km stretch of the Indian Ocean as part of her marine catchment area 	<ul style="list-style-type: none"> ✓ Lack of requisite equipment and technology to tap the blue economy potential 	<ul style="list-style-type: none"> ✓ Invest in blue economy research and development ✓ Invest in appropriate technology and infrastructure

✓ Presence of River Tana		
Environment (Conservation Area & Protection Area)		
<ul style="list-style-type: none"> ✓ Large scale livestock production ✓ Existence of natural forests e.g., Boni Forest in Ijara sub-county, riverine and dry woodlands ✓ Abundant renewable energy (Solar/wind/Bio-mass) 	<ul style="list-style-type: none"> ✓ Soil erosion caused by overstocking ✓ Inadequate returns from livestock keeping ✓ Desertification ✓ Degradation of forests ✓ Human wildlife conflict due to limited resources available 	<ul style="list-style-type: none"> ✓ Strict soil erosion control measures ✓ Commercialization of livestock keeping ✓ Provide requisite livestock infrastructure e.g. abattoirs, markets ✓ Encourage and adopt modern ranching methods ✓ Sensitize the public in matters of carrying capacity ✓ Rehabilitation of degraded sites through increasing forest cover ✓ Facilitate management, conservation & utilization of forest & forestry resource products ✓ Conservation and protection of environmentally fragile/ sensitive areas
Natural resources		
<ul style="list-style-type: none"> ✓ Potential for renewable energy (solar/wind/bio-mass) ✓ Ground water potential 	<ul style="list-style-type: none"> ✓ Inadequate technology and exploitation infrastructure ✓ High costs of exploiting available natural resources ✓ Untapped ground water 	<ul style="list-style-type: none"> ✓ Optimal utilization of the available resource potential ✓ Invest in appropriate technology and infrastructure ✓ Undertake further exploration of the available natural resources ✓ Optimize the use of underground water for irrigation and domestic consumption
Industrial		
<ul style="list-style-type: none"> ✓ High potential for a number of mineral deposits e.g., gypsum, sand, gravels, limestone and marbles ✓ Large scale livestock production 	<ul style="list-style-type: none"> ✓ Lack of information on potential mining opportunities ✓ Inadequate technology and exploration infrastructure ✓ Lack of established value chains 	<ul style="list-style-type: none"> ✓ Need for carrying out geological surveys to establish true quantity of mineral deposits ✓ Formulate a policy that creates an enabling environment to attract investments in mineral exploration ✓ Invest in appropriate technology and infrastructure; ✓ Provide appropriate technology to enhance value addition ✓ Promote the formation of cooperatives and Saccos to advance marketing ✓ Promote assertive marketing campaigns for products both domestically and internationally

Tourism (Northern Circuit)		
<ul style="list-style-type: none"> ✓ Diverse cultural heritage ✓ Presence of Bur-Algy Giraffe Sanctuary, south of Garissa town 	<ul style="list-style-type: none"> ✓ Human wildlife Conflict ✓ Underexploited tourism potential ✓ Poor/inadequate transport and infrastructural facilities ✓ Limited safety and security measures ✓ Poor marketing strategies to promote tourism ✓ Weak integration of ICT in the development and management of the tourism value chain ✓ Underdeveloped tourism sites and products ✓ Destruction of wildlife habitat through encroachment and climate change 	<ul style="list-style-type: none"> ✓ Identify, map and develop the tourism potential areas within the County as part of the Northern Circuit ✓ Provide appropriate infrastructure to link the County to other circuits ✓ Enhance security in tourism potential areas ✓ Promote domestic tourism in the County by providing incentives and subsidies ✓ Invest in ICT infrastructure and capitalize on online marketing ✓ Open up under-utilized sites ✓ Strict enforcement of the existing regulations for safeguarding of protected areas (tourism sites).
Transport		
<ul style="list-style-type: none"> ✓ Ongoing construction of the LAPSSET infrastructure corridor and the proposed economic corridor ✓ Rapid urbanization ✓ Increased trade and investments ✓ Opening up of the undeveloped areas ✓ Availability of livestock products to be transported to the markets ✓ Existence of eight airstrips located in Garissa County with Garissa, Lagdera, 	<ul style="list-style-type: none"> ✓ Missing transportation links ✓ Poor condition of roads ✓ Lack of Non-Motorized and Intermediate Means of Transport (NMIMT) ✓ Lack of integration of the transport system ✓ Underutilization of the existing airstrips 	<ul style="list-style-type: none"> ✓ Partnering with the relevant authorities in the construction of the Lamu-Garissa-Isiolo-Lokichar Road, a component of the Lamu Port and LAPSSET Corridor project ✓ Create linkages to agricultural, tourist and urban areas ✓ Connect all the sub-county headquarters with proper transportation system ✓ Preserve and secure adequate land for future transport and other related infrastructural development ✓ Formulate regulations and guidelines to control development along transport corridors ✓ Incorporate Bus Rapid Transit within Garissa and the other urban areas ✓ Improve and expand the existing airstrips ✓ Enforce development control measures within and around airstrips

Hulugho, Fafi, Balambala and Ijara having one each while Dadaab has two		
Public Utilities		
Water and Sanitation		
<ul style="list-style-type: none"> ✓ Surface (River Tana) and ground water potential ✓ Financial and technical support from the government and non-governmental organizations in provision of water and sanitation facilities 	<ul style="list-style-type: none"> ✓ Inadequate information on ground water potential and high cost of exploration ✓ Inadequate accessibility to portable water points 	<ul style="list-style-type: none"> ✓ Exploit underground water to increase water supply ✓ Expansion of existing water supplies in the County ✓ Investments in water harvesting technologies and storage facilities
Solid waste management		
Existing solid waste management facilities	<ul style="list-style-type: none"> ✓ High rate of urbanization thus high solid waste generation ✓ Inadequate solid waste management facilities 	<ul style="list-style-type: none"> ✓ Provide solid waste management facilities in the principal town, other urban centers and in the rural areas. ✓ Promote re-use and recycling guidelines ✓ Encourage public private partnerships investment ✓ Explore other modes of solid waste management such as recycling of waste materials and waste-energy facilities
Energy		
<ul style="list-style-type: none"> ✓ Potential for exploitation of green energy (solar/wind/bio-mass) ✓ Existing demand for green energy 	<ul style="list-style-type: none"> ✓ Inadequate technology and infrastructure for exploitation of green energy ✓ High initial costs for harnessing renewable energy ✓ Lack of proper assessment and research 	<ul style="list-style-type: none"> ✓ Develop infrastructure for harnessing, transmitting and distributing renewable energy ✓ Encourage Private Public Partnerships in energy production ✓ Invest in green energy research and development ✓ Implement Energy efficient systems and energy demand management systems to ensure efficient and productive use of energy. ✓ Expand and upgrade the electricity supply infrastructure

	✓ Inadequate coverage of the existing power supply network	
ICT		
<ul style="list-style-type: none"> ✓ Laying of fiber optic network by National Optic Fibre Backbone Infrastructure (NOFBI) ✓ High demand for internet services ✓ Increased demand in technological services 	<ul style="list-style-type: none"> ✓ Disparity in access to internet services 	<ul style="list-style-type: none"> ✓ Expand the fiber optic network to all urban areas to increase the coverage and data connectivity and increase access for rural population ✓ Mainstream ICT in all sectors to promote service delivery

Strategy 3: Promoting Balanced Regional Development		
Opportunities	Constraints	Strategies
<ul style="list-style-type: none"> ✓ Resource endowment – natural forests, minerals, rivers, green energy sources ✓ Rangelands – The County has high potential for large scale livestock farming ✓ Devolution leading to decentralization of services 	<ul style="list-style-type: none"> ✓ Inadequate industrial establishments ✓ Inadequate provision and access to infrastructural facilities and services ✓ Under-exploitation of the mineral deposits ✓ Underexploited tourism potential ✓ Food and nutrition insecurity ✓ Insecurity 	<ul style="list-style-type: none"> ✓ Promote industrialization and value addition through provision of adequate require infrastructure ✓ Encourage equitable exploitation and sound management of mineral resources while ensuring local participation for improved economic development ✓ Promote investment in sustainable tourism including eco-tourism ✓ Promote Irrigation activities for improved productivity in quantity and quality of yield within the potential regions ✓ Establish and strengthen cross-border peace structures

Strategy 4: Promoting Rural Development		
Opportunities	Constraints	Strategies
<ul style="list-style-type: none"> ✓ Endowment of resources e.g., minerals, tourism 	<ul style="list-style-type: none"> ✓ Weak rural-urban linkages 	<ul style="list-style-type: none"> ✓ Develop appropriate transport and infrastructural facilities and services to support the exploitation of the natural resources in

<ul style="list-style-type: none"> ✓ Commercial livestock production ✓ Development of LAPSSET corridor 	<ul style="list-style-type: none"> ✓ Poor transport and connectivity ✓ Under exploitation of resources ✓ Inefficient and dilapidated infrastructure facilities and services ✓ Slow adoption of technology and innovation ✓ Low productivity 	<p>the area as well as the opportunities they present to spur economic development</p> <ul style="list-style-type: none"> ✓ Promote rural industrialization which includes, rural tourism, mining and agro-based industries ✓ Promote commercial and large-scale livestock production practices in the weak and transitional cluster of rural areas through provision of education and training by the established institutions, adoption of modern technology, provision of extension services and incentives to the farmers ✓ Enhance the ASALs climate change adaptation and desertification mitigation ✓ Promote sustainable land uses that are capable of meeting the rangeland needs and guaranteeing secure livelihoods, economic and social growth
Strategy 5: Urbanization		
Opportunities	Constraints	Strategies
<ul style="list-style-type: none"> ✓ Presence of Liboi as a border town to promote regional integration and cross border trade ✓ Proposed transport corridor (LAPPSET) that is envisaged to spur growth of urban centers in the County 	<ul style="list-style-type: none"> ✓ High rate of urbanization leading urban sprawl ✓ Proliferation of slums and informal settlements ✓ Dispersal of urban centers hindering the area not to positively benefit from urbanization ✓ Ribbon development ✓ Weak urban-rural linkages ✓ Inefficient solid waste management services 	<ul style="list-style-type: none"> ✓ Promote the development of centers as per their potential and population as local, market, rural, urban centers and growth centers ✓ Strengthen land management systems ✓ Provide alternative areas for development of urban centers by provision of services and infrastructure closer to the rural areas ✓ Create an enabling environment for commercial and industrial developers to activate potential development within the urban areas ✓ Strengthen urban-rural linkages through provision of integrated transportation and communication system to reduce the rate of urbanization and improve the rural economy ✓ Promote best solid waste management practices

4.2 National Spatial Plan Policy Guidelines for Garissa County

The National Spatial Plan has stipulated policies to provide a foundation upon which to anchor the strategies enumerated therein. The primary aim is to inculcate discipline in the use of land and natural resources of the country thus stemming duplication and wastage of the resources.

This section seeks to provide the spatial policy guidelines and measures aimed at promoting the achievements of the objectives of the National Spatial Plan using its guidelines. These policies are supported by a wide range of measures which spell out the specific actions to be undertaken to actualize the policy intentions. The policies shall be implemented by the County Government's agencies responsible for land use planning and development control as well as the authorities responsible for land administration.

The following are the policies and measures specific to Garissa County

Table 4: NSP Policy Guidelines and Measures for the County

No	Thematic Area	Policy Guidelines	Measures
1)	Resource Potential Growth region	Garissa to be developed based on its large-scale livestock production potential	<ul style="list-style-type: none"> • Infrastructure provision to support value addition initiatives • Development of small and medium urban centers • Rural development through provision of infrastructure, agricultural sector development and related economic activities • Development and rehabilitation of key infrastructure in underserved locations • Environmental protection • Conservation of wildlife and forest resources • Conservation of the underground water resources • Development of tourism infrastructure • Mineral mapping and exploitation
2)	County Spatial Structure	<ul style="list-style-type: none"> • Utilise the National Spatial Plan (NSP) as the guiding framework to achieve integrated and sustainable spatial development • NSP as a basis for preparation of lower tier physical and land use development plans 	<ul style="list-style-type: none"> • Align Spatial/Physical Plans to conform to the objectives and policies of the NSP • 5-year review of medium term Physical and Land Use Plans shall take into account provisions of the NSP • Sectoral policies to take cognizance of objectives and policies of NSP • Provide planning authorities with adequate human, financial and technical resources
3)	Enhancing National Competitiveness	The selective concentration concept shall be adopted for the planning and location of urban based economic activities in the County to leverage on national competitiveness	<ul style="list-style-type: none"> • Concentrate urban based economic activities in selected urban areas to spur economic development and to exploit the natural resource endowments • Prioritization in the preparation of Physical and Land Use Development Plans to guide development in the selected County growth areas

		<p>The major urban areas shall be planned and provided with appropriate infrastructure to enhance efficiency and quality of life</p>	<ul style="list-style-type: none"> • Enhance the Livability Index for urban areas by providing quality and affordable housing, efficient public transportation, improving neighborhood characteristics, conserve and improve the quality of the environment, quality healthcare, create job opportunities, and promote civic and social engagement • Develop the LAPSSET corridor to spur economic development • Ensure good connectivity with the proposed LAPSSET corridor • Enhance road coverage and connectivity to cover the whole County • Improve the road infrastructure by providing for modal split, linkages and interchanges • Provide appropriate trunk infrastructure in the form of reliable energy, water, sanitation and ICT
		<p>Land and natural resources shall be utilized optimally and sustainably</p>	<ul style="list-style-type: none"> • Encourage the transformation from traditional farming and livestock keeping methods to modern practices • Explore and exploit the mineral, energy and water potentials • Provide transportation networks and other infrastructure necessary to support exploitation of land and other natural resources • Support development of secondary urban centers to catalyze development
4)	Modernizing Agriculture	<p>Rangelands shall be developed and used optimally for large scale commercial production of livestock to support downstream processing of livestock products and promote balanced regional development</p>	<ul style="list-style-type: none"> • Prepare a County Spatial Plan to guide and promote the development of large-scale livestock production • Prioritize provision of requisite infrastructure (water pans, dams, cold storage facilities and laboratories) to support ranching • Modernize livestock keeping through appropriate animal husbandry (high-yielding breeds, extension services and research and disease control), product processing and timely marketing • Appropriate rangelands management practices shall be adopted including observance of carrying capacity, conservation of the natural vegetation and adaptation and mitigation against climate change and its impacts

			<ul style="list-style-type: none"> • Early warning systems, prompt response and recovery systems shall be taken to cushion the county and make it more resilient to the perennial drought cycles
5)	Diversifying Tourism (Northern circuit)	Promote diversification of tourism by offering diverse products in the northern tourist circuit	Tourism in the County shall be planned and developed to offer; safari and wildlife, cultural and heritage, archeological and historical, filming ecotourism and adventure tourism products
		Appropriate Tourism support infrastructure and facilities shall be provided	<ul style="list-style-type: none"> • Carry out an inventory of tourism infrastructure and facilities in the county • Formulate county planning regulations and standards to guide tourist specific infrastructure and facilities • Develop the requisite tourism support infrastructure and facilities • Upgrade the existing tourism facilities and Infrastructure • Provide and upgrade the ICT infrastructure to support tourism • Expand and upgrade the existing airstrips
		Tourist attraction areas and sites shall be conserved and protected	<ul style="list-style-type: none"> • Identify, map and protect all wildlife migratory corridors • Prohibit the location of incompatible land use activities • Strictly regulate developments within the tourist attraction sites • Protect wildlife watering points
		Governance of the tourism sector shall be enhanced	<ul style="list-style-type: none"> • Identify, map and develop the tourism potential within the county as part of the northern circuit • Prepare and implement Sectoral Policies on land use, wildlife and tourism • Strengthen security within the county • Identify and map potential eco-tourism development sites, cultural heritage sites • Undertake awareness campaigns on the value of eco-tourism to the industry players both locally and globally • Develop standards for eco-tourism establishments • Facilitate access to eco-tourism development incentives
6)		Alternative urban areas shall be developed and supported to	<ul style="list-style-type: none"> • Develop Garissa town as a principal town in accordance to its potentials .

	Managing Human Settlements	promote balanced regional development and spur growth	<ul style="list-style-type: none"> • Develop urban centers as intermediate centers between the principal and rural towns • Prepare local physical and land use development plans to define the urban growth limits for the principal town and other urban centers • Provide the principal town and other urban centers with the requisite infrastructure to support their growth and development • Establish an efficient mass transit public transportation system for the principal town • Improve the road conditions and expand the linkages to human settlements • Integrate NMT with existing transport infrastructure
		Develop human settlements in line with environmental and natural resources conservation to improve living conditions	<ul style="list-style-type: none"> • Map out and prohibit settlement in environmental sensitive areas • Plan and provide an integrated waste management system • Prepare and implement zoning guidelines to ensure compatibility of land uses in human settlement areas • Promote social organization and environmental awareness through the participation of local communities in the identification of public service needs • Strengthen the capacity of the local governing bodies to effectively deal with environmental challenges associated with rapid and sound urban growth • Empower community groups, nongovernmental organizations and individuals to assume responsibility and authority for managing and enhancing their environment • Deliberately provide adequate and functional open spaces in urban places
		Improve the management and governance of human settlements particularly in the urban centers	<ul style="list-style-type: none"> • Build institutional capacities of the urban areas management boards • Integrate technology in management of human settlements to strengthen urban data systems • Coordinate and strengthen development control mechanisms

			<ul style="list-style-type: none"> • Provide adequate human resource and improve their capacity in management of human settlements in the sectors of; housing, settlement, land, infrastructure, construction, energy and disaster management • Conduct research into migration trends to inform effective planning and provision of human settlements • Enable public private partnerships in the provision of housing
		Upgrading of the existing settlements and forestalling of new informal settlements	<ul style="list-style-type: none"> • Encourage redistribution of urban income through integrated development planning encompassing social, economic and physical factors • Ease the process of issuance of ownership documents to the legal owners in order to encourage formal developments • Enforce development control regulations and adherence to building code and standards
		Manage and control peri-urban development to contain urban growth within its limits and protect rural land uses	Create green belt buffer zones to define the urban and peri-urban areas
7)	Conserving the Natural Environment (ASALs)	All environmentally fragile areas shall be conserved and utilized in a sustainable manner	<ul style="list-style-type: none"> • Develop and implement an Integrated Land Use (Development) Plan for the County. • Promote integrated natural resource management • Ensure application of Integrated Water Resources Management (IWRM) • Promote efficient adaptation measures for productive and sustainable resource management • Involve and empower communities in the management of ecosystems and promote environmental education and awareness

			<ul style="list-style-type: none"> • Gazette and manage emergency drought reserve areas and encourage the development of buffer areas of crop and forage production as part of contingency planning • Mainstream climate foresight and climate adaptation into planning at all levels by strengthening the climate resilience of communities and promoting sustainable livelihoods • Explore opportunities and develop appropriate mechanisms through which communities can benefit from bio-carbon initiatives • Protect and increase forest cover (i.e., Boni and Woodlands), riverine vegetation, critical water catchment areas and special ecosystems
		Integrate environmental concerns in policy formulation, resource planning and development processes	<ul style="list-style-type: none"> • Waste Management and Pollution Control through research, legislation, use of viable technologies and enforcement of statutory mechanisms for the disposal of human and industrial waste, elimination of harmful emissions including those from factories and motor vehicles • Develop and maintain an inventory of all vital habitats in the county, and create a biodiversity information data base of all plant and animal species, indicating their potential use • Identify rare and endangered species with the aim of protecting them from extinction • Encourage the participation of local communities in conservation and management of the environment by giving incentives • Jointly develop and implement harmonized regional inter-County for sustainable management of trans-boundary resources • Devise means to measure the value of unexploited natural resources, especially biodiversity, in economic terms • Strengthen Environmental Governance and harmonize sectoral policies, legislation and regulations
		Community participation shall be mainstreamed in the protection	<ul style="list-style-type: none"> • Sensitize communities living around the natural resources on the need for conservation of the resources

		and conservation of natural resources	<ul style="list-style-type: none"> • Develop mechanisms for sharing benefits accruing from the natural resources by the conservation agencies in consultation with the local communities • Identify and map all disaster-prone areas for sustainable management
		Mainstream disaster risk management and climate change and its impacts into the planning processes	<ul style="list-style-type: none"> • Build and strengthen research capacity on climate change and related environmental issues • Promote water conservation, rehabilitation and restoration of all water catchments • Promote growing of drought resistance/tolerance crops • Supporting sustainable livelihoods in drought prone areas • Develop and promote the use of green energy • Provide early warning systems (EWS)
8)	Integrated Transportation Network	Develop an integrated and functional transport systems for the urban areas within the County	<p>Air Transport:</p> <ul style="list-style-type: none"> • Upgrade the existing public airstrips to support tourism and value addition for agricultural and livestock products in the County <p>Rail Transport:</p> <ul style="list-style-type: none"> • Link the principal town and other urban centers with the national railway corridor <p>Road Transport:</p> <ul style="list-style-type: none"> • Extend the national transportation corridors consisting of road and rail to provide connectivity between Garissa and other counties • Provide access and linkage, between county headquarters and sub-county headquarters and for local access and link them to national transportation corridors • Expand all roads connecting county headquarters to sub-county headquarters to at least 30m and develop them to bitumen standard • Coordination with national roads authorities
		Develop an efficient and affordable Mass Public Transport for all urban areas	<ul style="list-style-type: none"> • Provide public transport system based on bus rapid transport system for the principal town of Garissa

			<ul style="list-style-type: none"> • Adopt transit-oriented development in the planning, design and development of all public urban transport • Integrate land use with urban transport planning • Configure urban based activities to support mass transit systems and reduce the need for travel • Establish a comprehensive transport management information system for all transport modes
		Develop an urban transport policy that facilitates an integrated, balanced and environmentally sound urban transport system	<ul style="list-style-type: none"> • Garissa County Government to develop policies to limit use of private transport and maximize on public transport • Develop a main public transport termini in all major urban areas and county headquarters to cater for all the various transport modes, including NMIMTs (Non-Motorized and Intermediate Means of Transport) to enhance efficiency and connectivity between transport modes • The County Government to provide a framework for development and management of public service termini by the private sector through public private participation • Plan, construct and manage designated terminal facilities in the periphery of the urban areas to accommodate parking spaces for the private vehicles and interchange to the public transport system • The County Government to identify, designate, close and regulate roads to be used by hawkers to display their wares on chosen days and times to decongest CBDs • Designate, plan and regulate strategic areas for taxis operation in the principal town and other urban areas
		Environmental conservation shall be upheld in the planning, development and management of the transportation network	<ul style="list-style-type: none"> • Enforce emission testing in all transport modes and set standards and guidelines for decommissioning of vehicles • Promote the use of green energy in all transportation systems.

9)	Providing Appropriate Infrastructure	Provide safe, adequate, reliable and affordable electricity for both urban and rural settlements	<ul style="list-style-type: none"> • Tap into solar energy for large scale production of electricity for sale to the national grid • Promote production of green energy e.g., Wind and Solar • Mainstream and enforce green energy options in the design of buildings
		Promote expansion and improvement of water reticulation systems to facilitate the access to clean, safe, adequate, reliable and affordable water in human settlements	<ul style="list-style-type: none"> • Construct and rehabilitate water supply systems including water kiosks, yard taps and pipelines in the County • Incorporate water provision in all physical and land use development plans • Development of a County rainwater harvesting strategy and water storage investment plans for the principal town, other urban centers and the villages • Explore and exploit underground water resources
		Establish a network of functional, efficient, safe, accessible and sustainable County referral health infrastructure	<ul style="list-style-type: none"> • Expand infrastructure and personnel in the County Referral Hospital • Increase the utilization of services at lower-level health facilities to reduce self-referral to the higher levels of care • Improve the system's ability to transfer clients and specimens between the different levels of the health care system • Improve preparedness and response to emergencies and disasters • Strengthen outreach systems for provision of health services to marginalized and vulnerable population • Establish fully fledged low-cost diagnostic centers and provide adequate screening and treatment facilities for persons with chronic or terminal conditions including cancer, diabetes and kidney failure within the county
		Promote appropriate, quality, efficient and cost-effective ICT infrastructure in both rural and urban areas	<ul style="list-style-type: none"> • Develop and upgrade ICT infrastructure within the County • Extend ICT infrastructure to cover all the rural and local growth centers • Mainstream use of ICT in all levels of government and the private sector (e-government)

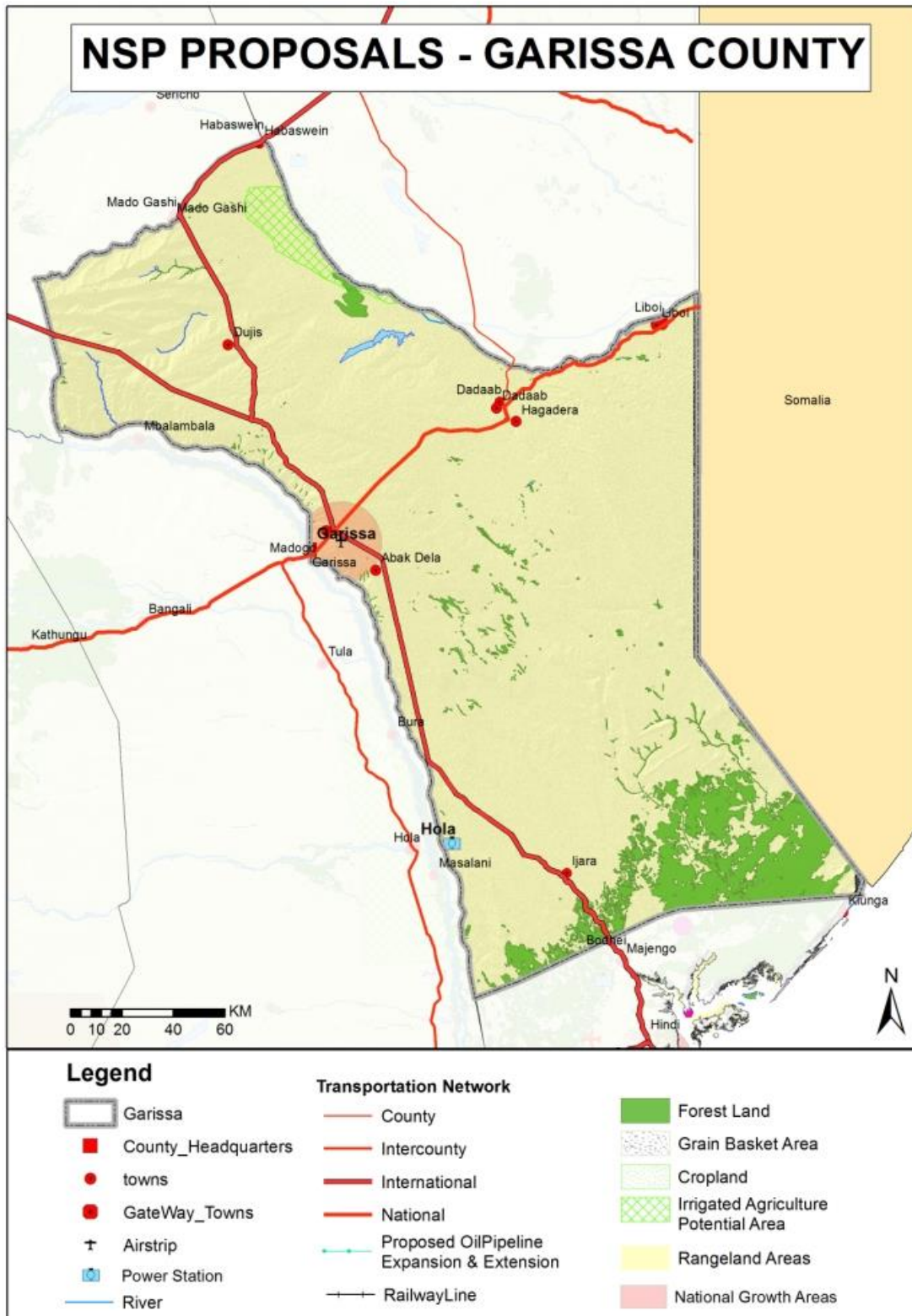
		Promote expansion of sewerage systems and waste management facilities to improve sanitation in human settlements	<ul style="list-style-type: none"> • Service all urban settlements by a centralized sewerage treatment system and solid waste disposal facilities • Expand sanitation to cover the entire County • Apply appropriate technology solutions to sewerage treatment in rural and low-density housing areas • All physical and land use plans to make provision for development of sewer systems and treatment works and solid waste disposal sites • Expansion of urban boundaries to be guided by investment in infrastructural services • Enactment of laws at the County level to incorporate private public partnerships in infrastructure investments • Adopt appropriate technology to facilitate reduction, recycle and reuse of waste (3R's) • Undertake rehabilitation of storm water drainage systems in all urban areas
		Plan, develop, maintain sporting infrastructure	<ul style="list-style-type: none"> • Build one national stadium in Garissa town • Establish a County Sports Talent Center to act as a feed to the international center to scout, nurture and develop sports talents at the sub-national levels
10)	Promoting Rapid Industrialization	Promote the cluster development strategy to focus on proximity to raw materials and markets of County-specific products	<ul style="list-style-type: none"> • Establish livestock produce industries in the County to promote value addition • Concentrate urban-based industries in the principal town and other urban centers • Mineral-based industries to be located in-situ where the minerals are found
		Identify and plan specific sites for industrial development and service them with the appropriate infrastructure	<ul style="list-style-type: none"> • Plan and set aside land for industrial development in the County • Promote development of SMEs and designate land and plan for Industrial Parks in the County • Integrate the industrialization process and environment conservation

			<ul style="list-style-type: none"> • Provide an integrated, efficient, reliable and sustainable transport infrastructure • Increase availability of clean water and improve Sanitation
		Provide adequate and affordable energy supply for the industrial sector	<ul style="list-style-type: none"> • Provide reliable energy infrastructure by extending the national grid network to all parts in the County • Expand, modernize and upgrade electricity generation and supply • Adopt renewable energy generation programs by provision of incentives and enforcement of building laws requiring utilization of renewable energy • Promote the adoption of energy efficient technologies to lower the demand for energy

DRAFT

Map 3 provides a spatial representation of the policies proposed for Garissa County.

Map 3: NSP Proposals for Garissa County



Source: State Department for Physical Planning, 2022

5 IMPLEMENTATION AND ADOPTION OF THE GUIDELINES

5.1 Overview

The implementation framework identifies activities and further ties them with responsible actors, resources and timeframes adequate for their execution. It constitutes a deliberately established method, means or system of ensuring that the policies, strategies and measures outlined in the guidelines are continuously and consistently executed to achieve their objectives.

To effectively implement the guidelines, the various sectors, actors and levels of planning have been identified and have to work together and the mandate of the sectors at the National and County levels of planning have to be integrated

5.2 Implementation Approaches

The County Specific Guidelines will be implemented through various approaches including:

1. Preparation of spatial plans to integrate and conform to the proposals of the County Guidelines. The plans include:
 - Inter-County Physical and Land Use Development Plans for Metropolitan regions, conservation zones, river basins, water towers, coastal ecosystems, trans-boundary resource areas and transport corridors, among others.
 - County Physical and Land Use Development Plans.
 - Local Physical and Land Use Development plans for Cities, Urban areas, special area plans, subject plans and detailed neighbourhood plans, among others.
 - Sectoral plans
2. Integration of the guideline policies, strategies and measures into the County sector plans, programs and projects. Ministries, Departments and Agencies (MDAs), County and National Departments identified in the plan to administer the policies, strategies and measures are required to translate them into action plans, programmes and projects and to include them in their subsequent sector plans.
3. Formulation of policies, regulations and standards to guide development control

5.3 Implementation Framework

The implementation of the various policies, strategies, measures, programmes and projects under these Guidelines will involve a wide range of actors. It will require a coordinated approach and partnership between the National and County Governments and non-state actors. It may require re-engineering of institutions and a number of actors to undertake the implementation through a harmonized approach.

The National Spatial Plan identified a multi-levelled framework for implementation of the plan that incorporates all levels of actors. In this regard, the institutions identified in the NSP to undertake implementation of the plan at County-level shall also be mandated to ensure implementation of this Guidelines.

The following are the Institutions mandated to ensure implementation of the County Specific guidelines;

5.3.1 County Physical Planning Committee

The role of the County Planning Committee shall be to ensure aspirations of the guidelines are articulated in preparation of the County Spatial Plans, County Integrated Development Plans and Local Physical and Land Use Development Plans.

The composition of this committee consists of;

- i. The Governor who will be the Chairperson,
- ii. the Deputy Governor,
- iii. the County Executive Committee Members from various sectors
- iv. Directors from various relevant County Departments including Lands and Physical Planning, Economic planning, Agriculture, Industrialization, Tourism, Environment, Transport and Infrastructure

The functions of the committee include;

- 1) To promote effective integration between physical, economic and sectoral planning within the framework of county development policies.
- 2) To provide policy guidance for the implementation of strategic spatial projects
- 3) To ensure that the guidelines policies and measures are mainstreamed in the various county plans.

- 4) To mobilize resource for implementation of the Guidelines.

5.3.2 County Planning Unit (CPU)

The Technical Unit shall provide technical support to the various implementing County departments on issues relating to physical planning.

The CPU shall;

- i. Monitor the Implementation of the guidelines.
- ii. To disseminate components of the guidelines to the various county departments.
- iii. Update the County Physical Planning Committee on a regular basis on the implementation of the guidelines.

The County Director of Physical Planning shall be responsible for preparation of an annual state of planning report which shall among other things appraise the status of implementation of the guidelines.

5.3.3 National Land Commission

The National Land Commission shall play its oversight role in land use planning to ensure efficient implementation of the NSP and the guidelines. Other functions of the Commission in the implementation of the NSP and the guidelines include the following: To formulate mechanisms and parameters for monitoring and overseeing land use planning.

- i. To ensure that relevant planning authorities carry out their functions as required by law.
- ii. To make recommendations for improvements of the planning systems in the county.
- iii. To mobilize resources to support physical/land use planning.

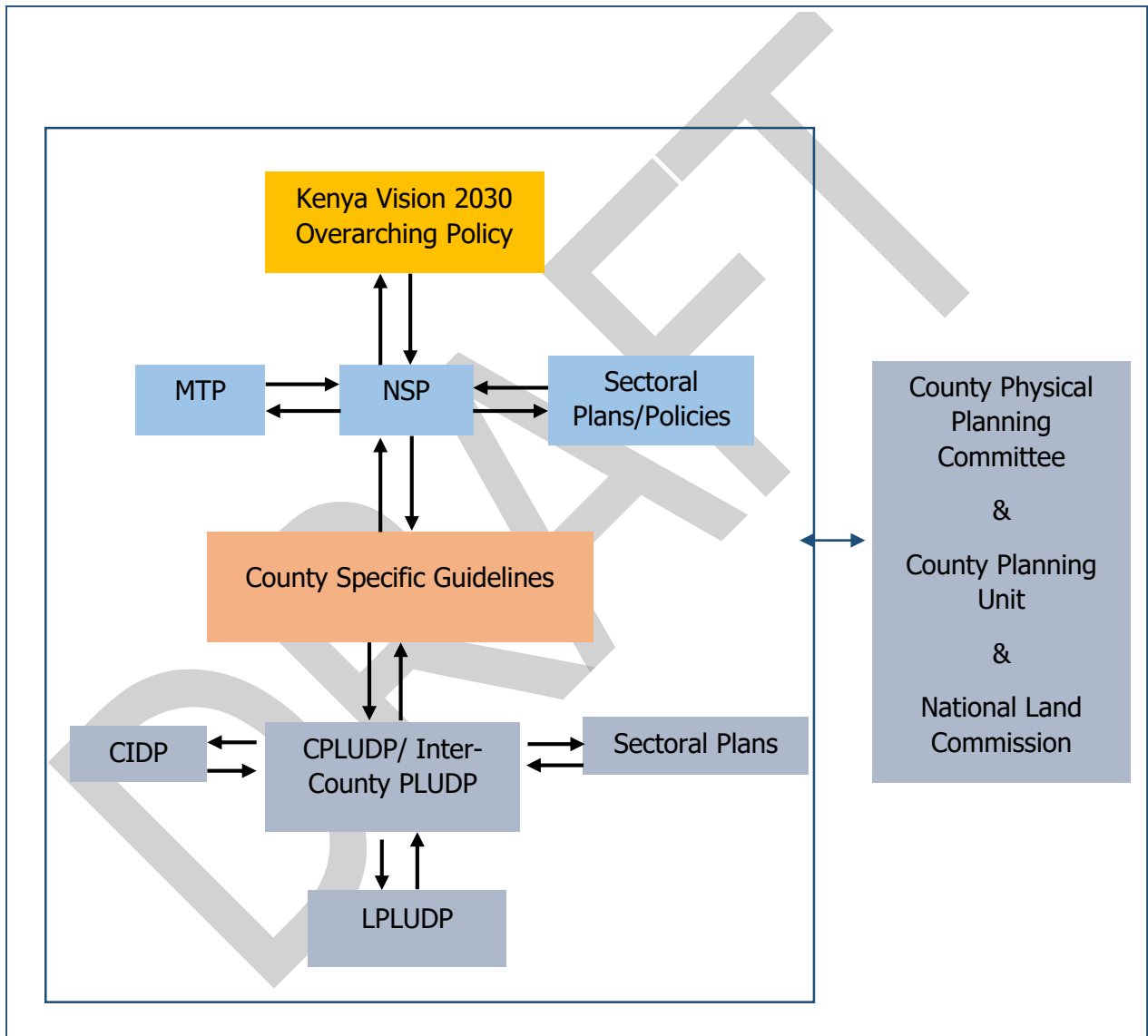
5.4 Monitoring and Evaluation

Implementation of the guidelines will be monitored and evaluated to measure both outputs and outcomes and ensure that the intended actions are implemented in a timely manner. To facilitate attainment of the objectives of the guidelines, performance indicators will be developed by the County Physical Planning Department

for efficient monitoring. Periodic reports will be prepared in relation to progress being made in their implementation.

The graphic below illustrates the implementation structure for County Specific guidelines.

Figure 4: NSP Implementation Organizational Structure



Source: The National Spatial Plan, 2015-2045

5.5 Conclusion

The application of these guidelines will be undertaken by a number of actors and hence the need for a coordinated approach. The lead agency will be Garissa County Government which will be responsible for implementing various county specific initiatives proposed by the guidelines.

The National Government, County Government of Garissa, the private sector and the general public will be critical in actualizing the objectives of these guidelines. The County Physical Planning Committee shall develop a communication strategy to enhance the synergies.

The National Department of Physical Planning shall undertake sensitization, training and capacity building of the County Government and National Government institutions and agencies that will be involved in the implementation of these guidelines. Special attention will be given to the County physical planning units, as they will be expected to provide technical expertise in the implementation of the County specific policies and strategies.