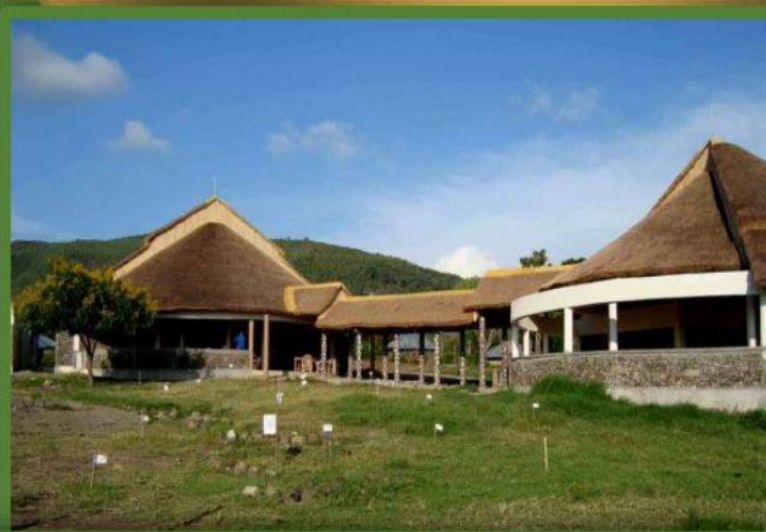




NATIONAL SPATIAL PLAN GUIDELINES FOR HOMABAY COUNTY

Optimal productivity, sustainability, efficiency and equity in
use of our land and territorial space



©JUNE 2022

MINISTRY OF LANDS AND PHYSICAL PLANNING
DEPARTMENT OF PHYSICAL PLANNING

Foreword

Under the Fourth Schedule of the Constitution of Kenya 2010 on the distribution of functions, Part 1 (21) and (32) the National Government is charged with the responsibility of formulating general principles of land planning, Policies and guidelines, coordination of planning by the counties, capacity building and technical assistance to the counties. On the other hand, Part 2(8) allocates the function of county planning and development to County Governments.

The State Department for Physical Planning in the Ministry of Land and physical planning prepared the National Spatial Plan (NSP) in response to the vision 2030 requirement to guide the spatial development of the country over a period of 30 years beginning in 2015. The Plan is an important milestone not only for the Ministry but also for the country having been identified as a flagship project under the Kenya Vision 2030 as one of the foundations for the country's socio-economic transformation

The National Spatial Plan covers the entire territory of Kenya and defines the general trend and direction of spatial development for the country. It aims at achieving an organized, integrated, sustainable, and balanced development of the country by providing a framework for better national organization and linkages between different activities within the national space.

The NSP provides strategies and policies to facilitate sustainable exploitation of the huge potential the country possesses for agriculture, tourism, energy, water, fishing, and forestry. It is expected to reduce regional inequalities that have existed by ensuring that these regions are no longer perceived as low potential but as differently endowed.

In order to implement the plan, the counties were expected to play a key role by mainstreaming strategies, policies, and measures identified in NSP into the county spatial planning systems. These guidelines are therefore a tool for enhancing this critical path to effectively achieve its objectives. They will provide a direction for development planning by the counties as they discharge their responsibility of preparing county and local plans. The Guidelines have identified planning policies,

strategies, and measures that plans at the county level are expected to mainstream and propagate. The policies address among others, the protection of rich agricultural land, development imbalances, conservation of environmentally sensitive areas, urban containment, and promotion of industrial development.

The guidelines provide direction on the existing potentials, the opportunities, the constraints(challenges) inhibiting harnessing them, the strategies to apply, respective policies required, and the necessary measures to achieve optimal productivity, sustainability, efficiency, and equity in the use of county land resources.

The guidelines are an opportunity on how best to refocus, vary and complement areas that require different approaches in order to respond to country-specific needs and promote the livelihoods of their people while contributing to the national aspirations of vision 2030, regional objectives of the Africa Agenda 2063, and international targets of sustainable development. The refocusing will also be handy in reviewing and making decisions on NSP which is due for review in 2025.

PREFACE

The National Spatial Plan recognized that Kenya is greatly endowed with massive and diverse resources distributed over the national space that require an integrated and coordinated approach. The plan outlined policies and strategies aimed at optimizing the country's potential while mitigating the challenges. County Specific Guidelines will provide a planning framework for the integration of the National Spatial Plan into the county spatial planning system.

They form clear statements of how the National Spatial Plan is linked to inter-county, county, and lower-level county plans and provide clarification on the anticipated sustainable development outcomes of implementing the plan. The guidelines are intended to link the NSP strategies and policies to the county's planning, programs, and projects.

The county governments will adopt, develop and implement their plans based on the policies, strategies, and measures articulated in the NSP. The realized county plans are expected to guide, harmonize, and facilitate development within each county

hence contributing to the overall implementation of NSP. The Guidelines will also form an efficient compass and monitoring tool for national and county governments to jointly pursue sustainable planning and appropriate implementation mechanisms.

It is imperative that as a country, we prioritize the implementation of this strategic document so as to promote balanced development and competitiveness within and across the 47 counties. For the country to be globally competitive, we need to balance development across the country and promote optimal utilization of land and land-based resources as well as cultivate an integrated approach in addressing the intertwined challenges of regional imbalances/inequalities, rural development, underutilization of the available resources, urbanization, environmental degradation, and inefficient transportation.

DRAFT

Table of Contents

PREFACE	3
List of Maps	6
List of Figures.....	6
List of Tables	6
1 INTRODUCTION	7
1.1 Background.....	7
1.1 Purpose of the Guidelines	7
1.3 Objectives of the Guidelines	7
1.4 Scope.....	8
1.5 Justification.....	9
1.6 Application of the Guidelines	10
1.7 Process of Preparing the Guidelines	10
1.8 Targeted users of the guidelines.....	11
1.9 Key Principles.....	13
2 THE POLICY, LEGAL AND PLANNING FRAMEWORK FOR THE GUIDELINES.....	14
2.1 Constitutional context.....	14
2.2 Policy Context	14
2.2.1 Sessional Paper No. 10 of 2012 on Kenya Vision 2030	14
2.2.2 Sessional paper No.01 Of 2017 on National Land use Policy.....	14
2.3 Legal Context	15
2.3.1 The Physical and Land Use Planning Act No. 13 of 2019	15
2.3.2 County Governments Act, 2012	15
2.3.3 Urban Areas and Cities (Amendment) Act, 2019.....	15
2.3.4 Environmental Management and Coordination (Amendment) Act, 2015.....	15
2.3.5 National Land Commission Act, 2012	15
2.4 Planning Context.....	16
2.4.1 National Spatial Plan (NSP)	16
2.4.2 NSP linkage to other plans	16
3: COUNTY PROFILE.....	18
3.1 Overview	18
3.2 Location and size	18
3.3 Bio- Physical Characteristics.....	19
3.4 Socio- Economic Status	19
3.4.1 Population and Demography	19

3.4.2 Economy.....	20
3.4.3 Physical Infrastructure	21
3.4.4 Public Utilities.....	21
3.5 Comparative Advantage.....	22
4: DEVELOPMENT STRATEGIES AND POLICY GUIDELINES FOR HOMABAY COUNTY	24
4.1 County Specific Issues and Strategies	24
4.2 National Spatial Plan Policy Guidelines and Measures for HomaBay County	36
5.IMPLEMENTATION AND ADOPTION OF THE GUIDELINES	46
5.1 Overview.....	46
5.2 Implementation Approaches.....	46
5.3 Implementation Framework.....	47
5.3.1 County Physical Planning Committee.....	47
5.3.2 County Planning Unit (CPU).....	48
5.3.3 National Land Commission.....	48
5.4 Monitoring and Evaluation	48
5.5 Conclusion	51

List of Maps

Map 1:Location of Homabay County.....	18
Map 2: Location of Homabay County	18
Map 3: Nsp Proposals for Homabay County	45

List of Figures

Figure 1: The Scope of the Guidelines	9
Figure 2: Policy Focus of the NSP.....	16
Figure 3: NSP Linkage to other Plans.....	17
Figure 4: Implementation structure of the guidelines	50

List of Tables

Table 1: Targeted Users of the Guidelines	11
Table 2:Population Projection	19
Table 3:County Specific Issues and strategies	25
Table 4: NSP Policy guidelines and measures for the County.....	37

1 INTRODUCTION

1.1 Background

The County Guidelines set out policies, strategies and measures that will guide the long-term spatial development of the county for a period of 30 years. They cover the entire county and defines the general trend and direction of its spatial development.

The guidelines have been developed in line with the four thematic areas as outlined in the NSP. They provide a guide to the Planning Authority at the county on how to incorporate the NSP policies, strategies and measures during the preparation of County Spatial Plans and other lower level plans like the Local Physical and Land Use Development Plans consequently implementing the NSP.

The NSP County Specific implementation guidelines summarize the County's existing potentials and opportunities, the constraints (challenges) inhibiting harnessing of the potentials, the applicable strategies and respective policies required, and the necessary measures to achieve optimal productivity, sustainability, efficiency and equity in the use of the county land resources. They act as a reference point

1.1 Purpose of the Guidelines

The purpose of the County Specific Guidelines is to provide a planning framework for mainstreaming of the National Spatial Plan to the County spatial planning system.

The guidelines are intended to assist the County enhance the implementation of the NSP by linking the proposed county specific policies, strategies and measures into the County plans, programs and projects while putting measures in place for achieving them. The guidelines inform preparation of various County Physical Plans such as the County Physical and Land Use Development Plans.

For optimal implementation of these plans, a County Integrated Development Plan (CIDP) is essential since it is a sectoral and budgetary based plan that draws its implementation programs and projects from the County Physical Plans.

1.3 Objectives of the Guidelines

The guidelines provide policies, strategies and measures to deal with challenges of regional imbalances/inequalities, rural development, underutilization of the available resources, urbanization, environmental degradation and inefficient transportation.

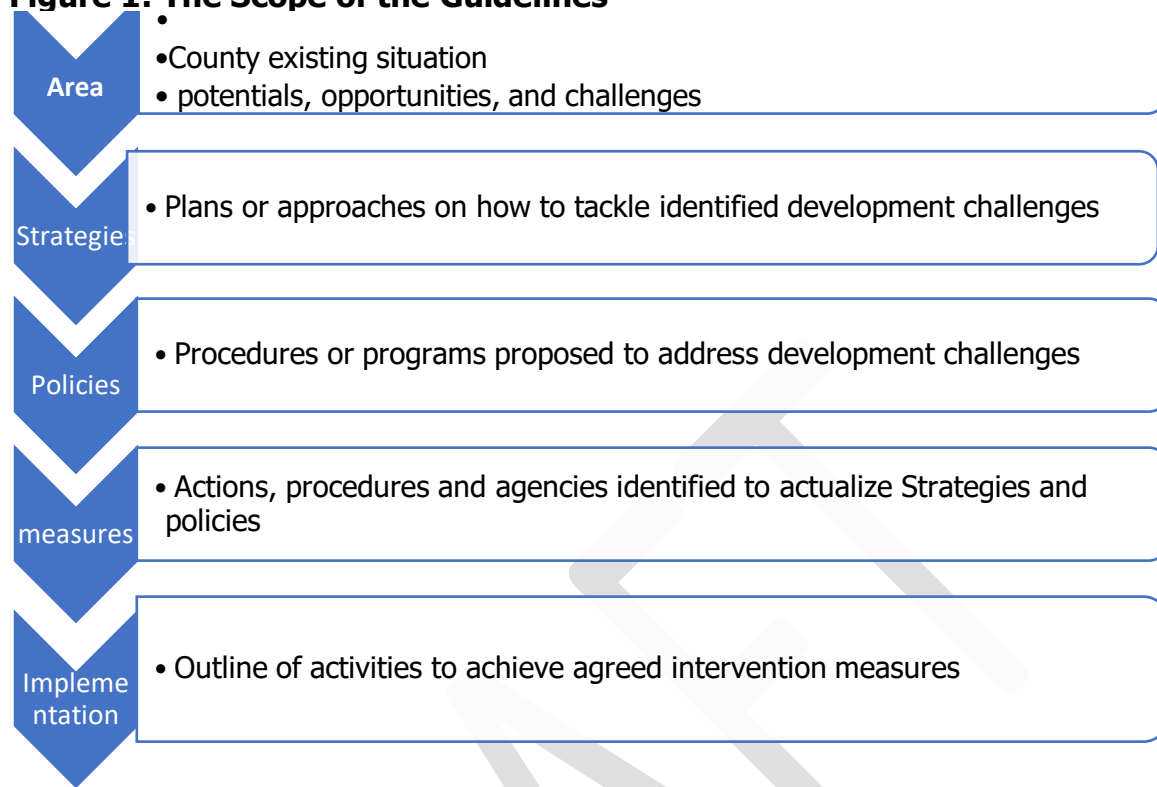
Specifically, the objectives are;

1. To sensitize the County on the provisions of the NSP
2. To promote synergy between National and County planning
3. To guide the County, implement the NSP
4. To identify the roles of the different actors in the implementation of the NSP.

1.4 Scope

The guidelines comprise policies, strategies and measures specific to Homabay County covering approximately 2037 km². The guidelines highlight the County's existing potentials and opportunities, the constraints (challenges) inhibiting harnessing of the potentials, the applicable strategies and respective policies required, and the necessary measures, actions, approaches, plans and procedures prescribed to achieve optimal productivity, sustainability, efficiency and equity in the use of the county's land resources and an outline of activities to execute agreed interventions as captured in the National Spatial Plan, as indicated in Figure 1 below. These guidelines are effective up to the year 2045.

Figure 1: The Scope of the Guidelines



Source: State Department for Physical Planning, 2022

1.5 Justification

Since the approval and launch of the NSP, its implementation has been undertaken in an uncoordinated manner hence the guidelines will provide a standardized approach for all Counties. The guidelines are also an important tool for tracking and evaluating implementation of the NSP both at National and County levels.

The preparation of County Spatial Plans and other lower-level plans which is a mandate of Counties has been slow and, in some Counties, has not begun at all. These guidelines are therefore a quick reference in preparation of county plans and for some Counties to help optimize land in the absence of these plans.

1.6 Application of the Guidelines

The guidelines will be used or applied in the following ways to achieve a more sustained and coordinated development of the County;

- To effectively coordinate planning between the National and the County Government;
- To improve the County Government's capacity to formulate, coordinate and implement integrated development policies, strategies, measures, programs and projects to address spatially unbalanced development;
- To inform strategic infrastructure policy and public investment decisions which support the achievement of balanced development in the County;
- To strengthen County inter-sectoral coordination within a spatial framework and provide the private sector with a clear context in which they can make investment decisions;
- To optimize the use of land and natural resources by providing a framework for making sustainable locational choices for sustainable development and conservation of land productivity in the County.

1.7 Process of Preparing the Guidelines

The process involved reviewing the National Spatial Plan and identifying key issues, spatial policies, development strategies and measures specific to Homabay County. These key issues, spatial policies, development strategies and measures will be realized through preparation of County and other lower-level plans.

Research was undertaken on various thematic areas to enrich the County specific issues and development strategies as well as policy guidelines and measures/ interventions. Further, preparation of the guidelines considered the constitutional, policy and legal provisions on physical and land use planning. Expert opinion was sought on the identified issues, policies, measures and strategies for implementation viability.

The preparation of the guidelines was identified as one of the implementation tools of the NSP, in which key NSP issues, policies, strategies and measures

were translated into specific action plans, programs and projects at the County level.

1.8 Targeted users of the guidelines

These Guidelines have diverse consumers and application depending on prevailing circumstances and actors as demonstrated in Table 1 below:

Table 1: Targeted Users of the Guidelines

User	Application
County Executive Committee Member in charge of Physical and Land Use Planning	<ul style="list-style-type: none"> • Preparation of county and lower-level plans • Linkage of planning structures • Quality control of the various county plans • Formulate county planning policies and strategies • Establish county specific planning institutions • Coordinate and implement county plans and policies
The County Director of Physical and Land Use planning	<ul style="list-style-type: none"> • Advising the county government on the impact of the county specific guidelines to the county • Preparation of County physical and land use development plans and other lower level plans • Formulating County physical and land use planning policies, guidelines, strategies, and standards; • Issuance of development permission and other development control instruments under The Physical and Land Use Planning Act, 2013.
Licensed physical and land use planners both in public and private sectors	<ul style="list-style-type: none"> • Prepare, coordinate and implement spatial plans • Quality control of plans and consultancy services • Formulate policies, strategies and development guidelines • Dispute resolution
County assembly	<ul style="list-style-type: none"> • Approval of strategic sectoral budgets such as planning • Vetting of various County specific plans

	<ul style="list-style-type: none"> • Formulation and passing of County planning legislation • Enhance capacity to oversee the executive on spatial planning
Ministries, Departments and Agencies	<ul style="list-style-type: none"> • Mainstreaming relevant NSP policies, programs and projects • Allocation of resources to priority areas, • Strengthening linkages with spatial planning in resource management
The National Land Commission (NLC)	<ul style="list-style-type: none"> • Oversight role in land use planning to ensure efficient implementation of the NSP • Ensure relevant planning authorities carry out their functions as required by the law
Practitioners in the built environment	<ul style="list-style-type: none"> • Advance NSP relevant policies, programs and projects hence optimization of land resource • Appreciate sectoral Linkages to spatial planning • Facilitate incorporation of the policies, strategies and measures into, County specific plans
Community, developers and investors	<ul style="list-style-type: none"> • Comprehend the County priority sectors and County Plans and policies • Complement County spatial planning and implementation measures • Making informed investment decisions
Development partners	<ul style="list-style-type: none"> • Reference frame for selecting and funding spatial planning activities • Understand planning linkages and implementation • Informed development decisions
Training institutions	<ul style="list-style-type: none"> • Compliment the curriculum for training of spatial planners • Understand the planning procedures and processes

1.9 Key Principles

The principles, as applied in the NSP, should guide and form the basis upon which the lower-level physical and land use plans are prepared. Further the principles should ensure sustainable, coordinated, and realistic development. They include the following:

1. Effective Public participation/engagement: All plans shall be prepared in a participatory and consultative manner with relevant stakeholders and sectoral actors.

2. Urban containment/Compact cities: Local plans shall strive to limit and control urban growth within the set urban boundaries to protect rich agricultural land, mitigate urban sprawl and reduce cost of infrastructural provision.

3. Livability: The planning of urban areas shall enhance the livability index in the area of housing, environment, transportation, health, and social engagement. The urban areas must be economically viable, socially inclusive and ecologically sustainable.

4. Smart and green urban growth: Plans shall promote sustainable use of energy, creation of green spaces, reduce the need for car travel, and promote use of local materials, support businesses, protection of heritage and creation of unique character.

5. Sustainable development: Balancing social, economic and environmental dimensions of development and catering for current and future generations.

6. Promotion of ecological integrity: Plans shall promote the protection and conservation of environmentally sensitive areas.

7. Promote public transportation: Favor public transportation over private transport to ensure efficiency and functionality of urban places.

8. Balanced development: Plans to ensure there/ is balanced development in the County to cure inequalities.

2 THE POLICY, LEGAL AND PLANNING FRAMEWORK FOR THE GUIDELINES

2.1 Constitutional context

The formulation of these guidelines took into account the Constitution of Kenya 2010 aspirations and Principles. Article 66 of the Constitution of Kenya 2010 gives the State powers to regulate use of any land and property in the interest of land use planning among others. The guidelines are therefore within and in response to the aspirations, values and principles as provided for in the constitution

2.2 Policy Context

2.2.1 Sessional Paper No. 10 of 2012 on Kenya Vision 2030

Kenya Vision 2030 is the overarching national development framework which all plans should be aligned to. The preparation of all spatial plans should take cognizance of the aspirations, foundations and development concepts of the vision. The preparation of the first National Spatial Plan is identified in Kenya Vision 2030 as a flagship project and is regarded as one of the foundations for socio-economic transformation. Hence the need for linkage between national planning and county planning which will be achieved through mainstreaming NSP requirements into CSPs and other lower-level plans by preparing NSP county specific guidelines to implement the NSP at lower levels.

2.2.2 Sessional paper No.01 Of 2017 on National Land use Policy

The policy was formulated to address the various challenges related to land use and ensure efficient, productive and sustainable use of land. The main goal of the policy is to provide legal, administrative, institutional and technological framework for optimal utilization and productivity of land related resources in a sustainable and desirable manner at national, County and community levels.

The policy recommends the preparation of a National Spatial Plan to provide an integrated framework for the development of the country including guidelines for sustainable rural and urban planning management. The policy also provides for the preparation of planning guidelines, policies and standards to be observed by County Governments and other sectoral agencies within the frameworks of approved physical and land use development plans. These guidelines have been prepared on

this basis and they are to be observed by counties in the implementation of the National Spatial Plan.

2.3 Legal Context

Various Acts of Parliament are in place to provide the legal framework for the implementation of the mandate provided for in Article 66 of the Constitution. The Physical and Land Use Planning Act, 2019, The Urban Areas and Cities (Amendment) Act, 2019, County Governments Act No. 17 of 2012, The Land Act No. 6 of 2012, National Land Commission Act No. 5 of 2012 among others. The NSP County specific guidelines are prepared in this context and meet this criterion.

2.3.1 The Physical and Land Use Planning Act No. 13 of 2019

This is the overarching statute that provides for formulation of both National and County physical and land use planning policies, guidelines and standards. The Act further provides for administration, types, content, process and approval of the various types of Physical and Land Use Development Plans.

2.3.2 County Governments Act, 2012

This statute mandates County Governments to carry out the planning function at the county level. The guidelines support preparation of the various county level plans that meet the recommended quality and standards.

2.3.3 Urban Areas and Cities (Amendment) Act, 2019

The statute provides for classification of urban areas and cities, their governance and management, and for integrated development planning. The guidelines are a basis for preparation of these lower-level plans.

2.3.4 Environmental Management and Coordination (Amendment) Act, 2015

The Act provides for the establishment of an appropriate legal and institutional framework for the management of the environment as well as guidelines relating to environmental management and prevention or abatement of environmental degradation. The guidelines take cognizance of this Act and will be implemented within the framework

2.3.5 National Land Commission Act, 2012

The Act mandates the National Land Commission with the management and administration of public land on behalf of the National and County Governments and to monitor and oversight physical and lands use planning in the country. The guidelines fall within the ambit of this statute and will facilitate their oversight responsibilities.

2.4 Planning Context

2.4.1 National Spatial Plan (NSP)

The National Spatial Plan (NSP) covers the whole country encompassing the exclusive economic zone. The NSP outlines policies and strategies geared towards influencing desired future distribution and organization of human activity outlined in Vision 2030 and sectoral policies and plans. It aims at achieving economic efficiency and balanced development. The various County Spatial Plans should be aligned to the policies outlined in the NSP as demonstrated in Figure 2 below.

Figure 2: Policy Focus of the NSP



Source: National Spatial Plan, 2015-2045

To actualize the NSP, a comprehensive implementation strategy has been proposed that embraces a multiplicity of actors including National Government Ministries, Departments and Agencies, County Governments and the National Land Commission. The strategy proposes the establishment of the following institutions as key in the implementation of the Plan; The National Physical Planning Council, the National Technical Committee and the County Physical Planning Committee.

2.4.2 NSP linkage to other plans

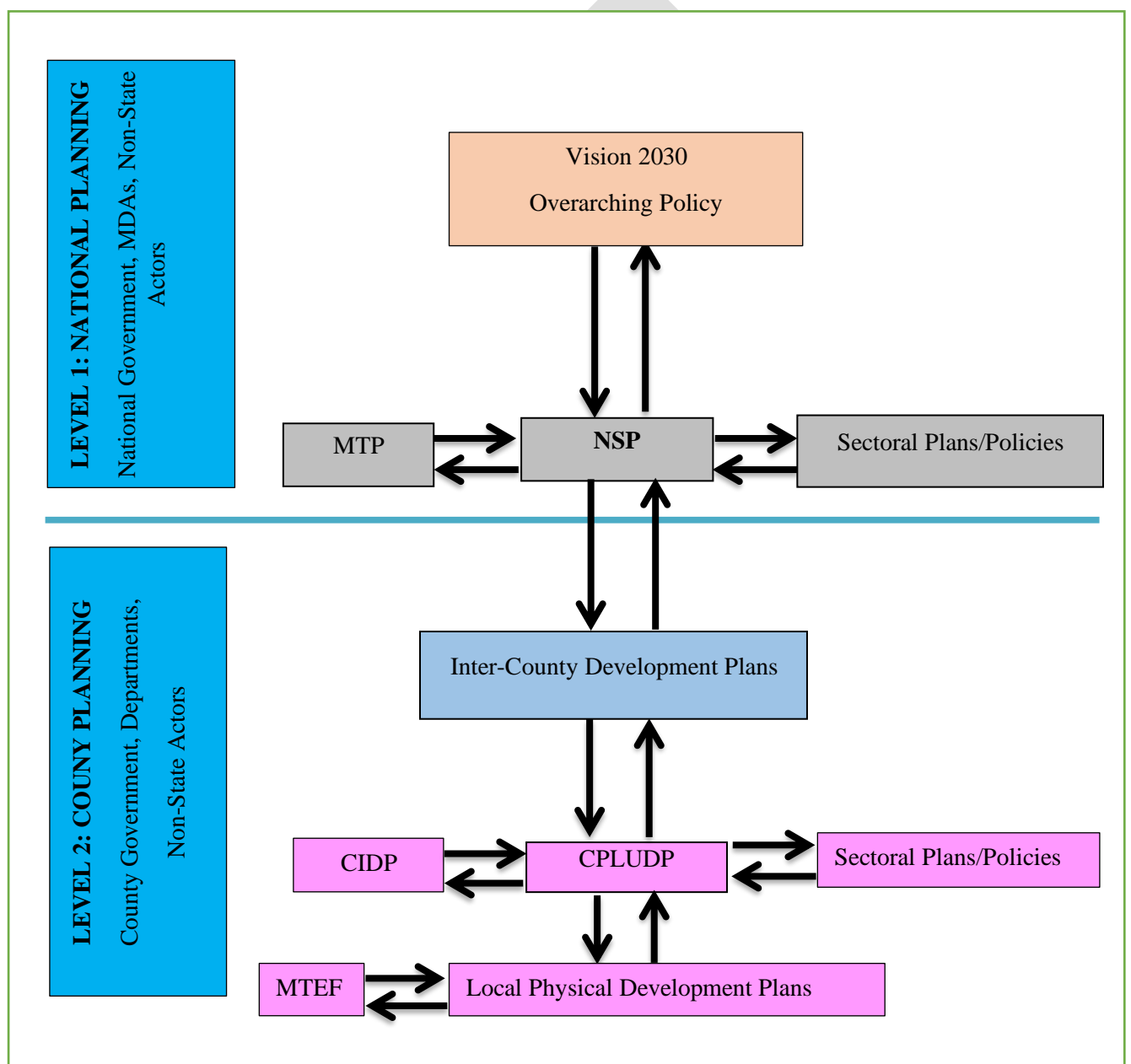
The linkage of the National Spatial Plan (NSP) to county and other lower-level plans is key to realization of its aspirations and the successful actualization of these plans. The

NSP provides a spatial framework to ground the Vision 2030 flagships projects and form a basis for coordination of County policies, strategies, measures and plans.

Inter County and County plans take into considerations the policies, measures and strategies of the NSP and implements them actualizing its aspirations.

County Physical and Land Use Development Plans provide a framework where the CIDP draws its programs and projects. The implementation of the CIDP in turn leads to realization of the objectives of the County Physical and Land Use Development Plan.

Figure 3: NSP Linkage to other Plans



Source: The National Spatial Plan, 2015-2045

3: COUNTY PROFILE

3.1 Overview

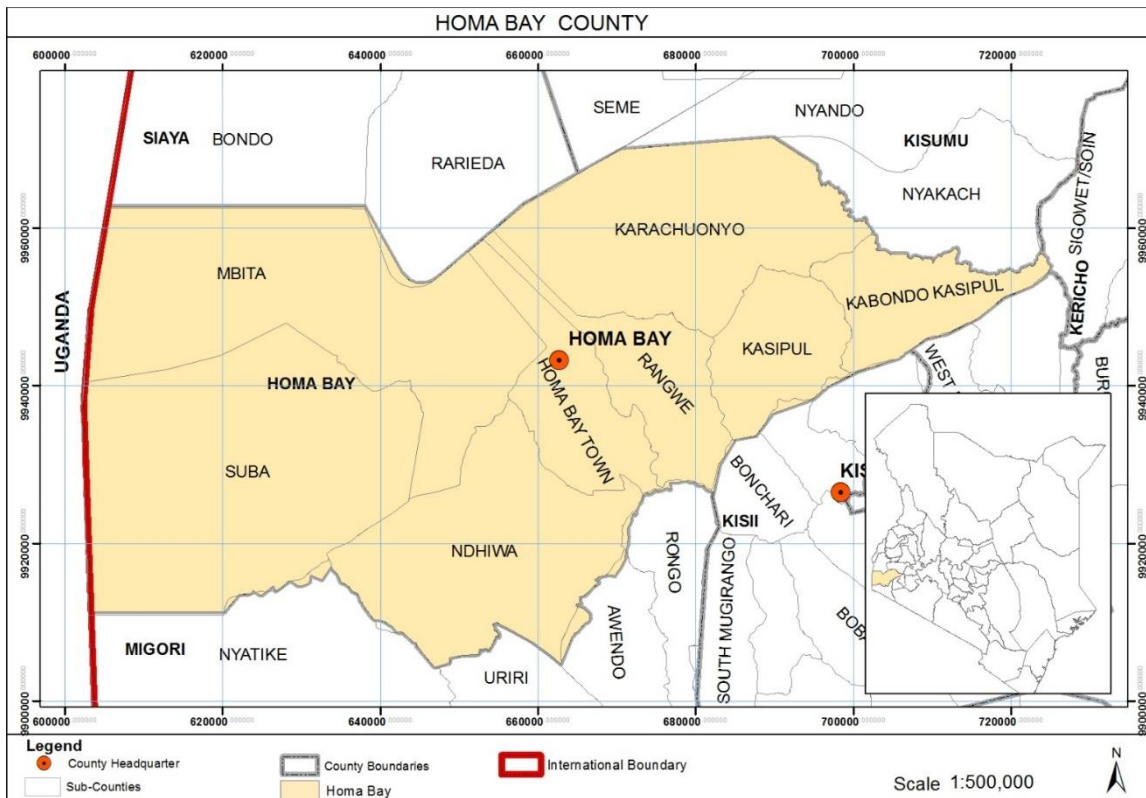
The chapter below describes the county profile which includes its location, bio-physical context, socio-economic status and lastly the county's comparative advantage.

3.2 Location and size

Homabay County is located to the South Western Kenya along Lake Victoria. It borders Kisumu and Siaya counties to the North, Kisii and Nyamira counties to the East, Migori County to the South and Lake Victoria and the Republic of Uganda to the West. The county covers an area of 4,267.1 Km² inclusive of the water surface which on its own covers an area of 1,227 km².

Map 1 below shows the location of the County in national and regional context.

Map 1: Location of Homabay County



Source: State Department for Physical Planning, 2022

3.3 Bio- Physical Characteristics

Topography- the County is characterized by residual highlands such as Gwasssi and Ngorome hills in Suba, Gembe and Ruri Hills in Mbita, Wire Hills in Kasipul as well as Homa hills in Karachuonyo. Koder forest in Kasipul and the Kanyamwa escarpment that runs along the borders of Ndhiwa and Mbita also form part of the upland plateau. To the west of the county lies the Lambwe Valley where Ruma National Park is located.

The county is divided into two main relief regions namely the lakeshore lowlands and the upland plateau. The lakeshore lowlands lie between 1,163 – 1,219 m above the sea level and the upland plateau starts at 1,219 m above the sea level.

Water resources- The County is dissected by a number of rivers namely Awach Kibuon, Awach Tende, Maugo, Kuja, Rangwe and Riana rivers. There are also several seasonal rivers and streams which originate from highlands within the county.

The mean annual rainfall ranges from 700 to 800 mm. with temperatures ranging from 17.1°C to 18.6°C, the temperatures are however lower in areas bordering Kisii and Nyamira highlands and higher in areas bordering the lake.

3.4 Socio- Economic Status

3.4.1 Population and Demography

The County had a population of 1,131,927 people consisting of 539,560 males and 592,367 females according to the 2019 Kenya Population and Housing Census Volume I Report. The population of Homabay is projected to be 2,567,338 by the year 2045. The table below shows the population projected to the year 2045 for both males and females.

Table 2: Population Projection

Year	2019	2020	2025	2030	2035	2040	2045
Population size	1,131,927	1,168,149	1,367,404	1,600,647	1,873,675	2,193,274	2,567,388
Male	539660	556857	651841	763028	893181	1045534	1223874

Female	592367	611292	715563	837619	980494	114774 0	134351 4
households	251,539	271,663	318,001	372,243	435,738	510,064	597,067
Area	3,152.5 0	3,152.5 0	3,152.5 0	3,152.5 0	3,152.5 0	3,152.5 0	3,152.5 0
Density	359	371	434	508	594	696	814

Source: State Department for Physical Planning, 2022

3.4.2 Economy

Agriculture

Agriculture is the main economic activity contributing to 75 per cent of the household incomes. The agriculture sector employs up to 60 per cent of the labour force in the county. Coffee, tea and macadamia are the main cash crops in the county. The main food crops grown in the County are maize, beans, sorghum, millet, sweet and potatoes. Fishing remains a prominent activity in Homabay County and the main types of fish harvested include Nile perch, tilapia and clarias (Omena). Aquaculture is relatively underdeveloped in the county. Livestock keeping is another form of agriculture and the livestock bred in the county include zebu cattle, the red Maasai sheep and the small East African goat.

Tourism

Homabay County sits in a prominent position to be a lead destination in the Western Tourism Circuit and is home to Ruma National Park which is the only park where unique and rare species like the roan antelope can be found. Other sites of mythical interest like the Tom Mboya Mausoleum, the Mfangano Rock Art, Homa Hills Hot Spring and Simbi Nyaima. There are over 18 islands, peninsulas and bays some with unique fauna and flora and an impressive array of physical features with great aesthetic value. It also boasts of breath-taking scenery and forested landscape leading

to and around the Lake Victoria shore line, especially within Mbita and Suba, such as is the case with the Sikri peninsula.

Industry

The County industry include fish (Homa Bay Town and Mbita Point); one sugar industry (Ndhiwa); an ice plant (Mbita Point that processes and packages drinking water and, an integrated industry in Kwethumbe (Suba) processing industries. The cotton processing ginnery in Homa Bay had collapsed due to market and technological challenges as a result of the introduction of cheap synthetic alternatives. The County's cottage industry is doing well with about 6,400 artisans registered in 356 Jua kali associations though most of them are dormant.

3.4.3 Physical Infrastructure

Infrastructure is key to the achievement of the National Spatial Plan objectives of global competitiveness, regional balance and optimal utilization of land and other resources. Homabay has fairly developed infrastructure including transport, physical and social infrastructure. Which have a high potential of economically empowering its People and attracting private investors if well maintained.

The sector faces problems regarding poor connection, low coverage, unreliability, high costs, skewed distribution and low/surpassed design. To rectify this situation clear indicative policy, strategies and measures have to be developed and implemented to achieve overall efficiency.

The transportation networks used in the county includes the water, air and road transport. Water remains a favorable means of transport between Suba, Mbita, Homa Bay Town and Karachuonyo sub-counties of Homa Bay County. The main roads in the county are class A1 (Kisii-Kisumu), one class C20 (Homa Bay – Rongo), two class C19 (Homa Bay – Mbita and Homa Bay – Kendu Bay) and lastly one class C18 (Rodi Kopany – Sori) road. The County also has 5 airstrips namely: Kabunde, Mfangano, Rusinga, Otange and Otaro.

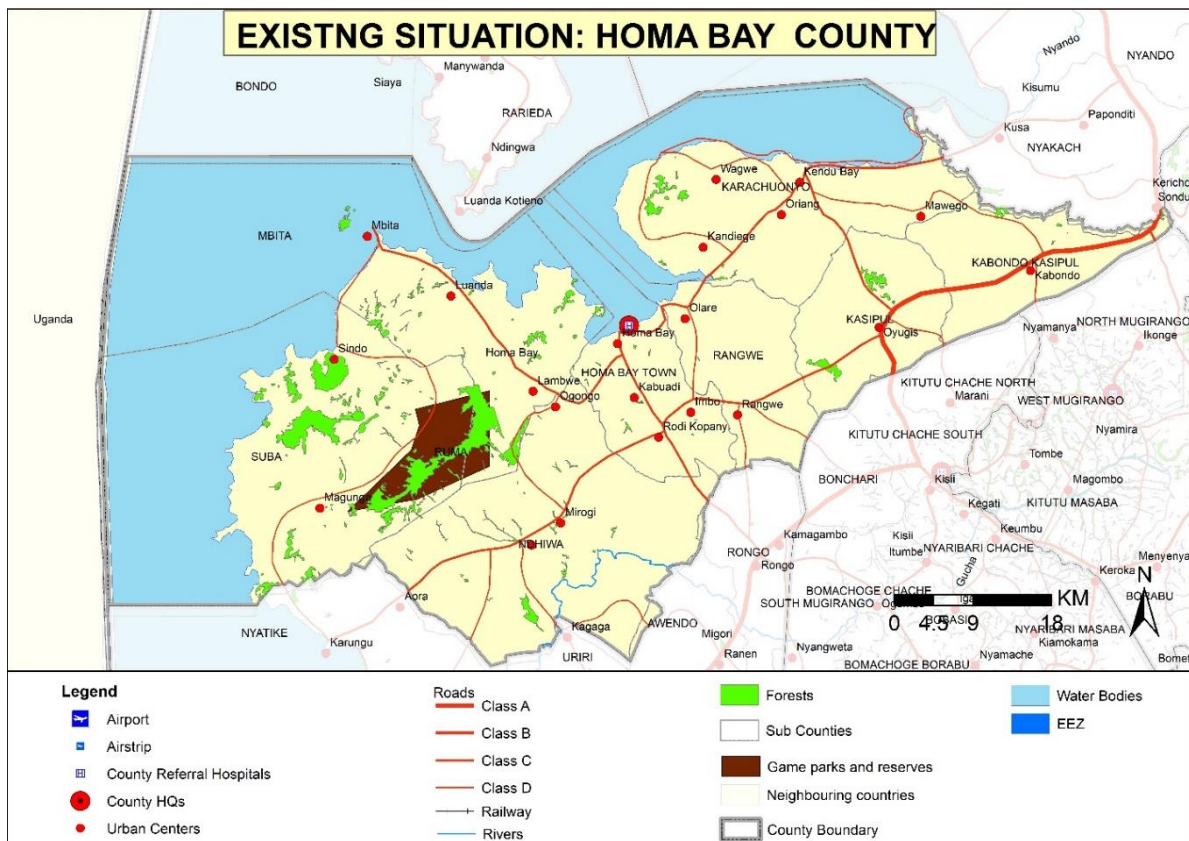
3.4.4 Public Utilities

To achieve a spatial and balanced regional development and meet demands of a growing population, there is need to develop and enhance economic infrastructure

such as water services, waste management, energy and ICT to provide the foundation for economic development.

Map 2 below shows the existing situation in HomaBay County.

Map2: Existing situation in Homabay County



Source: State Department for Physical Planning, 2022

3.5 Comparative Advantage

- a) Tourism Potential with potentials such as Ruma National Park and the presence of Lake Victoria which is the second largest fresh water lake with several beaches that contributes to county’s source of revenue and community will earn livelihood from the activities that would be taking place from there.
- b) The area is characterized by a good transportation network with great connectivity such as the five airstrips, the water transport connecting some areas like suba and Mbita and the various road networks that has improved its socio-economic status as the county.

- c) Existing manufacturing industries that has improved the well-being of the people in the county and around it.
- d) The County is endowed with natural water resources such as; a lake, rivers, that increases water supply, promotes aquaculture production and irrigation potential in the county.
- e)** Different agro ecological zones (7) suitable for growing of various crops including coffee, tea, Maize, millet, pineapples, sorghum, sunflower, tomatoes, green grams, tobacco, sugarcane, beans, pineapples, sisal, groundnuts among others which can be harnessed for agro processing and value additions.

DRAFT

4: DEVELOPMENT STRATEGIES AND POLICY GUIDELINES FOR HOMABAY COUNTY

4.1 County Specific Issues and Strategies

The National Spatial Plan provides strategies for spatial growth and development across the country. The strategies are aimed at providing a spatial expression to Kenya Vision 2030 and other sector policies.

This section seeks to provide strategies for spatial growth and development of the county by addressing the factors that prevent the county from achieving the intended goals and objectives. The development strategies discussed are aimed at enhancing the national impacts, optimizing use of natural resources, creating an intra-county balance and transforming rural areas. Specifically, the development strategies have been proposed to address the following aspects of the county's development agenda;

- Enhancing the national competitiveness
- Optimal use of land and other resources
- Balanced intra- county development
- Rural development in the county
- Urbanization

The following are detailed NSP sector-specific issues and strategies that apply to Homabay County:

Table 3:County Specific Issues and strategies

Strategy 1: Enhancing National Competitiveness		
Opportunities	Constraints	Strategies
<ul style="list-style-type: none"> ✓ Strategic location of the county which cuts across the agro-climatic zone (II and III) and presence of the A1 (Kisii-Kisumu), C20 (Homa Bay – Rongo), ✓ Favorable agro-climatic zone that supports a variety of agricultural production ✓ Membership in economic blocks; Lake Region Economic bloc 	<ul style="list-style-type: none"> ✓ Lack of appropriate agricultural support infrastructures ✓ Insufficient specialization in areas where we have comparative advantages ✓ Poor state and lack of connectivity of the roads ✓ Inadequate linkages with neighboring counties ✓ Poor quality of services and products ✓ Use of inappropriate farm inputs and technology ✓ Inadequate funds to manage the Bloc 	<ul style="list-style-type: none"> ✓ Plan and provide appropriate hierarchy of roads to increase internal and external linkages within the county ✓ Promote blue economy through exploitation of water resources in the County ✓ Encourage cooperation in planning within the Lake Region Economic Block to leverage the potential areas of collaboration with bloc members. ✓ Provide adequate and appropriate infrastructure ✓ Strengthen the service industries in the County
Strategy 2: Optimizing Land and Natural Resources		
Agriculture		
Opportunities	Constraints	Strategies

<p>Crop Farming</p> <ul style="list-style-type: none"> ✓ Agro-climatic zone (III) with good potential for agricultural production ✓ Potential growth of various types of agricultural produce (tea, maize, beans, cassava, sweet potatoes, vegetables, millet and sorghum among others) ✓ Irrigation potentials through rivers and the lake ✓ Existing research institutions in the neighboring Counties <p>Livestock keeping</p> <ul style="list-style-type: none"> ✓ The county has a potential livestock keeping hence production of some dairy milk <p>Aquaculture</p> <ul style="list-style-type: none"> ✓ Existing of fishing activities in the County ✓ Availability of natural fish in Lake Victoria 	<ul style="list-style-type: none"> ✓ Uneconomical fragmentation of land parcels due to human settlements ✓ Inadequate agricultural support infrastructure ✓ Slow adoption of technology and innovation ✓ Inadequate spatial frameworks to manage land uses ✓ Low uptake of appropriate technology and skills to produce, process, preserve and market agricultural products ✓ Use of inappropriate farm inputs and technology ✓ Inadequate equipment and technology to tap the fishing potential ✓ Inadequate capacity, skills and resources to fund, develop and operate ✓ Diminishing fish stock in the lake and re-ceding water levels ✓ Pollution of lake with water hyacinth 	<ul style="list-style-type: none"> ✓ Formulate appropriate policy framework to stop further fragmentation of agricultural land and explore land consolidation strategy ✓ Agricultural support infrastructure should be provided to match the function ✓ Plan and provide appropriate roads to increase internal and external linkages within the county ✓ Provide adequate and appropriate infrastructure ✓ Adopt modern methods and practices as well as technology in the whole range of agricultural capabilities in the county ✓ Formulation of policies to tap the capability and potentials of the county ✓ Undertake research on best fishing practices in the County ✓ Collaborate with other partners to enhance the irrigation potential ✓ Promote blue economy through exploitation of water resources in the County
--------------------------------------------------------------------------------------------------------------------------------------------------------------------------------------------------------------------------------------------------------------------------------------------------------------------------------------------------------------------------------------------------------------------------------------------------------------------------------------------------------------------------------------------------------------------------------------------------------------------------------------------------------------------------------------------------------------------------------------------------------------------------------------------------------------------	-----------------------------------------------------------------------------------------------------------------------------------------------------------------------------------------------------------------------------------------------------------------------------------------------------------------------------------------------------------------------------------------------------------------------------------------------------------------------------------------------------------------------------------------------------------------------------------------------------------------------------------------------------------------------------------------------------------------------------------------------------------------------------------	------------------------------------------------------------------------------------------------------------------------------------------------------------------------------------------------------------------------------------------------------------------------------------------------------------------------------------------------------------------------------------------------------------------------------------------------------------------------------------------------------------------------------------------------------------------------------------------------------------------------------------------------------------------------------------------------------------------------------------------------------------------------------------------------------------------------------------------------------------------------------------------------------------------------

		<ul style="list-style-type: none"> ✓ Control of fishing territories in the County – Mingingo island ✓ Enforce existing regulations on water pollution and regulate the abstraction of water
Environment (Conservation Area & Protection Area)		
Opportunity	Constraint	Strategy
<ul style="list-style-type: none"> ✓ Existing forest cover and agroforestry being practiced by the community ✓ Strong biodiversity conservation 	<ul style="list-style-type: none"> ✓ Soil erosion ✓ Encroachment of human settlements on hill tops and wet lands ✓ loss of vegetation ✓ Planting of blue gum on water banks ✓ Encroachment of human settlements on hill tops and wet lands 	<ul style="list-style-type: none"> ✓ Formulate policy frameworks to protect the forest areas ✓ Increase forest cover through afforestation, re-afforestation and agro forestry ✓ Sensitize the Planting of gravellia to replace blue gum on the water banks
<ul style="list-style-type: none"> ✓ Existing natural resources (wet lands, hilltops, forests, lake swamps) ✓ Existing policies and bodies dealing with environmental protection 	<ul style="list-style-type: none"> ✓ Drying up of water sources ✓ Deforestation ✓ Declining water quality from Pollution and extensive cultivation along river banks ✓ Encroachment by human settlement and activities ✓ Poor enforcement of the Environmental Acts 	<ul style="list-style-type: none"> ✓ Formulate policy frameworks to contain human settlement and hinder land use change within these areas ✓ Formulate policy frameworks to protect water catchment areas. ✓ Monitoring and evaluating human activities through evaluation of EIA Reports

	<ul style="list-style-type: none"> ✓ Uncontrolled sand harvesting and brick making. 	<ul style="list-style-type: none"> ✓ Control water abstraction/drying by sensitizing the planting of gravellia on along the water sources ✓ Flood mitigation measures put in place ✓ Preservation and conservation of marine biodiversity
Natural Resource		
Opportunity	Constraint	Strategy
<ul style="list-style-type: none"> ✓ Underground water reservoirs (the rivers, lakes) ✓ Availability of minerals such as Iron ores, Limestone, Oil, Soda ash, Zinc and Gold ✓ Support of diversification of the economy; manufacturing, processing 	<ul style="list-style-type: none"> ✓ Inadequate rain water harvesting technology ✓ Underutilization of existing natural resources ✓ Lack of research on existing minerals ✓ Lack of a regulatory framework in exploitation of underground water ✓ Inadequate technology and exploration infrastructure ✓ High costs of exploiting available natural resources 	<ul style="list-style-type: none"> ✓ Plan and provide appropriate storm water management infrastructure to optimize rain water harvesting ✓ Formulate policies to guide regulation of underground water exploitation ✓ Optimal utilization of the available natural resources ✓ Adopt sustainable exploitation of the available natural resource potential ✓ Invest in appropriate technology and infrastructure
Industrial		
Opportunity	Constraint	Strategy
<ul style="list-style-type: none"> ✓ High potential for agro, rural, mineral based and cottage industries ✓ Availability of cooperatives and Sacco's ✓ Availability of agro-processing materials and resources 	<ul style="list-style-type: none"> ✓ Poor linkage to the markets due to inadequate internal and external connectivity and support infrastructure ✓ Unexploited potential in the County 	<ul style="list-style-type: none"> ✓ Plan and provide appropriate hierarchy of roads to increase internal and external linkages within the county

	<ul style="list-style-type: none"> ✓ Low technological adaptation for value addition ✓ High cost of production ✓ High energy costs 	<ul style="list-style-type: none"> ✓ Prepare and implement an industrial master plan ✓ Provide appropriate technology to enhance value addition. ✓ Diversify energy production sources to reduce costs of production and enhance its reliability ✓ Invest in exploration of potential mineral reserves and adopt sustainable technology in brick and tile making ✓ Promote the formation of cooperatives and Sacco's to advance marketing and control of market prices ✓ Sensitive players in the sector on the aspect of IPR and enforce regulations on the same ✓ Promote assertive marketing campaigns for products both domestically and internationally
Tourism		
Opportunity	Constraint	Strategy

<ul style="list-style-type: none"> ✓ The existing tourist attraction sites (Ruma National Park, presence of beaches around Lake Victoria) ✓ High potential for culturism and agri-tourism ✓ Existing Agro, nature-based, cultural , attractions 	<ul style="list-style-type: none"> ✓ Over reliance on foreign tourism and few marketing ventures targeting non-traditional tourists ✓ Encroachment of human activities into the protected areas ✓ Little exploitation of tourism potential due to poor quality and inadequate infrastructure ✓ Poor marketing strategies to promote tourism ✓ Frequent conflict between the human and hippos/crocodiles along the shores of Lake Victoria 	<ul style="list-style-type: none"> ✓ Plan and provide appropriate tourism support infrastructure. ✓ Strict enforcement of the existing regulations for safeguarding protection areas ✓ Diversify the tourism products in the County ✓ Delegation and gazettment of delineated natural forests, wetlands and water towers ✓ Promote domestic tourism by providing incentives and subsidies ✓ Open up the underutilized sites so that they be operational ✓ Enhance security in tourism potential areas
Transport		
<ul style="list-style-type: none"> ✓ Strategic location of the county which cuts across the agro-climatic zones (I and III) and presence of the A1 (Kisii-Kisumu), C20 (Homa Bay – Rongo), ✓ Devolution leading to opening up of rural areas ➤ Existing road network and airstrips existing airstrips 	<ul style="list-style-type: none"> ✓ Poor implementation urban/rural transport policy ✓ Poor state and lack of connectivity of the roads and air transport ✓ Inadequate public transport system, Lack of NMT Infrastructure and inappropriate modal split 	<ul style="list-style-type: none"> ✓ Plan and provide appropriate hierarchy of roads to increase internal and external linkages within the county ✓ Plan and provide appropriate and adequate transport infrastructure and utilities

<p>➤ Adequate space for water transport along Lake Victoria</p>	<ul style="list-style-type: none"> ✓ Lack of coordination of activities by various agencies in charge of the sector ✓ Encroachment on road and airport reserves ✓ Inadequate linkages with neighboring counties ✓ Poor condition of the existing County roads ✓ High maintenance cost ✓ Urban environmental pollution ✓ Poor condition of the airports ✓ Inadequate harmonization and overlap in the many legislations that govern its activities ✓ Inappropriate harbours 	<ul style="list-style-type: none"> ✓ Prepare and implement sustainable mobility plans ✓ Enforce a regulatory standard requirement for all public transport service operators ✓ Improve the condition of all County roads to motorable standards ✓ Encourage use of green transport ✓ Delineate and enforce road and airport reserve extents ✓ Improve and expand existing airstrips ✓ Reconstruct/repair the harbours at Homabay, Kajimo, Mbita and Mfangano islands ✓ Provide adequate infrastructure to the harbors and jetties
<p>Public Utilities</p>		
<p>Water and Sanitation</p>		
<ul style="list-style-type: none"> ✓ Availability of water sources (rivers, lakes) ✓ Existing sewerage system in Nyamira 	<ul style="list-style-type: none"> ✓ Population increase resulting to high demand surpassing its supply (both water and waste management) ✓ Encroachment of human activities into catchment areas ✓ Unreliable access to clean and sufficient water 	<ul style="list-style-type: none"> ✓ Appropriate sanitation infrastructure including collection, disposal and treatment system be developed in all urban areas ✓ Effective enforcement of environmental and natural resources policies, laws and regulations

	<ul style="list-style-type: none"> ✓ Inadequate sewerage coverage and treatment facilities. ✓ Contamination of the available water (Water pollution) 	<ul style="list-style-type: none"> ✓ Water sources and catchment areas in the County should be protected and rehabilitated by creating buffers between these sources and other non-compatible land uses ✓ Investments in water harvesting technologies and storage facilities ✓ Improve access to clean and safe water ✓ Increase access to adequate sanitation facilities
Solid waste management		
<ul style="list-style-type: none"> ✓ Existing policies on waste management activities in the County 	<ul style="list-style-type: none"> ✓ Increased solid waste generation due to increased population pressure ✓ Poorly sited dumping sites ✓ Inadequate solid wastes management facilities 	<ul style="list-style-type: none"> ✓ Provide and upgrade the existing solid waste management facilities ✓ Explore other modes of solid waste management such as recycling of waste materials and waste-energy facilities. ✓ Promote the, Reduce, Reuse, Recycle (3Rs)
ENERGY		
<ul style="list-style-type: none"> ✓ Alternative energy sources 	<ul style="list-style-type: none"> ✓ Under exploitation of energy resources ✓ Lack of proper assessment and research on exploitation of green energy 	<ul style="list-style-type: none"> ✓ Encourage use of renewable energy ✓ Develop a policy to guide the exploitation and use of potential green energy sources

	<ul style="list-style-type: none"> ✓ Lack of relevant policy that guide the tapping and use of energy resources ✓ High cost of transmission of power to consumers 	<ul style="list-style-type: none"> ✓ Use of most appropriate energy consuming equipment to ensure efficient and productive use of energy ✓ Advocate and plan for expansion of electricity cover to other trading centers
ICT (Information and Communication Technology)		
<ul style="list-style-type: none"> ✓ Existing National Fiber Optic network (NOFBI) 	<ul style="list-style-type: none"> ✓ Poor access to ICT infrastructure ✓ High cost of ICT equipment ✓ Poor connection and reliability 	<ul style="list-style-type: none"> ✓ Improve on existing platforms such as Huduma center, BPO services and E-government ✓ Increase ICT relevant infrastructure ✓ Improve ICT adoption ✓ Mainstream ICT in all sectors to promote service delivery
Strategy 3: Balanced Intra-County Development		
<ul style="list-style-type: none"> ✓ Varied resource endowment including fertile soils, forests, favorable climatic conditions ✓ Establishment of the County under devolution ✓ Enabling policy and legal frameworks 	<ul style="list-style-type: none"> ✓ Weak linkages between rural and urban areas. ✓ Lack of a spatial framework ✓ Inadequate infrastructural facilities and services ✓ Uneven distribution of infrastructure ✓ Lack of the analysis of the potentials ✓ Under-exploitation of resources ✓ Ethicized governance system ✓ Corruption 	<ul style="list-style-type: none"> ✓ Establish strong rural urban linkages ✓ Promote investment in sustainable tourism ✓ Promote industrialization and value addition in less developed regions ✓ Promote irrigation activities for improved productivity ✓ Promote equal distribution of infrastructures

		<ul style="list-style-type: none"> ✓ Strengthen the existing economic zones in all the regions to promote processing and value addition of the various products
Strategy 4: Promoting Rural Development		
<ul style="list-style-type: none"> ➤ Resource endowment in rural areas (forest based, tourism based resources, agriculture based activities- rain fed and irrigated, mineral deposits and industries) ✓ Existing physical and social infrastructure ✓ Human resource (both skilled and unskilled) ✓ Training institutions such as Mawegos Technical training Institute ✓ Enabling policy and legal frameworks ✓ Devolution ✓ 	<ul style="list-style-type: none"> ✓ Weak rural-urban linkages ✓ Inappropriate transport infrastructure and utilities ✓ Inefficient and dilapidated infrastructure facilities and services ✓ Poor knowledge on how to use the resources ✓ Underutilization of the resources in the rural areas ✓ The dispersed nature of the human settlements, ✓ Slow adoption technology and innovation ✓ Fragmentation of land into uneconomical parcels due to population pressure 	<ul style="list-style-type: none"> ✓ Promote rural industrialization and value addition in less developed regions ✓ Plan and provide strong rural urban linkages ✓ Plan and develop appropriate transport and infrastructural facilities and services to support the exploitation of resources ✓ Sustainable utilization of available resources in the rural areas ✓ Formulate appropriate policy framework to stop further fragmentation of agricultural land and explore land consolidation strategy ✓ Modernize agriculture to promote high yield production ✓ Promote rural industrialization, tourism and agro-based industries in rural areas
Strategy 5: Urbanization		

<ul style="list-style-type: none"> ✓ Human resource (both skilled and unskilled) ✓ Enabling policy framework ✓ Existing infrastructure ✓ Devolution of governance ✓ Establishment of equalization of funds 	<ul style="list-style-type: none"> ✓ Weak rural-urban linkages ✓ Poor implementation of development plans and planning policies ✓ Poor enforcement of existing legislation on housing development and land use ✓ Rapid urbanization rates ✓ Inappropriate infrastructures and utilities ✓ Deteriorating infrastructure ✓ Poor waste management ✓ Land and governance issues. ✓ Proliferation of informal settlements ✓ Urban sprawl 	<ul style="list-style-type: none"> ✓ Strengthen the urban rural linkages to reduce the rate of urbanization ✓ Plan and provide appropriate and adequate transport infrastructure and utilities ✓ Plan, implement and enforce urban plans for the existing centres to control urban sprawl and promote urban containment. ✓ Provide services and infrastructure closer to the rural areas ✓ Enforce, harmonize and regularly review the existing legislative and regulatory instruments ✓ Promote the development of centres as per its potential and population ✓ Promote sustainable waste management ✓ Strengthen existing land management institutions
---------------------------------------------------------------------------------------------------------------------------------------------------------------------------------------------------------------------------------------------------------------	-------------------------------------------------------------------------------------------------------------------------------------------------------------------------------------------------------------------------------------------------------------------------------------------------------------------------------------------------------------------------------------------------------------------------------------------------------------------------------------------------------------------------------------	-----------------------------------------------------------------------------------------------------------------------------------------------------------------------------------------------------------------------------------------------------------------------------------------------------------------------------------------------------------------------------------------------------------------------------------------------------------------------------------------------------------------------------------------------------------------------------------------------------------------------------------------------------------------------------------------------------------------------------------------

Source: State Department for Physical Planning, 2022

4.2 National Spatial Plan Policy Guidelines and Measures for HomaBay County

The National Spatial Plan has stipulated policies to provide a foundation upon which to anchor the strategies enumerated therein. The primary aim is to inculcate discipline in the use of land and natural resources of the country thus stemming duplication and wastage of the resources.

This section seeks to provide the spatial policy guidelines and measures aimed at promoting the achievements of the objectives of the National Spatial Plan using its guidelines. They aim at enhancing global competitiveness and economic efficiency, optimizing the use of land and natural resources, promoting the regional balanced development and conservation of the environment.

These policies are supported by a wide range of measures which spell out the specific actions to be undertaken to actualize the policy intentions. The policies shall ensure that the county is globally competitive as an investment especially in emerging sectors such as the ICT. The policies shall also be implemented by the county government's agencies responsible for planning and development control as well as the authorities responsible for land administration.

The following are policies and measures specific to Homabay County.

Table 4: NSP Policy guidelines and measures for the County

No	Thematic Area	Policy Guidelines	Measures
1.	Resource Potential Growth regions	<ul style="list-style-type: none"> • Homabay to be developed based on its rain fed agriculture and livestock production potential 	<ul style="list-style-type: none"> • Infrastructure provision to support value addition initiatives and human settlement • Rural development through provision of infrastructure, agricultural sector development and related economic activities • Small and medium urban centers development • Development and rehabilitation of key infrastructure in underserved locations • Conservation of the environment and natural resources
2.	Enhancing National Competitiveness	<ul style="list-style-type: none"> • The selective concentration concept shall be adopted for the planning and location of urban based economic activities in the county to leverage on national competitiveness • The major urban areas shall be planned and provided with appropriate infrastructure to enhance efficiency and quality of life • Land and natural resources of the less developed areas shall be utilized optimally and sustainably 	<ul style="list-style-type: none"> • Provide appropriate infrastructure • Concentrate urban based economic activities in selected urban areas • Prioritize preparation of Spatial Development Plans • Develop and apply standards, guidelines and best practices that support a sustainable blue economy. National and County governments, shall develop and apply the global sustainability standards, guidelines and best practices.

		<ul style="list-style-type: none"> • The National Spatial Plan shall promote development of the Blue Economy and its integration into the economy of the Country • The efficiency of the transportation network shall be enhanced to take advantage of the strategic location and position of the county • Enhanced cooperation in spatial and economic planning with neighboring counties and regional blocs. 	<ul style="list-style-type: none"> • Establish and implement a framework for beach management that ensures public access as well as protection and conservation of the beaches. • Explore and sustainably exploit natural resources • Advance Technological Readiness through the provision of technological centers linked to different levels all over the country e.g. Science parks, Research laboratories etc. <ul style="list-style-type: none"> • Enhance the Livability Index for urban areas by providing quality social and physical infrastructure • Modernize agriculture • Value addition and improved marketing channels
3.	Modernizing Agriculture (Agro-climatic zone III)	<ul style="list-style-type: none"> • The agricultural use of land in high potential areas shall be intensified to increase productivity. • The fishing potential of the country shall be optimized to increase the food stock and export earning • The irrigation potential of the county shall be optimized by promoting investment in irrigation agriculture for high value crops 	<ul style="list-style-type: none"> • Prepare and implement County spatial plan and lower level plans to protect agricultural land • Provide transport connectivity and adequate inter and intra-road networks as well as other social and physical infrastructure • Prohibit and control change of use and subdivision for designated agricultural land. • Adopt modern agricultural methods

		<ul style="list-style-type: none"> • Agro climatic zones III shall be safeguarded against the threat of urbanization and land subdivision 	<ul style="list-style-type: none"> • Value addition to agricultural and livestock products. • Provide and increase access of appropriate infrastructure to support fishing industry
4.	Diversifying Tourism	<ul style="list-style-type: none"> • The county shall promote diversification of tourism by promoting the diverse products available in the county as well as adding more where possible. • Tourist attraction areas and sites shall be conserved and protected • Appropriate Tourism support infrastructure and facilities shall be provided • Appropriate transport infrastructure shall be provided to link the different tourist circuits, attraction areas and sites • Governance of the tourism sector shall be enhanced. 	<ul style="list-style-type: none"> • Prepare a county tourism development master plan which should focus on tourism sites zoning, product development and quality standard of tourism services. • Strictly regulate developments within the tourist attraction sites. • Improve infrastructure that supports tourism • Undertake research to identify more tourist attraction areas and sites, inventorize Agro tourism sites • Upgrade the existing county land and water transportation facilities.
5.	Managing Human Settlements	<ul style="list-style-type: none"> • Existing urban areas shall be subjected to strict development control to curtail encroachment on high potential agricultural land • Rural growth centres shall be rationalized and supported to act as central places and settlements clustered to free the rich agricultural land 	<ul style="list-style-type: none"> • Prepare and implement local physical development plans to define the urban growth limits for the principal urban centres • Plan and provide an integrated waste management system. • Incorporate disaster management and mitigation in planning of rural settlements.

		<ul style="list-style-type: none"> • Homa bay, Mbita and Oyugis urban areas shall be supported to enhance global competitiveness • Human settlements shall be developed in line with environmental and natural resources conservation • Provision of an efficient, reliable and effective transport system for human settlements • The management and governance of human settlements particularly the urban areas shall be improved. • Advocate for upgrading of the existing settlements and forestalling of new informal settlements • Peri-urban development shall be managed and controlled to contain urban growth within its limits and protect rural land uses. 	<ul style="list-style-type: none"> • Enforce strict regulations and justifications on development control processes. • Provide requisite infrastructure to support growth and development. • Promote sectors such as agriculture that have potential to stimulate rural development • Build institutional capacities of the urban areas management boards
6.	Conserving the Natural Environment	<ul style="list-style-type: none"> • All environmentally sensitive areas shall be protected and utilized in an sustainable manner • All government agencies shall integrate environmental concerns in policy formulation, resource planning and development processes 	<ul style="list-style-type: none"> • Prepare and implement integrated management plans for Environmental sensitive areas • Implement the National Climate Change Strategy and the National Climate Change Action plan

		<ul style="list-style-type: none"> • Community participation shall be mainstreamed in the protection and conservation of natural resources • National and County Physical Planning departments shall mainstream climate change into their planning processes 	<ul style="list-style-type: none"> • Involve and empower communities in the management of environmentally sensitive areas and promote environmental education and awareness • Adopt appropriate land use planning and watershed management practices for sustainable development • Promote sustainable waste Management and Pollution Control • Identify species which are rare and endangered with the aim of protecting them from extinction • Develop and implement harmonized regional plans for sustainable management of trans-boundary resources • Strengthen Environmental Governance and harmonize sectoral policies, legislation and regulations
7.	Integrating the National Transportation Network	<ul style="list-style-type: none"> • An integrated and functional transport system for the county and urban areas shall be developed • An efficient and affordable Mass Public Transport for all urban areas in the county shall be developed 	<ul style="list-style-type: none"> • Integrate land use with urban transport planning • Provide access and linkage, between county headquarter and sub-county headquarters and link them to national transportation corridors

		<ul style="list-style-type: none"> • An urban transport policy that facilitates an integrated, balanced and environmentally sound urban transport system in which all modes efficiently play their roles shall be developed • Environmental conservation shall be upheld in the planning, development and management of the transportation network • An efficient and affordable Mass Public Transport for all urban areas in the country shall be developed 	<ul style="list-style-type: none"> • Design and develop integrated transport networks that considers all different modes of transport • Adopt transit oriented development in the planning, design and development of all public urban transport • Establish a comprehensive transport management information system for all transport modes • Develop a public transport policy to regulate planning and management of public transport
8.	<p>Providing Appropriate Infrastructure</p>	<ul style="list-style-type: none"> • Safe, adequate, reliable and affordable electricity for both urban and rural settlements shall be provided • Expansion and improvement of water reticulation systems to facilitate the access to clean, safe, adequate, reliable and affordable water in human settlements shall be promoted • A globally competitive, accessible and affordable higher education, training and research facilities shall be promoted • A network of functional, efficient, safe, accessible and sustainable county health referral infrastructure shall be established 	<ul style="list-style-type: none"> • Build water kiosks and yard taps, develop water supply pipeline systems and sewers, and a comprehensive mapping of all water supplies systems in the informal settlements • Development of county rainwater harvesting strategy and water storage investment plans for all the villages and urban centres • Expansion of urban boundaries to be guided by investment in infrastructural services • Mainstream and enforce green energy options in the design of buildings • Increase access to electricity through upgrading and expansion of the national power transmission and distribution network

		<ul style="list-style-type: none"> • Appropriate, quality, efficient and cost effective ICT infrastructure in both rural and urban areas shall be promoted • The expansion of sewerage systems and waste management facilities shall be promoted to improve sanitation in human settlements • Sporting infrastructure shall be planned, developed, maintained and the existing rehabilitated to promote sports development 	<ul style="list-style-type: none"> • Restore all the water towers. • All universities and other tertiary institutions to invest in research, technology and innovation • Develop and upgrade physical infrastructure in all education institutions to increase their capacity • Strengthen outreach systems for provision of health services to marginalized and vulnerable population • Provision of quality emergency health services at the point of need • Develop and upgrade ICT Infrastructure to cover all the rural and local growth centres • Mainstream use of ICT in all levels of government and the private sector (e-government) • All spatial plans to make provision for development of sewer systems and treatment works and solid waste disposal sites • Adopt appropriate technology to facilitate reduction, recycle and reuse of waste (3R's) • Establish County Sports Talent Centers to nurture and develop sports talents in the county
--	--	-------------------------------------------------------------------------------------------------------------------------------------------------------------------------------------------------------------------------------------------------------------------------------------------------------------------------------------------------------------------------------------------------------------------------------------------------------------	------------------------------------------------------------------------------------------------------------------------------------------------------------------------------------------------------------------------------------------------------------------------------------------------------------------------------------------------------------------------------------------------------------------------------------------------------------------------------------------------------------------------------------------------------------------------------------------------------------------------------------------------------------------------------------------------------------------------------------------------------------------------------------------------------------------------------------------------------------------------------------------------------------------------------------------------------------------------------------------------------------------------------------------------------------------

9.	Towards a Rapidly Industrializing county	<ul style="list-style-type: none"> • The cluster development strategy shall be promoted to focus on proximity to raw materials and markets of region specific products • Specific sites for industrial development shall be identified, planned and serviced with the appropriate infrastructure • Adequate and affordable energy supply for the industrial sector shall be provided 	<ul style="list-style-type: none"> • Prepare and implement an industrial master plan • Provide an integrated, efficient, reliable and sustainable transport and energy infrastructure • Promote value addition in processing of local produce • Integrate the industrialization process and environment conservation • Adopt renewable energy generation programmes • Promote the adoption of energy efficient technologies to lower the demand for energy
----	-------------------------------------------------	-----------------------------------------------------------------------------------------------------------------------------------------------------------------------------------------------------------------------------------------------------------------------------------------------------------------------------------------------------------------------------------------------------------------------	------------------------------------------------------------------------------------------------------------------------------------------------------------------------------------------------------------------------------------------------------------------------------------------------------------------------------------------------------------------------------------------------------------------------------------------------------------------------------------------------------------------------

Source: State Department for Physical Planning, 202

Map 3 provides a spatial representation of the policies proposed for Homabay County.

Map 3: NSP Proposals for Homabay County



Source: State Department For Physical Planning, 2022

5. IMPLEMENTATION AND ADOPTION OF THE GUIDELINES

5.1 Overview

The implementation framework identifies activities and further ties them with responsible actors, resources and timeframes adequate for their execution. It constitutes a deliberately established method, means or system of ensuring that the policies, strategies and measures outlined in the guidelines are continuously and consistently executed to achieve their objectives.

To effectively implement the guidelines, the various sectors, actors and levels of planning have been identified and have to work together and the mandate of the sectors at the National and County levels of planning have to be integrated.

5.2 Implementation Approaches

The County Specific Guidelines will be implemented through various approaches including:

1. Preparation of spatial plans to integrate and conform to the proposals of the County Guidelines. The plans include:
 - Inter-County Physical and Land Use Development Plans for Metropolitan regions, conservation zones, river basins, water towers, coastal ecosystems, trans-boundary resource areas and transport corridors, among others.
 - County Physical and Land Use Development Plans.
 - Local Physical and Land Use Development plans for Cities, Urban areas, special area plans, subject plans and detailed neighbourhood plans, among others.
 - Sectoral plans
2. Integration of the guideline policies, strategies and measures into the County sector plans, programs and projects. Ministries, Departments and Agencies (MDAs), County and National Departments identified in the plan to administer the policies, strategies and measures are required to translate them into action plans, programmes and projects and to include them in their subsequent sector plans.
3. Formulation of policies, regulations and standards to guide development control

5.3 Implementation Framework

The implementation of the various policies, strategies, measures, programmes and projects under these Guidelines will involve a wide range of actors. It will require a coordinated approach and partnership between the National and County Governments and non-state actors. It may require re-engineering of institutions and a number of actors to undertake the implementation through a harmonized approach.

The National Spatial Plan identified a multi-leveled framework for implementation of the plan that incorporates all levels of actors. In this regard, the institutions identified in the NSP to undertake implementation of the plan at County-level shall also be mandated to ensure implementation of this Guidelines.

The following are the Institutions mandated to ensure implementation of the County Specific guidelines;

5.3.1 County Physical Planning Committee

The role of the County Planning Committee shall be to ensure aspirations of the guidelines are articulated in preparation of the County Spatial Plans, County Integrated Development Plans and Local Physical and Land Use Development Plans.

The composition of this committee consists of;

- i. The Governor who will be the Chairperson,
- ii. the Deputy Governor,
- iii. the County Executive Committee Members from various sectors
- iv. Directors from various relevant County Departments including Lands and Physical Planning, Economic planning, Agriculture, Industrialization, Tourism, Environment, Transport and Infrastructure

The functions of the committee include;

- 1) To promote effective integration between physical, economic and sectoral planning within the framework of county development policies.
- 2) To provide policy guidance for the implementation of strategic spatial projects
- 3) To ensure that the guidelines policies and measures are mainstreamed in the various county plans.
- 4) To mobilize resource for implementation of the Guidelines.

5.3.2 County Planning Unit (CPU)

The technical Unit shall provide technical support to the various implementing County departments on issues relating to physical planning.

The CPU shall;

- i. Monitor the Implementation of the guidelines.
- ii. To disseminate components of the guidelines to the various county departments.
- iii. Update the County Physical Planning Committee on a regular basis on the implementation of the guidelines.

The County Director of Physical Planning shall be responsible for preparation of an annual state of planning report which shall among other things appraise the status of implementation of the guidelines.

5.3.3 National Land Commission

The National Land Commission shall play its oversight role in land use planning to ensure efficient implementation of the NSP and the guidelines. Other functions of the Commission in the implementation of the NSP and the guidelines include the following:

- To formulate mechanisms and parameters for monitoring and overseeing land use planning.

- i. To ensure that relevant planning authorities carry out their functions as required by law.
- ii. To make recommendations for improvements of the planning systems in the county.
- iii. To mobilize resources to support physical/land use planning.

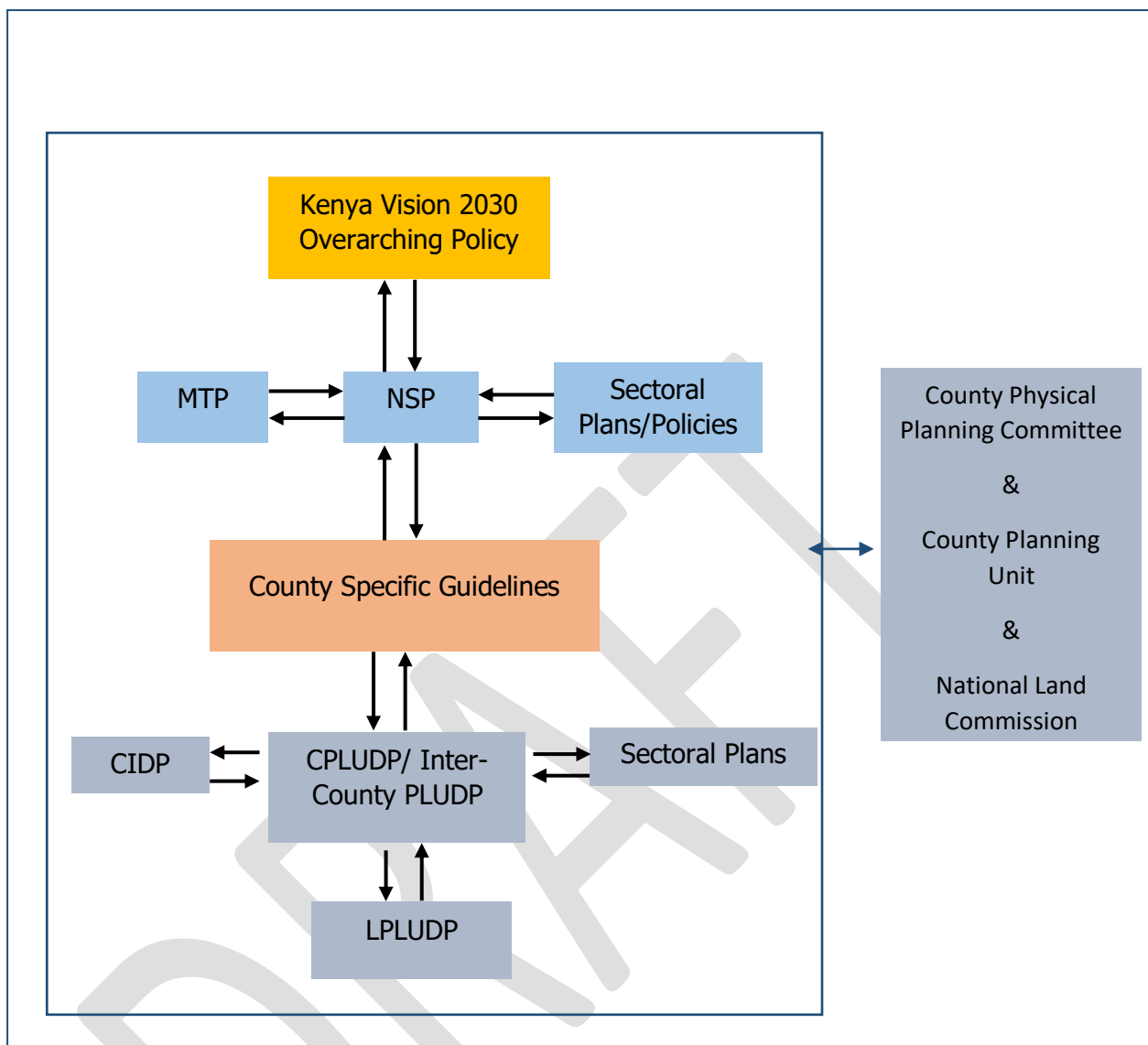
5.4 Monitoring and Evaluation

Implementation of the guidelines will be monitored and evaluated to measure both outputs and outcomes and ensure that the intended actions are implemented in a timely manner. To facilitate attainment of the objectives of the guidelines, performance indicators will be developed by the County Physical Planning Department for efficient monitoring. Periodic reports will be prepared in relation to progress being made in their implementation.

The graphic below illustrates the implementation structure for County Specific guidelines.

DRAFT

Figure 4: Implementation structure of the guidelines



Source: State Department for Physical Planning, 2022

5.5 Conclusion

The application of these guidelines will be undertaken by a number of actors and hence the need for a coordinated approach. The lead agency will be Homabay County Government which will be responsible for implementing various county specific initiatives proposed by the guidelines.

The National Government, County Government of Homabay, the private sector and the general public will be critical in actualizing the objectives of these guidelines. The County Physical Planning Committee shall develop a communication strategy to enhance the synergies.

The National Department of Physical Planning shall undertake sensitization, training and capacity building of the County Government and National Government institutions and agencies that will be involved in the implementation of these guidelines. Special attention will be given to the County physical planning units, as they will be expected to provide technical expertise in the implementation of the County specific policies and strategies.