



# NATIONAL SPATIAL PLAN IMPLEMENTATION GUIDELINES FOR KAKAMEGA COUNTY



MINISTRY OF LANDS AND PHYSICAL PLANNING

DEPARTMENT OF PHYSICAL PLANNING

@ 2022

## FOREWORD

The Constitution of Kenya apportions responsibility of planning to both National and County Governments. Under the Fourth Schedule on distribution of functions, Part 1 (21) and (32) mandates the National Government with the responsibility of formulating general principles of land planning, co-ordination of planning by the Counties, capacity building and technical assistance to the Counties. On the other hand, Part 2(8) allocates the function of County planning and development to County Governments. It is under these provisions that the County specific guidelines have been prepared.

The Department of Physical Planning prepared the National Spatial Plan (NSP) in response to the Kenya Vision 2030 to guide the spatial development of the country over a period of 30 years beginning in 2015.

It aims at achieving an organized, integrated, sustainable and balanced development of the country by providing a framework for better national organization and linkages between different activities within the national space.

To implement the Plan, the Counties are expected to play a key role by mainstreaming strategies, policies, and measures identified in the NSP into the County spatial planning systems.

The guidelines have identified planning policies, strategies, and measures that Plans at the County level are expected to mainstream and propagate. The policies address among others, the protection of rich agricultural land, development imbalances, conservation of environmentally sensitive areas, urban containment, and promotion of industrial development.

The guidelines provide direction on the existing potentials, the opportunities, the constraints/challenges inhibiting harnessing of the potentials, the strategies to apply, respective policies required, and the necessary measures to achieve optimal productivity, sustainability, efficiency and equity in the use of county land resources.

The guidelines are an opportunity on how best to refocus, vary and complement areas that require different approaches responding to country-specific needs and promote the livelihoods of their people, while contributing to the national aspirations of vision 2030, regional objectives of the Africa Agenda 2063, and international targets of

sustainable development. The refocusing will also be handy in reviewing and making decisions on NSP which is due for review in 2025.

These guidelines are therefore a tool for enhancing this critical path and provide a direction for development planning by the Counties as they discharge their responsibility of preparing county and local physical and land use development plans. The guidelines will also ensure that the County Integrated Development Plans conform to the proposed County specific policy guidelines and measures.

DRAFT

## PREFACE

The National Spatial Plan(NSP) recognizes that Kenya is greatly endowed with massive and diverse resources distributed over the national space that require an integrated and coordinated approach for optimal productivity and sustainability.

The County Specific Guidelines have been derived from the National Spatial Plan and provide a planning framework for the integration of the NSP into the county spatial planning system. They are clear statements linking the National Spatial Plan to Inter-County, County and lower-level Physical and Land Use Development Plans and provide clarification on the anticipated sustainable development outcomes of implementing the Plan.

The County Government will adopt, develop and implement their plans based on the policies, strategies, and measures articulated in the guidelines. The realized county plans are expected to guide, harmonize and facilitate development within the county, hence contributing to the overall implementation of the NSP.

The guidelines also form an efficient compass and monitoring tool for National and County Governments to jointly pursue sustainable planning and appropriate implementation mechanisms.

For the county to be nationally competitive, there is need to balance development and promote optimal utilization of land and land-based resources as well as cultivate an integrated approach in addressing the intertwined challenges of regional imbalances/inequalities, rural development, underutilization of the available resources, uncontrolled urbanization, environmental degradation and inefficient transportation. It is imperative therefore, to prioritize the implementation of this strategic document so as to promote balanced development and competitiveness across the county

## EXECUTIVE SUMMARY

The County Specific Guidelines seek to facilitate the implementation of the National Spatial Plan by outlining policies, strategies and measures to guide County spatial planning and development and promote optimal productivity, sustainability, efficiency and equity in the use of land. They provide a framework for preparation of lower level Plans including Inter-County, County and Local Physical and Land Use Development Plans.

The disconnect between National and County Spatial Planning and development has resulted in uncoordinated and unbalanced development, therefore creating a need for a clear structure that links National, Regional and Local planning and development. This is achievable through integration of the policies, strategies and measures proposed by the guidelines into County Spatial Plans, Programs and Projects, to tackle challenges of unbalanced regional development, urbanization, national competitiveness and unsustainable use of land and natural resources.

The County Specific Guidelines are organized into five chapters detailing various facets. Chapter one provides an overview, purpose and justification of preparation of the guidelines. It also outlines the objectives that the guidelines intend to achieve and details the preparation process as well as intended users. This chapter highlights the key principles that form the basis for preparation of lower level plans including public participation, liveability, sustainable development, urban containment, smart urban growth among others.

Chapter two details the legal and policy provisions that the guidelines are anchored upon. They include, among others, The Constitution of Kenya, 2010, The Physical and Land Use Planning Act No.13 of 2019, County Government Act, 2012, Environmental Management and Coordination (Amendment) Act, 2015, Sessional Paper No. 01 of 2017 on National Land Use Policy and Sessional Paper No. 10 of 2012 on Kenya Vision 2030.

The third chapter analyses the county profile, detailing its location, size, bio-physical characteristics, socioeconomic status and the County's comparative advantage in

relation to others. The locational context provides information on the geographical position and bordering Counties while the biophysical context discusses the topography, hydrology and climate. The socioeconomic status indicates key economic drivers of the County and its population and demographic structure.

Chapter four presents the County specific issues and proposes development strategies to promote national competitiveness, optimal use of land and resources, rural development, balanced intra-county development and urbanization. Additionally, it provides policy guidelines and measures for County advancement.

The final chapter five focuses on implementation and adoption of the guidelines. The implementation framework identifies institutions, County development programs and projects, and further ties them with responsible actors, resources and timeframes for effective execution. It proposes a framework for ensuring that the outlined policies, strategies and measures are adequately implemented.

DRAFT

## TABLE OF CONTENTS

1	INTRODUCTION.....	10
1.1	Background.....	10
1.2	Purpose.....	10
1.3	Objectives.....	11
1.4	Scope.....	11
1.5	Justification.....	12
1.6	Application of the Guidelines.....	13
1.7	Process of preparing the Guidelines.....	13
1.8	Targeted users of the Guidelines.....	14
1.9	Key Principles.....	15
2	THE POLICY, LEGAL AND PLANNING FRAMEWORK FOR THE GUIDELINES.....	17
2.1	Constitutional context.....	17
2.2	Policy Context.....	17
2.2.1	Sessional Paper No. 10 of 2012 on Kenya Vision 2030.....	17
2.2.2	Sessional Paper No. 01 of 2017 on National Land Use Policy.....	17
2.3	Legal context.....	18
2.3.1	The Physical and Land Use Planning Act No. 13 of 2019.....	18
2.3.2	County Governments Act, 2012.....	18
2.3.3	Urban Areas and Cities (Amendment) Act, 2019.....	18
2.3.4	Environmental Management and Coordination (Amendment) Act, 2015.....	18
2.3.5	National Land Commission Act, 2012.....	19
2.4	Planning Context.....	19
2.4.1	National Spatial Plan (NSP).....	19
2.4.2	NSP linkage to other plans.....	20
3	COUNTY PROFILE.....	22
3.1	Overview.....	22
3.2	Location and Size.....	22
3.3	Bio-physical context.....	24
3.3.1	Topography.....	24
3.3.2	Water resources.....	24
3.3.3	Ecological conditions.....	24
3.3.4	Forests.....	24
3.3.5	Climatic conditions.....	24
3.3.6	Mining.....	25

3.3.7	Tourism .....	25
3.4	Social-Economic Status .....	25
3.4.1	Demography .....	25
3.4.2	Economic Activities .....	26
3.4.3	Physical Infrastructure .....	26
3.4.4	Public Utilities .....	27
3.5	The County's Comparative Advantage .....	27
4	DEVELOPMENT STRATEGIES AND POLICY GUIDELINES FOR KAKAMEGA COUNTY .....	29
4.1	County Specific Issues and Development Strategies .....	29
4.1	National Spatial Plan Policy Guidelines and Measures for Kakamega County 37	
5	IMPLEMENTATION AND ADOPTION OF THE GUIDELINES.....	46
5.1	Overview .....	46
5.2	Implementation Approaches .....	46
5.3	Implementation Framework.....	47
5.3.1	County Physical Planning Committee .....	47
5.3.2	County Planning Unit (CPU).....	48
5.3.3	National Land Commission.....	48
5.4	Monitoring and Evaluation .....	48
5.5	Conclusion.....	50

## List of Maps

Map 1: Location of Kakamega County .....	23
Map 2: The Existing Situation in Kakamega County .....	28
Map 3: NSP Proposals for Kakamega County.....	45

## List of Figures

Figure 1: The Scope of the Guidelines .....	12
Figure 2: Policy Focus of the NSP .....	20
Figure 3: NSP Linkage to other Plans.....	21
Figure 4: Implementation structure of the guidelines.....	49

## List of Tables

Table 1: Targeted Users of the Guidelines .....	14
Table 2: Population Projection to the year 2045.....	25
Table 3:County Specific Issues and Development Strategies .....	30
Table 4: NSP Policy guidelines and measures for the County .....	38

# **1 INTRODUCTION**

## **1.1 Background**

The County Guidelines set out policies, strategies and measures that will guide the long-term spatial development of the county for a period of 30 years. They cover the entire county and defines the general trend and direction of its spatial development.

The guidelines have been developed in line with the four thematic areas as outlined in the NSP. They provide a guide to the Planning Authority at the county on how to incorporate the NSP policies, strategies and measures during the preparation of County Spatial Plans and other lower level plans like the Local Physical and Land Use Development Plans consequently implementing the NSP.

The NSP County Specific implementation guidelines summarize the County's existing potentials and opportunities, the constraints (challenges) inhibiting harnessing of the potentials, the applicable strategies and respective policies required, and the necessary measures to achieve optimal productivity, sustainability, efficiency and equity in the use of the county land resources. They act as a reference point

## **1.2 Purpose**

The purpose of the County Specific Guidelines is to provide a planning framework for mainstreaming of the National Spatial Plan to the County spatial planning system.

The guidelines are intended to assist the County enhance the implementation of the NSP by linking the proposed county specific policies, strategies and measures into the County plans, programs and projects while putting measures in place for achieving them. The guidelines inform preparation of various County Physical Plans such as the County Physical and Land Use Development Plans.

For optimal implementation of these plans, a County Integrated Development Plan (CIDP) is essential since it is a sectoral and budgetary based plan that draws its implementation programs and projects from the County Physical Plans.

### **1.3 Objectives**

The guidelines provide policies, strategies and measures to deal with challenges of regional imbalances/inequalities, rural development, underutilization of the available resources, urbanization, environmental degradation and inefficient transportation.

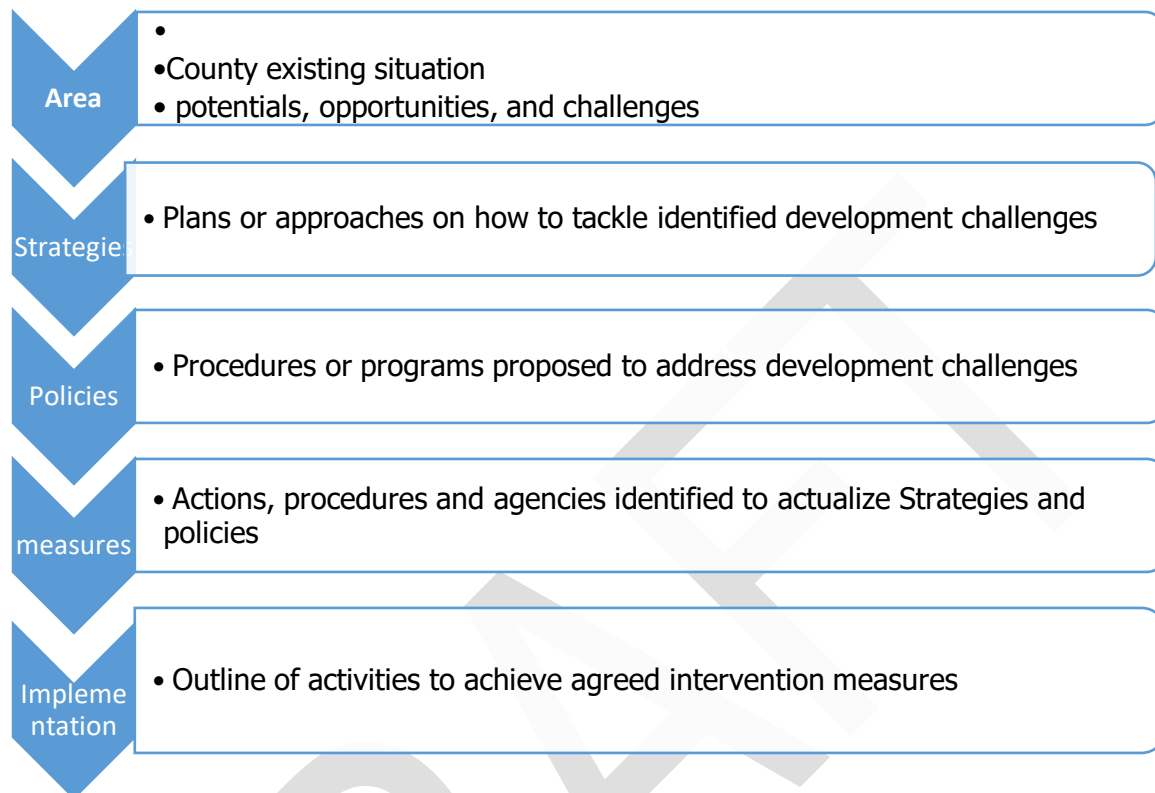
Specifically, the objectives are;

1. To sensitize the County on the provisions of the NSP
2. To promote synergy between National and County planning
3. To guide the County, implement the NSP
4. To identify the roles of the different actors in the implementation of the NSP.

### **1.4 Scope**

The guidelines comprise policies, strategies and measures specific to Kakamega County covering approximately 3051.3 km<sup>2</sup>. The guidelines highlight the County's existing potentials and opportunities, the constraints (challenges) inhibiting harnessing of the potentials, the applicable strategies and respective policies required, and the necessary measures, actions, approaches, plans and procedures prescribed to achieve optimal productivity, sustainability, efficiency and equity in the use of the county's land resources and an outline of activities to execute agreed interventions as captured in the National Spatial Plan, as indicated in Figure 1 below. These guidelines are effective up to the year 2045.

**Figure 1: The Scope of the Guidelines**



**Source: State Department for Physical Planning, 2022**

### **1.5 Justification**

Since the approval and launch of the NSP, its implementation has been undertaken in an uncoordinated manner hence the guidelines will provide a standardized approach for all Counties. The guidelines are also an important tool for tracking and evaluating implementation of the NSP both at National and County levels.

The preparation of County Spatial Plans and other lower-level plans which is a mandate of Counties has been slow and, in some Counties, has not begun at all. These guidelines are therefore a quick reference in preparation of county plans and for some Counties to help optimize land in the absence of these plans.

## **1.6 Application of the Guidelines**

The guidelines will be used or applied in the following ways to achieve a more sustained and coordinated development of the County;

- To effectively coordinate planning between the National and the County Government;
- To improve the County Government's capacity to formulate, coordinate and implement integrated development policies, strategies, measures, programs and projects to address spatially unbalanced development;
- To inform strategic infrastructure policy and public investment decisions which support the achievement of balanced development in the County;
- To strengthen County inter-sectoral coordination within a spatial framework and provide the private sector with a clear context in which they can make investment decisions;
- To optimize the use of land and natural resources by providing a framework for making sustainable locational choices for sustainable development and conservation of land productivity in the County.

## **1.7 Process of preparing the Guidelines**

The process involved reviewing the National Spatial Plan and identifying key issues, spatial policies, development strategies and measures specific to Kakamega County. These key issues, spatial policies, development strategies and measures will be realized through preparation of County and other lower-level plans.

Research was undertaken on various thematic areas to enrich the County specific issues and development strategies as well as policy guidelines and measures/interventions. Further, preparation of the guidelines considered the constitutional, policy and legal provisions on physical and land use planning. Expert opinion was sought on the identified issues, policies, measures and strategies for implementation viability.

The preparation of the guidelines was identified as one of the implementation tools of the NSP, in which key NSP issues, policies, strategies and measures were translated into specific action plans, programs and projects at the County level.

## 1.8 Targeted users of the Guidelines

These Guidelines have diverse consumers and application depending on prevailing circumstances and actors as demonstrated in Table 1 below:

**Table 1: Targeted Users of the Guidelines**

User	Application
County Executive Committee Member in charge of Physical and Land Use Planning	<ul style="list-style-type: none"> <li>• Preparation of county and lower-level plans</li> <li>• Linkage of planning structures</li> <li>• Quality control of the various county plans</li> <li>• Formulate county planning policies and strategies</li> <li>• Establish county specific planning institutions</li> <li>• Coordinate and implement county plans and policies</li> </ul>
The County Director of Physical and Land Use planning	<ul style="list-style-type: none"> <li>• Advising the county government on the impact of the county specific guidelines to the county</li> <li>• Preparation of County physical and land use development plans and other lower level plans</li> <li>• Formulating County physical and land use planning policies, guidelines, strategies, and standards;</li> <li>• Issuance of development permission and other development control instruments under The Physical and Land Use Planning Act, 2013.</li> </ul>
Licensed physical and land use planners both in public and private sectors	<ul style="list-style-type: none"> <li>• Prepare, coordinate and implement spatial plans</li> <li>• Quality control of plans and consultancy services</li> <li>• Formulate policies, strategies and development guidelines</li> <li>• Dispute resolution</li> </ul>
County assembly	<ul style="list-style-type: none"> <li>• Approval of strategic sectoral budgets such as planning</li> <li>• Vetting of various County specific plans</li> <li>• Formulation and passing of County planning legislation</li> </ul>

	<ul style="list-style-type: none"> <li>• Enhance capacity to oversee the executive on spatial planning</li> </ul>
Ministries, Departments and Agencies	<ul style="list-style-type: none"> <li>• Mainstreaming relevant NSP policies, programs and projects</li> <li>• Allocation of resources to priority areas,</li> <li>• Strengthening linkages with spatial planning in resource management</li> </ul>
The National Land Commission (NLC)	<ul style="list-style-type: none"> <li>• Oversight role in land use planning to ensure efficient implementation of the NSP</li> <li>• Ensure relevant planning authorities carry out their functions as required by the law</li> </ul>
Practitioners in the built environment	<ul style="list-style-type: none"> <li>• Advance NSP relevant policies, programs and projects hence optimization of land resource</li> <li>• Appreciate sectoral Linkages to spatial planning</li> <li>• Facilitate incorporation of the policies, strategies and measures into, County specific plans</li> </ul>
Community, developers and investors	<ul style="list-style-type: none"> <li>• Comprehend the County priority sectors and County Plans and policies</li> <li>• Complement County spatial planning and implementation measures</li> <li>• Making informed investment decisions</li> </ul>
Development partners	<ul style="list-style-type: none"> <li>• Reference frame for selecting and funding spatial planning activities</li> <li>• Understand planning linkages and implementation</li> <li>• Informed development decisions</li> </ul>
Training institutions	<ul style="list-style-type: none"> <li>• Compliment the curriculum for training of spatial planners</li> <li>• Understand the planning procedures and processes</li> </ul>

## 1.9 Key Principles

The principles, as applied in the NSP, should guide and form the basis upon which the lower-level physical and land use plans are prepared. Further the principles

should ensure sustainable, coordinated, and realistic development. They include the following:

**1. Effective Public participation/engagement:** All plans shall be prepared in a participatory and consultative manner with relevant stakeholders and sectoral actors.

**2. Urban containment/Compact cities:** Local plans shall strive to limit and control urban growth within the set urban boundaries to protect rich agricultural land, mitigate urban sprawl and reduce cost of infrastructural provision.

**3. Livability:** The planning of urban areas shall enhance the livability index in the area of housing, environment, transportation, health, and social engagement. The urban areas must be economically viable, socially inclusive and ecologically sustainable.

**4. Smart and green urban growth:** Plans shall promote sustainable use of energy, creation of green spaces, reduce the need for car travel, and promote use of local materials, support businesses, protection of heritage and creation of unique character.

**5. Sustainable development:** Balancing social, economic and environmental dimensions of development and catering for current and future generations.

**6. Promotion of ecological integrity:** Plans shall promote the protection and conservation of environmentally sensitive areas.

**7. Promote public transportation:** Favor public transportation over private transport to ensure efficiency and functionality of urban places.

**8. Balanced development:** Plans to ensure there/ is balanced development in the County to cure inequalities.

## **2 THE POLICY, LEGAL AND PLANNING FRAMEWORK FOR THE GUIDELINES**

### **2.1 Constitutional context**

The formulation of these guidelines took into account the Constitution of Kenya 2010 aspirations and Principles. Article 66 of the Constitution of Kenya 2010 gives the State powers to regulate use of any land and property in the interest of land use planning among others. The guidelines are therefore within and in response to the aspirations, values and principles as provided for in the constitution.

### **2.2 Policy Context**

#### **2.2.1 Sessional Paper No. 10 of 2012 on Kenya Vision 2030**

Kenya Vision 2030 is the overarching national development framework which all plans should be aligned to. The preparation of all spatial plans should take cognizance of the aspirations, foundations and development concepts of the vision. The preparation of the first National Spatial Plan is identified in Kenya Vision 2030 as a flagship project and is regarded as one of the foundations for socio-economic transformation. Hence the need for linkage between national planning and county planning which will be achieved through mainstreaming NSP requirements into CSPs and other lower-level plans by preparing NSP county specific guidelines to implement the NSP at lower levels.

#### **2.2.2 Sessional Paper No. 01 of 2017 on National Land Use Policy**

The policy was formulated to address the various challenges related to land use and ensure efficient, productive and sustainable use of land. The main goal of the policy is to provide legal, administrative, institutional and technological framework for optimal utilization and productivity of land related resources in a sustainable and desirable manner at national, County and community levels.

The policy recommends the preparation of a National Spatial Plan to provide an integrated framework for the development of the country including guidelines for sustainable rural and urban planning management. The policy also provides for the preparation of planning guidelines, policies and standards to be observed by County

Governments and other sectoral agencies within the frameworks of approved physical and land use development plans. These guidelines have been prepared on this basis and they are to be observed by counties in the implementation of the National Spatial Plan.

## **2.3 Legal context**

Various Acts of Parliament are in place to provide the legal framework for the implementation of the mandate provided for in Article 66 of the Constitution. The Physical and Land Use Planning Act, 2019, The Urban Areas and Cities (Amendment) Act, 2019, County Governments Act No. 17 of 2012, The Land Act No. 6 of 2012, National Land Commission Act No. 5 of 2012 among others. The NSP County specific guidelines are prepared in this context and meet this criterion.

### **2.3.1 The Physical and Land Use Planning Act No. 13 of 2019**

This is the overarching statute that provides for formulation of both National and County physical and land use planning policies, guidelines and standards. The Act further provides for administration, types, content, process and approval of the various types of Physical and Land Use Development Plans.

### **2.3.2 County Governments Act, 2012**

This statute mandates County Governments to carry out the planning function at the county level. The guidelines support preparation of the various county level plans that meet the recommended quality and standards.

### **2.3.3 Urban Areas and Cities (Amendment) Act, 2019**

The statute provides for classification of urban areas and cities, their governance and management, and for integrated development planning. The guidelines are a basis for preparation of these lower-level plans.

### **2.3.4 Environmental Management and Coordination (Amendment) Act, 2015**

The Act provides for the establishment of an appropriate legal and institutional framework for the management of the environment as well as guidelines relating to environmental management and prevention or abatement of environmental

degradation. The guidelines take cognizance of this Act and will be implemented within the framework

### **2.3.5 National Land Commission Act, 2012**

The Act mandates the National Land Commission with the management and administration of public land on behalf of the National and County Governments and to monitor and oversight physical and lands use planning in the country. The guidelines fall within the ambit of this statute and will facilitate their oversight responsibilities.

## **2.4 Planning Context**

### **2.4.1 National Spatial Plan (NSP)**

The National Spatial Plan (NSP) covers the whole country encompassing the exclusive economic zone. The NSP outlines policies and strategies geared towards influencing desired future distribution and organization of human activity outlined in Vision 2030 and sectoral policies and plans. It aims at achieving economic efficiency and balanced development. The various County Spatial Plans should be aligned to the policies outlined in the NSP as demonstrated in Figure 2 below.

**Figure 2: Policy Focus of the NSP**



**Source: National Spatial Plan, 2015-2045**

To actualize the NSP, a comprehensive implementation strategy has been proposed that embraces a multiplicity of actors including National Government Ministries, Departments and Agencies, County Governments and the National Land Commission. The strategy proposes the establishment of the following institutions as key in the implementation of the Plan; The National Physical Planning Council, the National Technical Committee and the County Physical Planning Committee.

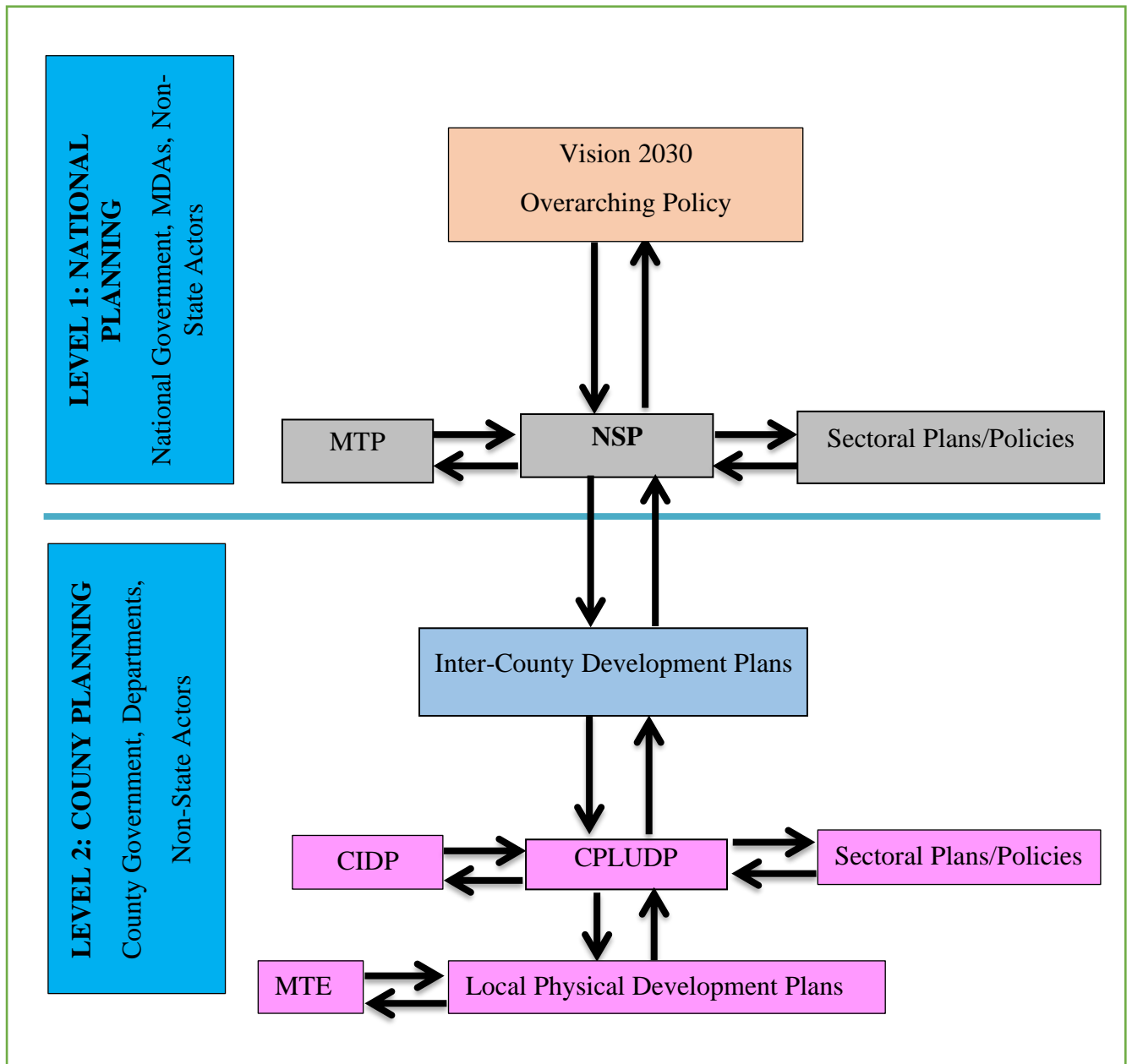
#### **2.4.2 NSP linkage to other plans**

The linkage of the National Spatial Plan (NSP) to county and other lower-level plans is key to realization of its aspirations and the successful actualization of these plans. The NSP provides a spatial framework to ground the Vision 2030 flagships projects and form a basis for coordination of County policies, strategies, measures and plans.

Inter County and County plans take into considerations the policies, measures and strategies of the NSP and implements them actualizing its aspirations.

County Physical and Land Use Development Plans provide a framework where the CIDP draws its programs and projects. The implementation of the CIDP in turn leads to realization of the objectives of the County Physical and Land Use Development Plan.

**Figure 3: NSP Linkage to other Plans**



**Source: The National Spatial Plan, 2015-2045**

### **3 COUNTY PROFILE**

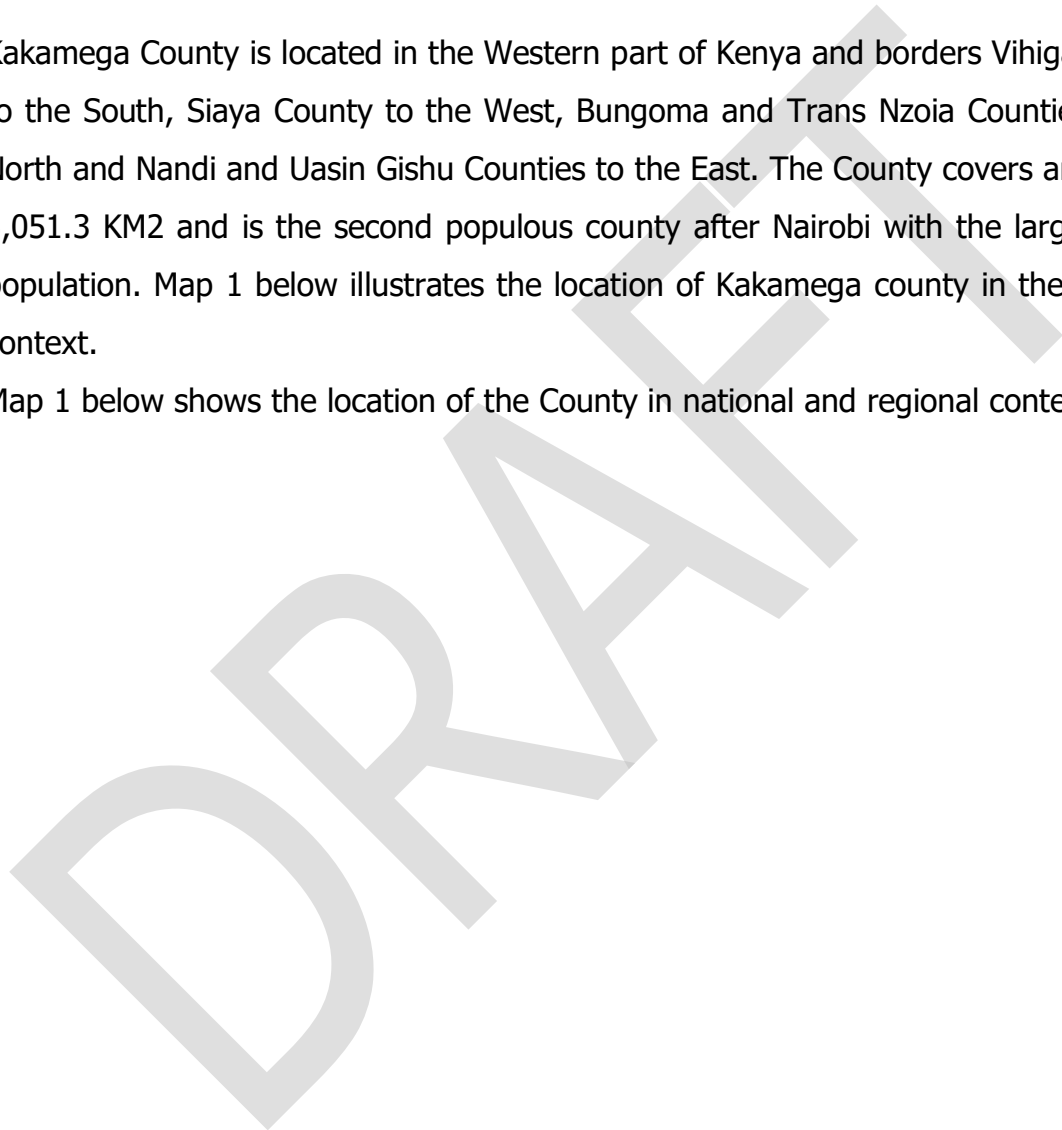
#### **3.1 Overview**

This chapter provides a description of the county in terms of the location and size, physiographic and natural conditions, demographic profile, socio-economic and infrastructural information.

#### **3.2 Location and Size**

Kakamega County is located in the Western part of Kenya and borders Vihiga County to the South, Siaya County to the West, Bungoma and Trans Nzoia Counties to the North and Nandi and Uasin Gishu Counties to the East. The County covers an area of 3,051.3 KM<sup>2</sup> and is the second populous county after Nairobi with the largest rural population. Map 1 below illustrates the location of Kakamega county in the national context.

Map 1 below shows the location of the County in national and regional context.





### **3.3 Bio-physical context**

The county has favorable climatic conditions given her agro-climatic location

#### **3.3.1 Topography**

The altitudes of the county ranges from 1,240 metres to 2,000 metres above sea level. The southern part of the county is hilly and is made up of rugged granites rising in places to 1,950 metres above sea level. There are several hills in the county such as Misango, Imanga, Eregi hills among others.

#### **3.3.2 Water resources**

The County is endowed with major rivers such as Yala, Isiukhu, Nzoia, Firatsi, Sasala and Lusumu. Additionally, there are earth dams/ water pans dams comprising of Nangili, Lumino, Sango and Lugulu Small among others. The water resources offer great potential for irrigation and drainage

#### **3.3.3 Ecological conditions**

There are two main ecological zones in the county namely; the Upper Medium (UM) and the Lower Medium (LM). The Upper Medium covers the Central and Northern parts of the county that practise intensive maize, tea, beans and horticultural production on small scale. The second ecological zone, the Lower Medium (LM), covers a major portion of the southern part of the county. The main economic activity in this zone is sugarcane production.

#### **3.3.4 Forests**

The County has two major types of forests namely planted and natural forests including the equatorial forest of Kakamega.

#### **3.3.5 Climatic conditions**

The annual rainfall in the County ranges from 1280.1mm to 2214.1 mm per year. The rainfall pattern is evenly distributed all year round with March and July receiving heavy rains while December and February receive short rains. The temperatures range from 180C to 290C. January, February and early March are the hottest months with other months having relatively similar temperatures except for July and August which have relatively cold spells. The county has an average humidity of 67 percent.

### 3.3.6 Mining

The county has mining potential including gold in Ikolomani, Lurambi, Khwisero and Shinyalu. Other minerals mined in the county include; quartz, iron, deposits of copper and silver, basalt among others.

### 3.3.7 Tourism

The strategic location of the County along the western tourism circuit gives an advantage in investing and enhancing tourism.

Kakamega County has one national park and two camping sites which are managed by the Kenya Wildlife Service. The Kakamega Forest is also a big tourist attraction besides, bull fighting and the rich cultural practices (Wanga kingdom)

## 3.4 Social-Economic Status

### 3.4.1 Demography

The population of Kakamega County from KNBS 2019 data was estimated at 1,867,539 (51.96% women and 48.04% men) It has an average household size of 4.3 and population density of 618 persons per square kilometer. By the end of the planning period, the population of Kakamega county is expected to be 2,546,616 persons. The table below shows the population projection of Kakamega county for the NSP planning period.

Table 2: Population Projection to the year 2045

Year	2019	2020	2025	2030	2035	2040	2045
<b>Population size</b>	1,867,539	1,889,950	2,006,102	2,129,392	2,260,259	2,399,169	2,546,616
<b>Male</b>	897133	907932	963731	1022960	1085828	1152561	1223394
<b>Female</b>	970406	982018	1042371	1106432	1174431	1246608	1323222
<b>Households</b>	434,311	439,523	466,535	495,207	525,642	557,946	592,236
<b>Area (sq km)</b>	3,020						
<b>Density</b>	618	626	664	705	748	794	843

**Source:** State Department for Physical Planning, 2022

### 3.4.2 Economic Activities

The main driver of the economy in Kakamega county is Agriculture. The main crops grown are sugarcane, maize, bean, cassava, finger millet and sorghum. Maize and sugarcane are generally grown on large scale. Apiculture, tea, rice, fishing and livestock production is being promoted in some area within the county.

Trade and commerce is also evident in Kakamega, and it is characterized by financial services such as commercial banks, microfinance institutions, insurance companies and cooperative societies. The county has 187 trading centres dominated by wholesale and retail traders and JuaKali artisans.

Mining of minerals such as gold, quartz, iron, copper and silver, basalt among others for both local and export market.

The County is endowed with various tourist attraction which comprise of the Kakamega forest, a national park, the crying stone in Ilesi, bull fighting and the rich cultural practices (Wanga kingdom)

### 3.4.3 Physical Infrastructure

Infrastructure is key to the achievement of the National Spatial Plan objectives of global competitiveness, regional balance and optimal utilization of land and other resources. Kakamega has fairly developed infrastructure including transport, physical and social infrastructure. Which have a high potential of economically empowering its People and attracting private investors if well maintained. The sector faces problems regarding poor connection, low coverage, unreliability, high costs, skewed distribution and low/surpassed design. To rectify this situation, clear indicative policy, strategies and measures have to be developed and implemented to achieve overall efficiency

Road transport is the pre dominant transport mode in the county, however limited on other modes such as rail and air transport. The County is traversed by two major roads namely; The Nakadok-Lodwar-Kitale-Bungoma-Kisumu-Migori-Ibd Isebania road (A1) and Busia-Nambale-Mumias-Kakamega-Kapsabet road (B12). The County has two railway stations located in Lugari and Butere and two air strips in Kakamega and Mumias.

### 3.4.4 Public Utilities

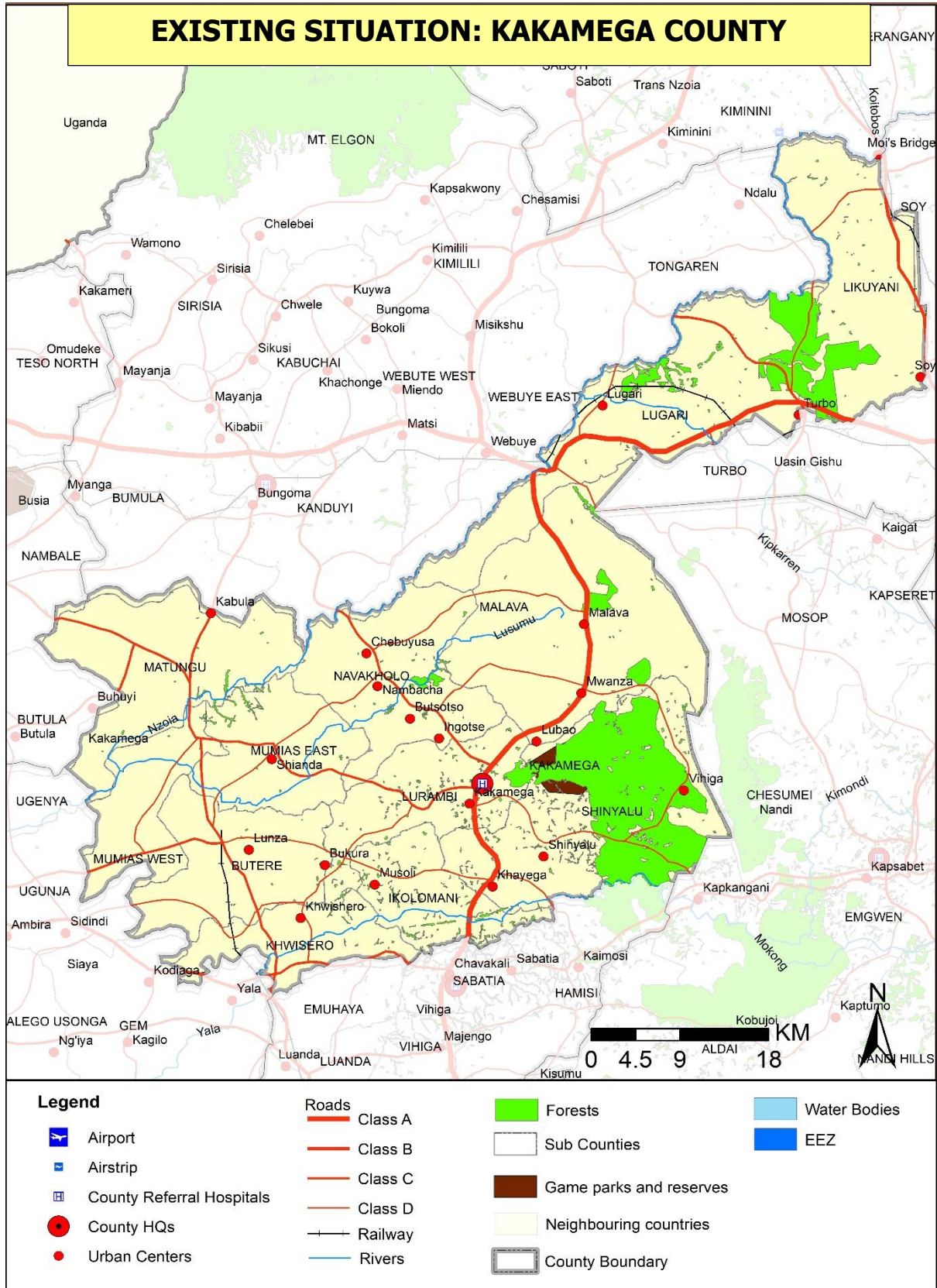
To achieve a spatial and balanced regional development and meet demands of a growing population, there is need to develop and enhance economic infrastructure such as water services, waste management, energy and ICT to provide the foundation for economic development.

### 3.5 The County's Comparative Advantage

- Strategic location; A major transportation corridor that is Nakadok-Lodwar-Kitale-Bungoma-Kisumu-Migori-Ibd Isebania road (A1) traverse the county and a network of roads.
- High agricultural potential region: This region has high potential for rain fed agriculture and other inherent potentials like industries and urbanization. The county has 545,806.4 acres of arable land that is suitable for farming
- Kakamega County is a member of the Lake Region Economic Bloc (LREB), therefore, it is endowed with huge potential for investment and growth.
- The County has high potential for tourism (western Tourism circuit) due to tourist attractions like Kakamega Forest National Reserve, crying stone, bull fighting and the rich cultural practices (Wanga kingdom)
- Industrial potential- The county host numerous sugar factories namely Butali, West Kenya and Mumias sugar factory.
- Mining potential- The county has a huge unexploited mining potential which comprise gold, quartz, iron, deposits of copper and silver, basalt.

Map 2 below shows the existing situation in Kakamega County.

**Map 2: The Existing Situation in Kakamega County**



**Source:** State Department for Physical Planning, 2022

## **4 DEVELOPMENT STRATEGIES AND POLICY GUIDELINES FOR KAKAMEGA COUNTY**

### **4.1 County Specific Issues and Development Strategies**

The National Spatial Plan provides strategies for spatial growth and development across the country. The strategies are aimed at providing a spatial expression to Kenya Vision 2030 and other sector policies.

This section seeks to provide strategies for spatial growth and development of the county by addressing the factors that prevent the county from achieving the intended goals and objectives. The development strategies discussed are aimed at managing the global impacts, optimizing use of natural resources, creating a county balance and transforming rural areas. Specifically, the development strategies have been proposed to address the following aspects of the county's development agenda;

- Enhancing the national competitiveness
- Optimal use of land and other resources
- Balanced county development
- Rural development in the county
- Urbanization

The following are detailed NSP sector-specific issues and strategies that apply to Kakamega County.

Table 3:County Specific Issues and Development Strategies

<b>Strategy 1: Enhancing National Competitiveness</b>		
<b>Potentials/Opportunities</b>	<b>Constraints</b>	<b>Strategies</b>
<ul style="list-style-type: none"> <li>• Ability to tap on technology and innovation into the county’s economy</li> <li>• International trunk road class A1 Nakadok-Lodwar-Kitale-Bungoma-Kisumu-Migori-Ibd Isebania</li> <li>• Agricultural production (maize, coffee, sugarcane)</li> </ul>	<ul style="list-style-type: none"> <li>• Inability to sufficiently embrace the transition to knowledge, technology and innovation based economies</li> <li>• High costs of production occasioned by unreliable supply and high costs of energy</li> </ul>	<ul style="list-style-type: none"> <li>• Encouraging the emergence of ICT locations, research oriented institutions in the county.</li> <li>• Harness renewable and green energy sources to increase energy capacity and reduce costs</li> </ul>
<b>Strategy 2: Optimizing the Use of Land and Natural Resources</b>		
<b>Agriculture (Agro-ecological zone II)</b>		
<ul style="list-style-type: none"> <li>• High potential agro-ecological zones</li> <li>• Irrigation potential because of permanent rivers: (Rice in Matungu, Mumias and Butere)</li> </ul>	<ul style="list-style-type: none"> <li>• Uncontrolled fragmentation of land into uneconomical sizes</li> <li>• Inadequate agricultural support infrastructure</li> <li>• Use of inappropriate farm inputs and technology</li> <li>• Market uncertainties for agricultural produces</li> </ul>	<ul style="list-style-type: none"> <li>• Regulate fragmentation of agricultural land</li> <li>• Strictly regulate expansion of urban areas</li> <li>• Agricultural support infrastructure should be provided to match the function</li> <li>• Transport infrastructure to be improved</li> <li>• Provide incentives and subsidies to farmers</li> </ul>

<b>Environmental Conservation and protection Areas</b>		
<ul style="list-style-type: none"> <li>• Prime agricultural land</li> <li>• Water catchment areas (Malava &amp; Kakamega forests)</li> <li>• Areas of rich bio-diversity conservation</li> <li>• Recreation and tourism areas</li> <li>• Habitat for wildlife</li> <li>• Recreation and Tourism area</li> </ul>	<ul style="list-style-type: none"> <li>• Soil erosion</li> <li>• Ecosystem degradation</li> <li>• Effects of climate change</li> <li>• Encroachment by human settlements and activities</li> <li>• Pollution</li> <li>• Declining of water volume flows</li> </ul>	<ul style="list-style-type: none"> <li>• Increase forest cover through afforestation, re-afforestation and agro-forestry</li> <li>• Strict soil erosion control measures</li> <li>• Development not permitted in these areas except for purposes of eco-tourism</li> <li>• Create public awareness on ecological and socioeconomic value of wetlands</li> <li>• Develop and operationalize legal and governance mechanisms for sustainable riverine wetlands management</li> </ul>
<b>Tourism (western circuit)</b>		
<ul style="list-style-type: none"> <li>• Part of the western tourism circuit (Kakamega Forest, bull fighting, the crying stone, Lukova in Matete, Mawe Tatu)</li> </ul>	<ul style="list-style-type: none"> <li>• Over reliance on safari and animal tourism</li> <li>• Little exploitation of tourism potential due to poor quality and inadequate infrastructure</li> <li>• Encroachment of human activities into the protected areas</li> <li>• Untapped and declining product diversity</li> <li>• Poor and less assertive marketing strategies</li> <li>•</li> </ul>	<ul style="list-style-type: none"> <li>• Plan and provide appropriate tourism support infrastructure.</li> <li>• Strict enforcement of the existing regulations for safeguarding protection areas</li> <li>• Identify, map and gazette potential protection and conservation areas</li> <li>• Promote investment in sustainable tourism (eco-tourism)</li> <li>• Identify and map potential eco-tourism development sites.</li> <li>• Promote domestic tourism by providing incentives and subsidies</li> <li>• Diversify tourism</li> </ul>
<b>Industrial Potential</b>		

<ul style="list-style-type: none"> <li>• Availability of local and international markets</li> <li>• Availability of raw materials</li> <li>• Main forest based industries (building materials, food &amp; medicinal plants)</li> <li>• High potential for Agro-based industries</li> </ul>	<ul style="list-style-type: none"> <li>• Inadequate transport infrastructure</li> <li>• Poor linkage to markets due to poor transport</li> <li>• Low adoption of technology for exploration and exploitation</li> <li>• High cost of production</li> <li>• Price fluctuation</li> </ul>	<ul style="list-style-type: none"> <li>• Establish industrial parks</li> <li>• Improve agricultural markets and value addition</li> <li>• Provide adequate supportive infrastructure</li> <li>• Diversify energy production sources to reduce cost of production and reliability</li> <li>• Promote formation of cooperatives</li> <li>• Provide appropriate technology to enhance value addition</li> <li>• Promote the formation of cooperatives and Saccos to advance marketing</li> </ul>
<b>Public Utilities</b>		
<b>Solid waste management</b>		
<ul style="list-style-type: none"> <li>• Existing institutions (county government)</li> <li>• Private solid waste collecting companies</li> </ul>	<ul style="list-style-type: none"> <li>• Increased solid waste generation due to increased population pressure</li> <li>• Inadequate solid wastes management facilities</li> <li>• Unsustainable waste disposal</li> </ul>	<ul style="list-style-type: none"> <li>• Provide solid waste management facilities</li> <li>• Promote the, Reduce, Reuse, Recycle (3Rs)</li> <li>• Explore other modes of solid waste management such as recycling of waste materials and waste-energy facilities</li> <li>• Collaborate with other entities on waste management</li> <li>• Identify and maintain final disposal sites</li> </ul>
<b>Water and Sanitation</b>		
<ul style="list-style-type: none"> <li>• Existing institutions (KACWASCO)</li> <li>• Enactment of the Water Act 2002</li> <li>• Embracing of water and sanitation as a bill of rights</li> <li>• Diverse water sources in rivers, protected springs, boreholes, wells and streams</li> <li>• Abundance of rainfall 1280mm to 2214mm</li> </ul>	<ul style="list-style-type: none"> <li>• Environmental pollution and degradation from human activities</li> <li>• Catchment areas degradation and encroachment</li> <li>• Deforestation resulting to decreased water levels and sediment loads</li> </ul>	<ul style="list-style-type: none"> <li>• Promote sustainable water management</li> <li>• Effective enforcement of environmental and natural resources policies, laws and regulations</li> <li>• Improve access to clean and safe water</li> <li>• Investments in water harvesting technologies and storage facilities</li> <li>• Encourage rain water harvesting and storage to complement other supply from other sources</li> </ul>

	<ul style="list-style-type: none"> <li>• Poor distribution with limited reticulation</li> <li>• A sharp increase in water demand resulting from high population increase</li> </ul>	
<b>Information &amp; Communication Technology (ICT)</b>		
<ul style="list-style-type: none"> <li>• Availability of fiber optic connection</li> <li>• Presence of mobile network service providers i.e. Safaricom, Airtel, Telecom</li> <li>• High demand for ICT services</li> </ul>	<ul style="list-style-type: none"> <li>• Poor access to ICT infrastructure</li> <li>• High connection costs</li> <li>• Poor connection or low network coverage in certain parts of the County</li> </ul>	<ul style="list-style-type: none"> <li>• Increase ICT relevant infrastructure</li> <li>• Expansion of the existing network to all urban areas and rural growth centers</li> <li>• Mainstreaming ICT in all sectors to promote service delivery</li> <li>• Enhance adoption of ICT throughout the County</li> </ul>
<b>Transportation</b>		
<b>Roads</b>		
<ul style="list-style-type: none"> <li>• Existing road network</li> <li>• Rapid urbanization</li> <li>• Increased trade and investments</li> </ul>	<ul style="list-style-type: none"> <li>• Poor state and lack of connectivity of the roads</li> <li>• Inadequate linkages with neighboring counties</li> <li>• Inadequate public transport system, Lack of NMT Infrastructure and inappropriate modal split</li> <li>• Encroachment on road reserves</li> <li>• Poor condition of the existing County roads</li> <li>• Outburst of motorcycle and 'tuk tuk' in both rural and urban areas</li> </ul>	<ul style="list-style-type: none"> <li>• Plan and provide appropriate hierarchy of roads to increase internal and external linkages within the county</li> <li>• Prepare and implement sustainable mobility plans</li> <li>• Enforce a regulatory standard requirement for all public transport service operators</li> <li>• Delineate and enforce road reserve extents</li> <li>• Improve the condition of all County roads to motorable standards</li> </ul>

<b>Air transport</b>		
<ul style="list-style-type: none"> <li>• Presence of airstrips i.e. Kakamega and Mumias</li> <li>• Rapid urbanization</li> <li>• Proximity to Eldoret and Kisumu Air ports</li> </ul>	<ul style="list-style-type: none"> <li>• Insufficient and ineffective linkages between airstrips and other transport modes</li> <li>• High maintenance cost</li> <li>• Poor condition of the airstrips especially Mumias</li> <li>• Encroachment/ grabbing of Mumias airstrip land</li> </ul>	<ul style="list-style-type: none"> <li>• Improve and expand existing airstrips Kakamega and Mumias Airstips</li> <li>• Improve linkages between the airstrips and other modes of transport</li> </ul>
<b>Sports</b>		
<ul style="list-style-type: none"> <li>• Existing developed stadium at Kakamega (Bukhungu Stadium)</li> <li>• Bull fighting, culture, football</li> </ul>	<ul style="list-style-type: none"> <li>• Poor management and maintenance of existent infrastructure</li> <li>• Skewed distribution of sporting facilities</li> <li>• Little modernization and upgrade of sporting infrastructure</li> </ul>	<ul style="list-style-type: none"> <li>• Promote sound maintenance and management strategies for existing facilities</li> <li>• Promote the sector through providing incentives and subsidies</li> <li>• Encourage private public partnerships in the expansion of the sports sector</li> <li>• Promote local talent through investing in sports training institutions</li> </ul>
<b>Strategy 3: Promoting Balanced Intra-County Development</b>		
<ul style="list-style-type: none"> <li>• Existing resources – Forests, minerals, agricultural based activities, Industries, tourism based resources, lake based resources</li> <li>• Enabling policy framework</li> <li>• Establishment of the County under devolution</li> <li>• Rain fed and irrigated agriculture</li> </ul>	<ul style="list-style-type: none"> <li>• Inadequate infrastructural facilities and services</li> <li>• Investment in infrastructure with a bias to urban areas</li> <li>• Under exploitation of resources</li> <li>• Weak linkages and accessibility to urban areas</li> </ul>	<ul style="list-style-type: none"> <li>• Strengthen the established economic block in the region</li> <li>• Encourage equitable exploitation and sound management of mineral resources while ensuring local participation for improved economic development</li> <li>• Promote investment in sustainable tourism including eco- tourism</li> </ul>

<ul style="list-style-type: none"> <li>• Fishing Tourism</li> <li>• Growing trading centres</li> </ul>		<ul style="list-style-type: none"> <li>• Promote irrigation activities for improved productivity in quantity and quality of yield</li> <li>• Promote industrialization and value addition through the provision of support infrastructure in the less developed regions of the County as well as strengthening the better developed regions</li> </ul>
<b>Strategy 4: Promoting Rural Development</b>		
<ul style="list-style-type: none"> <li>• Resource endowment; forest based, tourism based resources, agriculture based activities- rain fed and irrigated, mineral deposits and industries</li> <li>• Existing infrastructure</li> </ul>	<ul style="list-style-type: none"> <li>• Under exploitation of resources</li> <li>• Weak rural – urban linkages</li> <li>• Inefficient and dilapidated infrastructural services</li> <li>• Slow adoption technology and innovation</li> <li>• Low productivity</li> <li>• Uncontrolled sub-division of agricultural land;</li> </ul>	<ul style="list-style-type: none"> <li>• Develop appropriate transport and infrastructural facilities and services</li> <li>• Promote rural industrialization (rural tourism, mining, agro based industries) through establishment of production units in the rural areas in relation to their potential</li> <li>• Promote urban containment to reduce effects of urban sprawl into the rich agricultural</li> <li>• Promote sustainable land uses</li> </ul>
<b>Strategy 5: Urbanization Strategy</b>		
<ul style="list-style-type: none"> <li>• Devolution</li> <li>• Supporting Policies</li> </ul>	<ul style="list-style-type: none"> <li>• Skewed distribution of urban centres (most urban nodes lie along transport corridors)</li> <li>• Urban sprawl (peri-urban areas between urban areas and area devoted for agriculture)</li> <li>• Lack of role of specialization</li> <li>• Informal settlements</li> <li>• Unreliable transport systems</li> </ul>	<ul style="list-style-type: none"> <li>• Promote urban centre as per their potential and population (local, market,rural,urban centres and growth centres)</li> <li>• Create enabling environment for commercial and industrial developers</li> <li>• Increase employment opportunities for improved livelihoods for urban dwellers</li> <li>• Provide alternative areas for development of urban areas by providing appropriate support infrastructure</li> </ul>

	<ul style="list-style-type: none"><li>• Poor implementation of development plans and planning policies</li></ul>	<p>and utilities close to rural areas thus urban containment and stimulation of rural growth</p> <ul style="list-style-type: none"><li>• Strengthen rural-urban linkages through provision of integrated transport and communication systems to reduce the rate of urbanization and improve economy.</li></ul>
--	--	--

DRAFT

#### **4.1 National Spatial Plan Policy Guidelines and Measures for Kakamega County**

The National Spatial Plan has stipulated policies to provide a foundation upon which to anchor the strategies enumerated therein. The primary aim is to inculcate discipline in the use of land and natural resources of the country thus stemming duplication and wastage of the resources.

This section seeks to provide the spatial policy guidelines and measures aimed at promoting the achievements of the objectives of the National Spatial Plan using its guidelines. They aim at enhancing global competitiveness and economic efficiency, optimizing the use of land and natural resources, promoting the regional balanced development and conservation of the environment. These policies are supported by a wide range of measures which spell out the specific actions to be undertaken to actualize the policy intentions. The policies shall ensure that the county is globally competitive as an investment especially in emerging sectors such as the ICT. The policies shall also be implemented by the county government's agencies responsible for physical planning and development control as well as the authorities responsible for land administration.

The following are the policies and measures specific to Kakamega County.

**Table 4: NSP Policy guidelines and measures for the County**

	<b>Sector/Area</b>	<b>Policy</b>	<b>Measures</b>
1	<b>Framework for Development of Spatial Growth Regions</b>	<ul style="list-style-type: none"> <li>• Enhance agricultural production and value addition</li> <li>• Environmental conservation</li> <li>• Balanced growth</li> <li>• Investment in social and physical infrastructure</li> </ul>	<ul style="list-style-type: none"> <li>• Infrastructure provision to support value addition initiatives</li> <li>• Undertake main urban areas centres development e.g. Mumias, Shinyalu, Butere, Khwisero, Malava, Likuyani urban st</li> <li>• Rural development through provision of infrastructure, agricultural sector development and related economic activities</li> <li>• Development and rehabilitation of key infrastructure in underserved locations</li> <li>• Environmental protection and conservation forest resources</li> </ul>
2	<b>County spatial structure</b>	<ul style="list-style-type: none"> <li>• The National Spatial Plan is a framework to achieve integrated and sustainable physical/spatial development</li> <li>• National Spatial Plan as a basis for preparation of lower tier development plans</li> </ul>	<ul style="list-style-type: none"> <li>• All regional, county and local physical/spatial plans be guided by objectives and policies of NSP</li> <li>• Review spatial/physical plans to conform to objectives/policies of NSP</li> <li>• Review 5 year medium term spatial plans shall take into account provisions of NSP</li> <li>• Sectoral plans to take cognizance of objectives and policies of NSP</li> </ul>

	<b>Sector/Area</b>	<b>Policy</b>	<b>Measures</b>
3	<b>Enhancing National Competitiveness</b>	<ul style="list-style-type: none"> <li>• Land and natural resources shall be utilized optimally and sustainably</li> <li>• Investment in physical and social infrastructure</li> <li>• Concentrated development especially around key urban areas</li> <li>• Resource conservation and cultural preservation</li> <li>• Tourism infrastructure shall be developed</li> <li>• Environmental Conservation</li> </ul>	<ul style="list-style-type: none"> <li>• Enhance the Livability Index for urban areas by providing quality and affordable housing, improving neighborhood characteristics, improving quality of the environment, providing better healthcare and creating employment opportunities</li> <li>• Selective development concentration</li> <li>• Infrastructure provision in key human settlement areas</li> <li>• Environmental protection of environmentally sensitive areas and forests</li> <li>• Conservation of unique cultural landscape and resources</li> <li>• Small and medium urban Centres development</li> <li>• Rural development through provision of infrastructure, agricultural sector development and related economic activities</li> </ul>
4	<b>Modernizing Agriculture (Agro-ecological Zone II)</b>	<ul style="list-style-type: none"> <li>• Agriculture potential areas in the rural areas to be safeguarded against urbanization and land sub-division</li> <li>• Intensification of the agricultural use of land to increase productivity.</li> </ul>	<ul style="list-style-type: none"> <li>• Prepare and implement County spatial plan and lower level plans to protect agricultural land</li> <li>• Support market access and market linkages</li> <li>• Improve extension and technology uptake in the agriculture sector</li> <li>• Provide appropriate infrastructure to support agricultural production</li> <li>• Subdivision of land within agricultural potential areas shall be strictly regulated</li> </ul>
5	<b>Diversify Tourism (Western Circuit)</b>	<ul style="list-style-type: none"> <li>• Tourist attraction sites shall be protected and conserved</li> </ul>	<ul style="list-style-type: none"> <li>• Prepare subject plans for the wildlife habitats</li> <li>• Prohibit the location of incompatible land use activities next to tourists' sites</li> </ul>

	<b>Sector/Area</b>	<b>Policy</b>	<b>Measures</b>
		<ul style="list-style-type: none"> <li>• Governance of tourism shall be enhanced</li> <li>• Diversification of tourism products shall be enhanced</li> <li>• Appropriate tourism support infrastructure and facilities to be provided</li> </ul>	<ul style="list-style-type: none"> <li>• Regulate developments within the tourist attraction sites</li> <li>• Identify, map and gazette potential tourism development sites</li> <li>• Facilitate access to tourism development incentives</li> <li>• Western circuit traversing through the county to be planned and developed to offer eco-tourism, ecology/study tourism, sports, cultural and heritage tourism, medical tourism, conference tourism exhibition and agro-tourism</li> <li>• Develop the requisite tourism support infrastructure and facilities</li> <li>• Upgrade the existing tourism facilities and infrastructure and invest in more</li> </ul>
6	<b>Managing Human Settlements</b>	<ul style="list-style-type: none"> <li>• Alternative urban areas shall be developed and supported to promote balanced regional development and spur growth.</li> <li>• Rural growth centres shall be rationalized and supported to act as central places and settlements clustered to free the rich agricultural land</li> <li>• Human settlements shall be developed in line with environmental and natural resources conservation</li> <li>• Provision of an efficient, reliable and effective transport system for human settlements</li> <li>• The management and governance of Human Settlements shall be improved.</li> </ul>	<ul style="list-style-type: none"> <li>• Prepare and implement local physical development plans to define the urban growth limits for the principal urban centres eg. Mumias, Butere, Turbo, Sigalagala, Shinyalu, Kwisero</li> <li>• Enforce strict regulations and justifications on development control processes.</li> <li>• Provide requisite infrastructure to support growth and development.</li> <li>• Promote sectors such as agriculture that have potential to stimulate rural development</li> <li>• Incorporate disaster management and mitigation in planning of rural settlements.</li> <li>• Plan and provide an integrated waste management system.</li> </ul>

	<b>Sector/Area</b>	<b>Policy</b>	<b>Measures</b>
		<ul style="list-style-type: none"> <li>• upgrading of the existing settlements and forestalling of new informal settlements</li> <li>• Peri-urban development shall be managed and controlled to contain urban growth within its limits and protect rural land uses.</li> </ul>	<ul style="list-style-type: none"> <li>• Build institutional capacities of the urban areas management boards</li> </ul>
7	<b>Conserving the Natural Environment</b>	<ul style="list-style-type: none"> <li>• All environmentally sensitive areas shall be protected and utilized in a sustainable manner</li> <li>• All government agencies shall integrate environmental concerns in policy formulation, resource planning and development processes</li> <li>• Community participation shall be mainstreamed in the protection and conservation of natural resources</li> <li>• National and County Physical Planning departments shall mainstream climate change into their planning processes</li> </ul>	<ul style="list-style-type: none"> <li>• Prepare and implement integrated management plans for Environmental sensitive areas</li> <li>• Involve and empower communities in the management of environmentally sensitive areas and promote environmental education and awareness</li> <li>• Adopt appropriate land use planning and watershed management practices for sustainable development</li> <li>• Promote sustainable waste Management and Pollution Control</li> <li>• Identify species which are rare and endangered with the aim of protecting them from extinction</li> <li>• Develop and implement harmonized regional plans for sustainable management of trans-boundary resources</li> <li>• Implement the National Climate Change Strategy and the National Climate Change Action plan</li> <li>• Strengthen Environmental Governance and harmonize sectoral policies, legislation and regulations</li> </ul>

	<b>Sector/Area</b>	<b>Policy</b>	<b>Measures</b>
8	<b>Integrated Transportation Network</b>	<ul style="list-style-type: none"> <li>• An integrated and functional transport system for the county and urban areas shall be developed</li> <li>• An urban transport policy that facilitates an integrated, balanced and environmentally sound urban transport system in which all modes efficiently play their roles shall be developed</li> <li>• Environmental conservation shall be upheld in the planning, development and management of the transportation network</li> <li>• An efficient and affordable Mass Public Transport for all urban areas in the county shall be developed</li> </ul>	<ul style="list-style-type: none"> <li>• Provide access and linkage, between county headquarter and sub-county headquarters and link them to national transportation corridors</li> <li>• Adopt transit oriented development in the planning, design and development of all public urban transport</li> <li>• Integrate land use with urban transport planning</li> <li>• Design and develop integrated transport networks that considers all different modes of transport for all people</li> <li>• Establish a comprehensive transport management information system for all transport modes</li> <li>• Develop a public transport policy to regulate planning and management of public transport</li> </ul>
9	<b>Providing Appropriate Infrastructure</b>	<ul style="list-style-type: none"> <li>• Safe, adequate, reliable and affordable electricity for both urban and rural settlements shall be provided</li> <li>• Expansion and improvement of water reticulation systems to facilitate the access to clean, safe, adequate, reliable and affordable water in human settlements shall be promoted</li> <li>• A globally competitive, accessible and affordable higher education, training and research facilities shall be promoted</li> <li>• A network of functional, efficient, safe, accessible and sustainable county health referral infrastructure shall be established</li> </ul>	<ul style="list-style-type: none"> <li>• Mainstream and enforce green energy options in the design of buildings</li> <li>• Increase access to electricity through upgrading and expansion of the national power transmission and distribution network</li> <li>• Development of county rainwater harvesting strategy and water storage investment plans for all the villages and urban centres;</li> <li>• Restore all the water towers.</li> <li>• Build water kiosks and yard taps, develop water supply pipeline systems and sewers, and a comprehensive mapping of all water supplies systems in the informal settlements</li> </ul>

	<b>Sector/Area</b>	<b>Policy</b>	<b>Measures</b>
		<ul style="list-style-type: none"> <li>• Appropriate, quality, efficient and cost effective ICT infrastructure in both rural and urban areas shall be promoted</li> <li>• The expansion of sewerage systems and waste management facilities shall be promoted to improve sanitation in human settlements</li> <li>• Sporting infrastructure shall be planned, developed, maintained and the existing rehabilitated to promote sports development</li> </ul>	<ul style="list-style-type: none"> <li>• All universities and other tertiary institutions to invest in research, technology and innovation</li> <li>• Develop and upgrade physical infrastructure in all education institutions to increase their capacity</li> <li>• Strengthen outreach systems for provision of</li> <li>• Health services to marginalized and vulnerable population</li> <li>• Provision of quality emergency health services at the point of need</li> <li>• Develop and upgrade ICT Infrastructure to cover all the rural and local growth centres</li> <li>• Mainstream use of ICT in all levels of government and the private sector (e-government)</li> <li>• All spatial plans to make provision for development of sewer systems and treatment works and solid waste disposal sites</li> <li>• Expansion of urban boundaries to be guided by investment in infrastructural services</li> <li>• Adopt appropriate technology to facilitate reduction, recycle and reuse of waste (3r's)</li> <li>• Establish County Sports Talent Centers to nurture and develop sports talents in the county</li> </ul>

	<b>Sector/Area</b>	<b>Policy</b>	<b>Measures</b>
10	<b>Towards a Rapidly Industrializing County</b>	<ul style="list-style-type: none"> <li>• The cluster development strategy shall be promoted to focus on proximity to raw materials and markets of region specific products</li> <li>• Specific sites for industrial development shall be identified, planned and serviced with the appropriate infrastructure</li> <li>• Adequate and affordable energy supply for the industrial sector shall be provided</li> </ul>	<ul style="list-style-type: none"> <li>• Prepare and implement an industrial master plan</li> <li>• Promote value addition in processing of local produce</li> <li>• Integrate the industrialization process and environment conservation</li> <li>• Provide an integrated, efficient, reliable and sustainable transport and energy infrastructure</li> <li>• Adopt renewable energy generation programmes</li> <li>• Promote the adoption of energy efficient technologies to lower the demand for energy</li> </ul>

DRAFT



## **5 IMPLEMENTATION AND ADOPTION OF THE GUIDELINES**

### **5.1 Overview**

The implementation framework identifies activities and further ties them with responsible actors, resources and timeframes adequate for their execution. It constitutes a deliberately established method, means or system of ensuring that the policies, strategies and measures outlined in the guidelines are continuously and consistently executed to achieve their objectives.

To effectively implement the guidelines, the various sectors, actors and levels of planning have been identified and have to work together and the mandate of the sectors at the National and County levels of planning have to be integrated.

### **5.2 Implementation Approaches**

The County Specific Guidelines will be implemented through various approaches including:

1. Preparation of spatial plans to integrate and conform to the proposals of the County Guidelines. The plans include:
  - Inter-County Physical and Land Use Development Plans for Metropolitan regions, conservation zones, river basins, water towers, coastal ecosystems, trans-boundary resource areas and transport corridors, among others.
  - County Physical and Land Use Development Plans.
  - Local Physical and Land Use Development plans for Cities, Urban areas, special area plans, subject plans and detailed neighbourhood plans, among others.
  - Sectoral plans
2. Integration of the guideline policies, strategies and measures into the County sector plans, programs and projects. Ministries, Departments and Agencies (MDAs), County and National Departments identified in the plan to administer the policies, strategies and measures are required to translate them into action plans, programmes and projects and to include them in their subsequent sector plans.
3. Formulation of policies, regulations and standards to guide development control

### 5.3 Implementation Framework

The implementation of the various policies, strategies, measures, programmes and projects under these Guidelines will involve a wide range of actors. It will require a coordinated approach and partnership between the National and County Governments and non-state actors. It may require re-engineering of institutions and a number of actors to undertake the implementation through a harmonized approach.

The National Spatial Plan identified a multi-leveled framework for implementation of the plan that incorporates all levels of actors. In this regard, the institutions identified in the NSP to undertake implementation of the plan at County-level shall also be mandated to ensure implementation of this Guidelines.

The following are the Institutions mandated to ensure implementation of the County Specific guidelines;

#### 5.3.1 County Physical Planning Committee

The role of the County Planning Committee shall be to ensure aspirations of the guidelines are articulated in preparation of the County Spatial Plans, County Integrated Development Plans and Local Physical and Land Use Development Plans.

The composition of this committee consists of;

- i. The Governor who will be the Chairperson,
- ii. the Deputy Governor,
- iii. the County Executive Committee Members from various sectors
- iv. Directors from various relevant County Departments including Lands and Physical Planning, Economic planning, Agriculture, Industrialization, Tourism, Environment, Transport and Infrastructure

The functions of the committee include;

- 1) To promote effective integration between physical, economic and sectoral planning within the framework of county development policies.
- 2) To provide policy guidance for the implementation of strategic spatial projects

- 3) To ensure that the guidelines policies and measures are mainstreamed in the various county plans.
- 4) To mobilize resource for implementation of the Guidelines.

### **5.3.2 County Planning Unit (CPU)**

The technical Unit shall provide technical support to the various implementing County departments on issues relating to physical planning.

The CPU shall;

- i. Monitor the Implementation of the guidelines.
- ii. To disseminate components of the guidelines to the various county departments.
- iii. Update the County Physical Planning Committee on a regular basis on the implementation of the guidelines.

The County Director of Physical Planning shall be responsible for preparation of an annual state of planning report which shall among other things appraise the status of implementation of the guidelines.

### **5.3.3 National Land Commission**

The National Land Commission shall play its oversight role in land use planning to ensure efficient implementation of the NSP and the guidelines. Other functions of the Commission in the implementation of the NSP and the guidelines include the following: - To formulate mechanisms and parameters for monitoring and overseeing land use planning.

- i. To ensure that relevant planning authorities carry out their functions as required by law.
- ii. To make recommendations for improvements of the planning systems in the county.
- iii. To mobilize resources to support physical/land use planning.

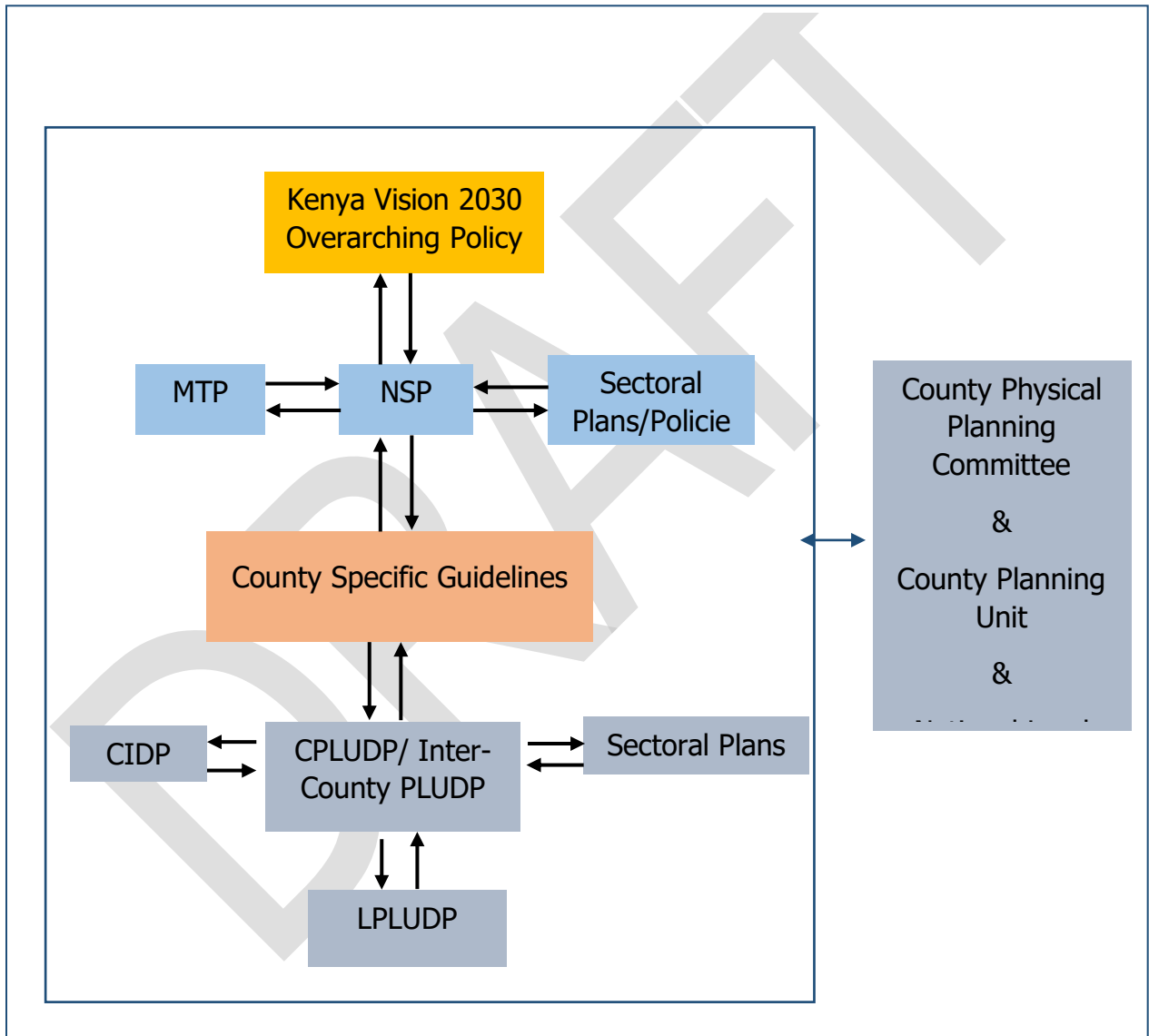
## **5.4 Monitoring and Evaluation**

Implementation of the guidelines will be monitored and evaluated to measure both outputs and outcomes and ensure that the intended actions are implemented in a timely manner. To facilitate attainment of the objectives of the guidelines, performance

indicators will be developed by the County Physical Planning Department for efficient monitoring. Periodic reports will be prepared in relation to progress being made in their implementation.

The graphic below illustrates the implementation structure for County Specific guidelines.

**Figure 4: Implementation structure of the guidelines**



**Source: State Department for Physical Planning, 2022**

## 5.5 Conclusion

The application of these guidelines will be undertaken by a number of actors and hence the need for a coordinated approach. The lead agency will be Kakamega County Government which will be responsible for implementing various county specific initiatives proposed by the guidelines.

The National Government, County Government of Kakamega, the private sector and the general public will be critical in actualizing the objectives of these guidelines. The County Physical Planning Committee shall develop a communication strategy to enhance the synergies.

The National Department of Physical Planning shall undertake sensitization, training and capacity building of the County Government and National Government institutions and agencies that will be involved in the implementation of these guidelines. Special attention will be given to the County physical planning units, as they will be expected to provide technical expertise in the implementation of the County specific policies and strategies.

DRAFT