



# NATIONAL SPATIAL PLAN GUIDELINES FOR KIAMBU COUNTY

Optimal productivity, sustainability, efficiency and equity in  
use of our land and territorial space



JUNE 2022

MINISTRY OF LANDS AND PHYSICAL PLANNING  
STATE DEPARTMENT FOR PHYSICAL PLANNING

Kenya    
VISION 2030

## **Foreword**

The Constitution of Kenya apportions responsibility of planning to both National and County Governments. Under the Fourth Schedule on distribution of functions, Part 1 (21) and (32) mandates the National Government with the responsibility of formulating general principles of land planning, co-ordination of planning by the Counties, capacity building and technical assistance to the Counties. On the other hand, Part 2(8) allocates the function of County planning and development to County Governments. It is under these provisions that the County specific guidelines have been prepared.

The Department of Physical Planning prepared the National Spatial Plan (NSP) in response to the Kenya Vision 2030 to guide the spatial development of the country over a period of 30 years beginning in 2015.

It aims at achieving an organized, integrated, sustainable and balanced development of the country by providing a framework for better national organization and linkages between different activities within the national space.

To implement the Plan, the Counties are expected to play a key role by mainstreaming strategies, policies, and measures identified in the NSP into the County spatial planning systems.

The guidelines have identified planning policies, strategies, and measures that Plans at the County level are expected to mainstream and propagate. The policies address among others, the protection of rich agricultural land, development imbalances, conservation of environmentally sensitive areas, urban containment, and promotion of industrial development.

The guidelines provide direction on the existing potentials, the opportunities, the constraints/challenges inhibiting harnessing of the potentials, the strategies to apply, respective policies required, and the necessary measures to achieve optimal productivity, sustainability, efficiency and equity in the use of county land resources.

The guidelines are an opportunity on how best to refocus, vary and complement areas that require different approaches responding to country-specific needs and promote the livelihoods of their people, while contributing to the national aspirations of vision 2030, regional objectives of the Africa Agenda 2063, and international targets of sustainable development. The refocusing will also be handy in reviewing and making decisions on NSP which is due for review in 2025.

These guidelines are therefore a tool for enhancing this critical path and provide a direction for development planning by the Counties as they discharge their responsibility of preparing county and local physical and land use development plans. The guidelines will also ensure that the County Integrated Development Plans conform to the proposed County specific policy guidelines and measures.

DRAFT

## **Preface**

The National Spatial Plan(NSP) recognizes that Kenya is greatly endowed with massive and diverse resources distributed over the national space that require an integrated and coordinated approach for optimal productivity and sustainability.

The County Specific Guidelines have been derived from the National Spatial Plan and provide a planning framework for the integration of the NSP into the county spatial planning system. They are clear statements linking the National Spatial Plan to Inter-County, County and lower-level Physical and Land Use Development Plans and provide clarification on the anticipated sustainable development outcomes of implementing the Plan.

The County Government will adopt, develop and implement their plans based on the policies, strategies, and measures articulated in the guidelines. The realized county plans are expected to guide, harmonize and facilitate development within the county, hence contributing to the overall implementation of the NSP.

The guidelines also form an efficient compass and monitoring tool for National and County Governments to jointly pursue sustainable planning and appropriate implementation mechanisms.

For the county to be nationally competitive, there is need to balance development and promote optimal utilization of land and land-based resources as well as cultivate an integrated approach in addressing the intertwined challenges of regional imbalances/inequalities, rural development, underutilization of the available resources, uncontrolled urbanization, environmental degradation and inefficient transportation. It is imperative therefore, to prioritize the implementation of this strategic document so as to promote balanced development and competitiveness across the county.

## **Executive Summary**

The County Specific Guidelines seek to facilitate the implementation of the National Spatial Plan by outlining policies, strategies and measures to guide County spatial planning and development and promote optimal productivity, sustainability, efficiency and equity in the use of land. They provide a framework for preparation of lower level Plans including Inter-County, County and Local Physical and Land Use Development Plans.

The disconnect between National and County Spatial Planning and development has resulted in uncoordinated and unbalanced development, therefore creating a need for a clear structure that links National, Regional and Local planning and development. This is achievable through integration of the policies, strategies and measures proposed by the guidelines into County Spatial Plans, Programs and Projects, to tackle challenges of unbalanced regional development, urbanization, national competitiveness and unsustainable use of land and natural resources.

The County Specific Guidelines are organized into five chapters detailing various facets. Chapter one provides an overview, purpose and justification of preparation of the guidelines. It also outlines the objectives that the guidelines intend to achieve and details the preparation process as well as intended users. This chapter highlights the key principles that form the basis for preparation of lower level plans including public participation, livability, sustainable development, urban containment, smart urban growth among others.

Chapter two details the legal and policy provisions that the guidelines are anchored upon. They include, among others, The Constitution of Kenya, 2010, The Physical and Land Use Planning Act No.13 of 2019, County Government Act, 2012, Environmental Management and Coordination (Amendment) Act, 2015, Sessional Paper No. 01 of 2017 on National Land Use Policy and Sessional Paper No. 10 of 2012 on Kenya Vision 2030.

The third chapter analyses the county profile, detailing its location, size, bio-physical characteristics, socioeconomic status and the County's comparative advantage in relation to others. The locational context provides information on the geographical

position and bordering Counties while the biophysical context discusses the topography, hydrology and climate. The socioeconomic status indicates key economic drivers of the County and its population and demographic structure.

Chapter four presents the County specific issues and proposes development strategies to promote national competitiveness, optimal use of land and resources, rural development, balanced intra-county development and urbanization. Additionally, it provides policy guidelines and measures for County advancement.

The final chapter five focuses on implementation and adoption of the guidelines. The implementation framework identifies institutions, County development programs and projects, and further ties them with responsible actors, resources and timeframes for effective execution. It proposes a framework for ensuring that the outlined policies, strategies and measures are adequately implemented.

## Table of Contents

<b>Foreword</b> .....	ii
<b>Preface</b> .....	iv
<b>Executive Summary</b> .....	v
List of Figures .....	ix
<b>1 Introduction</b> .....	10
<b>1.1 Background</b> .....	10
<b>1.2 Purpose</b> .....	10
<b>1.3 Objectives</b> .....	11
<b>1.4 Scope</b> .....	11
<b>1.5 Justification</b> .....	12
<b>1.6 Application of the Guidelines</b> .....	12
<b>1.7 Process of preparing the Guidelines</b> .....	13
<b>1.8 Targeted users of the Guidelines</b> .....	14
<b>1.9 Key Principles</b> .....	16
<b>2 The Policy, Legal and Planning Framework for The Guidelines</b> .....	17
<b>2.1 Constitutional context</b> .....	17
<b>2.2 Policy Context</b> .....	17
<b>2.2.1 Sessional Paper No. 10 of 2012 on Kenya Vision 2030</b> .....	17
<b>2.2.2 Sessional Paper No. 01 of 2017 on National Land Use Policy</b> .....	17
<b>2.3 Legal Context</b> .....	18
<b>2.3.1 The Physical and Land Use Planning Act No. 13 of 2019</b> .....	18
<b>2.3.2 County Governments Act, 2012</b> .....	18
<b>2.3.3 Urban Areas and Cities (Amendment) Act, 2019</b> .....	18
<b>2.3.4 Environmental Management and Coordination (Amendment) Act, 2015</b> .....	18
<b>2.3.5 National Land Commission Act, 2012</b> .....	19
<b>2.4 Planning Context</b> .....	19

<b>2.4.1</b>	<b>National Spatial Plan (NSP)</b> .....	19
<b>2.4.2</b>	<b>NSP linkage to other plans</b> .....	20
<b>3</b>	<b>County Profile</b> .....	22
<b>3.1</b>	<b>Locational Context</b> .....	22
<b>3.2</b>	<b>Bio-Physical Characteristics</b> .....	24
<b>3.2.1</b>	<b>Geology and Soils</b> .....	24
<b>3.2.2</b>	<b>Agro ecological conditions</b> .....	24
<b>3.2.3</b>	<b>Climatic Conditions</b> .....	24
<b>3.3</b>	<b>Socio-economic Background</b> .....	25
<b>3.4</b>	<b>Kiambu County Comparative Advantage</b> .....	27
<b>4</b>	<b>County Specific Issues, Development Strategies and Policy Guidelines</b> .....	29
<b>4.1</b>	<b>Kiambu County Development Strategies</b> .....	29
<b>4.2</b>	<b>Spatial Policy Guidelines</b> .....	44
<b>5</b>	<b>Implementation and Adoption Of The Guidelines</b> .....	59
<b>5.1</b>	<b>Overview</b> .....	59
<b>5.2</b>	<b>Implementation Approaches</b> .....	59
<b>5.3</b>	<b>Implementation Framework</b> .....	60
<b>5.3.1</b>	<b>County Physical Planning Committee</b> .....	60
<b>5.3.2</b>	<b>County Planning Unit (CPU)</b> .....	61
<b>5.3.3</b>	<b>National Land Commission</b> .....	61
<b>5.4</b>	<b>Monitoring and Evaluation</b> .....	61
<b>5.5</b>	<b>Conclusion</b> .....	63

**List of Figures**

*Figure 1: The Scope of the Guidelines*..... 12

*Figure 4: Implementation structure of the guidelines*..... 62

DRAFT

## **1 Introduction**

### **1.1 Background**

The County Guidelines set out policies, strategies and measures that will guide the long-term spatial development of the county for a period of 30 years. They cover the entire county and defines the general trend and direction of its spatial development.

The guidelines have been developed in line with the four thematic areas as outlined in the NSP. They provide a guide to the Planning Authority at the county on how to incorporate the NSP policies, strategies and measures during the preparation of County Spatial Plans and other lower level plans like the Local Physical and Land Use Development Plans consequently implementing the NSP.

The NSP County Specific implementation guidelines summarize the County's existing potentials and opportunities, the constraints (challenges) inhibiting harnessing of the potentials, the applicable strategies and respective policies required, and the necessary measures to achieve optimal productivity, sustainability, efficiency and equity in the use of the county land resources. They act as a reference point

### **1.2 Purpose**

The purpose of the County Specific Guidelines is to provide a planning framework for mainstreaming of the National Spatial Plan to the County spatial planning system.

The guidelines are intended to assist the County enhance the implementation of the NSP by linking the proposed county specific policies, strategies and measures into the County plans, programs and projects while putting measures in place for achieving them. The guidelines inform preparation of various County Physical Plans such as the County Physical and Land Use Development Plans.

For optimal implementation of these plans, a County Integrated Development Plan (CIDP) is essential since it is a sectoral and budgetary based plan that draws its implementation programs and projects from the County Physical Plans.

### **1.3 Objectives**

The guidelines provide policies, strategies and measures to deal with challenges of regional imbalances/inequalities, rural development, underutilization of the available resources, urbanization, environmental degradation and inefficient transportation.

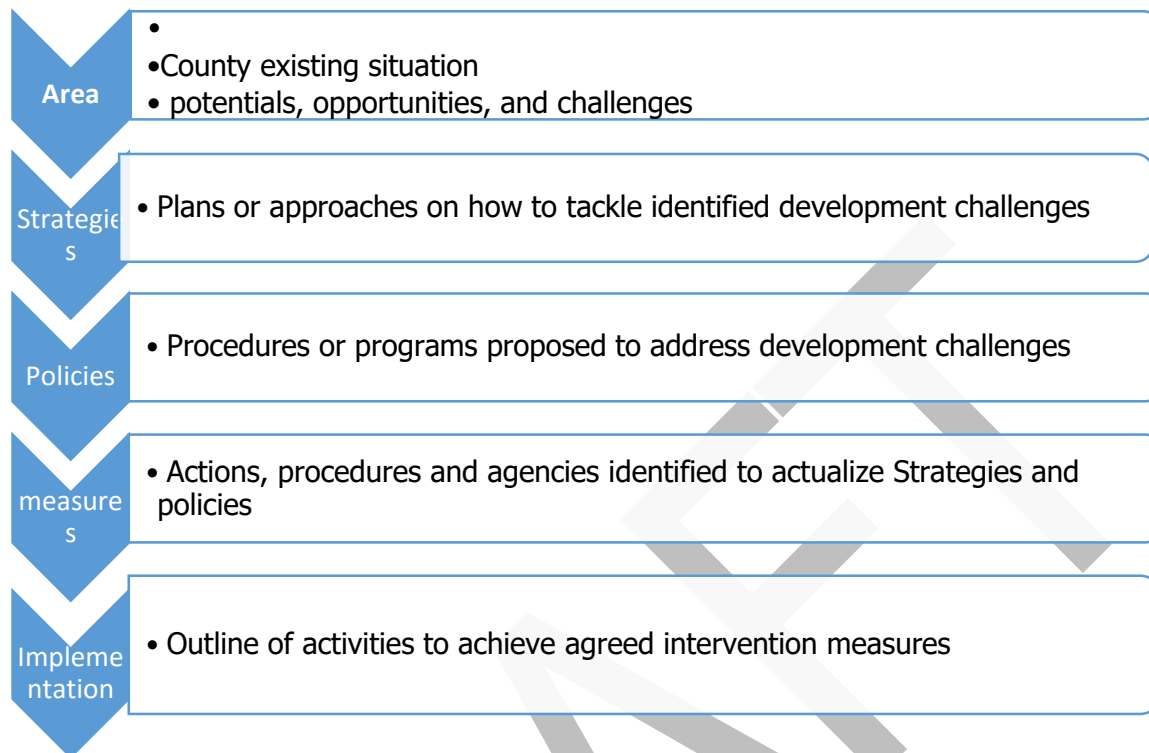
Specifically, the objectives are;

1. To sensitize the County on the provisions of the NSP
2. To promote synergy between National and County planning
3. To guide the County, implement the NSP
4. To identify the roles of the different actors in the implementation of the NSP.

### **1.4 Scope**

The guidelines comprise policies, strategies and measures specific to Kiambu County covering approximately 2037 km<sup>2</sup>. The guidelines highlight the County's existing potentials and opportunities, the constraints (challenges) inhibiting harnessing of the potentials, the applicable strategies and respective policies required, and the necessary measures, actions, approaches, plans and procedures prescribed to achieve optimal productivity, sustainability, efficiency and equity in the use of the county's land resources and an outline of activities to execute agreed interventions as captured in the National Spatial Plan, as indicated in Figure 1 below. These guidelines are effective up to the year 2045.

**Figure 1: The Scope of the Guidelines**



**Source: State Department for Physical Planning, 2022**

### **1.5 Justification**

Since the approval and launch of the NSP, its implementation has been undertaken in an uncoordinated manner hence the guidelines will provide a standardized approach for all Counties. The guidelines are also an important tool for tracking and evaluating implementation of the NSP both at National and County levels.

The preparation of County Spatial Plans and other lower-level plans which is a mandate of Counties has been slow and, in some Counties, has not begun at all. These guidelines are therefore a quick reference in preparation of county plans and for some Counties to help optimize land in the absence of these plans.

### **1.6 Application of the Guidelines**

The guidelines will be used or applied in the following ways to achieve a more sustained and coordinated development of the County;

- To effectively coordinate planning between the National and the County Government;
- To improve the County Government's capacity to formulate, coordinate and implement integrated development policies, strategies, measures, programs and projects to address spatially unbalanced development;
- To inform strategic infrastructure policy and public investment decisions which support the achievement of balanced development in the County;
- To strengthen County inter-sectoral coordination within a spatial framework and provide the private sector with a clear context in which they can make investment decisions;
- To optimize the use of land and natural resources by providing a framework for making sustainable locational choices for sustainable development and conservation of land productivity in the County.

### **1.7 Process of preparing the Guidelines**

The process involved reviewing the National Spatial Plan and identifying key issues, spatial policies, development strategies and measures specific to Kiambu County. These key issues, spatial policies, development strategies and measures will be realized through preparation of County and other lower-level plans.

Research was undertaken on various thematic areas to enrich the County specific issues and development strategies as well as policy guidelines and measures/ interventions. Further, preparation of the guidelines considered the constitutional, policy and legal provisions on physical and land use planning. Expert opinion was sought on the identified issues, policies, measures and strategies for implementation viability.

The preparation of the guidelines was identified as one of the implementation tools of the NSP, in which key NSP issues, policies, strategies and measures were translated into specific action plans, programs and projects at the County level.

## 1.8 Targeted users of the Guidelines

These Guidelines have diverse consumers and application depending on prevailing circumstances and actors as demonstrated in Table 1 below:

**Table 1: Targeted Users of the Guidelines**

User	Application
County Executive Committee Member in charge of Physical and Land Use Planning	<ul style="list-style-type: none"> <li>● Preparation of county and lower-level plans</li> <li>● Linkage of planning structures</li> <li>● Quality control of the various county plans</li> <li>● Formulate county planning policies and strategies</li> <li>● Establish county specific planning institutions</li> <li>● Coordinate and implement county plans and policies</li> </ul>
The County Director of Physical and Land Use planning	<ul style="list-style-type: none"> <li>● Advising the county government on the impact of the county specific guidelines to the county</li> <li>● Preparation of County physical and land use development plans and other lower level plans</li> <li>● Formulating County physical and land use planning policies, guidelines, strategies, and standards;</li> <li>● Issuance of development permission and other development control instruments under The Physical and Land Use Planning Act, 2013.</li> </ul>
Licensed physical and land use planners both in public and private sectors	<ul style="list-style-type: none"> <li>● Prepare, coordinate and implement spatial plans</li> <li>● Quality control of plans and consultancy services</li> <li>● Formulate policies, strategies and development guidelines</li> <li>● Dispute resolution</li> </ul>
County assembly	<ul style="list-style-type: none"> <li>● Approval of strategic sectoral budgets such as planning</li> <li>● Vetting of various County specific plans</li> </ul>

	<ul style="list-style-type: none"> <li>● Formulation and passing of County planning legislation</li> <li>● Enhance capacity to oversee the executive on spatial planning</li> </ul>
Ministries, Departments and Agencies	<ul style="list-style-type: none"> <li>● Mainstreaming relevant NSP policies, programs and projects</li> <li>● Allocation of resources to priority areas,</li> <li>● Strengthening linkages with spatial planning in resource management</li> </ul>
The National Land Commission (NLC)	<ul style="list-style-type: none"> <li>● Oversight role in land use planning to ensure efficient implementation of the NSP</li> <li>● Ensure relevant planning authorities carry out their functions as required by the law</li> </ul>
Practitioners in the built environment	<ul style="list-style-type: none"> <li>● Advance NSP relevant policies, programs and projects hence optimization of land resource</li> <li>● Appreciate sectoral Linkages to spatial planning</li> <li>● Facilitate incorporation of the policies, strategies and measures into, County specific plans</li> </ul>
Community, developers and investors	<ul style="list-style-type: none"> <li>● Comprehend the County priority sectors and County Plans and policies</li> <li>● Complement County spatial planning and implementation measures</li> <li>● Making informed investment decisions</li> </ul>
Development partners	<ul style="list-style-type: none"> <li>● Reference frame for selecting and funding spatial planning activities</li> <li>● Understand planning linkages and implementation</li> <li>● Informed development decisions</li> </ul>
Training institutions	<ul style="list-style-type: none"> <li>● Compliment the curriculum for training of spatial planners</li> <li>● Understand the planning procedures and processes</li> </ul>

## 1.9 Key Principles

The principles, as applied in the NSP, should guide and form the basis upon which the lower-level physical and land use plans are prepared. Further the principles should ensure sustainable, coordinated, and realistic development. They include the following:

- 1. Effective Public participation/engagement:** All plans shall be prepared in a participatory and consultative manner with relevant stakeholders and sectoral actors.
- 2. Urban containment/Compact cities:** Local plans shall strive to limit and control urban growth within the set urban boundaries to protect rich agricultural land, mitigate urban sprawl and reduce cost of infrastructural provision.
- 3. Livability:** The planning of urban areas shall enhance the livability index in the area of housing, environment, transportation, health, and social engagement. The urban areas must be economically viable, socially inclusive and ecologically sustainable.
- 4. Smart and green urban growth:** Plans shall promote sustainable use of energy, creation of green spaces, reduce the need for car travel, and promote use of local materials, support businesses, protection of heritage and creation of unique character.
- 5. Sustainable development:** Balancing social, economic and environmental dimensions of development and catering for current and future generations.
- 6. Promotion of ecological integrity:** Plans shall promote the protection and conservation of environmentally sensitive areas.
- 7. Promote public transportation:** Favor public transportation over private transport to ensure efficiency and functionality of urban places.
- 8. Balanced development:** Plans to ensure there/ is balanced development in the County to cure inequalities.

## **2 The Policy, Legal and Planning Framework for The Guidelines**

### **2.1 Constitutional context**

The formulation of these guidelines took into account the Constitution of Kenya 2010 aspirations and Principles. Article 66 of the Constitution of Kenya 2010 gives the State powers to regulate use of any land and property in the interest of land use planning among others. The guidelines are therefore within and in response to the aspirations, values and principles as provided for in the constitution.

### **2.2 Policy Context**

#### **2.2.1 Sessional Paper No. 10 of 2012 on Kenya Vision 2030**

Kenya Vision 2030 is the overarching national development framework which all plans should be aligned to. The preparation of all spatial plans should take cognizance of the aspirations, foundations and development concepts of the vision. The preparation of the first National Spatial Plan is identified in Kenya Vision 2030 as a flagship project and is regarded as one of the foundations for socio-economic transformation. Hence the need for linkage between national planning and county planning which will be achieved through mainstreaming NSP requirements into CSPs and other lower-level plans by preparing NSP county specific guidelines to implement the NSP at lower levels.

#### **2.2.2 Sessional Paper No. 01 of 2017 on National Land Use Policy**

The policy was formulated to address the various challenges related to land use and ensure efficient, productive and sustainable use of land. The main goal of the policy is to provide legal, administrative, institutional and technological framework for optimal utilization and productivity of land related resources in a sustainable and desirable manner at national, County and community levels.

The policy recommends the preparation of a National Spatial Plan to provide an integrated framework for the development of the country including guidelines for sustainable rural and urban planning management. The policy also provides for the preparation of planning guidelines, policies and standards to be observed by County Governments and other sectoral agencies within the frameworks of approved physical and land use development

plans. These guidelines have been prepared on this basis and they are to be observed by counties in the implementation of the National Spatial Plan.

## **2.3 Legal Context**

Various Acts of Parliament are in place to provide the legal framework for the implementation of the mandate provided for in Article 66 of the Constitution. The Physical and Land Use Planning Act, 2019, The Urban Areas and Cities (Amendment) Act, 2019, County Governments Act No. 17 of 2012, The Land Act No. 6 of 2012, National Land Commission Act No. 5 of 2012 among others. The NSP County specific guidelines are prepared in this context and meet this criterion.

### **2.3.1 The Physical and Land Use Planning Act No. 13 of 2019**

This is the overarching statute that provides for formulation of both National and County physical and land use planning policies, guidelines and standards. The Act further provides for administration, types, content, process and approval of the various types of Physical and Land Use Development Plans.

### **2.3.2 County Governments Act, 2012**

This statute mandates County Governments to carry out the planning function at the county level. The guidelines support preparation of the various county level plans that meet the recommended quality and standards.

### **2.3.3 Urban Areas and Cities (Amendment) Act, 2019**

The statute provides for classification of urban areas and cities, their governance and management, and for integrated development planning. The guidelines are a basis for preparation of these lower-level plans.

### **2.3.4 Environmental Management and Coordination (Amendment) Act, 2015**

The Act provides for the establishment of an appropriate legal and institutional framework for the management of the environment as well as guidelines relating to environmental management and prevention or abatement of environmental degradation. The guidelines take cognizance of this Act and will be implemented within the framework

### 2.3.5 National Land Commission Act, 2012

The Act mandates the National Land Commission with the management and administration of public land on behalf of the National and County Governments and to monitor and oversight physical and lands use planning in the country. The guidelines fall within the ambit of this statute and will facilitate their oversight responsibilities.

## 2.4 Planning Context

### 2.4.1 National Spatial Plan (NSP)

The National Spatial Plan (NSP) covers the whole country encompassing the exclusive economic zone. The NSP outlines policies and strategies geared towards influencing desired future distribution and organization of human activity outlined in Vision 2030 and sectoral policies and plans. It aims at achieving economic efficiency and balanced development. The various County Spatial Plans should be aligned to the policies outlined in the NSP as demonstrated in Figure 2 below.

**Figure 2: Policy Focus of the NSP**



**Source: National Spatial Plan, 2015-2045**

To actualize the NSP, a comprehensive implementation strategy has been proposed that embraces a multiplicity of actors including National Government Ministries, Departments and Agencies, County Governments and the National Land Commission. The strategy proposes the establishment of the following institutions as key in the implementation of

the Plan; The National Physical Planning Council, the National Technical Committee and the County Physical Planning Committee.

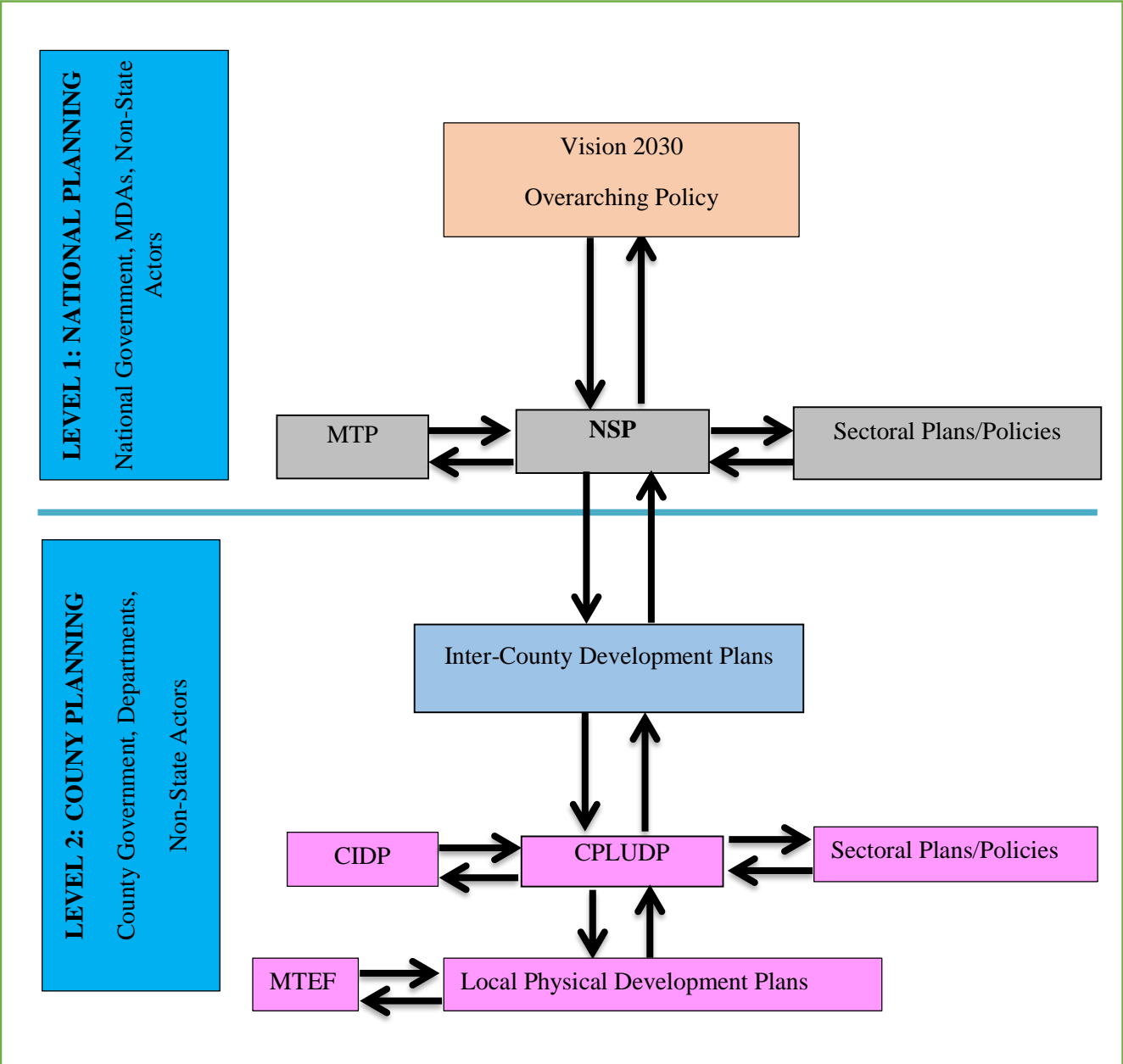
#### **2.4.2 NSP linkage to other plans**

The linkage of the National Spatial Plan (NSP) to county and other lower-level plans is key to realization of its aspirations and the successful actualization of these plans. The NSP provides a spatial framework to ground the Vision 2030 flagships projects and form a basis for coordination of County policies, strategies, measures and plans.

Inter County and County plans take into considerations the policies, measures and strategies of the NSP and implements them actualizing its aspirations.

County Physical and Land Use Development Plans provide a framework where the CIDP draws its programs and projects. The implementation of the CIDP in turn leads to realization of the objectives of the County Physical and Land Use Development Plan.

**Figure 3: NSP Linkage to other Plans**



*Source: The National Spatial Plan, 2015-2045*

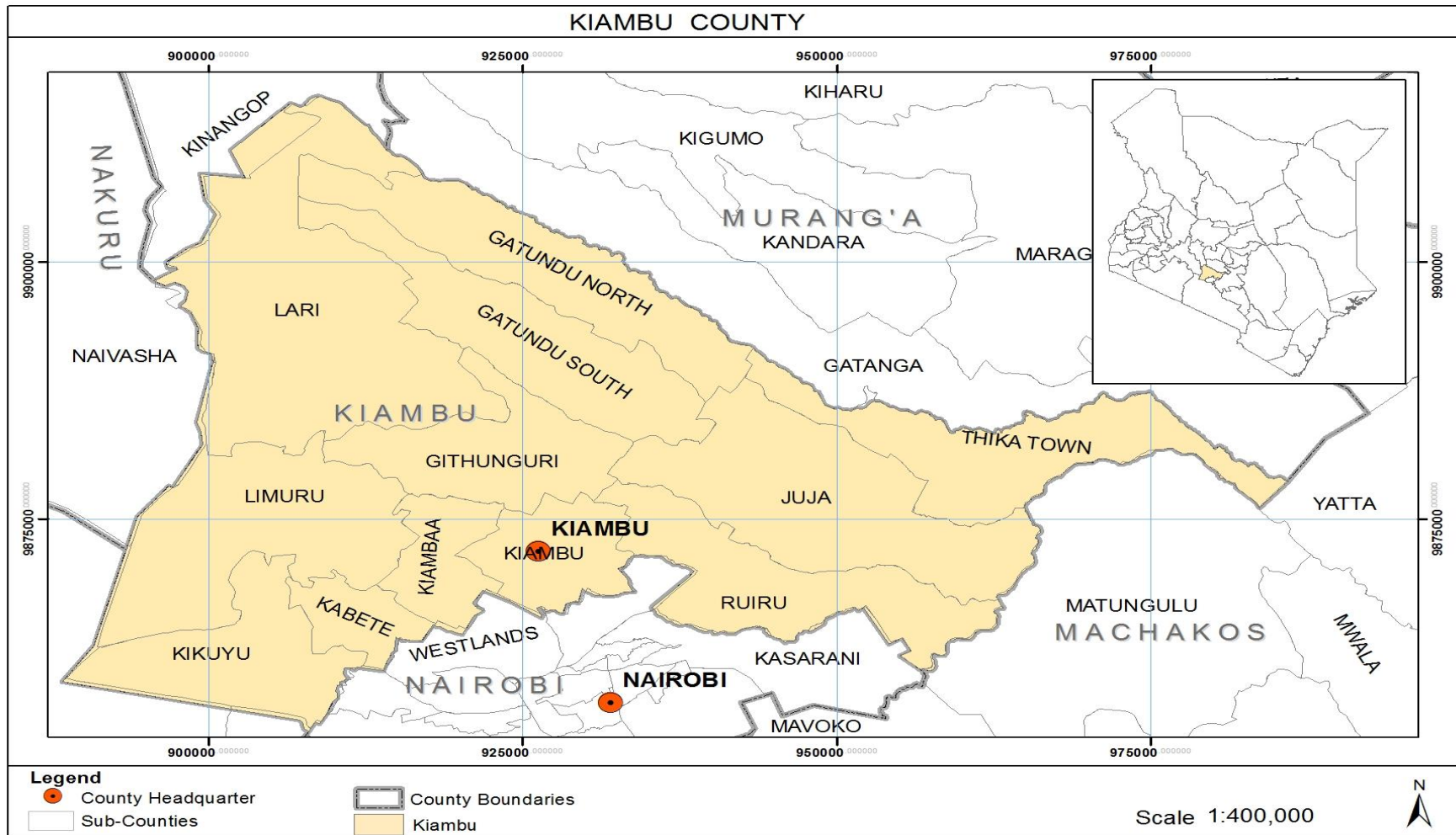
### **3 County Profile**

#### **3.1 Locational Context**

Kiambu County is in the central region of Kenya. The County is bordered by Nairobi and Kajiado Counties to the South; Machakos to the East; Murang'a to the North and North East, Nyandarua to the North West, and Nakuru to the West. The county covers a total area of 2,449 Km<sup>2</sup> and lies between latitudes 00 25'and 10 20'South of the Equator and Longitude 360 31'and 370 15'East. The County has twelve sub counties namely; Kiambu, Thika, Ruiru, Limuru, Juja, Kikuyu, Kiambaa, Kabete, Githunguri, Gatundu South, Gatundu North, and Lari

DRAFT

Map 1: Locational Context



## **3.2 Bio-Physical Characteristics**

### **3.2.1 Geology and Soils**

The county is covered by three broad categories of soils which are: high level upland soils, plateau soils and volcanic footbridges soils. Their fertility is conducive for livestock keeping and growth of food and cash crops. These soils are found in the highlands, mostly in Gatundu South, Gatundu North, Githunguri, Kiambu, Kiambaa, Lari, Kikuyu, Kabete and Limuru Constituencies. Most parts of the county are covered by soils from volcanic footbridges. These are well drained with moderate fertility.

### **3.2.2 Agro ecological conditions**

Kiambu County is categorized into four broad agro-ecological zones; Upper Highland, Lower Highland, Upper Midland and Lower Midland Zone. The Upper Highland Zone has an altitude that ranges between 1,800-2,550 meters above sea level. The upper midland zone lies between 1,300-1,500 metres above sea level. The lower midland zone partly covers Thika Town (Gatuanyaga), Limuru and Kikuyu constituencies and lies between 1,200-1,360 meters above sea level.

### **3.2.3 Climatic Conditions**

The county has two seasons of rainfall. The long rains (Mid-March to May) and short rains (mid-October to November). The annual rainfall varies with altitude, with higher areas receiving as high as 2,000 mm and lower areas of Thika Town constituency receiving as low as 600 mm. The average rainfall received by the county is 1,200 mm.

The mean temperature in the county is 26°C with temperatures ranging from 7°C in the upper highlands areas of Limuru and some parts of Gatundu North, Gatundu South, Githunguri and Kabete constituencies, to 34°C in the lower midland zone found partly in Thika Town constituency (Gatuanyaga), Kikuyu, Limuru and Kabete constituencies (Ndeiya and Karai).

### 3.3 Socio-economic Background

#### Demography

Kiambu County had a total population of 2,417,601 and 936,411 being the urban population according to the 2019 Kenya Population and Housing Census and a population density of 952 Sq. Km. Basing on the 2019 census report, the population is projected to be 4,969,402 by 2045.

*Table 1: Summary of Population Projections*

<b>Year</b>	<b>2019</b>	<b>2020</b>	<b>2025</b>	<b>2030</b>	<b>2035</b>	<b>2040</b>	<b>2045</b>
<b>Population size</b>	2,417,601	2,485,535	2,854,938	3,279,243	3,766,608	4,326,406	4,969,402
<b>Male</b>	1,187,146	1,220,398	1,401,775	1,849,405	1,849,405	2,124,266	2,439,977
<b>Female</b>	1,230,454	1,265,137	1,453,164	1,429,839	1,917,204	2,202,141	2,529,426
<b>households</b>	805,867	828,512	951,646	1,093,081	1,255,536	1,442,135	1,656,467
<b>Area</b>	2,538.6	2,538.6	2,538.6	2,538.6	2,538.6	2,538.6	2,538.6
<b>Density</b>	952	979	1124	1292	1484	1704	1958

Source: KNBS Census Report, 2019

#### Economic Activities

##### Agriculture

Agriculture is the principal economic activity contributing to 17.4% of the county's population income. It is the leading sub-sector in employment, food security, income earnings and overall contribution to the socio-economic well-being of the people. Coffee, tea and macadamia are the main cash crops in the county. The main food crops grown in the County are kales, carrots, French beans and peas.

## **Livestock**

The county is a major producer of milk, beef, mutton, leather, eggs, poultry meat, rabbits and rabbit meat, honey etc. Dairy industry is the leading enterprise with nearly 70% of the farm families keeping an average of 2-3 cows under zero grazing systems.

## **Trade and Commerce**

Trade and commerce is carried out in urban and market centers of the county where exchange of goods and services takes place. The county is well endowed with all types of businesses which include mega stores, large traders, transport operators, financial services providers among others. Financial service providers spread across the county with more than 560 service providers registered. Besides wholesale and retail trade there are a total of 18 commercial banks operating in the County. In addition, there are 31 microfinance institutions several banks, 12 insurance companies and 520 SACCOs in the county.

## **Industry**

Industrial sector is one of the major drivers of the economy for Kiambu County. The County has major industries for all sector of the economy with a concentration of Agro processing and manufacturing sectors.



combined with favorable climate makes the county highly productive for Agriculture. The land is also endowed with forests such as Karura and Kinale and water features including Ondiri swamp, Nairobi Falls, Chania and Fourteen Falls.

### **Agricultural Potential**

Kiambu County has a great potential for agriculture due to the favorable climate and fertile soils found in the county. It has potential for Horticultural crop production which plays an important role in the economy. Major vegetables include French beans, snow peas, kales, cabbage, garden peas, tomatoes, spinach and carrot among others. Herbs and spices grown include dhanian, basil, mint, rosemary, parsley and asparagus and are marketed within the country while others are for export market.

### **Tourism and filming potential**

The county has several tourist attraction sites which include Kereita forest and Great Rift Valley View Point in Lari Sub Count; PCEA Church of Torch, Ondiri Swamp and Watson Memorial in Kikuyu Sub County; Chania Falls, Fourteen falls, Mugumo Gardens and Aramati Thigira Cultural Centre in Thika Sub County; Old Italian Church and Italian Prisoners of War in Juja Sub County and Paradise Lost in Kiambu Sub County. The main activities in these sites are; site seeing, boat riding, viewing of the Great Rift Valley, zip lining, hiking trails, and social activities among others.

## **4 County Specific Issues, Development Strategies and Policy Guidelines**

### **4.1 Kiambu County Development Strategies**

The National Spatial Plan provides strategies for spatial growth and development across the country. The strategies are aimed at providing a spatial expression to Kenya Vision 2030 and other sector policies. Kiambu County is classified under Agro-Climatic Zone II with a high potential for both rain-fed and irrigated agriculture.

This section seeks to provide strategies for spatial growth and development of the county by addressing the factors that prevent the county from achieving the intended goals and objectives. The development strategies discussed are aimed at managing the global impacts, optimizing use of natural resources, creating a county balance and transforming rural areas. Specifically, the development strategies have been proposed to address the following aspects of the county's development agenda;

- Managing the national competitiveness
- Optimal use of land and other resources
- Balanced county development
- Rural development in the county
- Urbanization

The following are detailed NSP sector-specific issues and strategies that apply to Kiambu County.

## Development Strategies for Kiambu County

### Strategy 1: Towards enhancing and increasing the County's competitiveness

Potentials/Opportunities	Issues	Strategies
<p><b>Locational advantage</b></p> <ul style="list-style-type: none"> <li>• Kiambu County is strategically located within the Great Nairobi Metropolitan hence a gateway to the Country's Capital City.</li> <li>• Proximity to Nairobi City and Major road corridors i.e. (A104&amp;A2).</li> <li>• Several diplomatic offices and residences as well as a home for the United Nations</li> </ul>	<ul style="list-style-type: none"> <li>• The County's proximity to Nairobi dictates preference for competing land uses hence resulting to high land values</li> <li>• Unregulated Land fragmentation</li> <li>• Conversion of land use to real estate hence diminishing of land under agricultural use.</li> <li>• Land speculation by private developers</li> <li>• inadequate enforcement of the existing development plans</li> <li>• Some urban areas lack development plans to guide development</li> <li>• Rapid raise of unregistered land buying and selling companies</li> </ul>	<ul style="list-style-type: none"> <li>• Preparation and implementation of local physical development plans to guide land use in the County</li> <li>• Institute sanctions on idle land to encourage productive and sustainable land utilization</li> </ul>
<p><b>Thriving Real Estate</b> Thika, Juja, Ruiru, Ruaka, Runda, Kikuyu, Limuru, Kinoo, Banana/Ndenderu/Karuri, Gachie etc are most urbanized centers and serve as residential areas for the working population in Nairobi.</p>	<ul style="list-style-type: none"> <li>• High land prices</li> <li>• High housing costs hence disparity between housing supply and demand for affordable housing</li> <li>• Population increase hence existing infrastructure</li> <li>• High rate of sub-division of land</li> <li>• High rate of change of use to accommodate real estate development</li> <li>• Marked variation in housing in the urban, peri-urban and rural settlements</li> <li>• Pressure on existing infrastructure</li> <li>• Cases of building collapsing</li> <li>• Diminishing greenery and open spaces</li> </ul>	<ul style="list-style-type: none"> <li>• Government incentives and subsidies in housing provision</li> <li>• Enforcement of development control regulations for orderly development</li> <li>• Adoption of cheap construction technologies</li> <li>• Development of county housing policies and regulations</li> <li>• promoting site and service development</li> <li>• Delineating urban limits</li> </ul>

<p><b>Industrial hub</b></p> <ul style="list-style-type: none"> <li>The County has more than 58 manufacturing industries including Bidco Oil Industries, Thika Motor Vehicle dealers, Thika Pharmaceutical Manufacturers Limited, Devki Steel Mills, Broadway Bakeries, Kenblest Industry, Kel Chemicals, Delmonte LTD, Thika Rubber Industries Limited, Bata shoe factory , Macadamia Nuts, Campwell Industry, Kenya Tanning Extracts Limited and Spinners and Spinners</li> </ul>	<ul style="list-style-type: none"> <li>Pollution (water, air and solid waste) from the industries.</li> <li>High demand for water and energy for industrial use.</li> <li>Proliferation of slums to host low income earners working in the industries</li> <li>Poor infrastructure;</li> <li>Poor enforcement of the law;</li> <li>Use of inappropriate technology</li> <li>Emergence of special economic zones</li> <li>Industrial growth potential</li> </ul>	<ul style="list-style-type: none"> <li>Enhanced enforcement of existing environmental laws</li> <li>Use of clean technology.</li> <li>Carry out environmental screening before implementation of projects and programmes to assess the possible environmental effects.</li> <li>Enhancing knowledge and communication; and reducing emissions from industries.</li> <li>Identifying and setting aside land for industrial park and ICT hub</li> <li>Collaborating with the National Government to attract foreign direct investment</li> </ul>
<p><b>Transportation hub</b></p> <p>The County is relatively well connected:</p> <p>-Road A104 and A2 traverse the County</p> <ul style="list-style-type: none"> <li>Nothern By-pass</li> <li>Western By-pass which is under construction</li> <li>Southern Bypass</li> <li>Eastern Bypass</li> <li>Commuter and cargo railway</li> </ul>	<ul style="list-style-type: none"> <li>Traffic Congestion</li> <li>Pollution</li> <li>Encroachment on road reserves</li> <li>Road accidents</li> <li>Lack of integration of the various modes</li> <li>Poor condition of the air strips and internal roads</li> <li>Lack of proper public drainage systems</li> <li>Missing links</li> <li>Inadequate designated area for bus terminus</li> </ul>	<ul style="list-style-type: none"> <li>Integration of the various modes of transport such as NMT; BRT;tramps</li> <li>Expand and upgrade roads and air strips</li> <li>Promoting TOD Development</li> <li>Develop the county transportation master plan</li> </ul>

## Strategy 2: Optimizing the Use of land and natural resources

Sector	Potentials/Opportunities	Issues	Strategies
<b>Agriculture</b> (Agro-climatic Zone II)	<b>4.1.1.1.1.1.1 Crop Farming</b> <ul style="list-style-type: none"> <li>• Favorable climatic conditions</li> <li>• Fertile soils</li> <li>• Irrigation potential</li> <li>• Existing Policies</li> <li>• Readily available market for agricultural produce</li> <li>• Road network connectivity</li> <li>• Arable land</li> <li>• Availability of cheap labor</li> </ul>	<ul style="list-style-type: none"> <li>• Land fragmentation</li> <li>• Destruction of water catchment areas</li> <li>• Water pollution</li> <li>• Reduced soil fertility</li> <li>• Inadequate agricultural extension services</li> <li>• low adaptation of modern methods of farming</li> <li>• Low level of value addition</li> </ul>	<ul style="list-style-type: none"> <li>• Regulate land subdivisions</li> <li>• Protection and preservation of water catchment areas</li> <li>• Control of activities along river basins</li> <li>• Promote best farming practices</li> <li>• Increase access to agricultural extension services</li> <li>• Encourage use of modern farming methods</li> <li>• Development of agro-based industries for value addition</li> <li>• Promote compact urban areas</li> <li>• Strictly apply urban growth limits to safeguard agricultural land</li> <li>• Divert urban growth to the less agriculturally potential areas</li> <li>• Improve transportation infrastructure in agricultural areas</li> <li>• Promote eco-tourism in Tea growing areas</li> <li>• Preparation of detailed advisory plans in large scale agricultural areas</li> </ul>
	<b>Livestock Keeping</b> <ul style="list-style-type: none"> <li>• Favorable climatic condition</li> </ul>	<ul style="list-style-type: none"> <li>• Small land holding sizes</li> <li>• Poor agricultural support infrastructure</li> <li>• Effects of climate change</li> </ul>	<ul style="list-style-type: none"> <li>• Provide appropriate support infrastructure to support agriculture</li> </ul>

	<ul style="list-style-type: none"> <li>• Adequate water and pasture.</li> <li>• Ready market</li> </ul>		<ul style="list-style-type: none"> <li>• Mainstream climate change mitigation measure in the County Spatial Plan</li> <li>• Increase access to agricultural extension services</li> </ul>
	<p><b>Blue Economy (Fisheries)</b> Potential in aquaculture</p> <p>-County's vast water resources ( Riara, Kiu, Kamiti, Makuyu, Ruiru, Bathi, Gatamaiyu and Komothai, karimenu dam, kinale dam, Ruiru dam)</p> <p>-High demand for some of the indigenous fish species.</p>	<ul style="list-style-type: none"> <li>• Poor terrain</li> <li>• Water pollution</li> <li>• Inadequate extension services</li> <li>• Low level of value addition</li> <li>• Lack of storage facilities</li> </ul>	<ul style="list-style-type: none"> <li>• Promote best farming practices</li> <li>• Increase access to extension services</li> <li>• Development of industries for value addition</li> <li>• Increase number of fish ponds</li> <li>• Control water pollution</li> </ul>
<p><b>Environmental Conservation and protection Areas</b></p>	<p><b>Conservation areas (Highlands)</b></p>	<ul style="list-style-type: none"> <li>• Poor farming methods</li> <li>• Deforestation;</li> <li>• Flooding</li> <li>• Inadequate solid and liquid waste management facilities</li> <li>• Unsustainable quarrying</li> <li>• Landslides</li> <li>• Encroachment by human activities</li> <li>• Climate change and adaptability</li> </ul>	<ul style="list-style-type: none"> <li>• Strict soil erosion control measures.</li> <li>• Reclaim all the riparian areas</li> <li>• Regulation of Human activities</li> <li>• Flood mitigation and management</li> <li>• Regulation of the mining industry</li> <li>• promotion of best farming methods</li> <li>• Promotes afforestation; reforestation and agro-forestry</li> <li>• Enforcement of regulations on environmental conservation</li> </ul>

	<p><b>Protection Areas</b>  <b>Rank 1</b>  Water towers  Wetlands  Natural forests  (Kireita, Kinale, Kieni, Uplands, Ragia, Thogoto, Muguga; Kamae forest)</p>	<ul style="list-style-type: none"> <li>• Deforestation</li> <li>• Encroachment by human settlement and activities</li> <li>• Negative effects of climate change</li> <li>• Pollution</li> </ul>	<ul style="list-style-type: none"> <li>• Conservation of water towers and resources</li> <li>• Restriction of development in these areas except for the purpose of eco-tourism and research.</li> <li>• Control of human activities within and around protected areas</li> </ul>
	<p><b>Rank 2</b>  Water bodies (rivers and dams),  Mountains and parks.</p>	<ul style="list-style-type: none"> <li>• Encroachment by human settlement and activities</li> <li>• Pollution</li> <li>• Unsustainable abstraction of water</li> <li>• Frequent fires</li> <li>• Deforestation and illegal logging</li> <li>• Negative effects of climate change</li> </ul>	<ul style="list-style-type: none"> <li>• Control water abstraction</li> <li>• Control Human activities</li> <li>• Restriction of development in these areas except for tourism related activities.</li> <li>• Controlled development</li> </ul>
<p><b>Land and Natural Resources</b></p>	<ul style="list-style-type: none"> <li>• Vast land resource in area such as Juja farm; Mwalimu farm; Ndeyia etc.</li> </ul>	<ul style="list-style-type: none"> <li>• Subdivision of agricultural land in peri-urban areas</li> <li>• Unplanned expansion of urban centres</li> <li>• </li> </ul>	<ul style="list-style-type: none"> <li>• Urban growth limit to be established and enforced.</li> <li>• Preparation and implementation of local development plans</li> </ul>
	<ul style="list-style-type: none"> <li>• Untapped potential for green energy generation including wind, biogas and solar.</li> </ul>	<ul style="list-style-type: none"> <li>• Inadequate technology and exploration infrastructure</li> <li>• High costs of exploiting available natural resources</li> <li>• Lack of policy on green energy generation and distribution</li> </ul>	<ul style="list-style-type: none"> <li>• Optimal utilization of the available natural resource potential</li> <li>• Invest in appropriate technology and infrastructure</li> <li>• Undertake further exploration of the available natural resources</li> <li>• Promote production and utilization of energy from biodegradable waste materials in learning and health institutions.</li> </ul>

	<ul style="list-style-type: none"> <li>• Water: 16 Permanent rivers are Ndarugũ, Thiririka, Ruiru, Kamiti and Kiu Rivers among others</li> <li>• 5 wetlands are; Kikuyu, Lari, Theta, Kiganjo and Gacii wetlands</li> <li>• Underground water (2 main aquifers; the Nairobi Suite and Basement Athi Suite)</li> </ul>	<ul style="list-style-type: none"> <li>• Population increase</li> <li>• Inadequate technology and exploration</li> <li>• Lack of a regulatory framework in exploitation of underground water</li> <li>• Pollution</li> <li>• Inadequate water harvesting techniques.</li> </ul>	<ul style="list-style-type: none"> <li>• Optimize the use of underground water for irrigation in dry areas.</li> <li>• Invest in appropriate technology and Infrastructure</li> <li>• Regulatory framework</li> <li>• Proper waste management</li> <li>• construction of dams and exploitation of underground water sources</li> </ul>
	<ul style="list-style-type: none"> <li>• Minerals including diatomite, carbon dioxide, stone, ballast, sand, and marram</li> </ul>	<ul style="list-style-type: none"> <li>• Trade in these natural resources is largely unregulated and leads to major environmental degradation.</li> <li>• Lack of appropriate technology for sustainable exploitation of the minerals and sand</li> </ul>	<ul style="list-style-type: none"> <li>• Appropriate technology and exploration infrastructure</li> <li>• Formulation of regulatory framework in sand and mineral harvesting</li> <li>• Diversify energy products sources to reduce costs of production and enhance its reliability</li> </ul>
<b>Industrialization</b>	<ul style="list-style-type: none"> <li>• Presence of diatomite, carbon dioxide, sand, murrum, building stone and ballast</li> <li>• Agro-based industries:</li> </ul>	<ul style="list-style-type: none"> <li>• Low adoption of technology for value addition.</li> <li>• Inadequate transport infrastructure</li> <li>• Price fluctuations</li> <li>• Lack of established Value chains</li> <li>• Insufficient market for finished products</li> <li>• Lack of frameworks to safeguard Intellectual Property Rights (IPR)</li> </ul>	<ul style="list-style-type: none"> <li>• Provide appropriate technology to enhance value addition.</li> <li>• Provide adequate, supportive transport and infrastructure</li> <li>• Promote the formation of cooperatives and Saccos for resource mobilization and marketing</li> </ul>

	<ul style="list-style-type: none"> <li>- Raw agricultural products</li> <li>- Livestock products</li> </ul> <ul style="list-style-type: none"> <li>• Cottage industries (Crafts and artifacts)</li> </ul>	<ul style="list-style-type: none"> <li>• Lack of proper waste management and enforcement of the existing regulatory framework.</li> <li>• High demand and costs of energy</li> <li>• High costs of licenses</li> <li>• Lack of established Value chains</li> <li>• Undesignated industrial zones</li> </ul>	<ul style="list-style-type: none"> <li>• Sensitize players in the sector on the aspect of IPR and enforce regulations on the same</li> <li>• Develop a mineral exploration framework</li> <li>• Plan for dedicated industrial zones</li> <li>• Sensitize players in the sector on the aspect of IPR and enforce regulations on the same</li> <li>• Diversification of energy sources</li> <li>• Special tariffs</li> </ul>
<b>Tourism (Central Highlands and Rift Valley tourism Circuit)</b>	<ul style="list-style-type: none"> <li>• Kereita forest</li> <li>• Great Rift Valley View Point</li> <li>• PCEA Church of Torch,</li> <li>• Ondiri Swamp</li> <li>• Watson Memorial</li> <li>• Chania Falls,</li> <li>• Fourteen falls,</li> <li>• Mugumo Gardens and Aramati Thigira Cultural Centre</li> <li>• Old Italian Church and Italian Prisoners of War</li> <li>• Paradise Lost</li> <li>• Maumau Caves</li> <li>• Gatamaiyu Fish Camp</li> </ul>	<ul style="list-style-type: none"> <li>• Underdeveloped tourism sites and products</li> <li>• Poor marketing strategies</li> <li>• Continued over reliance on safari and anima tourism</li> <li>• Poaching and human wildlife conflicts,</li> <li>• Security concerns leading to negative travel advisories,</li> <li>• Human activities in protected areas</li> </ul>	<ul style="list-style-type: none"> <li>• Strict enforcement of the existing regulations for safeguarding protection areas.</li> <li>• Promote domestic tourism by providing incentives and subsidies</li> <li>• Increase tourism market segment</li> <li>• Open up under-utilized sites</li> <li>• Enhance security in tourism potential areas</li> <li>• Provide appropriate tourism support infrastructure and facilities</li> <li>• Conservation of wildlife and forest resources</li> <li>• Invest in conference facilities to attract business tourism</li> </ul>

	<ul style="list-style-type: none"> <li>• Various historical sites in Gatundu and Githunguri Sub Counties</li> </ul>		<ul style="list-style-type: none"> <li>• Provide appropriate tourism support infrastructure and facilities</li> <li>• Promote domestic tourism by providing incentives and subsidies</li> </ul>
<b>Transport</b>	<p><b>Road</b></p> <ul style="list-style-type: none"> <li>• A2 Thika Super Highway (Githurai-Ruiru-Juja-Thika)</li> <li>• A104 Uthiru-Kikuyu-Kamandura-Kinungi</li> <li>• Northern By-pass</li> <li>• Eastern Bypass</li> <li>• Southern Bypass</li> <li>• Proposed western Bypass</li> </ul>	<ul style="list-style-type: none"> <li>• Traffic congestion due to its proximity to Nairobi</li> <li>• Lack of Non –Motorized and Intermediate Mode of Transport (NMIMT) infrastructure</li> <li>• Weak enforcement of regulations in bodaboda industry</li> <li>• Encroachment of road reserves</li> <li>• Inadequate or lack of terminal facilities</li> <li>• Inappropriate modal integration;</li> <li>• Missing links (poor connectivity)</li> <li>• Lack of county transport policy</li> <li>• Linear development along major transport corridor</li> <li>• <b>Major Roads cutting through towns into two e.g Kikuyu</b></li> </ul>	<ul style="list-style-type: none"> <li>• Efficient road transport management</li> <li>• Repossess and revert all illegally acquired land for roads infrastructure</li> <li>• Preserve and secure adequate land for future transport and other related infrastructural Development.</li> <li>• Promote the purchase and use of high occupancy public transport vehicles</li> <li>• Enforce a regulatory standard requirement for all public transport service operators;</li> <li>• Encourage private sector participation and investment;</li> <li>• Upgrading of all the roads</li> <li>• Encouragement of use green transport;</li> <li>• Enhance traffic management systems in urban areas</li> <li>• Preparation of transportation master plan</li> </ul>

	<p><b>Railway Transport</b></p> <ul style="list-style-type: none"> <li>• 131km railway line</li> <li>• Railway stations in Githurai, Kahawa, Ruiru, Juja, Thika, Kikuyu and Limuru Railway terminus</li> </ul>	<ul style="list-style-type: none"> <li>• Non-functional of majority of railway stations</li> <li>• The stations lack of integration to other modes of transport</li> <li>• Poor condition of the rail infrastructure as a result of lack of maintenance</li> <li>• Unreliability of the railway transport</li> </ul>	<ul style="list-style-type: none"> <li>• Rehabilitate the railway and the railway stations</li> <li>• Revive and integrate the railway transport to other modes</li> <li>• Expand the railway line across the county</li> </ul>
<b>Public Utilities</b>	<p><b>Water and Sanitation</b> (16 permanent rivers, springs, dams and bore holes)</p> <ul style="list-style-type: none"> <li>• Underground water</li> <li>• Rainfall</li> <li>• Existing sewerage system</li> </ul>	<ul style="list-style-type: none"> <li>• High rate of urbanization</li> <li>• Encroachment of catchment areas</li> <li>• Water pollution</li> <li>• Inadequate sewerage treatment facilities.</li> <li>• Uncoordinated Planning and Implementation of Projects.</li> </ul>	<ul style="list-style-type: none"> <li>• Preparation and implementation of the County Spatial Plans</li> <li>• Invest in water harvesting technologies and storage facilities</li> <li>• Protection and rehabilitation of waters sources and catchments areas such as water towers and rivers</li> <li>• Develop appropriate water reticulation network</li> <li>• Establishment and upgrading of appropriate sanitation infrastructure</li> <li>• Enforcement of regulation on discharge of wastes</li> <li>• Adopting suitable technology to exploit underground water</li> </ul>
	<p><b>Solid waste management</b></p> <ul style="list-style-type: none"> <li>• Existing SWM facilities</li> <li>• Sanitary Landfill at Kangoki in Thika</li> </ul>	<ul style="list-style-type: none"> <li>• High rate of urbanization</li> <li>• Inadequate and poorly managed solid wastes management facilities</li> <li>• Unlicensed private small waste enterprise</li> <li>• Poor solid waste disposal practices</li> <li>• Lack of defined waste collection centers</li> </ul>	<ul style="list-style-type: none"> <li>• Construction and upgrading of solid waste management facilities</li> <li>• Promote the, Reduce, Reuse, Recycle (3Rs)</li> <li>• Explore other modes of solid waste management such as</li> </ul>

			landfills and recycling of waste materials. <ul style="list-style-type: none"> <li>Enhancing PPPs in waste collection through licensing and training small waste enterprises</li> <li></li> </ul>
<b>Energy</b>	<ul style="list-style-type: none"> <li>Solar</li> <li>Biogas</li> <li>Wind</li> <li>Hydro</li> </ul>	<ul style="list-style-type: none"> <li>High energy demand by the numerous industry</li> <li>Inadequate technology and infrastructure;</li> <li>High initial costs for harnessing renewable energy</li> <li>High rate of urbanization</li> <li>Lack of proper assessment and research</li> <li>Adverse environmental effects in exploiting green energy</li> <li>Low electricity connectivity especially in rural areas.</li> <li>High electricity connection tariffs</li> <li>Lack of relevant policy framework to guide tapping and use of energy sources</li> </ul>	<ul style="list-style-type: none"> <li>Develop infrastructure for harnessing, transmitting and distributing renewable energy</li> <li>Formulate policy framework to guide exploitation of green energy</li> <li>Implement Energy efficiency systems and energy demand management systems to ensure efficient and productive use of energy.</li> <li>Enforcement of ERC energy policy and Act on renewable energy</li> </ul>
<b>ICT</b>	<ul style="list-style-type: none"> <li>Existing fiber optic cable</li> <li>98 percent mobile network coverage</li> <li>19 post offices and 14 sub post offices</li> <li>1 Huduma centre in Thika</li> </ul>	<ul style="list-style-type: none"> <li>Low connectivity to ICT</li> <li>High cost of ICT infrastructure</li> <li>Lack of infrastructure to support ICT utilization.</li> </ul>	<ul style="list-style-type: none"> <li>Building ICT relevant infrastructure</li> <li>Expansion of the existing network to all urban areas and rural growth areas</li> <li>Mainstream ICT in all sectors to promote service</li> <li>Increase efficiency and productivity of the existing platforms such as Huduma center</li> </ul>

			<ul style="list-style-type: none"> <li>• Expand the fiber optic network to all urban centers</li> <li>• Improve ICT adoption.</li> <li>• Promote PPPs in developing ICT hub and infrastructure in the county</li> <li>•</li> </ul>
	<p><b>Sporting and social facilities</b></p> <ul style="list-style-type: none"> <li>• There are various sports grounds (Ruiru;Kirigiti;Ndumberi;Thika;Limuru)</li> <li>• 10 social halls</li> </ul>	<ul style="list-style-type: none"> <li>• Inadequate sporting facilities and coaching services</li> <li>• Dilapidated stadia, community cultural centers and social halls</li> <li>• Minimal involvement of youths in sporting activities (30%)</li> </ul>	<ul style="list-style-type: none"> <li>• Construction and rehabilitation of sporting facilities</li> <li>• Rehabilitate all the social facilities (stadia, cultural centres and social halls)</li> <li>• Promotion of sports among youths through establishment of talent academies.</li> <li>• Formulation of a sports management legislative policy to govern sporting activities in the County</li> <li>• Procuring of tools and equipment and hiring of coaches</li> </ul>

### Strategy 3: Balanced regional growth

Potentials/Opportunities	Issues	Strategies
<ul style="list-style-type: none"> <li>• Resource endowment</li> <li>• Transportation network</li> <li>• Enabling policy framework</li> <li>• Location within the metropolitan</li> </ul>	<ul style="list-style-type: none"> <li>• Inadequate infrastructural facilities and services</li> <li>• Under-exploitation of natural resource potential Locational opportunities</li> <li>• Weak linkages between rural and urban areas.</li> <li>• Skewed regional growth in urban areas that are around Nairobi growing faster compared to other urban areas.</li> <li>• Unequal distribution of benefits from resources</li> <li>• Ethicized governance system</li> <li>• Inadequate use of knowledge and innovation.</li> </ul>	<ul style="list-style-type: none"> <li>• Develop and enhance economic infrastructure such as water services, waste management, energy and ICT</li> <li>• Establish strong rural urban linkages</li> <li>• Encourage equitable exploitation and sound management of mineral resources while ensuring local participation for improved economic development</li> <li>• Promote investment in sustainable tourism including eco-tourism</li> <li>• Promote irrigation activities for improved productivity in quantity and quality of yield within the potential regions.</li> <li>• Promote industrialization and value addition through the provision of support infrastructure in the less developed regions as well as strengthening the better developed regions.</li> <li>• Deliberate investment in selected urban centers as development catalysts</li> </ul>

## Strategy 4: Rural development

Potentials/Opportunities	Issues	Strategies
<ul style="list-style-type: none"> <li>• Resource endowment in rural areas (agriculture, large-scale livestock production and tourism)</li> <li>• Human resource (both skilled and unskilled)</li> <li>• Enabling policy framework</li> <li>• Existing infrastructure</li> <li>• Agriculture science and technology indicators</li> <li>• Devolution</li> </ul>	<ul style="list-style-type: none"> <li>• Weak rural-urban linkages</li> <li>• Lack of focused development policies and measures</li> <li>• The dispersed nature of the human settlements,</li> <li>• Inadequate of appropriate of both physical and social infrastructure</li> </ul>	<ul style="list-style-type: none"> <li>• Decentralize county services</li> <li>• Affirmative development programs</li> <li>• promote the use locally available building material and indigenous knowledge;</li> <li>• Provide adequate and appropriate infrastructure;</li> <li>• Promote rural industrialization i.e rural tourism; mining; agro-based industries</li> <li>• Promote urban containment to reduce urban sprawl</li> <li>• Discourage uneconomical land subdivisions</li> <li>• Provide adequate infrastructure</li> </ul>

## Strategy 5: Urbanization

Potentials/Opportunities	Issues	Strategies
<ul style="list-style-type: none"> <li>• Human resource (both skilled and unskilled)</li> <li>• Enabling policy framework</li> <li>• Existing infrastructure</li> <li>• Devolution</li> </ul>	<ul style="list-style-type: none"> <li>• Rapid urbanization rates,</li> <li>• Weak rural-urban linkages</li> <li>• Deteriorating infrastructure,</li> <li>• Proliferation of informal settlements,</li> <li>• Weak and uncoordinated development control and enforcement systems.</li> <li>• Lack of enforcement of existing legislation on housing development and land use</li> <li>• Little government involvement in housing provision which has left in the hands of private developers</li> <li>• Lack of appropriate transport infrastructure and utilities</li> <li>• Poor implementation of development plans and planning policies</li> <li>• Poor solid waste management</li> <li>• Land and governance issues.</li> </ul>	<ul style="list-style-type: none"> <li>• Develop rural areas to retain the population</li> <li>• Bridge the Gap between housing demand and supply</li> <li>• Provide adequate and appropriate infrastructure;</li> <li>• Government and/or PPP to provide site and serviced properties;</li> <li>• Impose a progressive tax over and above the current land rents and rates on vacant urban land;</li> <li>• Operationalize sectional titling to provide shelter other than land.</li> <li>• Encourage pooling of land for bulky housing.</li> <li>• Promotes the principles of compact development</li> </ul>

## **4.2 Spatial Policy Guidelines**

The National Spatial Plan has stipulated policies to provide a foundation upon which to anchor the strategies enumerated therein. The primary aim is to inculcate discipline in the use of land and natural resources of the country thus stemming duplication and wastage of the resources.

This section seeks to provide the spatial policy guidelines and measures aimed at promoting the achievements of the objectives of the National Spatial Plan using its guidelines. They aim at enhancing global competitiveness and economic efficiency, optimizing the use of land and natural resources, promoting the regional balanced development and conservation of the environment. These policies are supported by a wide range of measures which spell out the specific actions to be undertaken to actualize the policy intentions. The policies shall ensure that the county is globally competitive as an investment especially in emerging sectors such as the ICT. The policies shall also be implemented by the county government's agencies responsible for planning and development control as well as the authorities responsible for land administration.

The following are the policies and measures specific to Kiambu County;

**Table 2:**NSP Policy Guidelines for Kiambu County

S.No	Sector	Policy Guidelines	Measures
1	<p><b>Framework for Development of Spatial Growth Regions</b>                      Region 1: Highlands (Western, Central and Rift Valley)                      Key Urban Centres:  <b>4.2.1.1.1.1.1</b> Gatundu, Juja, Thika Town, Ruiru, Githunguri, Kiambu, Kiambaa, Kikuyu, Kabete, Limuru, and Lari.</p>	<ul style="list-style-type: none"> <li>• Enhanced agricultural production and value addition</li> <li>• Investment in social and physical infrastructure</li> <li>• Environmental conservation</li> <li>• Intensive land use</li> <li>• Sustainable urban land use and growth</li> <li>• Balanced growth</li> <li>• Densification of built-up areas</li> </ul>	<ul style="list-style-type: none"> <li>• Infrastructure provision to support value addition initiatives and human settlement</li> <li>• Develop Small and medium urban Centres</li> <li>• Conservation of water towers and resources</li> <li>• Rural development through provision of infrastructure, agricultural sector development and related economic activities</li> <li>• Small and medium urban Centres development</li> <li>• Development and rehabilitation of key infrastructure in underserved locations</li> <li>• Services to under-served populations</li> <li>• Environmental protection</li> <li>• Conservation of wildlife and forest resources</li> </ul>
2	<p><b>National Spatial Structure</b></p>	<ul style="list-style-type: none"> <li>• The National Spatial Plan establishes the National spatial structure as a framework to achieve an integrated and sustainable physical/spatial development of the country.</li> <li>• The National Spatial Plan shall be the basis for the preparation of lower tier development plans to achieve integrated and sustainable land use planning and to promote harmony and mutual</li> </ul>	<ul style="list-style-type: none"> <li>• All Regional, County and Local physical/spatial plans shall be guided by the objectives and policies of the NSP.</li> <li>• Existing physical/spatial plans shall be reviewed to conform to the objectives and policies of NSP.</li> <li>• All sectoral policies shall take cognizance of the objectives and policies of NSP</li> <li>• The review of the 5 year medium term plans (MTP's) shall take into account provisions of the NSP.</li> <li>• Planning authorities at the national and county levels shall be supported with adequate human, financial and technical resources to promote sustainable Physical/spatial planning and development.</li> </ul>

		cooperation in planning in Kenya.	
<b>3</b>	<b>Modernizing Agriculture (Agro-climatic zone II)</b>	Agro climatic zones I, II, III shall be safeguarded against the threat of urbanization and land subdivision	<ul style="list-style-type: none"> <li>• Prepare and implement County spatial plan and other local plans such as integrated development plans</li> <li>• Set urban growth limits during preparation of urban spatial development plans</li> <li>• High potential agricultural land falling between urban areas shall be strictly designated for agriculture production purposes</li> <li>• Encourage location of new urban developments in existing brownfield areas, low potential areas and less urbanized areas</li> </ul>
		The irrigation potential of the country shall be optimized by promoting investment in irrigation agriculture for high value crops	<ul style="list-style-type: none"> <li>• Rehabilitate and expand existing irrigation schemes</li> <li>• Undertake research to identify the irrigation potential across the County</li> <li>• Establish new irrigation areas with irrigation potential</li> <li>• Encourage small holder irrigation schemes through sensitization campaigns and reducing the cost of irrigation equipment</li> </ul>
		The use of land in high agricultural potential areas shall be intensified to increase productivity	<ul style="list-style-type: none"> <li>• Adoption of modern agricultural production methods and practices</li> <li>• Upscale the adoption of technology in agricultural production</li> <li>• Encourage mixed farming</li> <li>• Promote agri-business</li> <li>• Provide appropriate infrastructure to support the exploitation of the high potential areas</li> </ul>
		The fishing potential of the country shall be optimized to increase the food stock and export earnings	<ul style="list-style-type: none"> <li>• Encourage small holder farmers to establish fish farms in areas with potential throughout the country</li> <li>• Undertake research to identify the areas with potential for fish farming</li> <li>• Provide appropriate infrastructure to support the fishing industry</li> </ul>

			<ul style="list-style-type: none"> <li>• Increase access to fishing equipment by making them affordable through reduced taxation</li> </ul>
<b>4</b>	<b>Conserving the natural environment</b>	All environmentally sensitive areas shall be protected and utilized in an sustainable manner	<p><b>Mountain ecosystems</b></p> <ul style="list-style-type: none"> <li>• Generate and strengthen knowledge about the ecology and sustainable management of mountain ecosystems.</li> <li>• Develop and implement strategies and action plans for sustainable management of mountain ecosystems.</li> <li>• Promote integrated watershed management and alternative livelihood opportunities to enhance community participation and empowerment in the conservation and management of mountain ecosystems.</li> <li>• Adopt appropriate land use planning and watershed management practices for sustainable development of mountain ecosystems.</li> <li>• Ensure all water catchment areas are zoned and managed as protected areas and free from excision.</li> <li>• Involve and empower communities in the management of mountain ecosystems.</li> </ul> <p><b>Forest Ecosystems</b></p> <ul style="list-style-type: none"> <li>• Prepare integrated forest resource management plans to promote sustainable use of forest resources</li> <li>• Develop and implement a national strategy for rehabilitation and restoration of degraded natural and indigenous forests and protect water catchment areas with active community involvement/participation</li> <li>• Support effective implementation of the forest and other related policies and laws.</li> <li>• Develop and implement county local standards, principles and criteria of sustainable forest management</li> </ul>

			<ul style="list-style-type: none"> <li>• Encourage development and implementation of appropriate forestry-based investment programmes and projects</li> <li>• Involve and empower communities in the management of forest ecosystems</li> <li>• Determine potential areas for farm/agro and dry land forestry</li> <li>• Promote afforestation and agro-forestry through County Spatial Plans</li> <li>• Gazette, protect and rehabilitate degraded forests through re-afforestation by replanting trees on land that were previously forests.</li> <li>• Enforce legal and regulatory provisions for forest management and protection.</li> <li>• Indigenous forests shall be identified and protected from logging.</li> <li>• Involve and empower communities in the management of forest ecosystems through controlled logging, agro-forestry, re-forestation and natural regeneration</li> <li>• Encourage development and implementation of appropriate forestry-based Investment programmes and projects.</li> </ul>
		<p>All government agencies shall integrate environmental concerns in policy formulation, resource planning and development processes.</p>	<ul style="list-style-type: none"> <li>• Prepare and implement integrated management plans for Environmental sensitive areas</li> <li>• Support effective implementation of related policies and laws.</li> <li>• Involve and empower communities in the management of environmentally sensitive areas and promote environmental education and awareness</li> <li>• Strengthen Environmental Governance and harmonize sectoral policies, legislation and regulations.</li> </ul>

			<ul style="list-style-type: none"> <li>• Identify species which are rare and endangered with the aim of protecting them from extinction through the establishment, where necessary, of more biosphere reserves, national parks and reserves, botanical gardens, arboreta, and through their propagation and captive breeding.</li> <li>• Jointly develop and implement harmonized regional plans for sustainable management of trans-boundary resources</li> </ul>
		<ul style="list-style-type: none"> <li>• Community participation shall be mainstreamed in the protection and</li> <li>• conservation of natural resources</li> </ul>	<ul style="list-style-type: none"> <li>• Sensitize communities living around the natural resources on the need for conservation of the resources</li> <li>• Develop mechanisms for sharing benefits accruing from the natural resources by the conservation agencies in consultation with the local communities</li> <li>• Identify and map all disaster prone areas for sustainable management.</li> </ul>
		<ul style="list-style-type: none"> <li>• County Physical Planning departments shall mainstream climate change into their planning processes.</li> </ul>	<ul style="list-style-type: none"> <li>• Build and strengthen research capacity on climate change and related environmental issues.</li> <li>• Promote water conservation including reversal of degradation of the main water towers and rehabilitation and restoration of all water catchments.</li> <li>• Develop and promote the use of green energy.</li> </ul>
<b>5</b>	<b>Rapid Industrialization</b>	<p>The cluster development strategy shall be promoted to focus on proximity to raw materials and markets of region specific products</p>	<ul style="list-style-type: none"> <li>• Mineral-based industries to be located in-situ where the minerals are found</li> <li>• Locate cottage industries and crafts in-situ</li> <li>• Establish infant industries in rural and rangeland areas for value addition and investments opportunities</li> <li>• Promote value addition in processing of local produce.</li> <li>• Locate agro-based industries in agro climatic zones I, II and III</li> </ul>
		<p>Specific sites for industrial development shall be identified,</p>	<ul style="list-style-type: none"> <li>• Plan and set aside land for industrial development in every county</li> </ul>

		planned and serviced with the appropriate infrastructure	<ul style="list-style-type: none"> <li>• Develop SME and Industrial Parks in all sub counties</li> <li>• Provide appropriate support and transportation infrastructure for industrial activities</li> <li>• Integrate the industrialization process and environment conservation</li> <li>• Increase availability of clean water and improve sanitation</li> </ul>
		Adequate and affordable energy supply for the industrial sector shall be provided	<ul style="list-style-type: none"> <li>• Provide reliable and affordable energy infrastructure by extending the national grid network</li> <li>• Promote the adoption of energy efficient technologies</li> </ul>
<b>6</b>	Diversifying Tourism (Central and Great Rift Valley Tourism Circuit)	The NSP shall promote diversification of tourism by offering diverse products in the different tourist circuits	<ul style="list-style-type: none"> <li>• Central and Great Rift Valley Circuit shall be developed to offer; eco-tourism, sport tourism, cultural tourism, adventure tourism, medical tourism, MICE, cultural and heritage, agro tourism, safari and wildlife, archeological and historical, filming, and urban tourism, high yield tourism segment through development of international-branded facilities.</li> </ul>
		Appropriate Tourism support infrastructure and facilities shall be provided	<ul style="list-style-type: none"> <li>• Carry out an inventory of tourism infrastructure and facilities in Central and Great Rift Valley Circuit</li> <li>• Formulate planning regulations and standards to guide tourist specific infrastructure and facilities.</li> <li>• Develop the requisite tourism support infrastructure and facilities.</li> <li>• Upgrade the existing tourism facilities and infrastructure.</li> <li>• Adopt low carbon and green tourism infrastructure options.</li> <li>• Increase bed capacity in tourist attraction areas and towns in Kiambu County</li> <li>• Provide and upgrade the ICT infrastructure to support tourism.</li> </ul>
		Tourist attraction areas and sites shall be conserved and protected	<ul style="list-style-type: none"> <li>• Identify, map and protect all wildlife migratory corridors.</li> </ul>

			<ul style="list-style-type: none"> <li>• Prepare subject plans for the wildlife migratory and dispersal corridors and wildlife habitat as a unit.</li> <li>• Prohibit the location of incompatible land use activities.</li> <li>• Strictly regulate developments within the tourist attraction sites.</li> <li>• Protect wildlife watering points</li> </ul>
		Governance of the tourism sector shall be enhanced.	<ul style="list-style-type: none"> <li>• Prepare integrated spatial plans to guide development of the tourism sector.</li> <li>• Prepare and implement measures on land use, wildlife and tourism;</li> <li>• Undertake research to identify more tourist attraction areas and sites, inventorize Agro tourism sites</li> <li>• Identify and map potential eco-tourism development sites;</li> <li>• Undertake awareness campaigns on the value of eco-tourism to the industry players both locally and globally;</li> <li>• Develop standards for eco-tourism establishments;</li> <li>• Facilitate access to eco-tourism development incentives</li> </ul>
		Spatial Development plans shall be prepared to guide implementation of the flagship projects for the tourism sector	<ul style="list-style-type: none"> <li>• Prepare local physical development plans to actualize the Premium Parks Initiative</li> <li>• Prepare ecosystem area plans for all parks and reserves in conjunction with respective county governments to address problems of unplanned development of lodges and poor access roads.</li> </ul>
<b>7</b>	<b>Managing Human Settlements</b>	Alternative urban areas shall be developed and supported to promote balanced regional Development and spur growth.	<ul style="list-style-type: none"> <li>• Develop urban centres as intermediate centres between the rural and the principal towns.</li> <li>• Provide principal towns and urban centres with the requisite infrastructure to support their growth and development.</li> </ul>

			<ul style="list-style-type: none"> <li>• Prepare local physical development plans to define the urban growth limits for the principal urban centres.</li> <li>• Enforce strict regulations and justifications on development control processes.</li> <li>• Intensify the supply of urban infrastructure within the area contained to make it attractive for investment</li> </ul>
		Alternative urban areas shall be developed and supported to promote balanced regional development and spur growth.	<ul style="list-style-type: none"> <li>• Develop Kiambu as a principal town in accordance with its regional potentials and be promoted as an alternative growth area.</li> <li>• Develop urban centres as intermediate centres between the rural and the principal towns.</li> <li>• Provide principal towns and urban centres with the requisite infrastructure to support their growth and development.</li> <li>• Prepare local physical development plans to define the urban growth limits for the principal urban centres.</li> <li>• Enforce strict regulations and justifications on development control processes.</li> <li>• Intensify the supply of urban infrastructure within the area contained to make it attractive for investment.</li> </ul>
		Rural growth centres shall be rationalized and supported to act as central places and settlements clustered to free the rich agricultural land	<ul style="list-style-type: none"> <li>• Provide basic services such as extension services, health facilities, markets, sanitation, water, power and education to improve the quality of rural life.</li> <li>• Undertake sensitization and awareness campaigns on the need to conserve agricultural land by discouraging land fragmentation.</li> <li>• Progressively link growth centres by means of secondary roads as a minimum.</li> <li>• Promote sectors such as agriculture that have potential to stimulate rural development</li> </ul>

			<ul style="list-style-type: none"> <li>• Incorporate disaster management and mitigation in planning of rural settlements.</li> </ul>
		Human settlements shall be developed in line with environmental and natural resources conservation to improve living conditions	<ul style="list-style-type: none"> <li>• Map out and prohibit development in environmental sensitive areas.</li> <li>• Plan and provide an integrated waste management system.</li> <li>• Prepare and implement zoning guidelines to ensure compatibility of land uses in human settlement areas.</li> <li>• Promote social organization and environmental awareness through the participation of local communities in the identification of public service needs.</li> <li>• Strengthen the capacity of the local governing bodies to effectively deal with environmental challenges associated with rapid and sound urban growth.</li> <li>• Empower community groups, nongovernmental organizations and individuals to assume responsibility and authority for managing and enhancing their environment.</li> <li>• Deliberately provide adequate and functional open spaces in urban places.</li> <li>• Prescribe planning standards for open/green space on private development.</li> <li>• Encourage non-motorized transport (NMT) and re-introduction of public transport in major cities and urban centres</li> <li>• Aim for zero carbon building standards by 2032 and ensure all buildings meet energy efficiency criteria</li> </ul>
		4.2.1.1.1.1.2 Provision of an efficient, reliable and effective transport system for human settlements	<ul style="list-style-type: none"> <li>• Plan and develop an integrated urban transport system to enhance provision of relevant modal split.</li> <li>• Integrate land use and transportation planning</li> <li>• Establish an effective transport management system</li> </ul>

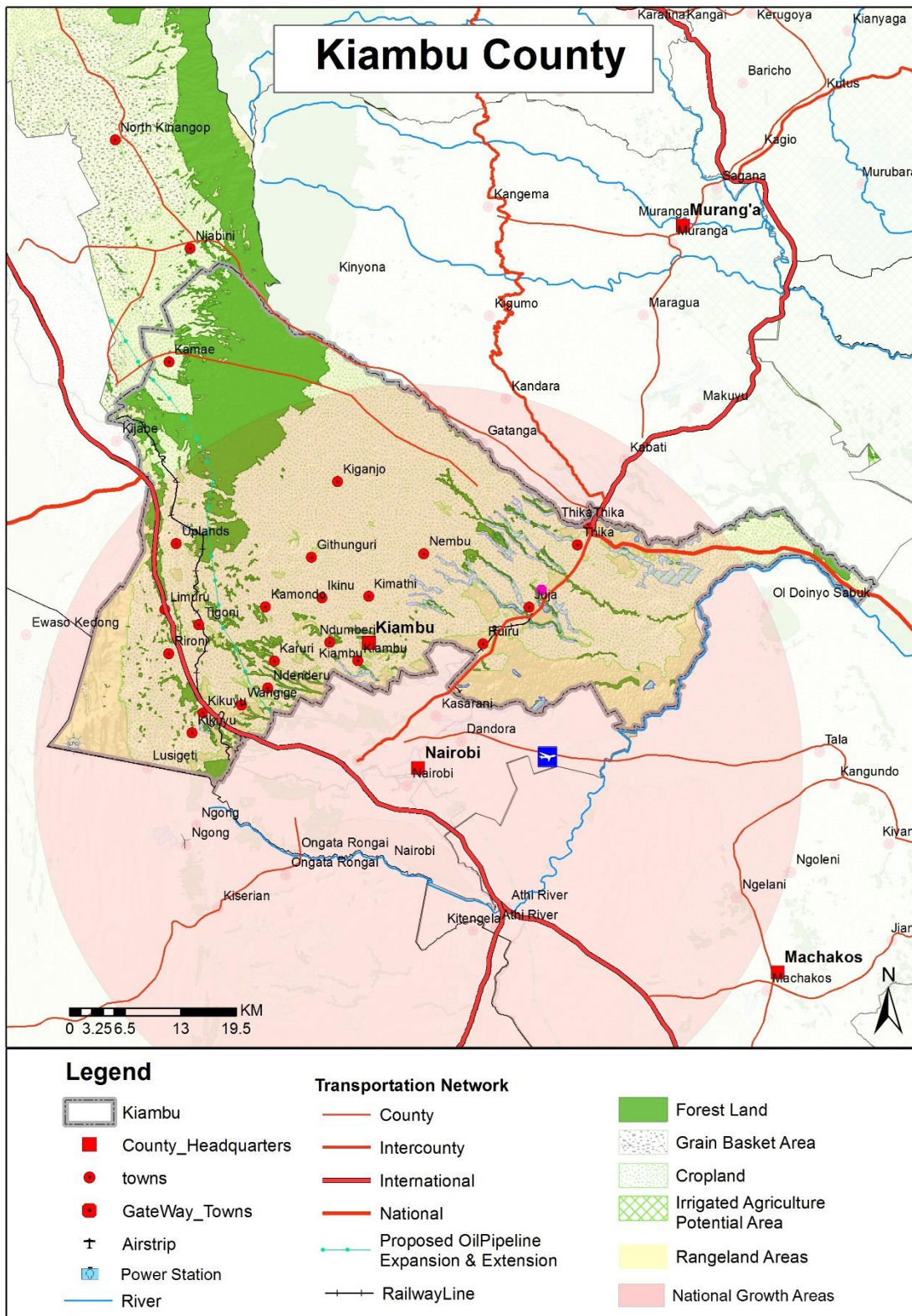
			<ul style="list-style-type: none"> <li>• Improve the road conditions and expand the linkages to human settlements</li> <li>• Integrate NMT with existing transport infrastructure.</li> <li>• Establish an efficient mass transit public transportation system</li> <li>• Incorporate the concept of green energy in transport systems planning and redevelopment.</li> <li>• Prepare a transportation strategy for each urban area or city, as part of the integrated urban development plan required under the Urban Areas and Cities Act 2011, in collaboration with the National Government.</li> </ul>
		Improve the management and governance of Human Settlements particularly the urban areas	<ul style="list-style-type: none"> <li>• Build institutional capacities of the urban areas management boards</li> <li>• Integrate technology in management of human settlements to strengthen urban data systems.</li> <li>• Coordinate and strengthen development control mechanisms</li> <li>• Provide adequate human resource and improve their capacity in management of human settlements in the sectors of; housing, settlement, land, infrastructure, construction, energy and disaster management</li> <li>• Conduct research into migration trends to inform effective planning and provision of human settlements.</li> <li>• Enable public private partnerships in the provision of housing.</li> </ul>
		4.2.1.1.1.3 Upgrade of the existing settlements and forestalling of new informal settlements	<ul style="list-style-type: none"> <li>• Encourage redistribution of urban income through integrated development planning encompassing social, economic and physical factors</li> <li>• Prepare Local Physical Development Plans for purpose of renewal and/or redevelopment of the informal settlements.</li> </ul>

			<ul style="list-style-type: none"> <li>• Formulate a housing policy that will focus on providing affordable and accessible housing.</li> <li>• Ease the process of issuance of ownership documents to the legal owners in order to encourage formal developments</li> <li>• Enforce development control regulations and adherence to building code and standards.</li> <li>• Enhance coordination of donor agencies activities within informal settlements by relevant authorities for optimal returns.</li> </ul>
		<ul style="list-style-type: none"> <li>• Peri-urban development shall be managed and controlled to contain urban growth within its limits and protect rural land uses.</li> </ul>	<ul style="list-style-type: none"> <li>• Formulate and implement planning legislation on peri-urban planning and management</li> <li>• Institute sanctions on idle land to encourage productive and sustainable land utilization.</li> <li>• Create green belt buffer zones to define the urban and peri-urban areas.</li> <li>• Give local farmers incentives to preserve agricultural land by promoting local production and providing ready markets for agricultural produce</li> </ul>
<b>8</b>	<b>Integrating the Transportation network</b>	<ul style="list-style-type: none"> <li>• An integrated and functional transport system for the national and urban areas shall be developed.</li> </ul>	<ul style="list-style-type: none"> <li>• Provide access, expand and linkage, between county headquarters (60M); county headquarters and sub county headquarters (30M); and for local access and link them to national transportation corridors. The road to be tarmacked (bitumen standard)</li> </ul>
		<ul style="list-style-type: none"> <li>• An efficient and affordable Mass Public Transport for all urban areas in the country shall be developed</li> </ul>	<ul style="list-style-type: none"> <li>• Integrate land use with urban transport planning for all urban areas.</li> <li>• Undertake research on the optimal modal split for various categories of urban centers</li> <li>• Design and develop an integrated transport network that considers all different modes of transport</li> <li>• Provide public transport system based on bus rapid transport system for the principal towns of Kiambu.</li> <li>• Designate, harmonize and regulate terminal, interchange and pick-up and drop-off facilities and digitize travel schedules and routes in all such facilities</li> </ul>

			<ul style="list-style-type: none"> <li>Construct bypasses and ring roads in main urban centres to divert through traffic from the CBDs (Central Business Districts);</li> </ul>
		<ul style="list-style-type: none"> <li>Provision of an integrated, balanced and environmentally sound urban transport system in which all modes efficiently play their roles shall be developed</li> </ul>	<ul style="list-style-type: none"> <li>Enact transport measures to regulate planning and management of public and private transport</li> <li>Develop an integrated transport network in county, and urban development plans</li> <li>Each county government to come up with measures to limit use of private transport and maximize on public transport</li> <li>Implement a 24-hour economy to distribute traffic flows on urban roads, alter working shifts and save on cost of travel time.</li> </ul>
9	<b>Providing Appropriate Infrastructure</b>	<ul style="list-style-type: none"> <li>Safe, adequate, reliable and <b>affordable solar energy</b> for both Urban and rural settlements shall be provided.</li> </ul>	<ul style="list-style-type: none"> <li>Tap into solar and wind energy for large scale production in Kiambu County for sale to the national grid.</li> <li>Mainstream and enforce green energy options in the design of buildings</li> <li>Provide safe connections for all informal settlements in urban areas for safety. Measures need to be developed that aim to be pro-poor by increasing sensitivity to low-income urban residents</li> </ul>
		<ul style="list-style-type: none"> <li>Expansion and improvement of <b>water reticulation systems</b> to facilitate the access to clean, safe, adequate, reliable and affordable water in human settlements shall be promoted</li> </ul>	<ul style="list-style-type: none"> <li>Incorporate water provision in all physical development plans</li> <li>Restore all the water towers.</li> <li>Build water kiosks and yard taps, develop water supply pipeline systems and sewers, and a comprehensive mapping of all water supplies systems in the informal settlements</li> </ul>
		<ul style="list-style-type: none"> <li>A network of functional, efficient, safe, accessible and sustainable <b>national health referral infrastructure</b> shall be established.</li> </ul>	<ul style="list-style-type: none"> <li>Increase the utilization of services at lower levels of the health services and reduce self-referral to the higher levels of care;</li> </ul>

			<ul style="list-style-type: none"> <li>• Develop the service provider’s capacity to offer services and appropriately refer at each level of the healthcare system;</li> <li>• Improve the system’s ability to transfer clients and specimens between the different levels of the health care system;</li> </ul>
		<ul style="list-style-type: none"> <li>• Appropriate, quality, efficient and cost effective <b>ICT infrastructure</b> in both rural and urban areas shall be promoted</li> </ul>	<ul style="list-style-type: none"> <li>• Develop and upgrade ICT Infrastructure in all counties</li> <li>• Extend ICT infrastructure to cover all the rural and local growth centres.</li> <li>• Mainstream use of ICT in all levels of government and the private sector (e-government).</li> <li>• Establish E-Centre in market centres</li> </ul>
		<ul style="list-style-type: none"> <li>• The expansion of <b>sewerage systems and waste management facilities</b> shall be promoted to improve sanitation in human settlements</li> </ul>	<ul style="list-style-type: none"> <li>• The county spatial plans to provide sewer systems reticulation plan</li> <li>• Enacting regulations which incorporate private public partnerships in infrastructure investment</li> <li>• Adopting modern technology solutions for sewerage treatment works in rural and low density areas</li> <li>• Rehabilitating storm water drainage systems in all urban areas</li> </ul>
		<ul style="list-style-type: none"> <li>• <b>Sporting infrastructure</b> shall be planned, developed, maintained and the existing rehabilitated to promote sports development.</li> </ul>	<ul style="list-style-type: none"> <li>• Establish County Sports Talent Centers to act as feeds to the international centre to scout, nurture and develop sports talents at the sub-national levels.</li> <li>• Rehabilitate all the sports grounds within the county</li> </ul>

**Map 3: NSP Proposals for Kiambu County**



Source: National Physical Planning Department, 2022

## **5 Implementation and Adoption Of The Guidelines**

### **5.1 Overview**

The implementation framework identifies activities and further ties them with responsible actors, resources and timeframes adequate for their execution. It constitutes a deliberately established method, means or system of ensuring that the policies, strategies and measures outlined in the guidelines are continuously and consistently executed to achieve their objectives.

To effectively implement the guidelines, the various sectors, actors and levels of planning have been identified and have to work together and the mandate of the sectors at the National and County levels of planning have to be integrated.

### **5.2 Implementation Approaches**

The County Specific Guidelines will be implemented through various approaches including:

1. Preparation of spatial plans to integrate and conform to the proposals of the County Guidelines. The plans include:
  - Inter-County Physical and Land Use Development Plans for Metropolitan regions, conservation zones, river basins, water towers, coastal ecosystems, trans-boundary resource areas and transport corridors, among others.
  - County Physical and Land Use Development Plans.
  - Local Physical and Land Use Development plans for Cities, Urban areas, special area plans, subject plans and detailed neighborhood plans, among others.
  - Sectoral plans
2. Integration of the guideline policies, strategies and measures into the County sector plans, programs and projects. Ministries, Departments and Agencies (MDAs), County and National Departments identified in the plan to administer the policies, strategies and measures are required to translate them into action plans, programmes and projects and to include them in their subsequent sector plans.
3. Formulation of policies, regulations and standards to guide development control

### **5.3 Implementation Framework**

The implementation of the various policies, strategies, measures, programmes and projects under these Guidelines will involve a wide range of actors. It will require a coordinated approach and partnership between the National and County Governments and non-state actors. It may require re-engineering of institutions and a number of actors to undertake the implementation through a harmonized approach.

The National Spatial Plan identified a multi-levelled framework for implementation of the plan that incorporates all levels of actors. In this regard, the institutions identified in the NSP to undertake implementation of the plan at County-level shall also be mandated to ensure implementation of this Guidelines.

The following are the Institutions mandated to ensure implementation of the County Specific guidelines;

#### **5.3.1 County Physical Planning Committee**

The role of the County Planning Committee shall be to ensure aspirations of the guidelines are articulated in preparation of the County Spatial Plans, County Integrated Development Plans and Local Physical and Land Use Development Plans.

The composition of this committee consists of;

- i. The Governor who will be the Chairperson,
- ii. the Deputy Governor,
- iii. the County Executive Committee Members from various sectors
- iv. Directors from various relevant County Departments including Lands and Physical Planning, Economic planning, Agriculture, Industrialization, Tourism, Environment, Transport and Infrastructure

The functions of the committee include;

- 1) To promote effective integration between physical, economic and sectoral planning within the framework of county development policies.
- 2) To provide policy guidance for the implementation of strategic spatial projects
- 3) To ensure that the guidelines policies and measures are mainstreamed in the various county plans.
- 4) To mobilize resource for implementation of the Guidelines.

### **5.3.2 County Planning Unit (CPU)**

The technical Unit shall provide technical support to the various implementing County departments on issues relating to physical planning.

The CPU shall;

- i. Monitor the Implementation of the guidelines.
- ii. To disseminate components of the guidelines to the various county departments.
- iii. Update the County Physical Planning Committee on a regular basis on the implementation of the guidelines.

The County Director of Physical Planning shall be responsible for preparation of an annual state of planning report which shall among other things appraise the status of implementation of the guidelines.

### **5.3.3 National Land Commission**

The National Land Commission shall play its oversight role in land use planning to ensure efficient implementation of the NSP and the guidelines. Other functions of the Commission in the implementation of the NSP and the guidelines include the following:

- To formulate mechanisms and parameters for monitoring and overseeing land use planning.

- i. To ensure that relevant planning authorities carry out their functions as required by law.
- ii. To make recommendations for improvements of the planning systems in the county.
- iii. To mobilize resources to support physical/land use planning.

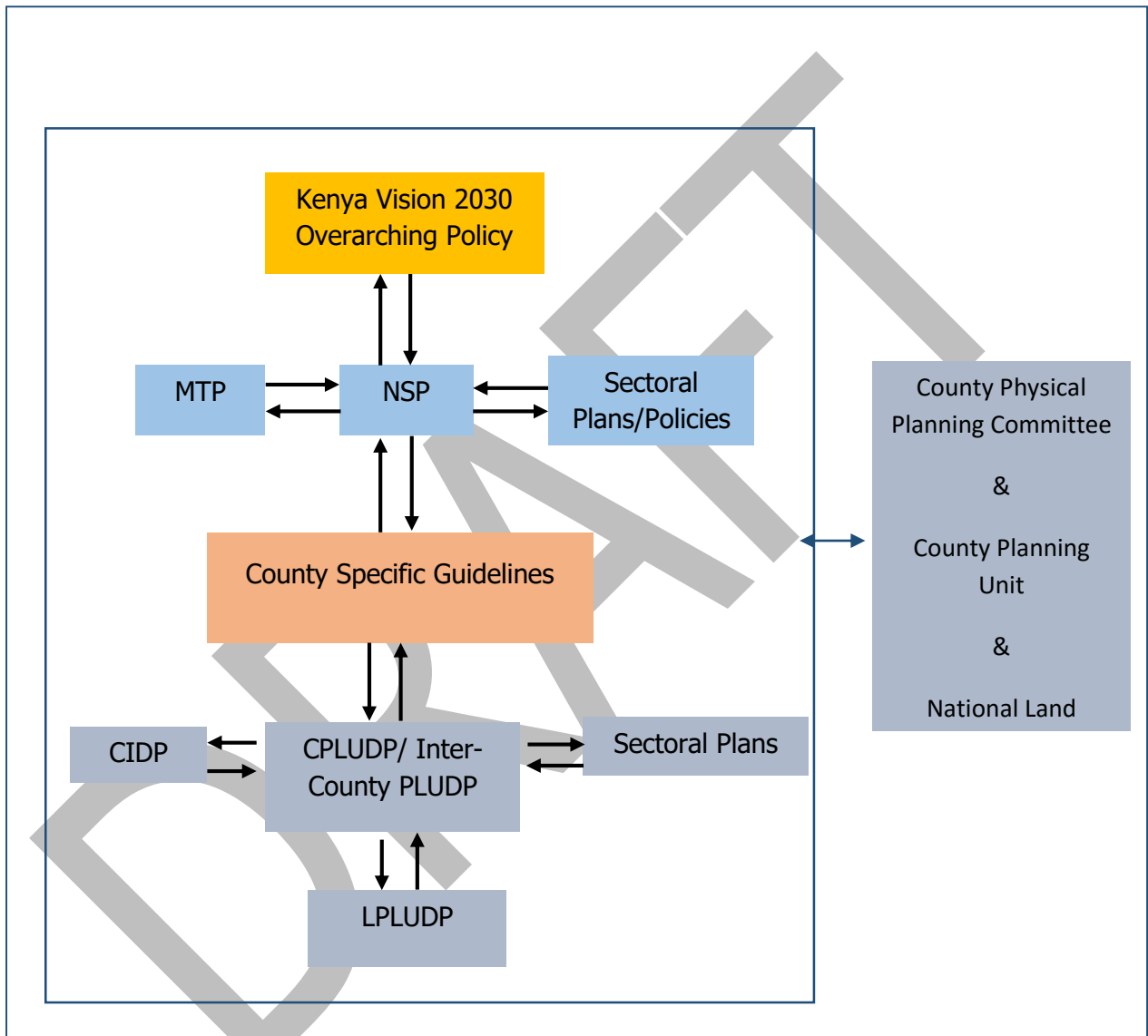
## **5.4 Monitoring and Evaluation**

Implementation of the guidelines will be monitored and evaluated to measure both outputs and outcomes and ensure that the intended actions are implemented in a timely manner. To facilitate attainment of the objectives of the guidelines, performance indicators will be developed by the County Physical Planning Department

for efficient monitoring. Periodic reports will be prepared in relation to progress being made in their implementation.

The graphic below illustrates the implementation structure for County Specific guidelines.

**Figure 2: Implementation structure of the guidelines**



## **5.5 Conclusion**

The application of these guidelines will be undertaken by a number of actors and hence the need for a coordinated approach. The lead agency will be Kiambu County Government which will be responsible for implementing various county specific initiatives proposed by the guidelines.

The National Government, County Government of Kiambu, the private sector and the general public will be critical in actualizing the objectives of these guidelines. The County Physical Planning Committee shall develop a communication strategy to enhance the synergies.

The National Department of Physical Planning shall undertake sensitization, training and capacity building of the County Government and National Government institutions and agencies that will be involved in the implementation of these guidelines. Special attention will be given to the County physical planning units, as they will be expected to provide technical expertise in the implementation of the County specific policies and strategies.

