



**KILIFI COUNTY  
GOVERNMENT**



# **NATIONAL SPATIAL PLAN IMPLEMENTATION GUIDELINES FOR KILIFI COUNTY**

**Optimal Productivity, Sustainability, Efficiency and Equity in the use of our  
Land and Territorial Space**



**MINISTRY OF LANDS AND PHYSICAL PLANNING  
STATE DEPARTMENT FOR PHYSICAL PLANNING  
© 2022**

**Kenya**   
**VISION 2030**

## **FOREWORD**

The Constitution of Kenya apportions responsibility of planning to both National and County Governments. Under the Fourth Schedule on distribution of functions, Part 1 (21) and (32) mandates the National Government with the responsibility of formulating general principles of land planning, co-ordination of planning by the Counties, capacity building and technical assistance to the Counties. On the other hand, Part 2(8) allocates the function of County planning and development to County Governments. It is under these provisions that the County specific guidelines have been prepared.

The Department of Physical Planning prepared the National Spatial Plan (NSP) in response to the Kenya Vision 2030 to guide the spatial development of the country over a period of 30 years beginning in 2015.

It aims at achieving an organized, integrated, sustainable and balanced development of the country by providing a framework for better national organization and linkages between different activities within the national space.

To implement the Plan, the Counties are expected to play a key role by mainstreaming strategies, policies, and measures identified in the NSP into the County spatial planning systems.

The guidelines have identified planning policies, strategies, and measures that Plans at the County level are expected to mainstream and propagate. The policies address among others, the protection of rich agricultural land, development imbalances, conservation of environmentally sensitive areas, urban containment, and promotion of industrial development.

The guidelines provide direction on the existing potentials, the opportunities, the constraints/challenges inhibiting harnessing of the potentials, the strategies to apply, respective policies required, and the necessary measures to achieve optimal productivity, sustainability, efficiency and equity in the use of county land resources.

The guidelines are an opportunity on how best to refocus, vary and complement areas that require different approaches responding to country-specific needs and promote the livelihoods of their people, while contributing to the national aspirations of vision 2030,

regional objectives of the Africa Agenda 2063, and international targets of sustainable development. The refocusing will also be handy in reviewing and making decisions on NSP which is due for review in 2025.

These guidelines are therefore a tool for enhancing this critical path and provide a direction for development planning by the Counties as they discharge their responsibility of preparing county and local physical and land use development plans. The guidelines will also ensure that the County Integrated Development Plans conform to the proposed County specific policy guidelines and measures.

DRAFT

## **PREFACE**

The National Spatial Plan (NSP) recognizes that Kenya is greatly endowed with massive and diverse resources distributed over the national space that require an integrated and coordinated approach for optimal productivity and sustainability.

The County Specific Guidelines have been derived from the National Spatial Plan and provide a planning framework for the integration of the NSP into the county spatial planning system. They are clear statements linking the National Spatial Plan to Inter-County, County and lower-level Physical and Land Use Development Plans and provide clarification on the anticipated sustainable development outcomes of implementing the Plan.

The County Government will adopt, develop and implement their plans based on the policies, strategies, and measures articulated in the guidelines. The realized county plans are expected to guide, harmonize and facilitate development within the county, hence contributing to the overall implementation of the NSP.

The guidelines also form an efficient compass and monitoring tool for National and County Governments to jointly pursue sustainable planning and appropriate implementation mechanisms.

For the county to be nationally competitive, there is need to balance development and promote optimal utilization of land and land-based resources as well as cultivate an integrated approach in addressing the intertwined challenges of regional imbalances/inequalities, rural development, underutilization of the available resources, uncontrolled urbanization, environmental degradation and inefficient transportation. It is imperative therefore, to prioritize the implementation of this strategic document so as to promote balanced development and competitiveness across the county.

## **EXECUTIVE SUMMARY**

The County Specific Guidelines seek to facilitate the implementation of the National Spatial Plan by outlining policies, strategies and measures to guide County spatial planning and development and promote optimal productivity, sustainability, efficiency and equity in the use of land. They provide a framework for preparation of lower level Plans including Inter-County, County and Local Physical and Land Use Development Plans.

The disconnect between National and County Spatial Planning and development has resulted in uncoordinated and unbalanced development, therefore creating a need for a clear structure that links National, Regional and Local planning and development. This is achievable through integration of the policies, strategies and measures proposed by the guidelines into County Spatial Plans, Programs and Projects, to tackle challenges of unbalanced regional development, urbanization, national competitiveness and unsustainable use of land and natural resources.

The County Specific Guidelines are organized into five chapters detailing various facets. Chapter one provides an overview, purpose and justification of preparation of the guidelines. It also outlines the objectives that the guidelines intend to achieve and details the preparation process as well as intended users. This chapter highlights the key principles that form the basis for preparation of lower level plans including public participation, liveability, sustainable development, urban containment, smart urban growth among others.

Chapter two details the legal and policy provisions that the guidelines are anchored upon. They include, among others, The Constitution of Kenya, 2010, The Physical and Land Use Planning Act No.13 of 2019, County Government Act, 2012, Environmental Management and Coordination (Amendment) Act, 2015, Sessional Paper No. 01 of 2017 on National Land Use Policy and Sessional Paper No. 10 of 2012 on Kenya Vision 2030.

The third chapter analyses the county profile, detailing its location, size, bio-physical characteristics, socioeconomic status and the County's comparative advantage in relation to others. The locational context provides information on the geographical position and bordering Counties while the biophysical context discusses the topography,

hydrology and climate. The socioeconomic status indicates key economic drivers of the County and its population and demographic structure.

Chapter four presents the County specific issues and proposes development strategies to promote national competitiveness, optimal use of land and resources, rural development, balanced intra-county development and urbanization. Additionally, it provides policy guidelines and measures for County advancement.

The final chapter five focuses on implementation and adoption of the guidelines. The implementation framework identifies institutions, County development programs and projects, and further ties them with responsible actors, resources and timeframes for effective execution. It proposes a framework for ensuring that the outlined policies, strategies and measures are adequately implemented.

## Table of Contents

1	INTRODUCTION.....	1
1.1	Background.....	1
1.2	Purpose.....	1
1.3	Objectives.....	1
1.4	The Scope of the Guidelines.....	2
1.5	Justification.....	3
1.6	Application of the Guidelines.....	3
1.7	The Process of Preparing the Guidelines.....	3
1.8	Targeted Users of the Guidelines.....	4
1.9	Key Principles.....	5
2	THE POLICY, LEGAL AND PLANNING FRAMEWORK OF THE GUIDELINES.....	7
2.1	Constitutional Context.....	7
2.2	Policy Context.....	7
2.2.1	Sessional Paper No. 10 of 2012 on Kenya Vision 2030.....	7
2.2.2	Sessional Paper No. 1 of 2017 on the National Land Use Policy.....	7
2.3	Legal Context.....	8
2.3.1	The Physical and Land Use Planning Act, 2019.....	8
2.3.2	The County Governments Act, 2012.....	8
2.3.3	Urban Areas and Cities (Amendment) Act, 2019.....	8
2.3.4	The Environmental Management and Coordination (Amendment) Act, 2015.....	8
2.3.5	The National Land Commission Act, 2012.....	9
2.4	The Planning Context.....	9
2.4.1	The National Spatial Plan (NSP).....	9
2.4.2	NSP linkage to Other Plans.....	10
3	THE COUNTY PROFILE.....	12
3.1	Overview.....	12
3.2	Location Context.....	12
3.3	Bio-Physical Context.....	12
3.4	Socio-Economic Background.....	15
3.5	County's Comparative Advantage.....	18
4	COUNTY SPECIFIC ISSUES, DEVELOPMENT STRATEGIES, POLICY GUIDELINES AND MEASURES.....	20
4.1	County Specific Issues and Development Strategies.....	20

4.2 National Spatial Plan Policy Guidelines and Measures For Kilifi County.....	28
5 IMPLEMENTATION AND ADOPTION OF THE GUIDELINES.....	45
5.1 Overview.....	45
5.2 Implementation Channels .....	45
5.3 Implementation Framework .....	46
5.3.1 County Physical Planning Committee.....	46
5.3.2 County Planning Unit (CPU) .....	47
5.3.3 National Land Commission .....	47
5.4 Monitoring and Evaluation.....	48
5.5 Conclusion.....	50

DRAFT

## List of Tables

Table 1: Targeted Users of the Guidelines .....	4
Table 2: Kilifi County Population Projections.....	15
Table 3: County Specific Issues and Development Strategies.....	20
Table 4: NSP Policy Guidelines and Measures for the County.....	28

## List of Figures

Figure 1: The Scope of the Guidelines .....	2
Figure 2: Policy Focus of the NSP .....	9
Figure 3: Linkage of the National Spatial Plan to Other Plans.....	11
Figure 4: NSP Implementation Organizational Structure.....	49

## List of Maps

Map 1: Location of Kilifi County.....	14
Map 2: The Existing Situation.....	17
Map 3: NSP Proposals for Kilifi County.....	44

# **1 INTRODUCTION**

## **1.1 Background**

The County Guidelines set out policies, strategies and measures that will guide the long-term spatial development of the county for a period of 30 years. They cover the entire county and defines the general trend and direction of its spatial development. The guidelines have been developed in line with the four thematic areas as outlined in the NSP. They provide a guide to the Planning Authority at the county on how to incorporate the NSP policies, strategies and measures during the preparation of County Spatial Plans and other lower level plans like the Local Physical and Land Use Development Plans consequently implementing the NSP.

The NSP County Specific implementation guidelines summarize the County's existing potentials and opportunities, the constraints (challenges) inhibiting harnessing of the potentials, the applicable strategies and respective policies required, and the necessary measures to achieve optimal productivity, sustainability, efficiency and equity in the use of the county land resources. They act as a reference point.

## **1.2 Purpose**

The purpose of the County Specific Guidelines is to provide a planning framework for mainstreaming of the National Spatial Plan to the County spatial planning system.

The guidelines are intended to assist the County enhance the implementation of the NSP by linking the proposed county specific policies, strategies and measures into the County plans, programs and projects while putting measures in place for achieving them. The guidelines inform preparation of various County Physical Plans such as the County Physical and Land Use Development Plans.

For optimal implementation of these plans, a County Integrated Development Plan (CIDP) is essential since it is a sectoral and budgetary based plan that draws its implementation programs and projects from the County Physical Plans.

## **1.3 Objectives**

The guidelines provide policies and strategies to deal with challenges of regional imbalances/inequalities, rural development, underutilization of the available

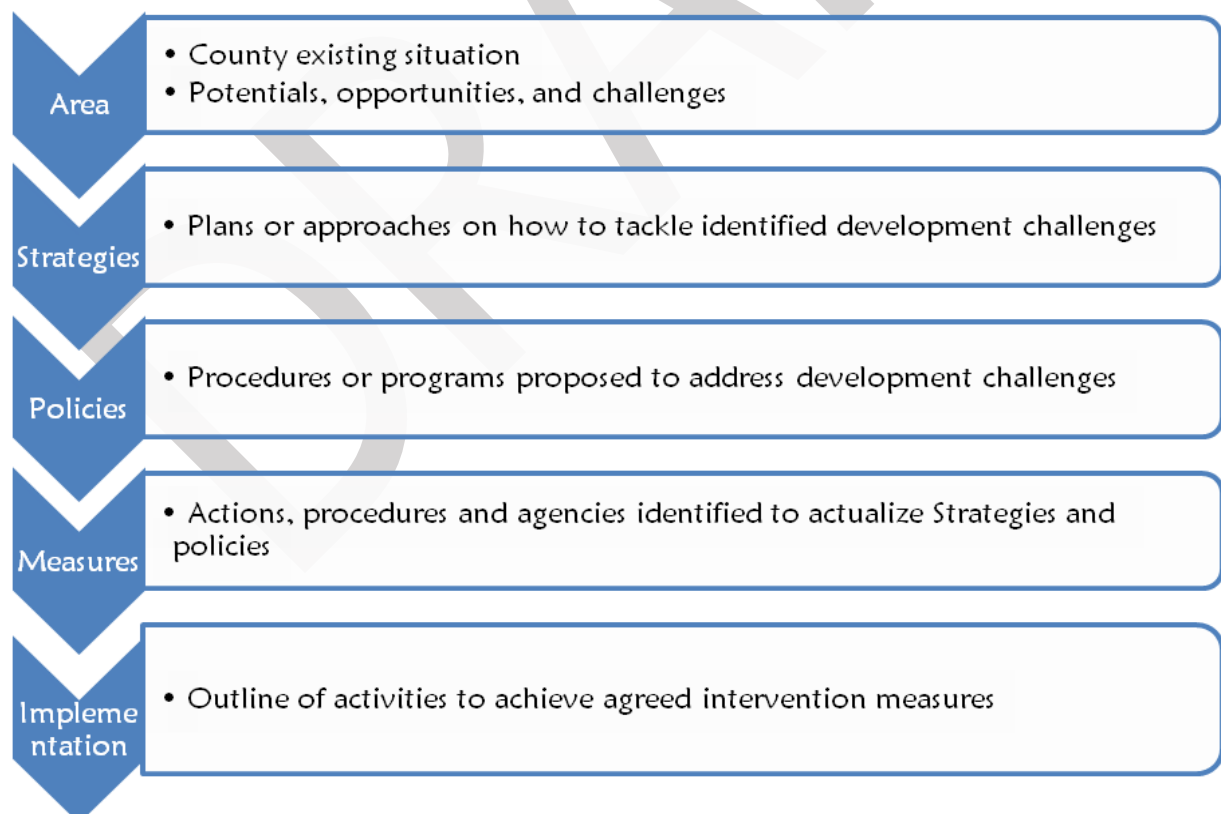
resources, urbanization, environmental degradation and inefficient transportation. Specific objectives of these guidelines are;

1. To sensitize the County on the provisions of the NSP
2. To promote synergy between National and County Planning
3. To guide the County in the implementation of the NSP
4. To clarify the roles of the different actors in the implementation of the NSP

### 1.4 The Scope of the Guidelines

The guidelines and strategies are specific to Kilifi County and cover the entire territory of the County measuring approximately 12,246Km<sup>2</sup>. The guideline highlights key facets which include identified challenges, actions, approaches, plans and procedures prescribed to address the challenges, and outline of activities to execute agreed interventions as captured in the National Spatial Plan as indicated in figure 1 below. These guidelines shall be operational until the year 2045.

**Figure 1: The Scope of the Guidelines**



**Source: State Department for Physical Planning, 2022**

## **1.5 Justification**

The preparation of County Spatial Plans which is a mandate of the Counties has been slow and, in some Counties, has not begun at all. These guidelines are therefore a quick reference on how Kilifi County can optimize land even in the absence of these plans.

Further, the implementation of NSP since its approval and launch has been undertaken in an uncoordinated manner hence the guidelines will provide a standardized approach for all Counties.

The guidelines are important as a tool for tracking and evaluating the implementation of NSP both at National and County levels.

## **1.6 Application of the Guidelines**

The guidelines and strategies will be used or applied in the following ways to achieve a more sustained and coordinated development of the County;

1. To effectively coordinate planning between the National and the County Government;
2. To improve County Government capacity to formulate, coordinate and implement integrated development policies and programmes to address spatially unbalanced development;
3. To inform strategic infrastructure policy and public investment decisions which support the achievement of balanced development in the County;
4. To strengthen County inter-sectoral coordination within a spatial framework and provide the private sector with a clear context in which they can make investment decisions;
5. To optimize the use of land and natural resources by providing a framework for making sustainable locational choices for sustainable development and conservation of land productivity in the County.

## **1.7 The Process of Preparing the Guidelines**

The process involved reviewing the National Spatial Plan and identifying key issues, spatial policies, development strategies and measures specific to Kilifi County. These

key issues, spatial policies, development strategies and measures will be realized through preparation of County and other lower-level plans.

Research was undertaken on various thematic areas to enrich the County specific issues and development strategies as well as policy guidelines and measures/ interventions. Further, preparation of the guidelines considered the constitutional, policy and legal provisions on physical and land use planning. Expert opinion was sought on the identified issues, policies, measures and strategies for implementation viability.

The preparation of the guidelines was identified as one of the implementation tools of the NSP, in which key NSP issues, policies, strategies and measures were translated into specific action plans, programs and projects at the County level.

### 1.8 Targeted Users of the Guidelines

Table 1 below indicates the targeted users of this guideline and the appliance for each among other uses.

**Table 1: Targeted Users of the Guidelines**

User	Application
The County Executive Committee Member (CECM) in charge of Physical and Land Use Planning	<ul style="list-style-type: none"> <li>▪ Preparation of County and Lower-Level Plans</li> <li>▪ Linkage of Planning Structures</li> <li>▪ Quality control of the various County Plans</li> <li>▪ Formulation of County Planning Policies and Strategies</li> <li>▪ Establishment of the County Planning Institutions</li> <li>▪ Coordination and Implement of the County Plans and Policies</li> </ul>
The County Director of Physical and Land Use Planning	<ul style="list-style-type: none"> <li>▪ Advising the County Government on the impact of the County Specific Guidelines to the County</li> <li>▪ Preparation of County Physical and Land Use Development Plans and other lower level plans</li> <li>▪ Formulating County Physical and Land Use Planning Policies, Guidelines, Strategies and Standards</li> <li>▪ Issuance of development permission and other development control instruments under The Physical and Land Use Planning Act, 2019</li> </ul>

Licensed Physical And Land Use Planners both in public and private sectors	<ul style="list-style-type: none"> <li>▪ Prepare, coordinate and implement Spatial Plans</li> <li>▪ Quality control of plans and consultancy services</li> <li>▪ Formulation of policies, strategies and development guidelines</li> <li>▪ Dispute resolution within the County</li> </ul>
The County Assembly	<ul style="list-style-type: none"> <li>▪ Approval of planning budgets</li> <li>▪ Vetting of various County Plans</li> <li>▪ Formulation and passing of County Planning legislation</li> <li>▪ Enhance capacity to oversee the executive on spatial planning</li> </ul>
Ministries, Departments and Agencies (MDAs)	<ul style="list-style-type: none"> <li>▪ Development of relevant policies, strategies, standards, guidelines, programmes, and projects</li> <li>▪ Understand processes, procedures and linkages in spatial planning requirements</li> </ul>
The National Land Commission (NLC)	<ul style="list-style-type: none"> <li>▪ Oversight role in land use planning to ensure efficient implementation of the NSP</li> <li>▪ Ensure relevant planning authorities carry out their functions as required by law</li> </ul>
Practitioners in the built environment	<ul style="list-style-type: none"> <li>▪ Advancement of relevant policies, strategies, standards, guidelines, programmes, and projects</li> <li>▪ Apply processes, procedures and linkages of the NSP in their respective areas of practice</li> </ul>
Community, Developers and Investors	<ul style="list-style-type: none"> <li>▪ Comprehend the processes, procedures and requirements of various County Plans and Policies</li> <li>▪ Linkages of spatial planning and implementation</li> <li>▪ Informed investment decisions</li> </ul>
Development Partners	<ul style="list-style-type: none"> <li>▪ Reference frame for funding spatial planning activities</li> <li>▪ Understand planning linkages and implementation</li> <li>▪ Informed development decisions</li> </ul>
Training Institutions	<ul style="list-style-type: none"> <li>▪ Compliment the curriculum for training of Spatial Planners</li> <li>▪ Understand the planning procedures and processes</li> </ul>

## 1.9 Key Principles

The following principles as indicated in the NSP shall guide and form the basis upon which the lower level spatial plans shall be prepared; -

- 1. Effective Public Participation/Engagement:** All plans shall be prepared in a participatory and consultative manner with relevant stakeholders and sectoral actors
- 2. Urban Containment/Compact Cities:** Local plans shall strive to limit and control urban growth within the set urban boundaries to protect rich

agricultural land, mitigate urban sprawl and reduce cost of infrastructural provision

- 3. Livability:** The planning of urban areas shall enhance the livability index in the area of housing, environment, transportation, health, and social engagement. The urban areas must be economically viable, socially inclusive and ecologically sustainable
- 4. Smart and Green Urban Growth:** Plans shall promote sustainable use of energy, creation of green spaces, reduce the need for car travel, and promote use of local materials, support businesses, protection of heritage and creation of unique character
- 5. Sustainable Development:** Balancing social, economic and environmental dimensions of development and catering for current and future generations
- 6. Promotion of Ecological Integrity:** Plans shall promote the protection and conservation of environmentally sensitive areas
- 7. Promote Public Transportation:** Favor public transportation over private transport to ensure efficiency and functionality of urban places
- 8. Balanced development:** Plans to ensure there/ is balanced development in the County to cure inequalities.

## **2 THE POLICY, LEGAL AND PLANNING FRAMEWORK OF THE GUIDELINES**

### **2.1 Constitutional Context**

The formulation of these guidelines took into account the aspirations and principles of the Constitution of Kenya. Article 66 of the Constitution of Kenya gives the State powers to regulate use of any land and property in the interest of land use planning among others. The Fourth Schedule of the Constitution assigns the National Government the role of capacity building and technical assistance to the Counties. The guidelines are therefore within and in response to the aspirations, values and principles as provided for in the constitution.

### **2.2 Policy Context**

#### **2.2.1 Sessional Paper No. 10 of 2012 on Kenya Vision 2030**

Kenya Vision 2030 is the overarching national development framework which all plans should be aligned to. The preparation of all spatial plans should take cognizance of the aspirations, foundations and development concepts of the vision. The preparation of the first National Spatial Plan is identified in Kenya Vision 2030 as a flagship project and is regarded as one of the foundations for socio-economic transformation. Hence the need for linkage between National planning and County planning which can be achieved through mainstreaming NSPs into County Spatial Plans (CSPs) and other lower-level plans by preparing NSP County Specific Guidelines to implement the NSP at lower levels

#### **2.2.2 Sessional Paper No. 1 of 2017 on the National Land Use Policy**

The policy was formulated to address the various challenges related to land use and ensure efficient, productive and sustainable use of land. The main goal of the Policy is to provide legal, administrative, institutional and technological framework for optimal utilization and productivity of land related resources in a sustainable and desirable manner at National, County and Community levels

The policy recommends the preparation of a National Spatial Plan to provide an integrated framework for the development of the country including guidelines for sustainable rural and urban planning management. The policy also provides for the preparation of planning guidelines, policies and standards to be observed by County Governments and other sectoral agencies within the frameworks of approved

physical and land use development plans. These guidelines have been prepared on this basis and they are to be observed by counties in the implementation of the National Spatial Plan.

## **2.3 Legal Context**

Several Acts of Parliament are in place to provide the legal framework for the implementation of this mandate provided for in Article 66 of the Constitution. The Physical and Land Use Planning Act, 2019, The Urban Areas and Cities (Amendment) Act, 2019, County Governments Act No. 17 of 2012, The Land Act No. 06 of 2012, National Land Commission Act No. 05 of 2012 among others. The NSP County specific guidelines are prepared in this context and meet this criterion.

### **2.3.1 The Physical and Land Use Planning Act, 2019**

This is the overarching statute that provides for formulation of both National and County Physical and Land Use planning policies, guidelines and standards. The Act further provides for administration, types, content, process and approval of the various types of Physical and Land Use Development Plans

### **2.3.2 The County Governments Act, 2012**

This statute mandates County Governments to carry out the planning function at the County level. The guidelines enhance the capacity to prepare the various County level plans that meet the recommended quality and standards

### **2.3.3 Urban Areas and Cities (Amendment) Act, 2019**

The statute provides for classification of urban areas and cities, their governance and management, and for integrated development planning. The guidelines are a basis for preparation of these lower-level plans

### **2.3.4 The Environmental Management and Coordination (Amendment) Act, 2015**

The Act provides for the establishment of an appropriate legal and institutional framework for the management of the environment as well as guidelines relating to environmental management and prevention or abatement of environmental

degradation. The guidelines take cognizance of this Act and will be implemented within its framework

### **2.3.5 The National Land Commission Act, 2012**

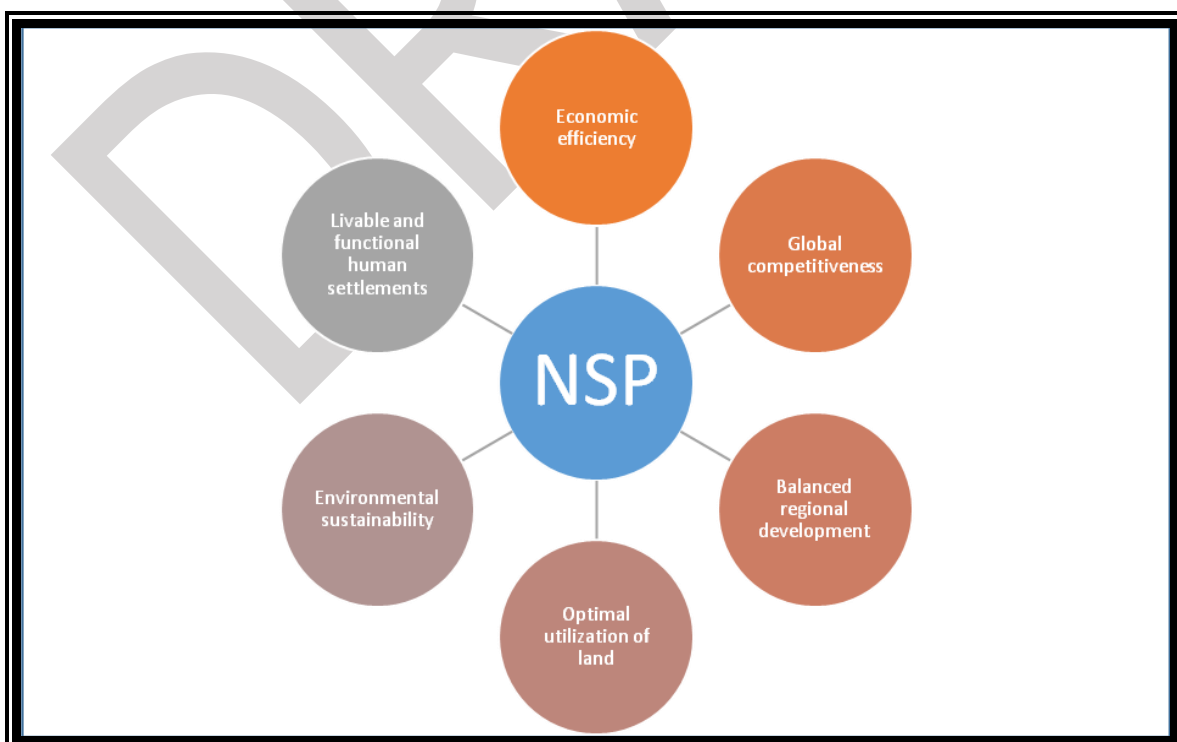
The Act the National Land Commission with the management and administration of public land on behalf of the National and County Government, and to monitor and oversight land use planning in the country. The guidelines fall within the ambit of this statute and will facilitates their oversight responsibilities.

## **2.4 The Planning Context**

### **2.4.1 The National Spatial Plan (NSP)**

The National Spatial Plan (NSP) covers the whole country encompassing the forty-seven (47) Counties and the Exclusive Economic Zone. The NSP outlines policies and strategies as indicated in Figure 2 below, geared towards influencing desired future distribution and organization of population and activities outlined in Vision 2030 and Sectoral Policies and Plans. It aims at achieving economic efficiency and balanced development. The various County Spatial Plans should be aligned to the policies outlined in the NSP and as demonstrated in figure 2 below.

**Figure 2: Policy Focus of the NSP**



**Source: National Spatial Plan, 2015**

To actualize the NSP a comprehensive implementation strategy has been proposed that embraces a multiplicity of actors including National Government Ministries, Departments and Agencies (MDAs), County Governments and the National Land Commission. The strategy proposes the establishment of the following institutions as key in the implementation of the Plan; The National Physical Planning Council, the National Technical Committee and the County Physical Planning Committee

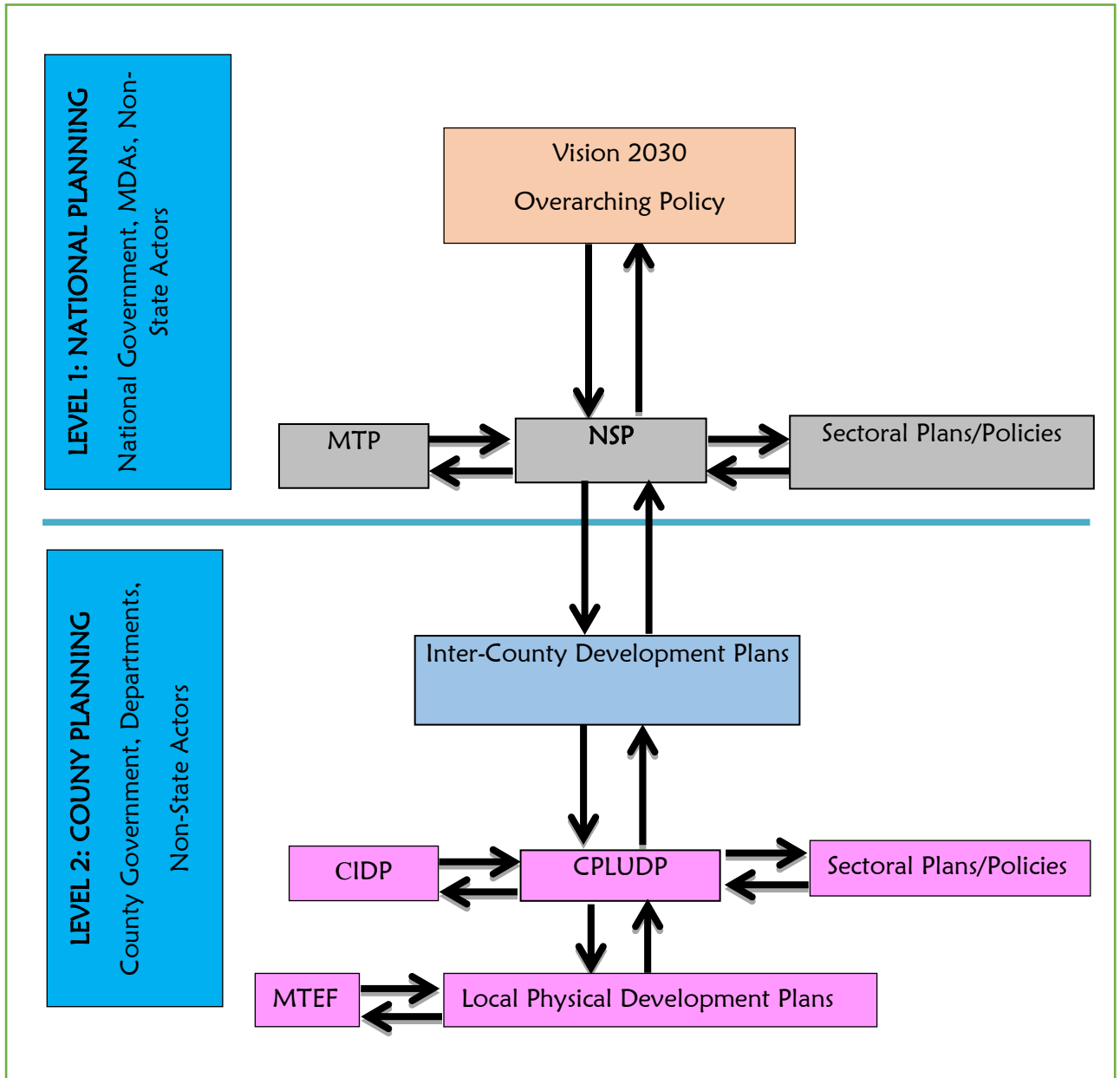
#### **2.4.2 NSP linkage to Other Plans**

The linkage of the National Spatial Plan (NSP) to county and other lower-level plans is key to realization of its aspirations and the successful actualization of these plans. The NSP provides a spatial framework to ground the Vision 2030 flagships projects and form a basis for coordination of County policies, strategies, measures and plans. Inter County and County plans take into considerations the policies, measures and strategies of the NSP and implements them actualizing its aspirations.

County Physical and Land Use Development Plans provide a framework where the CIDP draws its programs and projects. The implementation of the CIDP in turn leads to realization of the objectives of the County Physical and Land Use Development Plan.

Figure 3 below illustrates the Country's planning Linkage.

**Figure 3: Linkage of the National Spatial Plan to Other Plans**



*Source: The National Spatial Plan, 2015*

### **3 THE COUNTY PROFILE**

#### **3.1 Overview**

This chapter presents the locational, bio-physical and socio-economic perspectives and trends of the County that informed the preparation of the strategies, policies and measures that form the National Spatial Plan County-Specific Guidelines for Kilifi County. It looks at the comparative advantage of Kilifi County as compared to the other Counties of Kenya

#### **3.2 Location Context**

Kilifi County is one of the six counties in the Coast region of Kenya. The County lies between latitude 3°40" and 0.01" south, and between longitude 39°45" and 0.00" East. It borders Kwale County to the South West, Taita Taveta County to the West and Tana River County to the North, Mombasa County to the South and Indian Ocean to the East. The County covers an area of 12,540km<sup>2</sup> as indicated in Map 1 below.

The County's main urban centres are Malindi, Kilifi, Mtwapa, Kaloleni, Mazaras, Mariakani, Watamu, Magarini, Marereni, Majengo and Bamba.

#### **3.3 Bio-Physical Context**

Kilifi County has four major topographic features. The first one is the narrow belt, which forms the coastal plain and varies in width from 3km to 20km. The coastal plain lies below 30m above sea level with a few prominent peaks on the western boundary such as Mwembetungu hills. Across this plain are several creeks with excellent marine swamps that are richly endowed with mangrove forests and present great potential for marine culture. This zone is composed of marine sediments, including coral, limestone, marble, clay stones and alluvial deposits that support agriculture.

The second topographical feature is the foot plateau that lies to the east of the coastal plain. It is characterized by a slightly undulating terrain that falls between 60m and 150m altitude and slopes towards the sea. A number of dry river courses

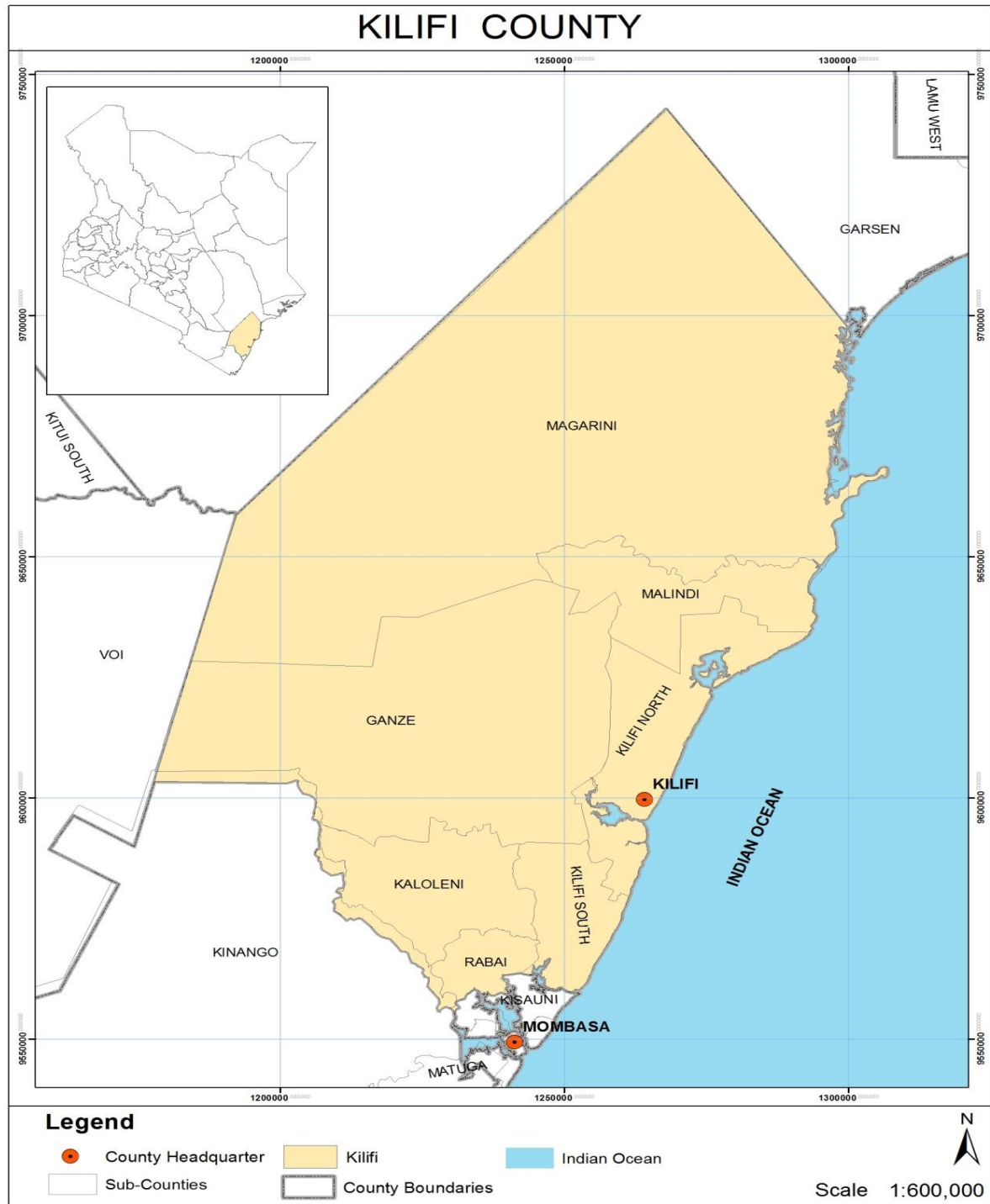
transverse the surface with underlying Jurassic sediments consisting of shells, sandstones and clays. This zone is covered by grassland and stunted shrubs.

The third feature is the coastal range, which falls beyond the foot plateau between 150m to 450m altitude and has distinct low range sandstone hills. These hills include Simba, Kiwava, Daka, Wacha, Gaabo, Jibana, Mazeras and Mwangea.

The fourth is the Nyika Plateau, which rises from 100m to 340m above sea level covering about two thirds of the County area on its western side. This plateau is characterized by a low population density, thin vegetative cover, shallow depressions and gently undulating terrain. It constitutes the arid and semi-arid areas of the County, which are suitable for ranching.

The drainage pattern of the County is formed by one permanent river, a number of ephemeral rivers and streams which drain into Indian Ocean. The permanent river is Sabaki River while the seasonal rivers are Nzovuni, Rare, Goshi and Kombeni. The streams include Wimbi, Kanagoni, Masa, Muhomkulu and Mleji.

**Map 1: Location of Kilifi County**



**Source: State Department for Physical Planning, 2022**

The County is divided into five Agro-Ecological Zones (AEZ) defining areas with similar production related characteristics such as annual mean temperatures, vegetation and humidity. These zones include; Coconut - Cassava Zone, Livestock -

Millet Zone, Cashewnut - Coconut zone, Lowland Ranching and Coconut Cashew Nut – Cassava Zone.

### 3.4 Socio-Economic Background

The population of the County was estimated to be at 1,453,762 in 2019. The population is projected to rise to 1,705,753 (with 818,761 males and 886,992 female) and 2,906,199 (1,394,976 males and 1,511,223 females) in 2025 and 2045, respectively, at a mean inter-censal annual growth rate of 2.7 percent. Further, population projections are indicated in table 3 below.

**Table 2: Kilifi County Population Projections**

YEAR	2019	2020		2025		2030		2035		2040		2045	
Population size	1,453,762	1,493,014		1,705,753		1,948,805		2,226,490		2,543,742		2,906,199	
		M	F	M	F	M	F	M	F	M	F	M	F
		716,647	776,367	818,761	886,992	935,426	1,013,379	1,068,715	1,157,775	1,220,996	1,322,746	1,394,976	1,511,223
Households	302,867	311,045		355,365		406,001		463,852		529,946		605,458	
Area	12,540	-	-	-	-	-	-	-	-	-	-	-	-
Density	116	119		136		155		178		203		232	

**Source: KNBS, 2019**

Kilifi County has a road network of 101,000 km (out of which one (1) road is Class A Bitumen Trunk Road of 115.4Kms, one (1) Class A7 Bitumen National Road of 168.6 Kms, five (5) roads Class C Bitumen Primary Roads of 219.3 Kms, Class D gravel Secondary Roads and E earthen minor roads 3000Kms and the rest are unclassified.

The County has about 40km of rail network, which is part of the Mombasa-Kisumu railway stretch that passes through the County between Mazeras and Samburu.

Over 80% of the population in the County relies on wood fuel for their energy needs, a fact that has led to destruction of forests in the County. Access to electricity and solar energy technologies is estimated at 21% and 6% respectively.

Different construction materials are used in building housing types in different localities. National Housing Survey (2013) indicates that iron sheets usage for roofing, in Kilifi County, is at 43.7% and that of grass/Makuti is at 53%. Wall construction using stones/blocks/bricks is at 30% and it is in urban areas while mud/wattle wall construction is at 48%, mostly in rural areas.

The County is covered by all the major mobile telephone service providers. The county has mobile telephone coverage of 75 percent and minimal usage of landline connection. The County has 7 post offices and 5 sub post offices

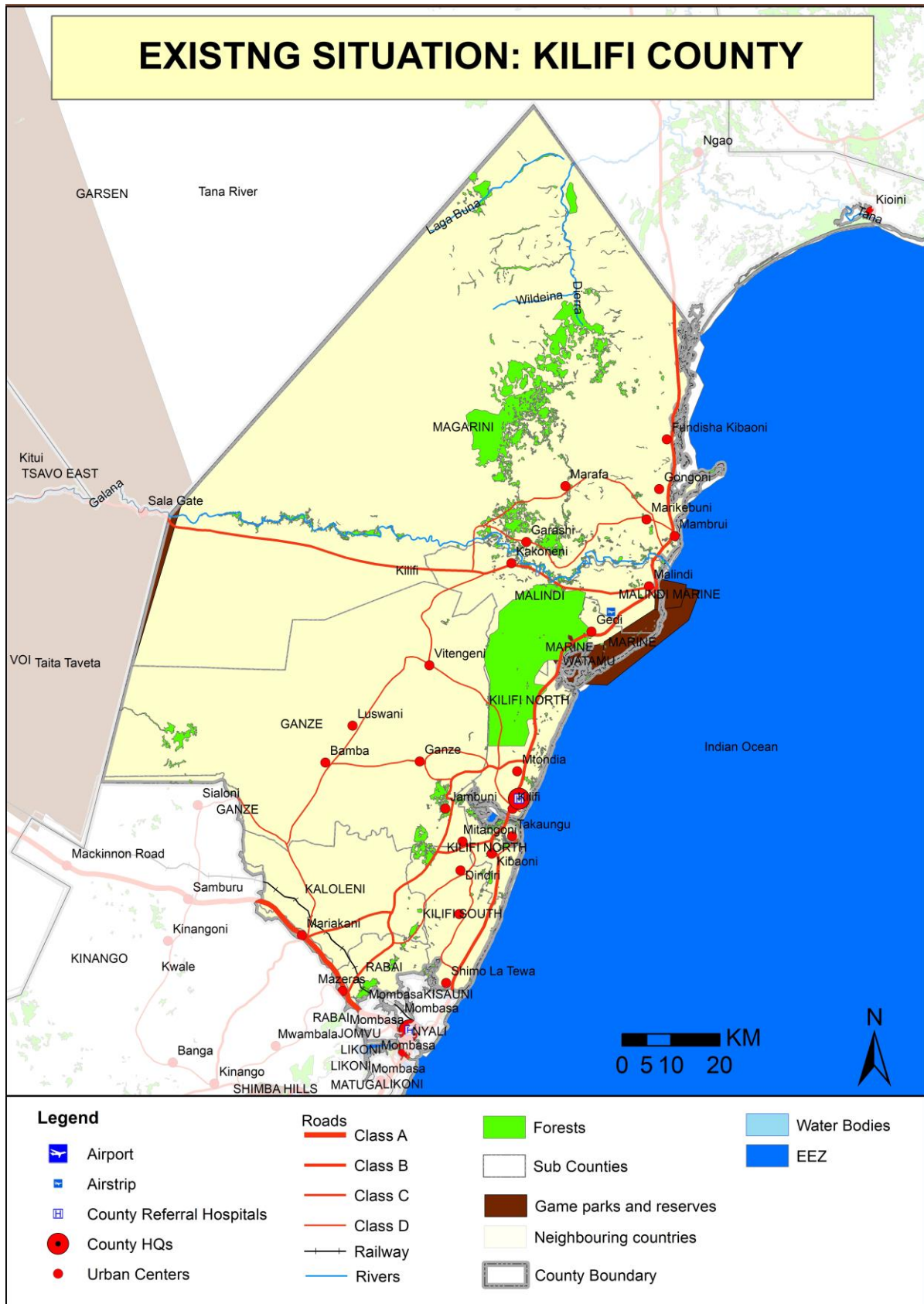
According to the Kilifi County Baseline Survey (2013) 65% of farm land was owned by household head or spouse, about 20% communally owned and 4% rented out by individual owners. 34% of households had title deeds to their land, 55% owned land without formal documents, 22% had communal rights to use of land and about 8% had use of land but never been allocated (squatter).

The County has abundant arable land which is estimated at 6,891.2km<sup>2</sup> with the non-arable land constituting of 5,407 km<sup>2</sup>. This implies that over 56% of the land in the County is suitable for agricultural practices while the remaining 44% can be transformed for agricultural purposes by investing in irrigation related technologies. Ironically it is only a total area of 112,879 Ha of land that is under food crops while that under horticultural including fruits and vegetables is 73,041.7 Ha in the County.

Apiculture is a significant economic activity among small holder farmers in the County. The County has a total of 14,192 bee hives of which, 3,533 comprise of log hives, 3,789 Kenya Top Bee Hive (KTBH) and 6,870 langstroth bee hives. Honey production amounted to 121,360 kg in the last 5 years translating to Ksh 84,952,000 income at the household level.

The existing situation of Kilifi County is indicated in Map 2 below.

**Map 2: The Existing Situation**



**Source: State Department for Physical Planning, 2022**

### **3.5 County's Comparative Advantage**

#### **a) The Blue Economy**

Kilifi County has a massive blue economy investment potential arising from its 265km long Indian Ocean coastline and its 200 nautical County borders to its East. The potential and strategies for the sustainable use of ocean resources have been integrated in other sectors such as Energy, Transport, Environment, Tourism and Water.

#### **b) Maritime Transport**

The County has a total of five jetties located at Mtwapa, Kilifi, Ngomeni, Malindi and Takaungu. Takaungu has excellent natural harbor conditions and adequate land for the development of either a fishing port or a feeder port to the port of Lamu.

#### **c) Irrigation Potential**

Over 65 percent of Kilifi County land mass is water scarce and its residents either rely on rain water harvesting in water pans or small scale abstraction of river waters for domestic and animal consumption. Parts of Ganze, Kaloleni, Magarini and Malindi Sub-Counties depend on pans for regular supply of domestic and livestock water, which often dry up during the normal seasonal dry spells.

#### **d) Aquaculture**

The full potential of aquaculture in the County has not been realized due lack of information to guide its development. The County relies heavily on natural water bodies for its supply of fish production whose resources are subjected to over-exploitation and global climatic change.

#### **e) Mineral**

Mineral deposits and other extractive products found in the County include Barytes, Manganese, Silver, and Gypsum, lead, mercury, zircon and monazite. Other minerals extracted include barites, galena, ballasts, rubies, pozzolana,

gypsum and limestone (*Kilifi County Mineral Explorations Management Plan, 2015*)

#### **f) Tourism**

The County is rich in endemic flora and fauna, attractive physiographic features and tropical climate, and sites of historical importance that makes it a unique tourist destination. The County is endowed with sunny and sandy beaches, magnificent landscapes, tropical and marine forests and swamps that are home to endemic flora and fauna.

Further, the County has a rich cultural and historical heritage that includes Swahili/Arab and Mijikenda cultures, world heritage sites like the *Kaya* forests and archaeological monuments such as those in Gede, Malindi, Takaungu, Mnarani and Rabai, dating back to the slave trade period.

Along its 265km shoreline, the County has unrivalled beach and marine-based recreational facilities. The long shoreline hosts innumerable marine sites that offer eco-tourism and water-sport attractions. They include the creeks at Mtwapa, Mida, Kilifi, Ngomeni and Fundisa bay. Malindi and Watamu Marine Parks are UNESCO designated biosphere reserves that are a critical habitat for indigenous and migratory bird species. They provide breeding and nursery grounds for various endemic fish species, marine turtles and several species of Crustaceans.

#### **g) Air Transport**

There exists an airport in Malindi town

## 4 COUNTY SPECIFIC ISSUES, DEVELOPMENT STRATEGIES, POLICY GUIDELINES AND MEASURES

### 4.1 County Specific Issues and Development Strategies

The National Spatial Plan provides strategies for spatial growth and development across the country. The strategies are aimed at providing a spatial expression to Kenya Vision 2030 and other sector policies.

This section seeks to provide strategies for spatial growth and development of the County by addressing the factors that prevent the County from achieving the intended goals and objectives. The development strategies discussed are aimed at managing the global impacts, optimizing use of natural resources, creating a County balance and transforming rural areas.

The following are detailed NSP County-Specific issues and development strategies that apply to Kilifi County.

**Table 3: County Specific Issues and Development Strategies**

<b>Strategy 1: Enhancing National Competitiveness</b>		
<b>Opportunities</b>	<b>Constraints</b>	<b>Strategies</b>
<ul style="list-style-type: none"> <li>➤ Its strategic location on the coastal region; <i>The natural harbor and the diverse natural resource base including; the sandy beaches, the Ocean, minerals and good soils</i></li> </ul>	<ul style="list-style-type: none"> <li>➤ Inefficient Transport System</li> <li>➤ Unreliable Supply and High Cost of Energy</li> <li>➤ Unattractive Business Climate (regulatory and tax frameworks, enforceability of contracts, red tape, barriers to competition, subsidies, corruption)</li> </ul>	<ul style="list-style-type: none"> <li>➤ Improvement of the Malindi Airport</li> <li>➤ Development of a resort city in Kilifi</li> <li>➤ Development of the Blue Economy, cultural, historical and beach tourism</li> </ul>

<ul style="list-style-type: none"> <li>➤ Member of Jumuiya ya Kaunti za Pwani (JKP) Economic Bloc for economic development within the region and to foster peaceful co-existence</li> </ul>	<ul style="list-style-type: none"> <li>➤ Inadequate funds to manage the Bloc</li> <li>➤ Lack of consensus on the focus of potential programs and initiatives</li> </ul>	<ul style="list-style-type: none"> <li>➤ Leverage the potential areas of collaboration with bloc members.</li> </ul>
---	---	--

**Strategy 2: Optimizing Land and Natural Resources**

Opportunities	Constraints	Strategies
<b>Agriculture</b>		
<ul style="list-style-type: none"> <li>➤ Transition areas – <i>These areas have the ability to support both livestock farming and crop farming albeit limitations of rainfall scarcity and unreliability</i></li> </ul>	<ul style="list-style-type: none"> <li>➤ Use of inappropriate farm inputs and technology</li> <li>➤ Poor agricultural support infrastructure</li> </ul>	<ul style="list-style-type: none"> <li>➤ Provide subsidies to promote the use of appropriate farm inputs and technology</li> <li>➤ Improve on transport infrastructure for agricultural support</li> <li>➤ Exploit/harness potential ocean water resources and rainwater</li> </ul>
<ul style="list-style-type: none"> <li>➤ High potential for irrigation agriculture</li> </ul>	<ul style="list-style-type: none"> <li>➤ Reduced soil fertility and depth</li> <li>➤ Poor agricultural support infrastructure</li> </ul>	<ul style="list-style-type: none"> <li>➤ Promote the use of appropriate farm inputs and technology by providing subsidies and incentive</li> <li>➤ Improve on transportation infrastructure in the agricultural areas</li> </ul>
<b>Blue Economy</b>		
<ul style="list-style-type: none"> <li>○ Aquaculture and marine-culture potential areas</li> <li>○ Ocean and deep-sea fishing potential area</li> <li>○ Terrestrial green carbon sinks</li> </ul>	<ul style="list-style-type: none"> <li>➤ Unexploited and undeveloped rich coastal and maritime resources</li> <li>➤ Underutilized deep sea fishing</li> <li>➤ Domination of deep sea fishing by foreign fishing companies</li> <li>➤ Lack of knowledge, appropriate skills, training and financial</li> </ul>	<ul style="list-style-type: none"> <li>➤ Develop strategies to facilitate sustainable exploitation of the blue economy sector</li> <li>➤ Tap the blue economy it into the mainstream economic development of the Country</li> <li>➤ Develop, promoted and integrate the blue economy into the economy of the County</li> <li>➤ Provide subsidies on fishing</li> </ul>

	<p>resources</p> <ul style="list-style-type: none"> <li>➤ Climate vulnerability</li> <li>➤ Maritime insecurity</li> <li>➤ Water pollution</li> <li>➤</li> </ul>	<p>equipment and undertake research on best fishing practices</p> <ul style="list-style-type: none"> <li>➤ Control of fishing territories in the County</li> <li>➤ Integrate waste management and water pollution control in all county policies</li> </ul>
<b>Environmental Conservation and Protection</b>		
<ul style="list-style-type: none"> <li>➤ Coastal area suitable for Agriculture, Fishing &amp; Tourism</li> <li>➤ Diverse biodiversity(arab uko Sokoke forest)</li> </ul>	<ul style="list-style-type: none"> <li>➤ Destruction of the coastal eco-systems</li> <li>➤ Depletion of marine resources</li> <li>➤ Deforestation</li> </ul>	<ul style="list-style-type: none"> <li>➤ Strict regulation of exploitation of marine resource</li> <li>➤ Preparation of Coastal Management Plans</li> <li>➤ Increase forest cover through afforestation, re-afforestation and agro forestry</li> <li>➤</li> </ul>
<ul style="list-style-type: none"> <li>➤ <b>Protection Area Rank 1;</b> Wetlands&amp; natural marine forests (Recharge water Systems and Carbon sinks and Biodiversity)</li> </ul>	<ul style="list-style-type: none"> <li>➤ Deforestation</li> <li>➤ Encroachment by human settlement and activities</li> <li>➤ Pollution</li> </ul>	<ul style="list-style-type: none"> <li>➤ Development is not permitted in these areas except for the purpose of eco-tourism and research</li> </ul>
<ul style="list-style-type: none"> <li>➤ <b>Protection Area; Rank 2 -</b> Water bodies (Ocean and rivers),Mountains, parks and conservancies (Sources of fish, Habitants for wildlife and for Tourism activities)</li> </ul>	<ul style="list-style-type: none"> <li>➤ Drying up of water sources</li> <li>➤ Pollution and destruction of the marine ecosystem</li> <li>➤ Encroachment by human settlement and activities</li> <li>➤ Unsustainable abstraction of water</li> </ul>	<ul style="list-style-type: none"> <li>➤ Control water abstraction</li> <li>➤ Preservation and conservation of the marine biodiversity</li> <li>➤ Human settlement should not be allowed in these areas</li> <li>➤ Regulated tourism related activities can be allowed in these areas</li> <li>➤ Controlled development of hotels parks and conservancies can be permitted</li> <li>➤ No change of use is permitted in these areas except for conservation purpose</li> </ul>
<b>Natural Resources</b>		

<ul style="list-style-type: none"> <li>➤ Diverse natural resource base; Natural harbor, Sandy Beaches, The Ocean, Minerals and Good Soils/Blue Economy, forest</li> </ul>	<ul style="list-style-type: none"> <li>➤ Underutilized Natural resource base</li> <li>➤ Low level of awareness</li> <li>➤ Inadequate technology</li> <li>➤ Lack of appropriate skills and financial resources</li> </ul>	<ul style="list-style-type: none"> <li>➤ Development strategies to facilitate sustainable exploitation of the rich coastal and maritime resources, including fishing, aquaculture, transportation, shipbuilding and underwater mining activities which have largely been untapped</li> <li>➤ Harnessing of tourism potential through beach tourism, deep sea fishing, hotels and boat racing</li> </ul>
<ul style="list-style-type: none"> <li>➤ Wind and solar energy sources</li> </ul>	<ul style="list-style-type: none"> <li>➤ Inadequate technology and exploration of infrastructure</li> <li>➤ High costs of exploiting available resources</li> </ul>	<ul style="list-style-type: none"> <li>➤ Optimal utilization of the available resources</li> <li>➤ Invest in appropriate technology and infrastructure</li> <li>➤ Undertake further exploration of the available resources in the County</li> </ul>
<b>Industrial Potential</b>		
<ul style="list-style-type: none"> <li>➤ Rural based industries</li> </ul>	<ul style="list-style-type: none"> <li>➤ Poor linkages to the markets due to poor transportation and support infrastructure</li> <li>➤ Low technological adaptation for value addition and fluctuation of prices</li> </ul>	<ul style="list-style-type: none"> <li>➤ Development of rural growth centers within the County</li> <li>➤ Material oriented industries to be directed to rural growth centers</li> <li>➤ Provide adequate transport and support infrastructure</li> <li>➤ Diversify energy production sources to reduce costs of production and enhance its reliability</li> </ul>
<ul style="list-style-type: none"> <li>➤ High potential for Agro – based Industry (<i>coconut, cassava and cashew nut</i>)</li> </ul>	<ul style="list-style-type: none"> <li>➤ Low adoption of technology</li> <li>➤ Inadequate transport infrastructure</li> <li>➤ Price fluctuations in products</li> <li>➤ Lack of established value chains</li> </ul>	<ul style="list-style-type: none"> <li>➤ Provide appropriate technology to enhance value addition</li> <li>➤ Provide adequate, supportive transport and infrastructure</li> <li>➤ Diversify energy production sources to reduce costs of production and enhance its reliability</li> <li>➤ Promote the formation of cooperatives and Saccos to advance marketing of agro – products</li> <li>➤ Prepare an industrial master plan</li> </ul>
<ul style="list-style-type: none"> <li>➤ Cottage industries and crafts</li> </ul>	<ul style="list-style-type: none"> <li>➤ Insufficient market for finished products</li> <li>➤ Lack of frameworks to safeguard intellectual property rights (IPR)</li> </ul>	<ul style="list-style-type: none"> <li>➤ Promote assertive marketing campaigns for products produced in the County both domestically and internationally</li> <li>➤ Sensitize players in the sector on the aspect of IPR and enforce regulations on the same</li> </ul>

<ul style="list-style-type: none"> <li>➤ Mineral-based industries</li> </ul>	<ul style="list-style-type: none"> <li>➤ Low adoption of technology for exploration and exploitation of minerals</li> <li>➤ Lack of appropriate equipment and technology for exploration and exploitation</li> <li>➤ Inadequate transport infrastructure</li> <li>➤ High energy costs</li> </ul>	<ul style="list-style-type: none"> <li>➤ Invest in exploration of potential mineral reserves available in the County</li> <li>➤ Provide adequate transport and support infrastructure</li> <li>➤ Diversify energy production sources to reduce costs of production and enhance its reliability</li> </ul>
--	--	---

**Assessment of Tourism Potential**

<ul style="list-style-type: none"> <li>➤ Safari, Cultural, Beach, Urban, Eco, &amp; Historical tourism <i>(Endemic flora and fauna, attractive physiographic features and tropical climate, sites of historical importance, sunny and sandy beaches, tropical and marine forests and swamps, Swahili/Arab and Mijikenda cultures, the Kaya forests and archaeological monuments in Gede, Malindi, Takaungu, Mnarani and Rabai, the unrivalled beach and marine-based recreational facilities, the creeks at Mtwapa, Mida, Kilifi, Ngomeni and Fundisa bay, Malindi and Watamu Marine Parks)</i></li> </ul>	<ul style="list-style-type: none"> <li>➤ Poor marketing strategies to promote tourism</li> <li>➤ Underdeveloped tourism sites and products</li> <li>➤ Degradation of tourism sites</li> <li>➤ Season based international tourism</li> <li>➤ Threat of terrorism</li> <li>➤ Weak integration of ICT in the development and management of the tourism value chain</li> <li>➤ Encroachment of human activities into the protected area</li> </ul>	<ul style="list-style-type: none"> <li>➤ Plan and provide appropriate tourism support infrastructure</li> <li>➤ Establish County regulation framework for enforcement of the existing regulations for safeguarding protection and conservation areas</li> <li>➤ Promote domestic tourism by providing incentives and subsidies</li> <li>➤ Invest in ICT infrastructure and capitalize on online marketing</li> <li>➤ Increase the tourism market segment within the County</li> <li>➤ Strict enforcement of the existing regulations for safeguarding protection areas</li> </ul>
--	--	---

**Solid Waste Management**

<ul style="list-style-type: none"> <li>➤ Urbanization</li> <li>➤ Enabling legislation, policies and regulatory frameworks to guide solid waste management</li> </ul>	<ul style="list-style-type: none"> <li>➤ Increased solid waste generation due to increased population pressure</li> <li>➤ Inadequate solid wastes management facilities</li> <li>➤</li> </ul>	<ul style="list-style-type: none"> <li>➤ Service all urban settlements by a centralized sewerage treatment system and solid waste disposal facilities.</li> <li>➤ Provide provisions for development of sewer systems and treatment works and solid waste disposal sites within all Physical and Land Use Plans</li> <li>➤ Plan and provide appropriate storm water management infrastructure</li> <li>➤</li> </ul>
--	---	---

**Energy**

<ul style="list-style-type: none"> <li>➤ Abundant potential for wind and solar energy production</li> </ul>	<ul style="list-style-type: none"> <li>➤ Inadequate exploitation of the renewable energy potential in the County</li> </ul>	<ul style="list-style-type: none"> <li>➤ Formulate policies to mainstream green energy generation in the County</li> <li>➤ Identify potential sites and construct solar and wind energy generation plants</li> <li>➤ Prepare policies that promote green energy for expansion, modernization and upgrading of electricity generation and supply</li> </ul>
---	---	--

➤

➤

➤

**Strategy 3: Promoting Balanced Regional Development**

<b>Potential</b>	<b>Constraints</b>	<b>Strategy</b>
<ul style="list-style-type: none"> <li>➤ Kilifi County is Classified under the Northern region and has have potential in Minerals, Tourism Sites, Fishing, Renewable energy &amp; Filming</li> <li>➤ It is further classified</li> </ul>	<ul style="list-style-type: none"> <li>➤ Inadequate infrastructural facilities and services</li> <li>➤ Under-exploitation of resources</li> <li>➤ Weak linkages</li> </ul>	<ul style="list-style-type: none"> <li>➤ Establish economic zones in the County to promote processing and value addition of the various products</li> <li>➤ Encourage equitable exploitation and sound management of the existing mineral resources while ensuring local participation for</li> </ul>

<p>under the Coastal belt and the Blue Economy region which has the highest potential for marine fishing and mariculture, off shore gas and oil production, tourism, energy generation</p>	<p>between the regions</p>	<p>improved economic development</p> <ul style="list-style-type: none"> <li>➤ Promote investment in sustainable tourism including eco-tourism</li> <li>➤ Promote Irrigation activities for improved productivity in quantity and quality of yield within the County</li> <li>➤ Promote industrialization and value addition through the provision of support infrastructure in the County</li> </ul>
--	----------------------------	--

**Strategy 4: Promoting Rural Development**

<b>Potential</b>	<b>Constraints</b>	<b>Strategy</b>
<ul style="list-style-type: none"> <li>➤ Better Developed County - Poverty level below 50% with potentials in Agriculture, tourism, irrigation and dairy production</li> <li>➤ Existing physical and social infrastructure (roads, schools, health centres, administrative units)</li> <li>➤ Human resource (both skilled and unskilled)</li> <li>➤</li> </ul>	<ul style="list-style-type: none"> <li>➤ Low productivity</li> <li>➤ Under-exploitation of resources</li> <li>➤ Slow adoption of technology and innovation</li> <li>➤ Inefficient and dilapidated infrastructure facilities and services</li> <li>➤ weak rural urban linkages</li> <li>➤ Fragmentation of land into uneconomical parcels due to population pressure</li> <li>➤</li> </ul>	<ul style="list-style-type: none"> <li>➤ Develop appropriate transport and infrastructural facilities and services to support the exploitation of the natural resources in the rural areas as well as the opportunities they present to spur economic development</li> <li>➤ Promote rural industrialization which includes, rural tourism, mining and agro-based industries through establishment of production units in different rural areas in relation to their potential</li> <li>➤ Provision of education and training by the established institutions, adoption of modern technology and giving of incentives to the farmers</li> <li>➤ Promote urban containment to reduce effects of urban sprawl into the agricultural areas of the County as well as encouraging eco-villages in the rural areas of the County</li> <li>➤ Provide a spatial framework for harnessing natural wealth renewable energy from both solar and wind</li> <li>➤ Promote sustainable land uses that guarantee secure livelihoods, economic and social growth of the County</li> </ul>

**Strategy 5: Urbanization**

<b>Potential</b>	<b>Constraints</b>	<b>Strategy</b>
------------------	--------------------	-----------------

<ul style="list-style-type: none"> <li>➤ Kilifi town as a County headquarter - <i>Other main urban centres include Malindi, Kilifi, Mtwapa, Kaloleni, Mazeras, Mariakani, Watamu, Magarini, Marereni, Majengo and Bamba</i></li> <li>Human resource (both skilled and unskilled)</li> <li>➤ Existing infrastructure</li> <li>➤</li> </ul>	<ul style="list-style-type: none"> <li>➤ Skewed Spatial distribution of urban centers and urban sprawl within the County</li> <li>➤ Lack of role Specialization of urban centers within the County</li> <li>➤ Underdeveloped urban infrastructure in Kilifi municipality</li> <li>➤ Land and Governance issues</li> <li>➤ Unplanned rural centers</li> <li>➤ Growth of informal settlements within the County(Urban sprawl)</li> <li>➤ Poor implementation of development plans and planning policies</li> <li>➤</li> </ul>	<ul style="list-style-type: none"> <li>➤ Promote the development of centers as per their potential and population as local, market, rural, urban centers and growth centers</li> <li>➤ Carry out an analysis of the strengths of each town within the County and leverage on their competitive advantages</li> <li>➤ Investment in the infrastructure of all the centers to support the identified function</li> <li>➤ Create an enabling environment for commercial and industrial developers</li> <li>➤ Provide alternative areas for development of urban centers within the County by provision of services and infrastructure closer to the rural areas thus urban containment and stimulating rural growth</li> <li>➤ Strengthen urban-rural linkages through provision of integrated transportation and communication system</li> </ul>
---	---	--

## 4.2 National Spatial Plan Policy Guidelines and Measures For Kilifi County

The National Spatial Plan has stipulated policies to provide a foundation upon which to anchor the strategies enumerated therein. The primary aim is to inculcate discipline in the use of land and natural resources of the country thus stemming duplication and wastage of the resources.

This section seeks to provide the spatial policy guidelines and measures aimed at promoting the achievements of the objectives of the National Spatial Plan using its guidelines. These policies are supported by a wide range of measures which spell out the specific actions to be undertaken to actualize the policy intentions. The policies shall be implemented by the County Government's agencies responsible for land use planning and development control as well as the authorities responsible for land administration.

The following are the policies and measures specific to Kilifi County.

**Table 4: NSP Policy Guidelines and Measures for the County**

No	Thematic Area	Policy guideline	Measures
1.	Resource growth potential - Coastal belt and the Indian Ocean  Key urban centres include Mombasa, Malindi, Lamu, Kilifi, Kwale, Lunga Lunga, Mtwapa, Watamu, Ganze, Kaloleni, Msabweni, Ukunda	<ul style="list-style-type: none"> <li>▪ Development of tourism infrastructure in the County</li> <li>▪ Investment in physical and social infrastructure</li> <li>▪ Sustainable use and exploitation of the natural resources</li> <li>▪ Concentrated development around key urban areas within the County</li> <li>▪ Resource conservation and cultural preservation</li> </ul>	<ul style="list-style-type: none"> <li>▪ Selective development concentration</li> <li>▪ Infrastructure provision in key human settlement zones within the County</li> <li>▪ Environmental protection of the marine reserves and forests</li> <li>▪ Conservation of unique cultural landscape and resources</li> <li>▪ Development of small and medium urban Centers within the County</li> <li>▪ Rural development through provision of infrastructure, development of the agricultural sector and related economic activities</li> </ul>
2	Enhancing National	Adoption of selective concentration in	<ul style="list-style-type: none"> <li>▪ Concentrate urban based economic activities such as industrial,</li> </ul>

Competitiveness	planning and location of urban based economic activities in all counties to leverage on national competitiveness	<p>manufacturing and ICT in Kilifi to spur economic development</p> <ul style="list-style-type: none"> <li>▪ Exploit natural resources endowments in the County</li> <li>▪ Prioritize the preparation of Spatial Development Plans to guide development in Kilifi town</li> </ul>
	The major urban areas shall be planned and provided with appropriate infrastructure to enhance efficiency and quality of life	<ul style="list-style-type: none"> <li>▪ Enhance the Livability Index for urban areas by providing quality and affordable housing, efficient public transportation, improving neighborhood characteristics</li> <li>▪ Improve the quality of the environment and healthcare, create job opportunities, and promote civic and social engagement within the County</li> <li>▪ Provide appropriate trunk infrastructure in the form of reliable energy, water, sanitation and ICT</li> <li>▪ Advance Technological Readiness through the provision of technological centers (science parks &amp; research laboratories linked to different levels in the Country</li> <li>▪ Improve the road infrastructure by providing for modal split, linkages and interchanges</li> </ul>
	Optimal and Sustainable utilization of land and natural resources of the County to enhance national competitiveness	<ul style="list-style-type: none"> <li>▪ Encourage the transformation from traditional farming and livestock keeping methods to modern practices</li> <li>▪ Widen the economic base of the less developed regions and places within the County through strengthening of agricultural downstream processing of agricultural products</li> <li>▪ Identify and develop the tourism potential within the County</li> <li>▪ Explore and exploit the minerals, energy and water potentials within the County</li> <li>▪ Provide transportation networks and other infrastructure necessary to support exploitation of land and other natural resources within the County</li> <li>▪ Provide technical training and social development programmes to</li> </ul>

			<p>enhance integration of the communities in the rural areas into the modern economy</p> <ul style="list-style-type: none"> <li>▪ Support development of urban areas in the County to catalyze development</li> <li>▪ Support development of urban areas in the County to catalyze development</li> </ul>
		Enhancing the efficiency of the transportation network to take advantage of the strategic location and position of the County	<ul style="list-style-type: none"> <li>▪ Tap into the developed LAPSET corridor to spur economic development</li> <li>▪ Provide for robust transportation for efficient, modern and low - cost connectivity by Sea, Air, Rail, Road and Fibre Optic</li> <li>▪ Prepare spatial development plans for the main transportation corridors to guide the planning and development of the corridors for sustainable economic development and transportation</li> </ul>
		Promote development of the Blue Economy and its integration into the economy of the Country	<ul style="list-style-type: none"> <li>• Develop human capacity in partnership with the academia to conduct research, explore and exploit the resources available within the County</li> <li>• Ensure, together with other coastal Counties the formulation and implementation of an Integrated Coastal Land Use Plan</li> <li>• Plan, manage and effectively govern the use of marine space and resources, applying inclusive methods and the ecosystem approach</li> <li>• Develop and apply standards, guidelines and best practices that support a sustainable blue economy</li> <li>• Develop the requisite infrastructure for the development of the Blue Economy</li> <li>• Establish and implement a framework for beach management that ensures public access as well as protection and conservation of the beaches</li> </ul>
3	Modernizing	Agro climatic zones I, II, III shall be	<ul style="list-style-type: none"> <li>▪ Urban spatial development plans shall be prepared in respect of</li> </ul>

	Agriculture	safeguarded against the threat of urbanization and land subdivision	<p>urban areas for purposes of setting urban growth limits</p> <ul style="list-style-type: none"> <li>▪ High potential agricultural land falling between the urban areas in the County shall be strictly designated for agriculture production purposes</li> <li>▪ Subdivision of land shall be strictly regulated</li> <li>▪ New urban developments shall be encouraged</li> </ul>
		The use of land in the agricultural potential areas in the County shall be intensified to increase productivity	<ul style="list-style-type: none"> <li>▪ Adopt modern agricultural production methods and practices</li> <li>▪ Upscale the adoption of technology in agricultural production</li> <li>▪ Encourage mixed farming</li> <li>▪ Promote agri-business</li> <li>▪ Provide appropriate infrastructure to support the exploitation of the agricultural potential areas of the County</li> </ul>
		Optimize the fishing potential of the County to increase the food stock and export earnings	<ul style="list-style-type: none"> <li>▪ Protect the inland fishing resources from over fishing, pollution and destruction of the breeding grounds</li> <li>▪ Support the sustainable exploitation of sea fishing resource in the EEZ and the continental shelf</li> <li>▪ Provide appropriate infrastructure to support the fishing industry</li> <li>▪ Increase access to fishing equipment by making them affordable through reduced taxation</li> </ul>
4	Diversifying Tourism	Promote diversification of tourism by offering diverse products	<ul style="list-style-type: none"> <li>▪ Kilifi County together with other Coastal Counties shall develop the coastal circuit to offer; beach and adventure tourism, ecotourism, sport tourism, cultural tourism, medical tourism, MICE (Meetings, Incentives, Conferences &amp; Exhibitions) cultural and heritage, agro tourism, safari and wildlife, ecological, archeological and historical tourism and urban tourism</li> </ul>
		Provide appropriate tourism support infrastructure and facilities	<ul style="list-style-type: none"> <li>▪ Carry out an inventory of tourism infrastructure and facilities in the County</li> <li>▪ Formulate County planning regulations and standards to guide tourist specific infrastructure and facilities</li> </ul>

		<ul style="list-style-type: none"> <li>▪ Develop the requisite tourism support infrastructure and facilities</li> <li>▪ Upgrade the existing tourism facilities and infrastructure</li> <li>▪ Adopt low carbon and green tourism infrastructure options</li> <li>▪ Provide and upgrade the ICT infrastructure to support tourism</li> </ul>
	Tourist attraction areas and sites within the County shall be conserved and protected	<ul style="list-style-type: none"> <li>▪ Prohibit the location of incompatible land use activities and strictly regulate developments within the tourist attraction sites</li> </ul>
	Appropriate transport infrastructure shall be provided to link the different coastal tourist circuits, attraction areas and sites	<ul style="list-style-type: none"> <li>▪ Prepare and implement an integrated Tourism Transportation Master Plan together with the other Coastal Counties</li> <li>▪ Upgrade the Malindi Airport and other air transportation facilities within the County</li> </ul>
	Enhance the Governance of the tourism sector within the County and the entire Coastal circuit	<ul style="list-style-type: none"> <li>▪ Prepare integrated spatial plans to guide development of the tourism sector</li> <li>▪ Prepare and implement National Policies on land use, wildlife and tourism</li> <li>▪ Undertake research to identify more tourist attraction areas and sites and inventorize the agro - tourism sites in the potential areas of the County</li> <li>▪ Enhance tourism dedicated security to the tourism sector</li> <li>▪ Identify and map potential eco -tourism development sites within the County</li> <li>▪ Undertake awareness campaigns on the value of eco-tourism to the industry players locally</li> <li>▪ Develop standards for eco-tourism establishments</li> <li>▪ Facilitate access to eco-tourism development incentives</li> </ul>
	Prepare Spatial Development plans to guide implementation of the flagship projects for the tourism sector	<ul style="list-style-type: none"> <li>▪ Prepare Local Physical and Land Use Development Plans for all the towns in the County</li> <li>▪ Together with other coastal counties Prepare Coastal Beach Ecosystem Management plans</li> <li>▪ Prepare local physical development plans to actualize the Premium</li> </ul>

			<p>Parks Initiative</p> <ul style="list-style-type: none"> <li>▪ Prepare Ecosystem area plans for all parks and reserves in conjunction with national government to address problems of unplanned development of lodges and poor access roads within these areas</li> <li>▪ Prepare plans for the sacred Mijikenda Kaya Forests and cultural heritage sites to actualize the Niche Products Programme</li> </ul>
5	Managing Human Settlements	<p>Plan for the anticipated increase in population in urban areas</p>	<ul style="list-style-type: none"> <li>▪ Increase the housing stock by planning and redeveloping the existing housing areas in the County</li> <li>▪ Plan and designate land for new housing schemes</li> <li>▪ Upgrade the existing and provide additional infrastructure and facilities to support housing development in the urban areas of the County</li> <li>▪ Formulate enabling local policy frameworks to support employment and income generation in the County</li> <li>▪ Provide efficient transportation and quality infrastructure in human settlements to support industrial and service sectors</li> <li>▪ Promote adoption of technology and fiscal incentives and market support for the informal sector in the County</li> </ul>
		<p>Rural growth centers within the County shall be rationalized and supported to act as central places and human settlements shall be clustered to free the agricultural land</p>	<ul style="list-style-type: none"> <li>▪ Provide basic services such as extension services, health facilities, markets, sanitation, water, power and education to improve the quality of rural life</li> <li>▪ Undertake sensitization and awareness campaigns on the need to conserve agricultural land by discouraging land fragmentation</li> <li>▪ Progressively link growth centers by means of secondary roads</li> <li>▪ Promote sectors such as agriculture that have potential to stimulate rural development in the County</li> <li>▪ Incorporate disaster management and mitigation in the planning for rural settlements</li> </ul>

		<p>Human settlements shall be developed in line with environmental and natural resources conservation to improve living conditions</p>	<ul style="list-style-type: none"> <li>▪ Map out and prohibit development in environmentally sensitive areas of the County</li> <li>▪ Plan and provide an integrated waste management system</li> <li>▪ Prepare and implement zoning guidelines to ensure compatibility of land uses in human settlement areas</li> <li>▪ Promote social organization and environmental awareness through the participation of local communities in the identification of public service needs</li> <li>▪ Strengthen the capacity of the local governing bodies to effectively deal with environmental challenges associated with rapid and sound urban growth</li> <li>▪ Empower community groups, Non - Governmental Organizations and individuals to assume responsibility and authority for managing and enhancing their environment</li> <li>▪ Deliberately provide adequate and functional open spaces in urban places within the County</li> <li>▪ Prescribe planning standards for open/green space on private development</li> <li>▪ Encourage non-motorized transport (NMT) and re-introduction of public transport in urban centers within the County</li> </ul>
		<p>Provide an efficient, reliable and effective transport system for human settlements</p>	<ul style="list-style-type: none"> <li>▪ Plan and develop an integrated urban transport system to enhance provision of relevant modal split within the County</li> <li>▪ Integrate land use and transportation planning to encourage development patterns which reduce transport demands</li> <li>▪ Establish an effective transport management system that enhances the reliability and efficiency of the transport system</li> <li>▪ Improve the road conditions and expand the linkages to human settlements</li> <li>▪ Integrate NMT with existing transport infrastructure</li> </ul>

			<ul style="list-style-type: none"> <li>▪ Incorporate the concept of green energy in transport systems planning and redevelopment</li> </ul>
		Upgrade the existing settlements and forestall new informal settlements	<ul style="list-style-type: none"> <li>▪ Encourage redistribution of urban income through integrated development planning encompassing social, economic and physical factors</li> <li>▪ Prepare Local Physical Development Plans for purpose of renewal and/or redevelopment of the informal settlements</li> <li>▪ Implement the housing policy that focuses on providing affordable and accessible housing to all</li> <li>▪ Ease the process of issuance of ownership documents to the legal owners in order to encourage formal developments</li> <li>▪ Enforce development control regulations and adherence to building code and standards</li> <li>▪ Enhance coordination of donor agencies activities within informal settlements by relevant authorities for optimal returns</li> </ul>
		Manage and control peri-urban development to contain urban growth within its limits and protect rural land uses.	<ul style="list-style-type: none"> <li>▪ Formulate policies for urban containment and densification</li> <li>▪ Formulate and implement planning legislation on peri-urban planning and management</li> <li>▪ Institute sanctions on idle land in the County to encourage productive and sustainable land utilization</li> <li>▪ Create green belt buffer zones to define the urban and peri-urban areas</li> <li>▪ Incentivize local farmers to preserve agricultural land by promoting local production and providing ready markets for agricultural produce</li> </ul>
6	Conserving the Natural Environment	All environmentally sensitive areas shall be protected and utilized in a sustainable manner	<p><b>Wetlands</b></p> <ul style="list-style-type: none"> <li>▪ Prepare integrated wetland resource management plans to promote sustainable use of freshwater and wetland resources within the County</li> </ul>

			<ul style="list-style-type: none"><li>▪ Rehabilitate and restore the degraded wetlands and river banks and promote and support establishment of constructed wetlands within the County</li><li>▪ Involve and empower communities in the management of fresh water and wetland ecosystems</li><li>▪ Promote and institutionalize payment for environmental utility services to support catchment protection and conservation</li></ul> <p><b><i>Marine Ecosystem</i></b></p> <ul style="list-style-type: none"><li>▪ Together with other coastal Counties, prepare Integrated Marine Resource Management Plans to promote sustainable use of the Existing marine resources</li><li>▪ Undertake and support research and training in the conservation and management of coastal and marine ecosystems and resources within the County</li><li>▪ Promote closer regional and international cooperation in the conservation and management of marine migratory species</li><li>▪ Harmonize and coordinate the roles of various regulatory agencies charged with the management of coastal and marine resources</li><li>▪ Involve and empower communities in the management of coastal and marine ecosystems</li><li>▪ Implement the Integrated Coastal Zone Management (ICZM) Policy and Integrated Ocean Management Policy, Strategy and Action Plan</li></ul> <p><b><i>Forest Ecosystem</i></b></p> <ul style="list-style-type: none"><li>▪ Prepare Integrated Forest Resource Management Plans to promote sustainable use of forest resources available in the County</li><li>▪ Develop and implement a County strategy for rehabilitation and restoration of degraded natural and indigenous forests and protect water catchment areas with active community</li></ul>
--	--	--	--

		<p>involvement/participation</p> <ul style="list-style-type: none"> <li>▪ Support effective implementation of the forest and other related policies and laws including NEMA and The Forest Conservation and Management Act, 2016 among others</li> <li>▪ Develop and implement County standards, principles and criteria of sustainable forest management</li> <li>▪ Encourage development and implementation of appropriate forestry-based investment programmes and projects</li> <li>▪ Involve and empower communities in the management of forest ecosystems that exist in the County</li> <li>▪ Determine potential areas for farm/agro land forestry</li> <li>▪ Promote a forestation and agro-forestry through County Spatial Planning</li> <li>▪ Map out potential areas for commercial plantation forestry</li> <li>▪ Delineate mangrove forest areas and formulate regulations for sustainable utilization</li> <li>▪ Gazette, protect and rehabilitate degraded forests through re-forestation by replanting trees on land that was previously forests</li> <li>▪ Enforce legal and regulatory provisions for forest management and protection.</li> <li>▪ Indigenous forests shall be identified and protected from logging</li> <li>▪ Involve and empower communities in the management of forest ecosystems through controlled logging, agro-forestry, re-forestation and natural regeneration</li> <li>▪ Encourage development and implementation of appropriate forestry-based Investment programmes and projects</li> </ul>	
		<p>All County Government agencies shall integrate environmental concerns</p>	<p>Waste Management and Pollution Control;</p> <ul style="list-style-type: none"> <li>▪ This will involve research, legislation, use of viable technologies</li> </ul>

		<p>in policy formulation, resource planning and development processes</p>	<p>and enforcement of statutory mechanisms for the disposal of human and industrial waste, elimination of harmful emissions including those from factories and motor vehicles</p> <ul style="list-style-type: none"> <li>▪ Develop and maintain an inventory of all vital habitats in the county, and create a biodiversity information data base of all plant and animal species, indicating their potential use</li> <li>▪ Identify species which are rare and endangered with the aim of protecting them from extinction through the establishment of more biosphere reserves, national parks and reserves, botanical gardens, arboreta, and through their propagation and captive breeding</li> <li>▪ Encourage the participation of local communities in conservation and management of the environment</li> <li>▪ Devise means to measure the value of unexploited natural resources, especially biodiversity, in economic terms.</li> <li>▪ Translate into practical conservation actions the provisions of international conventions and agreements relating to conservation of biodiversity to which Kenya is a party</li> </ul>
		<p>Community participation shall be mainstreamed in the protection and conservation of natural resources</p>	<ul style="list-style-type: none"> <li>▪ Sensitize communities living around the natural resources on the need for conservation of the resources</li> <li>▪ Develop mechanisms for sharing benefits accruing from the natural resources by the conservation agencies in consultation with the local communities</li> <li>▪ Identify and map all disaster prone areas for sustainable management.</li> </ul>
		<p>The County Physical Planning department shall mainstream climate change into their planning processes</p>	<ul style="list-style-type: none"> <li>▪ Build and strengthen research capacity on climate change and related environmental issues within the County</li> <li>▪ Promote water conservation including rehabilitation and restoration of water catchment areas within the County</li> </ul>

			<ul style="list-style-type: none"> <li>▪ Develop and promote the use of green energy in the County</li> </ul>
7	Integrating the Transportation System	Develop an integrated and functional transport system for the urban areas shall	<p><b><i>Air Transport</i></b></p> <ul style="list-style-type: none"> <li>▪ Expand the Malindi airport</li> <li>▪ Provide land for development of the proposed industrial activities of the northern and coastal regions</li> </ul> <p><b><i>Water Transport</i></b></p> <ul style="list-style-type: none"> <li>▪ Develop the coastal sea port of Kilifi and Malindi to serve passenger travel, fishing industry, tourism, other commercial activities and regional needs</li> </ul> <p><b><i>Railway Transport</i></b></p> <ul style="list-style-type: none"> <li>▪ Expand and develop the railway network as a mode of transportation in the County to optimize on land use, limit pollution, reduce road degradation, maximize on freight and passage carriage and improve efficiency and facilitate the trans-shipment of heavy and hazardous goods from the port</li> </ul> <p><b><i>Road Transport</i></b></p> <ul style="list-style-type: none"> <li>▪ Link all major urban centres within the County with the railway system via the modern railway network with the rail stations acting as focal points for community and transportation activities</li> <li>▪ Provide access and linkage, between County headquarters; County headquarters and sub – County headquarters and for local access and link them to national transportation corridors</li> <li>▪ Expand all roads connecting County headquarters to at least 60m and developed to bitumen standard</li> <li>▪ Expand all roads connecting County headquarters to sub-county headquarters to at least 30m and developed to bitumen standard</li> </ul>
		An urban transport policy that facilitates an integrated, balanced and	<ul style="list-style-type: none"> <li>▪ Develop a public transport policy to regulate planning and management of public transport</li> </ul>

		<p>environmentally sound urban transport system in which all modes efficiently play their roles shall be developed</p>	<ul style="list-style-type: none"> <li>▪ The County Government to develop policies to limit use of private transport and maximize on public transport</li> <li>▪ Develop a main public transport termini in all major urban areas the County and the County headquarters to cater for all the various transport modes, including NMIMT (Non-Motorized and Intermediate Means of Transport) to enhance efficiency and connectivity between transport modes</li> <li>▪ The County Government provide a framework for development and management of public service termini by the private sector through public private participation</li> <li>▪ Restrict entry of private vehicles into the CBDs (Central Business District) of the major urban areas of the County and construct park and ride terminal facilities at designated entry points to absorb traffic into public transport</li> <li>▪ Plan, construct and manage designated terminal facilities in the periphery of the urban areas in the County to accommodate parking spaces for the private vehicles and interchange to the public transport system</li> <li>▪ Incorporate an integrated transport network in County and urban development plans</li> <li>▪ Implement a 24-hour economy to distribute traffic flows on urban roads in the County and alter working shifts and save on cost of travel time</li> <li>▪ The County Government to identify, plan and control developments in the satellite towns</li> <li>▪ The County Government to identify, designate, close and regulate roads to be used by hawkers to display their wares on chosen days and times to decongest the CBDs (Central Business District) of the major urban centers in the County</li> </ul>
--	--	--	--

			<ul style="list-style-type: none"> <li>▪ Designate, plan and regulate strategic areas for taxis operation in the urban areas of the County enhance safety and order</li> </ul>
		Environmental conservation shall be upheld in the planning, development and management of the transportation network	<ul style="list-style-type: none"> <li>▪ Construction and management of the transport network to abide by environmental regulations and standards</li> <li>▪ All transport network providers to implement international environmental legislation/ agreements; the Clean Air Initiative resolutions that commit African countries to adopt less polluting fuels</li> <li>▪ Enforce emission testing in all transport modes and set standards and guidelines for decommissioning of vehicles</li> <li>▪ Promote the use of green energy in all transportation systems</li> </ul>
8	Providing appropriate infrastructure	Expansion and improvement of water reticulation systems to facilitate the access to clean, safe, adequate, reliable and affordable water in human settlements shall be promoted	<ul style="list-style-type: none"> <li>▪ Construct and rehabilitate water supply systems in the County</li> <li>▪ Incorporate water provision in all Physical and Land Use Development plans</li> <li>▪ Improve water supplies in the major urban areas of the County</li> <li>▪ Expand water supply in all regions of the County</li> <li>▪ Build water kiosks and yard taps, develop water supply pipeline systems and sewers, and a comprehensive mapping of all water supplies systems in the informal settlements</li> </ul>
		A globally competitive, accessible and affordable education, training and research facilities shall be promoted	<ul style="list-style-type: none"> <li>▪ Universities and other tertiary institutions to invest in research, technology &amp; innovation</li> <li>▪ Expand access and equity, improve quality and relevance and invest in human resource by enhancing institutionalization of excellence and increasing the level of research funding</li> <li>▪ Mainstream ICT in higher education and training to</li> <li>▪ Develop and upgrade physical infrastructure in all education institutions to increase their capacity</li> </ul>
		Appropriate, quality, efficient and cost effective ICT infrastructure in both rural and urban areas shall be	<ul style="list-style-type: none"> <li>▪ Develop and upgrade ICT Infrastructure to cover all the rural and local growth centers the County</li> <li>▪ Mainstream use of ICT in government services (e-government)</li> </ul>

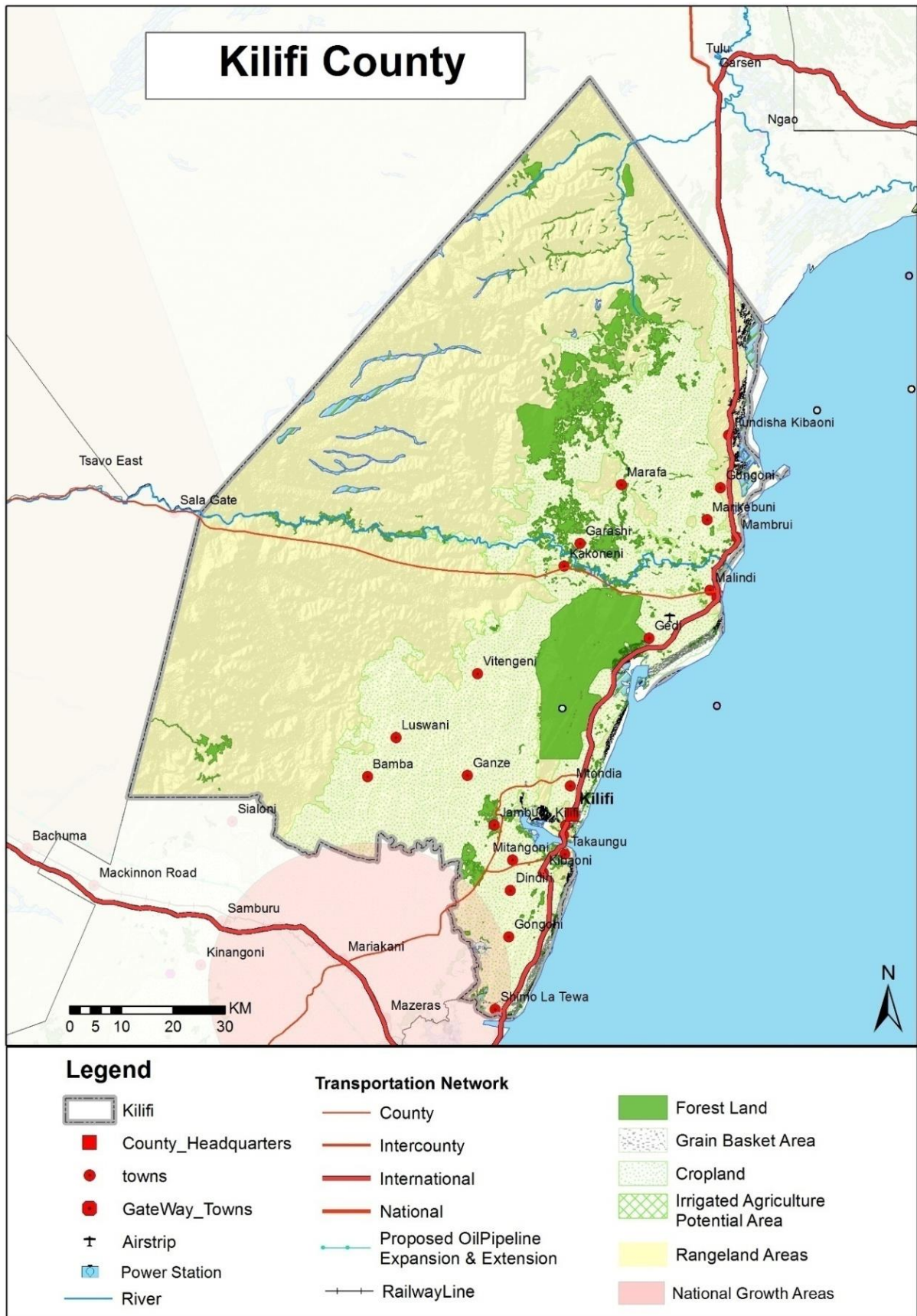
		promoted	
		The expansion of sewerage systems and waste management facilities shall be promoted to improve sanitation in human settlements	<ul style="list-style-type: none"> <li>▪ Expand the sewerage coverage and capacity for Kilifi town and other urban settlements within the County</li> <li>▪ Apply appropriate technology solutions to sewerage treatment in rural and low density housing areas</li> <li>▪ All spatial plans to make provision for development of sewer systems and treatment works and solid waste disposal sites</li> <li>▪ Expansion of urban boundaries to be guided by investment in infrastructural services</li> <li>▪ Adopt appropriate technology to facilitate reduction, recycle and reuse of waste (3R's).</li> <li>▪ Undertake rehabilitation of storm water drainage systems in all urban areas</li> </ul>
		Plan, develop and maintain sporting infrastructure shall in the County.	<ul style="list-style-type: none"> <li>▪ Establish County Sports Talent Centers to act as feeds to the international centre to scout, nurture and develop sports talents at the County levels</li> <li>▪ Rehabilitate the County stadia to international standards to enable the youth to actively develop and tap the immense talent in sports</li> </ul>
9	Promoting Rapid industrialization	Promote the cluster development strategy to focus on proximity to raw materials and markets of County specific products	<ul style="list-style-type: none"> <li>▪ Concentrate urban-based industries in Kilifi town</li> <li>▪ Mineral-based and cottage industries to be located in-situ where the minerals are found</li> <li>▪ Promote value addition in processing of local produce in the County</li> </ul>
		Identify, plan specific sites for industrial development and service with the appropriate infrastructure	<ul style="list-style-type: none"> <li>▪ Plan and set aside land for industrial development</li> <li>▪ Establish Special Economic Zones in Kilifi</li> <li>▪ Develop SME and Industrial Parks in the County</li> <li>▪ Integrate the industrialization process and environmental conservation</li> </ul>

			<ul style="list-style-type: none"> <li>▪ Provide an integrated, efficient, reliable and sustainable road transport infrastructure</li> <li>▪ Increase availability of clean water and improve sanitation</li> <li>▪ Encourage the discharge of safe/ clean industrial waste into water bodies</li> <li>▪ Encourage adoption and utilization of ICT in the County in order to enhance the country's transformation towards an advanced Information Society</li> </ul>
		Adequate and affordable energy supply for the industrial sector shall be provided	<ul style="list-style-type: none"> <li>▪ Adopt renewable energy generation programmes by provision of incentives and enforcement of building laws requiring utilization of renewable Energy to lower the demand for energy</li> </ul>

Map 3 below provides spatial representation of the policies proposed for Kilifi County

DRAFT

**Map 3: NSP Proposals for Kilifi County**



**Source: State Department for Physical Planning, 2022**

## **5 IMPLEMENTATION AND ADOPTION OF THE GUIDELINES**

### **5.1 Overview**

The implementation framework identifies activities and further ties them with responsible actors, resources and timeframes adequate for their execution. It constitutes a deliberately established method, means or system of ensuring that the policies, strategies and measures outlined in the guidelines are continuously and consistently executed to achieve their objectives.

To effectively implement the guidelines, the various sectors, actors and levels of planning have been identified and have to work together and the mandate of the sectors at the National and County levels of planning have to be integrated.

### **5.2 Implementation Channels**

The County Specific Guidelines will be implemented through various approaches including:

1. Preparation of spatial plans to integrate and conform to the proposals of the County Guidelines. The plans include:
  - Inter-County Physical and Land Use Development Plans for Metropolitan regions, conservation zones, river basins, water towers, coastal ecosystems, trans-boundary resource areas and transport corridors, among others.
  - County Physical and Land Use Development Plans.
  - Local Physical and Land Use Development plans for Cities, Urban areas, special area plans, subject plans and detailed neighbourhood plans, among others.
  - Sectoral plans
2. Integration of the guideline policies, strategies and measures into the County sector plans, programs and projects. Ministries, Departments and Agencies (MDAs), County and National Departments identified in the plan to administer the policies, strategies and measures are required to translate them into action plans, programmes and projects and to include them in their subsequent sector plans.

3. Formulation of policies, regulations and standards to guide development control.

### **5.3 Implementation Framework**

The implementation of the various policies, strategies, measures, programmes and projects under these guidelines will involve a wide range of actors. It will require a coordinated approach and partnership between the National and County Governments and non-state actors. It may require re-engineering of institutions and a number of actors to undertake the implementation through a harmonized approach.

The National Spatial Plan identified a multi-levelled framework for implementation of the plan that incorporates all levels of actors. In this regard, the institutions identified in the NSP to undertake implementation of the plan at County-level shall also be mandated to ensure implementation of this Guidelines.

The following are the Institutions mandated to ensure implementation of the County Specific guidelines;

#### **5.3.1 County Physical Planning Committee**

The role of the County Planning Committee shall be to ensure aspirations of the guidelines are articulated in preparation of the County Spatial Plans, County Integrated Development Plans and Local Physical and Land Use Development Plans.

The composition of this committee consists of;

- i. The Governor who will be the Chairperson,
- ii. the Deputy Governor,
- iii. the County Executive Committee Members from various sectors
- iv. Directors from various relevant County Departments including Lands and Physical Planning, Economic planning, Agriculture, Industrialization, Tourism, Environment, Transport and Infrastructure

The functions of the committee include;

- 1) To promote effective integration between physical, economic and sectoral planning within the framework of county development policies.

- 2) To provide policy guidance for the implementation of strategic spatial projects
- 3) To ensure that the guidelines policies and measures are mainstreamed in the various county plans.
- 4) To mobilize resource for implementation of the guidelines.

### **5.3.2 County Planning Unit (CPU)**

The Technical Unit shall provide technical support to the various implementing County departments on issues relating to physical planning.

The CPU shall;

- i. Monitor the Implementation of the guidelines.
- ii. To disseminate components of the guidelines to the various county departments.
- iii. Update the County Physical Planning Committee on a regular basis on the implementation of the guidelines.

The County Director of Physical Planning shall be responsible for preparation of an annual state of planning report which shall among other things appraise the status of implementation of the guidelines.

### **5.3.3 National Land Commission**

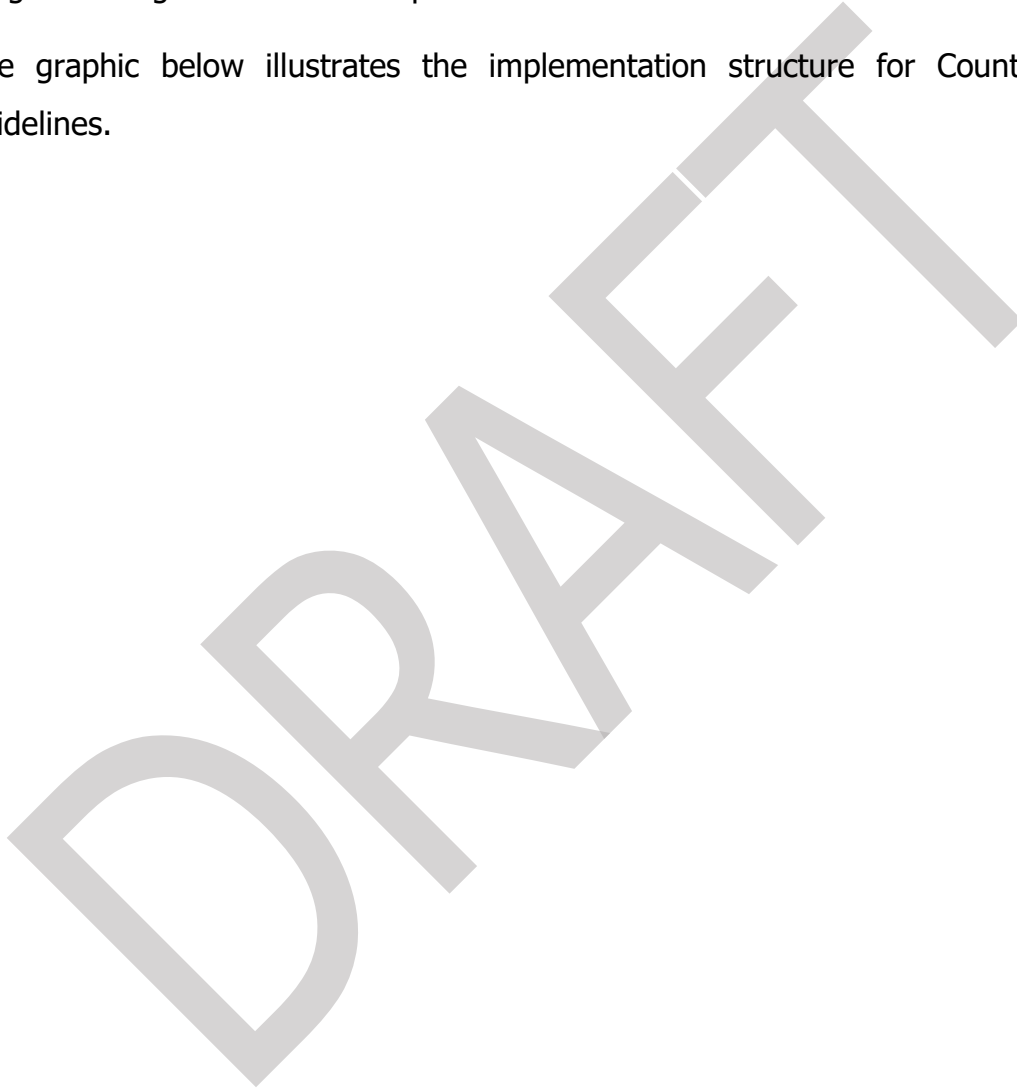
The National Land Commission shall play its oversight role in land use planning to ensure efficient implementation of the NSP and the guidelines. Other functions of the Commission in the implementation of the NSP and the guidelines include the following: To formulate mechanisms and parameters for monitoring and overseeing land use planning.

- i. To ensure that relevant planning authorities carry out their functions as required by law.
- ii. To make recommendations for improvements of the planning systems in the county.
- iii. To mobilize resources to support physical/land use planning.

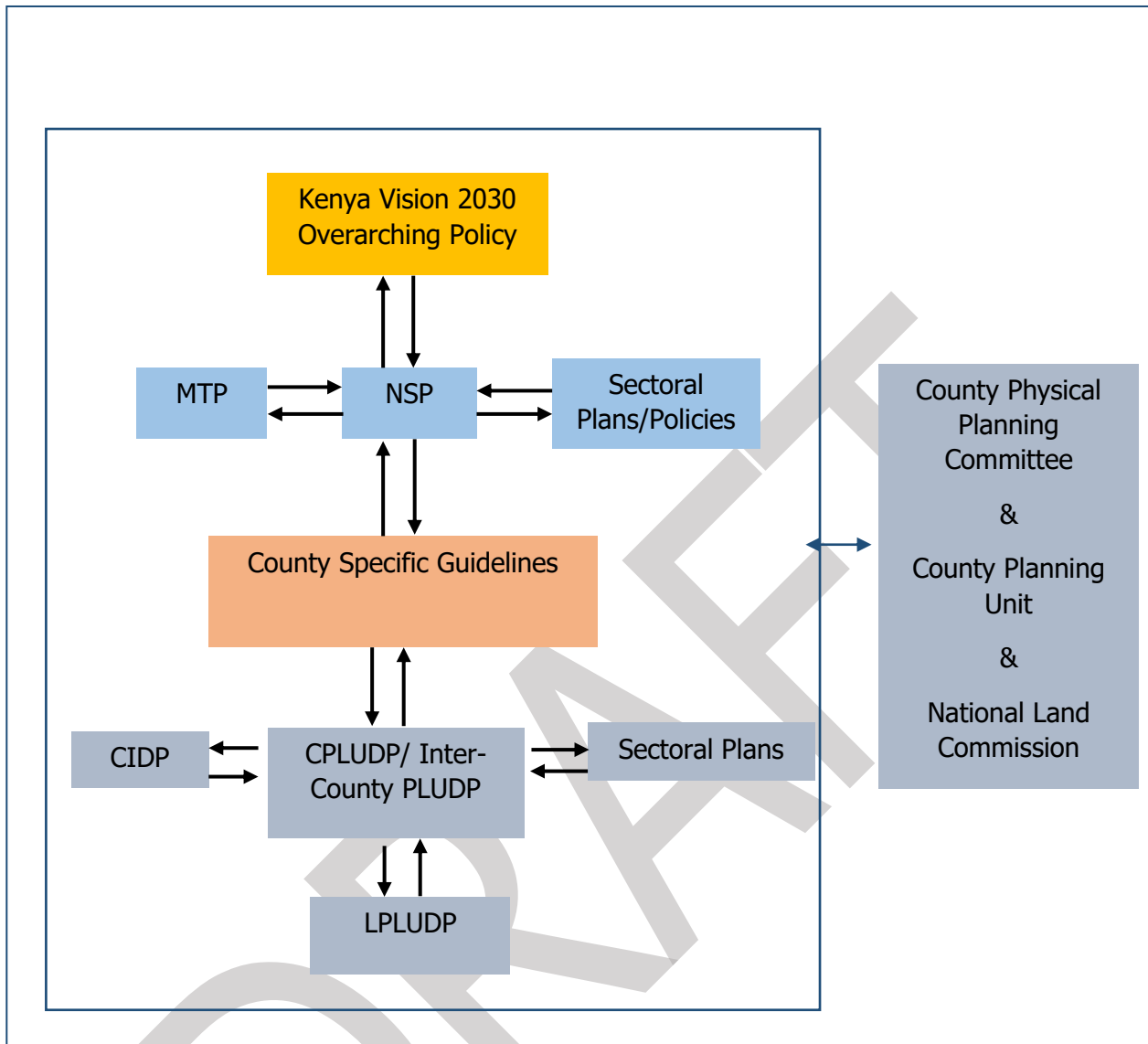
## 5.4 Monitoring and Evaluation

Implementation of the guidelines will be monitored and evaluated to measure both outputs and outcomes and ensure that the intended actions are implemented in a timely manner. To facilitate attainment of the objectives of the guidelines, performance indicators will be developed by the County Physical Planning Department for efficient monitoring. Periodic reports will be prepared in relation to progress being made in their implementation.

The graphic below illustrates the implementation structure for County Specific guidelines.



**Figure 4: NSP Implementation Organizational Structure**



**Source: The National Spatial Plan, 2015**

## **5.5 Conclusion**

The application of these guidelines will be undertaken by a number of actors and hence the need for a coordinated approach. The lead agency will be Kilifi County Government which will be responsible for implementing various county specific initiatives proposed by the guidelines.

The National Government, County Government of Kilifi, the private sector and the general public will be critical in actualizing the objectives of these guidelines. The County Physical Planning Committee shall develop a communication strategy to enhance the synergies.

The National Department of Physical Planning shall undertake sensitization, training and capacity building of the County Government and National Government institutions and agencies that will be involved in the implementation of these guidelines. Special attention will be given to the County physical planning units, as they will be expected to provide technical expertise in the implementation of the County specific policies and strategies.