



# NATIONAL SPATIAL PLAN GUIDELINES FOR KIRINYAGA COUNTY

Optimal productivity, sustainability, efficiency and equity in  
use of our land and territorial space



JUNE 2022

MINISTRY OF LANDS AND PHYSICAL PLANNING  
DEPARTMENT OF PHYSICAL PLANNING



## **Foreword**

The Constitution of Kenya apportions responsibility of planning to both National and County Governments. Under the Fourth Schedule on distribution of functions, Part 1 (21) and (32) mandates the National Government with the responsibility of formulating general principles of land planning, co-ordination of planning by the Counties, capacity building and technical assistance to the Counties. On the other hand, Part 2(8) allocates the function of County planning and development to County Governments. It is under these provisions that the County specific guidelines have been prepared.

The Department of Physical Planning prepared the National Spatial Plan (NSP) in response to the Kenya Vision 2030 to guide the spatial development of the country over a period of 30 years beginning in 2015.

It aims at achieving an organized, integrated, sustainable and balanced development of the country by providing a framework for better national organization and linkages between different activities within the national space.

To implement the Plan, the Counties are expected to play a key role by mainstreaming strategies, policies, and measures identified in the NSP into the County spatial planning systems.

The guidelines have identified planning policies, strategies, and measures that Plans at the County level are expected to mainstream and propagate. The policies address among others, the protection of rich agricultural land, development imbalances, conservation of environmentally sensitive areas, urban containment, and promotion of industrial development.

The guidelines provide direction on the existing potentials, the opportunities, the constraints/challenges inhibiting harnessing of the potentials, the strategies to apply, respective policies required, and the necessary measures to achieve optimal productivity, sustainability, efficiency and equity in the use of county land resources.

The guidelines are an opportunity on how best to refocus, vary and complement areas that require different approaches responding to country-specific needs and promote the livelihoods of their people, while contributing to the national aspirations of vision 2030, regional objectives of the Africa Agenda 2063, and international targets of sustainable development. The refocusing will also be handy in reviewing and making decisions on NSP which is due for review in 2025.

These guidelines are therefore a tool for enhancing this critical path and provide a direction for development planning by the Counties as they discharge their responsibility of preparing county and local physical and land use development plans. The guidelines will also ensure that the County Integrated Development Plans conform to the proposed County specific policy guidelines and measures.

DRAFT

## **Preface**

The National Spatial Plan(NSP) recognizes that Kenya is greatly endowed with massive and diverse resources distributed over the national space that require an integrated and coordinated approach for optimal productivity and sustainability.

The County Specific Guidelines have been derived from the National Spatial Plan and provide a planning framework for the integration of the NSP into the county spatial planning system. They are clear statements linking the National Spatial Plan to Inter-County, County and lower-level Physical and Land Use Development Plans and provide clarification on the anticipated sustainable development outcomes of implementing the Plan.

The County Government will adopt, develop and implement their plans based on the policies, strategies, and measures articulated in the guidelines. The realized county plans are expected to guide, harmonize and facilitate development within the county, hence contributing to the overall implementation of the NSP.

The guidelines also form an efficient compass and monitoring tool for National and County Governments to jointly pursue sustainable planning and appropriate implementation mechanisms.

For the county to be nationally competitive, there is need to balance development and promote optimal utilization of land and land-based resources as well as cultivate an integrated approach in addressing the intertwined challenges of regional imbalances/inequalities, rural development, underutilization of the available resources, uncontrolled urbanization, environmental degradation and inefficient transportation. It is imperative therefore, to prioritize the implementation of this strategic document so as to promote balanced development and competitiveness across the county.

## **Executive Summary**

The County Specific Guidelines seek to facilitate the implementation of the National Spatial Plan by outlining policies, strategies and measures to guide County spatial planning and development and promote optimal productivity, sustainability, efficiency and equity in the use of land. They provide a framework for preparation of lower level Plans including Inter-County, County and Local Physical and Land Use Development Plans.

The disconnect between National and County Spatial Planning and development has resulted in uncoordinated and unbalanced development, therefore creating a need for a clear structure that links National, Regional and Local planning and development. This is achievable through integration of the policies, strategies and measures proposed by the guidelines into County Spatial Plans, Programs and Projects, to tackle challenges of unbalanced regional development, urbanization, national competitiveness and unsustainable use of land and natural resources.

The County Specific Guidelines are organized into five chapters detailing various facets. Chapter one provides an overview, purpose and justification of preparation of the guidelines. It also outlines the objectives that the guidelines intend to achieve and details the preparation process as well as intended users. This chapter highlights the key principles that form the basis for preparation of lower level plans including public participation, livability, sustainable development, urban containment, smart urban growth among others.

Chapter two details the legal and policy provisions that the guidelines are anchored upon. They include, among others, The Constitution of Kenya, 2010, The Physical and Land Use Planning Act No.13 of 2019, County Government Act, 2012, Environmental Management and Coordination (Amendment) Act, 2015, Sessional Paper No. 01 of 2017 on National Land Use Policy and Sessional Paper No. 10 of 2012 on Kenya Vision 2030.

The third chapter analyses the county profile, detailing its location, size, bio-physical characteristics, socioeconomic status and the County's comparative advantage in relation to others. The locational context provides information on the geographical position and bordering Counties while the biophysical context discusses the topography, hydrology and climate. The socioeconomic status indicates key economic drivers of the County and its population and demographic structure.

Chapter four presents the County specific issues and proposes development strategies to promote national competitiveness, optimal use of land and resources, rural development, balanced intra-county development and urbanization. Additionally, it provides policy guidelines and measures for County advancement.

The final chapter five focuses on implementation and adoption of the guidelines. The implementation framework identifies institutions, County development programs and projects, and further ties them with responsible actors, resources and timeframes for effective execution. It proposes a framework for ensuring that the outlined policies, strategies and measures are adequately implemented.

# Table of Contents

Acknowledgment	
<b>Foreword</b> .....	ii
<b>Preface</b> .....	iv
<b>Executive Summary</b> .....	v
List of tables .....	ix
List of maps .....	ix
List of Figures .....	ix
<b>1 Introduction</b> .....	1
1.1 Background .....	1
1.2 Purpose .....	1
1.3 Objectives.....	2
1.4 Scope.....	2
1.5 Justification .....	3
1.6 Application of the Guidelines.....	3
1.7 Process of preparing the Guidelines.....	4
1.8 Targeted users of the Guidelines.....	5
1.9 Key Principles .....	7
<b>2 The Policy, Legal and Planning Framework for The Guidelines</b> .....	8
2.1 Constitutional context .....	8
2.2 Policy Context .....	8
<b>2.2.1 Sessional Paper No. 10 of 2012 on Kenya Vision 2030</b> .....	8
<b>2.2.2 Sessional Paper No. 01 of 2017 on National Land Use Policy</b> .....	8
2.3 Legal context.....	9
<b>2.3.1 The Physical and Land Use Planning Act No. 13 of 2019</b> .....	9
<b>2.3.2 County Governments Act, 2012</b> .....	9
<b>2.3.3 Urban Areas and Cities (Amendment) Act, 2019</b> .....	9
<b>2.3.4 Environmental Management and Coordination (Amendment) Act, 2015</b> .	9
<b>2.3.5 National Land Commission Act, 2012</b> .....	9
2.4 Planning Context.....	10
<b>2.4.1 National Spatial Plan (NSP)</b> .....	10
<b>2.4.2 NSP linkage to other plans</b> .....	11

<b>3</b>	<b>County Profile</b> .....	13
3.1	Locational Context .....	13
3.2	Bio-Physical Context.....	15
3.3	Socio-economic Background.....	15
3.4	Kirinyaga County Comparative Advantage .....	18
<b>4</b>	<b>County Specific Issues, Development Strategies and Policy Guidelines</b> .....	20
4.1	Kirinyaga County Development Strategies .....	20
4.2	Spatial Policy Guidelines .....	30
<b>5</b>	<b>Implementation and Adoption of The Guidelines</b> .....	42
5.1	Overview .....	42
5.2	Implementation Approaches .....	42
5.3	Implementation Framework .....	43
<b>5.3.1</b>	<b>County Physical Planning Committee</b> .....	43
<b>5.3.2</b>	<b>County Planning Unit (CPU)</b> .....	44
<b>5.3.3</b>	<b>National Land Commission</b> .....	44
5.4	Monitoring and Evaluation .....	45
5.5	Conclusion.....	47

## List of tables

Table 2 :Population Projection Summary .....	16
Table 3: Strategies for Kirinyaga County .....	21
Table 4: Policy Guidelines for Kirinyaga.....	32

## List of maps

Map 1: Locational Context of Kirinyaga County.....	14
Map 2: Kirinyaga County Existing Situation.....	19
Map 3: NSP Proposals .....	41

## List of Figures

<b>Figure 1: The Scope of the Guidelines.....</b>	<b>3</b>
<b>Figure 4: Implementation structure of the guidelines.....</b>	<b>46</b>

DRAFT

# **1 Introduction**

## **1.1 Background**

The County Guidelines set out policies, strategies and measures that will guide the long-term spatial development of the county for a period of 30 years. They cover the entire county and defines the general trend and direction of its spatial development.

The guidelines have been developed in line with the four thematic areas as outlined in the NSP. They provide a guide to the Planning Authority at the county on how to incorporate the NSP policies, strategies and measures during the preparation of County Spatial Plans and other lower level plans like the Local Physical and Land Use Development Plans consequently implementing the NSP.

The NSP County Specific implementation guidelines summarize the County's existing potentials and opportunities, the constraints (challenges) inhibiting harnessing of the potentials, the applicable strategies and respective policies required, and the necessary measures to achieve optimal productivity, sustainability, efficiency and equity in the use of the county land resources. They act as a reference point

## **1.2 Purpose**

The purpose of the County Specific Guidelines is to provide a planning framework for mainstreaming of the National Spatial Plan to the County spatial planning system.

The guidelines are intended to assist the County enhance the implementation of the NSP by linking the proposed county specific policies, strategies and measures into the County plans, programs and projects while putting measures in place for achieving them. The guidelines inform preparation of various County Physical Plans such as the County Physical and Land Use Development Plans.

For optimal implementation of these plans, a County Integrated Development Plan (CIDP) is essential since it is a sectoral and budgetary based plan that draws its implementation programs and projects from the County Physical Plans.

### 1.3 Objectives

The guidelines provide policies, strategies and measures to deal with challenges of regional imbalances/inequalities, rural development, underutilization of the available resources, urbanization, environmental degradation and inefficient transportation.

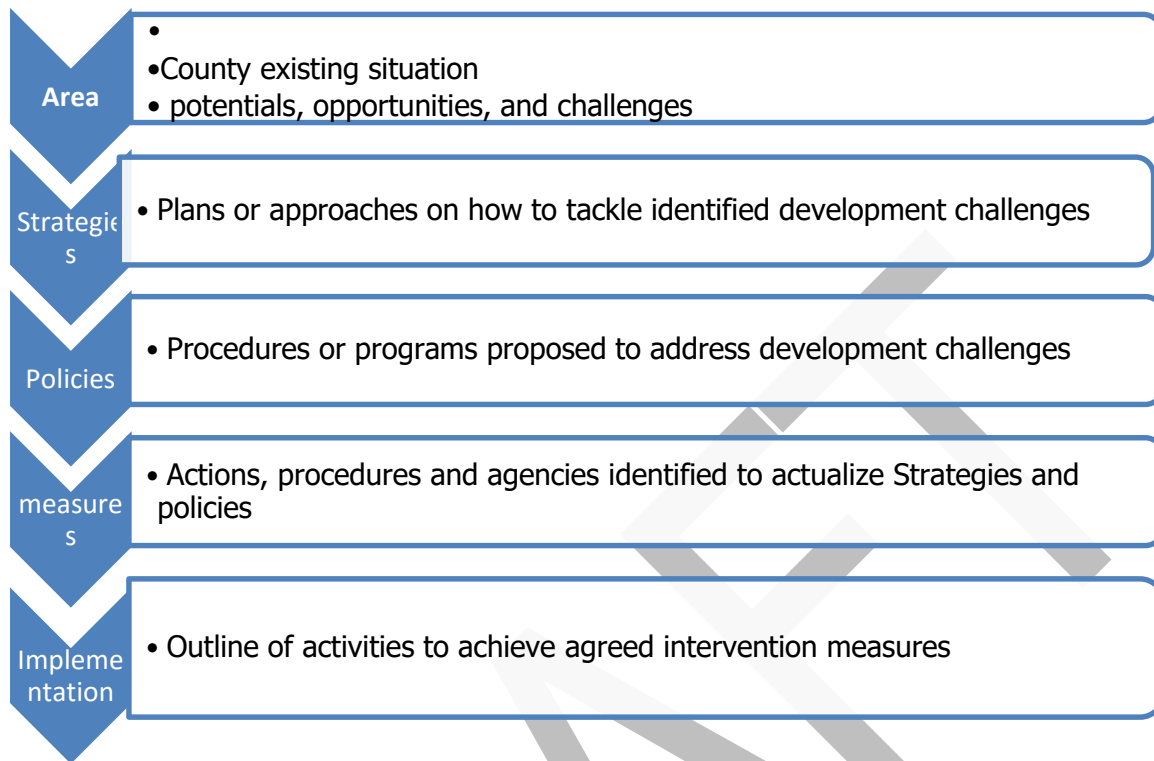
Specifically, the objectives are;

1. To sensitize the County on the provisions of the NSP
2. To promote synergy between National and County planning
3. To guide the County, implement the NSP
4. To identify the roles of the different actors in the implementation of the NSP.

### 1.4 Scope

The guidelines comprise policies, strategies and measures specific to Kirinyaga County covering approximately 2037 km<sup>2</sup>. The guidelines highlight the County's existing potentials and opportunities, the constraints (challenges) inhibiting harnessing of the potentials, the applicable strategies and respective policies required, and the necessary measures, actions, approaches, plans and procedures prescribed to achieve optimal productivity, sustainability, efficiency and equity in the use of the county's land resources and an outline of activities to execute agreed interventions as captured in the National Spatial Plan, as indicated in Figure 1 below. These guidelines are effective up to the year 2045.

**Figure 1: The Scope of the Guidelines**



**Source: State Department for Physical Planning, 2022**

### 1.5 Justification

Since the approval and launch of the NSP, its implementation has been undertaken in an uncoordinated manner hence the guidelines will provide a standardized approach for all Counties. The guidelines are also an important tool for tracking and evaluating implementation of the NSP both at National and County levels.

The preparation of County Spatial Plans and other lower-level plans which is a mandate of Counties has been slow and, in some Counties, has not begun at all. These guidelines are therefore a quick reference in preparation of county plans and for some Counties to help optimize land in the absence of these plans.

### 1.6 Application of the Guidelines

The guidelines will be used or applied in the following ways to achieve a more sustained and coordinated development of the County;

- To effectively coordinate planning between the National and the County Government;
- To improve the County Government's capacity to formulate, coordinate and implement integrated development policies, strategies, measures, programs and projects to address spatially unbalanced development;
- To inform strategic infrastructure policy and public investment decisions which support the achievement of balanced development in the County;
- To strengthen County inter-sectoral coordination within a spatial framework and provide the private sector with a clear context in which they can make investment decisions;
- To optimize the use of land and natural resources by providing a framework for making sustainable locational choices for sustainable development and conservation of land productivity in the County.

### **1.7 Process of preparing the Guidelines**

The process involved reviewing the National Spatial Plan and identifying key issues, spatial policies, development strategies and measures specific to Kirinyaga County. These key issues, spatial policies, development strategies and measures will be realized through preparation of County and other lower-level plans.

Research was undertaken on various thematic areas to enrich the County specific issues and development strategies as well as policy guidelines and measures/ interventions. Further, preparation of the guidelines considered the constitutional, policy and legal provisions on physical and land use planning. Expert opinion was sought on the identified issues, policies, measures and strategies for implementation viability.

The preparation of the guidelines was identified as one of the implementation tools of the NSP, in which key NSP issues, policies, strategies and measures were translated into specific action plans, programs and projects at the County level.

## 1.8 Targeted users of the Guidelines

These Guidelines have diverse consumers and application depending on prevailing circumstances and actors as demonstrated in Table 1 below:

**Table 1: Targeted Users of the Guidelines**

User	Application
County Executive Committee Member in charge of Physical and Land Use Planning	<ul style="list-style-type: none"> <li>● Preparation of county and lower-level plans</li> <li>● Linkage of planning structures</li> <li>● Quality control of the various county plans</li> <li>● Formulate county planning policies and strategies</li> <li>● Establish county specific planning institutions</li> <li>● Coordinate and implement county plans and policies</li> </ul>
The County Director of Physical and Land Use planning	<ul style="list-style-type: none"> <li>● Advising the county government on the impact of the county specific guidelines to the county</li> <li>● Preparation of County physical and land use development plans and other lower level plans</li> <li>● Formulating County physical and land use planning policies, guidelines, strategies, and standards;</li> <li>● Issuance of development permission and other development control instruments under The Physical and Land Use Planning Act, 2013.</li> </ul>
Licensed physical and land use planners both in public and private sectors	<ul style="list-style-type: none"> <li>● Prepare, coordinate and implement spatial plans</li> <li>● Quality control of plans and consultancy services</li> <li>● Formulate policies, strategies and development guidelines</li> <li>● Dispute resolution</li> </ul>
County assembly	<ul style="list-style-type: none"> <li>● Approval of strategic sectoral budgets such as planning</li> <li>● Vetting of various County specific plans</li> </ul>

	<ul style="list-style-type: none"> <li>● Formulation and passing of County planning legislation</li> <li>● Enhance capacity to oversee the executive on spatial planning</li> </ul>
Ministries, Departments and Agencies	<ul style="list-style-type: none"> <li>● Mainstreaming relevant NSP policies, programs and projects</li> <li>● Allocation of resources to priority areas,</li> <li>● Strengthening linkages with spatial planning in resource management</li> </ul>
The National Land Commission (NLC)	<ul style="list-style-type: none"> <li>● Oversight role in land use planning to ensure efficient implementation of the NSP</li> <li>● Ensure relevant planning authorities carry out their functions as required by the law</li> </ul>
Practitioners in the built environment	<ul style="list-style-type: none"> <li>● Advance NSP relevant policies, programs and projects hence optimization of land resource</li> <li>● Appreciate sectoral Linkages to spatial planning</li> <li>● Facilitate incorporation of the policies, strategies and measures into, County specific plans</li> </ul>
Community, developers and investors	<ul style="list-style-type: none"> <li>● Comprehend the County priority sectors and County Plans and policies</li> <li>● Complement County spatial planning and implementation measures</li> <li>● Making informed investment decisions</li> </ul>
Development partners	<ul style="list-style-type: none"> <li>● Reference frame for selecting and funding spatial planning activities</li> <li>● Understand planning linkages and implementation</li> <li>● Informed development decisions</li> </ul>
Training institutions	<ul style="list-style-type: none"> <li>● Compliment the curriculum for training of spatial planners</li> <li>● Understand the planning procedures and processes</li> </ul>

## 1.9 Key Principles

The principles, as applied in the NSP, should guide and form the basis upon which the lower-level physical and land use plans are prepared. Further the principles should ensure sustainable, coordinated, and realistic development. They include the following:

- 1. Effective Public participation/engagement:** All plans shall be prepared in a participatory and consultative manner with relevant stakeholders and sectoral actors.
- 2. Urban containment/Compact cities:** Local plans shall strive to limit and control urban growth within the set urban boundaries to protect rich agricultural land, mitigate urban sprawl and reduce cost of infrastructural provision.
- 3. Livability:** The planning of urban areas shall enhance the livability index in the area of housing, environment, transportation, health, and social engagement. The urban areas must be economically viable, socially inclusive and ecologically sustainable.
- 4. Smart and green urban growth:** Plans shall promote sustainable use of energy, creation of green spaces, reduce the need for car travel, and promote use of local materials, support businesses, protection of heritage and creation of unique character.
- 5. Sustainable development:** Balancing social, economic and environmental dimensions of development and catering for current and future generations.
- 6. Promotion of ecological integrity:** Plans shall promote the protection and conservation of environmentally sensitive areas.
- 7. Promote public transportation:** Favor public transportation over private transport to ensure efficiency and functionality of urban places.
- 8. Balanced development:** Plans to ensure there/ is balanced development in the County to cure inequalities.

## **2 The Policy, Legal and Planning Framework for The Guidelines**

### **2.1 Constitutional context**

The formulation of these guidelines took into account the Constitution of Kenya 2010 aspirations and Principles. Article 66 of the Constitution of Kenya 2010 gives the State powers to regulate use of any land and property in the interest of land use planning among others. The guidelines are therefore within and in response to the aspirations, values and principles as provided for in the constitution.

### **2.2 Policy Context**

#### **2.2.1 Sessional Paper No. 10 of 2012 on Kenya Vision 2030**

Kenya Vision 2030 is the overarching national development framework which all plans should be aligned to. The preparation of all spatial plans should take cognizance of the aspirations, foundations and development concepts of the vision. The preparation of the first National Spatial Plan is identified in Kenya Vision 2030 as a flagship project and is regarded as one of the foundations for socio-economic transformation. Hence the need for linkage between national planning and county planning which will be achieved through mainstreaming NSP requirements into CSPs and other lower-level plans by preparing NSP county specific guidelines to implement the NSP at lower levels.

#### **2.2.2 Sessional Paper No. 01 of 2017 on National Land Use Policy**

The policy was formulated to address the various challenges related to land use and ensure efficient, productive and sustainable use of land. The main goal of the policy is to provide legal, administrative, institutional and technological framework for optimal utilization and productivity of land related resources in a sustainable and desirable manner at national, County and community levels.

The policy recommends the preparation of a National Spatial Plan to provide an integrated framework for the development of the country including guidelines for sustainable rural and urban planning management. The policy also provides for the preparation of planning guidelines, policies and standards to be observed by County Governments and other sectoral agencies within the frameworks of approved physical and land use development

plans. These guidelines have been prepared on this basis and they are to be observed by counties in the implementation of the National Spatial Plan.

## **2.3 Legal context**

Various Acts of Parliament are in place to provide the legal framework for the implementation of the mandate provided for in Article 66 of the Constitution. The Physical and Land Use Planning Act, 2019, The Urban Areas and Cities (Amendment) Act, 2019, County Governments Act No. 17 of 2012, The Land Act No. 6 of 2012, National Land Commission Act No. 5 of 2012 among others. The NSP County specific guidelines are prepared in this context and meet this criterion.

### **2.3.1 The Physical and Land Use Planning Act No. 13 of 2019**

This is the overarching statute that provides for formulation of both National and County physical and land use planning policies, guidelines and standards. The Act further provides for administration, types, content, process and approval of the various types of Physical and Land Use Development Plans.

### **2.3.2 County Governments Act, 2012**

This statute mandates County Governments to carry out the planning function at the county level. The guidelines support preparation of the various county level plans that meet the recommended quality and standards.

### **2.3.3 Urban Areas and Cities (Amendment) Act, 2019**

The statute provides for classification of urban areas and cities, their governance and management, and for integrated development planning. The guidelines are a basis for preparation of these lower-level plans.

### **2.3.4 Environmental Management and Coordination (Amendment) Act, 2015**

The Act provides for the establishment of an appropriate legal and institutional framework for the management of the environment as well as guidelines relating to environmental management and prevention or abatement of environmental degradation. The guidelines take cognizance of this Act and will be implemented within the framework

### **2.3.5 National Land Commission Act, 2012**

The Act mandates the National Land Commission with the management and administration of public land on behalf of the National and County Governments and to

monitor and oversight physical and lands use planning in the country. The guidelines fall within the ambit of this statute and will facilitate their oversight responsibilities.

## 2.4 Planning Context

### 2.4.1 National Spatial Plan (NSP)

The National Spatial Plan (NSP) covers the whole country encompassing the exclusive economic zone. The NSP outlines policies and strategies geared towards influencing desired future distribution and organization of human activity outlined in Vision 2030 and sectoral policies and plans. It aims at achieving economic efficiency and balanced development. The various County Spatial Plans should be aligned to the policies outlined in the NSP as demonstrated in Figure 2 below.

**Figure 2: Policy Focus of the NSP**



**Source: National Spatial Plan, 2015-2045**

To actualize the NSP, a comprehensive implementation strategy has been proposed that embraces a multiplicity of actors including National Government Ministries, Departments and Agencies, County Governments and the National Land Commission. The strategy proposes the establishment of the following institutions as key in the implementation of the Plan; The National Physical Planning Council, the National Technical Committee and the County Physical Planning Committee.

### **2.4.2 NSP linkage to other plans**

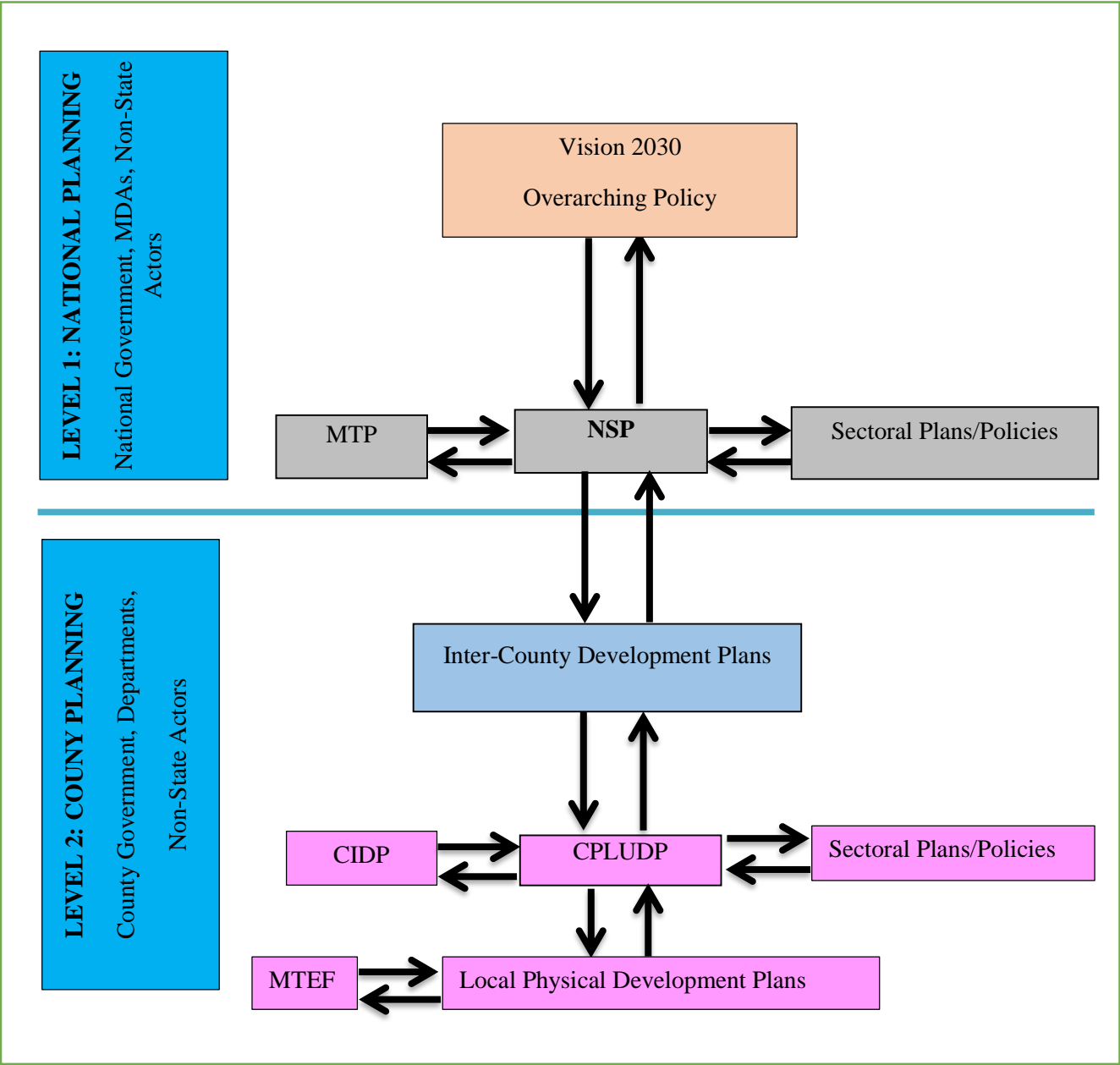
The linkage of the National Spatial Plan (NSP) to county and other lower-level plans is key to realization of its aspirations and the successful actualization of these plans. The NSP provides a spatial framework to ground the Vision 2030 flagships projects and form a basis for coordination of County policies, strategies, measures and plans.

Inter County and County plans take into considerations the policies, measures and strategies of the NSP and implements them actualizing its aspirations.

County Physical and Land Use Development Plans provide a framework where the CIDP draws its programs and projects. The implementation of the CIDP in turn leads to realization of the objectives of the County Physical and Land Use Development Plan.

DRAFT

**Figure 3: NSP Linkage to other Plans**



Source: *The National Spatial Plan, 2015-2045*

### **3 County Profile**

This chapter describes the county including the location, bio-physical characteristics, socio-economic background, physical infrastructure and utilities and the county's comparative advantage.

#### **3.1 Locational Context**

Kirinyaga County is located between latitudes 001' and 00 40' South and longitudes 37° and 38° East. The county borders Nyeri County to the North West, Murang'a County to the West and Embu County to the East and South and also boarder small part of Machakos County. It covers an area of 1,478.1 square kilometers. The map below shows the location of Kirinyaga County in the National Context.





### **3.2 Bio-Physical Context**

**Topography:** The county lies between 1,158 meters and 5,380 meters above sea level and slopes from North to South with the peak of Mt Kenya in the North being the highest point.

**Water resources:** The county has six major rivers namely; Sagana, Nyamindi, Rupingazi, Thiba, Rwamuthambi and Ragati, all of which drain into the Tana River. Other water sources in the country include 29 unprotected springs, 12 water pans, 3 dams, and 208 shallow wells.

**Forests:** The County has 7 forests of which 5 are gazetted.

**Rainfall:** The County has two rainy seasons, the long rains which average 2,146 mm and occur between the months of March to May and the short rains which average 1,212 mm and occur between the months of October to November.

**Temperature:** The temperature ranges from a mean of 8.1°C in the upper zones to 30.3°C in the lower zones during the hot season

#### **Land and Land Use Patterns**

Agriculture is the main land use in Kirinyaga County. Other land uses include residential, educational, public purpose, public utilities, transportation, industrial, recreation and conservation and commercial. The mean land holding size of 0.0958 ha/HouseHold. In the lower regions of the county which comprise Mwea Constituency, the average land holdings are larger while they are smaller in the central and upper regions of Gichugu, Ndia and Kirinyaga Central Constituencies

### **3.3 Socio-economic Background**

#### **Demography**

Kirinyaga County had a population of 610,411 persons according to the 2019 Population and Housing Census. The County has a male: female ratio of 49:51 i.e. 302,011 male and 308,369 females respectively. The County has an urban population of 136,224, which is 22% of the entire population. The county has a population growth rate of 1.5% and the population is projected to reach 898,914 by 2045, the end of the NSP plan period. Further population projections are indicated in the table below.

Table 1 :Population Projection Summary

Year	2019		2020		2025		2030		2035		2040		2045	
<b>Popula tion size</b>	610,380		619,536		667,416		718,997		774,564		834,426		898,914	
	<b>M</b>	<b>F</b>	<b>M</b>	<b>F</b>	<b>M</b>	<b>F</b>	<b>M</b>	<b>F</b>	<b>M</b>	<b>F</b>	<b>M</b>	<b>F</b>	<b>M</b>	<b>F</b>
	302 011	308 369	303 572	315 963	327 033	340 382	352 308	366 688	379 536	395 027	408 868	425 557	440 467	458 446
<b>House holds</b>	316,179		206,512		222,472		239,665		258,188		278,142		299,638	
<b>Area(S q km)</b>	1,478.10													
<b>Densit y</b>	413		419		451		486		524		564		608	

Source; KNBS Census report ,2019

### Main Economic Activities

Agriculture is the most important activity in the county with 87 percent of the total population deriving their livelihood from the sector and accounting for 72 percent of household income. Main crops grown include rice, coffee, bananas, tomatoes, beans, mangoes, maize and other horticultural crops.

The main livestock bred in the county include poultry, dairy cattle, and zebu cattle mainly consisting of bulls which are used for tiling, goats, sheep, rabbits and bees. Aquaculture has recently emerged as a major agricultural activity in the county with a total of 1,281 fishponds spread throughout the county.

### Physical Infrastructure

The existing infrastructure in the Kirinyaga County includes road network, airstrips, energy access, information and communication technologies such as the post offices, mobile telephone connections, landline telephones, fibre optic cables, radio and television

Road transport is the pre dominant transport mode in the county. Some roads which traverse the county include Makutano – Embu road, Kutus – Karatina road, Baricho road, Kiburu road, Kutus – Sagana road, Kutus – Kianyaga road and Kabare – Kimunye road.

### **Public Utilities**

To achieve a spatial and balanced regional development and meet demands of a growing population, there is need to develop and enhance economic infrastructure such as water services and waste management to provide the foundation for economic development.

DRAFT

### **3.4 Kirinyaga County Comparative Advantage**

#### **Natural resources**

Kirinyaga County is well endowed with natural resources including 6 permanent rivers which provide water for domestic, industrial and irrigation uses. In addition, the county also has 7 forests covering a total area of 35,876.68 Ha which accounts for about 24% of the total county land mass. In addition, the County also has several minerals namely stone, ballast, sand, and marram.

#### **Agricultural Potential**

Kirinyaga County receives high rainfall ranging between 2,146 mm and 1,212 mm. The high rainfall supports rain fed agriculture especially in the highlands and midlands areas of the county. The permanent rivers in the county support irrigation farming mainly in Mwea Subcounty and some parts of Kirinyaga Central and Kirinyaga West. In addition, the soils in the county are fertile and favorable for agriculture.

#### **Tourism and filming potential**

Kirinyaga County has a variety of tourist attractions including Mt Kenya Forest, Mt Kenya National Park, Sagana water rafting, numerous waterfalls, Daraja ya Mungu and several heritage and cultural sites. These sites give the county potential for cultural, safari, eco-tourism and sports and leisure activities.

#### **Renewable energy potential**

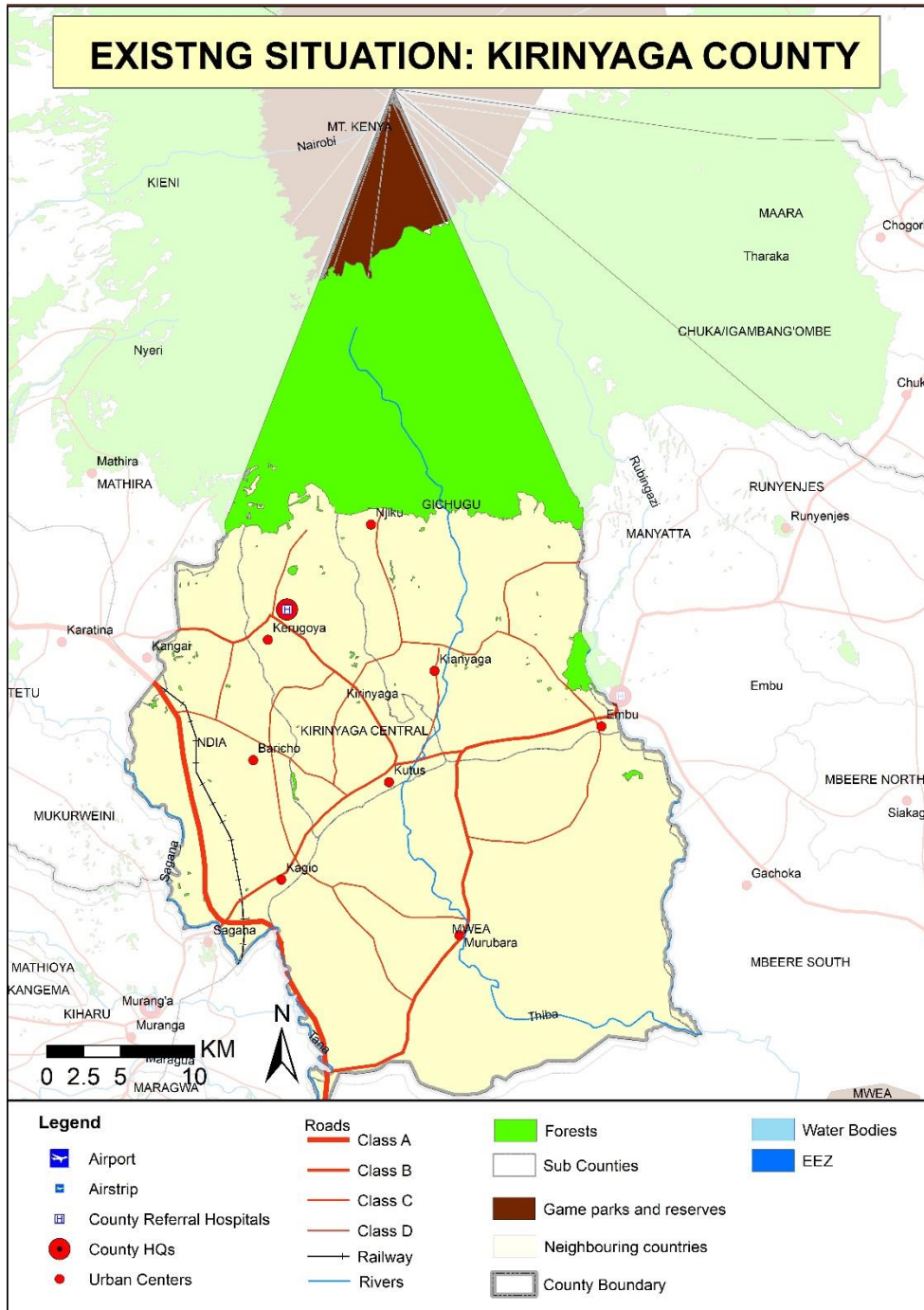
Kirinyaga County has a high potential for renewable energy generation including solar, wind, hydroelectric (River Sagana) and biogas.

#### **Availability of water**

The County has potential for water harvesting from rain, permanent rivers and ground water sources for Industrial and domestic use, irrigation, fishing, leisure and sports.

The map below presents the existing situation in Kirinyaga County

Map 2: Kirinyaga County Existing Situation



Source; State Department for Physical Planning, 2022

## **4 County Specific Issues, Development Strategies and Policy Guidelines**

### **4.1 Kirinyaga County Development Strategies**

The National Spatial Plan provides strategies for spatial growth and development across the country. The strategies are aimed at providing a spatial expression to Kenya Vision 2030 and other sector policies. Kirinyaga County is classified as a highland with a high potential for rain-fed agriculture.

This section seeks to provide strategies for spatial growth and development of the county by addressing the factors that prevent the county from achieving the intended goals and objectives. The development strategies discussed are aimed at managing the global impacts, optimizing use of natural resources, creating a county balance and transforming rural areas. Specifically, the development strategies have been proposed to address the following aspects of the county's development agenda;

- Enhancing national competitiveness
- Optimal use of land and other resources
- Balanced county development
- Rural development in the county
- Urbanization

The following are detailed NSP sector-specific issues and strategies that apply to Kirinyaga County.

## Strategy 1: Optimizing the Use of land and natural resources

Table 2: Strategies for Kirinyaga County

<b>Agriculture( Agro-Climatic Zone II)</b>		
<b>Potentials</b>	<b>Constraints</b>	<b>Strategies</b>
<p><b>Crop farming</b></p> <ul style="list-style-type: none"> <li>• Rich fertile and volcanic soils</li> <li>• High Irrigation potential</li> <li>• Favorable climatic conditions</li> <li>• Availability of a large labor</li> <li>• Presence of cooperatives and other marketing organizations</li> <li>• Readily available market for agricultural produce</li> <li>• Road network connectivity</li> </ul>	<ul style="list-style-type: none"> <li>• Uneconomical fragmentation of land parcels due to human settlements;</li> <li>• Inadequate agricultural support infrastructure</li> <li>• Use of inappropriate farm inputs and technology;</li> </ul>	<ul style="list-style-type: none"> <li>• Regulation of the expansion of urban areas and fragmentation of agricultural land</li> <li>• Urban growth should be diverted to the less agriculturally potential areas of the county</li> <li>• Transportation infrastructure in agricultural areas should be improved</li> <li>• Agricultural support infrastructure should be provided to match the function</li> <li>• Adopt modern methods and practices as well as technology in the whole range of agricultural capabilities that the county has.</li> </ul>
<p><b>Livestock farming</b></p> <ul style="list-style-type: none"> <li>• Adequate water and pasture</li> <li>• Readily available market</li> <li>• Operational cooperative societies</li> <li>• Availability of cheap labor</li> </ul>	<ul style="list-style-type: none"> <li>• Low level of value addition</li> <li>• Poor agricultural support infrastructure</li> <li>• Effects of climate change (insufficient rainfall especially in the Eastern sides of Mwea)</li> </ul>	<ul style="list-style-type: none"> <li>• Development of agro-based industries for value addition</li> <li>• Increase access to agricultural extension services</li> <li>• Mainstream climate change mitigation measure</li> </ul>

<p><b>Aquaculture</b></p> <ul style="list-style-type: none"> <li>• Potential for aquaculture</li> <li>• Presence of permanent rivers and ponds (River Tana)</li> <li>• High demand for fish</li> </ul>	<ul style="list-style-type: none"> <li>• Lack of requisite equipment and technology to tap fishing potential</li> <li>• Pollution of water bodies and unsustainable over-abstraction of water from the water bodies</li> </ul>	<ul style="list-style-type: none"> <li>• Provide subsidies on fishing equipment and undertake research on best fishing practices</li> <li>• Enforce existing regulations on water pollution and regulate the abstraction of water</li> <li>• Map, gazette and protect all important rivers and fishing areas</li> </ul>
<p><b>Environmental Conservation</b></p>		
<p>Presence of;</p> <ul style="list-style-type: none"> <li>• Water towers</li> <li>• Natural forests including Mt Kenya ,Njukiini, Kariaini among others</li> <li>• Highlands</li> <li>• Wetlands</li> <li>• Parks and mountains</li> </ul>	<ul style="list-style-type: none"> <li>• Destruction of water catchment areas and underground aquifers</li> <li>• Deforestation</li> <li>• Erosion</li> <li>• Encroachment by human settlement and activities</li> <li>• Over abstraction of streams</li> <li>• Drying up of water sources</li> </ul>	<ul style="list-style-type: none"> <li>• Promote reforestation, afforestation and agro-forestry</li> <li>• Implement the 10% tree coverage policy</li> <li>• Promotion of soil conservation measures</li> <li>• Prohibition of development in environmentally fragile areas except for the purpose of eco-tourism and research</li> <li>• Control water abstraction</li> </ul>
<p><b>Natural Resources</b></p>		

<ul style="list-style-type: none"> <li>• Untapped potential for green energy including:</li> <li>• Wind;</li> <li>• Hydro(River Sagana, and;</li> <li>• Solar(Mwea)</li> <li>• Presence of springs, aquifers and wells (underground water)</li> </ul>	<ul style="list-style-type: none"> <li>• Inadequate technology for exploitation of green energy and underground water</li> <li>• High cost of exploiting available natural resources</li> <li>• Uncoordinated and unsustainable exploitation of underground water</li> </ul>	<ul style="list-style-type: none"> <li>• Invest in appropriate technology and infrastructure for the exploration of green energy</li> <li>• Undertake further exploration of the available natural resources.</li> <li>• Diversify energy production sources to reduce costs of production and enhance its reliability</li> <li>• Regulate exploitation of underground water</li> </ul>
<b>Industrialization</b>		
<p>High Potential for ;</p> <ul style="list-style-type: none"> <li>• Agro –based industries</li> <li>• Rural-based industries</li> <li>• Cottage industries and craft</li> </ul>	<ul style="list-style-type: none"> <li>• Low adoption of technology</li> <li>• Inadequate transport infrastructure</li> <li>• Low adoption of technology for value addition.</li> <li>• Poor linkage to the markets</li> <li>• Undesignated industrial zones</li> <li>• High cost of energy</li> <li>• Lack of established Value chains</li> <li>• Lack of legal framework to safeguard intellectual property rights</li> </ul>	<ul style="list-style-type: none"> <li>• Provide appropriate technology to enhance value addition</li> <li>• Provide adequate, supportive transport and infrastructure</li> <li>• Promote the formation of cooperatives and Saccos to advance marketing</li> <li>• Plan for dedicated industrial zones</li> <li>• Diversify energy production sources to reduce costs of production and enhance its reliability</li> <li>• Promote assertive marketing campaigns for products both domestically and internationally</li> <li>• Sensitize players in the sector on the aspect of IPR and enforce regulations on the same</li> </ul>

<b>Tourism(Central Highlands and Great Rift Valley Circuit)</b>		
<p>High potential for:</p> <ul style="list-style-type: none"> <li>• Safari Tourism(Mt Kenya National Park)</li> <li>• Eco tourism(Mt Kenya National Park)</li> <li>• Cultural Tourism (Kirinyaga Mass Grave in Kerugoya &amp; Muringa wa Giacai etc.)</li> <li>• Filming</li> <li>• Sport and leisure activities e.g. (Mountain climbing and canoe rafting)</li> </ul>	<ul style="list-style-type: none"> <li>• Poor marketing strategies to promote tourism</li> <li>• Continued over reliance on safari and animal tourism</li> <li>• Encroachment of human activities into touristic attraction sites</li> <li>• Inadequate support infrastructure and facilities</li> <li>• Underdeveloped tourism sites and products</li> <li>• Destruction of wildlife habitat through encroachment and climate change</li> <li>• Human-wildlife conflicts</li> </ul>	<ul style="list-style-type: none"> <li>• Increase the marketing of tourism products in Kirinyaga County</li> <li>• Diversification of the tourism products based on potentials</li> <li>• Promote domestic tourism by providing incentives and subsidies</li> <li>• Restriction of human activities in tourist attraction sites</li> <li>• Provide appropriate tourism support infrastructure and facilities</li> <li>• Opening up under-utilized sites</li> <li>• Conservation of wildlife and forest resources</li> <li>• Preparation wildlife management plans to manage wildlife habitats and population</li> </ul>
<b>Transport</b>		
<ul style="list-style-type: none"> <li>• An established road network with 7 major tarmac roads passing through it namely Makutano – Embu road, Kutus – Karatina road, Baricho road, Kiburu road, Kutus – Sagana road, Kutus – Kianyaga road and Kabare – Kimunye road</li> </ul>	<ul style="list-style-type: none"> <li>• Underdeveloped transport network system</li> <li>• Poor condition of the existing County roads</li> <li>• Lack of Non –Motorized and Intermediate Mode of Transport (NMIMT) infrastructure</li> <li>• Missing transportation links</li> </ul>	<ul style="list-style-type: none"> <li>• Preserve and secure adequate land for future transport and other related development</li> <li>• Improve the condition of all County roads to motorable standards</li> <li>• Encouragement of use green transport</li> </ul>

<ul style="list-style-type: none"> <li>• 5 km of railway line and one railway station located in Ndia Constituency</li> <li>• One airstrip located in Mwea constituency</li> </ul>	<ul style="list-style-type: none"> <li>• Weak enforcement of regulations in bodaboda industry</li> <li>• Encroachment of road reserves</li> <li>• Inadequate or lack of terminal facilities</li> <li>• Poor condition of the existing railway line</li> <li>• Poor condition of most and underutilization of the existing airstrip</li> </ul>	<ul style="list-style-type: none"> <li>• Create linkages to agricultural, tourist and urban areas;</li> <li>• Enforce a regulatory standard requirement for all public transport service operators;</li> <li>• Repossess and revert all illegally acquired land for roads infrastructure;</li> <li>• Formulate regulations and guidelines to control development along transport corridors</li> <li>• Improve and increase terminal facilities</li> <li>• Rehabilitation and upgrading of the railway line</li> <li>• Rehabilitation and upgrading of the existing public airstrips</li> </ul>
<p><b>Public Utilities</b></p>		
<p><b>Water and Sanitation</b></p> <ul style="list-style-type: none"> <li>• Presence of water sources (rivers, springs, boreholes, wells, dams)</li> <li>• High potential for rain water harvesting</li> </ul>	<ul style="list-style-type: none"> <li>• Non-existent sewerage coverage and treatment facilities.</li> <li>• Population increase which exerts pressure on existing water and sewerage facilities</li> <li>• Encroachment of catchment areas</li> <li>• Inadequate water reticulation network</li> <li>• Water pollution</li> <li>• Declining water levels in boreholes, wells and springs due to climate change</li> <li>• Under-exploitation of underground water</li> </ul>	<ul style="list-style-type: none"> <li>• Development of appropriate sanitation infrastructure including collection, disposal and treatment system</li> <li>• Promotion of water harvesting technologies and storage facilities</li> <li>• Protection and rehabilitation of waters sources and catchments areas such as water towers and rivers</li> <li>• Development of appropriate water reticulation network to promote equitable water distribution throughout the county</li> </ul>

		<ul style="list-style-type: none"> <li>• Adoption of measures to prevent water pollution</li> <li>• Use of suitable technologies should to exploit potential underground water to increase the total supply of water in the county</li> <li>•</li> </ul>
<p><b>Solid waste management</b></p> <ul style="list-style-type: none"> <li>• Existing solid waste management facilities</li> </ul>	<ul style="list-style-type: none"> <li>• Increased solid waste generation</li> <li>• Inadequate solid wastes management facilities</li> <li>• Inefficient solid waste management</li> </ul>	<ul style="list-style-type: none"> <li>• Provide and upgrade integrated solid waste management facilities</li> <li>• Promote the, Reduce, Reuse, Recycle (3Rs)</li> <li>• Explore other modes of solid waste management such as recycling of waste materials and waste-energy facilities</li> </ul>
<p><b>ICT</b></p> <ul style="list-style-type: none"> <li>• Existing network backbone infrastructure</li> <li>• High demand for ICT services</li> </ul>	<ul style="list-style-type: none"> <li>• Poor access to ICT infrastructure</li> <li>• High cost of ICT equipment</li> <li>• Poor connection, low coverage, un- reliability, high costs and skewed distribution</li> <li>•</li> </ul>	<ul style="list-style-type: none"> <li>• Increase ICT relevant infrastructure</li> <li>• Expansion of the existing network to all urban areas and rural growth centers</li> <li>• Mainstreaming ICT in all sectors to promote service delivery</li> <li>• Improve ICT adoption.</li> </ul>

## Strategy 2: Balanced Regional Development

Strategy 3: Promoting Balanced Intra-County Development		
Opportunities	Constraints	Strategies
<ul style="list-style-type: none"> <li>• Enabling legal and policy framework</li> <li>• Devolution</li> <li>• Resource endowment</li> <li>• High Agricultural potential</li> <li>• Other inherent potentials including green energy generation, irrigation, agro-based industries, tourism and mining</li> </ul>	<ul style="list-style-type: none"> <li>• Inadequate infrastructural facilities and services</li> <li>• Under-exploitation of the natural resource potential</li> <li>• Weak linkages between rural and urban areas.</li> <li>• Skewed regional growth where areas with lower agricultural potential are less developed compared to areas with high potential</li> <li>• Ethicized governance system</li> </ul>	<ul style="list-style-type: none"> <li>• Increase investment in infrastructure and services</li> <li>• Encourage equitable exploitation and sound management of natural resources while ensuring local participation for improved economic development</li> <li>• Establish strong rural -urban linkages</li> <li>• Promote Irrigation activities for improved productivity in quantity and quality of yield</li> <li>• Promote industrialization and value addition through the provision of support infrastructure in the less developed areas as well as strengthening the better developed areas</li> <li>• Promotion of good governance</li> </ul>

<b>Strategy 4: Promoting Rural Development (Better developed region with poverty level below 50%)</b>		
<b>Opportunities</b>	<b>Constraints</b>	<b>Strategies</b>
<ul style="list-style-type: none"> <li>• Endowment of resources e.g. agriculture, tourism, large scale livestock production and urbanization)</li> <li>• Enabling policy framework to support rural development e.g. NLUP</li> <li>• Transitional area with poverty levels below 50%</li> <li>• Human resource (both skilled and unskilled)</li> <li>• Existing physical and social infrastructure (roads, power, piped water, health facilities, schools, administrative centers)</li> <li>• Availability of markets</li> <li>• Devolution</li> </ul>	<ul style="list-style-type: none"> <li>• Weak rural-urban linkages</li> <li>• Insufficient and dilapidated infrastructure facilities and services</li> <li>• Poor transport and connectivity</li> <li>• Under exploitation of resources</li> <li>• Slow adoption of technology</li> <li>• Low productivity</li> <li>• Land fragmentation</li> </ul>	<ul style="list-style-type: none"> <li>• Develop appropriate transport and infrastructural facilities and services to support the exploitation of the natural resources in the county as well as the opportunities they present to spur economic development</li> <li>• Provide a spatial framework for harnessing natural wealth e.g. renewable energy, from both solar and wind</li> <li>• Promote rural industrialization which includes, rural tourism, mining and agro-based industries</li> <li>• Adoption of modern technology</li> <li>• Promotion of irrigation activities for improved productivity in quantity and quality of yield within the low potential areas</li> <li>• Promotion of sustainable land uses and discouraging land subdivision</li> <li>• Promote urban containment to reduce effects of urban sprawl into rich agricultural areas as well as encouraging eco-villages in the rural areas</li> </ul>
<b>Strategy 5: Urbanization</b>		
<b>Opportunities</b>	<b>Constraints</b>	<b>Strategies</b>
<ul style="list-style-type: none"> <li>• Existing and proposed infrastructural developments</li> <li>• Devolution</li> <li>• An enabling policy framework</li> </ul>	<ul style="list-style-type: none"> <li>• Ribbon development</li> <li>• Inefficient solid waste management services</li> <li>• High rate of urbanization</li> </ul>	<ul style="list-style-type: none"> <li>• Create an enabling environment for commercial and industrial developers to activate potential development within the urban areas</li> <li>• Promote best solid waste management practices</li> </ul>

<ul style="list-style-type: none"> <li>• Human resource (both skilled and unskilled)</li> </ul>	<ul style="list-style-type: none"> <li>• Weak and uncoordinated development control and enforcement systems</li> <li>• Weak rural-urban linkages</li> <li>• Lack of Role Specialization of urban centers</li> <li>• Land and governance issues.</li> </ul>	<ul style="list-style-type: none"> <li>• Provide alternative areas for development of urban centers by provision of services and infrastructure closer to the rural areas</li> <li>• Enforce, harmonize and regularly review the existing legislative and regulatory instruments</li> <li>• Strengthen urban-rural linkages through provision of integrated transportation and communication system to reduce the rate of urbanization and improve the rural economy</li> <li>• Promote the development of centers as per their potential and population as local, market, rural, urban centers and growth centers</li> <li>• Strengthen existing land management institutions</li> </ul>
---	--	---

Source: NSP, 2015

DRAFT

## **4.2 Spatial Policy Guidelines**

The National Spatial Plan has stipulated policies to provide a foundation upon which to anchor the strategies enumerated therein. The primary aim is to inculcate discipline in the use of land and natural resources of the country thus stemming duplication and wastage of the resources.

This section seeks to provide the spatial policy guidelines and measures aimed at promoting the achievements of the objectives of the National Spatial Plan using its guidelines. They aim at enhancing global competitiveness and economic efficiency, optimizing the use of land and natural resources, promoting the regional balanced development and conservation of the environment. These policies are supported by a wide range of measures which spell out the specific actions to be undertaken to actualize the policy intentions. The policies shall ensure that the county is globally competitive as an investment especially in emerging sectors such as the ICT. The policies shall also be implemented by the county government's agencies responsible for planning and development control as well as the authorities responsible for land administration.

The following are the policies and measures specific to Kirinyaga County;

DRAFT

Table 3: Policy Guidelines for Kirinyaga

S.No	Thematic Area	Policy Guidelines	Measures
1	<p><b>Resource Potential Growth regions</b></p> <p><b>Region 1: High Potential Rain Fed Agricultural zone</b></p>	<p>Kirinyaga county shall be developed based on its rain-fed agricultural potential, irrigated agriculture and livestock production potential</p>	<ul style="list-style-type: none"> <li>• Infrastructure provision to support value addition initiatives and human settlement</li> <li>• Small and medium urban centres development</li> <li>• Conservation of water towers and resources</li> <li>• Rural development through provision of infrastructure, agricultural sector development and related economic activities</li> <li>• Environmental protection and Conservation of wildlife and forest resources</li> <li>• Enhanced agricultural and food production</li> <li>• Investment in physical and social infrastructure</li> </ul>
2	<p><b>National Spatial Structure</b></p>	<p>The National Spatial Plan shall be the basis for the preparation of lower tier development plans to achieve integrated and sustainable land use planning and to promote harmony and mutual cooperation in planning in Kenya</p>	<ul style="list-style-type: none"> <li>• All Intercounty, County and Local physical development plans shall be guided by the objectives and policies of the NSP</li> </ul>
3	<p><b>Enhancing National Competitiveness</b></p>	<p>The major urban areas in the County shall be planned and provided with appropriate infrastructure to enhance efficiency and quality of life</p>	<ul style="list-style-type: none"> <li>• Prioritize preparation of Spatial Development Plans</li> <li>• Provide appropriate trunk infrastructure and</li> <li>• Improve the road infrastructure by providing for modal split, linkages and interchanges</li> <li>• Enhance the Livability Index for urban areas by providing quality social and physical infrastructure</li> </ul>

		The selective concentration concept shall be adopted for the planning and location of urban based economic activities in the county to leverage on national competitiveness	<ul style="list-style-type: none"> <li>• Concentrate urban based economic activities in selected urban areas</li> </ul>
		Land and natural resources of the less developed areas shall be utilized optimally and sustainably	<ul style="list-style-type: none"> <li>• Encourage the modernization of agriculture including value addition</li> <li>• Explore and exploit the mineral, energy and water potentials of the county</li> </ul>
		The efficiency of the transportation network shall be enhanced to take advantage of the strategic location and position of the county	<ul style="list-style-type: none"> <li>• Enhance the transport network coverage and connectivity to cover the whole county</li> </ul>
		Enhanced cooperation in spatial and economic planning with neighboring counties and regional blocs such as the Mount Kenya and Aberdares Regional Bloc.	<ul style="list-style-type: none"> <li>• The planning of inter-county resources, transport corridors and infrastructure as well as border urban areas shall be undertaken jointly</li> </ul>
<b>4</b>	<b>Modernizing Agriculture (Agro-climatic zone II)</b>	Kirinyaga County which is in Agro-climatic zone II shall be safeguarded against the threat of urbanization and land subdivision	<ul style="list-style-type: none"> <li>• Protection of high potential agricultural land through preparation and implementation of urban spatial development plans and setting urban growth limits</li> <li>• Subdivision of land shall be strictly regulated</li> </ul>
		The irrigation potential of the country shall be	<ul style="list-style-type: none"> <li>• Rehabilitate and expand existing irrigation schemes</li> </ul>

		<p>optimized by promoting investment in irrigation agriculture for high value crops</p>	<ul style="list-style-type: none"> <li>• Encourage small holder irrigation schemes through sensitization campaigns and reducing the cost of irrigation equipment</li> </ul>
		<p>The use of land in high agricultural potential areas shall be intensified to increase productivity</p>	<ul style="list-style-type: none"> <li>• Adoption of technology and modern agricultural production methods and practices</li> <li>• Provide appropriate infrastructure to support the exploitation of the high potential areas</li> </ul>
		<p>The fishing potential of the county shall be optimized to increase the food stock and export earnings</p>	<ul style="list-style-type: none"> <li>• Encourage small holder farmers to establish fish farms in areas with potential throughout the county</li> <li>• Provide appropriate infrastructure to support the fishing industry</li> <li>• Increase access to fishing equipment by making them affordable through reduced taxation</li> </ul>
5.	<p><b>Diversifying Tourism</b> (Central and Great Rift Valley Circuit)</p>	<ul style="list-style-type: none"> <li>• The county shall promote diversification of tourism by promoting the diverse products available in the county as well as adding more where possible.</li> <li>• Appropriate Tourism support infrastructure and facilities shall be provided</li> <li>• Tourist attraction areas and sites shall be conserved and protected</li> <li>• Governance of the tourism sector shall be enhanced</li> <li>• Spatial Development plans shall be prepared to guide implementation of the flagship projects the tourism sector</li> </ul>	<ul style="list-style-type: none"> <li>• The sector shall be developed to offer; eco-tourism, sport tourism, cultural tourism, adventure tourism, cultural and heritage, agro tourism, safari and wildlife, and filming High yield tourism segment through development of international-branded facilities</li> <li>• Improve infrastructure that supports tourism</li> <li>• Prepare a county tourism development master plan which should focus on tourism sites zoning, product development and quality standard of tourism services.</li> <li>• Strictly regulate developments within the tourist attraction sites.</li> <li>• Prepare integrated spatial plans to guide development of the tourism sector</li> <li>• Undertake research to identify more tourist attraction areas and sites,</li> </ul>

6.	<p><b>Managing Human Settlements</b></p>	<p>The expected increase in population in urban areas shall be anticipated and accommodated particularly for the main growth areas i.e (Kerugoya, Sagana)</p> <p>Alternative urban areas shall be developed and supported to promote balanced regional development and spur growth</p> <p>Rural growth centres shall be rationalized and supported to act as central places and settlements clustered to free the rich agricultural land</p> <p>Human settlements shall be developed in line with environmental and natural resources conservation to improve living conditions</p> <p>NSP advocates for the provision of an efficient, reliable and effective transport system for human settlements</p>	<ul style="list-style-type: none"> <li>• Increase the housing stock by planning and redeveloping existing housing areas</li> <li>• Plan and designate land for new housing schemes</li> <li>• Upgrade the existing and provide additional infrastructure and facilities to support housing development in the urban areas</li> <li>• Develop principal towns as alternatives to the main growth centers</li> <li>• Develop urban centres as intermediate centres between the rural and the principal towns</li> <li>• Provide principal towns and urban centres with the requisite infrastructure to support their growth and development</li> <li>• Promote sectors such as agriculture that have potential to stimulate rural development</li> <li>• Provide basic services such as extension services, health facilities, markets, sanitation, water, power and education to improve the quality of rural life</li> <li>• Map out and prohibit development in environmental sensitive areas</li> </ul>
----	--	---	---

		<p>The management and governance of Human Settlements particularly the urban areas shall be improved</p> <p>NSP shall advocate for upgrading of the existing settlements and forestalling of new informal settlements</p> <p>Peri-urban development shall be managed and controlled to contain urban growth within its limits and protect rural land uses</p>	<ul style="list-style-type: none"> <li>• Integrate land use and transportation planning to encourage development patterns which reduce transport demands</li> <li>• Build institutional capacities of the urban areas management boards</li> <li>• Prepare Local Physical Development Plans for purpose of renewal and/or redevelopment of the informal settlements</li> <li>• Formulate and implement planning legislation on peri urban planning and management</li> </ul>
6.	<b>Conserving the natural environment</b>	<p>All environmentally sensitive areas(wetlands, forests and mountain ecosystems) within the county shall be protected and utilized in a sustainable manner</p> <p>All government agencies shall integrate environmental concerns in policy formulation, resource planning and development processes</p> <p>Community participation shall be mainstreamed in the</p>	<ul style="list-style-type: none"> <li>• Prepare integrated wetland resource management plans to promote sustainable use of freshwater and wetland resources</li> <li>• Prepare integrated forest resource management plans to promote sustainable use of forest resources</li> <li>• Develop and implement a county strategy for rehabilitation and restoration of degraded natural and indigenous forests and protect water catchment areas with active community</li> <li>• The County Government of Kirinyaga to promote a forestation and agro-forestry through County Spatial Plans</li> <li>• Develop and implement strategies and action plans for sustainable management of mountain ecosystems</li> <li>• Promote integrated watershed management and alternative livelihood opportunities to enhance community</li> </ul>

		<p>protection and conservation of natural resources</p> <p>The County Physical Planning department shall mainstream climate change into their planning processes</p>	<p>participation and empowerment in the conservation and management</p> <ul style="list-style-type: none"> <li>• Implementation of the National Climate Change Strategy and the National Climate Change Action plan</li> <li>• Sensitize communities living around the natural resources on the need for conservation of their sources</li> <li>• Develop mechanisms for sharing benefits accruing from the natural resources by the conservation agencies in consultation with the local communities</li> <li>• The County Planning Department shall build and strengthen research capacity on climate change and related environmental issues</li> </ul>
<b>5</b>	<b>Rapidly Industrializing County</b>	<p>The cluster development strategy shall be promoted to focus on proximity to raw materials and markets of region specific products</p>	<ul style="list-style-type: none"> <li>• Locate agro-based industries, mineral-based and cottage industries in-situ</li> <li>• Promote value addition in processing of local produce</li> </ul>
		<p>Specific sites for industrial development shall be identified, planned and serviced with the appropriate infrastructure</p>	<ul style="list-style-type: none"> <li>• Plan and set aside land for industrial development in every sub- county</li> <li>• Provide an integrated, efficient, reliable and sustainable transport network infrastructure (road, rail and air) to support the industrial zones</li> <li>• Integrate the industrialization process and environment conservation</li> <li>• Increase availability of clean water and improve sanitation</li> <li>• Encourage adoption and utilization of ICT in the county in order to enhance the county's transformation towards an advanced Information Society</li> </ul>
		<p>Adequate and affordable energy supply for the industrial sector shall be provided</p>	<ul style="list-style-type: none"> <li>• Adopt renewable energy generation programmes by provision of incentives and enforcement of building laws requiring utilization of renewable energy</li> <li>• Incentivize large industries to promote co-generation of power</li> </ul>

			<ul style="list-style-type: none"> <li>Promote the adoption of energy efficient technologies to lower the demand for energy</li> </ul>
<b>6</b>	<b>Diversifying Tourism (Central and Great Rift Valley Tourism Circuit)</b>	<ul style="list-style-type: none"> <li>The NSP shall promote diversification of tourism by offering diverse products in the different tourist circuits</li> <li>Appropriate Tourism support infrastructure and facilities shall be provided</li> <li>Tourist attraction areas and sites shall be conserved and protected</li> </ul> <p>Governance of the tourism sector shall be enhanced.</p>	<ul style="list-style-type: none"> <li>The county shall develop tourism to offer diverse tourism products based on its potential.</li> <li>Improve infrastructure that supports tourism</li> <li>Formulate planning regulations and standards to guide tourist specific infrastructure and facilities.</li> <li>Prepare a county tourism development master plan which should focus on tourism sites zoning, product development and quality standard of tourism services.</li> <li>Strictly regulate developments within the tourist attraction sites.</li> <li>Undertake research to identify more tourist attraction areas and sites</li> </ul>
<b>7</b>	<b>Integrating the Transportation network</b>	<ul style="list-style-type: none"> <li>An integrated and functional transport system for the county and urban areas shall be developed</li> <li>An urban transport policy that facilitates an integrated, balanced and environmentally sound urban transport system in which all modes efficiently play their roles shall be developed</li> <li>Environmental conservation shall be upheld in the planning, development and</li> </ul>	<ul style="list-style-type: none"> <li>Provide access and linkage, between county headquarter and sub-county headquarters and link them to national transportation corridors</li> <li>Adopt transit oriented development in the planning, design and development of all public urban transport</li> <li>Integrate land use with urban transport planning</li> <li>Design and develop integrated transport networks that considers all different modes of transport</li> <li>Establish a comprehensive transport management information system for all transport modes</li> </ul> <p>Develop a public transport policy to regulate planning and management of public transport</p> <ul style="list-style-type: none"> <li>All transport network providers to implement international environmental legislation/ agreements e.g. the Clean Air Initiative resolutions that commit African countries to adopt less polluting fuels</li> </ul>

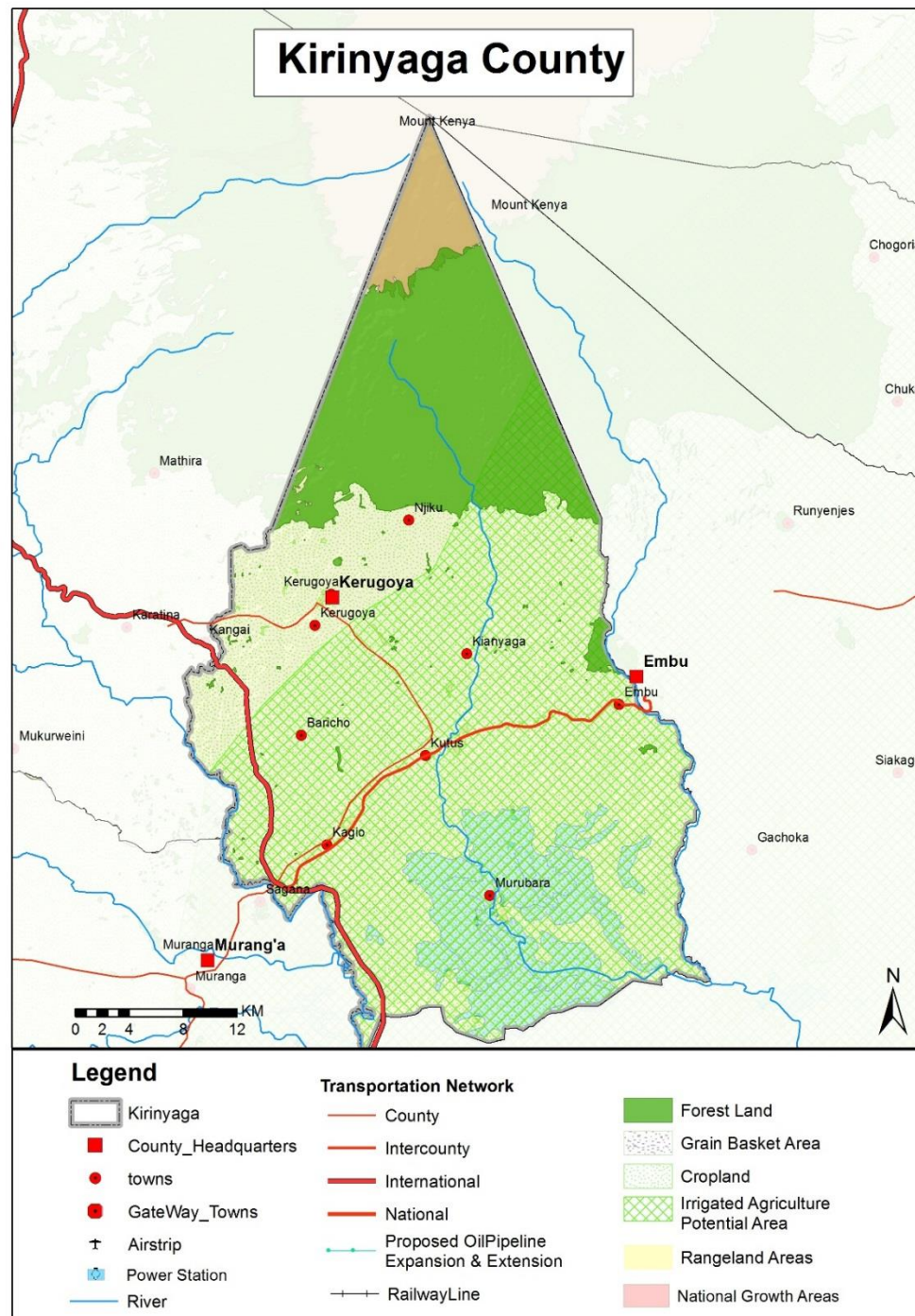
		<p>management of the transportation network</p> <ul style="list-style-type: none"> <li>• An efficient and affordable Mass Public Transport for all urban areas in the country shall be developed</li> </ul>	
8	<b>Providing Appropriate Infrastructure</b>	<ul style="list-style-type: none"> <li>• Safe, adequate, reliable and <b>affordable electricity</b> for both Urban and rural settlements shall be provided.</li> </ul>	<ul style="list-style-type: none"> <li>• Tap into solar for large scale production in Kirinyaga County for sale to the national grid.</li> <li>• Mainstream and enforce green energy options in the design of buildings</li> </ul>
		<ul style="list-style-type: none"> <li>• Expansion and improvement of <b>water reticulation systems</b> to facilitate the access to clean, safe, adequate, reliable and affordable water in human settlements shall be promoted</li> </ul>	<ul style="list-style-type: none"> <li>• Incorporate water provision in all physical development plans</li> <li>• Expand the water supply in Kirinyaga County</li> <li>• Restore all the water towers.</li> <li>• The County Government shall enforce the national rainwater harvesting strategy.</li> <li>• Build water kiosks and yard taps, develop water supply pipeline systems and sewers, and a comprehensive mapping of all water supplies systems in the informal settlements</li> </ul>
		<ul style="list-style-type: none"> <li>• A network of functional, efficient, safe, accessible and sustainable <b>national health referral infrastructure</b> shall be established.</li> </ul>	<ul style="list-style-type: none"> <li>• Increase the utilization of services at lower levels of the health services and reduce self-referral to the higher levels of care;</li> <li>• Develop the service provider's capacity to offer services and appropriately refer at each level of the healthcare system;</li> <li>• Improve the system's ability to transfer clients and specimens between the different levels of the health care system;</li> <li>• Improve reverse referral and feedback information systems</li> </ul>

			<ul style="list-style-type: none"> <li>• Improve preparedness and response to emergencies and disasters</li> <li>• Strengthen outreach systems for provision of health services to marginalized and vulnerable population</li> <li>• Provision of quality emergency health services at the point of need</li> </ul>
		<ul style="list-style-type: none"> <li>• Appropriate, quality, efficient and cost effective <b>ICT infrastructure</b> in both rural and urban areas shall be promoted</li> </ul>	<ul style="list-style-type: none"> <li>• Develop and upgrade ICT Infrastructure in the county</li> <li>• Extend ICT infrastructure to cover all the rural and local growth centres.</li> <li>• Mainstream use of ICT in all levels of government and the private sector (e-government).</li> </ul>
		<ul style="list-style-type: none"> <li>• The expansion of <b>sewerage systems and waste management facilities</b> shall be promoted to improve sanitation in human settlements</li> </ul>	<ul style="list-style-type: none"> <li>• Service all urban settlements by a centralized sewerage treatment system and solid waste disposal facilities</li> <li>• Develop a sanitation system in the County including storm water drains and treatment facilities</li> <li>• All spatial plans to make provision for development of sewer systems and treatment works and solid waste disposal sites</li> <li>• Expansion of urban boundaries to be guided by investment in infrastructural services</li> <li>• Enactment of laws at County levels to incorporate private public partnerships in infrastructure investments</li> <li>• Adopt appropriate technology to facilitate reduction, recycle and reuse of waste (3R's)</li> </ul>
		<ul style="list-style-type: none"> <li>• <b>Sporting infrastructure</b> shall be planned, developed, maintained and the existing rehabilitated to promote sports development.</li> </ul>	<ul style="list-style-type: none"> <li>• Establish County Sports Talent Centers to act as feeds to the international center to scout, nurture and develop sports talents at the sub-national levels.</li> <li>• Rehabilitate all the county stadia to international standards</li> </ul>

Source; NSP, 2015

The map below indicates the proposals for Kirinyaga County as spelt out in the NSP.

Map 3: NSP Proposals



Source: National Spatial Plan, 2015

## **5 Implementation and Adoption of The Guidelines**

### **5.1 Overview**

The implementation framework identifies activities and further ties them with responsible actors, resources and timeframes adequate for their execution. It constitutes a deliberately established method, means or system of ensuring that the policies, strategies and measures outlined in the guidelines are continuously and consistently executed to achieve their objectives.

To effectively implement the guidelines, the various sectors, actors and levels of planning have been identified and have to work together and the mandate of the sectors at the National and County levels of planning have to be integrated.

### **5.2 Implementation Approaches**

The County Specific Guidelines will be implemented through various approaches including:

1. Preparation of spatial plans to integrate and conform to the proposals of the County Guidelines. The plans include:
  - Inter-County Physical and Land Use Development Plans for Metropolitan regions, conservation zones, river basins, water towers, coastal ecosystems, trans-boundary resource areas and transport corridors, among others.
  - County Physical and Land Use Development Plans.
  - Local Physical and Land Use Development plans for Cities, Urban areas, special area plans, subject plans and detailed neighborhood plans, among others.
  - Sectoral plans
2. Integration of the guideline policies, strategies and measures into the County sector plans, programs and projects. Ministries, Departments and Agencies (MDAs), County and National Departments identified in the plan to administer the policies, strategies

and measures are required to translate them into action plans, programmes and projects and to include them in their subsequent sector plans.

3. Formulation of policies, regulations and standards to guide development control

### 5.3 **Implementation Framework**

The implementation of the various policies, strategies, measures, programmes and projects under these Guidelines will involve a wide range of actors. It will require a coordinated approach and partnership between the National and County Governments and non-state actors. It may require re-engineering of institutions and a number of actors to undertake the implementation through a harmonized approach.

The National Spatial Plan identified a multi-leveled framework for implementation of the plan that incorporates all levels of actors. In this regard, the institutions identified in the NSP to undertake implementation of the plan at County-level shall also be mandated to ensure implementation of this Guidelines.

The following are the Institutions mandated to ensure implementation of the County Specific guidelines;

#### **5.3.1 County Physical Planning Committee**

The role of the County Planning Committee shall be to ensure aspirations of the guidelines are articulated in preparation of the County Spatial Plans, County Integrated Development Plans and Local Physical and Land Use Development Plans.

The composition of this committee consists of;

- i. The Governor who will be the Chairperson,
- ii. the Deputy Governor,
- iii. the County Executive Committee Members from various sectors
- iv. Directors from various relevant County Departments including Lands and Physical Planning, Economic planning, Agriculture, Industrialization, Tourism, Environment, Transport and Infrastructure

The functions of the committee include;

- 1) To promote effective integration between physical, economic and sectoral planning within the framework of county development policies.
- 2) To provide policy guidance for the implementation of strategic spatial projects
- 3) To ensure that the guidelines policies and measures are mainstreamed in the various county plans.
- 4) To mobilize resource for implementation of the Guidelines.

### **5.3.2 County Planning Unit (CPU)**

The technical Unit shall provide technical support to the various implementing County departments on issues relating to physical planning.

The CPU shall;

- i. Monitor the Implementation of the guidelines.
- ii. To disseminate components of the guidelines to the various county departments.
- iii. Update the County Physical Planning Committee on a regular basis on the implementation of the guidelines.

The County Director of Physical Planning shall be responsible for preparation of an annual state of planning report which shall among other things appraise the status of implementation of the guidelines.

### **5.3.3 National Land Commission**

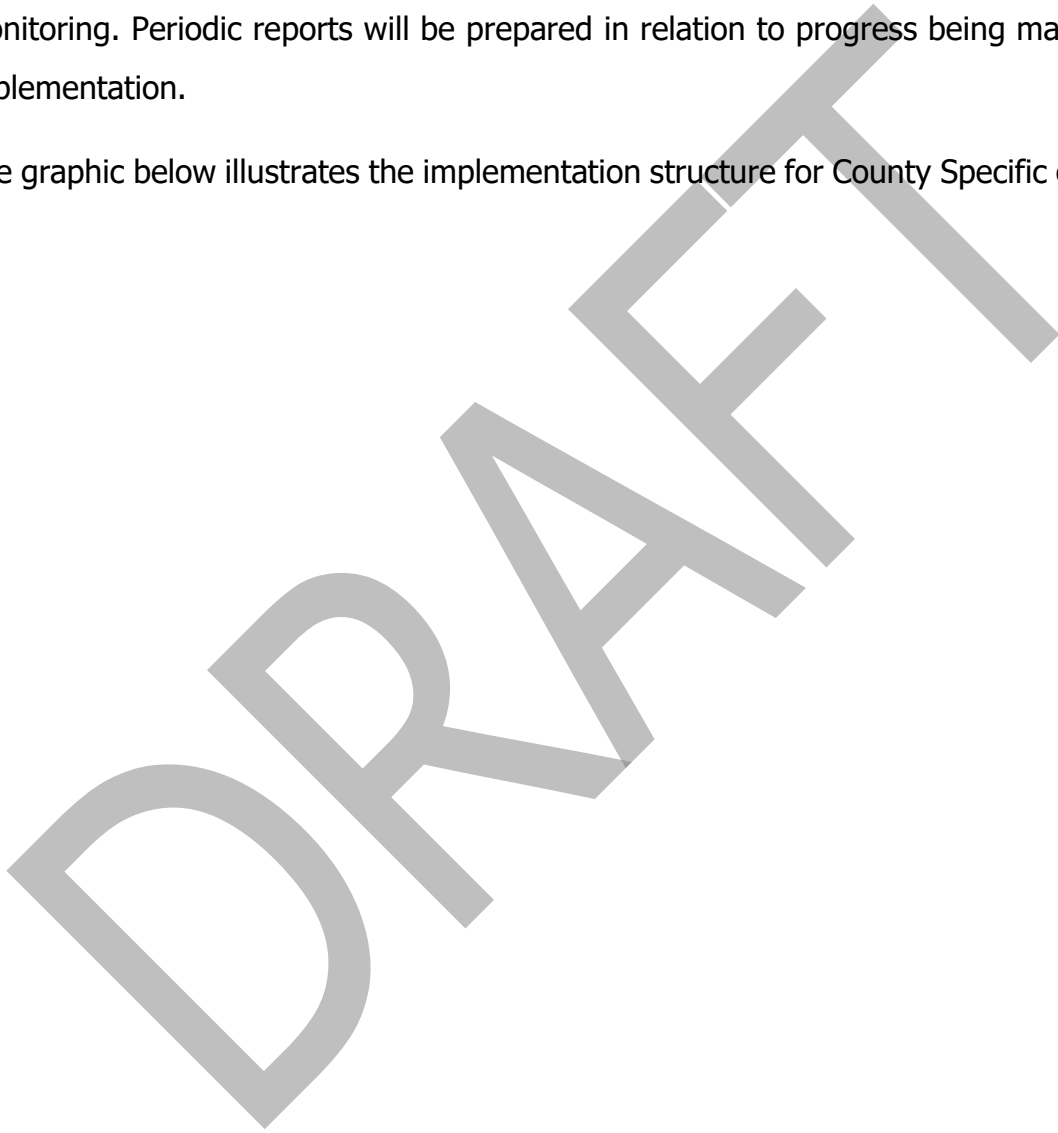
The National Land Commission shall play its oversight role in land use planning to ensure efficient implementation of the NSP and the guidelines. Other functions of the Commission in the implementation of the NSP and the guidelines include the following: - To formulate mechanisms and parameters for monitoring and overseeing land use planning.

- i. To ensure that relevant planning authorities carry out their functions as required by law.
- ii. To make recommendations for improvements of the planning systems in the county.
- iii. To mobilize resources to support physical/land use planning.

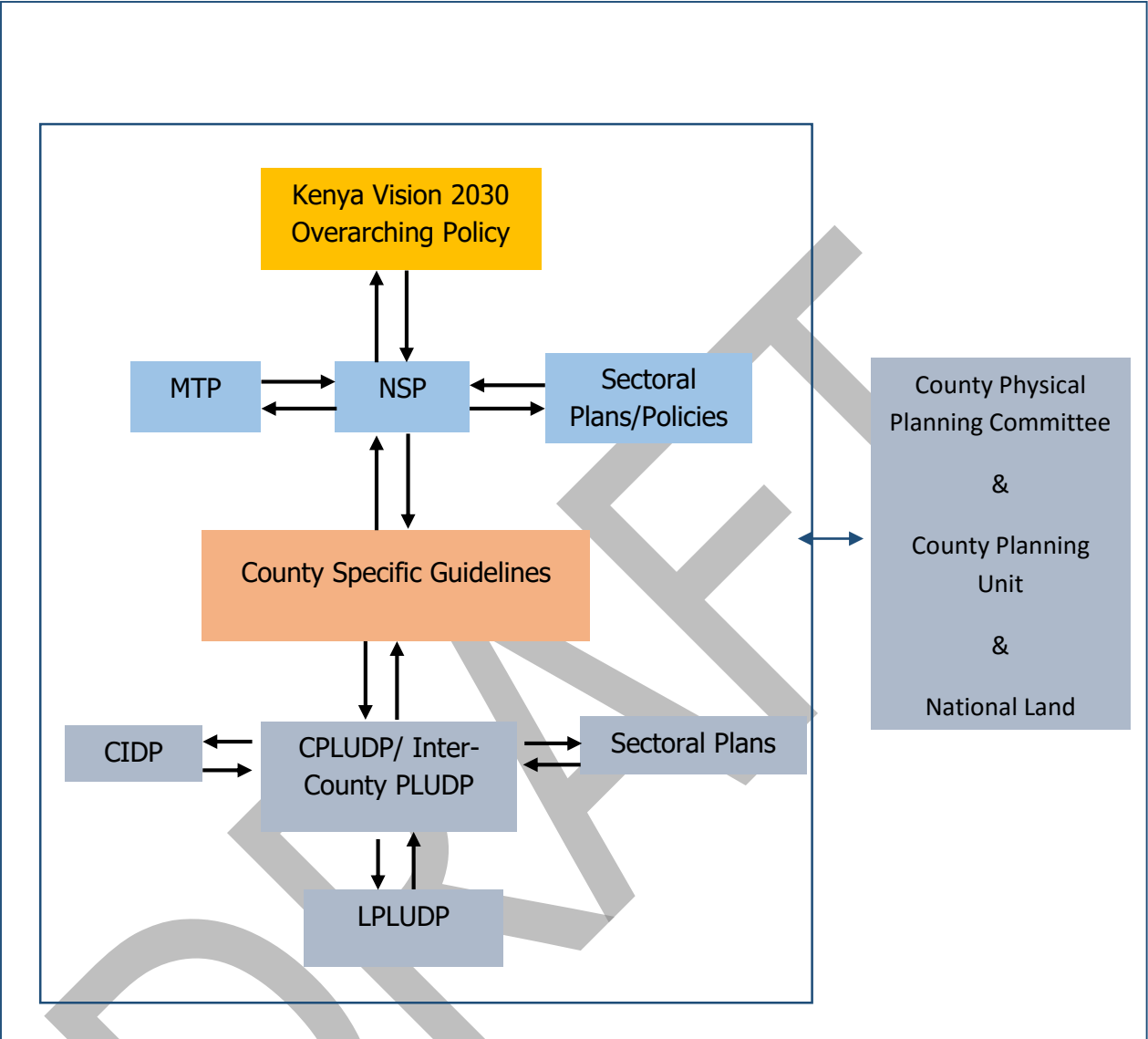
#### 5.4 **Monitoring and Evaluation**

Implementation of the guidelines will be monitored and evaluated to measure both outputs and outcomes and ensure that the intended actions are implemented in a timely manner. To facilitate attainment of the objectives of the guidelines, performance indicators will be developed by the County Physical Planning Department for efficient monitoring. Periodic reports will be prepared in relation to progress being made in their implementation.

The graphic below illustrates the implementation structure for County Specific guidelines.



**Figure 2: Implementation structure of the guidelines**



*Source: State Department for Physical Planning, 2022*

## 5.5 Conclusion

The application of these guidelines will be undertaken by a number of actors and hence the need for a coordinated approach. The lead agency will be Kirinyaga County Government which will be responsible for implementing various county specific initiatives proposed by the guidelines.

The National Government, County Government of Kirinyaga, the private sector and the general public will be critical in actualizing the objectives of these guidelines. The County Physical Planning Committee shall develop a communication strategy to enhance the synergies.

The National Department of Physical Planning shall undertake sensitization, training and capacity building of the County Government and National Government institutions and agencies that will be involved in the implementation of these guidelines. Special attention will be given to the County physical planning units, as they will be expected to provide technical expertise in the implementation of the County specific policies and strategies.

