



NATIONAL SPATIAL PLAN GUIDELINES FOR KISII COUNTY

**Optimal productivity, sustainability, efficiency and equity in
use of our land and territorial space**



JUNE 2022

MINISTRY OF LANDS AND PHYSICAL PLANNING
DEPARTMENT FOR PHYSICAL PLANNING

Foreword

The Constitution of Kenya apportions responsibility of planning to both National and County Governments. Under the Fourth Schedule on distribution of functions, Part 1 (21) and (32) mandates the National Government with the responsibility of formulating general principles of land planning, co-ordination of planning by the Counties, capacity building and technical assistance to the Counties. On the other hand, Part 2(8) allocates the function of County planning and development to County Governments. It is under these provisions that the County specific guidelines have been prepared.

The Department of Physical Planning prepared the National Spatial Plan (NSP) in response to the Kenya Vision 2030 to guide the spatial development of the country over a period of 30 years beginning in 2015.

It aims at achieving an organized, integrated, sustainable and balanced development of the country by providing a framework for better national organization and linkages between different activities within the national space.

To implement the Plan, the Counties are expected to play a key role by mainstreaming strategies, policies, and measures identified in the NSP into the County spatial planning systems.

The guidelines have identified planning policies, strategies, and measures that Plans at the County level are expected to mainstream and propagate. The policies address among others, the protection of rich agricultural land, development imbalances, conservation of environmentally sensitive areas, urban containment, and promotion of industrial development.

The guidelines provide direction on the existing potentials, the opportunities, the constraints/challenges inhibiting harnessing of the potentials, the strategies to apply, respective policies required, and the necessary measures to achieve optimal productivity, sustainability, efficiency and equity in the use of county land resources.

The guidelines are an opportunity on how best to refocus, vary and complement areas that require different approaches responding to country-specific needs and promote the livelihoods of their people, while contributing to the national aspirations of vision 2030, regional objectives of the Africa Agenda 2063, and international targets of sustainable development. The refocusing will also be handy in reviewing and making decisions on NSP which is due for review in 2025.

These guidelines are therefore a tool for enhancing this critical path and provide a direction for development planning by the Counties as they discharge their responsibility of preparing county and local physical and land use development plans. The guidelines will also ensure that the County Integrated Development Plans conform to the proposed County specific policy guidelines and measures.

DRAFT

PREFACE

The National Spatial Plan(NSP) recognizes that Kenya is greatly endowed with massive and diverse resources distributed over the national space that require an integrated and coordinated approach for optimal productivity and sustainability.

The County Specific Guidelines have been derived from the National Spatial Plan and provide a planning framework for the integration of the NSP into the county spatial planning system. They are clear statements linking the National Spatial Plan to Inter-County, County and lower-level Physical and Land Use Development Plans and provide clarification on the anticipated sustainable development outcomes of implementing the Plan.

The County Government will adopt, develop and implement their plans based on the policies, strategies, and measures articulated in the guidelines. The realized county plans are expected to guide, harmonize and facilitate development within the county, hence contributing to the overall implementation of the NSP.

The guidelines also form an efficient compass and monitoring tool for National and County Governments to jointly pursue sustainable planning and appropriate implementation mechanisms.

For the county to be nationally competitive, there is need to balance development and promote optimal utilization of land and land-based resources as well as cultivate an integrated approach in addressing the intertwined challenges of regional imbalances/inequalities, rural development, underutilization of the available resources, uncontrolled urbanization, environmental degradation and inefficient transportation. It is imperative therefore, to prioritize the implementation of this strategic document so as to promote balanced development and competitiveness across the county.

EXECUTIVE SUMMARY

The County Specific Guidelines seek to facilitate the implementation of the National Spatial Plan by outlining policies, strategies and measures to guide County spatial planning and development and promote optimal productivity, sustainability, efficiency and equity in the use of land. They provide a framework for preparation of lower level Plans including Inter-County, County and Local Physical and Land Use Development Plans.

The disconnect between National and County Spatial Planning and development has resulted in uncoordinated and unbalanced development, therefore creating a need for a clear structure that links National, Regional and Local planning and development. This is achievable through integration of the policies, strategies and measures proposed by the guidelines into County Spatial Plans, Programs and Projects, to tackle challenges of unbalanced regional development, urbanization, national competitiveness and unsustainable use of land and natural resources.

The County Specific Guidelines are organized into five chapters detailing various facets. Chapter one provides an overview, purpose and justification of preparation of the guidelines. It also outlines the objectives that the guidelines intend to achieve and details the preparation process as well as intended users. This chapter highlights the key principles that form the basis for preparation of lower level plans including public participation, liveability, sustainable development, urban containment, smart urban growth among others.

Chapter two details the legal and policy provisions that the guidelines are anchored upon. They include, among others, The Constitution of Kenya, 2010, The Physical and Land Use Planning Act No.13 of 2019, County Government Act, 2012, Environmental Management and Coordination (Amendment) Act, 2015, Sessional Paper No. 01 of 2017 on National Land Use Policy and Sessional Paper No. 10 of 2012 on Kenya Vision 2030.

The third chapter analyses the county profile, detailing its location, size, bio-physical characteristics, socioeconomic status and the County's comparative advantage in relation to others. The locational context provides information on the geographical position and bordering Counties while the biophysical context discusses the topography, hydrology and climate. The socioeconomic status indicates key economic drivers of the County and its population and demographic structure.

Chapter four presents the County specific issues and proposes development strategies to promote national competitiveness, optimal use of land and resources, rural development, balanced intra-county development and urbanization. Additionally, it provides policy guidelines and measures for County advancement.

The final chapter five focuses on implementation and adoption of the guidelines. The implementation framework identifies institutions, County development programs and projects, and further ties them with responsible actors, resources and timeframes for effective execution. It proposes a framework for ensuring that the outlined policies, strategies and measures are adequately implemented.

TABLE OF CONTENTS

Foreword.....	ii
PREFACE	iv
EXECUTIVE SUMMARY	v
TABLE OF CONTENTS.....	vii
List of maps	ix
List of Tables	ix
List of figures.....	ix
CHAPTER1: INTRODUCTION.....	10
1.1 Background	10
1.2 Purpose	10
1.3 Objectives of the Guidelines	10
1.4 Scope.....	11
1.5 Justification	12
1.6 Application	13
1.7 Process of Preparing the Guidelines	13
1.8 Targeted users of the Guidelines.....	14
1.9 Key Principles	15
2 CHAPTER 2: LEGAL, POLICY AND PLANNING CONTEXT.....	17
2.1 Constitutional context	17
2.2 Legal framework	17
2.2.1 The Physical and Land Use Planning Act, 2019.....	18
2.2.2 County Governments Act, 2012.....	18
2.2.3 The Urban Areas and Cities Act, 2019.....	18

2.2.4	Environmental Management and Coordination Act, 2015.....	18
2.2.5	National Land Commission Act, 2012	19
2.3	Policy Context	17
2.3.1	The Kenya Vision 2030.....	17
2.3.2	Sessional Paper No. 01 of 2017 on National Land Use Policy.....	17
2.3.3	Sessional Paper No. 3 of 2009 on National Land Policy (NLP)	Error! Bookmark not defined.
2.4	Planning Context.....	19
2.4.1	National Spatial Plan (NSP)	19
2.4.2	NSP linkage to other plans.....	20
3	CHAPTER 3: COUNTY PROFILE.....	22
3.1	Location Context.....	22
3.2	Bio Physical Characteristics.....	24
3.3	Socio-Economic Characteristics	25
3.3.1	Population and Demography	25
3.3.2	Economy.....	26
3.3.3	Physical Infrastructure	26
3.3.4	Public Utilities	26
3.4	The County's Comparative Advantage.....	29
4	CHAPTER 4: COUNTY SPECIFIC ISSUES, DEVELOPMENT STRATEGIES AND POLICY GUIDELINES	30
4.1	County Specific Issues and Strategies	30
4.2	Policy Guidelines and Measures	41
5	CHAPTER 5: IMPLEMENTATION OF THE GUIDELINES	51
5.1	Overview	51
5.2	Implementation Channels.....	51
5.3	Institutional Framework for Implementation.....	53

5.3.1	National Physical Planning Council	53
5.3.2	National Technical Committee.....	53
5.3.3	County Physical Planning Committee	54
5.4	Conclusion.....	57

List of maps

Map 1: Location of Kisii County	23
Map 2: Existing situation in Kisii County	28
Map 3: Proposals in Kisii County.....	50

List of Tables

Table 1: Facets as captured in the NSP.....	Error! Bookmark not defined.
Table 2: Targeted users of the guidelines.....	14
Table 3: Population projection to the year 2045.....	25
Table 4: Sector specific issues and strategies.....	32
Table 5: Policy Guidelines and measures.....	43

List of figures

Figure 1: Policies as outlined in the NSP	19
-------------------------------------------------	----

CHAPTER 1: INTRODUCTION

1.1 Background

The County Guidelines set out policies, strategies and measures that will guide the long-term spatial development of the county for a period of 30 years. They cover the entire county and defines the general trend and direction of its spatial development.

The guidelines have been developed in line with the four thematic areas as outlined in the NSP. They provide a guide to the Planning Authority at the county on how to incorporate the NSP policies, strategies and measures during the preparation of County Spatial Plans and other lower level plans like the Local Physical and Land Use Development Plans consequently implementing the NSP.

The NSP County Specific implementation guidelines summarize the County's existing potentials and opportunities, the constraints (challenges) inhibiting harnessing of the potentials, the applicable strategies and respective policies required, and the necessary measures to achieve optimal productivity, sustainability, efficiency and equity in the use of the county land resources. They act as a reference point

1.2 Purpose

The purpose of the County Specific Guidelines is to provide a planning framework for mainstreaming of the National Spatial Plan to the County spatial planning system.

The guidelines are intended to assist the County enhance the implementation of the NSP by linking the proposed county specific policies, strategies and measures into the County plans, programs and projects while putting measures in place for achieving them. The guidelines inform preparation of various County Physical Plans such as the County Physical and Land Use Development Plans.

For optimal implementation of these plans, a County Integrated Development Plan (CIDP) is essential since it is a sectoral and budgetary based plan that draws its implementation programs and projects from the County Physical Plans.

1.3 Objectives of the Guidelines

The guidelines provide policies, strategies and measures to deal with challenges of regional imbalances/inequalities, rural development, underutilization of the available resources, urbanization, environmental degradation and inefficient transportation.

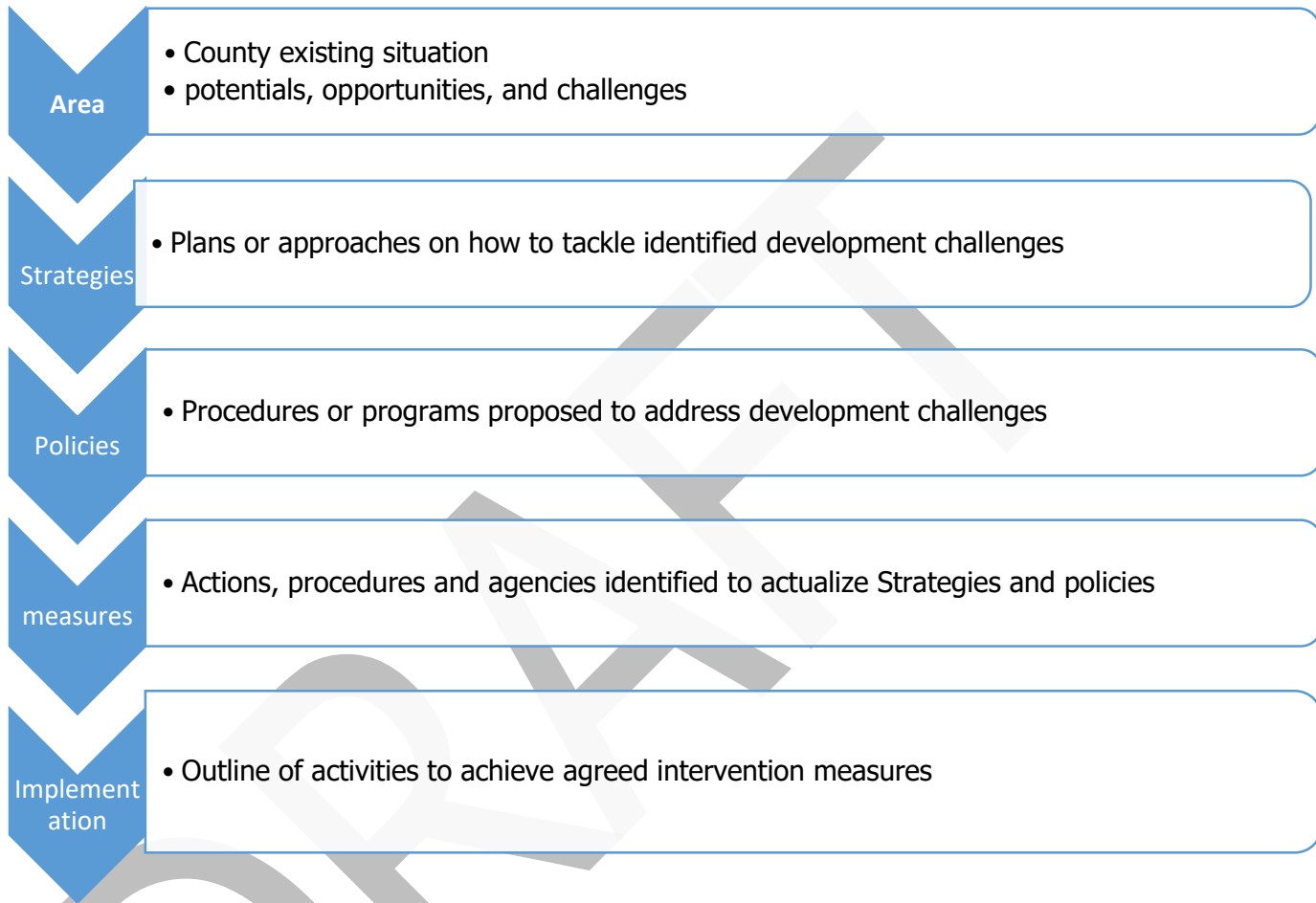
Specifically, the objectives are;

1. To sensitize the County on the provisions of the NSP
2. To promote synergy between National and County planning
3. To guide the County, implement the NSP
4. To identify the roles of the different actors in the implementation of the NSP.

1.4 Scope

The guidelines comprise policies, strategies and measures specific to Kisii County covering approximately 3337 km². The guidelines highlight the County's existing potentials and opportunities, the constraints (challenges) inhibiting harnessing of the potentials, the applicable strategies and respective policies required, and the necessary measures, actions, approaches, plans and procedures prescribed to achieve optimal productivity, sustainability, efficiency and equity in the use of the county's land resources and an outline of activities to execute agreed interventions as captured in the National Spatial Plan, as indicated in Figure 1 below. These guidelines are effective up to the year 2045.

Figure 1: The Scope of the Guidelines



Source: State Department for Physical Planning, 2022

1.5 Justification

Since the approval and launch of the NSP, its implementation has been undertaken in an uncoordinated manner hence the guidelines will provide a standardized approach for all Counties. The guidelines are also an important tool for tracking and evaluating implementation of the NSP both at National and County levels.

The preparation of County Spatial Plans and other lower-level plans which is a mandate of Counties has been slow and, in some Counties, has not begun at all. These guidelines are therefore a quick reference in preparation of county plans and for some Counties to help optimize land in the absence of these plans.

1.6 Application of the Guidelines

The guidelines will be used or applied in the following ways to achieve a more sustained and coordinated development of the County;

- To effectively coordinate planning between the National and the County Government;
- To improve the County Government's capacity to formulate, coordinate and implement integrated development policies, strategies, measures, programs and projects to address spatially unbalanced development;
- To inform strategic infrastructure policy and public investment decisions which support the achievement of balanced development in the County;
- To strengthen County inter-sectoral coordination within a spatial framework and provide the private sector with a clear context in which they can make investment decisions;
- To optimize the use of land and natural resources by providing a framework for making sustainable locational choices for sustainable development and conservation of land productivity in the County.

1.7 Process of Preparing the Guidelines

The process involved reviewing the National Spatial Plan and identifying key issues, spatial policies, development strategies and measures specific to Kisii County. These key issues, spatial policies, development strategies and measures will be realized through preparation of County and other lower-level plans.

Research was undertaken on various thematic areas to enrich the County specific issues and development strategies as well as policy guidelines and measures/interventions. Further, preparation of the guidelines considered the constitutional, policy and legal provisions on physical and land use planning. Expert opinion was sought on the identified issues, policies, measures and strategies for implementation viability.

The preparation of the guidelines was identified as one of the implementation tools of the NSP, in which key NSP issues, policies, strategies and measures were translated into specific action plans, programs and projects at the County level.

1.8 Targeted users of the Guidelines

These Guidelines have diverse consumers and application depending on prevailing circumstances and actors as demonstrated in Table 1 below:

Table 1: Targeted users of the guidelines

User	Area of application
County executive	<ul style="list-style-type: none">• Preparation of county and lower-level plans• Coordination and Linkage of planning function• Formulation of county land optimization policies and strategies• Establishing county specific planning institutions• Allocation of resources to priority sectors
County Planning Units	<ul style="list-style-type: none">• Prepare, coordinate and implement spatial plans• Quality control of plans and consultancy services• Formulating strategies and development guidelines• implementation of county specific plans and policies• Management of diverse county resources
County assembly	<ul style="list-style-type: none">• Approval of strategic sectoral budgets such as planning• Vetting of various county specific plans• Formulation and passing of county planning legislation• Enhancing their oversight and representation roles

	<ul style="list-style-type: none"> • capacity to formulate ward development spatial plans
Ministries, departments and agencies	<ul style="list-style-type: none"> • Mainstreaming relevant NSP policies, programs and projects • Allocation of resources to priority areas, • Strengthening linkages with spatial planning in resource management
The National Land Commission (NLC)	<ul style="list-style-type: none"> • Oversight role in land use planning to ensure efficient implementation of the NSP • Ensure relevant planning authorities carry out their functions as required by the law
Practitioners in the built environment	<ul style="list-style-type: none"> • Advance NSP relevant policies, programs and projects hence optimization of land resource • Appreciate sectoral Linkages to spatial planning • Facilitate incorporation of the policies, strategies and measures into, county specific plans
Community, developers and investors	<ul style="list-style-type: none"> • comprehend the county priority sectors and County Plans and policies • Complement county spatial planning and implementation measures • Making Informed investment decisions
Development partners	<ul style="list-style-type: none"> • Reference frame for selecting and funding spatial planning activities • Understand planning linkages and implementation • Informed development decisions
Training institutions	<ul style="list-style-type: none"> • Compliment the curriculum for training of spatial planners • Understand the planning procedures and processes

1.9 Key Principles

The principles engendered in NSP have been cascaded in these guidelines to promote sustainable development at national and county levels. These include the following:

1. **Effective Public participation/engagement:** All plans shall be prepared in a participatory and consultative manner with relevant stakeholders and sectoral actors.
2. **Urban containment/Compact cities:** Local plans shall strive to limit and control urban growth within the set urban boundaries to protect rich agricultural land, mitigate urban sprawl and reduce cost of infrastructural provision.

3. **Livability:** The planning of urban areas shall enhance the livability index in the area of housing, environment, transportation, health, and social engagement. The urban areas must be economically viable, socially inclusive and ecologically sustainable.

4. **Smart and green urban growth:** Plans shall promote sustainable use of energy, creation of green spaces, reduce the need for car travel, and promote use of local materials, support businesses, protection of heritage and creation of unique character.

5. **Sustainable development:** Balancing social, economic and environmental dimensions of development and catering for current and future generations.

6. **Promotion of ecological integrity:** Plans shall promote the protection and conservation of environmentally sensitive areas.

7. **Promote public transportation:** Favor public transportation over private transport to ensure efficiency and functionality of urban places.

DRAFT

2 CHAPTER 2: THE POLICY, LEGAL AND PLANNING FRAMEWORK FOR THE GUIDELINES

2.1 Constitutional context

The formulation of these guidelines took into account the Constitution of Kenya 2010 aspirations and Principles. Article 66 of the Constitution of Kenya 2010 gives the State powers to regulate use of any land and property in the interest of land use planning among others. The guidelines are therefore within and in response to the aspirations, values and principles as provided for in the constitution.

2.2 Policy Context

2.2.1 Sessional Paper No. 10 of 2012 on Kenya Vision 2030

Kenya Vision 2030 is the overarching national development framework which all plans should be aligned to. The preparation of all spatial plans should take cognizance of the aspirations, foundations and development concepts of the vision. The preparation of the first National Spatial Plan is identified in Kenya Vision 2030 as a flagship project and is regarded as one of the foundations for socio-economic transformation. Hence the need for linkage between national planning and county planning which will be achieved through mainstreaming NSP requirements into CSPs and other lower-level plans by preparing NSP county specific guidelines to implement the NSP at lower levels.

2.2.2 Sessional Paper No. 01 of 2017 on National Land Use Policy

The policy was formulated to address the various challenges related to land use and ensure efficient, productive and sustainable use of land. The main goal of the policy is to provide legal, administrative, institutional and technological framework for optimal utilization and productivity of land related resources in a sustainable and desirable manner at national, County and community levels.

The policy recommends the preparation of a National Spatial Plan to provide an integrated framework for the development of the country including guidelines for sustainable rural and urban planning management. The policy also provides for the preparation of planning guidelines, policies and standards to be observed by County Governments and other sectoral agencies within the frameworks of approved physical and land use development plans. These guidelines have been prepared on this basis

and they are to be observed by counties in the implementation of the National Spatial Plan.

2.3 Legal Context

Various Acts of Parliament are in place to provide the legal framework for the implementation of the mandate provided for in Article 66 of the Constitution. The Physical and Land Use Planning Act, 2019, The Urban Areas and Cities (Amendment) Act, 2019, County Governments Act No. 17 of 2012, The Land Act No. 6 of 2012, National Land Commission Act No. 5 of 2012 among others. The NSP County specific guidelines are prepared in this context and meet this criterion.

2.3.1 The Physical and Land Use Planning Act No. 13 of 2019

This is the overarching statute that provides for formulation of both national and county physical and land use planning policies, guidelines and standards. The Act further provides for administration, types, content, process and approval of the various types of Physical and Land Use Development Plans.

2.3.2 County Governments Act, 2012

This statute mandates County Governments to carry out the planning function at the county level. The guidelines enhance the capacity to prepare the various county level plans that meet the recommended quality and standards.

2.3.3 The Urban Areas and Cities (Amendment) Act, 2019

The statute provides for classification of urban areas and cities, their governance and management, and for integrated development planning. The guidelines are a basis for preparation of these lower-level plans.

2.3.4 Environmental Management and Coordination Act, 2015

The Act provides for the establishment of an appropriate legal and institutional framework for the management of the environment as well as guidelines relating to environmental management and prevention or abatement of environmental degradation. The guidelines take cognizance of this Act and will be implemented within the framework.

2.3.5 National Land Commission Act, 2012

Provides the National Land Commission the management and administration of public land on behalf of the National and County Government monitor and oversight planning in the country to monitor and oversight planning in the country. The guidelines fall within the ambit of this statute and will facilitate their oversight responsibilities.

2.4 Planning Context

2.4.1 National Spatial Plan (NSP)

The National Spatial Plan (NSP) covers the whole country encompassing the exclusive economic zone. The NSP outlines policies and strategies geared towards influencing desired future distribution and organization of human activity outlined in Vision 2030 and sectoral policies and plans. It aims at achieving economic efficiency and balanced development. The various County Spatial Plans should be aligned to the policies outlined in the NSP as demonstrated in Figure 2 below.

Figure 2: Policy focus of the NSP



Source: National Spatial Plan, 2015-2045

To actualize the NSP a comprehensive implementation strategy has been proposed that embraces a multiplicity of actors including National Government Ministries, Departments and Agencies, County Governments and the National Land Commission. The strategy proposes the establishment of the following institutions as key in the implementation of the Plan; The National Physical Planning Council, the National Technical Committee and the County Physical Planning Committee.

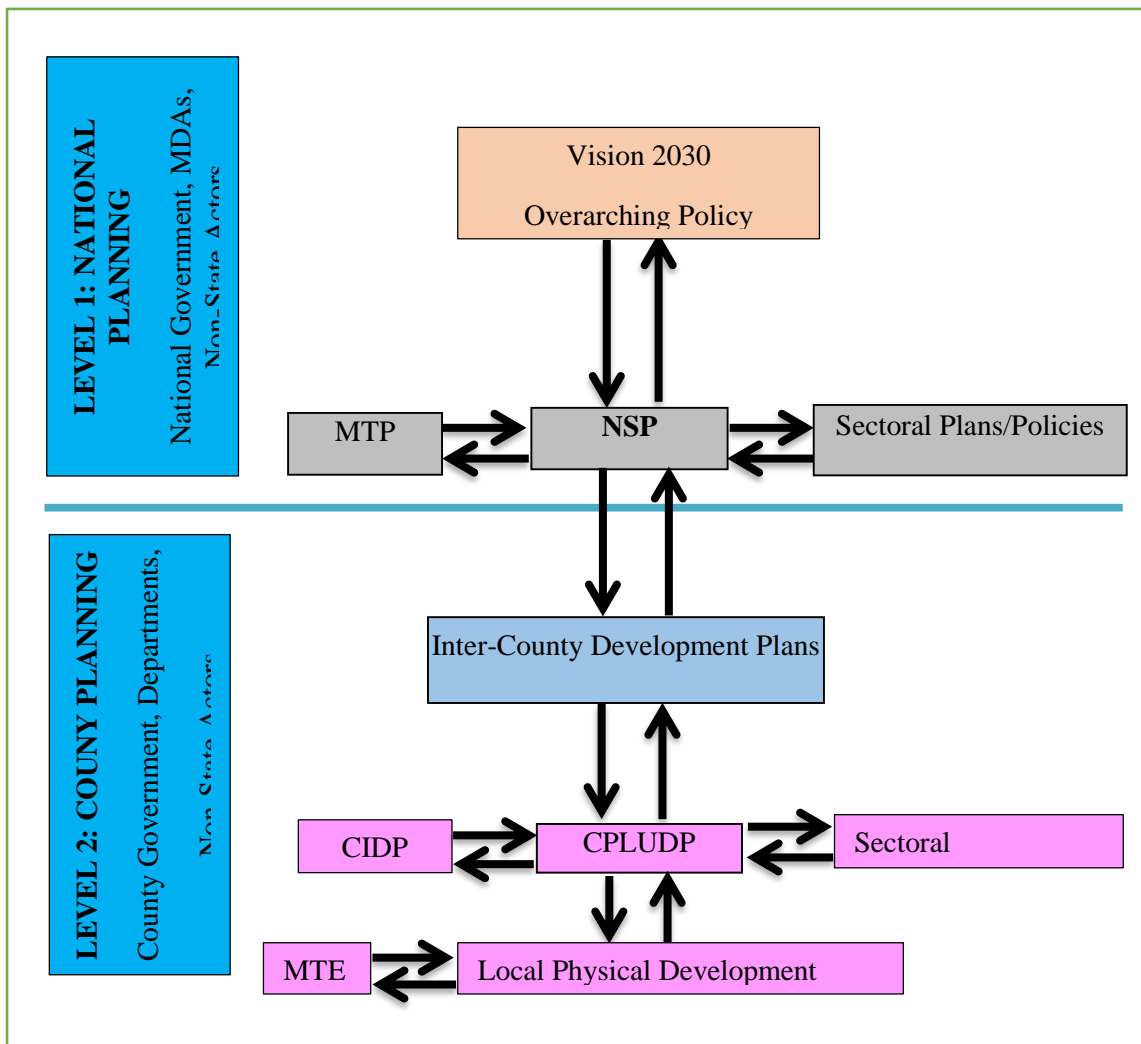
2.4.2 NSP linkage to other plans

The linkage of the National Spatial Plan (NSP) to county and other lower-level plans is key to realization of its aspirations and the successful actualization of these plans. The NSP provides a spatial framework to ground the Vision 2030 flagships projects and form a basis for coordination of County policies, strategies, measures and plans.

Inter County and County plans take into considerations the policies, measures and strategies of the NSP and implements them actualizing its aspirations.

County Physical and Land Use Development Plans provide a framework where the CIDP draws its programs and projects. The implementation of the CIDP in turn leads to realization of the objectives of the County Physical and Land Use Development Plan.

Figure 3: NSP Linkage to other plans



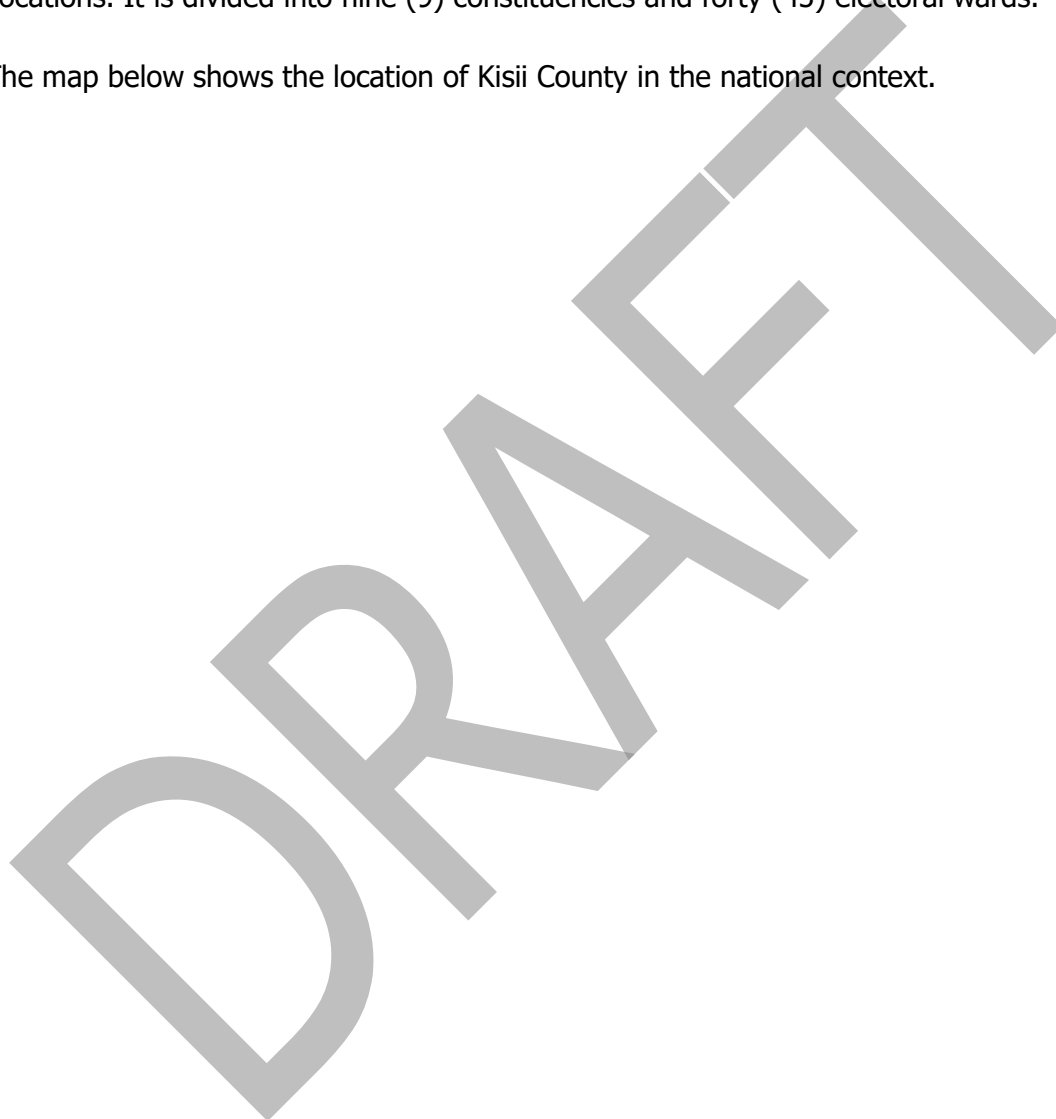
Source: National Spatial Plan, 2015-2045

3 CHAPTER 3: COUNTY PROFILE

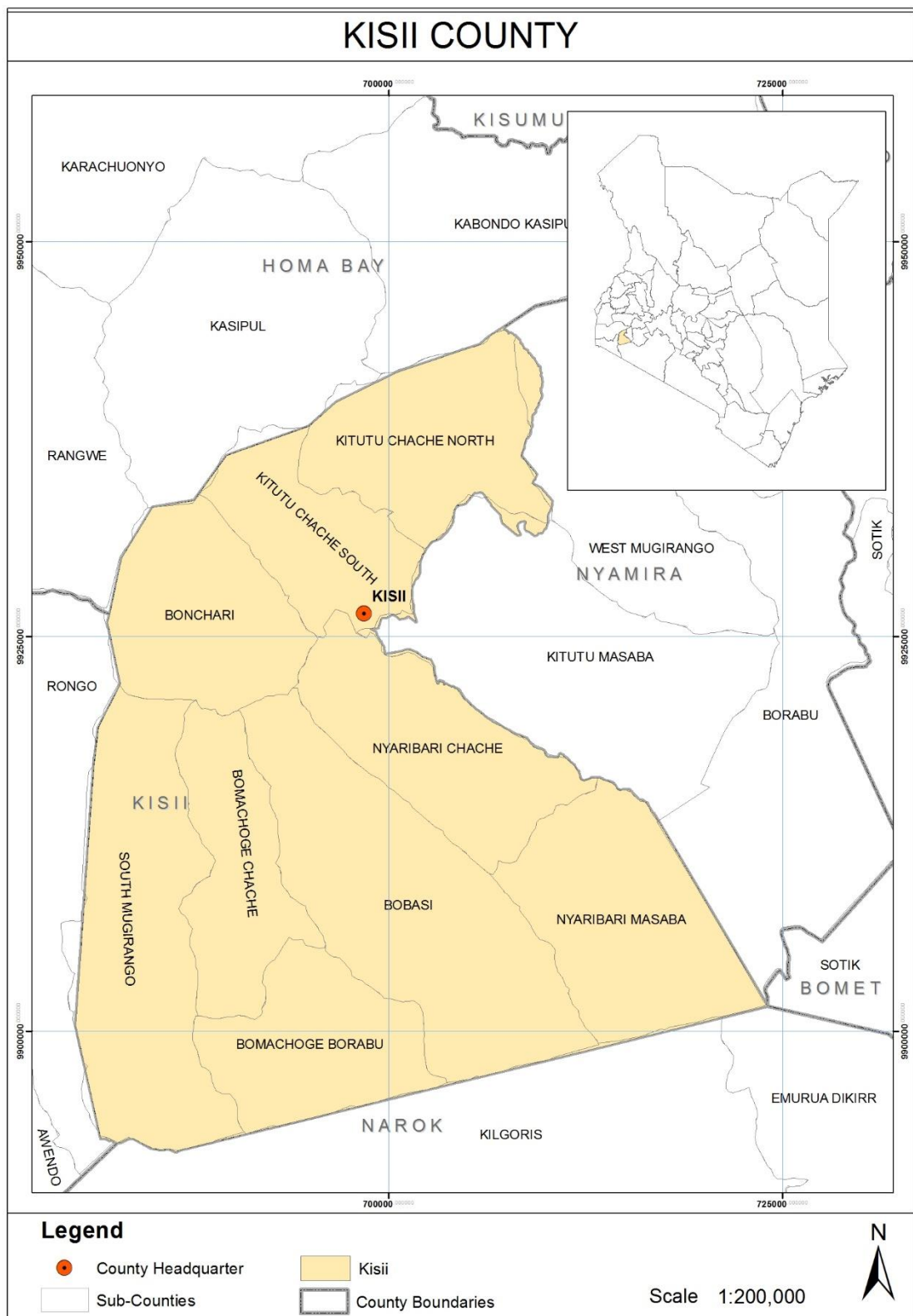
3.1 Location Context

Kisii County shares a common border with Nyamira County to the North East, Narok County to the South and Homabay and Migori Counties to the West. The County lies between latitude 0° 40' 38.4" South, and longitude 34° 34' 46° 61" East and covers an area of 1,317.5 km². The County is divided into 11 Sub-Counties, 33 Divisions, 103 Locations and 237 Sub Locations. It is divided into nine (9) constituencies and forty (45) electoral wards.

The map below shows the location of Kisii County in the national context.



Map 1: Location of Kisii County



Source: State Department of physical planning, 2022

3.2 Bio Physical Characteristics

Topography: hilly topography with several ridges and valleys. Divided into three main topographical zones. The first zone cover areas lying below 1,500m above sea level, the second zone covers areas lying between 1,500 -1,800m above sea level while the third zone covers areas lying above 1,800m above sea level. It is traversed by permanent rivers throughout the county. Presence of red volcanic soils, clay soils, red loams and sandy soils. Existence of black cotton soils and organic peat soils that are favorable for growing cash crops (tea, coffee, and pyrethrum) and subsistence crops. Presence of non-gazetted major forests that are not optimally used. The main forest products in the County are timber, electricity and construction poles, firewood, and medicinal products.

Ecological conditions: divided into three ecological zones comprising the Upper Midland (UM) 75 percent; Lower Highland (LH) 20 percent; and, Lower Midland (LM) 5 percent. Approximately 78 percent of the County is arable.

Climatic conditions: exhibits a highland equatorial climate resulting into a bimodal rainfall pattern with an average annual rainfall of 1,500mm. The maximum temperatures in the County range between 21°C and 30°C, while the minimum temperatures range between 15°C and 20°C. The high and relatively liable rainfall patterns coupled with moderate temperatures are suitable for farming.

Mining: presence of minerals (soapstone and granite). Extraction of sand clay and ballast is also practiced.

Tourism: presence of geological sites that offer good tourist sites. Gateway to Maasai Mara in Narok and Ruma Park in Homabay Counties with a good road network coupled with its proximity to Kisumu International Airport and Homabay airstrip making it very accessible by both road and air from the main towns in western Kenya.

Land and land Use Patterns

Land is the most important resource from which the county generates goods and services for the people. The county economy is primarily agro-based where 90% of the population derive its livelihood directly from land. Land is classified into various

agro-climatic zones which determine the suitability of an area for a particular land use. Kisii County is classified as a high potential zone. Presently, existing land uses can largely be classified into the following categories;

- i. Agricultural
- ii. Built up areas
- iii. Conservation

The spread of these land uses is uneven across the county due to variations in climatic elements such as temperature, rainfall, humidity, slope, and other physical features. Nevertheless, changes in land use patterns have been observed in many parts of the county. The main reasons for changes in land use patterns include;

- i. Increasing population
- ii. Rising demand for food and other cash crops
- iii. Increasing urbanization
- iv. Rising standards of living

3.3 Socio-Economic Characteristics

3.3.1 Population and Demography

According to the Kenya National Bureau of Statistics (KNBS), 2019, the population of Kisii County was 1,266,822 composed of 605,784 males and 661,038 females and 38 intersex at an annual growth rate of 2.75 percent. By the end of the planning period, the total population will be 2,564,743. The table below shows the projections for both males and females up to the year 2045. The table below shows the projection of Kisii to 2045 for both males and females.

Table 1: Population projection to the year 2045

year	2019	2020		2025		2030		2035		2040		2045	
Population size	1,266,860	1,301,660		1,490,757		1,707,325		1,955,354		2,239,415		2,564,743	
		M	F	M	F	M	F	M	F	M	F	M	F
		622425	679195	712847	777865	816405	890869	935007	1020288	1070839	1168509	1226404	1338262
households	316,715	317,478		363,599		416,421		476,916		546,199		625,547	

Area	1,323.0						
Density	958	983.87	1127	1290	1478	1693	1939

3.3.2 Economy

The main economic activity carried out in the county is agriculture (crop farming and livestock keeping). There are major tea factories in the County, and a number of cottage, agro-based and value addition. The potential components of agriculture vary within the rural areas such as crops, livestock, fishing and forestry that have been either under-utilized or not utilized. However, some of these agriculturally potential areas are experiencing increased pressure by urban sprawl. There has also been increased subdivision of the rich agricultural land into small uneconomic units. All these among others have contributed to the reduced production.

3.3.3 Physical Infrastructure

Infrastructure is key to the achievement of the National Spatial Plan objectives of global competitiveness, regional balance and optimal utilization of land and other resources. Kisii has fairly developed infrastructure including transport, physical and social infrastructure. Which have a high potential of economically empowering its People and attracting private investors if well maintained. The sector faces problems regarding poor connection, low coverage, unreliability, high costs, skewed distribution and low/surpassed design. To rectify this situation clear indicative policy, strategies and measures have to be developed and implemented to achieve overall efficiency.

The main transportation network used in the county is the road network, the Nairobi-Narok-Kisii-Kisii road B3 traverses the county hence improves the socio-economic well-being of the county. The county has an airstrip (suneka).

3.3.4 Public Utilities

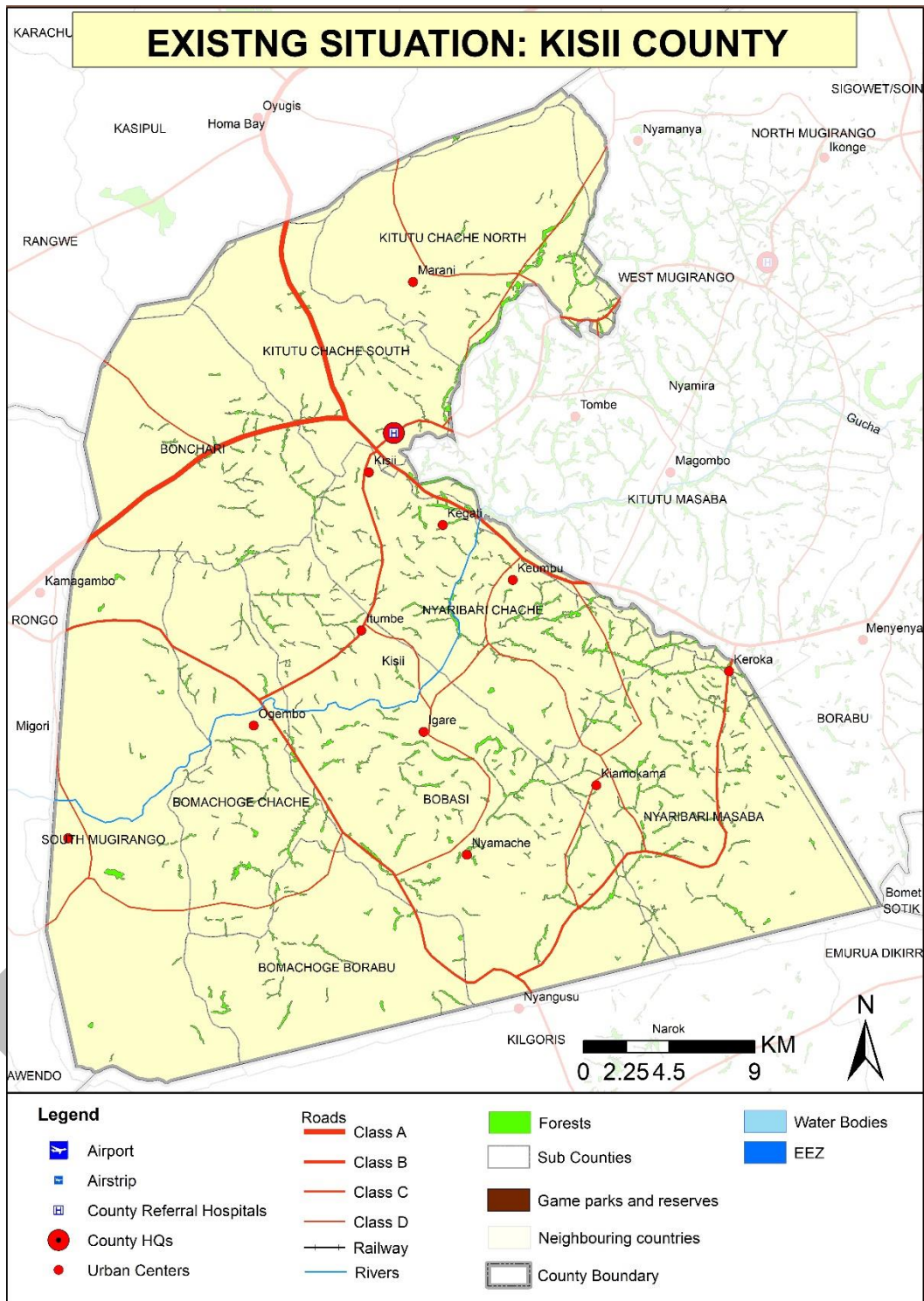
To achieve a spatial and balanced regional development and meet demands of a growing population, there is need to develop and enhance economic infrastructure

such as water services, waste management, energy and ICT to provide the foundation for economic development.

The map below shows the existing situation in Kisii County as described above.



Map 2: Existing situation in Kisii County



Source: State Department of physical planning, 2022

3.4 The County's Comparative Advantage

- a) **Resource endowment:** Kisii County is endowed with several natural resources, which among them are exploited, under or not exploited. These include rich agricultural soils; mineral deposits (soapstone, granite and ballast); rivers and forests. The exploitation of these resources would lead to increased income generation, foreign exchange and creation of employment opportunities in different regions thus spurring development.
- b) **High agricultural potential:** the county has high potential for rain fed agriculture because of its agro climatic zone. Over 78% of the County's total land is arable that is suitable for farming. Besides these the county has a greater potential for irrigation as well as the presence of many water sources that increases water supply.
- c) **Transportation corridor:** The Isebania-Kisii-Ahero road which forms part of the A1 road connecting with Tanzania in the south and South Sudan in the north A1 a major transportation corridor in the country traverses the county.
- d) There are several tourist attraction sites which include unique landscapes as well as endowed with wild animals that that contributes to county's source of revenue and community will earn livelihood from the activities that would be taking place from there.

4 CHAPTER 4: DEVELOPMENT STRATEGIES AND POLICY GUIDELINES FOR KISII COUNTY

4.1 County Specific Issues and Development Strategies

This section provides strategies for spatial growth and development of the County by addressing the factors that prevent the County from achieving the intended development goals and objectives.

The development strategies aim at managing the overall development impacts, optimizing use of natural resources, creating a balanced County and transforming rural areas. Specifically, the development strategies have been proposed to address the following aspects of the County's development agenda:

- Managing the national competitiveness
- Optimal use of land and other resources
- Promoting balanced Intra- County development
- Rural development in the county
- Urbanization

The following are detailed NSP sector-specific issues and strategies that apply to Kisii County.

DRAFT

Table 2: Sector specific issues and strategies

Strategy 1: managing national Competitiveness		
Opportunities	Constraints	Strategies
<ul style="list-style-type: none"> • Favorable agro-climatic zone that supports a variety of agricultural production (agro-climatic zone II) • Member of the Lake Region Economic Bloc (LREC) • Strategic location and destinations in the County • Trade liberalization and open global market for goods and services • Presence of minerals (soapstone and granite) 	<ul style="list-style-type: none"> • Use of inappropriate farm inputs and technology • Lack of appropriate agricultural support infrastructures • Poor state and lack of connectivity of the roads • Inadequate linkages with neighboring counties • Inadequate funds to manage the Bloc • High cost and unreliability of electricity supply. • High cost of production occasioned by high cost of energy, inefficient transport system, and outdated technology. • Low quality of products and services. 	<ul style="list-style-type: none"> • Adopt modern methods and practices as well as technology in the whole range of agricultural capabilities in that county • Plan and provide appropriate hierarchy of roads to increase internal and external linkages within the county • Leverage of the potential areas of collaboration with bloc members. • Provide adequate and appropriate infrastructure • Preparation and review of the county spatial plan • Locate export oriented industrial and manufacturing activities in the County • Invest in alternative energy sources such as solar, wind, biogas)

Strategy 2: Optimizing Land and Natural Resources		
Agriculture(Agro-Climatic Zone II)		
Opportunities	Constraints	Strategies
<ul style="list-style-type: none"> • Agro-climatic zone (II) with high potential for agricultural production • High irrigation potential through rainfall and permanent rivers • Presence of agro based cooperatives and other marketing organizations • Readily available market for agricultural produce • Potential for fish farming • Availability of high-breed dairy cows 	<ul style="list-style-type: none"> • Fragmentation of land into uneconomical land parcels due to human settlement • Underutilization of the county's irrigation potential • Inadequate agricultural support infrastructures • Use of inappropriate farm inputs and technology • Inadequate capacity, skills and resources to fund, develop and operate • Inadequate agricultural extension services • Inadequate and inefficient storage facilities leading to post harvest losses • Soil erosion and degradation • Low level of value addition • Crop and livestock diseases 	<ul style="list-style-type: none"> • Formulate appropriate policy framework to stop further fragmentation of agricultural land and explore land consolidation strategy • Restrict the conversion of agricultural land to any other use. • Collaborate with other partners to enhance the irrigation potential • Provide adequate and appropriate agricultural infrastructure • Adopt modern methods and practices as well as technology in the whole range of agricultural capabilities in the county • Formulate policies to tap the capability and potentials of the county • Increase access to agricultural extension services • Promote best farming practices that promote soil conservation • Promote agricultural diversification • Develop agro-based industries for value addition • Establish and equip laboratory facilities for disease diagnosis

Environment (Conservation Area & Protection Area)		
Opportunities	Constraints	Strategies
<ul style="list-style-type: none"> Existing forests, wet lands and other natural resource Diverse biodiversity High potential water catchment area with a water tower, wetlands and natural forests (Rank 1 Protection areas), and water pans, springs and rivers (Rank 2 Protection areas). Existing environmental policies and regulations 	<ul style="list-style-type: none"> deforestation Encroachment by human settlement and activities Declining water quality from water Pollution and extensive cultivation along river banks Drying up of water sources (planting of blue gum trees along river banks) Unsustainable mining activities 	<ul style="list-style-type: none"> Increase forest cover through afforestation, re-afforestation and agro forestry Formulate policy frameworks to contain human settlement and hinder land use change within these areas Formulate policy frameworks to protect water catchment areas. Rehabilitate and restore available and degraded wetlands and rivers Sustainable mining activities Preserve and conserve existing forests, wetlands and other natural resources Discourage planting of blue gum tree species along river banks (replace blue gum with Grevillea Enforcement of regulations on environmental conservation
Natural Resource		
Opportunities	Constraints	Strategies
<ul style="list-style-type: none"> Availability of minerals (soapstone and granite) Numerous water sources including rivers, water springs, rain water and underground water reservoirs 	<ul style="list-style-type: none"> Uncoordinated and unsustainable exploitation of minerals inadequate technology and exploration infrastructure 	<ul style="list-style-type: none"> Adopt sustainable exploitation of the available natural resource potential Invest in appropriate technology and infrastructure

<ul style="list-style-type: none"> • Increased demand for electricity 	<ul style="list-style-type: none"> • Underutilization and exploitation of geothermal, hydroelectric and wind energy • Lack of a regulatory framework in exploitation of natural resources • Inadequate rain water harvesting technology • High costs of exploiting available natural resources. 	<ul style="list-style-type: none"> • Optimal utilization of developed green energy resources • Collaborate with other partners to enhance the green energy potential • Plan and provide appropriate storm water management infrastructure to optimize rain water harvesting • Formulate policies to guide regulation of underground water exploitation • Protect the riparian reserves
<p>Industrial</p>		
<ul style="list-style-type: none"> • High potential for agro- based industries • High potential for the Rural based industries • Availability of raw materials • Presence of several factories engaging in tea processing, coffee pulping confectioneries and water bottling 	<ul style="list-style-type: none"> • poor linkage to the markets due Inadequate internal and external connectivity and support infrastructure • Low technological adaptation for value addition • High cost of production • Lack of major processing and manufacturing industries • price fluctuation 	<ul style="list-style-type: none"> • Plan and provide appropriate hierarchy of roads to increase internal and external linkages within the county • Provide appropriate technology to enhance value addition. • Diversify energy production sources to reduce costs of production and enhance its reliability • Promote the formation of cooperatives and Saccos to advance marketing and control of market prices • Invest in exploration of additional potential mineral reserves • Prepare an industrial master plan

Tourism		
Opportunities	Constraints	Strategies
<ul style="list-style-type: none"> • Availability of forests that are home to porcupines; monkeys; snakes and various species of birds • Gateway to Maasai Mara national reserve in Narok • Existing Agro-tourism, nature based tourism, cultural tourism, medical tourism and sport tourism attractions 	<ul style="list-style-type: none"> • Little exploitation of tourism potential due to poor quality and inadequate infrastructure • Encroachment of human activities into the protected areas • Untapped and declining product diversity • Poor and less assertive marketing strategies • 	<ul style="list-style-type: none"> • Plan and provide appropriate tourism support infrastructure. • Strict enforcement of the existing regulations for safeguarding protection areas • Identify and delegate potential protection and conservation areas for gazettelement • Promote investment in sustainable tourism (eco-tourism) • Identify and map potential eco-tourism development sites. • Promote domestic tourism by providing incentives and subsidies • Diversify tourism
Transport		
Opportunities	Constraints	Strategies
<ul style="list-style-type: none"> • Presence of Isebania-Kisii-Ahero road network connectivity • Presence of suneka airstrip • Rapid urbanization 	<ul style="list-style-type: none"> • Poor state and lack of connectivity of the roads • Inadequate linkages with neighboring counties • Inadequate public transport system, Lack of NMT Infrastructure and inappropriate modal split 	<ul style="list-style-type: none"> • Plan and provide appropriate hierarchy of roads to increase internal and external linkages within the county • Prepare and implement sustainable mobility plans • Enforce a regulatory standard requirement for all public transport service operators

	<ul style="list-style-type: none"> • Encroachment on road reserves • Poor condition of the existing County roads 	<ul style="list-style-type: none"> • Delineate and enforce road reserve extents • Improve the condition of all County roads to motorable standards
PUBLIC UTILITIES		
Water and Sanitation		
Opportunities	Constraints	Strategies
<ul style="list-style-type: none"> • Availability of water sources (rivers, springs, boreholes, wells, dams) • Existing sewerage system in Kisii town • Existing institutions (Kisii Water and Sewerage Company) 	<ul style="list-style-type: none"> • Encroachment of human activities into catchment areas • Population increase resulting to high demand surpassing its supply • contamination of the available water (Water pollution) • Inadequate sewerage coverage and treatment facilities. 	<ul style="list-style-type: none"> • Effective enforcement of environmental and natural resources policies, laws and regulations • Improve access to clean and safe water • Increase access to adequate sanitation facilities • Investments in water harvesting technologies and storage facilities • Appropriate sanitation infrastructure including collection, disposal and treatment system be developed in all urban areas • Develop appropriate water reticulation network
Solid waste management		
Opportunities	Constraints	Strategies
<ul style="list-style-type: none"> • Existing solid waste management facilities 	<ul style="list-style-type: none"> • Increased solid waste generation due to increased population pressure • Inadequate solid wastes management facilities • Unsustainable waste disposal 	<ul style="list-style-type: none"> • Provide solid waste management facilities • Promote the, Reduce, Reuse, Recycle (3Rs) • Explore other modes of solid waste management such as recycling of waste materials and waste-energy facilities

		<ul style="list-style-type: none"> • Collaborate with other entities on waste management • Identify and maintain final disposal sites
ICT		
Opportunities	Constraints	Strategies
<ul style="list-style-type: none"> • Existing National Fiber Optic network (NOFBI) • Presence of mobile network service providers i.e. Safaricom, Airtel, Telkom 	<ul style="list-style-type: none"> • Poor access to ICT infrastructure • High cost of ICT equipment 	<ul style="list-style-type: none"> • Increase ICT relevant infrastructure • Mainstream ICT in all sectors to promote service delivery • Improve ICT adoption • improve on existing platforms such as Huduma centre, BPO services and E-government
Sports		
<ul style="list-style-type: none"> • Availability of sporting facilities including Gusii stadium and playgrounds • Untapped sporting talent in the County 	<ul style="list-style-type: none"> • Poor maintenance of the existing sporting infrastructure • Inadequate marketing or promotion of the sports sector • Inadequate training or capacity building of untapped talent 	<ul style="list-style-type: none"> • Promote sound maintenance and management strategies for existing facilities • Promote the sector through providing incentives and subsidies • Encourage private public partnerships in the expansion of the sports sector • Promote local talent through investing in sports training institutions

Strategy 3: promoting balanced Intra-County development.		
Opportunities	Constraints	Strategies
<ul style="list-style-type: none"> • Resource endowment including fertile soils, forests, favorable climatic conditions • Enabling policy and legal frameworks • Tourism • Urbanization • Existing natural resources and agricultural products • Establishment of the County under devolution 	<ul style="list-style-type: none"> • Weak linkages between rural and urban areas. • Inadequate infrastructural facilities and services • Under-exploitation of resources • Uneven distribution of social infrastructure 	<ul style="list-style-type: none"> • Establish strong rural urban linkages • Promote industrialization and value addition in less developed regions • Promote investment in sustainable tourism • Promote irrigation activities for improved productivity • Promote equal distribution of social infrastructure • Strengthen the existing economic zone (Lake Region Economic Region) • Encourage equitable exploitation and sound management of available resources
Strategy 4: Promoting Rural Development		
Opportunities	Constraints	Strategies
<ul style="list-style-type: none"> • Resource endowment in rural areas (agriculture, large-scale livestock production and tourism) • Human resource (both skilled and unskilled) • Existing physical and social infrastructure (roads, schools, health centres, administrative units) • Enabling policy and legal frameworks 	<ul style="list-style-type: none"> • Inefficient and dilapidated infrastructure facilities and services • Weak rural-urban linkages • Underutilization of the resources in the rural areas • inappropriate transport infrastructure and utilities • The dispersed nature of the human settlements, 	<ul style="list-style-type: none"> • industrialization and value addition in less developed regions • Plan and provide strong rural urban linkages • Sustainable utilization of available resources in the rural areas • Plan and develop appropriate transport and infrastructural facilities and services to support the exploitation of resources

<ul style="list-style-type: none"> Establishment of the County under devolution 	<ul style="list-style-type: none"> Fragmentation of land into uneconomical parcels due to population pressure 	<ul style="list-style-type: none"> Formulate appropriate policy framework to stop further fragmentation of agricultural land and explore land consolidation strategy Modernize agriculture to promote high yield production
<p>Strategy 5: Urbanization</p>		
<p>Opportunities</p>	<p>Constraints</p>	<p>Strategies</p>
<ul style="list-style-type: none"> Human resource (both skilled and unskilled) Enabling policy framework Existing infrastructure Devolution of governance Establishment of equalization of funds 	<ul style="list-style-type: none"> Weak rural-urban linkages Rapid urbanization rates Weak and uncoordinated development control and enforcement systems. Poor enforcement of existing legislation on housing development and land use Poor implementation of development plans and planning policies Lack of appropriate transport infrastructure and utilities Deteriorating infrastructure Poor waste management Land and governance issues. Proliferation of informal settlements Land and governance issues Urban sprawl 	<ul style="list-style-type: none"> Strengthen the urban rural linkages to reduce the rate of urbanization Provide services and infrastructure closer to the rural areas Enforce, harmonize and regularly review the existing legislative and regulatory instruments Plan and provide appropriate and adequate transport infrastructure and utilities Promote the development of centres as per its potential and population Promote sustainable waste management Strengthen existing land management institutions Plan, implement and enforce urban plans for the existing centres to control urban sprawl and promote urban containment.

4.2 National Spatial Plan Policy Guidelines and Measures for Kisii County

This section seeks to provide the spatial policy guidelines and measures aimed at promoting the achievements of the objectives of the National Spatial Plan using its guidelines. They aim at enhancing global and national competitiveness and economic efficiency, optimizing the use of land and natural resources, promoting regional balanced development and conservation of the environment.

These policies are supported by a wide range of measures which spell out the specific actions to be undertaken to actualize the policy intentions. The policies shall ensure that the County is nationally competitive as an investment destination, especially in emerging sectors such as the ICT. The policies will also be implemented by the County government's agencies responsible for planning and development control as well as the authorities responsible for land administration.

The following are the policies and measures specific to Kisii County.

DRAFT

Table 3: Policy Guidelines and measures

No	Thematic Area	Policy Guidelines	Measures
1.	Resource Potential Growth regions	<ul style="list-style-type: none"> • Enhanced agricultural production and value addition • Investment in social and physical infrastructure • Environmental conservation Intensive land use • Sustainable urban land use and growth • Balanced growth • Densification of built-up areas 	<ul style="list-style-type: none"> • Infrastructure provision to support value addition initiatives and human settlement • Small and medium urban centres development • Conservation of the environment and natural resources • Rural development through provision of infrastructure, agricultural sector development and related economic activities • Development and rehabilitation of key infrastructure in underserved locations
2.	County spatial structure	<ul style="list-style-type: none"> • The National Spatial Plan shall be the basis for the preparation of lower tier development plans to achieve integrated and sustainable land use planning and to promote harmony and mutual cooperation in planning in Kenya. 	<ul style="list-style-type: none"> • All Inter-County, County and Local physical/spatial plans shall be guided by the objectives and policies of the NSP. • Existing physical/spatial plans shall be reviewed to conform to the objectives and policies of NSP. • All sectoral policies shall take cognizance of the objectives and policies of NSP • The review of the 5-year medium term plans (MTP's) shall take into account provisions of the NSP. • Planning authorities at the national and county levels shall be supported with

			adequate human, financial and technical resources to promote sustainable Physical/spatial planning and development.
3.	Modernizing Agriculture (Agro-climatic zone III)	<ul style="list-style-type: none"> • The agricultural use of land in high potential areas shall be intensified to increase productivity. • Agriculture potential areas in the rural areas to be safeguarded against urbanization and land sub-division • 	<ul style="list-style-type: none"> • Prepare and implement County spatial plan and lower level plans to protect agricultural land • Prohibit and control change of use and subdivision for designated agricultural land. • adopt modern agricultural methods • Provide transport connectivity and adequate inter and intra-road networks as well as other social and physical infrastructure • Value addition to agricultural and livestock products.
4.	Diversifying Tourism (central and great rift valley Circuit)	<ul style="list-style-type: none"> • The county shall promote diversification of tourism by promoting the diverse products available in the county as well as adding more where possible. • Appropriate Tourism support infrastructure and facilities shall be provided • Tourist attraction areas and sites shall be conserved and protected • Governance of the tourism sector shall be enhanced. 	<ul style="list-style-type: none"> • Improve infrastructure that supports tourism • Prepare a county tourism development master plan, which should focus on tourism sites zoning, product development and quality standard of tourism services. • Strictly regulate developments within the tourist attraction sites. • Undertake research to identify more tourist attraction areas and sites, inventorize Agro tourism sites
5.	Managing Human Settlements	<ul style="list-style-type: none"> • Existing urban areas shall be subjected to strict development control to curtail encroachment on high potential agricultural land 	<ul style="list-style-type: none"> • Prepare and implement local physical development plans to define the urban growth limits for the principal urban centres • Enforce strict regulations and justifications on development control processes.

		<ul style="list-style-type: none"> • Rural growth centres shall be rationalized and supported to act as central places and settlements clustered to free the rich agricultural land • Human settlements shall be developed in line with environmental and natural resources conservation • Provision of an efficient, reliable and effective transport system for human settlements • The management and governance of Human • Settlements particularly the urban areas shall be improved. • Advocate for upgrading of the existing settlements and forestalling of new informal settlements • Peri-urban development shall be managed and controlled to contain urban growth within its limits and protect rural land uses. 	<ul style="list-style-type: none"> • Provide requisite infrastructure to support growth and development. • Promote sectors such as agriculture that have potential to stimulate rural development • Incorporate disaster management and mitigation in planning of rural settlements. • Plan and provide an integrated waste management system. • Build institutional capacities of the urban areas management boards
6.	Conserving the Natural Environment	<ul style="list-style-type: none"> • All environmentally sensitive areas shall be protected and utilized in an sustainable manner • All government agencies shall integrate environmental concerns in policy formulation, resource planning and development processes 	<ul style="list-style-type: none"> • Prepare and implement integrated management plans for Environmental sensitive areas • Involve and empower communities in the management of environmentally sensitive areas and promote environmental education and awareness

		<ul style="list-style-type: none"> • Community participation shall be mainstreamed in the protection and conservation of natural resources • National and County Physical Planning departments shall mainstream climate change into their planning processes 	<ul style="list-style-type: none"> • Adopt appropriate land use planning and watershed management practices for sustainable development • Promote sustainable waste Management and Pollution Control • Identify species which are rare and endangered with the aim of protecting them from extinction • Develop and implement harmonized regional plans for sustainable management of trans-boundary resources • Implement the National Climate Change Strategy and the National Climate Change Action plan • Strengthen Environmental Governance and harmonize sectoral policies, legislation and regulations
7.	Integrating the National Transportation Network	<ul style="list-style-type: none"> • An integrated and functional transport system for the county and urban areas shall be developed • An urban transport policy that facilitates an integrated, balanced and environmentally sound urban transport system in which all modes efficiently play their roles shall be developed • Environmental conservation shall be upheld in the planning, development and management of the transportation network 	<ul style="list-style-type: none"> • Provide access and linkage, between county headquarter and sub-county headquarters and link them to national transportation corridors • Adopt transit oriented development in the planning, design and development of all public urban transport • Integrate land use with urban transport planning

		<ul style="list-style-type: none"> • An efficient and affordable Mass Public Transport for all urban areas in the country shall be developed 	<ul style="list-style-type: none"> • Design and develop integrated transport networks that considers all different modes of transport • Establish a comprehensive transport management information system for all transport modes • Develop a public transport policy to regulate planning and management of public transport
8.	Providing Appropriate Infrastructure	<ul style="list-style-type: none"> • Safe, adequate, reliable and affordable electricity for both urban and rural settlements shall be provided • Expansion and improvement of water reticulation systems to facilitate the access to clean, safe, adequate, reliable and affordable water in human settlements shall be promoted • A globally competitive, accessible and affordable higher education, training and research facilities shall be promoted • A network of functional, efficient, safe, accessible and sustainable county health referral infrastructure shall be established • Appropriate, quality, efficient and cost effective ICT infrastructure in both rural and urban areas shall be promoted • The expansion of sewerage systems and waste management facilities shall be promoted to improve sanitation in human settlements 	<ul style="list-style-type: none"> • Mainstream and enforce green energy options in the design of buildings • Increase access to electricity through upgrading and expansion of the national power transmission and distribution network • Development of county rainwater harvesting strategy and water storage investment plans for all the villages and urban centres; • Restore all the water towers. • Build water kiosks and yard taps, develop water supply pipeline systems and sewers, and a comprehensive mapping of all water supplies systems in the informal settlements • All universities and other tertiary institutions to <ul style="list-style-type: none"> • invest in research, technology and innovation • Develop and upgrade physical infrastructure in <ul style="list-style-type: none"> • all education institutions to increase their capacity • Strengthen outreach systems for provision of

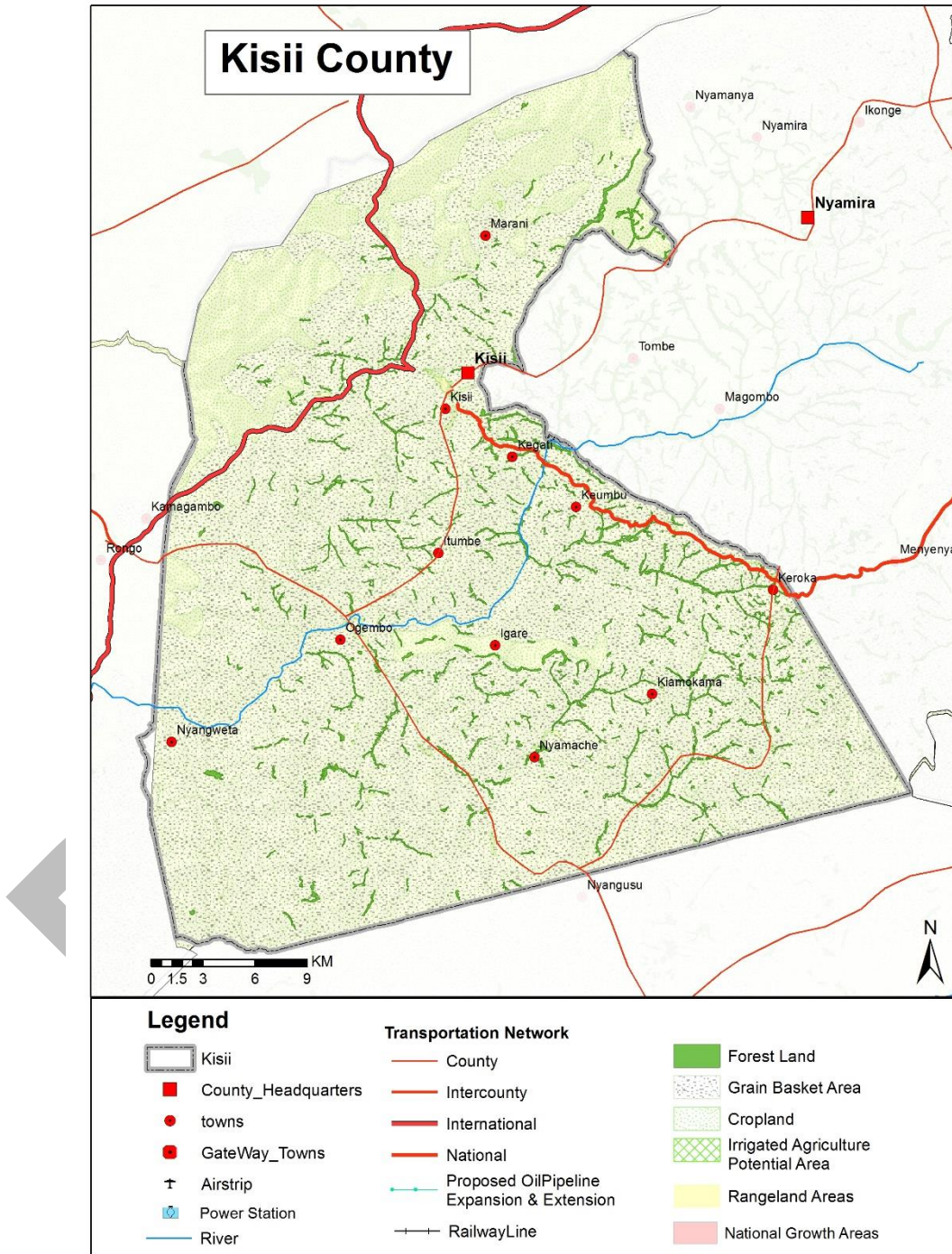
		<ul style="list-style-type: none"> • Sporting infrastructure shall be planned, developed, maintained and the existing rehabilitated to promote sports development 	<ul style="list-style-type: none"> • health services to marginalized and vulnerable population • Provision of quality emergency health services at the point of need • Develop and upgrade ICT Infrastructure to cover all the rural and local growth centres • Mainstream use of ICT in all levels of government and the private sector (e-government) • All spatial plans to make provision for development of sewer systems and treatment works and solid waste disposal sites • Expansion of urban boundaries to be guided by investment in infrastructural services • Adopt appropriate technology to facilitate reduction, recycle and reuse of waste (3R's) • Establish County Sports Talent Centers to nurture and develop sports talents in the county
9.	Towards a Rapidly Industrializing county	<ul style="list-style-type: none"> • The cluster development strategy shall be promoted to focus on proximity to raw materials and markets of region specific products • Specific sites for industrial development shall be identified, planned and serviced with the appropriate infrastructure • Adequate and affordable energy supply for the industrial sector shall be provided 	<ul style="list-style-type: none"> • Prepare and implement an industrial master plan • Promote value addition in processing of local produce • Integrate the industrialization process and environment conservation • Provide an integrated, efficient, reliable and sustainable transport and energy infrastructure

			<ul style="list-style-type: none">• Adopt renewable energy generation programmes• Promote the adoption of energy efficient technologies to lower the demand for energy
--	--	--	-----------------------------------------------------------------------------------------------------------------------------------------------------------------------------------------------

DRAFT

The map below explains the proposals made in Kisii County.

Map 3: Proposals in Kisii County



Source: State Department for physical planning, 2022

5 CHAPTER 5: IMPLEMENTATION AND ADOPTION OF THE GUIDELINES

5.1 Overview

The implementation framework identifies activities and further ties them with responsible actors, resources and timeframes adequate for their execution. It constitutes a deliberately established method, means or system of ensuring that the policies, strategies and measures outlined in the guidelines are continuously and consistently executed to achieve their objectives.

To effectively implement the guidelines, the various sectors, actors and levels of planning have been identified and have to work together and the mandate of the sectors at the National and County levels of planning have to be integrated.

5.2 Implementation Channels

The County Specific Guidelines will be implemented through various approaches including:

1. Preparation of spatial plans to integrate and conform to the proposals of the County Guidelines. The plans include:
 - Inter-County Physical and Land Use Development Plans for Metropolitan regions, conservation zones, river basins, water towers, coastal ecosystems, trans-boundary resource areas and transport corridors, among others.
 - County Physical and Land Use Development Plans.
 - Local Physical and Land Use Development plans for Cities, Urban areas, special area plans, subject plans and detailed neighborhood plans, among others.
 - Sectoral plans
2. Integration of the guideline policies, strategies and measures into the County sector plans, programs and projects. Ministries, Departments and Agencies (MDAs), County and National Departments identified in the plan to administer the policies, strategies

and measures are required to translate them into action plans, programmes and projects and to include them in their subsequent sector plans.

3. Formulation of policies, regulations and standards to guide development control

DRAFT

5.3 Implementation Framework

The implementation of the various policies, strategies, measures, programmes and projects under these Guidelines will involve a wide range of actors. It will require a coordinated approach and partnership between the National and County Governments and non-state actors. It may require re-engineering of institutions and a number of actors to undertake the implementation through a harmonized approach.

The National Spatial Plan identified a multi-leveled framework for implementation of the plan that incorporates all levels of actors. In this regard, the institutions identified in the NSP to undertake implementation of the plan at County-level shall also be mandated to ensure implementation of this Guidelines.

The following are the Institutions mandated to ensure implementation of the County Specific guidelines;

5.3.1 County Physical Planning Committee

The role of the County Planning Committee shall be to ensure aspirations of the guidelines are articulated in preparation of the County Spatial Plans, County Integrated Development Plans and Local Physical and Land Use Development Plans.

The composition of this committee consists of;

- i. The Governor who will be the Chairperson,
- ii. the Deputy Governor,
- iii. the County Executive Committee Members from various sectors
- iv. Directors from various relevant County Departments including Lands and Physical Planning, Economic planning, Agriculture, Industrialization, Tourism, Environment, Transport and Infrastructure

The functions of the committee include;

- 1) To promote effective integration between physical, economic and sectoral planning within the framework of county development policies.
- 2) To provide policy guidance for the implementation of strategic spatial projects
- 3) To ensure that the guidelines policies and measures are mainstreamed in the various county plans.
- 4) To mobilize resource for implementation of the Guidelines.

5.3.2 County Planning Unit (CPU)

The technical Unit shall provide technical support to the various implementing County departments on issues relating to physical planning.

The CPU shall;

- i. Monitor the Implementation of the guidelines.
- ii. To disseminate components of the guidelines to the various county departments.
- iii. Update the County Physical Planning Committee on a regular basis on the implementation of the guidelines.

The County Director of Physical Planning shall be responsible for preparation of an annual state of planning report which shall among other things appraise the status of implementation of the guidelines.

5.3.3 National Land Commission

The National Land Commission shall play its oversight role in land use planning to ensure efficient implementation of the NSP and the guidelines. Other functions of the Commission in the implementation of the NSP and the guidelines include the following: - To formulate mechanisms and parameters for monitoring and overseeing land use planning.

- i. To ensure that relevant planning authorities carry out their functions as required by law.
- ii. To make recommendations for improvements of the planning systems in the county.
- iii. To mobilize resources to support physical/land use planning.

5.4 Monitoring and Evaluation

Implementation of the guidelines will be monitored and evaluated to measure both outputs and outcomes and ensure that the intended actions are implemented in a timely manner. To facilitate attainment of the objectives of the guidelines, performance indicators will be developed by the County Physical Planning Department for efficient monitoring. Periodic reports will be prepared in relation to progress being made in their implementation.

The graphic below illustrates the implementation structure for County Specific guidelines.

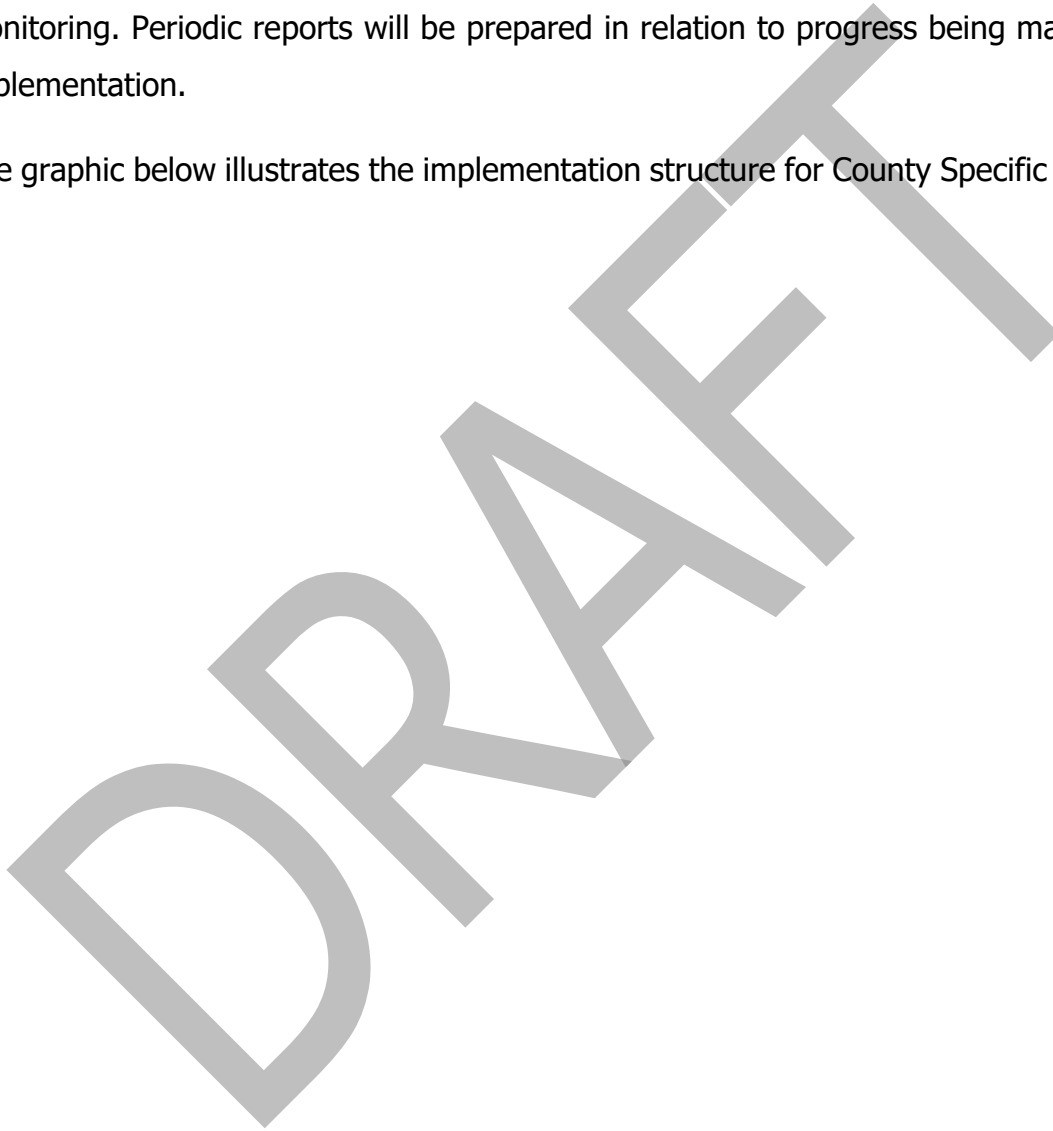
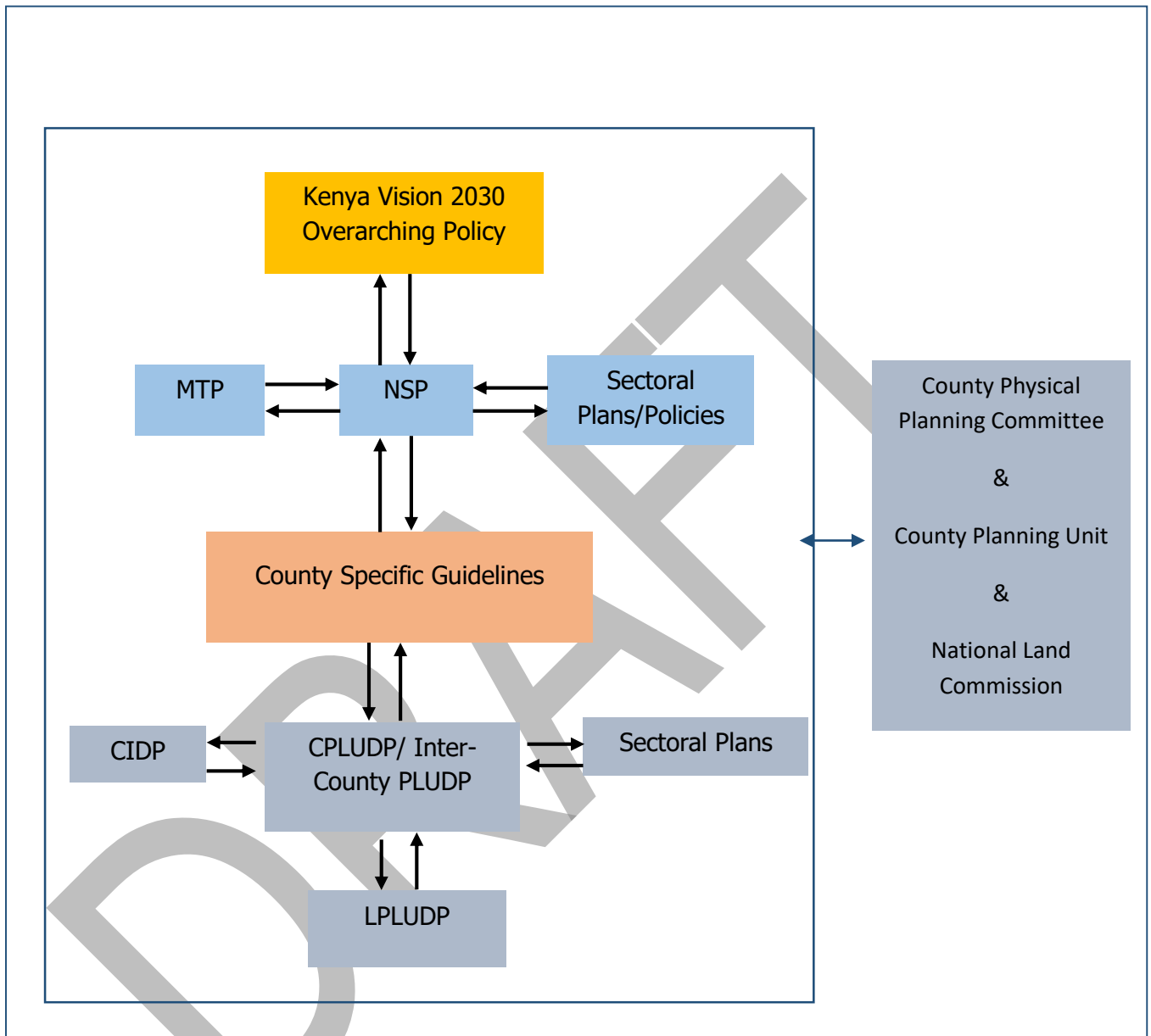


Figure 2: Implementation structure of the guidelines



Source: State Department for Physical Planning, 2022

5.5 Conclusion

The application of these guidelines will be undertaken by a number of actors and hence the need for a coordinated approach. The lead agency will be Kisii County Government which will be responsible for implementing various county specific initiatives proposed by the guidelines.

The National Government, County Government of Kisii, the private sector and the general public will be critical in actualizing the objectives of these guidelines. The County Physical Planning Committee shall develop a communication strategy to enhance the synergies.

The National Department of Physical Planning shall undertake sensitization, training and capacity building of the County Government and National Government institutions and agencies that will be involved in the implementation of these guidelines. Special attention will be given to the County physical planning units, as they will be expected to provide technical expertise in the implementation of the County specific policies and strategies.