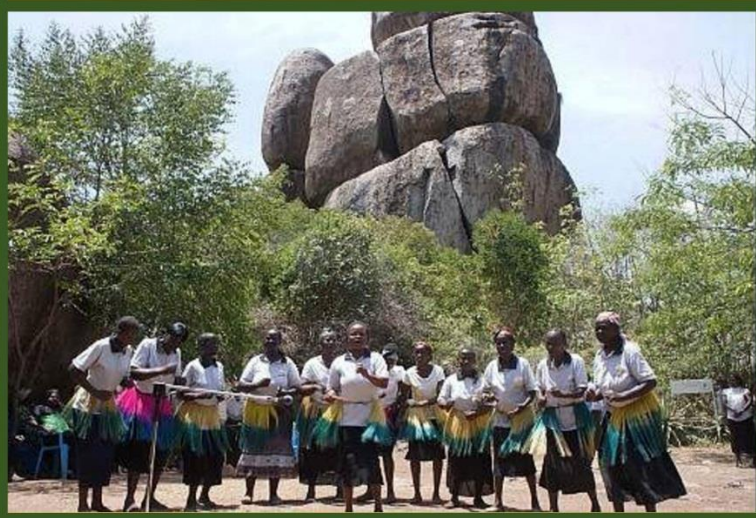




NATIONAL SPATIAL PLAN GUIDELINES FOR KISUMU COUNTY

Optimal productivity, sustainability, efficiency and equity in
use of our land and territorial space



©JUNE 2022

MINISTRY OF LANDS AND PHYSICAL PLANNING
STATE DEPARTMENT FOR PHYSICAL PLANNING

FOREWORD

The Constitution of Kenya apportions responsibility of planning to both National and County Governments. Under the Fourth Schedule on distribution of functions, Part 1 (21) and (32) mandates the National Government with the responsibility of formulating general principles of land planning, co-ordination of planning by the Counties, capacity building and technical assistance to the Counties. On the other hand, Part 2(8) allocates the function of County planning and development to County Governments. It is under these provisions that the County specific guidelines have been prepared.

The Department of Physical Planning prepared the National Spatial Plan (NSP) in response to the Kenya Vision 2030 to guide the spatial development of the country over a period of 30 years beginning in 2015.

It aims at achieving an organized, integrated, sustainable and balanced development of the country by providing a framework for better national organization and linkages between different activities within the national space.

To implement the Plan, the Counties are expected to play a key role by mainstreaming strategies, policies, and measures identified in the NSP into the County spatial planning systems.

The guidelines have identified planning policies, strategies, and measures that Plans at the County level are expected to mainstream and propagate. The policies address among others, the protection of rich agricultural land, development imbalances, conservation of environmentally sensitive areas, urban containment, and promotion of industrial development.

The guidelines provide direction on the existing potentials, the opportunities, the constraints/challenges inhibiting harnessing of the potentials, the strategies to apply, respective policies required, and the necessary measures to achieve optimal productivity, sustainability, efficiency and equity in the use of county land resources.

The guidelines are an opportunity on how best to refocus, vary and complement areas that require different approaches responding to country-specific needs and promote the livelihoods of their people, while contributing to the national aspirations of vision 2030, regional objectives of the Africa Agenda 2063, and international targets of sustainable development. The refocusing will also be handy in reviewing and making decisions on NSP which is due for review in 2025.

These guidelines are therefore a tool for enhancing this critical path and provide a direction for development planning by the Counties as they discharge their responsibility of preparing county and local physical and land use development plans. The guidelines will also ensure that the County Integrated Development Plans conform to the proposed County specific policy guidelines and measures.

DRAFT

PREFACE

The National Spatial Plan(NSP) recognizes that Kenya is greatly endowed with massive and diverse resources distributed over the national space that require an integrated and coordinated approach for optimal productivity and sustainability.

The County Specific Guidelines have been derived from the National Spatial Plan and provide a planning framework for the integration of the NSP into the county spatial planning system. They are clear statements linking the National Spatial Plan to Inter-County, County and lower-level Physical and Land Use Development Plans and provide clarification on the anticipated sustainable development outcomes of implementing the Plan.

The County Government will adopt, develop and implement their plans based on the policies, strategies, and measures articulated in the guidelines. The realized county plans are expected to guide, harmonize and facilitate development within the county, hence contributing to the overall implementation of the NSP.

The guidelines also form an efficient compass and monitoring tool for National and County Governments to jointly pursue sustainable planning and appropriate implementation mechanisms.

For the county to be nationally competitive, there is need to balance development and promote optimal utilization of land and land-based resources as well as cultivate an integrated approach in addressing the intertwined challenges of regional imbalances/inequalities, rural development, underutilization of the available resources, uncontrolled urbanization, environmental degradation and inefficient transportation. It is imperative therefore, to prioritize the implementation of this strategic document so as to promote balanced development and competitiveness across the county

EXECUTIVE SUMMARY

The County Specific Guidelines seek to facilitate the implementation of the National Spatial Plan by outlining policies, strategies and measures to guide County spatial planning and development and promote optimal productivity, sustainability, efficiency and equity in the use of land. They provide a framework for preparation of lower level Plans including Inter-County, County and Local Physical and Land Use Development Plans.

The disconnect between National and County Spatial Planning and development has resulted in uncoordinated and unbalanced development, therefore creating a need for a clear structure that links National, Regional and Local planning and development. This is achievable through integration of the policies, strategies and measures proposed by the guidelines into County Spatial Plans, Programs and Projects, to tackle challenges of unbalanced regional development, urbanization, national competitiveness and unsustainable use of land and natural resources.

The County Specific Guidelines are organized into five chapters detailing various facets. Chapter one provides an overview, purpose and justification of preparation of the guidelines. It also outlines the objectives that the guidelines intend to achieve and details the preparation process as well as intended users. This chapter highlights the key principles that form the basis for preparation of lower level plans including public participation, liveability, sustainable development, urban containment, smart urban growth among others.

Chapter two details the legal and policy provisions that the guidelines are anchored upon. They include, among others, The Constitution of Kenya, 2010, The Physical and Land Use Planning Act No.13 of 2019, County Government Act, 2012, Environmental Management and Coordination (Amendment) Act, 2015, Sessional Paper No. 01 of 2017 on National Land Use Policy and Sessional Paper No. 10 of 2012 on Kenya Vision 2030.

The third chapter analyses the county profile, detailing its location, size, bio-physical characteristics, socioeconomic status and the County's comparative advantage in

relation to others. The locational context provides information on the geographical position and bordering Counties while the biophysical context discusses the topography, hydrology and climate. The socioeconomic status indicates key economic drivers of the County and its population and demographic structure.

Chapter four presents the County specific issues and proposes development strategies to promote national competitiveness, optimal use of land and resources, rural development, balanced intra-county development and urbanization. Additionally, it provides policy guidelines and measures for County advancement.

The final chapter five focuses on implementation and adoption of the guidelines. The implementation framework identifies institutions, County development programs and projects, and further ties them with responsible actors, resources and timeframes for effective execution. It proposes a framework for ensuring that the outlined policies, strategies and measures are adequately implemented.

DRAFT

Contents

PREFACE.....	iv
1 INTRODUCTION.....	10
1.1 Background.....	10
1.2 Purpose.....	10
1.3 Objectives.....	11
1.4 Scope.....	11
1.5 Justification.....	12
1.6 Application of the Guidelines.....	13
1.7 Process of preparing the Guidelines.....	13
1.8 Targeted users of the Guidelines.....	14
1.9 Key Principles.....	16
2 THE POLICY, LEGAL AND PLANNING FRAMEWORK FOR THE GUIDELINES.....	17
2.1 Constitutional context.....	17
2.2 Policy Context.....	17
2.2.1 Sessional Paper No. 10 of 2012 on Kenya Vision 2030.....	17
2.2.2 Sessional Paper No. 01 of 2017 on National Land Use Policy.....	17
2.3 Legal context.....	18
2.3.1 The Physical and Land Use Planning Act No. 13 of 2019.....	18
2.3.2 County Governments Act, 2012.....	18
2.3.3 Urban Areas and Cities (Amendment) Act, 2019.....	18
2.3.4 Environmental Management and Coordination (Amendment) Act, 2015.....	18
2.3.5 National Land Commission Act, 2012.....	19
2.4 Planning Context.....	19
2.4.1 National Spatial Plan (NSP).....	19
2.4.2 NSP linkage to other plans.....	20
3 County profile.....	22
3.1 Overview.....	22
3.2 Location and Size.....	22
3.3 Physical and Physiographical Features.....	24
3.4 Climatic conditions.....	24
3.5 Forests.....	24
3.6 Socio Economic Characteristics.....	24

3.6.1	Population	24
3.6.2	Agriculture.....	25
3.6.3	Tourism.....	25
3.6.4	Industry	26
3.6.5	Mining	26
3.7	Infrastructure	27
3.7.1	Transportation	27
3.7.2	Energy	27
3.7.3	Water resources.....	28
3.8	The County’s Comparative Advantage.....	30
4	DEVELOPMENT STRATEGIES AND POLICY GUIDELINES FOR KISUMU CITY	31
4.1	County Specific Issues and Development strategies	31
4.2	National Spatial Plan Policy Guidelines and Measures for Kisumu County.....	51
5	IMPLEMENTATION AND ADOPTION OF THE GUIDELINES.....	77
5.1	Overview.....	77
5.2	Implementation Approaches	77
5.3	Implementation Framework.....	78
5.3.1	County Physical Planning Committee.....	78
5.3.2	County Planning Unit (CPU).....	79
5.3.3	National Land Commission	79
5.4	Monitoring and Evaluation	80
5.5	Conclusion.....	81

List of Tables

Table 1: Targeted Users of the Guidelines	14
Table 2: Population Projection to the year 2045.....	25
Table 3: County Specific Issues and Development strategies	32
Table 4: National Spatial Plan Policy Guidelines.....	52

List of figures

Figure 1: The Scope of the Guidelines.....12
Figure 2: Policy Focus of the NSP19
Figure 3: NSP Linkage to other Plans21
Figure 4: Implementation structure of the guidelines80

List of Maps

Map 1: Location Context of Kisumu County 23
Map 2: The existing situation on Kisumu County 29
Map 3: NSP Proposals for Kisumu County 76

DRAFT

1

1 INTRODUCTION

1.1 Background

The County Guidelines set out policies, strategies and measures that will guide the long-term spatial development of the county for a period of 30 years. They cover the entire county and defines the general trend and direction of its spatial development.

The guidelines have been developed in line with the four thematic areas as outlined in the NSP. They provide a guide to the Planning Authority at the county on how to incorporate the NSP policies, strategies and measures during the preparation of County Spatial Plans and other lower level plans like the Local Physical and Land Use Development Plans consequently implementing the NSP.

The NSP County Specific implementation guidelines summarize the County's existing potentials and opportunities, the constraints (challenges) inhibiting harnessing of the potentials, the applicable strategies and respective policies required, and the necessary measures to achieve optimal productivity, sustainability, efficiency and equity in the use of the county land resources. They act as a reference point

1.2 Purpose

The purpose of the County Specific Guidelines is to provide a planning framework for mainstreaming of the National Spatial Plan to the County spatial planning system.

The guidelines are intended to assist the County enhance the implementation of the NSP by linking the proposed county specific policies, strategies and measures into the County plans, programs and projects while putting measures in place for achieving them. The guidelines inform preparation of various County Physical Plans such as the County Physical and Land Use Development Plans.

For optimal implementation of these plans, a County Integrated Development Plan (CIDP) is essential since it is a sectoral and budgetary based plan that draws its implementation programs and projects from the County Physical Plans.

1.3 Objectives

The guidelines provide policies, strategies and measures to deal with challenges of regional imbalances/inequalities, rural development, underutilization of the available resources, urbanization, environmental degradation and inefficient transportation.

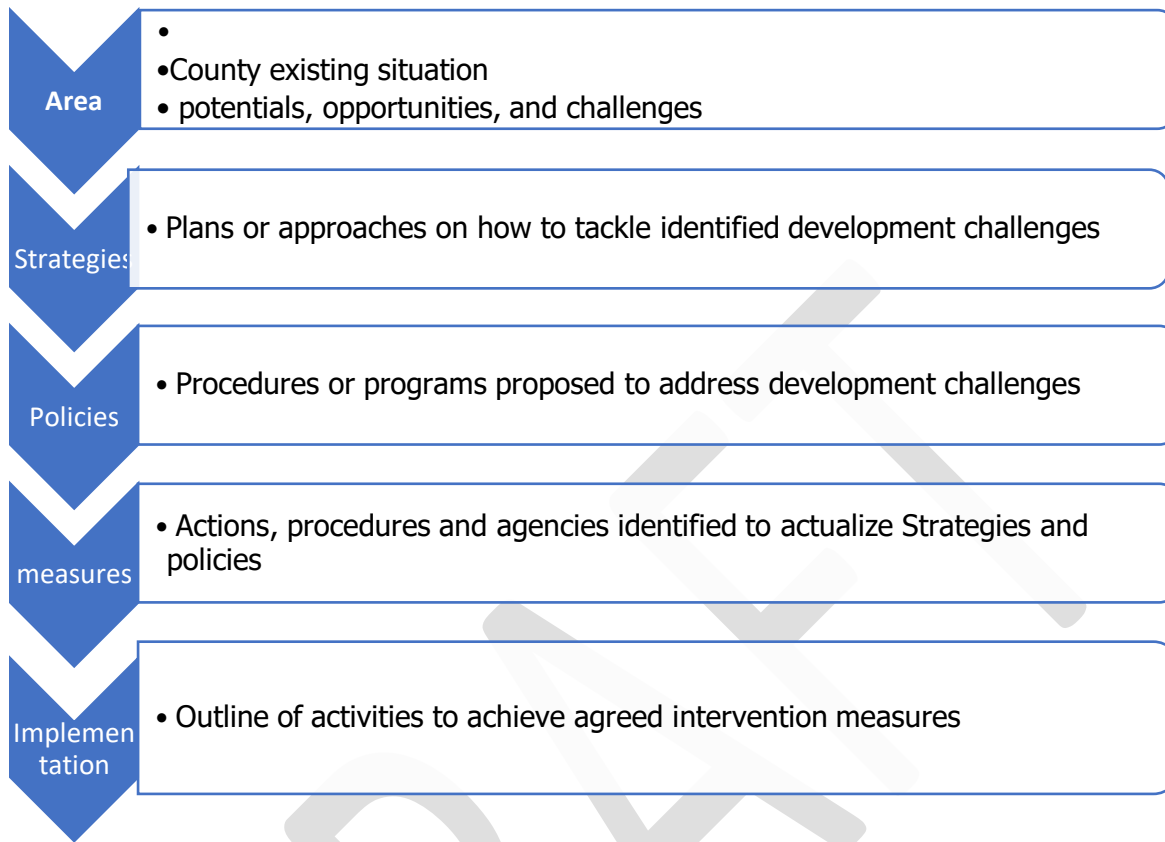
Specifically, the objectives are;

1. To sensitize the County on the provisions of the NSP
2. To promote synergy between National and County planning
3. To guide the County, implement the NSP
4. To identify the roles of the different actors in the implementation of the NSP.

1.4 Scope

The guidelines comprise policies, strategies and measures specific to Kisumu County covering approximately 567 km² on water and 2086 km² on land cover. The guidelines highlight the County's existing potentials and opportunities, the constraints (challenges) inhibiting harnessing of the potentials, the applicable strategies and respective policies required, and the necessary measures, actions, approaches, plans and procedures prescribed to achieve optimal productivity, sustainability, efficiency and equity in the use of the county's land resources and an outline of activities to execute agreed interventions as captured in the National Spatial Plan, as indicated in Figure 1 below. These guidelines are effective up to the year 2045.

Figure 1: The Scope of the Guidelines



Source: State Department for Physical Planning, 2022

1.5 Justification

Since the approval and launch of the NSP, its implementation has been undertaken in an uncoordinated manner hence the guidelines will provide a standardized approach for all Counties. The guidelines are also an important tool for tracking and evaluating implementation of the NSP both at National and County levels.

The preparation of County Spatial Plans and other lower-level plans which is a mandate of Counties has been slow and, in some Counties, has not begun at all. These guidelines are therefore a quick reference in preparation of county plans and for some Counties to help optimize land in the absence of these plans.

1.6 Application of the Guidelines

The guidelines will be used or applied in the following ways to achieve a more sustained and coordinated development of the County;

- To effectively coordinate planning between the National and the County Government;
- To improve the County Government's capacity to formulate, coordinate and implement integrated development policies, strategies, measures, programs and projects to address spatially unbalanced development;
- To inform strategic infrastructure policy and public investment decisions which support the achievement of balanced development in the County;
- To strengthen County inter-sectoral coordination within a spatial framework and provide the private sector with a clear context in which they can make investment decisions;
- To optimize the use of land and natural resources by providing a framework for making sustainable locational choices for sustainable development and conservation of land productivity in the County.

1.7 Process of preparing the Guidelines

The process involved reviewing the National Spatial Plan and identifying key issues, spatial policies, development strategies and measures specific to Kisumu County. These key issues, spatial policies, development strategies and measures will be realized through preparation of County and other lower-level plans.

Research was undertaken on various thematic areas to enrich the County specific issues and development strategies as well as policy guidelines and measures/ interventions. Further, preparation of the guidelines considered the constitutional, policy and legal provisions on physical and land use planning. Expert opinion was sought on the identified issues, policies, measures and strategies for implementation viability.

The preparation of the guidelines was identified as one of the implementation tools of the NSP, in which key NSP issues, policies, strategies and measures were translated into specific action plans, programs and projects at the County level.

1.8 Targeted users of the Guidelines

These Guidelines have diverse consumers and application depending on prevailing circumstances and actors as demonstrated in Table 1 below:

Table 1: Targeted Users of the Guidelines

User	Application
County Executive Committee Member in charge of Physical and Land Use Planning	<ul style="list-style-type: none"> • Preparation of county and lower-level plans • Linkage of planning structures • Quality control of the various county plans • Formulate county planning policies and strategies • Establish county specific planning institutions • Coordinate and implement county plans and policies
The County Director of Physical and Land Use planning	<ul style="list-style-type: none"> • Advising the county government on the impact of the county specific guidelines to the county • Preparation of County physical and land use development plans and other lower level plans • Formulating County physical and land use planning policies, guidelines, strategies, and standards; • Issuance of development permission and other development control instruments under The Physical and Land Use Planning Act, 2013.
Licensed physical and land use planners both in public and private sectors	<ul style="list-style-type: none"> • Prepare, coordinate and implement spatial plans • Quality control of plans and consultancy services • Formulate policies, strategies and development guidelines • Dispute resolution

County assembly	<ul style="list-style-type: none"> • Approval of strategic sectoral budgets such as planning • Vetting of various County specific plans • Formulation and passing of County planning legislation • Enhance capacity to oversee the executive on spatial planning
Ministries, Departments and Agencies	<ul style="list-style-type: none"> • Mainstreaming relevant NSP policies, programs and projects • Allocation of resources to priority areas, • Strengthening linkages with spatial planning in resource management
The National Land Commission (NLC)	<ul style="list-style-type: none"> • Oversight role in land use planning to ensure efficient implementation of the NSP • Ensure relevant planning authorities carry out their functions as required by the law
Practitioners in the built environment	<ul style="list-style-type: none"> • Advance NSP relevant policies, programs and projects hence optimization of land resource • Appreciate sectoral Linkages to spatial planning • Facilitate incorporation of the policies, strategies and measures into, County specific plans
Community, developers and investors	<ul style="list-style-type: none"> • Comprehend the County priority sectors and County Plans and policies • Complement County spatial planning and implementation measures • Making informed investment decisions
Development partners	<ul style="list-style-type: none"> • Reference frame for selecting and funding spatial planning activities • Understand planning linkages and implementation • Informed development decisions
Training institutions	<ul style="list-style-type: none"> • Compliment the curriculum for training of spatial planners • Understand the planning procedures and processes

1.9 Key Principles

The principles, as applied in the NSP, should guide and form the basis upon which the lower-level physical and land use plans are prepared. Further the principles should ensure sustainable, coordinated, and realistic development. They include the following:

- 1. Effective Public participation/engagement:** All plans shall be prepared in a participatory and consultative manner with relevant stakeholders and sectoral actors.
- 2. Urban containment/Compact cities:** Local plans shall strive to limit and control urban growth within the set urban boundaries to protect rich agricultural land, mitigate urban sprawl and reduce cost of infrastructural provision.
- 3. Livability:** The planning of urban areas shall enhance the livability index in the area of housing, environment, transportation, health, and social engagement. The urban areas must be economically viable, socially inclusive and ecologically sustainable.
- 4. Smart and green urban growth:** Plans shall promote sustainable use of energy, creation of green spaces, reduce the need for car travel, and promote use of local materials, support businesses, protection of heritage and creation of unique character.
- 5. Sustainable development:** Balancing social, economic and environmental dimensions of development and catering for current and future generations.
- 6. Promotion of ecological integrity:** Plans shall promote the protection and conservation of environmentally sensitive areas.
- 7. Promote public transportation:** Favor public transportation over private transport to ensure efficiency and functionality of urban places.
- 8. Balanced development:** Plans to ensure there/ is balanced development in the County to cure inequalities.

2 THE POLICY, LEGAL AND PLANNING FRAMEWORK FOR THE GUIDELINES

2.1 Constitutional context

The formulation of these guidelines took into account the Constitution of Kenya 2010 aspirations and Principles. Article 66 of the Constitution of Kenya 2010 gives the State powers to regulate use of any land and property in the interest of land use planning among others. The guidelines are therefore within and in response to the aspirations, values and principles as provided for in the constitution.

2.2 Policy Context

2.2.1 Sessional Paper No. 10 of 2012 on Kenya Vision 2030

Kenya Vision 2030 is the overarching national development framework which all plans should be aligned to. The preparation of all spatial plans should take cognizance of the aspirations, foundations and development concepts of the vision. The preparation of the first National Spatial Plan is identified in Kenya Vision 2030 as a flagship project and is regarded as one of the foundations for socio-economic transformation. Hence the need for linkage between national planning and county planning which will be achieved through mainstreaming NSP requirements into CSPs and other lower-level plans by preparing NSP county specific guidelines to implement the NSP at lower levels.

2.2.2 Sessional Paper No. 01 of 2017 on National Land Use Policy

The policy was formulated to address the various challenges related to land use and ensure efficient, productive and sustainable use of land. The main goal of the policy is to provide legal, administrative, institutional and technological framework for optimal utilization and productivity of land related resources in a sustainable and desirable manner at national, County and community levels.

The policy recommends the preparation of a National Spatial Plan to provide an integrated framework for the development of the country including guidelines for sustainable rural and urban planning management. The policy also provides for the preparation of planning guidelines, policies and standards to be observed by County Governments and other sectoral agencies within the frameworks of approved physical and land use development

plans. These guidelines have been prepared on this basis and they are to be observed by counties in the implementation of the National Spatial Plan.

2.3 Legal context

Various Acts of Parliament are in place to provide the legal framework for the implementation of the mandate provided for in Article 66 of the Constitution. The Physical and Land Use Planning Act, 2019, The Urban Areas and Cities (Amendment) Act, 2019, County Governments Act No. 17 of 2012, The Land Act No. 6 of 2012, National Land Commission Act No. 5 of 2012 among others. The NSP County specific guidelines are prepared in this context and meet this criterion.

2.3.1 The Physical and Land Use Planning Act No. 13 of 2019

This is the overarching statute that provides for formulation of both National and County physical and land use planning policies, guidelines and standards. The Act further provides for administration, types, content, process and approval of the various types of Physical and Land Use Development Plans.

2.3.2 County Governments Act, 2012

This statute mandates County Governments to carry out the planning function at the county level. The guidelines support preparation of the various county level plans that meet the recommended quality and standards.

2.3.3 Urban Areas and Cities (Amendment) Act, 2019

The statute provides for classification of urban areas and cities, their governance and management, and for integrated development planning. The guidelines are a basis for preparation of these lower-level plans.

2.3.4 Environmental Management and Coordination (Amendment) Act, 2015

The Act provides for the establishment of an appropriate legal and institutional framework for the management of the environment as well as guidelines relating to environmental management and prevention or abatement of environmental degradation. The guidelines take cognizance of this Act and will be implemented within the framework

2.3.5 National Land Commission Act, 2012

The Act mandates the National Land Commission with the management and administration of public land on behalf of the National and County Governments and to monitor and oversight physical and lands use planning in the country. The guidelines fall within the ambit of this statute and will facilitate their oversight responsibilities.

2.4 Planning Context

2.4.1 National Spatial Plan (NSP)

The National Spatial Plan (NSP) covers the whole country encompassing the exclusive economic zone. The NSP outlines policies and strategies geared towards influencing desired future distribution and organization of human activity outlined in Vision 2030 and sectoral policies and plans. It aims at achieving economic efficiency and balanced development. The various County Spatial Plans should be aligned to the policies outlined in the NSP as demonstrated in Figure 2 below.

Figure 2: Policy Focus of the NSP



Source: National Spatial Plan, 2015-2045

To actualize the NSP, a comprehensive implementation strategy has been proposed that embraces a multiplicity of actors including National Government Ministries, Departments

and Agencies, County Governments and the National Land Commission. The strategy proposes the establishment of the following institutions as key in the implementation of the Plan; The National Physical Planning Council, the National Technical Committee and the County Physical Planning Committee.

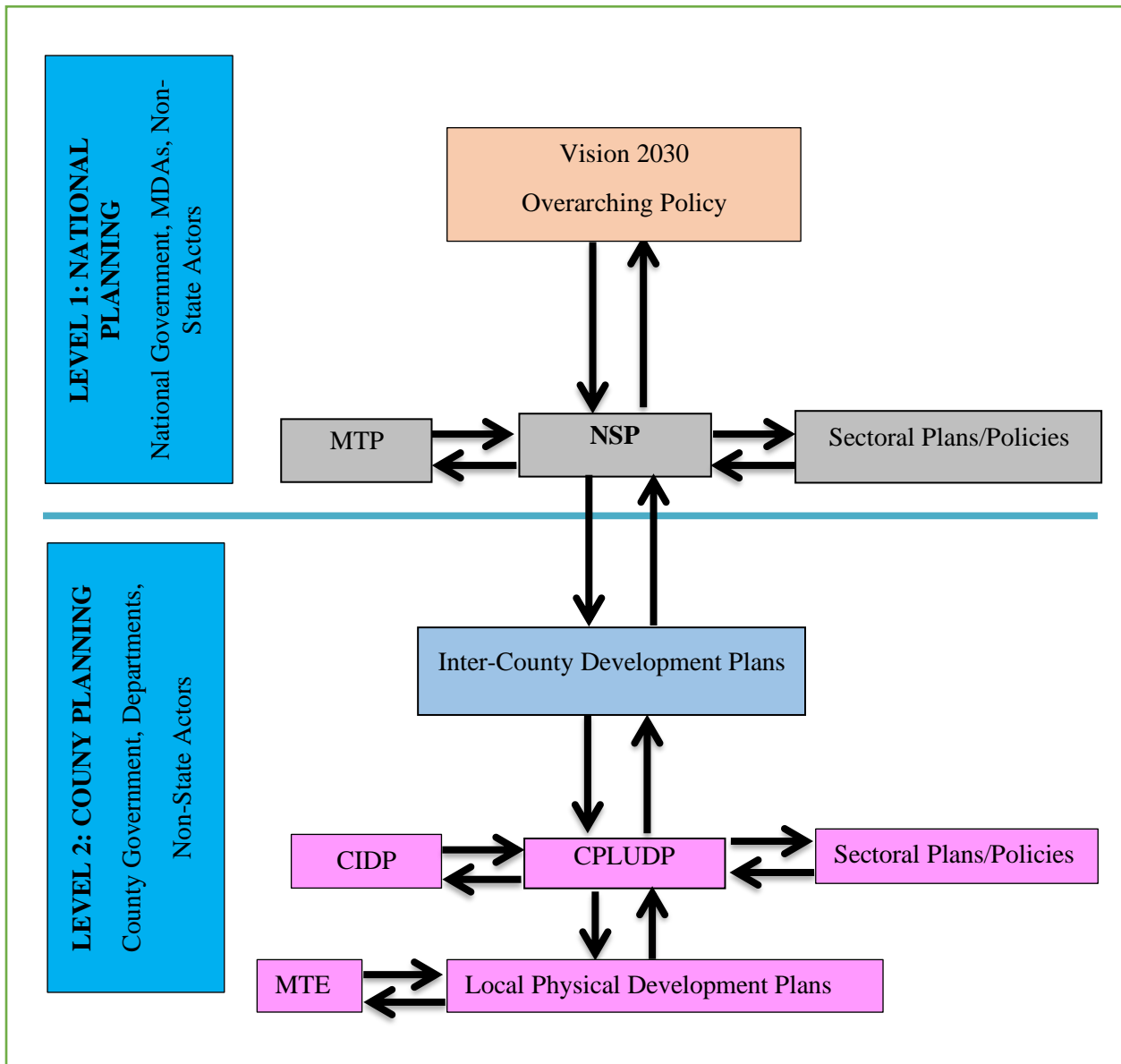
2.4.2 NSP linkage to other plans

The linkage of the National Spatial Plan (NSP) to county and other lower-level plans is key to realization of its aspirations and the successful actualization of these plans. The NSP provides a spatial framework to ground the Vision 2030 flagships projects and form a basis for coordination of County policies, strategies, measures and plans.

Inter County and County plans take into considerations the policies, measures and strategies of the NSP and implements them actualizing its aspirations.

County Physical and Land Use Development Plans provide a framework where the CIDP draws its programs and projects. The implementation of the CIDP in turn leads to realization of the objectives of the County Physical and Land Use Development Plan.

Figure 3: NSP Linkage to other Plans



Source: The National Spatial Plan, 2015-2045

3 County profile

3.1 Overview

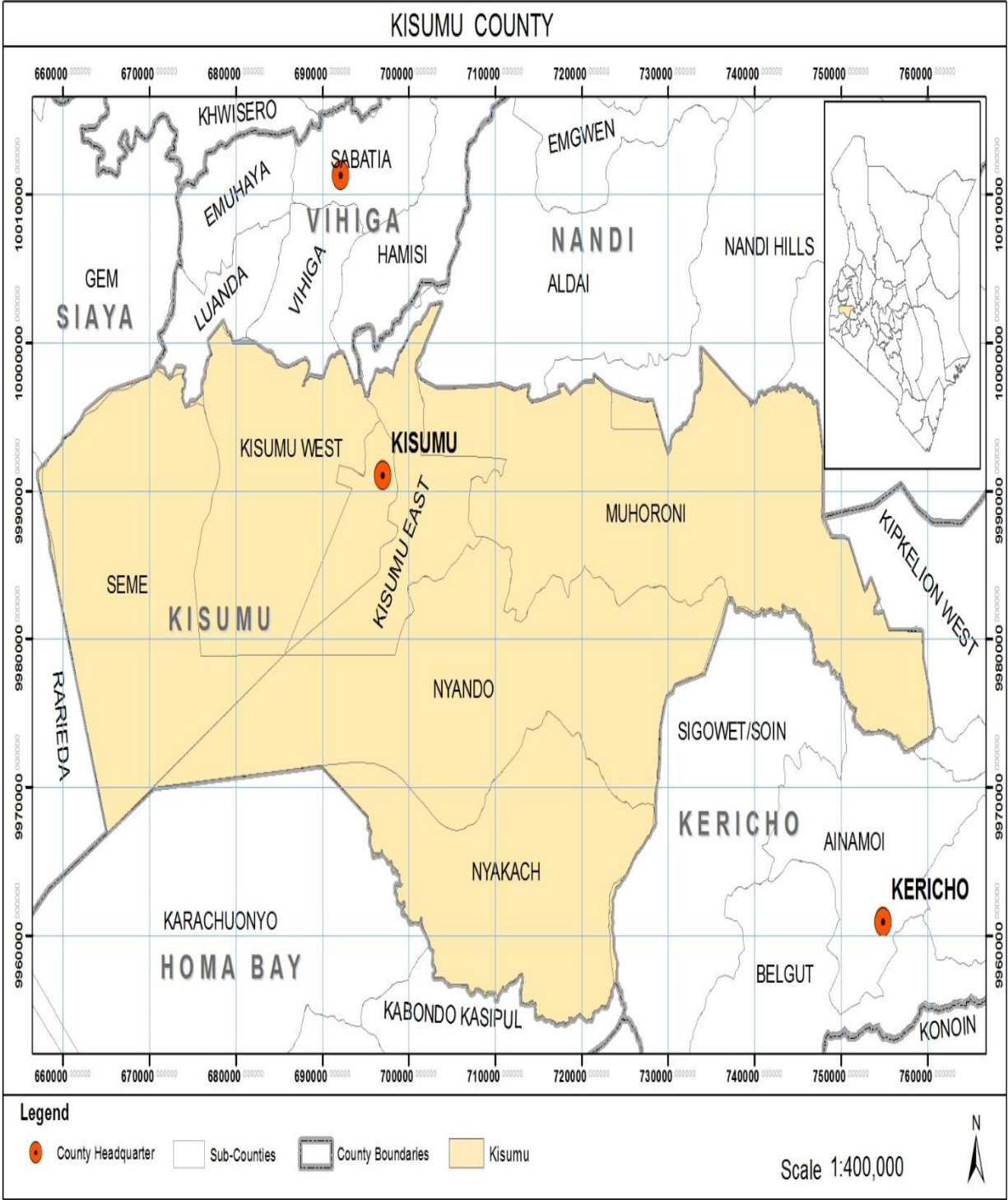
This chapter provides a description of the county in terms of the location and size, physiographic and natural conditions, demographic profile, socio-economic and infrastructural information.

3.2 Location and Size

The County borders Homa Bay County to the South, Nandi County to the North East, Kericho County to the East, Vihiga County to the North West, Siaya County to the West and surrounded by the second largest freshwater lake in the World Lake Victoria (The shoreline on Lake Victoria, occupies northern, western and a part of the southern shores of the Winam Gulf). Kisumu County is delineated as county number 42 and covers an area of approximately 567 km² on water and 2086km² land area.

Map 1 below shows the location of the County in national and regional context.

Map 1: Location Context of Kisumu County



Source: State Department to Physical Planning (2022)

3.3 Physical and Physiographical Features

The county lies in a down warped part of a large lowland surrounding the Winam Gulf, at the tip of which is Kisumu Town. East of Kisumu Town is the Kano Plains occasionally broken by low ridges and rivers.

The county can be divided into 3 topographical zones namely: The Kano Plains, the upland area of Nyabondo Plateau and the midland areas of Maseno.

There are three major rivers flowing into the Winam Gulf namely: The Nyando, Kibos and Sondu rivers. They are heavily silted, resulting in the extensive formation of lakeside swamps.

3.4 Climatic conditions

The county largely receives substantial rainfall distributed as follows; Maseno has a mean annual rainfall of 1,630mm, Kisumu 1,280 mm, Ahero 1,260 mm, Kibos 1,290 mm, Muhoroni 1,525 mm, and Koru 1,103 mm. The lowland area which forms a trough of low rainfall receives a mean annual rainfall of between 1,000mm and 1,800mm. The mean annual temperature ranges between 9°C to 35°C and is influenced by the altitude.

3.5 Forests

The county has got no gazetted forest and few existing ones are on hill tops of Fort Tenan and Songoh for the purposes of soil and water conservation.

3.6 Socio Economic Characteristics

3.6.1 Population

The population of Kisumu County from KNBS 2019 data was estimated at 1,155,551 (51.46% women and 48.54% men) It has an average household size of 3.8 and population density of 554 persons per square kilometer. By the end of the planning period, the population of Kisumu county is expected to be 2,252,275 persons.

Table 2: Population Projection to the year 2045

Year	2019	2020	2025	2030	2035	2040	2045
Population size	1,155,551	1,185,596	1,347,950	1,532,536	1,742,399	1,981,000	2,252,275
Male	2192452	575488	654295	743893	845760	961577	1093254
Female	2204376	610108	693655	788643	896639	1019423	1159021
Households	304,092	311,999	354,724	403,299	458,526	521,316	592,704
Area (km2)	2,085.40	2,085.40	2,085.40	2,085.40	2,085.40	2,085.40	2,085.40
Density	554	569	646	735	836	950	1080

Source: State Department of Physical Planning, 2022

3.6.2 Agriculture

The main crops grown for subsistence include beans, maize, sorghum, finger millet, potatoes, groundnuts, kales and cotton. The main cash crops in the county are sugarcane, rice and cotton. Sugarcane is predominantly grown at lower midlands which are common in Maseno, Muhoroni and Miwani while cotton is grown in Kadibo and Nyando.

The main livestock bred in the county include; dairy cattle, beef cattle, pigs, goats, sheep, poultry, rabbits and bee keeping. On the overall, 92.5 % of households' rear chicken, 47.3 % keep cattle, 38.7 % and 23.6 % keep goats and sheep respectively. The most common livestock kept in the large-scale commercial farms are dairy and beef cattle, goat and sheep and the county has no ranch.

Fishing is one of the key economic activities in Kisumu County which mainly takes place in Lake Victoria. With the advent of fish ponds, households are investing in the ponds and there are over 1,330 fish ponds in the county where farmers practice aquaculture. Fishing takes place mainly in Kaloka Beach, Ndere Island, Kisumu Port, Dunga Beach, Sango Beach and Kusa Beach.

3.6.3 Tourism

The county lies in the Western Kenya tourism circuit with tourist attractions sites around the lake. These include diversity of landscapes, wildlife, culture and the many historical

sites and suitable beaches along Lake Victoria that provide enormous potential for tourism growth in the region. The Ndere Island National Park in Seme Sub-county, the Kisumu Impala Sanctuary in Kisumu City and the National Museum in Kisumu. Historically, sites such as Songhor Paleontological Site situated in Muhoroni, the viewpoints in Nyabondo, the legendary Luanda Magere site in Miwani, Kit Mikayi in Kisumu West, recreational sailing and sport fishing on Lake Victoria provide attractive sites that need to be fully utilized.

The main wildlife in the county are silver backed jackals, leopards, baboons, ostriches, hyena, guinea fowls, duikers, lion, impalas, velvet monkeys, bird species, sitatungas, crocodiles, pythons (Omieri), monitor lizards, hippos, among others.

The tourist class hotels in the county are mainly found in Kisumu City. These include; Kisumu Hotel, Sunset Hotel, Imperial hotel, Jumua Guest House, Great Lakes Hotel, Lasavana Hotel. However, the hotel industry is a fast-growing venture in the county with hotels and guest houses coming up in other parts of the county.

3.6.4 Industry

The county has a total of 27 manufacturing industries, 16 bakeries, 12 *Jua-kali* association and 10,500 *Jua-kali* artisans. There exist various industrial activities including; fish processing industries (main economy), sugar industries like Muhoroni, Chemilil, Kibos and rice irrigation industries; Equator Bottlers, Jumbo mattresses in Ahero; Foam mattresses in Kisumu town.

3.6.5 Mining

Quarrying and sand harvesting are the main mining activities in the county with building sand harvesting concentrated along river banks of Nyando and Awach. Quarrying activities that are ongoing include crushing of granite rock deposits at various parts of the county for production of ballast used in the housing and roads construction industries. Other activities include limestone mining by Homa Lime Company for lime production.

The granite rocks are exploited (in small scale) by the local population to produce building ballast. While the varying types of soils and rivers deposits are mined for building sand and baked bricks for building in Maseno and Nyakach. The county also has potentials for deposits of limestone that can be mined and used in the production of cement and oil potential in Nyakach and Nyando Sub-counties that can be exploited.

3.7 Infrastructure

3.7.1 Transportation

The county is traversed by the main trunk road (B1) linking Nairobi to Kampala, Uganda through Busia. There is also an important road (A1) that links Kisumu to Tanzania through Kisii. An alternative route to Tanzania from Kisumu is through Homa Bay. Besides these major highways, there are several bitumen surface (tarmac) roads linking the county to Western Kenya towns like Kakamega, Nandi Hill, Kapsabet, Eldoret, Bungoma and Kitale among others.

The county has Kisumu International Airport that was recently improved and upgraded to international standards. The airport is the busiest airport in Western Kenya and the third busiest airport in the country. It handles over 10 flights daily including scheduled, chartered and non-scheduled arrivals and departures.

The county has a railway line and Station which used to handle cargo, with connections to the EAC market through the Kisumu pier was closed due to lack of profits and now dysfunctional.

The Kisumu Port has been challenged with the problems water hyacinth, the port has become a low business zone with ships cancelling deliveries to the port on several occasions.

3.7.2 Energy

The main source of energy for cooking in Kisumu County is firewood which accounts for 60 % of all energy sources and for lighting, paraffin is the most commonly used source

of energy in the county accounting for 79.3% of all energy sources followed by electricity at 18.3 %.

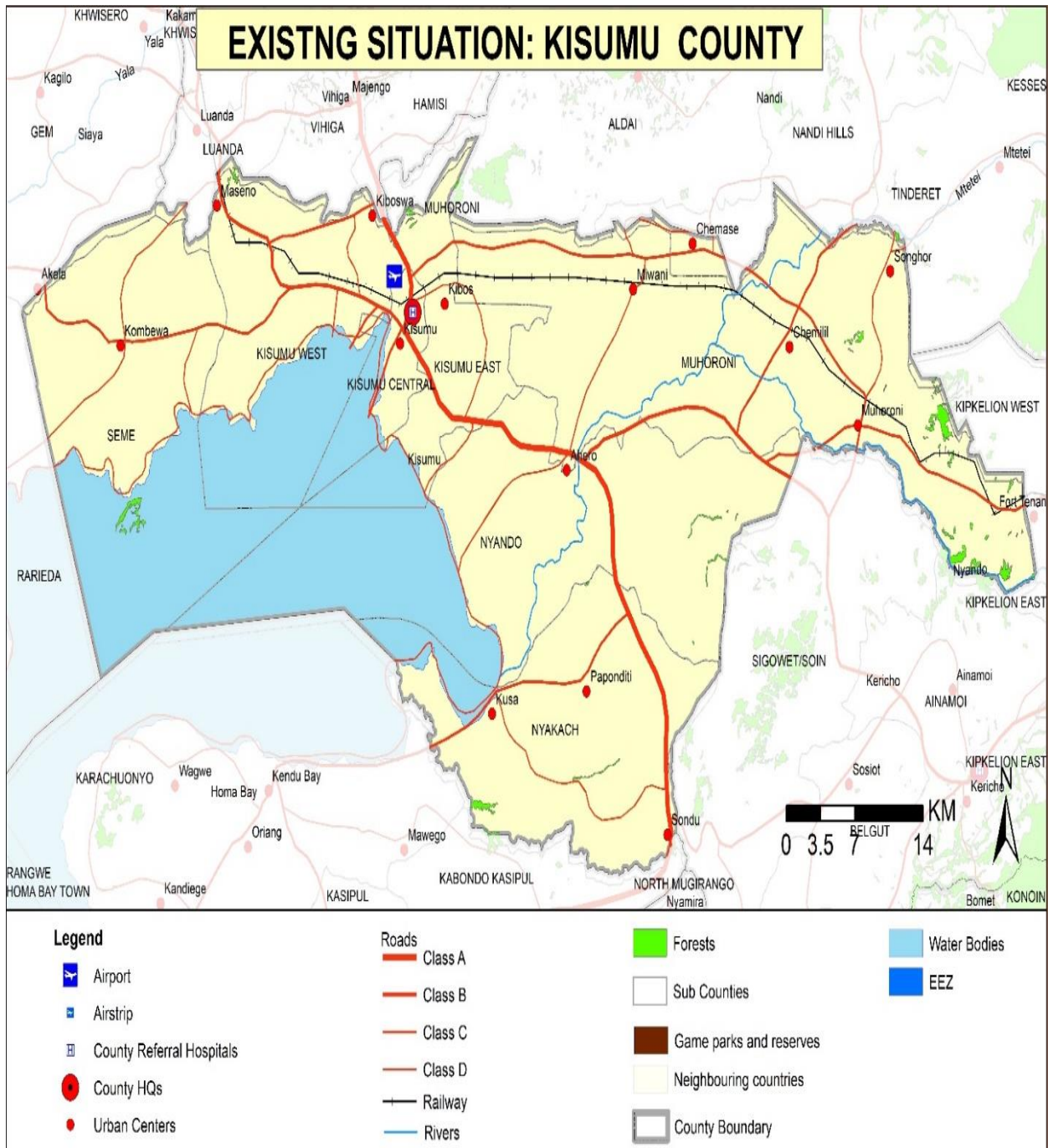
3.7.3 Water resources

The water sources in the county are; Lake Victoria, shallow wells, unprotected springs, waterpans, dam, boreholes and roof catchment systems. The county has a total of 11 permanent rivers and 212 boreholes.

Map 2 below shows the existing situation in Kisumu County.

DRAFT

Map 2: The existing situation on Kisumu County



Source: The State Department of Physical Planning (2019)

3.8 The County's Comparative Advantage

- The County's strategic position serves as a gateway for Kenya into the rest of the African Great Lakes region.
- It is located on the shores of Lake Victoria and serves as the main commercial and transport hub for the Western part of Kenya and the East African region.
- The county boasts of a fairly well-developed transport system of road, air, rail, pipeline water and an inland port. It is connected with class A and B road connecting to Uganda and Tanzania and other places, Kisumu international airport (connecting the county internationally and inland port, railway to Uganda (proposed Standard Gauge Railway).
- Presence of Muhoroni and Miwani sugar companies (agro-processing industries) which process and package sugar for sale in large quantities.
- Numerous tourist attraction sites and well-developed tourist hotels
- Kisumu City acts as the gateway to the East Africa Community and is proposed regional bloc headquarters for EAC.
- Availability of plenty of water sources including Lake Victoria.

4 DEVELOPMENT STRATEGIES AND POLICY GUIDELINES FOR KISUMU CITY

4.1 County Specific Issues and Development strategies

The National Spatial Plan provides strategies for spatial growth and development across the country. The strategies are aimed at providing a spatial expression to Kenya Vision 2030 and other sector policies.

This section seeks to provide strategies for spatial growth and development of the county by addressing the factors that prevent the county from achieving the intended goals and objectives. The development strategies discussed are aimed at managing the global impacts, optimizing use of natural resources, creating a county balance and transforming rural areas. Specifically, the development strategies have been proposed to address the following aspects of the county's development agenda;

- Enhancing the global/national competitiveness
- Optimal use of land and other resources
- Balanced county development
- Rural development in the county
- Urbanization

The following are detailed NSP sector-specific issues and strategies that apply to Kisumu County.

Table 3: County Specific Issues and Development strategies

Sector	Potential	Issues	Strategy
Enhancing Global/National Impacts			
Trade liberalization and open global market for goods and services	<ul style="list-style-type: none"> ➤ Availability of raw materials including minerals and agricultural products ➤ Availability of alternative energy sources like solar ➤ Presence of efficient transport networks (water, air, railway and road)-Class A and B International roads and Kisumu international airport 	<ul style="list-style-type: none"> ➤ High cost of production occasioned by high cost of energy, inefficient transport system, outdated technology and bureaucracy. ➤ Low quality of products and services 	<ul style="list-style-type: none"> ➤ Harness the renewable and green energy sources to increase the energy capacity and reduce the cost ➤ Embrace value addition to improve the quality of county products
Open movement for capital	<ul style="list-style-type: none"> ➤ Location and investment destinations which offer high return on investment at relatively low costs in Kisumu city ➤ Emergence of several trading centres 	<ul style="list-style-type: none"> ➤ Low level of investment in Kisumu ➤ Poor governance 	<ul style="list-style-type: none"> ➤ Locate export oriented industrial and manufacturing activities in Kisumu to leverage on their transportation ➤ Encourage locations of resource-based industries where resources are located
Increased reliance on knowledge workers to drive the economy.	<ul style="list-style-type: none"> ➤ Location and destinations of Kisumu which already offers a favourable atmosphere for knowledge workers ➤ Presence of various institutions dealing with knowledge development. 	<ul style="list-style-type: none"> ➤ Lack of a conducive environment for the workers and their families in the form of payments, facilities, housing, transport and safety 	<ul style="list-style-type: none"> ➤ Address housing, urban facilities, transportation, safety challenges to encourage knowledge workers and their families to locate to Kisumu city and other complementary growth nodes at county level

Economic integration and specialization	<ul style="list-style-type: none"> ➤ Kisumu County is the gateway to the East Africa Community and is proposed for regional bloc headquarters for EAC and some of its meetings are already taking place in the region ➤ Presence of Kisumu international airport for Horticulture and service i.e. tourism Financing 	<ul style="list-style-type: none"> ➤ Insufficient economic integration in the existing blocks. ➤ Insufficient specialization in areas where the county has comparative advantages 	<ul style="list-style-type: none"> ➤ Encourage cooperation in planning within East Africa Community to leverage on economies of scale arising from integration. ➤ Strengthen horticultural and service industries especially tourism to leverage on comparative advantage ➤ Defined specialization –adopt clusters (Lake region economic bloc), special economic zones, industrial parks etc. ➤ Promote blue economy through exploitation of Lake water masses
Tendency of FDIs to be attracted to counties with steady economic growth	<ul style="list-style-type: none"> ➤ Optimize the existing potentials in the county including lake and land resources, tourism attraction sites, good transport connectivity including road, air, water and rail among others 	<ul style="list-style-type: none"> ➤ Fluctuating economic growth occasioned by local and international factors. 	<ul style="list-style-type: none"> ➤ Optimize resource exploitation especially in marginalized regions
Emergence of knowledge, technology and innovation driven economies	<ul style="list-style-type: none"> ➤ Rich human resource base ➤ Strategic Location and destinations of Kisumu town ➤ Some sectors that have already embraced ICT and innovation ➤ Presence of global ICT leading institutions in the county 	<ul style="list-style-type: none"> ➤ Insufficient embrace and transition to knowledge, technology and innovation-based economies 	<ul style="list-style-type: none"> ➤ Encourage the emergence of ICT locations, Research oriented institutions in the county ➤ Encourage the location of universities in outlying areas in the county to stimulate balanced growth
Optimizing Use of Land and Natural Resources			
Sector	opportunity	constraints	strategies

Agriculture	<ul style="list-style-type: none"> ➤ Existence of different agro ecological zones that favors different agricultural activities including sugar cane plantation, rice, cotton growing, fishing activities, rice growing among others. ➤ Availability of water resources; Lake Victoria, rivers (Kibos, Nyando and Sondu) for irrigation of crops especially rice in Kano plains ➤ Availability of natural fish in Lake Victoria ➤ Well-connected transport network(road, air, water and rail) 	<ul style="list-style-type: none"> ➤ Low uptake of appropriate technology and skills to produce, process, preserve and market agricultural products ➤ Lack of markets skills amongst the farmers and the business community ➤ Poor infrastructure and inadequate agricultural support infrastructure ➤ Use of inappropriate farm inputs and technology; ➤ High cost farm inputs ➤ Negative attitude of youth towards farming as a source of livelihood ➤ Unpredictable weather conditions ➤ Diminishing fish stock in the lake and re-ceding water levels ➤ Pollution of lake with water hyacinth ➤ Weak implementation of laws especially on fishing where there is inadequate patrols by the fisheries officials on the lake ➤ Flooding especially in the Kano plains 	<ul style="list-style-type: none"> ➤ Provide subsidies to promote the use of appropriate farm inputs and technology ➤ Improve infrastructure in agricultural areas ➤ Enforce existing regulations on water pollution and regulate the abstraction of water ➤ Provide subsidies on fishing equipment and undertake research on the best fishing practices ➤ Control of fishing territories in the County ➤ Control water pollution and hyacinth ➤ Map, gazette and protect all important rivers and fishing grounds ➤ Control flooding especially in Kano plains
Environmental Conservation and Protection	<ul style="list-style-type: none"> ➤ wetlands, i.e. the Singida Wetland in Nyando; 	<ul style="list-style-type: none"> ➤ Soil erosion ➤ Low afforestation in the county; 	<ul style="list-style-type: none"> ➤ Strict soil erosion conservation measures

	<ul style="list-style-type: none"> ➤ Lake Victoria ➤ three major rivers flowing into the Winam Gulf namely: The Nyando, Kibos and Sondu. ➤ Springs ➤ forests 	<ul style="list-style-type: none"> ➤ Flooding ➤ River siltation ➤ Encroachment into wetlands ➤ Poor solid and liquid waste disposal; ➤ Water hyacinth menace ➤ Lack of enforcement of Environmental Act ➤ Uncontrolled Sand harvesting ➤ Hippo grass menace in Lake Victoria, ➤ Unplanned settlement 	<ul style="list-style-type: none"> ➤ Regulation of human settlements ➤ Flood mitigation measures put in place ➤ Intense forest cover through afforestation, reforestation and agroforestry especially on the hills ➤ Preservation and conservation of marine resources diversity ➤ Implementation of existing development plans ➤ Embrace modern farming methods ➤ Promote afforestation of hilltops, reforestation and agroforestry ➤ Rehabilitation of wetlands; ➤ Enforcement of EMCA
<p>Natural Resources-Rank 1(wetland &2(lakes and rivers)</p>	<ul style="list-style-type: none"> ➤ Existing natural resources- Minerals (limestone, granite and oil), suitable soils for brick making; Lake Victoria, Singida wetlands, Permanent Rivers, Ndere Island National park, wild life including hippos, crocodile, Sitatunga, silver backed jackals pythons-(Omieri) and beaches 	<ul style="list-style-type: none"> ➤ Underutilization of existing natural resources ➤ Inadequate technology and exploration infrastructure ➤ High costs of exploiting available natural resources ➤ Pollution of the air and water bodies 	<ul style="list-style-type: none"> ➤ Optimal utilization of the available natural resources ➤ Environmental conservation ➤ Invest in appropriate technology ➤ Strict soil erosion and flooding control measures

	<ul style="list-style-type: none"> ➤ Existing policy on management of natural resources 	<ul style="list-style-type: none"> ➤ Encroachment of human settlements onto the water bodies ➤ Deforestation ➤ Unsustainable abstraction of water ➤ Drying of water sources ➤ Human wildlife conflict (hippos) along the shores of Lake Victoria ➤ Pollution and destruction of wildlife marine ecosystem 	<ul style="list-style-type: none"> ➤ Undertake further exploration of the available natural resources. ➤ Strict regulation on exploitation of marine resources ➤ Control water abstraction ➤ Conservation and preservation of marine biodiversity ➤ Development not permitted in the wetland areas (Singida)
<p>Industries</p> <p><i>Urban based industries</i></p>	<ul style="list-style-type: none"> ➤ Existing raw materials ➤ Availability of labor ➤ Appropriate infrastructure ➤ Expansive land 	<ul style="list-style-type: none"> ➤ Inadequate supply of land for industrialization; ➤ Low investments in industry; ➤ High energy costs; ➤ Inadequate transport infrastructure 	<ul style="list-style-type: none"> ➤ Direct export market oriented industries to Kisumu ➤ Direct raw material oriented industries to rural growth centres and high agro-potential areas. ➤ Diversify energy production sources to reduce costs of production and enhance reliability ➤ Provide adequate infrastructure and utilities, skilled labor and favorable government policies ➤ Establish industrial parks
<p><i>Rural based industries</i></p>	<ul style="list-style-type: none"> ➤ Availability of water resources(Lake Victoria and 	<ul style="list-style-type: none"> ➤ Low adoption of technology for value addition. ➤ Poor linkage to markets 	<ul style="list-style-type: none"> ➤ Provide adequate, supportive transport and infrastructure

	<p>permanent rivers-Kibos, Sondu and Nyando)</p> <ul style="list-style-type: none"> ➤ Emerging growth centres Awasi, Ahero, Chemelil, Muhoroni, Katito among others 	<ul style="list-style-type: none"> ➤ Low uptake on value additions ➤ Low adaptation of technology for exploration and exploitation ➤ High energy costs ➤ Insufficient market for finished products ➤ Price fluctuation ➤ 	<ul style="list-style-type: none"> ➤ Diversify energy production sources to reduce costs of production and enhance its reliability i.e. Solar ➤ Invest in exploration of mineral reserves
<i>Agro-based Industries</i>	<ul style="list-style-type: none"> ➤ Availability of raw materials from cash and food crops grown in the area including; sugarcane,, cotton, rice etc., and fish products for processing- (Muhoroni, Chemelil, Kibos and rice irrigation industries) ➤ Availability of water resources (Lake Victoria and permanent rivers-Kibos, Sondu and Nyando) 	<ul style="list-style-type: none"> ➤ Low adoption of technology leading to low production ➤ Inadequate transport infrastructure ➤ Price fluctuations ➤ Lack of established Value chains 	<ul style="list-style-type: none"> ➤ Provide appropriate technology to enhance value addition ➤ Provide adequate, supportive transport and infrastructure ➤ Diversify energy production sources to reduce costs of production and enhance its reliability ➤ Promote the formation of cooperatives and Sacco's to advance marketing
<i>Mineral-based industries</i>	<ul style="list-style-type: none"> ➤ Availability of mineral resources like homaline, granite, oil and limestone, sand among others need to be exploited ➤ Availability of water resources (Lake Victoria and rivers) 	<ul style="list-style-type: none"> ➤ Low adoption of technology for exploration and exploitation. ➤ Inadequate transport infrastructure ➤ High energy costs 	<ul style="list-style-type: none"> ➤ Provide adequate, supportive transport and infrastructure ➤ Diversify energy production sources to reduce costs of production and enhance its reliability ➤ Invest in exploration of potential mineral reserves

<p><i>Cottage industries and crafts.</i></p>	<ul style="list-style-type: none"> ➤ Availability of raw materials for the industry ➤ Existing cooperative organizations ➤ Available labour 	<ul style="list-style-type: none"> ➤ Insufficient market for finished products ➤ Lack of frameworks to safeguard intellectual property rights (IPR) 	<ul style="list-style-type: none"> ➤ Sensitize players in the sector on the aspect of IPR and enforce regulations on the same ➤ Promote assertive marketing campaigns for products both domestically and internationally
<p>Tourism- Western Kenya tourism circuit.</p>	<ul style="list-style-type: none"> ➤ The existence of numerous tourist attraction sites such as diversity of landscapes, wildlife, culture and the many historical sites and suitable beaches along Lake Victoria ; these includes; Ndere island National park, wildlife-Omieri snake Impala sanctuary, Kisumu National museum, Historical sites (Songhor Palaentological site, Nyabondo view point, Luanda Magere, Kit-Mikayi), recreational and sport fishing in Lake Victoria. ➤ The county is well served by national and international trunk roads as well as Kisumu International Airport ➤ Well-developed tourist class hotels in the county mainly in Kisumu City such as Kisumu Hotel, Sunset Hotel, Imperial hotel, Jumuia Guest House, Great Lakes Hotel and Lasavana Hotel 	<ul style="list-style-type: none"> ➤ Underutilization tourism potential in the area ➤ Low number of visitors to the county and the circuit ➤ Frequent conflict between the human and hippos/crocodiles along the shores of Lake Victoria ➤ Inadequate tourism facilities ➤ Inadequate transport infrastructure 	<ul style="list-style-type: none"> ➤ Open up the underutilized sites ➤ Invest in roads and other infrastructure for the tourist attraction areas ➤ Revive and Rehabilitate airstrips connecting the circuits ➤ Promote domestic tourism by providing incentives and subsidies ➤ Strict enforcement of the existing regulations for safeguarding protection areas ➤ Invest in ICT infrastructure and capitalize on online marketing ➤ Increase in tourism market segment ➤ Enhance security in tourism potential areas

	<ul style="list-style-type: none"> ➤ Potentiality for urban tourism 		
Housing	<ul style="list-style-type: none"> ➤ Adequate land for housing ➤ There is room for public-private partnerships in the provision of housing; ➤ Availability of local building materials and technology that are more affordable; ➤ Availability of infrastructure in some decaying estates; Ondiek estate, Kenya Railway estates, Makasembo estates among others ➤ National land reforms established a GIS based National Land Information Management System (NLIMS) for land management; 	<ul style="list-style-type: none"> ➤ Lack of enforcement of existing legislation on house development and land use ➤ Rural Urban Migration resulting to high population; ➤ Housing demand outstrips supply hence deficit in good quality housing supply ➤ High cost of building materials; ➤ Prevailing high unemployment levels(poverty). ➤ Little government involvement in housing provision which has left it in the hands of private developers ➤ Low investments in housing and infrastructure development; ➤ Proliferation of slums 	<ul style="list-style-type: none"> ➤ Enforce harmonize and regularly review the existing legislative and regulatory instruments ➤ Bridge the gap between housing demand and supply by; government returning to provision of rental housing schemes, promotion of PPP, tax rebates and subsidies to lower construction material, promote use of locally available building materials and indigenous knowledge ➤ Provide adequate and appropriate infrastructure for housing development
Transport Road	<ul style="list-style-type: none"> ➤ Rapid urbanization ➤ Devolution leading to opening up of rural areas ➤ Existing development plans ➤ Existing road network ➤ Increased trade and investments 	<ul style="list-style-type: none"> ➤ Most roads are in poor condition; ➤ Lack of coordination of activities by various agencies in charge of the sector; ➤ Lack of NMIMT infrastructure; 	<ul style="list-style-type: none"> ➤ Open up more rural access roads ➤ Properly maintain all roads ➤ Integrate the existing transport system ➤ Upgrading of existing roads

	<ul style="list-style-type: none"> ➤ Exploitation of untapped resources 	<ul style="list-style-type: none"> ➤ Congestion and on street trading in urban areas; ➤ Uncontrolled motorcycle outburst in both rural and urban; ➤ Inadequate parking space especially in urban areas ➤ Encroachment and/ or grabbing of road reserves; ➤ Inadequate or lack of terminal facilities hence picking and dropping of passengers in undesignated areas. ➤ Congestion and on street trading in urban areas; ➤ Poor transport infrastructure; ➤ Missing links (poor connectivity); ➤ Poor quality of transport services; ➤ Inappropriate modal split; ➤ Unexploited regional role of the transport system; ➤ Transport system not fully integrated; ➤ Urban environmental pollution 	<ul style="list-style-type: none"> ➤ Improve linkages between the airstrips and the existing major towns ➤ Repossess and revert all illegally acquired land for roads infrastructure; ➤ Create linkages to agricultural, tourist and urban areas ➤ Proper traffic management system for urban areas ➤ Enforce a regulatory standard requirement for all public transport service operators ➤ Encourage private sector participation ➤ Connect all the county headquarters with proper transportation system ➤ Consolidate and explore new funding sources.
--	--	---	--

		<ul style="list-style-type: none"> ➤ Lack of an urban/rural transport policy; ➤ Inadequate human resource capacity and poor workmanship ➤ Poor drainage systems 	
<i>Rail</i>	<ul style="list-style-type: none"> ➤ Rapid urbanization; ➤ Increased accessibility; ➤ Increased trade and investments in the county; ➤ Increased revenue; ➤ Exploitation of untapped resources; ➤ Reduction of transport costs; ➤ Proposed Standard Gauge Railway line passing through Kisumu connecting Kenya, Uganda and Ruanda 	<ul style="list-style-type: none"> ➤ Poor condition of the existing railway line(defunct) ➤ Poor institutional management; ➤ Lack of cargo handling equipment; ➤ Unreliability of the railway transport ; 	<ul style="list-style-type: none"> ➤ Revitalize the Kisumu railways to unmask the potential of the county as a hub for business in East Africa ➤ Implement construction phase 2 of the standard gauge railway (SGR); ➤ Improve institutional management of railway transport; ➤ Develop and expand the railway line across the country and make it the core national mode of transport. ➤ Develop a policy to enhance optimal utilization of the existing railway line and the stations
<i>Air</i>	<ul style="list-style-type: none"> ➤ Existence of Kisumu international airport ➤ Rapid urbanization; ➤ Increased accessibility; ➤ Increased trade and investments; ➤ Increased revenue; 	<ul style="list-style-type: none"> ➤ Insufficient and ineffective linkages between airports and other transport modes; ➤ High maintenance cost; 	<ul style="list-style-type: none"> ➤ Improve linkages between airports and the city/urban centres; ➤ Enforce development control measures within and around airports.

	<ul style="list-style-type: none"> ➤ Exploitation of untapped resources; ➤ Reduction of transport costs; ➤ Opening up of undeveloped areas in the county ➤ Devolution(the airports proximity to counties bordering Kisumu including Siaya, Busia, Homabay, Migori, Kisii and Nyamira) 		<ul style="list-style-type: none"> ➤ Develop transit shed at the airport to enable it handle export and import that will attract cargo airlines.
<i>Pipeline</i>	<ul style="list-style-type: none"> ➤ Rapid urbanization; ➤ Increased trade and investments; ➤ Increased revenue; ➤ Reduction of transport costs; 	<ul style="list-style-type: none"> ➤ The pipeline's interface with other transport modes such as roads, rail and marine/water transport is not planned and integrated efficiently; 	<ul style="list-style-type: none"> ➤ Integrate the pipeline transport with other modes of transport; ➤ Expand the pipeline to enhance regional integration
<i>Marine and Inland Water</i>	<ul style="list-style-type: none"> ➤ Presence of Lake Victoria and major permanent rivers 	<ul style="list-style-type: none"> ➤ Delays In Cargo Handling(Ships cancelling deliveries to the port occasionally; ➤ Water hyacinth menace that has made business low at the port ➤ Bureaucracy; ➤ Low storage capacity; ➤ Non-operation ICDs (safe for those in Kisumu and Nairobi); ➤ Inadequate harmonization and overlap in the many legislations that govern its activities; ➤ Lack of institutional capacity; ➤ Stiff competition from private developers and other countries. 	<ul style="list-style-type: none"> ➤ Restructure management of ports and inland water transport; ➤ Expand ports to handle more cargo; ➤ Control water hyacinth ➤ Maximize use of inland water transport; ➤ Develop and maintain ICDs; ➤ Provide adequate infrastructure to the port;

			<ul style="list-style-type: none"> ➤ Optimize the split of cargo between road, rail and pipeline.
<p>Public Utilities- Water and sanitation, solid waste management, Energy</p>	<ul style="list-style-type: none"> ➤ Availability of water sources including Lake Victoria, rivers, shallow wells, unprotected springs, water pans, dam, boreholes and roof catchment ➤ Presence of several actors in water provision including WASH network and 16 active water based NGOs including; World Vision, Care Kenya, Practical Action, Plan International, Millennium Cities Initiatives, Umande Trust, Kisumu Urban Project, Cordaid Urban Matters, Kenya Red Cross, UNICEF, STIPA, CSO Network, SANA, ADS-Kenya, SNV and Living Water Service Centre. ➤ Growing energy demand ➤ Alternative energy sources-the county has prospects for energy sources including solar 	<ul style="list-style-type: none"> ➤ Frequent water shortages in major towns ➤ Under exploitation of rainwater harvesting and storage ➤ Pollution of existing water bodies ➤ Unreliable access to clean and sufficient water ➤ Inadequate public sanitation facilities ➤ Lack of dumping sites in some towns/urban centres, poor siting and poor management of the sites. ➤ Outbreak of waterborne diseases ➤ Inadequate sanitation facilities provision ➤ Lack of designated waste disposal sites in most of the urban/market centres ➤ Lack of sewerage network in major towns ➤ Frequent power outages ➤ Inadequate electricity supply 	<ul style="list-style-type: none"> ➤ Invest in water harvesting technology and storage facilities ➤ Develop appropriate water reticulation network ➤ Adopt suitable technology for exploiting underground water ➤ Protect water sources and catchment areas ➤ Develop appropriate sanitation infrastructure including collection, disposal and treatment systems and upgrade it to cover all urban areas to meet the growing demand of the increasing population ➤ Develop sewerage system in major towns ➤ Promote the 3R`s guidelines (reduce, reuse and recycle) ➤ Encourage use of renewable energy (biomass) cogeneration ➤ Develop other energy sources such as wind and solar

		<ul style="list-style-type: none"> ➤ Under exploitation of other energy sources 	<ul style="list-style-type: none"> ➤ Use of less energy consuming equipment ➤ Expand electricity cover to trading centers ➤ Provide relevant policy framework that will guide the tapping and use of the energy resources
Information and Communication	<ul style="list-style-type: none"> ➤ Existing systems in the County ➤ High population 	<ul style="list-style-type: none"> ➤ Limited access to internet in both rural and urban areas ➤ Poor connection and reliability ➤ High connection costs 	<ul style="list-style-type: none"> ➤ Mainstream ICT in all sectors of the County to increase efficiency and productivity and improve on existing platforms ➤ Expand fiber optic network to all urban areas to increase coverage
Education	<ul style="list-style-type: none"> ➤ Already existing educational institutions including Universities and tertiary colleges such as RIAT ➤ Government subsidies in the education system 	<ul style="list-style-type: none"> ➤ High levels of poverty ➤ Skewed distribution of institutions in favor of urban areas ➤ Low transition and completion rates especially for girl child ➤ Limited land for expansion of educational facilities ➤ Poor infrastructure in educational facilities in the County ➤ Low literacy levels 	<ul style="list-style-type: none"> ➤ Invest in expansion of existing educational facilities ➤ Renovation of existing infrastructure in the facilities ➤ Provide learning facilities and equipment ➤ Post more teachers, especially to understaffed schools ➤ Strengthen the Educational and Inspection Unit;

		<ul style="list-style-type: none"> ➤ Negative cultural practices, religious and traditional beliefs ➤ Inadequate learning facilities (building, desks and textbooks) ➤ Understaffing ➤ High dropout rate ➤ Child labour and negative attitude towards education ➤ Lack of political goodwill 	<ul style="list-style-type: none"> ➤ Discourage traditional and cultural taboos discriminating against education of the girl-child ➤ Establish youth polytechnics ➤ Encourage girls to continue with education even after pregnancy and delivery ➤ Encourage the active fusion of innovation and research into coursework taught by colleges and Universities ➤ Encourage specialization in colleges based on County potentials
Sporting infrastructure	<ul style="list-style-type: none"> ➤ Existing facilities – Moi stadium, and many playing grounds ➤ Boat racing in areas like Dunga beach and Yatch club among others ➤ Immense, untapped sporting talent in the county ➤ Home to renowned football club Gor Mahia ➤ Existence of many regional and national tournaments that need to be hosted in good quality 	<ul style="list-style-type: none"> ➤ Lack of proper repair and maintenance of sporting structures ➤ Poor management of existent infrastructure ➤ Skewed distribution ➤ Little modernization and upgrade of sporting infrastructure ➤ Underutilization stemming from little promotion of sports as a potential income earner 	<ul style="list-style-type: none"> ➤ Set aside budgetary allocation for revamping and upgrading sporting facilities ➤ Provide all necessary stadia facilities and their auxiliary utilities

	<p>stadia; sports tourism like Intercounty sporting activities</p> <ul style="list-style-type: none"> ➤ Availability of land for infrastructure development in various parts of the county including Lake Victoria 		
<p>Health</p> <p><i>National and County Hospitals ie.Jaramogi Oginga Odinga referral Hospital</i></p>	<ul style="list-style-type: none"> ➤ Increasing population both in the county and neighboring counties meaning more people will need healthcare ➤ Increasing integration between Kisumu and other counties and also with the Lake region countries that provides an opportunity for health tourism ➤ Continued technological advances in the field of medicine in the form of invention of more efficient equipment and therapies ➤ Advances in training of niche-specialized healthcare professionals in the county 	<ul style="list-style-type: none"> ➤ Extremely high numbers of patients, straining the available infrastructure and resources ➤ Disproportionate healthcare professionals to patient ratio ➤ Inadequate medical supplies ➤ Little adoption of new technologies relevant to provision of modern healthcare ➤ Unaffordability of specialized care and advanced medical procedures ➤ Inappropriate working conditions for personnel and subordinate staff 	<ul style="list-style-type: none"> ➤ Increase the number of beds in hospitals by building and furnishing more wards as may be necessary ➤ Strive towards reaching the WHO recommended professional to patient ratio by training employing more qualified staffs ➤ Carry out frequent refresher courses for medical professionals to make them knowledgeable on new, globally accepted trends in healthcare provision ➤ Determine the annual budgetary allocation necessary for ample provision of medical supplies to each hospital, and make the requisite apportionment ➤ Improve working conditions for personnel by hiring new staff to augment the existent workforce, review working hours and safety concerns of personnel

			<ul style="list-style-type: none"> ➤ Subsidize the cost of specialized services to increase accessibility by low income earners ➤ Increase the capacity of provincial and district hospitals to offer high quality curative care to reduce the pressure on national hospitals
<i>Nursing Homes</i>	<ul style="list-style-type: none"> ➤ Increased number of women choosing to seek reproductive and child care from hospitals ➤ High rate of population growth 	<ul style="list-style-type: none"> ➤ Insufficient numbers of qualified personnel to offer quality services ➤ Inadequate medical supplies ➤ Frequent power and water outages stalling service provision 	<ul style="list-style-type: none"> ➤ Train and employ more service providers to these facilities ➤ Maintain ample supply of required medical supplies ➤ Provide efficient repair, replacement and maintenance of equipment and general infrastructure
<i>Health Centers & County hospitals</i>	<ul style="list-style-type: none"> ➤ Greater drive by both county and national governments to upgrade these facilities ➤ Interest by foreign and internal research agencies to conduct research in these facilities 	<ul style="list-style-type: none"> ➤ Inadequate number of professional and support personnel ➤ Outages of utilities like power and water supply ➤ Little, inappropriate or inexistent infrastructure to facilitate referrals in case of emergencies e.g. ambulances ➤ Insufficient medical supplies 	<ul style="list-style-type: none"> ➤ Train and employ more service providers to these facilities ➤ Provide appropriate infrastructures for the health facilities ➤ Maintain ample supply of required medical supplies
<i>Private Clinics</i>	<ul style="list-style-type: none"> ➤ High rate of population growth 	<ul style="list-style-type: none"> ➤ High costs of operation leading to outages of utilities like electricity and water 	<ul style="list-style-type: none"> ➤ Offer government incentives to providers like tax rebates to enable

	<ul style="list-style-type: none"> ➤ Government encouragement of PPP in provision of healthcare ➤ Preference of private healthcare by the general population 	<ul style="list-style-type: none"> ➤ High cost of medical supplies ➤ Limited number of employed healthcare professionals 	<p>them reduce the cost of their services</p> <ul style="list-style-type: none"> ➤ Reduce medical supplies, energy and water supply costs to lower their expenditure
<i>Dispensaries/ Rural Health Centres</i>	<ul style="list-style-type: none"> ➤ Increase in numbers of student taking up community medical-related courses ➤ Improving transport infrastructure easing access to these institutions 	<ul style="list-style-type: none"> ➤ Inadequate number of qualified personnel ➤ Inexistent or insufficient facilities necessary to dispense healthcare ➤ Skewed distribution and inadequate access to the facilities ➤ Poor linkages with district and provincial hospitals in case of referrals ➤ Poor infrastructure compromising access to health centres by resident populations ➤ Poor or inexistent water and electricity utility infrastructure ➤ Insufficient funding ➤ Poor response to disease prevention campaigns ➤ Poor sanitation especially pit latrines 	<ul style="list-style-type: none"> ➤ Encourage partnership between traditional healthcare providers with conventional healthcare providers ➤ Enhance transport infrastructure to ease access to these centres and emergency referrals to larger facilities ➤ Provide medical supplies and properly maintain utility infrastructure necessary for proper service delivery ➤ Allocate adequate funds for the health facilities ➤ Increase number of qualified personnel working in these institutions
Promoting Balanced Intra-County Development Strategy			
area	opportunities	constraints	strategies
-South region	<ul style="list-style-type: none"> ➤ Existing resources – Forests, minerals, agriculturally based 	<ul style="list-style-type: none"> ➤ Inadequate infrastructural facilities and services 	<ul style="list-style-type: none"> ➤ Strengthen the established Lake Basin economic block in the region

	<p>activities, Industries, tourism-based resources, lake-based resources</p> <ul style="list-style-type: none"> ➤ Enabling policy framework ➤ Establishment of the County under devolution ➤ Rain fed and irrigated agriculture ➤ Fishing Tourism ➤ Urbanization-many growing trading centres including fish landing beaches ➤ Gateway county to EAC ➤ Sufficient transport infrastructure in the city-road, air, water, pipeline and railway 	<ul style="list-style-type: none"> ➤ Under exploitation of resources ➤ Weak linkages between regions 	<ul style="list-style-type: none"> ➤ Establish economic zones in the county according to its potential ➤ promote processing and value addition of the various products. ➤ Encourage equitable exploitation and sound management of mineral resources while ensuring local participation for improved economic development ➤ Promote investment in sustainable tourism including eco- tourism ➤ Promote irrigation activities for improved productivity in quantity and quality of yield within the regions along the lake and rivers ➤ Promote industrialization and value addition through the provision of support infrastructure in the less developed regions of the County as well as strengthening the better developed regions
Promoting Rural Development			
Opportunities	constraints	strategies	

<ul style="list-style-type: none"> ➤ Resource endowment; forest based, tourism-based resources, agriculture-based activities- rain fed and irrigated, mineral deposits and industries ➤ Human resource (knowledge base) ➤ Existing infrastructure 	<ul style="list-style-type: none"> ➤ Under exploitation of resources ➤ Weak rural – urban linkages ➤ Inefficient and dilapidated infrastructural services ➤ Slow adoption technology and innovation ➤ Low productivity ➤ Human – wildlife conflicts(hippos) ➤ Uncontrolled sub-division of agricultural land especially in the Peri urban areas of Kisumu 	<ul style="list-style-type: none"> ➤ Develop appropriate transport and infrastructural facilities and services ➤ Promote rural industrialization (rural tourism, mining, agro based industries) through establishment of production units in the rural areas in relation to their potential ➤ Promote urban containment to reduce effects of urban sprawl into the rich agricultural ➤ Promote sustainable land uses
Urbanization strategy		
opportunities	constraints	strategies
<ul style="list-style-type: none"> ➤ Regional hub that serves the Great Lakes Region ➤ Well-developed transport infrastructure including Inland Port, international airport, Class A&B roads, pipeline and railway line ➤ Existing and proposed infrastructure developments (SGR) ➤ Devolution ➤ Supporting Policies 	<ul style="list-style-type: none"> ➤ Skewed spatial distribution of urban centres ➤ Urban Sprawl ➤ Informal Settlements ➤ Unreliable Transport Systems ➤ Lack of Role Specialization ➤ Poor Implementation of Development ➤ Plans and Planning Policies ➤ Land and Governance Issues ➤ Inequality in Urban Areas ➤ Solid Waste Management 	<ul style="list-style-type: none"> ➤ Promote the development of centers as per their potential and population as local, market, rural, urban centers and growth centers. ➤ Create an enabling environment for commercial and industrial developers to activate potential development within the urban areas hence increased employment opportunities for improved livelihoods of urban dwellers. ➤ Provide alternative areas for development of urban centers by provision of services and infrastructure closer to the rural areas thus urban containment and stimulating rural growth. ➤ Strengthen urban-rural linkages through provision of integrated transportation and communication system to reduce the rate of urbanization and improve the rural economy

4.2 National Spatial Plan Policy Guidelines and Measures for Kisumu County

The National Spatial Plan has stipulated policies to provide a foundation upon which to anchor the strategies enumerated therein. The primary aim is to inculcate discipline in the use of land and natural resources of the country thus stemming duplication and wastage of the resources.

This section seeks to provide the spatial policy guidelines and measures aimed at promoting the achievements of the objectives of the National Spatial Plan using its guidelines. They aim at enhancing global competitiveness and economic efficiency, optimizing the use of land and natural resources, promoting the regional balanced development and conservation of the environment. These policies are supported by a wide range of measures which spell out the specific actions to be undertaken to actualize the policy intentions. The policies shall ensure that the county is globally competitive as an investment especially in emerging sectors such as the ICT. The policies shall also be implemented by the county government's agencies responsible for physical planning and development control as well as the authorities responsible for land administration.

The following are the policies and measures specific to Kisumu County.

Table 4: National Spatial Plan Policy Guidelines

Thematic area	policy	Measures
Resource Potential Growth areas	<ul style="list-style-type: none"> ➤ Enhanced agricultural production and value addition ➤ Investment in social and physical Infrastructure ➤ Environmental conservation ➤ Intensive land use ➤ Sustainable urban land use and growth ➤ Balanced growth ➤ Densification of built-up areas ➤ Development of tourism infrastructure in the lake region ➤ Investment in physical and social infrastructure ➤ Sustainable use and exploitation of natural resources ➤ Concentrated development especially around key urban areas ➤ Resource conservation and cultural preservation around Victoria 	<ul style="list-style-type: none"> ➤ Infrastructure provision to support value addition initiatives and human settlement ➤ Development of small and medium urban Centres ➤ Conservation of water resources ➤ Rural development through provision of infrastructure, agricultural sector development and related economic activities ➤ Development and rehabilitation of key infrastructure in underserved locations ➤ Provision of services to the under-served population ➤ Environmental protection ➤ Conservation of wildlife and forest resources ➤ Selective development concentration ➤ Infrastructure provision in key human settlement zones ➤ Environmental protection of parks including marine reserves and forests ➤ Conservation of unique cultural landscape and resources ➤ Small and medium urban Centres development ➤ Rural development through provision of infrastructure, agricultural sector development and related economic activities
National Spatial Structure	<p>The National Spatial Plan shall be the basis for the preparation of lower tier development plans to achieve integrated and sustainable land use planning and to promote harmony and mutual cooperation in planning in Kenya</p>	<ul style="list-style-type: none"> ➤ All Inter-county, County and Local physical and land use plans for Kisumu county shall be guided by the objectives and policies of the NSP ➤ Existing physical and land use plans shall be reviewed to conform to the objectives and policies of NSP ➤ All sectoral policies shall take cognizance of the objectives and policies of NSP ➤ The review of the 5-year medium term plans (MTP's) shall take into account provisions of the NSP

		<ul style="list-style-type: none"> ➤ Planning authorities at the national and county levels shall be supported with adequate human, financial and technical resources to promote sustainable Physical and land use planning and development
Enhancing National Competitiveness	The selective concentration concept shall be adopted for the planning and location of urban based economic activities in the to leverage on national competitiveness.	<ul style="list-style-type: none"> ➤ Concentrate urban based economic activities through the preparation of physical and land use Development Plans to guide development in the major urban centres; Kisumu, Ahero, Muhoroni, Chemelil, Maseno, Awasi, Katito, Pap Onditi, Holo and Sondu.
	The major urban areas shall be planned and provided with appropriate infrastructure to enhance efficiency and quality of life.	<ul style="list-style-type: none"> ➤ Enhance the Livability Index for urban areas in the county by providing quality and affordable housing, efficient public transportation, improving neighborhood characteristics, conserve and improve the quality of the environment, quality healthcare, create job opportunities, and promote civic and social engagement ➤ Establish an efficient public transportation system including NMT ➤ Provide appropriate trunk infrastructure in the form of reliable energy, water, sanitation and ICT ➤ Advance technological Readiness through the provision of technological centers linked to different levels all over the county; Science parks, Research laboratories among others ➤ Improve the road infrastructure by providing for modal split, linkages and interchanges
	Land and natural resources of the less developed areas shall be utilized optimally and sustainably to enhance national competitiveness.	<ul style="list-style-type: none"> ➤ Encourage the transformation from traditional farming and livestock keeping methods to modern practices ➤ Widen the economic base of the less developed regions and places of the County through strengthening of agricultural downstream processing of agricultural products ➤ Identify and develop the tourism potential within the County ➤ Explore and exploit the mineral, energy and water potentials ➤ Provide transportation networks and other infrastructure necessary to support exploitation of land and other natural resources ➤ Provide technical training and social development programmes to enhance integration of the communities in these areas into the modern economy

		<ul style="list-style-type: none"> ➤ Support development of urban areas in the less developed areas of the County to catalyze development
	The National Spatial Plan shall promote development of the Blue Economy and its integration into the economy of the Country	<ul style="list-style-type: none"> ➤ Provide for robust transportation for efficient, modern and low -cost connectivity by road, lake and air ➤ Ensure the formulation and implementation of an integrated Lake Victoria land use plan; ➤ Develop and apply standards, guidelines and best practices that support a sustainable blue economy. National and County governments, shall develop and apply the global sustainability standards, guidelines and best practices. ➤ Develop the requisite infrastructure for the development of the Blue Economy ➤ Establish and implement a framework for beach management that ensures public access as well as protection and conservation of the beaches. ➤ Spatial development plans shall be prepared for the main transportation corridors to guide the planning and development of the corridors (proposed Lake Victoria Ring road)
	The National Spatial Plan encourages enhanced cooperation in spatial and economic planning with member states of the East African Community (EAC) and the Common Markets of East and Southern Africa (COMESA)	<ul style="list-style-type: none"> ➤ The planning of trans-boundary resources transport corridors and infrastructure as well as border urban areas shall be undertaken jointly; Lake Victoria plan (Kenya, Uganda and Tanzania), Railway ,airport and inland port planning.
Modernizing Agriculture	<ul style="list-style-type: none"> ➤ Agro climatic zones III shall be safeguarded against the threat of urbanization and land subdivision 	<ul style="list-style-type: none"> ➤ Urban spatial development plans prepared in the County shall set urban growth limits ➤ High potential agricultural land within the County shall be strictly designated for agriculture production purposes ➤ Subdivision of land within agricultural zones shall be strictly regulated

		<ul style="list-style-type: none"> ➤ New urban developments shall be encouraged to be located in existing brownfield areas, low potential areas and less urbanized areas of the County
	<ul style="list-style-type: none"> ➤ The use of land in high agricultural potential areas shall be intensified to increase productivity 	<ul style="list-style-type: none"> ➤ Adopt modern agricultural production methods and practices ➤ Upscale the adoption of technology in agricultural production ➤ Encourage mixed farming ➤ Promote agri-business ➤ Provide appropriate infrastructure to support the exploitation of the high potential areas
	<ul style="list-style-type: none"> ➤ The irrigation potential of the county shall be optimized by promoting investment in irrigation agriculture for high value crops 	<ul style="list-style-type: none"> ➤ Existing irrigations schemes shall be rehabilitated and expanded in Such as the Ahero Rice Irrigation Scheme. ➤ Research shall be undertaken to identify the irrigation potential in all areas throughout the county ➤ New irrigation schemes shall be established in areas with irrigation potential ➤ Small holder irrigation schemes shall be encouraged through sensitization campaigns and reducing the cost of irrigation equipment
	<p>The fishing potential of the county shall be optimized to increase the food stock and export earnings</p>	<ul style="list-style-type: none"> ➤ Protect the inland fishing resources from over fishing, pollution and destruction of the breeding grounds ➤ Support the sustainable exploitation of lake fishing resource ➤ Encourage small holder farmers to establish fish farms in areas with potential throughout the county ➤ Undertake research to identify the areas with potential for fish farming ➤ Provide appropriate infrastructure to support the fishing industry

		<ul style="list-style-type: none"> ➤ Establish Cage fishing ➤ Increase access to fishing equipment by making them affordable through reduced taxation
Diversifying tourism	The NSP shall promote diversification of tourism by offering diverse products in the different tourist circuits throughout the county.	<ul style="list-style-type: none"> ➤ The tourism (Western) Circuit in which Kisumu is part shall be planned and developed to offer; ecotourism, ecology/study tourism, sports and cultural tourism, adventure tourism, medical tourism, MICE, Agro tourism and cultural and heritage tourism products
	Appropriate Tourism support infrastructure and facilities shall be provided	<ul style="list-style-type: none"> ➤ Carry out an inventory of tourism infrastructure and facilities in the county. ➤ Formulate planning regulations and standards to guide tourist specific infrastructure and facilities. ➤ Develop the requisite tourism support infrastructure and facilities. ➤ Upgrade the existing tourism facilities and infrastructure. ➤ Adopt low carbon and green tourism infrastructure options. ➤ Increase bed capacity in tourist attraction areas and towns throughout the county. ➤ Provide and upgrade the ICT infrastructure to support tourism.
	Tourist attraction areas and sites shall be conserved and protected	<ul style="list-style-type: none"> ➤ Identify, map and protect all tourism attraction sites in the County ➤ Prohibit the location of incompatible land use activities. ➤ Strictly regulate developments within the tourist attraction sites.
	Appropriate transport infrastructure shall be provided to link the different tourist circuits, attraction areas and sites	<ul style="list-style-type: none"> ➤ Prepare and implement an integrated Tourism transportation master plan. ➤ Upgrade the existing county land and water transportation facilities.

		<ul style="list-style-type: none"> ➤ Upgrade the air transportation facilities. ➤ Encourage application of low carbon options in transport infrastructure.
	Governance of the tourism sector shall be enhanced.	<ul style="list-style-type: none"> ➤ Prepare integrated physical and land use plans to guide development of the tourism sector. ➤ Prepare and implement National Policies on land use, wildlife and tourism; ➤ Undertake research to identify more tourist attraction areas and sites, inventorize Agro tourism sites in potential areas and food festivals ➤ Enhance tourism dedicated security to the tourism sector ➤ Identify and map potential eco-tourism development sites; ➤ Undertake awareness campaigns on the value of eco-tourism to the industry players both locally and globally; ➤ Develop standards for eco-tourism establishments; ➤ Facilitate access to eco-tourism development incentives
	Physical and land use Development plans shall be prepared to guide implementation of the flagship projects for the tourism sector	<ul style="list-style-type: none"> ➤ The County governments to address problems of unplanned development of lodges and poor access roads in the tourist areas ➤ Prepare plans for the main tourism sites; Ndere Island National park, Impala sanctuary, National museum, historical sites (Songhor Palaentological site, Luanda Magere and Kit-Mikayi stones among others).
Managing Human Settlements	The expected increase in population in urban areas shall be anticipated and accommodate particularly for the main urban areas	<ul style="list-style-type: none"> ➤ Increase the housing stock by planning and redeveloping existing housing areas ➤ Plan and designate land for new housing schemes

		<ul style="list-style-type: none"> ➤ Upgrade the existing and provide additional infrastructure and facilities to support housing development in the urban areas ➤ Formulate enabling local policy frameworks to support employment and income generation ➤ Locate industrial and service development activities with the global reach in the main urban areas ➤ Provide efficient transportation and quality infrastructure in human settlements to support industrial and service sectors ➤ Promote adoption of technology and fiscal incentives and market support for the informal sector
	<p>The Nairobi, Mombasa and Kisumu growth areas shall be supported to enhance global competitiveness.</p>	<ul style="list-style-type: none"> ➤ Plan and develop the urban areas as economic development areas. These should address the spatial and aesthetic quality of the urban areas; provision of housing, protection of the natural environment; efficient transportation and quality infrastructure and urban facilities; safety and security ➤ Incorporate green belts to act as buffer zones and carbon sinks in urban areas ➤ Regulate developments in the green buffer zones to only allow compatible use ➤ Less intensive agricultural practices such as kitchen gardening shall be promoted
	<p>Alternative urban areas shall be developed and supported to promote balanced regional development and spur growth</p>	<ul style="list-style-type: none"> ➤ Provide main towns and urban centres with the requisite infrastructure to support their growth and development ➤ Prepare local physical development plans to define the urban growth limits for the main towns and urban centres

		<ul style="list-style-type: none"> ➤ Enforce strict regulations and justifications on development control processes in the County ➤ Intensify the supply of urban infrastructure within the area contained to make it attractive for investment
	Rural growth centres shall be rationalized and supported to act as central places and settlements clustered to free the rich agricultural land	<ul style="list-style-type: none"> ➤ Provide basic services such as extension services, health facilities, markets, sanitation, water, power and education to improve the quality of rural life ➤ Undertake sensitization and awareness campaigns on the need to conserve agricultural land by discouraging land fragmentation ➤ Progressively link urban and rural centres by means of secondary roads as a minimum ➤ Promote sectors such as agriculture that have potential to stimulate rural development ➤ Incorporate disaster management and mitigation in planning of rural settlements
	Human settlements shall be developed in line with environmental and natural resources conservation to improve living conditions	<ul style="list-style-type: none"> ➤ Map out and prohibit development in environmental sensitive areas ➤ Plan and provide an integrated waste management system ➤ Prepare and implement zoning guidelines to ensure compatibility of land uses in human settlement areas ➤ Promote social organization and environmental awareness through the participation of local communities in the identification of public service needs ➤ Strengthen the capacity of the local governing bodies to effectively deal with environmental challenges associated with rapid and sound urban growth

		<ul style="list-style-type: none"> ➤ Empower community groups, non-governmental organizations and individuals to assume responsibility and authority for managing and enhancing their environment ➤ Deliberately provide adequate and functional open spaces in urban places ➤ Prescribe planning standards for open/green space on private development ➤ Encourage non-motorized transport (NMT) and re-introduction of public transport in the main urban centres ➤ Aim for zero carbon building standards by 2032 and ensure all buildings meet energy efficiency criteria
	<p>The NSP advocates for the provision of an efficient, reliable and effective transport system for human settlements</p>	<ul style="list-style-type: none"> ➤ Plan and develop an integrated urban transport system to enhance provision of relevant modal split in the County ➤ Integrate land use and transportation planning to encourage development patterns which reduce transport demands ➤ Establish an efficient mass transit public transportation system in the County ➤ Establish an effective transport management system that enhances the reliability and efficiency of the transport system ➤ Improve the road conditions and expand the linkages to human settlements ➤ Integrate NMT with existing transport infrastructure ➤ Incorporate the concept of green energy in transport systems planning and redevelopment ➤ Prepare a transportation strategy for each urban area, including non-motorized transport as part of the integrated urban development plan

		<p>required under the Urban Areas and Cities Act 2011, in collaboration with the National Government</p> <ul style="list-style-type: none"> ➤ The County Government to establish a comprehensive transportation management information system for all transportation modes
	<p>The management and governance of Human Settlements particularly the urban areas shall be improved</p>	<ul style="list-style-type: none"> ➤ Build institutional capacities of the urban areas management boards ➤ Integrate technology in management of human settlements to strengthen urban data systems ➤ Coordinate and strengthen development control mechanisms ➤ Provide adequate human resource and improve their capacity in management of human settlements in the sectors of; housing, settlement, land, infrastructure, construction, energy and disaster management ➤ Conduct research into migration trends to inform effective planning and provision of human settlements ➤ Enable public private partnerships in the provision of housing
	<p>NSP shall advocate for upgrading of the existing settlements</p>	<ul style="list-style-type: none"> ➤ Encourage redistribution of urban income through integrated development planning encompassing social, economic and physical factors ➤ Prepare Local Physical Development Plans for purposes of renewal and/or redevelopment of the informal settlements ➤ Formulate a housing policy that will focus on providing affordable and accessible housing in the County ➤ Ease the process of issuance of ownership documents to the legal owners in order to encourage formal developments ➤ Enforce development control regulations and adherence to building code and standards

		<ul style="list-style-type: none"> ➤ Enhance coordination of donor agencies activities within settlements by relevant authorities for optimal returns
	<p>Peri-urban development shall be managed and controlled to contain urban growth within its limits and protect rural land uses</p>	<ul style="list-style-type: none"> ➤ Formulate policy for urban containment and densification ➤ Formulate and implement planning legislation on Peri-urban planning and management ➤ Institute sanctions on idle land to encourage productive and sustainable land utilization ➤ Create green belt buffer zones to define the urban and Peri-urban areas of the County ➤ Incentivize local farmers to preserve agricultural land by promoting local production and providing ready markets for agricultural produce
<p>Conserving the Natural Environment</p>	<p>All environmentally sensitive areas shall be protected and utilized in a sustainable manner</p>	<p>Wetlands</p> <ul style="list-style-type: none"> ➤ Prepare integrated wetland resource management plans to promote sustainable use of freshwater and wetland resources(Victoria and Singida swamp) ➤ Develop and implement catchment-based wetland management plans for all wetland areas in the County through a participatory processes ➤ Rehabilitate and restore the degraded wetlands, river banks and lake shores and promote and support establishment of constructed wetlands ➤ Involve and empower communities in the management of fresh water and wetland ecosystems in the County ➤ Promote and institutionalize payment for environmental utility services to support catchment protection and conservation <p>Marine Ecosystems</p>

		<ul style="list-style-type: none"> ➤ Prepare integrated marine resource management plans to promote sustainable use of water resources in the County ➤ Undertake and support research and training in the conservation and management marine ecosystems and resources in the County ➤ Promote closer regional and cooperation in the conservation and management of marine breeding ➤ Harmonize and coordinate the roles of various regulatory agencies charged with the management of marine resources in the County ➤ Involve and empower communities in the management of marine ecosystems ➤ Implement Lake Management and Conservation Plans for Lake Victoria <p>Forest Ecosystems</p> <ul style="list-style-type: none"> ➤ Prepare integrated forest resource management plans to promote sustainable use of forest resources ➤ Develop and implement a County strategy for rehabilitation and restoration of degraded natural and indigenous forests and protect water catchment areas with active community involvement/participation ➤ Support effective implementation of the forest and other related policies and laws ➤ Develop and implement national standards, principles and criteria of sustainable forest management ➤ Encourage development and implementation of appropriate forestry-based investment programmes and projects ➤ Involve and empower communities in the management of the existing forest ecosystems
--	--	---

		<ul style="list-style-type: none"> ➤ Determine potential areas for farm/agro and dry land forestry ➤ The County Government to promote afforestation and agro-forestry through County Spatial Plans ➤ Map out potential areas for commercial plantation forestry ➤ Enforce legal and regulatory provisions for forest management and protection ➤ Indigenous forests shall be identified and protected from logging ➤ Involve and empower communities in the management of forest ecosystems through controlled logging, agro-forestry, re-forestation and natural regeneration ➤ Encourage development and implementation of appropriate forestry-based Investment programmes and projects <p>Hills</p> <ul style="list-style-type: none"> ➤ Generate and strengthen knowledge about the ecology and sustainable management of existing hills in the County ➤ Develop and implement strategies and action plans for sustainable management of the existing hills ➤ Promote integrated watershed management and alternative livelihood opportunities to enhance community participation and empowerment in the conservation and management of hills ➤ Adopt appropriate land use planning and watershed management practices for sustainable development of hill ecosystems ➤ Involve and empower communities in the management of mountain /hill ecosystems
--	--	--

	<p>All environmentally fragile areas shall be conserved and utilized in a sustainable manner</p>	<ul style="list-style-type: none"> ➤ Promote integrated natural resource management in the County (Singida swamp) ➤ Ensure application of Integrated Water Resources Management (IWRM) in the County ➤ Promote efficient adaptation measures for productive and sustainable resource management in the County ➤ Mainstream dry land issues into all County development plans and policies ➤ Involve and empower communities in the management of fragile ecosystems and promote environmental education and awareness ➤ Mainstream climate foresight and climate adaptation into planning at all levels by strengthening the climate resilience of communities in the dry areas of the County and promoting sustainable livelihoods ➤ Explore opportunities and develop appropriate mechanisms through which communities can benefit from bio-carbon initiatives ➤ Protect and increase forest cover and riverine vegetation areas in the County
	<p>All government agencies shall integrate environmental concerns in policy formulation, resource planning and development processes</p>	<ul style="list-style-type: none"> ➤ Waste Management and Pollution Control including research, legislation, use of viable technologies and enforcement of statutory mechanisms for the disposal of human and industrial waste, elimination of harmful emissions including those from factories and motor vehicles ➤ Develop and maintain an inventory of all vital habitats in the country, and create a biodiversity information data base of all plant and animal species, indicating their potential use ➤ Identify species which are rare and endangered with the aim of protecting them from extinction through the establishment of more

		<p>biosphere reserves, botanical gardens, arboreta, and through their propagation and captive breeding</p> <ul style="list-style-type: none"> ➤ Encourage the participation of local communities in conservation and management of the environment
	Community participation shall be mainstreamed in the protection and conservation of natural resources	<ul style="list-style-type: none"> ➤ Sensitize communities living around the natural resources on the need for conservation of the resources ➤ Develop mechanisms for sharing benefits accruing from the natural resources by the conservation agencies in consultation with the local communities ➤ Identify and map all disaster prone areas for sustainable management(i.e. River Nyando flooding)
	National and County Physical Planning departments shall mainstream climate change into their planning processes.	<ul style="list-style-type: none"> ➤ Build and strengthen research capacity on climate change and related environmental issues. ➤ Promote water conservation including reversal of degradation of the main water towers and rehabilitation and restoration of all water catchments. ➤ Promoting growing of drought tolerant traditional high value crops. ➤ Develop and promote the use of green energy
Integrating the National Transportation Network	National transport and Land use planning shall be integrated.	<ul style="list-style-type: none"> ➤ Strengthen the National Transport and Safety Authority to coordinate integration of the nation’s public and private transportation systems and to facilitate public transportation services in major urban areas ➤ Incorporate the needs of persons with disability in all the planning, development and management of the transport network ➤ Plan urban based activities to support mass transit systems and reduce the need for travel.

		<ul style="list-style-type: none"> ➤ Use land use patterns to guide transport investments to reduce travel time, increase regional accessibility, and encourage NMIMT (Non-Motorized and Intermediate Means of Transport) travel and encourage social cohesion ➤ Carry out traffic impact assessments for all land use changes as part of development control as a tool of land use planning in urban and rural areas. This will be useful in fostering best practices of integrating transport and land use planning. ➤ Enhance the planning of trees, greenery and mounds as buffer zones to roads and airstrips
	<p>An integrated and functional transport system for the national and urban areas shall be developed.</p>	<p>Air transport</p> <ul style="list-style-type: none"> ➤ Modernize and expand Kisumu international airport to function as a regional gateway to serve the Great Lakes Region and complement the inland port and as the major hub of the western region. <p>Water Transport</p> <ul style="list-style-type: none"> ➤ Rehabilitate and modernize Kisumu inland port to serve domestic needs and the exports and imports in Uganda and Tanzania. ➤ Develop the lake Victoria beaches to serve passenger travel, fishing industry, tourism, other commercial activities and regional needs <p>Rail Transport</p> <ul style="list-style-type: none"> ➤ Expand and develop the railway network as the core mode of transportation in the country to optimize on land use, limit pollution, reduce road degradation, maximize on freight and passage carriage and improve efficiency and facilitate the trans-shipment of heavy and hazardous goods. ➤ Link all major urban centres within the railway corridor via modern railway network with the rail stations acting as focal points for community and transportation activities.

		<ul style="list-style-type: none"> ➤ Link the priority routes for implementation of the modern railway system of Mombasa- Nairobi link, Nairobi-Malaba and Nakuru-Kisumu with connectivity to Uganda and Rwanda <p>Road Transport</p> <ul style="list-style-type: none"> ➤ Provide access and linkage, between county headquarter(Kisumu city) ; and sub county headquarters and for local access and link them to national transportation corridors ➤ Expand all roads connecting county headquarters to at least 60m and developed to bitumen standard (tarmac). ➤ Expand all roads connecting county headquarters to sub-county headquarters to at least 30m and developed to bitumen standard. ➤ Develop roads connecting infrastructure installations of national importance and resource areas to bitumen standard.
	<p>An efficient and affordable Mass Public Transport for all urban areas in the country shall be developed</p>	<ul style="list-style-type: none"> ➤ Adopt transit oriented development in the planning, design and development of all public urban transport. ➤ Integrate land use with urban transport planning for all urban areas. ➤ Design and develop integrated transport networks that considers all different modes of transport ➤ Develop an integrated mass rapid transit system (Commuter rail service and bus rapid transit) for Nairobi, Mombasa and Kisumu ➤ Prioritize public transport while planning for urban transportation and progressively promote a modal split of 50:50 ➤ Undertake research in the county on the optimal modal split for various categories of urban centres ➤ Designate, harmonize and regulate terminal, interchange and pick-up and drop-off facilities and digitize travel schedules and routes in all such facilities in the county

		<ul style="list-style-type: none"> ➤ Construct ring roads in main urban centres to divert through traffic from the CBDs ➤ Adopt the following bus traffic management measures in planning and design of the public transport system: <ul style="list-style-type: none"> - Defined bus routes and time schedules - Cashless fare system - Designated bus lay bays ➤ Configure urban based activities to support mass transit systems and reduce the need for travel ➤ Establish a comprehensive transport management information system for all transport modes.
	<p>An urban transport policy that facilitates an integrated, balanced and environmentally sound urban transport system in which all modes efficiently play their roles shall be developed</p>	<ul style="list-style-type: none"> ➤ Develop a public transport policy to regulate planning and management of public transport ➤ The county government to develop policies to limit use of private transport and maximize on public transport ➤ Develop a main public transport termini in all major urban areas and county headquarter(Kisumu) to cater for all the various transport modes, including NMIMTs(Non-Motorized and Intermediate Means of Transport) to enhance efficiency and connectivity between transport modes ➤ County government to provide a framework for development and management of public service termini by the private sector through public private participation in all urban areas ➤ Plan, construct and manage designated terminal facilities in the periphery of the urban areas to accommodate parking spaces for the private vehicles and interchange to the public transport system

		<ul style="list-style-type: none"> ➤ Plan and develop satellite towns to complement and decongest major urban areas ➤ Incorporate an integrated transport network in county urban development plans ➤ Implement a 24-hour economy to distribute traffic flows on urban roads, alter working shifts and save on cost of travel time ➤ County government to identify, plan and control developments in the satellite towns ➤ The County government to identify, designate, close and regulate roads to be used by hawkers to display their wares on chosen days and times to decongest the CBDs ➤ Designate, plan and regulate strategic areas for taxis operation in all urban areas to enhance safety and order
	<p>Environmental conservation shall be upheld in the planning, development and management of the transportation network</p>	<ul style="list-style-type: none"> ➤ Construction and management of the transport network to abide by environmental regulations and standards. ➤ The integrated transport master plan, regional, county and local spatial plans to provide guidelines to regulate environmental conservation in the development and maintenance of the transport network ➤ All transport network providers to implement international environmental legislation/ agreements ; the Clean Air Initiative resolutions that commit African countries to adopt less polluting fuels ➤ Enforce emission testing in all transport modes and set standards and guidelines for decommissioning of vehicles ➤ Promote the use of green energy in all transportation systems

<p>Providing Appropriate Infrastructure</p>	<p>Safe, adequate, reliable and affordable electricity for both urban and rural settlements shall be provided</p>	<ul style="list-style-type: none"> ➤ Tap into solar production in the County to the National grid ➤ Provide safe connections for all settlements in urban areas for safety by developing policy models that aim to be pro-poor by increasing sensitivity to low-income urban residents ➤ Mainstream and enforce green energy options in the design of buildings ➤ Support the flagship projects that are geared towards increasing electricity supply from both renewable and non-renewable sources
	<p>Expansion and improvement of water reticulation systems to facilitate the access to clean, safe, adequate, reliable and affordable water in human settlements shall be promoted</p>	<ul style="list-style-type: none"> ➤ Construct and rehabilitate water supply systems in the county ➤ Incorporate water provision in all physical development plans ➤ Rehabilitate, restore and protect all water sources in the county ➤ Construct dams in the County to enable development of the national rainwater harvesting strategy and develop water storage investment plans for all the villages and urban centres; and revision of building by-laws to require all new developments to have rain water harvesting to improve water supplies in the major urban towns and surrounding satellite towns ➤ Construct two multipurpose dams in Nzoia and Nyando; development of national rainwater harvesting strategy and water storage investment plans for all the villages and urban centres; and revision of building by-laws to require all new development to have rain water harvesting. ➤ Improve water supplies in the major urban towns of Nairobi, Mombasa Kisumu, Nakuru and their surrounding satellite towns. ➤ Build water kiosks and yard taps, develop water supply pipeline systems and sewers, and a comprehensive mapping of all water supplies systems in the informal settlements

		<ul style="list-style-type: none"> ➤ Build sewer in the urban areas and carry out a comprehensive mapping of all water supplies systems in the urban and rural settlements
	<p>A globally competitive, accessible and affordable education, training and research facilities shall be promoted</p>	<ul style="list-style-type: none"> ➤ All universities and other tertiary institutions in the county to invest in research, technology & innovation ➤ Expand access and equity, improve quality and relevance and invest in human resource by enhancing institutionalization of excellence and increasing the level of research funding ➤ Restructure higher education institutions to offer courses based on regional endowment to promote competitiveness and regional balance ➤ Mainstream ICT in higher education and training to provide online content to increase access ➤ Develop and upgrade physical infrastructure in all educational institutions to increase their capacity ➤ Promote the delivery of education and training system that is internationally competitive.
	<p>A network of functional, efficient, safe, accessible and sustainable national health referral infrastructure shall be established.</p>	<ul style="list-style-type: none"> ➤ Increase the utilization of services at lower levels of the health services and reduce self-referral to the higher levels of care; ➤ Develop the service provider's capacity to offer services and appropriately refer at each level of the healthcare system ➤ Improve the system's ability to transfer clients and specimens between the different levels of the health care system ➤ Improve reverse referral and feedback information systems ➤ Improve preparedness and response to emergencies and disasters ➤ Strengthen outreach systems for provision of health services to marginalized and vulnerable population

		<ul style="list-style-type: none"> ➤ Provision of quality emergency health services at the point of need ➤ Establish fully fledged low – cost diagnostic centres and provide adequate screening and treatment facilities for persons with chronic or terminal conditions, including cancer, diabetes and kidney failure at Jaramogi Oginga Odinga Referral hospital ➤ Modernize all health facilities in the County through improvement of infrastructure and hospital equipment
	<p>Appropriate, quality, efficient and cost effective ICT infrastructure in both rural and urban areas shall be promoted</p>	<ul style="list-style-type: none"> ➤ Integrate e-youth ICT platforms -The sub-sector will establish a youth portal to enhance information access by the youth ➤ Develop and upgrade ICT Infrastructure in the county ➤ Extend ICT infrastructure to cover all the rural and local growth centres ➤ Mainstream use of ICT in all levels of government and the private sector (e-government)
	<p>The expansion of sewerage systems and waste management facilities shall be promoted to improve sanitation in human settlements</p>	<ul style="list-style-type: none"> ➤ Service all urban settlements by a centralized sewerage treatment system and solid waste disposal facilities ➤ Expand the sewerage coverage and capacity for the major urban areas of the county to improve the quality of life of the residents ➤ Based on initiatives by Kenya Informal Settlement Improvement Project (KISIP) Informal settlements need to be provided with basic infrastructure services in order to improve the quality of life of low-income urban residents including; Manyatta, Nyalenda, Obunga, Nyamasaria and Kondele among others. ➤ Apply appropriate technology solutions to sewerage treatment in rural and low density housing areas

		<ul style="list-style-type: none"> ➤ All spatial plans to make provision for development of sewer systems and treatment works and solid waste disposal sites ➤ Expansion of urban boundaries to be guided by investment in infrastructural services ➤ Enactment of laws in the county to incorporate private public partnerships in infrastructure investments ➤ Adopt appropriate technology to facilitate reduction, recycle and reuse of waste (3R's) ➤ Undertake rehabilitation of storm water drainage systems in all urban areas ➤ Construct waste water treatment plants and solid waste management projects in well-established permanent settlements in the county
	<p>Sporting infrastructure shall be planned, developed, maintained and the existing rehabilitated to promote sports development</p>	<ul style="list-style-type: none"> ➤ Establish County Sports Talent Centers to act as feeds to the international centre to scout, nurture and develop sports talents ➤ Build at least one national stadium in the town of Kisumu ➤ Rehabilitate the county stadium to international standards to enable the youth to actively develop and tap the immense talent in sports
<p>Towards a Rapidly Industrializing Nation</p>	<p>The cluster development strategy shall be promoted to focus on proximity to raw materials and markets of region specific products</p>	<ul style="list-style-type: none"> ➤ Concentrate urban-based industries in t Kisumu and other major towns in the county. ➤ Locate agro-based industries in the agriculturally productive areas of the County ➤ Mineral-based industries to be located in-situ where the minerals are found like Homaline for limestone. ➤ Locate cottage industries and crafts in-situ ➤ Promote value addition in processing of local produce

	<p>Specific sites for industrial development shall be identified, planned and serviced with the appropriate infrastructure</p>	<ul style="list-style-type: none"> ➤ Plan and set aside land for industrial development in the county ➤ Develop SME and Industrial Parks in the county ➤ Integrate the industrialization process and environment conservation ➤ Provide an integrated, efficient, reliable and sustainable road transport infrastructure ➤ Provide efficient airport facilities to facilitate quick delivery of produce and perishable products ➤ Modernize the port of Kisumu to international standards ➤ Increase availability of clean water and improve sanitation in the county ➤ Discharge of safe/ clean industrial waste into water bodies shall be encouraged ➤ Encourage adoption and utilization of ICT in the county to enhance the county's transformation towards an advanced Information Society
	<p>Adequate and affordable energy supply for the industrial sector shall be provided</p>	<ul style="list-style-type: none"> ➤ County government to advocate for provision of reliable energy infrastructure by National government extending the national grid network ➤ Expand, modernize and upgrade electricity generation and supply ➤ Adopt renewable energy generation programmes by provision of incentives and enforcement of building laws requiring utilization of renewable energy ➤ Incentivize large industries to promote co-generation of power ➤ Promote the adoption of energy efficient technologies to lower the demand for energy

Source: State Department of Physical Planning, 2022

Map 3 below shows the NSP proposals for the Kisumu County

Map 3: NSP Proposals for Kisumu County



Source: State Department of Physical Planning, 2022

5

5 IMPLEMENTATION AND ADOPTION OF THE GUIDELINES

5.1 Overview

The implementation framework identifies activities and further ties them with responsible actors, resources and timeframes adequate for their execution. It constitutes a deliberately established method, means or system of ensuring that the policies, strategies and measures outlined in the guidelines are continuously and consistently executed to achieve their objectives.

To effectively implement the guidelines, the various sectors, actors and levels of planning have been identified and have to work together and the mandate of the sectors at the National and County levels of planning have to be integrated.

5.2 Implementation Approaches

The County Specific Guidelines will be implemented through various approaches including:

1. Preparation of spatial plans to integrate and conform to the proposals of the County Guidelines. The plans include:
 - Inter-County Physical and Land Use Development Plans for Metropolitan regions, conservation zones, river basins, water towers, coastal ecosystems, trans-boundary resource areas and transport corridors, among others.
 - County Physical and Land Use Development Plans.
 - Local Physical and Land Use Development plans for Cities, Urban areas, special area plans, subject plans and detailed neighbourhood plans, among others.
 - Sectoral plans
2. Integration of the guideline policies, strategies and measures into the County sector plans, programs and projects. Ministries, Departments and Agencies (MDAs), County and National Departments identified in the plan to administer the policies, strategies and measures are required to translate them into action plans, programmes and projects and to include them in their subsequent sector plans.

3. Formulation of policies, regulations and standards to guide development control

5.3 Implementation Framework

The implementation of the various policies, strategies, measures, programmes and projects under these Guidelines will involve a wide range of actors. It will require a coordinated approach and partnership between the National and County Governments and non-state actors. It may require re-engineering of institutions and a number of actors to undertake the implementation through a harmonized approach.

The National Spatial Plan identified a multi-leveled framework for implementation of the plan that incorporates all levels of actors. In this regard, the institutions identified in the NSP to undertake implementation of the plan at County-level shall also be mandated to ensure implementation of this Guidelines.

The following are the Institutions mandated to ensure implementation of the County Specific guidelines;

5.3.1 County Physical Planning Committee

The role of the County Planning Committee shall be to ensure aspirations of the guidelines are articulated in preparation of the County Spatial Plans, County Integrated Development Plans and Local Physical and Land Use Development Plans.

The composition of this committee consists of;

- i. The Governor who will be the Chairperson,
- ii. the Deputy Governor,
- iii. the County Executive Committee Members from various sectors
- iv. Directors from various relevant County Departments including Lands and Physical Planning, Economic planning, Agriculture, Industrialization, Tourism, Environment, Transport and Infrastructure

The functions of the committee include;

- 1) To promote effective integration between physical, economic and sectoral planning within the framework of county development policies.
- 2) To provide policy guidance for the implementation of strategic spatial projects
- 3) To ensure that the guidelines policies and measures are mainstreamed in the various county plans.
- 4) To mobilize resource for implementation of the Guidelines.

5.3.2 County Planning Unit (CPU)

The technical Unit shall provide technical support to the various implementing County departments on issues relating to physical planning.

The CPU shall;

- i. Monitor the Implementation of the guidelines.
- ii. To disseminate components of the guidelines to the various county departments.
- iii. Update the County Physical Planning Committee on a regular basis on the implementation of the guidelines.

The County Director of Physical Planning shall be responsible for preparation of an annual state of planning report which shall among other things appraise the status of implementation of the guidelines.

5.3.3 National Land Commission

The National Land Commission shall play its oversight role in land use planning to ensure efficient implementation of the NSP and the guidelines. Other functions of the Commission in the implementation of the NSP and the guidelines include the following: - To formulate mechanisms and parameters for monitoring and overseeing land use planning.

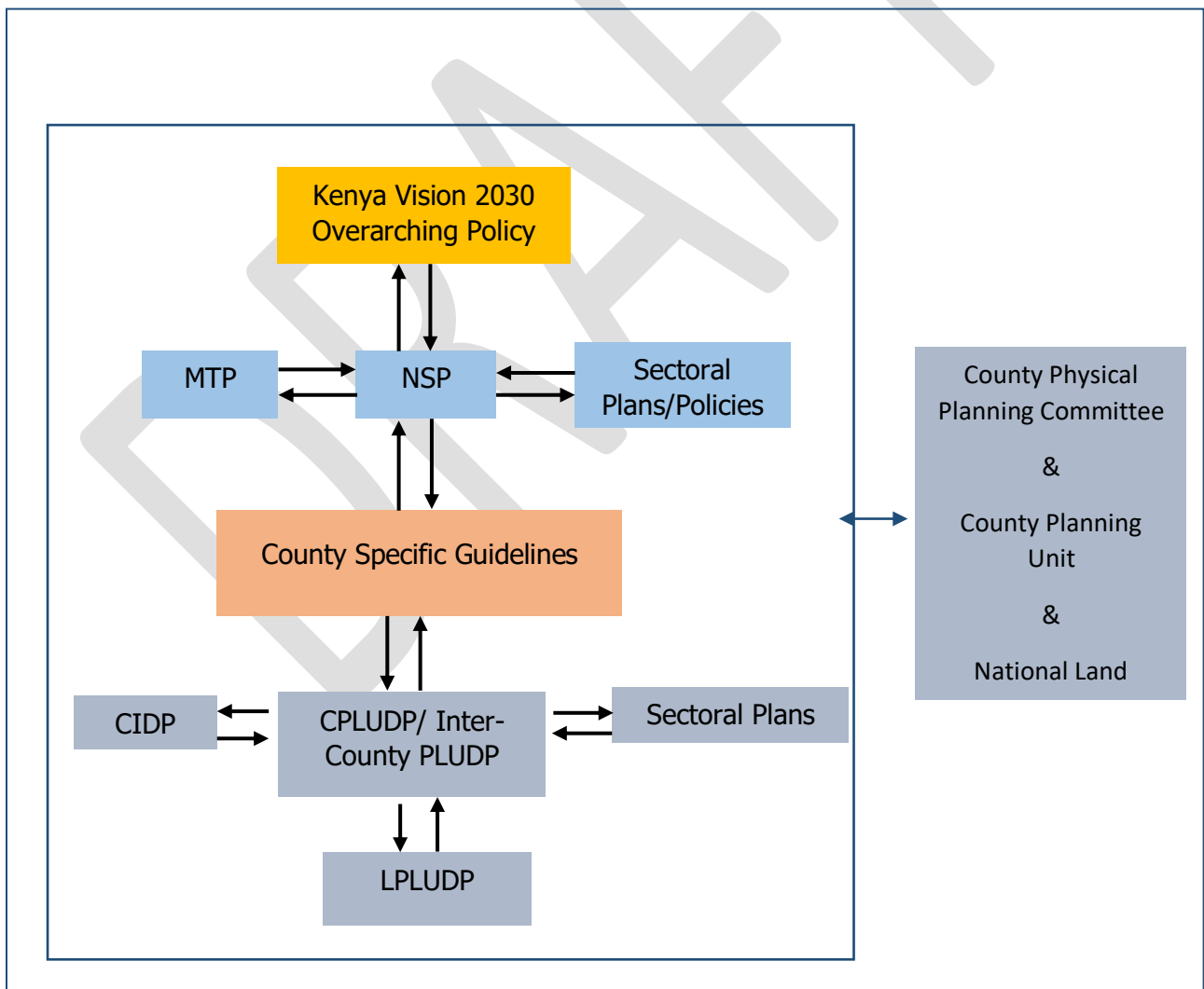
- i. To ensure that relevant planning authorities carry out their functions as required by law.
- ii. To make recommendations for improvements of the planning systems in the county.
- iii. To mobilize resources to support physical/land use planning.

5.4 Monitoring and Evaluation

Implementation of the guidelines will be monitored and evaluated to measure both outputs and outcomes and ensure that the intended actions are implemented in a timely manner. To facilitate attainment of the objectives of the guidelines, performance indicators will be developed by the County Physical Planning Department for efficient monitoring. Periodic reports will be prepared in relation to progress being made in their implementation.

The graphic below illustrates the implementation structure for County Specific guidelines.

Figure 4: Implementation structure of the guidelines



Source: State Department for Physical Planning, 2022

5.5 Conclusion

The application of these guidelines will be undertaken by a number of actors and hence the need for a coordinated approach. The lead agency will be Kisumu County Government which will be responsible for implementing various county specific initiatives proposed by the guidelines.

The National Government, County Government of Kisumu, the private sector and the general public will be critical in actualizing the objectives of these guidelines. The County Physical Planning Committee shall develop a communication strategy to enhance the synergies.

The National Department of Physical Planning shall undertake sensitization, training and capacity building of the County Government and National Government institutions and agencies that will be involved in the implementation of these guidelines. Special attention will be given to the County physical planning units, as they will be expected to provide technical expertise in the implementation of the County specific policies and strategies.