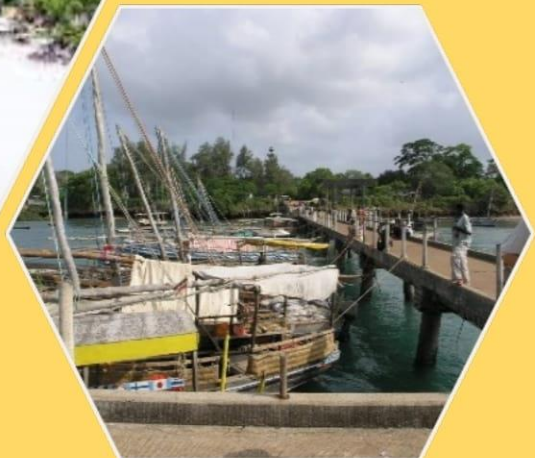




NATIONAL SPATIAL PLAN IMPLEMENTATION GUIDELINES FOR KWALE COUNTY

Optimal Productivity, Sustainability, Efficiency and Equity in the use of our
Land and Territorial Space



MINISTRY OF LANDS AND PHYSICAL PLANNING
STATE DEPARTMENT FOR PHYSICAL PLANNING

© 2022

FOREWORD

The Constitution of Kenya apportions responsibility of planning to both National and County Governments. Under the Fourth Schedule on distribution of functions, Part 1 (21) and (32) mandates the National Government with the responsibility of formulating general principles of land planning, co-ordination of planning by the Counties, capacity building and technical assistance to the Counties. On the other hand, Part 2(8) allocates the function of County planning and development to County Governments. It is under these provisions that the County specific guidelines have been prepared.

The Department of Physical Planning prepared the National Spatial Plan (NSP) in response to the Kenya Vision 2030 to guide the spatial development of the country over a period of 30 years beginning in 2015.

It aims at achieving an organized, integrated, sustainable and balanced development of the country by providing a framework for better national organization and linkages between different activities within the national space.

To implement the Plan, the Counties are expected to play a key role by mainstreaming strategies, policies, and measures identified in the NSP into the County spatial planning systems.

The guidelines have identified planning policies, strategies, and measures that Plans at the County level are expected to mainstream and propagate. The policies address among others, the protection of rich agricultural land, development imbalances, conservation of environmentally sensitive areas, urban containment, and promotion of industrial development.

The guidelines provide direction on the existing potentials, the opportunities, the constraints/challenges inhibiting harnessing of the potentials, the strategies to apply, respective policies required, and the necessary measures to achieve optimal productivity, sustainability, efficiency and equity in the use of county land resources.

The guidelines are an opportunity on how best to refocus, vary and complement areas that require different approaches responding to country-specific needs and promote the livelihoods of their people, while contributing to the national aspirations of vision

2030, regional objectives of the Africa Agenda 2063, and international targets of sustainable development. The refocusing will also be handy in reviewing and making decisions on NSP which is due for review in 2025.

These guidelines are therefore a tool for enhancing this critical path and provide a direction for development planning by the Counties as they discharge their responsibility of preparing county and local physical and land use development plans. The guidelines will also ensure that the County Integrated Development Plans conform to the proposed County specific policy guidelines and measures.

DRAFT

PREFACE

The National Spatial Plan (NSP) recognizes that Kenya is greatly endowed with massive and diverse resources distributed over the national space that require an integrated and coordinated approach for optimal productivity and sustainability.

The County Specific Guidelines have been derived from the National Spatial Plan and provide a planning framework for the integration of the NSP into the county spatial planning system. They are clear statements linking the National Spatial Plan to Inter-County, County and lower-level Physical and Land Use Development Plans and provide clarification on the anticipated sustainable development outcomes of implementing the Plan.

The County Government will adopt, develop and implement their plans based on the policies, strategies, and measures articulated in the guidelines. The realized county plans are expected to guide, harmonize and facilitate development within the county, hence contributing to the overall implementation of the NSP.

The guidelines also form an efficient compass and monitoring tool for National and County Governments to jointly pursue sustainable planning and appropriate implementation mechanisms.

For the county to be nationally competitive, there is need to balance development and promote optimal utilization of land and land-based resources as well as cultivate an integrated approach in addressing the intertwined challenges of regional imbalances/inequalities, rural development, underutilization of the available resources, uncontrolled urbanization, environmental degradation and inefficient transportation. It is imperative therefore, to prioritize the implementation of this strategic document so as to promote balanced development and competitiveness across the County.

EXECUTIVE SUMMARY

The County Specific Guidelines seek to facilitate the implementation of the National Spatial Plan by outlining policies, strategies and measures to guide County spatial planning and development and promote optimal productivity, sustainability, efficiency and equity in the use of land. They provide a framework for preparation of lower level Plans including Inter-County, County and Local Physical and Land Use Development Plans.

The disconnect between National and County Spatial Planning and development has resulted in uncoordinated and unbalanced development, therefore creating a need for a clear structure that links National, Regional and Local planning and development. This is achievable through integration of the policies, strategies and measures proposed by the guidelines into County Spatial Plans, Programs and Projects, to tackle challenges of unbalanced regional development, urbanization, national competitiveness and unsustainable use of land and natural resources.

The County Specific Guidelines are organized into five chapters detailing various facets. Chapter one provides an overview, purpose and justification of preparation of the guidelines. It also outlines the objectives that the guidelines intend to achieve and details the preparation process as well as intended users. This chapter highlights the key principles that form the basis for preparation of lower level plans including public participation, livability, sustainable development, urban containment, smart urban growth among others.

Chapter two details the legal and policy provisions that the guidelines are anchored upon. They include, among others, The Constitution of Kenya, 2010, The Physical and Land Use Planning Act No.13 of 2019, County Government Act, 2012, Environmental Management and Coordination (Amendment) Act, 2015, Sessional Paper No. 01 of 2017 on National Land Use Policy and Sessional Paper No. 10 of 2012 on Kenya Vision 2030.

The third chapter analyses the county profile, detailing its location, size, bio-physical characteristics, socioeconomic status and the County's comparative advantage in relation to others. The locational context provides information on the geographical position and bordering Counties while the biophysical context discusses the

topography, hydrology and climate. The socioeconomic status indicates key economic drivers of the County and its population and demographic structure.

Chapter four presents the County specific issues and proposes development strategies to promote national competitiveness, optimal use of land and resources, rural development, balanced intra-county development and urbanization.

Additionally, it provides policy guidelines and measures for County advancement.

The final chapter five focuses on implementation and adoption of the guidelines. The implementation framework identifies institutions, County development programs and projects, and further ties them with responsible actors, resources and timeframes for effective execution. It proposes a framework for ensuring that the outlined policies, strategies and measures are adequately implemented.

DRAFT

TABLE OF CONTENTS

FOREWORD.....	i
PREFACE	iii
EXECUTIVE SUMMARY.....	iv
1 INTRODUCTION	1
1.1 Background	1
1.2 Purpose.....	1
1.3 Objectives	2
1.4 Scope.....	2
1.5 Justification	3
1.6 Application of the Guidelines	3
1.7 Process of Preparing the Guidelines	4
1.8 Targeted Users of the Guidelines.....	5
1.9 Key Principles	6
2 POLICY, LEGAL AND PLANNING FRAMEWORK FOR THE GUIDELINES	8
2.1 Constitutional Context	8
2.2 Policy Context.....	8
2.2.1 Sessional Paper No. 10 of 2012 On Kenya Vision 2030	8
2.2.2 Sessional Paper No. 1 of 2017 On National Land Use Policy	8
2.3 Legal Context	9
2.3.1 The Physical and Land Use Planning Act, 2019	9
2.3.2 County Governments Act, 2012	9
2.3.3 The Urban Areas and Cities (Amendment) Act, 2019	9
2.3.4 Environmental Management and Co-ordination (Amendment) Act, 2015	9
2.3.5 National Land Commission Act, 2012	10
2.4 Planning Context.....	10
2.4.1 National Spatial Plan (NSP)	10
2.4.2 NSP linkage to other plans	11
3 COUNTY PROFILE.....	13
3.1 Overview.....	13
3.2 Location Context.....	13
3.3 Bio-Physical Context	13
3.3.1 Physical and Topographic Features.....	13
3.3.2 Ecological Conditions	16
3.3.3 Climatic Condition	16
3.3.4 Vegetation and Wildlife.....	17

3.4 Socio-Economic Status.....	17
3.4.1 Population and Demography	17
3.5 Infrastructure.....	18
3.6 Economy.....	18
3.7 Comparative Advantage.....	21
4 DEVELOPMENT STRATEGIES AND POLICY GUIDELINES FOR KWALE COUNTY	22
4.1 County Specific Issues and Development Strategies	22
4.2 National Spatial Plan Policy Guidelines for Kwale County.....	34
5 IMPLEMENTATION AND ADOPTION OF THE GUIDELINES.....	52
5.1 Overview.....	52
5.2 Implementation Channels	52
5.3 Implementation Framework	53
5.3.1 County Physical Planning Committee.....	53
5.3.2 County Planning Unit (CPU)	54
5.3.3 National Land Commission	54
5.4 Monitoring and Evaluation.....	54
5.5 Conclusion.....	57

DRAFT

List of Tables

Table 1: Targeted Users of the County Specific Guidelines.....	5
Table 2: Agro-Ecological Zones and their agricultural potential.....	16
Table 3: Kwale County Population Projection.....	17
Table 4: County Specific Issues and Development Strategies.....	22
Table 5: NSP Policy Guidelines and Measures for Kwale County.....	34

List of Figures

Figure 1: The Scope of the Guidelines.....	3
Figure 2: Policy Focus of the NSP.....	10
Figure 3: National Spatial Plan Linkage to Other Plans.....	12
Figure 4: NSP Implementation structure of the guidelines.....	56

List of Maps

Map 1: Kwale County Location Context.....	15
Map 2: The Existing Situation in Kwale County.....	20
Map 3: NSP Proposal for Kwale County.....	51

DRAFT

1 INTRODUCTION

1.1 Background

The County Guidelines set out policies, strategies and measures that will guide the long-term spatial development of the county for a period of 30 years. They cover the entire county and defines the general trend and direction of its spatial development.

The guidelines have been developed in line with the four thematic areas as outlined in the NSP. They provide a guide to the Planning Authority at the county on how to incorporate the NSP policies, strategies and measures during the preparation of County Spatial Plans and other lower-level plans like the Local Physical and Land Use Development Plans consequently implementing the NSP.

The NSP County Specific implementation guidelines summarize the County's existing potentials and opportunities, the constraints (challenges) inhibiting harnessing of the potentials, the applicable strategies and respective policies required, and the necessary measures to achieve optimal productivity, sustainability, efficiency and equity in the use of the county land resources. They act as a reference point.

1.2 Purpose

The purpose of the County Specific Guidelines is to provide a planning framework for mainstreaming of the National Spatial Plan to the County spatial planning system.

The guidelines are intended to assist the County enhance the implementation of the NSP by linking the proposed county specific policies, strategies and measures into the County plans, programs and projects while putting measures in place for achieving them. The guidelines inform preparation of various County Physical Plans such as the County Physical and Land Use Development Plans.

For optimal implementation of these plans, a County Integrated Development Plan (CIDP) is essential since it is a sectoral and budgetary based plan that draws its implementation programs and projects from the County Physical Plans

1.3 Objectives

The guidelines provide policies and strategies to deal with challenges of regional imbalances/inequalities, rural development, underutilization of the available resources, urbanization, environmental degradation and inefficient transportation.

Specific objectives include;

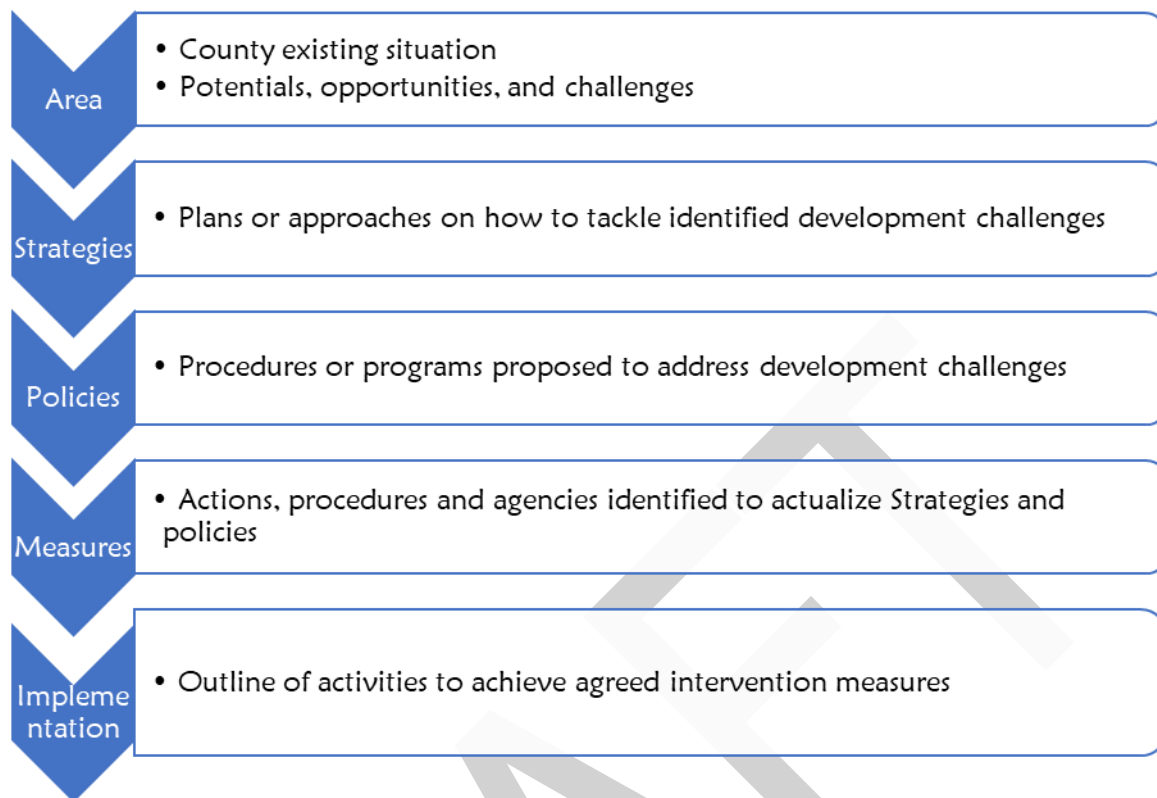
- To sensitize the County on the provisions of the NSP
- To promote synergy between National and County planning
- To guide the County, implement the NSP
- To clarify the roles of the different actors in the implementation of the NSP.

1.4 Scope

The guidelines and strategies are specific to Kwale County and cover the entire territory of the County measuring approximately 8,270.2 Km² and covers approximately 110 kilometers of the coastal strip. The guidelines highlight key facets including the identified issues, the actions, approaches, plans and procedures prescribed to address the issues, and an outline of activities to execute the agreed interventions as captured in the National Spatial Plan. The guidelines shall be operational until the year 2045

Kwale County will have its specific guidelines and strategies as captured in the NSP and indicated in Figure 1 below:

Figure 1: The Scope of the Guidelines



Source: State Department for Physical Planning, 2022

1.5 Justification

Preparation of County Physical and Land Use Plans which is a mandate of the counties has been slow and, in some counties, has not begun at all. These guidelines are therefore a quick reference on how Kwale County can optimize land even in the absence of this plans.

Implementation of NSP since its approval and launch has been undertaken in an uncoordinated manner hence the guidelines will provide standardized approach for all counties.

The guidelines are a tool for implementation of the NSP, and a basis for preparation of a monitoring and evaluation framework to track NSP implementation both at national and county levels.

1.6 Application of the Guidelines

The guidelines and strategies will be used or applied in the following ways to achieve a more sustained and coordinated development of the County;

- To effectively coordinate planning between the National and the County Government;
- To improve county government capacity to formulate, coordinate and implement integrated development policies and programmes to address spatially unbalanced development;
- To inform strategic infrastructure policy and public investment decisions which support the achievement of balanced development in the County;
- To strengthen county inter-sectoral co-ordination within a spatial framework and provide the private sector with a clear context in which they can make investment decisions;
- To optimize the use of land and natural resources by providing a framework for making sustainable locational choices for sustainable development and conservation of land productivity in the County.

1.7 Process of Preparing the Guidelines

The process involved reviewing the National Spatial Plan and identifying key issues, spatial policies, development strategies and measures specific to Kwale County. These key issues, spatial policies, development strategies and measures will be realized through preparation of County and other lower-level plans.

Research was undertaken on various thematic areas to enrich the County specific issues and development strategies as well as policy guidelines and measures/interventions. Further, preparation of the guidelines considered the constitutional, policy and legal provisions on physical and land use planning. Expert opinion was sought on the identified issues, policies, measures and strategies for implementation viability.

The preparation of the guidelines was identified as one of the implementation tools of the NSP, in which key NSP issues, policies, strategies and measures were translated into specific action plans, programs and projects at the County level.

1.8 Targeted Users of the Guidelines

Table 1 below indicates, among others, the targeted users of the guidelines and the respective application;

Table 1: Targeted Users of the County Specific Guidelines

User	Application
County Executive Committee Member in charge of Physical and Land Use Planning	<ul style="list-style-type: none"> • Preparation of County and lower-level plans • Linkage of planning structures • Quality control of the various county plans • Formulate county planning policies and strategies • Establish county planning institutions • Coordinate and implement county plans and policies
The County Director of Physical and Land use planning	<ul style="list-style-type: none"> • Advising the County government on the impact of the County specific guidelines to the County • Preparation of County physical and land use development plans and other lower-level plans • Formulating county physical and land use planning policies, guidelines, strategies, and standards; • Issuance of development permission and other development control instruments under The Physical and Land Use Planning Act, 2013.
Licensed physical and land use planners both in public and private sectors	<ul style="list-style-type: none"> • Prepare, coordinate and implement Physical and Land Use Plans • Quality control of plans and consultancy services • Formulate policies, strategies and development guidelines • Dispute resolution
County assembly	<ul style="list-style-type: none"> • Approval of planning budgets • Vetting of various county plans • Formulation and passing of county planning legislation • Enhance capacity to oversee the executive on spatial planning
Ministries, Departments And Agencies	<ul style="list-style-type: none"> • Development of relevant policies, strategies, standards, guidelines, programmes, and projects • Understand processes, procedures and linkages in spatial planning requirements
National Land Commission (NLC)	<ul style="list-style-type: none"> • Oversight role in Land Use planning to ensure efficient implementation of the NSP • Ensure relevant planning authorities carry out their functions as required by law
Practitioners in the built environment	<ul style="list-style-type: none"> • Advance of relevant policies, strategies, standards, guidelines, programmes, and projects

	<ul style="list-style-type: none"> • Apply processes, procedures and linkages of the NSP in their respective areas of practice
Community, developers and investors	<ul style="list-style-type: none"> • comprehend the processes, procedures and requirements of various County Plans and policies • Linkages of spatial planning and implementation • Informed investment decisions
Development partners	<ul style="list-style-type: none"> • Reference frame for funding spatial planning activities • Understand planning linkages and implementation • Informed development decisions
Training institutions	<ul style="list-style-type: none"> • Compliment the curriculum for training of spatial planners • Understand the planning procedures and processes

1.9 Key Principles

The guidelines were prepared based on the outlined principles as applied in the NSP. The principles should guide sustainable, coordinated, and realistic development, and form the basis upon which the lower-level Physical and Land Use Plans shall be prepared. The principles are;

1. **Effective Public participation/engagement:** All plans shall be prepared in a participatory and consultative manner with relevant stakeholders and sectoral actors.
2. **Urban containment/Compact cities:** Local plans shall strive to limit and control urban growth within the set urban boundaries to protect rich agricultural land, mitigate urban sprawl and reduce cost of infrastructural provision.
3. **Liveability:** The planning of urban areas shall enhance the liveability index in the area of housing, environment, transportation, health, and social engagement. The urban areas must be economically viable, socially inclusive and ecologically sustainable.
4. **Smart and green urban growth:** Plans shall promote sustainable use of energy, creation of green spaces, reduce the need for car travel, and promote use of local materials, support businesses, protection of heritage and creation of unique character.
5. **Sustainable development:** Balancing social, economic and environmental dimensions of development and catering for current and future generations.
6. **Promotion of ecological integrity:** Plans shall promote the protection and conservation of environmentally sensitive areas.

7. **Promote public transportation:** Favour public transportation over private transport to ensure efficiency and functionality of urban places.
8. **Balanced development:** Plans to ensure there/ is balanced development in the County to cure inequalities.

DRAFT

2 POLICY, LEGAL AND PLANNING FRAMEWORK FOR THE GUIDELINES

2.1 Constitutional Context

The formulation of these guidelines took into account the Constitution of Kenya 2010 aspirations and Principles. Article 66 of the Constitution of Kenya 2010 gives the State powers to regulate the use of any land and property in the interest of land use planning, among others. The Fourth Schedule of the Constitution assigns the National Government the role of capacity building and technical assistance to the counties. The guidelines are therefore within and in response to the aspirations, values and principles as provided for in the constitution.

2.2 Policy Context

2.2.1 Sessional Paper No. 10 of 2012 On Kenya Vision 2030

Kenya Vision 2030 is the overarching national development framework which all plans should be aligned to. The preparation of all Physical and Land Use Plans should take cognizance of the aspirations, foundations and development concepts of the vision. The preparation of the first National Spatial Plan is identified in Kenya Vision 2030 as a flagship project and is regarded as one of the foundations for socio-economic transformation. Hence the need for linkage between national planning and county planning which can be achieved through mainstreaming NSPs into CSPs and other lower-level plans by preparing NSP county specific guidelines to implement the NSP at lower levels.

2.2.2 Sessional Paper No. 1 of 2017 On National Land Use Policy

The policy was formulated to address the various challenges related to land use and ensure efficient, productive and sustainable use of land. The main goal of the policy is to provide legal, administrative, institutional and technological framework for optimal utilization and productivity of land related resources in a sustainable and desirable manner at national, County and community levels.

The policy recommends the preparation of a National Spatial Plan to provide an integrated framework for the development of the country including guidelines for sustainable rural and urban planning management. The policy also provides for the preparation of planning guidelines, policies and standards to be observed by County Governments and other sectoral agencies within the frameworks of approved physical

and land use development plans. These guidelines have been prepared on this basis and they

2.3 Legal Context

Various Acts of Parliament are in place to provide the legal framework for the implementation of the mandate provided for in Article 66 of the Constitution. The Physical and Land Use Planning Act, 2019, The Urban Areas and Cities (Amendment) Act, 2019, County Governments Act No. 17 of 2012, The Land Act No. 6 of 2012, National Land Commission Act No. 5 of 2012 among others. The NSP County specific guidelines are prepared in this context and meet this criterion

2.3.1 The Physical and Land Use Planning Act, 2019

This is the overarching statute that provides for formulation of both national and County physical and land use planning policies, guidelines and standards. The Act further provides for administration, types, content, process and approval of the various types of Physical and Land Use Development Plans.

2.3.2 County Governments Act, 2012

This statute mandates County Governments to carry out the planning function at the County level. The guidelines enhance the capacity to prepare the various county level plans that meet the recommended quality and standards.

2.3.3 The Urban Areas and Cities (Amendment) Act, 2019

The statute provides for classification of urban areas and cities, their governance and management, and for integrated development planning. The guidelines are a basis for preparation of these lower-level plans.

2.3.4 Environmental Management and Co-ordination (Amendment) Act, 2015

The Act provides for the establishment of an appropriate legal and institutional framework for the management of the environment as well as guidelines relating to environmental management and prevention or abatement of environmental degradation. The guidelines take cognizance of this Act and will be implemented within the framework.

2.3.5 National Land Commission Act, 2012

Mandates the National Land Commission with the management and administration of public land on behalf of the National and County Government, and the monitoring and oversight of physical and land use planning in the country. The guidelines fall within the ambit of this statute and will facilitate their oversight responsibilities.

2.4 Planning Context

2.4.1 National Spatial Plan (NSP)

The National Spatial Plan (NSP) covers the whole Country encompassing the forty-seven (47) counties and the Exclusive Economic Zone. The NSP outlines policies and strategies geared towards influencing desired future distribution and organization of population and activities outlined in vision 2030 and sectoral policies and plans. It aims at achieving economic efficiency and balanced development. The various county Physical and Land Use Plans should be aligned to the policies outlined in the NSP.

Figure 2: Policy Focus of the NSP



Source: National Spatial Plan, 2015-2045

To actualize the NSP a comprehensive implementation strategy has been proposed that embraces a multiplicity of actors including National Government Ministries, Departments and Agencies, County Governments and the National Land Commission.

The strategy proposes the establishment of the following institutions as key in the implementation of the Plan; The National Physical Planning Council, the National Technical Committee and the County Physical Planning Committee.

2.4.2 NSP linkage to other plans

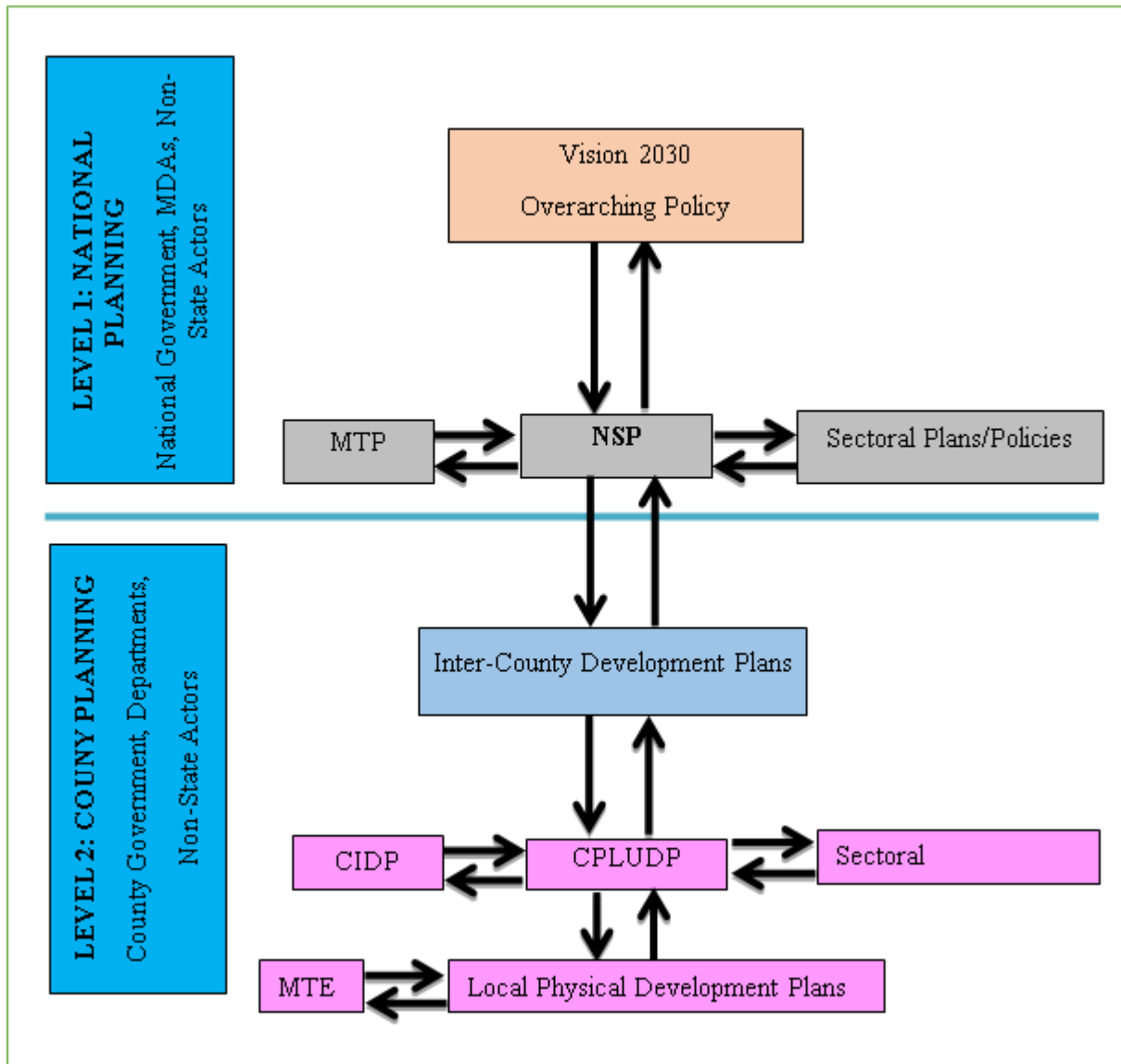
The linkage of the National Spatial Plan (NSP) to county and other lower-level plans is key to realization of its aspirations and the successful actualization of these plans. The NSP provides a spatial framework to ground the Vision 2030 flagships projects and form a basis for coordination of County policies, strategies, measures and plans.

Inter County and County plans take into considerations the policies, measures and strategies of the NSP and implements them actualizing its aspirations.

County Physical and Land Use Development Plans provide a framework where the CIDP draws its programs and projects. The implementation of the CIDP in turn leads to realization of the objectives of the County Physical and Land Use Development Plan. Figure 3 below illustrates the Country's planning linkage.

DRAFT

Figure 3: National Spatial Plan Linkage to Other Plans



Source: The National Spatial Plan, 2015 - 2045

3 COUNTY PROFILE

3.1 Overview

This chapter presents the locational, bio-physical and socio-economic perspectives and trends of the County. These perspectives informed the preparation of the strategies, policies and measures that form the National Spatial Plan County-Specific Guidelines for Kwale County.

3.2 Location Context

Kwale County is one of the six counties in the coastal region and lies within the semi-arid area of the Country. It borders Taita Taveta County to the North West, Kilifi County to the North East, Mombasa County and the Indian Ocean to the East, and the United Republic of Tanzania to the South. The County is located in the South-eastern corner of Kenya, between Latitudes 30 3' and 40 45' south and Longitudes 380 31' and 390 31' East. Map 1 illustrates the position of Kwale County within the Country.

The County covers an area of 8270.2 Km², of which 62 Km² is water mass. The area excludes the 200-miles coastal strip known as the Exclusive Economic Zones (EEZ). The position of the County puts it in a strategic location for accelerated economic growth on the Kenyan Coast.

3.3 Bio-Physical Context

This section provides information on the main physical and ecological characteristics, and other background information critical to the overall development strategy of the County.

3.3.1 Physical and Topographic Features

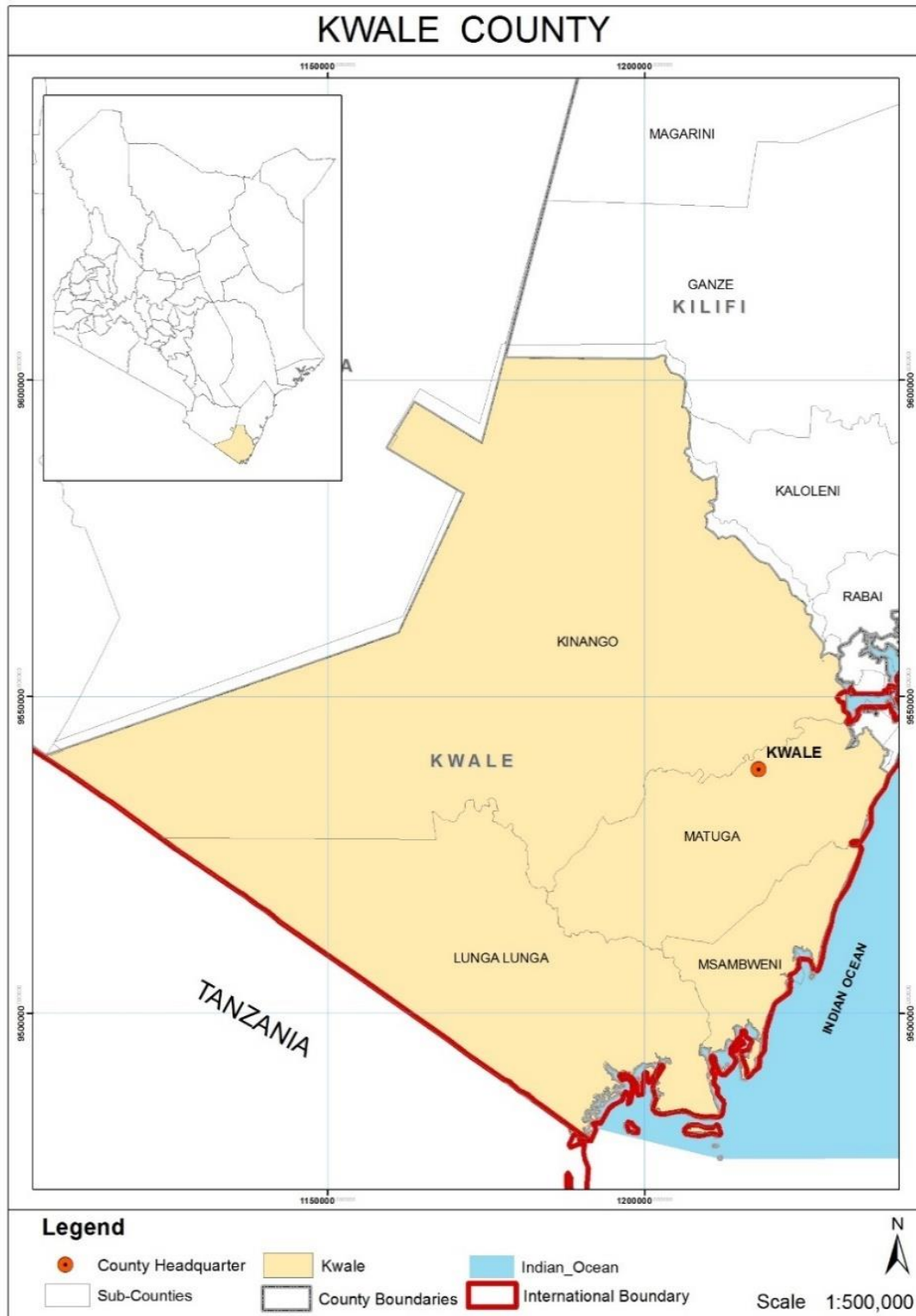
Kwale County has four major topographic features: the Coastal Plain, the Foot Plateau, the Coastal Uplands, and the Nyika Plateau. The coastline in Kwale County is approximately 110 kilometres and consists of corals, sands, and alluvial deposits. The Foot Plateau lies at an altitude of 60 and 135 meters above sea level. The Coastal Uplands rise steeply from the foot plateau at an altitude of 135 to 462 meters above sea level. The Nyika Plateau, which occupies over half of the County, rises gradually from about 180 meters on the County's western boundary. Nyika Plateau is semi-arid with generally poor soils.

The County is known for its white-sand beaches, including Diani beach, and has one of the most productive coral reefs. Coral reefs are essential for fisheries and sustaining the marine ecosystem's general ecology.

Kwale County is well-drained by seven major rivers, 3 of which are permanent, and numerous minor streams drain into the Indian Ocean. The main rivers and streams are Ramisi, Marere, Pemba, Mkurumuji, Umba, Mwachema and the Mwachi River.

DRAFT

Map 1: Kwale County Location Context



Source: State Department for Physical Planning, 2022

3.3.2 Ecological Conditions

The County is divided into agro-climatic zones in terms of agricultural potential. Medium potential and marginal lands constitute 15 to 18 percent of the total land area, suitable for drought-tolerant crops, forestry, and wildlife conservation. The remaining 67 percent is rangeland, arid and semi-arid land suitable only for livestock, and limited cultivation of drought-resistant crops. Annual precipitation is less than 800mm on average and is highly unreliable.

The County lies within five zones of the Coastal Lowlands agro-ecological zones (AEZs) in terms of agricultural potential, as shown in the table 3 below:

Table 2: Agro-Ecological Zones and their agricultural potential

Zones	% Of land area	Economic Activities
Coastal lowlands CL2 zone (lowland marginal sugarcane zone)	3	This zone is the main production area for food crops grown in the County. Most of the rain-fed rice is found here.
Coastal lowlands CL3 zone (coconut and cassava zone)	13	Tree crops, food crops, and livestock. Crops include cashew nuts, maize, and beans, while livestock includes dairy animals
Coastal lowlands CL4 zone (cashew nut and cassava zone)	12	Marginal agricultural potential with cashew nuts dominating the cash crops. Livestock is kept, and crops are produced on a small scale
Coastal lowlands CL5 zone (livestock and millet zone)	40	Livestock (cattle, poultry, and goats). Subsistence crops (maize, sorghum, cowpeas, groundnuts, cassava, and green grams)
Coastal lowlands CL6 zone (ranching zone)	32	High Livestock production potential, minimal crop production potential. The majority of farmers concentrate on keeping local cattle and goats as their primary source of livelihood

Source: Kwale County Integrated Development Plan, 2018-2022

3.3.3 Climatic Condition

The County has a monsoon climate, which is hot and dry from January to April/May, while the period from June to August is the coolest of the year. The average temperature is greater than 23°C throughout most of the County, with areas along the coast generally above 25°C annually. Rainfall is bi-modal, with short rains experienced from October to December and long rains from March/April to July. The

total annual precipitation varies from 900mm– 1500mm per annum along the coast to 500mm to 600mm per annum in the hinterland. The coastal belt receives an average annual rainfall of 1000mm with a marked decrease in intensity to the north and the hinterland.

3.3.4 Vegetation and Wildlife

The distribution of vegetation and wildlife in Kwale County is controlled by climate, geological formation, and human activity. Approximately 7 percent of the County is covered with forest, comprising 35,043 hectares of gazetted and 19,500 hectares of non-gazetted forest.

3.4 Socio-Economic Status

This section presents the population, demographic, and socio-economic outlay of Kwale County.

3.4.1 Population and Demography

The total population of Kwale County as at 2019 was 866,802 with a population projected to be 1,306,446 in 2030 and 2,285,873 in 2045. Kwale County has an approximate intercensal growth rate of 3.8 percent, higher than the 2.9 percent national growth rate. Table 4 below shows the projected population growth over the Plan period:

Table 3: Kwale County Population Projection

YEAR	2019	2020	2025	2030	2035	2040	2045
Population Size	866,802	899,741	1,084,188	1,306,446	1,574,267	1,896,991	2,285,873
Male		440,873	531,252	640,159	771,391	929,526	1,120,078
Female		458,868	552,936	666,287	802,876	967,465	1,165,795
Households	173,360	179,948	216,838	261,289	314,853	379,398	457,175
Area	8270.2 Square Kilometres						
Density	105	109	131	158	190	229	276

Source: State Department for Physical Planning, 2022

The working-age population (15-64-year-old) is projected to constitute 50% of the population which is a resource for economic growth and social progress if there are enabled to engage meaningfully in the economy. However, the County's unemployment rate is high, with 30 percent of the working population being unemployed or underemployed.

Kwale County has high levels of inequality and poverty. The County Gini coefficient is 0.6 compared with the national index of 0.45. Approximately 47 percent of individuals

within the County live below the poverty line, implying that almost half the population in the County lives in poverty. The County's Human Development Index is low at 0.44 compared to the 0.56 national score, which indicates that most of the population has a low life expectancy, limited access to knowledge, and experience poor quality of life.

3.5 Infrastructure

3.5.1 Transport Infrastructure

Kwale County has a total of 2,028 Km of classified roads, of which 212.5 Km are paved, 425.2 Km is gravelled, and 1,695.5 Km of earth surface roads. The Mombasa - Nairobi highway cuts across the northern side of the County, and an international trunk road traverses the County from Mombasa to Lunga-Lunga, on the Kenya – Tanzania border. There is 4 Km of a railway line and four airstrips at Ukunda, Shimba Hills National Reserve, Msambweni, and Kinango, although only Ukunda is operational. There are small ports at Shimoni and Vanga, used for water transport by boats controlled by Kenya Wildlife Service.

3.5.2 Posts and Telecommunications

Telephone and postal services are available at urban areas and rural centres within the County. There are three major mobile telephone providers in the County with network coverage of about 75 per cent. The County is well covered by radio, television and the print media which are powerful tools for information dissemination, entertainment and education.

3.5.3 Energy

The most common source of energy in Kwale County is wood fuel for cooking, and Paraffin for lighting. The County has an unexploited potential for solar, wind and biogas.

3.6 Economy

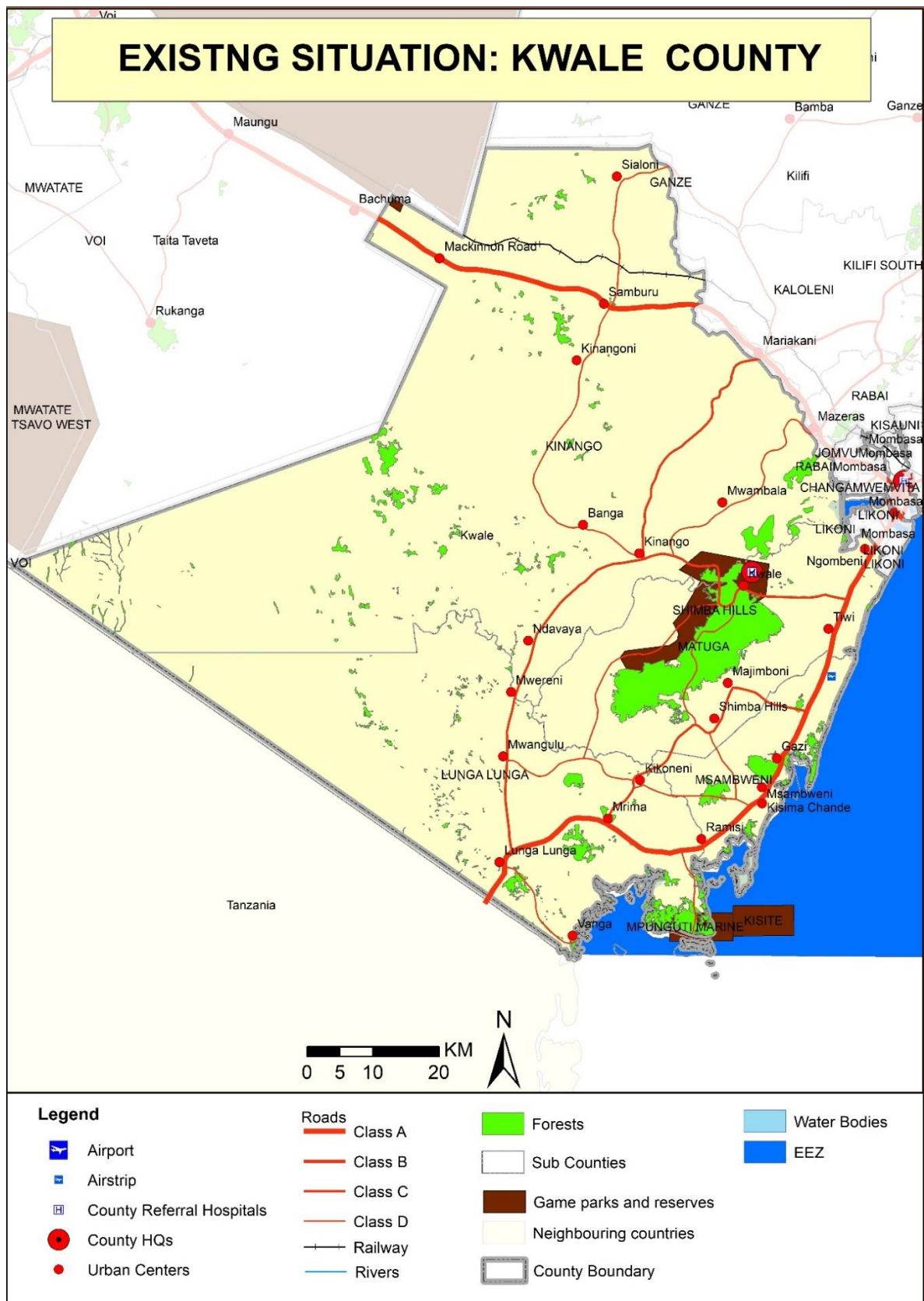
The main economic activity in Kwale County is agriculture. Subsistence farming accounts for about 80% of the average household income and is crucial in reducing poverty, creating employment and guaranteeing food and nutrition security. The essential agricultural value chain commodities produced by most farmers are maize, cowpea, poultry and goat.

Kwale County has abundant fisheries reserves along the coastline, and extensive exploitation of inland fishing through ponds. The County has beach management units, 54 fish landing sites and investment in assorted fishing accessories, including fishing boats and nets.

Map 2 below indicates the existing situation in Kwale county.



Map 2: The Existing Situation in Kwale County



Source: State Department for Physical Planning, 2022

3.7 Comparative Advantage

a) Gateway County to East Africa

The County shares its southern border with the United Republic of Tanzania. The shared border offers potential for regional integration to promote robust and equitable economic growth through cross-border trade markets, boost competitiveness, secure regional supply chains, reduce conflict and enhance trade liberalisation. Hence, there is a need to improve development of the emerging border and gateway towns.

b) Agricultural Potential

The agriculture sector is crucial in guaranteeing food and nutrition security, reducing poverty, and creating employment in Kwale County. Maize is the most significant contributor to income generated by the major field crops followed by rice and cassava. Horticulture crop production has high potential contributing approximately 2 percent of the total agricultural sector production value. Kwale County is a leading producer of horticultural products including okra, mango, citrus fruits, cowpeas, cayenne, chillies and leave amaranth. The main products from the livestock subsector in the County are beef and dairy milk. Kwale County has abundant fish reserves with the main fish types being rabbit, scavengers, jack, and king fish.

c) Mining Activities

Kwale County is well endowed with minerals and precious stones thus a considerable potential for mineral exploitation. Already discovered minerals include Titanium, Gemstones, Silica Sands, Zinc, Lead, Copper, Berryite, Coal, Sandstones, Limestone and coral rocks.

d) Green Energy

Kwale County has a high potential for renewable energy production. The County has wind speeds ranging between 3.6 to 6.4 m/s which can support utility-scale wind power generation. The County boast of an impressive solar resource with a determined solar energy potential with a specific photovoltaic power output of 4.46 kWh/kWp and direct normal irradiation of 4.59 kWh/m

4 DEVELOPMENT STRATEGIES AND POLICY GUIDELINES FOR KWALE COUNTY

4.1 County Specific Issues and Development Strategies

The National Spatial Plan provides strategies for spatial growth and development across the country. The strategies are aimed at providing a spatial expression to Kenya Vision 2030 and other sector policies.

This section seeks to provide strategies for spatial growth and development of the county by addressing the factors that prevent the county from achieving the intended goals and objectives. The development strategies discussed are aimed at enhancing the national, regional and global impacts, optimizing use of natural resources, creating a county balance and transforming rural areas.

The following are detailed NSP county-specific issues and development strategies that apply to Kwale County.

Table 4: County Specific Issues and Development Strategies

Strategy 1: Enhancing National, Regional and Global Competitiveness		
Opportunities	Constraints	Strategies
➤ Strategic location of the County at the South Western border of Kenya with the United Republic of Tanzania.	<ul style="list-style-type: none"> ✓ Poor state and lack of connectivity of the roads ✓ Inadequate transport linkages with neighboring counties and Country. ✓ Safety and security risks 	<ul style="list-style-type: none"> • Plan and provide appropriate hierarchy of roads, to increase internal external linkages within the County. • Plan and provide air and sea transport modes to increase linkage with other regions and Tanzania. • Enhance security surveillance and monitoring to improve safety and security. • Identify and leverage potential areas of corporation with Tanzania, COMESA and East African Community.

<p>➤ Trade liberalization and open global market for goods and services</p>	<p>✓ High cost of production occasioned by high cost of energy, inefficient transport system, and outdated technology.</p> <p>✓ Low quality of products and services.</p>	<ul style="list-style-type: none"> • Harness the renewable and green energy sources to increase the energy capacity and reduce the cost • Formulate policies to guide and regulate the harnessing of the renewable and green energy sources. • Formulate policies to promote and support value-chain development. • Plan and provide an integrated, efficient, reliable, sustainable road transport infrastructure. • Plan and provide an efficient and integrated railway network. • Plan and provide efficient airport facilities to facilitate quick movement of people and delivery of produce and perishable products.
<p>➤ Member of Jumuiya ya Kaunti za Pwani (JKP) Economic Bloc for economic development within the region and to foster peaceful co-existence</p>	<p>✓ Inadequate funds to manage the Bloc</p> <p>✓ Lack of consensus on the focus of potential programs and initiatives</p>	<ul style="list-style-type: none"> • Leverage the potential areas of collaboration with bloc members.
<p>➤ Marginal to medium agro-climatic zone (iv-v) that supports livestock production and drought resistant food and cash crop agricultural production</p>	<p>✓ Lack of appropriate agricultural support infrastructures</p> <p>✓ Use of inappropriate farm inputs and technology</p> <p>✓ Lack of a spatial framework to manage land uses</p> <p>✓ Harsh climatic condition and poor infertile soils</p>	<ul style="list-style-type: none"> • Provide adequate and appropriate infrastructure to support agricultural and livestock production. • Adopt modern methods and practices as well as technology in the whole range of agricultural capabilities in that County. • Preparation and review of the County Spatial Plan.

Strategy 2: Optimizing Land and Natural Resources		
Agriculture		
Opportunities	Constraints	Strategies
<ul style="list-style-type: none"> ➤ Agro-climatic zone (iv-v) with high potential for livestock and drought resistant agricultural production ➤ High potential for Irrigation through surface and underground water exploitation 	<ul style="list-style-type: none"> ✓ Increased drought risk due to climate change ✓ Fragmentation of land into uneconomical parcels due to population pressure ✓ Inadequate agricultural support infrastructure ✓ Use of inappropriate farm inputs and technology ✓ Inadequate spatial frameworks to manage land uses ✓ Inadequate capacity, skills and resources to fund, develop and operate irrigation, livestock production and agro-based industry projects and programs 	<ul style="list-style-type: none"> • Formulate appropriate policy framework to stop further fragmentation of agricultural land and explore land consolidation strategy • Intensification of land use • Provide adequate and appropriate infrastructure • Adopt modern methods and practices as well as technology in the whole range of agricultural capabilities in the County • Formulation of policies to tap the capability and potentials of the County • Restrict the conversion of this land to any other use. • Collaborate with other partners to enhance the irrigation potential
Blue Economy		
Opportunity	Constraint	Strategy

<ul style="list-style-type: none"> ➤ Aquaculture and marine-culture potential areas ➤ Ocean and deep-sea fishing potential area ➤ Terrestrial green carbon sinks 	<ul style="list-style-type: none"> ✓ Climate vulnerability ✓ Maritime insecurity ✓ Inadequate access to shared resources ✓ International and national regulations ✓ Water pollution ✓ Lack of requisite equipment and technology to tap fishing potential. ✓ Lack of knowledge, appropriate skills, training and financial resources 	<ul style="list-style-type: none"> • Develop, promoted and integrate the blue economy into the economy of the County • Develop the requisite infrastructure to support exploitation of the blue economy • Establish programs and initiatives to develop human capacity for development of the Blue Economy • Formulate and implement laws, regulations and agreements that govern a sustainable Blue Economy • Formulate policies and laws to protect inland fishing resources and enhance sustainable exploitation of sea fishing • Prepare policies and enact laws to mainstream climate change mitigation and adaptation into county planning processes, policies and programs. • Prepare a marine resource management and development plan to guide the exploitation of the marine resources • Integrate waste management and water pollution control in all county policies
Environment (Conservation Area & Protection Area)		
Opportunity	Constraint	Strategy
<ul style="list-style-type: none"> ➤ High percentage of range land ➤ Diverse biodiversity 	<ul style="list-style-type: none"> ✓ Soil erosion ✓ loss of vegetation ✓ High flood risk across a vast area of the County 	<ul style="list-style-type: none"> • Increase forest cover through afforestation, re-afforestation and agro forestry • Formulate and prepare land and disaster risk management policies and plans

		<ul style="list-style-type: none"> • Plan and provide appropriate storm water management infrastructure to optimize rain water harvesting
<ul style="list-style-type: none"> ➤ Abundant surface and underground water resources 	<ul style="list-style-type: none"> ✓ Deforestation ✓ Encroachment by human settlement and activities ✓ Declining water quality from water Pollution and extensive cultivation ✓ Increased drought risk due to climate change 	<ul style="list-style-type: none"> • Formulate policy frameworks to protect water catchment areas. • Formulate policy frameworks to contain human settlement and hinder land use change within these areas. • Delegation and gazettelement of delineated natural forests, wetlands and critical water resources. • Rehabilitation of wetlands, water sources and natural forests in the County
Natural Resource		
Opportunity	Constraint	Strategy
<ul style="list-style-type: none"> ➤ High potential for green energy power production ➤ Underground water reservoirs ➤ Abundant mineral resources ➤ Sandy Beaches, The Ocean, Minerals and Good Soils/Blue Economy 	<ul style="list-style-type: none"> ✓ Under exploitation of solar and wind energy ✓ Inadequate rain water harvesting technology ✓ Low technology adoption and high cost of exploration and exploitation. ✓ Lack of a regulatory framework in exploitation of underground water ✓ Inadequate transport and support infrastructure 	<ul style="list-style-type: none"> • Adopt sustainable exploitation of the available natural resource potential • Optimal utilization of developed green energy resources • Invest in appropriate technology and infrastructure • Collaborate with other partners to enhance the green energy potential • Plan and provide appropriate storm water management infrastructure to optimize rain water harvesting

		<ul style="list-style-type: none"> • Formulate policies to guide regulation of underground water exploitation • Harnessing of tourism potential through beach tourism, deep sea fishing, hotels and boat racing • Invest in exploration of potential mineral reserves
Industrial		
Opportunity	Constraint	Strategy
<ul style="list-style-type: none"> ➤ High potential for agro- based industries ➤ High potential for the Rural based industries ➤ High potential for mineral-based industries ➤ Support of diversification of the economy 	<ul style="list-style-type: none"> ✓ poor linkage to the markets due inadequate internal and external connectivity and transport infrastructure ✓ Low technological adaptation for value addition ✓ High cost of production ✓ Price fluctuation 	<ul style="list-style-type: none"> • Plan and provide appropriate transport infrastructure to increase internal and external linkages within the County • Provide appropriate technology to enhance value addition. • Diversify energy production sources to reduce costs of production and enhance its reliability • Promote the formation of cooperatives and Saccos to advance marketing and control of market prices • Prepare an industrial master plan • Locate mineral-based industries in situ where the minerals are found
Tourism		
Opportunity	Constraint	Strategy
<ul style="list-style-type: none"> ➤ Protected areas home to a diverse variety of animal species (elephants, baboons, monkeys, buffalos, giraffes and sable antelope and abundant 	<ul style="list-style-type: none"> ✓ Minimal exploitation of tourism potential due to poor quality and inadequate infrastructure ✓ Encroachment of human activities into the protected area 	<ul style="list-style-type: none"> • Plan and provide appropriate tourism support infrastructure • Establish county legal framework for Surveillance, Protection and conservation of natural ecosystems and protected areas

<p>birdlife) thus a high potential to be a leading tourist destination.</p> <ul style="list-style-type: none"> ➤ High potential for wildlife conservation ➤ Existing nature-based tourism, cultural tourism, and sport tourism attractions 	<ul style="list-style-type: none"> ✓ Less assertive marketing strategies ✓ Over reliance on foreign tourism and few marketing ventures targeting nontraditional tourists ✓ Poaching ✓ Human- wildlife conflicts 	<ul style="list-style-type: none"> • Establish county regulation framework for enforcement of the existing regulations for safeguarding protection and conservation areas • Strict enforcement of the existing regulations for safeguarding protection areas • Delegation and gazettement of delineated natural forests, wetlands and water towers • Identify and delegate potential protection and conservation areas for gazettement • Promote domestic tourism by providing incentives and subsidies • Formulation of laws that highly prosecute poachers • Prepare wildlife management plans to manage wildlife habitats and population.
Transport		
Opportunity	Constraint	Strategy
<ul style="list-style-type: none"> ➤ Existing critical infrastructure with approximately 60 kilometers of the Northern Transport Corridor passing through the County, the Standard Gauge Railway, an international trunk road from Mombasa to Tanzania through Lunga-Lunga, and proximity to the port of Mombasa 	<ul style="list-style-type: none"> ✓ Poor state and lack of connectivity of the roads ✓ Inadequate linkages with neighboring counties and Tanzania ✓ Inadequate public transport system, Lack of NMT Infrastructure and inefficient modal split ✓ Encroachment on road reserves ✓ Poor condition of the existing county roads 	<ul style="list-style-type: none"> • Plan and provide appropriate hierarchy of roads, to increase internal external linkages within the County • Plan and provide air and sea transport modes to increase linkage with other regions and Tanzania • Prepare sustainable mobility plans • Enforce a regulatory standard requirement for all public transport service operators • Delineate and enforce road reserve extents • Improve the condition of all County roads to motorable standards

Public Utilities		
Water		
Opportunity	Constraint	Strategy
<ul style="list-style-type: none"> ➤ Abundant surface and ground water resources 	<ul style="list-style-type: none"> ✓ Increased drought risk due to climate change Deforestation ✓ Encroachment by human settlement and activities ✓ Declining water quality from water Pollution and extensive cultivation ✓ Population increase resulting to high demand surpassing its supply 	<ul style="list-style-type: none"> • Adopt sustainable exploitation of the available water resource potential • Plan and provide appropriate storm water management infrastructure to optimize rain water harvesting and ground water replenishment • Formulate policies to guide regulation of underground water exploitation • Formulate policy frameworks to protect water catchment areas. • Formulate policy frameworks to contain human settlement and hinder land use change within these areas. • Rehabilitation of wetlands, water sources and natural forests in the County
Solid Waste Management		
<ul style="list-style-type: none"> ➤ Urbanization ➤ Enabling legislation, policies and regulatory frameworks to guide solid waste management 	<ul style="list-style-type: none"> ✓ Increased solid waste generation due to increased population pressure ✓ Inadequate solid wastes management facilities 	<ul style="list-style-type: none"> • Service all urban settlements by a centralized sewerage treatment system and solid waste disposal facilities. • Provided informal settlements with essential infrastructure services to improve the quality of life of low-income urban residents • Apply appropriate technology solutions to sewerage treatment in rural and low-density housing areas

		<ul style="list-style-type: none"> • Provide provisions for development of sewer systems and treatment works and solid waste disposal sites within all Physical and Land Use Plans • Guide expansion of urban boundaries based on investment in infrastructural services. • Prepare and enact laws to incorporate private public partnerships in infrastructure investments • Adopt appropriate technology to facilitate reduction, recycle and reuse of waste (3R's) • Plan and provide appropriate storm water management infrastructure • Construct waste water treatment plants and solid waste management projects in well-established permanent settlements in the arid regions of the County.
ICT		
➤ Existing National Fiber Optic network (NOFBI)	<ul style="list-style-type: none"> ✓ Poor access to ICT infrastructure ✓ High cost of ICT equipment 	<ul style="list-style-type: none"> • Increase ICT relevant infrastructure • Mainstream ICT in all sectors to promote service delivery • Improve ICT adoption • improve on existing platforms such as Huduma center, BPO services and E-government
Energy		
➤ Abundant potential for wind and solar energy production	✓ Inadequate exploitation of the renewable energy potential in the County	• Formulate policies to mainstream green energy generation in the County

		<ul style="list-style-type: none"> • Identify potential sites and construct solar and wind energy generation plants • Prepare policies that promote green energy for expansion, modernization and upgrading of electricity generation and supply
Strategy 3: Balanced Regional Development		
Opportunities	Constraints	Strategies
<ul style="list-style-type: none"> ➤ Resource endowment including vast range lands, forests, favorable climatic conditions ➤ Enabling policy and legal frameworks 	<ul style="list-style-type: none"> ✓ Weak linkages between rural and urban areas. ✓ Inadequate infrastructural facilities and services ✓ Under-exploitation of resources ✓ Uneven distribution of social infrastructure 	<ul style="list-style-type: none"> • Provide transport connectivity and adequate inter and intra-county road networks • Establish strong rural urban linkages • Promote industrialization and value addition in less developed regions • Promote investment in sustainable tourism • Promote irrigation activities for improved productivity • Provide and promote equitable distribution of physical and social infrastructure
Strategy 4: Promoting Rural Development		
<ul style="list-style-type: none"> ➤ Resource endowment in rural areas (agriculture, large-scale livestock production and tourism) ➤ Human resource (both skilled and unskilled) ➤ Existing physical and social infrastructure (roads, schools, 	<ul style="list-style-type: none"> ✓ Inefficient and dilapidated infrastructure facilities and services ✓ Weak rural-urban linkages ✓ Underutilization of the resources in the rural areas ✓ inappropriate transport infrastructure and utilities ✓ The dispersed nature of the human settlements, 	<ul style="list-style-type: none"> • Promote rural industrialization and value addition in less developed regions • Plan and provide strong rural urban linkages • Formulate policies and prepare plans to guide sustainable utilization of available resources in the rural areas • Plan and develop appropriate transport and infrastructural facilities and services to support the exploitation of resources

<p>health centres, administrative units</p> <ul style="list-style-type: none"> ➤ Enabling policy and legal frameworks ➤ Devolution 	<ul style="list-style-type: none"> ✓ Fragmentation of land into uneconomical parcels due to population pressure 	<ul style="list-style-type: none"> • Formulate appropriate policy framework to stop further fragmentation of agricultural land and explore land consolidation strategy • Modernize agriculture to promote high yield production
<p>Strategy 5: Urbanization</p>		
<ul style="list-style-type: none"> ➤ Human resource (both skilled and unskilled) ➤ Enabling policy framework ➤ Existing infrastructure ➤ Devolution of governance ➤ Establishment of equalization of funds 	<ul style="list-style-type: none"> ✓ Weak rural-urban linkages ✓ Rapid urbanization rates ✓ Weak and uncoordinated development control and enforcement systems. ✓ Poor enforcement of existing legislation on housing development and land use ✓ Poor implementation of development plans and planning policies ✓ Lack of appropriate transport infrastructure and utilities ✓ Deteriorating infrastructure ✓ Poor waste management ✓ Land and governance issues. ✓ Proliferation of informal settlements ✓ Land and governance issues 	<ul style="list-style-type: none"> • Strengthen the urban rural linkages to reduce the rate of urbanization • Provide services and infrastructure closer to the rural areas • Enforce, harmonize and regularly review the existing legislative and regulatory instruments • Plan and provide appropriate and adequate transport infrastructure and utilities • Promote the development of centers as per its potential and population • Promote sustainable waste management • Strengthen existing land management institutions • Plan, implement and enforce urban plans for the existing centers to control urban sprawl and promote urban containment.

	✓ Urban sprawl	
--	----------------	--

DRAFT

4.2 National Spatial Plan Policy Guidelines for Kwale County

The National Spatial Plan has stipulated policies to provide a foundation upon which to anchor the strategies enumerated therein. The primary aim is to inculcate discipline in the use of land and natural resources of the country thus stemming duplication and wastage of the resources.

This section seeks to provide the spatial policy guidelines and measures aimed at promoting the achievements of the objectives of the National Spatial Plan using its guidelines. These policies are supported by a wide range of measures which spell out the specific actions to be undertaken to actualize the policy intentions. The policies shall be implemented by the county government's agencies responsible for planning and development control as well as the authorities responsible for land administration.

The following are the policies and measures specific to Kwale County.

Table 5: NSP Policy Guidelines and Measures for Kwale County

	Sector/Area	Policy	Measures
1	<p>Resource Potential Growth Regions: Costal Belt, the Indian Ocean and Inland rangelands</p> <p>Key Urban Areas: Kwale, Ukunda, Diani, Lungalunga, Msambweni and Likoni</p> <p>Rain fed medium agricultural potential and the rangelands areas (Nyika plateau – 67% of total county area)</p>	<ul style="list-style-type: none"> ✓ Enhance irrigation agriculture and livestock production and value addition ✓ Adopt sustainable exploitation of the available natural resource potential ✓ Improve and intensify agricultural Extension, Training, Research and Information Services ✓ Concentrated development around vital urban areas ✓ Land Use intensification ✓ Investment in social and physical infrastructure 	<ul style="list-style-type: none"> • Infrastructure provision to support value addition initiatives and human settlement • Rural development through provision of infrastructure, agricultural sector development, value addition and value chain development • Facilitate the transformation from traditional to modern agricultural practices • Develop small and medium centres • Conservation, management and sustainable use of water resources • Development and rehabilitation of critical infrastructure in the County

		<ul style="list-style-type: none"> ✓ Development of tourism infrastructure ✓ Environmental protection and conservation 	<ul style="list-style-type: none"> • Protection and conservation of environment, wildlife and forest resources
2	County Spatial Structure	<ul style="list-style-type: none"> ✓ Utilise the NSP as the guiding framework to achieve integrated and sustainable spatial development ✓ National Spatial Plan as a basis for preparation of lower tier development plans 	<ul style="list-style-type: none"> • Preparation of County and Local Physical and Land use plans • Align Spatial/Physical Plans to conform to the objectives and policies of the NSP • 5-year review of medium term Physical and Land Use Plans shall take into account provisions of NSP • Sectoral policies to take cognizance of objectives and policies of NSP • Provide planning authorities with adequate human, financial and technical resources
3	Enhancing National Competitiveness	Selective concentration concept shall be adopted for planning and location of urban-based economic activities to leverage on national competitiveness.	<ul style="list-style-type: none"> • Preparation of Spatial Development Plans to guide development in the selected urban and rural growth areas
		Provide major urban areas with appropriate infrastructure to enhance efficiency and quality of life	<ul style="list-style-type: none"> • Enhance the Liveability Index for urban areas by providing quality and affordable social and physical infrastructure • Provide appropriate trunk infrastructure in the form of reliable energy, water, sanitation and ICT • Improve the road infrastructure by providing for modal split, linkages and interchanges

		<p>✓ Optimise and sustainably utilise land and natural resources</p>	<ul style="list-style-type: none"> • Encourage the transformation from traditional farming and livestock keeping methods to modern practices • Widen the County economic base through strengthening of agricultural downstream processing of agricultural products • Identify and develop the tourism potential within the County • Explore and exploit the mineral, energy and water potentials • Provide transportation networks and other infrastructure necessary to support exploitation of land and other natural resources • Provide technical training and social development programmes to enhance integration of the community into the modern economy • Support development of urban areas in the less developed areas to catalyze development
		<p>✓ Enhance efficiency of the transportation network to take advantage of the strategic location and position of the County</p>	<ul style="list-style-type: none"> • Prepare spatial development plans for the main transportation corridors to guide their development for sustainable economic growth and transportation • Renew and modernize the existing northern corridor and Mombasa to Lunga-Lunga international trunk road to spur economic development • Upgrade and modernize the existing railway facilities

			<ul style="list-style-type: none"> • Provide for robust transportation for efficient, modern and low -cost connectivity by Sea, Air, Rail, Road and Fibre Optic • Establish efficient transport linkages to the port of Mombasa
		<ul style="list-style-type: none"> ✓ Enhance cooperation in spatial and economic planning with member states of the East African Community (EAC) and the Common Markets of East and Southern Africa (COMESA) 	<ul style="list-style-type: none"> • Undertake joint planning of trans-boundary resources, transport corridors and infrastructure, and border urban areas
		<ul style="list-style-type: none"> ✓ Promote development of the Blue Economy and its integration into the County economy 	<ul style="list-style-type: none"> • Develop human capacity in partnership with the academia to conduct research, explore and Blue Economy resources • Formulation and implementation of an integrated coastal land use plan • Plan, manage and effectively govern the use of marine space and resources • Develop and apply standards, guidelines and best practices that support a sustainable blue economy.
4	Modernizing Agriculture	<ul style="list-style-type: none"> ✓ Rangelands shall be developed and optimally utilised for large scale commercial production of livestock to support downstream processing of livestock products and promote balanced regional development 	<ul style="list-style-type: none"> • County spatial plan prepared shall guide and promote large-scale livestock production and irrigated agriculture based on the County potential • Prioritize provision of requisite infrastructure to support large scale livestock production

			<ul style="list-style-type: none"> • Modernize livestock keeping through appropriate animal husbandry, product processing and timely marketing • Promote transport connectivity and adequate inter and intra-road networks as well as other social and physical infrastructure • Adopt appropriate rangelands management practices • Increase livelihood diversification, productivity and competitiveness and create an investment environment based on local dynamics and internal potential • Establish infant industries in rural and rangeland areas for value addition and investments opportunities • Enhance ASAL climate change adaptation and mitigate desertification
		<ul style="list-style-type: none"> ✓ The use of land in the arable rangelands shall be intensified to increase productivity 	<ul style="list-style-type: none"> • Adopt modern agricultural production methods and practices • Upscale the adoption of technology in agricultural production • Encourage mixed farming • Promote agri-business • Provide appropriate infrastructure to support the exploitation of potential areas for drought resistant food and cash crops
		<ul style="list-style-type: none"> ✓ Optimize potential by promoting investment in irrigation agriculture for high value crops 	<ul style="list-style-type: none"> • Research to identify high potential irrigation areas in the County

			<ul style="list-style-type: none"> • Rehabilitate, expand and operationalize existing irrigation schemes • Establish new irrigation schemes in the identified potential areas • Encourage small holders' irrigation schemes through sensitization campaigns and reduction of capital costs for investments
		<p>✓ The fishing potential of the County shall be optimized to increase the food stock and export earnings</p>	<ul style="list-style-type: none"> • Support the sustainable exploitation of sea fishing resource • Protect the inland fishing resources • Undertake research to identify the areas with potential for fish farming • Encourage small holder farmers to establish fish farms in areas with potential • Provide appropriate infrastructure to support the fishing industry • Increase access to fishing equipment by making them affordable
5	Diversify Tourism	<p>✓ Promote diversification of tourism by offering diverse products</p>	<ul style="list-style-type: none"> • Developed tourism to offer; • beach and adventure tourism ecotourism, sport and cultural tourism, MICE, agro tourism, ecological, safari and wildlife tourism, and archaeological and historical tourism

		<p>✓ Governance of tourism shall be enhanced</p>	<ul style="list-style-type: none"> • Prepare integrated Physical and Land Use Plans to guide development of the tourism sector • Prepare and implement County Policies on land use, wildlife and tourism • Enhance security, surveillance and counterterrorism measures to bolster confidence in the tourism sector
		<p>✓ Appropriate tourism support infrastructure and facilities to be provided</p>	<ul style="list-style-type: none"> • Carry out an inventory of tourism infrastructure and facilities in the County • Formulate planning regulations and standards to guide tourist specific infrastructure and facilities • Develop the requisite tourism support infrastructure and facilities • Upgrade the existing tourism facilities and infrastructure • Adopt low carbon and green tourism infrastructure options • Provide and upgrade the ICT infrastructure to support tourism
		<p>✓ Tourist attraction areas and sites shall be conserved and protected</p>	<ul style="list-style-type: none"> • Identify, map and protect all wildlife migratory corridor • Prepare action area plans for the wildlife migratory and dispersal corridors and wildlife habitat

			<ul style="list-style-type: none"> • Prohibit the location of incompatible land use activities • Strictly regulate developments within the tourist attraction sites • Protect wildlife watering points 	
		<ul style="list-style-type: none"> ✓ Spatial Development plans shall be prepared to guide development and implementation in the tourism sector 	<ul style="list-style-type: none"> • Prepare Diani Resort City Local Physical Development Plans • Prepare Coastal Beach Ecosystem Management plans • Prepare Ecosystem area plans for all parks and reserves 	
6	Managing Settlements	Human	<ul style="list-style-type: none"> ✓ Anticipate and accommodate the expected increase in population in urban areas 	<ul style="list-style-type: none"> • Develop Kwale, Ukunda, Msambweni and Lunga-Lunga as principal towns in accordance to their potential • Provide efficient transportation and quality infrastructure within urban and rural settlements • Upgrade the existing and provide additional infrastructure and facilities to support housing, industrial and the service sectors • Promote adoption of technology and fiscal incentives and market support for the informal sector • Prepare Local Physical and Land Use Plans for urban areas to delineate urban limits
			<ul style="list-style-type: none"> ✓ Develop and support alternative urban to promote balanced regional development and spur growth 	<ul style="list-style-type: none"> • Develop market centres as intermediate centres between the rural and the principal towns

			<ul style="list-style-type: none"> • Provide principal towns and urban centres with the requisite physical and social infrastructure
		<ul style="list-style-type: none"> ✓ Improve management and governance of human settlements 	<ul style="list-style-type: none"> • Build capacities of the urban areas management boards • Integrate technology in management of human settlements to strengthen urban data systems • Coordinate and strengthen development control mechanisms • Provide adequate human resource and improve their capacity in management of human settlements in the sectors of; housing, settlement, land, infrastructure, construction, energy and disaster management • Enter public private partnerships in the provision of housing.
		<ul style="list-style-type: none"> ✓ Peri-urban development shall be managed and controlled to contain urban growth within its limits and protect rural land uses 	<ul style="list-style-type: none"> • Formulate policy for urban containment and densification • Formulate and implement planning legislation on peri-urban planning and management • Create green belt buffer zones to define the urban and peri-urban areas • Incentivize local farmers to preserve agricultural land by promoting local production and providing ready markets for agricultural produce
		<ul style="list-style-type: none"> ✓ Develop human settlements in line with environmental and natural resources conservation to improve living conditions 	<ul style="list-style-type: none"> • Map out and prohibit human settlement in environmental sensitive areas • Plan and provide an integrated waste management system

			<ul style="list-style-type: none"> • Prepare and implement zoning guidelines to ensure compatibility of land uses • Promote social organization and environmental awareness • Strengthen the capacity of the local governing bodies to deal with environmental challenges effectively • Empower the community to assume responsibility and authority for managing and enhancing their environment • Provide adequate and functional open spaces in urban places • Prescribe planning standards for open/green space on private development • Aim for zero carbon building standards and ensure all buildings meet energy efficiency criteria
		<ul style="list-style-type: none"> ✓ Rural growth centres shall be rationalized and supported to act as central places and settlements clustered to free the agro potential areas and rangelands 	<ul style="list-style-type: none"> • Provide basic services such as extension services, health facilities, markets, sanitation, water, power and education to improve the quality of rural life • Undertake sensitization and awareness campaigns on the need to conserve agricultural land by discouraging land fragmentation • Link growth centres using secondary roads as a minimum • Promote sectors such as livestock production and tourism that have potential to stimulate rural development

		<ul style="list-style-type: none"> ✓ Provision of an efficient, reliable and effective transport system for human settlements 	<ul style="list-style-type: none"> • Plan and develop an integrated urban transport system to enhance provision of relevant modal split • Integrate land use and transportation planning to encourage development patterns which reduce transport demands • Establish an effective transport management system • Improve the road conditions and expand the linkages to human settlements • Integrate NMT with existing transport infrastructure • Incorporate the concept of green energy in transport systems planning and redevelopment
7	Conserving the Natural Environment	<ul style="list-style-type: none"> ✓ All environmentally sensitive areas shall be protected and utilized in a sustainable manner 	<ul style="list-style-type: none"> • Prepare integrated marine resource management plans • Prepare integrated ASAL resources management plan • Undertake and support research and training in the conservation and management marine ecosystems and resources • Promote regional and international cooperation in the conservation and management of marine migratory species • Implement the Integrated Coastal Zone Management Policy and Integrated Ocean Management Policy, Strategy and Action Plan

			<ul style="list-style-type: none"> • Prepare integrated forest resource management plans • Develop and implement a county strategy for rehabilitation and restoration of degraded forests • Involve and empower communities in the management of environmental resources • Promote afforestation and agro-forestry through County Physical and Land Use Plans • Delineate mangrove forest areas and formulate regulations for sustainable utilization • Gazette, protect and rehabilitate degraded forests • Indigenous forests shall be identified and protected from logging
		<p>✓ Community participation shall be mainstreamed in the protection and conservation of natural resources</p>	<ul style="list-style-type: none"> • Sensitize communities living around the natural resources on the need for conservation of the resources • Develop mechanisms for sharing benefits accruing from the natural resources by the conservation agencies in consultation with the local communities • Identify and map all disaster-prone areas for sustainable management.
8	Integrated Transportation Network	<p>✓ Transport and land use planning shall be integrated</p>	<ul style="list-style-type: none"> • Establish a hierarchy of transportation systems comprising rail, road, water (lake and sea) and air

			<ul style="list-style-type: none"> • Repossess all illegally acquired land for transport Infrastructure • Incorporate the needs of persons with disability in all the planning, development and management of the transport network • Plan urban based activities to support mass transit systems and reduce the need for travel in urban areas • Carry out traffic impact assessments for all land use changes as part of development control and as a tool of land use planning • Enhance the planting of trees, greenery as buffer zones to roads and the airstrip
		<p>✓ An integrated and functional transport system for the urban areas shall be developed</p>	<ul style="list-style-type: none"> • Expand Ukunda airstrip • Develop the coastal sea ports of Shimoni and Vanga • Expand and develop the railway network as a core mode of transportation • Provide access and linkage, between County and sub-county's headquarters and for local access and link them to national transportation corridors • Expand all roads connecting county headquarters to sub-county headquarters to at least 30m and developed to bitumen standard • Develop roads connecting infrastructure installations of County and national importance and resource areas to bitumen standard

		<ul style="list-style-type: none"> ✓ Environmental conservation shall be upheld in the planning, development and management of the transportation network 	<ul style="list-style-type: none"> • Construction and management of the transport network to abide by environmental regulations and standards • Promote the use of green energy in all transportation systems • Enforce emission testing in all transport modes
9	Providing Appropriate Infrastructure	<ul style="list-style-type: none"> ✓ Safe, adequate, reliable and affordable electricity for both urban and rural settlements shall be provided 	<ul style="list-style-type: none"> • Tap into solar for large scale production for sale to the national grid • Provide safe connections for all informal settlements in urban areas for safety. • Mainstream and enforce green energy options in the design of buildings • Explore alternative options of power generation • Build capacities in the energy sector • Increase access to electricity through upgrading and expansion of the national power transmission and distribution network
		<ul style="list-style-type: none"> ✓ Expansion and improvement of water reticulation systems to facilitate the access to clean, safe, adequate, reliable and affordable water in human settlements shall be promoted 	<ul style="list-style-type: none"> • Construct and rehabilitate water supply systems and rural water schemes • Incorporate water provision in all physical/spatial development plans • Partner with neighbouring counties in the rehabilitation and protection of water sources • Expand water supply in the proposed resort city of Diani • Improve connectivity and water supplies in the main centres

			<ul style="list-style-type: none"> • Develop water supply systems and sewers, and a comprehensive mapping of all water supplies systems in the informal settlements
		<ul style="list-style-type: none"> ✓ A network of functional, efficient, safe, accessible and sustainable county health referral infrastructure shall be established 	<ul style="list-style-type: none"> • Increase the utilization of services at lower levels of the health services • Improve preparedness and response to emergencies • Provision of quality emergency health services at the point of need • Strengthen outreach systems for provision of health services to marginalized and vulnerable population • Establish fully fledged low – cost diagnostic centre and provide adequate screening and treatment facilities for persons with chronic or terminal conditions • Modernization of infrastructure and hospital equipment at the referral hospital(s)
		<ul style="list-style-type: none"> ✓ Appropriate, quality, efficient and cost-effective ICT infrastructure in both rural and urban areas shall be promoted 	<ul style="list-style-type: none"> • Integrate e-youth ICT platforms • Mainstream use of ICT in all levels of county government and the private sector (e-government) • Develop, extend and upgrade ICT Infrastructure •
		<ul style="list-style-type: none"> ✓ The expansion of sewerage systems and waste management facilities shall be promoted to improve sanitation in human settlements 	<ul style="list-style-type: none"> • Service all urban settlements by a centralized sewerage treatment system and solid waste disposal facilities

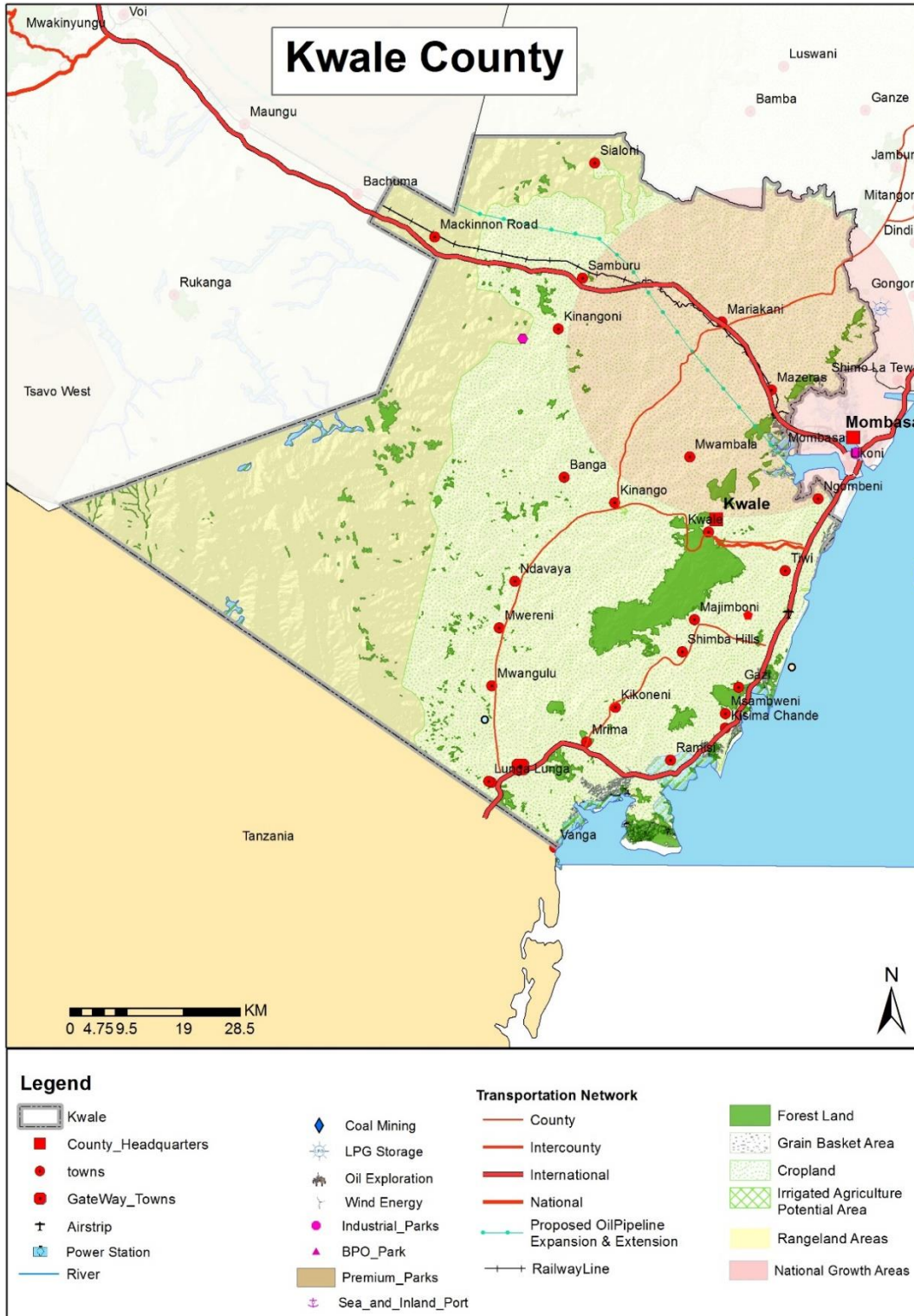
			<ul style="list-style-type: none"> • Expand the sewerage coverage and capacity for the major urban centres of Ukunda, Lungalunga, Msambweni, Likoni and Kwale • Apply appropriate technology solutions to sewerage treatment • All Physical and Land Use Plans to make provision for development of sewer and waste management infrastructure • Adopt appropriate technology to facilitate reduction, recycle and reuse of waste (3R's) • Undertake rehabilitation of storm water drainage systems • Construct waste water treatment plants and solid waste management projects in well-established rural settlements and growth areas • Enact county laws to incorporate private public partnerships in infrastructure investments
		<ul style="list-style-type: none"> ✓ Sporting infrastructure shall be planned, developed, maintained and the existing rehabilitated to promote sports development 	<ul style="list-style-type: none"> • Establish a County Sports Talent Center to scout, tap, nurture and develop sports talents • Undertake to rehabilitate all stadia to national and international standards
10	Towards a Rapidly Industrializing County	<ul style="list-style-type: none"> ✓ The cluster development strategy shall be promoted to focus on proximity to raw materials and markets of region-specific products 	<p>Mineral-based industries to be located in-situ where the minerals are found</p> <ul style="list-style-type: none"> • Establish livestock produce, horticulture and agrobased industries in the relevant potential zones within the County • Promote value addition in processing of local produce

		<p>✓ Specific sites for industrial development shall be identified, planned and serviced</p>	<ul style="list-style-type: none"> • Plan and set aside land for industrial development in every sub-county • Integrate the industrialization process and environment conservation • Provide an integrated, efficient, reliable and sustainable transport infrastructure • Increase availability of clean water and improve sanitation • Discharge of safe/ clean industrial waste into water bodies shall be encouraged
		<p>✓ Adequate and affordable energy supply for the industrial sector shall be provided</p>	<ul style="list-style-type: none"> • Adopt renewable energy generation programs • Provide reliable energy infrastructure by extending the national grid network • Incentivize large industries to promote co-generation of power • Promote the adoption of energy efficient technologies to lower the demand for energy

DRAFT

Map 3 below provides a spatial representation of the policies proposed Kwale County.

Map 3: NSP Proposal for Kwale County



Source: State Department for Physical Planning, 2022

5 IMPLEMENTATION AND ADOPTION OF THE GUIDELINES

5.1 Overview

The implementation framework identifies activities and further ties them with responsible actors, resources and timeframes adequate for their execution. It constitutes a deliberately established method, means or system of ensuring that the policies, strategies and measures outlined in the guidelines are continuously and consistently executed to achieve their objectives.

To effectively implement the guidelines, the various sectors, actors and levels of planning have been identified and have to work together and the mandate of the sectors at the National and County levels of planning have to be integrated.

5.2 Implementation Channels

The County Specific Guidelines will be implemented through various approaches including:

1. Preparation of spatial plans to integrate and conform to the proposals of the County Guidelines. The plans include:
 - Inter-County Physical and Land Use Development Plans for Metropolitan regions, conservation zones, river basins, water towers, coastal ecosystems, trans-boundary resource areas and transport corridors, among others.
 - County Physical and Land Use Development Plans.
 - Local Physical and Land Use Development plans for Cities, Urban areas, special area plans, subject plans and detailed neighborhood plans, among others.
 - Sectoral plans
2. Integration of the guideline policies, strategies and measures into the County sector plans, programs and projects. Ministries, Departments and Agencies (MDAs), County and National Departments identified in the plan to administer the policies, strategies and measures are required to translate them into action plans, programs and projects and to include them in their subsequent sector plans.
3. Formulation of policies, regulations and standards to guide development control.

5.3 Implementation Framework

The implementation of the various policies, strategies, measures, programs and projects under these guidelines will involve a wide range of actors. It will require a coordinated approach and partnership between the National and County Governments and non-state actors. It may require re-engineering of institutions and a number of actors to undertake the implementation through a harmonized approach.

The National Spatial Plan identified a multi-levelled framework for implementation of the plan that incorporates all levels of actors. In this regard, the institutions identified in the NSP to undertake implementation of the plan at County-level shall also be mandated to ensure implementation of this guidelines.

The following are the Institutions mandated to ensure implementation of the County Specific guidelines;

5.3.1 County Physical Planning Committee

The role of the County Planning Committee shall be to ensure aspirations of the guidelines are articulated in preparation of the County Spatial Plans, County Integrated Development Plans and Local Physical and Land Use Development Plans.

The composition of this committee consists of;

- i. The Governor who will be the Chairperson,
- ii. the Deputy Governor,
- iii. the County Executive Committee Members from various sectors
- iv. Directors from various relevant County Departments including Lands and Physical Planning, Economic planning, Agriculture, Industrialization, Tourism, Environment, Transport and Infrastructure

The functions of the committee include;

- 1) To promote effective integration between physical, economic and sectoral planning within the framework of county development policies.
- 2) To provide policy guidance for the implementation of strategic spatial projects
- 3) To ensure that the guidelines policies and measures are mainstreamed in the various county plans.

- 4) To mobilize resource for implementation of the guidelines

5.3.2 County Planning Unit (CPU)

The Technical Unit shall provide technical support to the various implementing County departments on issues relating to physical planning.

The CPU shall;

- i. Monitor the Implementation of the guidelines.
- ii. To disseminate components of the guidelines to the various county departments.
- iii. Update the County Physical Planning Committee on a regular basis on the implementation of the guidelines.

The County Director of Physical Planning shall be responsible for preparation of an annual state of planning report which shall among other things appraise the status of implementation of the guidelines.

5.3.3 National Land Commission

The National Land Commission shall play its oversight role in land use planning to ensure efficient implementation of the NSP and the guidelines. Other functions of the Commission in the implementation of the NSP and the guidelines include the following: To formulate mechanisms and parameters for monitoring and overseeing land use planning.

- i. To ensure that relevant planning authorities carry out their functions as required by law.
- ii. To make recommendations for improvements of the planning systems in the county.
- iii. To mobilize resources to support physical/land use planning.

5.4 Monitoring and Evaluation

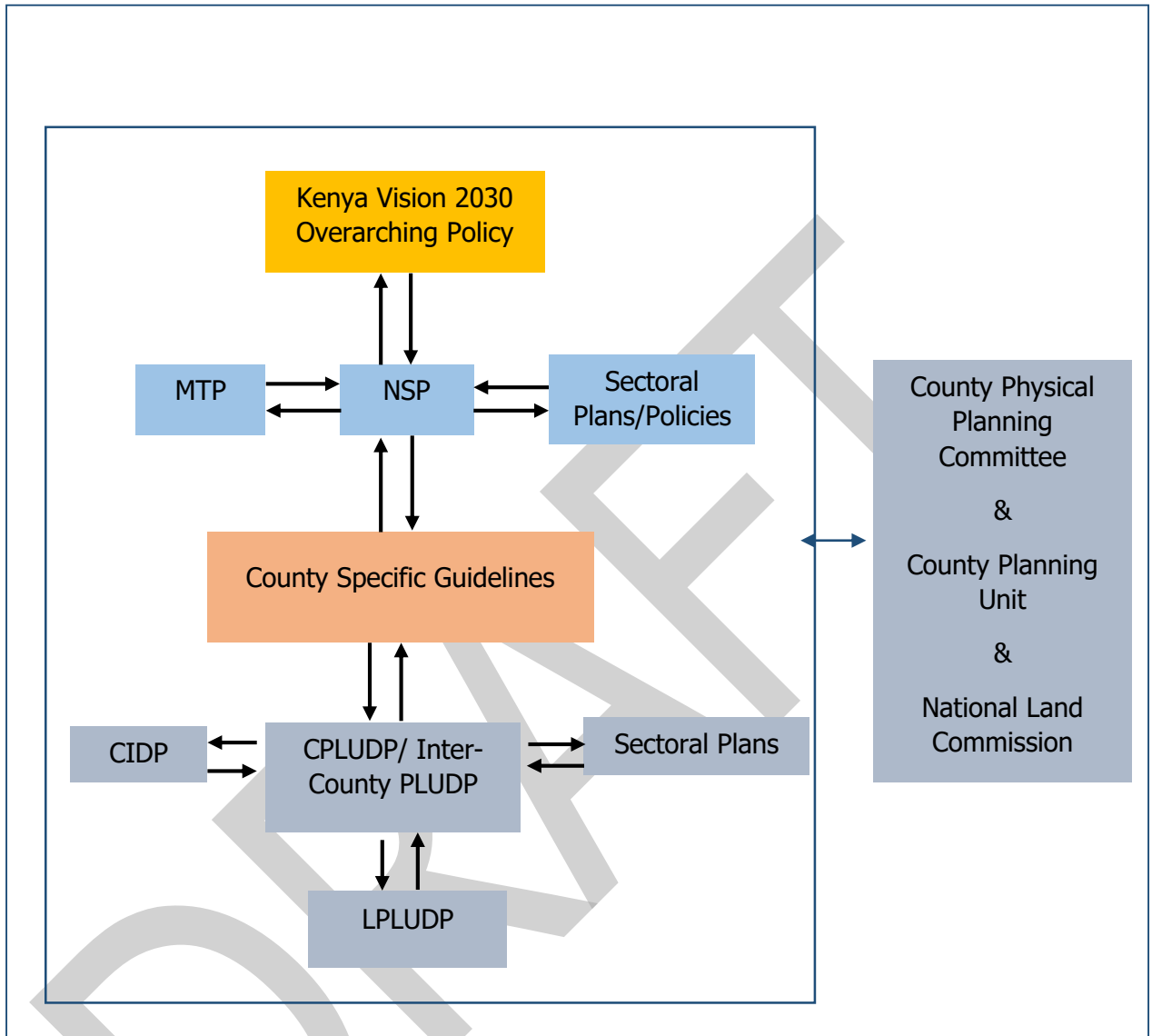
Implementation of the guidelines will be monitored and evaluated to measure both outputs and outcomes and ensure that the intended actions are implemented in a timely manner. To facilitate attainment of the objectives of the guidelines, performance indicators will be developed by the County Physical Planning Department

for efficient monitoring. Periodic reports will be prepared in relation to progress being made in their implementation.

The graphic below illustrates the implementation structure for County Specific guidelines.



Figure 4: NSP Implementation structure of the guidelines



Source: The National Spatial Plan, 2015 - 2045

5.5 Conclusion

The application of these guidelines will be undertaken by a number of actors and hence the need for a coordinated approach. The lead agency will be Kwale County Government which will be responsible for implementing various county specific initiatives proposed by the guidelines.

The National Government, County Government of Kwale, the private sector and the general public will be critical in actualizing the objectives of these guidelines. The County Physical Planning Committee shall develop a communication strategy to enhance the synergies.

The National Department of Physical Planning shall undertake sensitization, training and capacity building of the County Government and National Government institutions and agencies that will be involved in the implementation of these guidelines. Special attention will be given to the County physical planning units, as they will be expected to provide technical expertise in the implementation of the County specific policies and strategies.

DRAFT