



NATIONAL SPATIAL PLAN IMPLEMENTATION GUIDELINES FOR LAIKIPIA COUNTY

**Optimal productivity, sustainability, efficiency and
equity in use of our land and territorial space**



JUNE 2022

FOREWORD

The Constitution of Kenya apportions responsibility of planning to both National and County Governments. Under the Fourth Schedule on distribution of functions, Part 1 (21) and (32) mandates the National Government with the responsibility of formulating general principles of land planning, co-ordination of planning by the Counties, capacity building and technical assistance to the Counties. On the other hand, Part 2(8) allocates the function of County planning and development to County Governments. It is under these provisions that the County specific guidelines have been prepared.

The Department of Physical Planning prepared the National Spatial Plan (NSP) in response to the Kenya Vision 2030 to guide the spatial development of the country over a period of 30 years beginning in 2015.

It aims at achieving an organized, integrated, sustainable and balanced development of the country by providing a framework for better national organization and linkages between different activities within the national space.

To implement the Plan, the Counties are expected to play a key role by mainstreaming strategies, policies, and measures identified in the NSP into the County spatial planning systems.

The guidelines have identified planning policies, strategies, and measures that Plans at the County level are expected to mainstream and propagate. The policies address among others, the protection of rich agricultural land, development imbalances, conservation of environmentally sensitive areas, urban containment, and promotion of industrial development.

The guidelines provide direction on the existing potentials, the opportunities, the constraints/challenges inhibiting harnessing of the potentials, the strategies to apply, respective policies required, and the necessary measures to achieve optimal productivity, sustainability, efficiency and equity in the use of county land resources.

The guidelines are an opportunity on how best to refocus, vary and complement areas that require different approaches responding to country-specific needs and promote the livelihoods of their people, while contributing to the national aspirations of vision

2030, regional objectives of the Africa Agenda 2063, and international targets of sustainable development. The refocusing will also be handy in reviewing and making decisions on NSP which is due for review in 2025.

These guidelines are therefore a tool for enhancing this critical path and provide a direction for development planning by the Counties as they discharge their responsibility of preparing county and local physical and land use development plans. The guidelines will also ensure that the County Integrated Development Plans conform to the proposed County specific policy guidelines and measures.

DRAFT

PREFACE

The National Spatial Plan(NSP) recognizes that Kenya is greatly endowed with massive and diverse resources distributed over the national space that require an integrated and coordinated approach for optimal productivity and sustainability.

The County Specific Guidelines have been derived from the National Spatial Plan and provide a planning framework for the integration of the NSP into the county spatial planning system. They are clear statements linking the National Spatial Plan to Inter-County, County and lower-level Physical and Land Use Development Plans and provide clarification on the anticipated sustainable development outcomes of implementing the Plan.

The County Government will adopt, develop and implement their plans based on the policies, strategies, and measures articulated in the guidelines. The realized county plans are expected to guide, harmonize and facilitate development within the county, hence contributing to the overall implementation of the NSP.

The guidelines also form an efficient compass and monitoring tool for National and County Governments to jointly pursue sustainable planning and appropriate implementation mechanisms.

For the county to be nationally competitive, there is need to balance development and promote optimal utilization of land and land-based resources as well as cultivate an integrated approach in addressing the intertwined challenges of regional imbalances/inequalities, rural development, underutilization of the available resources, uncontrolled urbanization, environmental degradation and inefficient transportation. It is imperative therefore, to prioritize the implementation of this strategic document so as to promote balanced development and competitiveness across the county

EXECUTIVE SUMMARY

The County Specific Guidelines seek to facilitate the implementation of the National Spatial Plan by outlining policies, strategies and measures to guide County spatial planning and development and promote optimal productivity, sustainability, efficiency and equity in the use of land. They provide a framework for preparation of lower level Plans including Inter-County, County and Local Physical and Land Use Development Plans.

The disconnect between National and County Spatial Planning and development has resulted in uncoordinated and unbalanced development, therefore creating a need for a clear structure that links National, Regional and Local planning and development. This is achievable through integration of the policies, strategies and measures proposed by the guidelines into County Spatial Plans, Programs and Projects, to tackle challenges of unbalanced regional development, urbanization, national competitiveness and unsustainable use of land and natural resources.

The County Specific Guidelines are organized into five chapters detailing various facets. Chapter one provides an overview, purpose and justification of preparation of the guidelines. It also outlines the objectives that the guidelines intend to achieve and details the preparation process as well as intended users. This chapter highlights the key principles that form the basis for preparation of lower level plans including public participation, liveability, sustainable development, urban containment, smart urban growth among others.

Chapter two details the legal and policy provisions that the guidelines are anchored upon. They include, among others, The Constitution of Kenya, 2010, The Physical and Land Use Planning Act No.13 of 2019, County Government Act, 2012, Environmental Management and Coordination (Amendment) Act, 2015, Sessional Paper No. 01 of 2017 on National Land Use Policy and Sessional Paper No. 10 of 2012 on Kenya Vision 2030.

The third chapter analyses the county profile, detailing its location, size, bio-physical characteristics, socioeconomic status and the County's comparative advantage in relation to others. The locational context provides information on the geographical

position and bordering Counties while the biophysical context discusses the topography, hydrology and climate. The socioeconomic status indicates key economic drivers of the County and its population and demographic structure.

Chapter four presents the County specific issues and proposes development strategies to promote national competitiveness, optimal use of land and resources, rural development, balanced intra-county development and urbanization.

Additionally, it provides policy guidelines and measures for County advancement.

The final chapter five focuses on implementation and adoption of the guidelines. The implementation framework identifies institutions, County development programs and projects, and further ties them with responsible actors, resources and timeframes for effective execution. It proposes a framework for ensuring that the outlined policies, strategies and measures are adequately implemented.

DRAFT

TABLE OF CONTENTS

Table of Contents	vii
List of Tables	viii
List of Figures.....	viii
List of Maps	viii
1 CHAPTER 1: INTRODUCTION	1
1.1 Background	1
1.2 Purpose	1
1.3 Objectives	2
1.4 Scope	2
1.5 Justification	3
1.6 Application of the Guidelines	3
1.7 Process of preparing the Guidelines	4
1.8 Targeted users of These Guidelines	5
1.9 Key Principles	7
2 CHAPTER 2: THE POLICY, LEGAL AND PLANNING FRAMEWORK FOR THE GUIDELINES	8
2.1 Constitutional Context.....	8
2.2 Policy Context.....	8
2.2.1 Sessional Paper No. 10 of 2012 on The Kenya Vision 2030	8
2.2.2 Sessional Paper No. 1 of 2017 on National Land Use Policy.....	8
2.3 Legal Context	9
2.3.1 The Physical and Land Use Planning Act, 2019	9
2.3.2 County Governments Act, 2012.....	9
2.3.3 The Urban Areas and Cities (Amendment) Act, 2019	9
2.3.4 Environmental Management and Coordination (Amendment) Act, 2015.....	9
2.3.5 National Land Commission Act, 2012	10
2.4 Planning Context.....	10
2.4.1 National Spatial Plan (NSP).....	10
2.4.2 NSP linkage to other plans	11
3 CHAPTER 3: COUNTY PROFILE.....	13
3.1 Overview	13
3.2 Location context	13
3.3 Bio-physical context.....	15
3.4 Socio-economic status	15
3.4.1 3.3.1 Demography.....	15

3.4.2	Economy.....	16
3.4.3	Physical Infrastructure	16
3.4.4	Public Utilities	17
3.5	County’s Comparative Advantage	19
4	CHAPTER 4: DEVELOPMENT STRATEGIES AND POLICY GUIDELINES FOR LAIKIPIA COUNTY	20
4.1	County Specific Issues and Strategies.....	20
4.2	National Spatial Plan Policy Guidelines and Measures for Laikipia County ..	32
5	CHAPTER 5: IMPLEMENTATION AND ADOPTION OF THE GUIDELINES	41
5.1	Overview	41
5.2	Implementation Approaches	41
5.3	Implementation Framework	42
5.3.1	County Physical Planning Committee	42
5.3.2	County Planning Unit (CPU)	43
5.3.3	National Land Commission	43
5.4	Monitoring and Evaluation	44
5.5	Conclusion.....	46

LIST OF TABLES

Table 1: Facets as captured in the NSP.....	Error! Bookmark not defined.
Table 2: Targeted users of the NSP guidelines.....	5
Table 3: Population projection to 2045.....	16
Table 4: Sector specific issues and strategies	21
Table 5: NSP policy guidelines.....	32

LIST OF FIGURES

Figure 1: Policies as outlined in the NSP.....	10
Figure 2: Spatial Planning Linkage.....	11
Figure 3: Existing Situation of Laikipia County.....	Error! Bookmark not defined.
Figure 4: NSP Implementation organization structure.....	Error! Bookmark not defined.

LIST OF MAPS

Map 1: Location of Laikipia County	13
--	----

Map 2: Existing situation of Laikipia County18
Map 3: NSP Proposal of Laikipia County40

DRAFT

1 CHAPTER 1: INTRODUCTION

1.1 Background

The County Guidelines set out policies, strategies and measures that will guide the long-term spatial development of the county for a period of 30 years. They cover the entire county and defines the general trend and direction of its spatial development.

The guidelines have been developed in line with the four thematic areas as outlined in the NSP. They provide a guide to the Planning Authority at the county on how to incorporate the NSP policies, strategies and measures during the preparation of County Spatial Plans and other lower level plans like the Local Physical and Land Use Development Plans consequently implementing the NSP.

The NSP County Specific implementation guidelines summarize the County's existing potentials and opportunities, the constraints (challenges) inhibiting harnessing of the potentials, the applicable strategies and respective policies required, and the necessary measures to achieve optimal productivity, sustainability, efficiency and equity in the use of the county land resources. They act as a reference point

1.2 Purpose

The purpose of the County Specific Guidelines is to provide a planning framework for mainstreaming of the National Spatial Plan to the County spatial planning system.

The guidelines are intended to assist the County enhance the implementation of the NSP by linking the proposed county specific policies, strategies and measures into the County plans, programs and projects while putting measures in place for achieving them. The guidelines inform preparation of various County Physical Plans such as the County Physical and Land Use Development Plans.

For optimal implementation of these plans, a County Integrated Development Plan (CIDP) is essential since it is a sectoral and budgetary based plan that draws its implementation programs and projects from the County Physical Plans.

1.3 Objectives

The guidelines provide policies, strategies and measures to deal with challenges of regional imbalances/inequalities, rural development, underutilization of the available resources, urbanization, environmental degradation and inefficient transportation.

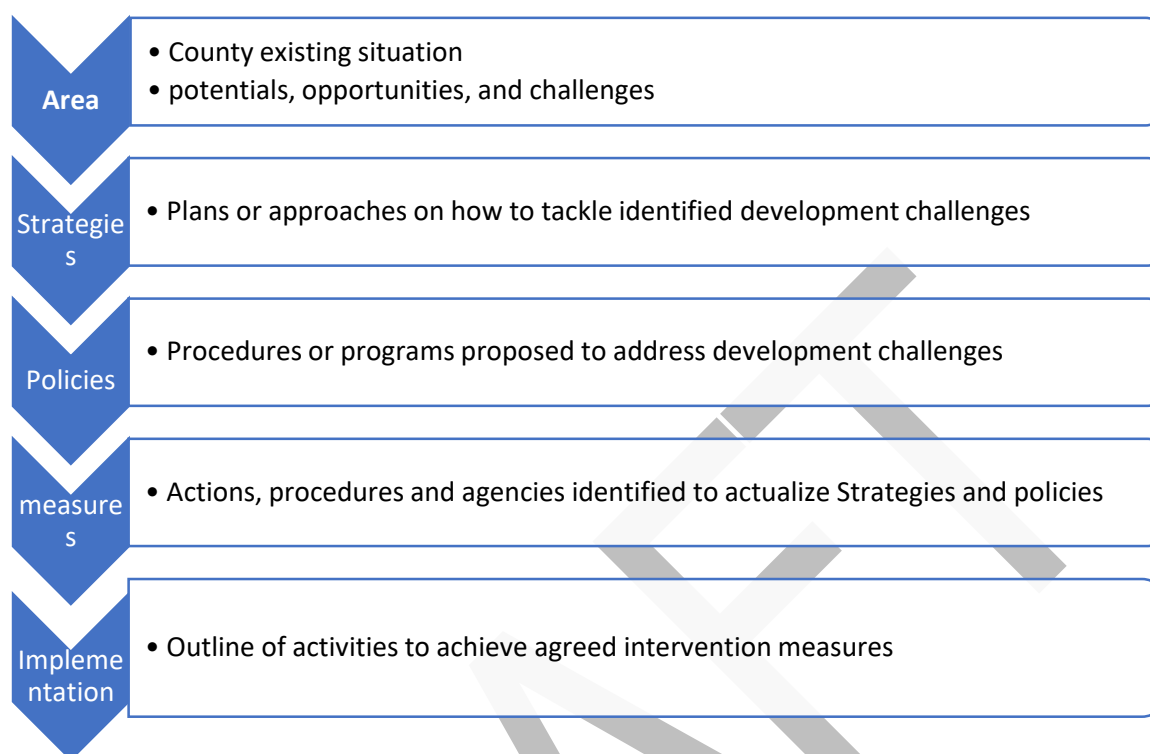
Specifically, the objectives are;

1. To sensitize the County on the provisions of the NSP
2. To promote synergy between National and County planning
3. To guide the County, implement the NSP
4. To identify the roles of the different actors in the implementation of the NSP.

1.4 Scope

The guidelines comprise policies, strategies and measures specific to Laikipia County covering approximately 9,462 km². The guidelines highlight the County's existing potentials and opportunities, the constraints (challenges) inhibiting harnessing of the potentials, the applicable strategies and respective policies required, and the necessary measures, actions, approaches, plans and procedures prescribed to achieve optimal productivity, sustainability, efficiency and equity in the use of the county's land resources and an outline of activities to execute agreed interventions as captured in the National Spatial Plan, as indicated in Figure 1 below. These guidelines are effective up to the year 2045.

Figure 1: The Scope of the Guidelines



Source: State Department for Physical Planning, 2022

1.5 Justification

Since the approval and launch of the NSP, its implementation has been undertaken in an uncoordinated manner hence the guidelines will provide a standardized approach for all Counties. The guidelines are also an important tool for tracking and evaluating implementation of the NSP both at National and County levels.

The preparation of County Spatial Plans and other lower-level plans which is a mandate of Counties has been slow and, in some Counties, has not begun at all. These guidelines are therefore a quick reference in preparation of county plans and for some Counties to help optimize land in the absence of these plans.

1.6 Application of the Guidelines

The guidelines will be used or applied in the following ways to achieve a more sustained and coordinated development of the County;

- To effectively coordinate planning between the National and the County Government;
- To improve the County Government's capacity to formulate, coordinate and implement integrated development policies, strategies, measures, programs and projects to address spatially unbalanced development;
- To inform strategic infrastructure policy and public investment decisions which support the achievement of balanced development in the County;
- To strengthen County inter-sectoral coordination within a spatial framework and provide the private sector with a clear context in which they can make investment decisions;
- To optimize the use of land and natural resources by providing a framework for making sustainable locational choices for sustainable development and conservation of land productivity in the County.

1.7 Process of preparing the Guidelines

The process involved reviewing the National Spatial Plan and identifying key issues, spatial policies, development strategies and measures specific to Laikipia County. These key issues, spatial policies, development strategies and measures will be realized through preparation of County and other lower-level plans.

Research was undertaken on various thematic areas to enrich the County specific issues and development strategies as well as policy guidelines and measures/interventions. Further, preparation of the guidelines considered the constitutional, policy and legal provisions on physical and land use planning. Expert opinion was sought on the identified issues, policies, measures and strategies for implementation viability.

The preparation of the guidelines was identified as one of the implementation tools of the NSP, in which key NSP issues, policies, strategies and measures were translated into specific action plans, programs and projects at the County level.

1.8 Targeted users of These Guidelines

These Guidelines have diverse consumers and application depending on prevailing circumstances and actors as demonstrated below:

Table 1: Targeted users of the NSP guidelines

User	Application
County Executive Committee Member in charge of Physical and Land Use Planning	<ul style="list-style-type: none"> • Preparation of county and lower-level plans • Linkage of planning structures • Quality control of the various county plans • Formulate county planning policies and strategies • Establish county specific planning institutions • Coordinate and implement county plans and policies
The County Director of Physical and Land Use planning	<ul style="list-style-type: none"> • Advising the county government on the impact of the county specific guidelines to the county • Preparation of County physical and land use development plans and other lower level plans • Formulating County physical and land use planning policies, guidelines, strategies, and standards; • Issuance of development permission and other development control instruments under The Physical and Land Use Planning Act, 2013.
Licensed physical and land use planners both in public and private sectors	<ul style="list-style-type: none"> • Prepare, coordinate and implement spatial plans • Quality control of plans and consultancy services • Formulate policies, strategies and development guidelines • Dispute resolution
County assembly	<ul style="list-style-type: none"> • Approval of strategic sectoral budgets such as planning • Vetting of various County specific plans • Formulation and passing of County planning legislation

	<ul style="list-style-type: none"> • Enhance capacity to oversee the executive on spatial planning
Ministries, Departments and Agencies	<ul style="list-style-type: none"> • Mainstreaming relevant NSP policies, programs and projects • Allocation of resources to priority areas, • Strengthening linkages with spatial planning in resource management
The National Land Commission (NLC)	<ul style="list-style-type: none"> • Oversight role in land use planning to ensure efficient implementation of the NSP • Ensure relevant planning authorities carry out their functions as required by the law
Practitioners in the built environment	<ul style="list-style-type: none"> • Advance NSP relevant policies, programs and projects hence optimization of land resource • Appreciate sectoral Linkages to spatial planning • Facilitate incorporation of the policies, strategies and measures into, County specific plans
Community, developers and investors	<ul style="list-style-type: none"> • Comprehend the County priority sectors and County Plans and policies • Complement County spatial planning and implementation measures • Making informed investment decisions
Development partners	<ul style="list-style-type: none"> • Reference frame for selecting and funding spatial planning activities • Understand planning linkages and implementation • Informed development decisions
Training institutions	<ul style="list-style-type: none"> • Compliment the curriculum for training of spatial planners • Understand the planning procedures and processes

1.9 Key Principles

The principles, as applied in the NSP, should guide and form the basis upon which the lower-level physical and land use plans are prepared. Further the principles should ensure sustainable, coordinated, and realistic development. They include the following:

- 1. Effective Public participation/engagement:** All plans shall be prepared in a participatory and consultative manner with relevant stakeholders and sectoral actors.
- 2. Urban containment/Compact cities:** Local plans shall strive to limit and control urban growth within the set urban boundaries to protect rich agricultural land, mitigate urban sprawl and reduce cost of infrastructural provision.
- 3. Livability:** The planning of urban areas shall enhance the livability index in the area of housing, environment, transportation, health, and social engagement. The urban areas must be economically viable, socially inclusive and ecologically sustainable.
- 4. Smart and green urban growth:** Plans shall promote sustainable use of energy, creation of green spaces, reduce the need for car travel, and promote use of local materials, support businesses, protection of heritage and creation of unique character.
- 5. Sustainable development:** Balancing social, economic and environmental dimensions of development and catering for current and future generations.
- 6. Promotion of ecological integrity:** Plans shall promote the protection and conservation of environmentally sensitive areas.
- 7. Promote public transportation:** Favor public transportation over private transport to ensure efficiency and functionality of urban places.
- 8. Balanced development:** Plans to ensure there/ is balanced development in the County to cure inequalities.

2 CHAPTER 2: THE POLICY, LEGAL AND PLANNING FRAMEWORK FOR THE GUIDELINES

2.1 Constitutional Context

The formulation of these guidelines took into account the Constitution of Kenya 2010 aspirations and Principles. Article 66 of the Constitution of Kenya 2010 gives the State powers to regulate use of any land and property in the interest of land use planning among others. The guidelines are therefore within and in response to the aspirations, values and principles as provided for in the constitution.

2.2 Policy Context

2.2.1 Sessional Paper No. 10 of 2012 on The Kenya Vision 2030

Kenya Vision 2030 is the overarching national development framework which all plans should be aligned to. The preparation of all spatial plans should take cognizance of the aspirations, foundations and development concepts of the vision. The preparation of the first National Spatial Plan is identified in Kenya Vision 2030 as a flagship project and is regarded as one of the foundations for socio-economic transformation. Hence the need for linkage between national planning and county planning which will be achieved through mainstreaming NSP requirements into CSPs and other lower-level plans by preparing NSP county specific guidelines to implement the NSP at lower levels.

2.2.2 Sessional Paper No. 1 of 2017 on National Land Use Policy

The policy was formulated to address the various challenges related to land use and ensure efficient, productive and sustainable use of land. The main goal of the policy is to provide legal, administrative, institutional and technological framework for optimal utilization and productivity of land related resources in a sustainable and desirable manner at national, County and community levels.

The policy recommends the preparation of a National Spatial Plan to provide an integrated framework for the development of the country including guidelines for sustainable rural and urban planning management. The policy also provides for the preparation of planning guidelines, policies and standards to be observed by County

Governments and other sectoral agencies within the frameworks of approved physical and land use development plans. These guidelines have been prepared on this basis and they are to be observed by counties in the implementation of the National Spatial Plan.

2.3 Legal Context

Various Acts of Parliament are in place to provide the legal framework for the implementation of the mandate provided for in Article 66 of the Constitution. The Physical and Land Use Planning Act, 2019, The Urban Areas and Cities (Amendment) Act, 2019, County Governments Act No. 17 of 2012, The Land Act No. 6 of 2012, National Land Commission Act No. 5 of 2012 among others. The NSP County specific guidelines are prepared in this context and meet this criterion.

2.3.1 The Physical and Land Use Planning Act, 2019

This is the overarching statute that provides for formulation of both national and county physical and land use planning policies, guidelines and standards. The Act further provides for administration, types, content, process and approval of the various types of Physical and Land Use Development Plans.

2.3.2 County Governments Act, 2012

This statute mandates County Governments to carry out the planning function at the county level. The guidelines enhance the capacity to prepare the various county level plans that meet the recommended quality and standards.

2.3.3 The Urban Areas and Cities (Amendment) Act, 2019

The statute provides for classification of urban areas and cities, their governance and management, and for integrated development planning. The guidelines are a basis for preparation of these lower-level plans.

2.3.4 Environmental Management and Coordination (Amendment) Act, 2015

The Act provides for the establishment of an appropriate legal and institutional framework for the management of the environment as well as guidelines relating to

environmental management and prevention or abatement of environmental degradation. The guidelines take cognizance of this Act and will be implemented within the framework.

2.3.5 National Land Commission Act, 2012

Provides the National Land Commission the management and administration of public land on behalf of the National and County Government. The guidelines fall within the ambit of this statute and will facilitate their monitoring and oversight responsibilities.

2.4 Planning Context

2.4.1 National Spatial Plan (NSP)

The National Spatial Plan (NSP) covers the whole country encompassing the exclusive economic zone. The NSP outlines policies and strategies geared towards influencing desired future distribution and organization of human activity outlined in Vision 2030 and sectoral policies and plans. It aims at achieving economic efficiency and balanced development. The various County Spatial Plans should be aligned to the policies outlined in the NSP as demonstrated in Figure 2 below.

Figure 2: Policy focus of the NSP



Source: National Spatial Plan, 2015-2045

To actualize the NSP a comprehensive implementation strategy has been proposed that embraces a multiplicity of actors including National Government Ministries, Departments and Agencies, County Governments and the National Land Commission. The strategy proposes the establishment of the following institutions as key in the implementation of the Plan; The National Physical Planning Council, the National Technical Committee and the County Physical Planning Committee.

2.4.2 NSP linkage to other plans

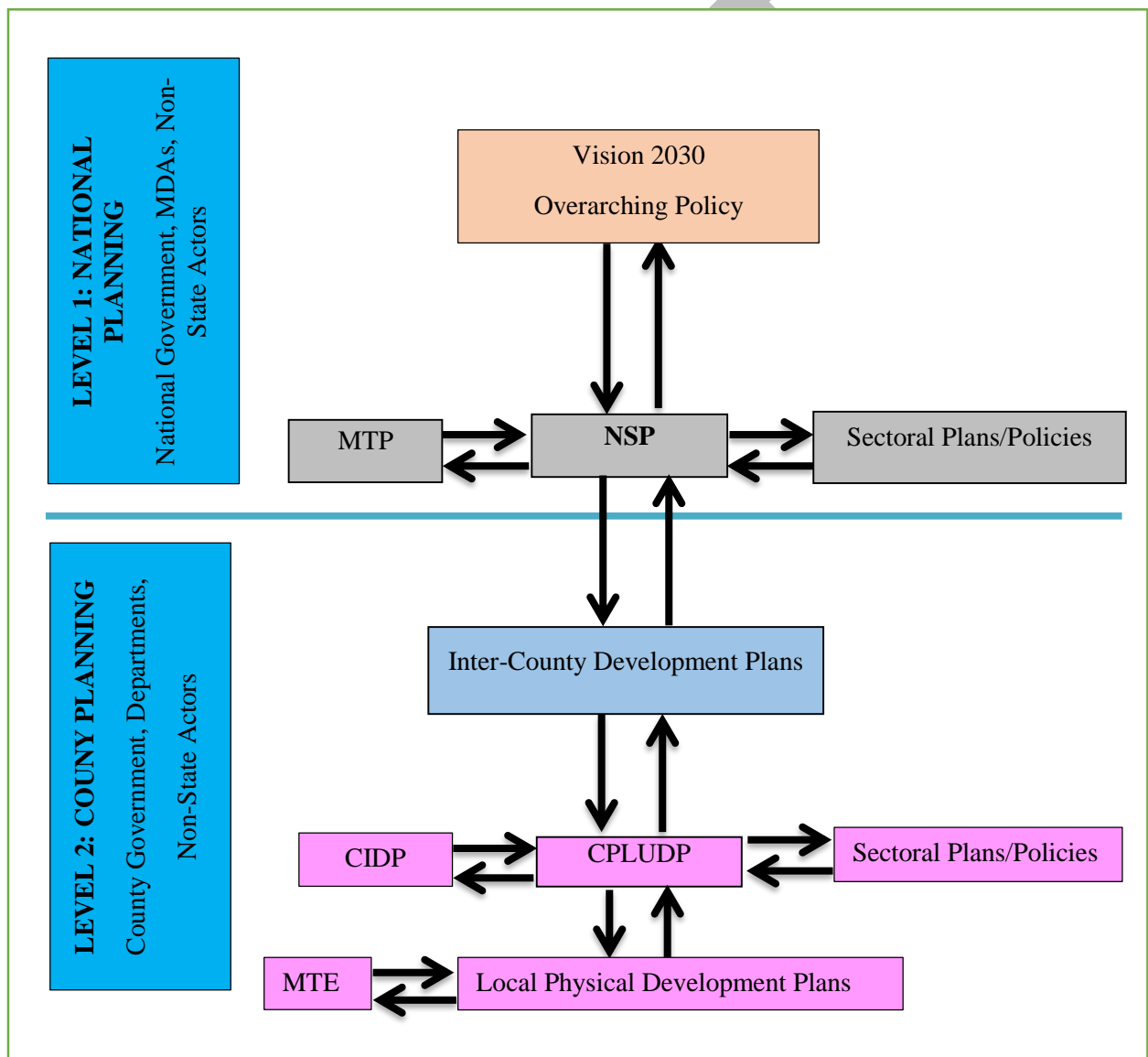
The linkage of the National Spatial Plan (NSP) to sector and lower level plans is key to realization of its aspirations and objectives and the successful actualization of the sector and lower level plans. The NSP linkage is through the provision of a spatial framework to ground the Vision 2030 flagships projects and form a basis for coordination of sectoral policies and lower level plans. On the other hand, the sectoral policies and plans informs the preparation of the NSP by provision of policies, issues, programs and projects.

The NSP provides policies, measures and strategies that the inter county and county plans draws from while being prepared. The Inter county and county plans take into considerations the policies measures and strategies of the NSP and implements them thereby actualizing the aspiration of NSP.

The County Physical plans provides a framework, policies and strategies at the county level where the CIDP which is a sectoral based plan draws its programs and projects for implementation. The implementation of the CIDP in turn leads to realization of the objectives of the County physical plans. The sector polices and plans at county level informs the preparation of the county physical development by providing sector specific issues and strategies to be incorporated

The graphic below illustrates the country's planning Linkage.

Figure 3: NSP linkage to other plans



Source: National Spatial Plan

3 CHAPTER 3: COUNTY PROFILE

3.1 Overview

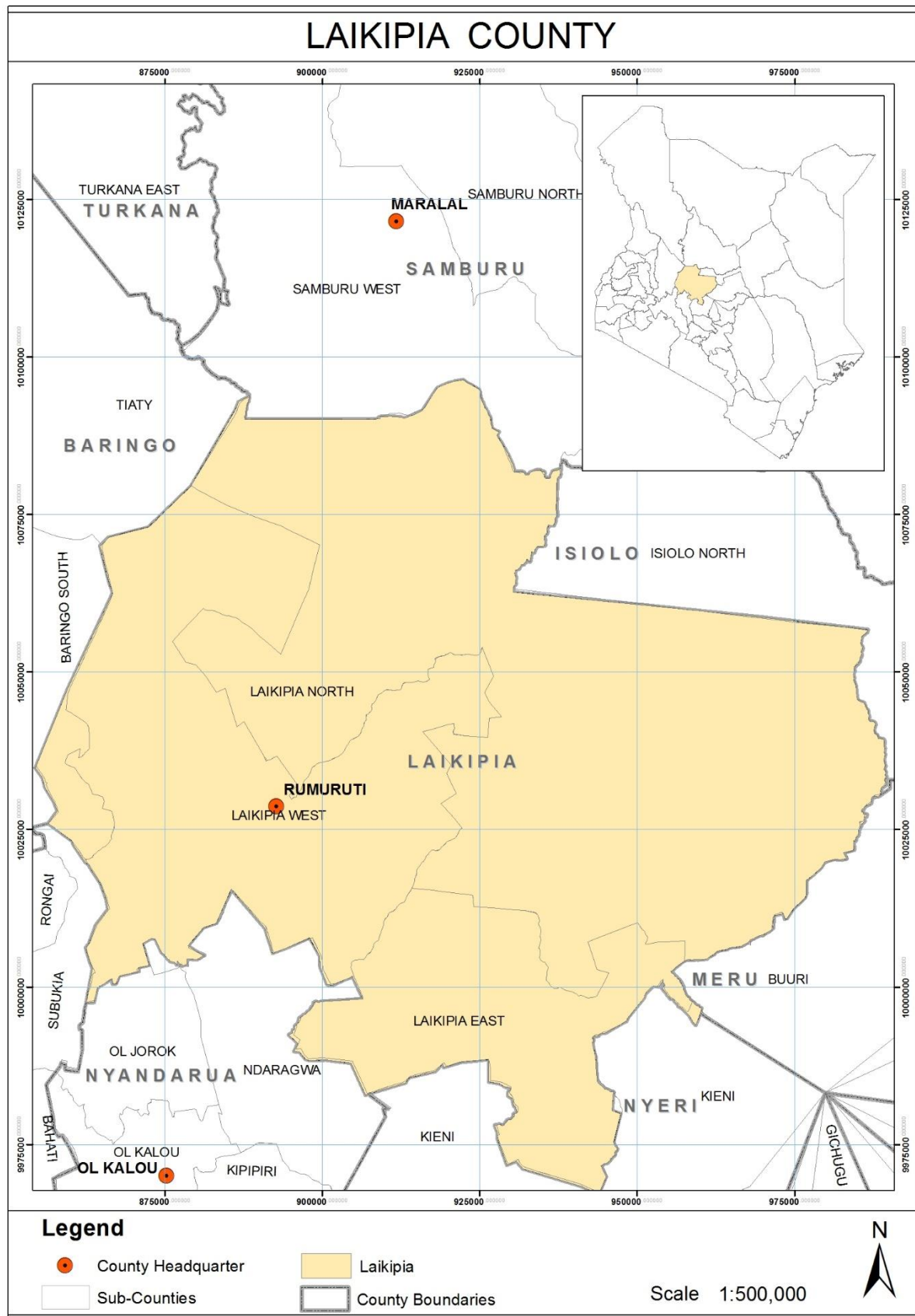
This chapter discusses a set of relevant information about Laikipia County. It provides information on the location, size, bio-physical features, socioeconomic status and looks at the comparative advantage of Laikipia County as compared to the other Counties in Kenya.

3.2 Location context

Laikipia County is located on the Equator in the Central Rift Valley region of the country. It lies between latitudes 0° 18" South and 0° 51" North and between longitude 36° 11" and 37° 24' East. The County borders Samburu County to the North, Isiolo County to the North East, Meru County to the East, Nyeri County to the South East, Nyandarua County to the South, Nakuru County to the South West and Baringo County to the West. It covers an area of 9,462 km² and ranks as the 15th largest county in the country by land size.

Map 1 below shows the location of the County in national and regional context.

Map 1: Location of Laikipia County



Source: State Department for physical planning, 2022

3.3 Bio-physical context

Laikipia County landscape consists of a plateau bordered by the Great Rift Valley to the West, the Aberdare mountain ridge to the South and Mt. Kenya to the South East. The county has an altitude that ranges between 1,500 m above sea level at Ewaso Nyiro basin in the North to a maximum of 2,611 m above sea level around Marmanet forest. The other areas of high altitude include Mukogodo and Ol Daiga Forests in the eastern part of the county at 2,200 m above sea level.

The county's main drainage feature is Ewaso Nyiro North basin with its tributaries having their sources in the slopes of the Aberdare and Mt. Kenya. These tributaries include Nanyuki, Timau, Rongai, Burguret, Segera, Naromoru, Engare, Moyok, Ewaso Narok, Pesi and Ngobit rivers. Besides the aforementioned, there are two major swamps in the county; Marura and the Ewaso Narok Swamp. It slopes gently from the highlands in the South to the lowlands in the North

The County's annual average rainfall ranges between 400mm and 750mm though higher annual rainfall totals are observed on the areas bordering the slopes of Mt. Kenya and the Aberdare Ranges. North Marmanet receives over 900mm of rainfall annually; while the drier parts of Mukogodo and Rumuruti receive slightly over 400mm annually. The Laikipia plateau receives about 500mm of rain annually, while Mukogodo Forest receives an average rainfall of about 706mm annually. The annual mean temperature of the county ranges between 16° C and 26° C

3.4 Socio-economic status

3.4.1 Demography

According to the 2019 Kenya Population and housing census the population of Laikipia County was estimated at 518,560 with an annual growth rate of 2.6%. Of this 259,440 are males, 259,102 females and 18 intersex persons. There are 149,271 households with an average household size of 3.4 persons per household and a population density 54 people per square kilometre. Below is a projection of the population up to 2045 as per the planning period of NSP:

Table 2: Population projection to 2045

Year	2019	2020		2025		2030		2035		2040		2045	
Population size	518,560	532,025		604,880		687,712		781,886		888,951		1,010,683	
		M	F	M	F	M	F	M	F	M	F	M	F
		266176	265830	302627	302232	344069	343620	391184	390675	444750	444171	505654	504994
Households	149,271	156478		177906		202268		229967		261456		297260	
Area	9,532.2 km ²												
Density	54	56		63		72		82		93		106	

Source: State Department for physical planning, 2022

3.4.2 Economy

Agriculture is the principal economic activity contributing to 75 per cent of the household incomes. The agriculture sector employs up to 60 per cent of the labour force in the county. **Livestock farming** is also another primary economic activity. Over 80% of people depend on livestock farming with 37% of Laikipia being used for large-scale ranching, 32% used by pastoralists, 21% used by small-hold farmers, and 5% used exclusively for wildlife-based tourism.

A total of approximately 3,118 km² of Laikipia is used for informal grazing by semi-nomadic pastoralists. Other economic activities include: Trade and commerce, industry, tourism and mining.

3.4.3 Physical Infrastructure

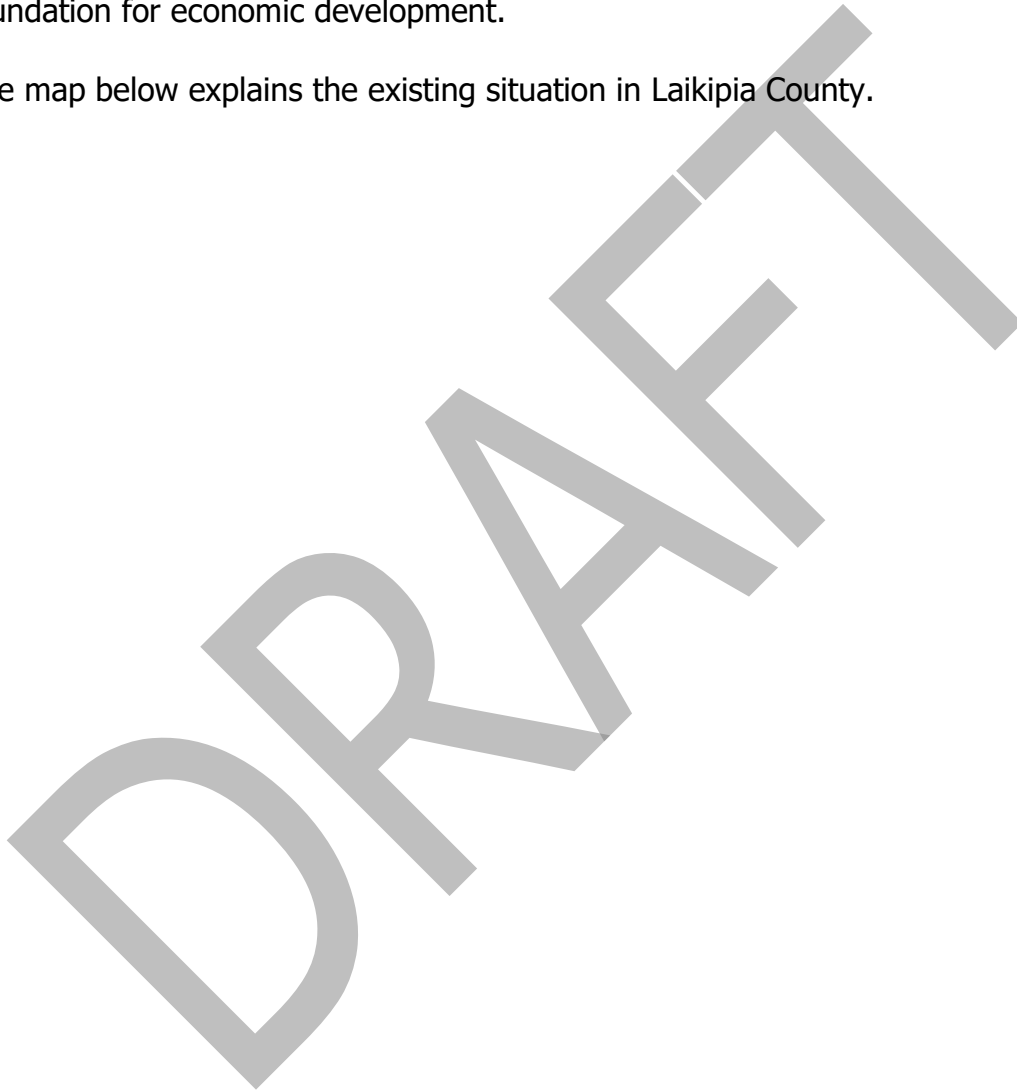
Infrastructure is key to the achievement of the National Spatial Plan objectives of global competitiveness, regional balance and optimal utilization of land and other resources. Laikipia has fairly developed infrastructure including transport, physical and social infrastructure. Which have a high potential of economically empowering its People and attracting private investors if well maintained. The sector faces problems regarding poor connection, low coverage, unreliability, prohibitive costs, skewed distribution and low/surpassed design. To rectify this situation clear indicative policy, strategies and measures must be developed and implemented to achieve overall efficiency.

The major transport routes serving the county are Nairobi-Isiolo-Marsabit (A102), Gilgil - Rumuruti (C55), Rumuruti - Mararal (A2) and Nakuru - Nyeri (B65).

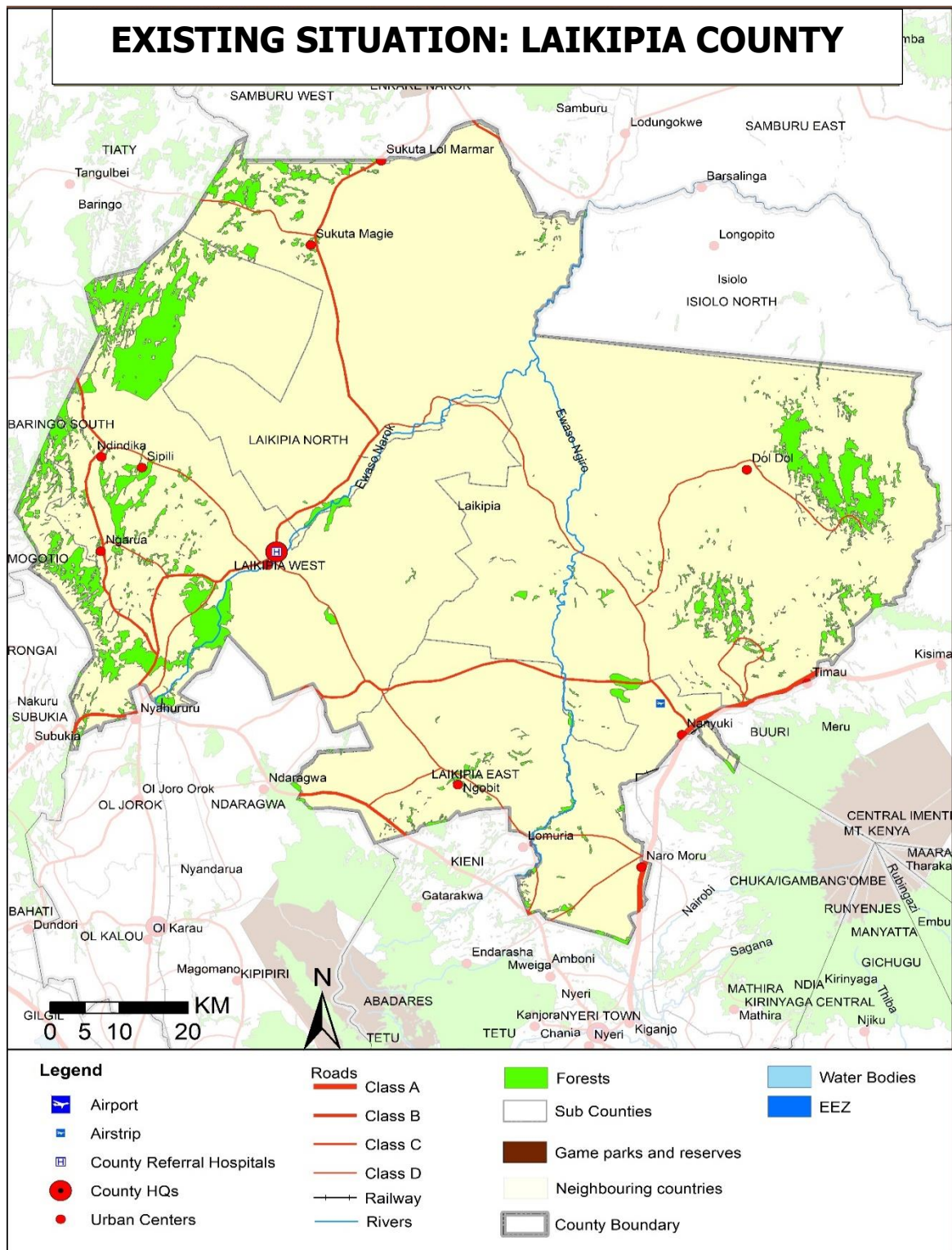
3.4.4 Public Utilities

To achieve a spatial and balanced regional development and meet demands of a growing population, there is need to develop and enhance economic infrastructure such as water services, waste management, energy and ICT to provide the foundation for economic development.

The map below explains the existing situation in Laikipia County.



Map 2: Existing situation in Laikipia County



3.5 County's Comparative Advantage

- a) Land and Natural resources: Laikipia County is endowed with several natural resources including pasture rangelands, forests, wildlife, undulating landscapes and rivers. Gazetted and non-gazetted forests cover a total area of 580 square kilometres. Laikipia is drained by the Ewaso Nyiro River and its tributaries. The County is endowed with vast land.
- b) Over 20% of the County's total land is arable. Besides these the county has a greater potential for irrigation as over 62,812 Acres (254 Km²) of land can be put under irrigation as well as the presence of many water sources.
- c) The County has a high potential for large-scale livestock production given the vast rangeland areas and the fact that land ownership in the county is predominantly on group ranches.
- d) There are several tourist attraction sites which include unique landscapes as well as being richly endowed with wildlife that contributes to county's source of revenue and the community will earn livelihood from the activities that would be taking place from there.
- e) Laikipia County has a reliable sunshine throughout the year hence an unexploited natural resource for solar energy. Commercial wind electricity may also be generated along the escarpments towards the Rift Valley floor.
- f) The main minerals found in the county include red sand, ballast, murram and gravel. There also exists one under-utilized crushing plant at Nanyuki.

4 CHAPTER 4: DEVELOPMENT STRATEGIES AND POLICY GUIDELINES FOR LAIKIPIA COUNTY

4.1 COUNTY SPECIFIC ISSUES AND STRATEGIES

The National Spatial Plan provides strategies for spatial growth and development across the country. The strategies are aimed at providing a spatial expression to Kenya Vision 2030 and other sector policies.

This section seeks to provide strategies for spatial growth and development of the county by addressing the factors that prevent the county from achieving the intended goals and objectives. The development strategies discussed are aimed at managing the global impacts, optimizing use of natural resources, creating a county balance and transforming rural areas. Specifically, the development strategies have been proposed to address the following aspects of the county's development agenda.

- Managing the national competitiveness
- Optimal use of land and other resources
- Balanced county development
- Rural development in the county
- Urbanization

The following are detailed NSP sector-specific issues and strategies that apply to Laikipia County.

Table 3: Sector specific issues and strategies

Strategy 1: Enhancing National Competitiveness		
Opportunities	Constraints	Strategies
<ul style="list-style-type: none"> ✓ Strategic location of the county which cuts across the agro-climatic zone V and presence of the Nyeri-Nanyuki (A2) highway ✓ Member of the Central Region Economic Bloc 	<ul style="list-style-type: none"> ✓ Poor state and lack of connectivity of the roads ✓ Inadequate linkages with neighboring counties ✓ Inadequate funds to manage the Bloc 	<ul style="list-style-type: none"> ✓ Plan and provide appropriate hierarchy of roads to increase internal and external linkages within the county ✓ Leverage of the potential areas of collaboration with bloc members. ✓ Provide adequate and appropriate infrastructure
Strategy 2: Optimizing Land and Natural Resources		
Agriculture		
Opportunities	Constraints	Strategies
<ul style="list-style-type: none"> ✓ Agro-climatic zone (V) with potential for agricultural production and ranching. ✓ Irrigation potentials through rivers, swamps and vast land that is generally flat 	<ul style="list-style-type: none"> ✓ Declining water flow due to persistent droughts, ✓ Destruction of catchment areas ✓ Poor water quality resulting from excessive industrial pollution ✓ Reduced soil fertility and depth 	<ul style="list-style-type: none"> ✓ Formulate appropriate policy framework to stop further fragmentation of agricultural land and explore land consolidation strategy ✓ Provide adequate and appropriate infrastructure

<ul style="list-style-type: none"> ✓ Fertile soils in the south-western parts of the County 	<ul style="list-style-type: none"> ✓ Poor agricultural support infrastructure and irrigation facilities. ✓ Inadequate adaptation of modern methods and technology ✓ Uneconomical sub-division of agricultural land 	<ul style="list-style-type: none"> ✓ Adopt modern methods and practices as well as technology in the entire range of agricultural capabilities in the county ✓ Formulation of policies to tap the capability and potentials of the county ✓ Restrict the conversion of agricultural land to any other use. ✓ Collaborate with other partners to enhance the irrigation potential ✓ Introduction of drought resistant crops and diversification of crops varieties
<p>Large scale livestock areas</p> <ul style="list-style-type: none"> ✓ Land ownership is mainly held in ranches 	<ul style="list-style-type: none"> ✓ Human-Human and human wildlife conflicts ✓ Overstocking ✓ Insufficient water resources 	<ul style="list-style-type: none"> ✓ Transportation infrastructure in rangeland areas should be improved ✓ Establish the land carrying capacity

<ul style="list-style-type: none"> ✓ Pastoralism culture of the dominant communities ✓ Rangeland areas for ranching expansion ✓ Agricultural extension, training and research institution 	<ul style="list-style-type: none"> ✓ Underutilization of rangeland areas. ✓ Poor agricultural support infrastructure ✓ Insecurity of tenure ✓ Effects of climate change ✓ Emerging land uses 	<ul style="list-style-type: none"> ✓ Encourage communal ranching to replace pastoralism ✓ Mapping out of wildlife migratory corridors ✓ Encourage Plan-led development that is responsive to local needs and resources
Environment (Conservation Area & Protection Area)		
Opportunity	Constraint	Strategy
<ul style="list-style-type: none"> ✓ Conservation areas (ASAL) ✓ Water catchment area, wetlands and natural forests (Rank 1 Protection areas); Water pans, springs and rivers (Rank 2 Protection areas). 	<ul style="list-style-type: none"> ✓ Air pollution and industrial pollution ✓ Fragile eco-ecosystem ✓ Weak enforcement of environmentally friendly policies ✓ Encroachment of the major water catchment areas ✓ Over abstraction of water for horticultural activities ✓ Population pressure ✓ Overstocking ✓ Soil erosion ✓ Deforestation 	<ul style="list-style-type: none"> ✓ Increase forest cover through afforestation, re-afforestation and agro forestry ✓ Formulate policy frameworks to protect water catchment areas. ✓ Formulate policy frameworks to contain human settlement and hinder land use change within these areas. ✓ Delegation and gazettelement of delineated natural forests, wetlands and water towers.

	<ul style="list-style-type: none"> ✓ Pollution ✓ Drying up of water sources; 	<ul style="list-style-type: none"> ✓ Rehabilitation of wetlands, water towers and natural forests in the county
Natural Resource		
Opportunity	Constraint	Strategy
<ul style="list-style-type: none"> ✓ High potential for green energy power production ✓ Vast land resource ✓ Permanent rivers Ewaso Nyiro, Ngare Naro, Pesi, Suguroi, Mutara, Nanyuki, and Burguret rivers. ✓ Ewaso Narok and Marura Swamps ✓ Minerals including red sand, ballast, murram and gravel 	<ul style="list-style-type: none"> ✓ Under exploitation of geothermal, hydroelectric and wind energy ✓ Underutilization of geothermal energy ✓ Inadequate technology and exploration infrastructure ✓ High costs of exploiting available natural resources ✓ Inadequate rainwater harvesting technology 	<ul style="list-style-type: none"> ✓ Adopt sustainable exploitation of the available natural resource potential ✓ Optimal utilization of developed green energy resources ✓ Invest in appropriate technology and infrastructure ✓ Collaborate with other partners to enhance the green energy potential ✓ Plan and provide appropriate storm water management infrastructure to optimize rainwater harvesting

		<ul style="list-style-type: none"> ✓ Formulate policies to guide regulation of underground water exploitation ✓
Industrial		
Opportunity	Constraint	Strategy
<ul style="list-style-type: none"> ✓ Manufacturing based Industries: Presence of include red sand, ballast, murrum and gravel ✓ Agro-based industries: <ul style="list-style-type: none"> - Raw agricultural products - Large scale livestock production areas ✓ Cottage industries (Crafts and artifacts) 	<ul style="list-style-type: none"> ✓ Poor linkage to the markets due to inadequate internal and external connectivity and support infrastructure ✓ Low technological adaptation for value addition ✓ Prohibitive cost of production ✓ price fluctuation ✓ Poor regulation in waste management and enforcement of the existing regulatory framework. 	<ul style="list-style-type: none"> ✓ Plan and provide appropriate infrastructure to increase internal and external linkages within the county ✓ Provide appropriate technology to enhance value addition. ✓ Diversify energy production sources to reduce costs of production and enhance its reliability ✓ Prepare an industrial master plan
Tourism		
Opportunity	Constraint	Strategy
<ul style="list-style-type: none"> ✓ A wide variety of wildlife and cultural tourist attractions ✓ High potential for wildlife conservation 	<ul style="list-style-type: none"> ✓ Little exploitation of tourism potential due to poor quality and inadequate infrastructure 	<ul style="list-style-type: none"> ✓ Plan and provide appropriate tourism support infrastructure.

	<ul style="list-style-type: none"> ✓ Encroachment of human activities into the protected areas ✓ Less assertive marketing strategies ✓ over reliance on foreign tourism and few marketing ventures targeting nontraditional tourists ✓ poaching ✓ human- wildlife conflicts 	<ul style="list-style-type: none"> ✓ Strict enforcement of the existing regulations for safeguarding protection areas ✓ Identify and delegate potential protection and conservation areas for gazettement ✓ Promote domestic tourism by providing incentives and subsidies ✓ Prepare wildlife management.
Transport		
<ul style="list-style-type: none"> ✓ 1,038.1 Km of classified road network: Nyeri-Nanyuki(A2), Nyeri-Nyahururu, and Nyahururu-Kinamba-Rumuruti roads. ✓ 5 airstrips (majority of which are managed by the private ranching community) ✓ Railway network: 23 kilometers in Nanyuki and 2 Kilometers in Nyahururu Town 	<ul style="list-style-type: none"> ✓ Poor state and lack of connectivity of the roads ✓ Ineffective public transport system ✓ Inadequate NMT Infrastructure ✓ Inappropriate modal split ✓ Encroachment ✓ Inadequate terminal facilities ✓ Poor runway condition and inadequate basic airstrip facilities ✓ Poor condition of the railway infrastructure 	<ul style="list-style-type: none"> ✓ Plan and provide appropriate hierarchy of roads to increase internal and external linkages within the county ✓ Prepare and implement sustainable mobility plans ✓ Enforce a regulatory standard requirement for all public transport service operators ✓ Delineate and enforce road reserve extents ✓ Improve the condition of all County roads to motor able standards

		<ul style="list-style-type: none"> ✓ Rehabilitate the existing railway infrastructure ✓ Improve and expand existing airstrips
Public Utilities		
Water and Sanitation		
<ul style="list-style-type: none"> ✓ Availability of water sources (rivers, springs, boreholes, wells, dams) ✓ Existing sewerage system 	<ul style="list-style-type: none"> ✓ Encroachment of human activities into catchment areas ✓ Population increase resulting to high demand surpassing its supply ✓ Contamination of the available water (Water pollution) ✓ Inadequate sewerage coverage and treatment facilities. 	<ul style="list-style-type: none"> ✓ Effective enforcement of environmental and natural resources policies, laws and regulations ✓ Improve access to clean and safe water ✓ Increase access to adequate sanitation facilities ✓ Investments in water harvesting technologies and storage facilities ✓ Appropriate sanitation infrastructure including collection, disposal and treatment system be developed in all urban areas
Solid waste management		

<ul style="list-style-type: none"> ✓ Presence of dumpsites 	<ul style="list-style-type: none"> ✓ Increased solid waste generation due to increased population pressure ✓ Inadequate solid wastes management facilities 	<ul style="list-style-type: none"> ✓ Provide solid waste management facilities ✓ Promote the, Reduce, Reuse, Recycle (3Rs) ✓ Explore other modes of solid waste management such as recycling of waste materials and waste-energy facilities.
Energy		
<ul style="list-style-type: none"> ✓ High solar intensity ✓ Strong winds ✓ Biogas 	<ul style="list-style-type: none"> ✓ High energy demand ✓ Inadequate technology and infrastructure ✓ High initial costs for harnessing renewable energy ✓ Low electricity connectivity especially in rural areas. ✓ High electricity connection tariffs ✓ Lack of relevant policy framework to guide tapping and use of energy sources 	<ul style="list-style-type: none"> ✓ Develop infrastructure for harnessing, transmitting and distributing renewable energy ✓ Formulate policy framework to guide exploitation of green energy ✓ Implement Energy efficiency systems and energy demand management systems
ICT		

<ul style="list-style-type: none"> ✓ Existing National Fiber Optic network (NOFBI) ✓ High demand for ICT services 	<ul style="list-style-type: none"> ✓ Poor access to ICT infrastructure ✓ High cost of ICT equipment 	<ul style="list-style-type: none"> ✓ Increase ICT relevant infrastructure ✓ Mainstream ICT in all sectors to promote service delivery ✓ Improve ICT adoption ✓ improve on existing platforms such as Huduma Centre, BPO services and E-government
Sporting and social facilities		
<ul style="list-style-type: none"> ✓ Nanyuki and Nyahururu stadia 	<ul style="list-style-type: none"> ✓ Inadequate sporting facilities and coaching services ✓ Dilapidated stadia, community cultural centers and social halls ✓ Untapped/underutilized potential in sports. 	<ul style="list-style-type: none"> ✓ Construction of social and sporting facilities (stadia, cultural centres and social halls) ✓ Formulation of a sports management legislative policy to govern sporting activities in the County
Strategy 3: Balanced Intra-County Development		
<ul style="list-style-type: none"> ✓ Resource endowment ✓ Transportation network ✓ Enabling policy framework 	<ul style="list-style-type: none"> ✓ Weak linkages between rural and urban areas. ✓ Inadequate infrastructural facilities and services ✓ Under-exploitation of resources 	<ul style="list-style-type: none"> ✓ Establish strong rural urban linkages ✓ Promote industrialization and value addition in less developed regions ✓ Promote investment in sustainable tourism

	<ul style="list-style-type: none"> ✓ Uneven distribution of social infrastructure 	<ul style="list-style-type: none"> ✓ Promote irrigation activities for improved productivity ✓ Promote equal distribution of social infrastructure
Strategy 4: Promoting Rural Development		
<ul style="list-style-type: none"> ✓ Resource endowment in rural areas (agriculture, large-scale livestock production and tourism) ✓ Human resource (both skilled and unskilled) ✓ Existing physical and social infrastructure (roads, schools, health centres, administrative units) ✓ Devolution 	<ul style="list-style-type: none"> ✓ Inefficient and dilapidated infrastructure facilities and services ✓ Weak rural-urban linkages ✓ Underutilization of the resources in the rural areas ✓ inappropriate transport infrastructure and utilities ✓ The dispersed nature of the human settlements, ✓ Fragmentation of land into uneconomical parcels due to population pressure 	<ul style="list-style-type: none"> ✓ Promote rural industrialization and value addition in less developed regions ✓ Plan and provide strong rural urban linkages ✓ Sustainable utilization of available resources in the rural areas ✓ Plan and develop appropriate transport and infrastructural facilities and services to support the exploitation of resources ✓ Formulate appropriate policy framework to stop further fragmentation of agricultural land and explore land consolidation strategy ✓ Modernize agriculture to promote high yield production
Strategy 5: Urbanization		

<ul style="list-style-type: none"> ✓ Human resource (both skilled and unskilled) ✓ Existing infrastructure ✓ Devolution of governance ✓ Establishment of equalization of funds 	<ul style="list-style-type: none"> ✓ Weak rural-urban linkages ✓ Rapid urbanization rates ✓ Weak and uncoordinated development control and enforcement systems. ✓ Poor enforcement of existing legislation on housing development and land use ✓ Poor implementation of development plans and planning policies ✓ Deteriorating infrastructure ✓ Poor waste management ✓ Land and governance issues. ✓ Proliferation of informal settlements ✓ Land and governance issues ✓ Urban sprawl 	<ul style="list-style-type: none"> ✓ Strengthen the urban rural linkages to reduce the rate of urbanization ✓ Provide services and infrastructure closer to the rural areas ✓ Enforce, harmonize and regularly review the existing legislative and regulatory instruments ✓ Plan and provide appropriate and adequate transport infrastructure and utilities ✓ Promote the development of centres as per its potential and population ✓ Promote sustainable waste management ✓ Strengthen existing land management institutions ✓ Plan, implement and enforce urban plans for the existing centres to control urban sprawl and promote urban containment.
--	---	---

4.2 NATIONAL SPATIAL PLAN POLICY GUIDELINES AND MEASURES FOR LAIKIPIA COUNTY

This section seeks to provide the spatial policy guidelines and measures aimed at promoting the achievements of the objectives of the National Spatial Plan using its guidelines. They aim at enhancing global and national competitiveness and economic efficiency, optimizing the use of land and natural resources, promoting regional balanced development and conservation of the environment.

These policies are supported by a wide range of measures which spell out the specific actions to be undertaken to actualize the policy intentions. The policies shall ensure that the County is nationally competitive as an investment destination, especially in emerging sectors such as the ICT. The policies will also be implemented by the County government's agencies responsible for planning and development control as well as the authorities responsible for land administration.

The following are the policies and measures specific to Laikipia County.

Table 4: policy guidelines and measures

	Sector	Policy Guideline	Measures
1.	<p>Framework for Development of Spatial Growth Regions</p> <p>(Region 2: Eastern, South Eastern and North Western)</p> <p>Key Urban Centres:</p>	<ul style="list-style-type: none"> • Enhanced agricultural and food production • Investment in physical and social infrastructure • Development of tourism infrastructure • Mineral mapping and exploitation • Environmental protection and Conservation 	<ul style="list-style-type: none"> • Infrastructure provision to support value addition initiatives and human settlement • Small and medium urban Centres development • Rural development through provision of infrastructure, agricultural sector development and related economic activities • Small and medium urban Centres development

<p>2.</p>	<p>Modernizing Agriculture (Agro-climatic zone V)</p>	<ul style="list-style-type: none"> • Agro climatic zones IV, V and VI (rangelands) shall be developed and used optimally for large scale commercial production of livestock to support downstream processing of livestock products and promote balanced regional development • The irrigation potential of the county shall be optimized by promoting investment in irrigation agriculture for high value crops 	<ul style="list-style-type: none"> • Prepare and implement County spatial plans • Prioritize provision of requisite infrastructure to support ranching • Modernize livestock keeping • Increase livelihood diversification, productivity and competitiveness and create an investment environment • Provide transport connectivity and adequate inter and intra-road networks as well as other social and physical infrastructure • Value addition to agricultural and livestock products. • Enhance ASAL climate change adaptation and mitigate desertification • Rehabilitate and expand existing irrigation schemes and undertake research to identify the irrigation potential in all counties
<p>3.</p>	<p>Conserving the natural environment</p>	<ul style="list-style-type: none"> • All environmentally sensitive areas shall be protected and utilized in a sustainable manner • All government agencies shall integrate environmental concerns in policy formulation, resource planning and development processes. 	<ul style="list-style-type: none"> • Prepare and implement integrated management plans for Environmental sensitive areas • Support effective implementation of related policies and laws. • Develop and implement an Integrated Land Use (Development) Plan for the ASALs.

			<ul style="list-style-type: none"> Strengthen Environmental Governance and harmonize sectoral policies, legislation and regulations.
4.	Rapidly Industrializing County	<ul style="list-style-type: none"> The cluster development strategy shall be promoted to focus on proximity to raw materials and markets of region specific products Specific sites for industrial development shall be identified, planned and serviced with the appropriate infrastructure Adequate and affordable energy supply for the industrial sector shall be provided 	<ul style="list-style-type: none"> Mineral-based and cottage industries to be located in-situ Establish infant industries in rural and rangeland areas for value addition and investments opportunities Promote value addition in processing of local produce. Plan and set aside land for industrial development Provide appropriate support and transportation infrastructure for industrial activities Integrate the industrialization process and environment conservation Increase availability of clean water and improve sanitation Provide reliable and affordable energy infrastructure by extending the national grid network Promote the adoption of energy efficient technologies

<p>5.</p>	<p>Diversifying Tourism (Central Highlands and Great Rift valley)</p>	<ul style="list-style-type: none"> • Promote diversification of tourism by offering diverse products in the different tourist circuits • Appropriate Tourism support infrastructure and facilities shall be provided • Tourist attraction areas and sites shall be conserved and protected • Governance of the tourism sector shall be enhanced. • Spatial Development plans shall be prepared to guide implementation of the flagship projects for the tourism sector 	<ul style="list-style-type: none"> • Carry out an inventory of tourism infrastructure and facilities • Formulate planning regulations and standards to guide tourist specific infrastructure and facilities. • Prepare subject plans for the wildlife migratory and dispersal corridors and wildlife habitat as a unit. • Prepare integrated spatial plans to guide development of the tourism sector. • Prepare and implement National Policies on land use, wildlife and tourism. • Facilitate access to eco-tourism development incentives • Prepare local physical development plans to actualize the Premium Parks Initiative
------------------	--	---	---

<p>6.</p>	<p>Managing Human Settlements</p>	<ul style="list-style-type: none"> • Existing urban areas shall be subjected to strict development control to curtail encroachment on high potential agricultural land • Rural growth centres shall be rationalized and supported to act as central places and settlements clustered to free the rich agricultural land • Human settlements shall be developed in line with environmental and natural resources conservation • Provision of an efficient, reliable and effective transport system for human settlements • The management and governance of Human Settlements particularly the urban areas shall be improved. • Advocate for upgrading of the existing settlements and forestalling of new informal settlements • Peri-urban development shall be managed and controlled to contain urban growth within its limits and protect rural land uses. 	<ul style="list-style-type: none"> • Prepare and implement local physical development plans to define the urban growth limits for the principal urban centres • Enforce strict regulations and justifications on development control processes. • Provide requisite infrastructure to support growth and development. • Promote sectors such as agriculture that have potential to stimulate rural development • Incorporate disaster management and mitigation in planning of rural settlements. • Plan and provide an integrated waste management system. • Build institutional capacities of the urban areas management boards
------------------	--	---	--

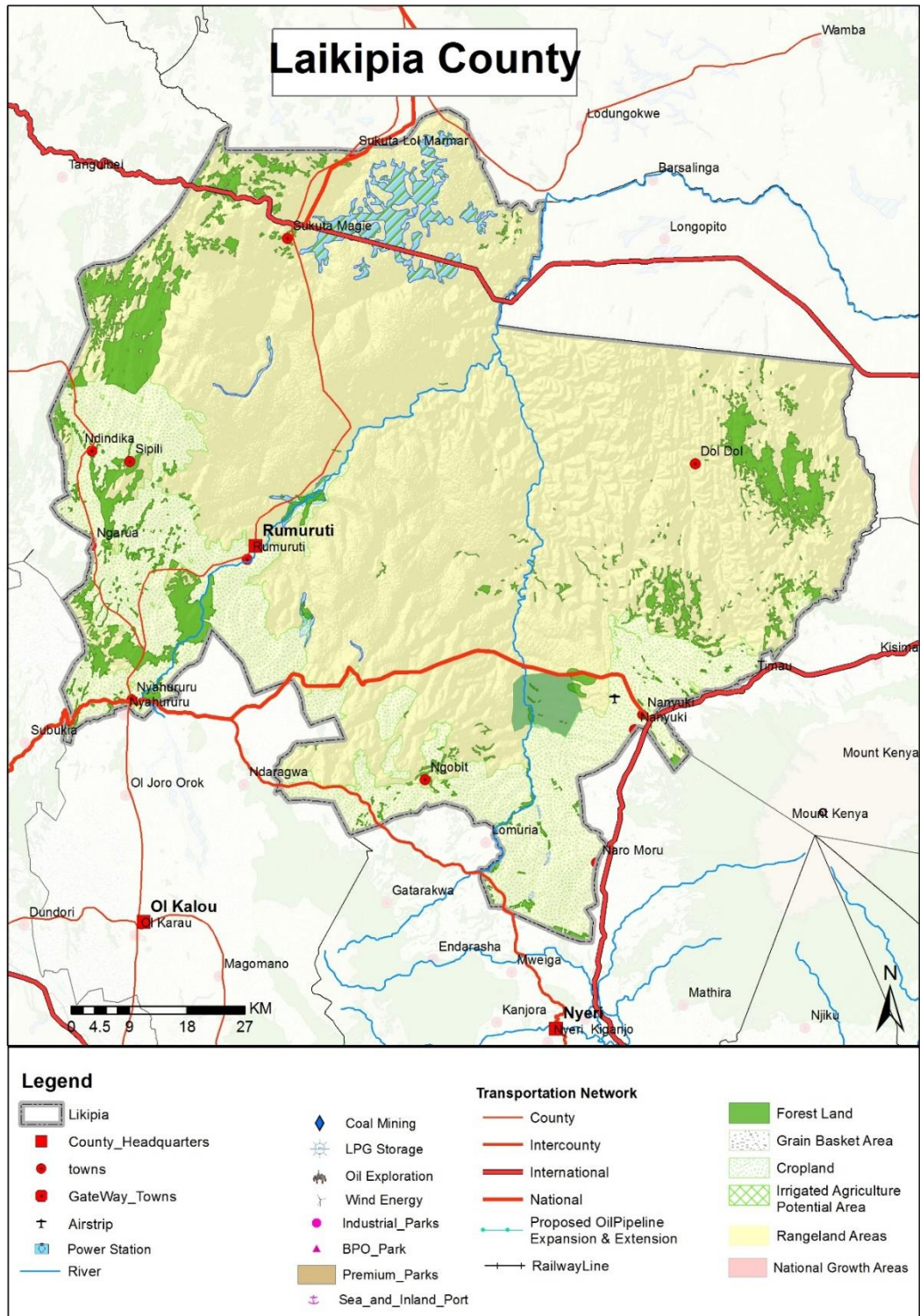
<p>7.</p>	<p>Integrating the Transportation network</p>	<ul style="list-style-type: none"> • An integrated and functional transport system for the county and urban areas shall be developed • An urban transport policy that facilitates an integrated, balanced and environmentally sound urban transport system in which all modes efficiently play their roles shall be developed • Environmental conservation shall be upheld in the planning, development and management of the transportation network • An efficient and affordable Mass Public Transport for all urban areas in the country shall be developed 	<ul style="list-style-type: none"> • Provide access and linkage, between county headquarter and sub-county headquarters and link them to national transportation corridors • Adopt transit-oriented development in the planning, design and development of all public urban transport • Integrate land use with urban transport planning • Design and develop integrated transport networks that considers all different modes of transport • Establish a comprehensive transport management information system for all transport modes • Develop a public transport policy to regulate planning and management of public transport
------------------	--	--	---

DRAFT

	<p>8. Providing Appropriate Infrastructure</p>	<ul style="list-style-type: none"> • Safe, adequate, reliable and affordable electricity for both urban and rural settlements shall be provided. • Expansion and improvement of water reticulation systems to facilitate the access to clean, safe, adequate, reliable and affordable water in human settlements shall be promoted. • Appropriate, quality, efficient and cost-effective ICT infrastructure in both rural and urban areas shall be promoted • The expansion of sewerage systems and waste management facilities shall be promoted to improve sanitation in human settlements • Sporting infrastructure shall be planned, developed, maintained and the existing rehabilitated to promote sports development. 	<ul style="list-style-type: none"> • Increase access to electricity through upgrading and expansion of the county power transmission and distribution network. • Tap into solar for large scale production in Laikipia County for sale to the national grid. • Mainstream and enforce green energy options in the design of buildings • Incorporate water provision in all physical development plans • Restore all the water towers. • Improve the system's ability to transfer clients and specimens between the various levels of the health care system. • Extend ICT infrastructure to cover all the rural and local growth centres. • Mainstream use of ICT in all levels of government and the private sector (e-government). • Establish County Sports Talent Centers to act as feeds to the international center to scout, nurture and develop sports talents at the sub-national levels.
--	---	---	---

Map 3 provides a spatial representation of the policies proposed for Laikipia County.

Map 3: NSP Proposal for Laikipia County



Source: Department of physical planning, 2022

5 CHAPTER 5: IMPLEMENTATION AND ADOPTION OF THE GUIDELINES

5.1 Overview

The implementation framework identifies activities and further ties them with responsible actors, resources and timeframes adequate for their execution. It constitutes a deliberately established method, means or system of ensuring that the policies, strategies and measures outlined in the guidelines are continuously and consistently executed to achieve their objectives.

To effectively implement the guidelines, the various sectors, actors and levels of planning have been identified and have to work together and the mandate of the sectors at the National and County levels of planning have to be integrated.

5.2 Implementation Approaches

The County Specific Guidelines will be implemented through various approaches including:

1. Preparation of spatial plans to integrate and conform to the proposals of the County Guidelines. The plans include:
 - Inter-County Physical and Land Use Development Plans for Metropolitan regions, conservation zones, river basins, water towers, coastal ecosystems, trans-boundary resource areas and transport corridors, among others.
 - County Physical and Land Use Development Plans.
 - Local Physical and Land Use Development plans for Cities, Urban areas, special area plans, subject plans and detailed neighbourhood plans, among others.
 - Sectoral plans
2. Integration of the guideline policies, strategies and measures into the County sector plans, programs and projects. Ministries, Departments and Agencies (MDAs), County and National Departments identified in the plan to administer the

- policies, strategies and measures are required to translate them into action plans, programmes and projects and to include them in their subsequent sector plans.
3. Formulation of policies, regulations and standards to guide development control

5.3 Implementation Framework

The implementation of the various policies, strategies, measures, programmes and projects under these Guidelines will involve a wide range of actors. It will require a coordinated approach and partnership between the National and County Governments and non-state actors. It may require re-engineering of institutions and a number of actors to undertake the implementation through a harmonized approach.

The National Spatial Plan identified a multi-levelled framework for implementation of the plan that incorporates all levels of actors. In this regard, the institutions identified in the NSP to undertake implementation of the plan at County-level shall also be mandated to ensure implementation of this Guidelines.

The following are the Institutions mandated to ensure implementation of the County Specific guidelines;

5.3.1 County Physical Planning Committee

The role of the County Planning Committee shall be to ensure aspirations of the guidelines are articulated in preparation of the County Spatial Plans, County Integrated Development Plans and Local Physical and Land Use Development Plans.

The composition of this committee consists of;

- i. The Governor who will be the Chairperson,
- ii. the Deputy Governor,
- iii. the County Executive Committee Members from various sectors
- iv. Directors from various relevant County Departments including Lands and Physical Planning, Economic planning, Agriculture, Industrialization, Tourism, Environment, Transport and Infrastructure

The functions of the committee include;

- 1) To promote effective integration between physical, economic and sectoral planning within the framework of county development policies.
- 2) To provide policy guidance for the implementation of strategic spatial projects
- 3) To ensure that the guidelines policies and measures are mainstreamed in the various county plans.
- 4) To mobilize resource for implementation of the Guidelines.

5.3.2 County Planning Unit (CPU)

The technical Unit shall provide technical support to the various implementing County departments on issues relating to physical planning.

The CPU shall;

- i. Monitor the Implementation of the guidelines.
- ii. To disseminate components of the guidelines to the various county departments.
- iii. Update the County Physical Planning Committee on a regular basis on the implementation of the guidelines.

The County Director of Physical Planning shall be responsible for preparation of an annual state of planning report which shall among other things appraise the status of implementation of the guidelines.

5.3.3 National Land Commission

The National Land Commission shall play its oversight role in land use planning to ensure efficient implementation of the NSP and the guidelines. Other functions of the Commission in the implementation of the NSP and the guidelines include the following:

- To formulate mechanisms and parameters for monitoring and overseeing land use planning.

- i. To ensure that relevant planning authorities carry out their functions as required by law.
- ii. To make recommendations for improvements of the planning systems in the county.
- iii. To mobilize resources to support physical/land use planning.

5.4 Monitoring and Evaluation

Implementation of the guidelines will be monitored and evaluated to measure both outputs and outcomes and ensure that the intended actions are implemented in a timely manner. To facilitate attainment of the objectives of the guidelines, performance indicators will be developed by the County Physical Planning Department for efficient monitoring. Periodic reports will be prepared in relation to progress being made in their implementation.

The graphic below illustrates the implementation structure for County Specific guidelines.

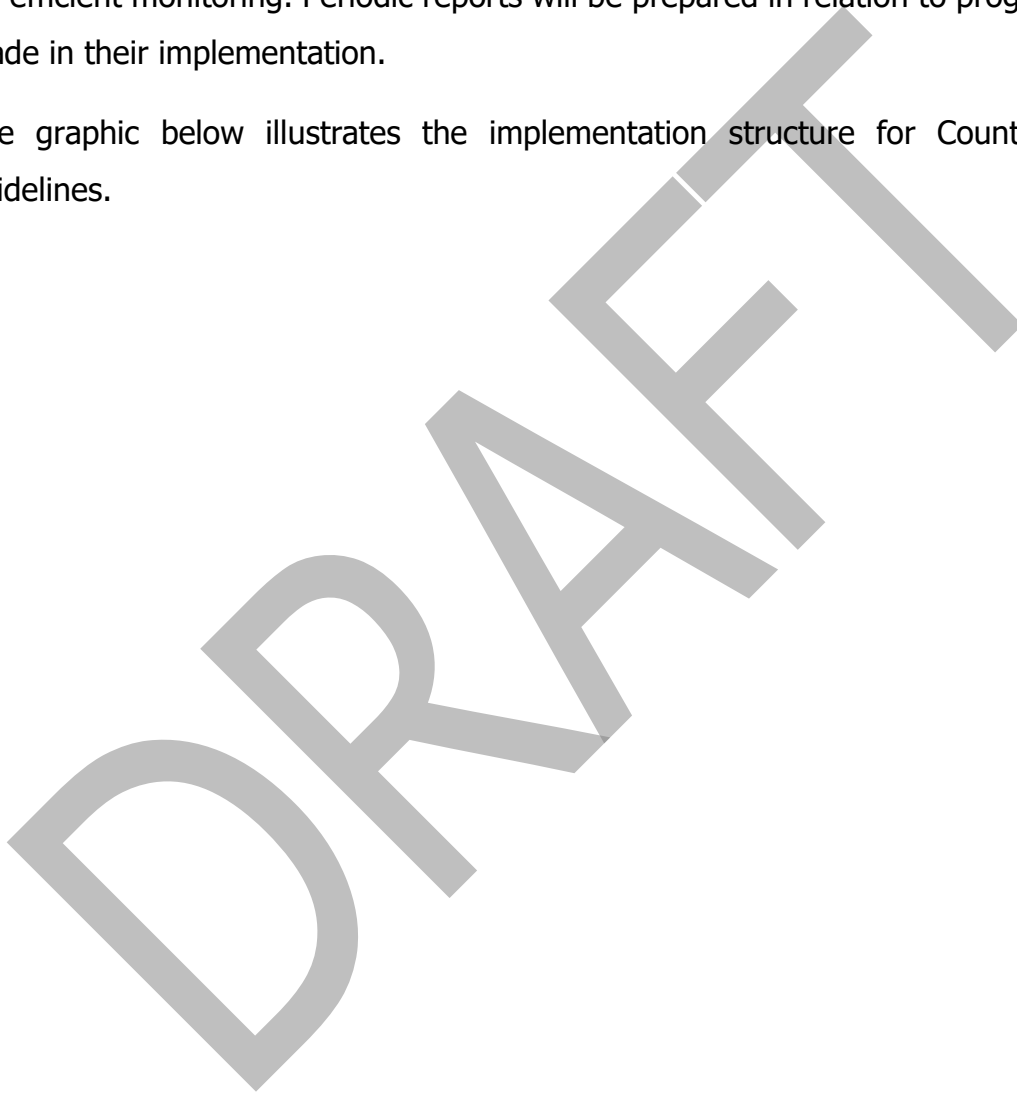
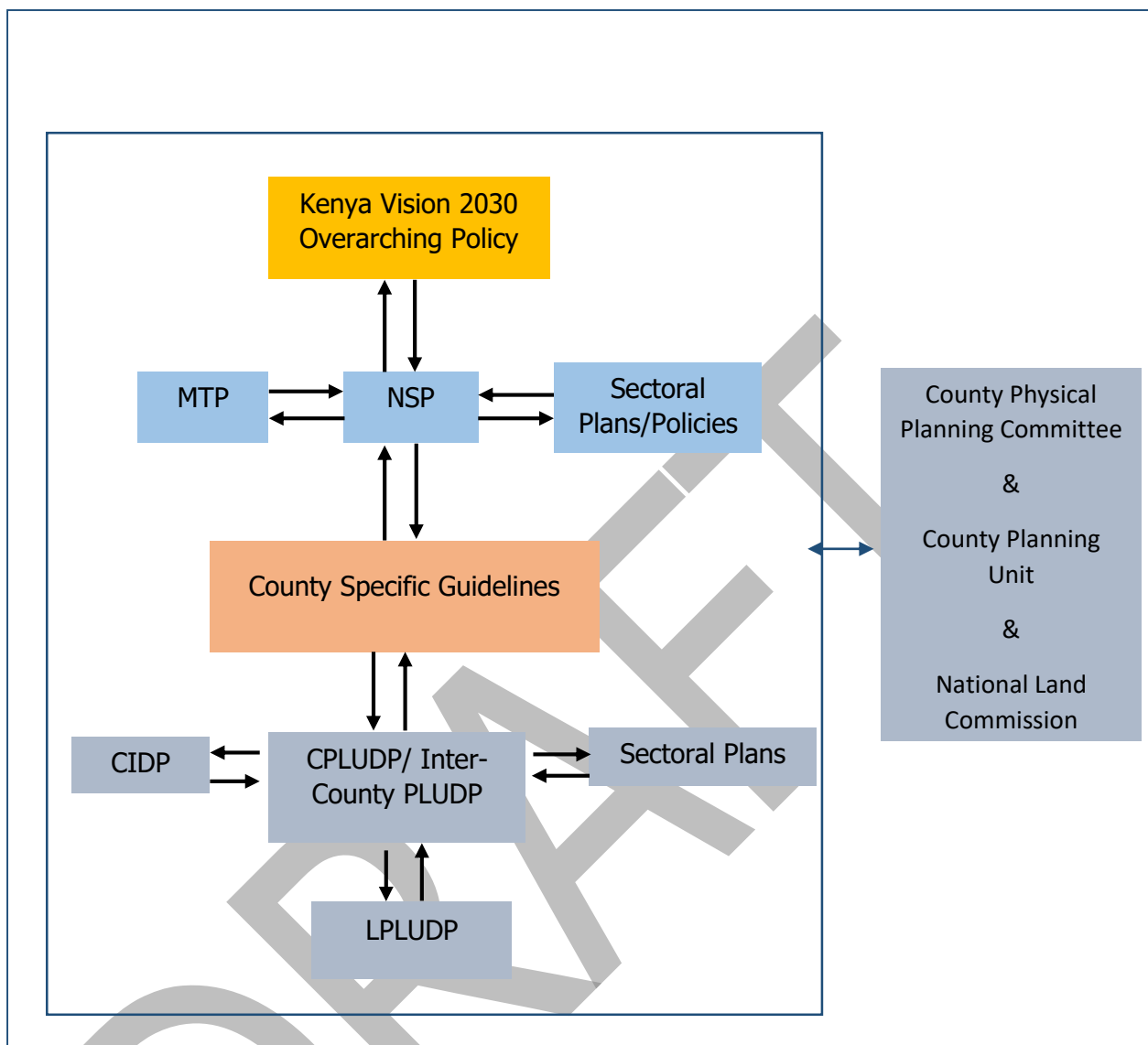


Figure 4: Implementation structure of the guidelines



Source: State Department for Physical Planning, 2022

5.5 Conclusion

The application of these guidelines will be undertaken by a multiplicity of actors and hence the need for a coordinated approach. The lead agency will be the 47 county governments which will be responsible for implementing various county specific initiatives proposed by the NSP within their territory. The County Physical Planning Committees shall strive to ensure that the aspirations of the NSP are articulated in preparation of their lower level land use and physical development plans. Synergies between national, county governments, the private sector, interest groups and the general public will be critical in actualizing the objectives of these guidelines. The County Executive Committee Member responsible for physical and land use planning shall develop a communication strategy to enhance the synergies.

The County Directors of Physical Planning shall be required to prepare annual state of planning report which shall among other things appraise progress of the practicability/workability of the guidelines in the implementation of the county specific provisions of the NSP and give appropriate proposals on the need if any of recasting the guidelines to match any emerging realities therein.

The National Department of Physical Planning shall undertake sensitization, training and build capacity of counties and institutions that will be involved in the implementation of these guidelines. Special attention will be given to the physical planning units within the county governments as they will be expected to provide technical expertise in the implementation of the county specific NSP policies and strategies. Periodic reviews of the NSP that may be occasioned by uncertainties and unforeseen circumstances shall be communicated to all the counties which in turn shall inform recrafting of the guidelines.

The National Land Commission shall take cognizance of these guidelines as a planning tool when carrying out its oversight role in land use planning to ensure efficient implementation of the NSP at the county levels.