



Lamu County Government
For People & Progress



NATIONAL SPATIAL PLAN IMPLEMENTATION GUIDELINES FOR LAMU COUNTY

**Optimal Productivity, Sustainability, Efficiency and Equity in the use of our
Land and Territorial Space**



**MINISTRY OF LANDS AND PHYSICAL PLANNING
STATE DEPARTMENT FOR PHYSICAL PLANNING
© 2022**

Kenya 
VISION 2030

FOREWORD

The Constitution of Kenya apportions responsibility of planning to both National and County Governments. Under the Fourth Schedule on distribution of functions, Part 1 (21) and (32) mandates the National Government with the responsibility of formulating general principles of land planning, co-ordination of planning by the Counties, capacity building and technical assistance to the Counties. On the other hand, Part 2(8) allocates the function of County planning and development to County Governments. It is under these provisions that the County specific guidelines have been prepared.

The Department of Physical Planning prepared the National Spatial Plan (NSP) in response to the Kenya Vision 2030 to guide the spatial development of the country over a period of 30 years beginning in 2015.

It aims at achieving an organized, integrated, sustainable and balanced development of the country by providing a framework for better national organization and linkages between different activities within the national space.

To implement the Plan, the Counties are expected to play a key role by mainstreaming strategies, policies, and measures identified in the NSP into the County spatial planning systems.

The guidelines have identified planning policies, strategies, and measures that Plans at the County level are expected to mainstream and propagate. The policies address among others, the protection of rich agricultural land, development imbalances, conservation of environmentally sensitive areas, urban containment, and promotion of industrial development.

The guidelines provide direction on the existing potentials, the opportunities, the constraints/challenges inhibiting harnessing of the potentials, the strategies to apply, respective policies required, and the necessary measures to achieve optimal productivity, sustainability, efficiency and equity in the use of county land resources.

The guidelines are an opportunity on how best to refocus, vary and complement areas that require different approaches responding to country-specific needs and promote the livelihoods of their people, while contributing to the national aspirations of vision 2030, regional objectives of the Africa Agenda 2063, and international targets of sustainable

development. The refocusing will also be handy in reviewing and making decisions on NSP which is due for review in 2025.

These guidelines are therefore a tool for enhancing this critical path and provide a direction for development planning by the Counties as they discharge their responsibility of preparing county and local physical and land use development plans. The guidelines will also ensure that the County Integrated Development Plans conform to the proposed County specific policy guidelines and measures.

DRAFT

PREFACE

The National Spatial Plan (NSP) recognizes that Kenya is greatly endowed with massive and diverse resources distributed over the national space that require an integrated and coordinated approach for optimal productivity and sustainability.

The County Specific Guidelines have been derived from the National Spatial Plan and provide a planning framework for the integration of the NSP into the county spatial planning system. They are clear statements linking the National Spatial Plan to Inter-County, County and lower-level Physical and Land Use Development Plans and provide clarification on the anticipated sustainable development outcomes of implementing the Plan.

The County Government will adopt, develop and implement their plans based on the policies, strategies, and measures articulated in the guidelines. The realized county plans are expected to guide, harmonize and facilitate development within the county, hence contributing to the overall implementation of the NSP.

The guidelines also form an efficient compass and monitoring tool for National and County Governments to jointly pursue sustainable planning and appropriate implementation mechanisms.

For the county to be nationally competitive, there is need to balance development and promote optimal utilization of land and land-based resources as well as cultivate an integrated approach in addressing the intertwined challenges of regional imbalances/inequalities, rural development, underutilization of the available resources, uncontrolled urbanization, environmental degradation and inefficient transportation. It is imperative therefore, to prioritize the implementation of this strategic document so as to promote balanced development and competitiveness across the County

EXECUTIVE SUMMARY

The County Specific Guidelines seek to facilitate the implementation of the National Spatial Plan by outlining policies, strategies and measures to guide County spatial planning and development and promote optimal productivity, sustainability, efficiency and equity in the use of land. They provide a framework for preparation of lower level Plans including Inter-County, County and Local Physical and Land Use Development Plans.

The disconnect between National and County Spatial Planning and development has resulted in uncoordinated and unbalanced development, therefore creating a need for a clear structure that links National, Regional and Local planning and development. This is achievable through integration of the policies, strategies and measures proposed by the guidelines into County Spatial Plans, Programs and Projects, to tackle challenges of unbalanced regional development, urbanization, national competitiveness and unsustainable use of land and natural resources.

The County Specific Guidelines are organized into five chapters detailing various facets. Chapter one provides an overview, purpose and justification of preparation of the guidelines. It also outlines the objectives that the guidelines intend to achieve and details the preparation process as well as intended users. This chapter highlights the key principles that form the basis for preparation of lower level plans including public participation, liveability, sustainable development, urban containment, smart urban growth among others.

Chapter two details the legal and policy provisions that the guidelines are anchored upon. They include, among others, The Constitution of Kenya, 2010, The Physical and Land Use Planning Act No.13 of 2019, County Government Act, 2012, Environmental Management and Coordination (Amendment) Act, 2015, Sessional Paper No. 01 of 2017 on National Land Use Policy and Sessional Paper No. 10 of 2012 on Kenya Vision 2030.

The third chapter analyses the county profile, detailing its location, size, bio-physical characteristics, socioeconomic status and the County's comparative advantage in relation to others. The locational context provides information on the geographical position and bordering Counties while the biophysical context discusses the topography, hydrology and climate. The socioeconomic status indicates key economic drivers of the County and its population and demographic structure.

Chapter four presents the County specific issues and proposes development strategies to promote national competitiveness, optimal use of land and resources, rural development, balanced intra-county development and urbanization. Additionally, it provides policy guidelines and measures for County advancement.

The final chapter five focuses on implementation and adoption of the guidelines. The implementation framework identifies institutions, County development programs and projects, and further ties them with responsible actors, resources and timeframes for effective execution. It proposes a framework for ensuring that the outlined policies, strategies and measures are adequately implemented.

DRAFT

Table of Contents

FOREWORD	ii
PREFACE.....	iv
EXECUTIVE SUMMARY	v
1 CHAPTER ONE: INTRODUCTION	9
1.1 Background.....	9
1.2 Purpose	9
1.3.....	9
Objectives	9
1.4 Scope	10
1.5 Justification.....	11
1.6 Application of the Guidelines.....	11
1.7 The Process of Preparing the Guidelines	11
1.8 Targeted Users.....	12
1.9 Key Principles.....	13
2 CHAPTER TWO: THE POLICY, LEGAL AND PLANNING FRAMEWORK OF THE GUIDELINES	15
2.1 Constitutional Context	15
2.2.....	15
Policy Context	15
2.3 Legal Context.....	16
2.4 The Planning Context.....	17
3 CHAPTER THREE: COUNTY PROFILE	20
3.1 Overview	20
3.2 Location Context.....	20
3.3.....	21
Bio-Physical Context	21
3.4 Socio-Economic Background	22
3.5 County's Comparative Advantage	25
4 CHAPTER FOUR: DEVELOPMENT STRATEGIES AND POLICY GUIDELINES FOR LAMU COUNTY 26	
4.1 County Specific Issues and Development Strategies.....	26
4.2 The National Spatial Plan Policy Guidelines and Measures for Lamu County	32
5 IMPLEMENTATION AND ADOPTION OF THE GUIDELINES	49
5.1 Overview	49
5.2.....	49
Implementation Channels	49
5.3 Implementation Framework.....	49

5.4 Monitoring and Evaluation	51
5.5 Conclusion	53

DRAFT

1 CHAPTER ONE: INTRODUCTION

1.1 Background

The County Guidelines set out policies, strategies and measures that will guide the long-term spatial development of the county for a period of 30 years. They cover the entire county and defines the general trend and direction of its spatial development.

The guidelines have been developed in line with the four thematic areas as outlined in the NSP. They provide a guide to the Planning Authority at the county on how to incorporate the NSP policies, strategies and measures during the preparation of County Spatial Plans and other lower-level plans like the Local Physical and Land Use Development Plans consequently implementing the NSP.

The NSP County Specific implementation guidelines summarize the County's existing potentials and opportunities, the constraints (challenges) inhibiting harnessing of the potentials, the applicable strategies and respective policies required, and the necessary measures to achieve optimal productivity, sustainability, efficiency and equity in the use of the county land resources. They act as a reference point.

1.2 Purpose

The purpose of the County Specific Guidelines is to provide a planning framework for mainstreaming of the National Spatial Plan to the County spatial planning system.

The guidelines are intended to assist the County enhance the implementation of the NSP by linking the proposed county specific policies, strategies and measures into the County plans, programs and projects while putting measures in place for achieving them. The guidelines inform preparation of various County Physical Plans such as the County Physical and Land Use Development Plans.

For optimal implementation of these plans, a County Integrated Development Plan (CIDP) is essential since it is a sectoral and budgetary based plan that draws its implementation programs and projects from the County Physical Plans.

1.3 Objectives

The guidelines provide policies and strategies to deal with challenges of regional imbalances/inequalities, rural development, underutilization of the available resources,

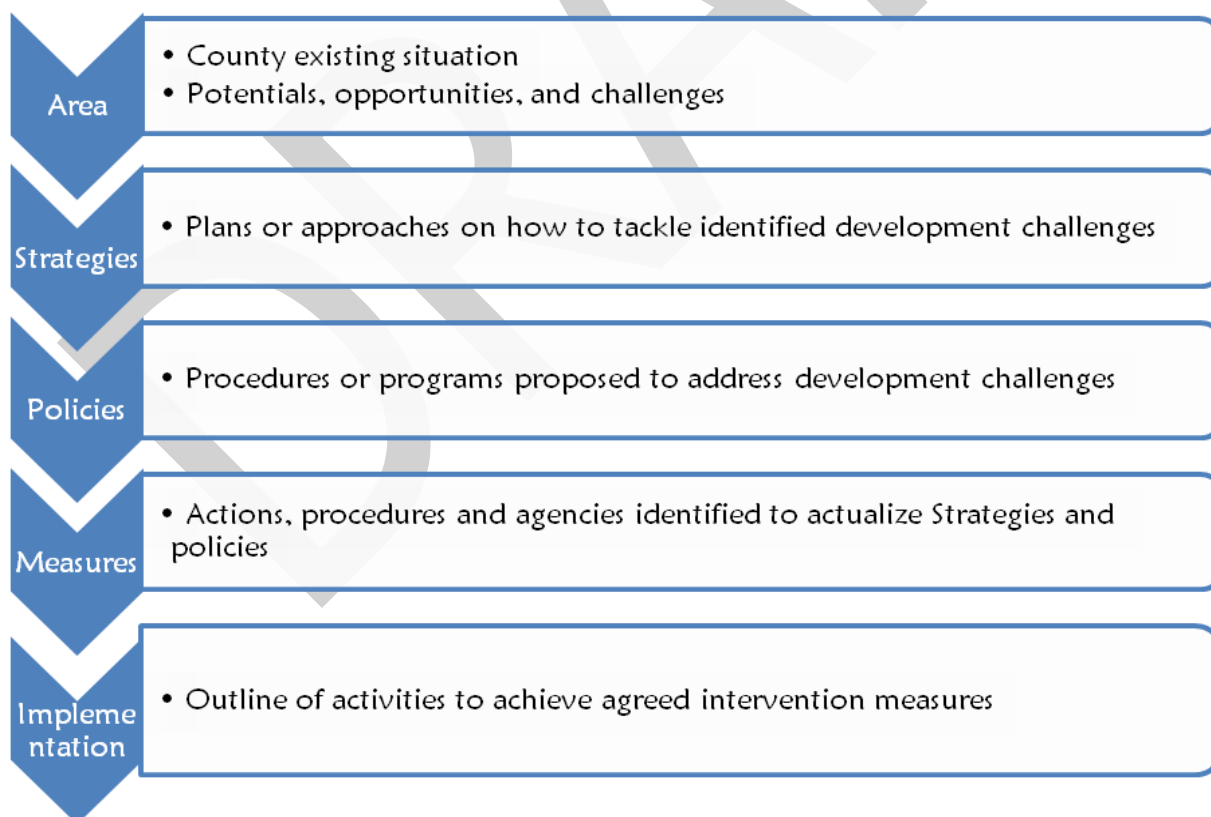
urbanization, environmental degradation and inefficient transportation. Specific objectives of these guidelines are;

1. To sensitize the County on the provisions of the NSP
2. To promote synergy between National and County Planning
3. To guide the County in the implementation of the NSP
4. To clarify the roles of the different actors in the implementation of the NSP

1.4 Scope

The guidelines and strategies are specific to Lamu County and cover the entire territory of the County measuring approximately 6,253 Km². The guideline highlights key facets which include identified challenges, actions, approaches, plans and procedures prescribed to address the challenges, and outline of activities to execute agreed interventions as captured in the National Spatial Plan as indicated in figure 1 below. This guideline shall be operational until the year 2045.

Figure 1: The Scope of the Guidelines



Source: State Department for Physical Planning, 2022

1.5 Justification

Since the approval and launch of the NSP, its implementation has been undertaken in an uncoordinated manner hence the guidelines will provide a standardized approach for all Counties. The guidelines are also an important tool for tracking and evaluating implementation of the NSP both at National and County levels.

The preparation of County Spatial Plans and other lower-level plans which is a mandate of the Counties has been slow and, in some Counties, has not begun at all. These guidelines are therefore a quick reference in preparation of county plans and for some Counties to help optimize land in the absence of these plans.

1.6 Application of the Guidelines

The guidelines and strategies will be used or applied in the following ways to achieve a more sustained and coordinated development of the County;

1. To effectively coordinate planning between the National and the County Government;
2. To improve County Government capacity to formulate, coordinate and implement integrated development policies and programs to address spatially unbalanced development;
3. To inform strategic infrastructure policy and public investment decisions which support the achievement of balanced development in the County;
4. To strengthen County inter-sectoral coordination within a spatial framework and provide the private sector with a clear context in which they can make investment decisions;
5. To optimize the use of land and natural resources by providing a framework for making sustainable locational choices for sustainable development and conservation of land productivity in the County.

1.7 The Process of Preparing the Guidelines

The process involved reviewing the National Spatial Plan and identifying key issues, spatial policies, development strategies and measures specific to Lamu County. These key issues, spatial policies, development strategies and measures will be realized through preparation of County and other lower-level plans.

Research was undertaken on various thematic areas to enrich the County specific issues and development strategies as well as policy guidelines and measures/ interventions. Further, preparation of the guidelines considered the constitutional, policy and legal provisions on physical and land use planning. Expert opinion was sought on the identified issues, policies, measures and strategies for implementation viability. The preparation of the guidelines was identified as one of the implementation tools of the NSP, in which key NSP issues, policies, strategies and measures were translated into specific action plans, programs and projects at the County level.

1.8 Targeted Users

Table 1 below indicates the targeted users of this guideline and the appliance for each among other uses.

Table 1: Target Users of the Guidelines

User	Application
The County Executive Committee Member (CECM) in charge of Physical and Land Use Planning	<ul style="list-style-type: none"> ▪ Preparation of County and Lower Level Plans ▪ Linkage of Planning Structures ▪ Quality control of the various County Plans ▪ Formulation of County Planning Policies and Strategies ▪ Establishment of the County Planning Institutions ▪ Coordination and Implement of the County Plans and Policies
The County Director of Physical and Land Use Planning	<ul style="list-style-type: none"> ▪ Advising the County Government on the impact of the County Specific Guidelines to the County ▪ Preparation of County Physical and Land Use Development Plans and other lower level plans ▪ Formulating County Physical and Land Use Planning Policies, Guidelines, Strategies and Standards ▪ Issuance of development permission and other development control instruments under The Physical and Land Use Planning Act, 2013
Licensed Physical And Land Use Planners both in public and private sectors	<ul style="list-style-type: none"> ▪ Prepare, coordinate and implement Spatial Plans ▪ Quality control of plans and consultancy services ▪ Formulation of policies, strategies and development guidelines ▪ Dispute resolution within the County
The County Assembly	<ul style="list-style-type: none"> ▪ Approval of planning budgets ▪ Vetting of various County Plans ▪ Formulation and passing of County Planning legislation ▪ Enhance capacity to oversee the executive on spatial planning
Ministries, Departments	<ul style="list-style-type: none"> ▪ Development of relevant policies, strategies, standards, guidelines, programmes, and projects

and Agencies (MDAs)	<ul style="list-style-type: none"> ▪ Understand processes, procedures and linkages in spatial planning requirements
The National Land Commission (NLC)	<ul style="list-style-type: none"> ▪ Oversight role in land use planning to ensure efficient implementation of the NSP ▪ Ensure relevant planning authorities carry out their functions as required by law
Practitioners in the built environment	<ul style="list-style-type: none"> ▪ Advance of relevant policies, strategies, standards, guidelines, programmes, and projects ▪ Apply processes, procedures and linkages of the NSP in their respective areas of practice
Community, Developers and Investors	<ul style="list-style-type: none"> ▪ Comprehend the processes, procedures and requirements of various County Plans and Policies ▪ Linkages of spatial planning and implementation ▪ Informed investment decisions
Development Partners	<ul style="list-style-type: none"> ▪ Reference frame for funding spatial planning activities ▪ Understand planning linkages and implementation ▪ Informed development decisions
Training Institutions	<ul style="list-style-type: none"> ▪ Compliment the curriculum for training of Spatial Planners ▪ Understand the planning procedures and processes

1.9 Key Principles

The following principles as indicated in the NSP shall guide and form the basis upon which the lower level spatial plans shall be prepared; -

1. **Effective Public Participation/Engagement:** All plans shall be prepared in a participatory and consultative manner with relevant stakeholders and sectoral actors
2. **Urban Containment/Compact Cities:** Local plans shall strive to limit and control urban growth within the set urban boundaries to protect rich agricultural land, mitigate urban sprawl and reduce cost of infrastructural provision
3. **Livability:** The planning of urban areas shall enhance the livability index in the area of housing, environment, transportation, health, and social engagement. The urban areas must be economically viable, socially inclusive and ecologically sustainable
4. **Smart and Green Urban Growth:** Plans shall promote sustainable use of energy, creation of green spaces, reduce the need for car travel, and promote use

of local materials, support businesses, protection of heritage and creation of unique character

5. **Sustainable Development:** Balancing social, economic and environmental dimensions of development and catering for current and future generations
6. **Promotion of Ecological Integrity:** Plans shall promote the protection and conservation of environmentally sensitive areas
7. **Promote Public Transportation:** Favor public transportation over private transport to ensure efficiency and functionality of urban places
8. **Balanced development:** Plans to ensure there/ is balanced development in the County to cure inequalities.

DRAFT

2 CHAPTER TWO: THE POLICY, LEGAL AND PLANNING FRAMEWORK OF THE GUIDELINES

2.1 Constitutional Context

The formulation of these guidelines took into account the Constitution of Kenya 2010 aspirations and Principles. Article 66 of the Constitution of Kenya 2010 gives the State powers to regulate use of any land and property in the interest of land use planning among others. The Fourth Schedule of the Constitution assigns the National Government the role of capacity building and technical assistance to the Counties. The guidelines are therefore within and in response to the aspirations, values and principles as provided for in the constitution.

2.2 Policy Context

2.2.1 The Sessional Paper No. 10 of 2012 on Kenya Vision 2030

Kenya Vision 2030 is the overarching national development framework which all plans should be aligned to. The preparation of all spatial plans should take cognizance of the aspirations, foundations and development concepts of the vision. The preparation of the first National Spatial Plan is identified in Kenya Vision 2030 as a flagship project and is regarded as one of the foundations for socio-economic transformation. Hence the need for linkage between National planning and County planning which can be achieved through mainstreaming NSPs into County Spatial Plans (CSPs) and other lower level plans by preparing NSP County Specific Guidelines to implement the NSP at lower levels

2.2.2 Sessional Paper No. 1 of 2017 on the National Land Use Policy

The policy was formulated to address the various challenges related to land use and ensure efficient, productive and sustainable use of land. The main goal of the Policy is to provide legal, administrative, institutional and technological framework for optimal utilization and productivity of land related resources in a sustainable and desirable manner at National, County and Community levels

The policy recommends the preparation of a National Spatial Plan to provide an integrated framework for the development of the country including guidelines for sustainable rural and urban planning management. The policy also provides for the preparation of planning guidelines, policies and standards to be observed by County Governments and other sectoral agencies within the frameworks of approved physical and land use development

plans. These guidelines have been prepared on this basis and they are to be observed by counties in the implementation of the National Spatial Plan.

2.3 Legal Context

Various Acts of Parliament are in place to provide the legal framework for the implementation of the mandate provided for in Article 66 of the Constitution. The Physical and Land Use Planning Act, 2019, The Urban Areas and Cities (Amendment) Act, 2019, County Governments Act No. 17 of 2012, The Land Act No. 6 of 2012, National Land Commission Act No. 5 of 2012 among others. The NSP County specific guidelines are prepared in this context and meet this criterion.

2.3.1 The Physical and Land Use Planning Act, 2019

This is the overarching statute that provides for formulation of both National and County Physical and Land Use planning policies, guidelines and standards. The Act further provides for administration, types, content, process and approval of the various types of Physical and Land Use Development Plans

2.3.2 The County Governments Act, 2012

This statute mandates County Governments to carry out the planning function at the County level. The guidelines enhance the capacity to prepare the various County level plans that meet the recommended quality and standards

2.3.3 Urban Areas and Cities (Amendment) Act, 2019

The statute provides for classification of urban areas and cities, their governance and management, and for integrated development planning. The guidelines are a basis for preparation of these lower-level plans

2.3.4 Environmental Management and Coordination (Amendment) Act, 2015

The Act provides for the establishment of an appropriate legal and institutional framework for the management of the environment as well as guidelines relating to environmental management and prevention or abatement of environmental degradation. The guidelines take cognizance of this Act and will be implemented within its framework

2.3.5 National Land Commission Act, 2012

It gives the National Land Commission the management and administration of public land on behalf of the National and County Government, and to monitor and oversight land use planning in the country. The guidelines fall within the ambit of this statute and will facilitate their oversight responsibilities.

2.4 The Planning Context

2.4.1 The National Spatial Plan (NSP)

The National Spatial Plan (NSP) covers the whole country encompassing the forty-seven (47) Counties and the Exclusive Economic Zone. The NSP outlines policies and strategies as indicated in Figure 2 below, geared towards influencing desired future distribution and organization of population and activities outlined in Vision 2030 and Sectoral Policies and Plans. It aims at achieving economic efficiency and balanced development. The various County Spatial Plans should be aligned to the policies outlined in the NSP and as demonstrated in Figure 2 below.

Figure 2: Policy Focus of the NSP



Source: The National Spatial Plan, 2015

To actualize the NSP a comprehensive implementation strategy has been proposed that embraces a multiplicity of actors including National Government Ministries, Departments and Agencies (MDAs), County Governments and the National Land Commission. The strategy proposes the establishment of the following institutions as key in the implementation of the Plan; The National Physical Planning Council, the National Technical Committee and the County Physical Planning Committee

2.4.2 NSP linkage to other Plans

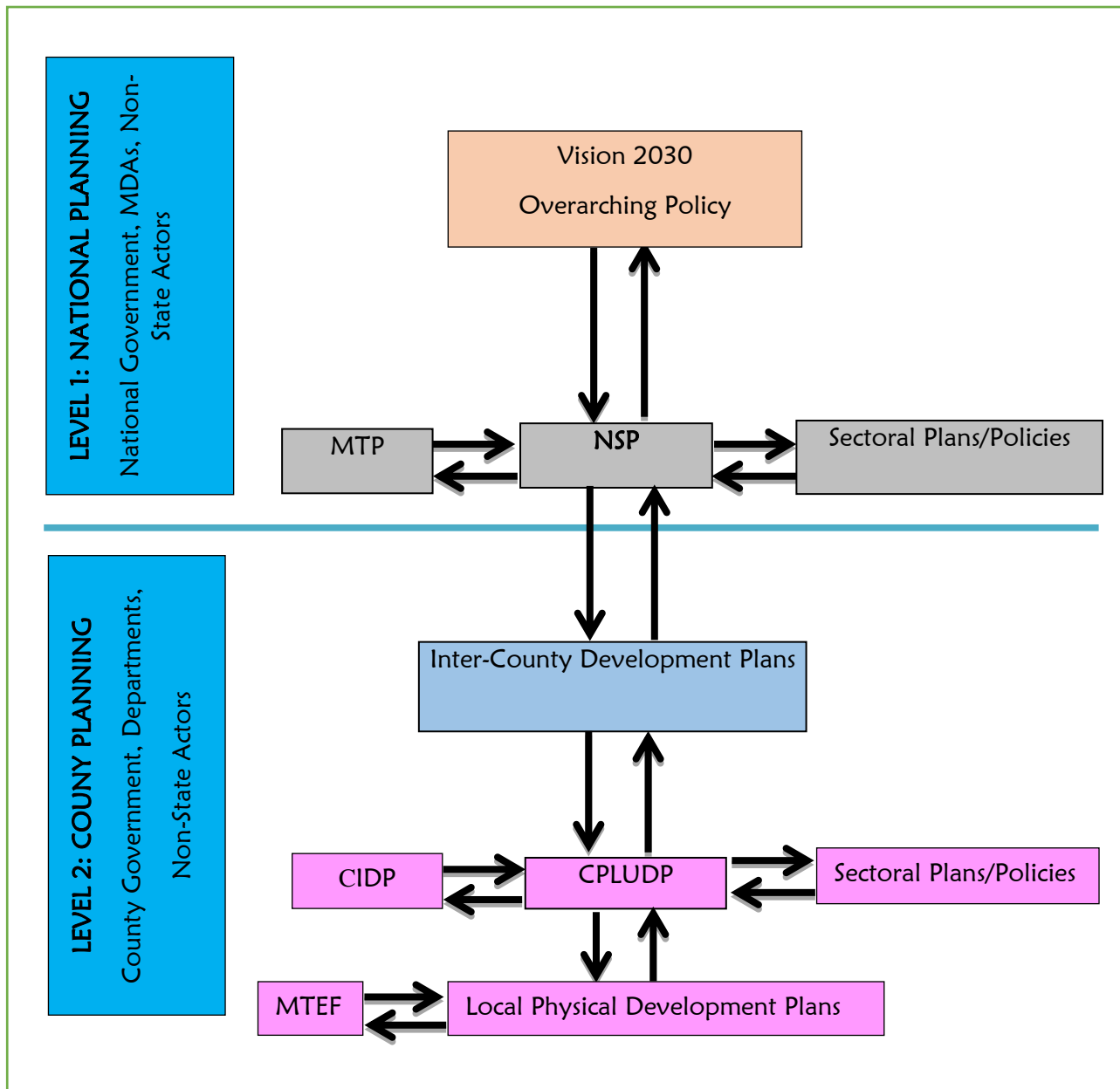
The linkage of the National Spatial Plan (NSP) to county and other lower-level plans is key to realization of its aspirations and the successful actualization of these plans. The NSP provides a spatial framework to ground the Vision 2030 flagships projects and form a basis for coordination of County policies, strategies, measures and plans.

Inter County and County plans take into considerations the policies, measures and strategies of the NSP and implements them actualizing its aspirations.

County Physical and Land Use Development Plans provide a framework where the CIDP draws its programs and projects. The implementation of the CIDP in turn leads to realization of the objectives of the County Physical and Land Use Development Plan.

Figure 3 below illustrates the Country's planning linkage.

Figure 3: Linkage of the National Spatial Plan to Other Plans



Source: The National Spatial Plan, 2015

3 CHAPTER THREE: COUNTY PROFILE

3.1 Overview

This chapter presents the locational, bio-physical and socio-economic perspectives and trends of the County that informed the preparation of the strategies, policies and measures that form the National Spatial Plan County-Specific Guidelines for Lamu County. It looks at the comparative advantage of Lamu County as compared to the other Counties in Kenya.

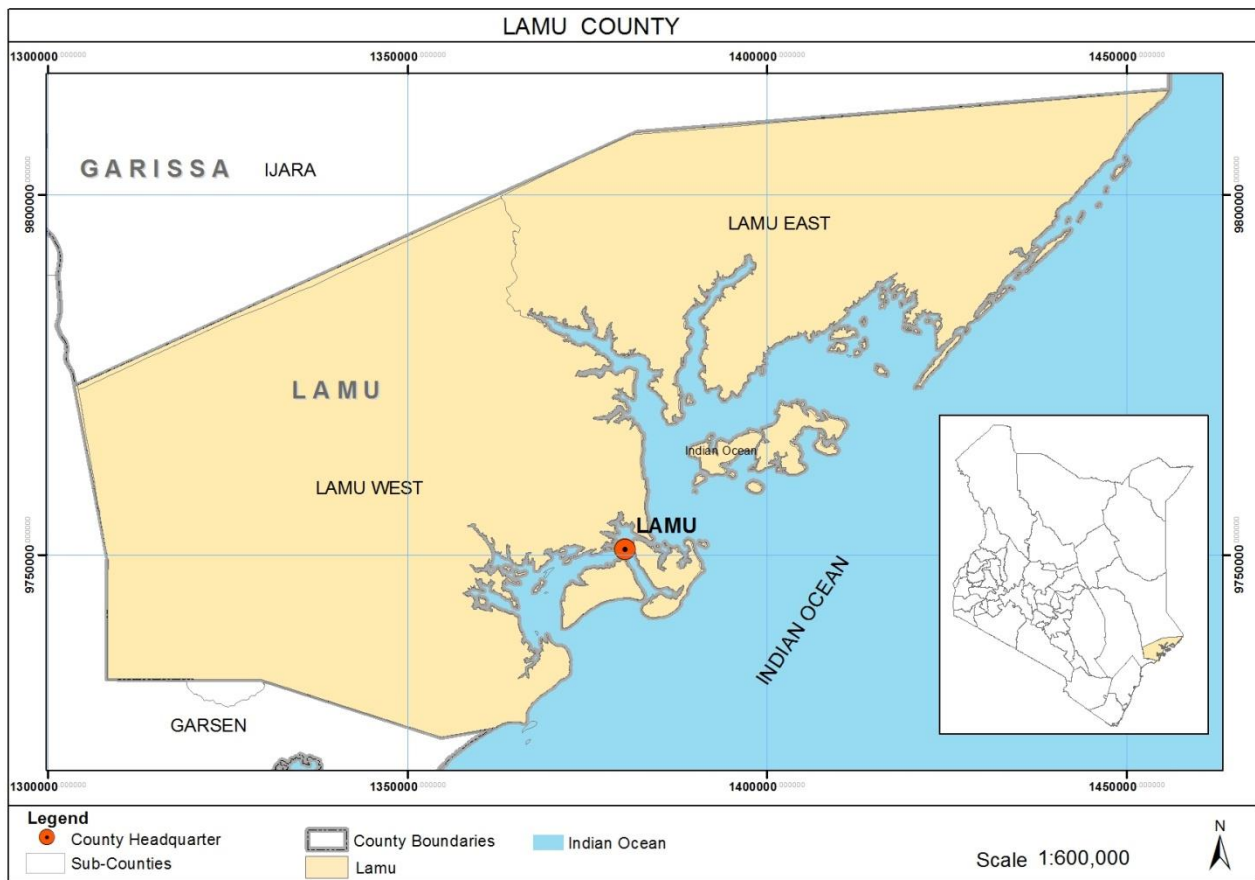
3.2 Location Context

Covering an area of approximately 6,253 km², Lamu County is located on the North coast of Kenya and is one of the six Counties in the coastal region of Kenya as indicated in Map 1 below. It borders Tana River and Garrissa Counties to the southwest and north respectively. Republic of Somalia is to the northeast and the Indian Ocean to the south. It lies between latitudes 1° 40' and 2° 30' South and longitude 40° 15' and 40°38' East. The County is divided from the rest of the Country by an extended and dry zone - the Taru desert

The County consists of a vast mainland and 65 Islands forming the Lamu archipelago. Of these Islands, the five major ones that are inhabited include Lamu, Manda, Pate, Kiwayu, and Ndau. Lamu has a coastline of approximately 130 km and is renowned for its rich biodiversity and unique ecosystem that combines both marine and terrestrial wildlife. The Lamu Archipelago is a significant world ecological and cultural heritage with 75% of Kenya's mangrove forests located here. The area has an outstanding and endemic marine biodiversity of diverse coral reefs, sea-grass beds, sand bars, lagoons and creeks that support a lucrative fishing industry.

The map below shows the location of Lamu County.

Map 1: Location of Lamu County



Source: State Department for Physical Planning, 2022

3.3 Bio-Physical Context

Lamu County is generally flat and lies between altitude zero and 50m above sea level with the exception of the coastal sand dunes and the Mundane sand hills which hardly exceed 100 m above sea level. The highest areas of Lamu County are around Samburu Sand Hills and the Boni-Lungi Forest ecosystem.

The main topographic features found in the County include; the coastal plains, island plains, Dodori River plain, the Indian Ocean and the sand dunes. The coastal plain, though not extending to the coastline, creates the best agricultural land in the County. The island plain is found in the coastal, northern and western parts of the County which have good potential for agricultural development. The Dodori River plain which is in the Dodori National Reserve is home to many wildlife species. The Indian Ocean provides a wealthy marine ecosystem which supports livelihoods of the County mainly through fishing and tourism activities. The most extensive terrain in Lamu County is the Inland Plain which occupies the northern and western-most part of the County. The inland plain

is punctured with seasonal water bodies being mostly large swampy areas and lake wetlands such as Lake Mkungunya, Lake Amu and Lake Moa. The County's coastal plain covers most of the coastline but is interrupted in some areas by the coastal sand dunes.

There are four major catchment areas each with unique characteristics. They are: Dodori, Coastal zone, Duldul, the Lamu Bay drainage and Tana River catchments. The County has no permanent rivers but seasonal streams which flow from the west towards the south eastern part of the County, with none reaching the sea. The only permanent open water site in the County is Lake Kenyatta in Mpeketoni which has been known to dry during exceptionally dry years. The County has several swamp areas occasioned by rain water with the main ones located in Dodori, BeleBele in Hindi, Ziwa la Magarini, and Chomo Ndogo - Chomo Kuu along the Hindi-Bargoni road, Luimshi, Kenza and Kitumbini and Ziwa la Gorjji in Witu.

3.4 Socio-Economic Background

According to the Kenya National Bureau of Statistics (KNBS), 2019, Lamu county has total of 101,539 persons comprising 53,045 males (52%) and 48,494 females (48%). Table 2 below indicates the population projection for Lamu upto 2045 as per the planning period of NSP.

Table 2: Population Projection to the year 2045

YEAR	2019	2020		2025		2030		2035		2040		2045	
Population size	101,539	148,666		174,870		205,692		241,947		284,592		334,753	
		<i>M</i>	<i>F</i>	<i>M</i>	<i>F</i>	<i>M</i>	<i>F</i>	<i>M</i>	<i>F</i>	<i>M</i>	<i>F</i>	<i>M</i>	<i>F</i>
		78,793	69,873	9,2681	82,189	109,017	96,675	128,232	113,715	150,834	133,758	177,419	157,334
households	38,896	40,180		47,262		55,592		65,391		76,917		90,474	
Area	6,253 Km ²	-	-	-	-	-	-	-	-	-	-	-	-
Density	23	24		28		33		39		46		54	

Source: State Department for Physical Planning, 2022

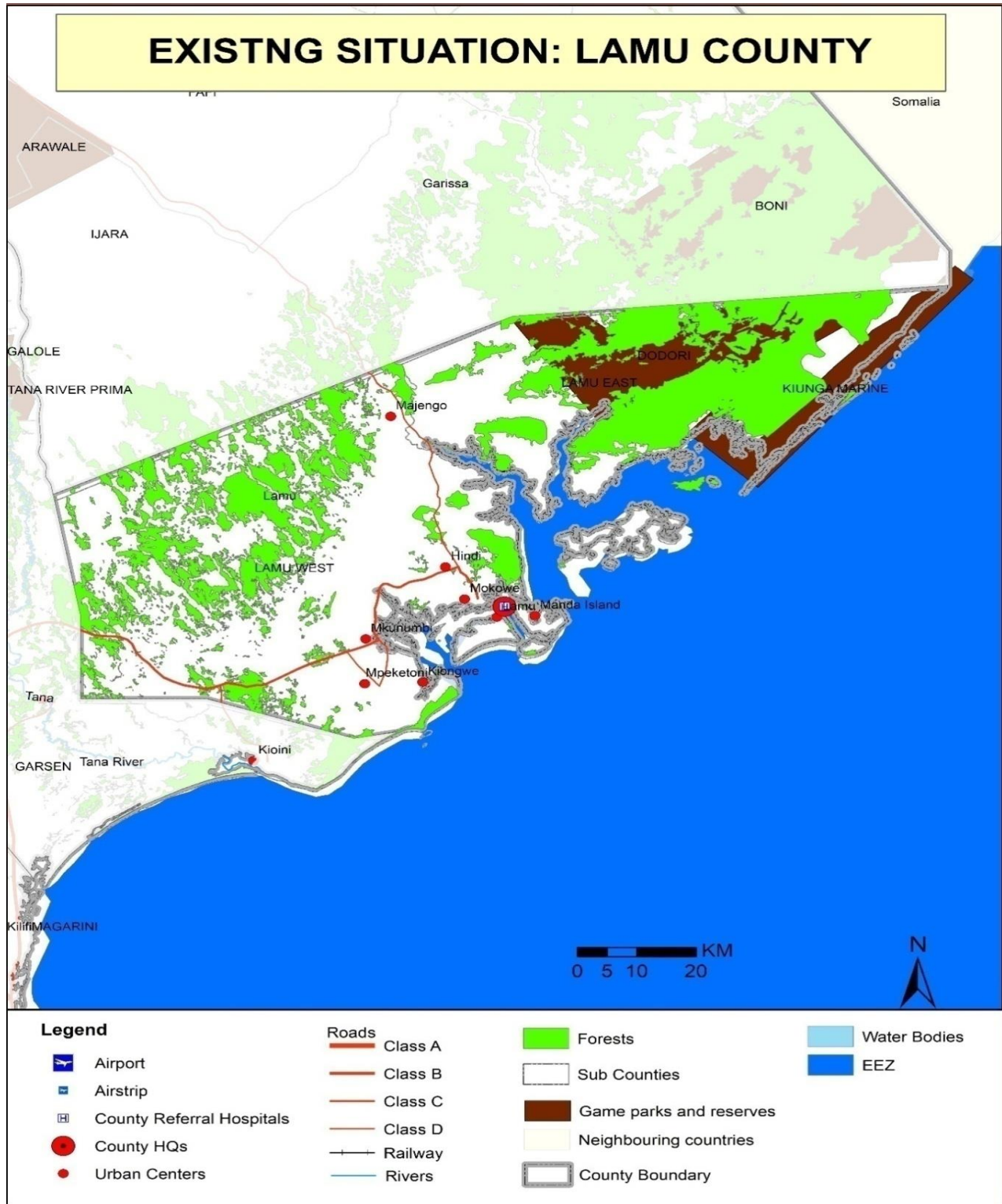
The major economic activities include; tourism, agriculture, fishing, livestock keeping, trade and commerce and manufacturing. Lamu boasts of a rich unique tourism package - both terrestrial and marine (wildlife, ox bow lakes, beaches, ocean, Marine Park, traditional crafts) culture and heritage. These are indicated in Map 2 above.

The County has an expansive fishing area of the sea (40 traditional fishing grounds and 32 landing sites) and availability of a variety of fish species with potential for improving the economy. The County has commercial centers where trading activities take place specializing in the provision of certain services. They form the nucleus of urbanization, commercial development and industrialization. It is imperative that these centers be planned and provided with requisite services to facilitate investments, and accommodate human settlements in a compact manner.

Available arable land is approximately 198,000Ha while about 70,000Ha has fertile soils and receives adequate rainfall for agricultural production. The main crops produced in Lamu County include; coconut, cassava, cashew nut and livestock millet (CIDP, 2018).

The map below explains the existing situation of Lamu County.

Map 2: The Existing Situation



Source: State Department for Physical Planning, 2022

3.5 County's Comparative Advantage

- i. Global recognition of Lamu town through UNESCO as a World Heritage town
- ii. The vast coastline; Lamu County occupies 45.7 percent of Kenya's Indian Ocean coastline suitable for development of fishing and tourism
- iii. Existence of Mangrove forests, Taru desert, Dodori National reserve, islands (65) suitable for cultural, urban and historical tourism
- iv. The Coastal Plain and marine ecosystem good for agriculture
- v. The LAPSSET Corridor; The development of Lamu Port promotes the region as an important outlet and means of international maritime transportation hub enhancing regional trade and promoting the region as a financial hub
- vi. Accessibility through Indian Ocean
- vii. The Manda Airport

4 CHAPTER FOUR: DEVELOPMENT STRATEGIES AND POLICY GUIDELINES FOR LAMU COUNTY

4.1 County Specific Issues and Development Strategies

This section seeks to provide strategies for spatial growth and development of the County by addressing the factors that prevent the County from achieving the intended goals and objectives. The development strategies discussed are aimed at managing the global impacts, optimizing use of natural resources, creating a County balance and transforming rural areas.

The following are detailed NSP county-specific issues and development strategies that apply to Lamu County.

Table 3: County Specific Issues and Development Strategies

Strategy 1: Enhancing Global and National Competitiveness		
Opportunities	Constraints	Strategies
Strategic Location on the Indian Ocean provides an important international maritime contact which is important for international maritime transportation, trade, fishing and marine research	<ul style="list-style-type: none"> ✓ Unattractive Business Climate (regulatory and tax frameworks, enforceability of contracts, red tape, barriers to competition, subsidies, corruption) ✓ Inefficient Transport System ✓ Unreliable Supply and High Cost of Energy 	<ul style="list-style-type: none"> ✓ Development of a resort city in the County ✓ Tap into the already constructed Lamu Port Southern Sudan Ethiopia Transport Corridor (LAPSSSET) to spur growth in the County ✓ Upgrading and improvement of the Manda Airport ✓ Development of the Blue Economy, cultural, historical and beach tourism ✓ Development of an oil refinery plant in the County
Strategy 2: Optimizing Use of Land and Natural Resources		
Agricultural Capability Assessment		
Opportunities	Constraints	Strategies
Transition Areas – These areas have the ability to support both livestock farming and crop farming albeit limitations of rainfall scarcity and unreliability	<ul style="list-style-type: none"> ✓ Use of inappropriate farm inputs and technology ✓ Poor agricultural support infrastructure 	<ul style="list-style-type: none"> ✓ Provide subsidies to promote the use of appropriate farm inputs and technology ✓ Improve the transport infrastructure in agricultural areas ✓ Provide relevant Agricultural support infrastructure ✓ Exploit/harness potential water

		resources (coastal waters)
High potential for irrigation agriculture	<ul style="list-style-type: none"> ✓ Reduced soil fertility and depth ✓ Poor agricultural support infrastructure 	<ul style="list-style-type: none"> ✓ Promote the use of appropriate farm inputs and technology by providing subsidies and incentive ✓ Improve on transportation infrastructure in the agricultural areas
Aquaculture and marine-culture	<ul style="list-style-type: none"> ✓ Lack of requisite equipment and technology to tap fishing potential 	<ul style="list-style-type: none"> ✓ Provide subsidies on fishing equipment and undertake research on best fishing practices
Ocean and deep sea fishing	<ul style="list-style-type: none"> ✓ Lack of appropriate equipment and technology to tap the fishing potential ✓ Climatic change ✓ International and national regulations ✓ Water pollution 	<ul style="list-style-type: none"> ✓ Provide subsidies on fishing equipment and undertake research on best fishing practices ✓ Control of fishing territories in the Country ✓ Control water pollution
Blue Economy		
<p>Use of the ocean and its resources (<i>both aquatic and marine spaces</i>) for sustainable economic development & encompassing; fisheries, aquaculture, tourism, transport, shipbuilding, energy, bio prospecting and underwater mining</p> <ul style="list-style-type: none"> ○ Lamu County occupies 45.7% of Kenya's Indian Ocean coastline suitable for development of fishing and tourism ○ High potential for deep sea fishing 	<ul style="list-style-type: none"> ➤ Unexploited and undeveloped rich coastal and maritime resources ➤ Underutilized deep sea fishing ➤ Domination of deep sea fishing by foreign fishing companies ➤ Low level of awareness ➤ Inadequate technology ➤ Lack of appropriate skills and financial resources 	<ul style="list-style-type: none"> ➤ Develop strategies to facilitate sustainable exploitation of the blue economy sector ➤ Tap the blue economy it into the mainstream economic development of the Country
Environmental Conservation and Protection		
Coastal area; (Agriculture, Fishing, Tourism)	<ul style="list-style-type: none"> ✓ Destruction of coastal eco-systems ✓ Depletion of marine resources 	<ul style="list-style-type: none"> ✓ Strict regulation of exploitation of marine resource ✓ Preparation of Coastal Management Plans
Protection area Rank 1; Wetlands &	<ul style="list-style-type: none"> ✓ Deforestation ✓ Encroachment by human settlement and 	<ul style="list-style-type: none"> ✓ Development is not permitted in these areas except for the purpose of eco-tourism and research

Natural marine forest (Recharge water Systems and Carbon sinks and Biodiversity)	<ul style="list-style-type: none"> activities ✓ Pollution 	
Protection area; Rank 2 Water bodies (Ocean & rivers), Parks and conservancies (Sources of fish, Habitants for wildlife and for Tourism activities)	<ul style="list-style-type: none"> ✓ Drying up of water sources ✓ Pollution and destruction of the marine ecosystem ✓ Encroachment by human settlement and activities ✓ Unsustainable abstraction of water 	<ul style="list-style-type: none"> ✓ Control water abstraction ✓ Preservation and conservation of the marine biodiversity ✓ Regulated tourism related activities can be allowed in these areas ✓ Controlled development of hotels parks and conservancies can be permitted ✓ No change of use is permitted in these areas except for conservation purpose
Natural Resources		
Diverse Natural Resource Base; Natural Deep harbor, Sandy Beaches, The Ocean, Minerals and Good Soils/Blue Economy	<ul style="list-style-type: none"> ✓ Low level of awareness ✓ Inadequate technology ✓ Lack of appropriate skills and financial resources 	<ul style="list-style-type: none"> ✓ Development strategies to facilitate sustainable exploitation of the rich coastal and maritime resources, including fishing, aquaculture, transportation, shipbuilding and underwater mining activities which have largely been untapped ✓ Harnessing of tourism potential through beach tourism, deep sea fishing, hotels and boat racing
Wind and solar energy sources	<ul style="list-style-type: none"> ✓ Inadequate technology and exploration of infrastructure ✓ High costs of exploiting available natural resources 	<ul style="list-style-type: none"> ✓ Optimal utilization of the available natural resources ✓ Invest in appropriate technology and infrastructure ✓ Undertake further exploration of the available natural resources in the County
Industrial Potential		
Rural based industries	<ul style="list-style-type: none"> ✓ Poor linkages to the markets due to poor transportation and support infrastructure ✓ Low technological adaptation for value addition and price 	<ul style="list-style-type: none"> ✓ Development of rural growth centers within the County ✓ Material oriented industries to be directed to rural growth centers ✓ Provide adequate transport and support infrastructure ✓ Diversify energy production sources to reduce costs of production and enhance its

	fluctuation	reliability
Agro – based Industry	<ul style="list-style-type: none"> ✓ Low adoption of technology ✓ Inadequate transport infrastructure ✓ Price fluctuations in products (coconut, cassava and cashew nut) ✓ Lack of established Value chains 	<ul style="list-style-type: none"> ✓ Provide appropriate technology to enhance value addition ✓ Provide adequate, supportive transport and infrastructure ✓ Diversify energy production sources to reduce costs of production and enhance its reliability ✓ Promote the formation of cooperatives and Saccos to advance marketing of agro - products
Cottage industries and crafts	<ul style="list-style-type: none"> ✓ Insufficient market for finished products ✓ Lack of frameworks to safeguard intellectual property rights (IPR) 	<ul style="list-style-type: none"> ✓ Promote assertive marketing campaigns for products both domestically and internationally ✓ Sensitize players in the sector on the aspect of IPR and enforce regulations on the same
Mineral-based industries	<ul style="list-style-type: none"> ✓ Lack/low adoption of appropriate equipment and technology for exploration and exploitation ✓ Inadequate transport infrastructure ✓ High energy costs 	<ul style="list-style-type: none"> ✓ Invest in exploration of potential mineral reserves ✓ Provide adequate transport and support infrastructure ✓ Diversify energy production sources to reduce costs of production and enhance its reliability

Tourism Potential

<ul style="list-style-type: none"> ✓ Coastal Circuit; Safari, Cultural, Beach, Urban, Eco- (green Tourism) & Historical Tourism <i>(Wildlife, ox bow lakes, beaches, ocean, marine park, traditional crafts, culture and heritage, Mangrove forests, Taru desert, Dodori National reserve, islands(65)</i> 	<ul style="list-style-type: none"> ✓ Threat of terrorism ✓ Poor marketing strategies to promote tourism ✓ Degradation of tourism sites ✓ Underdeveloped tourism sites and products ✓ Season based international tourism ✓ Weak integration of ICT in the development and management of the tourism value chain 	<ul style="list-style-type: none"> ✓ Promote domestic tourism by providing incentives and subsidies ✓ Increase the County's tourism market segment ✓ Strict enforcement of the existing regulations for safeguarding the protection areas ✓ Invest in ICT infrastructure and capitalize on online marketing
---	--	---

Strategy 3: Promoting Balanced Regional Development

Potential	Constraints	Strategy
-----------	-------------	----------

<ul style="list-style-type: none"> ➤ Lamu County is classified under the Northern Region with existing resources in Marine Forests, Minerals, Agricultural based activities (Coconuts, Cashew nuts), Coastline tourism Ocean water resources, Fishing & filming ➤ It is further classified under the Coastal belt and the Blue Economy region which has the highest potential for marine fishing and mariculture, off shore gas and oil production, tourism, energy generation 	<ul style="list-style-type: none"> ✓ The Northern region is less developed in terms of infrastructural facilities and services (road network, social facilities), energy, information and communication ✓ Under exploitation of available resources ✓ Weak linkages between regions 	<ul style="list-style-type: none"> ✓ Establish economic zones within the County to promote processing and value addition of the various products ✓ Strengthen the established economic blocks in the region ✓ Encourage equitable exploitation and sound management of mineral resources within the County while ensuring local participation for improved economic development ✓ Promote investment in sustainable coastal tourism ✓ Promote industrialization and value addition through the provision of support infrastructure ✓ Tap into the already developed LAPSET corridor to spur growth within the County
---	--	--

Strategy 4: Promoting Rural Development

Potential	Constraints	Strategy
<p>Better Developed County - Poverty level below 50% with potentials in Agriculture, tourism, irrigation and dairy production</p>	<ul style="list-style-type: none"> ✓ Under-exploitation of resources ✓ Low productivity ✓ Slow adoption of technology and innovation ✓ Inefficient and dilapidated infrastructure facilities and services ✓ weak rural urban linkages 	<ul style="list-style-type: none"> ✓ Develop appropriate transport and infrastructural facilities and services to support the exploitation of the natural resources in the rural areas as well as the opportunities they present to spur economic development. ✓ Promote rural industrialization which includes, rural tourism, mining and agro-based industries through establishment of production units in different rural areas in relation to their potential ✓ Provision of education and training by the established institutions, adoption of modern technology and giving of incentives to the farmers ✓ Promote urban containment to reduce effects of urban sprawl into the agricultural areas of the County as well as encouraging eco-villages in the rural areas of the County ✓ Provide a spatial framework for harnessing natural wealth renewable energy from both solar and wind ✓ Promote sustainable land uses that guarantee

		secure livelihoods, economic and social growth of the County
Strategy 5: Urbanization		
Potential	Constraints	Strategy
<ul style="list-style-type: none"> ✓ Lamu town as a County headquarter and a Gateway town ✓ The already developed LAPSSET project 	<ul style="list-style-type: none"> ✓ Skewed Spatial distribution of urban centers and urban sprawl ✓ Lack of Role Specialization of urban centers within the County ✓ Underdeveloped urban infrastructure in Lamu municipality ✓ Land and Governance issues ✓ Unplanned rural centers ✓ Growth of informal settlements ✓ Poor implementation of development plans and planning policies 	<ul style="list-style-type: none"> ✓ Promote the development of centers within the County as per their potential and population as local, market, rural, urban centers and growth centers ✓ Carry out an analysis of the strengths of each town within the County and leverage on their competitive advantages ✓ Investment in the infrastructure of all the centers to support the identified function ✓ Create an enabling environment for commercial and industrial developers to activate potential development within the urban areas ✓ Provide alternative areas for development of urban centers within the County by provision of services and infrastructure closer to the rural areas for purposes of urban containment and stimulating rural growth ✓ Strengthen urban-rural linkages through provision of integrated transportation and communication system to reduce the rate of urbanization and improve the rural economy

4.2 The National Spatial Plan Policy Guidelines and Measures for Lamu County

This section seeks to provide the spatial policy guidelines and measures aimed at promoting the achievements of the objectives of the National Spatial Plan using its guidelines. They aim at enhancing global and national competitiveness and economic efficiency, optimizing the use of land and natural resources, promoting regional balanced development and conservation of the environment.

These policies are supported by a wide range of measures which spell out the specific actions to be undertaken to actualize the policy intentions. The policies shall ensure that the County is nationally competitive as an investment destination, especially in emerging sectors such as the ICT. The policies will also be implemented by the County government's agencies responsible for planning and development control as well as the authorities responsible for land administration.

The following are the policies and measures specific to Lamu County.

Table 4: NSP Policy guidelines and measures for the County

No	Thematic Area	Policy Guidelines	Measures
1.	Resource Growth Potential - Port and gateway town, Tourism and culture, industrial development, trade and commerce, Fisheries	<ul style="list-style-type: none"> ▪ Development of tourism infrastructure ▪ Investment in physical and social infrastructure ▪ Sustainable use and exploitation of the existing natural resources ▪ Concentrated development around key urban areas within the County ▪ Resource conservation and cultural preservation of the Lamu island and the coastal belt ▪ County to be developed based on its Blue Economy potentials 	<ul style="list-style-type: none"> ▪ Selective development concentration ▪ Infrastructure provision in all human settlement zones ▪ Environmental protection of marine reserves and forests ▪ Conservation of unique cultural landscape and resources ▪ Development of small and medium urban Centers within the County ▪ Rural development through provision of infrastructure, development of agricultural sector and the related economic activities
2	Enhancing	Adoption of selective concentration in	<ul style="list-style-type: none"> ▪ Concentrate urban based economic activities in such as

<p>National Competitiveness <i>- Lamu is Proposed as an urban conurbation due to its locational advantages and to act as an alternative growth area -Lamu seaport and the LAPSSSET project</i></p>	<p>planning and location of urban based economic activities in all counties to leverage on national competitiveness</p>	<p>industrial and manufacturing, ICT and knowledge based services in Lamu, to spur its economic development</p> <ul style="list-style-type: none"> ▪ Exploit natural resources endowments in the County ▪ Prioritize the preparation of Spatial Development Plans to guide development in the County - Lamu town
	<p>The major urban areas within the County shall be planned and provided with appropriate infrastructure to enhance efficiency and quality of life</p>	<ul style="list-style-type: none"> ▪ Enhance the Livability Index for urban areas by providing quality and affordable housing, efficient public transportation, improving neighborhood characteristics ▪ Improve the quality of the environment and healthcare, create job opportunities and promote civic and social engagement within the County ▪ Provide appropriate trunk infrastructure in the form of reliable energy, water, sanitation and ICT ▪ Advance Technological readiness through the provision of technological centers linked to different levels in the country; science parks, Research laboratories ▪ Improve the road infrastructure by providing for modal split, linkages and interchanges
	<p>Optimal and Sustainable utilization of land and natural resources of the County to enhance national competitiveness</p>	<ul style="list-style-type: none"> ▪ Encourage the transformation from traditional farming and livestock keeping methods to modern practices ▪ Widen the economic base of the County through strengthening of agricultural downstream processing of the agricultural products ▪ Identify and develop the tourism potential within the County ▪ Explore and exploit the mineral, energy and water potentials ▪ Provide transportation networks and other infrastructure necessary to support exploitation of land and other natural resources within the County ▪ Provide technical training and social development programmes to enhance integration of the communities in

			<p>the rural areas into the modern economy</p> <ul style="list-style-type: none"> ▪ Support development of urban areas in the County to catalyze development
		Enhancing the efficiency of the transportation network to take advantage of the strategic location and position of the County	<ul style="list-style-type: none"> ▪ Tap into the developed LAPSSET corridor to spur economic development ▪ Tap into the developed Lamu port ▪ Develop the railway facilities from Lamu to Sudan and Ethiopia as proposed in the LAPSSET ▪ Provide for robust transportation for efficient, modern and low -cost connectivity by Sea, Air, Rail, Road and Fibre Optic ▪ Prepare spatial development plans for the main transportation corridors to guide the planning and development of the corridors for sustainable economic development and transportation
		Promote development of the Blue Economy and its integration into the economy of the Country	<ul style="list-style-type: none"> ▪ Develop human capacity in partnership with the academia to conduct research, explore and exploit the blue economy resources ▪ Ensure, together with other coastal Counties the formulation and implementation of an integrated Coastal Land Use Plan ▪ Plan, manage and effectively govern the use of marine space and resources, applying inclusive methods and the ecosystem approach ▪ Develop and apply standards, guidelines and best practices that support a sustainable blue economy ▪ Develop the requisite infrastructure for the development of the Blue Economy ▪ Establish and implement a framework for beach management that ensures public access as well as protection and conservation of the beaches
3	Modernizing	Agro climatic zones I, II, III shall be	<ul style="list-style-type: none"> ▪ Urban spatial development plans shall be prepared in respect

	Agriculture	safeguarded against the threat of urbanization and land subdivision	<p>of urban areas for purposes of setting urban growth limits</p> <ul style="list-style-type: none"> ▪ High potential agricultural land falling between the urban areas in the County shall be strictly designated for agriculture production purposes ▪ Further Subdivision of land shall be strictly regulated ▪ New urban developments shall be encouraged
		The use of land in the agricultural potential areas in the County shall be intensified to increase productivity	<ul style="list-style-type: none"> ▪ Adopt modern agricultural production methods and practices ▪ Upscale the adoption of technology in agricultural production ▪ Encourage mixed farming ▪ Promote agri-business ▪ Provide appropriate infrastructure to support the exploitation of the agricultural potential areas of the County
		Optimize the fishing potential of the County to increase the food stock and export earnings	<ul style="list-style-type: none"> ▪ Protect the inland fishing resources from over fishing, pollution and destruction of the breeding grounds ▪ Support the sustainable exploitation of sea fishing resource in the EEZ and the continental shelf ▪ Encourage small holder farmers to establish fish farms in areas with potential throughout the County ▪ Undertake research to identify all the areas with potential for fish farming in the County ▪ Provide appropriate infrastructure to support the fishing industry ▪ Increase access to fishing equipment by making them affordable through reduced taxation
4	Diversifying Tourism	Promote diversification of tourism by offering diverse products throughout the County	<ul style="list-style-type: none"> ▪ Together with other Coastal Counties Lamu County shall develop the coastal circuit to offer; beach and adventure tourism, ecotourism, sport tourism, cultural tourism, medical tourism, MICE, cultural and heritage, agro tourism, safari and wildlife, ecological, archeological and historical tourism and urban tourism

		<p>Provide appropriate tourism support infrastructure and facilities</p>	<ul style="list-style-type: none"> ▪ Carry out an inventory of tourism infrastructure and facilities in the County ▪ Upgrade the existing tourism facilities and infrastructure ▪ Develop the requisite tourism support infrastructure and facilities ▪ Formulate County planning regulations and standards to guide tourist specific infrastructure and facilities ▪ Provide and upgrade the ICT infrastructure to support tourism ▪ Adopt low carbon and green tourism infrastructure options
		<p>Tourist attraction areas and sites within the County shall be conserved and protected</p>	<ul style="list-style-type: none"> ▪ Prohibit the location of incompatible land use activities and strictly regulate developments within the tourist attraction sites
		<p>Appropriate transport infrastructure shall be provided to link the different coastal tourist circuits, attraction areas and sites</p>	<ul style="list-style-type: none"> ▪ Prepare and implement an integrated Tourism Transportation Master Plan together with the other coastal Counties ▪ Upgrade the Manda Airport and other air transportation facilities within the County
		<p>Enhance the Governance of the tourism sector within the County and the entire Coastal circuit</p>	<ul style="list-style-type: none"> ▪ Prepare integrated spatial plans to guide development of the tourism sector ▪ Prepare and implement National Policies on land use, wildlife and tourism ▪ Undertake research to identify more tourist attraction areas and sites and inventorize Agro tourism sites in the potential areas of the County ▪ Enhance tourism dedicated security to the tourism sector ▪ Identify and map potential eco tourism development sites ▪ Undertake awareness campaigns on the value of eco-tourism to the industry players locally ▪ Develop standards for eco-tourism establishments ▪ Facilitate access to eco-tourism development incentives

		<p>Spatial Development plans shall be prepared to guide the implementation of the flagship projects for the tourism sector</p>	<ul style="list-style-type: none"> ▪ Prepare a Lamu Resort City Local Physical and Land Use Development Plan ▪ Together with other Coastal Counties Prepare Coastal Beach Ecosystem Management plans ▪ Prepare Ecosystem area plans for all parks and reserves in conjunction with national government to address problems of unplanned development of lodges and poor access roads within these areas ▪ Prepare plans for Lamu old town cultural heritage sites
5	Managing Human Settlements	<p>Plan for the anticipated increase in population in the urban areas of the County</p>	<ul style="list-style-type: none"> ▪ Increase the housing stock by planning and redeveloping the existing housing areas in the County ▪ Plan and designate land for new housing schemes ▪ Upgrade the existing and provide additional infrastructure and facilities to support housing development in the urban areas of the County ▪ Formulate enabling local policy frameworks to support employment and income generation in the County ▪ Provide efficient transportation and quality infrastructure in human settlements to support industrial and service sectors ▪ Promote adoption of technology and fiscal incentives and market support for the existing informal sector in the County
		<p>Rural growth centers within the County shall be rationalized and supported to act as central places and human settlements shall be clustered to free the agricultural land</p>	<ul style="list-style-type: none"> ▪ Provide basic services such as extension services, health facilities, markets, sanitation, water, power and education to improve the quality of rural life ▪ Undertake sensitization and awareness campaigns on the need to conserve agricultural land by discouraging land fragmentation ▪ Progressively link growth centers by means of secondary roads ▪ Promote sectors such as agriculture that have potential to

			<p>stimulate rural development</p> <ul style="list-style-type: none"> ▪ Incorporate disaster management and mitigation in the planning for rural settlements
		Human settlements shall be developed in line with environmental and natural resources conservation to improve living conditions	<ul style="list-style-type: none"> ▪ Map out and prohibit development in environmental sensitive areas ▪ Plan and provide an integrated waste management system ▪ Prepare and implement zoning guidelines to ensure compatibility of land uses in human settlement areas ▪ Promote social organization and environmental awareness through the participation of local communities in the identification of public service needs ▪ Strengthen the capacity of the local governing bodies to effectively deal with environmental challenges associated with rapid and sound urban growth ▪ Empower community groups, nongovernmental organizations and individuals to assume responsibility and authority for managing and enhancing their environment ▪ Deliberately provide adequate and functional open spaces in urban places within the County ▪ Prescribe planning standards for open/green spaces on private development ▪ Encourage non-motorized transport (NMT) and re-introduction of public transport in urban centers within the County
		Provide an efficient, reliable and effective transport system for human settlements	<ul style="list-style-type: none"> ▪ Plan and develop an integrated urban transport system to enhance provision of relevant modal split within the County ▪ Integrate land use and transportation planning to encourage development patterns which reduce transport demands ▪ Establish an effective transport management system that enhances the reliability and efficiency of the transport system

			<ul style="list-style-type: none"> ▪ Improve the road conditions and expand their linkages to human settlements ▪ Integrate NMT with existing transport infrastructure ▪ Incorporate the concept of green energy in transport systems planning and redevelopment
		Upgrade the existing settlements and forestall new informal settlements	<ul style="list-style-type: none"> ▪ Encourage redistribution of urban income through integrated development planning encompassing social, economic and physical factors ▪ Prepare Local Physical Development Plans for purpose of renewal and/or redevelopment of the existing informal settlements ▪ Implement the housing policy that focuses on providing affordable and accessible housing for all ▪ Ease the process of issuance of ownership documents to the legal owners in order to encourage formal developments ▪ Enforce development control regulations and adherence to the building code and standards ▪ Enhance coordination of donor agencies activities within informal settlements by relevant authorities for optimal returns
		Manage and control peri-urban development to contain urban growth within its limits and protect rural land uses	<ul style="list-style-type: none"> ▪ Formulate policies for urban containment and densification ▪ Formulate and implement planning legislation on peri-urban planning and management ▪ Institute sanctions on idle land within the County to encourage productive and sustainable land utilization ▪ Create green belt buffer zones to define the urban and peri-urban areas ▪ Incentivize local farmers to preserve agricultural land by promoting local production and providing ready markets for agricultural produce

6	<p>Conserving the Natural Environment</p>	<p>All environmentally sensitive areas shall be protected and utilized in a sustainable manner</p>	<p><i>Wetlands</i></p> <ul style="list-style-type: none"> ▪ Prepare together with the environment sector integrated wetland resource management plans to promote sustainable use of freshwater and wetland resources within the County ▪ Rehabilitate and restore the degraded wetlands and river banks within the County and promote and support establishment of constructed wetlands ▪ Involve and empower communities in the management of fresh water and wetland ecosystems within the County ▪ Promote and institutionalize payment for environmental utility services to support catchment protection and conservation <p><i>Marine Ecosystem</i></p> <ul style="list-style-type: none"> ▪ Together with other coastal Counties, prepare Integrated Marine Resource Management Plans to promote sustainable use of the existing marine resources ▪ Undertake and support research and training in the conservation and management of coastal and marine ecosystems and resources ▪ Promote closer regional and international cooperation (PPPs) in the conservation and management of marine migratory species ▪ Harmonize and coordinate the roles of various regulatory agencies charged with the management of coastal and marine resources ▪ Involve and empower communities in the management of coastal and marine ecosystems ▪ Implement the Integrated Coastal Zone Management (ICZM) Policy and Integrated Ocean Management Policy, Strategy and Action Plan <p><i>Forest Ecosystems</i></p>
---	--	--	--

			<ul style="list-style-type: none"> ▪ Prepare together with the forest sub - sector integrated forest resource management plans to promote sustainable use of forest resources within the County ▪ Develop and implement a County strategy for rehabilitation and restoration of degraded natural and indigenous forests and protect water catchment areas with active community involvement ▪ Support effective implementation of the forest and other related policies and laws including NEMA and The Forest Conservation and Management Act, 2016 among others ▪ Develop and implement County standards, principles and criteria of sustainable forest management ▪ Encourage the development and implementation of appropriate forestry-based investment programmes and projects ▪ Involve and empower communities in the management of forest ecosystems that exist within the County ▪ Determine potential areas for farm/agro land forestry ▪ Promote a forestation and agro-forestry through the County Spatial Planning ▪ Map out potential areas for commercial plantation forestry ▪ Delineate mangrove forest areas and formulate regulations for sustainable utilization ▪ Gazette, protect and rehabilitate degraded forests through re-afforestation by replanting trees on land that was previously forests ▪ Enforce legal and regulatory provisions for forest management and protection ▪ Indigenous forests shall be identified and protected from logging ▪ Involve and empower communities in the management of
--	--	--	---

			<p>forest ecosystems through controlled logging, agro-forestry, re-forestation and natural regeneration</p> <ul style="list-style-type: none"> ▪ Encourage development and implementation of appropriate forestry-based Investment programs and projects
		<p>All County Government agencies shall integrate environmental concerns in policy formulation, resource planning and development processes</p>	<ul style="list-style-type: none"> ▪ Waste Management and Pollution Control: ▪ This will involve research, legislation, use of viable technologies and enforcement of statutory mechanisms for the disposal of human and industrial waste, elimination of harmful emissions including those from factories and motor vehicles ▪ Develop and maintain an inventory of all vital habitats in the County, and create a biodiversity information data base of all plant and animal species, indicating their potential use ▪ Identify species which are rare and endangered with the aim of protecting them from extinction through the establishment of more biosphere reserves, parks and reserves, botanical gardens, arboreta, and through their propagation and captive breeding ▪ Encourage the participation of local communities in conservation and management of their environment ▪ Devise means to measure the value of unexploited natural resources, especially biodiversity within the County in economic terms ▪ Translate into practical conservation actions the provisions of international conventions and agreements relating to conservation of biodiversity to which Kenya is a party
		<p>Community participation shall be mainstreamed in the protection and conservation of natural resources</p>	<ul style="list-style-type: none"> ▪ Sensitize communities living around the existing natural resources on the need for conservation of the resources ▪ Develop mechanisms for sharing benefits accruing from the natural resources by the conservation agencies in

			<p>consultation with the local communities</p> <ul style="list-style-type: none"> Identify and map all disaster prone areas within the County for sustainable management
		The County Physical Planning department shall mainstream climate change into their planning processes	<ul style="list-style-type: none"> Build and strengthen research capacity on climate change and related environmental issues within the County Promote water conservation including rehabilitation and restoration of water catchment areas within the County Develop and promote the use of green energy in the County
7	Integrating the Transportation System	Develop an integrated and functional transport system for the urban areas within the County	<p><i>Air Transport</i></p> <ul style="list-style-type: none"> Provide land for development of the proposed Lamu international airport to support the proposed port, commercial and industrial activities of the northern and coastal region Expand Manda airstrip <p><i>Water Transport</i></p> <ul style="list-style-type: none"> Utilize the developed Lamu sea port for international (Southern Sudan and Ethiopia) and national export and import cargo Develop the existing coastal sea to serve for passenger travel, fishing industry, tourism, other commercial activities and regional needs <p><i>Railway Transport</i></p> <ul style="list-style-type: none"> Expand and develop the railway network as a mode of transportation in the county to optimize on land use, limit pollution, reduce road degradation, maximize on freight and passage carriage and improve efficiency and facilitate the trans-shipment of heavy and hazardous goods from the port Link all major urban centres within the County with the railway system via the modern railway network with the rail stations acting as focal points for community and

			<p>transportation activities</p> <ul style="list-style-type: none"> ▪ Develop the priority route of Lamu-Lodwar for the implementation of the modern railway system <p>Road Transport</p> <ul style="list-style-type: none"> ▪ Extend the national transportation corridors consisting of road and rail to connect the northern corridor to the LAPSET corridor, Lunga Lunga to Lamu, Lamu to Kiunga ▪ Provide access and linkage, between County headquarters; County headquarters and sub – County headquarters and for local access and link them to national transportation corridors ▪ Expand all roads connecting County headquarters to at least 60m and developed to bitumen standard ▪ Expand all roads connecting County headquarters to sub-county headquarters to at least 30m and developed to bitumen standard
		<p>An urban transport policy that facilitates an integrated, balanced and environmentally sound urban transport system in which all modes efficiently play their roles shall be developed</p>	<ul style="list-style-type: none"> ▪ Develop a public transport policy to regulate planning and management of public transport ▪ The County Government to develop policies to limit use of private transport and maximize on public transport ▪ Develop a main public transport termini in all major urban areas the County and the County headquarters to cater for all the various transport modes, including NMIMTs(Non-Motorized and Intermediate Means of Transport) to enhance efficiency and connectivity between transport modes ▪ The County Governments provide a framework for development and management of public service termini by the private sector through public private participation ▪ Restrict entry of private vehicles into the CBDs (Central Business District) the major urban of the County and construct park and ride terminal facilities at designated entry

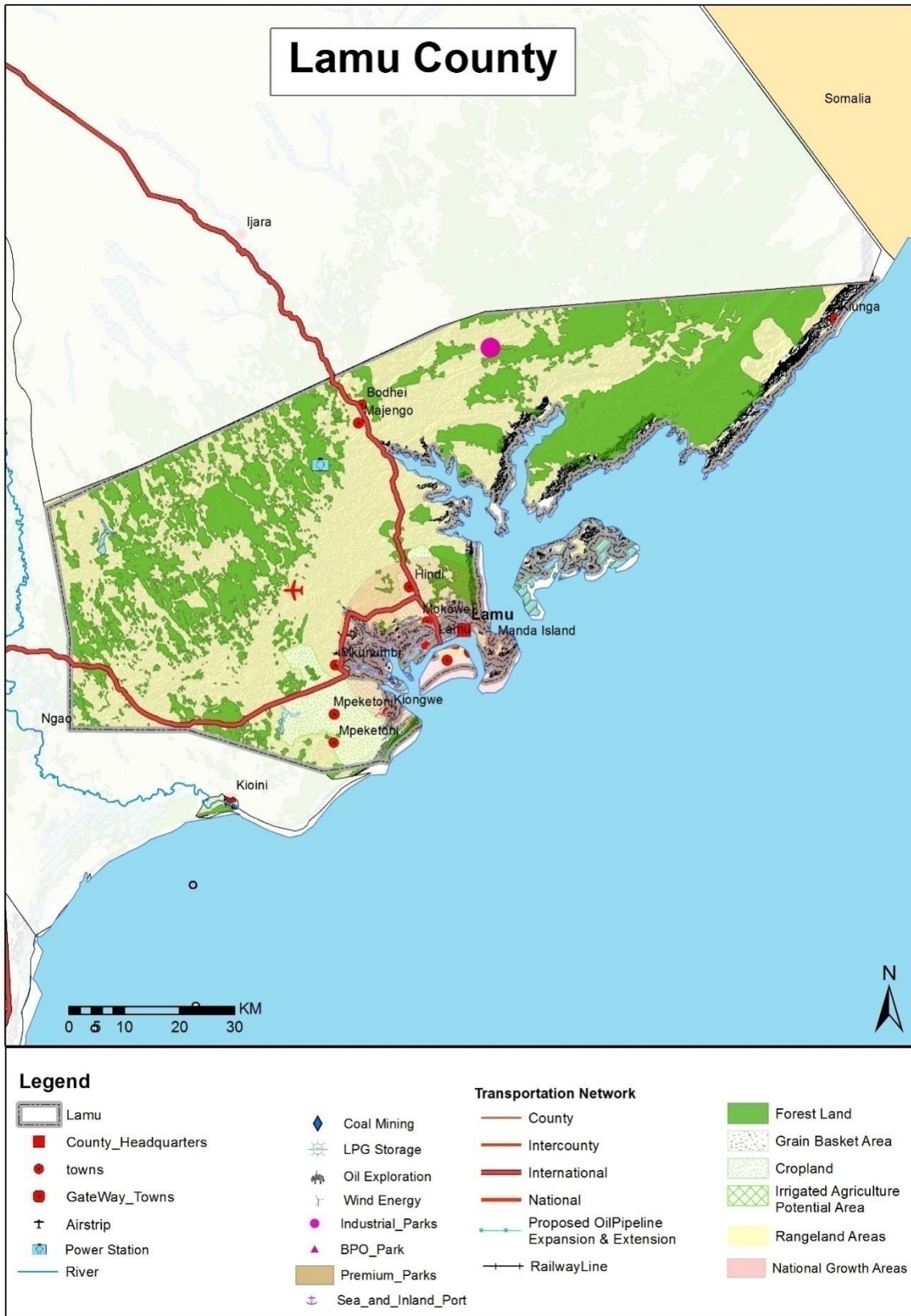
			<p>points to absorb traffic into public transport</p> <ul style="list-style-type: none"> ▪ Plan, construct and manage designated terminal facilities in the periphery of the urban areas in the County to accommodate parking spaces for the private vehicles and interchange to the public transport system ▪ Incorporate an integrated transport network in County and urban development plans ▪ Implement a 24-hour economy to distribute traffic flows on urban roads in the County and alter working shifts and save on cost of travel time ▪ The County Governments to identify, plan and control developments in the satellite towns ▪ The County Government to identify, designate, close and regulate roads to be used by hawkers to display their wares on chosen days and times to decongest the CBDs (Central Business District) of the major urban centers in the County ▪ Designate, plan and regulate strategic areas for taxis operation in the urban areas of the County to enhance safety and order
		<p>Environmental conservation shall be upheld in the planning, development and management of the transportation network</p>	<ul style="list-style-type: none"> ▪ Construction and management of the transport network to abide by environmental regulations and standards ▪ All transport network providers to implement international environmental legislation/agreements; the Clean Air Initiative resolutions that commit African countries to adopt less polluting fuels ▪ Enforce emission testing in all transport modes and set standards and guidelines for decommissioning of vehicles ▪ Promote the use of green energy in all transportation systems
8	Providing	Expansion and improvement of water	<ul style="list-style-type: none"> ▪ Construct and rehabilitate water supply systems in the

Appropriate Infrastructure	reticulation systems to facilitate the access to clean, safe, adequate, reliable and affordable water in human settlements shall be promoted	<p>County</p> <ul style="list-style-type: none"> ▪ Incorporate water provision in all Physical and Land Use Development Plans ▪ Improve water supplies in the major urban areas of the County & expand in the port at Lamu under Lamu Port Southern Sudan and Ethiopia Transport (LAPSSET) Corridor ▪ Build water kiosks and yard taps, develop water supply pipeline systems and sewers, and a comprehensive mapping of all water supplies systems in the County
	A globally competitive, accessible and affordable education, training and research facilities shall be promoted	<ul style="list-style-type: none"> ▪ Universities and other tertiary institutions to invest in research, technology & innovation ▪ Expand access and equity, improve quality and relevance and invest in human resource by enhancing institutionalization of excellence and ▪ Increasing the level of research funding ▪ Mainstream ICT in higher education and training to ▪ Develop and upgrade physical infrastructure in all education institutions to increase their capacity
	Appropriate, quality, efficient and cost effective ICT infrastructure in both rural and urban areas shall be promoted	<ul style="list-style-type: none"> ▪ Develop and upgrade ICT Infrastructure to cover all the rural and local growth centers the County ▪ Mainstream use of ICT in government services (e-government)
	The expansion of sewerage systems and waste management facilities shall be promoted to improve sanitation in human settlements	<ul style="list-style-type: none"> ▪ Expand the sewerage coverage and capacity for Lamu town and all other urban settlements ▪ Apply appropriate technology solutions to sewerage treatment in rural and low density housing areas ▪ Adopt appropriate technology to facilitate reduction, recycle and reuse of waste (3R's) ▪ Undertake rehabilitation of storm water drainage systems in the urban centers

		Plan, develop and maintain sporting infrastructure in the County	<ul style="list-style-type: none"> ▪ Establish County Sports Talent Centers to act as feeds to the international centre to scout, nurture and develop sports talents at the County levels ▪ Rehabilitate the County stadia to international standards to enable the youth to actively develop and tap the immense talent in sports
9	Promoting Rapid Industrialization	Promote the cluster development strategy to focus on proximity to raw materials and markets of County specific products	<ul style="list-style-type: none"> ▪ Concentrate urban-based industries in Lamu town ▪ Mineral-based and cottage industries to be located in-situ where the minerals are found ▪ Promote value addition in processing of local produce in the County
		Identify, plan specific sites for industrial development and service with the appropriate infrastructure	<ul style="list-style-type: none"> ▪ Plan and set aside land for industrial development ▪ Establish Special Economic Zones in Lamu ▪ Develop SME and Industrial Parks in the County ▪ Integrate the industrialization process and environment conservation ▪ Provide an integrated, efficient, reliable and sustainable road, railway and air transport infrastructure for efficient delivery of produce and perishable products ▪ Increase availability of clean water and improve sanitation in the County ▪ Encourage adoption and utilization of ICT in the County in order to enhance the Country's transformation towards an advanced Information Society
		Adequate and affordable energy supply for the industrial sector shall be provided	<ul style="list-style-type: none"> ▪ Adopt renewable energy generation programmes by provision of incentives and enforcement of building laws requiring utilization of renewable energy to lower the demand for energy

Map 3 provides a spatial representation of the policies proposed for Lamu County.

Map 3: NSP Proposals for Lamu County



Source: State Department for Physical Planning, 2022

5 IMPLEMENTATION AND ADOPTION OF THE GUIDELINES

5.1 Overview

The implementation framework identifies activities and further ties them with responsible actors, resources and timeframes adequate for their execution. It constitutes a deliberately established method, means or system of ensuring that the policies, strategies and measures outlined in the guidelines are continuously and consistently executed to achieve their objectives.

To effectively implement the guidelines, the various sectors, actors and levels of planning have been identified and have to work together and the mandate of the sectors at the National and County levels of planning have to be integrated.

5.2 Implementation Channels

The County Specific Guidelines will be implemented through various approaches including:

1. Preparation of spatial plans to integrate and conform to the proposals of the County Guidelines. The plans include:
 - Inter-County Physical and Land Use Development Plans for Metropolitan regions, conservation zones, river basins, water towers, coastal ecosystems, trans-boundary resource areas and transport corridors, among others.
 - County Physical and Land Use Development Plans.
 - Local Physical and Land Use Development plans for Cities, Urban areas, special area plans, subject plans and detailed neighborhood plans, among others.
 - Sectoral plans
2. Integration of the guideline policies, strategies and measures into the County sector plans, programs and projects. Ministries, Departments and Agencies (MDAs), County and National Departments identified in the plan to administer the policies, strategies and measures are required to translate them into action plans, programs and projects and to include them in their subsequent sector plans.
3. Formulation of policies, regulations and standards to guide development control.

5.3 Implementation Framework

The implementation of the various policies, strategies, measures, programs and projects under these guidelines will involve a wide range of actors. It will require a coordinated

approach and partnership between the National and County Governments and non-state actors. It may require re-engineering of institutions and a number of actors to undertake the implementation through a harmonized approach.

The National Spatial Plan identified a multi-leveled framework for implementation of the plan that incorporates all levels of actors. In this regard, the institutions identified in the NSP to undertake implementation of the plan at County-level shall also be mandated to ensure implementation of this Guidelines.

The following are the Institutions mandated to ensure implementation of the County Specific guidelines;

5.3.1 County Physical Planning Committee

The role of the County Planning Committee shall be to ensure aspirations of the guidelines are articulated in preparation of the County Spatial Plans, County Integrated Development Plans and Local Physical and Land Use Development Plans.

The composition of this committee consists of;

- i. The Governor who will be the Chairperson,
- ii. the Deputy Governor,
- iii. the County Executive Committee Members from various sectors
- iv. Directors from various relevant County Departments including Lands and Physical Planning, Economic planning, Agriculture, Industrialization, Tourism, Environment, Transport and Infrastructure

The functions of the committee include;

- 1) To promote effective integration between physical, economic and sectoral planning within the framework of county development policies.
- 2) To provide policy guidance for the implementation of strategic spatial projects
- 3) To ensure that the guidelines policies and measures are mainstreamed in the various county plans.
- 4) To mobilize resource for implementation of the guidelines.

5.3.2 County Planning Unit (CPU)

The Technical Unit shall provide technical support to the various implementing County departments on issues relating to physical planning.

The CPU shall;

- i. Monitor the Implementation of the guidelines.
- ii. To disseminate components of the guidelines to the various county departments.
- iii. Update the County Physical Planning Committee on a regular basis on the implementation of the guidelines.

The County Director of Physical Planning shall be responsible for preparation of an annual state of planning report which shall among other things appraise the status of implementation of the guidelines.

5.3.3 National Land Commission

The National Land Commission shall play its oversight role in land use planning to ensure efficient implementation of the NSP and the guidelines. Other functions of the Commission in the implementation of the NSP and the guidelines include the following: To formulate mechanisms and parameters for monitoring and overseeing land use planning.

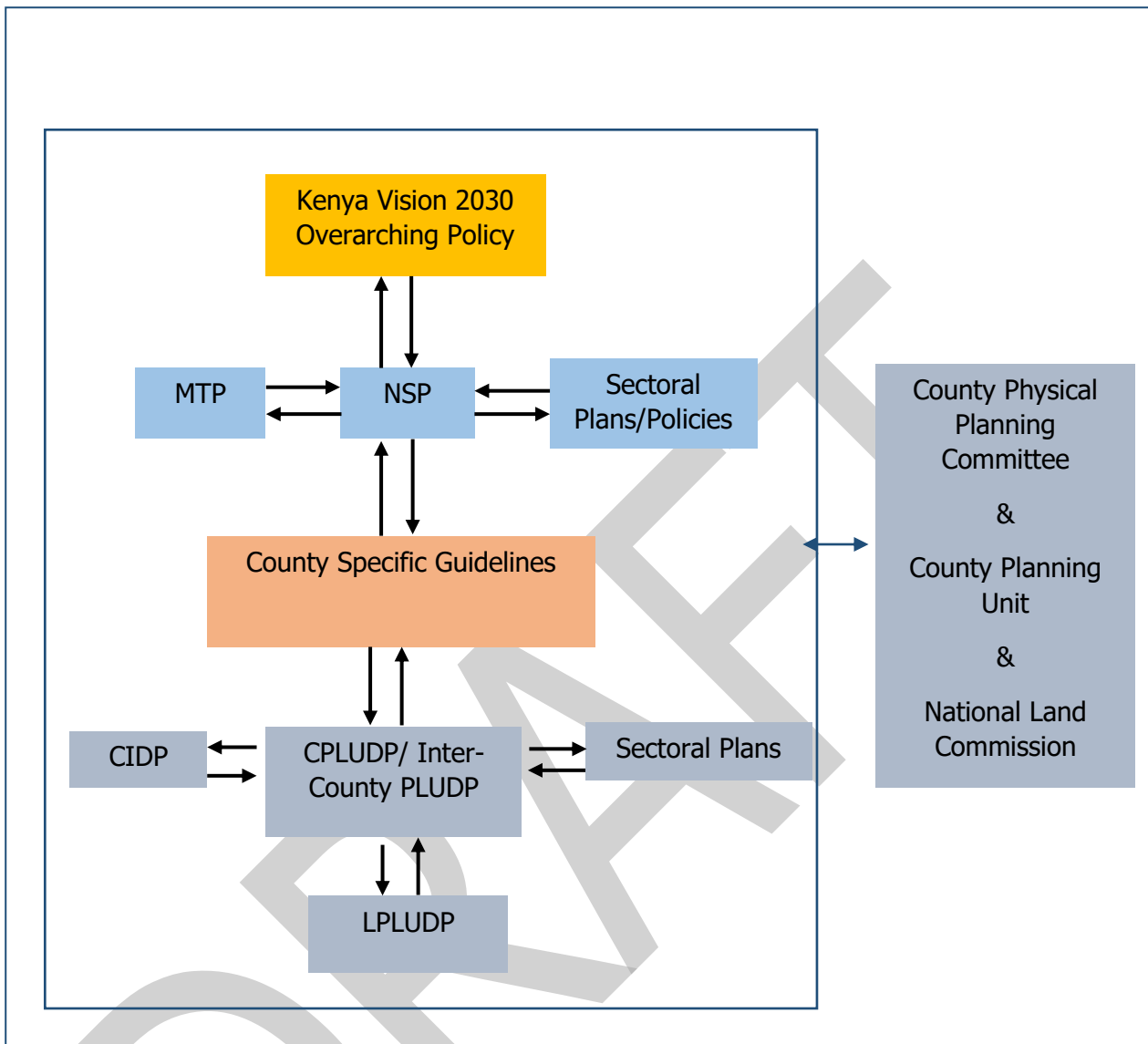
- i. To ensure that relevant planning authorities carry out their functions as required by law.
- ii. To make recommendations for improvements of the planning systems in the county.
- iii. To mobilize resources to support physical/land use planning.

5.4 Monitoring and Evaluation

Implementation of the guidelines will be monitored and evaluated to measure both outputs and outcomes and ensure that the intended actions are implemented in a timely manner. To facilitate attainment of the objectives of the guidelines, performance indicators will be developed by the County Physical Planning Department for efficient monitoring. Periodic reports will be prepared in relation to progress being made in their implementation.

The graphic below illustrates the implementation structure for County Specific guidelines.

Figure 4: Implementation structure of the guidelines



Source: The National Spatial Plan, 2015

5.5 Conclusion

The application of these guidelines will be undertaken by a number of actors and hence the need for a coordinated approach. The lead agency will be Lamu County Government which will be responsible for implementing various county specific initiatives proposed by the guidelines.

The National Government, County Government of Lamu, the private sector and the general public will be critical in actualizing the objectives of these guidelines. The County Physical Planning Committee shall develop a communication strategy to enhance the synergies.

The National Department of Physical Planning shall undertake sensitization, training and capacity building of the County Government and National Government institutions and agencies that will be involved in the implementation of these guidelines. Special attention will be given to the County physical planning units, as they will be expected to provide technical expertise in the implementation of the County specific policies and strategies.