



NATIONAL SPATIAL PLAN IMPLEMENTATION GUIDELINES FOR MANDERA COUNTY

Optimal Productivity, Sustainability, Efficiency and Equity in the use of our
Land and Territorial Space



MINISTRY OF LANDS AND PHYSICAL PLANNING
STATE DEPARTMENT FOR PHYSICAL PLANNING

© 2022

FOREWORD

The Constitution of Kenya apportions responsibility of planning to both National and County Governments. Under the Fourth Schedule on distribution of functions, Part 1 (21) and (32) mandates the National Government with the responsibility of formulating general principles of land planning, co-ordination of planning by the Counties, capacity building and technical assistance to the Counties. On the other hand, Part 2(8) allocates the function of County planning and development to County Governments. It is under these provisions that the County specific guidelines have been prepared.

The Department of Physical Planning prepared the National Spatial Plan (NSP) in response to the Kenya Vision 2030 to guide the spatial development of the country over a period of 30 years beginning in 2015.

It aims at achieving an organized, integrated, sustainable and balanced development of the country by providing a framework for better national organization and linkages between different activities within the national space.

To implement the Plan, the Counties are expected to play a key role by mainstreaming strategies, policies, and measures identified in the NSP into the County spatial planning systems.

The guidelines have identified planning policies, strategies, and measures that Plans at the County level are expected to mainstream and propagate. The policies address among others, the protection of rich agricultural land, development imbalances, conservation of environmentally sensitive areas, urban containment, and promotion of industrial development.

The guidelines provide direction on the existing potentials, the opportunities, the constraints/challenges inhibiting harnessing of the potentials, the strategies to apply, respective policies required, and the necessary measures to achieve optimal productivity, sustainability, efficiency and equity in the use of county land resources.

The guidelines are an opportunity on how best to refocus, vary and complement areas that require different approaches responding to country-specific needs and

promote the livelihoods of their people, while contributing to the national aspirations of vision 2030, regional objectives of the Africa Agenda 2063, and international targets of sustainable development. The refocusing will also be handy in reviewing and making decisions on NSP which is due for review in 2025.

These guidelines are therefore a tool for enhancing this critical path and provide a direction for development planning by the Counties as they discharge their responsibility of preparing county and local physical and land use development plans. The guidelines will also ensure that the County Integrated Development Plans conform to the proposed County specific policy guidelines and measures.

DRAFT

PREFACE

The National Spatial Plan (NSP) recognizes that Kenya is greatly endowed with massive and diverse resources distributed over the national space that require an integrated and coordinated approach for optimal productivity and sustainability.

The County Specific Guidelines have been derived from the National Spatial Plan and provide a planning framework for the integration of the NSP into the county spatial planning system. They are clear statements linking the National Spatial Plan to Inter-County, County and lower-level Physical and Land Use Development Plans and provide clarification on the anticipated sustainable development outcomes of implementing the Plan.

The County Government will adopt, develop and implement their plans based on the policies, strategies, and measures articulated in the guidelines. The realized county plans are expected to guide, harmonize and facilitate development within the county, hence contributing to the overall implementation of the NSP.

The guidelines also form an efficient compass and monitoring tool for National and County Governments to jointly pursue sustainable planning and appropriate implementation mechanisms.

For the county to be nationally competitive, there is need to balance development and promote optimal utilization of land and land-based resources as well as cultivate an integrated approach in addressing the intertwined challenges of regional imbalances/inequalities, rural development, underutilization of the available resources, uncontrolled urbanization, environmental degradation and inefficient transportation. It is imperative therefore, to prioritize the implementation of this strategic document so as to promote balanced development and competitiveness across the county.

EXECUTIVE SUMMARY

The County Specific Guidelines seek to facilitate the implementation of the National Spatial Plan by outlining policies, strategies and measures to guide County spatial planning and development and promote optimal productivity, sustainability, efficiency and equity in the use of land. They provide a framework for preparation of lower-level Plans including Inter-County, County and Local Physical and Land Use Development Plans.

The disconnect between National and County Spatial Planning and development has resulted in uncoordinated and unbalanced development, therefore creating a need for a clear structure that links National, Regional and Local planning and development. This is achievable through integration of the policies, strategies and measures proposed by the guidelines into County Spatial Plans, Programs and Projects, to tackle challenges of unbalanced regional development, urbanization, national competitiveness and unsustainable use of land and natural resources.

The County Specific Guidelines are organized into five chapters detailing various facets. Chapter one provides an overview, purpose and justification of preparation of the guidelines. It also outlines the objectives that the guidelines intend to achieve and details the preparation process as well as intended users. This chapter highlights the key principles that form the basis for preparation of lower level plans including public participation, liveability, sustainable development, urban containment, smart urban growth among others.

Chapter two details the legal and policy provisions that the guidelines are anchored upon. They include, among others, The Constitution of Kenya, 2010, The Physical and Land Use Planning Act No.13 of 2019, County Government Act, 2012, Environmental Management and Coordination (Amendment) Act, 2015, Sessional Paper No. 01 of 2017 on National Land Use Policy and Sessional Paper No. 10 of 2012 on Kenya Vision 2030.

The third chapter analyses the county profile, detailing its location, size, bio-physical characteristics, socioeconomic status and the County's comparative advantage in relation to others. The locational context provides information on the geographical

position and bordering Counties while the biophysical context discusses the topography, hydrology and climate. The socioeconomic status indicates key economic drivers of the County and its population and demographic structure.

Chapter four presents the County specific issues and proposes development strategies to promote national competitiveness, optimal use of land and resources, rural development, balanced intra-county development and urbanization.

Additionally, it provides policy guidelines and measures for County advancement.

The final chapter five focuses on implementation and adoption of the guidelines. The implementation framework identifies institutions, County development programs and projects, and further ties them with responsible actors, resources and timeframes for effective execution. It proposes a framework for ensuring that the outlined policies, strategies and measures are adequately implemented.

DRAFT

Table of Contents

1 INTRODUCTION.....	10
1.1 Background	10
1.2 Purpose.....	10
1.3 Objectives	10
1.4 Scope.....	11
1.5 Justification	12
1.6 Application of the Guidelines	12
1.7 Process of Preparing the Guidelines	12
1.8 Targeted Users of the Guidelines.....	13
1.9 Key Principles	14
2 THE POLICY, LEGAL AND PLANNING FRAMEWORK OF THE GUIDELINES.....	16
2.1 Constitutional context.....	16
2.2 Policy Context.....	16
2.2.1 The Sessional Paper No. 10 of 2012 on Kenya Vision 2030	16
2.2.2 Sessional Paper No. 1 of 2017 on the National Land Use Policy	16
2.3 Legal Context	17
2.3.1 The Physical and Land Use Planning Act, 2019	17
2.3.2 The County Governments Act, 2012.....	17
2.3.3 The Urban Areas and Cities (Amendment) Act, 2019	17
2.3.4 The Environmental Management and Coordination (Amendment) Act, 2015	17
2.3.5 The National Land Commission Act, 2012.....	18
2.4 The Planning Context	18
2.4.1 The National Spatial Plan (NSP).....	18
2.4.2 NSP linkage to Other Plans	19
3 COUNTY PROFILE	21
3.1 Overview	21
3.2 Location Context	21
3.3 Bio-Physical Context.....	23
3.4 Socio-Economic Background.....	23
3.5 County's Comparative Advantage	27
4 DEVELOPMENT STRATEGIES, POLICY GUIDELINES AND MEASURES FOR MANDERA COUNTY.....	28
4.1 County Specific Issues and Development Strategies	28

4.2 National Spatial Plan Policy Guidelines for Mandera County	36
5 IMPLEMENTATION AND ADOPTION OF THE GUIDELINES.....	47
5.1 Overview.....	47
5.2 Implementation Approaches	47
5.3 Implementation Framework.....	48
5.3.1 County Physical Planning Committee.....	48
5.3.2 County Planning Unit (CPU)	49
5.4 Monitoring and Evaluation.....	50
5.5 Conclusion.....	52

DRAFT

List of Figures

Figure 1: The Scope of the Guidelines	11
Figure 2: Policy Focus of the NSP	19
Figure 3: Linkage of the National Spatial Plan to Other Plans.....	20
Figure 4: NSP Implementation Organization Structure	51

List of Tables

Table 1: Targeted Users of the Guidelines	13
Table 2: Mandera County Population Projections.....	24
Table 3: County Specific Issues and Development Strategies.....	29
Table 4: NSP Policy Guidelines for the County.....	37

List of Maps

Map 1: Location of Mandera County.....	22
Map 2: The Existing Situation.....	26
Map 3: NSP Proposals for Mandera County.....	46

1 INTRODUCTION

1.1 Background

The County Guidelines set out policies, strategies and measures that will guide the long-term spatial development of the county for a period of 30 years. They cover the entire county and defines the general trend and direction of its spatial development.

The guidelines have been developed in line with the four thematic areas as outlined in the NSP. They provide a guide to the Planning Authority at the county on how to incorporate the NSP policies, strategies and measures during the preparation of County Spatial Plans and other lower level plans like the Local Physical and Land Use Development Plans consequently implementing the NSP.

The NSP County Specific implementation guidelines summarize the County's existing potentials and opportunities, the constraints (challenges) inhibiting harnessing of the potentials, the applicable strategies and respective policies required, and the necessary measures to achieve optimal productivity, sustainability, efficiency and equity in the use of the county land resources. They act as a reference point

1.2 Purpose

The purpose of the County Specific Guidelines is to provide a planning framework for mainstreaming of the National Spatial Plan to the County spatial planning system.

The guidelines are intended to assist the County enhance the implementation of the NSP by linking the proposed county specific policies, strategies and measures into the County plans, programs and projects while putting measures in place for achieving them. The guidelines inform preparation of various County Physical Plans such as the County Physical and Land Use Development Plans.

For optimal implementation of these plans, a County Integrated Development Plan (CIDP) is essential since it is a sectoral and budgetary based plan that draws its implementation programs and projects from the County Physical Plans.

1.3 Objectives

The guidelines provide policies and strategies to deal with challenges of regional imbalances/inequalities, rural development, underutilization of the available

resources, urbanization, environmental degradation and inefficient transportation. Specific objectives of these guidelines are;

1. To sensitize the County on the provisions of the NSP
2. To promote synergy between National and County Planning
3. To guide the County in the implementation of the NSP
4. To clarify the roles of the different actors in the implementation of the NSP

1.4 Scope

The guidelines and strategies are specific to Mandera County and cover the entire territory of the County measuring approximately 12,246Km². The guideline highlights key facets which include identified challenges, actions, approaches, plans and procedures prescribed to address the challenges, and outline of activities to execute agreed interventions as captured in the National Spatial Plan as indicated in figure 1 below. This guideline shall be operational until the year 2045.

Figure 1: The Scope of the Guidelines



Source: State Department for Physical Planning, 2022

1.5 Justification

The preparation of County Spatial Plans and other lower-level plans which is a mandate of the Counties has been slow and, in some Counties, has not begun at all. These guidelines are therefore a quick reference on how Mandera County can optimize land even in the absence of these plans.

Since the approval and launch of the NSP, its implementation has been undertaken in an uncoordinated manner hence the guidelines will provide standardized approach for all Counties. The guidelines are also an important tool for tracking and evaluating implementation of the NSP both at National and County levels.

1.6 Application of the Guidelines

The guidelines and strategies will be used or applied in the following ways to achieve a more sustained and coordinated development of the County;

- To effectively coordinate planning between the National and the County Government;
- To improve County Government capacity to formulate, coordinate and implement integrated development policies and programs to address spatially unbalanced development;
- To inform strategic infrastructure policy and public investment decisions which support the achievement of balanced development in the County;
- To strengthen County inter-sectoral coordination within a spatial framework and provide the private sector with a clear context in which they can make investment decisions;
- To optimize the use of land and natural resources by providing a framework for making sustainable locational choices for sustainable development and conservation of land productivity in the County.

1.7 Process of Preparing the Guidelines

The process involved reviewing the National Spatial Plan and identifying key issues, spatial policies, development strategies and measures specific to Mandera County.

These key issues, spatial policies, development strategies and measures will be realized through preparation of County and other lower-level plans.

Research was undertaken on various thematic areas to enrich the County specific issues and development strategies as well as policy guidelines and measures/ interventions. Further, preparation of the guidelines considered the constitutional, policy and legal provisions on physical and land use planning. Expert opinion was sought on the identified issues, policies, measures and strategies for implementation viability.

The preparation of the guidelines was identified as one of the implementation tools of the NSP, in which key NSP issues, policies, strategies and measures were translated into specific action plans, programs and projects at the County level.

1.8 Targeted Users of the Guidelines

Table 1 below indicates the targeted users of this guidelines and the application for each among other uses.

Table 1: Targeted Users of the Guidelines

User	Application
The County Executive Committee Member (CECM) in charge of Physical and Land Use Planning	<ul style="list-style-type: none"> ▪ Preparation of County and Lower-Level Plans ▪ Linkage of Planning Structures ▪ Quality control of the various County Plans ▪ Formulation of County Planning Policies and Strategies ▪ Establishment of the County Planning Institutions ▪ Coordination and Implement of the County Plans and Policies
The County Director of Physical and Land Use Planning	<ul style="list-style-type: none"> ▪ Advising the County Government on the impact of the County Specific Guidelines to the County ▪ Preparation of County Physical and Land Use Development Plans and other lower level plans ▪ Formulating County Physical and Land Use Planning Policies, Guidelines, Strategies and Standards ▪ Issuance of development permission and other development control instruments under The Physical and Land Use Planning Act, 2019

Licensed Physical and Land Use Planners both in public and private sectors	<ul style="list-style-type: none"> ▪ Prepare, coordinate and implement Spatial Plans ▪ Quality control of plans and consultancy services ▪ Formulation of policies, strategies and development guidelines ▪ Dispute resolution within the County
The County Assembly	<ul style="list-style-type: none"> ▪ Approval of planning budgets ▪ Vetting of various County Plans ▪ Formulation and passing of County Planning legislation ▪ Enhance capacity to oversee the executive on spatial planning
Ministries, Departments and Agencies (MDAs)	<ul style="list-style-type: none"> ▪ Mainstreaming relevant NSP policies, programs and projects ▪ Allocation of resources to priority areas, ▪ Strengthening linkages with spatial planning in resource management
The National Land Commission (NLC)	<ul style="list-style-type: none"> ▪ Oversight role in land use planning to ensure efficient implementation of the NSP ▪ Ensure relevant planning authorities carry out their functions as required by law
Practitioners in the built environment	<ul style="list-style-type: none"> ▪ Advancement of relevant policies, strategies, standards, guidelines, programs, and projects ▪ Apply processes, procedures and linkages of the NSP in their respective areas of practice
Community, Developers and Investors	<ul style="list-style-type: none"> ▪ Comprehend the processes, procedures and requirements of various County Plans and Policies ▪ Linkages of spatial planning and implementation ▪ Informed investment decisions
Development Partners	<ul style="list-style-type: none"> ▪ Reference frame for funding spatial planning activities ▪ Understand planning linkages and implementation ▪ Informed development decisions
Training Institutions	<ul style="list-style-type: none"> ▪ Compliment the curriculum for training of Spatial Planners ▪ Understand the planning procedures and processes

1.9 Key Principles

The following principles as indicated in the NSP shall guide and form the basis upon which the lower-level spatial plans shall be prepared; -

- 1. Effective Public participation/engagement:** All plans shall be prepared in a participatory and consultative manner with relevant stakeholders and sectoral actors.
- 2. Urban containment/Compact cities:** Local plans shall strive to limit and control urban growth within the set urban boundaries to protect rich

agricultural land, mitigate urban sprawl and reduce cost of infrastructural provision.

- 3. Livability:** The planning of urban areas shall enhance the livability index in the area of housing, environment, transportation, health, and social engagement. The urban areas must be economically viable, socially inclusive and ecologically sustainable.
- 4. Smart and green urban growth:** Plans shall promote sustainable use of energy, creation of green spaces, reduce the need for car travel, and promote use of local materials, support businesses, protection of heritage and creation of unique character.
- 5. Sustainable development:** Balancing social, economic and environmental dimensions of development and catering for current and future generations.
- 6. Promotion of ecological integrity:** Plans shall promote the protection and conservation of environmentally sensitive areas.
- 7. Promote public transportation:** Favor public transportation over private transport to ensure efficiency and functionality of urban places.
- 8. Balanced development:** Plans to ensure there/ is balanced development in the County to cure inequalities.

2 THE POLICY, LEGAL AND PLANNING FRAMEWORK OF THE GUIDELINES

2.1 Constitutional context

The formulation of these guidelines took into account the aspirations and principles of the Constitution of Kenya. Article 66 of the Constitution of Kenya gives the State powers to regulate use of any land and property in the interest of land use planning among others. The Fourth Schedule of the Constitution assigns the National Government the role of capacity building and technical assistance to the Counties. The guidelines are therefore within and in response to the aspirations, values and principles as provided for in the constitution.

2.2 Policy Context

2.2.1 The Sessional Paper No. 10 of 2012 on Kenya Vision 2030

Kenya Vision 2030 is the overarching national development framework which all plans should be aligned to. The preparation of all spatial plans should take cognizance of the aspirations, foundations and development concepts of the vision. The preparation of the first National Spatial Plan is identified in Kenya Vision 2030 as a flagship project and is regarded as one of the foundations for socio-economic transformation. Hence the need for linkage between National planning and County planning which can be achieved through mainstreaming NSPs into County Spatial Plans (CSPs) and other lower-level plans by preparing NSP County Specific Guidelines to implement the NSP at lower levels

2.2.2 Sessional Paper No. 1 of 2017 on the National Land Use Policy

The policy was formulated to address the various challenges related to land use and ensure efficient, productive and sustainable use of land. The main goal of the Policy is to provide legal, administrative, institutional and technological framework for optimal utilization and productivity of land related resources in a sustainable and desirable manner at National, County and Community levels

The policy recommends the preparation of a National Spatial Plan to provide an integrated framework for the development of the country including guidelines for sustainable rural and urban planning management. The policy also provides for the preparation of planning guidelines, policies and standards to be observed by County

Governments and other sectoral agencies within the frameworks of approved physical and land use development plans. These guidelines have been prepared on this basis and they are to be observed by counties in the implementation of the National Spatial Plan.

2.3 Legal Context

Several Acts of Parliament are in place to provide the legal framework for the implementation of Article 66 of the constitution. These include; The Physical and Land Use Planning Act of 2019, The Urban Areas and Cities Act of 2011, The County Government Act of 2012, The Land Act of 2012, The National Land Commission Act of 2012 among others. These NSP County specific guidelines are prepared in this context and meet this criterion.

2.3.1 The Physical and Land Use Planning Act, 2019

This is the overarching statute that provides for formulation of both National and County Physical and Land Use planning policies, guidelines and standards. The Act further provides for administration, types, content, process and approval of the various types of Physical and Land Use Development Plans

2.3.2 The County Governments Act, 2012

This statute mandates County Governments to carry out the planning function at the County level. The guidelines enhance the capacity to prepare the various County level plans that meet the recommended quality and standards

2.3.3 The Urban Areas and Cities (Amendment) Act, 2019

The statute provides for classification of urban areas and cities, their governance and management, and for integrated development planning. The guidelines are a basis for preparation of these lower-level plans

2.3.4 The Environmental Management and Coordination (Amendment) Act, 2015

The Act provides for the establishment of an appropriate legal and institutional framework for the management of the environment as well as guidelines relating to

environmental management and prevention or abatement of environmental degradation. The guidelines take cognizance of this Act and will be implemented within its framework

2.3.5 The National Land Commission Act, 2012

The Act mandates the National Land Commission with the management and administration of public land on behalf of the National and County Government, and to monitor and oversight physical and land use planning in the country. The guidelines fall within the ambit of this statute and will facilitate their oversight responsibilities.

2.4 The Planning Context

2.4.1 The National Spatial Plan (NSP)

The National Spatial Plan (NSP) covers the whole country encompassing the forty-seven (47) Counties and the Exclusive Economic Zone. The NSP outlines policies and strategies as indicated in Figure 2 below, geared towards influencing desired future distribution and organization of population and activities outlined in Vision 2030 and Sectoral Policies and Plans. It aims at achieving economic efficiency and balanced development. The various County Spatial Plans should be aligned to the policies outlined in the NSP and as demonstrated in figure 2 below.

Figure 2: Policy Focus of the NSP



Source: National Spatial Plan, 2015-2045

To actualize the NSP a comprehensive implementation strategy has been proposed that embraces a multiplicity of actors including National Government Ministries, Departments and Agencies (MDAs), County Governments and the National Land Commission. The strategy proposes the establishment of the following institutions as key in the implementation of the Plan; The National Physical Planning Council, the National Technical Committee and the County Physical Planning Committee

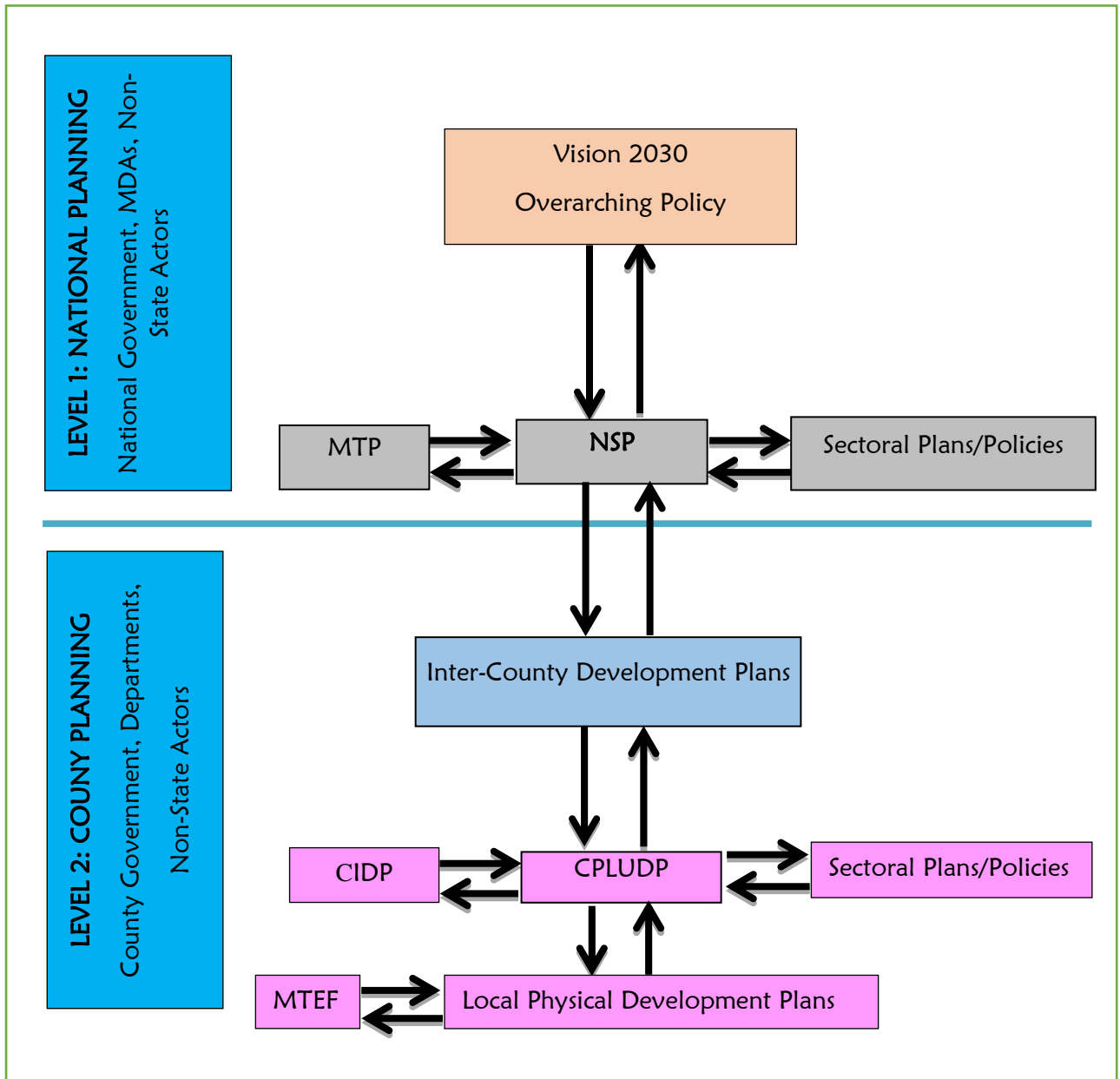
2.4.2 NSP linkage to Other Plans

The linkage of the National Spatial Plan (NSP) to county and other lower-level plans is key to realization of its aspirations and the successful actualization of these plans. The NSP provides a spatial framework to ground the Vision 2030 flagships projects and form a basis for coordination of County policies, strategies, measures and plans. Inter County and County plans take into considerations the policies, measures and strategies of the NSP and implements them actualizing its aspirations.

County Physical and Land Use Development Plans provide a framework where the CIDP draws its programs and projects. The implementation of the CIDP in turn leads

to realization of the objectives of the County Physical and Land Use Development Plan. The graphic below illustrates the country's planning Linkage.

Figure 3: Linkage of the National Spatial Plan to Other Plans



Source: The National Spatial Plan, 2015-2045

3 COUNTY PROFILE

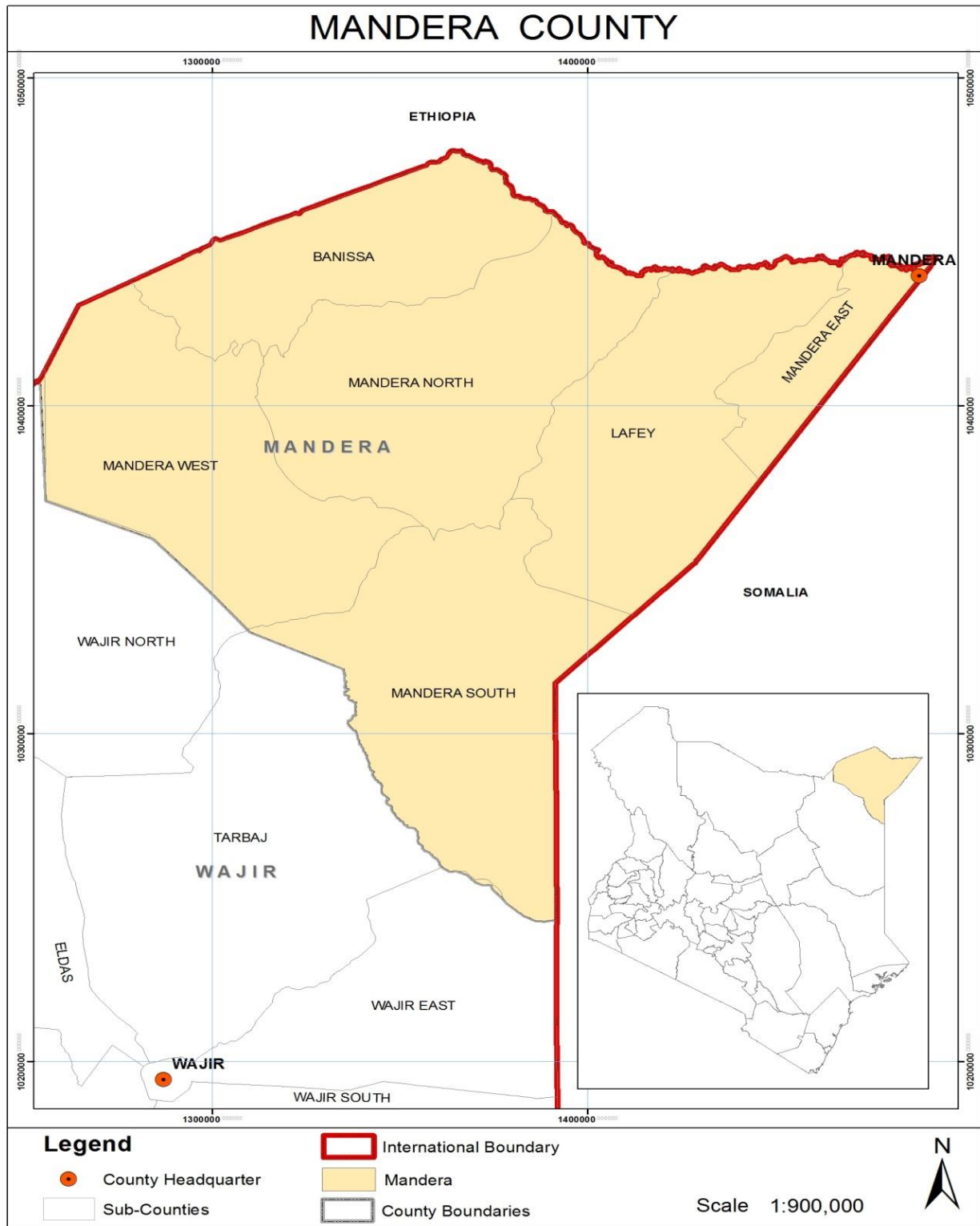
3.1 Overview

This chapter presents the locational, bio-physical and socio-economic perspectives and trends of the County that informed the preparation of the strategies, policies and measures that form the National Spatial Plan County-Specific Guidelines for Mandera County. It looks at the comparative advantage of Mandera County as compared to the other Counties of Kenya

3.2 Location Context

Mandera County is located in the North Eastern part of Kenya. It borders Ethiopia to the North, Somalia Republic to the East and Wajir County to the South-West. The County lies between latitudes 20^o 11` North, 40^o 17` North and longitudes 39^o 47` East, 41^o 4.8` East as indicated in Map 1 below. It covers an area of 25,991.5km². The County is subdivided into six sub counties namely Mandera West, Mandera South, Banissa, Mandera North, Mandera East and Lafey, which are further sub divided into 30 administrative wards. This is as indicated in Map 1 below.

Map 1: Location of Mandera County



Source: State Department for Physical Planning, 2022

3.3 Bio-Physical Context

The County is characterized by low lying rocky hills (such as Mlima Fisi Hill) located on the plains that rise gradually from 400 meters above sea level in the south at Elwak to 970 meters above sea level on the border with Ethiopia. The rest of topography is low lying, characterized by dense vegetation with thorny shrubs of savannah type. There are no lakes, swamps or dams but earth pans are common in the County.

River Daa whose source is the Ethiopian highlands flows eastwards along the County's boundary with Ethiopia and through Malkamari, Rhamu Dimtu, Rhamu, Libehia, Khalalio and Township wards into Somalia at Border Point One.

The County falls within ecological zone V-VI (arid and semi-arid) and receives an average rainfall of 255mm per year. Rainfall is scanty and unpredictable with two rainy seasons, the short rains from October to December and the long rains from March to May. Temperatures are relatively very high with a minimum of 24°C in July and a maximum of 42°C in February.

3.4 Socio-Economic Background

Demography; The population of Mandera County was estimated at 867,420 (50.14% men and 49.85% women) – KNBS 2019. The population is expected to rise to 1,095,033 in the year 2025 and 2,380,964 in the year 2045 as indicated in the projection table 2 below:

Table 2: Mandera County Population Projections

YEAR	2019		2020		2025		2030		2035		2040		2045	
Population size	867,420		901,770		1,095,033		1,329,715		1,614,693		1,960,746		2,380,964	
	<i>M</i>	<i>F</i>	<i>M</i>	<i>F</i>	<i>M</i>	<i>F</i>	<i>M</i>	<i>F</i>	<i>M</i>	<i>F</i>	<i>M</i>	<i>F</i>	<i>M</i>	<i>F</i>
	434,976	432,444	45	441	558	536	678	651	823	791	999	960	1,21	1,16
			9,903	,867	,467	,566	,155	,560	,493	,200	,980	,766	4,292	6,672
Households	125,713		130,691		158,700		192,712		234,013		284,166		345,067	
Area	25940		25940		25940		25940		25940		25940		25940	
Density	33		35		42		51		62		76		92	

Source: State Department for Physical Planning, 2022

Economic Activities; The main economic activity in the County is livestock farming. Crop and horticulture farming is practiced in the irrigation belt of Mandera East, Lafey and Banisa as well as in the agro-pastoral zones of Mandera West and the hinterlands of Lafey, Mandera North and Mandera South. Apiculture is practiced in Banisa and Mandera West sub-counties.

Quarrying and sand-harvesting are the main mining activities ongoing in the County. The County is endowed with natural resources, including oil, gold, coal and precious stones. Deposits of limestone, from which cement can be manufactured were identified in Elwak and Rhamu towns.

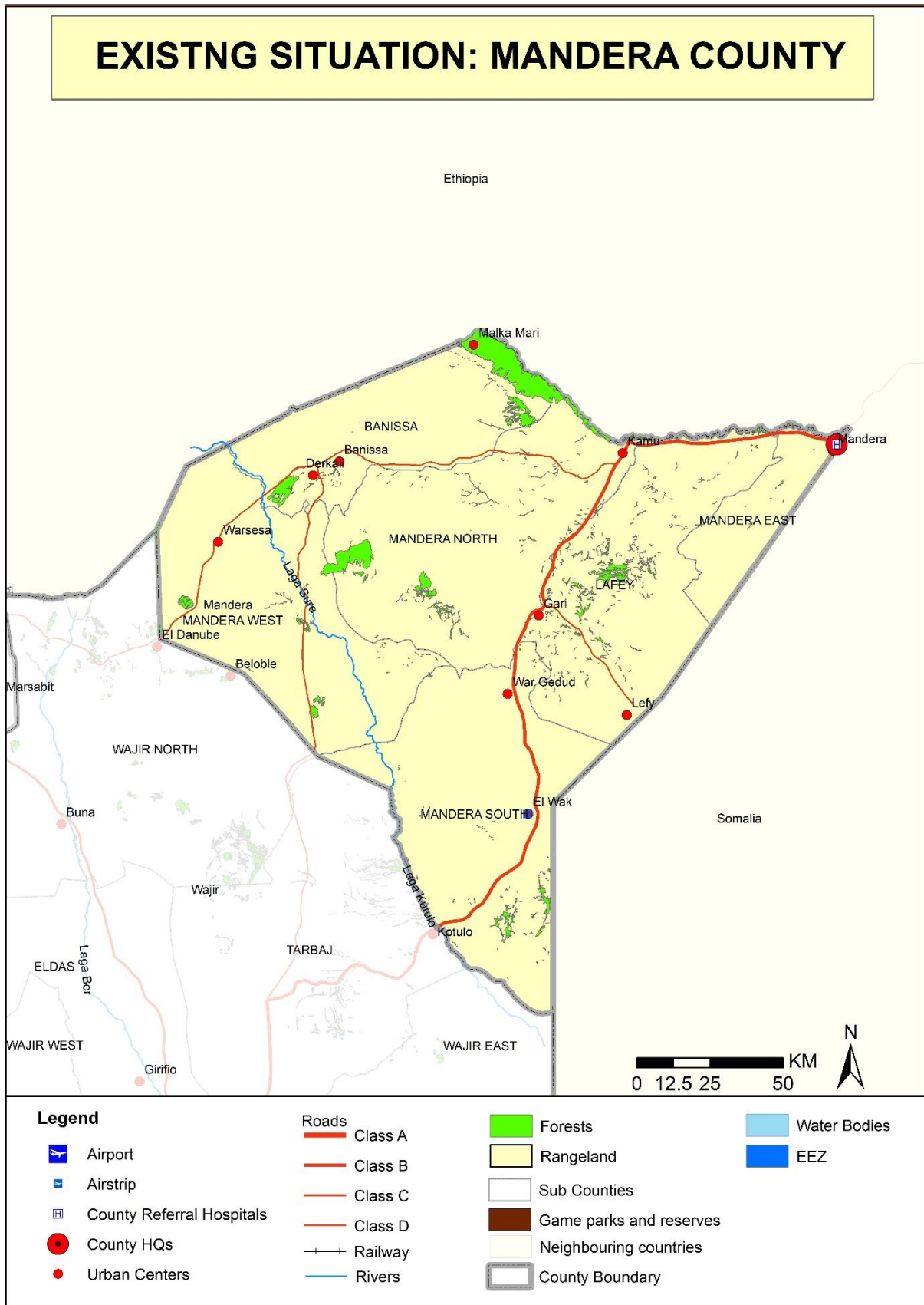
Infrastructure; The existing physical and social infrastructure in the County includes road network, airstrips, energy access, housing, educational facilities, health facilities, communication and technologies such as the post offices, mobile telephone connections, landline telephones, fibre optic cable connection, radio and television. The County is served by four (4) functional airstrips in Rhamu, Elwak, Mandera and Takaba. There are other four (4) non serviceable airstrips in Malkamari, Arabia, Banissa and Lafey.

Mandera East, Mandera North, Mandera South and Mandera West constituency headquarters have electricity supply. There is potential to develop a green and sustainable energy supply within the County by exploiting solar, wind, biofuel and coal petroleum.

The existing situation of Mandera County is indicated in Map 2 below:



Map 2: The Existing Situation



Source: State Department for Physical Planning, 2022

3.5 County's Comparative Advantage

a) Industrial potential

There is a proposed world class abattoir in Mandera for meat processing for local, national and markets. The other proposed industrial and value addition activities include cottage industries, juice processing factories, tannery for leather products, maize milling, quarry mining and stone crushing factory in Mandera and Rhamu towns.

b) Agricultural potential

Mandera County has irrigation potential along River Daua and in the irrigation belt of Mandera East, Lafey and Banisa.

c) Border Town

Mandera is one of the designated border towns that needs to be planned and provided with the requisite infrastructure and services to make them more functional as border towns. This will lead to promotion of regional integration and cross border trade.

d) Existence of Airstrips

The County has four functional airstrips in Mandera, Rhamu, Elwak and Takaba. However, there are four non-functional airstrips in Malkamari, Arabia, Banisa and Lafey. The airstrips should be upgraded, rehabilitated and maintained to national and international status.

4 DEVELOPMENT STRATEGIES, POLICY GUIDELINES AND MEASURES FOR MANDERA COUNTY

4.1 County Specific Issues and Development Strategies

The National Spatial Plan provides strategies for spatial growth and development across the country. The strategies are aimed at providing a spatial expression to Kenya Vision 2030 and other sector policies.

This section seeks to provide strategies for spatial growth and development of the County by addressing the factors that prevent the County from achieving the intended goals and objectives. The development strategies discussed are aimed at managing the global impacts, optimizing use of natural resources, creating a County balance and transforming rural areas.

The following are detailed NSP County-Specific issues and development strategies that apply to Mandera County.

Table 3: County Specific Issues and Development Strategies

Strategy 1: Enhancing National Competitiveness		
Opportunities	Constraints	Strategies
<ul style="list-style-type: none"> ✓ Border town of Mandera ✓ Mandera proposed as part of Wajir-Garissa-Mandera metropolitan region ✓ Tourism - Malkamari National Park ✓ National Trunk Road linking Elwak – Rhamu - Mandera Road to the extreme northeast, near the tri-point where the borders, Kenya Ethiopia and Somalia meet ✓ Existence of four airstrips in Mandera, Rhamu, Elwak and Takaba 	<ul style="list-style-type: none"> ✓ Insecurity along the border (international and local) ✓ Clan and tribal conflicts between the Gurreh and Murulle ✓ Inefficient urban transport systems ✓ Poor transport linkage between urban and rural areas ✓ Underutilization of the airstrips 	<ul style="list-style-type: none"> ✓ Promotion of peace, security and preventing violent extremism values and good governance. ✓ Establish and strengthen cross-border peace structures ✓ Promote and enhance alternative dispute resolution (ADR) mechanisms ✓ Provision of transport infrastructure to link urban and rural areas ✓ Improve and expand the existing airstrips ✓ Enforce development control measures within and around airstrips

Strategy 2: Optimizing Land and Natural Resources		
Opportunities	Constraints	Strategies
Land and Land Use		
<ul style="list-style-type: none"> ✓ Abundant land resource for development 	<ul style="list-style-type: none"> ✓ Skewed development patterns ✓ Unsustainable land use practices 	<ul style="list-style-type: none"> ✓ Formulate policies to tap the capability and potentials of the county and to leverage on the economies of pastoralism
Agriculture (Agro climatic zones IV, V and VI)		
<ul style="list-style-type: none"> ✓ Ability to support large scale livestock farming ✓ Irrigation potential along River Daua ✓ Apiculture, aquaculture and river-line fishing potential along River Daua 	<ul style="list-style-type: none"> ✓ Overstocking ✓ Droughts leading to low livestock productivity and mortality ✓ Cattle rustling and banditry ✓ Increase in pressure on grazing land ✓ Competition for grazing land and water sources ✓ Poor agricultural/irrigation support infrastructure ✓ Use of inappropriate farm inputs and technology ✓ Unreliable and poorly distributed rainfall pattern ✓ Low value addition to agricultural produce ✓ Lack of adequate equipment and technology to tap fishing potential. 	<ul style="list-style-type: none"> ✓ Establish land carrying capacity for livestock ✓ Encourage communal ranching to replace pastoralism ✓ Provide incentives and subsidies to farmers to enable them access appropriate inputs and technology ✓ Exploit underground water potential, rain water harvesting and harness the existing surface water ✓ Encourage dry land farming methods and plant drought resistant crops ✓ Establish agro-based industries ✓ Improve transport infrastructure in agricultural areas ✓ Provide subsidies on fishing equipment and undertake research on best fishing practices
Environment (Conservation Area & Protection Area)		

<ul style="list-style-type: none"> ✓ Large scale livestock production ✓ Diverse biodiversity ✓ Pockets of ungazetted forests in parts of Mandera North, Mandera West and Banissa sub counties ✓ Malkamari National Park and Conservancy in Dandu, Takaba and Arabia 	<ul style="list-style-type: none"> ✓ Soil erosion caused by overstocking and strong winds ✓ Loss of wetland ecosystems ✓ Indiscriminate cutting of trees, logging and charcoal burning ✓ Effects of climate change ✓ Encroachment by human settlements and activities ✓ Human wildlife conflicts 	<ul style="list-style-type: none"> ✓ Strict soil erosion control measures ✓ Commercialization of livestock keeping ✓ Provide requisite livestock infrastructure e.g., abattoirs, markets ✓ Encourage and adopt modern ranching methods ✓ Sensitize the public in matters of carrying capacity ✓ Conservation and protection of environmentally fragile/ sensitive areas ✓ Conservation, protection and rehabilitation of wetlands and water catchment areas ✓ Rehabilitation of degraded sites through increasing forest cover ✓ Facilitate management, conservation & utilization of forest & forestry resource products ✓ Develop Disaster Management Plans ✓ Formulation and enforcement of environmental policies and regulations
Natural resources		
<ul style="list-style-type: none"> ✓ Endowed with lots of mineral resources including, gums and resins, forest, gold, limestone, gypsum, oil and gas reserves ✓ Favorable wind speeds to support green energy 	<ul style="list-style-type: none"> ✓ Inadequate geological information on the existence of the minerals and their commercial viability ✓ Inadequate technology and exploitation infrastructure ✓ High costs of exploiting available natural resources 	<ul style="list-style-type: none"> ✓ Optimal utilization of the available resource potential ✓ Invest in appropriate technology and infrastructure ✓ Undertake further exploration of the available resources ✓ Develop a framework to guide and regulate the exploitation and use of potential green energy
Industrial		
<ul style="list-style-type: none"> ✓ The County is endowed with abundant minerals – iron ore, gold, gypsum, oil and natural gas ✓ Huge potential for livestock product-based industries 	<ul style="list-style-type: none"> ✓ Lack of information on potential mining opportunities ✓ High cost of mineral exploration ✓ Low adoption of technology for value addition ✓ Lack of manufacturing industries for 	<ul style="list-style-type: none"> ✓ Need for carrying out geological surveys to establish true quantity of mineral deposits ✓ Diversify energy production sources to reduce costs of production and enhance its reliability ✓ Provide and invest in appropriate technology and

	livestock products ✓ Poor linkage to the markets ✓ Weak cooperatives that deal with processing of camel milk	infrastructure to enhance value addition; ✓ Promote the formation of cooperatives and SACCOs to advance marketing
Tourism		
✓ Diverse range of natural, social, human and physical resources which include wildlife for safari tourism, scenic and adventure tourism and cultural tourism - Malkamari National Park	✓ Human-human and human-wildlife conflicts ✓ Encroachment of human activities into the parks ✓ Untapped tourism potential ✓ Poor/inadequate transport and infrastructural facilities ✓ Weak integration of ICT in the development and management of the tourism value chain	✓ Mapping out of wildlife migratory corridors ✓ Exploit tourism potential ✓ Increase conservation of natural and cultural Heritage ✓ Provide appropriate infrastructure to link the county to other circuits ✓ Invest in ICT infrastructure and capitalize on online marketing
Transport		
✓ Implementation of the LAPSET corridor ✓ Rapid urbanization ✓ Increased trade and investments ✓ Opening up of the underdeveloped land ✓ Availability of livestock products to be transported to the markets ✓ Existence of airstrips located in all sub-counties	✓ Poor condition of roads ✓ Missing transportation links ✓ Lack of integration of the transport system ✓ Lack of Non-Motorized and Intermediate Means of Transport (NMIMT) ✓ Poor condition the existing airstrips	✓ Upgrade National Trunk B9 Road linking Elwak-Rhamu–Mandera, Mandera to Isiolo and Mandera to Wajir roads ✓ Create linkages to agricultural, tourist and urban areas ✓ Expand and upgrade road transport network to cover all sub-counties ✓ Integrate transport corridor planning ✓ Formulate regulations and guidelines to control development along transport corridors ✓ Improve and expand the existing airstrips ✓ Enforce development control measures within and around airstrips
Public Utilities		
Water and Sanitation		

<ul style="list-style-type: none"> ✓ Surface (River Daua) and ground water potential ✓ Financial and technical support from the government and non-governmental organizations in provision of water and sanitation facilities 	<ul style="list-style-type: none"> ✓ Inadequate information on ground water potential and high cost of exploration ✓ Inadequate accessibility to portable water points ✓ Inadequate sanitation facilities in urban and rural areas ✓ Prevalence of water-borne diseases 	<ul style="list-style-type: none"> ✓ Exploit underground water to increase water supply ✓ Expansion of existing water supplies in the County ✓ Investments in water harvesting technologies and storage facilities ✓ Appropriate sanitation infrastructure including collection, disposal and treatment system be developed in all urban areas
Solid waste management		
Urbanization – providing economies of scale	<ul style="list-style-type: none"> ✓ Non-existing dumping site ✓ Inadequate waste collection points ✓ Undesignated waste dumping sites 	<ul style="list-style-type: none"> ✓ Provide solid waste management facilities ✓ Promote re-use and recycling guidelines ✓ Encourage public private partnerships investment in solid waste management
ICT		
<ul style="list-style-type: none"> ✓ Laying of fiber optic network by National Optic Fibre Backbone Infrastructure (NOFBI) (through Wajir to Mandera) ✓ Increased demand in technological services 	<ul style="list-style-type: none"> ✓ Disparity in access to internet services 	<ul style="list-style-type: none"> ✓ Expand the fiber optic network to all urban areas to increase the coverage and data connectivity and increase access to rural populations ✓ Mainstream ICT in all sectors to promote service delivery

Strategy 3: Promoting Balanced Intra-County Development		
Opportunities	Constraints	Strategies
<ul style="list-style-type: none"> ✓ Existing resources - National Park, minerals, green energy ✓ Range land region with high potential for large scale livestock keeping ✓ Classified as a medium potential region due to its high potential for 	<ul style="list-style-type: none"> ✓ Under-exploitation of the natural resource potential ✓ Inadequate provision and access to infrastructural facilities and services ✓ Food and nutrition insecurity 	<ul style="list-style-type: none"> ✓ Encourage equitable exploitation and sound management of resources while ensuring local participation for improved economic development ✓ Promote industrialization and value addition through provision of adequate requisite infrastructure ✓ Promote irrigation activities for improved productivity in

<p>agriculture through irrigation and livestock keeping.</p> <ul style="list-style-type: none"> ✓ Potential for tourism 	<ul style="list-style-type: none"> ✓ Insecurity ✓ Under exploitation of the tourism potential 	<p>quantity and quality of yields</p> <ul style="list-style-type: none"> ✓ Establish and strengthen cross-border peace structures ✓ Promote investment in sustainable tourism including eco-tourism
--	---	---

Strategy 4: Promoting Rural Development		
Opportunities	Constraints	Strategies
<ul style="list-style-type: none"> ✓ Endowment of resources e.g., minerals, tourism, livestock production 	<ul style="list-style-type: none"> ✓ Under exploitation of resources ✓ Weak rural-urban linkages ✓ Inefficient and dilapidated infrastructure facilities and services ✓ Slow adoption of technology and innovation ✓ Low productivity 	<ul style="list-style-type: none"> ✓ Provide a spatial framework for harnessing natural resources ✓ Develop appropriate transport and infrastructural facilities and services to support the exploitation of the natural resources in the area as well as the opportunities they present to spur economic development ✓ Promote rural industrialization which includes, rural tourism, mining and agro-based industries ✓ Promote commercial and large-scale livestock production practices in the rural areas ✓ Enhance the ASALs climate change adaptation and desertification mitigation ✓ Promote sustainable land uses that are capable of meeting the rangeland needs and guaranteeing secure livelihoods, economic and social growth
Strategy 5: Urbanization		
Opportunities	Constraints	Strategies
<ul style="list-style-type: none"> ✓ Presence of Elwak as a border town to promote regional integration and cross border trade ✓ Improvement of the National Trunk B9 Road linking Elwak – Rhamu - Mandera Road to a superhighway is 	<ul style="list-style-type: none"> ✓ Dispersal of urban centers hindering the area not to positively benefit from urbanization ✓ Ribbon development ✓ Inefficient solid waste management services 	<ul style="list-style-type: none"> ✓ Promote the development of centers as per their potential and population (local, market, rural, urban and growth centers) ✓ Create an enabling environment for commercial and industrial developers to activate potential development within the urban areas ✓ Provide alternative areas for development of urban centers by provision of services and infrastructure closer to the rural areas

expected to spur growth of urban centers		thus urban containment and stimulation of rural growth ✓ Strengthen urban-rural linkages through provision of integrated transportation and communication
--	--	--

DRAFT

4.2 National Spatial Plan Policy Guidelines for Mandera County

The National Spatial Plan has stipulated policies to provide a foundation upon which to anchor the strategies enumerated therein. The primary aim is to inculcate discipline in the use of land and natural resources of the country thus stemming duplication and wastage of the resources.

This section seeks to provide the spatial policy guidelines and measures aimed at promoting the achievements of the objectives of the National Spatial Plan using its guidelines. These policies are supported by a wide range of measures which spell out the specific actions to be undertaken to actualize the policy intentions. The policies shall be implemented by the County Government's agencies responsible for land use planning and development control as well as the authorities responsible for land administration.

The following are the policies and measures specific to Mandera County

Table 4: NSP Policy Guidelines for the County

No	Thematic Area	Policy Guidelines	Measures
1)	Resource Potential Regions <ul style="list-style-type: none"> • Large scale livestock production • Irrigation Agricultural potential • Urban Centres (<i>Mandera, Elwak, Rhamu, Takaba</i>) • Existing resources (<i>Daua River, Malkamari National Park, mineral resources</i>) 	<ul style="list-style-type: none"> • Enhance irrigation agriculture and livestock production and value addition • Increased investment in social and physical infrastructure • Sustainable use and exploration of natural resources • Environmental conservation 	<ul style="list-style-type: none"> • Encourage the transformation from traditional crop farming and livestock keeping methods to modern practices • Rural development through provision of infrastructure, agricultural sector development and related economic activities • Development of small and medium towns • Development and rehabilitation of key infrastructure in underserved locations • Conservation of the environment, wildlife and forest resources • Conservation of underground water resources • Mineral mapping and exploitation • Construction of key infrastructure to support resource exploitation and value addition initiatives • Development of tourism infrastructure
2)	County Spatial Structure	<ul style="list-style-type: none"> • Utilise the National Spatial Plan (NSP) as the guiding framework to achieve integrated and sustainable spatial development • NSP as a basis for preparation of lower tier physical and land use development plans 	<ul style="list-style-type: none"> • Align Spatial/Physical Plans to conform to the objectives and policies of the NSP • 5-year review of medium term Physical and Land Use Plans shall take into account provisions of the NSP • Sectoral policies to take cognizance of objectives and policies of NSP • Provide planning authorities with adequate human, financial and technical resources
3)	Enhancing National	The selective concentration concept shall be adopted for the planning and location or	<ul style="list-style-type: none"> • Concentrate urban based economic activities in selected urban areas to spur economic development and to exploit the natural resource endowments

	Competitiveness	urban based economic activities in the county to leverage on national competitiveness	<ul style="list-style-type: none"> • Prioritization of the preparation of Physical and Land Use Development Plans to guide development in the selected county growth areas
		Plan the major urban areas and provide them with appropriate infrastructure to enhance efficiency and quality of life	<ul style="list-style-type: none"> • Enhance the Livability Index for urban areas by providing quality and affordable housing, efficient public transportation, improving neighborhood characteristics, conserve and improve the quality of the environment, quality healthcare and create job opportunities • Enhance road coverage and connectivity to cover the whole county • Improve the road infrastructure by providing for modal split, linkages and interchanges • Provide appropriate trunk infrastructure in the form of reliable energy, water, sanitation and ICT
		Land and natural resources shall be utilized optimally and sustainably	<ul style="list-style-type: none"> • Encourage the transformation from traditional farming and livestock keeping methods to modern practices • Identify, map and develop the tourism potential within the county as part of the northern circuit • Explore and exploit the mineral, energy and water potentials • Provide transportation networks and other infrastructure necessary to support exploitation of the existing resources • Support development of secondary urban centers to catalyze development

4)	Modernizing Agriculture	Rangelands shall be developed and used optimally for large scale commercial production of livestock to support downstream processing of livestock products and promote balanced regional development	<ul style="list-style-type: none"> • Prepare Physical and Land Use Development Plans to guide and promote the development of large-scale livestock productions • Prioritize provision of requisite infrastructure (water pans, dams, cold storage facilities and laboratories) to support ranching • Modernize livestock keeping through appropriate animal husbandry (high-yielding breeds, extension services and research and disease control), product processing and timely marketing • Appropriate rangelands management practices shall be adopted including observance of carrying capacity, conservation of the natural vegetation and adaptation and mitigation against climate change and its impacts • Early warning systems, prompt response and recovery systems shall be taken to cushion the county and make it more resilient to the perennial drought cycles
		Optimize potential by promoting investment in irrigation agriculture for high value crops	<ul style="list-style-type: none"> • Research on high potential irrigation areas in the county • Rehabilitate and operationalize existing irrigation schemes and establish new irrigation schemes in the identified potential areas • Encourage small holders' irrigation schemes through sensitization campaigns and reduction of capital costs for investments
5)	Diversifying Tourism (Northern circuit)	Protect and conserve tourist attraction sites	<ul style="list-style-type: none"> • Identify, map and protect all wildlife migratory corridors • Prohibit the location of incompatible land use activities • Strictly regulate developments within the tourist attraction sites • Protect wildlife watering points
		Governance of tourism shall be enhanced	<ul style="list-style-type: none"> • Identify, map and develop the tourism potential within the county as part of the northern circuit • Identify and map potential eco-tourism development sites • Undertake awareness campaigns on the value of eco-tourism to the industry players • Develop guidelines for eco-tourism establishments • Facilitate access to eco-tourism development incentives

		Enhance diversification of tourism products	<ul style="list-style-type: none"> Plan and develop the Northern circuit to offer eco-tourism, ecology/study tourism, sports, cultural and heritage tourism, medical tourism, conference tourism exhibition and agro-tourism
		Provide appropriate tourism infrastructure and facilities	<ul style="list-style-type: none"> Carry out an inventory of tourism infrastructure and facilities in the Northern Circuit Develop the requisite tourism support infrastructure and facilities Upgrade the existing tourism facilities and infrastructure Provide and upgrade the ICT infrastructure to support tourism
6)	Managing Human Settlements	Upgrading the existing settlements and forestalling of new informal settlements	<ul style="list-style-type: none"> Encourage redistribution of urban income through integrated development planning encompassing social, economic and physical factors Ease the process of issuance of ownership documents to the legal owners in order to encourage formal developments Enforce development control regulations and adherence to building code and standards. Encourage use of readily available local material and technology in housing development
		Improve the management and governance of human settlements particularly in the urban centers	<ul style="list-style-type: none"> Establish and build institutional capacities of the urban areas management boards Integrate technology in management of human settlements to strengthen urban data systems Coordinate and strengthen development control mechanisms Provide adequate human resource and improve their capacity in management of human settlements in the sectors of; housing, settlement, land, infrastructure, construction, energy and disaster management Conduct research into migration trends to inform effective planning and provision of human settlements Enable public private partnerships in the provision of housing
		Manage and control peri-urban development to contain urban growth within	<ul style="list-style-type: none"> Create green belt buffer zones to define the urban and peri-urban areas Implement and enforce policies and legislations on urban containment, densification, peri-urban planning and management

		its limits and protect rural land uses	
		Develop human settlements in line with environmental and natural resources conservation to improve living standards	<ul style="list-style-type: none"> • Map out and prohibit development in environmental sensitive areas • Plan and provide an integrated waste management system • Prepare and implement zoning guidelines to ensure compatibility of land uses in human settlement areas • Promote social organization and environmental awareness through the participation of local communities in the identification of public service needs • Strengthen the capacity of the local governing bodies to effectively deal with environmental challenges associated with rapid and sound urban growth • Empower community groups, non-governmental organizations and individuals to assume responsibility and authority for managing and enhancing their environment • Provide adequate and functional open spaces in urban places • Prescribe planning standards for open/green space on private development • Aim for zero carbon building standards and ensure all buildings meet energy efficiency criteria
7)	Conserving the Natural Environment	All environmentally sensitive areas shall be protected and utilized in a sustainable manner	<ul style="list-style-type: none"> • Promote integrated natural resource management • Ensure application of Integrated Water Resources Management (IWRM) • Promote efficient adaptation measures for productive and sustainable resource management • Involve and empower communities in the management of ASAL ecosystems and promote environmental education and awareness • Gazette and manage emergency drought reserve areas and encourage

			<p>the development of buffer areas of crop and forage production as part of contingency planning</p> <ul style="list-style-type: none"> • Mainstream climate foresight and climate adaptation into planning at all levels by strengthening the climate resilience of communities and promoting sustainable livelihoods • Explore opportunities and develop appropriate mechanisms through which communities can benefit from bio-carbon initiatives • Protect and increase forest cover, riverine vegetation, critical water catchment areas and special ecosystems
		Mainstream community participation in the protection and conservation of natural resources	<ul style="list-style-type: none"> • Sensitize communities living around the natural resources on the need for conservation of the resources • Develop mechanisms for sharing benefits accruing from the natural resources by the conservation agencies in consultation with the local communities • Identify and map all disaster-prone areas for sustainable management.
8)	Integrated Transportation Network	Develop an integrated and functional transport system for the urban areas	<p>Air Transport:</p> <ul style="list-style-type: none"> • Upgrade the existing airstrips to support tourism and value addition for agricultural and livestock products in the County <p>Road Transport:</p> <ul style="list-style-type: none"> • Provide access and linkage between county and sub-county's headquarters and for local access and link them to national transportation corridors • Expand all roads connecting county headquarters to sub-county headquarters to at least 30m and developed to bitumen standard • Develop roads connecting infrastructure installations of county and national importance and resource areas to bitumen standard

		Environmental conservation shall be upheld in the planning, development and management of the transportation network	<ul style="list-style-type: none"> • Construction and management of the transport network to abide by environmental regulations and standards • Promote the use of green energy in all transportation systems
9)	Providing Appropriate Infrastructure	Provide safe, adequate, reliable and affordable electricity for both urban and rural settlements	<ul style="list-style-type: none"> • Mainstream and enforce green energy options in the design of buildings • Explore alternative options of power generation such as wind and solar energy. • Build local capacities in the energy sector
		Promote expansion and improvement of water reticulation systems to facilitate the access to clean, safe, adequate, reliable and affordable water in human settlements	<ul style="list-style-type: none"> • Construct and rehabilitate water supply systems including water kiosks, yard taps and pipelines in the County • Incorporate water provision in all physical and land use development plans • Rehabilitate and protect water sources • Improve connectivity and water supplies in the major urban areas mainly Mandera, Elwak, Rhamu, Takaba • Construct and rehabilitate rural water schemes and drill boreholes to supplement water supply
		Establish a network of functional, efficient, safe, accessible and sustainable health referral infrastructure	<ul style="list-style-type: none"> • Increase the utilization of services at lower levels of the health services • Develop service provider capacity to offer services and appropriately refer at each level of the healthcare system • Improve preparedness and response to emergencies and disasters • Establish fully fledged low-cost diagnostic centers and provide adequate screening and treatment facilities for persons with chronic or terminal conditions, including cancer, diabetes and kidney failure • Modernization of infrastructure and hospital equipment
		Promote appropriate, quality, efficient and cost-effective ICT infrastructure in both rural and urban areas	<ul style="list-style-type: none"> • Develop and upgrade ICT Infrastructure in the County Extend ICT infrastructure to cover all the rural and local growth centers • Mainstream use of ICT in all levels of government and the private sector (e-government)

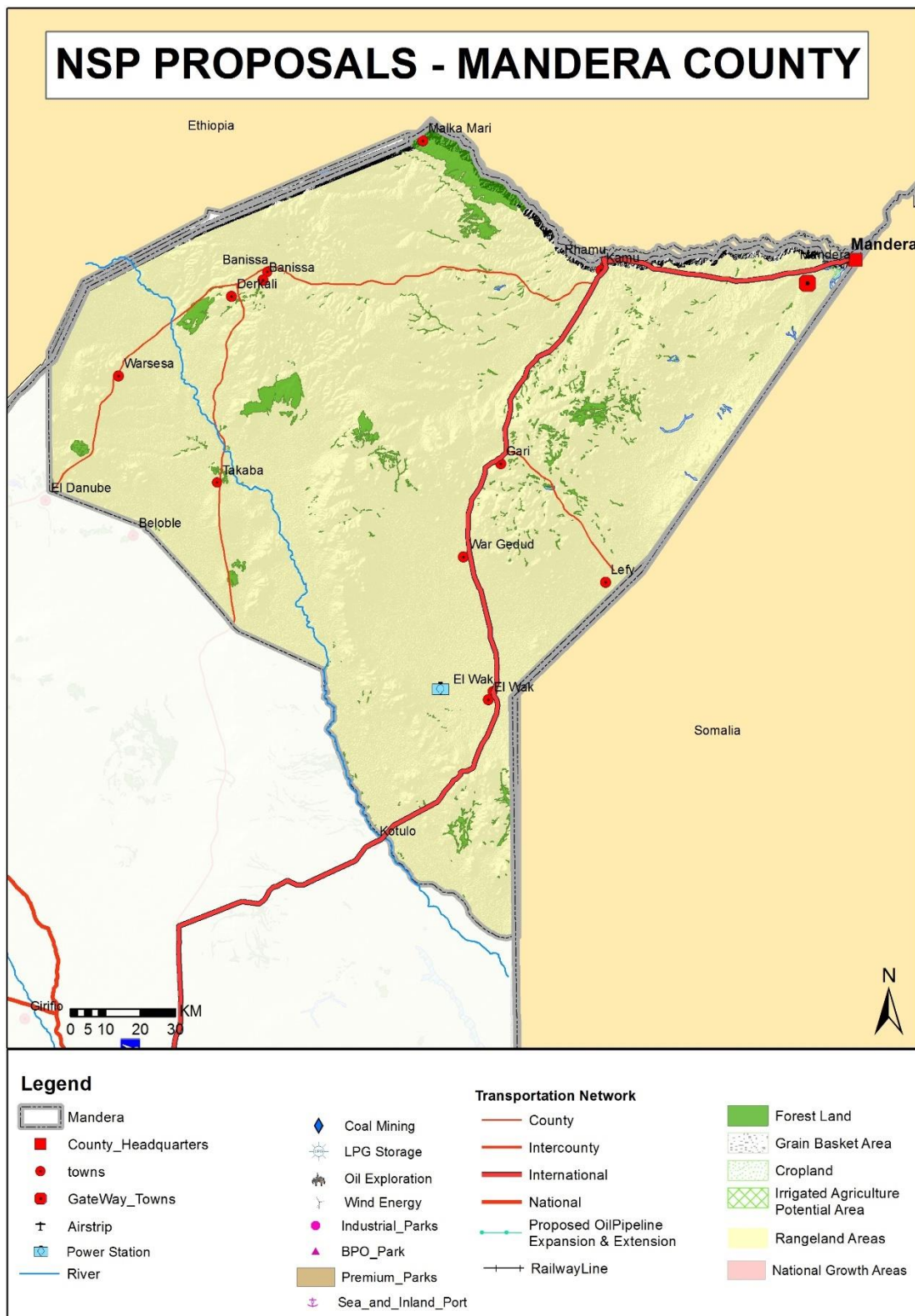
		<p>Promote expansion of sewerage systems and waste management facilities to improve sanitation in human settlements</p>	<ul style="list-style-type: none"> • Service all urban settlements by a centralized sewerage treatment system and solid waste disposal facilities • Expand the sewerage coverage and capacity for the major urban centers of Mandera, Elwak, Rhamu and Takaba • Apply appropriate technology solutions to sewerage treatment in rural and low-density housing areas • All physical and land use plans to make provision for development of sewer systems, treatment works and solid waste disposal sites • Expansion of urban boundaries to be guided by investment in infrastructural services • Enactment of laws at the County level to incorporate private public partnerships in infrastructure investments • Adopt appropriate technology to facilitate reduction, recycle and reuse of waste (3R's) • Undertake rehabilitation of storm water drainage systems in all urban areas
		<p>Plan, develop, maintain sporting infrastructure and rehabilitate the existing, to promote sports development</p>	<ul style="list-style-type: none"> • Establish a County Sports Talent Center to scout, tap, nurture and develop sports talents
		<p>Identify and plan specific sites for industrial development and service them with the appropriate infrastructure</p>	<ul style="list-style-type: none"> • Plan and set aside land for industrial development in the County • Promote development of SMEs and designate land and plan for Industrial Parks in the County • Integrate the industrialization process and environment conservation • Provide an integrated, efficient, reliable and sustainable transport infrastructure • Increase availability of clean water and improve Sanitation

10)	Promoting Rapid Industrialization	Provide adequate and affordable energy supply for the industrial sector	<ul style="list-style-type: none"> • Adopt renewable energy generation programs by provision of incentives and enforcement of building laws requiring utilization of renewable energy • Incentivize large industries to promote co-generation of power • Promote the adoption of energy efficient technologies to lower the demand for energy
		Promote the cluster development strategy to focus on proximity to raw materials and markets of region-specific products	<ul style="list-style-type: none"> • Establish livestock produce processing industries in the County to promote value addition • Concentrate urban-based industries in the urban centers • Mineral-based industries to be located in-situ where the minerals are found

DRAFT

Map 3 provides a spatial representation of the policies proposed for Mandera County

Map 3: NSP Proposals for Mandera County



Source: State Department for Physical Planning, 2022

5 IMPLEMENTATION AND ADOPTION OF THE GUIDELINES

5.1 Overview

The implementation framework identifies activities and further ties them with responsible actors, resources and timeframes adequate for their execution. It constitutes a deliberately established method, means or system of ensuring that the policies, strategies and measures outlined in the guidelines are continuously and consistently executed to achieve their objectives.

To effectively implement the guidelines, the various sectors, actors and levels of planning have been identified and have to work together and the mandate of the sectors at the National and County levels of planning have to be integrated.

5.2 Implementation Approaches

The County Specific Guidelines will be implemented through various approaches including:

1. Preparation of spatial plans to integrate and conform to the proposals of the County Guidelines. The plans include:
 - Inter-County Physical and Land Use Development Plans for Metropolitan regions, conservation zones, river basins, water towers, coastal ecosystems, trans-boundary resource areas and transport corridors, among others.
 - County Physical and Land Use Development Plans.
 - Local Physical and Land Use Development plans for Cities, Urban areas, special area plans, subject plans and detailed neighbourhood plans, among others.
 - Sectoral plans
2. Integration of the guideline policies, strategies and measures into the County sector plans, programs and projects. Ministries, Departments and Agencies (MDAs), County and National Departments identified in the plan to administer the policies, strategies and measures are required to translate them into action

plans, programmes and projects and to include them in their subsequent sector plans.

3. Formulation of policies, regulations and standards to guide development control.

5.3 Implementation Framework

The implementation of the various policies, strategies, measures, programmes and projects under these guidelines will involve a wide range of actors. It will require a coordinated approach and partnership between the National and County Governments and non-state actors. It may require re-engineering of institutions and a number of actors to undertake the implementation through a harmonized approach.

The National Spatial Plan identified a multi-levelled framework for implementation of the plan that incorporates all levels of actors. In this regard, the institutions identified in the NSP to undertake implementation of the plan at County-level shall also be mandated to ensure implementation of this Guidelines.

The following are the Institutions mandated to ensure implementation of the County Specific guidelines;

5.3.1 County Physical Planning Committee

The role of the County Planning Committee shall be to ensure aspirations of the guidelines are articulated in preparation of the County Spatial Plans, County Integrated Development Plans and Local Physical and Land Use Development Plans.

The composition of this committee consists of;

- i. The Governor who will be the Chairperson,
- ii. the Deputy Governor,
- iii. the County Executive Committee Members from various sectors
- iv. Directors from various relevant County Departments including Lands and Physical Planning, Economic planning, Agriculture, Industrialization, Tourism, Environment, Transport and Infrastructure

The functions of the committee include;

- 1) To promote effective integration between physical, economic and sectoral planning within the framework of county development policies.
- 2) To provide policy guidance for the implementation of strategic spatial projects
- 3) To ensure that the guidelines policies and measures are mainstreamed in the various county plans.
- 4) To mobilize resource for implementation of the guidelines.

5.3.2 County Planning Unit (CPU)

The Technical Unit shall provide technical support to the various implementing County departments on issues relating to physical planning.

The CPU shall;

- i. Monitor the Implementation of the guidelines.
- ii. To disseminate components of the guidelines to the various county departments.
- iii. Update the County Physical Planning Committee on a regular basis on the implementation of the guidelines.

The County Director of Physical Planning shall be responsible for preparation of an annual state of planning report which shall among other things appraise the status of implementation of the guidelines.

5.3.3 National Land Commission

The National Land Commission shall play its oversight role in land use planning to ensure efficient implementation of the NSP and the guidelines. Other functions of the Commission in the implementation of the NSP and the guidelines include the following: To formulate mechanisms and parameters for monitoring and overseeing land use planning.

- i. To ensure that relevant planning authorities carry out their functions as required by law.
- ii. To make recommendations for improvements of the planning systems in the county.
- iii. To mobilize resources to support physical/land use planning.

5.4 Monitoring and Evaluation

Implementation of the guidelines will be monitored and evaluated to measure both outputs and outcomes and ensure that the intended actions are implemented in a timely manner. To facilitate attainment of the objectives of the guidelines, performance indicators will be developed by the County Physical Planning Department for efficient monitoring. Periodic reports will be prepared in relation to progress being made in their implementation.

The graphic below illustrates the implementation structure for County Specific guidelines.

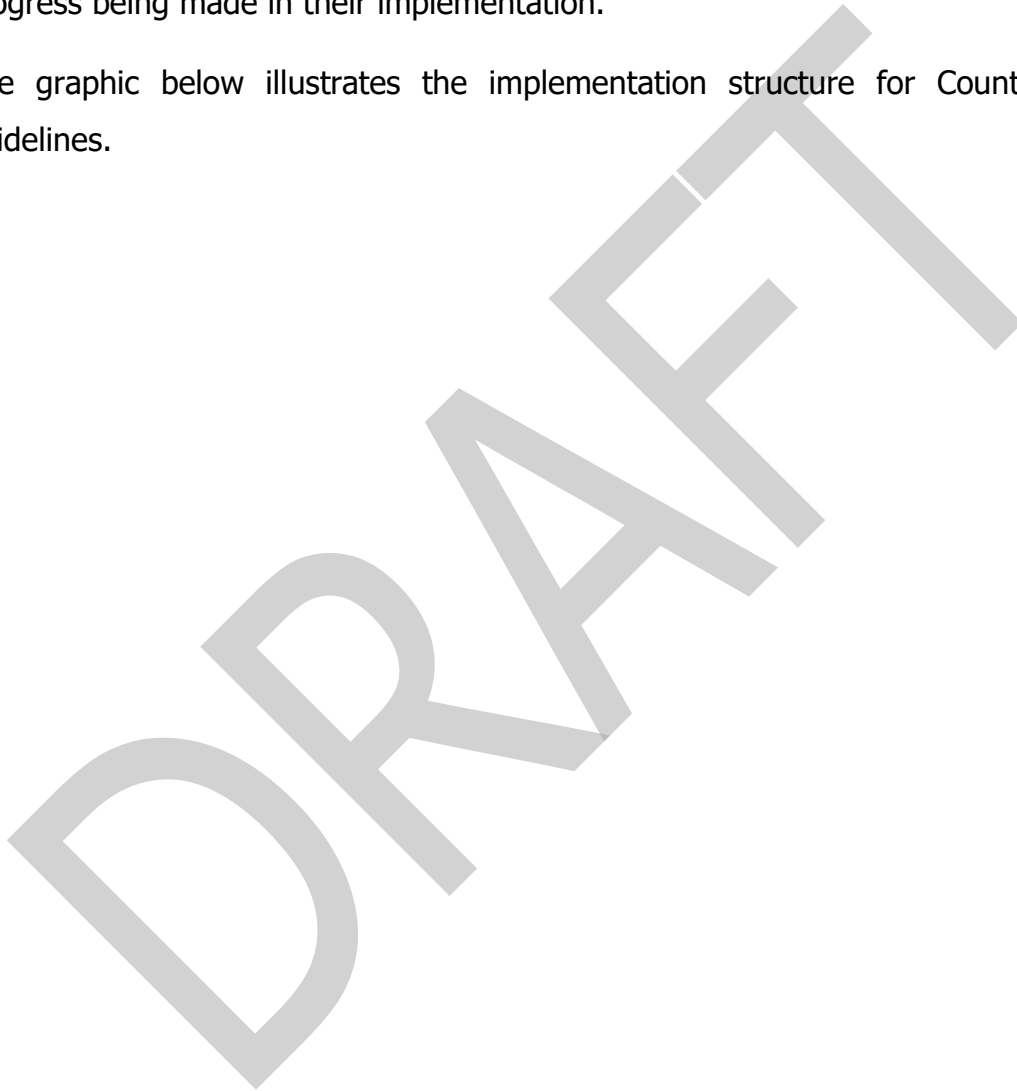
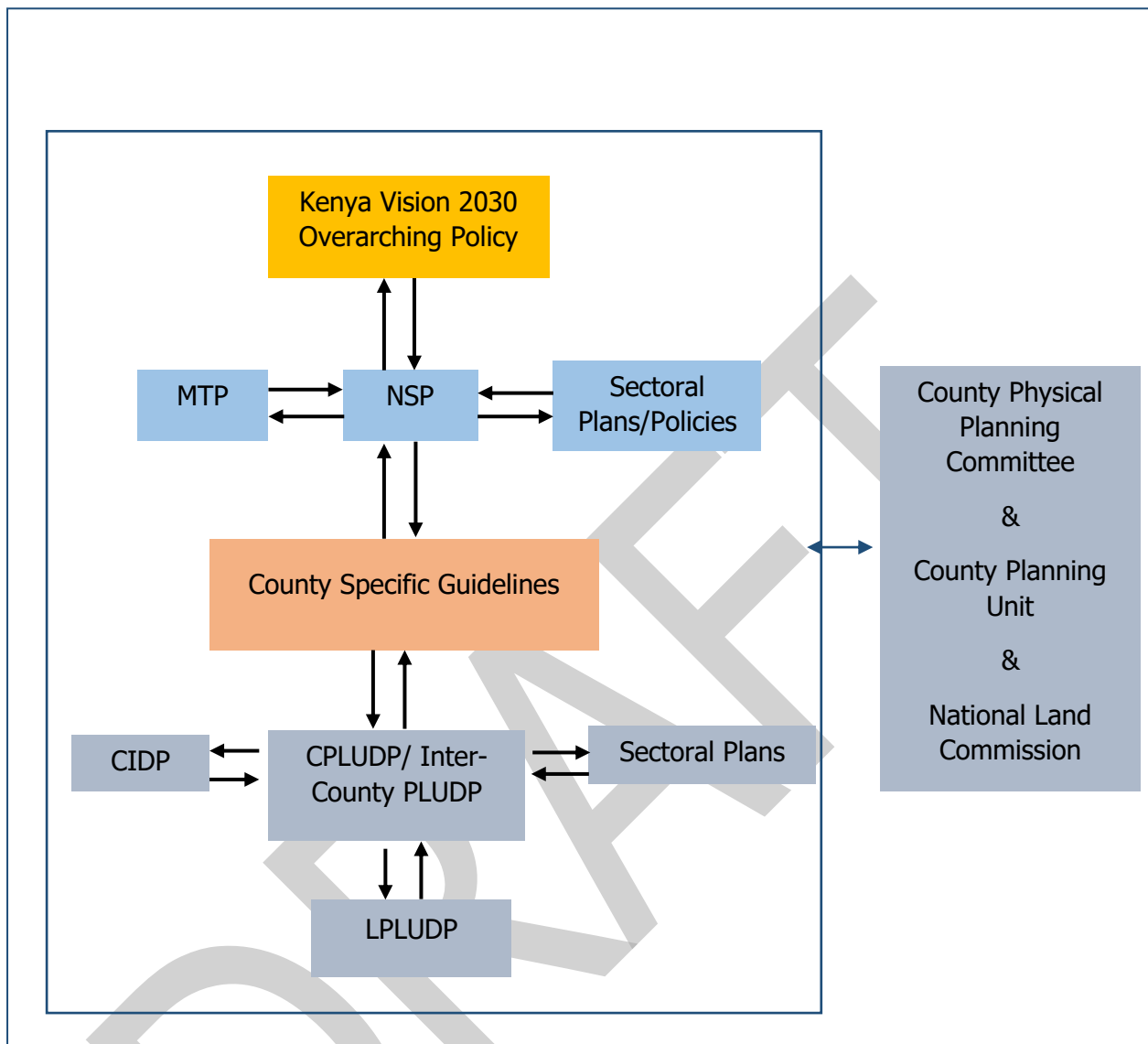


Figure 4: NSP Implementation Organization Structure



Source: The National Spatial Plan, 2015-2045

5.5 Conclusion

The application of these guidelines will be undertaken by a number of actors and hence the need for a coordinated approach. The lead agency will be Mandera County Government which will be responsible for implementing various county specific initiatives proposed by the guidelines.

The National Government, County Government of Mandera, the private sector and the general public will be critical in actualizing the objectives of these guidelines. The County Physical Planning Committee shall develop a communication strategy to enhance the synergies.

The National Department of Physical Planning shall undertake sensitization, training and capacity building of the County Government and National Government institutions and agencies that will be involved in the implementation of these guidelines. Special attention will be given to the County physical planning units, as they will be expected to provide technical expertise in the implementation of the County specific policies and strategies.