



NATIONAL SPATIAL PLAN IMPLEMENTATION GUIDELINES FOR NAIROBI CITY COUNTY



MINISTRY OF LANDS AND PHYSICAL PLANNING
STATE DEPARTMENT OF PHYSICAL PLANNING

© 2022



FOREWORD

The Constitution of Kenya apportions responsibility of planning to both National and County Governments. Under the Fourth Schedule on distribution of functions, Part 1 (21) and (32) mandates the National Government with the responsibility of formulating general principles of land planning, co-ordination of planning by the Counties, capacity building and technical assistance to the Counties. On the other hand, Part 2(8) allocates the function of County planning and development to County Governments. It is under these provisions that the County specific guidelines have been prepared.

The Department of Physical Planning prepared the National Spatial Plan (NSP) in response to the Kenya Vision 2030 to guide the spatial development of the country over a period of 30 years beginning in 2015.

It aims at achieving an organized, integrated, sustainable and balanced development of the country by providing a framework for better national organization and linkages between different activities within the national space.

To implement the Plan, the Counties are expected to play a key role by mainstreaming strategies, policies, and measures identified in the NSP into the County spatial planning systems.

The guidelines have identified planning policies, strategies, and measures that Plans at the County level are expected to mainstream and propagate. The policies address among others, the protection of rich agricultural land, development imbalances, conservation of environmentally sensitive areas, urban containment, and promotion of industrial development.

The guidelines provide direction on the existing potentials, the opportunities, the constraints/challenges inhibiting harnessing of the potentials, the strategies to apply, respective policies required, and the necessary measures to achieve optimal productivity, sustainability, efficiency and equity in the use of county land resources.

The guidelines are an opportunity on how best to refocus, vary and complement areas that require different approaches responding to country-specific needs and promote the

livelihoods of their people, while contributing to the national aspirations of vision 2030, regional objectives of the Africa Agenda 2063, and international targets of sustainable development. The refocusing will also be handy in reviewing and making decisions on NSP which is due for review in 2025.

These guidelines are therefore a tool for enhancing this critical path and provide a direction for development planning by the Counties as they discharge their responsibility of preparing county and local physical and land use development plans. The guidelines will also ensure that the County Integrated Development Plans conform to the proposed County specific policy guidelines and measures.

DRAFT

PREFACE

The National Spatial Plan(NSP) recognizes that Kenya is greatly endowed with massive and diverse resources distributed over the national space that require an integrated and coordinated approach for optimal productivity and sustainability.

The County Specific Guidelines have been derived from the National Spatial Plan and provide a planning framework for the integration of the NSP into the county spatial planning system. They are clear statements linking the National Spatial Plan to Inter-County, County and lower-level Physical and Land Use Development Plans and provide clarification on the anticipated sustainable development outcomes of implementing the Plan.

The County Government will adopt, develop and implement their plans based on the policies, strategies, and measures articulated in the guidelines. The realized county plans are expected to guide, harmonize and facilitate development within the county, hence contributing to the overall implementation of the NSP.

The guidelines also form an efficient compass and monitoring tool for National and County Governments to jointly pursue sustainable planning and appropriate implementation mechanisms.

For the county to be nationally competitive, there is need to balance development and promote optimal utilization of land and land-based resources as well as cultivate an integrated approach in addressing the intertwined challenges of regional imbalances/inequalities, rural development, underutilization of the available resources, uncontrolled urbanization, environmental degradation and inefficient transportation. It is imperative therefore, to prioritize the implementation of this strategic document so as to promote balanced development and competitiveness across the county

EXECUTIVE SUMMARY

The County Specific Guidelines seek to facilitate the implementation of the National Spatial Plan by outlining policies, strategies and measures to guide County spatial planning and development and promote optimal productivity, sustainability, efficiency and equity in the use of land. They provide a framework for preparation of lower level Plans including Inter-County, County and Local Physical and Land Use Development Plans.

The disconnect between National and County Spatial Planning and development has resulted in uncoordinated and unbalanced development, therefore creating a need for a clear structure that links National, Regional and Local planning and development. This is achievable through integration of the policies, strategies and measures proposed by the guidelines into County Spatial Plans, Programs and Projects, to tackle challenges of unbalanced regional development, urbanization, national competitiveness and unsustainable use of land and natural resources.

The County Specific Guidelines are organized into five chapters detailing various facets. Chapter one provides an overview, purpose and justification of preparation of the guidelines. It also outlines the objectives that the guidelines intend to achieve and details the preparation process as well as intended users. This chapter highlights the key principles that form the basis for preparation of lower level plans including public participation, liveability, sustainable development, urban containment, smart urban growth among others.

Chapter two details the legal and policy provisions that the guidelines are anchored upon. They include, among others, The Constitution of Kenya, 2010, The Physical and Land Use Planning Act No.13 of 2019, County Government Act, 2012, Environmental Management and Coordination (Amendment) Act, 2015, Sessional Paper No. 01 of 2017 on National Land Use Policy and Sessional Paper No. 10 of 2012 on Kenya Vision 2030.

The third chapter analyses the county profile, detailing its location, size, bio-physical characteristics, socioeconomic status and the County's comparative advantage in

relation to others. The locational context provides information on the geographical position and bordering Counties while the biophysical context discusses the topography, hydrology and climate. The socioeconomic status indicates key economic drivers of the County and its population and demographic structure.

Chapter four presents the County specific issues and proposes development strategies to promote national competitiveness, optimal use of land and resources, rural development, balanced intra-county development and urbanization. Additionally, it provides policy guidelines and measures for County advancement.

The final chapter five focuses on implementation and adoption of the guidelines. The implementation framework identifies institutions, County development programs and projects, and further ties them with responsible actors, resources and timeframes for effective execution. It proposes a framework for ensuring that the outlined policies, strategies and measures are adequately implemented.

DRAFT

Table of Contents

PREFACE	iv
Table of Contents	vii
1 INTRODUCTION	2
1.1 Background	2
1.2 Purpose.....	2
1.3 Objectives	3
1.4 Scope	3
1.5 Justification.....	4
1.6 Application of the Guidelines	5
1.7 Process of preparing the Guidelines	5
1.8 Targeted users of the Guidelines	6
1.9 Key Principles.....	8
2 THE POLICY, LEGAL AND PLANNING FRAMEWORK FOR THE GUIDELINES	9
2.1 Constitutional context.....	9
2.2 Policy Context	10
2.2.1 Sessional Paper No. 10 of 2012 on Kenya Vision 2030.....	10
2.2.2 Sessional Paper No. 01 of 2017 on National Land Use Policy	10
2.3 Legal context.....	10
2.3.1 The Physical and Land Use Planning Act No. 13 of 2019	11
2.3.2 County Governments Act, 2012	11
2.3.3 Urban Areas and Cities (Amendment) Act, 2019	11
2.3.4 Environmental Management and Coordination (Amendment) Act, 2015	11
2.3.5 National Land Commission Act, 2012	11
2.4 Planning Context.....	12
2.4.1 National Spatial Plan (NSP)	12
2.4.2 NSP linkage to other plans.....	13
3 NAIROBI COUNTY PROFILE	15
3.1 Overview.....	15
3.2 Locational and size	15
3.3 Bio-Physical Characteristics	17
3.4 Socio-economic Background	17

3.5	Main Economic activities.....	18
3.5.1	Trade and Commerce	18
3.5.2	Industry.....	18
3.5.3	Tourism.....	18
3.6	Nairobi County Comparative Advantage.....	20
3.6.1	Economic Potential.....	20
3.6.2	Natural resources	20
3.6.3	Nairobi National Park	20
3.6.4	Tourism and filming potential.....	20
3.6.5	Renewable energy potential	21
4	DEVELOPMENT STRATEGIES AND POLICY GUIDELINES FOR NAIROBI CITY COUNTY	22
4.1	County Specific Issues and Development Strategies	22
4.2	National Spatial Plan Policy Guidelines and Measures for Nairobi County.....	34
5	IMPLEMENTATION AND ADOPTION OF THE GUIDELINES	42
5.1	Overview.....	42
5.2	Implementation Approaches.....	42
5.3	Implementation Framework.....	43
5.3.1	County Physical Planning Committee	43
5.3.2	County Planning Unit (CPU)	44
5.3.3	National Land Commission	44
5.4	Monitoring and Evaluation	44
5.5	Conclusion	46

List of Figures

Figure 1: The Scope of the Guidelines	4
Figure 2: Policy Focus of the NSP.....	12
Figure 3: NSP Linkage to other Plans.....	14
Figure 4: Implementation structure of the guidelines	45

List of Maps

Map 1: Locational Context of Nairobi City County	16
Map 2: The Existing Situation in Bomet County.....	19
<i>Map 3: NSP Proposals for Nairobi City County.....</i>	<i>41</i>

List of Tables

Table 1: Targeted Users of the Guidelines	6
Table 2:Population Distribution.....	17
Table 3: County Specific Issues and Development Strategies	23
Table 4:Policy Guidelines and Measures	35

1 INTRODUCTION

1.1 Background

The County Guidelines set out policies, strategies and measures that will guide the long-term spatial development of the county for a period of 30 years. They cover the entire county and defines the general trend and direction of its spatial development.

The guidelines have been developed in line with the four thematic areas as outlined in the NSP. They provide a guide to the Planning Authority at the county on how to incorporate the NSP policies, strategies and measures during the preparation of County Spatial Plans and other lower level plans like the Local Physical and Land Use Development Plans consequently implementing the NSP.

The NSP County Specific implementation guidelines summarize the County's existing potentials and opportunities, the constraints (challenges) inhibiting harnessing of the potentials, the applicable strategies and respective policies required, and the necessary measures to achieve optimal productivity, sustainability, efficiency and equity in the use of the county land resources. They act as a reference point

1.2 Purpose

The purpose of the County Specific Guidelines is to provide a planning framework for mainstreaming of the National Spatial Plan to the County spatial planning system.

The guidelines are intended to assist the County enhance the implementation of the NSP by linking the proposed county specific policies, strategies and measures into the County plans, programs and projects while putting measures in place for achieving them. The guidelines inform preparation of various County Physical Plans such as the County Physical and Land Use Development Plans.

For optimal implementation of these plans, a County Integrated Development Plan (CIDP) is essential since it is a sectoral and budgetary based plan that draws its implementation programs and projects from the County Physical Plans.

1.3 Objectives

The guidelines provide policies, strategies and measures to deal with challenges of regional imbalances/inequalities, rural development, underutilization of the available resources, urbanization, environmental degradation and inefficient transportation.

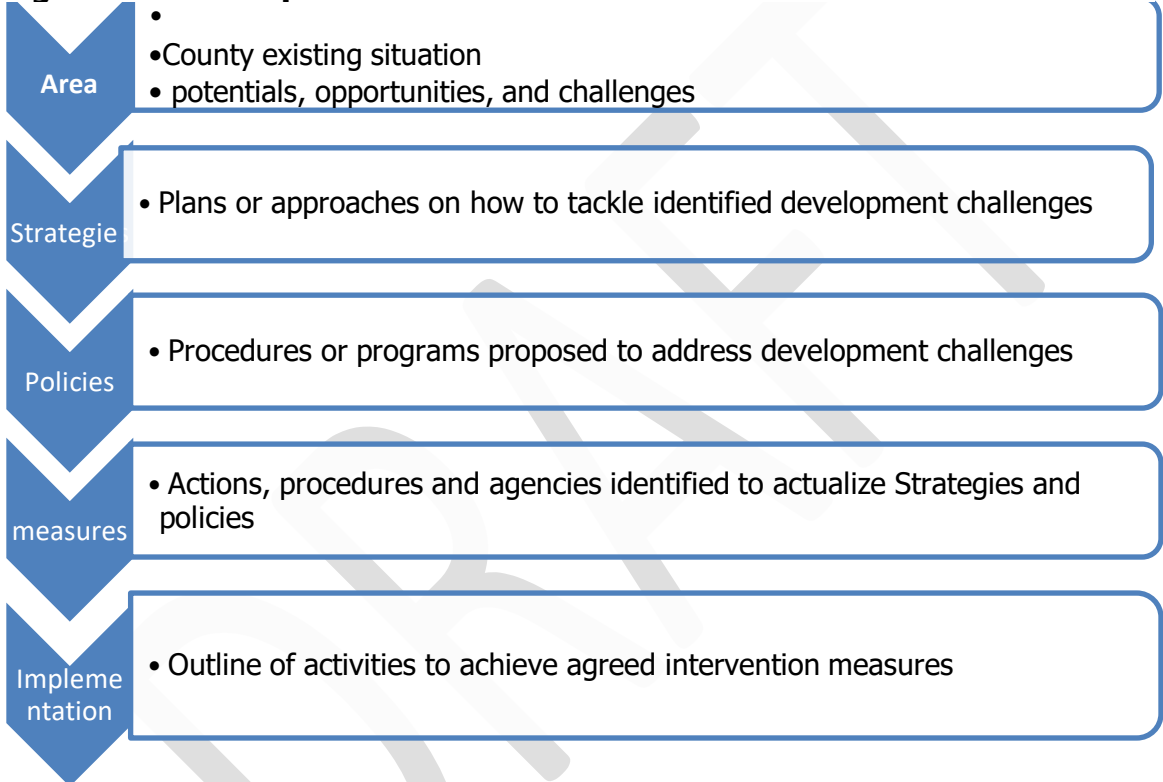
Specifically, the objectives are;

1. To sensitize the County on the provisions of the NSP
2. To promote synergy between National and County planning
3. To guide the County, implement the NSP
4. To identify the roles of the different actors in the implementation of the NSP.

1.4 Scope

The guidelines comprise policies, strategies and measures specific to Bomet County covering approximately 703.9 km². The guidelines highlight the County's existing potentials and opportunities, the constraints (challenges) inhibiting harnessing of the potentials, the applicable strategies and respective policies required, and the necessary measures, actions, approaches, plans and procedures prescribed to achieve optimal productivity, sustainability, efficiency and equity in the use of the county's land resources and an outline of activities to execute agreed interventions as captured in the National Spatial Plan, as indicated in Figure 1 below. These guidelines are effective up to the year 2045.

Figure 1: The Scope of the Guidelines



Source: State Department for Physical Planning, 2022

1.5 Justification

Since the approval and launch of the NSP, its implementation has been undertaken in an uncoordinated manner hence the guidelines will provide a standardized approach for all Counties. The guidelines are also an important tool for tracking and evaluating implementation of the NSP both at National and County levels.

The preparation of County Spatial Plans and other lower-level plans which is a mandate of Counties has been slow and, in some Counties, has not begun at all. These guidelines

are therefore a quick reference in preparation of county plans and for some Counties to help optimize land in the absence of these plans.

1.6 Application of the Guidelines

The guidelines will be used or applied in the following ways to achieve a more sustained and coordinated development of the County;

- To effectively coordinate planning between the National and the County Government;
- To improve the County Government's capacity to formulate, coordinate and implement integrated development policies, strategies, measures, programs and projects to address spatially unbalanced development;
- To inform strategic infrastructure policy and public investment decisions which support the achievement of balanced development in the County;
- To strengthen County inter-sectoral coordination within a spatial framework and provide the private sector with a clear context in which they can make investment decisions;
- To optimize the use of land and natural resources by providing a framework for making sustainable locational choices for sustainable development and conservation of land productivity in the County.

1.7 Process of preparing the Guidelines

The process involved reviewing the National Spatial Plan and identifying key issues, spatial policies, development strategies and measures specific to Bomet County. These key issues, spatial policies, development strategies and measures will be realized through preparation of County and other lower-level plans.

Research was undertaken on various thematic areas to enrich the County specific issues and development strategies as well as policy guidelines and measures/ interventions. Further, preparation of the guidelines considered the constitutional, policy and legal

provisions on physical and land use planning. Expert opinion was sought on the identified issues, policies, measures and strategies for implementation viability.

The preparation of the guidelines was identified as one of the implementation tools of the NSP, in which key NSP issues, policies, strategies and measures were translated into specific action plans, programs and projects at the County level.

1.8 Targeted users of the Guidelines

These Guidelines have diverse consumers and application depending on prevailing circumstances and actors as demonstrated in Table 1 below:

Table 1: Targeted Users of the Guidelines

User	Application
County Executive Committee Member in charge of Physical and Land Use Planning	<ul style="list-style-type: none"> • Preparation of county and lower-level plans • Linkage of planning structures • Quality control of the various county plans • Formulate county planning policies and strategies • Establish county specific planning institutions • Coordinate and implement county plans and policies
The County Director of Physical and Land Use planning	<ul style="list-style-type: none"> • Advising the county government on the impact of the county specific guidelines to the county • Preparation of County physical and land use development plans and other lower level plans • Formulating County physical and land use planning policies, guidelines, strategies, and standards; • Issuance of development permission and other development control instruments under The Physical and Land Use Planning Act, 2013.

<p>Licensed physical and land use planners both in public and private sectors</p>	<ul style="list-style-type: none"> • Prepare, coordinate and implement spatial plans • Quality control of plans and consultancy services • Formulate policies, strategies and development guidelines • Dispute resolution
<p>County assembly</p>	<ul style="list-style-type: none"> • Approval of strategic sectoral budgets such as planning • Vetting of various County specific plans • Formulation and passing of County planning legislation • Enhance capacity to oversee the executive on spatial planning
<p>Ministries, Departments and Agencies</p>	<ul style="list-style-type: none"> • Mainstreaming relevant NSP policies, programs and projects • Allocation of resources to priority areas, • Strengthening linkages with spatial planning in resource management
<p>The National Land Commission (NLC)</p>	<ul style="list-style-type: none"> • Oversight role in land use planning to ensure efficient implementation of the NSP • Ensure relevant planning authorities carry out their functions as required by the law
<p>Practitioners in the built environment</p>	<ul style="list-style-type: none"> • Advance NSP relevant policies, programs and projects hence optimization of land resource • Appreciate sectoral Linkages to spatial planning • Facilitate incorporation of the policies, strategies and measures into, County specific plans
<p>Community, developers and investors</p>	<ul style="list-style-type: none"> • Comprehend the County priority sectors and County Plans and policies • Complement County spatial planning and implementation measures

	<ul style="list-style-type: none"> • Making informed investment decisions
Development partners	<ul style="list-style-type: none"> • Reference frame for selecting and funding spatial planning activities • Understand planning linkages and implementation • Informed development decisions
Training institutions	<ul style="list-style-type: none"> • Compliment the curriculum for training of spatial planners • Understand the planning procedures and processes

1.9 Key Principles

The principles, as applied in the NSP, should guide and form the basis upon which the lower-level physical and land use plans are prepared. Further the principles should ensure sustainable, coordinated, and realistic development. They include the following:

- 1. Effective Public participation/engagement:** All plans shall be prepared in a participatory and consultative manner with relevant stakeholders and sectoral actors.
- 2. Urban containment/Compact cities:** Local plans shall strive to limit and control urban growth within the set urban boundaries to protect rich agricultural land, mitigate urban sprawl and reduce cost of infrastructural provision.
- 3. Livability:** The planning of urban areas shall enhance the livability index in the area of housing, environment, transportation, health, and social engagement. The urban areas must be economically viable, socially inclusive and ecologically sustainable.
- 4. Smart and green urban growth:** Plans shall promote sustainable use of energy, creation of green spaces, reduce the need for car travel, and promote use of local materials, support businesses, protection of heritage and creation of unique character.
- 5. Sustainable development:** Balancing social, economic and environmental dimensions of development and catering for current and future generations.

6. Promotion of ecological integrity: Plans shall promote the protection and conservation of environmentally sensitive areas.

7. Promote public transportation: Favor public transportation over private transport to ensure efficiency and functionality of urban places.

8. Balanced development: Plans to ensure there/ is balanced development in the County to cure inequalities.

DRAFT

2 THE POLICY, LEGAL AND PLANNING FRAMEWORK FOR THE GUIDELINES

2.1 Constitutional context

The formulation of these guidelines took into account the Constitution of Kenya 2010 aspirations and Principles. Article 66 of the Constitution of Kenya 2010 gives the State powers to regulate use of any land and property in the interest of land use planning

among others. The guidelines are therefore within and in response to the aspirations, values and principles as provided for in the constitution.

2.2 Policy Context

2.2.1 Sessional Paper No. 10 of 2012 on Kenya Vision 2030

Kenya Vision 2030 is the overarching national development framework which all plans should be aligned to. The preparation of all spatial plans should take cognizance of the aspirations, foundations and development concepts of the vision. The preparation of the first National Spatial Plan is identified in Kenya Vision 2030 as a flagship project and is regarded as one of the foundations for socio-economic transformation. Hence the need for linkage between national planning and county planning which will be achieved through mainstreaming NSP requirements into CSPs and other lower-level plans by preparing NSP county specific guidelines to implement the NSP at lower levels.

2.2.2 Sessional Paper No. 01 of 2017 on National Land Use Policy

The policy was formulated to address the various challenges related to land use and ensure efficient, productive and sustainable use of land. The main goal of the policy is to provide legal, administrative, institutional and technological framework for optimal utilization and productivity of land related resources in a sustainable and desirable manner at national, County and community levels.

The policy recommends the preparation of a National Spatial Plan to provide an integrated framework for the development of the country including guidelines for sustainable rural and urban planning management. The policy also provides for the preparation of planning guidelines, policies and standards to be observed by County Governments and other sectoral agencies within the frameworks of approved physical and land use development plans. These guidelines have been prepared on this basis and they are to be observed by counties in the implementation of the National Spatial Plan.

2.3 Legal context

Various Acts of Parliament are in place to provide the legal framework for the implementation of the mandate provided for in Article 66 of the Constitution. The Physical

and Land Use Planning Act, 2019, The Urban Areas and Cities (Amendment) Act, 2019, County Governments Act No. 17 of 2012, The Land Act No. 6 of 2012, National Land Commission Act No. 5 of 2012 among others. The NSP County specific guidelines are prepared in this context and meet this criterion.

2.3.1 The Physical and Land Use Planning Act No. 13 of 2019

This is the overarching statute that provides for formulation of both National and County physical and land use planning policies, guidelines and standards. The Act further provides for administration, types, content, process and approval of the various types of Physical and Land Use Development Plans.

2.3.2 County Governments Act, 2012

This statute mandates County Governments to carry out the planning function at the county level. The guidelines support preparation of the various county level plans that meet the recommended quality and standards.

2.3.3 Urban Areas and Cities (Amendment) Act, 2019

The statute provides for classification of urban areas and cities, their governance and management, and for integrated development planning. The guidelines are a basis for preparation of these lower-level plans.

2.3.4 Environmental Management and Coordination (Amendment) Act, 2015

The Act provides for the establishment of an appropriate legal and institutional framework for the management of the environment as well as guidelines relating to environmental management and prevention or abatement of environmental degradation. The guidelines take cognizance of this Act and will be implemented within the framework

2.3.5 National Land Commission Act, 2012

The Act mandates the National Land Commission with the management and administration of public land on behalf of the National and County Governments and to monitor and oversight physical and lands use planning in the country. The guidelines fall within the ambit of this statute and will facilitate their oversight responsibilities.

2.4 Planning Context

2.4.1 National Spatial Plan (NSP)

The National Spatial Plan (NSP) covers the whole country encompassing the exclusive economic zone. The NSP outlines policies and strategies geared towards influencing desired future distribution and organization of human activity outlined in Vision 2030 and sectoral policies and plans. It aims at achieving economic efficiency and balanced development. The various County Spatial Plans should be aligned to the policies outlined in the NSP as demonstrated in Figure 2 below.

Figure 2: Policy Focus of the NSP



Source: National Spatial Plan, 2015-2045

To actualize the NSP, a comprehensive implementation strategy has been proposed that embraces a multiplicity of actors including National Government Ministries, Departments and Agencies, County Governments and the National Land Commission. The strategy proposes the establishment of the following institutions as key in the implementation of the Plan; The National Physical Planning Council, the National Technical Committee and the County Physical Planning Committee.

2.4.2 NSP linkage to other plans

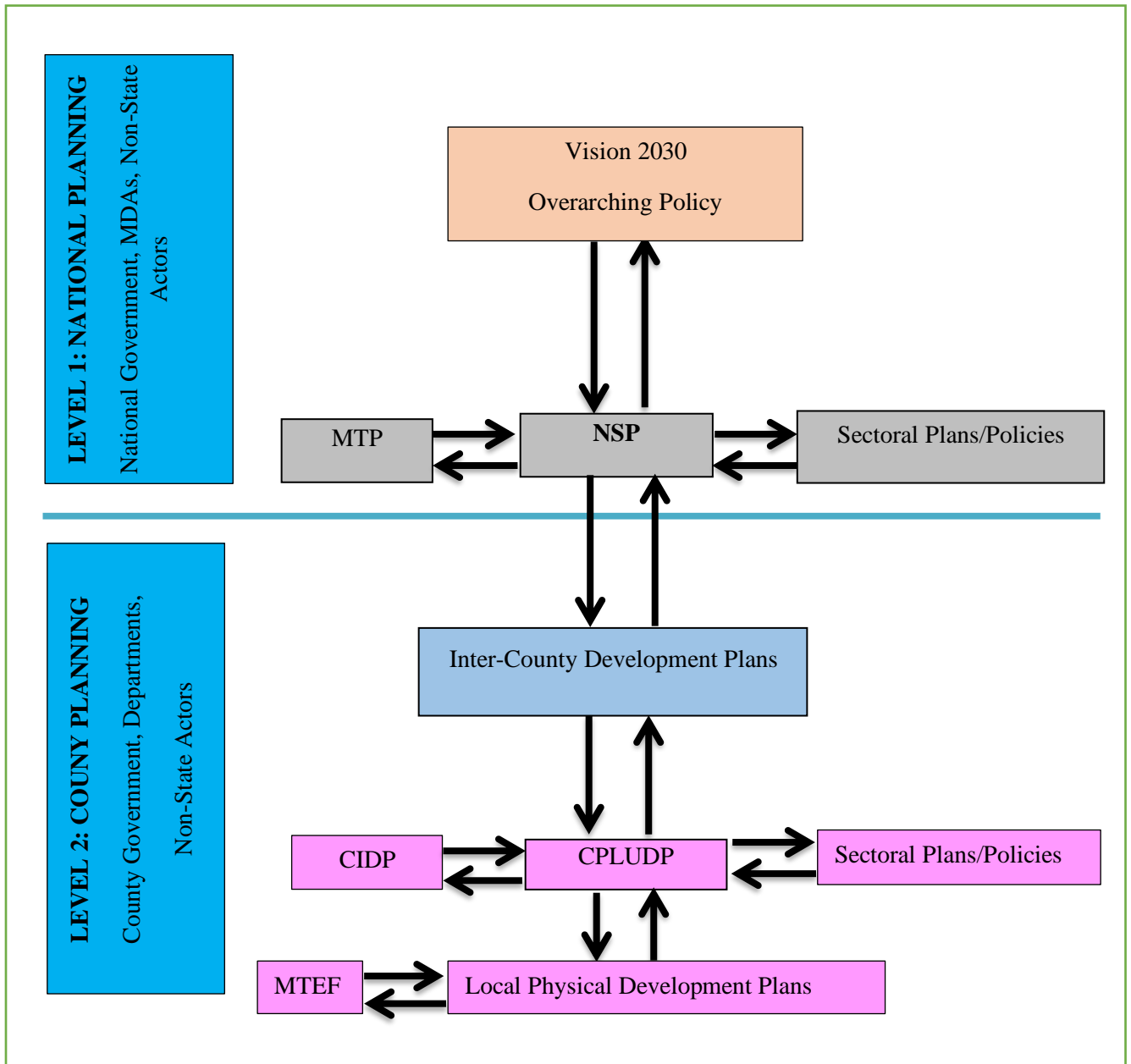
The linkage of the National Spatial Plan (NSP) to county and other lower-level plans is key to realization of its aspirations and the successful actualization of these plans. The NSP provides a spatial framework to ground the Vision 2030 flagships projects and form a basis for coordination of County policies, strategies, measures and plans.

Inter County and County plans take into considerations the policies, measures and strategies of the NSP and implements them actualizing its aspirations.

County Physical and Land Use Development Plans provide a framework where the CIDP draws its programs and projects. The implementation of the CIDP in turn leads to realization of the objectives of the County Physical and Land Use Development Plan.

DRAFT

Figure 3: NSP Linkage to other Plans



Source: The National Spatial Plan, 2015-2045

3 NAIROBI COUNTY PROFILE

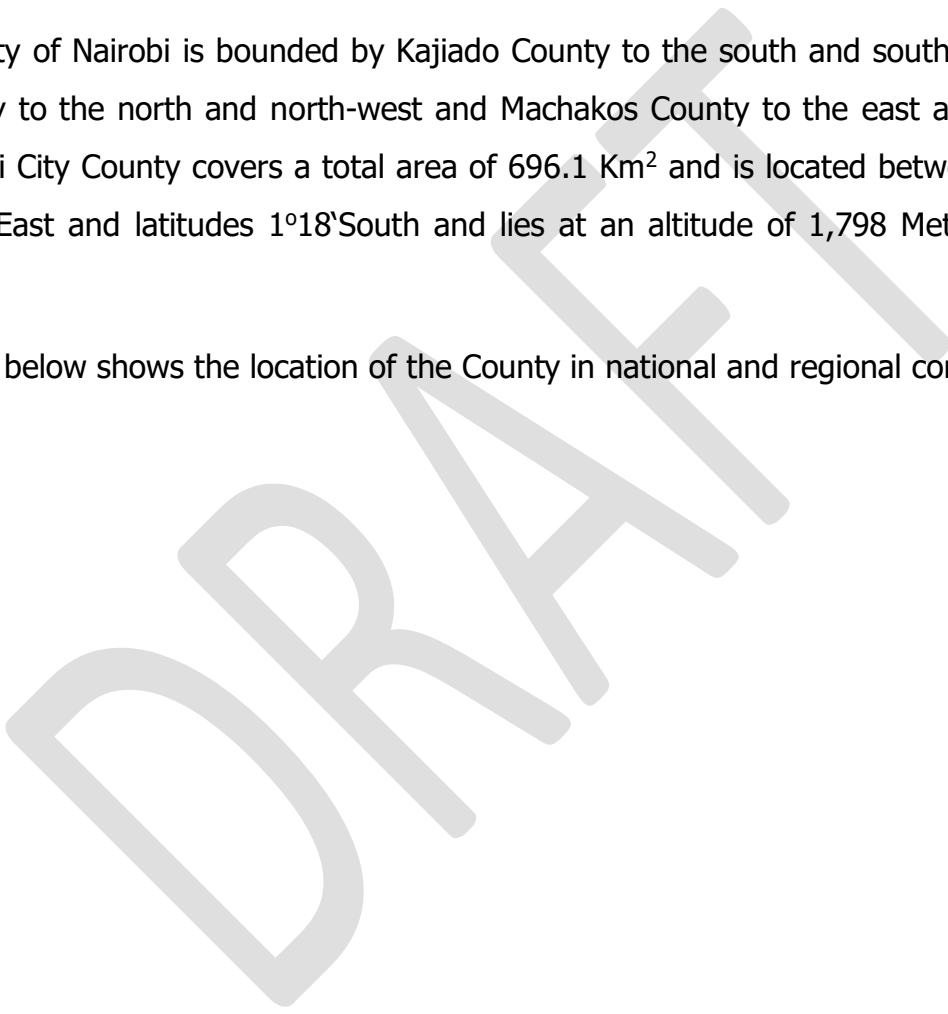
3.1 Overview

This chapter provides a description of the county in terms of the location and size, physiographic and natural conditions, demographic profile, socio-economic and infrastructural information.

3.2 Locational and size

The city of Nairobi is bounded by Kajiado County to the south and south west, Kiambu County to the north and north-west and Machakos County to the east and south-east. Nairobi City County covers a total area of 696.1 Km² and is located between longitudes 36°45'East and latitudes 1°18'South and lies at an altitude of 1,798 Meters above sea level.

Map 1 below shows the location of the County in national and regional context.



Map 1: Locational Context of Nairobi City County



Source: State Physical Planning Department, 2022

3.3 Bio-Physical Characteristics

Nairobi receives a mean annual rainfall of 786.5 mm with a bi-modal rainfall pattern; short rains received between October and December and long rains received between March and May. Due to its high altitude (of 1,798 metres above sea level), the County enjoys a relatively cool climate with temperature ranging from a minimum of 10°C to a high of 29°C.

The Nairobi City is characterized by undulating hilly topography with an elevation ranging from 1,460 m to 1,920 m.

3.4 Socio-economic Background

Demography: The population of Nairobi City County from KNBS 2019 data was estimated at 4,396,828 (50.14% women and 49.86% men) It has an average household size of 2.9 and population density of 6246 persons per square kilometer. By the end of the planning period, the population of Nairobi City county is expected to be 9,622,415 persons.

Table 2: Population Distribution

Year	2019	2020	2025	2030	2035	2040	2045
Population size	4,396,828	4,563,908	5,499,506	6,626,901	7,985,411	9,622,415	9,622,415
Male	2,192,452	2,275,565	2,742,054	3,304,173	3,981,526	4,797,736	4,797,736
Female	2,204,376	2,288,343	2,757,452	3,322,728	4,003,885	4,824,679	4,824,679
Households	1,516,148	1,573,761	1,896,381	2,285,138	2,753,590	3,318,074	3,318,074
Area (km²)	703.90	703.90	703.90	703.90	703.90	703.90	703.90
Density	6246	6484	7813	9415	11345	13670	13670

Source: State Department of Physical Planning, 2022

3.5 Main Economic activities

3.5.1 Trade and Commerce

Nairobi County provides a conducive environment for doing businesses by both locals and international communities. The types of markets that exist in Nairobi include; open air markets; self-constructed markets, development tenant purchase markets, rental markets, hawkers' markets and wholesale markets. The Gikomba market is Kenya largest market. It offers affordable second hand clothing, furniture, accessories, fresh produce and processed materials. Besides the trade, there are 43 Commercial banks with a network of 364 branches that operate in different parts of the County with the City centre having the highest concentration. The County has 94 Forex Bureaus and 44 Microfinance Institutions (MFIs).

3.5.2 Industry

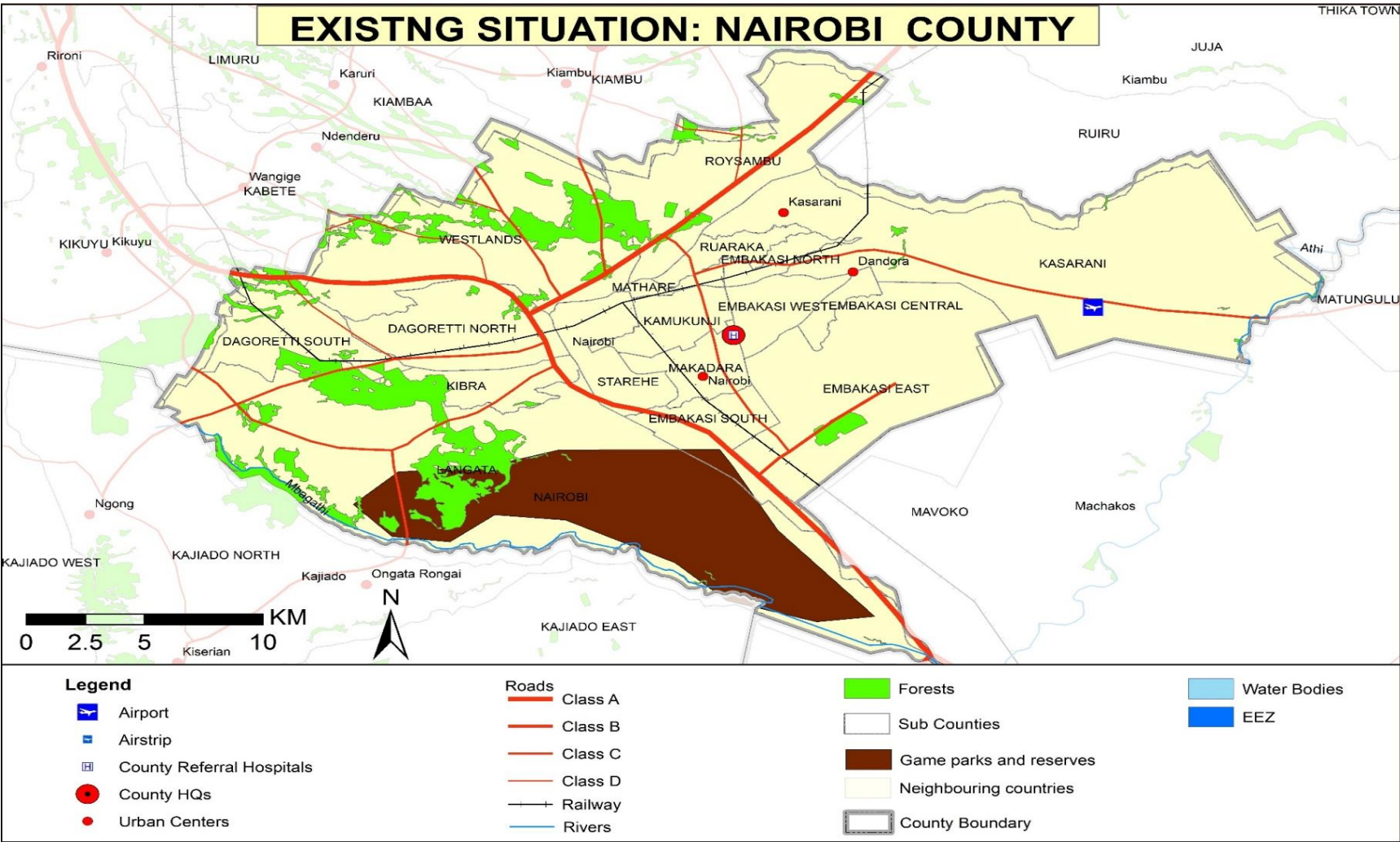
Nairobi is one of the most industrialized counties in Kenya. The various industries play a significant role in employment creation, income generation and as a source of revenue generation. There are 2061 industries in Nairobi County with 422 being in manufacturing. Most of these industries are located in industrial area, Kariobangi and Babadogo areas.

3.5.3 Tourism

Nairobi City County is considered the safari capital of the world and has many spectacular hotels to cater for safari bound tourists and it has major parks and museum which serves as main tourist attraction and activities centres:

Map 2 below shows the existing situation in Nairobi County.

Map 2: The Existing Situation in Bomet County



Source: National Spatial Plan

3.6 Nairobi County Comparative Advantage

3.6.1 Economic Potential

Nairobi County is a gateway as well as the main commercial and financial hub and hosts many international organizations including the UN, UN Habitat, UNFP, UNDP, UNEP, FAO, Coca Cola and the World Bank. The city has a fair level of infrastructure development including transport networks- roads (A104&A2, by-passes and ring roads), airports (JKIA&Wilson airport) and rail (SGR&Old railway), housing, health services, knowledge industry, institutions and utilities. In addition, the City makes the Core of the Greater Nairobi Metropolitan and contributes 50% of the GDP to the National economy. The city presents opportunities which if enhanced can promote the country`s competitiveness by making the city more functional, efficient and livable.

3.6.2 Natural resources

Nairobi County has several natural resources which include rivers and forests. The rivers comprise of, Kabuthi Nairobi, Ngong and Mutuini River while the forests include, Karura, Ngong Road, Nairobi and Arboretum forests. Besides that, there is Nairobi National Park which act as a tourist attraction both locally and internationally.

3.6.3 Nairobi National Park

The Nairobi National Park (11,640 ha), located within Nairobi City, approximately 7 km from the city centre, is conserved and supervised by Kenya Wildlife Service (KWS). The Park is not only the Kenya`s oldest national park but also happens to be the only national park within a capital city in the world making it a very unique offering. It is a home to various wildlife including lion, cheetah, hyena, jackal, serval cat, very rare Sokoke cats, warthog, leopard, various monkeys, baboons and buffalo. The main types of birds in the Park are parrots, guinea fowls, crowned cranes and ostriches.

3.6.4 Tourism and filming potential

As the capital City and commercial centre, Nairobi County attracts many businessmen and leisure tourists. The Wilson Airport and Jomo Kenyatta International Airports are

located within the County hence easy access by both foreign and domestic tourists. The County is also a home to various embassies and their residences.

Nairobi County has major parks and museum which serves as main tourist attraction and activities centres: Nairobi national park, Nairobi safari walk and Nairobi animal orphanage. The Nairobi National Museum which houses a large collection of artifacts is also located in the County. Other important museums include Nairobi Gallery and the Nairobi snake park.

3.6.5 Renewable energy potential

The City consumes about 50% of total national power generated annually. In Nairobi 72 % of household have access to electricity. The County has high potential for solar, wind and biogas renewable sources of energy and should invest in harnessing it

DRAFT

4 DEVELOPMENT STRATEGIES AND POLICY GUIDELINES FOR NAIROBI CITY COUNTY

4.1 County Specific Issues and Development Strategies

The National Spatial Plan provides strategies for spatial growth and development across the country. The strategies are aimed at providing a spatial expression to Kenya Vision 2030 and other sector policies.

This section seeks to provide strategies for spatial growth and development of the county by addressing the factors that prevent the county from achieving the intended goals and objectives. The development strategies discussed are aimed at managing the global impacts, optimizing use of natural resources, creating a county balance and transforming rural areas. Specifically, the development strategies have been proposed to address the following aspects of the county's development agenda;

- Enhancing the global/national competitiveness
- Optimal use of land and other resources
- Balanced county development
- Rural development in the county
- Urbanization

The following are detailed NSP sector-specific issues and strategies that apply to Nairobi City County.

Table 3: County Specific Issues and Development Strategies

Strategy 1: Enhancing global competitiveness		
Potentials/Opportunities	Issues	Strategies
<p>Locational advantage</p> <ul style="list-style-type: none"> • Nairobi is the Country's Capital City. • The County hosts many international organizations and Embassies • Nairobi County forms the Core of the Great Nairobi Metropolitan • Nairobi is a commercial and financial hub • The location of Nairobi National Park within the City. 	<ul style="list-style-type: none"> • Centralization of services within the Central Business Unit hence increased transport demand to the Core • Being the Capital City dictates preference for land use hence high land values • High rate of land subdivision • Surging population (rural urban migration) hence pressure on the existing infrastructure • Land speculation by private developers • Lack of full enforcement of the existing development plans • Some urban areas lack development plans to guide development. 	<ul style="list-style-type: none"> • Prepare and enforce policy guidelines to guide land use and enhance rational use of space. • Preparation and implementation of physical development plans to guide land use in the County • Institute sanctions on idle land to encourage productive and sustainable land utilization • Decentralization of services to decongest the City
<p>Thriving Real Estate</p>	<ul style="list-style-type: none"> • High land prices • High housing costs hence disparity between housing supply and demand for affordable housing • Population increase hence exceeding infrastructure • Slum proliferation and Urban Sprawl • High rate of sub-division of land • High rate of change of use to accommodate real estate development 	<ul style="list-style-type: none"> • Government incentives and subsidies in housing provision • Enforcement of development control regulations for orderly development • Adoption of cheap construction technologies • Development of housing policies and regulations

Location and investment destinations which offer high return on investment at relatively low costs	Low return on investment due to high costs of production, inefficiency and outdated technology.	Locate export oriented industrial and manufacturing activities in Nairobi and Mombasa to leverage on their transportation
<p>Industrial hub</p> <ul style="list-style-type: none"> The County 2061 industries with 422 being in manufacturing industries 	<ul style="list-style-type: none"> Pollution from raw sewers and effluent discharge from the industries High demand for water and energy for industrial use. Proliferation of slums to host low income earners working in the industries Inadequate infrastructure and utilities Poor enforcement of the law; Use of inappropriate technology 	<ul style="list-style-type: none"> Enhanced enforcement of existing environmental laws Use of clean technology. Carry out environmental screening before implementation of projects and programmes to assess the possible environmental effects. Prepare an industrial master plan Enhancing knowledge and communication; and reducing emissions from industries.
<p>Transportation hub</p> <p>The County is well connected:</p> <ul style="list-style-type: none"> Jomo Kenyatta International Airport, Wilson Airport and Eastleigh Moi Airbase Road A104 and A2 traverse the County 	<ul style="list-style-type: none"> Traffic Congestion The 8am – 5pm working hours increases transportation demand in the morning and evening Pollution from vehicular emissions Lack of an efficient mass public transport system Encroachment on road reserves Road accidents 	<ul style="list-style-type: none"> Integration of the various modes of transport Expand and upgrade roads Prepare and implement a traffic management plan Staggering working hours (adapt a 24-hour economy) Prepare and enforce policy guidelines on transportation

<ul style="list-style-type: none"> • Southern, Eastern, Northern and Western By-pass which is under construction • Various ring roads and local roads also serve the County • The Standard Gauge Railway Station at Syokimau • The proposed railway city • Modernization of Commuter Train Operation 	<ul style="list-style-type: none"> • Lack of integration of the various modes • Poor condition of some internal roads • Lack of Non-Motorised and Intermediate Means of Transport(NMIMT) 	<ul style="list-style-type: none"> • Provision of NMIMT infrastructure • Provide mass transportation facilities such as Bus Rapid Transit and Commuter Rail Network • Discourage use of private cars by stabling an effective public transportation system • Design bus routes and schedules for a reliable transportation system
---	---	---

Area 2: Optimizing the Use of land and natural resources

Sector	Potentials/Opportunities	Issues	Strategies
Environmental Conservation and protection Areas	Conservation areas (Highlands)	<ul style="list-style-type: none"> • Soil erosion; • Deforestation; • Flooding • Inadequate solid and liquid waste management facilities • Unsustainable quarrying 	<ul style="list-style-type: none"> • Enforcement of regulations on environmental conservation • Strict soil erosion control measures. • Flood mitigation measures put in place • Mapping and regulation of quarrying activities in fragile areas (landslide prone areas)
	Protection Areas Rank 1 Wetlands Natural forests (Karura, Ngong Road, Nairobi National Park and Arboretum forests.)	<ul style="list-style-type: none"> • Deforestation • Encroachment by human settlement and activities • Negative effects of climate change • Massive deforestation and encroachment of water catchment 	<ul style="list-style-type: none"> • Restriction of development in these areas except for the purpose of eco-tourism and research.

		areas caused by increased population.	<ul style="list-style-type: none"> • Strict regulations on Environmental sensitive areas i.e., Wetlands • Intensify forest cover through afforestation, re-afforestation and agroforestry of the existing forests
	Rank 2 Water bodies (rivers and dams), parks and conservancies.	<ul style="list-style-type: none"> • Drying up of water sources; • Encroachment by human settlement and activities • Pollution of rivers • Poaching of wild animals, • Deforestation and illegal logging • Negative effects of climate change 	<ul style="list-style-type: none"> • Restriction of development in these areas except for tourism related activities. • Preservation and conservation of bio-diversity • Enforcement of environmental legislation
Land and Natural Resources	<ul style="list-style-type: none"> • Untapped potential for green energy generation including wind, biogas and solar. 	<ul style="list-style-type: none"> • Inadequate technology and exploration infrastructure • High costs of exploiting available natural resources • Lack of policy on green energy generation and distribution 	<ul style="list-style-type: none"> • Optimal utilization of the available natural resource potential • Invest in appropriate technology and infrastructure • Undertake further exploration of the available natural • Promote production and utilization of energy from biodegradable waste materials in learning and health institutions.
	<ul style="list-style-type: none"> • Water: Permanent rivers: Kabuthi, Nairobi, Ngong and Mutuini Rivers 	<ul style="list-style-type: none"> • Inadequate technology and exploration • Inadequate water harvesting structures. 	<ul style="list-style-type: none"> • Optimize the use of underground water • Invest in appropriate technology and Infrastructure

	<ul style="list-style-type: none"> • Wetlands are; Nairobi Dam & Jamhuri Dam • Underground water 	<ul style="list-style-type: none"> • Lack of a regulatory framework in exploitation of underground water • Pollution 	<ul style="list-style-type: none"> • Set up and implement a regulatory framework • Proper waste management
Industrialization	<ul style="list-style-type: none"> • Manufacturing based Industries • Agro-based industries • Cottage industries 	<ul style="list-style-type: none"> • Low adoption of technology for value addition. • Inadequate transport infrastructure • Price fluctuations • Lack of established Value chains • Insufficient market for finished products • Lack of frameworks to safeguard Intellectual Property Rights (IPR) • Lack of proper waste proper management and enforcement of the existing regulatory framework. • High demand and costs of energy 	<ul style="list-style-type: none"> • Provide appropriate technology to enhance value addition. • Provide adequate, supportive transport and infrastructure • Sensitize players in the sector on the aspect of IPR and enforce regulations on the same • Promote assertive marketing campaigns for products both domestically and internationally • Diversify energy production sources to reduce costs of production and enhance its reliability
Tourism (Central Highlands and Rift Valley tourism Circuit)	<ul style="list-style-type: none"> - Presence of Nairobi national park, Nairobi safari walk and Nairobi animal orphanage - 10 Museums - 40 heritage and cultural sites - Hotels and Conference facilities (MICE) 	<ul style="list-style-type: none"> • Underdeveloped tourism sites and products • Underexploited tourism potentials • Poor marketing strategies to promote tourism • Continued over reliance on a narrow tourism product range, • Poaching and human wildlife conflicts, 	<ul style="list-style-type: none"> • Promote domestic tourism by providing incentives and subsidies • Increase tourism market segment • Open up under-utilized sites • Enhance security in tourism potential areas

	<ul style="list-style-type: none"> - Sporting facilities (Kasarani Sports Centre) - Medical facilities 	<ul style="list-style-type: none"> • Security concerns leading to negative travel advisories, • Encroachment of human activities into protected areas 	<ul style="list-style-type: none"> • Provide appropriate tourism support infrastructure and facilities • Conservation of wildlife and forest resources • Improve transportation infrastructure. • Strict enforcement of the existing regulations for safeguarding protection areas.
Housing (Urban land requirements)	<ul style="list-style-type: none"> • Existing housing units • Public-Private Partnerships in provision of housing • Existing supporting legislations 	<ul style="list-style-type: none"> • Lack of enforcement of existing legislation on housing development and land use • Housing demand outstrips supply • Little government involvement in housing provision • Slum proliferation • Appropriate transport infrastructure and utilities • Insecurity of tenure land ownership for speculative purposes and unregulated land acquisition for housing developments 	<ul style="list-style-type: none"> • Enforce, harmonize and regularly review the existing legislative and regulatory instruments; • Bridge the gap between housing demand and supply • Inventorize all the slums and upgrade them; • Alleviate the wastage of land in informal settlement and encourage infill and mixed development • Provide incentives to squatters to buy the land they occupy at subsidized rates • Provide adequate and appropriate infrastructure; • Government and/or PPP to provide site and serviced properties;

			<ul style="list-style-type: none"> • Impose a progressive tax over and above the current land rents and rates on vacant urban land; • Operationalize sectional titling to provide shelter other than land. Encourage pooling of land for bulky housing.
Transport	Road <ul style="list-style-type: none"> • A2 Thika Super Highway (Nairobi- -Thika) • A104(Nairobi-Kikuyu) • Southern, Eastern and Northern By-passes • Various ring roads and other classified and unclassified roads 	<ul style="list-style-type: none"> • Traffic congestion due to high transportation demand • Lack of Non –Motorized and Intermediate Mode of Transport (NMIMT) infrastructure • Uncontrolled motorcycle outburst • Encroachment and/ or grabbing of road reserves • Inadequate or lack of terminal facilities • Poor quality of transport services • Inappropriate modal split; • Transport modes not fully integrated; 	<ul style="list-style-type: none"> • Efficient road transport management • Integrate transport corridor planning • Repossess and revert all illegally acquired land for roads infrastructure • Preserve and secure adequate land for future transport and other related infrastructural Development. • Promote the purchase and use of high occupancy public transport vehicles • Introduce Bus Rapid Transit (BRT) as envisaged in the NIUPLAN • Enforce a regulatory standard requirement for all public transport service operators; • Encourage private sector participation;

			<ul style="list-style-type: none"> • Upgrading of all the roads • Encouragement of use green transport;
	<p>Railway Transport</p> <ul style="list-style-type: none"> • 75Km railway network and a total of 15 functional railway stations • Standard Gauge Railway (SGR) station at Syokimau 	<ul style="list-style-type: none"> • The stations lack/inadequate of integration to other modes of transport • Poor condition of the rail infrastructure as a result of lack of maintenance 	<ul style="list-style-type: none"> • Integrate the railway transport to other modes • Introduce Commuter Rail Network as envisaged in the NIUPLAN
	<p>Air transport</p> <p>Nairobi County hosts 3 airports</p>	<ul style="list-style-type: none"> • Lack of modal integration (especially air to road) • Increasing demand for air transport 	<ul style="list-style-type: none"> • Integrate all modes of transport • Expand the 3 airports to handle more passengers and cargo.
Public Utilities	<p>Water and Sanitation (16</p>	<ul style="list-style-type: none"> • Encroachment of catchment areas • Water pollution • Inadequate sewerage treatment facilities • High rate of urbanization 	<ul style="list-style-type: none"> • Protection and rehabilitation of waters sources and catchments areas • Invest in water harvesting technologies and storage facilities. • Develop appropriate water reticulation network • Establishment and upgrading of appropriate sanitation infrastructure • Enforcement of regulation on discharge of wastes
	<p>Solid waste management</p> <ul style="list-style-type: none"> • Existing SWM facilities (36.1% garbage collected by private firms) 	<ul style="list-style-type: none"> • High rate of urbanization • Inadequate and poorly managed solid wastes management facilities 	<ul style="list-style-type: none"> • Construction and upgrading of solid waste management facilities

	<ul style="list-style-type: none"> • Dandora dumpsite 	<ul style="list-style-type: none"> • Huge volumes of Solid waste (over 2,000 tons per day in Nairobi alone) 	<ul style="list-style-type: none"> • Promote the, Reduce, Reuse, Recycle696.1 Km²696.1 Km²696.1 Km² (3Rs) • Explore other modes of solid waste management such as landfills and recycling of waste materials.
	<p>Energy</p> <ul style="list-style-type: none"> • Solar • Biogas • Wind 	<ul style="list-style-type: none"> • High energy demand by the numerous industry • Inadequate technology and infrastructure; • High initial costs for harnessing renewable energy • Lack of proper assessment and research • Adverse environmental effects in exploiting green energy • Lack of relevant policy framework to guide tapping and use of energy 	<ul style="list-style-type: none"> • Develop infrastructure for harnessing, transmitting and distributing renewable energy • Formulate policy framework to guide exploitation of green energy • Implement Energy efficiency systems and energy demand management systems to ensure efficient and productive use of energy.
	<p>ICT</p>	<ul style="list-style-type: none"> • High cost of ICT infrastructure • Lack of infrastructure to support ICT utilization. • Low connectivity to ICT in the peri-urban areas 	<ul style="list-style-type: none"> • Building ICT relevant infrastructure • Expansion of the existing network to all areas • Mainstream ICT in all sectors to promote service • Increase efficiency and productivity of the existing platforms such as Huduma center

			<ul style="list-style-type: none"> • Expand the fiber optic network to all urban centers • Improve ICT adoption.
	Sporting and social facilities	<ul style="list-style-type: none"> • Inadequate sporting facilities and coaching services • Dilapidated social facilities • Minimal involvement of youths in sporting activities • Untapped/underutilized potential in sports 	<ul style="list-style-type: none"> • Construction and rehabilitation of sporting facilities • Rehabilitate all the social facilities • Promote sports in the county by engaging young people in sporting and nurturing talents • Formulation of a sports management legislative policy to govern sporting activities in the County
Health care	<ul style="list-style-type: none"> • Continued technological advances in the field of medicine in the form of invention of more efficient equipment and therapies • Advances in training of niche-specialized healthcare professionals in the country • Greater drive by both county and national governments to upgrade these facilities • High rate of population growth 	<ul style="list-style-type: none"> • Extremely high numbers of patients, straining the available infrastructure and resources • Disproportionate healthcare professionals to patient's ratio • Inadequate medical supplies • Little adoption of new technologies relevant to provision of modern healthcare • Unaffordability of specialized care and advanced medical procedures • Inappropriate working conditions for personnel and subordinate staff 	<ul style="list-style-type: none"> • Increase the number of beds in hospitals • Strive towards reaching the WHO recommended professional to patient ratio. • Frequent refresher courses for medical professionals • Adequate annual budgetary allocation for medical supplies • Improve working conditions for personnel • Subsidize the cost of specialized services to increase accessibility by low income earners
Education	<ul style="list-style-type: none"> • Increasing population 	<ul style="list-style-type: none"> • High teacher-student's ratio 	<ul style="list-style-type: none"> • Strengthen staffing levels

	<ul style="list-style-type: none"> • Education has been largely embraced • Government policy on compulsory basic education • Free primary and day secondary school education 	<ul style="list-style-type: none"> • Low retention of pupils in schools • Poor or inadequate infrastructure in terms of classrooms and equipment • Low transition rates from Primary to secondary schools • Challenges in acquisition of land for expansion of learning institutions • Inadequate Technical Vocational Education and Training Institutions (TVET) in the County 	<ul style="list-style-type: none"> • Development and upgrading of education Infrastructure • Domestication of the ECDE Policy • Establishing County Libraries • Embrace new technologies in education • Improve existing education facilities.
--	---	--	---

Area 4: Urbanization

Potentials/Opportunities	Issues	Strategies
<ul style="list-style-type: none"> • Human resource (both skilled and unskilled) • Enabling policy framework • Existing infrastructure • Devolution 	<ul style="list-style-type: none"> • Rapid urbanization rates • Deteriorating infrastructure • Gentrification • Weak and uncoordinated development control and enforcement systems. • Lack of enforcement of existing legislation on housing development and land use • Little government involvement in housing provision which has left in the hands of private developers. • Lack of appropriate transport infrastructure and utilities • Poor implementation of development plans and planning policies • Poor solid waste management • Land and governance issues. 	<ul style="list-style-type: none"> • Enforce, harmonize and regularly review the existing legislative and regulatory instruments • Bridge the Gap between housing demand and supply • Provide adequate and appropriate infrastructure • Government and/or PPP to provide site and serviced properties • Impose a progressive tax over and above the current land rents and rates on vacant urban land • Operationalize sectional titling to provide shelter other than land. • Encourage pooling of land for bulky housing.

4.2 National Spatial Plan Policy Guidelines and Measures for Nairobi County

The National Spatial Plan has stipulated policies to provide a foundation upon which to anchor the strategies enumerated therein. The primary aim is to inculcate discipline in the use of land and natural resources of the country thus stemming duplication and wastage of the resources.

This section seeks to provide the spatial policy guidelines and measures aimed at promoting the achievements of the objectives of the National Spatial Plan using its guidelines. They aim at enhancing global competitiveness and economic efficiency, optimizing the use of land and natural resources, promoting the regional balanced development and conservation of the environment. These policies are supported by a wide range of measures which spell out the specific actions to be undertaken to actualize the policy intentions. The policies shall ensure that the county is globally competitive as an investment especially in emerging sectors such as the ICT. The policies shall also be implemented by the county government's agencies responsible for physical planning and development control as well as the authorities responsible for land administration.

The following are the policies and measures specific to Nairobi City County.

Table 4: Policy Guidelines and Measures

S.No	Sector	Policy Guideline	Measures
1	Framework for Development of Spatial Growth Regions	<ul style="list-style-type: none"> • Enhance Urban agricultural production and value addition • Intensive land use • Environmental conservation • Densification of built-up areas • Investment in social and physical infrastructure 	<ul style="list-style-type: none"> • Infrastructure provision to support value addition initiatives and human settlement • Development and rehabilitation of key infrastructure in underserved locations • Services to under-served populations • Environmental protection • Conservation of wildlife, water and forest resources
2	National Spatial Structure	<ul style="list-style-type: none"> • The National Spatial Plan shall be the basis for the preparation of lower tier development plans to achieve integrated and sustainable land use planning 	<ul style="list-style-type: none"> • All Regional, County and Local physical/spatial plans shall be guided by the objectives and policies of the NSP. • Existing physical/spatial plans shall be reviewed to conform to the objectives and policies of NSP. • All sectoral policies shall take cognizance of the objectives and policies of NSP • The review of the 5 year medium term plans (MTP's) shall take into account provisions of the NSP. • Planning authorities at the national and county levels shall be supported with adequate human, financial and technical resources to promote sustainable Physical/spatial planning and development.
3	Conserving the natural environment	<ul style="list-style-type: none"> • All environmentally sensitive areas shall be protected and utilized in a sustainable manner • All government agencies shall integrate environmental concerns in policy formulation, 	<ul style="list-style-type: none"> • Prepare and implement integrated management plans for Environmental sensitive areas • Involve and empower communities in the management of environmentally sensitive areas and promote environmental education and awareness • Adopt appropriate land use planning and watershed management practices for sustainable development

		<p>resource planning and development processes</p> <ul style="list-style-type: none"> • Community participation shall be mainstreamed in the protection and conservation of natural resources • County Physical Planning department shall mainstream climate change into its planning processes 	<ul style="list-style-type: none"> • Promote sustainable waste Management and Pollution Control • Identify species which are rare and endangered with the aim of protecting them from extinction • Develop and implement harmonized regional plans for sustainable management of trans-boundary resources • Implement the National Climate Change Strategy and the National Climate Change Action plan <p>Strengthen Environmental Governance and harmonize sectoral policies, legislation and regulations</p> <ul style="list-style-type: none"> • Prepare and implement an industrial master plan • Promote value addition in processing of local produce • Integrate the industrialization process and environment conservation • Provide an integrated, efficient, reliable and sustainable transport and energy infrastructure • Adopt renewable energy generation programmes • Promote the adoption of energy efficient technologies to lower the demand for energy
4	Rapid Industrialization	<ul style="list-style-type: none"> - The cluster development strategy shall be promoted to focus on proximity to raw materials and markets of region specific products - Specific sites for industrial development shall be identified, planned and serviced with the appropriate infrastructure 	<ul style="list-style-type: none"> • Prepare subject plans for the wildlife habitats • Prohibit the location of incompatible land use activities next to tourists' sites • Regulate developments within the tourist attraction sites

		<ul style="list-style-type: none"> - Adequate and affordable energy supply for the industrial sector shall be provided 	
5	Diversifying Tourism (Central and Great Rift Valley Tourism Circuit)	<ul style="list-style-type: none"> • Tourist attraction sites shall be protected and conserved 	<ul style="list-style-type: none"> • Develop the requisite tourism support infrastructure and facilities • Upgrade the existing tourism facilities and infrastructure and invest in more
		<ul style="list-style-type: none"> • Appropriate Tourism support infrastructure and facilities shall be provided 	<ul style="list-style-type: none"> • Identify and map potential tourism development sites • Facilitate access to tourism development incentives
		<ul style="list-style-type: none"> • Governance of tourism shall be enhanced 	<ul style="list-style-type: none"> • Develop the requisite tourism support infrastructure and facilities • Upgrade the existing tourism facilities and infrastructure and invest in more
		<ul style="list-style-type: none"> • Appropriate tourism support infrastructure and facilities to be provided 	<ul style="list-style-type: none"> • Central and Great Rift Valley Tourism Circuit traversing through the county to be planned and developed to offer eco-tourism, ecology/study tourism, sports, cultural and heritage tourism, medical tourism, conference tourism exhibition and agro-tourism
		<ul style="list-style-type: none"> • Diversification of tourism products shall be enhanced 	<ul style="list-style-type: none"> • Prepare and implement local physical development plans to define the urban growth limits for the principal urban centres • Enforce strict regulations and justifications on development control processes. • Provide requisite infrastructure to support growth and development. • Incorporate disaster management and mitigation in planning of human settlements.

			<ul style="list-style-type: none"> • Plan and provide an integrated waste management system. • Build institutional capacities of the urban areas management boards
6	Managing Human Settlements	<ul style="list-style-type: none"> • Existing urban areas shall be subjected to strict development control to curtail encroachment on other high potential land uses • Human settlements shall be developed in line with environmental and natural resources conservation • Provision of an efficient, reliable and effective transport system for human settlements • The management and governance of Human settlements shall be improved. • Advocate for upgrading of the existing settlements and forestalling of new informal settlements • Peri-urban development shall be managed 	<ul style="list-style-type: none"> • Provide access and linkage, between county headquarter and sub-county headquarters and link them to national transportation corridors • Adopt transit oriented development in the planning, design and development of all public urban transport • Integrate land use with urban transport planning • Design and develop integrated transport networks that considers all different modes of transport for all people • Establish a comprehensive transport management information system for all transport modes • Develop a public transport policy to regulate planning and management of public transport
7	Integrating the Transportation network	<ul style="list-style-type: none"> • An integrated and functional transport system for the county shall be developed • An urban transport policy that facilitates an integrated, 	<ul style="list-style-type: none"> • Mainstream and enforce green energy options in the design of buildings • Increase access to electricity through upgrading and expansion of the national power transmission and distribution network

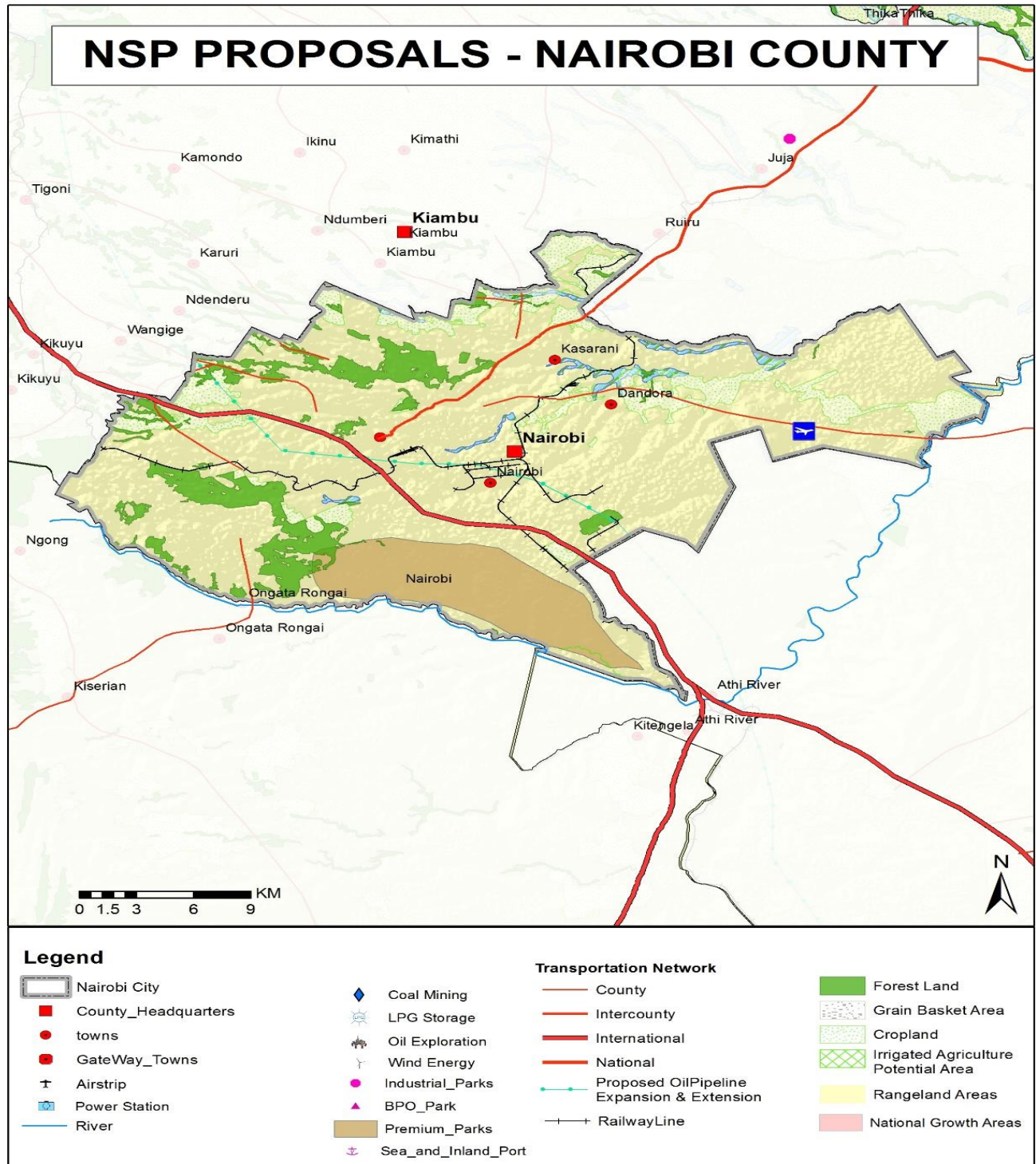
		<p>balanced and environmentally sound urban transport system in which all modes efficiently play their roles shall be developed</p> <ul style="list-style-type: none"> • Environmental conservation shall be upheld in the planning, development and management of the transportation network <p>An efficient and affordable Mass Public Transport for all urban areas in the country shall be developed</p>	<ul style="list-style-type: none"> • Restore all the water towers. • Build water kiosks and yard taps, develop water supply pipeline systems and sewers, and a comprehensive mapping of all water supplies systems in the informal settlements • All universities and other tertiary institutions to invest in research, technology and innovation • Develop and upgrade physical infrastructure in all education institutions to increase their capacity • Strengthen outreach systems for provision of health services to marginalized and vulnerable population • Provision of quality emergency health services at the point of need • Develop and upgrade ICT Infrastructure to cover all the rural and local growth centres • Mainstream use of ICT in all levels of government and the private sector (e-government) • All spatial plans to make provision for development of sewer systems and treatment works and solid waste disposal sites • Adopt appropriate technology to facilitate reduction, recycle and reuse of waste (3r's) <p>Establish County Sports Talent Centers to nurture and develop sports talents in the county</p>
		<ul style="list-style-type: none"> • Safe, adequate, reliable and affordable electricity for both urban settlements shall be provided • Expansion and improvement of water reticulation systems to 	<ul style="list-style-type: none"> •

		<p>facilitate the access to clean, safe, adequate, reliable and affordable water in human settlements shall be promoted</p> <ul style="list-style-type: none"> • A globally competitive, accessible and affordable higher education, training and research facilities shall be promoted • A network of functional, efficient, safe, accessible and sustainable county health referral infrastructure shall be established • Appropriate, quality, efficient and cost effective ICT infrastructure in county shall be promoted • The expansion of sewerage systems and waste management facilities shall be promoted to improve sanitation in human settlements • Sporting infrastructure shall be planned, developed, maintained and the existing rehabilitated to promote sports development 	
--	--	--	--

Source: State Department of Physical Planning, 2022

Map 3 below shows the NSP proposals for the Nairobi City County.

Map 3: NSP Proposals for Nairobi City County



Source: National Spatial Plan, 2015

5 IMPLEMENTATION AND ADOPTION OF THE GUIDELINES

5.1 Overview

The implementation framework identifies activities and further ties them with responsible actors, resources and timeframes adequate for their execution. It constitutes a deliberately established method, means or system of ensuring that the policies, strategies and measures outlined in the guidelines are continuously and consistently executed to achieve their objectives.

To effectively implement the guidelines, the various sectors, actors and levels of planning have been identified and have to work together and the mandate of the sectors at the National and County levels of planning have to be integrated.

5.2 Implementation Approaches

The County Specific Guidelines will be implemented through various approaches including:

1. Preparation of spatial plans to integrate and conform to the proposals of the County Guidelines. The plans include:
 - Inter-County Physical and Land Use Development Plans for Metropolitan regions, conservation zones, river basins, water towers, coastal ecosystems, trans-boundary resource areas and transport corridors, among others.
 - County Physical and Land Use Development Plans.
 - Local Physical and Land Use Development plans for Cities, Urban areas, special area plans, subject plans and detailed neighbourhood plans, among others.
 - Sectoral plans
2. Integration of the guideline policies, strategies and measures into the County sector plans, programs and projects. Ministries, Departments and Agencies (MDAs), County and National Departments identified in the plan to administer the policies, strategies and measures are required to translate them into action plans, programmes and projects and to include them in their subsequent sector plans.
3. Formulation of policies, regulations and standards to guide development control

5.3 Implementation Framework

The implementation of the various policies, strategies, measures, programmes and projects under these Guidelines will involve a wide range of actors. It will require a coordinated approach and partnership between the National and County Governments and non-state actors. It may require re-engineering of institutions and a number of actors to undertake the implementation through a harmonized approach.

The National Spatial Plan identified a multi-leveled framework for implementation of the plan that incorporates all levels of actors. In this regard, the institutions identified in the NSP to undertake implementation of the plan at County-level shall also be mandated to ensure implementation of this Guidelines.

The following are the Institutions mandated to ensure implementation of the County Specific guidelines;

5.3.1 County Physical Planning Committee

The role of the County Planning Committee shall be to ensure aspirations of the guidelines are articulated in preparation of the County Spatial Plans, County Integrated Development Plans and Local Physical and Land Use Development Plans.

The composition of this committee consists of;

- i. The Governor who will be the Chairperson,
- ii. the Deputy Governor,
- iii. the County Executive Committee Members from various sectors
- iv. Directors from various relevant County Departments including Lands and Physical Planning, Economic planning, Agriculture, Industrialization, Tourism, Environment, Transport and Infrastructure

The functions of the committee include;

- 1) To promote effective integration between physical, economic and sectoral planning within the framework of county development policies.
- 2) To provide policy guidance for the implementation of strategic spatial projects
- 3) To ensure that the guidelines policies and measures are mainstreamed in the various county plans.
- 4) To mobilize resource for implementation of the Guidelines.

5.3.2 County Planning Unit (CPU)

The technical Unit shall provide technical support to the various implementing County departments on issues relating to physical planning.

The CPU shall;

- i. Monitor the Implementation of the guidelines.
- ii. To disseminate components of the guidelines to the various county departments.
- iii. Update the County Physical Planning Committee on a regular basis on the implementation of the guidelines.

The County Director of Physical Planning shall be responsible for preparation of an annual state of planning report which shall among other things appraise the status of implementation of the guidelines.

5.3.3 National Land Commission

The National Land Commission shall play its oversight role in land use planning to ensure efficient implementation of the NSP and the guidelines. Other functions of the Commission in the implementation of the NSP and the guidelines include the following:
- To formulate mechanisms and parameters for monitoring and overseeing land use planning.

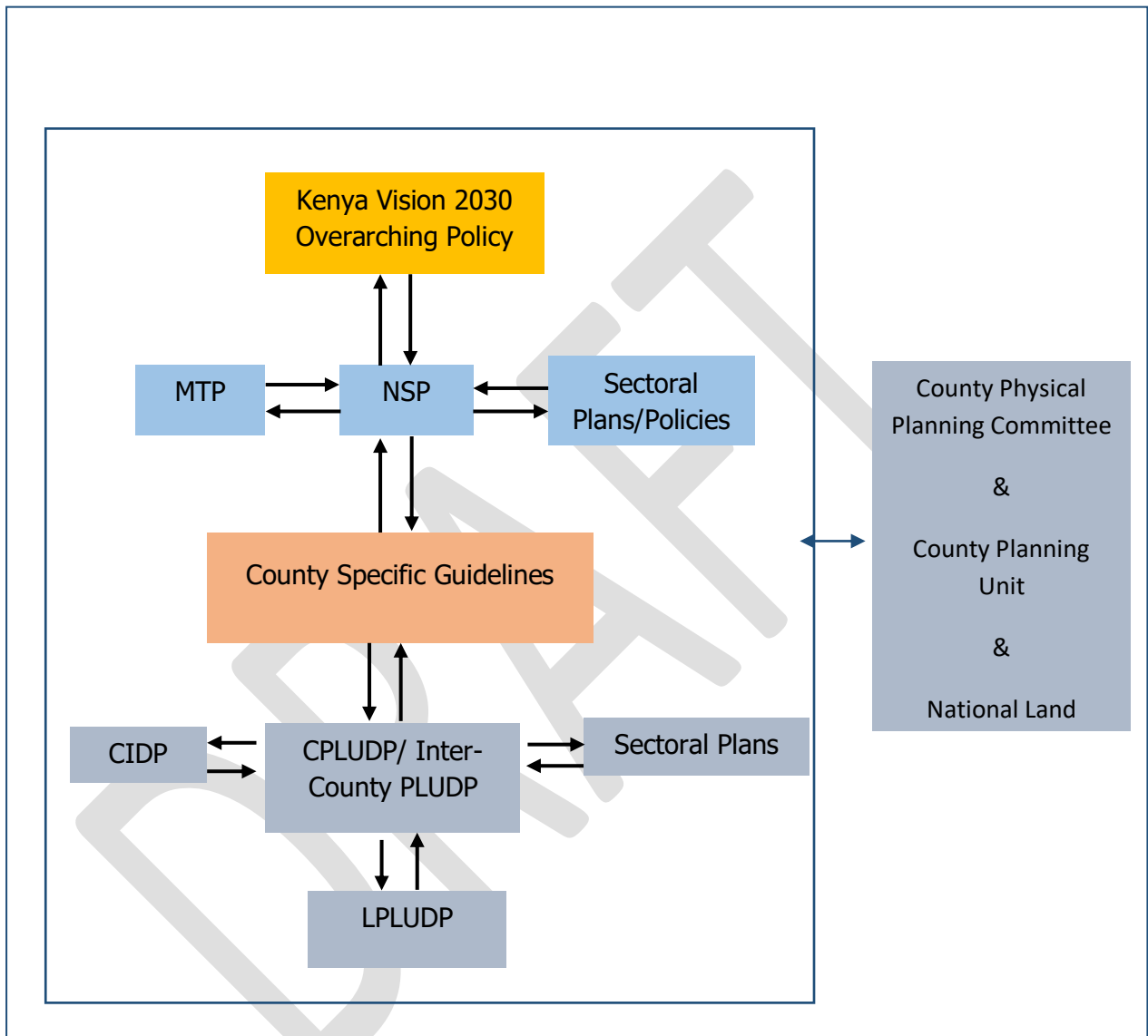
- i. To ensure that relevant planning authorities carry out their functions as required by law.
- ii. To make recommendations for improvements of the planning systems in the county.
- iii. To mobilize resources to support physical/land use planning.

5.4 Monitoring and Evaluation

Implementation of the guidelines will be monitored and evaluated to measure both outputs and outcomes and ensure that the intended actions are implemented in a timely manner. To facilitate attainment of the objectives of the guidelines, performance indicators will be developed by the County Physical Planning Department for efficient monitoring. Periodic reports will be prepared in relation to progress being made in their implementation.

The graphic below illustrates the implementation structure for County Specific guidelines.

Figure 4: Implementation structure of the guidelines



Source: State Department for Physical Planning, 2022

5.5 Conclusion

The application of these guidelines will be undertaken by a number of actors and hence the need for a coordinated approach. The lead agency will be Bomet County Government which will be responsible for implementing various county specific initiatives proposed by the guidelines.

The National Government, County Government of Bomet, the private sector and the general public will be critical in actualizing the objectives of these guidelines. The County Physical Planning Committee shall develop a communication strategy to enhance the synergies.

The National Department of Physical Planning shall undertake sensitization, training and capacity building of the County Government and National Government institutions and agencies that will be involved in the implementation of these guidelines. Special attention will be given to the County physical planning units, as they will be expected to provide technical expertise in the implementation of the County specific policies and strategies.

DRAFT