



NATIONAL SPATIAL PLAN IMPLEMENTATION GUIDELINES FOR NAKURU COUNTY

**Optimal productivity, sustainability, efficiency and equity in use of
our land and territorial space**



JUNE 2022

MINISTRY OF LANDS AND PHYSICAL PLANNING
STATE DEPARTMENT FOR PHYSICAL PLANNING

Kenya 
VISION 2030

FOREWORD

The Constitution of Kenya apportions responsibility of planning to both National and County Governments. Under the Fourth Schedule on distribution of functions, Part 1 (21) and (32) mandates the National Government with the responsibility of formulating general principles of land planning, co-ordination of planning by the Counties, capacity building and technical assistance to the Counties. On the other hand, Part 2(8) allocates the function of County planning and development to County Governments. It is under these provisions that the County specific guidelines have been prepared.

The Department of Physical Planning prepared the National Spatial Plan (NSP) in response to the Kenya Vision 2030 to guide the spatial development of the country over a period of 30 years beginning in 2015.

It aims at achieving an organized, integrated, sustainable and balanced development of the country by providing a framework for better national organization and linkages between different activities within the national space.

To implement the Plan, the Counties are expected to play a key role by mainstreaming strategies, policies, and measures identified in the NSP into the County spatial planning systems.

The guidelines have identified planning policies, strategies, and measures that Plans at the County level are expected to mainstream and propagate. The policies address among others, the protection of rich agricultural land, development imbalances, conservation of environmentally sensitive areas, urban containment, and promotion of industrial development.

The guidelines provide direction on the existing potentials, the opportunities, the constraints/challenges inhibiting harnessing of the potentials, the strategies to apply, respective policies required, and the necessary measures to achieve optimal productivity, sustainability, efficiency and equity in the use of county land resources.

The guidelines are an opportunity on how best to refocus, vary and complement areas that require different approaches responding to country-specific needs and promote the

livelihoods of their people, while contributing to the national aspirations of vision 2030, regional objectives of the Africa Agenda 2063, and international targets of sustainable development. The refocusing will also be handy in reviewing and making decisions on NSP which is due for review in 2025.

These guidelines are therefore a tool for enhancing this critical path and provide a direction for development planning by the Counties as they discharge their responsibility of preparing county and local physical and land use development plans. The guidelines will also ensure that the County Integrated Development Plans conform to the proposed County specific policy guidelines and measures.

DRAFT

PREFACE

The National Spatial Plan(NSP) recognizes that Kenya is greatly endowed with massive and diverse resources distributed over the national space that require an integrated and coordinated approach for optimal productivity and sustainability.

The County Specific Guidelines have been derived from the National Spatial Plan and provide a planning framework for the integration of the NSP into the county spatial planning system. They are clear statements linking the National Spatial Plan to Inter-County, County and lower-level Physical and Land Use Development Plans and provide clarification on the anticipated sustainable development outcomes of implementing the Plan.

The County Government will adopt, develop and implement their plans based on the policies, strategies, and measures articulated in the guidelines. The realized county plans are expected to guide, harmonize and facilitate development within the county, hence contributing to the overall implementation of the NSP.

The guidelines also form an efficient compass and monitoring tool for National and County Governments to jointly pursue sustainable planning and appropriate implementation mechanisms.

For the county to be nationally competitive, there is need to balance development and promote optimal utilization of land and land-based resources as well as cultivate an integrated approach in addressing the intertwined challenges of regional imbalances/inequalities, rural development, underutilization of the available resources, uncontrolled urbanization, environmental degradation and inefficient transportation. It is imperative therefore, to prioritize the implementation of this strategic document so as to promote balanced development and competitiveness across the county

EXECUTIVE SUMMARY

The County Specific Guidelines seek to facilitate the implementation of the National Spatial Plan by outlining policies, strategies and measures to guide County spatial planning and development and promote optimal productivity, sustainability, efficiency and equity in the use of land. They provide a framework for preparation of lower level Plans including Inter-County, County and Local Physical and Land Use Development Plans.

The disconnect between National and County Spatial Planning and development has resulted in uncoordinated and unbalanced development, therefore creating a need for a clear structure that links National, Regional and Local planning and development. This is achievable through integration of the policies, strategies and measures proposed by the guidelines into County Spatial Plans, Programs and Projects, to tackle challenges of unbalanced regional development, urbanization, national competitiveness and unsustainable use of land and natural resources.

The County Specific Guidelines are organized into five chapters detailing various facets. Chapter one provides an overview, purpose and justification of preparation of the guidelines. It also outlines the objectives that the guidelines intend to achieve and details the preparation process as well as intended users. This chapter highlights the key principles that form the basis for preparation of lower level plans including public participation, livability, sustainable development, urban containment, smart urban growth among others.

Chapter two details the legal and policy provisions that the guidelines are anchored upon. They include, among others, The Constitution of Kenya, 2010, The Physical and Land Use Planning Act No.13 of 2019, County Government Act, 2012, Environmental

Management and Coordination (Amendment) Act, 2015, Sessional Paper No. 01 of 2017 on National Land Use Policy and Sessional Paper No. 10 of 2012 on Kenya Vision 2030.

The third chapter analyses the county profile, detailing its location, size, bio-physical characteristics, socioeconomic status and the County's comparative advantage in relation to others. The locational context provides information on the geographical position and bordering Counties while the biophysical context discusses the topography, hydrology and climate. The socioeconomic status indicates key economic drivers of the County and its population and demographic structure.

Chapter four presents the County specific issues and proposes development strategies to promote national competitiveness, optimal use of land and resources, rural development, balanced intra-county development and urbanization. Additionally, it provides policy guidelines and measures for County advancement.

The final chapter five focuses on implementation and adoption of the guidelines. The implementation framework identifies institutions, County development programs and projects, and further ties them with responsible actors, resources and timeframes for effective execution. It proposes a framework for ensuring that the outlined policies, strategies and measures are adequately implemented.

Table of Contents

FOREWORD	i
PREFACE	Error! Bookmark not defined.
Table of Contents	i
List of Maps	iv
List of Tables	iv
List of Figures	iv
INTRODUCTION	5
1.1 Background.....	5
1.2 Purpose	5
1.3 Objectives	5
1.4 Scope	6
1.5 Justification.....	7
1.6 Application of the Guidelines	7
1.7 Process of Preparing the Guidelines	8
1.8 Targeted users of the Guidelines	9
1.9 Key Principles	10
2 THE POLICY, LEGAL AND PLANNING FRAMEWORK FOR THE GUIDELINES 12	
2.1 Constitutional Context.....	12
2.2 Policy Framework	12
2.2.1 Sessional Paper No. 10 of 2012 on The Kenya Vision 2030	12
2.2.2 Sessional Paper No. 1 of 2017 on National Land Use Policy	12
2.2.3 Sessional Paper No. 3 of 2009 on National Land Policy (NLP)	12
2.3 Legal Framework	13

2.3.1	The Physical and Land Use Planning Act, 2019	13
2.3.2	County Governments Act, 2012	13
2.3.3	Urban Areas and Cities (Amendment) Act, 2019	13
2.3.4	Environmental Management and Coordination (Amendment) Act, 2015	14
2.3.5	National Land Commission Act, 2012	14
2.4	Planning Context	14
2.4.1	National Spatial Plan (NSP)	14
2.4.2	NSP Linkage to Other Plans	15
3	COUNTY PROFILE	17
3.1	Overview	17
3.2	Locational Context	17
3.3	Bio-Physical Characteristics	19
3.4	Socio-economic Background	19
3.4.1	Population and Demography	19
3.4.2	Economy	20
3.4.3	Physical Infrastructure	20
3.4.4	Public Utilities	21
3.5	Nakuru County’s Comparative Advantage	23
4	DEVELOPMENT STRATEGIES AND POLICY GUIDELINES FOR NAKURU COUNTY	26
4.1	County Specific Issues and Development Strategies	26
4.2	National Spatial Plan Policy Guidelines and Measures for Nakuru County	36
5	IMPLEMENTATION AND ADOPTION OF THE GUIDELINES	44
5.1	5.1 Overview	44
5.2	Implementation Channels	Error! Bookmark not defined.

- 5.3 Institutional Framework for Implementation**Error! Bookmark not defined.**
- 5.1.1 5.3.1 National Physical Planning Council **Error! Bookmark not defined.**
 - 5.1.2 5.3.2 National Technical Committee ..**Error! Bookmark not defined.**
 - 5.1.3 5.3.3 County Physical Planning Committee **Error! Bookmark not defined.**
- 5.4 Conclusion.....**Error! Bookmark not defined.**

DRAFT

List of Maps

Map 1: Location of Nakuru County	17
Map 2: Existing Situation in Nakuru County	22
Map 3: NSP Proposals for Nakuru County	43

List of Tables

Table 1: Targeted users of the guidelines	9
Table 2: Population projection up to the year 2045	19
Table 3: County Sector specific issues and strategies	27
Table 4: NSP Policy Guidelines and Measures for the County	37
Table 5: NSP Implementation Approaches	Error! Bookmark not defined.

List of Figures

Figure 1: The Scope of the Guidelines	7
Figure 2: Policy Focus of the NSP	14
Figure 3: NSP Linkage to other Plans.....	15
Figure 4: Integrated NSP Implementation Organization Structure	Error! Bookmark not defined.

1 INTRODUCTION

1.1 Background

The County Guidelines set out policies, strategies and measures that will guide the long-term spatial development of the county for a period of 30 years. They cover the entire county and defines the general trend and direction of its spatial development.

The guidelines have been developed in line with the four thematic areas as outlined in the NSP. They provide a guide to the Planning Authority at the county on how to incorporate the NSP policies, strategies and measures during the preparation of County Spatial Plans and other lower level plans like the Local Physical and Land Use Development Plans consequently implementing the NSP.

The NSP County Specific implementation guidelines summarize the County's existing potentials and opportunities, the constraints (challenges) inhibiting harnessing of the potentials, the applicable strategies and respective policies required, and the necessary measures to achieve optimal productivity, sustainability, efficiency and equity in the use of the county land resources. They act as a reference point

1.2 Purpose

The purpose of the County Specific Guidelines is to provide a planning framework for mainstreaming of the National Spatial Plan to the County spatial planning system.

The guidelines are intended to assist the County enhance the implementation of the NSP by linking the proposed county specific policies, strategies and measures into the County plans, programs and projects while putting measures in place for achieving them. The guidelines inform preparation of various County Physical Plans such as the County Physical and Land Use Development Plans.

For optimal implementation of these plans, a County Integrated Development Plan (CIDP) is essential since it is a sectoral and budgetary based plan that draws its implementation programs and projects from the County Physical Plans.

1.3 Objectives

The guidelines provide policies, strategies and measures to deal with challenges of regional imbalances/inequalities, rural development, underutilization of the available resources, urbanization, environmental degradation and inefficient transportation.

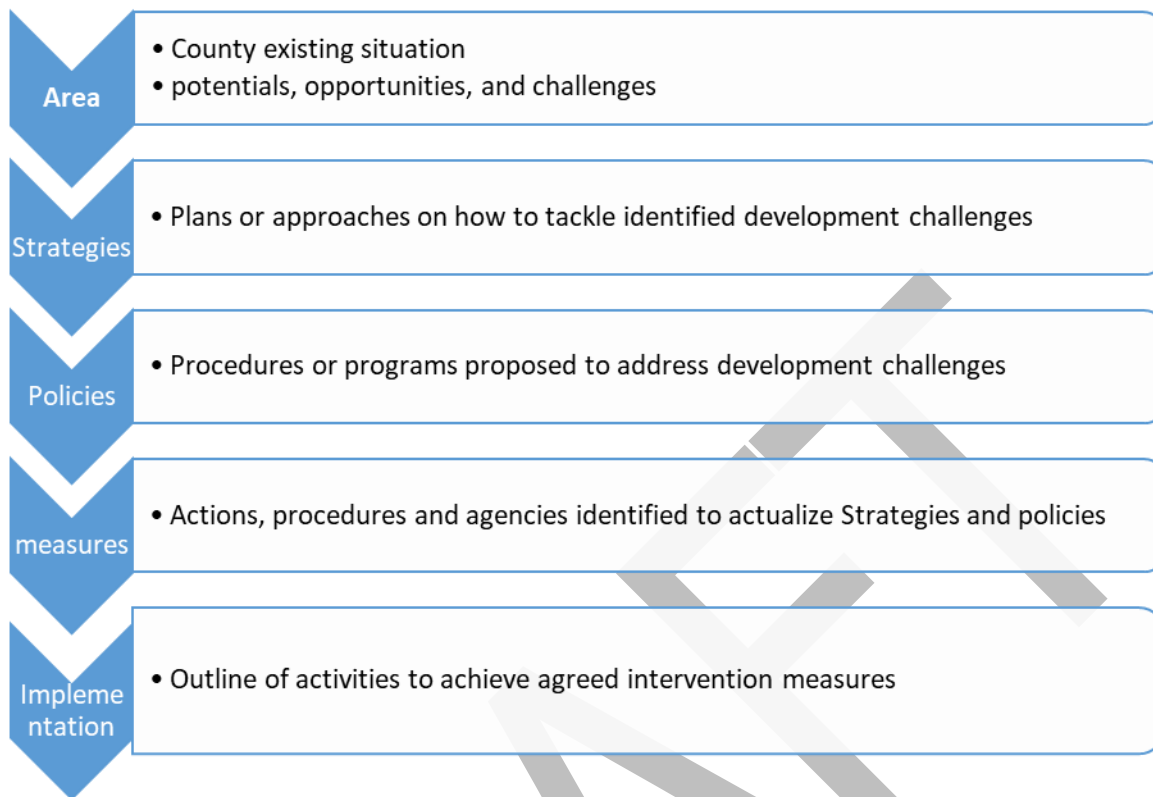
Specifically, the objectives are;

1. To sensitize the County on the provisions of the NSP
2. To promote synergy between National and County planning
3. To guide the County, implement the NSP
4. To identify the roles of the different actors in the implementation of the NSP.

1.4 Scope

The guidelines comprise policies, strategies and measures specific to Nakuru County covering approximately 7,498.8 km². The guidelines highlight the County's existing potentials and opportunities, the constraints (challenges) inhibiting harnessing of the potentials, the applicable strategies and respective policies required, and the necessary measures, actions, approaches, plans and procedures prescribed to achieve optimal productivity, sustainability, efficiency and equity in the use of the county's land resources and an outline of activities to execute agreed interventions as captured in the National Spatial Plan, as indicated in Figure 1 below. These guidelines are effective up to the year 2045.

Figure 1: The Scope of the Guidelines



Source: State Department for Physical Planning, 2022

1.5 Justification

Since the approval and launch of the NSP, its implementation has been undertaken in an uncoordinated manner hence the guidelines will provide a standardized approach for all Counties. The guidelines are also an important tool for tracking and evaluating implementation of the NSP both at National and County levels.

The preparation of County Spatial Plans and other lower-level plans which is a mandate of Counties has been slow and, in some Counties, has not begun at all. These guidelines are therefore a quick reference in preparation of county plans and for some Counties to help optimize land in the absence of these plans.

1.6 Application of the Guidelines

The guidelines and strategies will be used or applied in the following ways to achieve a more sustained and coordinated development of the County;

- To effectively coordinate planning between the National and the County Government;
- To improve County Government capacity to formulate, coordinate and implement integrated development policies and programmes to address spatially unbalanced development;
- To inform strategic infrastructure policy and public investment decisions which support the achievement of balanced development in the county;
- To strengthen County inter-sectoral coordination within a spatial framework and provide the private sector with a clear context in which they can make investment decisions;
- To optimize the use of land and natural resources by providing a framework for making sustainable locational choices for sustainable development and conservation of land productivity in the County.

1.7 Process of Preparing the Guidelines

The process involved reviewing the National Spatial Plan and identifying key issues, spatial policies, development strategies and measures specific to Nakuru County. These key issues, spatial policies, development strategies and measures will be realized through preparation of County and other lower-level plans.

Research was undertaken on various thematic areas to enrich the County specific issues and development strategies as well as policy guidelines and measures/ interventions. Further, preparation of the guidelines considered the constitutional, policy and legal provisions on physical and land use planning. Expert opinion was sought on the identified issues, policies, measures and strategies for implementation viability.

The preparation of the guidelines was identified as one of the implementation tools of the NSP, in which key NSP issues, policies, strategies and measures were translated into specific action plans, programs and projects at the County level.

1.8 Targeted users of the Guidelines

These Guidelines have diverse consumers and application depending on prevailing circumstances and actors as demonstrated in Table 1 below:

Table 1: Targeted users of the guidelines

User	Area of application
County Executive Committee Member in charge of Physical and Land Use Planning	<ul style="list-style-type: none"> • Preparation of county and lower-level plans • Linkage of planning structures • Quality control of the various county plans • Formulate county planning policies and strategies • Establish county specific planning institutions • Coordinate and implement county plans and policies
The County Director of Physical and Land Use Planning	<ul style="list-style-type: none"> • Advising the county government on the impact of the county specific guidelines to the county • Preparation of County physical and land use development plans and other lower level plans • Formulating County physical and land use planning policies, guidelines, strategies, and standards; • Issuance of development permission and other development control instruments under The Physical and Land Use Planning Act, 2013.
Licensed physical and land use planners both in public and private sectors	<ul style="list-style-type: none"> • Prepare, coordinate and implement spatial plans • Quality control of plans and consultancy services • Formulate policies, strategies and development guidelines • Dispute resolution
County assembly	<ul style="list-style-type: none"> • Approval of strategic sectoral budgets such as planning • Vetting of various county specific plans

	<ul style="list-style-type: none"> • Formulation and passing of county planning legislation • Enhance capacity to oversee the executive on spatial planning
Ministries, departments and agencies	<ul style="list-style-type: none"> • Mainstreaming relevant NSP policies, programs and projects • Allocation of resources to priority areas, • Strengthening linkages with spatial planning in resource management
The National Land Commission (NLC)	<ul style="list-style-type: none"> • Oversight role in land use planning to ensure efficient implementation of the NSP • Ensure relevant planning authorities carry out their functions as required by the law
Practitioners in the built environment	<ul style="list-style-type: none"> • Advance NSP relevant policies, programs and projects hence optimization of land resource • Appreciate sectoral Linkages to spatial planning • Facilitate incorporation of the policies, strategies and measures into, county specific plans
Community, developers and investors	<ul style="list-style-type: none"> • Comprehend the County priority sectors and County Plans and policies • Complement County spatial planning and implementation measures • Making informed investment decisions
Development partners	<ul style="list-style-type: none"> • Reference frame for selecting and funding spatial planning activities • Understand planning linkages and implementation • Informed development decisions
Training institutions	<ul style="list-style-type: none"> • Compliment the curriculum for training of spatial planners • Understand the planning procedures and processes

1.9 Key Principles

The principles, as applied in the NSP, should guide and form the basis upon which the lower-level physical and land use plans shall be prepared. Further the principles should ensure sustainable, coordinated, and realistic development. These include the following:

- 1. Effective Public participation/engagement:** All plans shall be prepared in a participatory and consultative manner with relevant stakeholders and sectoral actors.
- 2. Urban containment/Compact cities:** Local plans shall strive to limit and control urban growth within the set urban boundaries to protect rich agricultural land, mitigate urban sprawl and reduce cost of infrastructural provision.
- 3. Livability:** The planning of urban areas shall enhance the livability index in the area of housing, environment, transportation, health, and social engagement. The urban areas must be economically viable, socially inclusive and ecologically sustainable.
- 4. Smart and green urban growth:** Plans shall promote sustainable use of energy, creation of green spaces, reduce the need for car travel, and promote use of local materials, support businesses, protection of heritage and creation of unique character.
- 5. Sustainable development:** Balancing social, economic and environmental dimensions of development and catering for current and future generations.
- 6. Promotion of ecological integrity:** Plans shall promote the protection and conservation of environmentally sensitive areas.
- 7. Promote public transportation:** Favor public transportation over private transport to ensure efficiency and functionality of urban places.
- 8. Balanced development:** Plans to ensure there/ is balanced development in the County to cure inequalities.

2 THE POLICY, LEGAL AND PLANNING FRAMEWORK FOR THE GUIDELINES

2.1 Constitutional Context

The formulation of these guidelines took into account the Constitution of Kenya 2010 aspirations and Principles. Article 66 of the Constitution of Kenya 2010 gives the State powers to regulate use of any land and property in the interest of land use planning among others. The guidelines are therefore within and in response to the aspirations, values and principles as provided for in the constitution.

2.2 Policy Context

2.2.1 Sessional Paper No. 10 of 2012 on The Kenya Vision 2030

Kenya Vision 2030 is the overarching national development framework which all plans should be aligned to. The preparation of all spatial plans should take cognizance of the aspirations, foundations and development concepts of the vision. The preparation of the first National Spatial Plan is identified in Kenya Vision 2030 as a flagship project and is regarded as one of the foundations for socio-economic transformation. Hence the need for linkage between national planning and county planning which can be achieved through mainstreaming NSPs into CSPs and other lower-level plans by preparing NSP county specific guidelines to implement the NSP at lower levels.

2.2.2 Sessional Paper No. 1 of 2017 on National Land Use Policy

The policy was formulated to address the various challenges related to land use and ensure efficient, productive and sustainable use of land. The main goal of the policy is to provide legal, administrative, institutional and technological framework for optimal utilization and productivity of land related resources in a sustainable and desirable manner at National, County and community levels.

The policy recommends the preparation of a National Spatial Plan to provide an integrated framework for the development of the country including guidelines for

sustainable rural and urban planning management. The policy also provides for the preparation of planning guidelines, policies and standards to be observed by County Governments and other sectoral agencies within the frameworks of approved physical and land use development plans. These guidelines have been prepared on this basis and they are to be observed by counties in the implementation of the National Spatial Plan.

2.3 Legal Context

Several Acts of Parliament are in place to provide the legal framework for the implementation of the mandate provided for in Article 66 of the Constitution. The Physical and Land Use Planning Act, 2019, The Urban Areas and Cities (Amendment) Act, 2019, County Governments Act No. 17 of 2012, The Land Act No. 06 of 2012, National Land Commission Act No. 05 of 2012 among others. The NSP County specific guidelines are prepared in this context and meet this criterion.

2.3.1 The Physical and Land Use Planning Act, 2019

This is the overarching statute that provides for formulation of both National and County physical and land use planning policies, guidelines and standards. The Act further provides for administration, types, content, process and approval of the various types of Physical and Land Use Development Plans.

2.3.2 County Governments Act, 2012

This statute mandates County Governments to carry out the planning function at the county level. The guidelines enhance the capacity to prepare the various county level plans that meet the recommended quality and standards.

2.3.3 Urban Areas and Cities (Amendment) Act, 2019

The statute provides for classification of urban areas and cities, their governance and management, and for integrated development planning. The guidelines are a basis for preparation of these lower-level plans.

2.3.4 Environmental Management and Coordination (Amendment) Act, 2015

The Act provides for the establishment of an appropriate legal and institutional framework for the management of the environment as well as guidelines relating to environmental management and prevention or abatement of environmental degradation. The guidelines take cognizance of this Act and will be implemented within the framework.

2.3.5 National Land Commission Act, 2012

The Act mandates the National Land Commission with the management and administration of public land on behalf of the National and County Governments and to monitor and oversight physical and lands use planning in the country. The guidelines fall within the ambit of this statute and will facilitate their oversight responsibilities.

2.4 Planning Context

2.4.1 National Spatial Plan (NSP)

The National Spatial Plan (NSP) covers the whole country encompassing the exclusive economic zone. The NSP outlines policies and strategies geared towards influencing desired future distribution and organization of human activity outlined in Vision 2030 and sectoral policies and plans. It aims at achieving economic efficiency and balanced development. The various County Spatial Plans should be aligned to the policies outlined in the NSP as demonstrated in Figure 2 below.

Figure 2: Policy Focus of the NSP



Source: National Spatial Plan, 2015-2045

To actualize the NSP a comprehensive implementation strategy has been proposed that embraces a multiplicity of actors including National Government Ministries, Departments and Agencies, County Governments and the National Land Commission. The strategy proposes the establishment of the following institutions as key in the implementation of the Plan; The National Physical Planning Council, the National Technical Committee and the County Physical Planning Committee.

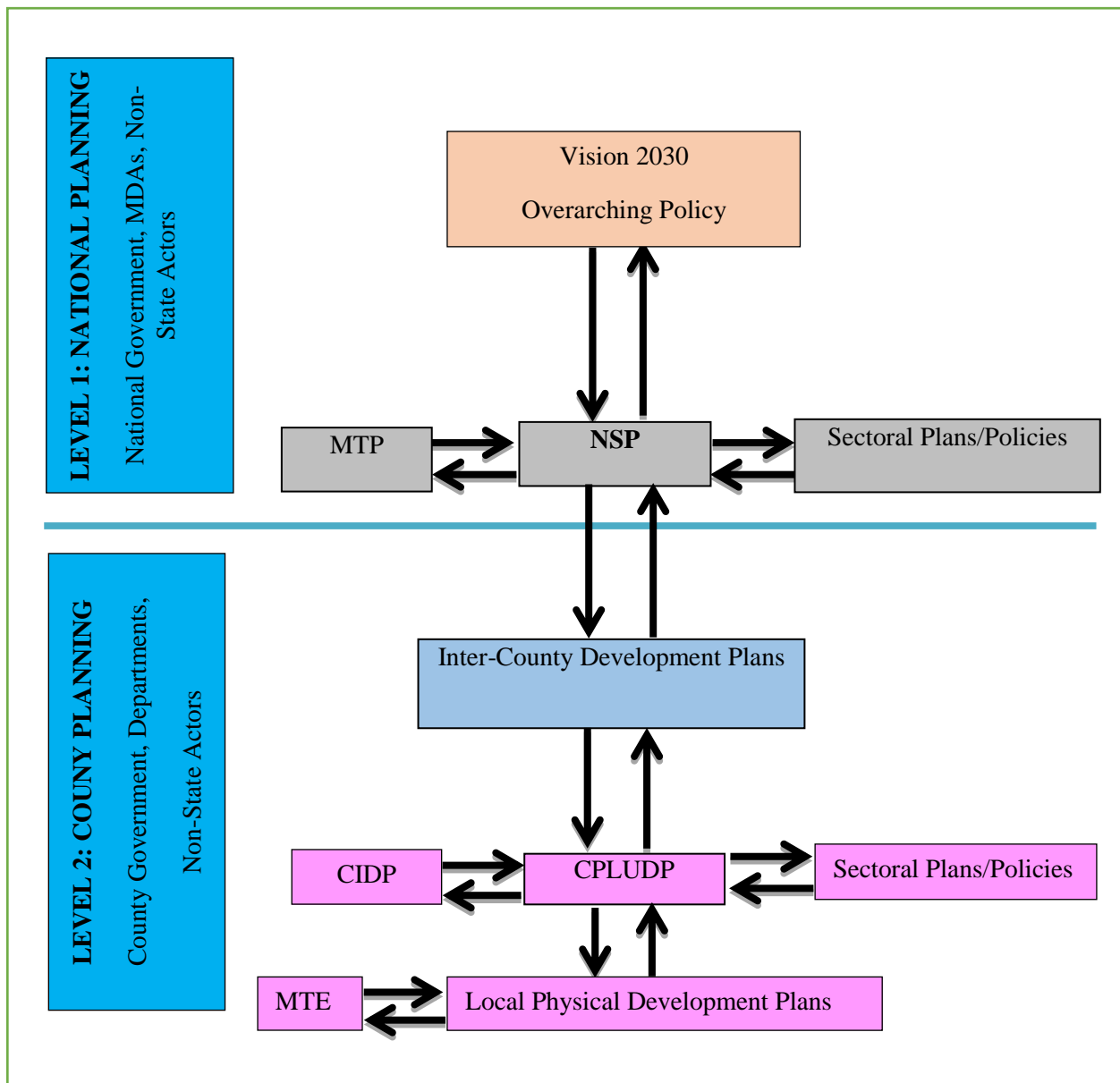
2.4.2 NSP Linkage to Other Plans

The linkage of the National Spatial Plan (NSP) to county and other lower-level plans is key to realization of its aspirations and the successful actualization of these plans. The NSP provides a spatial framework to ground the Vision 2030 flagships projects and form a basis for coordination of County policies, strategies, measures and plans.

Inter County and County plans take into considerations the policies, measures and strategies of the NSP and implements them actualizing its aspirations.

County Physical and Land Use Development Plans provide a framework where the CIDP draws its programs and projects. The implementation of the CIDP in turn leads to realization of the objectives of the County Physical and Land Use Development Plan.

Figure 3: NSP Linkage to other Plans



Source: National Spatial Plan, 2015-2045

3 COUNTY PROFILE

3.1 Overview

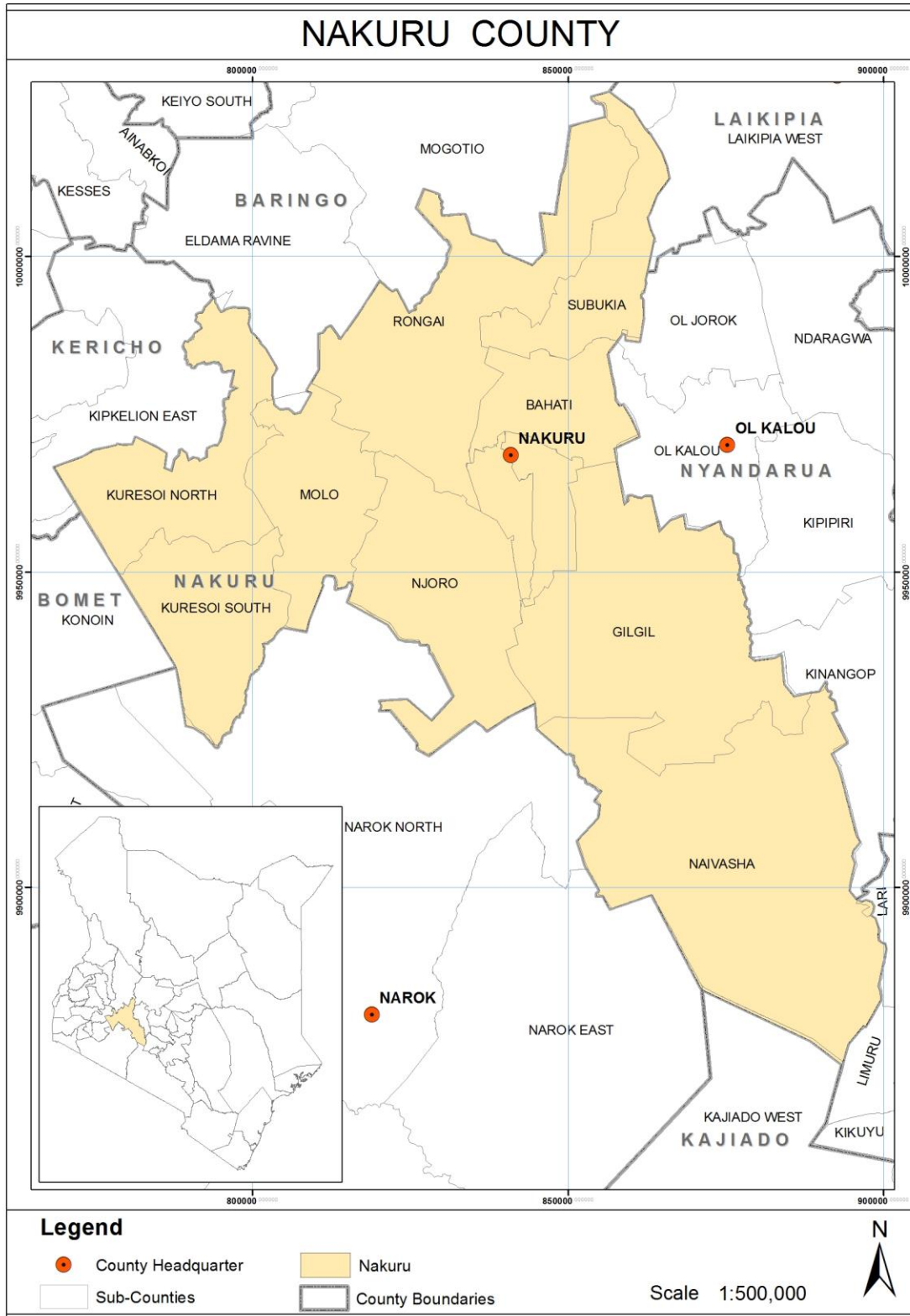
This chapter discusses a set of relevant information about Nakuru County. It provides information on the location of the County, size, bio-physical features, socioeconomic status and looks at the comparative advantage of Nakuru County as compared to other Counties of Kenya.

3.2 Locational Context

Nakuru County is located between Longitudes $35^{\circ} 24' 36''$ and $36^{\circ} 36' 0''$ East and Latitude $0^{\circ} 13' 48''$ North and $1^{\circ} 9' 36''$ South. The County covers an area of approximately 7,498.8 Km². It borders Laikipia County to the north-east, Kericho County to the West, Narok County to the south-west, Kajiado County to the South, Baringo County to the North, Nyandarua County to the East and Bomet County to the West. The County has 11 sub-counties and 55 wards.

Map 1 below shows the location of the County in national and regional context.

Map 1: Location of Nakuru County



Source: State Department for Physical Planning, 2022

3.3 Bio-Physical Characteristics

The main topographical features in Nakuru County are the Mau Escarpment covering the Western part of the County, the Rift Valley floor, Ol-Doinyo Eburru Volcano, Akira Plains and Menengai Crater. The County boasts of an elaborate drainage and relief system with various inland lakes on the floor of the Rift Valley where nearly all the permanent rivers and streams in the County drain into. These rivers include river Njoro and Makalia which drain into Lake Nakuru, Malewa which drains into Lake Naivasha and Molo River which drains into Lake Baringo among others. The altitude ranges between 986m and 2700m above sea level.

Nakuru County has predictable weather patterns with temperatures ranging between 10°C during the cold months (July and August) and 20°C during the hot months (January to March). The county receives between 700mm and 1200mm of rainfall annually, with average annual rainfall being an approximated 800mm. Nakuru has two rainy seasons; April, May and August (long rains) and October and December (short rains).

3.4 Socio-economic Background

3.4.1 Population and Demography

The population of Nakuru County was estimated at 2,162,202 (50.2 % Male and 49.8 % female) with a population density of 317.9 persons per square kilometer in 2019 (Kenya Population and Housing Census 2019). This population projected to expand to 4,721,995 by 2045. Table 2 below shows the projections for both males and females up to the year 2045.

Table 2: Population projection up to the year 2045

Year	2019	2020	2025	2030	2035	2040	2045
------	------	------	------	------	------	------	------

Population size	2,162,202	2,228,052		2,589,199		3,008,884		3,496,596		4,063,362		4,721,995	
		M	F	M	F	M	F	M	F	M	F	M	F
		1109 569	1118 482	1289 421	1299 778	1498 424	1510 460	1741 305	1755 291	2023 554	2039 808	2351 554	2370 441
House holds	616,046	636586		739771		859681		999027		1160961		1349141	
Area	7,462.4												
Density	290	299		347		403		469		545		633	

Source: State Department for Physical Planning, 2022

3.4.2 Economy

The main economic activities in the County are agriculture, tourism and financial services. Agriculture is influenced by the favorable climatic conditions while tourism is attributed to the presence of National parks and reserves, and lakes. The County hosts one of the largest cities (Nakuru city) in the Country and other urban areas such as Naivasha, Mai Mahiu and Molo which hosts numerous financial institutions that offer services to the residents.

3.4.3 Physical Infrastructure

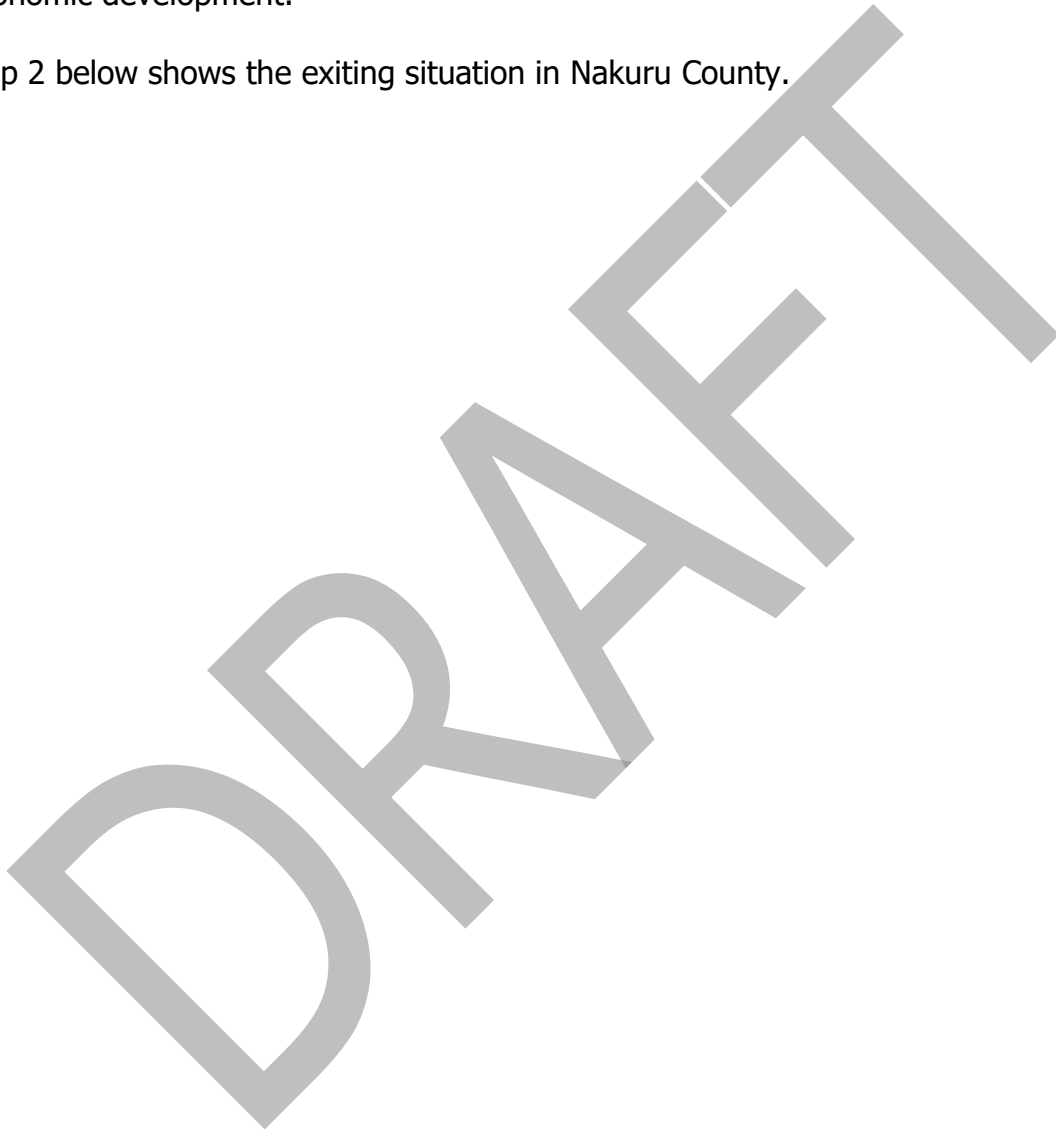
Infrastructure is key to the achievement of the National Spatial Plan objectives of global competitiveness, regional balance and optimal utilization of land and other resources. Nakuru has fairly developed infrastructure including transport, physical and social infrastructure which have a high potential of economically empowering its people and attracting private investors if well maintained. The sector faces problems regarding poor connection, low coverage, unreliability, high costs, skewed distribution and low/surpassed design. To rectify this situation clear indicative policy, strategies and measures have to be developed and implemented to achieve overall efficiency.

Road transport is the pre dominant transport mode in the County, with the main trunk road as the the A104 road connecting Mombasa-Nairobi-Nakuru-Eldoret-Uganda.

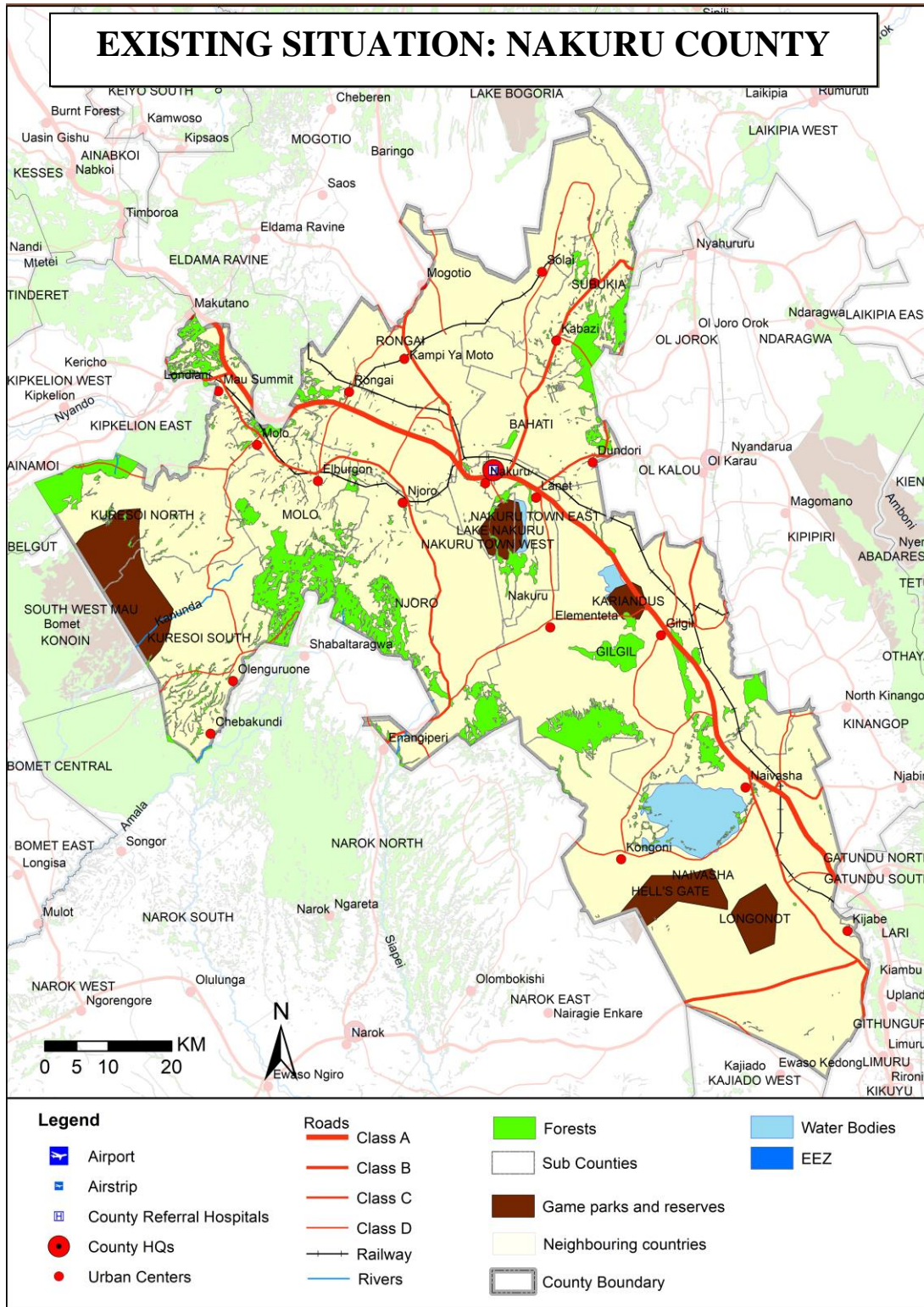
3.4.4 Public Utilities

To achieve a spatial and balanced regional development and meet demands of a growing population, there is need to develop and enhance economic infrastructure such as water services, waste management, energy and ICT to provide the foundation for economic development.

Map 2 below shows the exiting situation in Nakuru County.



Map 2: Existing Situation in Nakuru County



Source: State Department for Physical Planning, 2022

3.5 Nakuru County's Comparative Advantage

a) Transportation Corridor

The Great North Road A 104 a major transportation corridor in the country traverses the County. The County is soon going to have an SGR terminus in Naivasha Sub County.

b) Land and Natural resources

Nakuru County is endowed with an area of 7, 495.1 Km² of land. This includes 5,039.40 Km² of arable land, 852.1 Km² of non-arable land, 202 Km² of water mass (that basically covers lakes Naivasha, Elementaita and Nakuru) as well as 679.6Km² of gazetted forest.

c) Agricultural potential

The land area under food crops and cash crops in Nakuru County is 243,711.06(Ha) and 71,416.35(Ha) respectively. The main cash crops produced in the County are; Wheat 112400MT, Coffee 15900 MT, Tea 11495 MT, and Pyrethrum 260 MT. However, there is potential for pyrethrum production and the County has started the Pyrethrum revival programme. Large scale irrigation is majorly done by horticultural farmers especially flower farmers. However, the potential for irrigation activities remains under exploited.

d) Tourism and filming potential

Nakuru County has three national parks namely Lake Nakuru National Park, Hells Gate National Park and Mt. Longonot National Park. Other tourist sites include; Menengai Crater, Subukia Shrine, Lord Egerton Castle, Lake Naivasha, Lake Elementaita, Hyrax hill prehistoric site, Ol-doinyo Eburru volcano and Mau forest. These and numerous other private wildlife conservancies have huge tourist attraction potential.

e) Industry

The County has considerable industrial manufacturing potential. The sector is set to receive a major boost with implementation of the proposed industrial park at Naivasha town.

f) **Renewable energy potential**

Nakuru County is endowed with a huge capacity geothermal power production. Kenya is now the world's eighth largest producer of geothermal power worldwide and all the production sites are this County. There is huge potential for investment in this sector.

g) **Mineral Resources**

The County mineral resources include; kaolin, diatomite, sand and building stones, trona (soda ash), natural carbon dioxide.

DRAFT

DRAFT

4 DEVELOPMENT STRATEGIES AND POLICY GUIDELINES FOR NAKURU COUNTY

4.1 County Specific Issues and Development Strategies

The National Spatial Plan provides strategies for spatial growth and development across the country. The strategies are aimed at providing a spatial expression to Kenya Vision 2030 and other sector policies.

This section seeks to provide strategies for spatial growth and development of the county by addressing the factors that prevent the County from achieving the intended goals and objectives. The development strategies discussed are aimed at managing the global impacts, optimizing use of natural resources, creating a County balance and transforming rural areas. Specifically, the development strategies have been proposed to address the following aspects of the County's development agenda;

- Enhancing National Competitiveness
- Optimizing Land and Natural Resources
- Balanced Intra-County Development
- Promoting Rural Development
- Urbanization

Nakuru County is classified under high potential agriculture production zone. The following are detailed NSP sector-specific issues and strategies that apply to the County:

Table 3: County Sector specific issues and strategies

Strategy 1: Enhancing National Competitiveness		
Opportunities	Constraints	Strategies
<ul style="list-style-type: none"> • Strategic location of the County which cuts across the agro-climatic zones II and IV and presence of the A104 and B3 roads, • Presence of the Meter Gauge Railway, SGR and Internal Container Depot • Favorable agro-climatic zone that supports a variety of agricultural production • Elevation of Nakuru town into a city 	<ul style="list-style-type: none"> • Poor state and lack of connectivity of the roads • Inadequate linkages with neighboring Counties • Inadequate appropriate agricultural support infrastructures • Use of inappropriate farm inputs and technology • Lack of a spatial framework to manage land uses • Under- utilization of the Meter gauge railway 	<ul style="list-style-type: none"> • Plan and provide appropriate hierarchy of roads to increase internal and external linkages within the County • Leverage of the potential areas of collaboration with bloc members. • Provide adequate and appropriate infrastructure • Adopt modern methods and practices as well as technology in the whole range of agricultural capabilities in that County • Prepare and implement Nakuru city urban development plan
Strategy 2: Optimizing Land and Natural Resources		
Agriculture		
Opportunities	Constraints	Strategies
<ul style="list-style-type: none"> • Favorable climatic conditions, presence of rivers and fertile soils hence high 	<ul style="list-style-type: none"> • Fragmentation of land into uneconomical parcels due to 	<ul style="list-style-type: none"> • Strictly controlling the expansion of urban areas into agriculture land

agricultural and irrigation potential	population pressure <ul style="list-style-type: none"> • Poor agricultural support infrastructure • Inadequate adaptation of modern methods and technology like rain harvesting 	<ul style="list-style-type: none"> • Stop further fragmentation of agricultural land • Agricultural support infrastructure should be provided to match the function expansion of irrigated agriculture to tap the full potential
Environment (Conservation Area & Protection Area)		
Opportunity	Constraint	Strategy
<p>Presence of conservation areas (highlands)</p> <p>Presence of protection Areas</p> <p>Rank 1</p> <ul style="list-style-type: none"> • Water towers, Wetlands • Natural forest <p>Rank 2</p> <ul style="list-style-type: none"> • Water bodies (rivers), • Mountains, parks and conservancies. 	<ul style="list-style-type: none"> • Soil erosion • Loss of vegetation • Deforestation • Pollution • Drying up of water sources • Encroachment by human settlement and activities • Unsustainable abstraction of water 	<ul style="list-style-type: none"> • Increase forest cover through afforestation, re-afforestation and agro forestry • Development is not permitted in these areas except for the purpose of eco-tourism and research. • Control water abstraction • Preservation and conservation of marine biodiversity • Mountain areas -Human settlement is not allowed beyond certain altitudes; Tourism related activities are allowed. • Parks and conservancies -Controlled development of hotels is permitted; • No change of use is permitted except for conservation purpose
Natural Resource		

Opportunity	Constraint	Strategy
<ul style="list-style-type: none"> • Vast land resource • Huge potential for green energy (geothermal) generation • Water: Permanent rivers including Njoro and Makalia which drain into Lake Nakuru, Malewa which drains into Lake Naivasha and Molo River which drains into Lake Baringo among others as well as presence of underground water • Existence of minerals (kaolin, diatomite, sand and building stones, trona (soda ash), natural carbon dioxide) 	<ul style="list-style-type: none"> • Insecurity of tenure • Subdivision of agricultural land in peri-urban areas • Unplanned expansion of urban centres • High costs of initial capital investment • Over abstraction of water • Infestation of water hyacinths in Lake Naivasha • Ineffective enforcement of a regulatory frameworks in exploitation of underground water • Largely unregulated trade • Environmental degradation • Lack of appropriate technology for sustainable exploitation 	<ul style="list-style-type: none"> • Operationalizing of titling programs to ensure security of tenure • Urban growth limit to be established • Preparation and implementation of local development plans • Optimal utilization of the available natural resource potential • Invest in appropriate technology and infrastructure • Undertake further exploration of the available natural • Optimize rain water harvesting particularly storm water • Optimize the use of underground water for irrigation in dry areas. • Invest in appropriate technology and infrastructure • Adopt sustainable exploitation of the available natural resource potential • Appropriate technology and exploration infrastructure • Diversify energy products sources to reduce costs of production and enhance its reliability • Strict regulation of mineral extraction

		activities and trade
Industrial		
Opportunity	Constraint	Strategy
<ul style="list-style-type: none"> Existing manufacturing entities include; animal feeds production companies, agricultural inputs e.g., Syngenta, engineering works, manufacturing industries e.g., Keroche, Menengai Oil Refineries, canners, dairy products, bakery and hotel industry spread across the county. 	<ul style="list-style-type: none"> Poor linkage to markets Inadequate transport infrastructure Price fluctuations Lack of established value chains Insufficient market for finished products Lack of frameworks to safeguard Intellectual Property Rights (IPR) 	<ul style="list-style-type: none"> Provide adequate, supportive transport and infrastructure Diversify energy production sources to reduce costs of production and enhance its reliability Promote assertive marketing campaigns for products both domestically and internationally Provide appropriate technology to enhance value addition. Promote the formation of cooperatives and Saccos to advance marketing
Tourism		
Opportunity	Constraint	Strategy
<ul style="list-style-type: none"> Lake Nakuru National Park, Hells Gate National Park and Mt. Longonot National Park. Other tourist sites include; Menengai Crater, Subukia Shrine, Lord Egerton Castle, Lake Naivasha, Lake Elementaita, Hyrax hill prehistoric site, Ol-doinyo Eburru 	<ul style="list-style-type: none"> Underdeveloped tourism sites and products Underexploited tourism potentials Poor marketing strategies to promote tourism Continued over reliance on a narrow tourism product range 	<ul style="list-style-type: none"> Promote domestic tourism by providing incentives and subsidies Strict enforcement of the existing regulations for safeguarding protection areas. Enhance tourism marketing strategies Open up under-utilized sites

<p>volcano and Mau Forest.</p>	<ul style="list-style-type: none"> • Poaching and human wildlife conflicts • Encroachment of human activities into protected areas 	<ul style="list-style-type: none"> • Enhance security in tourism potential areas • Provide appropriate tourism support infrastructure and facilities • Improve transportation infrastructure.
<p>Transport</p>		
<ul style="list-style-type: none"> • The County is traversed by Road A 104 (Nairobi-Nakuru) as the main road, SGR, the Meter Gauge Railway (MTR) and the presence of Lanet Military Base • Fairly well developed transport inter and intra county road network 	<ul style="list-style-type: none"> • Most roads are in poor condition; • Poor coordination of activities by various agencies in charge of the sector • Lack of NMT infrastructure • Uncontrolled motorcycle proliferation in both rural and urban areas • Encroachment and/ or grabbing of road reserves • Inadequate or lack of terminal facilities • Poor quality of transport services • Inappropriate modal split • Un optimal utilization of the Meter Guage Railway • Transport system not fully integrated • Lack of civilian airstrip • Insufficient and ineffective linkages between airstrip and other transport modes; 	<ul style="list-style-type: none"> • Integrate transport corridor planning • Repossess and revert all illegally acquired land for roads infrastructure • Preserve and secure adequate land for future transport and other related infrastructural development; • Promote the purchase and use of high occupancy public transport vehicles • Create linkages to agricultural, tourist and urban areas; • Enforce a regulatory standard requirement for all public transport service operators; • Promote the use of the Meter Guage Railway • Encourage private sector participation; • Upgrading of all the roads • Develop a County airport • Improve and expand existing airstrip • Integration of all modes of transport

Public Utilities		
Water and Sanitation		
<ul style="list-style-type: none"> • Availability of water sources (rivers, springs, boreholes, wells, dams) • Existing sewerage system in Nakuru city, Naivasha, Molo and Gilgil towns 	<ul style="list-style-type: none"> • Encroachment of human activities into catchment areas • Population increase resulting to high demand surpassing its supply • Contamination of the available water (water pollution) • Inadequate sewerage coverage and treatment facilities. • Inappropriate water reticulation system 	<ul style="list-style-type: none"> • Invest in water harvesting technologies and storage facilities in areas classified as water stressed areas • Protection and rehabilitation of waters sources and catchments areas such as aquifers, dams, and water recharge areas • Develop appropriate water reticulation network • Establishment and upgrading of appropriate sanitation infrastructure • Regulation on discharge of wastes • Plan and implement sewerage systems in major urban centers
Solid waste management		
<ul style="list-style-type: none"> • Existing dumpsites and other solid waste management facilities 	<ul style="list-style-type: none"> • High rate of urbanization • Inadequate and poorly managed solid waste management facilities 	<ul style="list-style-type: none"> • Construction and upgrading of solid waste management facilities • Promote Reduce, Reuse, Recycle (3Rs)
ICT		
<ul style="list-style-type: none"> • Existing National Fiber Optic network (NOFBI) 	<ul style="list-style-type: none"> • Low coverage/skewed distribution of the fiber network 	<ul style="list-style-type: none"> • Building ICT relevant infrastructure • Mainstream ICT in all sectors to

	<ul style="list-style-type: none"> • High cost of ICT equipment 	<p>promote service</p> <ul style="list-style-type: none"> • Increase efficiency and productivity of the existing platforms such as Huduma center • Expand the fiber optic network to all urban centers
Strategy 3: Balanced Intra-County Development		
<ul style="list-style-type: none"> • Resource endowment • Enabling policy framework 	<ul style="list-style-type: none"> • Inadequate infrastructural facilities and services • Under-exploitation of resources • Weak linkages between rural and urban areas. 	<ul style="list-style-type: none"> • Establish strong rural urban linkages • Encourage equitable exploitation and sound management of mineral resources • Promote investment in sustainable tourism including eco-tourism • Promote irrigation activities for improved productivity in quantity and quality of yield within the potential regions. • Promote industrialization and value addition through the provision of support infrastructure in the less developed regions as well as strengthening the better developed regions.
Strategy 4: Promoting Rural Development		
<ul style="list-style-type: none"> • Resource endowment in rural areas 	<ul style="list-style-type: none"> • Inadequate infrastructural facilities and 	<ul style="list-style-type: none"> • Establish strong rural urban linkages

<p>(agriculture, large-scale livestock production and tourism)</p> <ul style="list-style-type: none"> • Enabling policy framework • Human resource (both skilled and unskilled) • Existing physical and social infrastructure (roads, schools, health centres, administrative units) • Devolution 	<p>services</p> <ul style="list-style-type: none"> • Under-exploitation of resources • Weak linkages between rural and urban areas. • Fragmentation of land into uneconomical parcels due to population pressure 	<ul style="list-style-type: none"> • Encourage equitable exploitation and sound management of mineral resources • Promote investment in sustainable tourism including eco-tourism • Promote irrigation activities for improved productivity in quantity and quality of yield within the potential regions. • Promote industrialization and value addition through the provision of support infrastructure in the less developed regions as well as strengthening the better developed regions. • Modernize agriculture to promote high yield production
<p>Strategy 5: Urbanization</p>		
<ul style="list-style-type: none"> • Human resource (both skilled and unskilled) • Enabling policy framework • Existing infrastructure • Devolution of governance • Establishment of equalization of funds • Elevation of Nakuru tow to a city 	<ul style="list-style-type: none"> • Weak rural-urban linkages • Rapid urbanization rates • Weak and uncoordinated development control and enforcement systems. • Poor enforcement of existing legislation on housing development and land use • Poor implementation of development 	<ul style="list-style-type: none"> • Strengthen the urban rural linkages to reduce the rate of urbanization • Provide services and infrastructure closer to the rural areas • Enforce, harmonize and regularly review the existing legislative and regulatory instruments • Plan and provide appropriate and

	<p>plans and planning policies</p> <ul style="list-style-type: none"> • Lack of appropriate transport infrastructure and utilities • Deteriorating infrastructure • Poor waste management • Land and governance issues. • Proliferation of informal settlements • Land and governance issues • Urban sprawl 	<p>adequate transport infrastructure and utilities</p> <ul style="list-style-type: none"> • Promote the development of centres as per its potential and population • Promote sustainable waste management • Strengthen existing land management institutions • Plan, implement and enforce urban plans for the existing centres to control urban sprawl and promote urban containment.
--	--	--

DRAFT

4.2 National Spatial Plan Policy Guidelines and Measures for Nakuru County

This section seeks to provide the spatial policy guidelines and measures aimed at promoting the achievements of the objectives of the National Spatial Plan using its guidelines. They aim at enhancing global and national competitiveness and economic efficiency, optimizing the use of land and natural resources, promoting regional balanced development and conservation of the environment.

These policies are supported by a wide range of measures which spell out the specific actions to be undertaken to actualize the policy intentions. The policies shall ensure that the County is nationally competitive as an investment destination, especially in emerging sectors such as the ICT. The policies will also be implemented by the County government's agencies responsible for planning and development control as well as the authorities responsible for land administration.

The following are policies and measures specific to Nakuru County.

Table 4: NSP Policy Guidelines and Measures for the County

S/No.	Sector	Policy Guidelines	Measures
1.	Resource Potential Growth regions	Nakuru to be developed based on its agriculture and Tourism potential	<ul style="list-style-type: none"> • Infrastructure provision to support value addition initiatives and human settlement • Small and medium urban centres development • Conservation of the environment and natural resources • Rural development through provision of infrastructure, agricultural sector development and related economic activities • Development and rehabilitation of key infrastructure in underserved locations
2.	Enhancing County Competitiveness	<ul style="list-style-type: none"> • The selective concentration concept shall be adopted for the planning and location of urban based economic activities in the county to leverage on National competitiveness • The major urban areas shall be planned and provided with appropriate infrastructure to enhance efficiency and quality of life • Land and natural resources of the less developed areas shall be utilized optimally and sustainably • The efficiency of the transportation 	<ul style="list-style-type: none"> • Concentrate urban based economic activities in selected urban areas • Prioritize preparation and implementation of Spatial Development Plans in Nakuru city, Naivasha, Gilgil and Molo towns • Enhance the Livability Index for urban areas by providing quality social and physical infrastructure • Advance Technological Readiness through the provision of technological centers linked to different levels all over the country e.g., Science parks, Research laboratories etc. • Modernize agriculture

		<p>network shall be enhanced to take advantage of the strategic location and position of the County</p> <ul style="list-style-type: none"> • Enhanced cooperation in spatial and economic planning with neighboring Counties and regional blocs such as the Central Region Economic Bloc. 	<ul style="list-style-type: none"> • Value addition and improved marketing channels • Explore and sustainably exploit natural resources
3.	<p>Modernizing Agriculture</p> <p>(Agro-climatic zone I-III)</p>	<ul style="list-style-type: none"> • The agricultural use of land in high potential areas shall be intensified to increase productivity. 	<ul style="list-style-type: none"> • Prepare and implement County spatial plan to protect agricultural land • Prepare urban spatial development plans for all urban areas in the County to urban growth limits. • Prohibit/control change of use and subdivision for designated agricultural land. • Adopt modern agricultural methods • Provide transport connectivity and adequate inter and intra-road networks as well as other social and physical infrastructure • Value addition to agricultural and livestock products.

4.	Conserving the Natural Environment	<ul style="list-style-type: none"> • All environmentally sensitive areas shall be protected and utilized in a sustainable manner • The County shall integrate environmental concerns in policy formulation, resource planning and development processes. 	<ul style="list-style-type: none"> • Prepare and implement integrated management plans for environmental sensitive areas • Support effective implementation of related policies and laws. • Involve and empower communities in the management of environmentally sensitive areas and promote environmental education and awareness • Strengthen Environmental Governance and harmonize sectoral policies, legislation and regulations.
5.	Rapidly Industrializing County	<ul style="list-style-type: none"> • The cluster development strategy shall be promoted to focus on proximity to raw materials and markets of region-specific products • Specific sites for industrial development shall be identified, planned and serviced with the appropriate infrastructure • Adequate and affordable energy supply for the industrial sector shall be provided 	<ul style="list-style-type: none"> • Prepare and implement industrial master plans • Promote value addition in processing of local produce. • Provide appropriate infrastructure to support for industrial activities (transportation, energy, water) • Integrate the industrialization process and environment conservation • Promote the adoption of energy efficient technologies
6.	Diversifying Tourism (Central highlands and Great Rift Valley Circuit)	<ul style="list-style-type: none"> • The County shall promote diversification of tourism by promoting the diverse products available in the county 	<ul style="list-style-type: none"> • Provide and improve infrastructure that supports tourism • Prepare a County tourism development

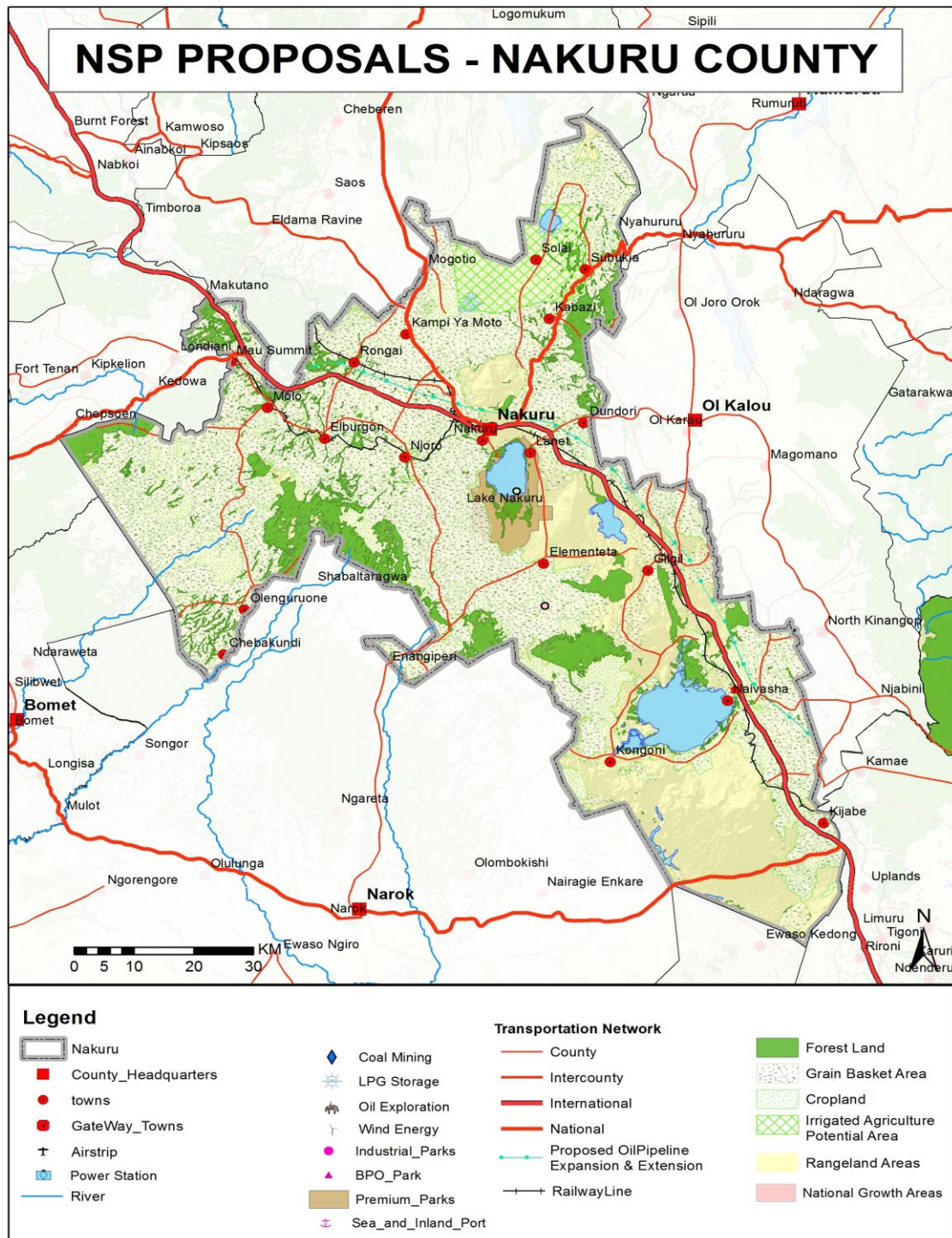
		<ul style="list-style-type: none"> • Appropriate tourism support infrastructure and facilities shall be provided • Tourist attraction areas and sites shall be conserved and protected • Governance of the tourism sector shall be enhanced • Spatial Development plans shall be prepared to guide implementation of the flagship projects for the tourism sector. 	<p>master plan which should focus on tourism sites zoning, product development and quality standard of tourism services.</p> <ul style="list-style-type: none"> • Strictly regulate developments within the tourist attraction sites. • Undertake research to identify more tourist attraction areas and sites, inventorize Agro tourism sites • Prepare plan for a natural heritage site in Lake Elmentaita.
7.	Managing Human Settlements	<ul style="list-style-type: none"> • Existing urban areas shall be subjected to strict development control to curtail encroachment on high potential agricultural land • Rural growth centres shall be rationalized and supported to act as central places and settlements clustered to free the rich agricultural land • Human settlements shall be developed in line with environmental and natural resources conservation to improve living conditions • The NSP advocates for the provision of an efficient, reliable and effective transport system for human settlements • The management and governance of 	<ul style="list-style-type: none"> • Prepare and implement local physical development plans for the city of Nakuru and other urban areas • Enforce strict regulations and justifications on development control processes. • Provide and integrate requisite infrastructure to support growth and development. • Promote sectors such as agriculture that have potential to stimulate rural development • Incorporate disaster management and mitigation in planning of rural settlements. • Plan and provide an integrated waste management system. • Build institutional capacities of the urban areas management boards

		<p>Human</p> <ul style="list-style-type: none"> • Settlements particularly the urban areas shall be improved. • NSP shall advocate for upgrading of the existing • Settlements and forestalling of new informal settlements • Peri-urban development shall be managed and controlled to contain urban growth within its limits and protect rural land uses. 	<ul style="list-style-type: none"> • Encourage non-motorized transport (NMT) and streamlining of public mass transport in urban areas
8.	Integrating the Transportation network	<ul style="list-style-type: none"> • An integrated and functional transport system for the county urban areas shall be developed. • An efficient and affordable Mass Public Transport for all urban areas in the county shall be developed • An urban transport policy that facilitates an integrated, balanced and environmentally sound urban transport system in which all modes efficiently play their roles shall be developed 	<ul style="list-style-type: none"> • Provide access, expand and linkage, between County headquarters and sub county headquarters and for local access and link them to National transportation corridors. • Integrate land use with urban transport planning for all urban areas. • Develop a public transport policy to regulate planning and management of public transport • Incorporate an integrated transport network in County, city and urban development plans
9.	Providing Appropriate Infrastructure	<ul style="list-style-type: none"> • Safe, adequate, reliable and affordable electricity for both • Urban and rural settlements shall be 	<ul style="list-style-type: none"> • Increase access to electricity through upgrading and expansion of the national power transmission and distribution network.

		<p>provided.</p> <ul style="list-style-type: none"> • Expansion and improvement of water reticulation systems to facilitate the access to clean, safe, adequate, reliable and affordable water in human settlements shall be promoted • A network of functional, efficient, safe, accessible and sustainable county health referral infrastructure shall be established. • Appropriate, quality, efficient and cost-effective ICT infrastructure in both rural and urban areas shall be promoted • The expansion of sewerage systems and waste management facilities shall be promoted to improve sanitation in human settlements • Sporting infrastructure shall be planned, developed, maintained and the existing rehabilitated to promote sports development. 	<ul style="list-style-type: none"> • Mainstream and enforce green energy options in the design of buildings • Restore all the water towers. • Develop the service provider’s capacity to offer services and appropriately refer at each level of the healthcare system; • Develop and upgrade ICT Infrastructure across the County. • Mainstream use of ICT in all levels of government and the private sector (e-government). • Establish County Sports Talent Centers to act as feeds to the international center to scout, nurture and develop sports talents at the sub-national levels.
--	--	--	--

Map 3 provides a spatial representation of the policies proposed for Nakuru Count

Map 3: NSP Proposals for Nakuru County



Source: State Department for Physical Planning, 2022

5 IMPLEMENTATION AND ADOPTION OF THE GUIDELINES

5.1 Overview

The implementation framework identifies activities and further ties them with responsible actors, resources and timeframes adequate for their execution. It constitutes a deliberately established method, means or system of ensuring that the policies, strategies and measures outlined in the guidelines are continuously and consistently executed to achieve their objectives.

To effectively implement the guidelines, the various sectors, actors and levels of planning have been identified and have to work together and the mandate of the sectors at the National and County levels of planning have to be integrated.

5.2 Implementation Approaches

The County Specific Guidelines will be implemented through various approaches including:

1. Preparation of spatial plans to integrate and conform to the proposals of the County Guidelines. The plans include:
 - Inter-County Physical and Land Use Development Plans for Metropolitan regions, conservation zones, river basins, water towers, coastal ecosystems, trans-boundary resource areas and transport corridors, among others.
 - County Physical and Land Use Development Plans.
 - Local Physical and Land Use Development plans for Cities, Urban areas, special area plans, subject plans and detailed neighbourhood plans, among others.
 - Sectoral plans
2. Integration of the guideline policies, strategies and measures into the County sector plans, programs and projects. Ministries, Departments and Agencies (MDAs), County and National Departments identified in the plan to administer the policies, strategies and measures are required to translate them into action

plans, programmes and projects and to include them in their subsequent sector plans.

3. Formulation of policies, regulations and standards to guide development control

5.3 Implementation Framework

The implementation of the various policies, strategies, measures, programmes and projects under these Guidelines will involve a wide range of actors. It will require a coordinated approach and partnership between the National and County Governments and non-state actors. It may require re-engineering of institutions and a number of actors to undertake the implementation through a harmonized approach.

The National Spatial Plan identified a multi-levelled framework for implementation of the plan that incorporates all levels of actors. In this regard, the institutions identified in the NSP to undertake implementation of the plan at County-level shall also be mandated to ensure implementation of this Guidelines.

The following are the Institutions mandated to ensure implementation of the County Specific guidelines;

5.3.1 County Physical Planning Committee

The role of the County Planning Committee shall be to ensure aspirations of the guidelines are articulated in preparation of the County Spatial Plans, County Integrated Development Plans and Local Physical and Land Use Development Plans.

The composition of this committee consists of;

- i. The Governor who will be the Chairperson,
- ii. the Deputy Governor,
- iii. the County Executive Committee Members from various sectors
- iv. Directors from various relevant County Departments including Lands and Physical Planning, Economic planning, Agriculture, Industrialization, Tourism, Environment, Transport and Infrastructure

The functions of the committee include;

- 1) To promote effective integration between physical, economic and sectoral planning within the framework of county development policies.
- 2) To provide policy guidance for the implementation of strategic spatial projects
- 3) To ensure that the guidelines policies and measures are mainstreamed in the various county plans.
- 4) To mobilize resource for implementation of the Guidelines.

5.3.2 County Planning Unit (CPU)

The technical Unit shall provide technical support to the various implementing County departments on issues relating to physical planning.

The CPU shall;

- i. Monitor the Implementation of the guidelines.
- ii. To disseminate components of the guidelines to the various county departments.
- iii. Update the County Physical Planning Committee on a regular basis on the implementation of the guidelines.

The County Director of Physical Planning shall be responsible for preparation of an annual state of planning report which shall among other things appraise the status of implementation of the guidelines.

5.3.3 National Land Commission

The National Land Commission shall play its oversight role in land use planning to ensure efficient implementation of the NSP and the guidelines. Other functions of the Commission in the implementation of the NSP and the guidelines include the following: - To formulate mechanisms and parameters for monitoring and overseeing land use planning.

- i. To ensure that relevant planning authorities carry out their functions as required by law.
- ii. To make recommendations for improvements of the planning systems in the county.
- iii. To mobilize resources to support physical/land use planning.

5.3.4 Monitoring and Evaluation

Implementation of the guidelines will be monitored and evaluated to measure both outputs and outcomes and ensure that the intended actions are implemented in a timely manner. To facilitate attainment of the objectives of the guidelines, performance indicators will be developed by the County Physical Planning Department for efficient monitoring. Periodic reports will be prepared in relation to progress being made in their implementation.

The graphic below illustrates the implementation structure for County Specific guidelines.

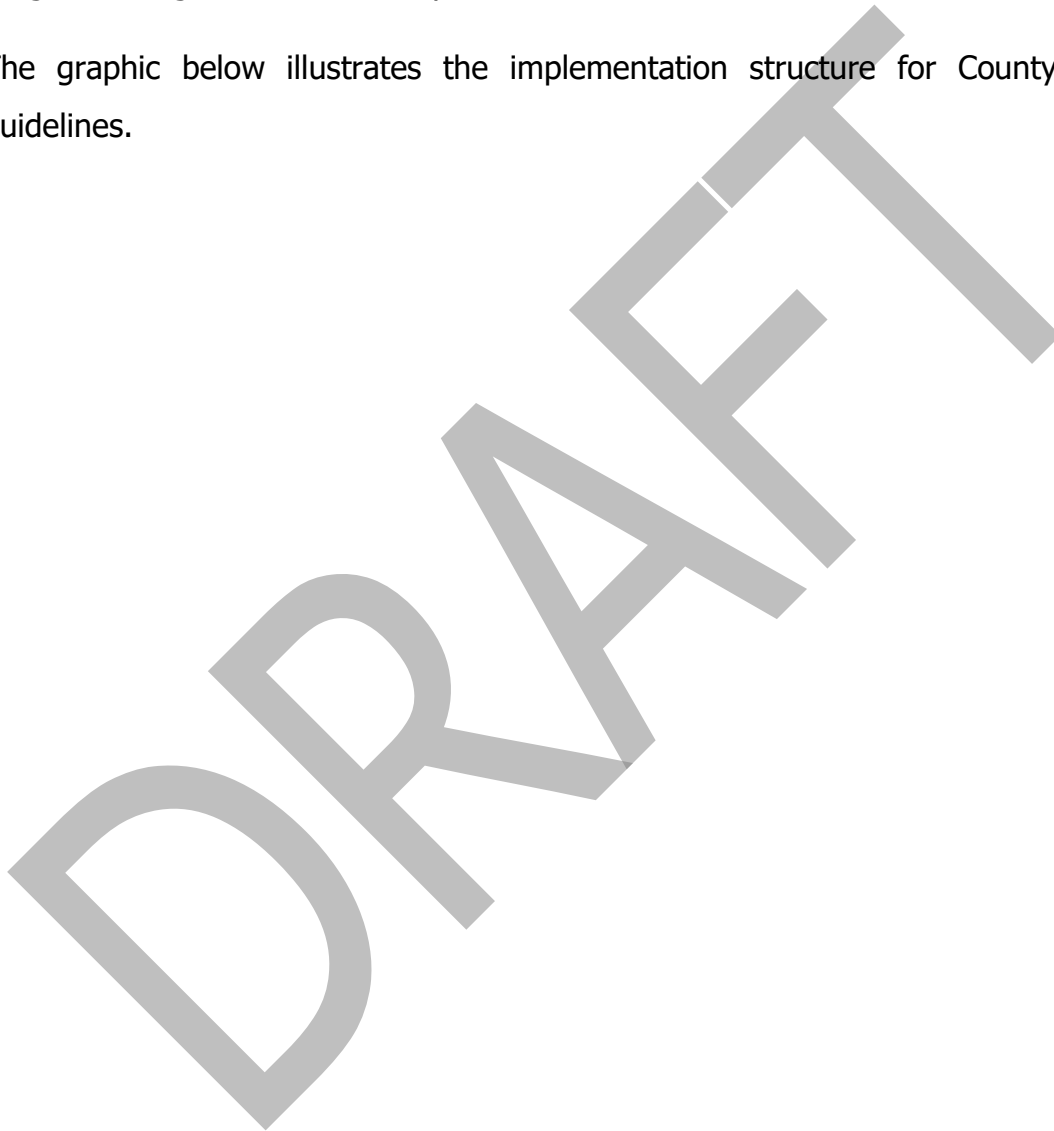
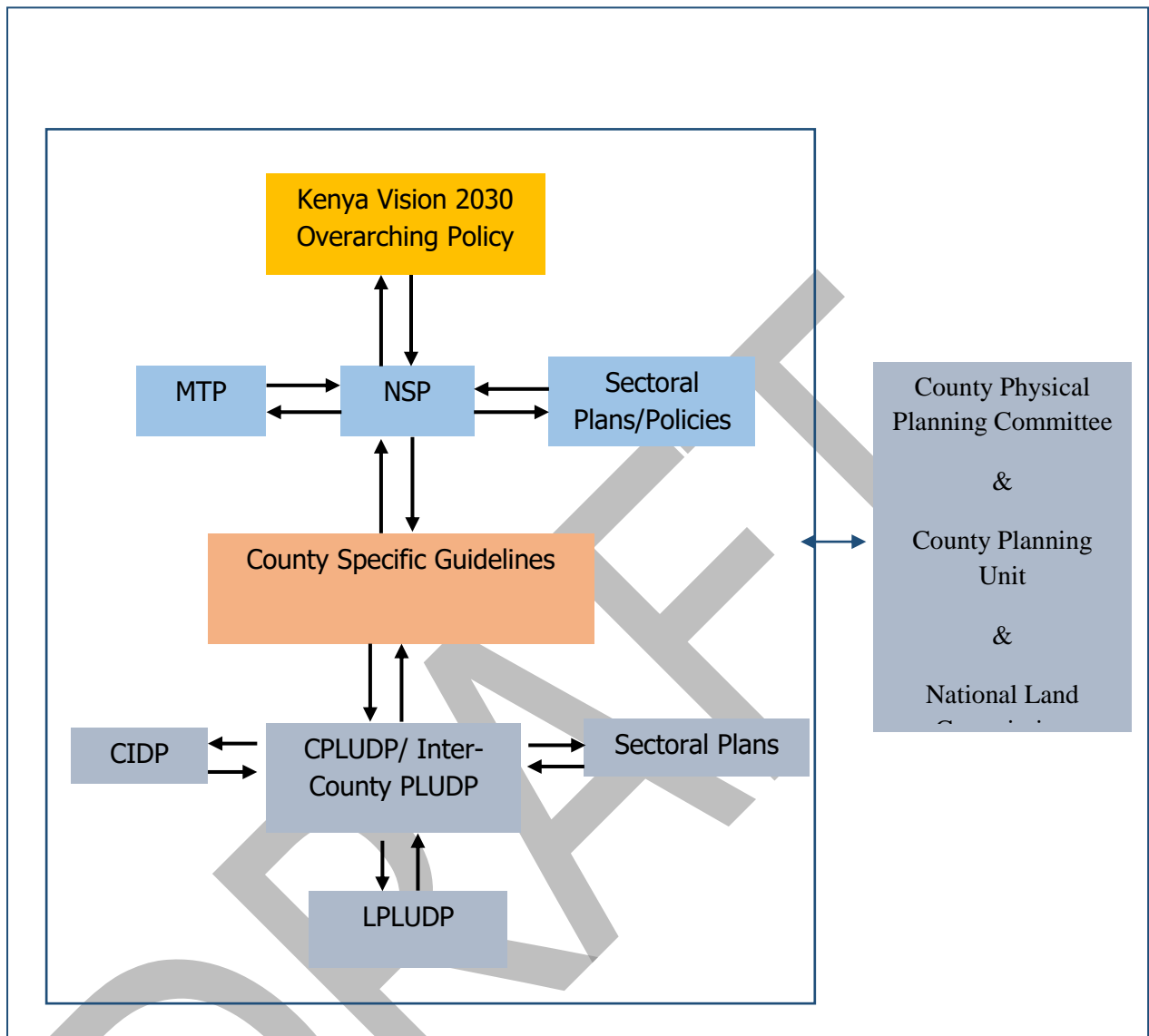


Figure 4: Implementation structure of the guidelines



Source: State Department for Physical Planning, 2022

5.4 Conclusion

The application of these guidelines will be undertaken by a number of actors and hence the need for a coordinated approach. The lead agency will be Nakuru County Government which will be responsible for implementing various county specific initiatives proposed by the guidelines.

The National Government, County Government of Nakuru, the private sector and the general public will be critical in actualizing the objectives of these guidelines. The County Physical Planning Committee shall develop a communication strategy to enhance the synergies.

The National Department of Physical Planning shall undertake sensitization, training and capacity building of the County Government and National Government institutions and agencies that will be involved in the implementation of these guidelines. Special attention will be given to the County physical planning units, as they will be expected to provide technical expertise in the implementation of the County specific policies and strategies.