



NATIONAL SPATIAL PLAN GUIDELINES FOR NANDI COUNTY



MINISTRY OF LANDS AND PHYSICAL PLANNING

© JUNE 2022

Foreword

The Constitution of Kenya apportions responsibility of planning to both National and County Governments. Under the Fourth Schedule on distribution of functions, Part 1 (21) and (32) mandates the National Government with the responsibility of formulating general principles of land planning, co-ordination of planning by the Counties, capacity building and technical assistance to the Counties. On the other hand, Part 2(8) allocates the function of County planning and development to County Governments. It is under these provisions that the County specific guidelines have been prepared.

The Department of Physical Planning prepared the National Spatial Plan (NSP) in response to the Kenya Vision 2030 to guide the spatial development of the country over a period of 30 years beginning in 2015.

It aims at achieving an organized, integrated, sustainable and balanced development of the country by providing a framework for better national organization and linkages between different activities within the national space.

To implement the Plan, the Counties are expected to play a key role by mainstreaming strategies, policies, and measures identified in the NSP into the County spatial planning systems.

The guidelines have identified planning policies, strategies, and measures that Plans at the County level are expected to mainstream and propagate. The policies address among others, the protection of rich agricultural land, development imbalances, conservation of environmentally sensitive areas, urban containment, and promotion of industrial development.

The guidelines provide direction on the existing potentials, the opportunities, the constraints/challenges inhibiting harnessing of the potentials, the strategies to apply, respective policies required, and the necessary measures to achieve optimal productivity, sustainability, efficiency and equity in the use of county land resources.

The guidelines are an opportunity on how best to refocus, vary and complement areas that require different approaches responding to country-specific needs and promote the livelihoods of their people, while contributing to the national aspirations of vision 2030,

regional objectives of the Africa Agenda 2063, and international targets of sustainable development. The refocusing will also be handy in reviewing and making decisions on NSP which is due for review in 2025.

These guidelines are therefore a tool for enhancing this critical path and provide a direction for development planning by the Counties as they discharge their responsibility of preparing county and local physical and land use development plans. The guidelines will also ensure that the County Integrated Development Plans conform to the proposed County specific policy guidelines and measures.

DRAFT

PREFACE

The National Spatial Plan (NSP) recognizes that Kenya is greatly endowed with massive and diverse resources distributed over the national space that require an integrated and coordinated approach for optimal productivity and sustainability.

The County Specific Guidelines have been derived from the National Spatial Plan and provide a planning framework for the integration of the NSP into the county spatial planning system. They are clear statements linking the National Spatial Plan to Inter-County, County and lower-level Physical and Land Use Development Plans and provide clarification on the anticipated sustainable development outcomes of implementing the Plan.

The County Government will adopt, develop and implement their plans based on the policies, strategies, and measures articulated in the guidelines. The realized county plans are expected to guide, harmonize and facilitate development within the county, hence contributing to the overall implementation of the NSP.

The guidelines also form an efficient compass and monitoring tool for National and County Governments to jointly pursue sustainable planning and appropriate implementation mechanisms.

For the county to be nationally competitive, there is need to balance development and promote optimal utilization of land and land-based resources as well as cultivate an integrated approach in addressing the intertwined challenges of regional imbalances/inequalities, rural development, underutilization of the available resources, uncontrolled urbanization, environmental degradation and inefficient transportation. It is imperative therefore, to prioritize the implementation of this strategic document so as to promote balanced development and competitiveness across the county

EXECUTIVE SUMMARY

The County Specific Guidelines seek to facilitate the implementation of the National Spatial Plan by outlining policies, strategies and measures to guide County spatial planning and development and promote optimal productivity, sustainability, efficiency and equity in the use of land. They provide a framework for preparation of lower level Plans including Inter-County, County and Local Physical and Land Use Development Plans.

The disconnect between National and County Spatial Planning and development has resulted in uncoordinated and unbalanced development, therefore creating a need for a clear structure that links National, Regional and Local planning and development. This is achievable through integration of the policies, strategies and measures proposed by the guidelines into County Spatial Plans, Programs and Projects, to tackle challenges of unbalanced regional development, urbanization, national competitiveness and unsustainable use of land and natural resources.

The County Specific Guidelines are organized into five chapters detailing various facets. Chapter one provides an overview, purpose and justification of preparation of the guidelines. It also outlines the objectives that the guidelines intend to achieve and details the preparation process as well as intended users. This chapter highlights the key principles that form the basis for preparation of lower level plans including public participation, liveability, sustainable development, urban containment, smart urban growth among others.

Chapter two details the legal and policy provisions that the guidelines are anchored upon. They include, among others, The Constitution of Kenya, 2010, The Physical and Land Use Planning Act No.13 of 2019, County Government Act, 2012, Environmental Management and Coordination (Amendment) Act, 2015, Sessional Paper No. 01 of 2017 on National Land Use Policy and Sessional Paper No. 10 of 2012 on Kenya Vision 2030. The third chapter analyses the county profile, detailing its location, size, bio-physical characteristics, socioeconomic status and the County's comparative advantage in relation to others. The locational context provides information on the geographical

position and bordering Counties while the biophysical context discusses the topography, hydrology and climate. The socioeconomic status indicates key economic drivers of the County and its population and demographic structure.

Chapter four presents the County specific issues and proposes development strategies to promote national competitiveness, optimal use of land and resources, rural development, balanced intra-county development and urbanization. Additionally, it provides policy guidelines and measures for County advancement.

The final chapter five focuses on implementation and adoption of the guidelines. The implementation framework identifies institutions, County development programs and projects, and further ties them with responsible actors, resources and timeframes for effective execution. It proposes a framework for ensuring that the outlined policies, strategies and measures are adequately implemented.

DRAFT

Contents

Foreword	2
PREFACE.....	4
EXECUTIVE SUMMARY.....	5
List of Maps.....	9
List of Tables	9
List of Figures	9
CHAPTER ONE INTRODUCTION	10
1.1 Background.....	10
1.2 Purpose	10
1.3 Objectives.....	11
1.4 Scope.....	11
1.5 Justification	12
1.6 Application of the guidelines.....	12
1.7 Process Of Preparing the Guidelines	13
1.8 Targeted Users.....	13
1.9 Key Principles.....	15
CHAPTER TWO: THE POLICY, LEGAL AND PLANNING FRAMEWORK FOR THE GUIDELINES	17
2.1 Constitutional context.....	17
2.2 Policy Context.....	17
2.2.2 Sessional Paper No. 1 of 2017- National Land Use Policy	17
2.3 Legal context	18
2.3.1 The Physical and Land Use Planning Act, 2019	18
2.3.2 County Governments Act, 2012.....	18
2.3.3 The Urban Areas and Cities (Amendment) Act, 2019	18
2.3.4 Environmental Management and Coordination (Amendment) Act, 2015	18
2.3.5 National Land Commission Act, 2012	18
2.4 Planning Context.....	19
2.4.1 National Spatial Plan (NSP).....	19
2.4.2 NSP linkage to other plans.....	19
CHAPTER THREE: COUNTY PROFILE	22
3.0 Introduction.....	22
3.1 Location context	22
3.2.....	24

Bio - Physical Features	24
3.3 Socio-economic Characteristics	25
3.4 The County's Comparative Advantage.....	27
CHAPTER FOUR	29
4.1 County Specific Issues ,Development Strategies and Policy Guidelines	29
4.1.1 DEVELOPMENT STRATEGY: Enhancing National Competitiveness	30
4.1.2 DEVELOPMENT STRATEGY: Optimizing Use of Land and Natural Resources	30
4.1.3 DEVELOPMENT STRATEGY: Promoting Balanced Intra-County development	35
4.1.4 DEVELOPMENT STRATEGY: URBANIZATION	36
4.2 Spatial Policy Guidelines	38
THEME.....	39
4.2.1 Resource Potential Growth Region (Region 1: rain fed agricultural potential).....	39
4.2.2 Spatial Structure	39
4.2.3 Enhancing National Competitiveness.....	39
4.2.4 Modernizing Agriculture.....	41
4.2.5 Diversifying Tourism (Great Rift Valley Circuit)	42
4.2.6 Managing Human Settlements	43
4.2.7 Conserving the Natural Environment.....	46
4.2.8 Integrating the National Transportation Network.....	47
4.2.9 Providing Appropriate Infrastructure.....	48
4.2.10 Towards a Rapidly Industrializing County.....	50
CHAPTER FIVE: IMPLEMENTATION AND ADOPTION OF THE GUIDELINES	52
5.1 Overview	52
5.2 Implementation Approaches.....	52
5.3 Implementation Framework	53
5.3.1 County Physical Planning Committee	53
5.3.2 County Planning Unit (CPU).....	54
5.3.3 National Land Commission	54
5.4 Monitoring and Evaluation.....	54
Conclusion.....	57

List of Maps

MAP 1: LOCATION OF NANDI COUNTY	23
MAP 2: THE EXISTING SITUATION IN NANDI COUNTY	28
MAP 3: NSP PROPOSALS FOR NANDI COUNTY	51

List of Tables

TABLE 1: TARGETED USERS OF THE GUIDELINES	13
TABLE 2: POPULATION PROJECTION TO THE YEAR 2045.....	25
TABLE 3: COUNTY SPECIFIC ISSUES AND DEVELOPMENT STRATEGIES	30
TABLE 4: NSP POLICY GUIDELINES AND MEASURES FOR THE COUNTY.....	39

List of Figures

FIGURE 1: THE SCOPE OF THE GUIDELINES	11
FIGURE 2: POLICY FOCUS OF THE NSP	19
FIGURE 3: NSP LINKAGE TO OTHER PLANS	21
FIGURE 4: NSP IMPLEMENTATION ORGANIZATION STRUCTURE	56

CHAPTER ONE INTRODUCTION

1.1 Background

The County Guidelines set out policies, strategies and measures that will guide the long-term spatial development of the county for a period of 30 years. They cover the entire county and defines the general trend and direction of its spatial development.

The guidelines have been developed in line with the four thematic areas as outlined in the NSP. They provide a guide to the Planning Authority at the county on how to incorporate the NSP policies, strategies and measures during the preparation of County Spatial Plans and other lower level plans like the Local Physical and Land Use Development Plans consequently implementing the NSP.

The NSP County Specific implementation guidelines summarize the County's existing potentials and opportunities, the constraints (challenges) inhibiting harnessing of the potentials, the applicable strategies and respective policies required, and the necessary measures to achieve optimal productivity, sustainability, efficiency and equity in the use of the county land resources. They act as a reference point.

1.2 Purpose

The purpose of the County Specific Guidelines is to provide a planning framework for mainstreaming of the National Spatial Plan to the County spatial planning system.

The guidelines are intended to assist the County enhance the implementation of the NSP by linking the proposed county specific policies, strategies and measures into the County plans, programs and projects while putting measures in place for achieving them. The guidelines inform preparation of various County Physical Plans such as the County Physical and Land Use Development Plans.

For optimal implementation of these plans, a County Integrated Development Plan (CIDP) is essential since it is a sectoral and budgetary based plan that draws its implementation programs and projects from the County Physical Plans.

1.3 Objectives

The guidelines provide policies, strategies and measures to deal with challenges of regional imbalances/inequalities, rural development, underutilization of the available resources, urbanization, environmental degradation and inefficient transportation.

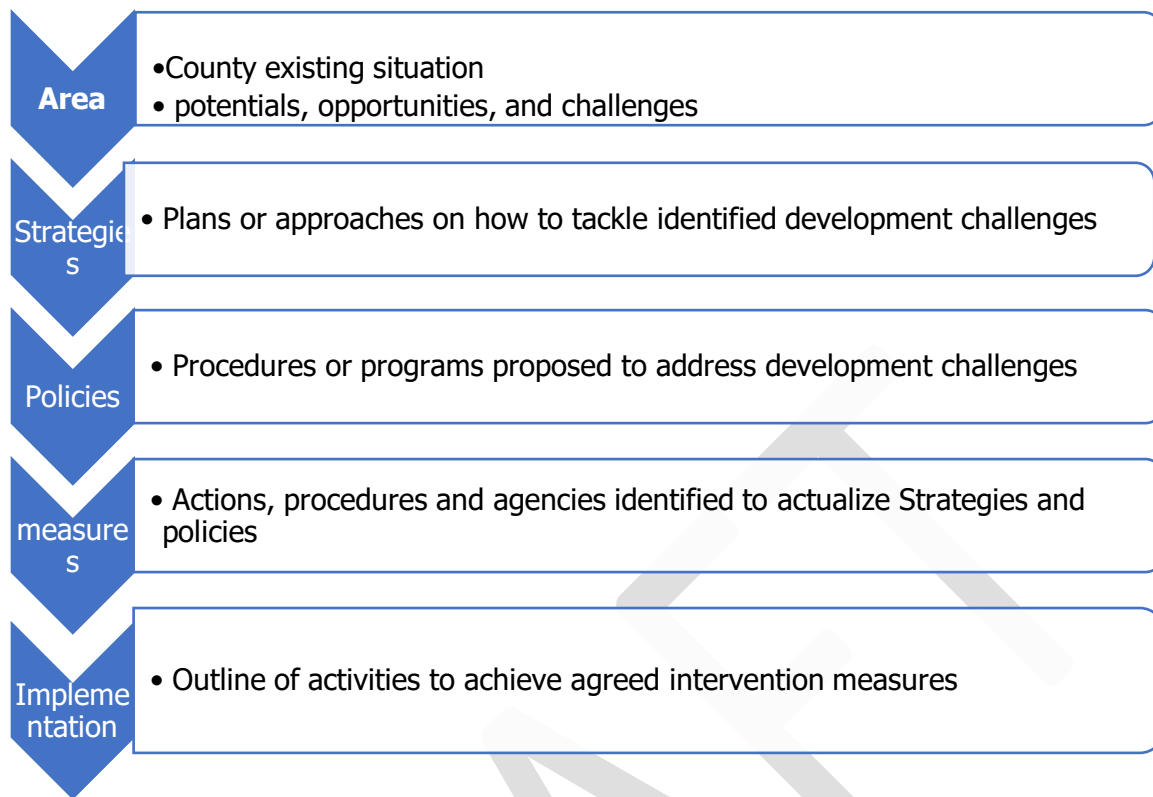
Specifically, the objectives are;

1. To sensitize the County on the provisions of the NSP
2. To promote synergy between National and County planning
3. To guide the County, implement the NSP
4. To identify the roles of the different actors in the implementation of the NSP.

1.4 Scope

The guidelines comprise policies, strategies and measures specific to Nandi County covering approximately 2037 km². The guidelines highlight the County's existing potentials and opportunities, the constraints (challenges) inhibiting harnessing of the potentials, the applicable strategies and respective policies required, and the necessary measures, actions, approaches, plans and procedures prescribed to achieve optimal productivity, sustainability, efficiency and equity in the use of the county's land resources and an outline of activities to execute agreed interventions as captured in the National Spatial Plan, as indicated in Figure 1 below. These guidelines are effective up to the year 2045.

FIGURE 1: THE SCOPE OF THE GUIDELINES



Source: State Department for Physical Planning, 2022

1.5 Justification

Since the approval and launch of the NSP, its implementation has been undertaken in an uncoordinated manner hence the guidelines will provide a standardized approach for all Counties. The guidelines are also an important tool for tracking and evaluating implementation of the NSP both at National and County levels.

The preparation of County Spatial Plans and other lower-level plans which is a mandate of Counties has been slow and, in some Counties, has not begun at all. These guidelines are therefore a quick reference in preparation of county plans and for some Counties to help optimize land in the absence of these plans.

1.6 Application of the guidelines

The guidelines will be used or applied in the following ways to achieve a more sustained and coordinated development of the County;

- To effectively coordinate planning between the National and the County Government;

- To improve the County Government’s capacity to formulate, coordinate and implement integrated development policies, strategies, measures, programs and projects to address spatially unbalanced development;
- To inform strategic infrastructure policy and public investment decisions which support the achievement of balanced development in the County;
- To strengthen County inter-sectoral coordination within a spatial framework and provide the private sector with a clear context in which they can make investment decisions;
- To optimize the use of land and natural resources by providing a framework for making sustainable locational choices for sustainable development and conservation of land productivity in the County.

1.7 Process Of Preparing the Guidelines

The process involved reviewing the National Spatial Plan and identifying key issues, spatial policies, development strategies and measures specific to Nandi County. These key issues, spatial policies, development strategies and measures will be realized through preparation of County and other lower-level plans.

Research was undertaken on various thematic areas to enrich the County specific issues and development strategies as well as policy guidelines and measures/ interventions. Further, preparation of the guidelines considered the constitutional, policy and legal provisions on physical and land use planning. Expert opinion was sought on the identified issues, policies, measures and strategies for implementation viability.

The preparation of the guidelines was identified as one of the implementation tools of the NSP, in which key NSP issues, policies, strategies and measures were translated into specific action plans, programs and projects at the County level.

1.8 Targeted Users

These Guidelines have diverse consumers and application depending on prevailing circumstances and actors as demonstrated in Table 1 below:

TABLE 1: TARGETED USERS OF THE GUIDELINES

User	Application
------	-------------

<p>County Executive Committee Member in charge of Physical and Land Use Planning</p>	<ul style="list-style-type: none"> • Preparation of county and lower-level plans • Linkage of planning structures • Quality control of the various county plans • Formulate county planning policies and strategies • Establish county specific planning institutions • Coordinate and implement county plans and policies
<p>The County Director of Physical and Land Use planning</p>	<ul style="list-style-type: none"> • Advising the county government on the impact of the county specific guidelines to the county • Preparation of County physical and land use development plans and other lower level plans • Formulating County physical and land use planning policies, guidelines, strategies, and standards; • Issuance of development permission and other development control instruments under The Physical and Land Use Planning Act, 2013.
<p>Licensed physical and land use planners both in public and private sectors</p>	<ul style="list-style-type: none"> • Prepare, coordinate and implement spatial plans • Quality control of plans and consultancy services • Formulate policies, strategies and development guidelines • Dispute resolution
<p>County assembly</p>	<ul style="list-style-type: none"> • Approval of strategic sectoral budgets such as planning • Vetting of various County specific plans • Formulation and passing of County planning legislation • Enhance capacity to oversee the executive on spatial planning
<p>Ministries, Departments</p>	<ul style="list-style-type: none"> • Mainstreaming relevant NSP policies, programs and projects

and Agencies	<ul style="list-style-type: none"> • Allocation of resources to priority areas, • Strengthening linkages with spatial planning in resource management
The National Land Commission (NLC)	<ul style="list-style-type: none"> • Oversight role in land use planning to ensure efficient implementation of the NSP • Ensure relevant planning authorities carry out their functions as required by the law
Practitioners in the built environment	<ul style="list-style-type: none"> • Advance NSP relevant policies, programs and projects hence optimization of land resource • Appreciate sectoral Linkages to spatial planning • Facilitate incorporation of the policies, strategies and measures into, County specific plans
Community, developers and investors	<ul style="list-style-type: none"> • Comprehend the County priority sectors and County Plans and policies • Complement County spatial planning and implementation measures • Making informed investment decisions
Development partners	<ul style="list-style-type: none"> • Reference frame for selecting and funding spatial planning activities • Understand planning linkages and implementation • Informed development decisions
Training institutions	<ul style="list-style-type: none"> • Compliment the curriculum for training of spatial planners • Understand the planning procedures and processes

1.9 Key Principles

The principles, as applied in the NSP, should guide and form the basis upon which the lower-level physical and land use plans are prepared. Further the principles should ensure sustainable, coordinated, and realistic development. They include the following:

- 1. Effective Public participation/engagement:** All plans shall be prepared in a participatory and consultative manner with relevant stakeholders and sectoral actors.
- 2. Urban containment/Compact cities:** Local plans shall strive to limit and control urban growth within the set urban boundaries to protect rich agricultural land, mitigate urban sprawl and reduce cost of infrastructural provision.
- 3. Liveability:** The planning of urban areas shall enhance the liveability index in the area of housing, environment, transportation, health, and social engagement. The urban areas must be economically viable, socially inclusive and ecologically sustainable.
- 4. Smart and green urban growth:** Plans shall promote sustainable use of energy, creation of green spaces, reduce the need for car travel, and promote use of local materials, support businesses, protection of heritage and creation of unique character.
- 5. Sustainable development:** Balancing social, economic and environmental dimensions of development and catering for current and future generations.
- 6. Promotion of ecological integrity:** Plans shall promote the protection and conservation of environmentally sensitive areas.
- 7. Promote public transportation:** Favor public transportation over private transport to ensure efficiency and functionality of urban places.
- 8. Balanced development:** Plans to ensure there/ is balanced development in the County to cure inequalities.

CHAPTER TWO: THE POLICY, LEGAL AND PLANNING FRAMEWORK FOR THE GUIDELINES

2.1 Constitutional context

The formulation of these guidelines took into account the Constitution of Kenya 2010 aspirations and Principles. Article 66 of the Constitution of Kenya 2010 gives the State powers to regulate use of any land and property in the interest of land use planning among others. The Fourth Schedule of the Constitution assigns the National Government the role of capacity building and technical assistance to the counties.

2.2 Policy Context

2.2.1 Sessional Paper No.10 of 2012 on Kenya Vision 2030

Kenya Vision 2030 is the overarching national development framework which all plans should be aligned to. The preparation of all spatial plans should take cognizance of the aspirations, foundations and development concepts of the vision. The preparation of the first National Spatial Plan is identified in Kenya Vision 2030 as a flagship project and is regarded as one of the foundations for socio-economic transformation. Hence the need for linkage between national planning and county planning which will be achieved through mainstreaming NSP requirements into CSPs and other lower-level plans by preparing NSP county specific guidelines to implement the NSP at lower levels.

2.2.2 Sessional Paper No. 1 of 2017- National Land Use Policy

The policy was formulated to address the various challenges related to land use and ensure efficient, productive and sustainable use of land. The main goal of the policy is to provide legal, administrative, institutional and technological framework for optimal utilization and productivity of land related resources in a sustainable and desirable manner at national, County and community levels.

The policy recommends the preparation of a National Spatial Plan to provide an integrated framework for the development of the country including guidelines for sustainable rural and urban planning management. The policy also provides for the preparation of planning guidelines, policies and standards to be observed by County Governments and other sectoral agencies within the frameworks of approved physical and land use development plans. These guidelines have been prepared on this basis and they are to be observed by counties in the implementation of the National Spatial Plan.

2.3 Legal context

Various Acts of Parliament are in place to provide the legal framework for the implementation of the mandate provided for in Article 66 of the Constitution. The Physical and Land Use Planning Act, 2019, The Urban Areas and Cities (Amendment) Act, 2019, County Governments Act No. 17 of 2012, The Land Act No. 6 of 2012, National Land Commission Act No. 5 of 2012 among others. The NSP County specific guidelines are prepared in this context and meet this criterion.

2.3.1 The Physical and Land Use Planning Act, 2019

This is the overarching statute that provides for formulation of both National and County physical and land use planning policies, guidelines and standards. The Act further provides for administration, types, content, process and approval of the various types of Physical and Land Use Development Plans.

2.3.2 County Governments Act, 2012

This statute mandates County Governments to carry out the planning function at the county level. The guidelines support preparation of the various county level plans that meet the recommended quality and standards.

2.3.3 The Urban Areas and Cities (Amendment) Act, 2019

The statute provides for classification of urban areas and cities, their governance and management, and for integrated development planning. The guidelines are a basis for preparation of these lower-level plans.

2.3.4 Environmental Management and Coordination (Amendment) Act, 2015

The Act provides for the establishment of an appropriate legal and institutional framework for the management of the environment as well as guidelines relating to environmental management and prevention or abatement of environmental degradation. The guidelines take cognizance of this Act and will be implemented within the framework

2.3.5 National Land Commission Act, 2012

The Act mandates the National Land Commission with the management and administration of public land on behalf of the National and County Governments and to monitor and oversight physical and lands use planning in the country. The guidelines fall within the ambit of this statute and will facilitate their oversight responsibilities.

2.4 Planning Context

2.4.1 National Spatial Plan (NSP)

The National Spatial Plan (NSP) covers the whole country encompassing the exclusive economic zone. The NSP outlines policies and strategies geared towards influencing desired future distribution and organization of human activity outlined in Vision 2030 and sectoral policies and plans. It aims at achieving economic efficiency and balanced development. The various County Spatial Plans should be aligned to the policies outlined in the NSP as demonstrated in Figure 2 below.

FIGURE 2: POLICY FOCUS OF THE NSP



Source: National Spatial Plan, 2015-2045

To actualize the NSP, a comprehensive implementation strategy has been proposed that embraces a multiplicity of actors including National Government Ministries, Departments and Agencies, County Governments and the National Land Commission. The strategy proposes the establishment of the following institutions as key in the implementation of the Plan; The National Physical Planning Council, the National Technical Committee and the County Physical Planning Committee.

2.4.2 NSP linkage to other plans

The linkage of the National Spatial Plan (NSP) to county and other lower-level plans is key to realization of its aspirations and the successful actualization of these plans. The

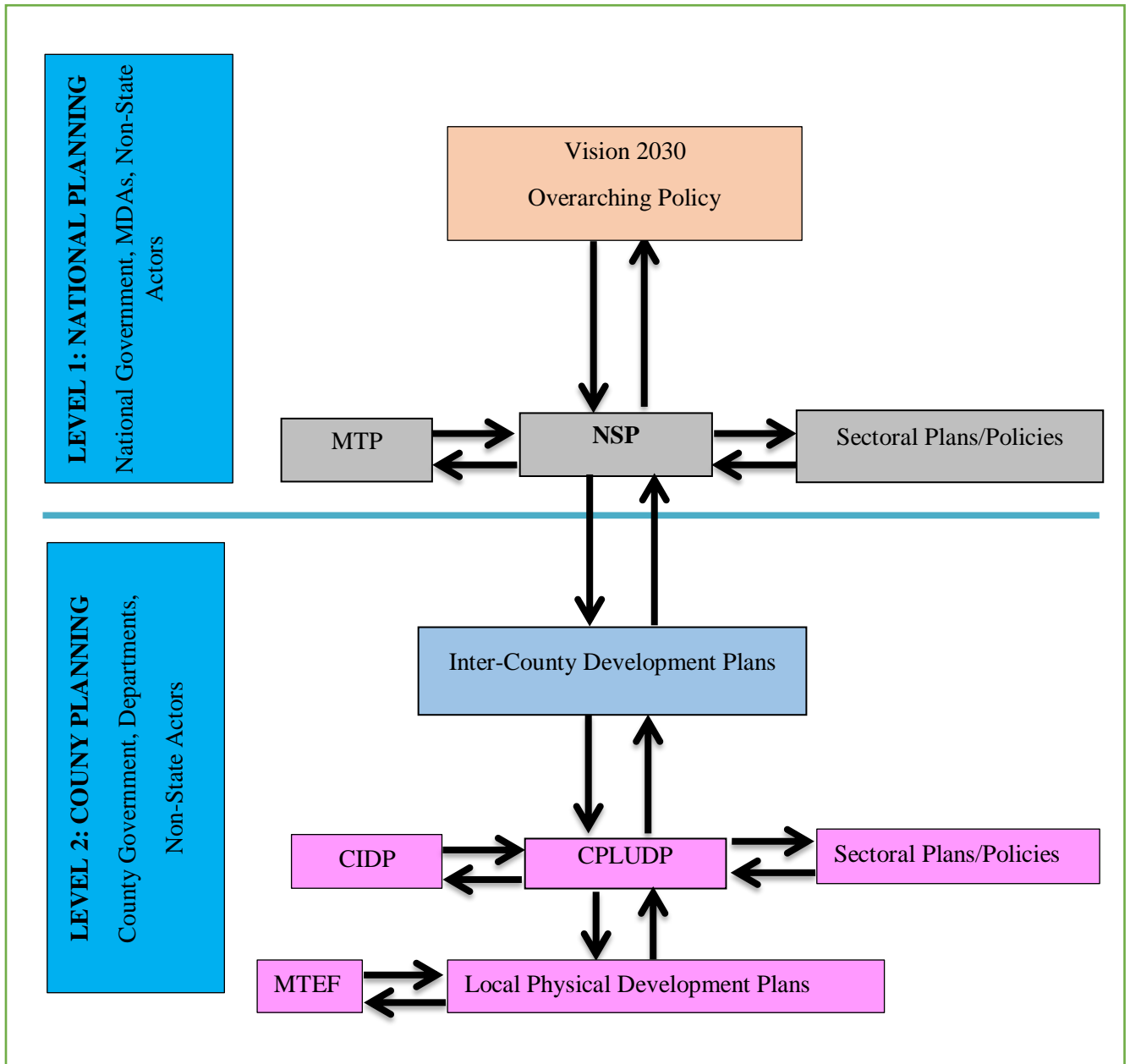
NSP provides a spatial framework to ground the Vision 2030 flagships projects and form a basis for coordination of County policies, strategies, measures and plans.

Inter County and County plans take into considerations the policies, measures and strategies of the NSP and implements them actualizing its aspirations.

County Physical and Land Use Development Plans provide a framework where the CIDP draws its programs and projects. The implementation of the CIDP in turn leads to realization of the objectives of the County Physical and Land Use Development Plan.

DRAFT

FIGURE 3: NSP LINKAGE TO OTHER PLANS



SOURCE: THE NATIONAL SPATIAL PLAN, 2015-2045

CHAPTER THREE: COUNTY PROFILE

3.0 Introduction

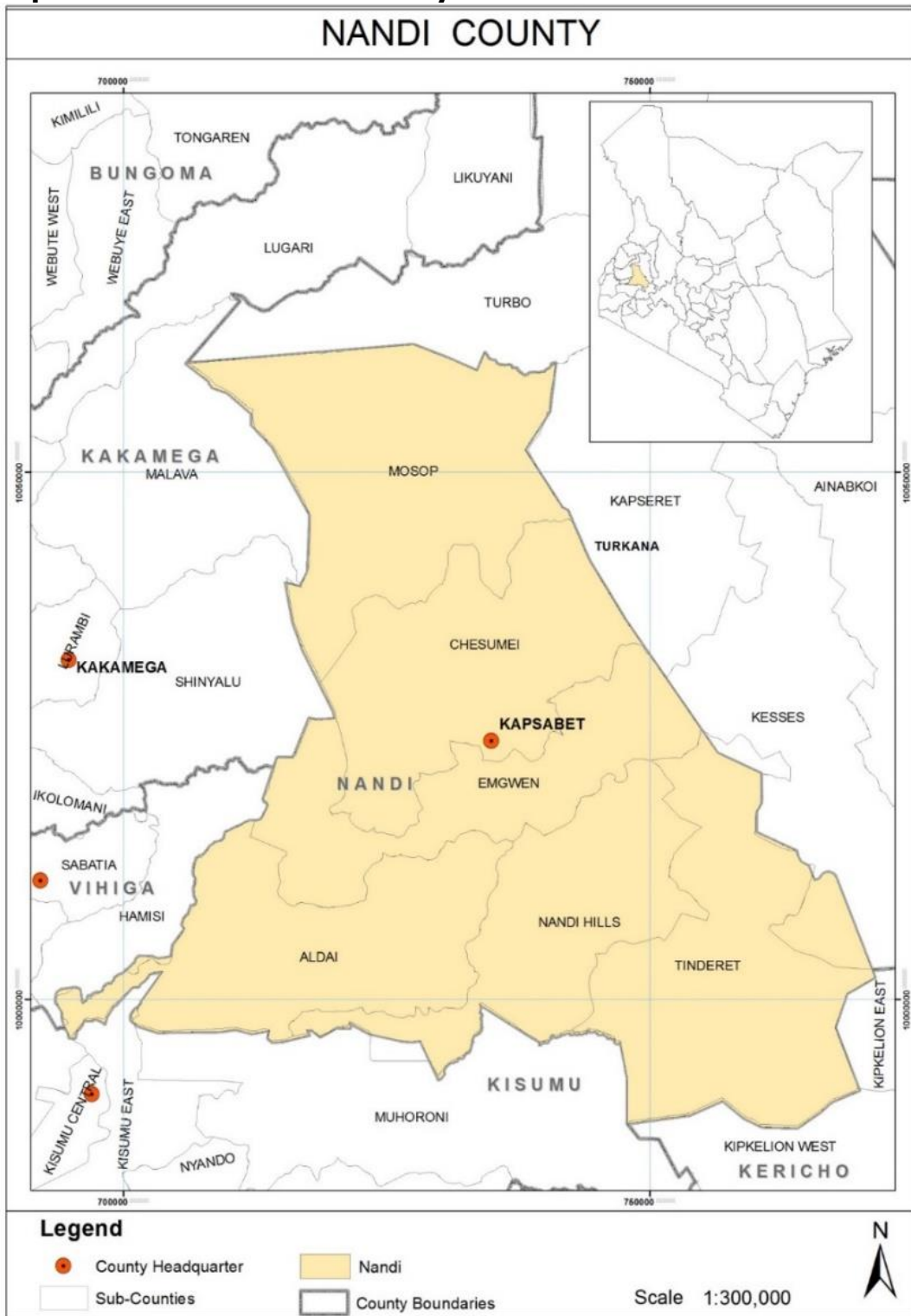
This chapter provides an overview of the county profile by highlighting on the geographic location of the county, the bio-physical features, the socio-economic status and the comparative advantages of the county.

3.1 Location context

Nandi County is located in the North Rift region of Kenya between longitudes 34°45'E and 35°25'E and on Latitude 0°34'N and covers an area of 2,884.4 sqKm. It borders Kakamega, Nandi, Kericho, Kisumu and Vihiga counties. The county has 30 wards, and 6 Sub-Counties.

The map below shows both the national position of the county in the inset and the overall extents of the county.

Map 1: Location of Nandi County



Source: State Department for Physical Planning, 2022

3.2 Bio - Physical Features

Topography: Nandi County comprises of five distinct topographic features: the rolling hills to the West, the Kapsabet plateau, the Tinderet Volcanic mass, the King'wal Swamp and the Nyando escarpment on the Southern border. There overall county altitudes range from 2020M to 2500M Above Sea Level

Relief: There are six permanent rivers flowing through the county.

Soils: Main soil type is rich volcanic soil makes Nandi an ideal area for tea, maize and sugarcane farming.

Forests: Forests in Nandi County comprise 12 percent of the total land area and comprise of mixed indigenous hardwoods and exotic plantations. The main forest products are timber, wood fuel, poles, grass, herbs and medicines.

Ecological conditions: divided into two main ecological zones that is the (LH1 and UM1). Approximately 80 percent of the County is arable.

Climatic conditions: the overall county climate is cool and wet. The County receives an average rainfall ranging from 1200mm to 2000mm per annum. The County in general has moderate to warm temperatures with no cold and hot extremes throughout the year whose range is 14°C-26°C

Mining: there are gold deposits in Tinderet Sub-County whose main mining operator is the Kerebe Gold Mining Company. Other minerals mined through quarrying are sand, murrum and ballast

Tourism: The county has a wide variety of tourist attractions categorized as follows nature and wildlife (Bonjoge National Reserve, Nandi Rock, South Nandi Forest, Kingwal Swamp, bird species) Agro-tourism (rolling tea plantations); Sports tourism (cool highland climate); Eco tourism (landscapes); and Cultural tourism (strong heritage). Also available is support infrastructure such as hotel accommodation.

Land and land Use Patterns: Land is the most important resource from which the county generates goods and services for the people. The county's economy is primarily agro-based where approximately 85% of the population derives its livelihood from land. The NSP classifies land into various agro-climatic zones using which it bases its elaboration on the suitability of an area for a particular land use. Nandi is thereby

classified as a high potential agroclimatic zone. Majorly the existing land uses in the county are;

- i. Agricultural
- ii. Built up areas
- iii. Conservation

Nevertheless, changes in land use patterns have been observed in many parts of the county and the main reasons for these changes include;

- i. Increasing population
- ii. Rising demand for food and other cash crops
- iii. Increasing urbanization
- iv. Rising standards of living

3.3 Socio-economic Characteristics

Population: According to the 2019 Kenya population and housing census, the county population stood at 885,689 constituting of 441,259 males 444,430 females and 22 intersex persons. The population density of the county is 310 people per square kilometer with an annual growth rate of 2.9%. Population projections for the planning period of the NSP lasting to 2045 were made to aid in preparing the guidelines as shown in the table below.

Table 2: Population projection to the year 2045

year	2019	2020		2025		2030		2035		2040		2045	
Population size	885,689	911,374		1,051,414		1,212,972		1,399,355		1,614,377		1,862,439	
		<i>M</i>	<i>F</i>	<i>M</i>	<i>F</i>	<i>M</i>	<i>F</i>	<i>M</i>	<i>F</i>	<i>M</i>	<i>F</i>	<i>M</i>	<i>F</i>
		454,056	457,319	523,825	527,590	604,315	608,658	697,173	702,183	804,299	810,079	927,886	934,554
house holds	199,426	207130		238958		275675		318035		366904		423282	
Area - SqKm	2,884.4	2,884.4		2,884.4		2,884.4		2,884.4		2,884.4		2,884.4	
Density	307	315		365		421		485		560		646	

Source: State Department for Physical Planning, 2022

Human settlement: Human settlements in the County consists of Rural settlements that are generally characterized by a dispersed pattern of homesteads and low population density while urban settlements that are compact and densely populated.

Housing: The main housing types in the County are mud/wood houses; brick/block houses; mud/cement houses; stone houses; and, timber houses

Education: There are pre-school facilities i.e. ECDE centres; public and private primary schools; secondary schools and tertiary institutions i.e. TVETs, colleges/polytechnics, universities

Health: presence of level five, level four, level three, level two and one healthcare facilities that offer healthcare to the residents in the county.

Sports, culture and creative arts: The county is famed as a giant sporting county going by the slogan “source of champions” due to its prowess in producing world record athletes. Talent development programs and some facilities have been established in the county to further sporting activities. The county is also rich in cultural heritage and hosts one major museum, cultural sites, monuments and shrines

Agriculture: Favorable climatic conditions and soils that support large scale agriculture whereby largescale maize farming is most dominant. Other crops grown are tea, coffee, sugarcane, pyrethrum. Subsistence, fish and dairy farming is also practiced. Some Irrigation schemes are also established to exploit the agricultural potential of the county.

Economy and Industry: The main economic activity carried out in the county is agriculture. Athletics is also a major economic activity in the county. There are 15 major tea factories in the County, and a number of cottage, agro-based and value additive industries.

Physical Infrastructure: Infrastructure is key to the achievement of the National Spatial Plan objectives. Nandi county has fairly developed infrastructure including public utilities, physical and social infrastructure all of which have a high potential of economically empowering its People and attracting private investors if well maintained. The sector faces challenges such as poor connection and integration, low coverage, unreliability, high costs and skewed distribution. To rectify this situation, clear indicative policy, strategies and measures have to be developed and implemented to achieve overall

efficiency. Further, to meet the demands of a growing population, there is need to develop and enhance existing economic infrastructure such as water services, waste management, energy and ICT to provide the foundation for economic development.

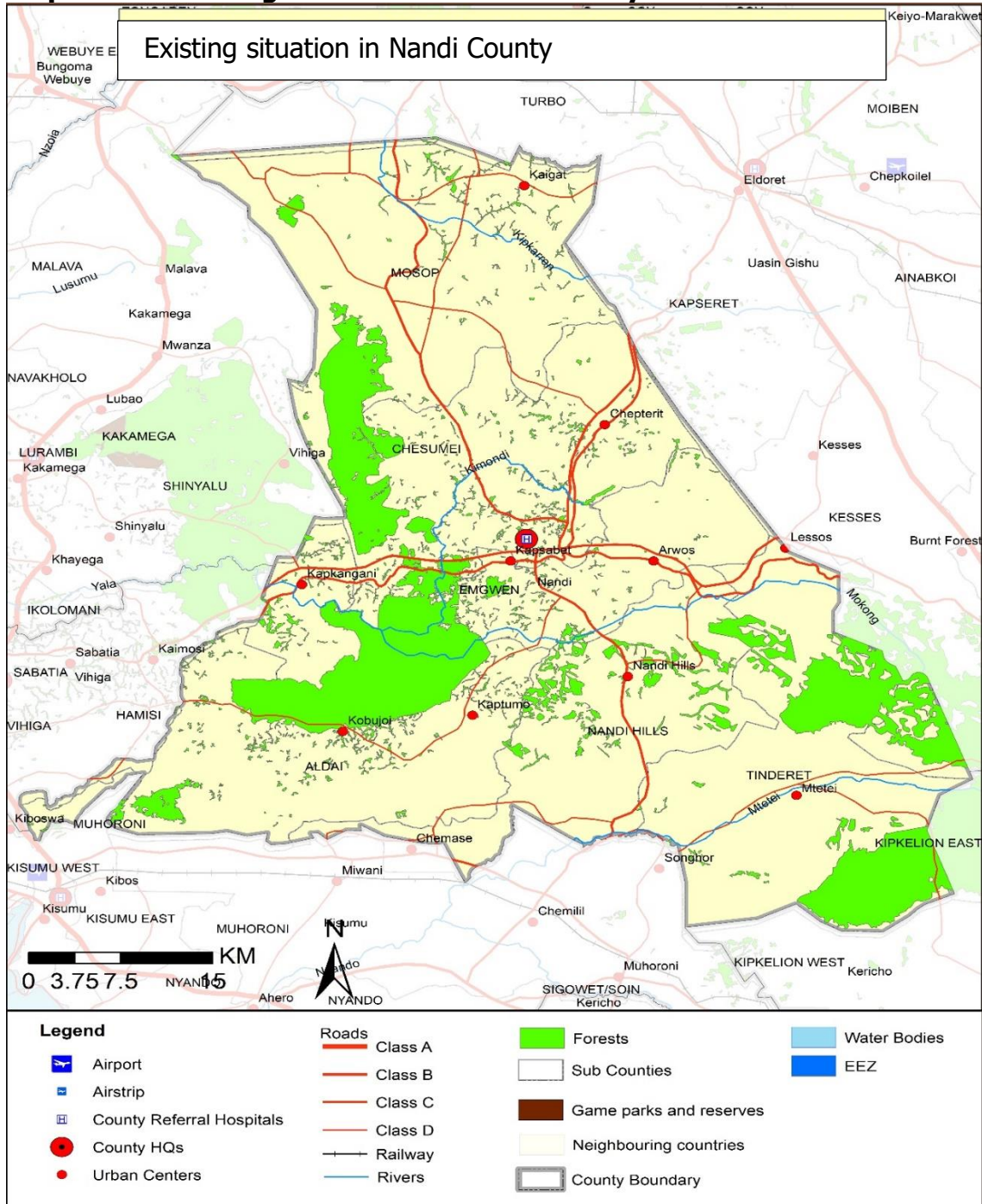
Transportation: Road is the dominant transport mode in the county. The road network is extensively developed to connect Nandi with its neighboring counties. The county is however limited on other modes such as rail and air whose infrastructure is underdeveloped or yet to be established thereby relying on the neighboring counties for these alternatives.

3.4 The County's Comparative Advantage

1. The county's pleasant climate suitable for agriculture
2. Deep volcanic soils suitable for growing various types of crops including tea, coffee, sugarcane, maize, beans, sorghum, finger millet, sweet potatoes and cassava
3. High altitude conducive for athletics training and sport tourism
4. Presence of minerals such as sand, murram, ballast and gold
5. There are various tourist attraction sites and activities
6. Availability of rivers and dams to support Irrigation via various schemes
7. Existing research institutions
8. Existing agro-based and cottage industries

The Map below shows existing situation of the County as discussed in the NSP as potential focus areas as infrastructure and natural resources to stimulate overall growth.

Map 2: The Existing Situation in Nandi County



Source: State Department for Physical Planning

CHAPTER FOUR

4.1 County Specific Issues ,Development Strategies and Policy Guidelines

This section seeks to provide strategies for spatial growth and development of the county by addressing factors that prevent the county from achieving the intended national goals and objectives. The strategies are aimed at providing a spatial expression as envisioned by the Kenya Vision 2030 and other sector policies.

The various strategies as is in the NSP are discussed in the Table below that lists the opportunities, constraints and strategies applicable to the county.

DRAFT

Table 3: County Specific Issues and Development Strategies

4.1.1 DEVELOPMENT STRATEGY: Enhancing National Competitiveness		
OPPORTUNITY	CONSTRAINTS	STRATEGIES
<ul style="list-style-type: none"> • Grain basket county with prime agricultural land • Open market for high quality goods and services • production of raw agricultural produce 	<ul style="list-style-type: none"> • High cost of production occasioned by high cost of energy, inefficient transport system, outdated technology and bureaucracy. • Low quality of products and services • Insufficient economic integration in the existing blocks. • Low quality of products and services which cannot compete favorably in the markets. • Insufficient embrace and transition to knowledge, technology and innovation-based production 	<ul style="list-style-type: none"> • Optimize on land as a high value resource for exploitation • Do product value addition • Integrate and capitalize on the open markets for goods and services • produce efficiently in all economic sectors of manufacturing and industry, service industry and agriculture to improve on product price competitiveness. • Encourage cooperation in planning with other counties to leverage on economies of scale for production arising from integration. • Embrace ICT and innovation transition in production.
4.1.2 DEVELOPMENT STRATEGY: Optimizing Use of Land and Natural Resources		
SECTOR: AGRICULTURE		
OPPORTUNITY	CONSTRAINTS	STRATEGIES
<ul style="list-style-type: none"> • The county is a Prime agricultural area in the agro-ecological zone II. • Irrigation potential area with a variety of water sources • Aquaculture potential area with a variety of water sources and land 	<ul style="list-style-type: none"> • Uneconomical fragmentation of land parcels due to human settlements • Inadequate agricultural support infrastructure 	<ul style="list-style-type: none"> • Strictly regulating the fragmentation of agricultural land • Provide agricultural support infrastructure to match the function • Adopt modern methods and practices as well as technology in

<ul style="list-style-type: none"> • Enjoys moderate climate throughout the year that supports crop production. 	<ul style="list-style-type: none"> • Use of inappropriate farm inputs and technology • Lack of adequate equipment and technology to tap fishing potential. 	<p>the whole range of agricultural capabilities that the county has.</p> <ul style="list-style-type: none"> • Provide subsidies on fishing equipment and undertake research on best fishing practices
<p>SECTOR: HUMAN SETTLEMENTS (HOUSING)</p>		
<ul style="list-style-type: none"> • Adequate land for housing • Availability of local building materials and technology that are more affordable • There is room for public-private partnerships in the provision of housing • National land reforms established a GIS based National Land Information Management System (NLIMS) for land management 	<ul style="list-style-type: none"> • Lack of enforcement of existing legislation on housing development and land use • Little government involvement in housing provision which has left in the hands of private developers • Inadequate transport, infrastructure and utilities 	<ul style="list-style-type: none"> • Enforce and regularly review the existing legislative and regulatory instruments governing land-use planning, administration and management • Provide serviced land (infrastructure and utilities) for housing development. • Provide incentives to developers or prospective home owners • Regularly undertake inventory of all the existing settlements to establish the insufficient services and infrastructure for purposes of upgrading them to more habitable dwelling areas • Re-planning and re-development of the existing housing estates that do not provide for maximum permissible or highest and best use of land
<p>SECTOR: SOCIAL INFRASTRUCTURE</p>		
<ul style="list-style-type: none"> • Existing established education infrastructure and institutions • Existing established health infrastructure and institutions 	<ul style="list-style-type: none"> • Insufficient infrastructure to support learning activities. • Underdeveloped sporting infrastructure 	<ul style="list-style-type: none"> • Expand the capacity of existing education institutions in terms of infrastructure and personnel to increase access

<ul style="list-style-type: none"> • Existing established sport institutions and programmes 	<ul style="list-style-type: none"> • Inefficient institutional organization for management • High numbers of patients, straining the available health infrastructure and resources 	<ul style="list-style-type: none"> • Revamp and upgrade the existing sporting infrastructure • Establish and properly constitute Management Boards for various institutions • Invest in improving overall healthcare delivery in the county • Frequent evaluation of conditions of infrastructure and equipment for replacement, repair and maintenance be emphasized in all public facilities
SECTOR: TRANSPORT		
<ul style="list-style-type: none"> • Existing road networks and infrastructure linking the various parts of the county 	<ul style="list-style-type: none"> • Most roads are in poor condition • Lack of coordination of activities by various agencies in charge of the sector • Lack of NMIMT infrastructure • Missing links (poor connectivity) • Inadequate linkages with neighboring counties and integration with other modes of transport 	<ul style="list-style-type: none"> • Provide adequate, appropriate transport infrastructure to support the exploitation of the high potential areas in the county. • Optimize and leverage on the existing transport infrastructure. • Promote the use of green transport by providing relevant infrastructure. • Plan, provide and invest in transport of the county to improve on the internal and external linkages to the county • Prepare and implement sustainable mobility plans
Environment (Conservation & Protection Areas)		
<ul style="list-style-type: none"> • Lowland Conservation area with diverse biodiversity 	<ul style="list-style-type: none"> • Soil erosion and declining water quality from water 	<ul style="list-style-type: none"> • Strict soil erosion control measures be put in place

<ul style="list-style-type: none"> • Rank 1 Protection Area that hosts Water towers, Wetlands Natural forests 	<ul style="list-style-type: none"> • Pollution caused by extensive cultivation along river banks • Loss of vegetation • Encroachment by human settlement and activities • Pollution • Deforestation 	<ul style="list-style-type: none"> • Increase forest cover through afforestation, re-afforestation and agro forestry • Development restrictions in the protected areas except for the purpose of eco-tourism and research • Formulate and enforce policy frameworks to contain human settlement and hinder land use change within these areas. • Delegation and gazettement of delineated natural forests, wetlands and water towers. • Rehabilitation of wetlands, water towers and natural forests in the county
Natural Resource		
<ul style="list-style-type: none"> • The County is an agricultural potential region with abundant natural resources in the form of rich agricultural soils, wildlife (flora and fauna), mineral deposits, energy resources, surface and underground water. 	<ul style="list-style-type: none"> • Underutilized resources due to inadequate technology and exploration infrastructure • High costs of exploiting available natural resources • Uncoordinated exploitation of underground water 	<ul style="list-style-type: none"> • Optimal utilization of the available natural resource potential • Invest in appropriate technology and infrastructure -Undertake further exploration of the available natural resources. • Regulate the exploitation of underground water potential and optimize the use of underground water • Formulate Regulations to control the exploitation of natural resources sustainably for economic growth

Industry		
<ul style="list-style-type: none"> • High potential for Agro-based industries • High potential for Rural based industries • Availability of mineral-based industries 	<ul style="list-style-type: none"> • Low technological adaptation for value addition • Price fluctuations • Poor linkages to the markets due to poor transportation and support infrastructure • Price fluctuation • Lack of appropriate equipment and technology for exploration and exploitation 	<ul style="list-style-type: none"> • Provide appropriate technology to enhance value addition. • Promote the formation of cooperatives and Saccos to advance marketing • Provide adequate transport and support infrastructure • Invest in exploration of potential mineral reserves
Tourism		
<ul style="list-style-type: none"> • Safari Tourism • Potential for Rural /Agri-Tourism 	<ul style="list-style-type: none"> • Underexploited tourism potentials • Low number of visitors • Encroachment of human activities into the tourist attraction sites • Poor marketing strategies to promote tourism 	<ul style="list-style-type: none"> • Diversify the tourism products • Open up the underutilized sites • Promote domestic tourism by providing incentives and subsidies • Strict enforcement of the existing regulations for safeguarding protection areas • Invest in ICT infrastructure for more assertive marketing to capitalize on online marketing
Public Utilities: Water and Sanitation		
<ul style="list-style-type: none"> • Availability of water sources 	<ul style="list-style-type: none"> • Population increase resulting to high demand surpassing its supply • Inadequate sewerage coverage and treatment facilities 	<ul style="list-style-type: none"> • Appropriate sanitation infrastructure including collection, disposal and treatment system be developed and upgraded to cover and meet the growing demands of the population.

	<ul style="list-style-type: none"> • Contamination of the available water (Water pollution) • Unreliable access to clean, sufficient water 	<ul style="list-style-type: none"> • Existing water bodies and wetlands should be protected and rehabilitated • Develop appropriate water reticulation network to promote equitable water distribution throughout the county
Public Utilities: Energy and Solid waste management		
<ul style="list-style-type: none"> • Availability of resources for green energy (sunshine) 	<ul style="list-style-type: none"> • Lack of proper assessment and research on sustainable exploitation of green energy potentials in the county. • Lack of relevant policy that guide the tapping and use of energy resources • Rapid population growth and urbanization that is escalating the amount of solid waste generated • Inadequate system and facilities for solid waste management. 	<ul style="list-style-type: none"> • Assess, available energy sources; and then harness transmit and distribute • Develop a policy to guide the exploitation and use of potential green energy sources • Construction and upgrading of integrated solid waste facilities to enable the proper collection, sorting, treatment and disposal of solid waste • Promote and apply the reduce, reuse and recycle guidelines.
ICT		
<ul style="list-style-type: none"> • Existing National Fiber Optic network (NOFBI) 	<ul style="list-style-type: none"> • Poor access to ICT infrastructure • High costs, skewed distribution and access to ICT services and infrastructure. 	<ul style="list-style-type: none"> • Provide relevant ICT infrastructure and improve existing networks • Mainstream ICT at all sectors to promote service, increase efficiency and productivity and improve on existing platforms
4.1.3 DEVELOPMENT STRATEGY: Promoting Balanced Intra-County development		
OPPORTUNITY	CONSTRAINTS	STRATEGIES

<ul style="list-style-type: none"> • Potential for Rain fed and irrigated agriculture • Potential for Fishing • Potential for Tourism • Resource endowment • Potential for Urbanization • Enabling policy framework 	<ul style="list-style-type: none"> • Inadequate infrastructural facilities and services • Under-exploitation of resources • Weak rural-urban linkages • Inefficient and dilapidated infrastructure facilities and services • Slow adoption of technology and innovation 	<ul style="list-style-type: none"> • Promote Irrigation activities for improved productivity in quantity and quality of yield • Promote investment in sustainable tourism • Encourage equitable exploitation and sound management of resources while ensuring local participation for improved economic development • Promote industrialization and value addition through the provision of support infrastructure • Strengthen the established economic block in the region • Promote rural industrialization which includes, rural tourism, and agro-based industries through establishment of production units in different rural areas in relation to their potential • Promote urban containment to reduce effects of urban sprawl into rich agricultural land as well as encouraging eco-villages in the rural areas. • Full implementation of the policies.
---	--	--

4.1.4 DEVELOPMENT STRATEGY: URBANIZATION

OPPORTUNITY	CONSTRAINTS	STRATEGIES
<ul style="list-style-type: none"> • Devolution • Existing urban areas and proposed developments 	<ul style="list-style-type: none"> • Inadequate and inefficient transport and infrastructure • Lack of Functional/role Specialization • Skewed Spatial Distribution of Urban Centres 	<ul style="list-style-type: none"> • Promote the development of centers as per their potential and population as local, market, rural, urban centers and growth centers. • Provide alternative areas for development of urban centers by provision of services and infrastructure closer to the rural areas thus urban containment and stimulating rural growth.

	<ul style="list-style-type: none"> • Poor Solid Waste Management • Inequality in Urban Areas • Land and Governance Issues 	<ul style="list-style-type: none"> • Strengthen urban-rural linkages through provision of integrated transportation and communication system to reduce the rate of urbanization and improve the rural economy. • Promote sustainable waste management • Prepare and enforce Policies and development strategies aimed at improving living conditions as well as reducing the inequalities in urban areas and enhance inclusivity in urban areas • Legislate, Enforce, harmonize and regularly review the existing legislative and regulatory instruments for urban planning and development
--	--	---

DRAFT

4.2 Spatial Policy Guidelines

This section is focused on Policies discussions that are aimed at promoting the achievement of the objectives of these County guidelines.

These policies are supported by a wide range of measures which spell out specific actions to be undertaken to actualize the policy intentions. They provide a foundation upon which to anchor the strategies enumerated above. The policies shall be implemented by the national and county government agencies responsible for planning and development control as well as authorities responsible for land administration. The policies and measures are discussed in the table below:

DRAFT

Table 4: NSP Policy guidelines and measures for the County

THEME	POLICY STATEMENTS	Measures
<p>4.2.1 Resource Potential Growth Region (Region 1: rain fed agricultural potential)</p>	<ul style="list-style-type: none"> • Enhanced agricultural production and value addition Investment in social and physical infrastructure Environmental conservation • Intensive land use • Balanced growth • Densification of built-up area • Environmental conservation 	<ul style="list-style-type: none"> • Construction of key infrastructure to support resource exploitation and development • Resource mapping and exploitation • Environmental protection of sensitive areas, natural resources and mining zones • Utilization of water resources for agriculture and food production • Development and rehabilitation of key infrastructure in underserved locations • Provision of services to the under-served population • Small and medium urban Centres development • Conserve water resources
<p>4.2.2 Spatial Structure</p>	<ul style="list-style-type: none"> • The National Spatial Plan establishes the National spatial structure as a framework to achieve integrated and sustainable physical/spatial development of the country. • The National Spatial Plan shall be the basis for the preparation of lower tier development plans to achieve integrated and sustainable land use planning and to promote harmony and mutual cooperation in planning in Kenya 	<ul style="list-style-type: none"> • All County and Local physical/spatial plans shall be guided by the objectives and policies of the NSP. • Existing physical/spatial plans shall be reviewed to conform to the objectives and policies of NSP. • All sectoral policies shall take cognizance of the objectives and policies of NSP • The review of the 5-year medium term plans (MTP's) shall take into account provisions of the NSP. • Support Planning authorities at the county level with adequate human, financial and technical resources to promote sustainable Physical/spatial planning and development.
<p>4.2.3 Enhancing National Competitiveness</p>	<ul style="list-style-type: none"> • The selective concentration concept shall be adopted for the planning and location of urban based economic activities in all counties to leverage on national competitiveness. • The major urban areas shall be planned and provided with 	<ul style="list-style-type: none"> • Concentrate urban based economic activities through the preparation of Spatial development Plans to guide development of the major urban Centres • Enhance the Livability Index for urban areas by providing quality and affordable housing, efficient public

	<p>appropriate infrastructure to enhance efficiency and quality of life.</p>	<p>transportation, improving neighborhood characteristics, conserve and improve the quality of the environment, quality healthcare, create job opportunities, and promote civic and social engagement</p> <ul style="list-style-type: none"> • Provide appropriate infrastructure in the form of reliable energy, water, sanitation and ICT.
	<ul style="list-style-type: none"> • Land and natural resources of the less developed areas shall be utilized optimally and sustainably to enhance national competitiveness. 	<ul style="list-style-type: none"> • Encourage the transformation from traditional farming and livestock keeping methods to modern practices. • Identify and develop the tourism potential within the county • Explore and exploit the mineral, energy and water potentials. • Provide transportation networks and other infrastructure necessary to support exploitation of land and other natural resources. • Provide technical training and social development programmes to enhance integration of the communities in the county into the modern economy.
	<ul style="list-style-type: none"> • The efficiency of the transportation network shall be enhanced to take advantage of the strategic location and position of the county. 	<ul style="list-style-type: none"> • Provide for robust transportation for efficient, modern and low -cost connectivity by Air, Rail, Road and Fibre Optic • Spatial development plans shall be prepared for the main transportation corridors to guide the planning and development of the corridors for sustainable economic development and transportation
	<ul style="list-style-type: none"> • The county Spatial Plan shall promote development of the Blue Economy and its integration into the economy of the County 	<ul style="list-style-type: none"> • Develop human capacity in partnership with the academia to conduct research, explore and exploit the resources • Develop and apply standards, guidelines and best practices that support a sustainable blue economy. • Develop the requisite infrastructure for the development of the Blue Economy

4.2.4 Modernizing Agriculture	<ul style="list-style-type: none"> • Nandi county, which lies in the Agro climatic zones II shall be safeguarded against the threat of urbanization and land subdivision 	<ul style="list-style-type: none"> • Prepare Urban spatial development plans that shall set urban growth limits • Designate the High potential agricultural land for agriculture production purposes • strictly regulate subdivision of land in the county
	<ul style="list-style-type: none"> • Nandi as a Grain basket area shall be prioritized and protected to ensure food security 	<ul style="list-style-type: none"> • Restrict the conversion of land in the county from agriculture • Divert urban development in the agricultural land • Formulate fiscal measures to support farmers in grain basket areas • Provide appropriate infrastructure to support production, drying and storage of grains
	<ul style="list-style-type: none"> • The use of land in high agricultural potential areas shall be intensified to increase productivity 	<ul style="list-style-type: none"> • Adopt modern agricultural production methods and practices • Upscale the adoption of technology in agricultural production • Promote agri-business
	<ul style="list-style-type: none"> • The irrigation potential of the county shall be optimized by promoting investment in irrigation agriculture for high value crops 	<ul style="list-style-type: none"> • Existing irrigations schemes shall be rehabilitated and expanded. • Undertake research for identification and establishing the irrigation potential throughout the county • Encourage small holder irrigation schemes through sensitization campaigns and reducing the cost of irrigation equipment
	<ul style="list-style-type: none"> • The fishing potential of the county shall be optimized to increase the food stock and export earnings 	<ul style="list-style-type: none"> • Protect the inland fishing resources from over fishing, pollution and destruction of the breeding grounds • Encourage small holder farmers to establish fish farms in areas with potential throughout the county • Provide appropriate infrastructure to support the fishing industry • Increase access to fishing equipment by making them affordable through reduced taxation

4.2.5 Diversifying Tourism (Great Rift Valley Circuit)	<ul style="list-style-type: none"> • The county shall promote diversification of tourism by offering diverse products 	<ul style="list-style-type: none"> • Plan and develop the county to offer; ecotourism, sports and cultural tourism, adventure tourism, agro-tourism and cultural and heritage tourism products
	<ul style="list-style-type: none"> • Appropriate Tourism support infrastructure and facilities shall be provided 	<ul style="list-style-type: none"> • Formulate planning regulations and standards to guide tourist specific infrastructure and facilities. • Develop the requisite tourism support infrastructure and facilities. • Upgrade the existing tourism facilities and infrastructure. • Increase bed capacity in tourist attraction areas and towns throughout the county.
	<ul style="list-style-type: none"> • Tourist attraction areas and sites shall be conserved and protected 	<ul style="list-style-type: none"> • Identify, map and protect all tourist attraction areas in the County • Prohibit the location of incompatible land use activities in tourism areas • Strictly regulate developments within the tourist attraction sites.
	<ul style="list-style-type: none"> • Appropriate Transport infrastructure shall be provided to link the different tourist circuits, attraction areas and sites 	<ul style="list-style-type: none"> • Prepare and implement an integrated Tourism Transportation Master Plan. • Encourage application of low carbon options in transport infrastructure
	<ul style="list-style-type: none"> • Governance of the tourism sector shall be enhanced. 	<ul style="list-style-type: none"> • Prepare integrated spatial plans to guide development of the tourism sector. • Prepare and implement Policies on land use, wildlife and tourism • Enhance tourism dedicated security to the tourism sector. • Undertake awareness campaigns on the value of eco-tourism to the industry players • Develop standards for eco-tourism establishments
	<ul style="list-style-type: none"> • Spatial Development plans shall be prepared to guide implementation of 	<ul style="list-style-type: none"> • Prepare Ecosystem area plans for all parks and reserves to address problems of unplanned development of lodges and poor access roads.

	the flagship projects for the tourism sector	
4.2.6 Managing Human Settlements	<ul style="list-style-type: none"> • The expected increase in population in urban areas shall be anticipated and accommodated particularly for the main growth areas. 	<ul style="list-style-type: none"> • Increase the housing stock by planning and redeveloping existing housing areas. • Plan and designate land for new housing schemes • Upgrade the existing and provide additional infrastructure and facilities to support housing development in the urban areas • Provide efficient transportation and quality infrastructure in human settlements
	<ul style="list-style-type: none"> • Alternative urban areas shall be developed and supported to promote balanced regional development and spur growth. 	<ul style="list-style-type: none"> • Prepare local physical development plans to define the urban growth limits for urban centres. • Enforce strict regulations and justifications on development control processes. • Intensify the supply of urban infrastructure within the area contained to make it attractive for investment.
	<ul style="list-style-type: none"> • Rural growth centres shall be rationalized and supported to act as central places and settlements clustered to free the rich agricultural land 	<ul style="list-style-type: none"> • Provide basic services such as extension services, health facilities, markets, sanitation, water, power and education to improve the quality of rural life. • Undertake sensitization and awareness campaigns on the need to conserve agricultural land by discouraging land fragmentation. • Progressively link growth centres by means of secondary roads as a minimum. • Incorporate disaster management and mitigation in planning of rural settlements.
	<ul style="list-style-type: none"> • Human settlements shall be developed in line with environmental and natural resources conservation to improve living conditions 	<ul style="list-style-type: none"> • Map out and prohibit development in environmental sensitive areas. • Promote social organization and environmental awareness through the participation of local communities in the identification of public service needs.

		<ul style="list-style-type: none"> • Empower community groups, non-governmental organizations and individuals to assume responsibility and authority for managing and enhancing their environment. • Deliberately provide adequate and functional open spaces in urban places. • Prescribe planning standards for open/green space on private development. • Encourage non-motorized transport (NMT) and use of public transport • Ensure all buildings meet energy efficiency criteria
	<ul style="list-style-type: none"> • Provision of an efficient, reliable and effective transport system for human settlements 	<ul style="list-style-type: none"> • Plan and develop an integrated urban transport system to enhance provision of relevant modal split. • Establish an effective transport management system that enhances the reliability and efficiency of the transport system • Improve the road conditions and expand the linkages to human settlements • Integrate NMT with existing transport infrastructure. • Incorporate the concept of green energy in transport systems planning and redevelopment
	<ul style="list-style-type: none"> • The management and governance of Human Settlements particularly the urban areas shall be improved 	<ul style="list-style-type: none"> • Integrate technology in management of human settlements to strengthen urban data systems. • Coordinate and strengthen development control mechanisms • Provide adequate human resource and improve their capacity in management of human settlements in the sectors of; housing, settlement, land, infrastructure, construction, energy and disaster management • Conduct research into migration trends to inform effective planning and provision of human settlements.

	<ul style="list-style-type: none"> • Upgrading of the existing settlements and forestalling of new informal settlements 	<ul style="list-style-type: none"> • Prepare Local Physical Development Plans for purpose of renewal and/or redevelopment of informal settlements. • Formulate a housing policy that will focus on providing affordable and accessible housing. • Enforce development control regulations and adherence to building code and standards. • Enhance coordination of donor agencies activities within informal settlements by relevant authorities for optimal returns.
	<ul style="list-style-type: none"> • Peri-urban development shall be managed and controlled to contain urban growth within its limits and protect rural land uses 	<ul style="list-style-type: none"> • Formulate and implement planning legislation on urban containment, peri-urban planning and management. • Institute sanctions on idle land to encourage productive and sustainable land utilization. • Create green belt buffer zones to define the urban and peri-urban areas. • Incentivize local farmers to preserve agricultural land e.g. by providing ready markets for agricultural produce

<p>4.2.7 Conserving the Natural Environment</p>	<ul style="list-style-type: none"> • All environmentally sensitive areas shall be protected and utilized in a sustainable manner • All environmentally fragile areas shall be conserved and utilized in a sustainable manner • All government agencies shall integrate environmental concerns in policy formulation, resource planning and development processes • Community participation shall be mainstreamed in the protection and conservation of natural resources • National and County Physical Planning departments shall mainstream climate change into their planning processes. 	<ul style="list-style-type: none"> • Prepare and implement integrated management plans for Environmental sensitive areas • Involve and empower communities in the management of environmentally sensitive areas and promote environmental education and awareness • Adopt appropriate land use planning and watershed management practices for sustainable development • Promote sustainable waste Management and Pollution Control • Identify species which are rare and endangered with the aim of protecting them from extinction • Develop and implement harmonized regional plans for sustainable management of trans-boundary resources • Implement the National Climate Change Strategy and the National Climate Change Action plan • Strengthen Environmental Governance and harmonize sectoral policies, legislation and regulations
--	--	---

4.2.8 Integrating the National Transportation Network

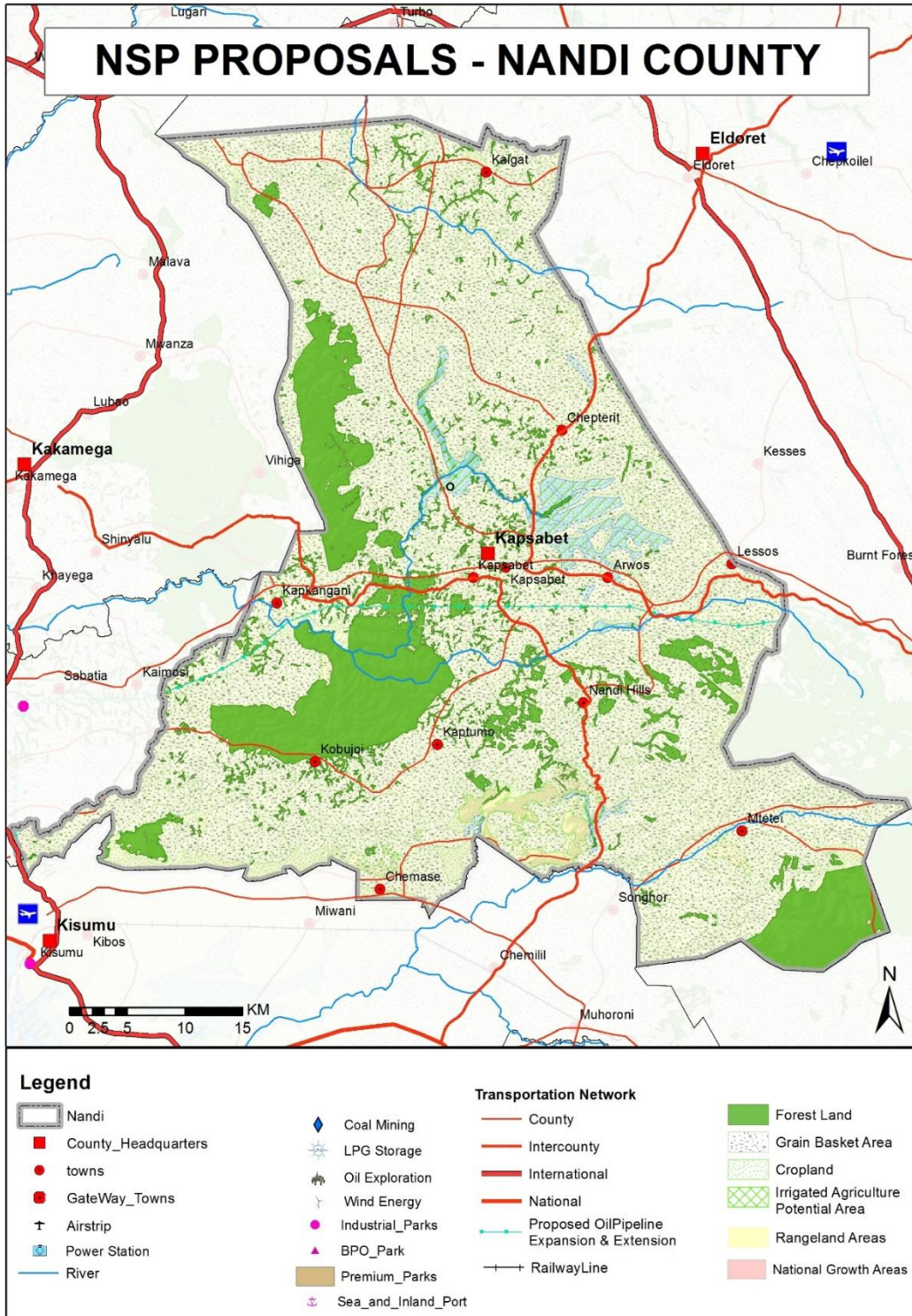
- An integrated and functional transport system for the county and urban areas shall be developed
- An urban transport policy that facilitates an integrated, balanced and environmentally sound urban transport system in which all modes efficiently play their roles shall be developed
- Environmental conservation shall be upheld in the planning, development and management of the transportation network
- An efficient and affordable Mass Public Transport for all urban areas in the country shall be developed
- Provide access and linkage, between county headquarter and sub-county headquarters and link them to national transportation corridors
- Integrate land use with urban transport planning
- Design and develop integrated transport networks that considers all different modes of transport
- Establish a comprehensive transport management information
- Develop a public transport policy to regulate planning and management of public transport
- Expand all roads connecting county headquarters to at least 60m, sub-county headquarters to at least 30m and upgrade to bitumen standard (tarmac).
- Develop roads connecting infrastructure installations of national importance and resource areas to bitumen standard
- Construct bypasses and ring roads in main urban centres to divert through traffic from the CBDs (Central Business Districts)
- Develop a main public transport termini in all major urban areas and county headquarters to cater for all the various transport modes, including NMIMTs(Non-Motorized and Intermediate Means of Transport) to enhance efficiency and connectivity between transport modes
- provide a framework for development and management of public service termini by the private sector through public private participation
- County governments to identify, designate, close and regulate roads to be used by hawkers to display their wares on chosen days and times to decongest the CBDs (Central Business District).

4.2.9 Providing Appropriate Infrastructure	<ul style="list-style-type: none"> • Safe, adequate, reliable and affordable electricity for both urban and rural settlements shall be provided. 	<ul style="list-style-type: none"> • Mainstream and encourage green energy options in the design of buildings • Support the flagship projects that are geared towards increasing electricity supply from both renewable and non-renewable sources
	<ul style="list-style-type: none"> • Expansion and improvement of water reticulation systems to facilitate the access to clean, safe, adequate, reliable and affordable water in human settlements shall be promoted 	<ul style="list-style-type: none"> • Construct and rehabilitate water supply systems • Incorporate water provision in all physical development plans • Develop a county rainwater harvesting strategy and water storage investment plans for all the villages and urban centres; and revision of building by-laws to require all new development to have rain water harvesting. • Improve water supplies in the major urban areas • Develop water supply pipeline systems and sewers, and do a comprehensive mapping of all water supplies systems
	<ul style="list-style-type: none"> • Promote a Nationally competitive, accessible and affordable education with training and research facilities 	<ul style="list-style-type: none"> • Expand access and equity, improve quality and relevance and invest in human resource • Mainstream ICT in education and training • Develop and upgrade physical infrastructure in all education institutions to increase their capacity
	<ul style="list-style-type: none"> • A network of functional, efficient, safe, accessible and sustainable health infrastructure and healthcare system shall be established. 	<ul style="list-style-type: none"> • Increase the utilization of services at lower levels of the health services and reduce self-referral to the higher levels of care • Develop the service provider's capacity to offer services and appropriately refer at each level of the healthcare system • Improve the system's ability to transfer clients and specimens between the different levels of the health care system • Improve reverse referral and feedback information systems

		<ul style="list-style-type: none"> • Improve preparedness and response to emergencies and disasters • Strengthen outreach systems for provision of health services to marginalized and vulnerable population • Provision of quality emergency health services at the point of need • Establish fully fledged low – cost diagnostic centres and provide adequate screening and treatment facilities for persons with chronic or terminal conditions.
	<ul style="list-style-type: none"> • Appropriate, quality, efficient and cost-effective ICT infrastructure in both rural and urban areas shall be promoted 	<ul style="list-style-type: none"> • Develop and upgrade existing ICT Infrastructure • Extend ICT infrastructure to cover all the rural and local growth centres
	<ul style="list-style-type: none"> • The expansion of sewerage systems and waste management facilities shall be promoted to improve sanitation in human settlements 	<ul style="list-style-type: none"> • Service all urban settlements to a centralized sewerage treatment system and solid waste disposal facilities • Apply appropriate technology solutions to sewerage treatment in rural and low-density housing areas. • All spatial plans to make provision for development of sewer systems and treatment works and solid waste disposal sites. • Adopt appropriate technology to facilitate reduction, recycle and reuse of waste (3R's). • Undertake rehabilitation of storm water drainage systems in all urban areas.
	<ul style="list-style-type: none"> • Sporting infrastructure shall be planned, developed, maintained and the existing rehabilitated to promote sports development. 	<ul style="list-style-type: none"> • Establish County Sports Talent Centers to act as feeds to the national centre to scout, nurture and develop sports talents at the sub-national levels. • Rehabilitate county stadia to international standards to enable the youth to actively develop and tap the immense talent in sports

4.2.10 Towards a Rapidly Industrializing County	<ul style="list-style-type: none"> • The cluster development strategy shall be promoted to focus on proximity to raw materials and markets of region-specific products 	<ul style="list-style-type: none"> • Put up agro-based industries (Nandi is an agro climatic zone II county) • Mineral-based industries to be located in-situ where the minerals are found • Locate cottage industries and crafts in-situ • Promote value addition in processing of local produce.
	<ul style="list-style-type: none"> • Specific sites for industrial development shall be identified, planned and serviced with the appropriate infrastructure 	<ul style="list-style-type: none"> • Plan and set aside land for industrial development • Develop SME and Industrial Parks • Integrate the industrialization with environment conservation • Provide efficient, reliable and sustainable infrastructure and services to industries • Encourage discharge of safe/ clean industrial waste
	<ul style="list-style-type: none"> • Adequate and affordable energy supply for the industrial sector shall be provided 	<ul style="list-style-type: none"> • Provide reliable energy infrastructure • Adopt renewable energy generation programmes by provision of incentives and enforcement of building laws requiring utilization of renewable energy • Incentivize and promote the adoption of energy efficient technologies to lower the demand for energy

Map 3: NSP Proposals for Nandi County



Source: State Department for Physical Planning, 2022

CHAPTER FIVE: IMPLEMENTATION AND ADOPTION OF THE GUIDELINES

5.1 Overview

The implementation framework identifies activities and further ties them with responsible actors, resources and timeframes adequate for their execution. It constitutes a deliberately established method, means or system of ensuring that the policies, strategies and measures outlined in the guidelines are continuously and consistently executed to achieve their objectives.

To effectively implement the guidelines, the various sectors, actors and levels of planning have been identified and have to work together and the mandate of the sectors at the National and County levels of planning have to be integrated.

5.2 Implementation Approaches

The County Specific Guidelines will be implemented through various approaches including:

1. Preparation of spatial plans to integrate and conform to the proposals of the County Guidelines. The plans include:
 - Inter-County Physical and Land Use Development Plans for Metropolitan regions, conservation zones, river basins, water towers, coastal ecosystems, trans-boundary resource areas and transport corridors, among others.
 - County Physical and Land Use Development Plans.
 - Local Physical and Land Use Development plans for Cities, Urban areas, special area plans, subject plans and detailed neighbourhood plans, among others.
 - Sectoral plans
2. Integration of the guideline policies, strategies and measures into the County sector plans, programs and projects. Ministries, Departments and Agencies (MDAs), County and National Departments identified in the plan to administer the policies, strategies and measures are required to translate them into action plans, programmes and projects and to include them in their subsequent sector plans.
3. Formulation of policies, regulations and standards to guide development control

5.3 Implementation Framework

The implementation of the various policies, strategies, measures, programmes and projects under these Guidelines will involve a wide range of actors. It will require a coordinated approach and partnership between the National and County Governments and non-state actors. It may require re-engineering of institutions and a number of actors to undertake the implementation through a harmonized approach.

The National Spatial Plan identified a multi-leveled framework for implementation of the plan that incorporates all levels of actors. In this regard, the institutions identified in the NSP to undertake implementation of the plan at County-level shall also be mandated to ensure implementation of this Guidelines.

The following are the Institutions mandated to ensure implementation of the County Specific guidelines;

5.3.1 County Physical Planning Committee

The role of the County Planning Committee shall be to ensure aspirations of the guidelines are articulated in preparation of the County Spatial Plans, County Integrated Development Plans and Local Physical and Land Use Development Plans.

The composition of this committee consists of;

- i. The Governor who will be the Chairperson,
- ii. the Deputy Governor,
- iii. the County Executive Committee Members from various sectors
- iv. Directors from various relevant County Departments including Lands and Physical Planning, Economic planning, Agriculture, Industrialization, Tourism, Environment, Transport and Infrastructure

The functions of the committee include;

- 1) To promote effective integration between physical, economic and sectoral planning within the framework of county development policies.
- 2) To provide policy guidance for the implementation of strategic spatial projects
- 3) To ensure that the guidelines policies and measures are mainstreamed in the various county plans.
- 4) To mobilize resource for implementation of the Guidelines.

5.3.2 County Planning Unit (CPU)

The technical Unit shall provide technical support to the various implementing County departments on issues relating to physical planning.

The CPU shall;

- i. Monitor the Implementation of the guidelines.
- ii. To disseminate components of the guidelines to the various county departments.
- iii. Update the County Physical Planning Committee on a regular basis on the implementation of the guidelines.

The County Director of Physical Planning shall be responsible for preparation of an annual state of planning report which shall among other things appraise the status of implementation of the guidelines.

5.3.3 National Land Commission

The National Land Commission shall play its oversight role in land use planning to ensure efficient implementation of the NSP and the guidelines. Other functions of the Commission in the implementation of the NSP and the guidelines include the following:

- To formulate mechanisms and parameters for monitoring and overseeing land use planning.

- i. To ensure that relevant planning authorities carry out their functions as required by law.
- ii. To make recommendations for improvements of the planning systems in the county.
- iii. To mobilize resources to support physical/land use planning.

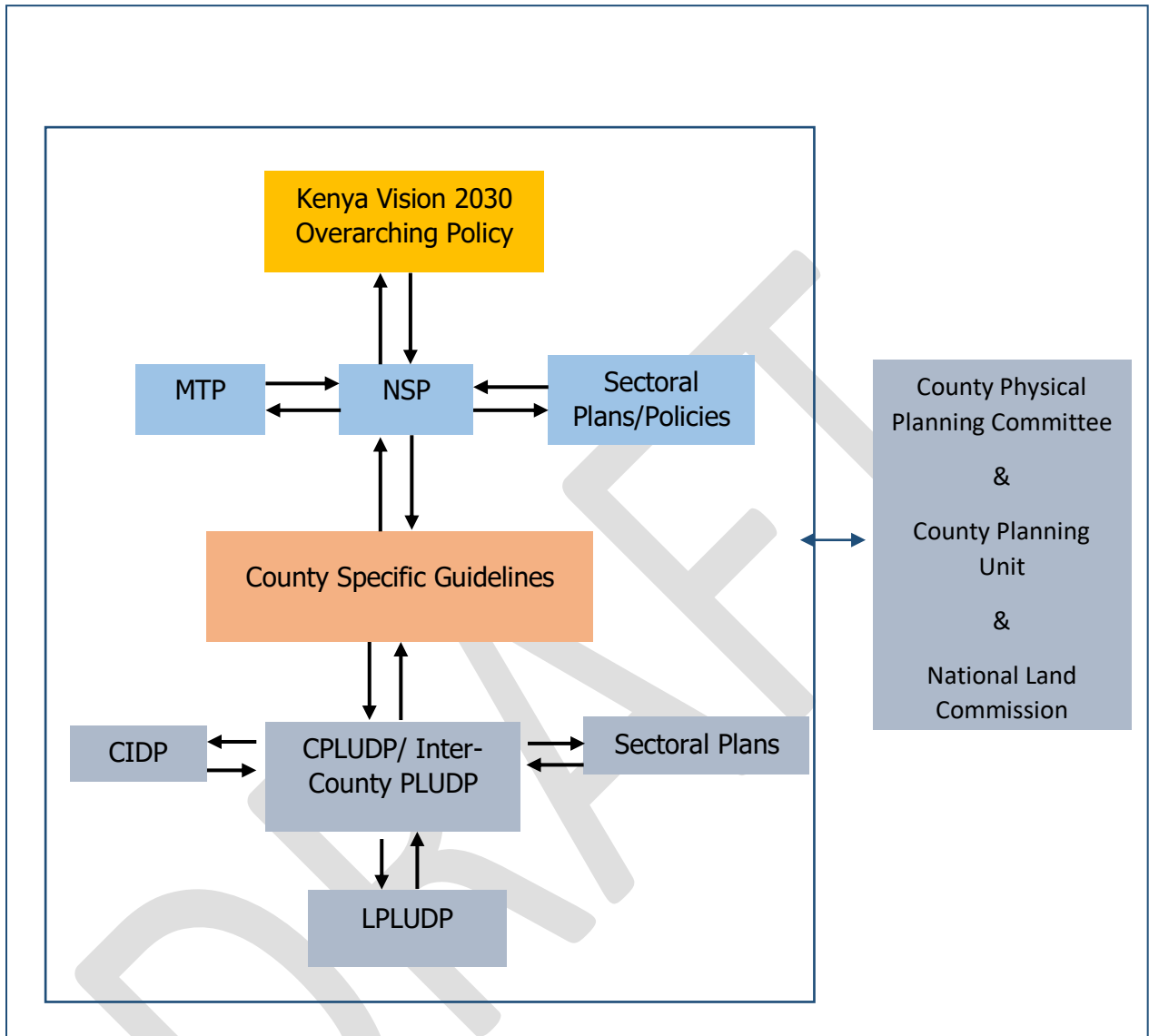
5.4 Monitoring and Evaluation

Implementation of the guidelines will be monitored and evaluated to measure both outputs and outcomes and ensure that the intended actions are implemented in a timely manner. To facilitate attainment of the objectives of the guidelines, performance indicators will be developed by the County Physical Planning Department for efficient monitoring. Periodic reports will be prepared in relation to progress being made in their implementation.

The graphic below illustrates the implementation structure for County Specific guidelines.

DRAFT

FIGURE 4: IMPLEMENTATION STRUCTURE OF THE GUIDELINES



Source: State Department for Physical Planning

Conclusion

The application of these guidelines will be undertaken by a number of actors and hence the need for a coordinated approach. The lead agency will be Nandi County Government which will be responsible for implementing various county specific initiatives proposed by the guidelines.

The National Government, County Government of Nandi, the private sector and the general public will be critical in actualizing the objectives of these guidelines. The County Physical Planning Committee shall develop a communication strategy to enhance the synergies.

The National Department of Physical Planning shall undertake sensitization, training and capacity building of the County Government and National Government institutions and agencies that will be involved in the implementation of these guidelines. Special attention will be given to the County physical planning units, as they will be expected to provide technical expertise in the implementation of the County specific policies and strategies.

