



NATIONAL SPATIAL PLAN IMPLEMENTATION GUIDELINES FOR NYANDARUA COUNTY

**Optimal productivity, sustainability, efficiency and equity in use of
our land and territorial space**



JUNE 2022

MINISTRY OF LANDS AND PHYSICAL PLANNING

STATE DEPARTMENT FOR PHYSICAL PLANNING

FOREWORD

The Constitution of Kenya apportions responsibility of planning to both National and County Governments. Under the Fourth Schedule on distribution of functions, Part 1 (21) and (32) mandates the National Government with the responsibility of formulating general principles of land planning, co-ordination of planning by the Counties, capacity building and technical assistance to the Counties. On the other hand, Part 2(8) allocates the function of County planning and development to County Governments. It is under these provisions that the County specific guidelines have been prepared.

The Department of Physical Planning prepared the National Spatial Plan (NSP) in response to the Kenya Vision 2030 to guide the spatial development of the country over a period of 30 years beginning in 2015.

It aims at achieving an organized, integrated, sustainable and balanced development of the country by providing a framework for better national organization and linkages between different activities within the national space.

To implement the Plan, the Counties are expected to play a key role by mainstreaming strategies, policies, and measures identified in the NSP into the County spatial planning systems.

The guidelines have identified planning policies, strategies, and measures that Plans at the County level are expected to mainstream and propagate. The policies address among others, the protection of rich agricultural land, development imbalances, conservation of environmentally sensitive areas, urban containment, and promotion of industrial development.

The guidelines provide direction on the existing potentials, the opportunities, the constraints/challenges inhibiting harnessing of the potentials, the strategies to apply, respective policies required, and the necessary measures to achieve optimal productivity, sustainability, efficiency and equity in the use of county land resources.

The guidelines are an opportunity on how best to refocus, vary and complement areas that require different approaches responding to country-specific needs and promote the livelihoods of their people, while contributing to the national aspirations of vision 2030, regional objectives of the Africa Agenda 2063, and international targets of sustainable development. The refocusing will also be handy in reviewing and making decisions on NSP which is due for review in 2025.

These guidelines are therefore a tool for enhancing this critical path and provide a direction for development planning by the Counties as they discharge their responsibility of preparing county and local physical and land use development plans. The guidelines will also ensure that the County Integrated Development Plans conform to the proposed County specific policy guidelines and measures.

DRAFT

PREFACE

The National Spatial Plan(NSP) recognizes that Kenya is greatly endowed with massive and diverse resources distributed over the national space that require an integrated and coordinated approach for optimal productivity and sustainability.

The County Specific Guidelines have been derived from the National Spatial Plan and provide a planning framework for the integration of the NSP into the county spatial planning system. They are clear statements linking the National Spatial Plan to Inter-County, County and lower-level Physical and Land Use Development Plans and provide clarification on the anticipated sustainable development outcomes of implementing the Plan.

The County Government will adopt, develop and implement their plans based on the policies, strategies, and measures articulated in the guidelines. The realized county plans are expected to guide, harmonize and facilitate development within the county, hence contributing to the overall implementation of the NSP.

The guidelines also form an efficient compass and monitoring tool for National and County Governments to jointly pursue sustainable planning and appropriate implementation mechanisms.

For the county to be nationally competitive, there is need to balance development and promote optimal utilization of land and land-based resources as well as cultivate an integrated approach in addressing the intertwined challenges of regional imbalances/inequalities, rural development, underutilization of the available resources, uncontrolled urbanization, environmental degradation and inefficient transportation. It is imperative therefore, to prioritize the implementation of this strategic document so as to promote balanced development and competitiveness across the county

EXECUTIVE SUMMARY

The County Specific Guidelines seek to facilitate the implementation of the National Spatial Plan by outlining policies, strategies and measures to guide County spatial planning and development and promote optimal productivity, sustainability, efficiency and equity in the use of land. They provide a framework for preparation of lower level Plans including Inter-County, County and Local Physical and Land Use Development Plans.

The disconnect between National and County Spatial Planning and development has resulted in uncoordinated and unbalanced development, therefore creating a need for a clear structure that links National, Regional and Local planning and development. This is achievable through integration of the policies, strategies and measures proposed by the guidelines into County Spatial Plans, Programs and Projects, to tackle challenges of unbalanced regional development, urbanization, national competitiveness and unsustainable use of land and natural resources.

The County Specific Guidelines are organized into five chapters detailing various facets. Chapter one provides an overview, purpose and justification of preparation of the guidelines. It also outlines the objectives that the guidelines intend to achieve and details the preparation process as well as intended users. This chapter highlights the key principles that form the basis for preparation of lower level plans including public participation, liveability, sustainable development, urban containment, smart urban growth among others.

Chapter two details the legal and policy provisions that the guidelines are anchored upon. They include, among others, The Constitution of Kenya, 2010, The Physical and Land Use Planning Act No.13 of 2019, County Government Act, 2012, Environmental Management and Coordination (Amendment) Act, 2015, Sessional Paper No. 01 of 2017 on National Land Use Policy and Sessional Paper No. 10 of 2012 on Kenya Vision 2030.

The third chapter analyses the county profile, detailing its location, size, bio-physical characteristics, socioeconomic status and the County's comparative advantage in

relation to others. The locational context provides information on the geographical position and bordering Counties while the biophysical context discusses the topography, hydrology and climate. The socioeconomic status indicates key economic drivers of the County and its population and demographic structure.

Chapter four presents the County specific issues and proposes development strategies to promote national competitiveness, optimal use of land and resources, rural development, balanced intra-county development and urbanization. Additionally, it provides policy guidelines and measures for County advancement.

The final chapter five focuses on implementation and adoption of the guidelines. The implementation framework identifies institutions, County development programs and projects, and further ties them with responsible actors, resources and timeframes for effective execution. It proposes a framework for ensuring that the outlined policies, strategies and measures are adequately implemented.

DRAFT

Table Of Contents

| | |
|------------------------------------------------------------------------------------|------|
| FOREWORD | ii |
| PREFACE | iv |
| EXECUTIVE SUMMARY | v |
| Table Of Contents | vii |
| List of Maps | viii |
| List of Tables | viii |
| List of Figures | ix |
| CHAPTER 1: INTRODUCTION | 1 |
| 1.1 Background | 1 |
| 1.2 Purpose | 1 |
| 1.3 Objectives | 2 |
| 1.4 Scope | 2 |
| 1.5 Justification | 3 |
| 1.6 Application of the Guidelines | 4 |
| 1.7 Process of preparing the Guidelines | 4 |
| 1.8 Targeted users | 5 |
| 1.9 Key Principles | 7 |
| CHAPTER 2: LEGAL, POLICY AND PLANNING CONTEXT | 8 |
| 2.1 The Constitutional Framework | 8 |
| 2.2 Policy Framework | 8 |
| 2.2.1 Sessional paper No 10 of 2012 on Kenya Vision 2030 | 8 |
| 2.2.2 Sessional paper No 1 of 2017 on National Land Use Policy | 9 |
| 2.3 | 9 |
| Legal context | 9 |
| 2.3.1 The Physical and Land Use Planning Act No. 13 of 2019 | 9 |
| 2.3.2 County Governments Act, 2012 | 10 |
| 2.3.3 The Urban Areas and Cities (Amendment) Act, 2019 | 10 |
| 2.3.4 Environmental Management and Coordination (Amendment) Act, 2015 | 10 |
| 2.3.5 National Land Commission Act, 2012 | 10 |
| 2.4 Planning Context | 10 |
| 2.4.1 National Spatial Plan (NSP) | 10 |

| | |
|----------------------------------------------------------------------------------------------|----|
| 2.4.2 NSP linkage to other plans | 11 |
| CHAPTER 3: COUNTY PROFILE | 13 |
| 3.1 Location context | 13 |
| 3.2 Bio-physical Characteristics..... | 15 |
| 3.3 Socio-Economic Status | 16 |
| 3.3.1 Population and Demography | 16 |
| 3.3.2 Economy | 17 |
| 3.3.3 Physical Infrastructure | 17 |
| 3.3.4 Public Utilities | 17 |
| 3.4 Comparative Advantage..... | 19 |
| CHAPTER 4: COUNTY SPECIFIC ISSUES, DEVELOPMENT STRATEGIES AND POLICY GUIDELINES | 20 |
| 4.1 County Specific Issues and Strategies..... | 20 |
| 4.2 Policies Guidelines and Measures..... | 35 |
| CHAPTER 5: IMPLEMENTATION AND ADOPTION OF THE GUIDELINES | 46 |
| 5.1 Overview | 46 |
| 5.2 Implementation Approaches..... | 46 |
| 5.3 Implementation Framework..... | 47 |
| 5.3.1 County Physical Planning Committee..... | 47 |
| 5.3.2 County Planning Unit (CPU)..... | 48 |
| 5.3.3 National Land Commission | 48 |
| 5.4 Monitoring and Evaluation | 49 |
| 5.5 Conclusion | 51 |

List of Maps

| | |
|-----------------------------------------------------|----|
| Map 1: Location of Nyandarua County | 14 |
| Map 2: Existing situation of Nyandarua County | 18 |
| Map 3: NSP Proposals for Nyandarua County..... | 45 |

List of Tables

| | |
|------------------------------------------------|-------------------------------------|
| Table 1: Targeted users of the guidelines..... | Error! Bookmark not defined. |
| Table 2:Population projection up to 2045 | 16 |

Table 3:specific issues and strategies.....21
Table 4:Policy Guidelines and measures36

List of Figures

Figure 1:Facets as captured in the NSP **Error! Bookmark not defined.**
Figure 2: Policy focus of the NSP **Error! Bookmark not defined.**
Figure 3: Planning linkages with other plans..... **Error! Bookmark not defined.**
Figure 4: NSP Implementation Organization Structure50

DRAFT

CHAPTER 1: INTRODUCTION

1.1 Background

The County Guidelines set out policies, strategies and measures that will guide the long-term spatial development of the county for a period of 30 years. They cover the entire county and defines the general trend and direction of its spatial development.

The guidelines have been developed in line with the four thematic areas as outlined in the NSP. They provide a guide to the Planning Authority at the county on how to incorporate the NSP policies, strategies and measures during the preparation of County Spatial Plans and other lower level plans like the Local Physical and Land Use Development Plans consequently implementing the NSP.

The NSP County Specific implementation guidelines summarize the County's existing potentials and opportunities, the constraints (challenges) inhibiting harnessing of the potentials, the applicable strategies and respective policies required, and the necessary measures to achieve optimal productivity, sustainability, efficiency and equity in the use of the county land resources. They act as a reference point

1.2 Purpose

The purpose of the County Specific Guidelines is to provide a planning framework for mainstreaming of the National Spatial Plan to the County spatial planning system.

The guidelines are intended to assist the County enhance the implementation of the NSP by linking the proposed county specific policies, strategies and measures into the County plans, programs and projects while putting measures in place for achieving them. The guidelines inform preparation of various County Physical Plans such as the County Physical and Land Use Development Plans.

For optimal implementation of these plans, a County Integrated Development Plan (CIDP) is essential since it is a sectoral and budgetary based plan that draws its implementation programs and projects from the County Physical Plans.

1.3 Objectives

The guidelines provide policies, strategies and measures to deal with challenges of regional imbalances/inequalities, rural development, underutilization of the available resources, urbanization, environmental degradation and inefficient transportation.

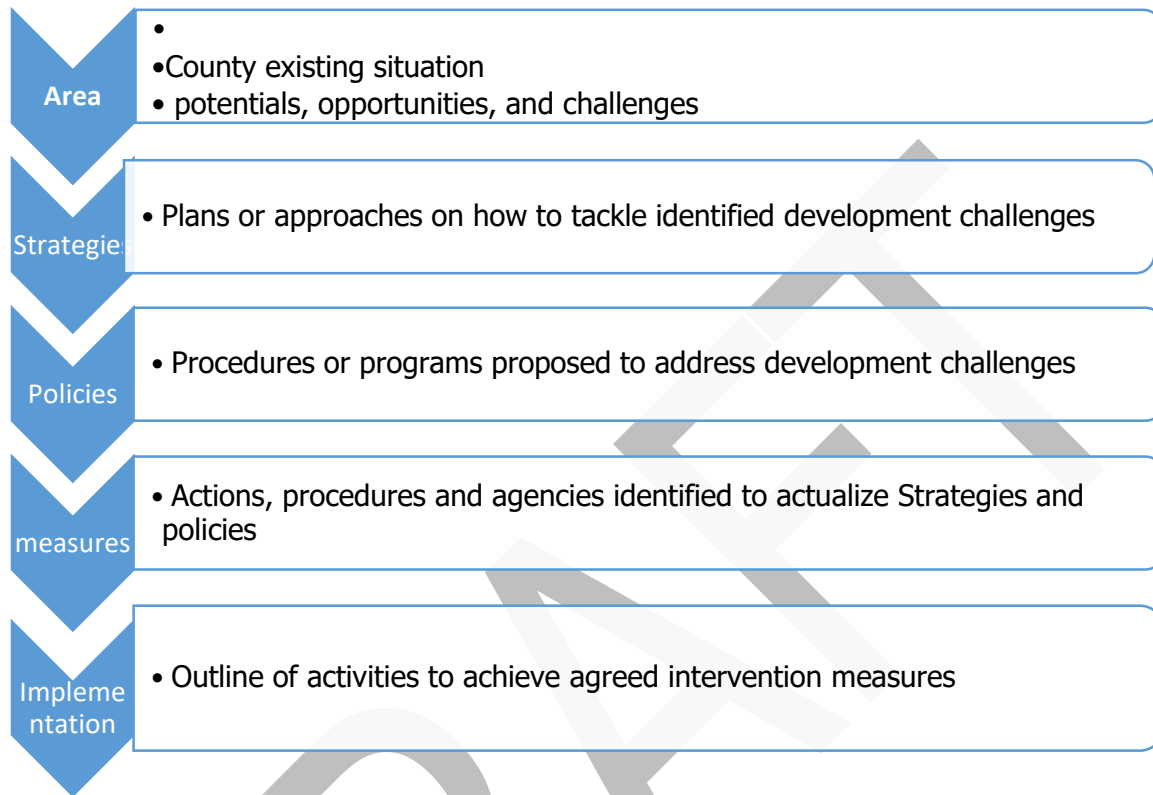
Specifically, the objectives are;

1. To sensitize the County on the provisions of the NSP
2. To promote synergy between National and County planning
3. To guide the County, implement the NSP
4. To identify the roles of the different actors in the implementation of the NSP.

1.4 Scope

The guidelines comprise policies, strategies and measures specific to Nyandarua County covering approximately 2037 km². The guidelines highlight the County's existing potentials and opportunities, the constraints (challenges) inhibiting harnessing of the potentials, the applicable strategies and respective policies required, and the necessary measures, actions, approaches, plans and procedures prescribed to achieve optimal productivity, sustainability, efficiency and equity in the use of the county's land resources and an outline of activities to execute agreed interventions as captured in the National Spatial Plan, as indicated in Figure 1 below. These guidelines are effective up to the year 2045.

Figure 1: The Scope of the Guidelines



Source: State Department for Physical Planning, 2022

1.5 Justification

Since the approval and launch of the NSP, its implementation has been undertaken in an uncoordinated manner hence the guidelines will provide a standardized approach for all Counties. The guidelines are also an important tool for tracking and evaluating implementation of the NSP both at National and County levels.

The preparation of County Spatial Plans and other lower-level plans which is a mandate of Counties has been slow and, in some Counties, has not begun at all. These guidelines are therefore a quick reference in preparation of county plans and for some Counties to help optimize land in the absence of these plans.

1.6 Application of the Guidelines

The guidelines will be used or applied in the following ways to achieve a more sustained and coordinated development of the County;

- To effectively coordinate planning between the National and the County Government;
- To improve the County Government's capacity to formulate, coordinate and implement integrated development policies, strategies, measures, programs and projects to address spatially unbalanced development;
- To inform strategic infrastructure policy and public investment decisions which support the achievement of balanced development in the County;
- To strengthen County inter-sectoral coordination within a spatial framework and provide the private sector with a clear context in which they can make investment decisions;
- To optimize the use of land and natural resources by providing a framework for making sustainable locational choices for sustainable development and conservation of land productivity in the County.

1.7 Process of preparing the Guidelines

1. The process involved reviewing the National Spatial Plan and identifying key issues, spatial policies, development strategies and measures specific to Nyandarua County. These key issues, spatial policies, development strategies and measures will be realized through preparation of County and other lower-level plans.
2. Research was undertaken on various thematic areas to enrich the County specific issues and development strategies as well as policy guidelines and measures/ interventions. Further, preparation of the guidelines considered the constitutional,

policy and legal provisions on physical and land use planning. Expert opinion was sought on the identified issues, policies, measures and strategies for implementation viability.

3. The preparation of the guidelines was identified as one of the implementation tools of the NSP, in which key NSP issues, policies, strategies and measures were translated into specific action plans, programs and projects at the County level.
4. .

1.8 Targeted users

These Guidelines have diverse consumers and application depending on prevailing circumstances and actors as demonstrated in Table 1 below:

Table 1: Targeted Users of the Guidelines

| User | Application |
|-------------------------------------------------------------------------------|-----------------------------------------------------------------------------------------------------------------------------------------------------------------------------------------------------------------------------------------------------------------------------------------------------------------------------------------------------------------------------------------------------------------------------------------------------------------------------------------------------------------|
| County Executive Committee Member in charge of Physical and Land Use Planning | <ul style="list-style-type: none"> • Preparation of county and lower-level plans • Linkage of planning structures • Quality control of the various county plans • Formulate county planning policies and strategies • Establish county specific planning institutions • Coordinate and implement county plans and policies |
| The County Director of Physical and Land Use planning | <ul style="list-style-type: none"> • Advising the county government on the impact of the county specific guidelines to the county • Preparation of County physical and land use development plans and other lower level plans • Formulating County physical and land use planning policies, guidelines, strategies, and standards; • Issuance of development permission and other development control instruments under The Physical and Land Use Planning Act, 2013. |

| | |
|-----------------------------------------------------------------------------------|-------------------------------------------------------------------------------------------------------------------------------------------------------------------------------------------------------------------------------------------------------------------------------------------------------------------|
| <p>Licensed physical and land use planners both in public and private sectors</p> | <ul style="list-style-type: none"> • Prepare, coordinate and implement spatial plans • Quality control of plans and consultancy services • Formulate policies, strategies and development guidelines • Dispute resolution |
| <p>County assembly</p> | <ul style="list-style-type: none"> • Approval of strategic sectoral budgets such as planning • Vetting of various County specific plans • Formulation and passing of County planning legislation • Enhance capacity to oversee the executive on spatial planning |
| <p>Ministries, Departments and Agencies</p> | <ul style="list-style-type: none"> • Mainstreaming relevant NSP policies, programs and projects • Allocation of resources to priority areas, • Strengthening linkages with spatial planning in resource management |
| <p>The National Land Commission (NLC)</p> | <ul style="list-style-type: none"> • Oversight role in land use planning to ensure efficient implementation of the NSP • Ensure relevant planning authorities carry out their functions as required by the law |
| <p>Practitioners in the built environment</p> | <ul style="list-style-type: none"> • Advance NSP relevant policies, programs and projects hence optimization of land resource • Appreciate sectoral Linkages to spatial planning • Facilitate incorporation of the policies, strategies and measures into, County specific plans |
| <p>Community, developers and investors</p> | <ul style="list-style-type: none"> • Comprehend the County priority sectors and County Plans and policies |

| | |
|-----------------------|--------------------------------------------------------------------------------------------------------------------------------------------------------------------------------------------------------------------------------|
| | <ul style="list-style-type: none"> • Complement County spatial planning and implementation measures • Making informed investment decisions |
| Development partners | <ul style="list-style-type: none"> • Reference frame for selecting and funding spatial planning activities • Understand planning linkages and implementation • Informed development decisions |
| Training institutions | <ul style="list-style-type: none"> • Compliment the curriculum for training of spatial planners • Understand the planning procedures and processes |

1.9 Key Principles

The principles, as applied in the NSP, should guide and form the basis upon which the lower-level physical and land use plans are prepared. Further the principles should ensure sustainable, coordinated, and realistic development. They include the following:

- 1. Effective Public participation/engagement:** All plans shall be prepared in a participatory and consultative manner with relevant stakeholders and sectoral actors.
- 2. Urban containment/Compact cities:** Local plans shall strive to limit and control urban growth within the set urban boundaries to protect rich agricultural land, mitigate urban sprawl and reduce cost of infrastructural provision.
- 3. Livability:** The planning of urban areas shall enhance the livability index in the area of housing, environment, transportation, health, and social engagement. The urban areas must be economically viable, socially inclusive and ecologically sustainable.
- 4. Smart and green urban growth:** Plans shall promote sustainable use of energy, creation of green spaces, reduce the need for car travel, and promote use of local materials, support businesses, protection of heritage and creation of unique character.
- 5. Sustainable development:** Balancing social, economic and environmental dimensions of development and catering for current and future generations.

6. Promotion of ecological integrity: Plans shall promote the protection and conservation of environmentally sensitive areas.

7. Promote public transportation: Favor public transportation over private transport to ensure efficiency and functionality of urban places.

8. Balanced development: Plans to ensure there/ is balanced development in the County to cure inequalities.

CHAPTER 2: LEGAL, POLICY AND PLANNING CONTEXT

2.1 The Constitutional Framework

The formulation of these guidelines took into account the Constitution of Kenya 2010 aspirations and Principles. Article 66 of the Constitution of Kenya 2010 gives the State powers to regulate use of any land and property in the interest of land use planning among others. The guidelines are therefore within and in response to the aspirations, values and principles as provided for in the constitution.

2.2 Policy Framework

2.2.1 Sessional paper No 10 of 2012 on Kenya Vision 2030

Kenya Vision 2030 is the overarching national development framework which all plans should be aligned to. The preparation of all spatial plans should take cognizance of the aspirations, foundations and development concepts of the vision. The preparation of the first National Spatial Plan is identified in Kenya Vision 2030 as a flagship project and is regarded as one of the foundations for socio-economic transformation. Hence the need for linkage between national planning and county planning which will be achieved through mainstreaming NSP requirements into CSPs and other lower-level plans by preparing NSP county specific guidelines to implement the NSP at lower levels

2.2.2 Sessional paper No 1 of 2017 on National Land Use Policy

The policy was formulated to address the various challenges related to land use and ensure efficient, productive and sustainable use of land. The main goal of the policy is to provide legal, administrative, institutional and technological framework for optimal utilization and productivity of land related resources in a sustainable and desirable manner at national, County and community levels.

The policy recommends the preparation of a National Spatial Plan to provide an integrated framework for the development of the country including guidelines for sustainable rural and urban planning management. The policy also provides for the preparation of planning guidelines, policies and standards to be observed by County Governments and other sectoral agencies within the frameworks of approved physical and land use development plans. These guidelines have been prepared on this basis and they are to be observed by counties in the implementation of the National Spatial Plan.

2.3 Legal context

Various Acts of Parliament are in place to provide the legal framework for the implementation of the mandate provided for in Article 66 of the Constitution. The Physical and Land Use Planning Act, 2019, The Urban Areas and Cities (Amendment) Act, 2019, County Governments Act No. 17 of 2012, The Land Act No. 6 of 2012, National Land Commission Act No. 5 of 2012 among others. The NSP County specific guidelines are prepared in this context and meet this criterion.

2.3.1 [The Physical and Land Use Planning Act No. 13 of 2019](#)

This is the overarching statute that provides for formulation of both National and County physical and land use planning policies, guidelines and standards. The Act further provides for administration, types, content, process and approval of the various types of Physical and Land Use Development Plans.

2.3.2 County Governments Act, 2012

This statute mandates County Governments to carry out the planning function at the county level. The guidelines support preparation of the various county level plans that meet the recommended quality and standards.

2.3.3 The Urban Areas and Cities (Amendment) Act, 2019

The statute provides for classification of urban areas and cities, their governance and management, and for integrated development planning. The guidelines are a basis for preparation of these lower-level plans.

2.3.4 Environmental Management and Coordination (Amendment) Act, 2015

The Act provides for the establishment of an appropriate legal and institutional framework for the management of the environment as well as guidelines relating to environmental management and prevention or abatement of environmental degradation. The guidelines take cognizance of this Act and will be implemented within the framework

2.3.5 National Land Commission Act, 2012

The Act mandates the National Land Commission with the management and administration of public land on behalf of the National and County Governments and to monitor and oversight physical and lands use planning in the country. The guidelines fall within the ambit of this statute and will facilitate their oversight responsibilities.

2.4 Planning Context

2.4.1 National Spatial Plan (NSP)

The National Spatial Plan (NSP) covers the whole country encompassing the exclusive economic zone. The NSP outlines policies and strategies geared towards influencing desired future distribution and organization of human activity outlined in Vision 2030 and sectoral policies and plans. It aims at achieving economic efficiency and balanced development. The various County Spatial Plans should be aligned to the policies outlined in the NSP as demonstrated in Figure 2 below.

Figure 2: Policy Focus of the NSP



Source: National Spatial Plan, 2015-2045

To actualize the NSP, a comprehensive implementation strategy has been proposed that embraces a multiplicity of actors including National Government Ministries, Departments and Agencies, County Governments and the National Land Commission. The strategy proposes the establishment of the following institutions as key in the implementation of the Plan; The National Physical Planning Council, the National Technical Committee and the County Physical Planning Committee.

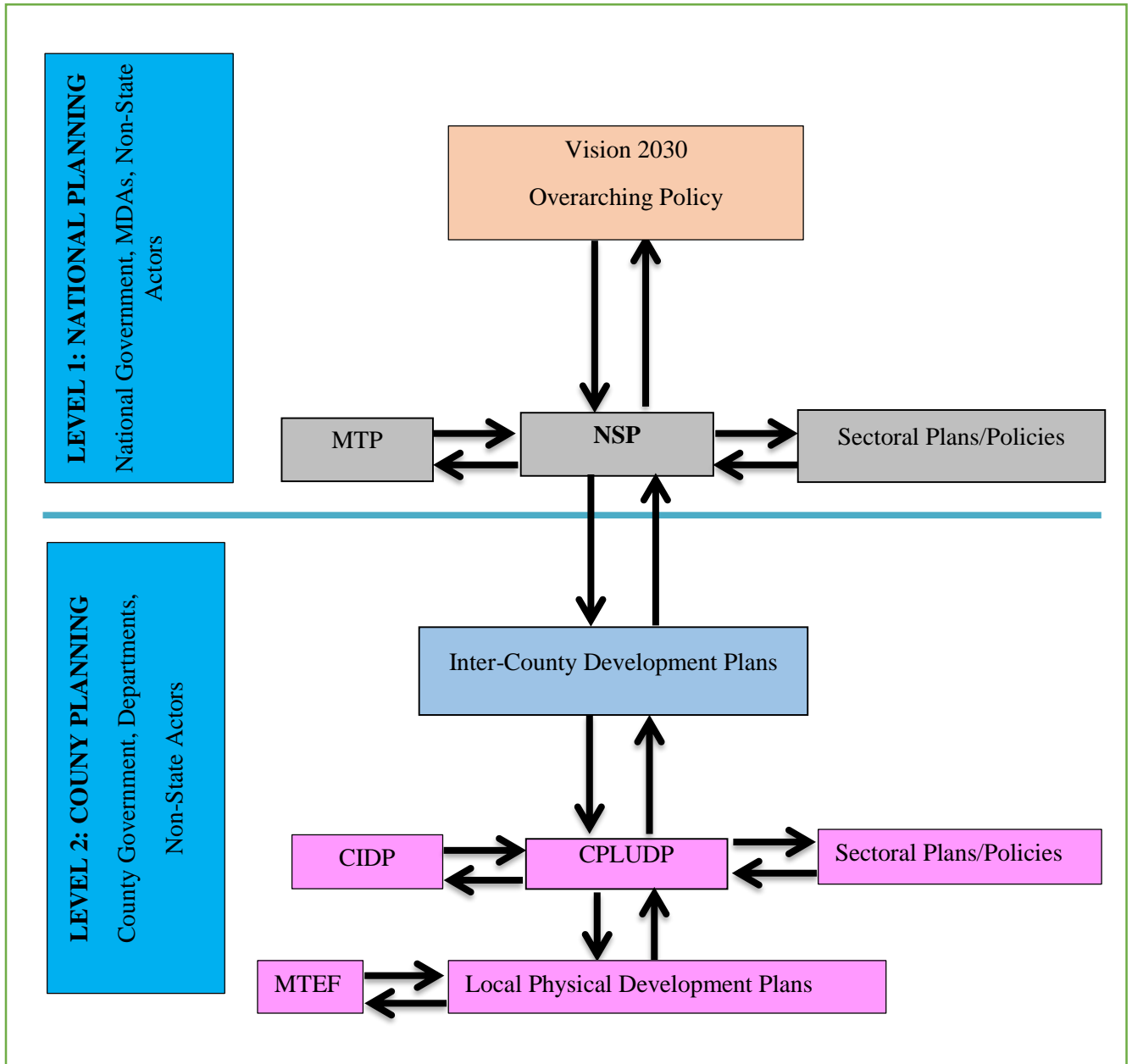
2.4.2 NSP linkage to other plans

The linkage of the National Spatial Plan (NSP) to county and other lower-level plans is key to realization of its aspirations and the successful actualization of these plans. The NSP provides a spatial framework to ground the Vision 2030 flagships projects and form a basis for coordination of County policies, strategies, measures and plans.

Inter County and County plans take into considerations the policies, measures and strategies of the NSP and implements them actualizing its aspirations.

County Physical and Land Use Development Plans provide a framework where the CIDP draws its programs and projects. The implementation of the CIDP in turn leads to realization of the objectives of the County Physical and Land Use Development Plan.

Figure 3: NSP Linkage to other Plans



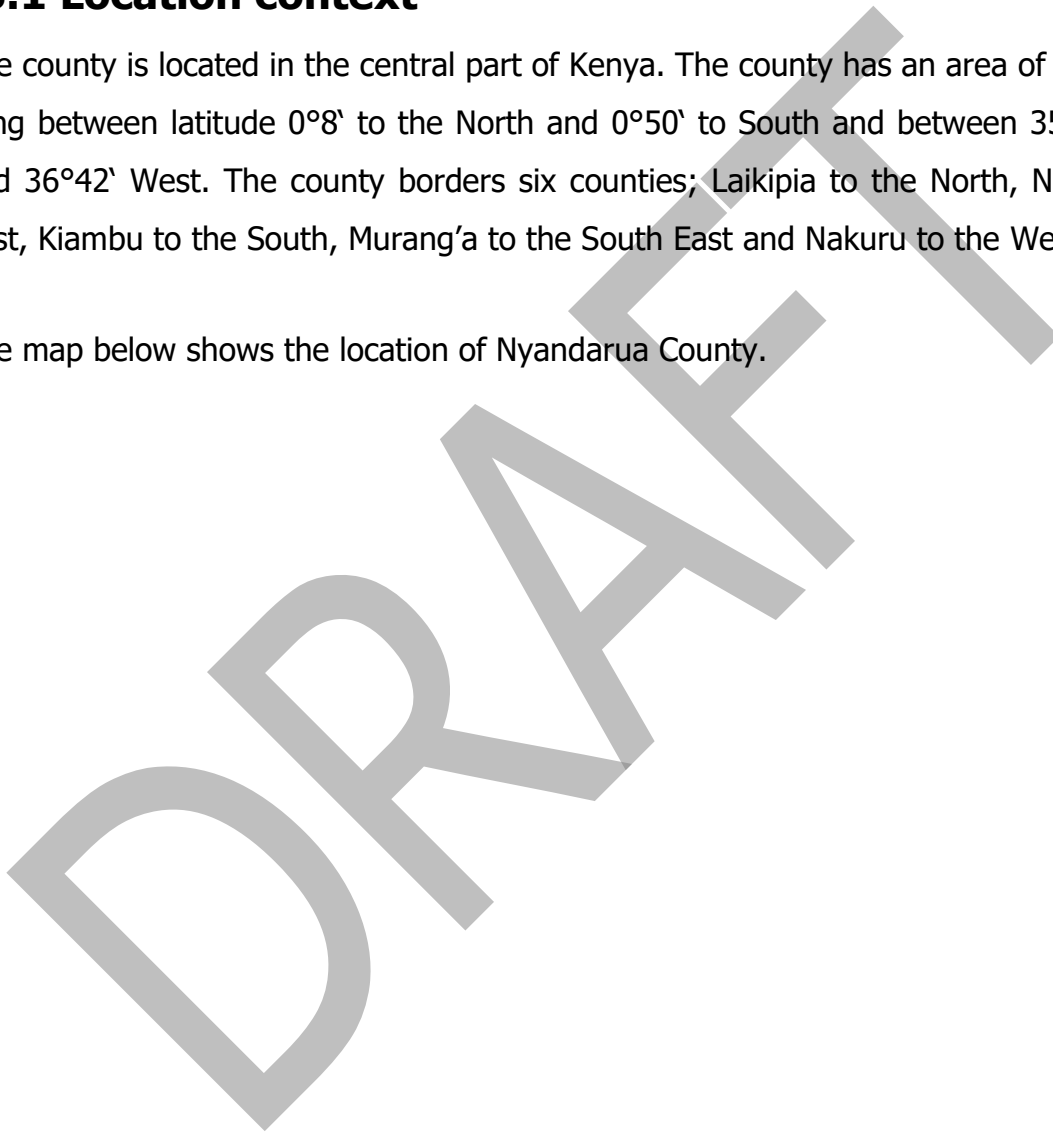
Source: The National Spatial Plan, 2015-2045

CHAPTER 3: COUNTY PROFILE

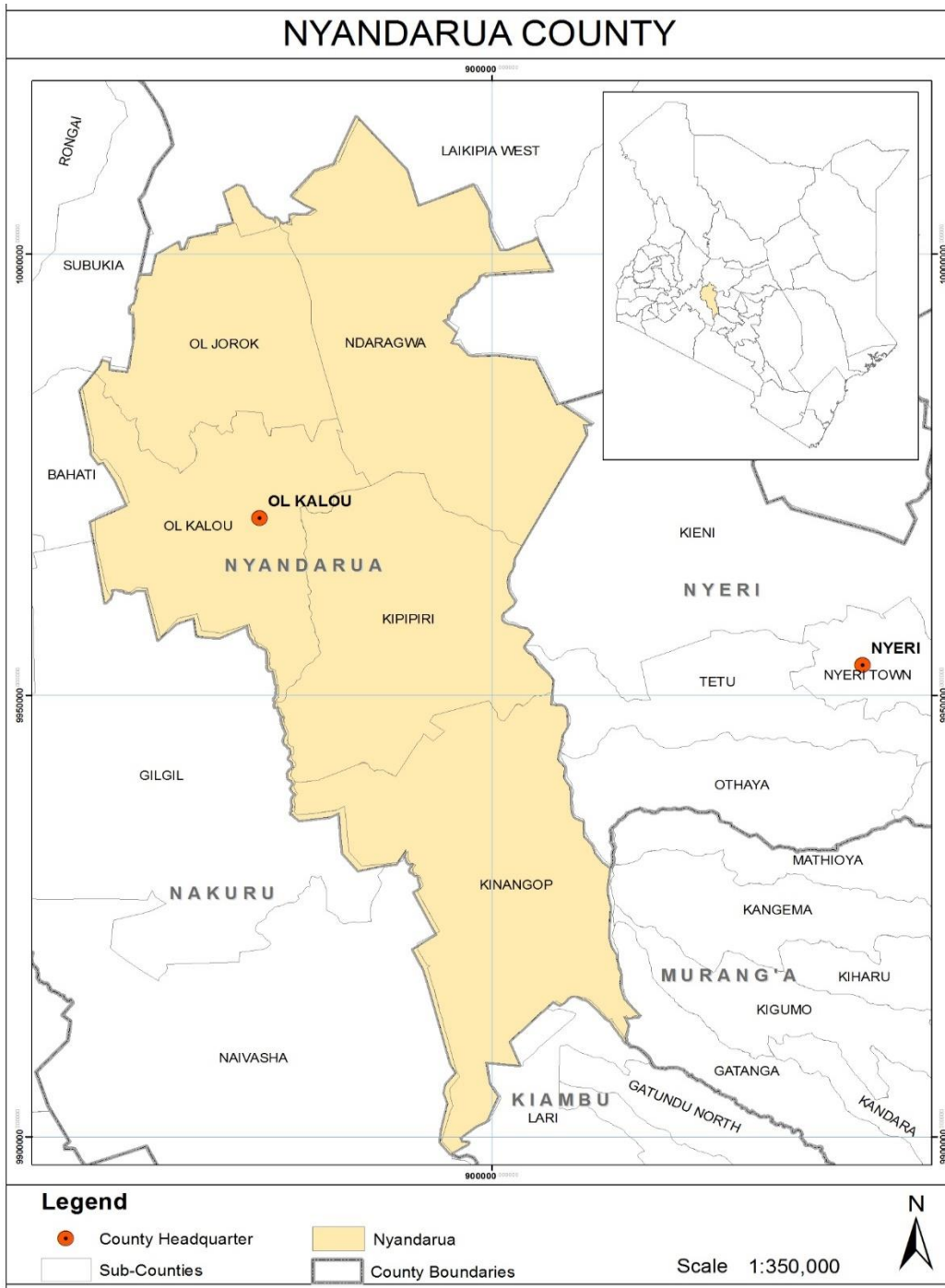
3.1 Location context

The county is located in the central part of Kenya. The county has an area of 3245.2km² lying between latitude 0°8' to the North and 0°50' to South and between 35° 13' East and 36°42' West. The county borders six counties; Laikipia to the North, Nyeri to the East, Kiambu to the South, Murang'a to the South East and Nakuru to the West.

The map below shows the location of Nyandarua County.



Map 1: Location of Nyandarua County



Source: State Department for physical planning, 2022

3.2 Bio-physical Characteristics

Topography- the county is characterized by plateaus with slopes that are interrupted by low undulating hills. The highest point of the Aberdare ranges is 3999m above sea level.

Water sources: The main permanent rivers in Nyandarua County include: Malewa, Ewaso Narok, Pesi, Turasha, Chania, Kiburu, Mkungi and Kitiri. The county also has one main lake: Lake Ol'bollosat which is the largest water mass in the county is fed by streams and underground water. There are two main types of rocks in the county: igneous rocks and alluvial rocks.

The main soil type is loam soil, however, there are huge deposits of sand soil along the riverbeds. The County experiences two rainy seasons which is between 700-1600 mm per annum.

Temperature: The County experiences moderate to low temperatures with a mean average of 25⁰ C and the lowest at 12⁰C. Some areas in the county are in the highland savannah zone characterized by scattered trees with expansive grass cover.

Land and land Use Patterns

Land is the most important resource from which the county generates goods and services for the people. The county economy is primarily agro-based where 90% of the population derive its livelihood directly from land. Land is classified into various agro-climatic zones which determine the suitability of an area for a particular land use. Nyandarua County is classified as a high potential zone. Presently, existing land uses can largely be classified into the following categories:

- i. Agricultural
- ii. Built up areas
- iii. Conservation

The spread of these land uses is uneven across the county due to variations in climatic elements such as temperature, rainfall, humidity, slope, and other physical features.

Nevertheless, changes in land use patterns have been observed in parts of the county. The main reasons for changes in land use patterns include:

- i. Increasing population
- ii. Rising demand for food and other cash crops
- iii. Increasing urbanization
- iv. Rising standards of living

3.3 Socio-Economic Status

3.3.1 Population and Demography

The population of Nyandarua County was estimated as 638,289 (0.49% women and 0.51% men) – KNBS 2019. It has a population density of 194.3 persons per square kilometer and has similar features as that of the national population but different demographic indicators. The county's population distribution and settlement patterns are influenced by infrastructure networks like roads, water and electricity. The table below shows the population projection up to 2045 for both males and females.

Table 2: Population projection up to 2045

| Year | 2019 | 2020 | | 2025 | | 2030 | | 2035 | | 2040 | | 2045 | |
|-----------------|---------|---------|--------|---------|--------|---------|--------|---------|--------|---------|--------|-----------|--------|
| Population size | 638,289 | 651,035 | | 718,796 | | 793,609 | | 876,209 | | 967,406 | | 1,068,095 | |
| | | M | F | M | F | M | F | M | F | M | F | M | F |
| | | 321312 | 329702 | 354755 | 364018 | 391678 | 401905 | 432445 | 443736 | 477454 | 489921 | 527149 | 540912 |
| households | 179,686 | 186010 | | 205370 | | 226745 | | 250345 | | 276402 | | 305170 | |
| Area | 3,285.7 | | | | | | | | | | | | |
| Density | 194 | 198 | | 219 | | 241 | | 267 | | 294 | | 325 | |

Source: State Department for physical planning, 2022

3.3.2 Economy

The main driver of the economy in Nyandarua County is agriculture (crop cultivation, horticulture and livestock farming). Other economic activities include: agro-processing, forestry and commercial businesses.

3.3.3 Physical Infrastructure

Infrastructure is key to the achievement of the National Spatial Plan objectives of global competitiveness, regional balance and optimal utilization of land and other resources. Nyandarua has fairly developed infrastructure including transport, physical and social infrastructure. Which have a high potential of economically empowering its People and attracting private investors if well maintained. The sector faces problems regarding poor connection, low coverage, unreliability, high costs, skewed distribution and low/surpassed design. To rectify this situation clear indicative policy, strategies and measures have to be developed and implemented to achieve overall efficiency.

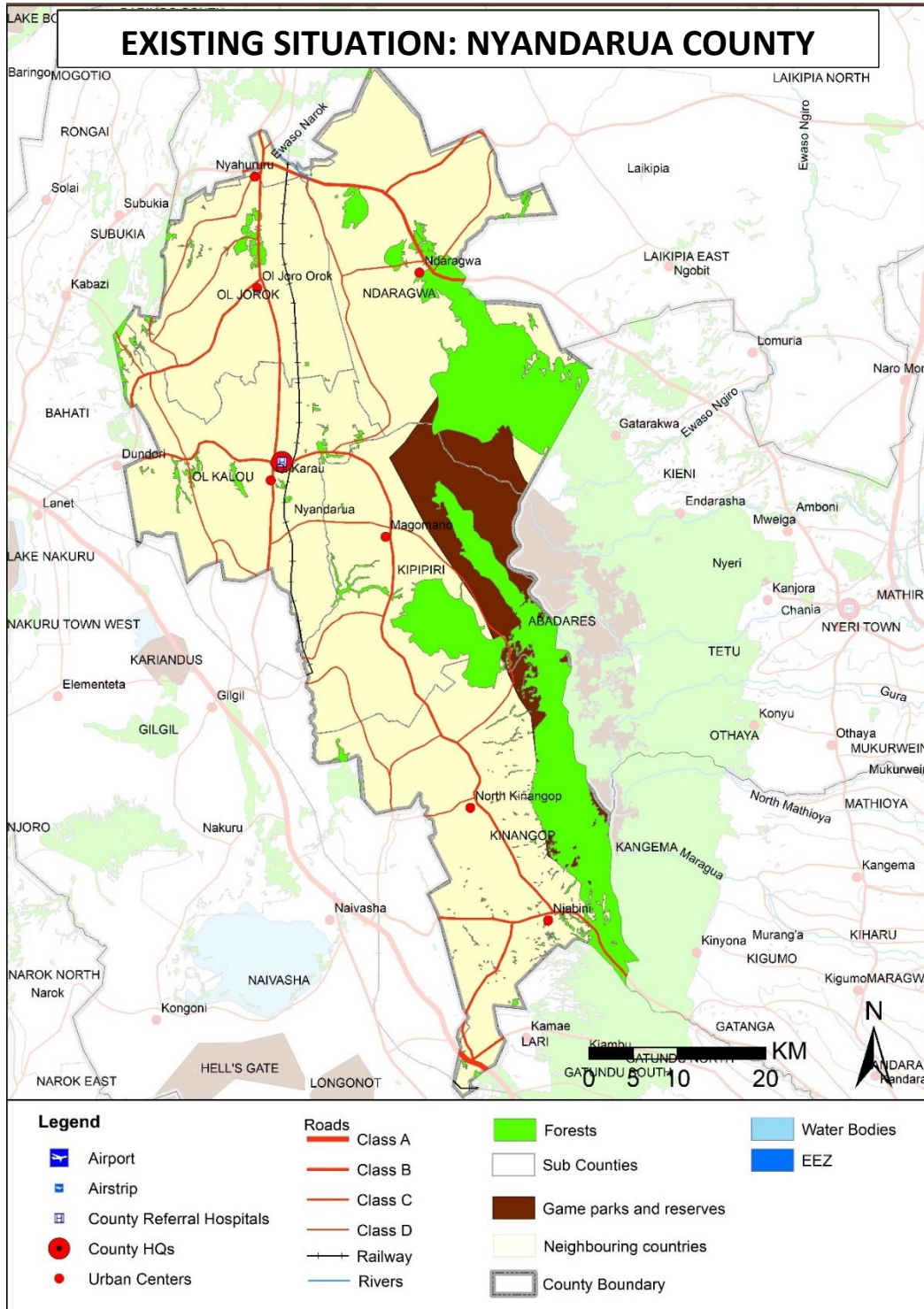
The road transport is the predominant transport mode in the county. The Njabini-Ndudori road (C69) and Gilgil-Nyahururu road (C77) that has improved its socio-economic as it is the only road that cuts across the county. There is one air strip in Nyandarua west district which is in good condition and is operational.

3.3.4 Public Utilities

To achieve a spatial and balanced regional development and meet demands of a growing population, there is need to develop and enhance economic infrastructure such as water services, waste management, energy and ICT to provide the foundation for economic development.

The map below explains further the existing situation in Nyandarua County as described above.

Map 2: Existing situation of Nyandarua County



Source: State Department for physical planning, 2022

3.4 Comparative Advantage

- a) The county is characterised by agricultural potential zones based on agro-ecological conditions making the area suitable for farming which increases the county's economic activity as farming is the main economic driver.
- b) There are both gazette and non-gazetted forests covering (49,916.2 Km²) which will be a source of timber and wood fuel that will earn the community income resulting to poverty reduction.
- c) The County is endowed with natural water resources including Lake Ol'bollosat, and rivers that increases water supply and irrigation potential in the county.
- d) The County has high potential for tourism due to tourist attractions like the Lake Ol'bollosat, Aberdare ranges, Mau-Mau caves and Aberdare National Park to the East that contributes to county's source of revenue and the community will earn livelihood from the activities that would be taking place from there.
- e) The soils in the County are of volcanic origin and vary in both fertility and distribution hence encouraging cultivation of the different types of crops.

CHAPTER 4: COUNTY SPECIFIC ISSUES, DEVELOPMENT STRATEGIES AND POLICY GUIDELINES

4.1 County Specific Issues and Strategies

This section provides strategies for spatial growth and development of the County by addressing the factors that prevent the County from achieving the intended development goals and objectives.

The development strategies aim at managing the overall development impacts, optimizing use of natural resources, creating a balanced County and transforming rural areas. Specifically, the development strategies have been proposed to address the following aspects of the County's development agenda:

- Managing the national competitiveness
- Optimal use of land and other resources
- Promoting balanced Intra- County development
- Rural development in the county
- Urbanization

The following are detailed NSP sector-specific issues and strategies that apply to Nyandarua County:

Table 3: specific issues and strategies

| Strategy 1: Enhancing National Competitiveness | | |
|----------------------------------------------------------------------------------------------------------------------------------------------------------------------------------------------------------------------------------------------------------------|------------------------------------------------------------------------------------------------------------------------------------------------------------------------------------------------------------------------------------------------------------------------------------------------------------------------------------------------------|------------------------------------------------------------------------------------------------------------------------------------------------------------------------------------------------------------------------------------------------------------------------------------------------------------------------------------------------------------------------------------------------------------------------------------------------------------------------------------------------------------------------------------------------------------------------------------------------------------|
| Opportunities | Constraints | Strategies |
| <ul style="list-style-type: none"> ✓ Strategic location of the county which cuts across the agro-climatic zones (I and II) which is suitable for farming ✓ Horticulture and floriculture potential ✓ Tourism attraction sites | <ul style="list-style-type: none"> ✓ Poor state and lack of connectivity of the roads ✓ Inadequate linkages with neighboring counties ✓ Inadequate and poor agricultural and tourism support infrastructures ✓ Use of inappropriate farm inputs and technology ✓ Encroachment on forest reserves. | <ul style="list-style-type: none"> ✓ Plan and provide appropriate hierarchy of roads to increase internal and external linkages within the county ✓ Provide adequate and appropriate infrastructure ✓ Adopt modern methods and practices as well as technology in the whole range of agricultural capabilities in that county ✓ Strengthen horticultural and service industries in the County ✓ Provide and enforce policies that would protect the forest reserves ✓ Offer incentives to attract investors in tourism industry to the county. |
| Strategy 2: Optimizing Land and Natural Resources | | |
| Agriculture | | |
| Opportunities | Constraints | Strategies |

| | | |
|---------------------------------------------------------------------------------------------------------------------------------------------------------------------------------------------------------------------------------------------------------------------------------------------------------------------------------------------------------------------------------------------------------------------------------------------------------------------------------------------------------------------------------------------------------|------------------------------------------------------------------------------------------------------------------------------------------------------------------------------------------------------------------------------------------------------------------------------------------------------------------------------------------------------------------------------------------------------------------------------------------------------------------------------------------------------------------------------------------------------------------------------------------------------|----------------------------------------------------------------------------------------------------------------------------------------------------------------------------------------------------------------------------------------------------------------------------------------------------------------------------------------------------------------------------------------------------------------------------------------------------------------------------------------------------------------------------------------------------------------|
| <ul style="list-style-type: none"> ✓ Abundant land resource for development <p>Crop farming</p> <ul style="list-style-type: none"> ✓ Agro-climatic zone (I- II) with high potential for agricultural production ✓ Potential growth of various types of agricultural produce ✓ Irrigation potentials through rivers <p>Livestock keeping</p> <ul style="list-style-type: none"> ✓ The county has a medium potential region of livestock keeping hence high Dairy production | <ul style="list-style-type: none"> ✓ Uneven development patterns ✓ Inadequate spatial frameworks to manage land uses ✓ Uneconomical fragmentation of land parcels due to human settlements ✓ Low uptake of appropriate technology and skills to produce, process, preserve and market agricultural products ✓ Inadequate agricultural support infrastructure ✓ Use of inappropriate farm inputs and technology ✓ Inadequate and/or poorly developed irrigation facilities ✓ Slow adoption of technology and innovation | <ul style="list-style-type: none"> ✓ Formulate policies to tap the capability and potentials of the county ✓ Formulate appropriate policy framework to stop further fragmentation of agricultural land ✓ Adopt modern methods and practices as well as technology in the whole range of agricultural capabilities in the county ✓ Agricultural support infrastructure should be provided to match the function ✓ Collaborate with other partners to enhance the irrigation potential and improve facilities |
|---------------------------------------------------------------------------------------------------------------------------------------------------------------------------------------------------------------------------------------------------------------------------------------------------------------------------------------------------------------------------------------------------------------------------------------------------------------------------------------------------------------------------------------------------------|------------------------------------------------------------------------------------------------------------------------------------------------------------------------------------------------------------------------------------------------------------------------------------------------------------------------------------------------------------------------------------------------------------------------------------------------------------------------------------------------------------------------------------------------------------------------------------------------------|----------------------------------------------------------------------------------------------------------------------------------------------------------------------------------------------------------------------------------------------------------------------------------------------------------------------------------------------------------------------------------------------------------------------------------------------------------------------------------------------------------------------------------------------------------------|

| | | |
|-------------------------------------------------------------------------------------------------------------------------------------------------------------|----------------------------------------------------------------------------------------------------------------------------------------------------------------------------------------------------------------------|----------------------------------------------------------------------------------------------------------------------------------------------------------------------------------------------------------------------------------------------------------------------------------------------------------|
| | | <ul style="list-style-type: none"> ✓ Promote blue economy through exploitation of water resources in the County |
| Environment (Conservation Area & Protection Area) | | |
| Opportunity | Constraint | Strategy |
| <ul style="list-style-type: none"> ✓ Existing forest cover and agroforestry being practiced by the community ✓ Diverse biodiversity | <ul style="list-style-type: none"> ✓ Soil erosion ✓ loss of vegetation ✓ Encroachment of human settlements on the forest reserves ✓ Planting of blue gum along water banks | <ul style="list-style-type: none"> ✓ Increase forest cover through afforestation, re-afforestation and agro forestry ✓ Formulate policy frameworks to protect the reserve areas ✓ Sensitize the Planting of gravellia to replace blue gum on the banks of water sources |
| <ul style="list-style-type: none"> ✓ Existing natural resources (forests, wet lands, swamps) | <ul style="list-style-type: none"> ✓ Deforestation ✓ Drying up of water sources | <ul style="list-style-type: none"> ✓ Formulate policy frameworks to protect water catchment areas. |

| | | |
|------------------------------------------------------------------------------------------------------------------------|-----------------------------------------------------------------------------------------------------------------------------------------------------------------------------------------------------------------------------------------------------------|------------------------------------------------------------------------------------------------------------------------------------------------------------------------------------------------------------------------------------------------------------------------------------------------------------------------------------------------------------|
| <ul style="list-style-type: none"> ✓ Existing policies and bodies dealing with environmental protection | <ul style="list-style-type: none"> ✓ Encroachment by human settlement and activities ✓ Declining water quality from Pollution and extensive cultivation along water sources ✓ Poor enforcement of the Environmental Acts | <ul style="list-style-type: none"> ✓ Control water abstraction by sensitizing the planting of gravellia on along the water sources ✓ Formulate policy frameworks to contain human settlement and hinder land use change within these areas ✓ Monitoring and evaluating human activities through evaluation of EIA Reports |
| Natural Resource | | |
| Opportunity | Constraint | Strategy |
| <ul style="list-style-type: none"> ✓ Underground water reservoir | <ul style="list-style-type: none"> ✓ Inadequate technology and exploration infrastructure ✓ Inadequate rain water harvesting technology ✓ Lack of a regulatory framework in exploitation of underground water | <ul style="list-style-type: none"> ✓ Adopt sustainable exploitation of the available natural resource potential ✓ Invest in appropriate technology and infrastructure |

| | | |
|-----------------------------------------------------------------------------------------------------------------------------------------------------------------------------------------------------------------------------------------|--------------------------------------------------------------------------------------------------------------------------------------------------------------------------------------------------------------------------------------------------------------------------------------------------------------|------------------------------------------------------------------------------------------------------------------------------------------------------------------------------------------------------------------------------------------------------------------------------------------------------|
| | | <ul style="list-style-type: none"> ✓ Plan and provide appropriate storm water management infrastructure to optimize rain water harvesting ✓ Formulate policies to guide regulation of underground water exploitation |
| Industrial | | |
| Opportunity | Constraint | Strategy |
| <ul style="list-style-type: none"> ✓ Manufacturing potential in agro based industries like dairy processing, horticulture, floriculture, irish to potato processing. ✓ Availability of cooperatives and Sacco's | <ul style="list-style-type: none"> ✓ Poor linkage to the markets due to inadequate internal and external connectivity and support infrastructure ✓ Low technological adaptation for value addition ✓ Price fluctuation ✓ Insufficient market for finished products | <ul style="list-style-type: none"> ✓ Plan and provide appropriate hierarchy of roads to increase internal and external linkages within the county ✓ Provide appropriate technology to enhance value addition. ✓ Promote the formation of cooperatives and Saccos to |

| | | |
|------------------------------------------------------------------------------------------------------------------------------------------------------------------------------------------------|----------------------------------------------------------------------------------------------------------------------------------------------------------------------------------------------------------------------------------------------------------------------------------------------------------------------------------------------------------------------------------------------------------------------------------------|---------------------------------------------------------------------------------------------------------------------------------------------------------------------------------------------------------------------------------------------------------------------------------------------------------------|
| | | <p>advance marketing and control of market prices</p> <ul style="list-style-type: none"> ✓ Prepare and implement an industrial master plan ✓ Promote assertive marketing campaigns for products both domestically and internationally |
| Tourism (central and great rift valley Circuit) | | |
| Opportunity | Constraint | Strategy |
| <ul style="list-style-type: none"> ✓ The existing tourist attraction sites (Lake Ol'bollosat, Aberdare ranges, white mischief valley homes, Aberdare National Park to the east) | <ul style="list-style-type: none"> ✓ Little exploitation of tourism potential due to poor quality and inadequate infrastructure ✓ Encroachment of human activities into the protected areas ✓ Poor marketing strategies to promote tourism ✓ Poaching and human wildlife conflicts ✓ Over reliance on foreign tourism and few marketing ventures targeting non-traditional tourists | <ul style="list-style-type: none"> ✓ Plan and provide appropriate tourism support infrastructure. ✓ Promote domestic tourism by providing incentives and subsidies ✓ Enhance security in tourism potential areas ✓ Plan and implement transportation infrastructure |

| | | |
|-----------------------------------------------------------------------------------------------------------------------------------------------------------------------------------------------------|--------------------------------------------------------------------------------------------------------------------------------------------------------------------------------------------------------------------------------------------------------------------------------------------------|---------------------------------------------------------------------------------------------------------------------------------------------------------------------------------------------------------------------------------------------------------------------------------------------------------------|
| | <ul style="list-style-type: none"> ✓ Insecurity concerns leading to negative travel advisories ✓ Encroachment of human activities into protected areas | <ul style="list-style-type: none"> ✓ Strict enforcement of the existing regulations for safeguarding protection areas ✓ Delegation and gazettement of delineated natural forests, wetlands and water towers ✓ Promote domestic tourism by providing incentives and subsidies |
| Public Utilities | | |
| Water and Sanitation | | |
| <ul style="list-style-type: none"> ✓ Financial and technical support from the national government and non-governmental organizations in provision of water and sanitation facilities | <ul style="list-style-type: none"> ✓ Inadequate accessibility to portable water points ✓ Encroachment of human activities into catchment areas ✓ Inadequate sanitation facilities in urban and rural areas ✓ Inadequate technology and infrastructure. | <ul style="list-style-type: none"> ✓ Protection of catchment areas ✓ Investments in water harvesting technologies and storage facilities ✓ Exploit underground water to increase the total supply of water |

| | | |
|----------------------------------------------------------------------------------------------------------------------------------------------------|--------------------------------------------------------------------------------------------------------------------------------------------------------------------------------------------------------------------------------------------------------------------------------------------------------------------------------------------------------|----------------------------------------------------------------------------------------------------------------------------------------------------------------------------------------------------------------------------------------------------------------|
| | | <ul style="list-style-type: none"> ✓ Expansion of existing water supplies in the county ✓ Appropriate sanitation infrastructure including collection, disposal and treatment system be developed in all urban areas |
| Public Utilities | | |
| Water and Sanitation | | |
| <ul style="list-style-type: none"> ✓ Availability of water sources (rivers, lakes) ✓ Existing sewerage system in Nyandarua | <ul style="list-style-type: none"> ✓ Encroachment of human activities into catchment areas ✓ Unreliable access to clean and sufficient water ✓ Population increase resulting to high demand surpassing its supply (both water and waste management) ✓ contamination of the available water (Water pollution) | <ul style="list-style-type: none"> ✓ Effective enforcement of environmental and natural resources policies, laws and regulations ✓ Improve access to clean and safe water ✓ Increase access to adequate sanitation facilities |

| | | |
|--------------------------------------------------------------------------------------------------------------------|------------------------------------------------------------------------------------------------------------------------------------------------------------------------------------|-------------------------------------------------------------------------------------------------------------------------------------------------------------------------------------------------------------------------------------------------------------------------------|
| | <ul style="list-style-type: none"> ✓ Inadequate sewerage coverage and treatment facilities. ✓ Inadequate technology and infrastructure | <ul style="list-style-type: none"> ✓ Investments in water harvesting technologies and storage facilities ✓ Appropriate sanitation infrastructure including collection, disposal and treatment system be developed in all urban areas |
| Solid waste management | | |
| <ul style="list-style-type: none"> ✓ Existing policies on waste management activities in the County | <ul style="list-style-type: none"> ✓ Increased solid waste generation due to increased population pressure ✓ Inadequate solid wastes management facilities | <ul style="list-style-type: none"> ✓ Provide solid waste management facilities ✓ Promote the, Reduce, Reuse, Recycle (3Rs) ✓ Explore other modes of solid waste management such as recycling of waste materials and waste-energy facilities. |
| ENERGY | | |

| | | |
|--------------------------------------------------------------------------------|-------------------------------------------------------------------------------------------------------------------------------------------------------------------------------------------------------------------------------------------------------------------------------------------------------------------------------|-----------------------------------------------------------------------------------------------------------------------------------------------------------------------------------------------------------------------------------------------------------------------------------------------------------------------------------------------------------------------------------------------|
| <ul style="list-style-type: none"> ✓ Alternative energy sources | <ul style="list-style-type: none"> ✓ Under exploitation of energy resources ✓ Lack of proper assessment and research on exploitation of green energy ✓ Lack of relevant policy that guide the tapping and use of energy resources ✓ High cost of transmission of power to consumers | <ul style="list-style-type: none"> ✓ Encourage use of renewable energy ✓ Develop a policy to guide the exploitation and use of potential green energy sources ✓ Use of most appropriate energy consuming equipment to ensure efficient and productive use of energy ✓ Advocate and plan for expansion of electricity cover to other trading centers |
| ICT (Information and Communication Technology) | | |
| <p>Existing National Fiber Optic network (NOFBI)</p> | <ul style="list-style-type: none"> ✓ Poor access to ICT infrastructure ✓ High cost of ICT equipment | <ul style="list-style-type: none"> ✓ Increase ICT relevant infrastructure ✓ Mainstream ICT in all sectors to promote service delivery |

| | | |
|-------------------------------------------------------------------------------------------------------------------------------------------------------------------------------------------------------------------------------------------------------|------------------------------------------------------------------------------------------------------------------------------------------------------------------------------------------------------------------------------------------------------------------------------------------------------------------------------------------------------------------------------------------------------------------|-------------------------------------------------------------------------------------------------------------------------------------------------------------------------------------------------------------------------------------------------------------------------------------------------------------------------------------------------------------------------------------------------------------------------------------------|
| | | <ul style="list-style-type: none"> ✓ Improve ICT adoption ✓ improve on existing platforms such as Huduma centre, BPO services and E-government |
| Strategy 3: Balanced Intra- County Development | | |
| <ul style="list-style-type: none"> ✓ Varied resource endowment including fertile soils, forests, favorable climatic conditions ✓ Enabling policy and legal frameworks ✓ Establishment of the County under devolution | <ul style="list-style-type: none"> ✓ Weak linkages between rural and urban areas. ✓ Inadequate infrastructural facilities and services ✓ Lack of a spatial framework ✓ Lack of the analysis of the potentials ✓ Corruption ✓ Under-exploitation of resources ✓ Uneven distribution of infrastructure ✓ Ethicized governance system | <ul style="list-style-type: none"> ✓ Establish strong rural urban linkages ✓ Promote industrialization and value addition in less developed regions ✓ Promote investment in sustainable tourism ✓ Strengthen the existing economic zones in all the regions to promote processing and value addition of the various products ✓ Promote irrigation activities for improved productivity |

| | | |
|----------------------------------------------------------------------------------------------------------------------------------------------------------------------------------------------------------------------------------------------------------------------------------------------------------------------------------------------------------------------------------------------|---------------------------------------------------------------------------------------------------------------------------------------------------------------------------------------------------------------------------------------------------------------------------------------------------------------------------------------------------------------------------------------------------------------------------------------------------------------------------------------------------|-----------------------------------------------------------------------------------------------------------------------------------------------------------------------------------------------------------------------------------------------------------------------------------------------------------------------------------------------------------------------------------------------------------------------------------------------------------------------------------------------------------------------|
| | | <ul style="list-style-type: none"> ✓ Promote equal distribution of infrastructures |
| Strategy 4: Promoting Rural Development | | |
| <ul style="list-style-type: none"> ✓ Resource endowment in rural areas (agriculture, large-scale livestock production and tourism) ✓ Human resource (both skilled and unskilled) ✓ Existing physical and social infrastructure (roads, schools, health centres, administrative units) ✓ Enabling policy and legal frameworks ✓ Devolution | <ul style="list-style-type: none"> ✓ Inefficient and dilapidated infrastructure facilities and services ✓ Poor knowledge on how to use the resources ✓ Weak rural-urban linkages ✓ Underutilization of the resources in the rural areas ✓ inappropriate transport infrastructure and utilities ✓ The dispersed nature of the human settlements, ✓ Fragmentation of land into uneconomical parcels due to population pressure | <ul style="list-style-type: none"> ✓ Promote rural industrialization and value addition in less developed regions ✓ Plan and provide strong rural urban linkages ✓ Sustainable utilization of available resources in the rural areas ✓ Plan and develop appropriate transport and infrastructural facilities and services to support the exploitation of resources ✓ Formulate appropriate policy framework to stop further fragmentation of agricultural land and |

| | | |
|---------------------------------------------------------------------------------------------------------------------------------------------------------------------------------------------------------------------------------------------------------------|--------------------------------------------------------------------------------------------------------------------------------------------------------------------------------------------------------------------------------------------------------------------------------------------------------------------------------------------------------------------------------------------------------------------------------------|------------------------------------------------------------------------------------------------------------------------------------------------------------------------------------------------------------------------------------------------------------------------------------------------------------|
| | | <p>explore land consolidation strategy</p> <ul style="list-style-type: none"> ✓ Modernize agriculture to promote high yield production ✓ Promote rural industrialization, tourism and agro-based industries in rural areas |
| Strategy 5: Urbanization | | |
| <ul style="list-style-type: none"> ✓ Human resource (both skilled and unskilled) ✓ Enabling policy framework ✓ Existing infrastructure ✓ Devolution of governance ✓ Establishment of equalization of funds | <ul style="list-style-type: none"> ✓ Weak rural-urban linkages ✓ Rapid urbanization rates ✓ Poor enforcement of existing legislation on housing development and land use ✓ Poor implementation of development plans and planning policies ✓ Inappropriate and deteriorating infrastructures and utilities ✓ Poor waste management ✓ Land and governance issues. | <ul style="list-style-type: none"> ✓ Strengthen the urban rural linkages to reduce the rate of urbanization ✓ Provide services and infrastructure closer to the rural areas ✓ Enforce, harmonize and regularly review the existing legislative and regulatory instruments |

| | | |
|--|---------------------------------------------------------------------------------------------------------------------------------------------------------|-----------------------------------------------------------------------------------------------------------------------------------------------------------------------------------------------------------------------------------------------------------------------------------------------------------------------------------------------------------------------------------------------------------------------------------------------------------------------|
| | <ul style="list-style-type: none"> ✓ Proliferation of informal settlements ✓ Land and governance issues ✓ Urban sprawl | <ul style="list-style-type: none"> ✓ Plan and provide appropriate and adequate transport infrastructure and utilities ✓ Promote the development of centres as per its potential and population ✓ Promote sustainable waste management ✓ Strengthen existing land management institutions ✓ Plan, implement and enforce urban plans for the existing centres to control urban sprawl and promote urban containment. |
|--|---------------------------------------------------------------------------------------------------------------------------------------------------------|-----------------------------------------------------------------------------------------------------------------------------------------------------------------------------------------------------------------------------------------------------------------------------------------------------------------------------------------------------------------------------------------------------------------------------------------------------------------------|

Source: State Department for Physical Planning, 2022

4.2 Policies Guidelines and Measures

This section seeks to provide the spatial policy guidelines and measures aimed at promoting the achievements of the objectives of the National Spatial Plan using its guidelines. They aim at enhancing global and national competitiveness and economic efficiency, optimizing the use of land and natural resources, promoting regional balanced development and conservation of the environment.

These policies are supported by a wide range of measures which spell out the specific actions to be undertaken to actualize the policy intentions. The policies shall ensure that the County is nationally competitive as an investment destination, especially in emerging sectors such as the ICT. The policies will also be implemented by the County government's agencies responsible for planning and development control as well as the authorities responsible for land administration.

The following are policies and measures specific to Nyandarua County.

Table 4: Policy Guidelines and measures

| No | Thematic Area | Policy Guidelines | Measures |
|----|-------------------------------------------|-------------------------------------------------------------------------------------------------------------------------------------------------------------------------------------------------------------------------------|---------------------------------------------------------------------------------------------------------------------------------------------------------------------------------------------------------------------------------------------------------------------------------------------------------------------------------------------------------------------------------------------------------------------------------------------------------------------------------|
| 1. | Resource Potential Growth regions | <ul style="list-style-type: none"> Nyandarua to be developed based on its rain fed agriculture and livestock production potential | <ul style="list-style-type: none"> Infrastructure provision to support value addition initiatives and human settlement Small and medium urban centres development Conservation of the environment and natural resources Rural development through provision of infrastructure, agricultural sector development and related economic activities Development and rehabilitation of key infrastructure in underserved locations |
| 2. | Enhancing National Competitiveness | <ul style="list-style-type: none"> The selective concentration concept shall be adopted for the planning and location of urban based economic activities in the county to leverage on national competitiveness | <ul style="list-style-type: none"> Concentrate urban based economic activities in selected urban areas Prioritize preparation of Spatial Development Plans Enhance the Livability Index for urban areas by providing quality social and physical infrastructure |

| | | | |
|----|--------------------------------------------------------------------|-----------------------------------------------------------------------------------------------------------------------------------------------------------------------------------------------------------------------------------------------------------------------------------------------------------------------------------------------------------------------------------------------------------------------------------------------------------------------------------------------------------------------------------------------------------------|-----------------------------------------------------------------------------------------------------------------------------------------------------------------------------------------------------------------------------------------------------------------------------------------------------------------------------------------------------------------------------------------------------------------------------------------|
| | | <ul style="list-style-type: none"> • The major urban areas shall be planned and provided with appropriate infrastructure to enhance efficiency and quality of life • Land and natural resources of the less developed areas shall be utilized optimally and sustainably • The efficiency of the transportation network shall be enhanced to take advantage of the strategic location and position of the county • Enhanced cooperation in spatial and economic planning with neighboring counties and regional blocs. | <ul style="list-style-type: none"> • Advance Technological Readiness through the provision of technological centers linked to different levels all over the country e.g. Science parks, Research laboratories etc. • Modernize agriculture • Value addition and improved marketing channels • Explore and sustainably exploit natural resources • Provide appropriate infrastructure |
| 3. | Modernizing Agriculture (Agro-climatic zone I-II) | <ul style="list-style-type: none"> • The agricultural use of land in high potential areas shall be intensified to increase productivity. | <ul style="list-style-type: none"> • Prepare and implement County spatial plan and lower level plans to protect agricultural land • Prohibit and control change of use and subdivision for designated agricultural land. • Adopt modern agricultural methods • Provide transport connectivity and adequate inter and intra-road networks as well as other social and physical infrastructure |

| | | | |
|----|---------------------------------------------------------------------|-----------------------------------------------------------------------------------------------------------------------------------------------------------------------------------------------------------------------------------------------------------------------------------------------------------------------------------------------------------------------------------------------------------------------------------------------|-------------------------------------------------------------------------------------------------------------------------------------------------------------------------------------------------------------------------------------------------------------------------------------------------------------------------------------------------------------------------------------------------------------------------------------------------------------------------|
| | | | <ul style="list-style-type: none"> • Value addition to agricultural and livestock products. |
| 4. | Diversifying Tourism (central and great rift valley Circuit) | <ul style="list-style-type: none"> • The county shall promote diversification of tourism by promoting the diverse products available in the county as well as adding more where possible. • Appropriate Tourism support infrastructure and facilities shall be provided • Tourist attraction areas and sites shall be conserved and protected • Governance of the tourism sector shall be enhanced. | <ul style="list-style-type: none"> • Improve infrastructure that supports tourism • Prepare a county tourism development master plan which should focus on tourism sites zoning, product development and quality standard of tourism services. • Strictly regulate developments within the tourist attraction sites. • Undertake research to identify more tourist attraction areas and sites, inventorize Agro tourism sites |
| 5. | Managing Human Settlements | <ul style="list-style-type: none"> • Existing urban areas shall be subjected to strict development control to curtail encroachment on high potential agricultural land • Rural growth centres shall be rationalized and supported to act as central places and settlements clustered to free the rich agricultural land | <ul style="list-style-type: none"> • Prepare and implement local physical development plans to define the urban growth limits for the principal urban centres • Enforce strict regulations and justifications on development control processes. • Provide requisite infrastructure to support growth and development. |

| | | | |
|----|-------------------------------------------|-----------------------------------------------------------------------------------------------------------------------------------------------------------------------------------------------------------------------------------------------------------------------------------------------------------------------------------------------------------------------------------------------------------------------------------------------------------------------------------------------------------------------------------------------------------------------------------------------------------------------------------------|------------------------------------------------------------------------------------------------------------------------------------------------------------------------------------------------------------------------------------------------------------------------------------------------------------------------------------------------------------------------------------------|
| | | <ul style="list-style-type: none"> • Human settlements shall be developed in line with environmental and natural resources conservation • Provision of an efficient, reliable and effective transport system for human settlements • The management and governance of Human • Settlements particularly the urban areas shall be improved. • Advocate for upgrading of the existing settlements and forestalling of new informal settlements • Peri-urban development shall be managed and controlled to contain urban growth within its limits and protect rural land uses. | <ul style="list-style-type: none"> • Promote sectors such as agriculture that have potential to stimulate rural development • Incorporate disaster management and mitigation in planning of rural settlements. • Plan and provide an integrated waste management system. • Build institutional capacities of the urban areas management boards |
| 6. | Conserving the Natural Environment | <ul style="list-style-type: none"> • All environmentally sensitive areas shall be protected and utilized in a sustainable manner • All government agencies shall integrate environmental concerns in policy formulation, resource planning and development processes | <ul style="list-style-type: none"> • Prepare and implement integrated management plans for Environmental sensitive areas • Involve and empower communities in the management of environmentally sensitive areas and promote environmental education and awareness |

| | | | |
|----|--------------------------------------------------------|-------------------------------------------------------------------------------------------------------------------------------------------------------------------------------------------------------------------------------------------------------------------------------------------------|----------------------------------------------------------------------------------------------------------------------------------------------------------------------------------------------------------------------------------------------------------------------------------------------------------------------------------------------------------------------------------------------------------------------------------------------------------------------------------------------------------------------------------------------------------------------------------------------------------------------------------------------------------------------------|
| | | <ul style="list-style-type: none"> • Community participation shall be mainstreamed in the protection and conservation of natural resources • National and County Physical Planning departments shall mainstream climate change into their planning processes | <ul style="list-style-type: none"> • Adopt appropriate land use planning and watershed management practices for sustainable development • Promote sustainable waste Management and Pollution Control • Identify species which are rare and endangered with the aim of protecting them from extinction • Develop and implement harmonized regional plans for sustainable management of trans-boundary resources • Implement the National Climate Change Strategy and the National Climate Change Action plan • Strengthen Environmental Governance and harmonize sectoral policies, legislation and regulations |
| 7. | Integrating the National Transportation Network | <ul style="list-style-type: none"> • An integrated and functional transport system for the county and urban areas shall be developed • An urban transport policy that facilitates an integrated, balanced and environmentally sound urban transport system in which all | <ul style="list-style-type: none"> • Provide access and linkage, between county headquarter and sub-county headquarters and link them to national transportation corridors |

| | | | |
|----|---------------------------------------------|-----------------------------------------------------------------------------------------------------------------------------------------------------------------------------------------------------------------------------------------------------------------------------------------------------------------------------------------------------------|------------------------------------------------------------------------------------------------------------------------------------------------------------------------------------------------------------------------------------------------------------------------------------------------------------------------------------------------------------------------------------------------------------------------------------------------------------------------------------------------------------------------------------------------|
| | | <p>modes efficiently play their roles shall be developed</p> <ul style="list-style-type: none"> • Environmental conservation shall be upheld in the planning, development and management of the transportation network • An efficient and affordable Mass Public Transport for all urban areas in the country shall be developed | <ul style="list-style-type: none"> • Adopt transit oriented development in the planning, design and development of all public urban transport • Integrate land use with urban transport planning • Design and develop integrated transport networks that considers all different modes of transport • Establish a comprehensive transport management information system for all transport modes • Develop a public transport policy to regulate planning and management of public transport |
| 8. | Providing Appropriate Infrastructure | <ul style="list-style-type: none"> • Safe, adequate, reliable and affordable electricity for both urban and rural settlements shall be provided • Expansion and improvement of water reticulation systems to facilitate the access to clean, safe, adequate, reliable and affordable water in human settlements shall be promoted | <ul style="list-style-type: none"> • Mainstream and enforce green energy options in the design of buildings • Increase access to electricity through upgrading and expansion of the national power transmission and distribution network • Development of county rainwater harvesting strategy and water storage |

| | | | |
|--|--|------------------------------------------------------------------------------------------------------------------------------------------------------------------------------------------------------------------------------------------------------------------------------------------------------------------------------------------------------------------------------------------------------------------------------------------------------------------------------------------------------------------------------------------------------------------------------------------------------------------------------------------------------------------------------------------------------------------------------------------|------------------------------------------------------------------------------------------------------------------------------------------------------------------------------------------------------------------------------------------------------------------------------------------------------------------------------------------------------------------------------------------------------------------------------------------------------------------------------------------------------------------------------------------------------------------------------------------------------------------------------------------------------------------------------------------------------------------------------------------------------------------------------------------------------------------|
| | | <ul style="list-style-type: none"> • A globally competitive, accessible and affordable higher education, training and research facilities shall be promoted • A network of functional, efficient, safe, accessible and sustainable county health referral infrastructure shall be established • Appropriate, quality, efficient and cost effective ICT infrastructure in both rural and urban areas shall be promoted • The expansion of sewerage systems and waste management facilities shall be promoted to improve sanitation in human settlements • Sporting infrastructure shall be planned, developed, maintained and the existing rehabilitated to promote sports development | <p>investment plans for all the villages and urban centres;</p> <ul style="list-style-type: none"> • Restore all the water towers. • Build water kiosks and yard taps, develop water supply pipeline systems and sewers, and a comprehensive mapping of all water supplies systems in the informal settlements • All universities and other tertiary institutions to • invest in research, technology and innovation • Develop and upgrade physical infrastructure in • all education institutions to increase their capacity • Strengthen outreach systems for provision of • health services to marginalized and vulnerable • population • Provision of quality emergency health services at the point of need |
|--|--|------------------------------------------------------------------------------------------------------------------------------------------------------------------------------------------------------------------------------------------------------------------------------------------------------------------------------------------------------------------------------------------------------------------------------------------------------------------------------------------------------------------------------------------------------------------------------------------------------------------------------------------------------------------------------------------------------------------------------------------|------------------------------------------------------------------------------------------------------------------------------------------------------------------------------------------------------------------------------------------------------------------------------------------------------------------------------------------------------------------------------------------------------------------------------------------------------------------------------------------------------------------------------------------------------------------------------------------------------------------------------------------------------------------------------------------------------------------------------------------------------------------------------------------------------------------|

| | | | |
|----|-------------------------------------------------|---------------------------------------------------------------------------------------------------------------------------------------------------------------------------------------|-------------------------------------------------------------------------------------------------------------------------------------------------------------------------------------------------------------------------------------------------------------------------------------------------------------------------------------------------------------------------------------------------------------------------------------------------------------------------------------------------------------------------------------------------------------------------------------------------------------------------------------------------------------------------------------------|
| | | | <ul style="list-style-type: none"> • Develop and upgrade ICT Infrastructure to cover all the rural and local growth centres • Mainstream use of ICT in all levels of government and the private sector (e-government) • All spatial plans to make provision for development of sewer systems and treatment works and solid waste disposal sites • Expansion of urban boundaries to be guided by investment in infrastructural services • Adopt appropriate technology to facilitate reduction, recycle and reuse of waste (3R's) • Establish County Sports Talent Centers to nurture and develop sports talents in the county |
| 9. | Towards a Rapidly Industrializing county | <ul style="list-style-type: none"> • The cluster development strategy shall be promoted to focus on proximity to raw materials and markets of region specific products | <ul style="list-style-type: none"> • Prepare and implement an industrial master plan • Promote value addition in processing of local produce |

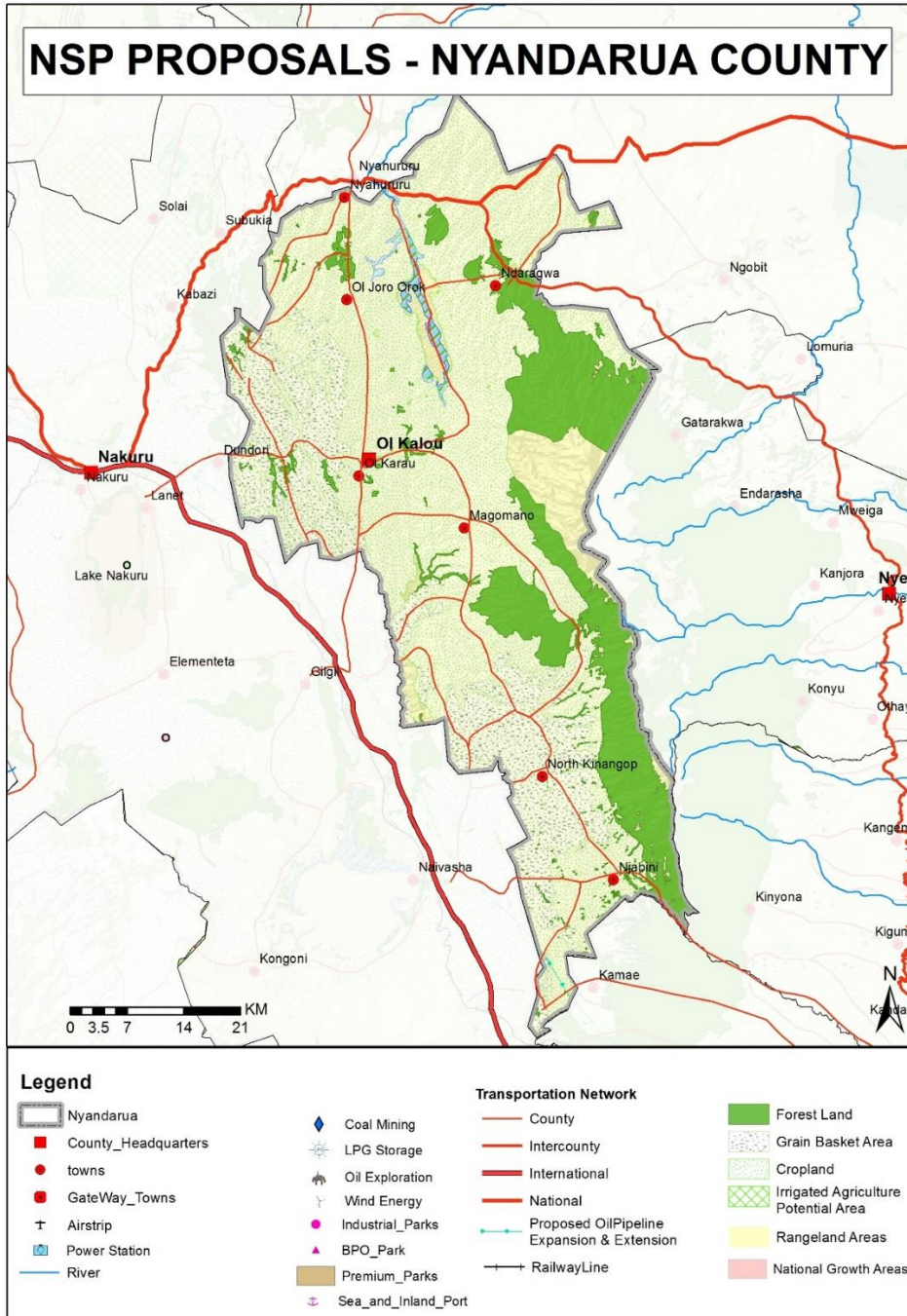
| | | | |
|--|--|--------------------------------------------------------------------------------------------------------------------------------------------------------------------------------------------------------------------------------------------------------------------------|------------------------------------------------------------------------------------------------------------------------------------------------------------------------------------------------------------------------------------------------------------------------------------------------------------------------------------------------------------------------------------------|
| | | <ul style="list-style-type: none"> • Specific sites for industrial development shall be identified, planned and serviced with the appropriate infrastructure • Adequate and affordable energy supply for the industrial sector shall be provided | <ul style="list-style-type: none"> • Integrate the industrialization process and environment conservation • Provide an integrated, efficient, reliable and sustainable transport and energy infrastructure • Adopt renewable energy generation programs • Promote the adoption of energy efficient technologies to lower the demand for energy |
|--|--|--------------------------------------------------------------------------------------------------------------------------------------------------------------------------------------------------------------------------------------------------------------------------|------------------------------------------------------------------------------------------------------------------------------------------------------------------------------------------------------------------------------------------------------------------------------------------------------------------------------------------------------------------------------------------|

Source: State Department for Physical Planning, 2022

DRAFT

The map below explains the NSP proposals in Nyandarua County.

Map 3: NSP Proposals for Nyandarua County



Source: State Department for physical planning, 2022

CHAPTER 5: IMPLEMENTATION AND ADOPTION OF THE GUIDELINES

5.1 Overview

The implementation framework identifies activities and further ties them with responsible actors, resources and timeframes adequate for their execution. It constitutes a deliberately established method, means or system of ensuring that the policies, strategies and measures outlined in the guidelines are continuously and consistently executed to achieve their objectives.

To effectively implement the guidelines, the various sectors, actors and levels of planning have been identified and have to work together and the mandate of the sectors at the National and County levels of planning have to be integrated.

5.2 Implementation Approaches

The County Specific Guidelines will be implemented through various approaches including:

1. Preparation of spatial plans to integrate and conform to the proposals of the County Guidelines. The plans include:
 - Inter-County Physical and Land Use Development Plans for Metropolitan regions, conservation zones, river basins, water towers, coastal ecosystems, trans-boundary resource areas and transport corridors, among others.
 - County Physical and Land Use Development Plans.
 - Local Physical and Land Use Development plans for Cities, Urban areas, special area plans, subject plans and detailed neighbourhood plans, among others.
 - Sectoral plans
2. Integration of the guideline policies, strategies and measures into the County sector plans, programs and projects. Ministries, Departments and Agencies (MDAs), County and National Departments identified in the plan to administer the policies, strategies

and measures are required to translate them into action plans, programmes and projects and to include them in their subsequent sector plans.

3. Formulation of policies, regulations and standards to guide development control

5.3 Implementation Framework

The implementation of the various policies, strategies, measures, programmes and projects under these Guidelines will involve a wide range of actors. It will require a coordinated approach and partnership between the National and County Governments and non-state actors. It may require re-engineering of institutions and a number of actors to undertake the implementation through a harmonized approach.

The National Spatial Plan identified a multi-levelled framework for implementation of the plan that incorporates all levels of actors. In this regard, the institutions identified in the NSP to undertake implementation of the plan at County-level shall also be mandated to ensure implementation of this Guidelines.

The following are the Institutions mandated to ensure implementation of the County Specific guidelines;

5.3.1 County Physical Planning Committee

The role of the County Planning Committee shall be to ensure aspirations of the guidelines are articulated in preparation of the County Spatial Plans, County Integrated Development Plans and Local Physical and Land Use Development Plans.

The composition of this committee consists of;

- i. The Governor who will be the Chairperson,
- ii. the Deputy Governor,
- iii. the County Executive Committee Members from various sectors
- iv. Directors from various relevant County Departments including Lands and Physical Planning, Economic planning, Agriculture, Industrialization, Tourism, Environment, Transport and Infrastructure

The functions of the committee include;

- 1) To promote effective integration between physical, economic and sectoral planning within the framework of county development policies.
- 2) To provide policy guidance for the implementation of strategic spatial projects
- 3) To ensure that the guidelines policies and measures are mainstreamed in the various county plans.

To mobilize resource for implementation of the Guidelines.

5.3.2 County Planning Unit (CPU)

The technical Unit shall provide technical support to the various implementing County departments on issues relating to physical planning.

The CPU shall;

- i. Monitor the Implementation of the guidelines.
- ii. To disseminate components of the guidelines to the various county departments.
- iii. Update the County Physical Planning Committee on a regular basis on the implementation of the guidelines.

The County Director of Physical Planning shall be responsible for preparation of an annual state of planning report which shall among other things appraise the status of implementation of the guidelines.

5.3.3 National Land Commission

The National Land Commission shall play its oversight role in land use planning to ensure efficient implementation of the NSP and the guidelines. Other functions of the Commission in the implementation of the NSP and the guidelines include the following: - To formulate mechanisms and parameters for monitoring and overseeing land use planning.

- i. To ensure that relevant planning authorities carry out their functions as required by law.

- ii. To make recommendations for improvements of the planning systems in the county.
- iii. To mobilize resources to support physical/land use planning.

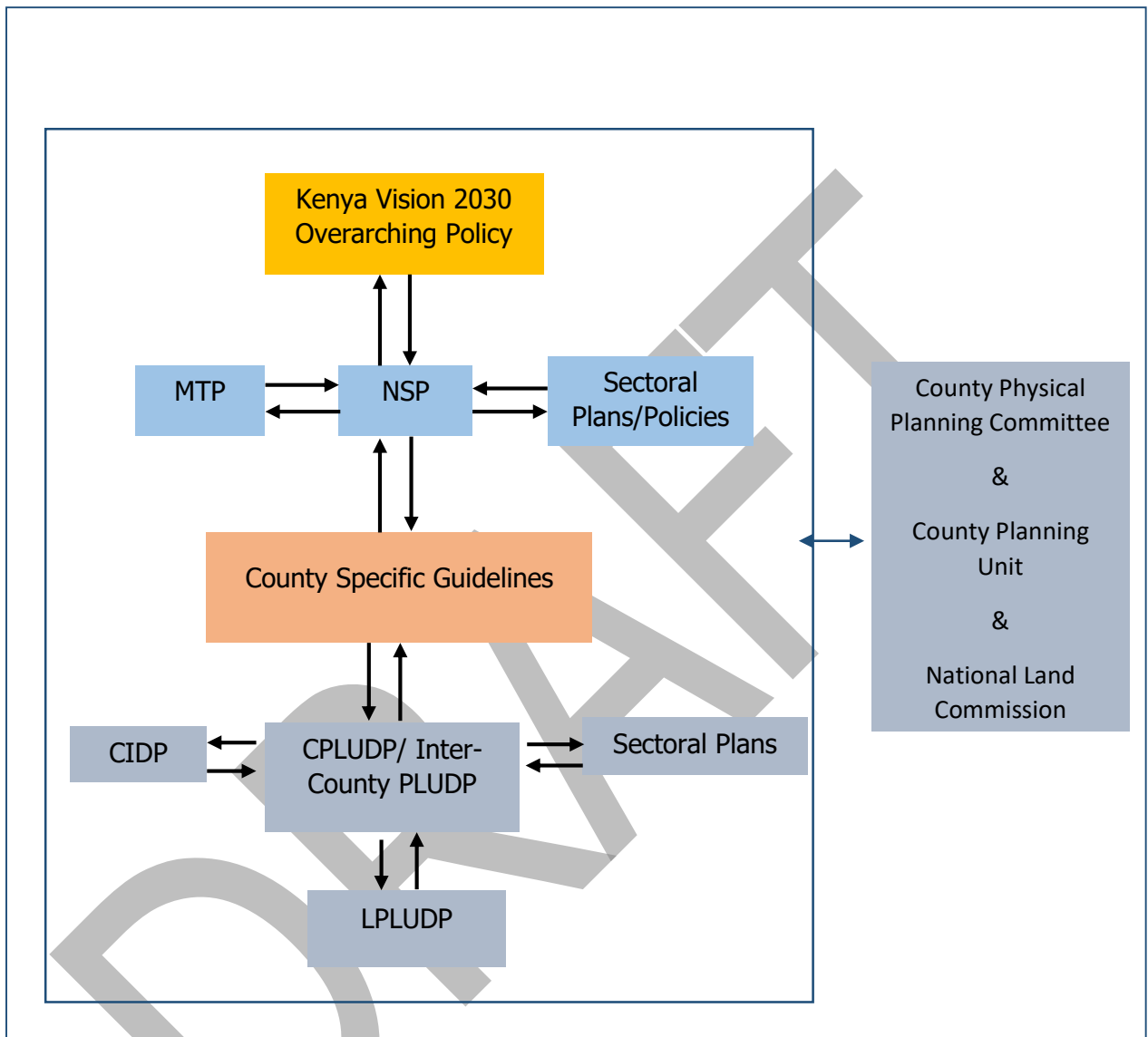
5.4 Monitoring and Evaluation

Implementation of the guidelines will be monitored and evaluated to measure both outputs and outcomes and ensure that the intended actions are implemented in a timely manner. To facilitate attainment of the objectives of the guidelines, performance indicators will be developed by the County Physical Planning Department for efficient monitoring. Periodic reports will be prepared in relation to progress being made in their implementation.

The graphic below illustrates the implementation structure for County Specific guidelines.

DRAFT

Figure 4: Implementation structure of the guidelines



Source: State Department for Physical Planning, 2022

5.5 Conclusion

The application of these guidelines will be undertaken by a number of actors and hence the need for a coordinated approach. The lead agency will be Nyandarua County Government which will be responsible for implementing various county specific initiatives proposed by the guidelines.

The National Government, County Government of Nyandarua, the private sector and the general public will be critical in actualizing the objectives of these guidelines. The County Physical Planning Committee shall develop a communication strategy to enhance the synergies.

The National Department of Physical Planning shall undertake sensitization, training and capacity building of the County Government and National Government institutions and agencies that will be involved in the implementation of these guidelines. Special attention will be given to the County physical planning units, as they will be expected to provide technical expertise in the implementation of the County specific policies and strategies.