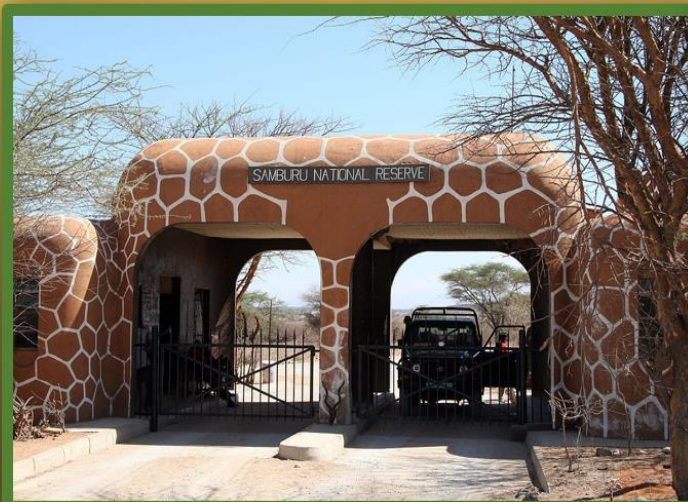




NATIONAL SPATIAL PLAN GUIDELINES FOR SAMBURU COUNTY



MINISTRY OF LANDS AND PHYSICAL PLANNING

JUNE 2022



Acknowledgments

FOREWORD

The Constitution of Kenya apportions responsibility of planning to both National and County Governments. Under the Fourth Schedule on distribution of functions, Part 1 (21) and (32) mandates the National Government with the responsibility of formulating general principles of land planning, co-ordination of planning by the Counties, capacity building and technical assistance to the Counties. On the other hand, Part 2(8) allocates the function of County planning and development to County Governments. It is under these provisions that the County specific guidelines have been prepared.

The Department of Physical Planning prepared the National Spatial Plan (NSP) in response to the Kenya Vision 2030 to guide the spatial development of the country over a period of 30 years beginning in 2015.

It aims at achieving an organized, integrated, sustainable and balanced development of the country by providing a framework for better national organization and linkages between different activities within the national space.

To implement the Plan, the Counties are expected to play a key role by mainstreaming strategies, policies, and measures identified in the NSP into the County spatial planning systems.

The guidelines have identified planning policies, strategies, and measures that Plans at the County level are expected to mainstream and propagate. The policies address among others, the protection of rich agricultural land, development imbalances, conservation of environmentally sensitive areas, urban containment, and promotion of industrial development.

The guidelines provide direction on the existing potentials, the opportunities, the constraints/challenges inhibiting harnessing of the potentials, the strategies to apply, respective policies required, and the necessary measures to achieve optimal productivity, sustainability, efficiency and equity in the use of county land resources.

The guidelines are an opportunity on how best to refocus, vary and complement areas that require different approaches responding to country-specific needs and promote the livelihoods of their people, while contributing to the national aspirations of vision 2030, regional objectives of the Africa Agenda 2063, and international targets of sustainable development. The refocusing will also be handy in reviewing and making decisions on NSP which is due for review in 2025.

These guidelines are therefore a tool for enhancing this critical path and provide a direction for development planning by the Counties as they discharge their responsibility of preparing county and local physical and land use development plans. The guidelines will also ensure that the County Integrated Development Plans conform to the proposed County specific policy guidelines and measures.

DRAFT

PREFACE

The National Spatial Plan (NSP) recognizes that Kenya is greatly endowed with massive and diverse resources distributed over the national space that require an integrated and coordinated approach for optimal productivity and sustainability.

The County Specific Guidelines have been derived from the National Spatial Plan and provide a planning framework for the integration of the NSP into the county spatial planning system. They are clear statements linking the National Spatial Plan to Inter-County, County and lower-level Physical and Land Use Development Plans and provide clarification on the anticipated sustainable development outcomes of implementing the Plan.

The County Government will adopt, develop and implement their plans based on the policies, strategies, and measures articulated in the guidelines. The realized county plans are expected to guide, harmonize and facilitate development within the county, hence contributing to the overall implementation of the NSP.

The guidelines also form an efficient compass and monitoring tool for National and County Governments to jointly pursue sustainable planning and appropriate implementation mechanisms.

For the county to be nationally competitive, there is need to balance development and promote optimal utilization of land and land-based resources as well as cultivate an integrated approach in addressing the intertwined challenges of regional imbalances/inequalities, rural development, underutilization of the available resources, uncontrolled urbanization, environmental degradation and inefficient transportation. It is imperative therefore, to prioritize the implementation of this strategic document so as to promote balanced development and competitiveness across the county

EXECUTIVE SUMMARY

The County Specific Guidelines seek to facilitate the implementation of the National Spatial Plan by outlining policies, strategies and measures to guide County spatial planning and development and promote optimal productivity, sustainability, efficiency and equity in the use of land. They provide a framework for preparation of lower level Plans including Inter-County, County and Local Physical and Land Use Development Plans.

The disconnect between National and County Spatial Planning and development has resulted in uncoordinated and unbalanced development, therefore creating a need for a clear structure that links National, Regional and Local planning and development. This is achievable through integration of the policies, strategies and measures proposed by the guidelines into County Spatial Plans, Programs and Projects, to tackle challenges of unbalanced regional development, urbanization, national competitiveness and unsustainable use of land and natural resources.

The County Specific Guidelines are organized into five chapters detailing various facets. Chapter one provides an overview, purpose and justification of preparation of the guidelines. It also outlines the objectives that the guidelines intend to achieve and details the preparation process as well as intended users. This chapter highlights the key principles that form the basis for preparation of lower level plans including public participation, liveability, sustainable development, urban containment, smart urban growth among others.

Chapter two details the legal and policy provisions that the guidelines are anchored upon. They include, among others, The Constitution of Kenya, 2010, The Physical and Land Use Planning Act No.13 of 2019, County Government Act, 2012, Environmental Management and Coordination (Amendment) Act, 2015, Sessional Paper No. 01 of 2017 on National Land Use Policy and Sessional Paper No. 10 of 2012 on Kenya Vision 2030.

The third chapter analyses the county profile, detailing its location, size, bio-physical characteristics, socioeconomic status and the County's comparative advantage in

relation to others. The locational context provides information on the geographical position and bordering Counties while the biophysical context discusses the topography, hydrology and climate. The socioeconomic status indicates key economic drivers of the County and its population and demographic structure.

Chapter four presents the County specific issues and proposes development strategies to promote national competitiveness, optimal use of land and resources, rural development, balanced intra-county development and urbanization. Additionally, it provides policy guidelines and measures for County advancement.

The final chapter five focuses on implementation and adoption of the guidelines. The implementation framework identifies institutions, County development programs and projects, and further ties them with responsible actors, resources and timeframes for effective execution. It proposes a framework for ensuring that the outlined policies, strategies and measures are adequately implemented.

DRAFT

Contents

List of Maps	9
List of Tables	9
List of Figures.....	9
1 INTRODUCTION	10
1.1 Background	10
1.2 Purpose of the Guidelines	10
1.3 Objectives of the Guidelines	11
1.4 Scope	11
1.5 Justification.....	12
1.6 Application of the guidelines.....	12
1.7 Process of Preparing the Guidelines.....	13
1.8 Targeted users.....	14
1.9 Key Principles	17
2 THE POLICY, LEGAL AND PLANNING FRAMEWORK FOR THE GUIDELINES.....	18
2.1 Constitutional context.....	18
2.2 Policy Context.....	18
2.2.1 Session paper No 10 of 2012 on The Kenya Vision 2030.....	18
2.2.2 Sessional Paper No. 1 of 2017 National Land Use Policy.....	18
2.3 Legal context.....	19
2.3.1 The Physical and Land Use Planning Act, 2019.....	19
2.3.2 County Governments Act, 2012	19
2.3.3 The Urban Areas and Cities (Amendment) Act, 2019	19
2.3.4 Environmental Management and Coordination (Amendment) Act, 2015.....	19
2.3.5 National Land Commission Act, 2012	20
2.4 Planning Context.....	20
2.4.1 National Spatial Plan (NSP)	20
2.4.2 NSP linkage to other plans	21
3 COUNTY PROFILE.....	24
3.1 Introduction.....	24
3.2 Location Context.....	24

3.3	Bio-Physical Context.....	26
3.3.1	Topography.....	26
3.3.2	Water Resources.....	26
3.3.3	Rainfall.....	26
3.3.4	Temperature.....	26
3.3.5	Land and Land use Patterns.....	26
3.4	Socio-Economic Background.....	27
3.4.1	Demography.....	27
3.4.2	Agriculture.....	27
3.4.3	Physical Infrastructure.....	27
3.4.4	Transportation.....	28
3.4.5	Public Amenities.....	28
3.5	County's Comparative Advantage.....	28
3.5.1	<i>Proximity to Lake Turkana Wind Power Project</i>	28
3.5.2	<i>Training Ground for British Army</i>	28
3.5.3	<i>Game Parks and Reserves</i>	28
3.5.4	<i>Lamu Port South Sudan and Ethiopia Transport Corridor (LAPSSET)</i>	28
4	DEVELOPMENT STRATEGIES AND POLICY GUIDELINES FOR SAMBURU COUNTY.....	30
4.1	County Specific Issues and Development Strategies.....	30
4.2	NATIONAL SPATIAL PLAN POLICY GUIDELINES AND MEASURE FOR SAMBURU COUNTY.....	41
5	IMPLEMENTATION AND ADOPTION OF THE GUIDELINES.....	55
5.1	Introduction.....	55
5.2	Implementation Channels.....	55
5.3	Implementation Framework.....	56
5.3.1	County Physical Planning Committee.....	56
5.3.2	County Planning Unit.....	57
5.3.3	National Land Commission.....	57
5.4	Monitoring and Evaluation.....	57
5.5	CONCLUSION.....	59

List of Maps

Map 1: Location of Samburu County	<u>Error! Bookmark not defined.</u> 24
Map 2: The Existing Situation in Samburu County	<u>Error! Bookmark not defined.</u> 28
Map 3: NSP Proposals for Samburu County.....	<u>Error! Bookmark not defined.</u> 48

List of Tables

Table 1: Targeted Users of the Guidelines	<u>Error! Bookmark not defined.</u> 15
Table 2: Population projection to the year 2045..	<u>Error! Bookmark not defined.</u> 27
Table 3: County Specific Issues and Development Strategies ..	<u>Error! Bookmark not defined.</u> 32
Table 4: NSP Policy guidelines and measures for the County ..	<u>Error! Bookmark not defined.</u> 41
Table 5: NSP Implementation Approaches	<u>Error! Bookmark not defined.</u> 50

List of Figures

Figure 1: The Scope of the Guidelines	<u>Error! Bookmark not defined.</u> 13
Figure 2: Policy Focus of the NSP	<u>Error! Bookmark not defined.</u> 21
Figure 3: NSP Linkage to other Plans.....	<u>Error! Bookmark not defined.</u> 23
Figure 4: NSP Implementation Organization Structure	<u>Error! Bookmark not defined.</u> 52

1 INTRODUCTION

1.1 Background

The County Guidelines set out policies, strategies and measures that will guide the long-term spatial development of the county for a period of 30 years. They cover the entire county and defines the general trend and direction of its spatial development.

The guidelines have been developed in line with the four thematic areas as outlined in the NSP. They provide a guide to the Planning Authority at the county on how to incorporate the NSP policies, strategies and measures during the preparation of County Spatial Plans and other lower level plans like the Local Physical and Land Use Development Plans consequently implementing the NSP.

The NSP County Specific implementation guidelines summarize the County's existing potentials and opportunities, the constraints (challenges) inhibiting harnessing of the potentials, the applicable strategies and respective policies required, and the necessary measures to achieve optimal productivity, sustainability, efficiency and equity in the use of the county land resources. They act as a reference point

1.2 Purpose of the Guidelines

The purpose of the County Specific Guidelines is to provide a planning framework for mainstreaming of the National Spatial Plan to the County spatial planning system.

The guidelines are intended to assist the County enhance the implementation of the NSP by linking the proposed county specific policies, strategies and measures into the County plans, programs and projects while putting measures in place for achieving them. The guidelines inform preparation of various County Physical Plans such as the County Physical and Land Use Development Plans.

For optimal implementation of these plans, a County Integrated Development Plan (CIDP) is essential since it is a sectoral and budgetary based plan that draws its implementation programs and projects from the County Physical Plans.

1.3 Objectives of the Guidelines

The guidelines provide policies, strategies and measures to deal with challenges of regional imbalances/inequalities, rural development, underutilization of the available resources, urbanization, environmental degradation and inefficient transportation.

Specifically, the objectives are;

1. To sensitize the County on the provisions of the NSP
2. To promote synergy between National and County planning
3. To guide the County, implement the NSP
4. To identify the roles of the different actors in the implementation of the NSP.

1.4 Scope

The guidelines comprise policies, strategies and measures specific to Samburu County covering approximately 2037 km². The guidelines highlight the County's existing potentials and opportunities, the constraints (challenges) inhibiting harnessing of the potentials, the applicable strategies and respective policies required, and the necessary measures, actions, approaches, plans and procedures prescribed to achieve optimal productivity, sustainability, efficiency and equity in the use of the county's land resources and an outline of activities to execute agreed interventions as captured in the National Spatial Plan, as indicated in Figure 1 below. These guidelines are effective up to the year 2045.

Figure 1: Facets of the guidelines



Source: *State Department for Physical Planning, 2022*

1.5 Justification

Since the approval and launch of the NSP, its implementation has been undertaken in an uncoordinated manner hence the guidelines will provide a standardized approach for all Counties. The guidelines are also an important tool for tracking and evaluating implementation of the NSP both at National and County levels.

The preparation of County Spatial Plans and other lower-level plans which is a mandate of Counties has been slow and, in some Counties, has not begun at all. These guidelines are therefore a quick reference in preparation of county plans and for some Counties to help optimize land in the absence of these plans.

1.6 Application of the guidelines

The guidelines will be used or applied in the following ways to achieve a more sustained and coordinated development of the County;

- To effectively coordinate planning between the National and the County Government;
- To improve the County Government's capacity to formulate, coordinate and implement integrated development policies, strategies, measures, programs and projects to address spatially unbalanced development;
- To inform strategic infrastructure policy and public investment decisions which support the achievement of balanced development in the County;
- To strengthen County inter-sectoral coordination within a spatial framework and provide the private sector with a clear context in which they can make investment decisions;
- To optimize the use of land and natural resources by providing a framework for making sustainable locational choices for sustainable development and conservation of land productivity in the County.

1.7 Process of Preparing the Guidelines

The process involved reviewing the National Spatial Plan and identifying key issues, spatial policies, development strategies and measures specific to Samburu County. These key issues, spatial policies, development strategies and measures will be realized through preparation of County and other lower-level plans.

Research was undertaken on various thematic areas to enrich the County specific issues and development strategies as well as policy guidelines and measures/ interventions. Further, preparation of the guidelines considered the constitutional, policy and legal provisions on physical and land use planning. Expert opinion was sought on the identified issues, policies, measures and strategies for implementation viability.

The preparation of the guidelines was identified as one of the implementation tools of the NSP, in which key NSP issues, policies, strategies and measures were translated into specific action plans, programs and projects at the County level.

1.8 Targeted users

These Guidelines have diverse consumers and application depending on prevailing circumstances and actors as demonstrated in Table 1 below:

Table 1: Targeted users of the guidelines

User	Application
County Executive Committee Member in charge of Physical and Land Use Planning	<ul style="list-style-type: none"> • Preparation of county and lower-level plans • Linkage of planning structures • Quality control of the various county plans • Formulate county planning policies and strategies • Establish county specific planning institutions • Coordinate and implement county plans and policies
The County Director of Physical and Land Use planning	<ul style="list-style-type: none"> • Advising the county government on the impact of the county specific guidelines to the county • Preparation of County physical and land use development plans and other lower level plans • Formulating County physical and land use planning policies, guidelines, strategies, and standards; • Issuance of development permission and other development control instruments under The Physical and Land Use Planning Act, 2013.

<p>Licensed physical and land use planners both in public and private sectors</p>	<ul style="list-style-type: none"> • Prepare, coordinate and implement spatial plans • Quality control of plans and consultancy services • Formulate policies, strategies and development guidelines • Dispute resolution
<p>County assembly</p>	<ul style="list-style-type: none"> • Approval of strategic sectoral budgets such as planning • Vetting of various County specific plans • Formulation and passing of County planning legislation • Enhance capacity to oversee the executive on spatial planning
<p>Ministries, Departments and Agencies</p>	<ul style="list-style-type: none"> • Mainstreaming relevant NSP policies, programs and projects • Allocation of resources to priority areas, • Strengthening linkages with spatial planning in resource management
<p>The National Land Commission (NLC)</p>	<ul style="list-style-type: none"> • Oversight role in land use planning to ensure efficient implementation of the NSP • Ensure relevant planning authorities carry out their functions as required by the law

Practitioners in the built environment	<ul style="list-style-type: none"> • Advance NSP relevant policies, programs and projects hence optimization of land resource • Appreciate sectoral Linkages to spatial planning • Facilitate incorporation of the policies, strategies and measures into, County specific plans
Community, developers and investors	<ul style="list-style-type: none"> • Comprehend the County priority sectors and County Plans and policies • Complement County spatial planning and implementation measures • Making informed investment decisions
Development partners	<ul style="list-style-type: none"> • Reference frame for selecting and funding spatial planning activities • Understand planning linkages and implementation • Informed development decisions
Training institutions	<ul style="list-style-type: none"> • Compliment the curriculum for training of spatial planners • Understand the planning procedures and processes

1.9 Key Principles

The principles, as applied in the NSP, should guide and form the basis upon which the lower-level physical and land use plans are prepared. Further the principles should ensure sustainable, coordinated, and realistic development. They include the following:

- 1. Effective Public participation/engagement:** All plans shall be prepared in a participatory and consultative manner with relevant stakeholders and sectoral actors.
- 2. Urban containment/Compact cities:** Local plans shall strive to limit and control urban growth within the set urban boundaries to protect rich agricultural land, mitigate urban sprawl and reduce cost of infrastructural provision.
- 3. Livability:** The planning of urban areas shall enhance the livability index in the area of housing, environment, transportation, health, and social engagement. The urban areas must be economically viable, socially inclusive and ecologically sustainable.
- 4. Smart and green urban growth:** Plans shall promote sustainable use of energy, creation of green spaces, reduce the need for car travel, and promote use of local materials, support businesses, protection of heritage and creation of unique character.
- 5. Sustainable development:** Balancing social, economic and environmental dimensions of development and catering for current and future generations.
- 6. Promotion of ecological integrity:** Plans shall promote the protection and conservation of environmentally sensitive areas.
- 7. Promote public transportation:** Favor public transportation over private transport to ensure efficiency and functionality of urban places.
- 8. Balanced development:** Plans to ensure there/ is balanced development in the County to cure inequalities.

2 THE POLICY, LEGAL AND PLANNING FRAMEWORK FOR THE GUIDELINES

2.1 Constitutional context

The formulation of these guidelines took into account the Constitution of Kenya 2010 aspirations and Principles. Article 66 of the Constitution of Kenya 2010 gives the State powers to regulate use of any land and property in the interest of land use planning among others. The guidelines are therefore within and in response to the aspirations, values and principles as provided for in the constitution.

2.2 Policy Context

2.2.1 Session paper No 10 of 2012 on The Kenya Vision 2030

Kenya Vision 2030 is the overarching national development framework which all plans should be aligned to. The preparation of all spatial plans should take cognizance of the aspirations, foundations and development concepts of the vision. The preparation of the first National Spatial Plan is identified in Kenya Vision 2030 as a flagship project and is regarded as one of the foundations for socio-economic transformation. Hence the need for linkage between national planning and county planning which will be achieved through mainstreaming NSP requirements into CSPs and other lower-level plans by preparing NSP county specific guidelines to implement the NSP at lower levels.

2.2.2 Sessional Paper No. 1 of 2017 National Land Use Policy

The policy was formulated to address the various challenges related to land use and ensure efficient, productive and sustainable use of land. The main goal of the policy is to provide legal, administrative, institutional and technological framework for optimal utilization and productivity of land related resources in a sustainable and desirable manner at national, County and community levels.

The policy recommends the preparation of a National Spatial Plan to provide an integrated framework for the development of the country including guidelines for sustainable rural and urban planning management. The policy also provides for the preparation of planning guidelines, policies and standards to be observed by County Governments and other sectoral agencies within the frameworks of approved physical and land use development

plans. These guidelines have been prepared on this basis and they are to be observed by counties in the implementation of the National Spatial Plan.

2.3 Legal context

Various Acts of Parliament are in place to provide the legal framework for the implementation of the mandate provided for in Article 66 of the Constitution. The Physical and Land Use Planning Act, 2019, The Urban Areas and Cities (Amendment) Act, 2019, County Governments Act No. 17 of 2012, The Land Act No. 6 of 2012, National Land Commission Act No. 5 of 2012 among others. The NSP County specific guidelines are prepared in this context and meet this criterion.

2.3.1 The Physical and Land Use Planning Act, 2019

This is the overarching statute that provides for formulation of both National and County physical and land use planning policies, guidelines and standards. The Act further provides for administration, types, content, process and approval of the various types of Physical and Land Use Development Plans.

2.3.2 County Governments Act, 2012

This statute mandates County Governments to carry out the planning function at the county level. The guidelines support preparation of the various county level plans that meet the recommended quality and standards.

2.3.3 The Urban Areas and Cities (Amendment) Act, 2019

The statute provides for classification of urban areas and cities, their governance and management, and for integrated development planning. The guidelines are a basis for preparation of these lower-level plans.

2.3.4 Environmental Management and Coordination (Amendment) Act, 2015

The Act provides for the establishment of an appropriate legal and institutional framework for the management of the environment as well as guidelines relating to environmental

management and prevention or abatement of environmental degradation. The guidelines take cognizance of this Act and will be implemented within the framework.

2.3.5 National Land Commission Act, 2012

Provides the National Land Commission the management and administration of public land on behalf of the National and County Government and to monitor oversight planning in the Country. The guidelines fall within the ambit of this statute and will facilitate their oversight responsibilities.

2.4 Planning Context

2.4.1 National Spatial Plan (NSP)

The National Spatial Plan (NSP) covers the whole country encompassing the exclusive economic zone. The NSP outlines policies and strategies geared towards influencing desired future distribution and organization of human activity outlined in Vision 2030 and sectoral policies and plans. It aims at achieving economic efficiency and balanced development. The various County Spatial Plans should be aligned to the policies outlined in the NSP as demonstrated in Figure 2 below.

Figure 2: Policy focus of the NSP



Source: National Spatial Plan, 2015-2045

To actualize the NSP a comprehensive implementation strategy has been proposed that embraces a multiplicity of actors including National Government Ministries, Departments and Agencies, County Governments and the National Land Commission. The strategy proposes the establishment of the following institutions as key in the implementation of the Plan; The National Physical Planning Council, the National Technical Committee and the County Physical Planning Committee

2.4.2 NSP linkage to other plans

The linkage of the National Spatial Plan (NSP) to county and other lower-level plans is key to realization of its aspirations and the successful actualization of these plans. The

NSP provides a spatial framework to ground the Vision 2030 flagships projects and form a basis for coordination of County policies, strategies, measures and plans.

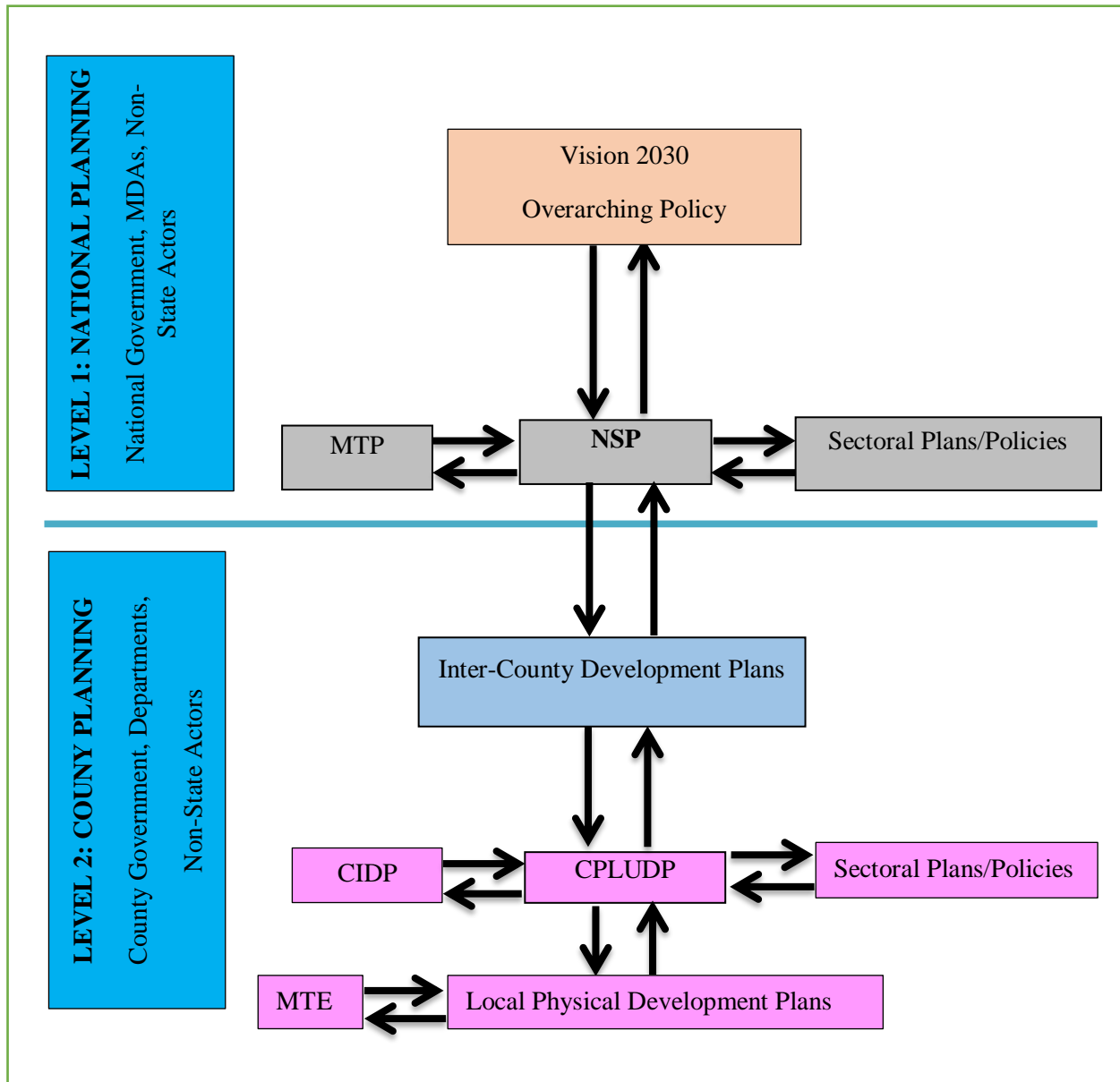
Inter County and County plans take into considerations the policies, measures and strategies of the NSP and implements them actualizing its aspirations.

County Physical and Land Use Development Plans provide a framework where the CIDP draws its programs and projects. The implementation of the CIDP in turn leads to realization of the objectives of the County Physical and Land Use Development Plan.

The graphic below illustrates the country's planning Linkage.

DRAFT

Figure 3: NSP linkages to other plans



Source: The National Spatial Plan, 2015-2045

3 COUNTY PROFILE

3.1 Introduction

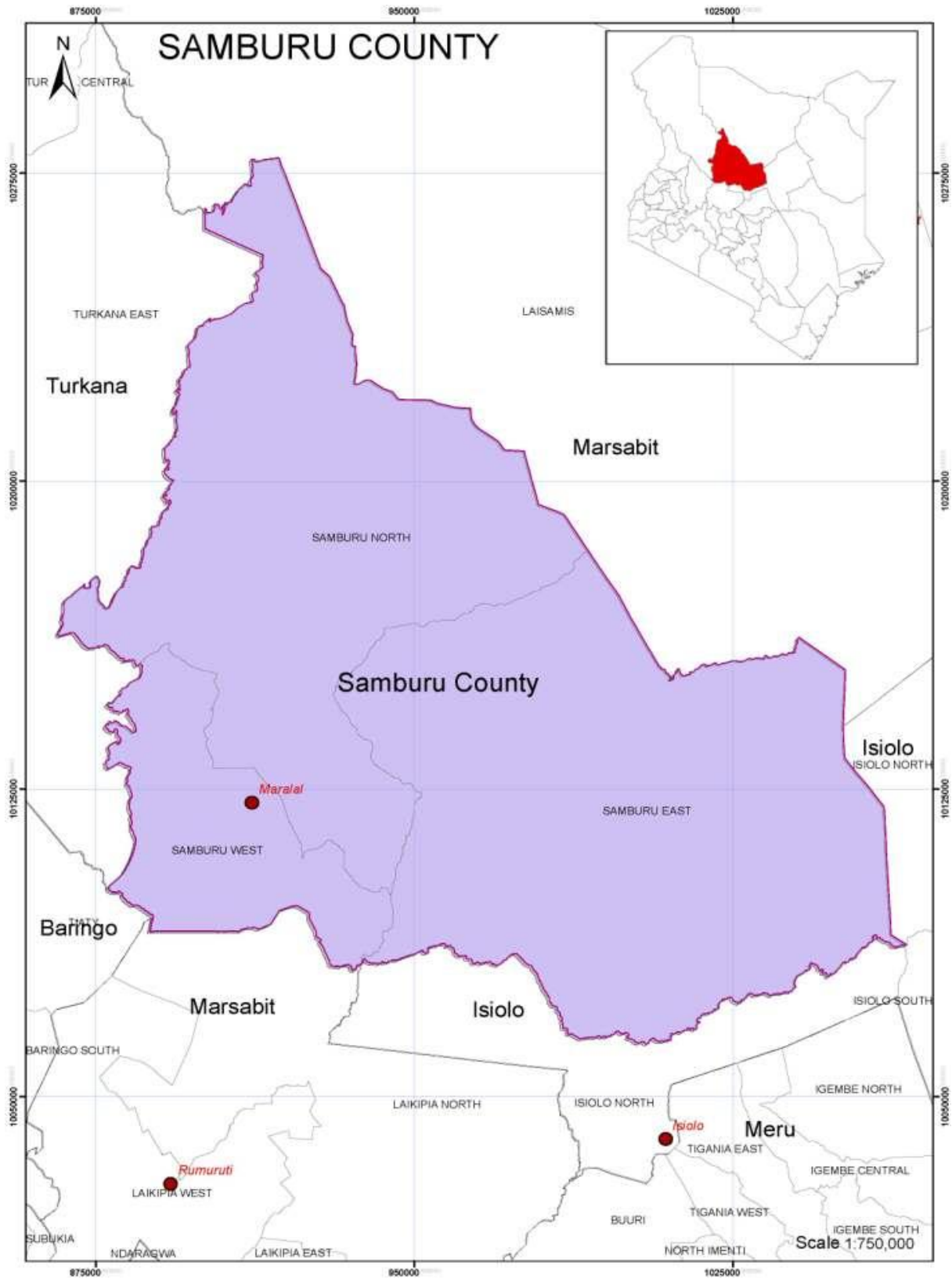
This chapter discusses a set of relevant information about Samburu County. It provides information on the location, size, bio-physical features, socioeconomic status and looks at the comparative advantage of Samburu County as compared to the other Counties in Kenya.

3.2 Location Context

Samburu County lies within the Arid and Semi-Arid parts of Kenya and has an area of 21,022.1 sqkm. It is situated in the northern part of the Great Rift Valley. Samburu is bordered by Turkana to the Northwest, Baringo to the Southwest, Marsabit to the Northeast, Samburu to the East and Laikipia to the South. The county lies between latitudes 0°30' and 2° 45' north of the equator between longitudes 36°15' and 38° 10' east of the Prime Meridian.

The County is administratively divided into three sub-counties, 7 divisions, 14 locations and 106 sub-locations. The sub-counties are Samburu Central, Samburu East and Samburu North and a member of North Rift Economic Block (NOREB).

Map 1: Locational context of the County



3.3 Bio-Physical Context

3.3.1 Topography

The County consists of several highlands, plateaus and lowlands including the famous Suguta Valley. Suguta valley is bounded on both sides by fault escarpments and floored by red clays, boulders and gravel fans. The highest parts of the area is at Kirisia Hills rising to 2000Metres above sea level.

3.3.2 Water Resources

Main water sources in the county constitute surface and ground water. The county has two permanent rivers. There are 35protected springs and 104 boreholes. The Ewaso Ng'iro River flows Northwards about 30km.there are several seasonal riverbeds or 'laggas' which during rainy seasons are filled with runoff water.

3.3.3 Rainfall

More than 75% of the land in Samburu County classified as 'low-potential' rangeland, receiving between (250 – 600 mm) of rain annually. Only 140,900 hectares (7 % of the land area) is medium-to-high-potential land that is suitable for agricultural production receiving (600-900 mm) of rain per year.

3.3.4 Temperature

The county has a mean temperature of 29⁰C with a maximum range being 33⁰C and minimum of 24⁰C.the central plains have the highest temperature while the highland belts are cooler.

3.3.5 Land and Land use Patterns

Land is the most important resource from which the county generates goods and services for the people. The county economy is primarily agro-based where 90% of the population derive its livelihood directly from land. land is classified into various agro-climatic zones which determine the suitability of an area for a particular land use. Samburu is classified as a Low potential (Rangeland) zone. Presently, existing land uses can largely be classified into the following categories;

- i. Livestock farming
- ii. Built up areas
- iii. Conservation

The spread of these uses is uneven across the county due to variations in climatic elements such as temperature, rainfall, humidity, slope, and other physical features.

Nevertheless, changes in land use patterns have been observed in many parts of the county. The main reasons for changes in land use patterns include;

- i. Increasing population
- ii. Rising demand for food and other cash crops
- iii. Increasing urbanization
- iv. Rising standards of living

3.4 Socio-Economic Background

3.4.1 Demography

The county has a total population estimate of 310,320 (50.4% men and 49.6% women) people and a total of 69,735 households with density of 15 persons per sqkm (Kenya National Bureau of Statistics, 2019). It has an average household size of 4.5 person. It is projected that by 2045 the county will have a Population estimate of approximately 962,569 people. The table below shows the population projected to the year 2045 in line with the planning period of the NSP.

Table 2: Summary of population and demography

Year	2019	2020		2025		2030		2035		2040		2045	
Population size	310320	324130		402960		500962		622798		774265		962569	
		M	F	M	F	M	F	M	F	M	F	M	F
		31653 1	32395 4	36873 1	37737 9	42954 0	43961 3	50037 7	51211 1	58289 5	59656 5	67902 2	69494 6
households	69,735	72,838		90,553		112,576		139,955		173,992		216,308	
Area	21,022.1	21,022.1		21,022.1		21,022.1		21,022.1		21,022.1		21,022.1	
Density	15	15.4		19		23.8		29.6		36.8		45.8	

source: State Department for physical planning, 2022

3.4.2 Agriculture

The main crops grown include maize, beans, wheat, barley, pyrethrum and millet. These crops are grown in the highland areas of Kirisia Division due to its fertile soils and adequate rainfall. However, Ninety-two percent (92%) of the County land is rangeland suitable for livestock production.

3.4.3 Physical Infrastructure

Infrastructure is key to the achievement of the National Spatial Plan objectives of global competitiveness, regional balance and optimal utilization of land and other resources. Samburu has fairly developed infrastructure including transport, physical and social

infrastructure. Which have a high potential of economically empowering its People and attracting private investors if well maintained. The sector faces problems regarding poor connection, low coverage, unreliability, high costs, skewed distribution and low/surpassed design. To rectify this situation clear indicative policy, strategies and measures have to be developed and implemented to achieve overall efficiency.

3.4.4 Transportation

The county's total road network length is 1,606.6Km, out of which the tarmac road covers a length of 10Km, improved (graveled) road covers a length of 1,081Km and new (opened) roads cover 515.6Km and most of these are rural access roads and those linking to major urban centres within the county. There are 11 airstrips in Samburu County.

3.4.5 Public Amenities

The County has one level 4 hospital situated in Maralal town. The county also has 15 level three health facilities, 54 dispensaries (47 owned by GoK, 6 faith based and one owned by NGO,) and 15 private clinics in the county. Currently the county has a total of 30 functional Community Health Units accounting for 48% of the total expected units.

3.5 County's Comparative Advantage

3.5.1 Proximity to Lake Turkana Wind Power Project

The project is expected to produce low-cost reliable energy to supplement the National grid. This will promote industrialization of the area and hence boost the economy of the region

3.5.2 Training Ground for British Army

Archers Post in Samburu County is a British Army testing area, used since the 1950s for military exercises. The County can leverage on this to ensure close collaboration with the foreigners to promote employment for the people and improve the livelihoods.

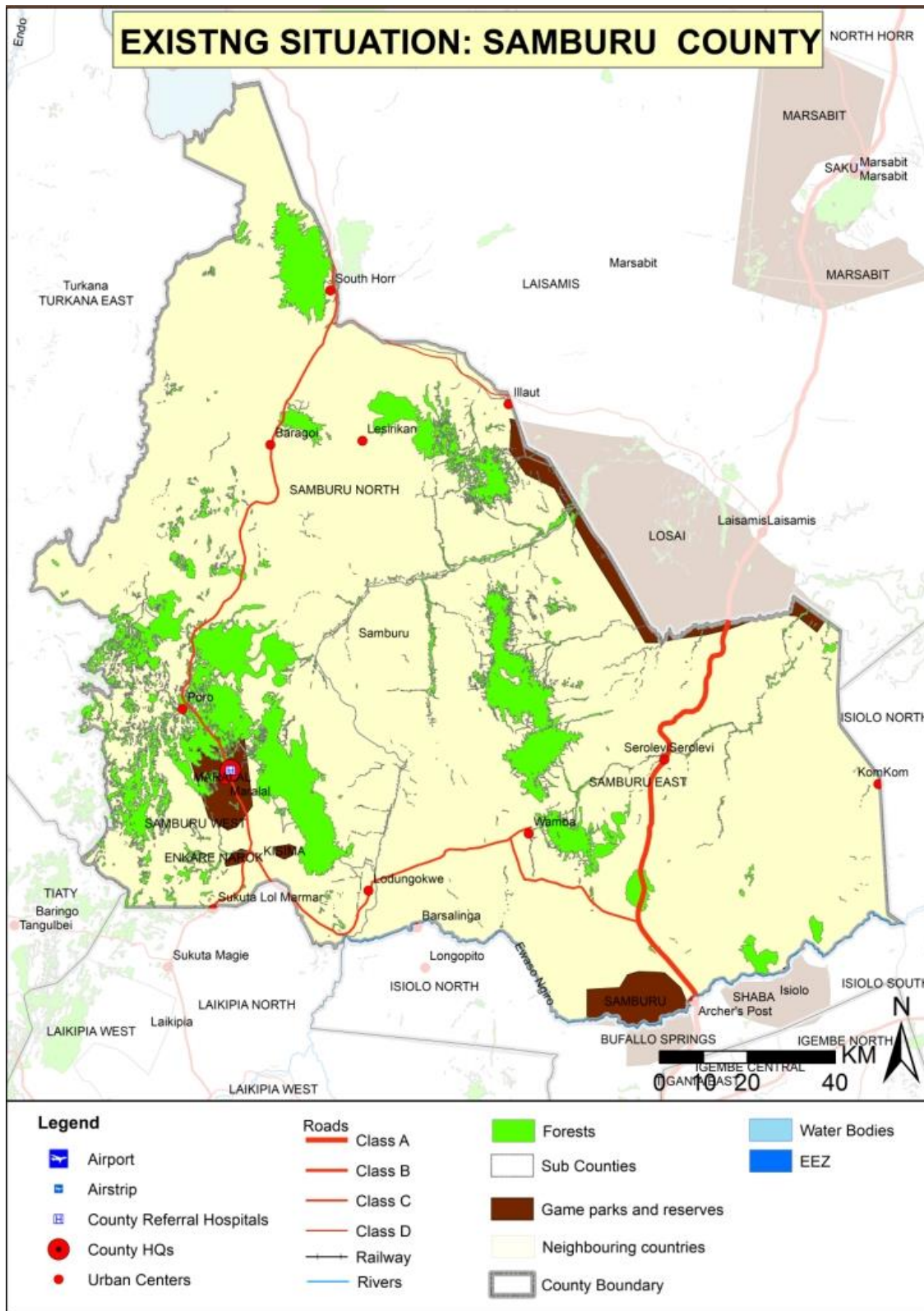
3.5.3 Game Parks and Reserves

The county is part of the northern circuit and is endowed with natural resources such as the Samburu National Reserve, Mt Nyiro and Ndoto Mountains which are potential touristic sites for the county.

3.5.4 Lamu Port South Sudan and Ethiopia Transport Corridor (LAPSSET)

The planned massive capital investment projects under the development of the LAPSSET corridor including the oil storage facilities are expected to boost rapid population growth and spur development in the county. The corridor is set to pass through Samburu and is expected to be one of the driving engines of development in the county.

Map 2: The existing situation in Samburu County



Source: State department for physical planning, 2022

4 DEVELOPMENT STRATEGIES AND POLICY GUIDELINES FOR SAMBURU COUNTY

4.1 County Specific Issues and Development Strategies

This section provides strategies for spatial growth and development of the County by addressing the factors that prevent the County from achieving the intended development goals and objectives.

The development strategies aim at managing the overall development impacts, optimizing use of natural resources, creating a balanced County and transforming rural areas. Specifically, the development strategies have been proposed to address the following aspects of the County's development agenda:

- Managing the national competitiveness
- Optimal use of land and other resources
- Promoting balanced Intra- County development
- Rural development in the county
- Urbanization

The following are detailed NSP sector-specific issues and strategies that apply to Samburu County.

Strategy 1: Managing National Competitiveness

Table 3: County Specific Issues and Development Strategies

Opportunities	Constraints	Strategies
<ul style="list-style-type: none"> • Choice destination for investors and speculators • Member of Frontier Counties Development Council • Potential for green energy due to its proximity to Lake Turkana Wind Power Project • Member of North Rift Economic Block (NOREB) to spur economic development within the region and to foster peaceful co-existence • Archer's Post as a training ground by the British Army • Gazetted forests, wildlife conservancies and mountainous species 	<ul style="list-style-type: none"> • Inefficient transport infrastructure • Over reliance in traditional sources of energy • Insecurity • Inadequate knowledge-based workers • Inadequate tourism support infrastructure. • Disparity in access ICT Infrastructure 	<ul style="list-style-type: none"> • Sensitize and invest in transport infrastructure development • Harness the renewable and green energy sources to increase the energy capacity and reduce the cost • Promote and Invest in Security measure • Encourage locations of resource-based industries where resources are located • Continued investment and improvement of Educational Infrastructure i.e TVTs in should fully participate in the affairs of the bloc. • Strengthen the tourism service industries to leverage on comparative advantages • Encourage the emergence of ICT locations and research-oriented institutions in the county

Strategy 2: Optimizing Land and Natural Resources

Sector: Land Capability (Transition area with ability to support both livestock and crop farming)		
Opportunities	Constraints	Strategies
<ul style="list-style-type: none"> • Abundant land resource for development • Change in land use patterns • Livestock and agriculture potential 	<ul style="list-style-type: none"> • Skewed development patterns • Unsustainable land use practices • Communal land tenure system leading to insecurity of tenure 	<ul style="list-style-type: none"> • Formulate policies to tap the capability and potentials of the county

Sector: Agriculture		
Opportunities	Constraints	Strategies
<ul style="list-style-type: none"> • Favorable climatic conditions to support large scale livestock production throughout the county • Crop farming potential in the South West due to its fertile soils and relative high rainfall • Apiculture (Bee Farming) potential • Location of a National Cereals and Produce Board in Maralal as a Main regional storage facility 	<ul style="list-style-type: none"> • Erratic and unpredictable rainfall patterns • Climate change leading to drought, floods, high temperatures, land degradation • Livestock diseases • Soil degradation and erosion • Increase in pressure on grazing land • Food and nutrition insecurity • Cattle rustling and banditry • Poor and dilapidated transport system connecting the areas 	<ul style="list-style-type: none"> • Exploit/harness potential water resources (underground, surface and rainwater) • Establish the land carrying capacity for livestock • Encourage community ranching to replace pastoralism • Encourage dry land farming methods and plant drought resistant crops • Provide subsidies to promote the use of appropriate farm inputs and technology • Transportation infrastructure in agricultural areas should be improved • Agricultural support infrastructure should be provided to match the function
Sector: Environment (Conservation Area & Protection Area)		
Opportunities	Constraints	Strategies
<ul style="list-style-type: none"> • High potential for ground water harvesting in some areas • Existing environmental policies and regulations • Diverse biodiversity • Presence of various institutions dealing with conservation issues in the County 	<ul style="list-style-type: none"> • Human settlement encroachment to Environmental Sensitive areas • Lack of Enforcement of Environmental Acts • Haphazard sand harvesting • Charcoal burning 	<ul style="list-style-type: none"> • Enforce Development Control-development not permitted in Conservation areas except for Eco-Tourism and Research Purposes. • Enforcement of Environmental Act • Encourage and adopt Modern livestock Farming methods

	<ul style="list-style-type: none"> • Deforestation • Livestock Overstocking • Soil erosion caused by Overstocking and strong winds • Loss of wetland ecosystems • Sand and Dust storms leads to poor visibility 	<ul style="list-style-type: none"> • Strict regulations on Environmental sensitive areas i.e., Wetlands • Provide requisite livestock infrastructure e.g., abattoirs, markets • Sensitize the public in matters of carrying capacity • Exploit tourism potential areas • Intensify forest cover through afforestation, reafforestation and agroforestry of the existing forests
Sector: Natural Resource		
Opportunities	Constraints	Strategies
<ul style="list-style-type: none"> • Green Energy: Solar and Wind-Favorable wind speeds to support production of power. • Presence of gazette and ungazetted forests such as Mathews and Ndoto Forest • Presence of Wildlife conservation areas such as West Gate, Namunyak, Kalama and Samburu National Reserve • Existences of Mineral Resources such as Sapphire and Ruby • Presence of Permanent River; Ewaso Ngiro River 	<ul style="list-style-type: none"> • High costs of exploiting available natural resources e.g., Wind and Solar • Inadequate technology and exploitation infrastructure • Under-utilization of existing resources i.e. minerals • Soil erosion • Loss of forest cover • Invasive tree species • Inadequate geological information on the existence of the minerals and their commercial viability 	<ul style="list-style-type: none"> • Invest in appropriate technology and infrastructure for resource utilization • Optimal utilization of the available resource potential • Undertake further exploration of the available natural resources • Formulate a policy pertaining to the use and protection of the parks and conservancies • Regulate the exploitation of underground water potential • Intensify forest cover through afforestation, reafforestation and agroforestry of the existing forests
Sector: Industrial		
Opportunities	Constraints	Strategies

<ul style="list-style-type: none"> • Existence of mineral deposits such as Sapphire and Ruby • Huge potential for livestock product-based industries • Partnership with Livestock Marketing Association in Archers Post to run a sales yard • Potential for pyrethrum farming has attracted support from Pyrethrum Processing Company of Kenya 	<ul style="list-style-type: none"> • Inadequate information on potential mining opportunities • Low adoption of technology • Inadequate transport infrastructure • Lack of manufacturing industries for livestock products • Price fluctuations of Livestock products • Poor transport linkages to the markets • Lack of value addition support infrastructures and services 	<ul style="list-style-type: none"> • Need for carrying out geological surveys to establish true quantity of mineral deposits • Formulate policy that creates an enabling environment to attract investments in mineral exploration • Invest in exploration of potential mineral reserves • Provide appropriate technology to enhance value addition • Provide adequate, supportive transport and infrastructure • Diversify energy production sources to reduce costs of production and enhance its reliability • Promote the formation of cooperatives and Saccos to advance marketing • Promote assertive marketing campaigns for products both domestically and internationally
Sector: Tourism (Northern Circuit)		
Opportunities	Constraints	Strategies
<ul style="list-style-type: none"> • High potential for Cultural Tourism (traditional beadwork and attire) • Wildlife conservation areas such as West Gate, Namunyak, Kalama and Samburu National Reserve • Existence of Samburu and other several Airstrip 	<ul style="list-style-type: none"> • Untapped tourism potential such as cultural tourism • Underdeveloped tourism sites and products • Poor/inadequate transport and infrastructural facilities • Human-Wildlife (Elephant) Conflict 	<ul style="list-style-type: none"> • Provision of appropriate infrastructure to link the county to other circuits • Revive and Rehabilitate airstrips connecting the circuits • Identify and invest of under-utilized sites

	<ul style="list-style-type: none"> • Poaching • Limited safety and security concerns leading to negative travel advice • Poor marketing strategies to promote tourism • Weak integration of ICT in the development and management of the tourism value chain 	<ul style="list-style-type: none"> • Diversify the tourism products based on potentials i.e., Cultural Tourism • Strict enforcement of the existing regulations for safeguarding protection areas • Enhance security in tourism potential areas • Invest in ICT infrastructure and capitalize on online marketing • Promote domestic tourism by providing incentives and subsidies • Increase our tourism market segment
--	--	--

Sector: Transport

Opportunities	Constraints	Strategies
<ul style="list-style-type: none"> • Implementation of the LAPSSET corridor • Construction of Rumuruti-Maralal Road (A4) • Rapid urbanization • Existence of airstrips located in all sub-counties • Proposed relocation of an oil storage facility in Archers Post 	<ul style="list-style-type: none"> • Most Intra- County Roads are in poor condition. • Transport system not fully integrated • Dilapidated Airstrip • Lack of Non-Motorized and Intermediate Means of Transport (NMIMT) • Missing transportation links • Inadequate or lack of terminal facilities • Increase financial resources for road construction and maintenance 	<ul style="list-style-type: none"> • Upgrading of all the intra-county roads • Integrate transport corridor planning • Improve and expand the existing airstrips • Enforce development control measures within and around airstrips • Incorporate Bus Rapid Transit within the urban areas • Formulate regulations and guidelines to control development along transport corridors

	<ul style="list-style-type: none"> • Encroachment and/ or grabbing of road reserves 	<ul style="list-style-type: none"> • Connect all the county headquarters with proper transportation system • Repossess and revert all illegally acquired land for roads infrastructure • Preserve and secure adequate land for future transport and other related infrastructural Development
--	--	--

Sector: Public Utilities

Sub-Sector	Opportunities	Constraints	Strategies
Water and Sanitation	<ul style="list-style-type: none"> • Financial and technical support from the government and non-governmental organizations in provision of water and sanitation facilities 	<ul style="list-style-type: none"> • Inadequate accessibility to portable water points • Encroachment of human activities into catchment areas • Prevalence of water-borne diseases • Inadequate sanitation facilities in urban and rural areas • Declining of water levels in boreholes, wells and springs due to climate change 	<ul style="list-style-type: none"> • Expansion of existing water supplies in the county • Protection of catchment areas • Investments in water harvesting technologies and storage facilities • Exploit underground water to increase the total supply of water • Appropriate sanitation infrastructure including collection, disposal and treatment system be developed in all urban areas • Promote the reduce, reuse and recycling guidelines
Solid waste management	<ul style="list-style-type: none"> • Existing policies on waste management activities in the County • Private – Public partnership 	<ul style="list-style-type: none"> • Lack of systems of solid waste management • High urbanization rate • None Existent dumping sites • Poorly sited dumping sites 	<ul style="list-style-type: none"> • Construction and upgrading of integrated solid waste • Implement reduce, reuse and recycling guidelines

Sector: Infrastructure (Physical and Social)

Sub-Sector	Opportunities	Constraints	Strategies
Energy	<ul style="list-style-type: none"> • Availability of alternative energy sources- green energy such as Solar, Biomass and Wind • Potential for geothermal energy as it has an estimate of 680 Megawatts at Emuruaenkokolaknear near Lake Lokipi to complement hydroelectric power 	<ul style="list-style-type: none"> • Lack of proper assessment and research on exploitation of green energy • Under exploitation of energy resources • Over-reliance on unsustainable energy sources such as wood fuel • Poor development of power infrastructure 	<ul style="list-style-type: none"> • Renewable energy sources be harnessed, transmitted and distributed (Solar and Biomass) • Formulate a policy to guide and regulate the exploitation use of potential green energy sources by developing standards and promoting research and planning • Use of most appropriate energy consuming equipment to ensure efficient and productive use of energy • Advocate for upgrading of electricity infrastructure
ICT	<ul style="list-style-type: none"> • Increased demand in technological services • Laying of fiber optic network • Existing ICT systems 	<ul style="list-style-type: none"> • Disparity in access to internet services in both urban and rural Areas • Poor Connection Infrastructure • High connection cost 	<ul style="list-style-type: none"> • Mainstream ICT at all sectors to promote service, • Expand the fiber optic network to all urban areas to increase the coverage and data connectivity and increase access for rural population
Sports	<ul style="list-style-type: none"> • Availability of land for infrastructure development • Existing facilities such as Maralal Sports ground • Maralal hosts the International Camel Derby 	<ul style="list-style-type: none"> • Poor management of existent infrastructure • Skewed distribution • Lack of proper repair and maintenance structures • Little modernization and upgrade of sporting infrastructure • Underutilization stemming from little promotion of sports as a potential income earner 	<ul style="list-style-type: none"> • Address imbalances in distribution of sporting infrastructure • Develop sound stadia repair, upgrade and maintenance policies • Encourage private entities to take part in the development and management of sporting infrastructure • Set up talent academies to harness sporting talent throughout the

			country and increase utilization of the infrastructure
--	--	--	--

Strategy 3: Balanced Regional Development

Opportunities	Constraints	Strategies
<ul style="list-style-type: none"> Existing and enabling policy framework i.e., Vision 2030 Development Strategy for Northern Kenya and other Arid Lands Inherent potential includes mining, tourism, green energy generation, livestock and Agro-based industries. Classified as a medium potential region due to its high potential for agriculture through irrigation and livestock keeping. Range land region as it has high potential for large scale livestock keeping Devolution 	<ul style="list-style-type: none"> Under-exploitation of the natural resource potential ie Solar and Wind Energy Inadequate provision and access to infrastructural facilities Insecurity Inadequate geological information on the existence of minerals and their commercial viability Food and nutrition insecurity Regional disparities Inadequate utilization of knowledge and innovation 	<ul style="list-style-type: none"> Establish economic zones in the region according to the potential of every Encourage equitable exploitation and sound management of mineral resources Promote investment in sustainable tourism including eco-tourism Promote industrialization and value addition Promote Irrigation activities for improved productivity in quantity and quality of yield within the potential regions Promote the Utilization of knowledge and innovation.

Strategy 4: Promoting Rural Development

Opportunities	Constraints	Strategies
<ul style="list-style-type: none"> Resource endowment in rural areas (agriculture, large-scale livestock production and tourism) 	<ul style="list-style-type: none"> Weak rural-urban linkages Insufficient and dilapidated infrastructure facilities and services 	<ul style="list-style-type: none"> Develop appropriate transport and infrastructural facilities and services

<ul style="list-style-type: none"> • Enabling policy framework to support rural development e.g. NLUP and Vision 2030 • Implementation and Development of LAPSSET corridor • Human resource (both skilled and unskilled) • Transitional area with poverty levels below 50-70% 	<ul style="list-style-type: none"> • Under exploitation of resources in rural areas • The dispersed nature of the human settlements • Slow adoption of technology • Low productivity 	<ul style="list-style-type: none"> • Promote rural industrialization which includes, rural tourism, mining and Agro-based industries • Promote commercial and large-scale livestock production practices in the weak and transitional cluster of rural areas • Provision of education and training services • Adoption of modern technology • Provision of extension services and incentives to the farmers • Enhance the ASALs climate change adaptation and desertification mitigation • Provide a spatial framework for harnessing natural wealth e.g. renewable energy, from both solar and wind • Promote sustainable land uses that are capable of meeting the rangeland needs • Promote urban containment to reduce effects of urban sprawl into agricultural and rangeland areas.
---	--	--

Strategy 5: Urbanization

Opportunities	Constraints	Strategies
<ul style="list-style-type: none"> • Human Resource (Skilled & Unskilled) • Existing Infrastructure • Development of LAPSSET Corridor expected to spur growth of urban centres • Enabling policy framework • Proposed urban conurbation in Maralal due to its locational advantage to act as an alternative growth area for the region 	<ul style="list-style-type: none"> • Poor implementation of development plans and planning policies • Rapid urbanization rates • Weak rural-urban linkages • Deteriorating infrastructure • Proliferation of informal settlements • Gentrification • Weak and uncoordinated development control and enforcement systems. • Ribbon development • Unbalanced distribution of urban centres • Land and governance issues • Inadequate political will and governance • Weak enforcement of existing legislation • Inefficient solid waste management services 	<ul style="list-style-type: none"> • Enforce, harmonize and regularly review the existing legislative and regulatory instruments • Promote the development of centers as per their potential and population as local, market, rural, urban centers and growth centers • Create an enabling environment for commercial and industrial developers to activate potential development within the urban areas • Provide alternative areas for development of urban centers • Strengthen urban-rural linkages through provision of integrated transportation and communication system • Plan and provide an integrated waste management system • Strengthen Governance and harmonize sectoral policies, legislation and regulations

4.2 NATIONAL SPATIAL PLAN POLICY GUIDELINES AND MEASURE FOR SAMBURU COUNTY

This section seeks to provide the spatial policy guidelines and measures aimed at promoting the achievements of the objectives of the National Spatial Plan using its guidelines. They aim at enhancing global and national competitiveness and economic efficiency, optimizing the use of land and natural resources, promoting regional balanced development and conservation of the environment.

These policies are supported by a wide range of measures which spell out the specific actions to be undertaken to actualize the policy intentions. The policies shall ensure that the County is nationally competitive as an investment destination, especially in emerging sectors such as the ICT. The policies will also be implemented by the County government’s agencies responsible for planning and development control as well as the authorities responsible for land administration.

The following are the policies and measures specific to Samburu County.

Table 4: NSP policy guidelines and measures for the county

No	Thematic Area	Policy Guidelines	Measures
1.	Resource Potential Growth regions Region 2: Irrigated agriculture and livestock production potential	<ul style="list-style-type: none"> • Enhanced agricultural and food production • Investment in physical and social • Infrastructure • Environmental protection and conservation 	<ul style="list-style-type: none"> • Infrastructure provision to support value addition initiatives and human settlement • Rural development through provision of infrastructure • Environmental protection • Enhanced agricultural and food production • Investment in physical and social infrastructure • Mineral mapping and exploitation

2.	County Spatial Structure Linkage	National Spatial Plan as a basis for preparation of lower tier development plans	<ul style="list-style-type: none"> • All Inter-County, County and Local physical/spatial plans shall be guided by the objectives and policies of the NSP
3.	Enhancing National Competitiveness	The selective concentration concept shall be adopted for the planning and location of urban based economic activities to leverage on national competitiveness	<ul style="list-style-type: none"> • Concentrate urban based economic activities in selected urban areas to spur economic development and to exploit the natural resource endowments • Prioritization in the preparation of Spatial Development Plans to guide development in the selected national growth areas
		The major urban centres shall be planned and provided with appropriate infrastructure	<ul style="list-style-type: none"> • Enhance the Livability Index for urban areas • Improve the transport infrastructure • Provide appropriate infrastructure in the form of reliable energy, water, sanitation and ICT
		Land and natural resources of the less developed areas shall be utilized optimally and sustainably	<ul style="list-style-type: none"> • Encourage the transformation from traditional farming and livestock keeping methods to modern practices • Identify and develop the tourism potential within the northern circuit • Explore and exploit the mineral, energy and water potentials • Provide transportation networks and other infrastructure
		Efficiency of the transportation network shall be enhanced to take advantage of the strategic location and position of the country	<ul style="list-style-type: none"> • Maximize the presence of LAPSSET corridor to spur economic • Prepare Spatial development plans

		Enhanced cooperation in spatial and economic planning with member states of the East African Community (EAC) and the Common Markets of East and Southern Africa (COMESA)	<ul style="list-style-type: none"> The planning of trans boundary resources, transport corridors and infrastructure as well as border urban areas shall be undertaken jointly
4.	Modernizing Agriculture Agro climatic zones IV, V and VI (rangelands)	<ul style="list-style-type: none"> Enhanced large scale livestock production Investment in physical and social Infrastructure 	<ul style="list-style-type: none"> Prepare County spatial plans to guide and promote the development of large-scale livestock productions Prioritize provision of requisite infrastructure to support ranching Modernize livestock keeping Consider appropriate rangelands management practices
		Explore the irrigation potential of the region through promoting investing in irrigation agriculture for high value crops	<ul style="list-style-type: none"> Existing irrigations schemes shall be rehabilitated and expanded Research be undertaken to identify the irrigation potential Promote sensitization campaigns
5.	Diversifying Tourism (Northern circuit)	Promote diversification of tourism	<ul style="list-style-type: none"> Northern Circuit to be plan and develop the circuit to offer; safari and wildlife, cultural and heritage, archeological and historical, filming ecotourism and adventure tourism products
		Provided appropriate Tourism support infrastructure and facilities	<ul style="list-style-type: none"> Formulate planning regulations and standards to guide tourist specific infrastructure and facilities Upgrade the existing tourism facilities and Infrastructure Prepare and implement an integrated Tourism Transportation Master Plan

			<ul style="list-style-type: none"> • Provide and upgrade the ICT infrastructure to support tourism
		Tourist attraction areas and sites shall be conserved and protected	<ul style="list-style-type: none"> • Prepare subject plans for the wildlife migratory and dispersal corridors and wildlife habitat as a unit • Prohibit the location of incompatible land use activities • Identify and map potential eco-tourism development sites • Strictly regulate developments within the tourist attraction sites • Protect wildlife watering points
		Enhance tourism Governance	<ul style="list-style-type: none"> • Prepare and implement National Policies on land use, wildlife and tourism • Enhance tourism dedicated security to the tourism sector • Undertake eco-tourism awareness campaigns • Develop standards for eco-tourism establishments
		Prepare Spatial Development plans to guide implementation of the flagship projects of the tourism sector	<ul style="list-style-type: none"> • Prepare Samburu Resort City local physical development plans. • Prepare Ecosystem area plans for all parks and reserves. • Prepare plans for the cultural heritage sites

6.	Managing Human Settlements	Development control in Existing urban areas to curtail encroachment on agricultural and livestock farming land	<ul style="list-style-type: none"> • Develop urban centres as intermediate centres between the rural and the principal towns. • Prepare local physical development plans to define the urban growth limits for the principal urban centres. • Enforce strict regulations and justifications on development control processes.
		Develop and support Alternative urban areas to promote balanced regional development and spur growth	<ul style="list-style-type: none"> • Develop market centres as intermediate centres between the rural and the principal town • Prepare local physical development plans to define the urban growth limits for the principal urban centres • Enforce strict regulations and justifications on development control processes • Intensify the supply of urban infrastructure within the area contained to make it attractive for investment
		Rationalize and support Rural growth centres to act as central places and settlements clustered to free the rich agricultural and livestock farming land	<ul style="list-style-type: none"> • Provide basic services such as extension services, health facilities, markets, sanitation, water, power and education • Undertake sensitization and awareness campaigns on the need to conserve agricultural land • Progressively link growth centres by means of secondary roads • Promote sectors such as agriculture that have potential to stimulate rural development • Incorporate disaster management and mitigation in planning of rural settlements

		<p>Develop Human settlements in line with environmental and natural resources conservation to improve living conditions</p>	<ul style="list-style-type: none"> • Map out and prohibit development in environmental sensitive areas • Plan and provide an integrated waste management system • Deliberately provide adequate and functional open spaces in urban places • Prescribe planning standards for open/green space on private development • Encourage non-motorized transport (NMT) and re-introduction of public transport in urban centres
		<p>NSP advocates for the provision of an efficient, reliable and effective transport system for human settlements</p>	<ul style="list-style-type: none"> • Integrate land use and transportation planning to encourage development patterns • Establish an efficient mass transit public transportation system for Samburu • Establish an effective transport management system • Improve the road conditions and expand the linkages to human settlements • Integrate NMT with existing transport infrastructure • Incorporate the concept of green energy in transport systems planning and redevelopment • Prepare a transportation strategy for each urban area or city
		<p>The management and governance of Human Settlements particularly the urban areas shall be improved</p>	<ul style="list-style-type: none"> • Build institutional capacities of the urban areas management boards • Integrate technology in management of human settlements

			<ul style="list-style-type: none"> • Coordinate and strengthen development control mechanisms • Provide adequate human resource and improve their capacity in management of human settlements in the sectors • Conduct research into migration trends to inform effective planning and provision of human settlements • Enable public private partnerships in the provision of housing
		<p>Advocate for upgrading of the existing settlements and forestalling of new informal settlements</p>	<ul style="list-style-type: none"> • Encourage redistribution of urban income through integrated development planning encompassing social, economic and physical factors • Prepare Local Physical Development Plans for purpose of renewal and/or redevelopment of the informal settlement • Formulate a housing policy that will focus on providing affordable and accessible housing • Ease the process of issuance of ownership documents to the legal owners in order to encourage formal developments • Enforce development control regulations and adherence to building code and standards • Enhance coordination of donor agencies activities within informal settlements

		Peri-urban development shall be managed and controlled to contain urban growth within its limits and protect rural land uses	<ul style="list-style-type: none"> • Formulate policy for urban containment and densification • Formulate and implement planning legislation on peri urban planning and management • Institute sanctions on idle land to encourage productive and sustainable land utilization • Create green belt buffer zones to define the urban and peri-urban areas
7.	Conserving the Natural Environment	All environmentally sensitive areas shall be protected and utilized in a sustainable manner (Wetland Ecosystems)	<ul style="list-style-type: none"> • Prepare integrated wetland resource management plans • Rehabilitate and restore the degraded wetlands and river banks
		All environmentally fragile areas shall be conserved and utilized in a sustainable manner (ASALs)	<ul style="list-style-type: none"> • Develop and implement an Integrated Land Use (Development) Plan for the ASALs related challenges • Promote integrated natural resource management • Mainstream dry land issues into all national development plans and policies • Involve and empower communities in the management of ecosystems • Gazette and manage emergency drought reserve areas • Mainstream climate foresight and climate adaptation into planning • Explore opportunities and develop appropriate mechanisms through • Protect and increase forest cover, riverine vegetation and critical water catchment areas in the ASALs

		<p>All environmentally sensitive areas shall be protected and utilized in a sustainable manner (Mountain Ecosystems)</p>	<ul style="list-style-type: none"> • Develop and implement strategies and action plans for sustainable management • Promote integrated watershed management and alternative livelihood opportunities • Adopt appropriate land use planning and watershed management practices for sustainable development • Ensure all water catchment areas are zoned and managed as protected areas
		<p>Government agencies shall integrate environmental concerns in policy formulation, resource planning and development processes</p>	<ul style="list-style-type: none"> • Waste Management and Pollution Control • Encourage the participation of local communities in conservation and management of the environment • Jointly prepare and implement harmonized inter-county plans • Devise means to measure the value of unexploited natural resources • Implement the National Climate Change Strategy and the National Climate Change Action plan • Strengthen Environmental Governance
		<p>Mainstream Community participation in the protection and conservation of natural resources</p>	<ul style="list-style-type: none"> • Sensitize communities living around the natural resources • Develop mechanisms for sharing benefits accruing from the natural resources • Identify and map all disaster-prone areas for sustainable management
		<p>County Physical Planning departments shall mainstream climate change into their planning processes</p>	<ul style="list-style-type: none"> • Build and strengthen research capacity on climate change and related environmental issues • Promote water conservation measures

			<ul style="list-style-type: none"> • Promote growing of drought tolerant traditional high value crops • Supporting sustainable livelihoods in drought prone ASALS • Develop and promote the use of green energy
8.	Integrating the National Transportation Network	An integrated and functional transport system for the national and urban areas shall be developed	<p>Road Transport:</p> <ul style="list-style-type: none"> • Link Local roads to the National transportation corridors i.e. LAPSSET corridor. • Provide access and linkage, between county Headquarters.
		Develop an efficient and affordable Mass Public Transport system	<ul style="list-style-type: none"> • Provide public transport system for the principal town of Samburu • Adopt transit-oriented development in the planning and development of all public urban transport • Design and develop integrated transport networks • Establish a comprehensive transport management information system for all transport modes
		Develop an urban transport policy that facilitates an integrated, balanced and environmentally sound urban transport system	<ul style="list-style-type: none"> • Incorporate an integrated transport network in county and urban development plans • Plan and develop satellite towns to complement and decongest major urban areas

			<ul style="list-style-type: none"> • Develop a Samburu County transport policy to regulate planning and management of public transport
9.	Providing Appropriate Infrastructure	Safe, adequate, reliable and affordable electricity for both urban and rural settlements shall be provided	<ul style="list-style-type: none"> • Mainstream and enforce green energy options in the design of buildings • Support the flagship projects that are geared towards increasing electricity supply from both renewable and non-renewable sources
		Expansion and improvement of water reticulation systems	<ul style="list-style-type: none"> • Construct and rehabilitate water supply systems • Incorporate water provision in all physical development plans • Restore all the water towers. i.e. Mt. Ndoto
		Promote a globally competitive, accessible and affordable higher education, training and research facilities	<ul style="list-style-type: none"> • Develop and upgrade physical infrastructure in all higher education institutions to increase their capacity • Mainstream ICT in Education facilities
		Establish a network of functional, efficient, safe, accessible and sustainable county health infrastructure	<ul style="list-style-type: none"> • Increase the utilization of services at lower levels of the health services • Improve preparedness and response to emergencies and disasters • Modernization of infrastructure and hospital equipment at Samburu County Hospital
		Promote appropriate, quality, efficient and cost-effective ICT infrastructure	<ul style="list-style-type: none"> • Promote the development and upgrading of ICT Infrastructure

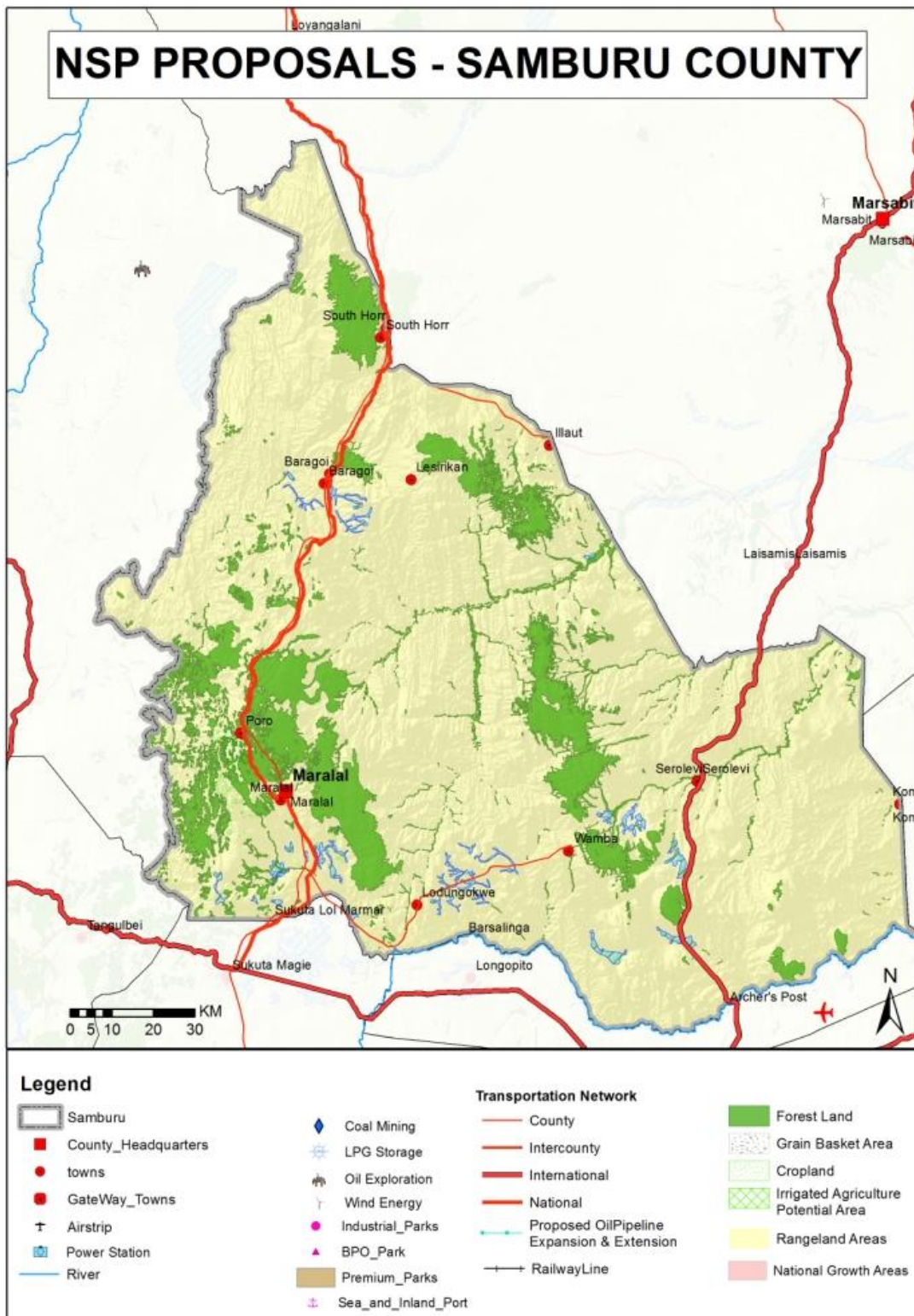
			<ul style="list-style-type: none"> • Mainstream use of ICT in all levels of government and the private sector (e-government)
		Promote the expansion of sewerage systems and waste management facilities	<ul style="list-style-type: none"> • Service all urban settlements by a centralized sewerage treatment system and solid waste disposal facilities • Apply appropriate technology solutions to sewerage and waste treatment • All spatial plans to make provision for development of sewer systems and treatment works and solid waste disposal sites • Enactment of laws at County levels to incorporate private public partnerships in infrastructure investments • Undertake rehabilitation of storm water drainage systems in all urban areas
		Plan, develop and maintain/rehabilitate the Sporting infrastructure	<ul style="list-style-type: none"> • Establish County Sports Talent Centers • Rehabilitate county stadia to international standards
10	Towards a Rapidly Industrializing County	Promote cluster development strategy to focus on proximity to raw materials and markets of region-specific products	<ul style="list-style-type: none"> • Concentrate urban-based industries • Mineral-based industries to be located in-situ where the minerals are found • Locate cottage industries and crafts in-situ • Promote value addition in processing of local produce
		Identify, plan and service Specific sites for industrial development	<ul style="list-style-type: none"> • Plan and set aside land for industrial development in every county • Integrate the industrialization process and environment conservation

			<ul style="list-style-type: none"> • Provide an integrated, efficient, reliable and sustainable transport infrastructure • Increase availability of clean water and improve sanitation • Prepare an integrated waste management framework
		Promote supply of adequate and affordable energy supply for the industrial sector	<ul style="list-style-type: none"> • County government to advocate for provision of reliable energy infrastructure by National government • County Government to promote the adoption of energy efficient technologies

DRAFT

The map below depicts some of the proposals highlighted in the Policy measures above

Map 3: NSP Proposals for Samburu county



Source: State Department of Physical Planning, 2022

5 IMPLEMENTATION AND ADOPTION OF THE GUIDELINES

5.1 Introduction

The implementation framework identifies activities and further ties them with responsible actors, resources and timeframes adequate for their execution. It constitutes a deliberately established method, means or system of ensuring that the policies, strategies and measures outlined in the guidelines are continuously and consistently executed to achieve their objectives.

To effectively implement the guidelines, the various sectors, actors and levels of planning have been identified and have to work together and the mandate of the sectors at the National and County levels of planning have to be integrated.

5.2 Implementation Channels

The County Specific Guidelines will be implemented through various approaches including:

1. Preparation of spatial plans to integrate and conform to the proposals of the County Guidelines. The plans include:
 - Inter-County Physical and Land Use Development Plans for Metropolitan regions, conservation zones, river basins, water towers, coastal ecosystems, trans-boundary resource areas and transport corridors, among others.
 - County Physical and Land Use Development Plans.
 - Local Physical and Land Use Development plans for Cities, Urban areas, special area plans, subject plans and detailed neighbourhood plans, among others.
 - Sectoral plans
2. Integration of the guideline policies, strategies and measures into the County sector plans, programs and projects. Ministries, Departments and Agencies (MDAs), County and National Departments identified in the plan to administer the policies, strategies and measures are required to translate them into action plans, programmes and projects and to include them in their subsequent sector plans.
3. Formulation of policies, regulations and standards to guide development control

5.3 Implementation Framework

The implementation of the various policies, strategies, measures, programmes and projects under these Guidelines will involve a wide range of actors. It will require a coordinated approach and partnership between the National and County Governments and non-state actors. It may require re-engineering of institutions and a number of actors to undertake the implementation through a harmonized approach.

The National Spatial Plan identified a multi-leveled framework for implementation of the plan that incorporates all levels of actors. In this regard, the institutions identified in the NSP to undertake implementation of the plan at County-level shall also be mandated to ensure implementation of this Guidelines.

The following are the Institutions mandated to ensure implementation of the County Specific guidelines;

5.3.1 County Physical Planning Committee

The role of the County Planning Committee shall be to ensure aspirations of the guidelines are articulated in preparation of the County Spatial Plans, County Integrated Development Plans and Local Physical and Land Use Development Plans.

The composition of this committee consists of;

- i. The Governor who will be the Chairperson,
- ii. the Deputy Governor,
- iii. the County Executive Committee Members from various sectors
- iv. Directors from various relevant County Departments including Lands and Physical Planning, Economic planning, Agriculture, Industrialization, Tourism, Environment, Transport and Infrastructure

The functions of the committee include;

- 1) To promote effective integration between physical, economic and sectoral planning within the framework of county development policies.
- 2) To provide policy guidance for the implementation of strategic spatial projects
- 3) To ensure that the guidelines policies and measures are mainstreamed in the various county plans.
- 4) To mobilize resource for implementation of the Guidelines.

5.3.2 County Planning Unit

The technical Unit shall provide technical support to the various implementing County departments on issues relating to physical planning.

The CPU shall;

- i. Monitor the Implementation of the guidelines.
- ii. To disseminate components of the guidelines to the various county departments.
- iii. Update the County Physical Planning Committee on a regular basis on the implementation of the guidelines.

The County Director of Physical Planning shall be responsible for preparation of an annual state of planning report which shall among other things appraise the status of implementation of the guidelines.

5.3.3 National Land Commission

The National Land Commission shall play its oversight role in land use planning to ensure efficient implementation of the NSP and the guidelines. Other functions of the Commission in the implementation of the NSP and the guidelines include the following:

- To formulate mechanisms and parameters for monitoring and overseeing land use planning.

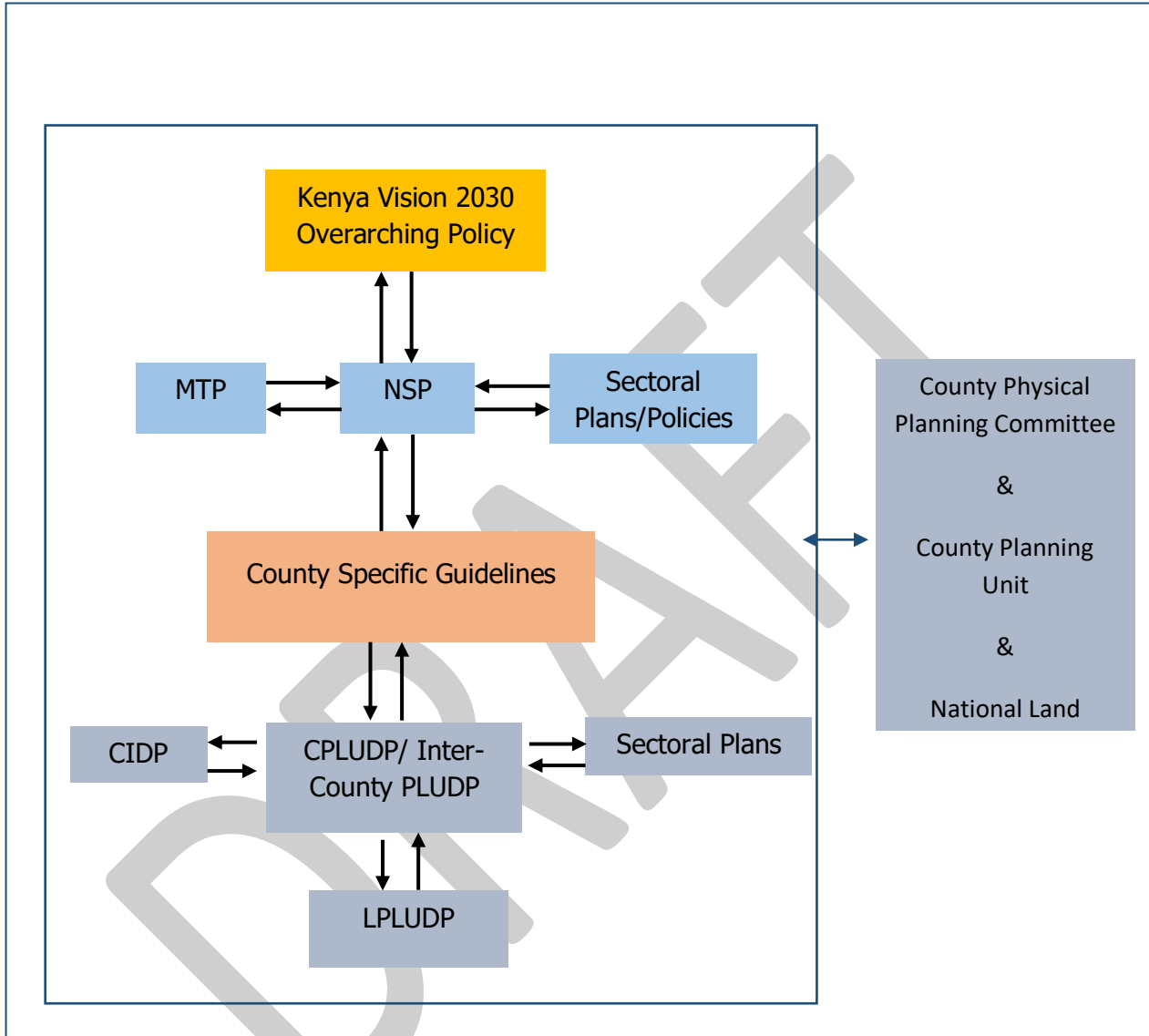
- i. To ensure that relevant planning authorities carry out their functions as required by law.
- ii. To make recommendations for improvements of the planning systems in the county.
- iii. To mobilize resources to support physical/land use planning.

5.4 Monitoring and Evaluation

Implementation of the guidelines will be monitored and evaluated to measure both outputs and outcomes and ensure that the intended actions are implemented in a timely manner. To facilitate attainment of the objectives of the guidelines, performance indicators will be developed by the County Physical Planning Department for efficient monitoring. Periodic reports will be prepared in relation to progress being made in their implementation.

The graphic below illustrates the implementation structure for County Specific guidelines.

Figure 4: NSP Implementation Structure



Source: State Department for Physical Planning, 2022

5.5 CONCLUSION

The application of these guidelines will be undertaken by a number of actors and hence the need for a coordinated approach. The lead agency will be Samburu County Government which will be responsible for implementing various county specific initiatives proposed by the guidelines.

The National Government, County Government of Samburu, the private sector and the general public will be critical in actualizing the objectives of these guidelines. The County Physical Planning Committee shall develop a communication strategy to enhance the synergies.

The National Department of Physical Planning shall undertake sensitization, training and capacity building of the County Government and National Government institutions and agencies that will be involved in the implementation of these guidelines. Special attention will be given to the County physical planning units, as they will be expected to provide technical expertise in the implementation of the County specific policies and strategies.

DRAFT