



NATIONAL SPATIAL PLAN IMPLEMENTATION GUIDELINES FOR SIAYA COUNTY



© 2022

Foreword

Under the Fourth Schedule of the Constitution of Kenya 2010 on the distribution of functions, Part 1 (21) and (32) the National Government is charged with the responsibility of formulating general principles of land planning, Policies and guidelines, coordination of planning by the counties, capacity building and technical assistance to the counties. On the other hand, Part 2(8) allocates the function of county planning and development to County Governments.

The State Department for Physical Planning in the Ministry of Land and physical planning prepared the National Spatial Plan (NSP) in response to the vision 2030 requirement to guide the spatial development of the country over a period of 30 years beginning in 2015. The Plan is an important milestone not only for the Ministry but also for the country having been identified as a flagship project under the Kenya Vision 2030 as one of the foundations for the country's socio-economic transformation

The National Spatial Plan covers the entire territory of Kenya and defines the general trend and direction of spatial development for the country. It aims at achieving an organized, integrated, sustainable, and balanced development of the country by providing a framework for better national organization and linkages between different activities within the national space.

The NSP provides strategies and policies to facilitate sustainable exploitation of the huge potential the country possesses for agriculture, tourism, energy, water, fishing, and forestry. It is expected to reduce regional inequalities that have existed by ensuring that these regions are no longer perceived as low potential but as differently endowed.

In order to implement the plan, the counties were expected to play a key role by mainstreaming strategies, policies, and measures identified in NSP into the county spatial planning systems. These guidelines are therefore a tool for enhancing this critical path to effectively achieve its objectives. They will provide a direction for development planning by the counties as they discharge their responsibility of preparing county and local plans. The Guidelines have identified planning policies, strategies, and measures that plans at the county level are expected to mainstream and propagate. The policies address among

others, the protection of rich agricultural land, development imbalances, conservation of environmentally sensitive areas, urban containment, and promotion of industrial development.

The guidelines provide direction on the existing potentials, the opportunities, the constraints(challenges) inhibiting harnessing them, the strategies to apply, respective policies required, and the necessary measures to achieve optimal productivity, sustainability, efficiency, and equity in the use of county land resources.

The guidelines are an opportunity on how best to refocus, vary and complement areas that require different approaches in order to respond to country-specific needs and promote the livelihoods of their people while contributing to the national aspirations of vision 2030, regional objectives of the Africa Agenda 2063, and international targets of sustainable development. The refocusing will also be handy in reviewing and making decisions on NSP which is due for review in 2025.

DRAFT

PREFACE

The National Spatial Plan recognized that Kenya is greatly endowed with massive and diverse resources distributed over the national space that require an integrated and coordinated approach. The plan outlined policies and strategies aimed at optimizing the country's potential while mitigating the challenges. County Specific Guidelines will provide a planning framework for the integration of the National Spatial Plan into the county spatial planning system.

They form clear statements of how the National Spatial Plan is linked to inter-county, county, and lower-level county plans and provide clarification on the anticipated sustainable development outcomes of implementing the plan. The guidelines are intended to link the NSP strategies and policies to the county's planning, programs, and projects.

The county governments will adopt, develop and implement their plans based on the policies, strategies, and measures articulated in the NSP. The realized county plans are expected to guide, harmonize, and facilitate development within each county hence contributing to the overall implementation of NSP. The Guidelines will also form an efficient compass and monitoring tool for national and county governments to jointly pursue sustainable planning and appropriate implementation mechanisms.

It is imperative that as a country, we prioritize the implementation of this strategic document so as to promote balanced development and competitiveness within and across the 47 counties. For the country to be globally competitive, we need to balance development across the country and promote optimal utilization of land and land-based resources as well as cultivate an integrated approach in addressing the intertwined challenges of regional imbalances/inequalities, rural development, underutilization of the available resources, urbanization, environmental degradation, and inefficient transportation.

TABLE OF CONTENTS

1. INTRODUCTION	1
1.1 Background	1
1.2 Purpose	2
1.3 Objectives.....	2
1.4 Scope	2
1.5 Justification.....	3
1.6 Application.....	4
1.7 Process of preparing the Guidelines.....	4
1.9 Key Principles.....	7
2. THE POLICY, LEGAL AND PLANNING FRAMEWORK FOR THE GUIDELINES	8
2.1 Constitutional Framework	8
2.2 Policy Framework	8
2.2.1 Sessional Paper No.10 of 2012-The Kenya Vision 2030	8
2.2.2 Sessional Paper No. 1 of 2017- National Land Use Policy	8
2.3 Legal Framework.....	9
2.3.1 The Physical and Land Use Planning Act, 2019	9
2.3.2 County Governments Act, 2012	9
2.3.4 Urban Areas and Cities (Amendment) Act, 2019	9
2.3.5 Environmental Management and Coordination (Amendment) Act, 2015.....	9
2.3.6 National Land Commission Act, 2012	9
2.4 Planning Context.....	10
2.4.1 National Spatial Plan (NSP)	10

2.4.2 NSP linkage to other plans	11
3. COUNTY PROFILE	13
3.1 Overview	13
3.2 Location Context	13
3.3 Bio-physical context	15
3.4 Social-Economic Status	15
3.4.1 Population and Demography	15
3.4.2 Economic Activities	16
3.4.3 Physical Infrastructure	16
3.4.4 Public Utilities.....	17
3.5 Comparative Advantage.....	19
4. DEVELOPMENT STRATEGIES AND POLICY GUIDELINES FOR SIAYA COUNTY	20
4.1 County Specific Issues and Development Strategies	20
4.2 National Spatial Plan Policy Guidelines and Measures for Siaya County	30
5. IMPLEMENTATION AND ADOPTION OF THE GUIDELINES	39
5.1: Overview	39
5.2 Implementation Approaches	39
5.3 Implementation Framework.....	40
5.3.1 County Physical Planning Committee.....	40
5.3.2 County Planning Unit (CPU).....	41
5.3.3 National Land Commission	41
5.4 Monitoring and Evaluation	42
5.5 Conclusion.....	43

List of Tables

Table 1: Targeted Users of the Guidelines	5
Table 2: Population Projection to the year 2045.....	15
Table 3: County Specific Issues and Development Strategies	21
Table 4: Policy Guidelines and Measures	30

List of Maps

Map 1: Location context of Siaya County	14
Map 2: The Existing Situation in Siaya County.....	18
Map 3: NSP Proposals for Siaya County	38

List of Figures

Figure 1: The Scope of the Guidelines	3
Figure 2: Policy focus of the NSP	10
Figure 3: National Spatial Plan Linkage to other plans	12
Figure 4: Implementation structure of the guidelines.....	42

1. INTRODUCTION

1.1 Background

The County Guidelines set out policies, strategies and measures that will guide the long-term spatial development of the county for a period of 30 years. They cover the entire county and defines the general trend and direction of its spatial development.

The guidelines have been developed in line with the four thematic areas as outlined in the NSP. They provide a guide to the Planning Authority at the county on how to incorporate the NSP policies, strategies and measures during the preparation of County Spatial Plans and other lower level plans like the Local Physical and Land Use Development Plans consequently implementing the NSP.

The NSP County Specific implementation guidelines summarize the County's existing potentials and opportunities, the constraints (challenges) inhibiting harnessing of the potentials, the applicable strategies and respective policies required, and the necessary measures to achieve optimal productivity, sustainability, efficiency and equity in the use of the county land resources. They act as a reference point

1.2 Purpose

The purpose of the County Specific Guidelines is to provide a planning framework for mainstreaming of the National Spatial Plan to the County spatial planning system.

The guidelines are intended to assist the County enhance the implementation of the NSP by linking the proposed county specific policies, strategies and measures into the County plans, programs and projects while putting measures in place for achieving them. The guidelines inform preparation of various County Physical Plans such as the County Physical and Land Use Development Plans.

For optimal implementation of these plans, a County Integrated Development Plan (CIDP) is essential since it is a sectoral and budgetary based plan that draws its implementation programs and projects from the County Physical Plans.

1.3 Objectives

The guidelines provide policies, strategies and measures to deal with challenges of regional imbalances/inequalities, rural development, underutilization of the available resources, urbanization, environmental degradation and inefficient transportation.

Specifically, the objectives are;

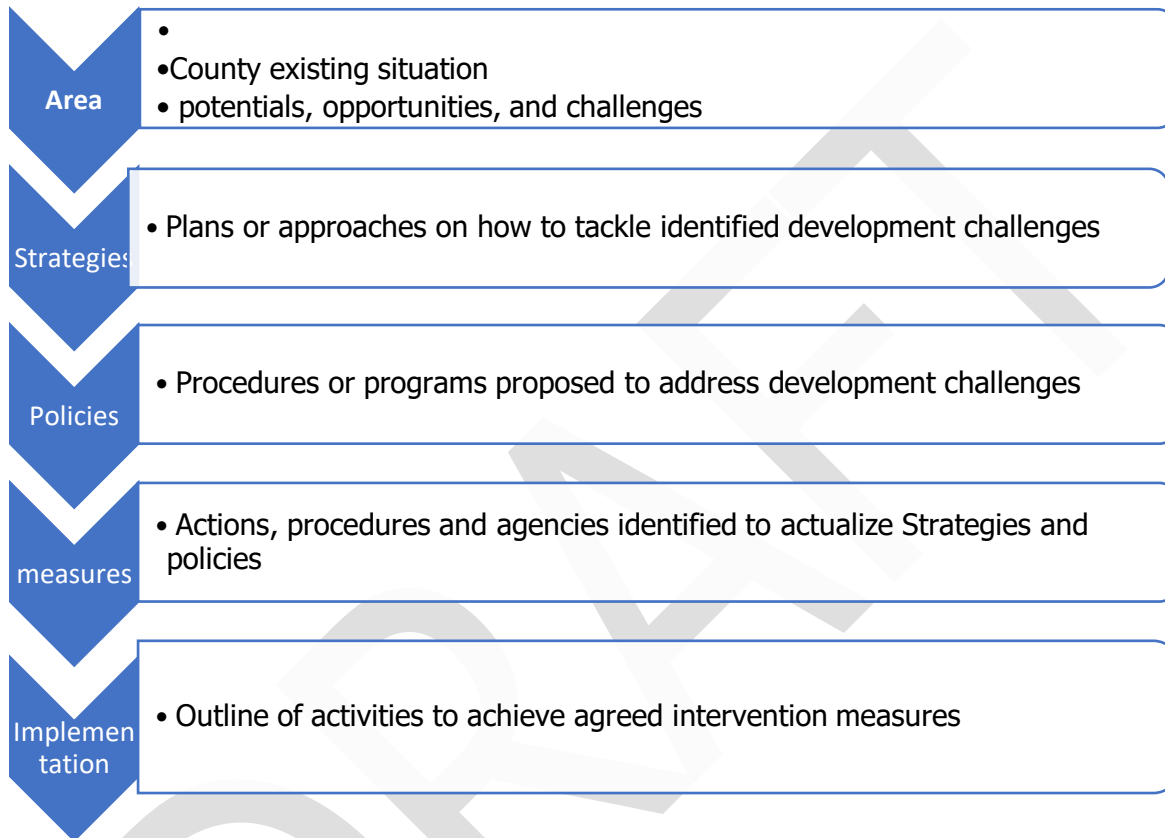
1. To sensitize the County on the provisions of the NSP
2. To promote synergy between National and County planning
3. To guide the County, implement the NSP
4. To identify the roles of the different actors in the implementation of the NSP.

1.4 Scope

The guidelines comprise policies, strategies and measures specific to Siaya County covering approximately 2530 km². The guidelines highlight the County's existing potentials and opportunities, the constraints (challenges) inhibiting harnessing of the potentials, the applicable strategies and respective policies required, and the necessary measures, actions, approaches, plans and procedures prescribed to achieve optimal productivity, sustainability, efficiency and equity in the use of the county's land resources

and an outline of activities to execute agreed interventions as captured in the National Spatial Plan, as indicated in Figure 1 below. These guidelines are effective up to the year 2045.

Figure 1: The Scope of the Guidelines



Source: State Department for Physical Planning, 2022

1.5 Justification

Since the approval and launch of the NSP, its implementation has been undertaken in an uncoordinated manner hence the guidelines will provide a standardized approach for all Counties. The guidelines are also an important tool for tracking and evaluating implementation of the NSP both at National and County levels.

The preparation of County Spatial Plans and other lower-level plans which is a mandate of Counties has been slow and, in some Counties, has not begun at all. These guidelines

are therefore a quick reference in preparation of county plans and for some Counties to help optimize land in the absence of these plans.

1.6 Application

The guidelines will be used or applied in the following ways to achieve a more sustained and coordinated development of the County;

- To effectively coordinate planning between the National and the County Government;
- To improve the County Government's capacity to formulate, coordinate and implement integrated development policies, strategies, measures, programs and projects to address spatially unbalanced development;
- To inform strategic infrastructure policy and public investment decisions which support the achievement of balanced development in the County;
- To strengthen County inter-sectoral coordination within a spatial framework and provide the private sector with a clear context in which they can make investment decisions;
- To optimize the use of land and natural resources by providing a framework for making sustainable locational choices for sustainable development and conservation of land productivity in the County.

1.7 Process of preparing the Guidelines

The process involved reviewing the National Spatial Plan and identifying key issues, spatial policies, development strategies and measures specific to Siaya County. These key issues, spatial policies, development strategies and measures will be realized through preparation of County and other lower-level plans.

Research was undertaken on various thematic areas to enrich the County specific issues and development strategies as well as policy guidelines and measures/ interventions. Further, preparation of the guidelines considered the constitutional, policy and legal provisions on physical and land use planning. Expert opinion was sought on the identified issues, policies, measures and strategies for implementation viability.

These Guidelines have diverse consumers and application depending on prevailing circumstances and actors as demonstrated in Table 1 below:

Table 1: Targeted Users of the Guidelines

User	Application
County Executive Committee Member in charge of Physical and Land Use Planning	<ul style="list-style-type: none"> • Preparation of county and lower-level plans • Linkage of planning structures • Quality control of the various county plans • Formulate county planning policies and strategies • Establish county specific planning institutions • Coordinate and implement county plans and policies
The County Director of Physical and Land Use planning	<ul style="list-style-type: none"> • Advising the county government on the impact of the county specific guidelines to the county • Preparation of County physical and land use development plans and other lower level plans • Formulating County physical and land use planning policies, guidelines, strategies, and standards; • Issuance of development permission and other development control instruments under The Physical and Land Use Planning Act, 2013.
Licensed physical and land use planners both in public and private sectors	<ul style="list-style-type: none"> • Prepare, coordinate and implement spatial plans • Quality control of plans and consultancy services • Formulate policies, strategies and development guidelines • Dispute resolution
County assembly	<ul style="list-style-type: none"> • Approval of strategic sectoral budgets such as planning • Vetting of various County specific plans • Formulation and passing of County planning legislation • Enhance capacity to oversee the executive on spatial planning

Ministries, Departments and Agencies	<ul style="list-style-type: none"> • Mainstreaming relevant NSP policies, programs and projects • Allocation of resources to priority areas, • Strengthening linkages with spatial planning in resource management
The National Land Commission (NLC)	<ul style="list-style-type: none"> • Oversight role in land use planning to ensure efficient implementation of the NSP • Ensure relevant planning authorities carry out their functions as required by the law
Practitioners in the built environment	<ul style="list-style-type: none"> • Advance NSP relevant policies, programs and projects hence optimization of land resource • Appreciate sectoral Linkages to spatial planning • Facilitate incorporation of the policies, strategies and measures into, County specific plans
Community, developers and investors	<ul style="list-style-type: none"> • Comprehend the County priority sectors and County Plans and policies • Complement County spatial planning and implementation measures • Making informed investment decisions
Development partners	<ul style="list-style-type: none"> • Reference frame for selecting and funding spatial planning activities • Understand planning linkages and implementation • Informed development decisions
Training institutions	<ul style="list-style-type: none"> • Compliment the curriculum for training of spatial planners • Understand the planning procedures and processes

1.9 Key Principles

The principles, as applied in the NSP, should guide and form the basis upon which the lower-level physical and land use plans are prepared. Further the principles should ensure sustainable, coordinated, and realistic development. They include the following:

- 1. Effective Public participation/engagement:** All plans shall be prepared in a participatory and consultative manner with relevant stakeholders and sectoral actors.
- 2. Urban containment/Compact cities:** Local plans shall strive to limit and control urban growth within the set urban boundaries to protect rich agricultural land, mitigate urban sprawl and reduce cost of infrastructural provision.
- 3. Livability:** The planning of urban areas shall enhance the livability index in the area of housing, environment, transportation, health, and social engagement. The urban areas must be economically viable, socially inclusive and ecologically sustainable.
- 4. Smart and green urban growth:** Plans shall promote sustainable use of energy, creation of green spaces, reduce the need for car travel, and promote use of local materials, support businesses, protection of heritage and creation of unique character.
- 5. Sustainable development:** Balancing social, economic and environmental dimensions of development and catering for current and future generations.
- 6. Promotion of ecological integrity:** Plans shall promote the protection and conservation of environmentally sensitive areas.
- 7. Promote public transportation:** Favor public transportation over private transport to ensure efficiency and functionality of urban places.
- 8. Balanced development:** Plans to ensure there/ is balanced development in the County to cure inequalities.

2. THE POLICY, LEGAL AND PLANNING FRAMEWORK FOR THE GUIDELINES

2.1 Constitutional Framework

The formulation of these guidelines took into account the Constitution of Kenya 2010 aspirations and Principles. Article 66 of the Constitution of Kenya 2010 gives the State powers to regulate use of any land and property in the interest of land use planning among others. The Fourth Schedule of the Constitution assigns the National Government the role of capacity building and technical assistance to the counties.

2.2 Policy Framework

2.2.1 Sessional Paper No.10 of 2012-The Kenya Vision 2030

Kenya Vision 2030 is the overarching national development framework which all plans should be aligned to. The preparation of all spatial plans should take cognizance of the aspirations, foundations and development concepts of the vision. The preparation of the first National Spatial Plan is identified in Kenya Vision 2030 as a flagship project and is regarded as one of the foundations for socio-economic transformation. Hence the need for linkage between national planning and county planning which can be achieved through mainstreaming NSPs into CSPs and other lower level plans by preparing NSP county specific guidelines to implement the NSP at lower levels.

2.2.2 Sessional Paper No. 1 of 2017- National Land Use Policy

The policy was formulated to address the various challenges related to land use and ensure efficient, productive and sustainable use of land. The main goal of the policy is to provide legal, administrative, institutional and technological framework for optimal utilization and productivity of land related resources in a sustainable and desirable manner at national, county and community levels.

The Policy is premised on the philosophy of economic productivity, social responsibility, environmental sustainability and cultural conservation. The policy is applicable in the county to address the land subdivision into uneconomical parcels making the agricultural sector in the county challenging.

2.3 Legal Framework

2.3.1 The Physical and Land Use Planning Act, 2019

This is the overarching statute that provides for formulation of both national and county physical and land use planning policies, guidelines and standards. The Act further provides for administration, types, content, process and approval of the various types of Physical and Land Use Development Plans.

2.3.2 County Governments Act, 2012

This statute mandates County Governments to carry out the planning function at the county level. The guidelines enhance the capacity to prepare the various county level plans that meet the recommended quality and standards.

2.3.4 Urban Areas and Cities (Amendment) Act, 2019

The statute provides for classification of urban areas and cities, their governance and management, and for integrated development planning. The guidelines are a basis for preparation of these lower-level plans.

2.3.5 Environmental Management and Coordination (Amendment) Act, 2015

The Act provides for the establishment of an appropriate legal and institutional framework for the management of the environment as well as guidelines relating to environmental management and prevention or abatement of environmental degradation. The guidelines take cognizance of this Act and will be implemented within the framework.

2.3.6 National Land Commission Act, 2012

Provides the National Land Commission the management and administration of public land on behalf of the National and County Government, and to monitor and oversight planning in the country. The guidelines fall within the ambit of this statute and will facilitate their oversight responsibilities.

2.4 Planning Context

2.4.1 National Spatial Plan (NSP)

The National Spatial Plan (NSP) covers the whole country encompassing the forty-seven (47) counties and the Exclusive Economic Zone. The NSP outlines policies and strategies geared towards influencing desired future distribution and organization of population and activities outlined in vision 2030 and sectoral policies and plans. It aims at achieving economic efficiency and balanced development.

The various county spatial plans should be aligned to the policies outlined in the NSP, as demonstrated by the figure below.

Figure 2: Policy focus of the NSP



Source: *National Spatial Plan*

To actualize the NSP a comprehensive implementation strategy has been proposed that embraces a multiplicity of actors including National Government Ministries, Departments and Agencies, County Governments and the National Land Commission. The strategy proposes the establishment of the following institutions as key in the implementation of

the Plan; The National Physical Planning Council, the National Technical Committee and the County Physical Planning Committee.

2.4.2 NSP linkage to other plans

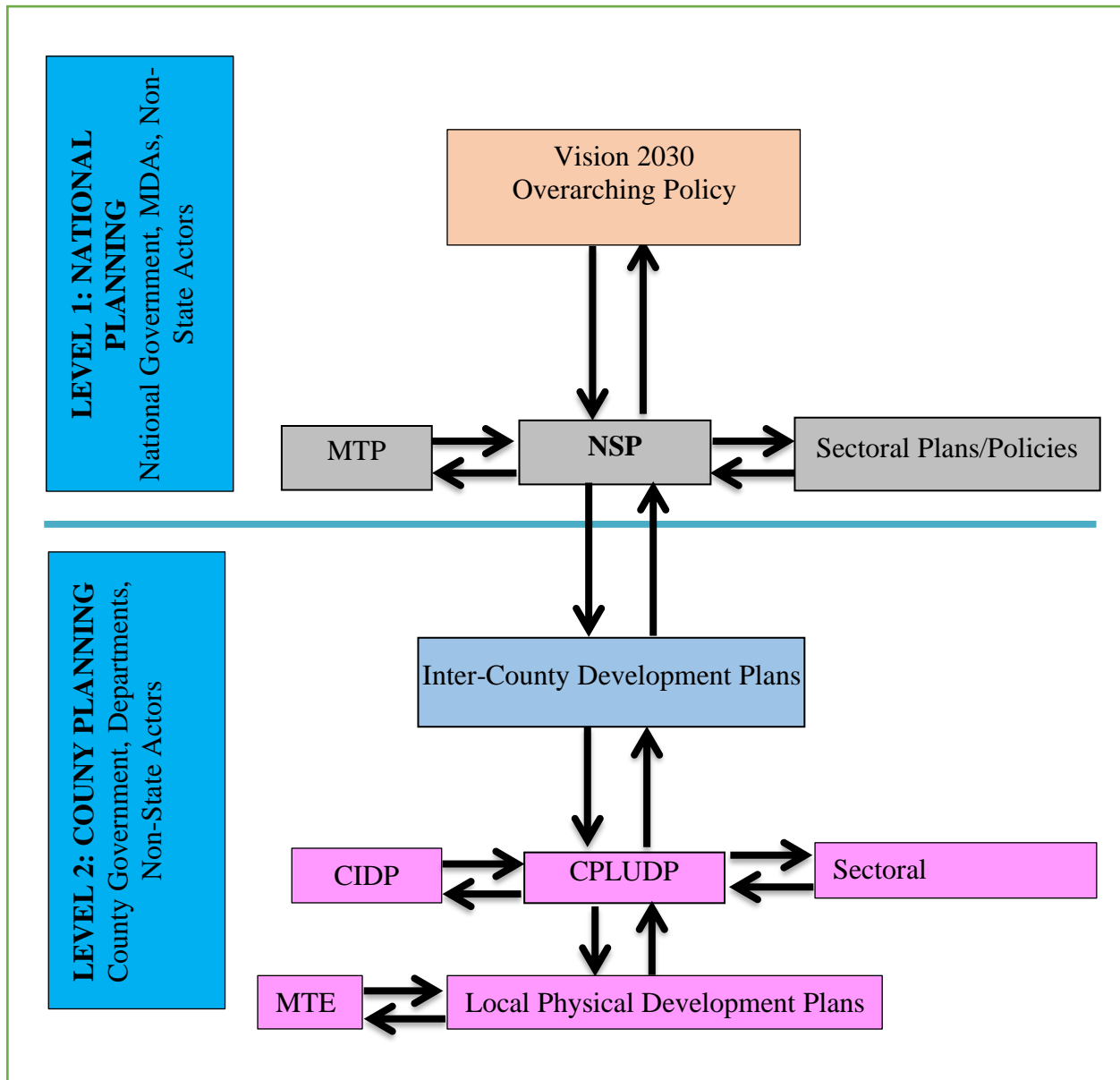
The linkage of the National Spatial Plan (NSP) to sector and lower level plans is key to realization of its aspirations and objectives and the successful actualization of the sector and lower level plans. The NSP linkage is through the provision of a spatial framework to ground the Vision 2030 flagships projects and form a basis for coordination of sectoral policies and lower level plans. On the other hand, the sectoral policies and plans informs the preparation of the NSP by provision of policies, issues, programs and projects.

The NSP provides policies, measures and strategies that the inter-county and county plans draws from while being prepared. The Inter county and county plans take into considerations the policies measures and strategies of the NSP and implements them thereby actualizing the aspiration of NSP.

The County Physical plans provides a framework, policies and strategies at the county level where the CIDP which is a sectoral based plan draws its programs and projects for implementation. The implementation of the CIDP in turn leads to realization of the objectives of the County physical plans. The sector polices and plans at county level informs the preparation of the county physical development by providing sector specific issues and strategies to be incorporated.

The graphic below illustrates the country's planning Linkage other plans.

Figure 3: National Spatial Plan Linkage to other plans



Source: State Department for Physical Planning, 2022

3. COUNTY PROFILE

3.1 Overview

This chapter provides a description of the county in terms of the location and size, physiographic and natural conditions, demographic profile, socio-economic and infrastructural information and the comparative advantage of the county.

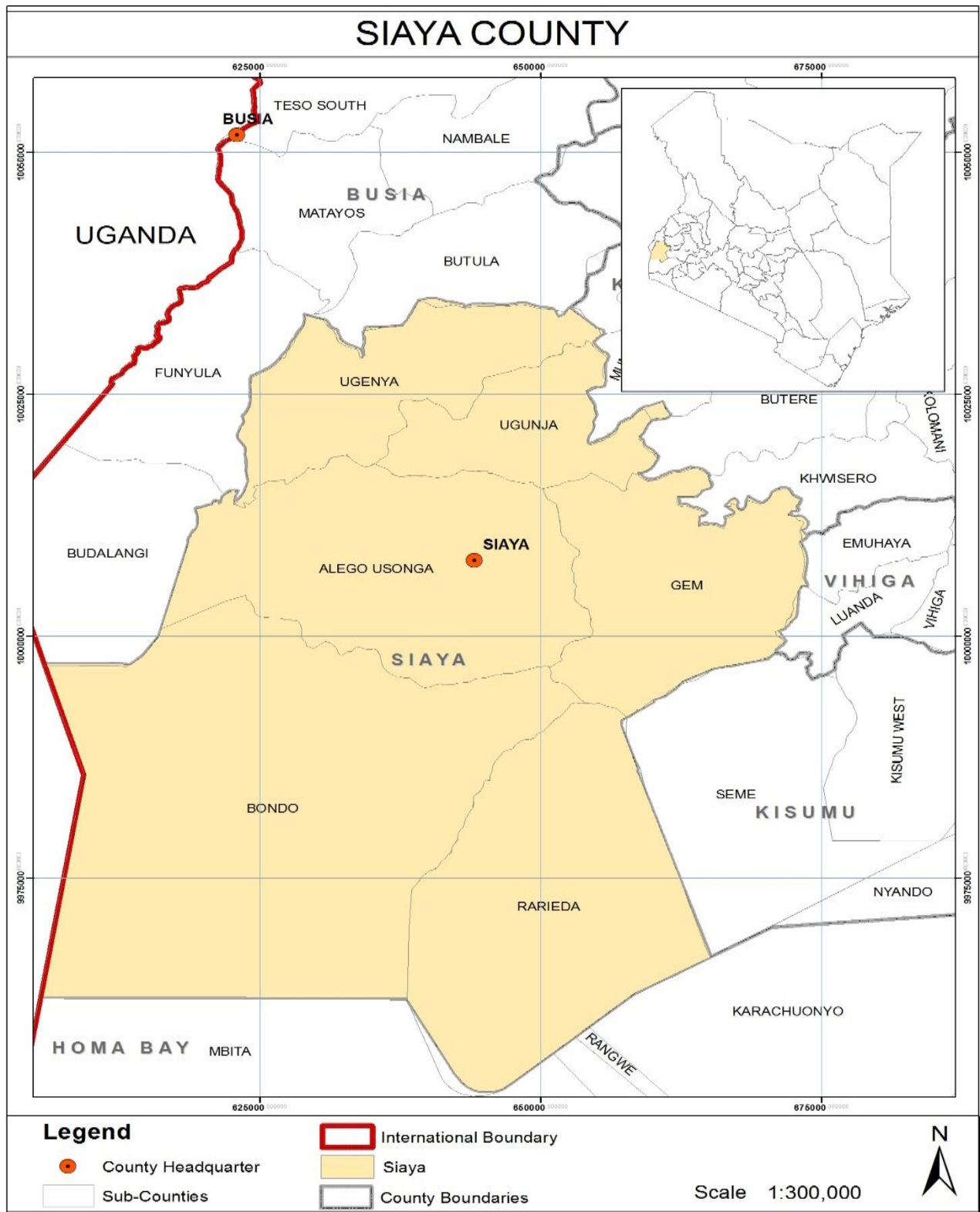
3.2 Location Context

Siaya County is located in Nyanza region and borders Busia County (North West), Vihiga and Kakamega counties (North East), Kisumu County (South East) and Homa Bay County (South).

Map 1 below shows the location of the County in national and regional context.

DRAFT

Map 1: Location context of Siaya County



Source: State Department for Physical Planning, 2022

3.3 Bio-physical context

The county has favorable climatic conditions given her agro-climatic location.

Topography: The altitude of the County rises from 1,140m on the shores of Lake Victoria to 1,400m above sea level on the North. There are few hills found in the County namely: Mbaga and Akara in Alego Usonga; Odiado in Ugenya among others.

Water resources: There are several swamps, wetlands, dams and pans. The major lakes in the County are Lake Victoria, Lake Kanyaboli and Lake Sare. The county has two (2) major rivers namely; Yala and Nzoia. These rivers form the County's drainage systems of major river basins with numerous tributaries and they drain directly into Lake Victoria.

Climatic conditions: The County experiences a bi-modal rainfall, with long rains falling between March and June and short rains between September and December. The rainfall ranges between 800-2,000mm and with temperatures varying between 21° and 29.1° C.

Forests: The County has two gazetted forests namely, Got Ramogi and Got Abiero and other potential forest sites but have not been gazetted, these include among others: Akara and Mbaga in Alego Usonga.

3.4 Social-Economic Status

3.4.1 Population and Demography

The population of Siaya County from KNBS 2019 data was estimated at 993,165 (52.51% women and 47.49% men). It has an average household size of 3.9 and population density of 393 persons per square kilometer.

The table below shows the population projection for both male and female up to the year 2045.

Table 2: Population Projection to the year 2045

Year	2019	2020	2025	2030	2035	2040	2045
Population size	993,165	1,010,049	1,098,873	1,195,508	1,300,641	1,415,019	1,539,456
Male	471669	479672	521855	567747	617674	671993	731088
Female	521496	530377	577018	627761	682967	743026	808368
households	254,658	258,987	281,762	306,541	333,498	362,825	394,732

Area	2,529.80	2,529.80	2,529.80	2,529.80	2,529.80	2,529.80	2,529.80
Density	393	399	434	473	514	559	609

Source: State Department for Physical Planning, 2022

3.4.2 Economic Activities

The main driver of the economy in Siaya County is Agriculture. The main food crops grown in the county are maize, sorghum, beans, cassava and sweet potatoes. Livestock production in Siaya includes rearing of beef and dairy cattle, poultry, sheep, goats and pigs. Fisheries in the County are two folds; capture fisheries from Lakes Victoria and Kanyaboli, and culture fisheries (aquaculture).

Trade and commerce is also evident in Siaya, and it is characterized by financial services such as commercial banks, microfinance institutions, insurance companies and cooperative societies.

The county is endowed with mining activities which comprise of minerals such as gold, granite and black sand.

The strategic location of the County along the western tourism circuit gives an advantage in investing and enhancing tourism.

3.4.3 Physical Infrastructure

Infrastructure is key to the achievement of the National Spatial Plan objectives of national competitiveness, regional balance and optimal utilization of land and other resources. Siaya has fairly developed infrastructure including transport, physical and social infrastructure which have a high potential of economically empowering its People and attracting private investors if well maintained.

The sector faces problems regarding poor connection, low coverage, unreliability, high costs, skewed distribution and low/surpassed design. To rectify this situation, clear indicative policy, strategies and measures have to be developed and implemented to achieve overall efficiency.

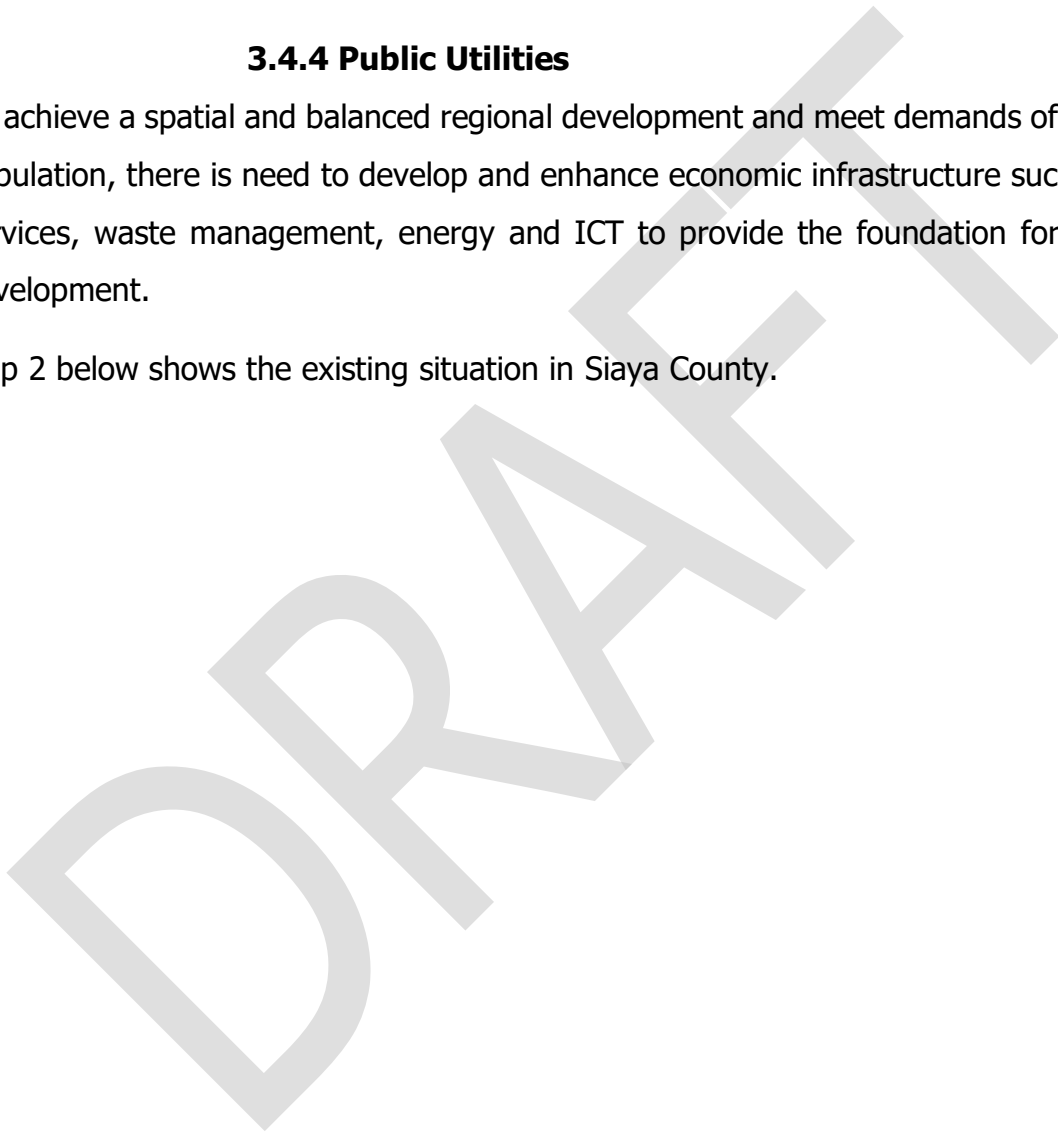
Road transport is the pre dominant transport mode in the county. Kisumu-Busia Highway (which is an international trunk road, class B1) traverse the county connected to a hierarchy of roads.

There are three main airstrips in the county namely Gombe, Dominion and Sega. There are three jetties in the county namely Luanda K'otieno, Asembo Bay and Usenge.

3.4.4 Public Utilities

To achieve a spatial and balanced regional development and meet demands of a growing population, there is need to develop and enhance economic infrastructure such as water services, waste management, energy and ICT to provide the foundation for economic development.

Map 2 below shows the existing situation in Siaya County.



Map 2: The Existing Situation in Siaya County



Source: State Department for Physical Planning, 2022

3.5 Comparative Advantage

- a. Strategic location: The county proximity to Lake Victoria and a major transportation corridor Kisumu-Busia Highway (class B1) that is traverse the county and a network of roads.
- b. High agricultural potential region: This region has high potential for rain fed agriculture and other inherent potentials like industries and urbanization. The expansive Yala Swamp has potential for large scale- irrigation using river Yala.
- c. The County has high potential for tourism (western Tourism circuit) due to tourist attractions like Lake Victoria, Lake Kanyaboli Game Reserve and diverse culture and heritage.
- d. Availability of raw materials (fish, sand, mangoes, skins and hides, underlying rocks) and readily available market.
- e. Lake Victoria shores on Siaya provide good breeding grounds for fish especially where river Yala and Nzoia joins the lake.

4. DEVELOPMENT STRATEGIES AND POLICY GUIDELINES FOR SIAYA COUNTY

4.1 County Specific Issues and Development Strategies

The National Spatial Plan provides strategies for spatial growth and development across the country. The strategies are aimed at providing a spatial expression to Kenya Vision 2030 and other sector policies.

This section seeks to provide strategies for spatial growth and development of the county by addressing the factors that prevent the county from achieving the intended goals and objectives. The development strategies discussed are aimed at enhancing the national impacts, optimizing use of natural resources, creating an intra- county balance and transforming rural areas. Specifically, the development strategies have been proposed to address the following aspects of the county's development agenda;

- Enhancing the national competitiveness
- Optimal use of land and other resources
- Balanced intra- county development
- Rural development in the county
- Urbanization

The following are detailed NSP sector-specific issues and strategies that apply to Siaya County.

Table 3: County Specific Issues and Development Strategies

Sector	Opportunities	Issues	Strategies
Strategy 1: Enhancing National Competitiveness			
	<ul style="list-style-type: none"> ➤ Location and investment destinations which offer high return on investment at relatively low costs in towns such as Siaya, Bondo, Yala Usenge and Ugunja. ➤ Emergence of several growing trading centers and many fish landing beaches 	<ul style="list-style-type: none"> ➤ Low return destination on investment due to high costs of production, Inefficiency and outdated technology. ➤ Poor governance 	<ul style="list-style-type: none"> ➤ Locate export oriented industrial and manufacturing activities Siaya, Bondo and Ugunja to leverage on their transportation ➤ Encourage locations of resource based industries where resources are located
	<ul style="list-style-type: none"> ➤ Presence of various institutions dealing with knowledge development including Universities (Jaramogi Oginga Odinga University of Science and Technology) 	<ul style="list-style-type: none"> ➤ Lack of a conducive environment for the workers and their families in the form of payments, facilities, housing, transport and safety ➤ Overreliance on some activities like fishing along the lake shows 	<ul style="list-style-type: none"> ➤ Address housing, urban facilities, transportation , safety challenges to encourage knowledge workers and their families to locate major urban centers primarily and other complementary growth nodes at county level
Strategy 2: Optimizing Use of Land and Natural Resources			
Agriculture	<ul style="list-style-type: none"> ➤ Presence of two agro ecological zones that favors different agricultural activities including fishing, livestock and crop production. ➤ Availability of water resources; Lake Victoria, 	<ul style="list-style-type: none"> ➤ Low uptake of appropriate technology and skills to produce, process, preserve and market agricultural products ➤ Lack of markets skills amongst the farmers and the business community 	<ul style="list-style-type: none"> ➤ Provide subsidies to promote the use of appropriate farm inputs and technology ➤ Improve infrastructure in agricultural areas ➤ Enforce existing regulations on water pollution and regulate the abstraction of water

	<p>Kanyaboli and Sare and R.Yala and Nzoia for irrigation</p> <ul style="list-style-type: none"> ➤ Availability of natural fish in Lake Victoria, Kanyaboli and the two rivers (Yala and Nzoia) ➤ Proximity to Kisumu international airport 	<ul style="list-style-type: none"> ➤ Inadequate agricultural support infrastructure ➤ Use of inappropriate farm inputs and technology; ➤ High cost farm inputs ➤ Unpredictable weather conditions ➤ Diminishing fish stock in the lake and re-ceding water levels ➤ Overfishing ➤ Pollution of lake with water hyacinth ➤ Weak implementation of laws especially on fishing where there is inadequate patrols by the fisheries officials on the lake ➤ Flooding 	<ul style="list-style-type: none"> ➤ Provide subsidies on fishing equipment and undertake research on the best fishing practices ➤ Control of fishing territories in the County to curb continued disturbance by Ugandan fishing authorities ➤ Control water pollution and hyacinth ➤ Provide alternative fish farming methods such as Cage fishing and aquaculture ➤ Map, gazette and protect all important rivers and fishing grounds ➤ Control flooding especially around Yala swamp
<p>Environmental Conservation and Protection</p>	<ul style="list-style-type: none"> ➤ Existing 2 gazetted forests (Got Ramogi and Got Abiero) ➤ Existing Islands in the County (Mageta, Sirigombe, Magari and Yalombo) ➤ Existing environmental policies and regulations 	<ul style="list-style-type: none"> ➤ Soil erosion ➤ Deforestation especially on the hills ➤ Flooding (around Yala swamp) ➤ Encroachment of human settlements on water bodies ➤ Pollution and destruction of marine ecosystem ➤ Water hyacinth menace ➤ Lack of enforcement of Environmental Act ➤ Sand harvesting 	<ul style="list-style-type: none"> ➤ Strict soil erosion conservation measures ➤ Regulation of human settlements ➤ Flood mitigation measures put in place ➤ Preservation and conservation of marine resources diversity ➤ Implementation of existing development plans ➤ Embrace modern farming methods

			<ul style="list-style-type: none"> ➤ Promote afforestation of hilltops, reforestation and agroforestry ➤ Rehabilitation of wetlands; ➤ Enforcement of EMCA
<p>Natural Resources – Minerals; Gold, fluorite, granite and black sand; Lake Victoria, Kanyaboli Permanent Rivers, game reserve, Hills, wild life(Sitatunga in Lake Kanyaboli), Islands and beaches</p>	<ul style="list-style-type: none"> ➤ Existing rivers, lake and mineral resources ➤ Variety of wildlife including Sitatunga ➤ Existing gazetted game reserve at Lake Kanyaboli 	<ul style="list-style-type: none"> ➤ Underutilization of existing natural resources ➤ Inadequate technology and exploration infrastructure ➤ High costs of exploiting available natural resources ➤ Pollution of the air and water bodies ➤ Encroachment of human settlements onto the water bodies ➤ Human wildlife conflict (hippos) along the shores of Lake Victoria 	<ul style="list-style-type: none"> ➤ Optimal utilization of the available natural resources ➤ Environmental conservation ➤ Invest in appropriate technology transportation infrastructure ➤ Strict soil erosion and flooding control measures ➤ Undertake further exploration of the available natural resources.
<p>Industry</p>	<ul style="list-style-type: none"> ➤ Existing raw materials from cash and food crops grown in the area including; mangoes, cotton, rice, palm oil, passion fruits, watermelon, grain amaranth and fish products for processing ➤ Availability of mineral and forest resources like gold, fluorite and black sand 	<ul style="list-style-type: none"> ➤ Low industrial development ➤ Low adaptation of technology for exploration and exploitation ➤ Low uptake on value additions ➤ Inadequate transport infrastructure ➤ Lack of established value chains ➤ Insufficient market for finished products ➤ High energy costs ➤ Price fluctuation 	<ul style="list-style-type: none"> ➤ Provide appropriate technology to enhance value addition ➤ Invest in exploration of mineral reserves ➤ Diversify energy production sources to reduce cost of production and enhance reliability ➤ Provide adequate infrastructure and utilities, skilled labor and favorable government policies ➤ Establish industrial parks

	<p>among others need to be exploited</p> <ul style="list-style-type: none"> ➤ Availability of water resources for industrial use ➤ Presence of several trading centers in the county for marketing the products 		
Tourism-The county falls in the western circuit	<ul style="list-style-type: none"> ➤ The existing tourist attraction sites including Got Ramogi, Jaramogi Oginga Odinga Mausoleum, Achieng Oneko mausoleum, Kogelo (obamas home), Mageta Island, Odera Akang’o office and cells in Yala and several island and beaches in Victoria and, wild animals such as Sitatunga in Lake Kanyaboli. ➤ Existing three airstrips but non-functional ➤ Proximity to Kisumu international airport 	<ul style="list-style-type: none"> ➤ Underutilization of tourism potentiality in the western tourism circuit. ➤ Frequent conflict between the human and hippos/crocodiles along the shores of Lake Victoria ➤ Inadequate tourism facilities ➤ Inadequate transport infrastructure 	<ul style="list-style-type: none"> ➤ Open up the underutilized sites ➤ Invest in roads and other tourism relate infrastructure ➤ Revitalize the existing airstrips ➤ Promote domestic tourism by providing incentives and subsidies ➤ Strict enforcement of the existing regulations for safeguarding protection areas ➤ Increase in tourism market segment ➤ Enhance security in tourism potential areas
Transportation Roads	<ul style="list-style-type: none"> ➤ Rapid urbanization ➤ Devolution leading to opening up of rural areas ➤ Existing development plans ➤ Existing road network ➤ Increased trade and investments 	<ul style="list-style-type: none"> ➤ Poor road networks and conditions ➤ Lack of coordination of activities by various agencies in charge of the sector ➤ Uncontrolled motorcycle outburst in both rural and urban areas ➤ Poor quality of transport services 	<ul style="list-style-type: none"> ➤ Open up more rural access roads ➤ Properly maintain all roads ➤ Integrate the existing transport system ➤ Upgrading of existing roads

	<ul style="list-style-type: none"> ➤ Exploitation of untapped resources 	<ul style="list-style-type: none"> ➤ Inadequate parking spaces ➤ Encroachment on road reserves ➤ Unintegrated transport system 	<ul style="list-style-type: none"> ➤ Improve linkages between the airstrips and the existing major towns ➤ Repossess and revert all illegally acquired land for roads infrastructure; ➤ Create linkages to agricultural, tourist and urban areas ➤ Proper traffic management system for urban areas ➤ Enforce a regulatory standard requirement for all public transport service operators ➤ Connect all the county headquarters with proper transportation system
Air	<ul style="list-style-type: none"> ➤ Existing 3 airstrips (Gombe, Dominion and Segla) ➤ Rapid urbanization in the county 	<ul style="list-style-type: none"> ➤ Non-functional airstrips ➤ Ineffective linkages between airstrips and other transport modes; ➤ High maintenance cost; ➤ Poor condition of the 3 airstrips; ➤ Lack of demand as most businesses are located in Nairobi; ➤ Encroachment/grabbing of airstrips influence area; 	<ul style="list-style-type: none"> ➤ Improve/rehabilitate and expand existing three airstrips ➤ Enforce development control measures within and around the airstrips ➤ Improve linkages between the airstrips and the existing major towns
Water- Inland port (Asembo bay port), Jetties(fish	<ul style="list-style-type: none"> ➤ Existence of port at Asembo Bay 	<ul style="list-style-type: none"> ➤ Underdeveloped and underutilized ports ➤ Lack of institutional capacity to manage ports; 	<ul style="list-style-type: none"> ➤ Develop the inland port of Asembo Bay to support passenger travel, fishing

<p>landing beaches)- Luanda Kotieno, Misori, Usenge, Nango, WichLum among others</p>	<ul style="list-style-type: none"> ➤ Adequate space for water transport along Lake Victoria and Kanyaboli ➤ Plenty of fish landing beaches (33) ➤ Increased trade and investments in water transport services including ferry ➤ Increased revenue ➤ Reduction of transport costs 	<ul style="list-style-type: none"> ➤ Water hyacinth ➤ Undeveloped jetties (Fish landing beaches) ➤ Inadequate fish storage capacity; ➤ Inadequate harmonization and overlap in the many legislations that govern its activities; 	<p>industry, tourism and other commercial activities.</p> <ul style="list-style-type: none"> ➤ Restructure management of port and inland water transport; ➤ Maximize the use of inland water transport ➤ Provide adequate infrastructure to the jetties or fish landing beaches ➤ Develop more jetties to enhance water transport ➤ Control water hyacinth
<p>Public Utilities- Water and sanitation, solid waste management, Energy</p>	<ul style="list-style-type: none"> ➤ Availability of water sources including Lake Victoria and Kanyaboli, Rivers, boreholes, water pans and water wells/springs. ➤ Growing energy demand ➤ Alternative energy sources- the county has prospects for energy sources including solar 	<ul style="list-style-type: none"> ➤ Frequent water shortages in major towns of Bondo, Usenge, Siaya, and Ugunja ➤ Pollution of existing water bodies ➤ Unreliable access to clean and sufficient water ➤ Inadequate public sanitation facilities ➤ Lack of sewerage network in major towns ➤ Frequent power outages ➤ Under exploitation of other energy sources 	<ul style="list-style-type: none"> ➤ Invest in water harvesting technology ➤ Develop appropriate water reticulation network ➤ Develop appropriate sanitation Infrastructure including collection, disposal and treatment systems ➤ Encourage use of renewable energy ➤ Develop other energy sources such as wind and solar ➤ Expand electricity cover to trading centers ➤ Develop sewerage system in major towns
<p>Information and Communication</p>	<ul style="list-style-type: none"> ➤ Existing systems in the County 	<ul style="list-style-type: none"> ➤ Limited access to internet in both rural and urban areas 	<ul style="list-style-type: none"> ➤ Mainstream ICT in all sectors of the County to increase

	<ul style="list-style-type: none"> ➤ High population 	<ul style="list-style-type: none"> ➤ Poor connection and reliability ➤ High connection costs 	<p>efficiency and productivity and improve on existing platforms</p> <ul style="list-style-type: none"> ➤ Expand fiber optic network to all urban areas to increase coverage
Sporting infrastructure	<ul style="list-style-type: none"> ➤ Existing facilities – Siaya stadium, Migwena among others ➤ Boat raising in areas like Luanda Kotieno, Misori and Usenge ➤ Immense, untapped sporting talent in the county ➤ Availability of land for infrastructure development in various parts of the county including Lake Victoria 	<ul style="list-style-type: none"> ➤ Lack of proper repair and maintenance structures ➤ Poor management of existent infrastructure ➤ Skewed distribution ➤ Little modernization and upgrade of sporting infrastructure 	<ul style="list-style-type: none"> ➤ Set aside budgetary allocation for revamping and upgrading sporting facilities ➤ Provide all necessary stadia facilities and their auxiliary utilities
Strategy 3: Promoting Balanced Intra-County Development			
	<ul style="list-style-type: none"> ➤ Existing resources – Forests, minerals, agricultural based activities, Industries, tourism based resources, lake based resources ➤ Enabling policy framework ➤ Establishment of the County under devolution ➤ Rain fed and irrigated agriculture ➤ Fishing Tourism 	<ul style="list-style-type: none"> ➤ Inadequate infrastructural facilities and services ➤ Under exploitation of resources ➤ Weak linkages between regions 	<ul style="list-style-type: none"> ➤ Strengthen the established economic block in the region ➤ Encourage equitable exploitation and sound management of mineral resources while ensuring local participation for improved economic development ➤ Promote investment in sustainable tourism including eco- tourism

	<ul style="list-style-type: none"> ➤ Urbanization-many growing trading centers including fish landing beaches 		<ul style="list-style-type: none"> ➤ Promote irrigation activities for improved productivity in quantity and quality of yield within the regions along the lake and rivers ➤ Promote industrialization and value addition through the provision of support infrastructure in the less developed regions of the County as well as strengthening the better developed regions
Strategy 4: Promoting Rural Development			
	<ul style="list-style-type: none"> ➤ Resource endowment; forest based, tourism based resources, agriculture based activities- rain fed and irrigated, mineral deposits and industries ➤ Existing infrastructure ➤ Training institutions such as Siaya Technical training Institute among others 	<ul style="list-style-type: none"> ➤ Under exploitation of resources ➤ Weak rural – urban linkages ➤ Inefficient and dilapidated infrastructural services ➤ Slow adoption technology and innovation ➤ Low productivity ➤ Human – wildlife conflicts ➤ Uncontrolled sub-division of agricultural land; 	<ul style="list-style-type: none"> ➤ Develop appropriate transport and infrastructural facilities and services ➤ Promote rural industrialization (rural tourism, mining, agro based industries) through establishment of production units in the rural areas in relation to their potential ➤ Promote urban containment to reduce effects of urban sprawl into the rich agricultural ➤ Promote sustainable land uses
Strategy 5: Urbanization			
	<ul style="list-style-type: none"> ➤ Existing and proposed infrastructure developments 	<ul style="list-style-type: none"> ➤ Skewed spatial distribution of urban centers ➤ Urban Sprawl 	<ul style="list-style-type: none"> ➤ Promote the development of centers as per their potential and population as local, market,

	<ul style="list-style-type: none"> ➤ Devolution ➤ Supporting Policies 	<ul style="list-style-type: none"> ➤ Informal Settlements ➤ Unreliable Transport Systems ➤ Lack of Role Specialization ➤ Poor Implementation of Development ➤ Plans and Planning Policies ➤ Land and Governance Issues ➤ Inequality in Urban Areas ➤ Solid Waste Management 	<p>rural, urban centers and growth centers.</p> <ul style="list-style-type: none"> ➤ Create an enabling environment for commercial and industrial developers to activate potential development within the urban areas hence increased employment opportunities for improved livelihoods of urban dwellers. ➤ Provide alternative areas for development of urban centers by provision of services and infrastructure closer to the rural areas thus urban containment and stimulating rural growth. ➤ Strengthen urban-rural linkages through provision of integrated transportation and communication system to reduce the rate of urbanization and improve the rural economy.
--	-----------------------------------------------------------------------------------------------	-----------------------------------------------------------------------------------------------------------------------------------------------------------------------------------------------------------------------------------------------------------------------------------------------------------------------------------------------------------	-----------------------------------------------------------------------------------------------------------------------------------------------------------------------------------------------------------------------------------------------------------------------------------------------------------------------------------------------------------------------------------------------------------------------------------------------------------------------------------------------------------------------------------------------------------------------------------------------------------------------------------------------------------------------------------------------------------------

Source: State Department for Physical Planning, 2022

4.2 National Spatial Plan Policy Guidelines and Measures for Siaya County

The National Spatial Plan has stipulated policies to provide a foundation upon which to anchor the strategies enumerated therein. The primary aim is to inculcate discipline in the use of land and natural resources of the country thus stemming duplication and wastage of the resources.

This section seeks to provide the spatial policy guidelines and measures aimed at promoting the achievements of the objectives of the National Spatial Plan using its guidelines. They aim at enhancing global competitiveness and economic efficiency, optimizing the use of land and natural resources, promoting the regional balanced development and conservation of the environment. These policies are supported by a wide range of measures which spell out the specific actions to be undertaken to actualize the policy intentions. The policies shall ensure that the county is globally competitive as an investment especially in emerging sectors such as the ICT. The policies shall also be implemented by the county government's agencies responsible for physical planning and development control as well as the authorities responsible for land administration.

The following are the policies and measures specific to Siaya County.

Table 4: Policy Guidelines and Measures

Sector	Policy Statement	Measures
Resource Potential Growth Regions		
Development of Spatial Growth Regions; Zone 3: Highlands (Western, Central and Rift Valley)	<ul style="list-style-type: none"> ➤ Enhanced agricultural production and value addition ➤ Investment in social and physical Infrastructure ➤ Environmental conservation ➤ Intensive land use ➤ Sustainable urban land use and growth 	<ul style="list-style-type: none"> ➤ Infrastructure provision to support value addition initiatives and human settlement ➤ Development of small and medium urban Centers ➤ Conservation of water resources ➤ Rural development through provision of infrastructure, agricultural sector development and related economic activities

	<ul style="list-style-type: none"> ➤ Balanced growth ➤ Densification of built-up areas 	<ul style="list-style-type: none"> ➤ Development and rehabilitation of key infrastructure in underserved locations ➤ Provision of services to the under-served population ➤ Environmental protection ➤ Conservation of wildlife and forest resources
Potential for Blue Economy	<ul style="list-style-type: none"> ➤ Development of tourism infrastructure in the lake region ➤ Investment in physical and social infrastructure ➤ Sustainable use and exploitation of natural resources ➤ Concentrated development especially around key urban areas ➤ Resource conservation and cultural preservation around Victoria 	<ul style="list-style-type: none"> ➤ Selective development concentration ➤ Infrastructure provision in key human settlement zones ➤ Environmental protection of parks including marine reserves and forests ➤ Conservation of unique cultural landscape and resources ➤ Small and medium urban Centers development ➤ Rural development through provision of infrastructure, agricultural sector development and related economic activities
County Spatial Structure	<p>The National Spatial Plan shall be the basis for the preparation of lower tier development plans to achieve integrated and sustainable land use planning and to promote harmony and mutual cooperation in planning in Kenya</p>	<ul style="list-style-type: none"> ➤ All Regional, County and Local physical/spatial plans for Siaya county shall be guided by the objectives and policies of the NSP ➤ Review existing Siaya County Physical and Land use Development Plan to conform to the objectives and policies of NSP ➤ All county sectoral policies shall take cognizance of the objectives and policies of NSP ➤ The review of the 5-year medium term plans (MTP's) shall take into account provisions of the NSP ➤ Planning authorities at county levels shall be supported with adequate human, financial and technical resources to promote sustainable Physical/spatial planning and development

<p>Enhancing Competitiveness</p>	<p>National</p> <ul style="list-style-type: none"> ➤ Land and natural resources shall be utilized optimally and sustainably ➤ Investment in physical and social infrastructure ➤ Concentrated development especially around key urban areas ➤ Resource conservation and cultural preservation ➤ Tourism infrastructure shall be developed ➤ Environmental Conservation 	<ul style="list-style-type: none"> ➤ Enhance the Livability Index for urban areas by providing quality and affordable housing, improving neighborhood characteristics, improving quality of the environment, providing better healthcare and creating employment opportunities ➤ Selective development concentration ➤ Infrastructure provision in key human settlement areas ➤ Environmental protection of environmentally sensitive areas and forests ➤ Conservation of unique cultural landscape and resources ➤ Small and medium urban Centers development ➤ Rural development through provision of infrastructure, agricultural sector
<p>Modernizing Agriculture</p>	<ul style="list-style-type: none"> ➤ Agriculture potential areas in the rural areas to be safeguarded against urbanization and land sub-division ➤ Intensification of the agricultural use of land to increase productivity 	<ul style="list-style-type: none"> ➤ Prepare and implement County spatial plan and lower level plans to protect agricultural land ➤ Support market access and market linkages ➤ Improve extension and technology uptake in the agriculture sector
	<p>The fishing potential of the county shall be optimized to increase the food stock and export earnings</p>	<ul style="list-style-type: none"> ➤ Protect the inland fishing resources from over fishing, pollution and destruction of the breeding grounds ➤ Support the sustainable exploitation of lake fishing resource ➤ Undertake research to identify the specific areas with potential for fish farming ➤ Provide appropriate infrastructure to support the fishing industry

Diversifying tourism	Diversification of tourism by offering diverse products in the different tourist circuits throughout the county.	<ul style="list-style-type: none"> ➤ The tourism in the Western Circuit shall be planned and developed to offer; ecotourism, ecology/study tourism, sports and cultural tourism, adventure tourism, medical tourism, MICE, agro tourism and cultural and heritage tourism products
	Appropriate Tourism support infrastructure and facilities shall be provided	<ul style="list-style-type: none"> ➤ Formulate planning regulations and standards to guide tourist specific infrastructure and facilities. ➤ Develop the requisite tourism support infrastructure and facilities. ➤ Provide and upgrade the ICT infrastructure to support tourism.
	Tourist attraction areas and sites shall be conserved and protected	<ul style="list-style-type: none"> ➤ Identify, map and protect all tourism attraction sites in the County ➤ Prohibit the location of incompatible land use activities. ➤ Strictly regulate developments within the tourist attraction sites.
	Appropriate transport infrastructure shall be provided to link the different tourist circuits, attraction areas and sites	<ul style="list-style-type: none"> ➤ Prepare and implement an integrated Tourism transportation master plan. ➤ Upgrade the existing county land and water transportation facilities.
	Governance of the tourism sector shall be enhanced.	<ul style="list-style-type: none"> ➤ Prepare integrated spatial plans to guide development of the tourism sector. ➤ Prepare and implement National Policies on land use, wildlife and tourism; ➤ Undertake research to identify more tourist attraction areas and sites, inventories Agro tourism sites in potential areas and food festivals ➤ Facilitate access to eco-tourism development incentives ➤ Market eco-tourism facilities.

<p>Managing Settlements</p>	<p>Human</p> <ul style="list-style-type: none"> ➤ Existing urban areas shall be subjected to strict development control to curtail encroachment on high potential agricultural land ➤ Rural growth centers shall be rationalized and supported to act as central places and settlements clustered to free the rich agricultural land ➤ Human settlements shall be developed in line with environmental and natural resources conservation ➤ Provision of an efficient, reliable and effective transport system for human settlements ➤ The management and governance of Human ➤ Settlements particularly the urban areas shall be improved. ➤ Advocate for upgrading of the existing settlements and forestalling of new informal settlements ➤ Peri-urban development shall be managed and controlled to contain urban growth within its limits and protect rural land uses. 	<ul style="list-style-type: none"> ➤ Prepare and implement local physical development plans to define the urban growth limits for the principal urban centers ➤ Enforce strict regulations and justifications on development control processes. ➤ Provide requisite infrastructure to support growth and development. ➤ Promote sectors such as agriculture that have potential to stimulate rural development ➤ Incorporate disaster management and mitigation in planning of rural settlements. ➤ Plan and provide an integrated waste management system. ➤ Build institutional capacities of the urban areas management boards
<p>Conserving the Environment</p>	<p>Natural</p> <ul style="list-style-type: none"> ➤ All environmentally sensitive areas shall be protected and utilized in a sustainable manner 	<ul style="list-style-type: none"> ➤ Prepare and implement integrated management plans for Environmental sensitive areas

	<ul style="list-style-type: none"> ➤ All government agencies shall integrate environmental concerns in policy formulation, resource planning and development processes ➤ Community participation shall be mainstreamed in the protection and conservation of natural resources ➤ National and County Physical Planning departments shall mainstream climate change into their planning processes 	<ul style="list-style-type: none"> ➤ Involve and empower communities in the management of environmentally sensitive areas and promote environmental education and awareness ➤ Adopt appropriate land use planning and watershed management practices for sustainable development ➤ Promote sustainable waste Management and Pollution Control ➤ Identify species which are rare and endangered with the aim of protecting them from extinction ➤ Develop and implement harmonized regional plans for sustainable management of trans-boundary resources ➤ Implement the National Climate Change Strategy and the National Climate Change Action plan Strengthen Environmental Governance and harmonize sectoral policies, legislation and regulations
Integrating the National Transportation Network	<ul style="list-style-type: none"> ➤ An integrated and functional transport system for the county and urban areas shall be developed ➤ An urban transport policy that facilitates an integrated, balanced and environmentally sound urban transport system in which all modes efficiently play their roles shall be developed ➤ Environmental conservation shall be upheld in the planning, development and management of the transportation network 	<ul style="list-style-type: none"> ➤ Provide access and linkage, between county headquarter and sub-county headquarters and link them to national transportation corridors ➤ Adopt transit oriented development in the planning, design and development of all public urban transport ➤ Integrate land use with urban transport planning ➤ Design and develop integrated transport networks that considers all different modes of transport for all people ➤ Establish a comprehensive transport management information system for all transport modes ➤ Develop a public transport policy to regulate planning and management of public transport

		<ul style="list-style-type: none"> ➤ An efficient and affordable Mass Public Transport for all urban areas in the country shall be developed 	
Providing Infrastructure	Appropriate	<ul style="list-style-type: none"> ➤ Safe, adequate, reliable and affordable electricity for both urban and rural settlements shall be provided ➤ Expansion and improvement of water reticulation systems to facilitate the access to clean, safe, adequate, reliable and affordable water in human settlements shall be promoted ➤ A globally competitive, accessible and affordable higher education, training and research facilities shall be promoted ➤ A network of functional, efficient, safe, accessible and sustainable county health referral infrastructure shall be established ➤ Appropriate, quality, efficient and cost effective ICT infrastructure in both rural and urban areas shall be promoted ➤ The expansion of sewerage systems and waste management facilities shall be promoted to improve sanitation in human settlements ➤ Sporting infrastructure shall be planned, developed, maintained and 	<ul style="list-style-type: none"> ➤ Mainstream and enforce green energy options in the design of buildings ➤ Increase access to electricity through upgrading and expansion of the national power transmission and distribution network ➤ Development of county rainwater harvesting strategy and water storage investment plans for all the villages and urban centers; ➤ Restore all the water towers. ➤ Build water kiosks and yard taps, develop water supply pipeline systems and sewers, and a comprehensive mapping of all water supplies systems in the informal settlements ➤ All universities and other tertiary institutions to invest in research, technology and innovation ➤ Develop and upgrade physical infrastructure in all education institutions to increase their capacity ➤ Strengthen outreach systems for provision of health services to marginalized and vulnerable population ➤ Provision of quality emergency health services at the point of need ➤ Develop and upgrade ICT Infrastructure to cover all the rural and local growth centers ➤ Mainstream use of ICT in all levels of government and the private sector (e-government)

	<p>the existing rehabilitated to promote sports development</p>	<ul style="list-style-type: none"> ➤ All spatial plans to make provision for development of sewer systems and treatment works and solid waste disposal sites ➤ Expansion of urban boundaries to be guided by investment in infrastructural services ➤ Adopt appropriate technology to facilitate reduction, recycle and reuse of waste (3r's) ➤ Establish County Sports Talent Centers to nurture and develop sports talents in the county
<p>Towards a Rapidly Industrializing County</p>	<ul style="list-style-type: none"> ➤ The cluster development strategy shall be promoted to focus on proximity to raw materials and markets of region specific products ➤ Specific sites for industrial development shall be identified, planned and serviced with the appropriate infrastructure ➤ Adequate and affordable energy supply for the industrial sector shall be provided 	<ul style="list-style-type: none"> ➤ Prepare and implement an industrial master plan ➤ Promote value addition in processing of local produce ➤ Integrate the industrialization process and environment conservation ➤ Provide an integrated, efficient, reliable and sustainable transport and energy infrastructure ➤ Adopt renewable energy generation programs ➤ Promote the adoption of energy efficient technologies to lower the demand for energy

Source: State Department for Physical Planning, 2022

The map below shows the NSP proposals for the County.

Map 3: NSP Proposals for Siaya County



Source: State Department for Physical Planning, 2022

5. IMPLEMENTATION AND ADOPTION OF THE GUIDELINES

5.1: Overview

The implementation framework identifies activities and further ties them with responsible actors, resources and timeframes adequate for their execution. It constitutes a deliberately established method, means or system of ensuring that the policies, strategies and measures outlined in the guidelines are continuously and consistently executed to achieve their objectives.

To effectively implement the guidelines, the various sectors, actors and levels of planning have been identified and have to work together and the mandate of the sectors at the National and County levels of planning have to be integrated.

5.2 Implementation Approaches

The County Specific Guidelines will be implemented through various approaches including:

1. Preparation of spatial plans to integrate and conform to the proposals of the County Guidelines. The plans include:
 - Inter-County Physical and Land Use Development Plans for Metropolitan regions, conservation zones, river basins, water towers, coastal ecosystems, trans-boundary resource areas and transport corridors, among others.
 - County Physical and Land Use Development Plans.
 - Local Physical and Land Use Development plans for Cities, Urban areas, special area plans, subject plans and detailed neighbourhood plans, among others.
 - Sectoral plans
2. Integration of the guideline policies, strategies and measures into the County sector plans, programs and projects. Ministries, Departments and Agencies (MDAs), County and National Departments identified in the plan to administer the

policies, strategies and measures are required to translate them into action plans, programmes and projects and to include them in their subsequent sector plans.

3. Formulation of policies, regulations and standards to guide development control

5.3 Implementation Framework

The implementation of the various policies, strategies, measures, programmes and projects under these Guidelines will involve a wide range of actors. It will require a coordinated approach and partnership between the National and County Governments and non-state actors. It may require re-engineering of institutions and a number of actors to undertake the implementation through a harmonized approach.

The National Spatial Plan identified a multi-leveled framework for implementation of the plan that incorporates all levels of actors. In this regard, the institutions identified in the NSP to undertake implementation of the plan at County-level shall also be mandated to ensure implementation of this Guidelines.

The following are the Institutions mandated to ensure implementation of the County Specific guidelines;

5.3.1 County Physical Planning Committee

The role of the County Planning Committee shall be to ensure aspirations of the guidelines are articulated in preparation of the County Spatial Plans, County Integrated Development Plans and Local Physical and Land Use Development Plans.

The composition of this committee consists of;

- i. The Governor who will be the Chairperson,
- ii. the Deputy Governor,
- iii. the County Executive Committee Members from various sectors
- iv. Directors from various relevant County Departments including Lands and Physical Planning, Economic planning, Agriculture, Industrialization, Tourism, Environment, Transport and Infrastructure

The functions of the committee include;

- 1) To promote effective integration between physical, economic and sectoral planning within the framework of county development policies.

- 2) To provide policy guidance for the implementation of strategic spatial projects
- 3) To ensure that the guidelines policies and measures are mainstreamed in the various county plans.
- 4) To mobilize resource for implementation of the Guidelines.

5.3.2 County Planning Unit (CPU)

The technical Unit shall provide technical support to the various implementing County departments on issues relating to physical planning.

The CPU shall;

- i. Monitor the Implementation of the guidelines.
- ii. To disseminate components of the guidelines to the various county departments.
- iii. Update the County Physical Planning Committee on a regular basis on the implementation of the guidelines.

The County Director of Physical Planning shall be responsible for preparation of an annual state of planning report which shall among other things appraise the status of implementation of the guidelines.

5.3.3 National Land Commission

The National Land Commission shall play its oversight role in land use planning to ensure efficient implementation of the NSP and the guidelines. Other functions of the Commission in the implementation of the NSP and the guidelines include the following: - To formulate mechanisms and parameters for monitoring and overseeing land use planning.

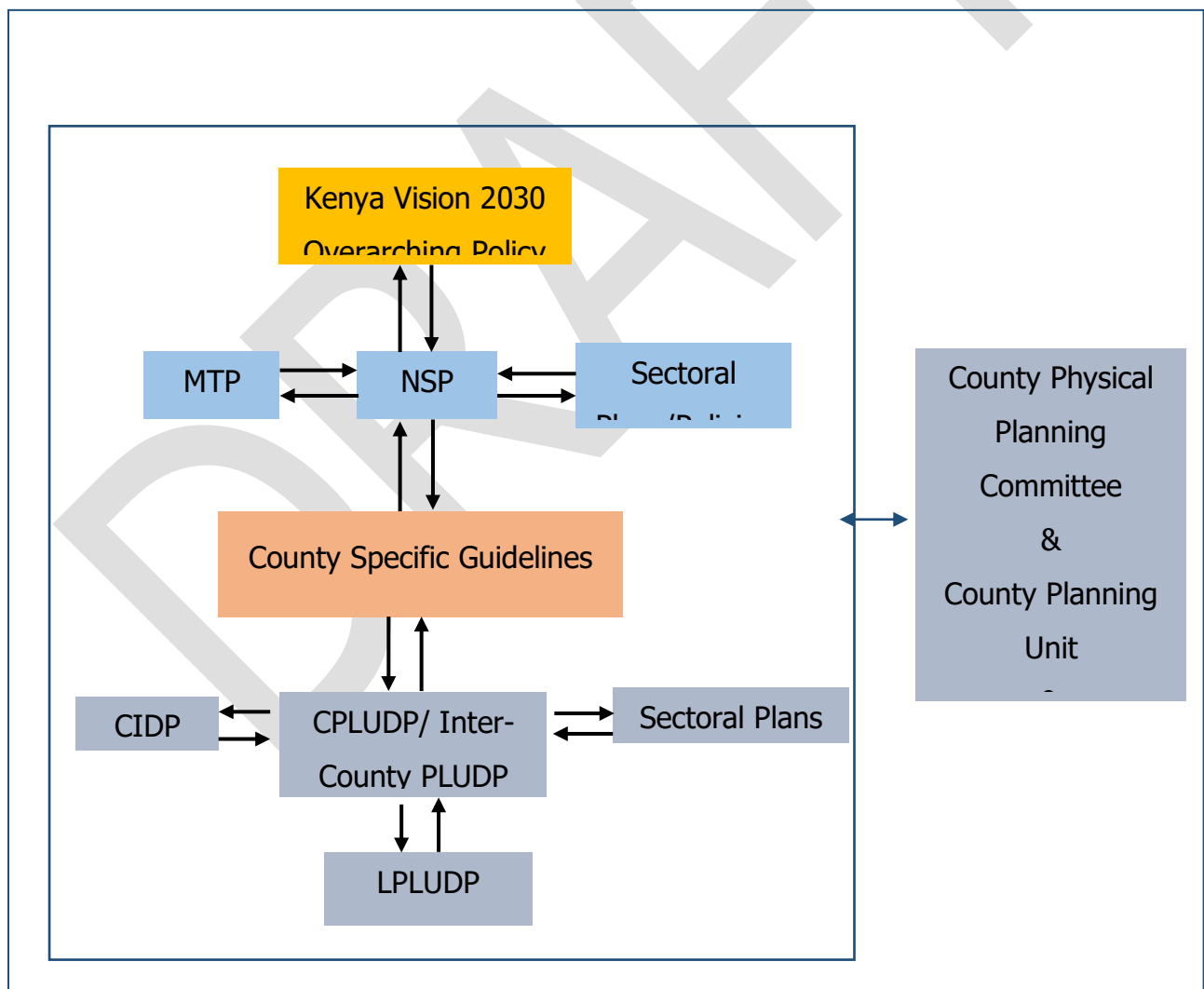
- i. To ensure that relevant planning authorities carry out their functions as required by law.
- ii. To make recommendations for improvements of the planning systems in the county.
- iii. To mobilize resources to support physical/land use planning.

5.4 Monitoring and Evaluation

Implementation of the guidelines will be monitored and evaluated to measure both outputs and outcomes and ensure that the intended actions are implemented in a timely manner. To facilitate attainment of the objectives of the guidelines, performance indicators will be developed by the County Physical Planning Department for efficient monitoring. Periodic reports will be prepared in relation to progress being made in their implementation.

The graphic below illustrates the implementation structure for County Specific guidelines.

Figure 4: Implementation structure of the guidelines



Source: State Department for Physical Planning, 2022

5.5 Conclusion

The application of these guidelines will be undertaken by a number of actors and hence the need for a coordinated approach. The lead agency will be Siaya County Government which will be responsible for implementing various county specific initiatives proposed by the guidelines.

The National Government, County Government of Siaya, the private sector and the general public will be critical in actualizing the objectives of these guidelines. The County Physical Planning Committee shall develop a communication strategy to enhance the synergies.

The National Department of Physical Planning shall undertake sensitization, training and capacity building of the County Government and National Government institutions and agencies that will be involved in the implementation of these guidelines. Special attention will be given to the County physical planning units, as they will be expected to provide technical expertise in the implementation of the County specific policies and strategies.