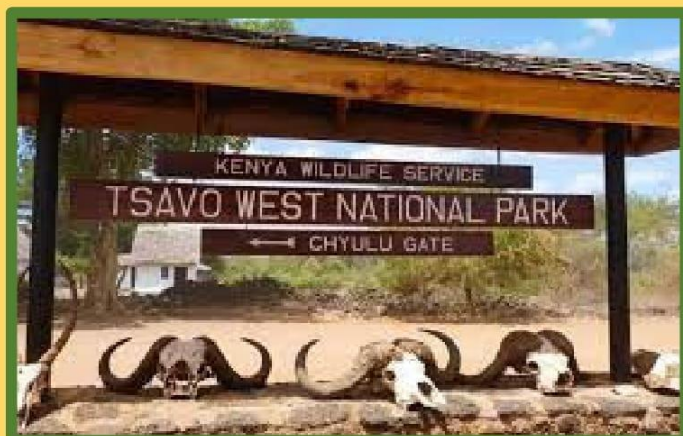




# NATIONAL SPATIAL PLAN IMPLEMENTATION GUIDELINES FOR TAITA TAVETA COUNTY

Optimal Productivity, Sustainability, Efficiency and Equity in the use of our  
Land and Territorial Space



MINISTRY OF LANDS AND PHYSICAL PLANNING  
STATE DEPARTMENT FOR PHYSICAL PLANNING

© 2022

## **FOREWORD**

The Constitution of Kenya apportions responsibility of planning to both National and County Governments. Under the Fourth Schedule on distribution of functions, Part 1 (21) and (32) mandates the National Government with the responsibility of formulating general principles of land planning, co-ordination of planning by the Counties, capacity building and technical assistance to the Counties. On the other hand, Part 2(8) allocates the function of County planning and development to County Governments. It is under these provisions that the County specific guidelines have been prepared.

The Department of Physical Planning prepared the National Spatial Plan (NSP) in response to the Kenya Vision 2030 to guide the spatial development of the country over a period of 30 years beginning in 2015.

It aims at achieving an organized, integrated, sustainable and balanced development of the country by providing a framework for better national organization and linkages between different activities within the national space.

To implement the Plan, the Counties are expected to play a key role by mainstreaming strategies, policies, and measures identified in the NSP into the County spatial planning systems.

The guidelines have identified planning policies, strategies, and measures that Plans at the County level are expected to mainstream and propagate. The policies address among others, the protection of rich agricultural land, development imbalances, conservation of environmentally sensitive areas, urban containment, and promotion of industrial development.

The guidelines provide direction on the existing potentials, the opportunities, the constraints/challenges inhibiting harnessing of the potentials, the strategies to apply, respective policies required, and the necessary measures to achieve optimal productivity, sustainability, efficiency and equity in the use of county land resources.

The guidelines are an opportunity on how best to refocus, vary and complement areas that require different approaches responding to country-specific needs and promote the livelihoods of their people, while contributing to the national aspirations of vision

2030, regional objectives of the Africa Agenda 2063, and international targets of sustainable development. The refocusing will also be handy in reviewing and making decisions on NSP which is due for review in 2025.

These guidelines are therefore a tool for enhancing this critical path and provide a direction for development planning by the Counties as they discharge their responsibility of preparing county and local physical and land use development plans. The guidelines will also ensure that the County Integrated Development Plans conform to the proposed County specific policy guidelines and measures.

DRAFT

## **PREFACE**

The National Spatial Plan (NSP) recognizes that Kenya is greatly endowed with massive and diverse resources distributed over the national space that require an integrated and coordinated approach for optimal productivity and sustainability.

The County Specific Guidelines have been derived from the National Spatial Plan and provide a planning framework for the integration of the NSP into the county spatial planning system. They are clear statements linking the National Spatial Plan to Inter-County, County and lower-level Physical and Land Use Development Plans and provide clarification on the anticipated sustainable development outcomes of implementing the Plan.

The County Government will adopt, develop and implement their plans based on the policies, strategies, and measures articulated in the guidelines. The realized county plans are expected to guide, harmonize and facilitate development within the county, hence contributing to the overall implementation of the NSP.

The guidelines also form an efficient compass and monitoring tool for National and County Governments to jointly pursue sustainable planning and appropriate implementation mechanisms.

For the county to be nationally competitive, there is need to balance development and promote optimal utilization of land and land-based resources as well as cultivate an integrated approach in addressing the intertwined challenges of regional imbalances/inequalities, rural development, underutilization of the available resources, uncontrolled urbanization, environmental degradation and inefficient transportation. It is imperative therefore, to prioritize the implementation of this strategic document so as to promote balanced development and competitiveness across the County.

## **EXECUTIVE SUMMARY**

The County Specific Guidelines seek to facilitate the implementation of the National Spatial Plan by outlining policies, strategies and measures to guide County spatial planning and development and promote optimal productivity, sustainability, efficiency and equity in the use of land. They provide a framework for preparation of lower level Plans including Inter-County, County and Local Physical and Land Use Development Plans.

The disconnect between National and County Spatial Planning and development has resulted in uncoordinated and unbalanced development, therefore creating a need for a clear structure that links National, Regional and Local planning and development. This is achievable through integration of the policies, strategies and measures proposed by the guidelines into County Spatial Plans, Programs and Projects, to tackle challenges of unbalanced regional development, urbanization, national competitiveness and unsustainable use of land and natural resources.

The County Specific Guidelines are organized into five chapters detailing various facets. Chapter one provides an overview, purpose and justification of preparation of the guidelines. It also outlines the objectives that the guidelines intend to achieve and details the preparation process as well as intended users. This chapter highlights the key principles that form the basis for preparation of lower level plans including public participation, livability, sustainable development, urban containment, smart urban growth among others.

Chapter two details the legal and policy provisions that the guidelines are anchored upon. They include, among others, The Constitution of Kenya, 2010, The Physical and Land Use Planning Act No.13 of 2019, County Government Act, 2012, Environmental Management and Coordination (Amendment) Act, 2015, Sessional Paper No. 01 of 2017 on National Land Use Policy and Sessional Paper No. 10 of 2012 on Kenya Vision 2030.

The third chapter analyses the county profile, detailing its location, size, bio-physical characteristics, socioeconomic status and the County's comparative advantage in relation to others. The locational context provides information on the geographical

position and bordering Counties while the biophysical context discusses the topography, hydrology and climate. The socioeconomic status indicates key economic drivers of the County and its population and demographic structure.

Chapter four presents the County specific issues and proposes development strategies to promote national competitiveness, optimal use of land and resources, rural development, balanced intra-county development and urbanization.

Additionally, it provides policy guidelines and measures for County advancement.

The final chapter five focuses on implementation and adoption of the guidelines. The implementation framework identifies institutions, County development programs and projects, and further ties them with responsible actors, resources and timeframes for effective execution. It proposes a framework for ensuring that the outlined policies, strategies and measures are adequately implemented.

DRAFT

## TABLE OF CONTENTS:

FOREWORD.....	ii
PREFACE .....	iv
EXECUTIVE SUMMARY.....	v
1 INTRODUCTION .....	1
1.1 Background .....	1
1.2 Purpose .....	1
1.3 Objectives .....	2
1.4 Scope .....	2
1.5 Justification .....	3
1.6 Application of the Guidelines .....	3
1.7 The Process of preparing the Guidelines .....	4
1.8 Targeted users .....	4
1.9 Key Principles .....	7
2 THE POLICY, LEGAL AND PLANNING FRAMEWORK FOR THE GUIDELINES.....	8
2.1 Constitutional context.....	8
2.2 Policy Context.....	8
2.2.1 Sessional Paper No. 10 of 2012 on Kenya Vision 2030 .....	8
2.2.2 Sessional Paper No. 01 Of 2017 on National Land Use Policy .....	8
2.3 Legal Context .....	9
2.3.1 The Physical and Land Use Planning Act, 2019.....	9
2.3.2 County Governments Act, 2012 .....	9
2.3.3 The Urban Areas and Cities (Amendment) Act, 2019 .....	9
2.3.4 Environmental Management and Coordination (Amendment) Act, 2015.....	9
2.3.5 National Land Commission Act, 2012.....	10
2.4 Planning Context.....	10
2.4.1 National Spatial Plan (NSP) .....	10
2.4.2 NSP linkage to other plans .....	11
3 COUNTY PROFILE .....	13
3.1 Overview.....	13
3.2 Location Context.....	13
3.3 Bio-physical Context.....	15
3.4 Socio-economic Background .....	16
3.5 County’s comparative advantage .....	18
4 DEVELOPMENT STRATEGIES AND POLICY GUIDELINES FOR TAITA TAVETA COUNTY	19
4.1 County Specific Issues and Development Strategies .....	19
4.2 National Spatial Plan Policy Guidelines for Taita Taveta County .....	27

5	IMPLEMENTATION AND ADOPTION OF THE GUIDELINES .....	39
5.1	Overview.....	39
5.2	Implementation Channels .....	39
5.3	Implementation Framework .....	39
5.3.1	County Physical Planning Committee.....	40
5.3.2	County Planning Unit (CPU).....	41
5.3.3	National Land Commission .....	41
5.4	Monitoring and Evaluation .....	41
5.5	Conclusion.....	43

DRAFT

## List of Figures

Figure 1: The scope of the Guidelines .....	3
Figure 2: Policy Focus of the NSP .....	11
Figure 3: NSP Linkage to other Plans .....	12
Figure 4: Implementation structure of the guidelines .....	42

## List of Tables

Table 1: Targeted Users of the Guidelines .....	5
Table 2: Taita Taveta County Population Projections .....	16
Table 3: County Specific issues and Development Strategies.....	20
Table 4: NSP Policy Guidelines for the County .....	28

## List of Maps

Map 1: Location of the County .....	14
Map 2: The Existing Situation in Taita Taveta County .....	17
Map 3: NSP Proposals .....	38

DRAFT

# **1 INTRODUCTION**

## **1.1 Background**

The County Guidelines set out policies, strategies and measures that will guide the long-term spatial development of the county for a period of 30 years. They cover the entire county and defines the general trend and direction of its spatial development.

The guidelines have been developed in line with the four thematic areas as outlined in the NSP. They provide a guide to the Planning Authority at the county on how to incorporate the NSP policies, strategies and measures during the preparation of County Spatial Plans and other lower-level plans like the Local Physical and Land Use Development Plans consequently implementing the NSP.

The NSP County Specific implementation guidelines summarize the County's existing potentials and opportunities, the constraints (challenges) inhibiting harnessing of the potentials, the applicable strategies and respective policies required, and the necessary measures to achieve optimal productivity, sustainability, efficiency and equity in the use of the county land resources. They act as a reference point.

## **1.2 Purpose**

The purpose of the County Specific Guidelines is to provide a planning framework for mainstreaming of the National Spatial Plan to the County spatial planning system.

The guidelines are intended to assist the County enhance the implementation of the NSP by linking the proposed county specific policies, strategies and measures into the County plans, programs and projects while putting measures in place for achieving them. The guidelines inform preparation of various County Physical Plans such as the County Physical and Land Use Development Plans.

For optimal implementation of these plans, a County Integrated Development Plan (CIDP) is essential since it is a sectoral and budgetary based plan that draws its implementation programs and projects from the County Physical Plans.

### **1.3 Objectives**

The guidelines provide policies and strategies to deal with challenges of regional imbalances/inequalities, rural development, underutilization of the available resources, urbanization, environmental degradation and inefficient transportation.

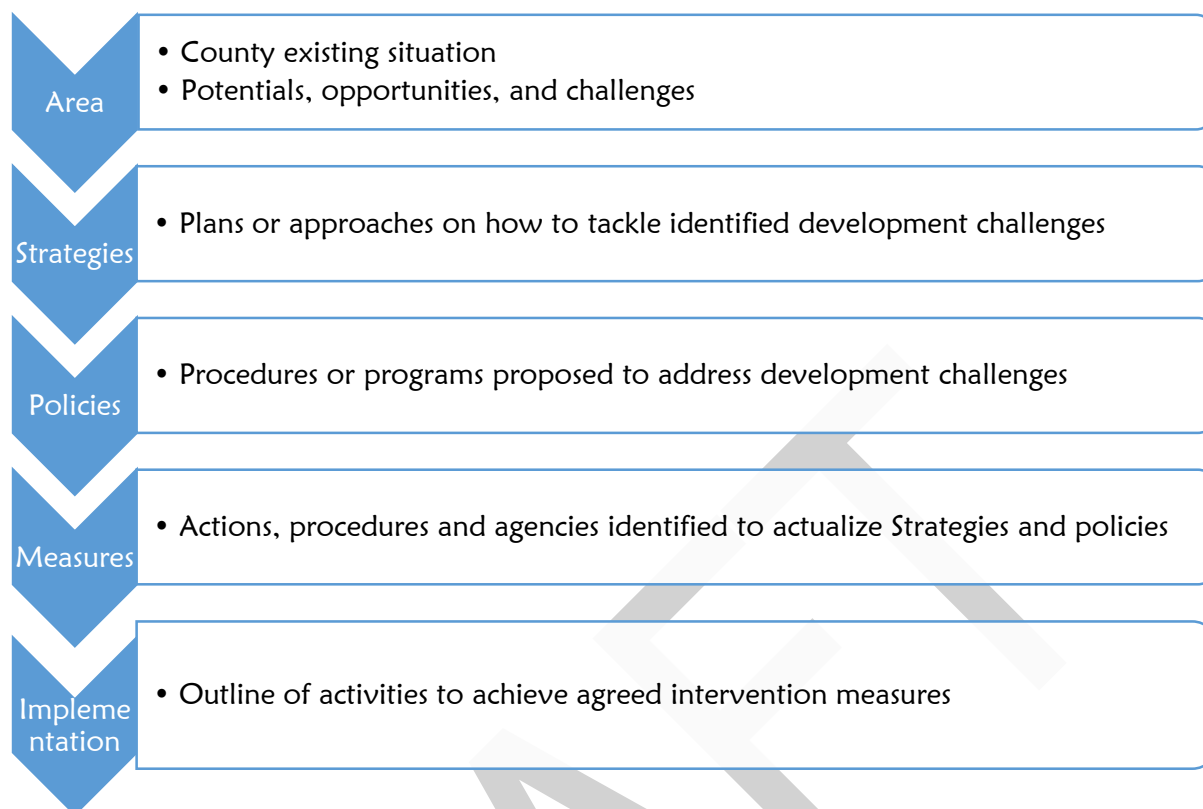
Specifically, the objectives are;

- To sensitize the County on the provisions of the NSP
- To promote synergy between National and County planning
- To guide the County in the implementation of the NSP
- To clarify the roles of the different actors in the implementation of the NSP.

### **1.4 Scope**

The guidelines and strategies are specific to Taita Taveta County and cover the entire territory of the county measuring approximately 17,152Km<sup>2</sup>. The guidelines highlight key facets which include challenges, actions, approaches, plans and procedures prescribed to address the challenges and outline of activities to execute agreed interventions as captured in the National Spatial Plan, as indicated in Figure 1 below. These guidelines shall be operational until the year 2045.

**Figure 1: The scope of the Guidelines**



**Source: State Department for Physical Planning, 2022**

### **1.5 Justification**

Preparation of County Spatial Plans and other lower-level plans which is a mandate of the Counties has been slow and, in some Counties, has not begun at all. These guidelines are therefore a quick reference on how counties can optimize land even in the absence of these plans.

Since the approval and launch of the NSP, its implementation has been undertaken in an uncoordinated manner hence the guidelines will provide standardized approach for all Counties. The guidelines are also an important tool for tracking and evaluating implementation of the NSP both at National and County levels.

### **1.6 Application of the Guidelines**

The guidelines and strategies will be used or applied in the following ways to achieve a more sustained and coordinated development of the county;

- To effectively coordinate planning between the National and the County Government;

- To improve County Government capacity to formulate, coordinate and implement integrated development policies and programmes to address spatially unbalanced development;
- To inform strategic infrastructure policy and public investment decisions which support the achievement of balanced development in the County;
- To strengthen County inter-sectoral coordination within a spatial framework and provide the private sector with a clear context in which they can make investment decisions;
- To optimize the use of land and natural resources by providing a framework for making sustainable locational choices for sustainable development and conservation of land productivity in the County.

### **1.7 The Process of preparing the Guidelines**

The process involved reviewing the National Spatial Plan and identifying key issues, spatial policies, development strategies and measures specific to Taita Taveta County. These key issues, spatial policies, development strategies and measures will be realized through preparation of County and other lower-level plans.

Research was undertaken on various thematic areas to enrich the County specific issues and development strategies as well as policy guidelines and measures/interventions. Further, preparation of the guidelines considered the constitutional, policy and legal provisions on physical and land use planning. Expert opinion was sought on the identified issues, policies, measures and strategies for implementation viability.

The preparation of the guidelines was identified as one of the implementation tools of the NSP, in which key NSP issues, policies, strategies and measures were translated into specific action plans, programs and projects at the County level.

### **1.8 Targeted users**

Table 1 below indicates the targeted users of these guidelines and the appliance for each among other uses.

**Table 1: Targeted Users of the Guidelines**

<b>User</b>	<b>Application</b>
County Executive Committee Member in charge of Physical and Land Use Planning	<ul style="list-style-type: none"> <li>• Preparation of county and lower-level plans</li> <li>• Linkage of planning structures</li> <li>• Quality control of the various county plans</li> <li>• Formulate county planning policies and strategies</li> <li>• Establish county planning institutions</li> <li>• Coordinate and implement county plans and policies</li> </ul>
The County Director of Physical and Land use planning	<ul style="list-style-type: none"> <li>• Advising the county government on the impact of the county specific guidelines to the county</li> <li>• Preparation of county physical and land use development plans and other lower level plans</li> <li>• Formulating county physical and land use planning policies, guidelines, strategies, and standards;</li> <li>• Issuance of development permission and other development control instruments under The Physical and Land Use Planning Act, 2013.</li> </ul>
Licensed physical and land use planners both in public and private sectors	<ul style="list-style-type: none"> <li>• Prepare, coordinate and implement spatial plans</li> <li>• Quality control of plans and consultancy services</li> <li>• Formulate policies, strategies and development guidelines</li> <li>• Dispute resolution</li> </ul>
County assembly	<ul style="list-style-type: none"> <li>• Approval of planning budgets</li> <li>• Vetting of various county plans</li> <li>• Formulation and passing of county planning legislation</li> <li>• Enhance capacity to oversee the executive on spatial planning</li> </ul>
Ministries, departments and agencies	<ul style="list-style-type: none"> <li>• Development of relevant policies, strategies, standards, guidelines, programs, and projects</li> <li>• Understand processes, procedures and linkages in spatial planning requirements</li> </ul>
The National Land Commission (NLC)	<ul style="list-style-type: none"> <li>• Oversight role in land use planning to ensure efficient implementation of the NSP</li> <li>• Ensure relevant planning authorities carry out their functions as required by the law</li> </ul>
Practitioners in the built environment	<ul style="list-style-type: none"> <li>• Advance of relevant policies, strategies, standards, guidelines, programs, and projects</li> <li>• Applying processes, procedures and linkages of the NSP in their respective areas of practice</li> </ul>

Community, developers and investors	<ul style="list-style-type: none"> <li>• Comprehend the processes, procedures and requirements of various County Plans and Policies</li> <li>• Linkages of spatial planning and implementation</li> <li>• Informed investment decisions</li> </ul>
Development partners	<ul style="list-style-type: none"> <li>• Reference frame for funding spatial planning activities</li> <li>• Understand planning linkages and implementation</li> <li>• Informed development decisions</li> </ul>
Training institutions	<ul style="list-style-type: none"> <li>• Compliment the curriculum for training of Spatial Planners</li> <li>• Understand the planning procedures and processes</li> </ul>

DRAFT

## 1.9 Key Principles

The principles, as applied in the NSP, should guide and form the basis upon which the lower-level physical and land use plans shall be prepared. Further the principles should ensure sustainable, coordinated, and realistic development. They include the following:

- 1 **Effective Public participation/engagement:** All plans shall be prepared in a participatory and consultative manner with relevant stakeholders and sectoral actors.
- 2 **Urban containment/Compact cities:** Local plans shall strive to limit and control urban growth within the set urban boundaries to protect rich agricultural land, mitigate urban sprawl and reduce cost of infrastructural provision.
- 3 **Livability:** The planning of urban areas shall enhance the livability index in the area of housing, environment, transportation, health, and social engagement. The urban areas must be economically viable, socially inclusive and ecologically sustainable.
- 4 **Smart and green urban growth:** Plans shall promote sustainable use of energy, creation of green spaces, reduce the need for car travel, and promote use of local materials, support businesses, protection of heritage and creation of unique character.
- 5 **Sustainable development:** Balancing social, economic and environmental dimensions of development and catering for current and future generations.
- 6 **Promotion of ecological integrity:** Plans shall promote the protection and conservation of environmentally sensitive areas.
- 7 **Promote public transportation:** Favor public transportation over private transport to ensure efficiency and functionality of urban places.
- 8 **Balanced development:** Plans to ensure there/ is balanced development in the County to cure inequalities.

## **2 THE POLICY, LEGAL AND PLANNING FRAMEWORK FOR THE GUIDELINES**

### **2.1 Constitutional context**

The formulation of these guidelines took into account the Constitution of Kenya 2010 aspirations and Principles. Article 66 of the Constitution of Kenya 2010 gives the State powers to regulate use of any land and property in the interest of land use planning among others. The Fourth Schedule of the Constitution assigns the National Government the role of capacity building and technical assistance to the Counties. The guidelines are therefore within and in response to the aspirations, values and principles as provided for in the constitution.

### **2.2 Policy Context**

#### **2.2.1 Sessional Paper No. 10 of 2012 on Kenya Vision 2030**

Kenya Vision 2030 is the overarching national development framework which all plans should be aligned to. The preparation of all spatial plans should take cognizance of the aspirations, foundations and development concepts of the vision. The preparation of the first National Spatial Plan is identified in Kenya Vision 2030 as a flagship project and is regarded as one of the foundations for socio-economic transformation. Hence the need for linkage between national planning and county planning which can be achieved through mainstreaming NSPs into CSPs and other lower-level plans by preparing NSP county specific guidelines to implement the NSP at lower levels.

#### **2.2.2 Sessional Paper No. 01 Of 2017 on National Land Use Policy**

The policy was formulated to address the various challenges related to land use and ensure efficient, productive and sustainable use of land. The main goal of the policy is to provide legal, administrative, institutional and technological framework for optimal utilization and productivity of land related resources in a sustainable and desirable manner at national, county and community levels.

The policy recommends the preparation of a National Spatial Plan to provide an integrated framework for the development of the country including guidelines for sustainable rural and urban planning management. The policy also provides for the

preparation of planning guidelines, policies and standards to be observed by County Governments and other sectoral agencies within the frameworks of approved physical and land use development plans. These guidelines have been prepared on this basis and they are to be observed by counties in the implementation of the National Spatial Plan.

## **2.3 Legal Context**

Various Acts of Parliament are in place to provide the legal framework for the implementation of the mandate provided for in Article 66 of the Constitution. The Physical and Land Use Planning Act, 2019, The Urban Areas and Cities (Amendment) Act, 2019, County Governments Act No. 17 of 2012, The Land Act No. 6 of 2012, National Land Commission Act No. 5 of 2012 among others. The NSP County specific guidelines are prepared in this context and meet this criterion.

### **2.3.1 The Physical and Land Use Planning Act, 2019**

This is the overarching statute that provides for formulation of both national and county physical and land use planning policies, guidelines and standards. The Act further provides for administration, types, content, process and approval of the various types of Physical and Land Use Development Plans.

### **2.3.2 County Governments Act, 2012**

This statute mandates County Governments to carry out the planning function at the county level. The guidelines enhance the capacity to prepare the various county level plans that meet the recommended quality and standards.

### **2.3.3 The Urban Areas and Cities (Amendment) Act, 2019**

The statute provides for classification of urban areas and cities, their governance and management, and for integrated development planning. The guidelines are a basis for preparation of these lower-level plans.

### **2.3.4 Environmental Management and Coordination (Amendment) Act, 2015**

The Act provides for the establishment of an appropriate legal and institutional framework for the management of the environment as well as guidelines relating to

environmental management and prevention or abatement of environmental degradation. The guidelines take cognizance of this Act and will be implemented within the framework.

### **2.3.5 National Land Commission Act, 2012**

The Act mandates the National Land Commission with the management and administration of public land on behalf of the National and County Governments as well as to monitor and oversight physical and land use planning in the country. The guidelines fall within the ambit of this statute and will facilitate their oversight responsibilities.

## **2.4 Planning Context**

### **2.4.1 National Spatial Plan (NSP)**

The National Spatial Plan (NSP) covers the whole country encompassing the forty-seven (47) counties and the Exclusive Economic Zone. The NSP outlines policies and strategies as indicated in Figure 2 below, geared towards influencing desired future distribution and organization of population and activities outlined in vision 2030 and sectoral policies and plans. It aims at achieving economic efficiency and balanced development. The various County Spatial Plans should be aligned to the policies outlined in the NSP as demonstrated in Figure 2 below:

**Figure 2: Policy Focus of the NSP**



**Source: National Spatial Plan, 2015-2045**

To actualize the NSP a comprehensive implementation strategy has been proposed that embraces a multiplicity of actors including National Government Ministries, Departments and Agencies, County Governments and the National Land Commission. The strategy proposes the establishment of the following institutions as key in the implementation of the Plan; The National Physical Planning Council, the National Technical Committee and the County Physical Planning Committee.

#### **2.4.2 NSP linkage to other plans**

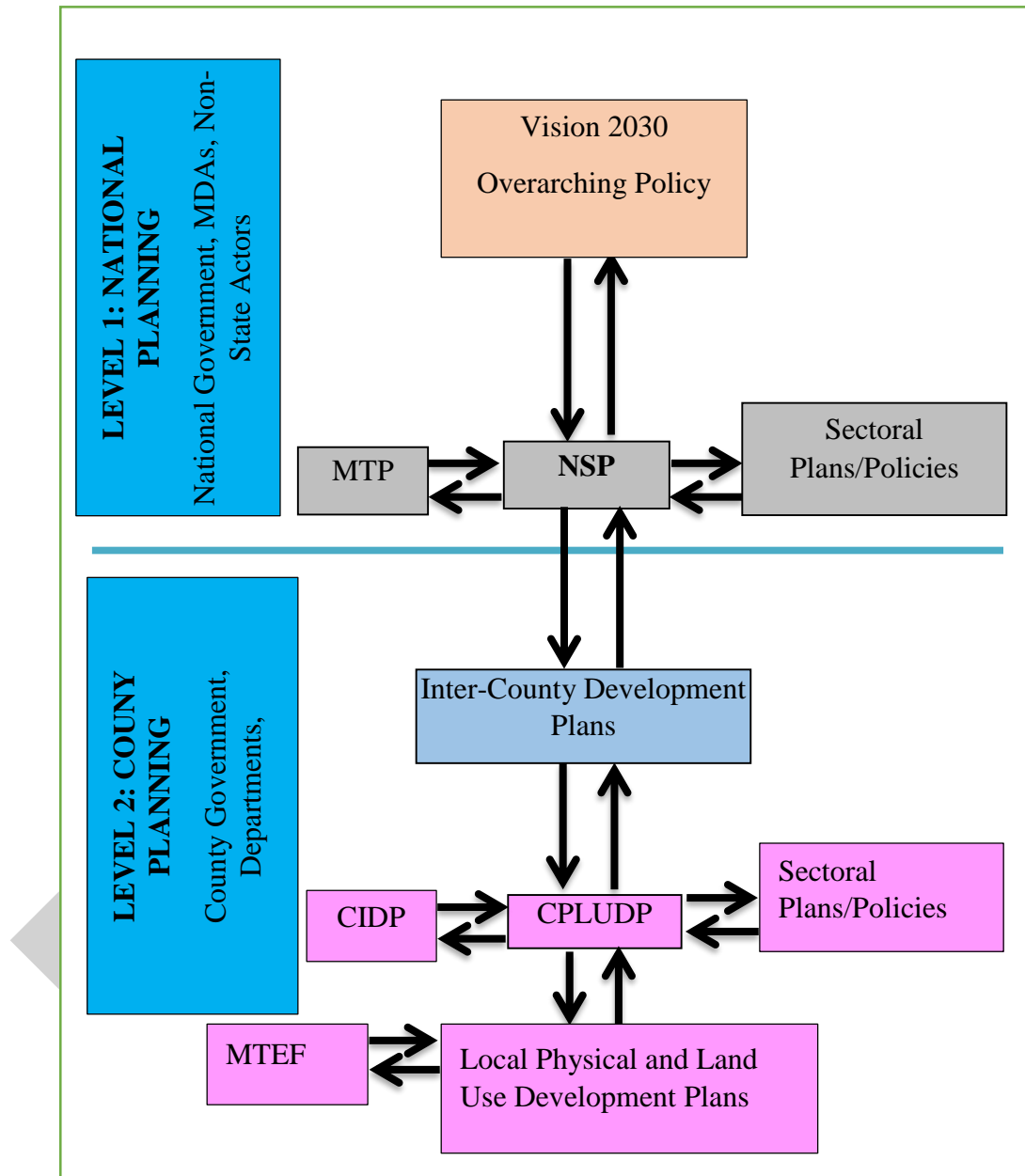
The linkage of the National Spatial Plan (NSP) to county and other lower-level plans is key to realization of its aspirations and the successful actualization of these plans. The NSP provides a spatial framework to ground the Vision 2030 flagships projects and form a basis for coordination of County policies, strategies, measures and plans.

Inter County and County plans take into considerations the policies, measures and strategies of the NSP and implements them actualizing its aspirations.

County Physical and Land Use Development Plans provide a framework where the CIDP draws its programs and projects. The implementation of the CIDP in turn leads to realization of the objectives of the County Physical and Land Use Development Plan.

Figure 3 below illustrates the Country's planning linkage.

**Figure 3: NSP Linkage to other Plans**



*Source: The National Spatial Plan, 2015*

### **3 COUNTY PROFILE**

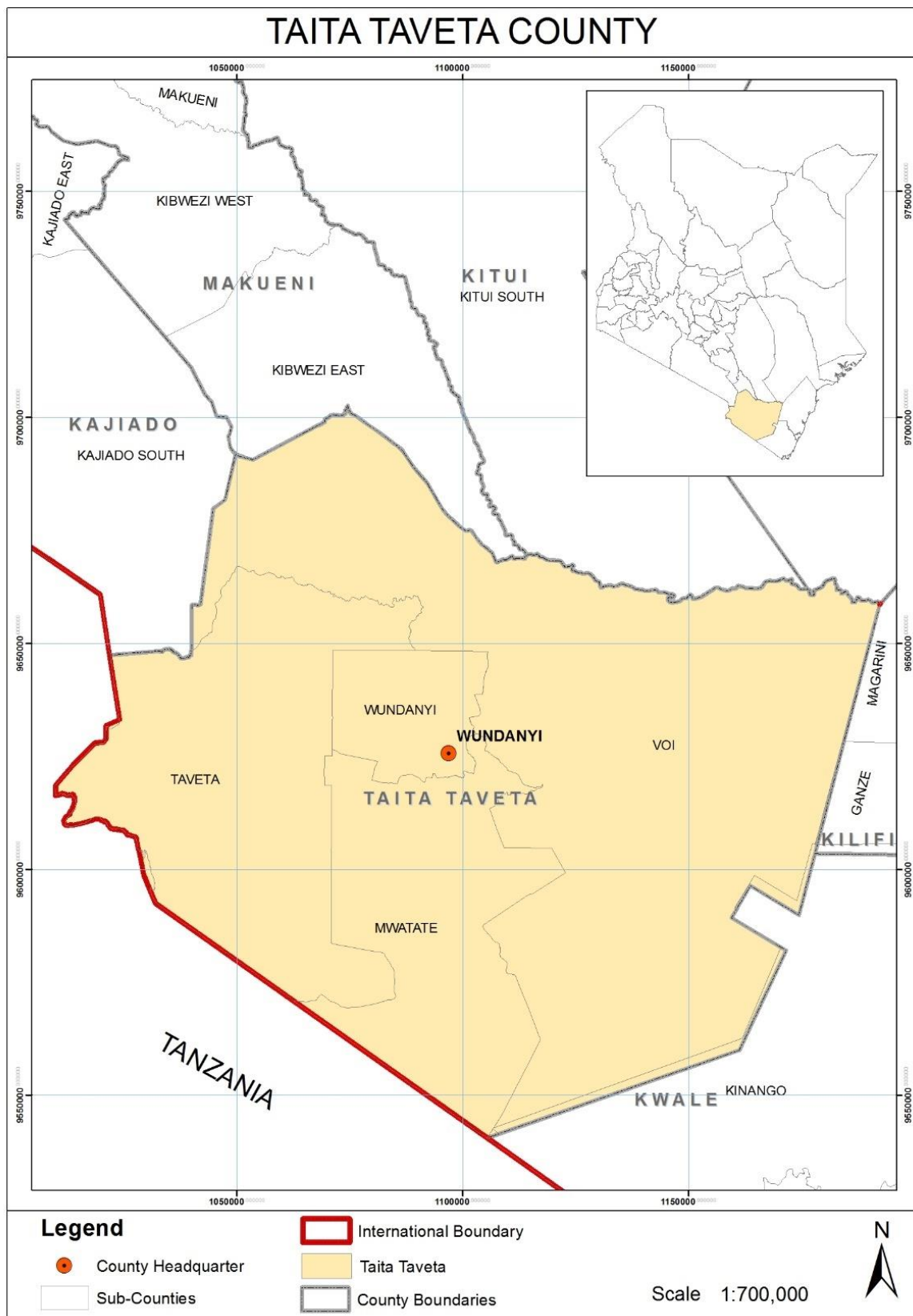
#### **3.1 Overview**

This chapter discusses a set of relevant information about Taita Taveta County. It provides information on the location of the County, size, bio-physical features, socioeconomic status and looks at the comparative advantage of Taita Taveta County as compared to other Counties of Kenya.

#### **3.2 Location Context**

Taita Taveta County lies approximately between longitude  $37^{\circ} 36'$  East and  $30^{\circ} 14'$  East and latitude  $2^{\circ} 46'$  South and  $4^{\circ} 10'$  South. Located in the coastal region, it is approximately 200km North West of the coastal city of Mombasa and 360km South East of Nairobi. The County covers a total area of 17,152.1Km<sup>2</sup>. 10,649.9 Km<sup>2</sup> (62.3 per cent) is within Tsavo East and Tsavo West National Parks. The county borders Kitui, Makueni and Tana River Counties to the north; Kilifi and Kwale Counties to the east; Kajiado County to the north-west and the Republic of Tanzania to the South. Map 1 below shows the location context of the County.

**Map 1: Location of the County**



**Source: State Department for Physical Planning, 2022**

### 3.3 Bio-physical Context

The topography of Taita Taveta County is classified into three major zones, namely: Upper zone, Lower zone and Volcanic foothills. The Upper zone comprises Mwambirwa, Taita and Sagalla hills regions. The altitudes in this zone ranges from 304 meters to 2, 208 meters above sea level. The zone is suitable for horticultural farming. The Lower zone includes plains where the national parks, mines and ranches are found. The Volcanic foothills zone covers the Taveta region with underground water and springs sourcing from Mt. Kilimanjaro.

The ecological zones in the County are determined by the climatic conditions and the relief. Taita Hills which covers about 1000Km<sup>2</sup> with an altitude raising upto 2,208m above sea level (at Vuria Peak) forms the highlands. The Taita Hills forests, commonly referred to as the "Cloud Mountain Forests", harbour several endemic plant and animal species.

The vast rangeland covering Tsavo National Park is located in the lowlands and transitional zone. It forms the Tsavo Ecosystem which is constituted of plains, wildlife, springs, rivers and vegetation. The park is an open savannah and bush woodland supporting the famed 'big five' quintet of lions, elephants, buffaloes, rhinos and leopards as well as antelopes, giraffes, zebras and a host of bird life.

Taita Taveta County is mainly dry, with the exception of Taita Hills which are considerably wet. The south-easterly winds influence climate in the area, whereby hilly areas have ideal conditions for moisture condensation which then results in relief rainfall.

Long rains are usually experienced between March and May – where on average, highlands record 265 mm as opposed to the 157 mm in lowlands. Short rains are anticipated between October and December, with annual rainfall being recorded at 1,200 mm (highlands) and 341 mm (lowlands). Rainfall distribution is usually uneven, with higher rainfall amounts being recorded in highland areas as compared to the lowlands. Annually, mean rainfall is 650 mm.

Average temperature in Taita Taveta County is 23<sup>0</sup>C, with lows of 18<sup>0</sup>C in hilly areas (Sagalla, Taita and Mwambirwa) and rising to about 25<sup>0</sup>C in lower zones.

### 3.4 Socio-economic Background

**Demography:** The population of Taita Taveta County was estimated at 340,664 (KNBS 2019) and is projected to rise to 374,705 and 514,714 in 2025 and 2045 respectively, at a mean inter-censal annual growth rate of 1.6 percent. The County has a population density of 20 persons per square kilometer. The population projections are as indicated in table 2 below:

**Table 2: Taita Taveta County Population Projections**

YEAR	2019	2020		2025		2030		2035		2040		2045	
<b>Population size</b>	340,664	346,115		374,705		405,657		439,165		475,441		514,714	
		<i>M</i>	<i>F</i>	<i>M</i>	<i>F</i>	<i>M</i>	<i>F</i>	<i>M</i>	<i>F</i>	<i>M</i>	<i>F</i>	<i>M</i>	<i>F</i>
		1765 19	1695 96	1911 00	1836 05	2068 85	1987 72	2239 74	2151 91	2424 75	2329 66	2625 04	2522 10
<b>Households</b>	97333	98890		107059		115902		125476		135840		147061	
<b>Area</b>	<b>17152</b>	<b>17152</b>		<b>17152</b>		<b>17152</b>		<b>17152</b>		<b>17152</b>		<b>17152</b>	
<b>Density</b>	<b>20</b>	<b>20</b>		<b>22</b>		<b>24</b>		<b>26</b>		<b>28</b>		<b>30</b>	

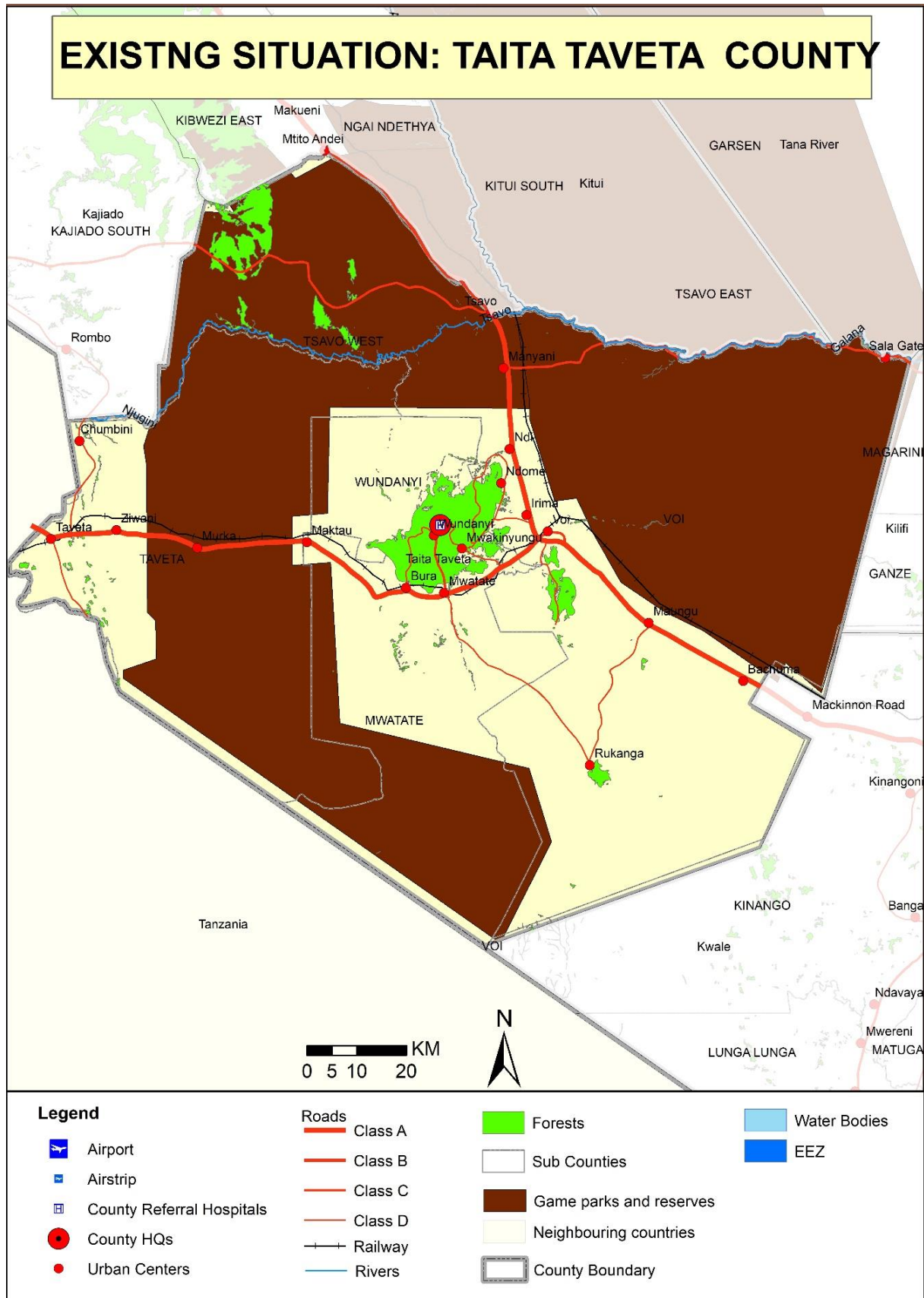
*Source: State Department for Physical Planning*

**Economic activities:** The main driver of economy is agriculture. Residents undertake crop and livestock production for sustenance of their livelihoods. The main crops grown in the county are maize, sorghum, rice, beans, cassava, sweet potatoes and horticultural crops. The main livestock reared in the County include cattle, goats, sheep, camel and poultry. Fishing is also practiced in Lakes Jipe and Challa.

**Infrastructure:** The existing infrastructure in the County includes road network (Mombasa-Nairobi highway, Voi-Taveta Road, Mwatate-Wundanyi Road, Voi-Salaita gate Road and Maungu-Kasigau road.), airstrips, energy access, housing, educational facilities, health facilities, communication and technologies such as the post offices, mobile telephone connections, landline telephones, fibre optic cable connection, radio and television. There exist seventeen airstrips in the County.

The existing situation of Taita Taveta County is indicated in Map 2 below:

**Map 2: The Existing Situation in Taita Taveta County**



**Source: State Department for Physical Planning, 2022**

### 3.5 County's comparative advantage

- a) Agriculture:** Agricultural activities form the main drivers for the County's economy. The County has a high potential for irrigation. However, only 47% of the total irrigable land is currently under irrigation.
- b) Tourism:** The County has immense potential to reap economic gains from tourism activities. It has a wide range of tourist attractions priding itself in being home to Tsavo East and Tsavo West National Parks.
- c) Oil and mineral potential:** The County is endowed with abundant minerals which prompted the construction of a Gemology center in Voi, as well as the establishment of a center for mining in Taita Taveta University.
- d) Airstrips:** The County has a total of 17 public airstrips, located in Taveta (6), Voi (5) and Mwatate (6). The main airstrips are Ikanga, Taveta and KWS. These airstrips when upgraded and well maintained will spur regional economic development.
- e) Railway:** The County is traversed by two railway lines i.e: the defunct colonial railway line; Voi – Taveta Railway line and the decent operational SGR; Mombasa – Voi – Nairobi railway line. The county hosts two of the SGR Terminus Stations at Miasenyi and Voi, with a total of 170km. The SGR has greatly enhanced accessibility to the county for both trade and tourism purposes.
- f) Renewable energy:** The County has a great potential for solar and wind energy which remain untapped.

## **4 DEVELOPMENT STRATEGIES AND POLICY GUIDELINES FOR TAITA TAVETA COUNTY**

### **4.1 County Specific Issues and Development Strategies**

The National Spatial Plan provides strategies for spatial growth and development across the country. The strategies are aimed at providing a spatial expression to Kenya Vision 2030 and other sector policies.

This section seeks to provide strategies for spatial growth and development of the County by addressing the factors that prevent the County from achieving the intended goals and objectives. The development strategies discussed are aimed at managing the global impacts, optimizing use of natural resources, creating a County balance and transforming rural areas.

The following are detailed NSP County-Specific issues and development strategies that apply to Taita Taveta County

**Table 3: County Specific issues and Development Strategies**

<b>Strategy 1: Enhancing National Competitiveness</b>		
<b>Opportunities</b>	<b>Constraints</b>	<b>Strategies</b>
<ul style="list-style-type: none"> <li>✓ Strategic location for cross border trade with the republic of Tanzania</li> <li>✓ Tourism - Location of the National Parks (Tsavo East and West)</li> <li>✓ Proximity to the port of Mombasa</li> <li>✓ Major transportation corridors traverse the County (Standard Gauge Railway, Mombasa-Nairobi-Malaba highway)</li> <li>✓ Regional transport corridor Voi-Taveta-Olili-Moshi</li> <li>✓ Horticulture production (bananas) practiced in Bura</li> <li>✓ Presence of airstrips to reap on trade and investments within the region</li> </ul>	<ul style="list-style-type: none"> <li>✓ High costs of production occasioned by unreliable supply and high costs of energy</li> <li>✓ Inefficient urban transport systems</li> <li>✓ Poor transport linkage between urban and rural areas</li> <li>✓ Inadequate industries for manufacturing and processing the existing wide range of minerals</li> <li>✓ Inadequate exploration of the horticultural industry</li> <li>✓ Underutilization of the airstrips</li> </ul>	<ul style="list-style-type: none"> <li>✓ Harness renewable and green energy sources to increase energy capacity and reduce costs</li> <li>✓ Encourage location of resource-based industries where resources are located</li> <li>✓ Provision of a road network connecting Voi-Taveta-Olili-Moshi</li> <li>✓ Encourage locations of resource-based industries in areas with resource potential</li> <li>✓ Strengthen the horticulture and service industry especially tourism to tap into the horticultural production potential in the County</li> <li>✓ Revamp the underutilized airstrips to transport the horticultural outputs</li> <li>✓ Improve and expand the existing airstrips</li> <li>✓ Enforce development control measures within and around airstrips</li> </ul>

<b>Strategy 2: Optimizing Land and Natural Resources</b>		
<b>Opportunities</b>	<b>Constraints</b>	<b>Strategies</b>
<b>Land and Land Use</b>		
<ul style="list-style-type: none"> <li>✓ Abundant resources e.g., wildlife, minerals</li> </ul>	<ul style="list-style-type: none"> <li>✓ Effects of climate change resulting into harsh climatic conditions</li> <li>✓ Natural disasters e.g., droughts</li> <li>✓ Water scarcity</li> <li>✓ Underutilization of rangeland resource</li> </ul>	<ul style="list-style-type: none"> <li>✓ Formulate policies to tap the capability and potentials of the county and to leverage on the economies of pastoralism</li> <li>✓ Enhance climate change adaptation and desertification mitigation through promotion of climate change resilience projects</li> </ul>
<b>Agriculture</b>		
<ul style="list-style-type: none"> <li>✓ Ability to support large scale livestock farming</li> <li>✓ Availability of water from Njoro Springs and Lake Chala for undertaking agriculture through Irrigation</li> <li>✓ Existence of 40 operational irrigation schemes spread over Mwatate, Wundanyi, Voi and Taveta)</li> <li>✓ Potential for aquaculture and marine culture</li> </ul>	<ul style="list-style-type: none"> <li>✓ Overstocking</li> <li>✓ Use of inappropriate farm inputs and technology</li> <li>✓ Poor agricultural/irrigation support infrastructure</li> <li>✓ Low value addition to agricultural produce</li> <li>✓ Insufficient water supply</li> <li>✓ Lack of adequate equipment and technology to tap fishing potential.</li> </ul>	<ul style="list-style-type: none"> <li>✓ Establish land carrying capacity for livestock</li> <li>✓ Encourage communal ranching</li> <li>✓ Provide incentives and subsidies to farmers to enable them access appropriate inputs and technology</li> <li>✓ Improve transport infrastructure in agricultural areas</li> <li>✓ Establish agro-based industries</li> <li>✓ Harness the use of available potential water resources</li> <li>✓ Mapping out and protecting irrigation corridors</li> <li>✓ Provides subsidies on fishing equipment and undertake research on best fishing practices</li> </ul>
<b>Environment (Conservation Area &amp; Protection Area)</b>		
<ul style="list-style-type: none"> <li>✓ Large scale livestock production – Ranching areas (4,100Km<sup>2</sup>, 24% of total County land area comprises of Rangelands)</li> <li>✓ Areas of unique assemblage of plants and animals</li> <li>✓ Existing water bodies (Lake Chala, Lake Jipe), natural forests,</li> </ul>	<ul style="list-style-type: none"> <li>✓ Soil erosion caused by overstocking</li> <li>✓ Inadequate returns from livestock keeping</li> <li>✓ Ecosystem degradation through logging, poaching, wild fires, overgrazing</li> <li>✓ Deforestation</li> </ul>	<ul style="list-style-type: none"> <li>✓ Strict soil erosion control measures</li> <li>✓ Commercialization of livestock keeping</li> <li>✓ Provide requisite livestock infrastructure eg abattoirs, markets</li> <li>✓ Encourage and adopt modern ranching methods</li> <li>✓ Sensitize the public in matters of carrying capacity</li> <li>✓ Rehabilitation of degraded sites through increasing forest cover</li> </ul>

mountains, parks and conservancies, riverine swamps, Fresh Water Springs (Njoro and Mzima)	<ul style="list-style-type: none"> <li>✓ Encroachment by human settlements and activities</li> <li>✓ Pollution and destruction of riverine ecosystems</li> <li>✓ Drying up of water resources</li> <li>✓ Unsustainable abstraction of water</li> </ul>	<ul style="list-style-type: none"> <li>✓ Facilitate management, conservation &amp; utilization of forest &amp; forestry resource products</li> <li>✓ Conservation and protection of environmentally fragile/ sensitive areas</li> </ul>
<b>Natural resources</b>		
<ul style="list-style-type: none"> <li>✓ Potential for renewable energy (solar and wind)</li> <li>✓ Underground water potential</li> </ul>	<ul style="list-style-type: none"> <li>✓ Inadequate technology and exploitation infrastructure</li> <li>✓ High costs of exploiting available natural resources</li> <li>✓ Uncoordinated and unsustainable exploitation of underground water</li> <li>✓ Inadequate technology and exploration infrastructure</li> </ul>	<ul style="list-style-type: none"> <li>✓ Optimal utilization of the available resource potential</li> <li>✓ Invest in appropriate technology and infrastructure</li> <li>✓ Undertake further exploration of the available resources</li> <li>✓ Develop a framework to guide and regulate the exploitation and use of potential green energy</li> <li>✓ Regulate the exploitation of underground water</li> <li>✓ Optimize the use of underground water</li> <li>✓ Invest in appropriate technology and infrastructure</li> </ul>
<b>Industrial</b>		
<ul style="list-style-type: none"> <li>✓ The County is endowed with abundant minerals</li> <li>✓ Existence of industries</li> <li>✓ Crop and horticultural farming</li> <li>✓ Large scale livestock production</li> </ul>	<ul style="list-style-type: none"> <li>✓ Inadequate supply of land for industrialization</li> <li>✓ Inadequate technology and exploration infrastructure</li> <li>✓ Low investment in industry</li> <li>✓ High energy costs</li> <li>✓ Inadequate transport infrastructure – poor linkage to the markets</li> <li>✓ Insufficient market for finished products</li> <li>✓ Low adoption of technology for value addition</li> </ul>	<ul style="list-style-type: none"> <li>✓ Need for carrying out geological surveys to establish true quantity of mineral deposits</li> <li>✓ Formulate a policy that creates an enabling environment to attract investments in mineral exploration</li> <li>✓ Invest in appropriate technology and infrastructure;</li> <li>✓ Provide appropriate technology to enhance value addition</li> <li>✓ Promote the formation of cooperatives and Saccos to advance marketing</li> <li>✓ Promote assertive marketing campaigns for products both domestically and internationally</li> </ul>
<b>Tourism (Southern Circuit)</b>		
<ul style="list-style-type: none"> <li>✓ Safari tourism (Tsavo East &amp; Tsavo West National Parks)</li> <li>✓ Rich cultural heritage</li> </ul>	<ul style="list-style-type: none"> <li>✓ Human wildlife Conflict</li> <li>✓ Encroachment of human activities into the parks</li> </ul>	<ul style="list-style-type: none"> <li>✓ Mapping out of wildlife migratory corridors</li> <li>✓ Strict enforcement of the existing regulations for safeguarding</li> <li>✓ Open up underutilized sites</li> </ul>

	<ul style="list-style-type: none"> <li>✓ Underdeveloped tourism sites and products</li> <li>✓ Poor/inadequate transport and infrastructural facilities</li> <li>✓ Weak integration of ICT in the development and management of the tourism value chain</li> </ul>	<ul style="list-style-type: none"> <li>✓ Increase and diversify the stock of tourism products based on potential</li> <li>✓ Promote domestic tourism by providing subsidies and incentives</li> <li>✓ Increase conservation of natural and cultural Heritage</li> <li>✓ Provide appropriate infrastructure to link the county to other circuits</li> <li>✓ Invest in ICT infrastructure and capitalize on online marketing</li> </ul>
<b>Transport</b>		
<ul style="list-style-type: none"> <li>✓ Rapid urbanization especially with the advent of devolution</li> <li>✓ Increased trade and investments</li> <li>✓ Availability of crop and horticultural produce</li> <li>✓ Availability of livestock products to be transported to the markets</li> <li>✓ Existence of 17 public airstrips located in Taveta (6), Voi (5) and Mwatate (6)</li> <li>✓ Existing railway lines – Voi to Taveta railway line and the SGR</li> </ul>	<ul style="list-style-type: none"> <li>✓ Poor road surface conditions</li> <li>✓ Lack of integration of the transport system</li> <li>✓ Unexploited regional transport system (Voi – Taveta – Olili - Moshi) A23</li> <li>✓ Inefficient modal split</li> <li>✓ Missing transport links</li> <li>✓ Lack of Non-Motorized and Intermediate Means of Transport (NMIMT)</li> <li>✓ Poor condition the existing airstrips</li> <li>✓ Poor condition of the existing Voi-Taveta railway line</li> <li>✓ Lack of cargo handling equipment</li> </ul>	<ul style="list-style-type: none"> <li>✓ Proper traffic management system for the urban centres</li> <li>✓ Repossess and revert all illegally acquired land for roads infrastructure</li> <li>✓ Preserve and secure adequate land for future transport infrastructure development</li> <li>✓ Upgrading the roads providing access to remote areas</li> <li>✓ Formulate regulations and guidelines to control development along transport corridors</li> <li>✓ Create linkages to agricultural, tourist and urban areas</li> <li>✓ Improve and expand the existing airstrips</li> <li>✓ Enforce development control measures within and around airstrips</li> <li>✓ Upgrading of the railway line</li> <li>✓ Provision of the requisite infrastructure</li> </ul>
<b>Public Utilities</b>		
<b>Water and Sanitation</b>		
<ul style="list-style-type: none"> <li>✓ Surface and ground water potential - lakes, fresh water springs</li> </ul>	<ul style="list-style-type: none"> <li>✓ Inadequate information on ground water potential and high cost of exploration</li> </ul>	<ul style="list-style-type: none"> <li>✓ Exploit underground water to increase water supply</li> <li>✓ Investments in water harvesting technologies and storage facilities</li> <li>✓ Expansion of existing water supplies in the County</li> </ul>

	<ul style="list-style-type: none"> <li>✓ Inadequate accessibility to portable water points</li> <li>✓ Low quality of water from springs and lakes</li> <li>✓ Inadequate sanitation facilities in urban and rural areas</li> </ul>	<ul style="list-style-type: none"> <li>✓ Periodic monitoring of water levels and quality</li> <li>✓ Appropriate sanitation infrastructure including collection, disposal and treatment system be developed in all urban areas</li> <li>✓ Promote the reduce, reuse and recycling guidelines</li> </ul>
<b>Solid waste management</b>		
Urbanization – providing economies of scale	<ul style="list-style-type: none"> <li>✓ Non-existing dumping site</li> <li>✓ Inadequate waste collection points</li> <li>✓ Undesignated waste dumping sites</li> </ul>	<ul style="list-style-type: none"> <li>✓ Provide solid waste management facilities</li> <li>✓ Promote re-use and recycling guidelines</li> <li>✓ Encourage public private partnerships investment</li> </ul>
<b>ICT</b>		
<ul style="list-style-type: none"> <li>✓ Existing National Fiber Optic network (NOFBI)</li> <li>✓ High demand for internet services</li> </ul>	<ul style="list-style-type: none"> <li>✓ Disparity in access to internet services</li> <li>✓ Impediments to ICT infrastructural development</li> <li>✓ Poor connection</li> <li>✓ Un- reliability and skewed distribution</li> </ul>	<ul style="list-style-type: none"> <li>✓ Expand the fiber optic network to all urban areas to increase the coverage and data connectivity and increase access for rural population</li> <li>✓ Mainstream ICT in all sectors to promote service delivery</li> </ul>

<b>Strategy 3: Promoting Balanced Regional Development</b>		
<b>Opportunities</b>	<b>Constraints</b>	<b>Strategies</b>
<ul style="list-style-type: none"> <li>✓ Resource endowment – natural forests, national parks, minerals, green energy</li> <li>✓ Rangelands – The county has high potential for large scale livestock farming</li> <li>✓ Devolution leading to decentration of services</li> </ul>	<ul style="list-style-type: none"> <li>✓ Inadequate industrial establishments</li> <li>✓ Inadequate provision and access to infrastructural facilities and services</li> <li>✓ Under-exploitation of the existing resources</li> <li>✓ Under exploitation of the tourism potential</li> </ul>	<ul style="list-style-type: none"> <li>✓ Promote industrialization and value addition through provision of adequate requisite infrastructure</li> <li>✓ Promote irrigation activities for improved productivity in quantity and quality of yields</li> <li>✓ Encourage equitable exploitation and sound management resources while ensuring local participation for improved economic development</li> <li>✓ Promote investment in sustainable tourism including eco-tourism</li> </ul>

<b>Strategy 4: Promoting Rural Development</b>
--

<b>Opportunities</b>	<b>Constraints</b>	<b>Strategies</b>
<ul style="list-style-type: none"> <li>✓ Endowment of resources e.g., tourism, minerals, forests</li> <li>✓ Commercial livestock production</li> </ul>	<ul style="list-style-type: none"> <li>✓ Weak rural-urban linkages</li> <li>✓ Insufficient and dilapidated infrastructure facilities</li> <li>✓ Slow adoption of technology and innovation</li> <li>✓ Low productivity</li> </ul>	<ul style="list-style-type: none"> <li>✓ Develop appropriate transport and infrastructural facilities and services to support the exploitation of the natural resources in the area as well as the opportunities they present to spur economic development</li> <li>✓ Promote rural industrialization which includes, rural tourism, mining and agro-based industries</li> <li>✓ Promote commercial and large-scale livestock production practices in the rural areas</li> <li>✓ Provide education and training, extension services and incentives to farmers</li> <li>✓ Promote sustainable land uses that are capable of meeting the rangeland needs and guaranteeing secure livelihoods, economic and social growth</li> <li>✓ Promote urban containment to reduce effects of urban sprawl into potential rich agricultural and rangeland areas as well as encouraging eco-villages in the rural areas</li> </ul>
<b>Strategy 5: Urbanization</b>		
<b>Opportunities</b>	<b>Constraints</b>	<b>Strategies</b>
<ul style="list-style-type: none"> <li>✓ Presence of Holili border town to promote regional integration and cross border trade</li> <li>✓ Existing infrastructure developments (SGR, Old railway line to Taveta, Class A109 &amp; A23)</li> </ul>	<ul style="list-style-type: none"> <li>✓ Skewed distribution of urban centers (most urban nodes lie along transport corridors)</li> <li>✓ Primacy of Mombasa</li> <li>✓ Urban sprawl (peri-urban areas between urban areas and area devoted for agriculture)</li> <li>✓ Insecure land tenure</li> <li>✓ Informal settlements</li> <li>✓ Unreliable transport systems</li> <li>✓ Poor implementation of development plans and planning policies</li> </ul>	<ul style="list-style-type: none"> <li>✓ Promote the development of centers as per their potential and population (local, market, rural, urban and growth centers)</li> <li>✓ Create an enabling environment for commercial and industrial developers to activate potential development within the urban areas</li> <li>✓ Provide alternative areas for development of urban centers by provision of services and infrastructure closer to the rural areas thus urban containment and stimulation of rural growth</li> <li>✓ Strengthen urban-rural linkages through provision of integrated transportation and communication</li> <li>✓ Increase employment opportunities for improved livelihoods for urban dwellers</li> </ul>

DRAFT

## **4.2 National Spatial Plan Policy Guidelines for Taita Taveta County**

The National Spatial Plan has stipulated policies to provide a foundation upon which to anchor the strategies enumerated therein. The primary aim is to inculcate discipline in the use of land and natural resources of the country thus stemming duplication and wastage of the resources.

This section seeks to provide the spatial policy guidelines and measures aimed at promoting the achievements of the objectives of the National Spatial Plan using its guidelines. These policies are supported by a wide range of measures which spell out the specific actions to be undertaken to actualize the policy intentions. The policies shall be implemented by the County Government's agencies responsible for land use planning and development control as well as the authorities responsible for land administration.

The following are the policies and measures specific to Taita Taveta County.

**Table 4: NSP Policy Guidelines for the County**

No	Thematic Area	Policy Guidelines	Measures
1)	<p><b>Resource Potential Region</b></p> <ul style="list-style-type: none"> <li>• Irrigation Agricultural potential</li> <li>• Urban Centres (<i>Voi, Mwatate, Wundanyi, Taveta, Maungu, Rukanga</i>)</li> <li>• Existing water bodies (Lake Chala, Lake Jipe), natural forests, mountains, parks and conservancies, riverine swamps, Fresh Water Springs (Njoro and Mzima)</li> </ul>	<ul style="list-style-type: none"> <li>• Enhance irrigation agriculture and livestock production and value addition</li> <li>• Development of both large scale and small holder irrigation scheme</li> <li>• Agricultural Extension, Training, Research and Information Services shall be availed</li> <li>• Rehabilitation and augmentation of existing irrigation and drainage infrastructure</li> </ul>	<ul style="list-style-type: none"> <li>• Infrastructure provision to support value addition initiatives</li> <li>• Encourage the transformation from traditional crop farming and livestock keeping methods to modern practices</li> <li>• Development of small and medium urban centers (<i>Mwatate, Taveta, Maungu, Holili, Rukanga</i>)</li> <li>• Rural development through provision of infrastructure, agricultural sector development and related economic activities</li> <li>• Conservation of underground water resources</li> <li>• Development and rehabilitation of key infrastructure in underserved locations</li> <li>• Conservation of environment, wildlife and forest resources</li> <li>• Development of tourism infrastructure</li> <li>• Mineral mapping and exploitation</li> </ul>
2)	<p><b>Enhancing National Competitiveness</b></p>	<p>The selective concentration concept shall be adopted for the planning and location of urban based economic activities in the</p>	<ul style="list-style-type: none"> <li>• Concentrate urban based economic activities in selected urban areas to spur economic development and to exploit the natural resource endowments</li> <li>• Prioritization in the preparation of Physical and Land Use Development Plans to guide development in the selected county growth areas</li> </ul>

		county to leverage on national competitiveness	
		The major urban areas shall be planned and provided with appropriate infrastructure to enhance efficiency and quality of life	<ul style="list-style-type: none"> <li>• Enhance the Livability Index for urban areas by providing quality and affordable housing, efficient public transportation, improving neighborhood characteristics, conserve and improve the quality of the environment, quality healthcare and create job opportunities</li> <li>• Enhance road coverage and connectivity to cover the whole county</li> <li>• Improve the road infrastructure by providing for modal split, linkages and interchanges</li> <li>• Provide appropriate trunk infrastructure in the form of reliable energy, water, sanitation and ICT</li> </ul>
		Land and natural resources shall be utilized optimally and sustainably	<ul style="list-style-type: none"> <li>• Encourage the transformation from traditional farming and livestock keeping methods to modern practices</li> <li>• Identify, map and develop the tourism potential within the county as part of the southern circuit</li> <li>• Explore and exploit the mineral, energy and water potentials</li> <li>• Provide transportation networks and other infrastructure necessary to support exploitation of the existing resources</li> <li>• Support development of secondary urban centers to catalyze development</li> </ul>
3)	<b>Modernizing Agriculture</b>	Rangelands to be safeguarded against urbanization and land subdivision to ensure food security	<ul style="list-style-type: none"> <li>• Physical and Land Use Development Plans to be prepared for identified urban areas to guide growth limits</li> <li>• High potential agricultural land falling within the urban areas shall be strictly designated for agriculture production</li> <li>• Subdivision of land within the rangelands shall be strictly regulated</li> <li>• Strengthen quality assurance, regulation and safety standards for Agricultural products</li> <li>• Restrict the conversion of agricultural land into other uses</li> <li>• Formulate fiscal measures to support farmers in production</li> </ul>

			<ul style="list-style-type: none"> <li>• Provide appropriate infrastructure to support production, drying and storage of produce</li> </ul>
		Intensify the use of land in the arable rangelands to increase productivity	<ul style="list-style-type: none"> <li>• Adopt modern agricultural production methods and practices</li> <li>• Upscale the adoption of technology in agricultural production</li> <li>• Promote agri-business</li> <li>• Provide appropriate infrastructure to support farming activities</li> </ul>
		Optimize potential by promoting investment in irrigation agriculture for high value crops	<ul style="list-style-type: none"> <li>• Research on high potential irrigation areas in the county</li> <li>• Rehabilitate and operationalize existing ones and establish new irrigation schemes in the identified potential areas</li> <li>• Encourage small holders' irrigation schemes through sensitization campaigns and reduction of capital costs for investments</li> </ul>
4)	<b>Diversifying Tourism (Southern circuit)</b>	Protect and conserve tourist attraction sites	<ul style="list-style-type: none"> <li>• Identify, map and protect all wildlife migratory corridors</li> <li>• Prohibit the location of incompatible land use activities next to tourists sites</li> <li>• Regulate developments within the tourist attraction sites</li> <li>• Protect wildlife watering points</li> </ul>
		Governance of tourism shall be enhanced	<ul style="list-style-type: none"> <li>• Identify, map and develop the tourism potential within the county as part of the southern circuit</li> <li>• Identify and map potential eco-tourism development sites</li> <li>• Undertake awareness campaigns on the value of eco-tourism to the industry players</li> <li>• Develop guidelines for eco-tourism establishments</li> <li>• Facilitate access to eco-tourism development incentives</li> </ul>
		Enhance diversification of tourism products	<ul style="list-style-type: none"> <li>• Plan and develop the Southern circuit to offer eco-tourism, ecology/study tourism, sports, cultural and heritage tourism, medical tourism, conference tourism exhibition and agro-tourism</li> </ul>
		Provide appropriate tourism infrastructure and facilities	<ul style="list-style-type: none"> <li>• Carry out an inventory of tourism infrastructure and facilities the southern circuit</li> <li>• Develop the requisite tourism support infrastructure and facilities</li> <li>• Upgrade the existing tourism facilities and infrastructure and invest in more</li> <li>• Upgrade the ICT infrastructure to support tourism</li> </ul>

5)	<b>Managing Human Settlements</b>	Upgrading the existing settlements and forestalling of new informal settlements	<ul style="list-style-type: none"> <li>• Encourage redistribution of urban income through integrated development planning encompassing social, economic and physical factors</li> <li>• Ease the process of issuance of ownership documents to the legal owners in order to encourage formal developments</li> <li>• Enforce development control regulations and adherence to building code and standards.</li> <li>• Encourage use of readily available local material and technology in housing development</li> </ul>
		Provision of an efficient, reliable and effective transport system for human settlement	<ul style="list-style-type: none"> <li>• Plan and develop an integrated urban transport system</li> <li>• Integrate land use and transportation planning to encourage development patterns which reduce transport demands</li> <li>• Improve the road conditions and expand the linkages to human settlements</li> <li>• Integrate NMT with existing transport infrastructure.</li> </ul>
		Improve the management and governance of human settlements particularly in the urban centers	<ul style="list-style-type: none"> <li>• Establish and build institutional capacities of the urban areas management boards</li> <li>• Integrate technology in management of human settlements to strengthen urban data systems</li> <li>• Coordinate and strengthen development control mechanisms</li> <li>• Provide adequate human resource and improve their capacity in management of human settlements in the sectors of; housing, settlement, land, infrastructure, construction, energy and disaster management</li> <li>• Conduct research into migration trends to inform effective planning and provision of human settlements</li> <li>• Enable public private partnerships in the provision of housing</li> </ul>
		Manage and control peri-urban development to contain urban growth within its limits and protect rural land uses	<ul style="list-style-type: none"> <li>• Create green belt buffer zones to define the urban and peri-urban areas</li> <li>• Implement and enforce policies and legislations on urban containment, densification, peri-urban planning and management</li> </ul>

		<p>Develop human settlements in line with environmental and natural resources conservation to improve living standards</p>	<ul style="list-style-type: none"> <li>• Map out and prohibit development in environmental sensitive areas</li> <li>• Plan and provide an integrated waste management system</li> <li>• Prepare and implement zoning guidelines to ensure compatibility of land uses in human settlement areas</li> <li>• Promote social organization and environmental awareness through the participation of local communities in the identification of public service needs</li> <li>• Strengthen the capacity of the local governing bodies to effectively deal with environmental challenges associated with rapid and sound urban growth</li> <li>• Empower community groups, non-governmental organizations and individuals to assume responsibility and authority for managing and enhancing their environment</li> <li>• Provide adequate and functional open spaces in urban places</li> <li>• Prescribe planning standards for open/green space on private development</li> <li>• Aim for zero carbon building standards and ensure all buildings meet energy efficiency criteria</li> </ul>
--	--	--	---

DRAFT

		<p>Rationalize and support rural growth areas to act as central places and cluster settlements to free the agro potential areas and rangelands</p>	<ul style="list-style-type: none"> <li>• Provide basic services such as extension services, health facilities, markets, sanitation, water, power and education to improve the quality of rural life</li> <li>• Undertake sensitization and awareness campaigns on the need to conserve agricultural land by discouraging land fragmentation</li> <li>• Link growth centers by means of secondary roads as a minimum</li> <li>• Promote sectors such as livestock production and tourism that have potential to stimulate rural development</li> </ul>
6)	<b>Conserving the Natural Environment</b>	<p>All environmentally sensitive areas shall be protected and utilized in a sustainable manner (Taita Hills, 3 Sisters Hills, Chyulu Hills, Shaimu Hills, Tsavo East and West National Parks)</p>	<ul style="list-style-type: none"> <li>• Promote sustainable use of Environment and Natural Resources (ENR)</li> <li>• Prepare integrated wetland resource management plans to promote sustainable use of the wetland resources</li> <li>• Rehabilitate and restore the degraded wetlands and riverine ecosystem</li> <li>• Prepare integrated forest resource management plans to promote sustainable use of forest resources</li> <li>• Encourage development and implementation of appropriate forestry-based investment programs and projects</li> <li>• Involve and empower communities in the management of forest ecosystems</li> <li>• Protect and increase forest cover, riverine vegetation, critical water catchment areas and special ecosystems</li> </ul>

		Mainstream community participation in the protection and conservation of natural resources	<ul style="list-style-type: none"> <li>• Sensitize communities living around the natural resources on the need for conservation of the resources</li> <li>• Develop mechanisms for sharing benefits accruing from the natural resources by the conservation agencies in consultation with the local communities</li> <li>• Identify and map all disaster-prone areas for sustainable management.</li> </ul>
7)	<b>Integrated Transportation Network</b>	Transport and land use planning shall be integrated	<ul style="list-style-type: none"> <li>• Repossess all illegally acquired land for transport Infrastructure</li> <li>• Plan urban based activities to support mass transit systems and reduce the need for travel to urban areas</li> <li>• Incorporate the needs of persons with disabilities in all the planning, development and management of the transport network</li> <li>• Carry out traffic impact assessments for all land use changes as part of development control and as a tool of land use planning in urban and rural areas</li> <li>• Enhance the planting of trees, greenery as buffer zones to roads, railway and the airstrips</li> </ul>
		Develop an integrated and functional transport system for the urban areas	<ul style="list-style-type: none"> <li>• Provide access and linkage between county and sub-county's headquarters and for local access and link them to national transportation corridors</li> <li>• Expand all roads connecting county headquarters to sub-county headquarters to at least 30m and developed to bitumen standard</li> <li>• Develop roads connecting infrastructure installations of county and national importance and resource areas to bitumen standard</li> </ul>
		Environmental conservation shall be upheld in the planning, development and management of the transportation network	<ul style="list-style-type: none"> <li>• Construction and management of the transport network to abide by environmental regulations and standards</li> <li>• Promote the use of green energy in all transportation systems</li> </ul>

8)	<b>Providing Appropriate Infrastructure</b>	Provide safe, adequate, reliable and affordable electricity for both urban and rural settlements	<ul style="list-style-type: none"> <li>• Mainstream and enforce green energy options in the design of buildings</li> <li>• Explore alternative options of power generation such as wind and solar energy.</li> <li>• Build local capacities in the energy sector</li> </ul>
		Promote expansion and improvement of water reticulation systems to facilitate the access to clean, safe, adequate, reliable and affordable water in human settlements	<ul style="list-style-type: none"> <li>• Construct and rehabilitate water supply systems including water kiosks, yard taps and pipelines in the County</li> <li>• Incorporate water provision in all physical and land use development plans</li> <li>• Rehabilitate and protect water sources</li> <li>• Improve connectivity and water supplies in the major urban areas mainly Voi, Wundanyi, Mwatate and Taveta</li> <li>• Construct and rehabilitate rural water schemes and drill boreholes to supplement water supply</li> </ul>
		Establish a network of functional, efficient, safe, accessible and sustainable County referral health infrastructure	<ul style="list-style-type: none"> <li>• Increase the utilization of services at lower levels of the health services</li> <li>• Develop service provider capacity to offer services and appropriately refer at each level of the healthcare system</li> <li>• Improve preparedness and response to emergencies and disasters</li> <li>• Establish fully fledged low – cost diagnostic centers and provide adequate screening and treatment facilities for persons with chronic or terminal conditions, including cancer, diabetes and kidney failure</li> <li>• Modernization of infrastructure and hospital equipment</li> </ul>
		Promote appropriate, quality, efficient and cost-effective ICT infrastructure in both rural and urban areas	<ul style="list-style-type: none"> <li>• Integrate e-youth ICT platforms through establishing a youth portal to enhance information access by the youth</li> <li>• Extend ICT infrastructure to cover all the rural and local growth centers</li> <li>• Mainstream use of ICT in all levels of government and the private sector (e-government)</li> </ul>

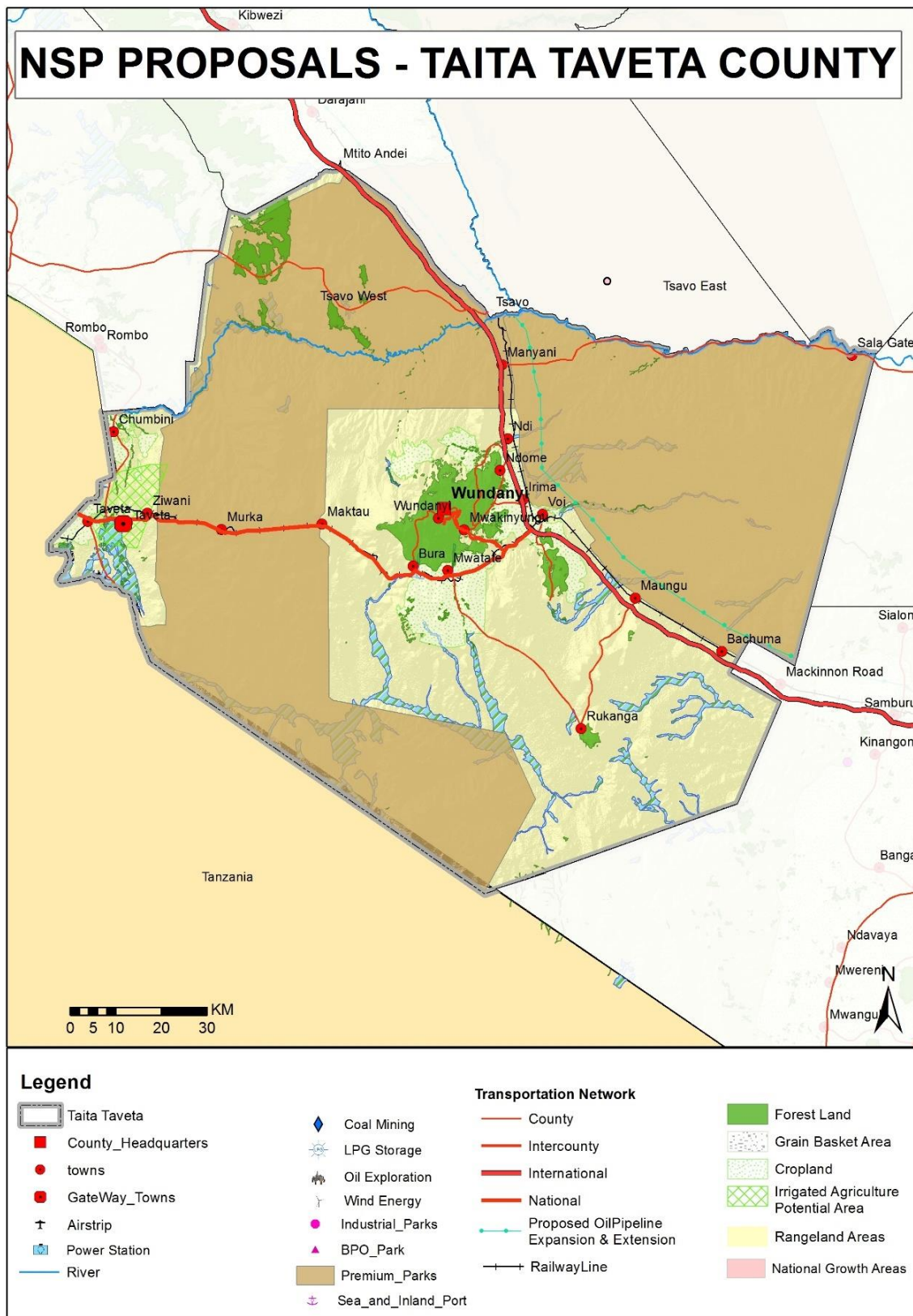
		Promote expansion of sewerage systems and waste management facilities to improve sanitation in human settlements	<ul style="list-style-type: none"> <li>• Service all urban settlements by a centralized sewerage treatment system and solid waste disposal facilities</li> <li>• Expand the sewerage coverage and capacity for the major urban centers of Voi, Wundanyi and Taveta</li> <li>• Apply appropriate technology solutions to sewerage treatment in rural and low-density housing areas</li> <li>• All physical and land use plans to make provision for development of sewer systems, treatment works and solid waste disposal sites</li> <li>• Expansion of urban boundaries to be guided by investment in infrastructural services</li> <li>• Enactment of laws at the County level to incorporate private public partnerships in infrastructure investments</li> <li>• Adopt appropriate technology to facilitate reduction, recycle and reuse of waste (3R's)</li> <li>• Undertake rehabilitation of storm water drainage systems in all urban areas</li> </ul>
		Plan, develop, maintain sporting infrastructure and rehabilitate the existing, to promote sports development	<ul style="list-style-type: none"> <li>• Establish a County Sports Talent Center to scout, tap, nurture and develop sports talents</li> <li>• Undertake rehabilitation and modernization of Moi stadium at Wundanyi to international standards</li> </ul>
9)	<b>Promoting Rapid Industrialization</b>	Identify and plan specific sites for industrial development and service them with the appropriate infrastructure	<ul style="list-style-type: none"> <li>• Plan and set aside land for industrial development in the County</li> <li>• Promote development of SMEs and designate land and plan for Industrial Parks in the County</li> <li>• Integrate the industrialization process and environment conservation</li> <li>• Provide an integrated, efficient, reliable and sustainable transport infrastructure</li> <li>• Increase availability of clean water and improve Sanitation</li> </ul>
		Provide adequate and affordable energy supply for the industrial sector	<ul style="list-style-type: none"> <li>• Adopt renewable energy generation programs by provision of incentives and enforcement of building laws requiring utilization of renewable energy</li> </ul>

			<ul style="list-style-type: none"> <li>• Incentivize large industries to promote co-generation of power</li> <li>• Promote the adoption of energy efficient technologies to lower the demand for energy</li> </ul>
		Promote the cluster development strategy to focus on proximity to raw materials and markets of region-specific products	<ul style="list-style-type: none"> <li>• Concentrate urban-based industries in the urban centers</li> <li>• Mineral-based industries to be located in-situ where the minerals are found</li> </ul>

DRAFT

Map 3 below provides a spatial representation of the policies proposed for Taita Taveta County

**Map 3: NSP Proposals**



**Source: State Department for Physical Planning, 2022**

## **5 IMPLEMENTATION AND ADOPTION OF THE GUIDELINES**

### **5.1 Overview**

The implementation framework identifies activities and further ties them with responsible actors, resources and timeframes adequate for their execution. It constitutes a deliberately established method, means or system of ensuring that the policies, strategies and measures outlined in the guidelines are continuously and consistently executed to achieve their objectives.

To effectively implement the guidelines, the various sectors, actors and levels of planning have been identified and have to work together and the mandate of the sectors at the National and County levels of planning have to be integrated.

### **5.2 Implementation Channels**

The County Specific Guidelines will be implemented through various approaches including:

1. Preparation of spatial plans to integrate and conform to the proposals of the County Guidelines. The plans include:
  - Inter-County Physical and Land Use Development Plans for Metropolitan regions, conservation zones, river basins, water towers, coastal ecosystems, trans-boundary resource areas and transport corridors, among others.
  - County Physical and Land Use Development Plans.
  - Local Physical and Land Use Development plans for Cities, Urban areas, special area plans, subject plans and detailed neighborhood plans, among others.
  - Sectoral plans
2. Integration of the guideline policies, strategies and measures into the County sector plans, programs and projects. Ministries, Departments and Agencies (MDAs), County and National Departments identified in the plan to administer the policies, strategies and measures are required to translate them into action plans, programs and projects and to include them in their subsequent sector plans.
3. Formulation of policies, regulations and standards to guide development control

### **5.3 Implementation Framework**

The implementation of the various policies, strategies, measures, programs and projects under these guidelines will involve a wide range of actors. It will require a coordinated

approach and partnership between the National and County Governments and non-state actors. It may require re-engineering of institutions and a number of actors to undertake the implementation through a harmonized approach.

The National Spatial Plan identified a multi-leveled framework for implementation of the plan that incorporates all levels of actors. In this regard, the institutions identified in the NSP to undertake implementation of the plan at County-level shall also be mandated to ensure implementation of this guidelines.

The following are the Institutions mandated to ensure implementation of the County Specific guidelines;

### **5.3.1 County Physical Planning Committee**

The role of the County Planning Committee shall be to ensure aspirations of the guidelines are articulated in preparation of the County Spatial Plans, County Integrated Development Plans and Local Physical and Land Use Development Plans.

The composition of this committee consists of;

- i. The Governor who will be the Chairperson,
- ii. the Deputy Governor,
- iii. the County Executive Committee Members from various sectors
- iv. Directors from various relevant County Departments including Lands and Physical Planning, Economic planning, Agriculture, Industrialization, Tourism, Environment, Transport and Infrastructure

The functions of the committee include;

- 1) To promote effective integration between physical, economic and sectoral planning within the framework of county development policies.
- 2) To provide policy guidance for the implementation of strategic spatial projects
- 3) To ensure that the guidelines policies and measures are mainstreamed in the various county plans.
- 4) To mobilize resource for implementation of the guidelines.

### **5.3.2 County Planning Unit (CPU)**

The Technical Unit shall provide technical support to the various implementing County departments on issues relating to physical planning.

The CPU shall;

- i. Monitor the Implementation of the guidelines.
- ii. To disseminate components of the guidelines to the various county departments.
- iii. Update the County Physical Planning Committee on a regular basis on the implementation of the guidelines.

The County Director of Physical Planning shall be responsible for preparation of an annual state of planning report which shall among other things appraise the status of implementation of the guidelines.

### **5.3.3 National Land Commission**

The National Land Commission shall play its oversight role in land use planning to ensure efficient implementation of the NSP and the guidelines. Other functions of the Commission in the implementation of the NSP and the guidelines include the following: To formulate mechanisms and parameters for monitoring and overseeing land use planning.

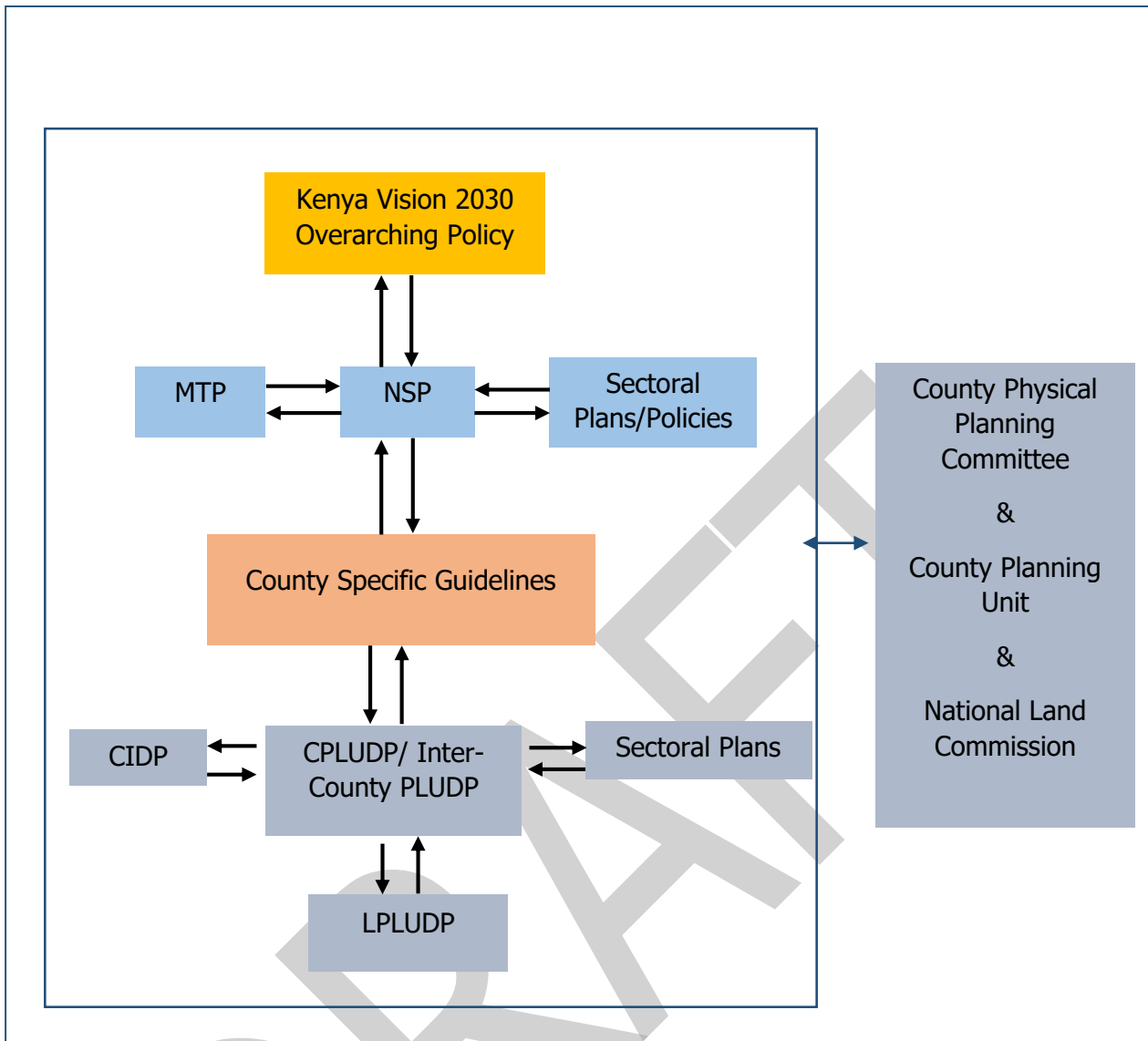
- i. To ensure that relevant planning authorities carry out their functions as required by law.
- ii. To make recommendations for improvements of the planning systems in the county.
- iii. To mobilize resources to support physical and land use planning.

### **5.4 Monitoring and Evaluation**

Implementation of the guidelines will be monitored and evaluated to measure both outputs and outcomes and ensure that the intended actions are implemented in a timely manner. To facilitate attainment of the objectives of the guidelines, performance indicators will be developed by the County Physical Planning Department for efficient monitoring. Periodic reports will be prepared in relation to progress being made in their implementation.

The graphic below illustrates the implementation structure for County Specific guidelines.

**Figure 4: Implementation structure of the guidelines**



**Source: The National Spatial Plan, 2015 - 2045**

## **5.5 Conclusion**

The application of these guidelines will be undertaken by a number of actors and hence the need for a coordinated approach. The lead agency will be Taita Taveta County Government which will be responsible for implementing various county specific initiatives proposed by the guidelines.

The National Government, County Government of Taita Taveta, the private sector and the general public will be critical in actualizing the objectives of these guidelines. The County Physical Planning Committee shall develop a communication strategy to enhance the synergies.

The National Department of Physical Planning shall undertake sensitization, training and capacity building of the County Government and National Government institutions and agencies that will be involved in the implementation of these guidelines. Special attention will be given to the County physical planning units, as they will be expected to provide technical expertise in the implementation of the County specific policies and strategies.