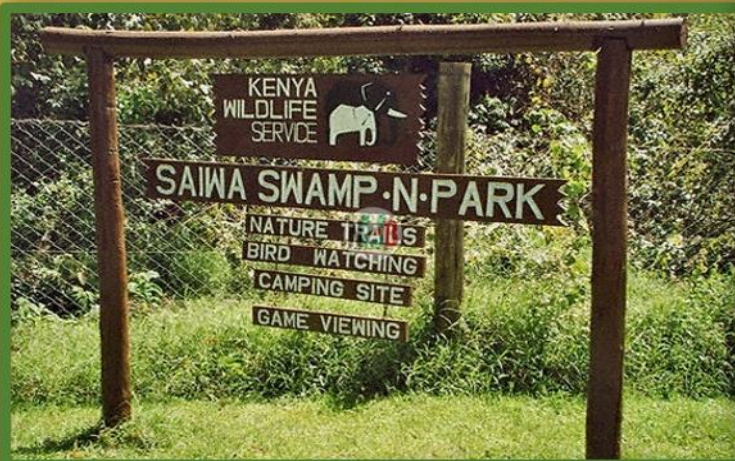




# NATIONAL SPATIAL PLAN GUIDELINES FOR TRANS NZOIA COUNTY



MINISTRY OF LANDS AND PHYSICAL PLANNING

JUNE 2022



## **FOREWORD**

The Constitution of Kenya apportions responsibility of planning to both National and County Governments. Under the Fourth Schedule on distribution of functions, Part 1 (21) and (32) mandates the National Government with the responsibility of formulating general principles of land planning, co-ordination of planning by the Counties, capacity building and technical assistance to the Counties. On the other hand, Part 2(8) allocates the function of County planning and development to County Governments. It is under these provisions that the County specific guidelines have been prepared.

The Department of Physical Planning prepared the National Spatial Plan (NSP) in response to the Kenya Vision 2030 to guide the spatial development of the country over a period of 30 years beginning in 2015.

It aims at achieving an organized, integrated, sustainable and balanced development of the country by providing a framework for better national organization and linkages between different activities within the national space.

To implement the Plan, the Counties are expected to play a key role by mainstreaming strategies, policies, and measures identified in the NSP into the County spatial planning systems.

The guidelines have identified planning policies, strategies, and measures that Plans at the County level are expected to mainstream and propagate. The policies address among others, the protection of rich agricultural land, development imbalances, conservation of environmentally sensitive areas, urban containment, and promotion of industrial development.

The guidelines provide direction on the existing potentials, the opportunities, the constraints/challenges inhibiting harnessing of the potentials, the strategies to apply, respective policies required, and the necessary measures to achieve optimal productivity, sustainability, efficiency and equity in the use of county land resources.

The guidelines are an opportunity on how best to refocus, vary and complement areas that require different approaches responding to country-specific needs and promote the livelihoods of their people, while contributing to the national aspirations of vision 2030, regional objectives of the Africa Agenda 2063, and international targets of

sustainable development. The refocusing will also be handy in reviewing and making decisions on NSP which is due for review in 2025.

These guidelines are therefore a tool for enhancing this critical path and provide a direction for development planning by the Counties as they discharge their responsibility of preparing county and local physical and land use development plans. The guidelines will also ensure that the County Integrated Development Plans conform to the proposed County specific policy guidelines and measures.

DRAFT

## **PREFACE**

The National Spatial Plan(NSP) recognizes that Kenya is greatly endowed with massive and diverse resources distributed over the national space that require an integrated and coordinated approach for optimal productivity and sustainability.

The County Specific Guidelines have been derived from the National Spatial Plan and provide a planning framework for the integration of the NSP into the county spatial planning system. They are clear statements linking the National Spatial Plan to Inter-County, County and lower-level Physical and Land Use Development Plans and provide clarification on the anticipated sustainable development outcomes of implementing the Plan.

The County Government will adopt, develop and implement their plans based on the policies, strategies, and measures articulated in the guidelines. The realized county plans are expected to guide, harmonize and facilitate development within the county, hence contributing to the overall implementation of the NSP.

The guidelines also form an efficient compass and monitoring tool for National and County Governments to jointly pursue sustainable planning and appropriate implementation mechanisms.

For the county to be nationally competitive, there is need to balance development and promote optimal utilization of land and land-based resources as well as cultivate an integrated approach in addressing the intertwined challenges of regional imbalances/inequalities, rural development, underutilization of the available resources, uncontrolled urbanization, environmental degradation and inefficient transportation. It is imperative therefore, to prioritize the implementation of this strategic document so as to promote balanced development and competitiveness across the county

## **EXECUTIVE SUMMARY**

The County Specific Guidelines seek to facilitate the implementation of the National Spatial Plan by outlining policies, strategies and measures to guide County spatial planning and development and promote optimal productivity, sustainability, efficiency and equity in the use of land. They provide a framework for preparation of lower level Plans including Inter-County, County and Local Physical and Land Use Development Plans.

The disconnect between National and County Spatial Planning and development has resulted in uncoordinated and unbalanced development, therefore creating a need for a clear structure that links National, Regional and Local planning and development. This is achievable through integration of the policies, strategies and measures proposed by the guidelines into County Spatial Plans, Programs and Projects, to tackle challenges of unbalanced regional development, urbanization, national competitiveness and unsustainable use of land and natural resources.

The County Specific Guidelines are organized into five chapters detailing various facets. Chapter one provides an overview, purpose and justification of preparation of the guidelines. It also outlines the objectives that the guidelines intend to achieve and details the preparation process as well as intended users. This chapter highlights the key principles that form the basis for preparation of lower level plans including public participation, liveability, sustainable development, urban containment, smart urban growth among others.

Chapter two details the legal and policy provisions that the guidelines are anchored upon. They include, among others, The Constitution of Kenya, 2010, The Physical and Land Use Planning Act No.13 of 2019, County Government Act, 2012, Environmental Management and Coordination (Amendment) Act, 2015, Sessional Paper No. 01 of 2017 on National Land Use Policy and Sessional Paper No. 10 of 2012 on Kenya Vision 2030.

The third chapter analyses the county profile, detailing its location, size, bio-physical characteristics, socioeconomic status and the County's comparative advantage in relation to others. The locational context provides information on the geographical position and bordering Counties while the biophysical context discusses the

topography, hydrology and climate. The socioeconomic status indicates key economic drivers of the County and its population and demographic structure.

Chapter four presents the County specific issues and proposes development strategies to promote national competitiveness, optimal use of land and resources, rural development, balanced intra-county development and urbanization.

Additionally, it provides policy guidelines and measures for County advancement.

The final chapter five focuses on implementation and adoption of the guidelines. The implementation framework identifies institutions, County development programs and projects, and further ties them with responsible actors, resources and timeframes for effective execution. It proposes a framework for ensuring that the outlined policies, strategies and measures are adequately implemented.

DRAFT

## Table of Contents:

PREFACE .....	4
1 INTRODUCTION .....	10
1.1 Background .....	10
1.2 Purpose of the Guidelines.....	10
1.3 Objectives of the Guidelines .....	11
1.4 Scope.....	11
1.5 Justification .....	12
1.6 Application of the guidelines .....	12
1.7 Process of Preparing the Guidelines .....	13
1.8 Targeted users .....	14
1.9 Key Principles .....	16
2 POLICY, LEGAL AND PLANNING FRAMEWORK FOR THE GUIDELINES.....	18
2.1 Constitutional context .....	18
2.2 Policy Context.....	18
2.2.1 Session paper No 10 of 2012 on The Kenya Vision 2030 .....	18
2.2.2 Sessional Paper No. 1 of 2017 National Land Use Policy.....	18
2.2.3 Sessional Paper No 3 of 2009 National Land Policy (NLP) .....	<b>Error!</b>
<b>Bookmark not defined.</b>	
2.3 Legal context.....	19
2.3.1 The Physical and Land Use Planning Act,2019 .....	19
2.3.2 County Governments Act, 2012 .....	19
2.3.3 The Urban Areas and Cities Act, 2011.....	19
2.3.4 Environmental Management and Coordination (amendment) Act, 2015	19
2.3.5 National Land Commission Act, 2012 .....	19
2.4 Planning Context .....	20
2.4.1 National Spatial Plan (NSP).....	20
2.4.2 NSP linkage to other plans .....	21
Source: National Spatial Plan .....	21
3 COUNTY PROFILE .....	23
3.1 Introduction .....	23
3.2 Location context .....	23
3.3 Bio-Physical context .....	24

3.3.1	Topography .....	24
3.3.2	Water Resources.....	24
3.3.3	Ecological Conditions.....	24
3.3.4	Temperature .....	25
3.3.5	Land and Land Use Patterns.....	25
3.4	Socio-Economic Background .....	26
3.5	Comparative Advantage .....	27
4	COUNTY SPECIFIC ISSUES,DEVELOPMENT STRATEGIES AND POLICY GUIDELINES.....	<b>Error! Bookmark not defined.</b>
4.1	County Specific Issues and Development Strategies .....	29
4.2	POLICY GUIDELINES.....	<b>Error! Bookmark not defined.</b>
5.	IMPLEMENTATION OF THE NSP .....	55
5.1	Introduction.....	55
5.2	Implementation Channels .....	55
5.3	Institutional Framework for Implementation .....	56
	County Physical Planning Committee .....	<b>Error! Bookmark not defined.</b>
5	CONCLUSION.....	59

DRAFT

### List of Maps

- Map 1: Location of Trans Nzoia County ..... **Error! Bookmark not defined.**  
Map 2: The Existing Situation in Trans Nzoia County **Error! Bookmark not defined.**  
Map 3: NSP Proposals for Trans Nzoia County..... **Error! Bookmark not defined.**

### List of Tables

- Table 1: Targeted Users of the Guidelines ..... 14  
Table 2: Population projection to the year 2045 ..... **Error! Bookmark not defined.**  
Table 3: County Specific Issues and Development Strategies ..**Error! Bookmark not defined.**  
Table 4: NSP Policy guidelines and measures for the County ..**Error! Bookmark not defined.**  
Table 5: NSP Implementation Approaches ..... **Error! Bookmark not defined.**

### List of Figures

- Figure 1: The Scope of the Guidelines ..... **Error! Bookmark not defined.**  
Figure 2: Policy Focus of the NSP ..... **Error! Bookmark not defined.**  
Figure 3: NSP Linkage to other Plans..... **Error! Bookmark not defined.**  
Figure 4: NSP Implementation Organization Structure ..... **Error! Bookmark not defined.**

# **1 INTRODUCTION**

## **1.1 Background**

The County Guidelines set out policies, strategies and measures that will guide the long-term spatial development of the county for a period of 30 years. They cover the entire county and defines the general trend and direction of its spatial development.

The guidelines have been developed in line with the four thematic areas as outlined in the NSP. They provide a guide to the Planning Authority at the county on how to incorporate the NSP policies, strategies and measures during the preparation of County Spatial Plans and other lower level plans like the Local Physical and Land Use Development Plans consequently implementing the NSP.

The NSP County Specific implementation guidelines summarize the County's existing potentials and opportunities, the constraints (challenges) inhibiting harnessing of the potentials, the applicable strategies and respective policies required, and the necessary measures to achieve optimal productivity, sustainability, efficiency and equity in the use of the county land resources. They act as a reference point

## **1.2 Purpose of the Guidelines**

The purpose of the County Specific Guidelines is to provide a planning framework for mainstreaming of the National Spatial Plan to the County spatial planning system.

The guidelines are intended to assist the County enhance the implementation of the NSP by linking the proposed county specific policies, strategies and measures into the County plans, programs and projects while putting measures in place for achieving them. The guidelines inform preparation of various County Physical Plans such as the County Physical and Land Use Development Plans.

For optimal implementation of these plans, a County Integrated Development Plan (CIDP) is essential since it is a sectoral and budgetary based plan that draws its implementation programs and projects from the County Physical Plans.

### **1.3 Objectives of the Guidelines**

The guidelines provide policies, strategies and measures to deal with challenges of regional imbalances/inequalities, rural development, underutilization of the available resources, urbanization, environmental degradation and inefficient transportation.

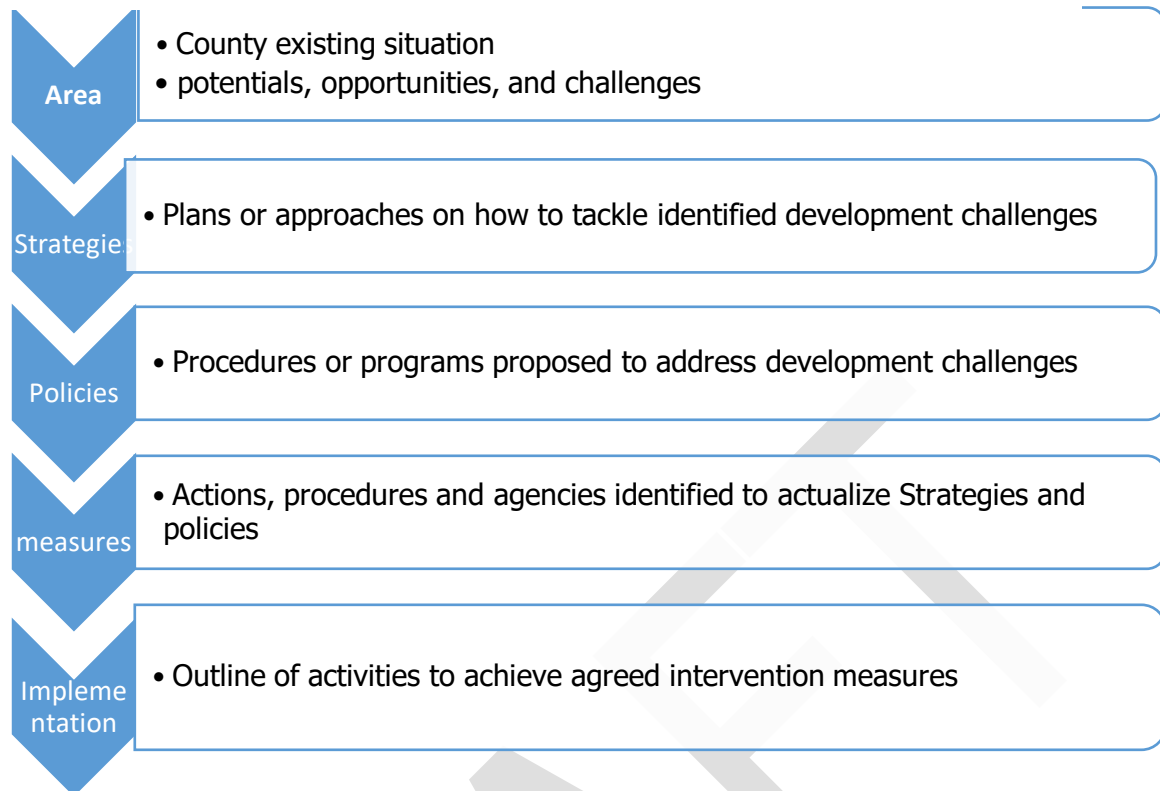
Specifically, the objectives are;

1. To sensitize the County on the provisions of the NSP
2. To promote synergy between National and County planning
3. To guide the County, implement the NSP
4. To identify the roles of the different actors in the implementation of the NSP.

### **1.4 Scope**

The guidelines and strategies are specific to Trans-Nzoia County and cover the entire territory of the county measuring approximately 2,495.6 km<sup>2</sup> on land area. The guidelines highlight the County's existing potentials and opportunities, the constraints (challenges) inhibiting harnessing of the potentials, the applicable strategies and respective policies required, and the necessary measures, actions, approaches, plans and procedures prescribed to achieve optimal productivity, sustainability, efficiency and equity in the use of the county's land resources and an outline of activities to execute agreed interventions as captured in the National Spatial Plan, as indicated in Figure 1 below. These guidelines are effective up to the year 2045.

Figure 1: Facets of the guidelines



**Source: State Department for Physical Planning, 2022**

## 1.5 Justification

Since the approval and launch of the NSP, its implementation has been undertaken in an uncoordinated manner hence the guidelines will provide a standardized approach for all Counties. The guidelines are also an important tool for tracking and evaluating implementation of the NSP both at National and County levels.

The preparation of County Spatial Plans and other lower-level plans which is a mandate of Counties has been slow and, in some Counties, has not begun at all. These guidelines are therefore a quick reference in preparation of county plans and for some Counties to help optimize land in the absence of these plans.

## 1.6 Application of the guidelines

The guidelines will be used or applied in the following ways to achieve a more sustained and coordinated development of the County;

- To effectively coordinate planning between the National and the County Government;

- To improve the County Government's capacity to formulate, coordinate and implement integrated development policies, strategies, measures, programs and projects to address spatially unbalanced development;
- To inform strategic infrastructure policy and public investment decisions which support the achievement of balanced development in the County;
- To strengthen County inter-sectoral coordination within a spatial framework and provide the private sector with a clear context in which they can make investment decisions;
- To optimize the use of land and natural resources by providing a framework for making sustainable locational choices for sustainable development and conservation of land productivity in the County.

### **1.7 Process of Preparing the Guidelines**

The process involved reviewing the National Spatial Plan and identifying key issues, spatial policies, development strategies and measures specific to Trans Nzoia County. These key issues, spatial policies, development strategies and measures will be realized through preparation of County and other lower-level plans.

Research was undertaken on various thematic areas to enrich the County specific issues and development strategies as well as policy guidelines and measures/interventions. Further, preparation of the guidelines considered the constitutional, policy and legal provisions on physical and land use planning. Expert opinion was sought on the identified issues, policies, measures and strategies for implementation viability.

The preparation of the guidelines was identified as one of the implementation tools of the NSP, in which key NSP issues, policies, strategies and measures were translated into specific action plans, programs and projects at the County level.

## 1.8 Targeted users

These Guidelines have diverse consumers and application depending on prevailing circumstances and actors as demonstrated in Table 1 below:

**Table 1: Targeted Users of the Guidelines**

User	Application
County Executive Committee Member in charge of Physical and Land Use Planning	<ul style="list-style-type: none"> <li>• Preparation of county and lower-level plans</li> <li>• Linkage of planning structures</li> <li>• Quality control of the various county plans</li> <li>• Formulate county planning policies and strategies</li> <li>• Establish county specific planning institutions</li> <li>• Coordinate and implement county plans and policies</li> </ul>
The County Director of Physical and Land Use planning	<ul style="list-style-type: none"> <li>• Advising the county government on the impact of the county specific guidelines to the county</li> <li>• Preparation of County physical and land use development plans and other lower level plans</li> <li>• Formulating County physical and land use planning policies, guidelines, strategies, and standards;</li> <li>• Issuance of development permission and other development control instruments under The Physical and Land Use Planning Act, 2013.</li> </ul>

<p>Licensed physical and land use planners both in public and private sectors</p>	<ul style="list-style-type: none"> <li>• Prepare, coordinate and implement spatial plans</li> <li>• Quality control of plans and consultancy services</li> <li>• Formulate policies, strategies and development guidelines</li> <li>• Dispute resolution</li> </ul>
<p>County assembly</p>	<ul style="list-style-type: none"> <li>• Approval of strategic sectoral budgets such as planning</li> <li>• Vetting of various County specific plans</li> <li>• Formulation and passing of County planning legislation</li> <li>• Enhance capacity to oversee the executive on spatial planning</li> </ul>
<p>Ministries, Departments and Agencies</p>	<ul style="list-style-type: none"> <li>• Mainstreaming relevant NSP policies, programs and projects</li> <li>• Allocation of resources to priority areas,</li> <li>• Strengthening linkages with spatial planning in resource management</li> </ul>
<p>The National Land Commission (NLC)</p>	<ul style="list-style-type: none"> <li>• Oversight role in land use planning to ensure efficient implementation of the NSP</li> <li>• Ensure relevant planning authorities carry out their functions as required by the law</li> </ul>
<p>Practitioners in the built environment</p>	<ul style="list-style-type: none"> <li>• Advance NSP relevant policies, programs and projects hence optimization of land resource</li> </ul>

	<ul style="list-style-type: none"> <li>• Appreciate sectoral Linkages to spatial planning</li> <li>• Facilitate incorporation of the policies, strategies and measures into, County specific plans</li> </ul>
Community, developers and investors	<ul style="list-style-type: none"> <li>• Comprehend the County priority sectors and County Plans and policies</li> <li>• Complement County spatial planning and implementation measures</li> <li>• Making informed investment decisions</li> </ul>
Development partners	<ul style="list-style-type: none"> <li>• Reference frame for selecting and funding spatial planning activities</li> <li>• Understand planning linkages and implementation</li> <li>• Informed development decisions</li> </ul>
Training institutions	<ul style="list-style-type: none"> <li>• Compliment the curriculum for training of spatial planners</li> <li>• Understand the planning procedures and processes</li> </ul>

## 1.9 Key Principles

The principles, as applied in the NSP, should guide and form the basis upon which the lower-level physical and land use plans are prepared. Further the principles should ensure sustainable, coordinated, and realistic development. They include the following:

**1. Effective Public participation/engagement:** All plans shall be prepared in a participatory and consultative manner with relevant stakeholders and sectoral actors.

**2. Urban containment/Compact cities:** Local plans shall strive to limit and control urban growth within the set urban boundaries to protect rich agricultural land, mitigate urban sprawl and reduce cost of infrastructural provision.

**3. Livability:** The planning of urban areas shall enhance the livability index in the area of housing, environment, transportation, health, and social engagement. The urban areas must be economically viable, socially inclusive and ecologically sustainable.

**4. Smart and green urban growth:** Plans shall promote sustainable use of energy, creation of green spaces, reduce the need for car travel, and promote use of local materials, support businesses, protection of heritage and creation of unique character.

**5. Sustainable development:** Balancing social, economic and environmental dimensions of development and catering for current and future generations.

**6. Promotion of ecological integrity:** Plans shall promote the protection and conservation of environmentally sensitive areas.

**7. Promote public transportation:** Favor public transportation over private transport to ensure efficiency and functionality of urban places.

**8. Balanced development:** Plans to ensure there/ is balanced development in the County to cure inequalities.

## **2 THE POLICY, LEGAL AND PLANNING FRAMEWORK FOR THE GUIDELINES**

### **2.1 Constitutional context**

The formulation of these guidelines took into account the Constitution of Kenya 2010 aspirations and Principles. Article 66 of the Constitution of Kenya 2010 gives the State powers to regulate use of any land and property in the interest of land use planning among others. The guidelines are therefore within and in response to the aspirations, values and principles as provided for in the constitution.

### **2.2 Policy Context**

#### **2.2.1 Session paper No 10 of 2012 on The Kenya Vision 2030**

Kenya Vision 2030 is the overarching national development framework which all plans should be aligned to. The preparation of all spatial plans should take cognizance of the aspirations, foundations and development concepts of the vision. The preparation of the first National Spatial Plan is identified in Kenya Vision 2030 as a flagship project and is regarded as one of the foundations for socio-economic transformation. Hence the need for linkage between national planning and county planning which will be achieved through mainstreaming NSP requirements into CSPs and other lower-level plans by preparing NSP county specific guidelines to implement the NSP at lower levels.

#### **2.2.2 Sessional Paper No. 1 of 2017 National Land Use Policy**

The policy was formulated to address the various challenges related to land use and ensure efficient, productive and sustainable use of land. The main goal of the policy is to provide legal, administrative, institutional and technological framework for optimal utilization and productivity of land related resources in a sustainable and desirable manner at national, County and community levels.

The policy recommends the preparation of a National Spatial Plan to provide an integrated framework for the development of the country including guidelines for sustainable rural and urban planning management. The policy also provides for the preparation of planning guidelines, policies and standards to be observed by County Governments and other sectoral agencies within the frameworks of approved physical and land use development plans. These guidelines have been prepared on this basis

and they are to be observed by counties in the implementation of the National Spatial Plan.

## **2.3 Legal context**

Various Acts of Parliament are in place to provide the legal framework for the implementation of the mandate provided for in Article 66 of the Constitution. The Physical and Land Use Planning Act, 2019, The Urban Areas and Cities (Amendment) Act, 2019, County Governments Act No. 17 of 2012, The Land Act No. 6 of 2012, National Land Commission Act No. 5 of 2012 among others. The NSP County specific guidelines are prepared in this context and meet this criterion.

### **2.3.1 The Physical and Land Use Planning Act, 2019**

This is the overarching statute that provides for formulation of both National and County physical and land use planning policies, guidelines and standards. The Act further provides for administration, types, content, process and approval of the various types of Physical and Land Use Development Plans.

### **2.3.2 County Governments Act, 2012**

This statute mandates County Governments to carry out the planning function at the county level. The guidelines enhance the capacity to prepare the various county level plans that meet the recommended quality and standards.

### **2.3.3 The Urban Areas and Cities Act, 2011**

The statute provides for classification of urban areas and cities, their governance and management, and for integrated development planning. The guidelines are a basis for preparation of these lower-level plans.

### **2.3.4 Environmental Management and Coordination (amendment) Act, 2015**

The Act provides for the establishment of an appropriate legal and institutional framework for the management of the environment as well as guidelines relating to environmental management and prevention or abatement of environmental degradation. The guidelines take cognizance of this Act and will be implemented within the framework.

### **2.3.5 National Land Commission Act, 2012**

The Act mandates the National Land Commission with the management and administration of public land on behalf of the National and County Governments and

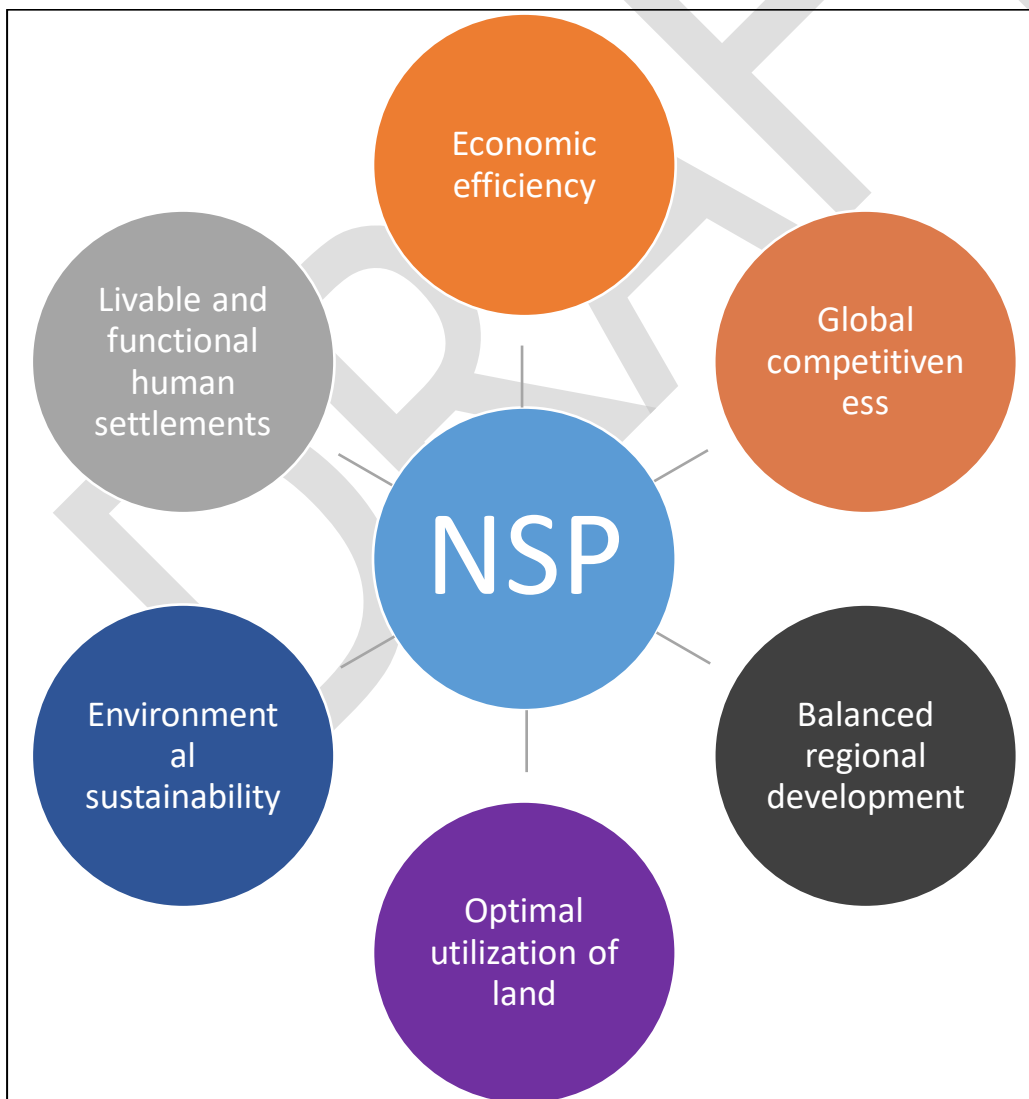
to monitor and oversight physical and lands use planning in the country. The guidelines fall within the ambit of this statute and will facilitate their oversight responsibilities.

## 2.4 Planning Context

### 2.4.1 National Spatial Plan (NSP)

The National Spatial Plan (NSP) covers the whole country encompassing the exclusive economic zone. The NSP outlines policies and strategies geared towards influencing desired future distribution and organization of human activity outlined in Vision 2030 and sectoral policies and plans. It aims at achieving economic efficiency and balanced development. The various County Spatial Plans should be aligned to the policies outlined in the NSP as demonstrated in Figure 2 below.

Figure 2: Policy focus of the NSP



**Source: National Spatial Plan, 2015-2045**

To actualize the NSP, a comprehensive implementation strategy has been proposed that embraces a multiplicity of actors including National Government Ministries, Departments and Agencies, County Governments and the National Land Commission. The strategy proposes the establishment of the following institutions as key in the implementation of the Plan; The National Physical Planning Council, the National Technical Committee and the County Physical Planning Committee.

#### **2.4.2 NSP linkage to other plans**

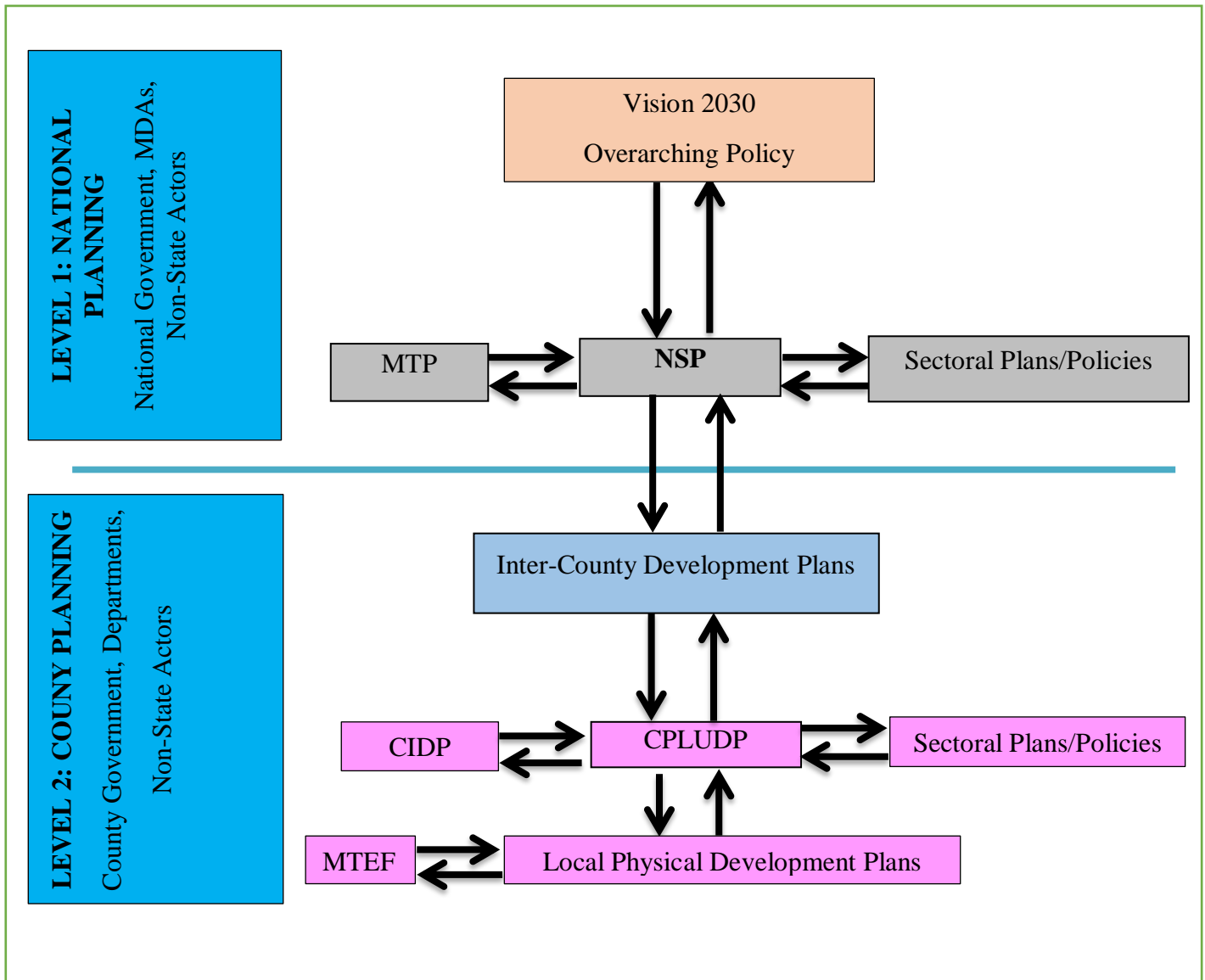
The linkage of the National Spatial Plan (NSP) to county and other lower-level plans is key to realization of its aspirations and the successful actualization of these plans. The NSP provides a spatial framework to ground the Vision 2030 flagships projects and form a basis for coordination of County policies, strategies, measures and plans.

Inter County and County plans take into considerations the policies, measures and strategies of the NSP and implements them actualizing its aspirations.

County Physical and Land Use Development Plans provide a framework where the CIDP draws its programs and projects. The implementation of the CIDP in turn leads to realization of the objectives of the County Physical and Land Use Development Plan.

The graphic below illustrates the country's planning Linkage.

***Figure 3: NSP linkages to other plans***



Source: The National Spatial Plan, 2015-2045

### **3 COUNTY PROFILE**

#### **3.1 Introduction**

This chapter discusses a set of relevant information about Trans Nzoia County. It provides information on the location, size, bio-physical features, socioeconomic status and looks at the comparative advantage of Trans Nzoia County as compared to the other Counties in Kenya.

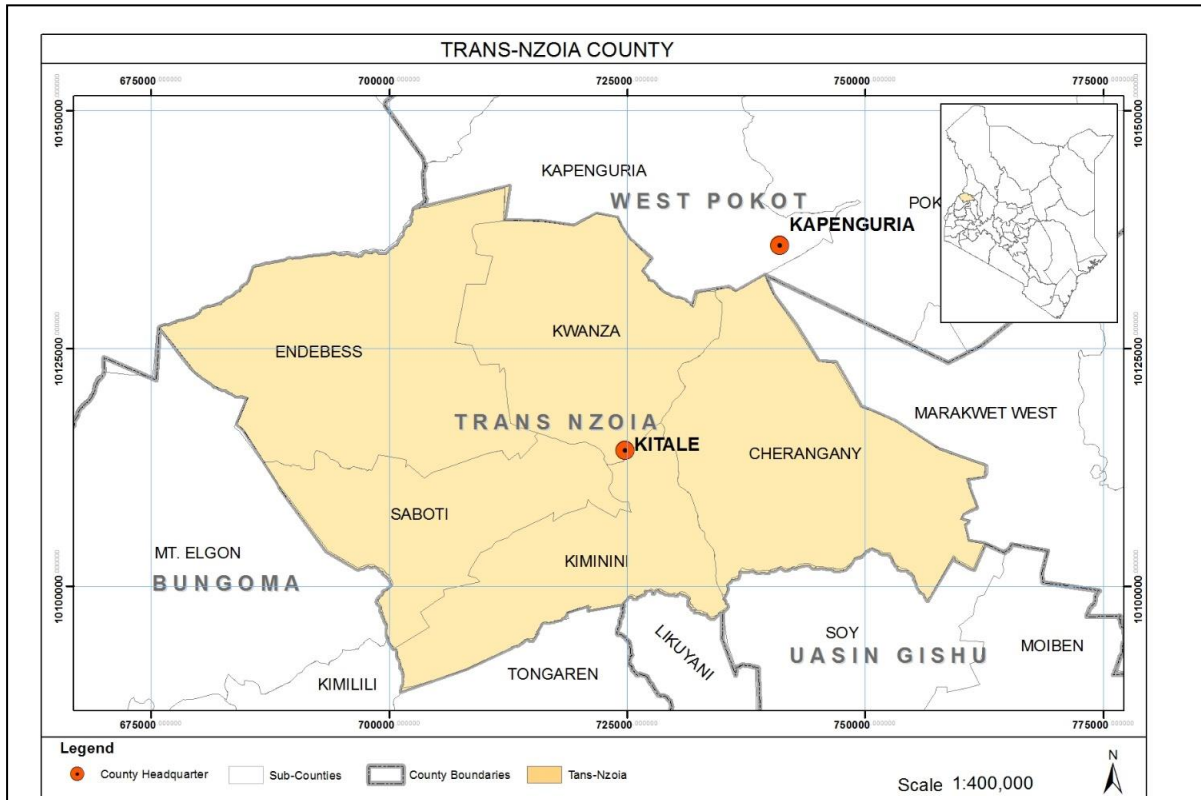
#### **3.2 Location context**

Trans Nzoia County lies approximately between latitudes  $00^{\circ} 52'$  and  $10^{\circ} 18'$  north of the equator and longitudes  $340^{\circ} 38'$  and  $350^{\circ} 23'$  east of the great Meridian. The county covers an area of 2,495.6 square kilometers. The county borders the Republic of Uganda to the West, Bungoma and Kakamega Counties to the South, West Pokot County to the East, Elgeyo Marakwet and Uasin Gishu Counties to the South East.

The county comprises of five administrative sub counties namely; Kiminini, Trans Nzoia West, Trans Nzoia East, Endebess and Kwanza. The sub counties are further sub divided into 39 locations, 63 sub locations and 1,610 Villages.

The County is situated within the Lake Region Economic Block in greater Rift Valley. The county is home to Mt. Elgon the second highest mountain in Kenya, a trans-boundary feature shared with the Republic of Uganda. The International Trunk Road A1 that links Isebania to Tanzania border and Nadapal to the Southern Sudan border, transverse the county.

Map 1: Location map



### 3.3 Bio-Physical context

#### 3.3.1 Topography

Trans Nzoia County is generally flat with gentle undulations rising steadily towards Cherangany Hills in the east and Mt. Elgon in the northwest with an altitude of 4,313 metres above the sea level.

#### 3.3.2 Water Resources

There are three main rivers in Trans Nzoia County namely; Ewaso-Rongai, Noigamaget River and Sabwani River. These three rivers are the major tributaries of river Nzoia which drains into Lake Victoria. The largest natural forest cover in the county is found in Mt. Elgon and the Cherang'any

#### 3.3.3 Ecological Conditions

The County is divided into three major Agro-ecological zones which include: the Upper Highland Zones, Upper Midland Zones and the Lower Highland Zones.

##### I. *Upper Highland Zone:*

The zone lies between altitude 2,400 and 4,313 metres above sea level covering the hills and slopes of Mt. Elgon, Cherang'ani hills and the boundary zone towards West Pokot County. The area is characterized by high density vegetation cover, shallow

stony soils and rocky outcrops. Mt. Elgon National Park situated in this zone is a major tourist attraction.

II. *Upper Midland Zone:*

It lies between altitudes 1,700 and 2,000 metres above sea level with an average annual rainfall of between 900 to 1,400mm per annum. The Zone is covered with well drained deep red and brown clays and sandy clays. This zone is the heart of livestock and agriculture farming.

III. *Lower Highland Zone:*

It covers the slopes of Mt Elgon and Cherang'any Hills with an altitude ranging from 1,800-2,400 metres above sea level. The soils in this zone are red and brown clay and suitable for both agriculture and livestock.

### **3.3.4 Temperature**

Trans Nzoia County has a cool and temperate climate with mean maximum (day time) temperatures ranging between 23.4°C and 28.4°C and mean minimum (night time) temperatures ranging between 11.0°C and 13.5°C.

### **3.3.5 Land and Land Use Patterns**

Land is the most important resource from which the county generates goods and services for the people. The county economy is primarily Agro-based where 90% of the population derive its livelihood directly from land. Land is classified into various Agro-climatic zones which determine the suitability of an area for a particular land use. Trans Nzoia is classified as a high potential zone. Presently, existing land uses can largely be classified into the following categories;

- i. Agricultural
- ii. Built up areas
- iii. Conservation

The spread of these uses is uneven across the county due to variations in climatic elements such as temperature, rainfall, humidity, slope, and other physical features. Nevertheless, changes in land use patterns have been observed in many parts of the county. The main reasons for changes in land use patterns include;

- i. Increasing population
- ii. Rising demand for food and other cash crops
- iii. Increasing urbanization
- iv. Rising standards of living

## 3.4 Socio-Economic Background

### 3.4.1.1 Demography

Trans Nzoia is a cosmopolitan county with total population estimate of 990,313 persons with density of 397 persons per sqkm (Kenya National Bureau of Statistics, 2019). It has an average Household size of 4.4 person. It is projected that by 2045 the county will have a Population estimate of approximately 2,886,252 people. The table below shows the population projected to the year 2045 in line with the planning period of the NSP.

Table 2: Summary of population and demography

Year	2019	2020		2025		2030		2035		2040		2045	
Population size	990,313	1,031,907		1,267,592		1,557,106		1,912,744		2,349,609		2,886,252	
		M	F	M	F	M	F	M	F	M	F	M	F
		509,650	522,257	626,052	641,540	7690,41	788,065	944,687	968,057	115,871	1187,38	1425,494	1460,758
households	225,071	234,524		288,089		353,887		434,714		534,002		655,966	
Area	2,495.6	2,495.6		2,495.6		2,495.6		2,495.6		2,495.6		2,495.6	
Density	397	413		508		624		766		942		1157	

source: State Department for physical planning, 2022

### 3.4.1.2 Agriculture

Land forms features such as mountains and hills determine the topography of an area influencing the type of development and the economic activities to be undertaken. The main food crops grown include maize, beans, wheat, barley, sorghum and sweet potatoes. The horticultural crops produced include cabbages, bananas, kales, tomatoes, avocado, oranges and carrots. Cash crops include tea, coffee and sugarcane

Dairy breeds include Friesian, Ayrshire, Guernsey, Jersey, Crosses and other indigenous breeds. Poultry breeds include Layers, broilers and indigenous. Sheep is reared for meat and wool while Goats are reared for milk and meat.

### 3.4.1.3 Transport infrastructure

The county's total road network length is 4421.7Km, out of which the tarmac road covers a length of 163.3Km, improved (graveled) road covers a length of 2165.4Km and new (opened) roads cover 2093Km and most of these are rural access roads and those linking to major urban centres within the county. Major Road is Class A1(Webuye -Kitale-Kapenguria-Lodwar-South Sudan Border)

The county also has an Old Colonial railway line of 23Km that terminates at Kitale town but it is not functional. Additionally, there is a functional airstrip which requires expansion.

#### **3.4.1.4 Tourism and wildlife**

It is part of the western tourism circuit. The main tourism attractions in the County are within the Mt. Elgon ecosystem that includes elephants, antelopes, buffaloes, monkeys, leopards among others. The Saiwa Swamp is another tourist attraction with the famous Sitatunga antelopes. Trans border mountain climbing is also becoming a major tourist attraction.

#### **3.4.1.5 Industry and trade**

Trans Nzoia County has small and medium size mostly Agro-Based industries and the also the crafts industries commonly referred to "Jua Kali" cottage industries. However there exists great potential for large scale industrialization.

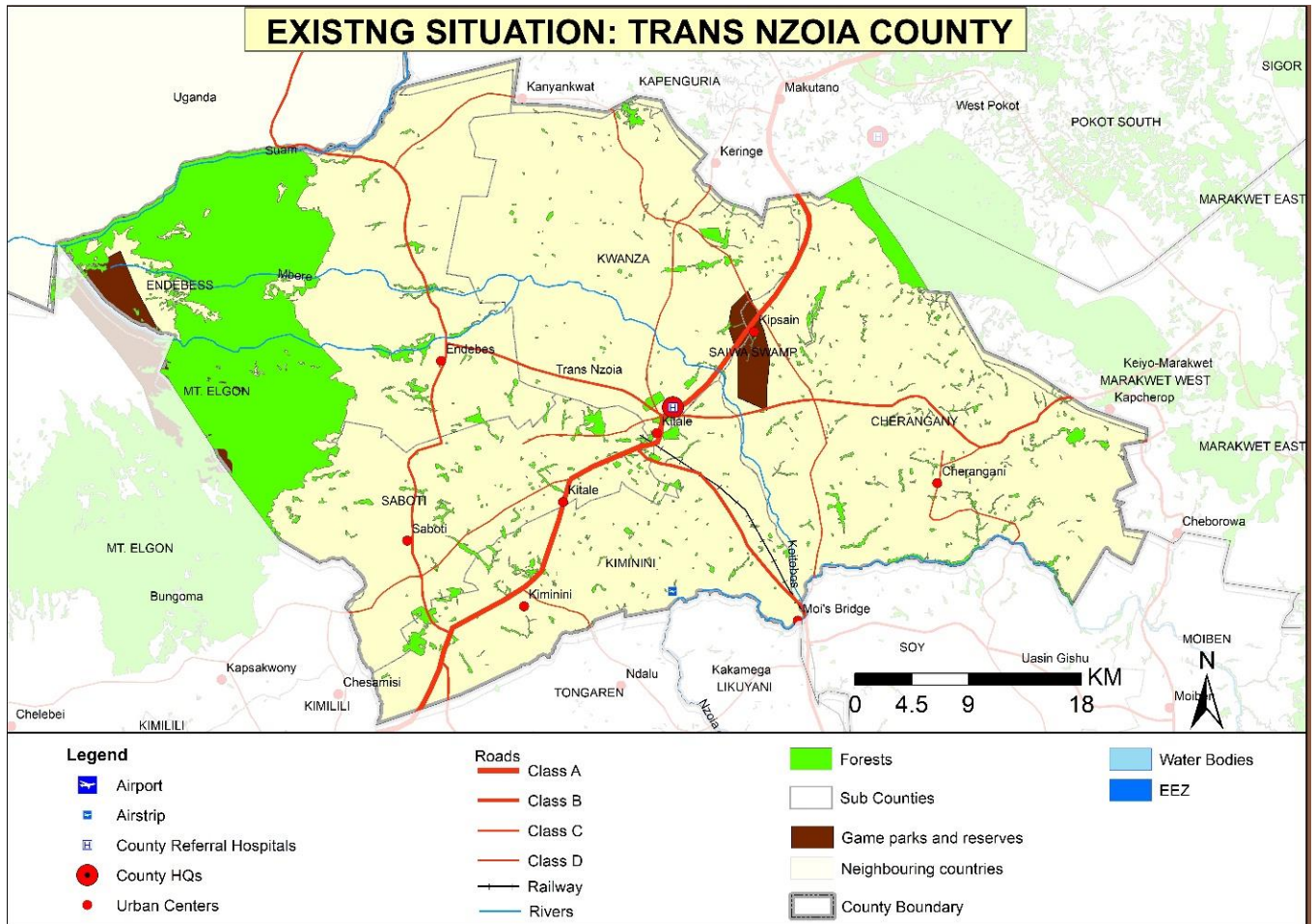
There exists a lot of Micro, Small and Medium Enterprise (MSME) which literally offer employment to a larger population of residents in the main urban nodes

### **3.5 Comparative Advantage**

- Abundance of water sources that include rivers, streams, dams, wells, springs and roof catchment. The average distance to the nearest water source is 1.5Km in rural areas and 0.5Km in urban areas.
- The county lies within endowed Agro-ecological zones (Upper Highland Zone, Lower Highland Zone) which support Agro-based economy (80% of the county is arable for crop, industrial and horticulture production).
- The county is a host to various Agro-based industries whose raw materials are produced locally. The raw materials include; sugar cane, coffee, log and grains. The main industries include; Supa Loaf Bakery, Kitale Sweet & Confectioners Ltd, Cherang'any Dairy Farm, Kenya Seed Company
- The existing rail and road networks and airstrips. The county has 67Km of class A roads (Webuye-Kitale-Kapenguria) that traverse the County hence provide economic stimulus.
- A strategic geographic positioning as a regional hub for trade and tourism due to the proximity with Uganda border.

The map below shows the existing situation in Trans Nzoia County

Map 2: Existing situation in Trans Nzoia County



Source: State Department for physical planning, 2022

## **4 DEVELOPMENT STRATEGIES AND POLICY GUIDELINES FOR TRANS NZOIA COUNTY**

### **4.1 County Specific Issues and Development Strategies**

This section provides strategies for spatial growth and development of the County by addressing the factors that prevent the County from achieving the intended development goals and objectives.

The development strategies aim at managing the overall development impacts, optimizing use of natural resources, creating a balanced County and transforming rural areas. Specifically, the development strategies have been proposed to address the following aspects of the County's development agenda:

- Managing the national competitiveness
- Optimal use of land and other resources
- Promoting balanced Intra- County development
- Rural development in the county
- Urbanization

The following are detailed NSP county-specific issues and strategies that apply to Trans-Nzoia County

## Strategy 1: Managing National Competitiveness

Table 3: County Specific Issues and Development Strategies

Opportunities	Constraints	Strategies
<ul style="list-style-type: none"> <li>• Presence of International trunk road class A1 linking Isebania to Tanzania border and Nadal to South Sudan</li> <li>• Shared international boundary with Uganda (transboundary trading)</li> <li>• A strategic position to leverage on the membership of Kenya to COMESA and East African Community</li> <li>• Cash crop economy (tea, coffee, sugarcane), horticulture and dairy farming practiced in the county</li> <li>• Wildlife and Eco-Tourism (Mt. Elgon National Park, Saiwa Swamp National Park)</li> </ul>	<ul style="list-style-type: none"> <li>• Inefficient transport infrastructure</li> <li>• Poor location destination of resource-based industries, knowledge, technology and innovation-based institutions</li> <li>• Low returns due to high costs of production</li> <li>• Inadequate knowledge-based workers</li> <li>• Low quality of goods and services</li> <li>• Inefficient and outdated technology infrastructure</li> <li>• Unattractive business climate</li> </ul>	<ul style="list-style-type: none"> <li>• Invest in the provision of adequate, supportive transport and infrastructure</li> <li>• Encourage locations of resource-based industries where resources are located</li> <li>• To harness the renewable green energy sources to increase the energy capacity and reduce the cost of production and improve quality of goods</li> <li>• Optimize resource exploitation potentials in the region</li> <li>• Encourage cooperation in planning within COMESA and EAC to leverage on economies of scale arising from integration</li> <li>• Encourage the location of universities in the county to stimulate balanced growth</li> </ul>

## Strategy 2: Optimizing Land and Natural Resources

<b>Sector: Land Capability</b> (Transition area with ability to support both livestock and crop farming)		
<b>Opportunities</b>	<b>Constraints</b>	<b>Strategies</b>
<ul style="list-style-type: none"> <li>• Abundant land resource for development</li> <li>• Change in land use patterns</li> <li>• Livestock and agriculture potential</li> </ul>	<ul style="list-style-type: none"> <li>• Skewed development patterns</li> <li>• Unsustainable land use practices</li> <li>• Communal land tenure system leading to insecurity of tenure</li> </ul>	<ul style="list-style-type: none"> <li>• Formulate policies to tap the capability and potentials of the county</li> </ul>
<b>Sector: Agriculture</b> (Upper Highland Zone, Upper Midland Zone, Lower Highland Zone)		
<b>Opportunities</b>	<b>Constraints</b>	<b>Strategies</b>
<ul style="list-style-type: none"> <li>• 24% of the county falls under Zone II (heart of crop and livestock production)</li> <li>• Favorable climatic conditions to support large scale livestock production throughout the county</li> <li>• Available institutions for value addition and research (KALRO, Kenya Seed Co., Western Seed Co., maize &amp; sunflower millers)</li> <li>• Presence of Permanent Rivers and Wetlands such as Nzoia, Sabwani, Noigamaget, Ewaso-Rongai and Saiwa Swamp</li> </ul>	<ul style="list-style-type: none"> <li>• Uncontrolled fragmentation of land into uneconomical parcels</li> <li>• Inadequate and poorly developed agricultural support infrastructure</li> <li>• Poor and dilapidated agricultural transport and infrastructure system connecting the areas</li> <li>• Soil degradation and erosion</li> <li>• Low value addition to agricultural produces</li> <li>• Market uncertainties for agricultural produces</li> <li>• Deforestation</li> </ul>	<ul style="list-style-type: none"> <li>• Stop further fragmentation of agricultural land and explore land consolidation strategy</li> <li>• Prioritize and protect the grain basket areas</li> <li>• Restrict the conversion of this land to any other use.</li> <li>• Containment of urban growth/expansion</li> <li>• Increase forest cover through afforestation, re-afforestation and Agro forestry</li> <li>• Exploit/harness potential water resources (underground, surface and rainwater)</li> <li>• Establish the land carrying capacity for livestock</li> <li>• Provide subsidies to promote the use of appropriate farm inputs and technology</li> </ul>

			<ul style="list-style-type: none"> <li>• Transportation infrastructure in agricultural areas should be improved</li> <li>• Agricultural support infrastructure should be provided to match the function</li> </ul>
<b>Sector: Environment (Conservation Area &amp; Protection Area)</b>			
<b>Sub-sector</b>	<b>Opportunities</b>	<b>Constraints</b>	<b>Strategies</b>
<ul style="list-style-type: none"> <li>• Conservation Area Highland Zones</li> </ul>	<ul style="list-style-type: none"> <li>• Presence of Water towers (Mt. Elgon &amp; Cherangani Hills)</li> <li>• High potential for ground water harvesting in some areas</li> <li>• Existing environmental policies and regulations</li> <li>• Biodiversity</li> <li>• Prime Agricultural land</li> </ul>	<ul style="list-style-type: none"> <li>• Eco-system degradation</li> <li>• Human settlement encroachment to Environmental Sensitive areas</li> <li>• Lack of Enforcement of Environmental Acts</li> <li>• Deforestation</li> <li>• Loss of wetland ecosystems</li> </ul>	<ul style="list-style-type: none"> <li>• Strict Development Control-development not permitted in Conservation areas except for Eco-Tourism and Research Purposes.</li> <li>• Enforcement of Environmental legislation</li> <li>• Strict regulations on Environmental sensitive areas i.e., Wetlands</li> <li>• Intensify forest cover through afforestation, reforestation and agroforestry of the existing forests</li> </ul>
Protection Area Rank I (Water Towers, wetlands, Natural Forests)	<ul style="list-style-type: none"> <li>• Recharge Water Catchment systems</li> <li>• Forest act as Carbon Sinks</li> <li>• Biodiversity</li> </ul>	<ul style="list-style-type: none"> <li>• Human settlement encroachment</li> <li>• Deforestation</li> <li>• Pollution</li> <li>• Frequent Wildfires</li> </ul>	<ul style="list-style-type: none"> <li>• Enforce Development Control-development not permitted in Conservation areas except for Eco-Tourism and Research Purposes.</li> <li>• Strict regulations on Environmental sensitive areas i.e., Wetlands</li> </ul>

			<ul style="list-style-type: none"> <li>• Intensify forest cover through afforestation, reafforestation and agroforestry of the existing forests</li> </ul>
Protection Area Rank II (Rivers, Mountains, Parks and conservancies)	<ul style="list-style-type: none"> <li>• Potential Fish Source</li> <li>• Wildlife habitat</li> <li>• Tourism Potential</li> </ul>	<ul style="list-style-type: none"> <li>• Human settlement encroachment to Environmental Sensitive areas</li> <li>• Pollution and destruction of ecosystems</li> <li>• Deforestation</li> <li>• Unsustainable abstraction of water</li> </ul>	<ul style="list-style-type: none"> <li>• Strict Development Control-development not permitted in Conservation areas except for Eco-Tourism and Research Purposes.</li> <li>• Preservation and conservation of bio-diversity</li> <li>• Control water abstraction</li> <li>• Enforcement of environmental legislation</li> </ul>
<b>Sector: Natural Resource</b>			
<b>Opportunities</b>		<b>Constraints</b>	<b>Strategies</b>
<ul style="list-style-type: none"> <li>• Green Energy: Solar, Wind and Biomass to support production of power.</li> <li>• Presence of gazette and ungazetted forests such as Mt Elgon and Cherang'any Hills Forest</li> <li>• Presence of Wildlife conservation areas such as Saiwa National Park and Mt Elgon Park</li> <li>• Existences of Mineral Resources such as asbestos and vermiculite</li> <li>• Presence of Permanent River such as River Nzoia and Keiyo</li> </ul>		<ul style="list-style-type: none"> <li>• High costs of exploiting available natural resources e.g., Wind and Solar</li> <li>• Inadequate technology and exploitation infrastructure</li> <li>• Under-utilization of existing resources i.e. minerals</li> <li>• Soil erosion</li> <li>• Loss of forest cover</li> <li>• Inadequate geological information on the existence of the minerals and their commercial viability</li> </ul>	<ul style="list-style-type: none"> <li>• Invest in appropriate technology and infrastructure for resource utilization</li> <li>• Undertake further exploration of the available natural resources</li> <li>• Formulate a policy pertaining to the use and protection of the parks and conservancies</li> <li>• Regulate the exploitation of underground water potential</li> <li>• Intensify forest cover through afforestation, reafforestation and agroforestry of the existing forests</li> </ul>

<b>Sector: Industrial (Urban-based and Rural-based)</b>		
<b>Opportunities</b>	<b>Constraints</b>	<b>Strategies</b>
<ul style="list-style-type: none"> <li>• Urban and Rural growth centers</li> <li>• High Agro-based industry potential areas (Cottage and Craft)</li> <li>• Human resource (both skilled and unskilled)</li> </ul>	<ul style="list-style-type: none"> <li>• Inadequate supply of land for industrialization</li> <li>• Low adoption of technology</li> <li>• Low industrial investment</li> <li>• Inadequate transport infrastructure</li> <li>• Lack of value addition support infrastructures and services</li> <li>• High Production cost i.e. energy and labor cost</li> <li>• Insufficient markets for finished products</li> </ul>	<ul style="list-style-type: none"> <li>• Invest in exploration of potential mineral reserves</li> <li>• Provide adequate, supportive transport and infrastructure</li> <li>• Provide appropriate technology to enhance value addition</li> <li>• Diversify energy production sources to reduce costs of production and enhance its reliability</li> <li>• Promote the formation of cooperatives and Saccos to advance marketing</li> <li>• Promote assertive marketing campaigns for products both domestically and internationally</li> </ul>
<b>Sector: Tourism (Western Circuit)</b>		
<b>Opportunities</b>	<b>Constraints</b>	<b>Strategies</b>
<ul style="list-style-type: none"> <li>• High potential for Cultural and Historical tourism such as Kitale Museums</li> <li>• Wildlife conservation areas such as Mt Elgon National Reserve and Saiwa Swamp National Park National Reserve</li> <li>• Presence of Kitale Airstrip</li> </ul>	<ul style="list-style-type: none"> <li>• Untapped tourism potential such as cultural tourism</li> <li>• Underdeveloped tourism sites and products</li> <li>• Poor/inadequate transport and infrastructural facilities</li> <li>• Human-Wildlife Conflict</li> </ul>	<ul style="list-style-type: none"> <li>• Provision of appropriate infrastructure to link the county to other circuits</li> <li>• Revive and Rehabilitate airstrips connecting the circuits</li> </ul>

	<ul style="list-style-type: none"> <li>• Poaching</li> <li>• Poor marketing strategies to promote tourism</li> <li>• Weak integration of ICT in the development and management of the tourism value chain</li> </ul>	<ul style="list-style-type: none"> <li>• Identify and investment of under-utilized sites</li> <li>• Diversify the tourism products based on potentials i.e., Cultural Tourism</li> <li>• Strict enforcement of the existing regulations for safeguarding protection areas</li> <li>• Enhance security in tourism potential areas</li> <li>• Invest in ICT infrastructure and capitalize on online marketing</li> <li>• Promote domestic tourism by providing incentives and subsidies</li> <li>• Increase our tourism market segment</li> </ul>
<b>Sector: Transport</b>		
<b>Opportunities</b>	<b>Constraints</b>	<b>Strategies</b>
<ul style="list-style-type: none"> <li>• Presence of International trunk road class A1 linking Isebania to Tanzania border and Nadal to South Sudan</li> <li>• Rapid urbanization</li> <li>• Existence of airstrips i.e. Kitale airstrip</li> </ul>	<ul style="list-style-type: none"> <li>• Most Intra- County Roads are in poor condition.</li> <li>• Transport system not fully integrated</li> <li>• Dilapidated Airstrip</li> <li>• Lack of Non-Motorized and Intermediate Means of Transport (NMIMT)</li> <li>• Missing transportation links</li> </ul>	<ul style="list-style-type: none"> <li>• Upgrading of all the intra-county roads</li> <li>• Integrate transport corridor planning</li> <li>• Improve and expand the existing airstrips</li> <li>• Enforce development control measures within and around airstrips</li> </ul>

		<ul style="list-style-type: none"> <li>• Inadequate or lack of terminal facilities</li> <li>• Increase financial resources for road construction and maintenance</li> <li>• Encroachment and/ or grabbing of road reserves</li> </ul>	<ul style="list-style-type: none"> <li>• Formulate regulations and guidelines to control development along transport corridors</li> <li>• Repossess and revert all illegally acquired land for roads infrastructure</li> <li>• Preserve and secure adequate land for future transport and other related infrastructural Development</li> </ul>
<b>Sector: Public Utilities</b>			
<b>Sub-Sector</b>	<b>Opportunities</b>	<b>Constraints</b>	<b>Strategies</b>
Solid waste management	<ul style="list-style-type: none"> <li>• Existing institutions (Nzoia Water and Sanitation Company)</li> <li>• Private solid waste collecting companies</li> <li>• Existing policies on waste management activities in the County</li> </ul>	<ul style="list-style-type: none"> <li>• Lack of solid waste management systems</li> <li>• High urbanization rate</li> <li>• Non-existent dumping sites</li> <li>• Poorly sited dumping sites</li> </ul>	<ul style="list-style-type: none"> <li>• Construction and upgrading of integrated solid waste facilities to enable proper collection, sorting, treatment and disposal of solid waste</li> <li>• Implement reduce, reuse and recycling guidelines</li> <li>• Encourage public private partnerships</li> </ul>
Water and Sanitation	<ul style="list-style-type: none"> <li>• Existing institutions (Nzoia Water and Sanitation Company)</li> </ul>	<ul style="list-style-type: none"> <li>• Lack of Water management systems</li> <li>• High population influx</li> </ul>	<ul style="list-style-type: none"> <li>• Construction and upgrading of integrated Water facilities</li> </ul>

	<ul style="list-style-type: none"> <li>Abundance of Water sources and catchment areas</li> </ul>		
<b>Sector: Infrastructure</b> (Physical and Social)			
<b>Sub-Sector</b>	<b>Opportunities</b>	<b>Constraints</b>	<b>Strategies</b>
Energy	<ul style="list-style-type: none"> <li>Availability of alternative energy sources- green energy such as Solar and Biomass</li> <li>Potential for Hydrothermal energy at Water falls (Mt. Elgon &amp; Cherangani Hills)</li> <li>Presence of the KPLC National Grid</li> </ul>	<ul style="list-style-type: none"> <li>Constant power surges</li> <li>Inadequate coverage by existing network</li> <li>Lack of proper assessment and research on exploitation of green energy</li> <li>Under exploitation of energy resources</li> <li>Lack of relevant policy framework to guide tapping and use of alternative sources of energy</li> </ul>	<ul style="list-style-type: none"> <li>Renewable energy sources be harnessed, transmitted and distributed (Solar and Biomass)</li> <li>Formulate a policy to guide and regulate the exploitation use of potential green energy sources</li> <li>Use of most appropriate energy consuming equipment</li> <li>Advocate for upgrading of electricity infrastructure</li> </ul>
ICT	<ul style="list-style-type: none"> <li>Increased demand in technological services</li> <li>Laying of fiber optic network</li> <li>Existing ICT systems</li> <li>Emergence of the country as an ICT Hub</li> </ul>	<ul style="list-style-type: none"> <li>Disparity in access to internet services in both urban and rural Areas</li> <li>Poor Connection Infrastructure</li> <li>High connection cost</li> </ul>	<ul style="list-style-type: none"> <li>Mainstream ICT at all sectors to promote service, increase efficiency and productivity and improve on existing platforms</li> <li>Promote expansion of the fiber optic network to all urban areas</li> <li>Promote/Encourage development and expansion of ICT Infrastructure</li> </ul>

Sports	<ul style="list-style-type: none"> <li>• Immense, untapped sporting talent in the country</li> <li>• Existence of many regional and national tournaments that need to be hosted in good quality stadia; sports tourism</li> <li>• Availability of land for infrastructure development</li> </ul>	<ul style="list-style-type: none"> <li>• Poor management of existent infrastructure</li> <li>• Skewed distribution</li> <li>• Lack of proper repair and maintenance structures</li> <li>• Little modernization and upgrade of sporting infrastructure</li> <li>• Underutilization stemming from little promotion of sports as a potential income earner</li> </ul>	<ul style="list-style-type: none"> <li>• Address imbalances in distribution of sporting infrastructure by establishing modern stadia in areas away from major urban areas</li> <li>• Develop sound stadia repair, upgrade and maintenance policies</li> <li>• Encourage private entities to take part in the development and management of sporting infrastructure</li> <li>• Set up talent academies to harness sporting talent throughout the country and increase utilization of the infrastructure</li> </ul>
Housing	<ul style="list-style-type: none"> <li>• Availability of land for Housing infrastructure</li> <li>• Availability of local building materials</li> <li>• Governments developmental agenda on provision of affordable housing</li> </ul>	<ul style="list-style-type: none"> <li>• Insecurity of tenure</li> <li>• Housing demand outstrips supply hence deficit in supply of good quality housing</li> <li>• Slum Proliferation</li> <li>• Little government involvement in housing provision leaving it to private developers</li> <li>• Clustered settlement patterns</li> </ul>	<ul style="list-style-type: none"> <li>• Promote affordable housing schemes in urban areas of through partnerships with both large and small-scale providers</li> <li>• Bridge the Gap between housing demand and supply</li> <li>• Encourage availability of low- cost mortgages</li> <li>• Set up housing technology centres to advise on low-cost and eco-friendly approaches</li> <li>• Provide adequate and appropriate infrastructure Government and/or PPP to provide site and serviced properties</li> </ul>

### Strategy 3: Balanced Regional Development

Opportunities	Constraints	Strategies
<ul style="list-style-type: none"> <li>• Existing and enabling policy framework i.e., Vision 2030</li> <li>• Rain fed Agricultural area</li> <li>• Inherent potential includes green energy generation</li> <li>• Classified as a medium potential region due to its high potential for agriculture through irrigation and livestock keeping.</li> <li>• Range land region as it has high potential for large scale livestock keeping</li> <li>• Budgetary allocation in Equalization funds to improve on water services, healthcare, roads and electricity</li> <li>• Devolution</li> </ul>	<ul style="list-style-type: none"> <li>• Under-exploitation of the natural resource potential i.e. Solar and Wind Energy</li> <li>• Inadequate provision and access to infrastructural facilities</li> <li>• Insecurity</li> <li>• Inadequate geological information on the existence of minerals and their commercial viability</li> <li>• Food and nutrition insecurity</li> <li>• Regional disparities</li> <li>• Inadequate utilization of knowledge and innovation</li> </ul>	<ul style="list-style-type: none"> <li>• Establish economic zones in the region according to the potential of every</li> <li>• Encourage equitable exploitation and sound management of mineral resources</li> <li>• Promote investment in sustainable tourism including eco-tourism</li> <li>• Promote industrialization and value addition</li> <li>• Provision of support infrastructure in the less developed regions as well as strengthening the better developed regions</li> <li>• Promote Irrigation activities for improved productivity in quantity and quality of yield within the potential regions</li> <li>• Promote the Utilization of knowledge and innovation.</li> </ul>

## Strategy 4: Promoting Rural Development

Opportunities	Constraints	Strategies
<ul style="list-style-type: none"> <li>• Resource endowment in rural areas (Agriculture and Tourism)</li> <li>• Enabling policy framework to support rural development e.g. NLUP and Vision 2030</li> <li>• Human resource (both skilled and unskilled)</li> <li>• Transitional area with poverty levels below 50-70%</li> <li>• Existing Infrastructure</li> </ul>	<ul style="list-style-type: none"> <li>• Weak rural-urban linkages</li> <li>• Insufficient and dilapidated infrastructure facilities and services</li> <li>• Under exploitation of resources in rural areas</li> <li>• The dispersed nature of the human settlements</li> <li>• Slow adoption of technology</li> <li>• Low productivity</li> </ul>	<ul style="list-style-type: none"> <li>- Develop appropriate transport and infrastructural facilities and services</li> <li>- Promote rural industrialization which includes, rural tourism and Agro-based industries</li> <li>- Promote commercial and large-scale livestock production practices in the weak and transitional cluster of rural areas</li> <li>- Provision of education and training services</li> <li>- Adoption of modern technology</li> <li>- Provision of extension services and incentives to the farmers</li> <li>- Provide a spatial framework for harnessing natural wealth e.g. renewable energy, from both solar and wind</li> <li>- Promote sustainable land uses that are capable of meeting the rangeland needs</li> <li>- Promote urban containment to reduce effects of urban sprawl into agricultural and rangeland areas.</li> </ul>

## 4.2 National Spatial Plan Policy Guidelines and Measures for Trans Nzoia County

This section seeks to provide the spatial policy guidelines and measures aimed at promoting the achievements of the objectives of the National Spatial Plan using its guidelines. They aim at enhancing global and national competitiveness and economic efficiency, optimizing the use of land and natural resources, promoting regional balanced development and conservation of the environment.

These policies are supported by a wide range of measures which spell out the specific actions to be undertaken to actualize the policy intentions. The policies shall ensure that the County is nationally competitive as an investment destination, especially in emerging sectors such as the ICT. The policies will also be implemented by the County government's agencies responsible for planning and development control as well as the authorities responsible for land administration.

The following are the policies and measures specific to Trans Nzoia County.

Table 3: NSP policy guidelines and measures

	<b>Sector/Area</b>	<b>Policy</b>	<b>Measures</b>
1	<p><b>Resource Potential Regions</b></p> <ul style="list-style-type: none"> <li>- <b>Rain fed Agricultural potential areas</b></li> <li>- <b>Urban Centres</b> (Kitale, Kiminini, Moi's Bridge, Maili Nane, Kipsaina, Endebess, Saboti, Kaplamai, Tuigoini, Suwerwa)</li> </ul>	<ul style="list-style-type: none"> <li>- Enhance agricultural production and value addition</li> <li>- Investment in social and physical infrastructure</li> <li>- Environmental conservation</li> <li>- Intensive land use</li> <li>- Balanced growth</li> <li>- Densification of built-up areas</li> </ul>	<ul style="list-style-type: none"> <li>- Infrastructure provision to support value addition initiatives</li> <li>- Undertake small and medium centres development e.g. Kiminini, Kaplamai, Maili Nane, Saboti, Endebes, Kipsaina</li> <li>- Rural development through provision of infrastructure, agricultural sector development</li> <li>- Development and rehabilitation of key infrastructure in underserved locations</li> <li>- Environmental protection</li> <li>- Conservation of wildlife and forest resources</li> </ul>

	<b>Sector/Area</b>	<b>Policy</b>	<b>Measures</b>
2	<b>County spatial Structure Linkage</b>	<ul style="list-style-type: none"> <li>- The National Spatial Plan establishes the NSP as a framework to achieve integrated and sustainable physical/spatial development</li> <li>- National Spatial Plan as a basis for preparation of lower tier development plans</li> </ul>	<ul style="list-style-type: none"> <li>- All county and local physical/spatial plans be guided by objectives and policies of NSP</li> <li>- Review spatial/physical plans to conform to objectives/policies of NSP</li> <li>- Review 5-year medium term spatial plans shall take into account provisions of NSP</li> <li>- Sectoral plans to take cognizance of objectives and policies of NSP</li> </ul>
3	<b>Enhancing National Competitiveness</b>  [Kitale, Kiminini, Moi's Bridge, Maili Nane, Kipsaina, Endebess, Saboti, Chepchoina, Kisawai, Kaplamai, Tuigoin, Suwerwa, Kachibora]	<ul style="list-style-type: none"> <li>- The selective concentration concept shall be adopted for the planning and location of urban based economic activities to leverage on national competitiveness</li> <li>- The major urban centres shall be planned and provided with appropriate infrastructure</li> <li>- Land and natural resources of the less developed areas shall be utilized optimally and sustainably</li> <li>- Enhance corporation in spatial planning with member states of East African Community (EAC) and Common Market of Eastern and Southern Africa (COMESA)</li> </ul>	<ul style="list-style-type: none"> <li>- Concentrate urban based economic activities such as industrial/manufacturing; Special Economic Zones, Rural Production Units, rural growth centres and nodes</li> <li>- Enhance the Livability Index for urban areas</li> <li>- Promote Advance Technological Readiness through provision of technological centers</li> <li>- Encourage the Modernization of farming practices</li> <li>- The planning of trans-boundary resources, transport corridors and infrastructure as well as border urban areas shall be undertaken jointly</li> <li>- Improve the transport infrastructure</li> </ul>
4	<b>Modernizing Agriculture</b>	Agro-climatic zones I, II & III to be safeguarded against urbanization and land sub-division	<ul style="list-style-type: none"> <li>- Urban spatial/development plans to be prepared for identified urban areas to guide growth limits</li> </ul>

	<b>Sector/Area</b>	<b>Policy</b>	<b>Measures</b>
	(Land development strategy for safeguarding high potential areas)		<ul style="list-style-type: none"> <li>- High potential agricultural land falling between urban areas in the identified zones shall be strictly designated for agriculture production</li> <li>- Subdivision of land within zones I, II, III shall be strictly regulated</li> <li>- New urban developments shall be encouraged to be located in low potential areas</li> </ul>
Agro-ecological Zone II & Zone III shall be prioritized and protected to ensure food security		<ul style="list-style-type: none"> <li>- Restrict the conversion of land into these areas to agriculture</li> <li>- Divert urban development from this area and strictly regulate the subdivision of land</li> <li>- Formulate fiscal measures to support farmers in production</li> <li>- Provide appropriate infrastructure to support production, drying and storage of produce</li> </ul>	
The use of land in Agro-ecological Zone II & Zone III shall be intensified to increase productivity		<ul style="list-style-type: none"> <li>- Adopt modern agricultural production methods and practices</li> <li>- Upscale the adoption of technology in agricultural production</li> <li>- Encourage mixed farming</li> <li>- Promote agri-business</li> <li>- Provide appropriate infrastructure to support farming activities</li> </ul>	
Optimize potential by promoting investment in irrigation agriculture for high value crops		<ul style="list-style-type: none"> <li>- Research on high potential irrigation areas in the county</li> </ul>	

	<b>Sector/Area</b>	<b>Policy</b>	<b>Measures</b>
			<ul style="list-style-type: none"> <li>- Establish new irrigation schemes in the identified potential areas</li> <li>- Encourage small holders' irrigation schemes through sensitization campaigns and reduction of capital costs for investments</li> </ul>
5	<b>Diversify Tourism</b>	Tourist attraction sites shall be protected and conserved	<ul style="list-style-type: none"> <li>- Identify, map and protect wildlife migration corridors [elephant maternity site]</li> <li>- Prepare subject plans for the wildlife habitats</li> <li>- Prohibit the location of incompatible land use activities next to tourist's sites</li> <li>- Regulate developments within the tourist attraction sites</li> <li>- Protect wildlife watering points</li> </ul>
		Governance of tourism shall be enhanced	<ul style="list-style-type: none"> <li>- Identify and map potential eco-tourism development sites</li> <li>- Undertake awareness campaigns on the value of eco-tourism to the industry players</li> <li>- Develop guidelines for eco-tourism establishments</li> <li>- Facilitate access to eco-tourism development incentives</li> </ul>
		Diversification of tourism products shall be enhanced	<ul style="list-style-type: none"> <li>- Western circuit to be planned and developed to offer eco-tourism, ecology/study tourism, sports, cultural and heritage tourism, medical</li> </ul>

	<b>Sector/Area</b>	<b>Policy</b>	<b>Measures</b>
			<p>tourism, conference tourism exhibition and agro-tourism</p>
		Appropriate tourism support infrastructure and facilities to be provided	<ul style="list-style-type: none"> <li>- Carry out an inventory of tourism infrastructure and facilities the circuit</li> <li>- Develop the requisite tourism support infrastructure and facilities</li> <li>- Upgrade the existing tourism facilities and infrastructure and invest in more</li> <li>- Upgrade the ICT infrastructure to support tourism</li> </ul>
6	<b>Managing Settlements</b>	<b>Human</b>	<p>Upgrading the existing settlements and forestalling of new informal settlements</p> <ul style="list-style-type: none"> <li>- Prepare Local Physical Development Plans for renewal and/or redevelopment of decaying estates and informal settlements</li> <li>- Enforce development control regulations and adherence to building code and standards</li> <li>- Encourage use of readily available local material and technology in housing development</li> </ul>
		Provision of an efficient, reliable and effective transport system for human settlement	<ul style="list-style-type: none"> <li>- Plan and develop an integrated urban transport system to enhance provision of relevant modal split</li> <li>- Integrate land use and transportation planning to encourage development patterns which reduce transport demands</li> </ul>

	<b>Sector/Area</b>	<b>Policy</b>	<b>Measures</b>
			<ul style="list-style-type: none"> <li>- Improve the road conditions and expand the linkages to human settlements</li> <li>- Integrate NMT with existing transport infrastructure.</li> </ul>
		<p>Improve management and governance of human settlements</p>	<ul style="list-style-type: none"> <li>- Build capacities of the urban areas management boards</li> <li>- Integrate technology in management of human settlements to strengthen urban data systems</li> <li>- Coordinate and strengthen development control mechanisms</li> <li>- Provide adequate human resource and improve their capacity in management of human settlements in the sectors of; housing, settlement, land, infrastructure, construction, energy and disaster management</li> <li>- Enter public private partnerships in the provision of housing.</li> </ul>
		<p>Manage and control Peri-urban development to contain urban growth within its limits and protect rural land uses</p>	<ul style="list-style-type: none"> <li>- Formulate policy for urban containment and densification</li> <li>- Formulate and implement planning legislation on peri-urban planning and management</li> <li>- Institute sanctions on idle land to encourage productive and sustainable land utilization</li> <li>- Create green belt buffer zones to define the urban and peri-urban areas</li> </ul>

	<b>Sector/Area</b>	<b>Policy</b>	<b>Measures</b>
			<ul style="list-style-type: none"> <li>- Incentivize local farmers to preserve agricultural land by promoting local production and providing ready markets for agricultural produce</li> </ul>
		<p>Develop Human settlements in line with environmental and natural resources conservation to improve living conditions</p>	<ul style="list-style-type: none"> <li>- Map out and prohibit development in environmental sensitive areas</li> <li>- Plan and provide an integrated waste management system</li> <li>- Prepare and implement zoning guidelines to ensure compatibility of land uses in human settlement areas</li> <li>- Promote social organization and environmental awareness through the participation of local communities in the identification of public service needs</li> <li>- Strengthen the capacity of the local governing bodies to effectively deal with environmental challenges associated with rapid and sound urban growth</li> <li>- Empower community groups, nongovernmental organizations and individuals to assume responsibility and authority for managing and enhancing their environment</li> <li>- Provide adequate and functional open spaces in urban places</li> </ul>

	<b>Sector/Area</b>	<b>Policy</b>	<b>Measures</b>
			<ul style="list-style-type: none"> <li>- Encourage non-motorized transport (NMT) and re-introduction of public transport in urban centres</li> <li>- Aim for zero carbon building standards and ensure all buildings meet energy efficiency criteria</li> </ul>
		<p>Rationalize and support Rural growth centres to act as central places and settlements clustered to free the rich agricultural land</p>	<ul style="list-style-type: none"> <li>- Provide basic infrastructure services</li> <li>- Undertake sensitization and awareness campaigns on the need to conserve agricultural land</li> <li>- Link growth centres by means of secondary roads as a minimum</li> <li>- Incorporate disaster management and mitigation in planning of rural settlements.</li> </ul>
		<p>The expected increase in population in urban areas shall be anticipated and accommodated in main growth areas</p>	<ul style="list-style-type: none"> <li>- Increase housing stock by planning and redeveloping existing county housing areas</li> <li>- Plan and designate land for new housing schemes</li> <li>- Formulate enabling local policy frameworks to support employment and income generation</li> <li>- Locate industrial and service development activities in the main urban areas</li> <li>- Promote adoption of technology and fiscal incentives and market support for the informal sector</li> </ul>

	<b>Sector/Area</b>	<b>Policy</b>	<b>Measures</b>
7	<b>Conserving the Natural Environment</b>	<p>All environmentally sensitive areas shall be protected and utilized in a sustainable manner</p> <p>[Mt. Elgon Forest, Cherangani Hills Forest, Saiwa Swamp]</p>	<ul style="list-style-type: none"> <li>- Prepare integrated wetland resource management plans</li> <li>- Involve and empower communities in the management of wetland ecosystems</li> <li>- Prepare integrated forest resource management plans</li> <li>- Support effective implementation of the forest and other related policies and laws</li> <li>- Encourage development and implementation of appropriate forestry-based investment programmes and projects</li> <li>- Promote agro-forestry and afforestation</li> <li>- Map out potential areas for commercial plantation forestry</li> </ul>
		Community participation shall be mainstreamed in the protection and conservation of natural resources	<ul style="list-style-type: none"> <li>- Sensitize communities living around the natural resources on the need for conservation of the resources</li> <li>- Identify and map all disaster-prone areas for sustainable management.</li> </ul>
8	<b>Integrated Transportation Network</b>	Transport and land use planning shall be integrated	<ul style="list-style-type: none"> <li>- Repossess all illegally acquired land for transport Infrastructure</li> <li>- Incorporate the needs of persons with disability in all the planning, development and management of the transport network</li> </ul>

	<b>Sector/Area</b>	<b>Policy</b>	<b>Measures</b>
			<ul style="list-style-type: none"> <li>- Plan rural based activities to support transit systems</li> <li>- Enforce development control as a tool of land use planning in urban and rural areas</li> <li>- Enhance the planting of trees, greenery as buffer zones to roads, railway and the airstrip</li> </ul>
		An integrated and functional transport system for the urban areas shall be developed	<ul style="list-style-type: none"> <li>- Provide access and linkage, between county and sub-county's headquarters and for local access and link them to national transportation corridors</li> <li>- Develop roads connecting infrastructure installations of county and national importance and resource areas to bitumen standard</li> </ul>
		Efficient and affordable Mass Public Transport for main urban areas	<ul style="list-style-type: none"> <li>- Integrate land use with urban transport planning</li> <li>- Design and develop integrated transport networks that considers all different modes of transport</li> <li>- Designate, harmonize and regulate terminal, interchange and pick-up and drop-off facilities</li> </ul>
		An urban transport policy that facilitates an integrated, balanced and environmentally sound urban transport system	<ul style="list-style-type: none"> <li>- Prepare and implement an integrated Transport Plan for urban and rural areas,</li> </ul>

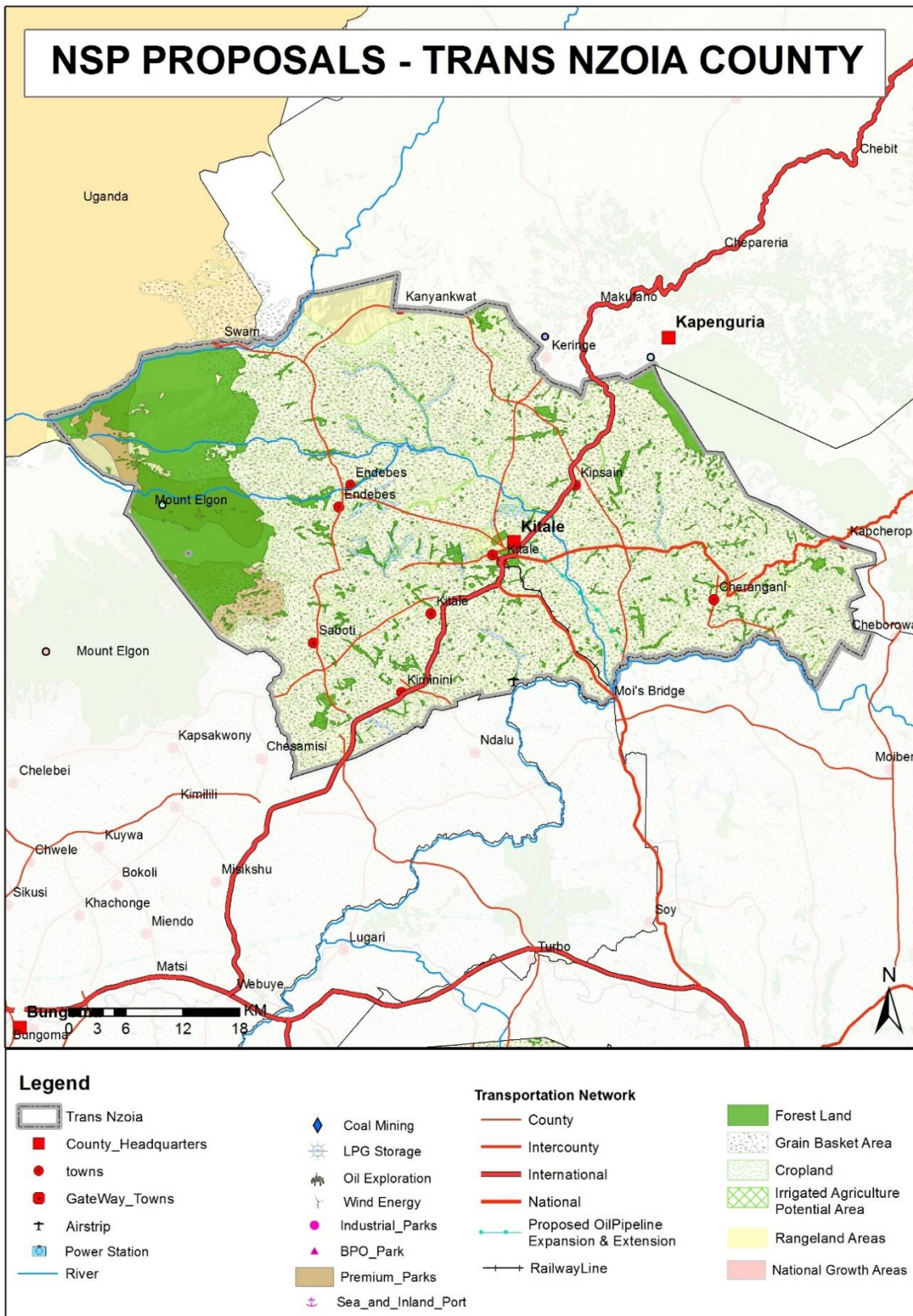
	<b>Sector/Area</b>	<b>Policy</b>	<b>Measures</b>
		Uphold Environmental conservation in the planning, development and management of the transportation network	<ul style="list-style-type: none"> <li>- Construction and management of the local transport network to abide by environmental regulations and standards</li> <li>- Promote the use of green energy in all transportation systems</li> </ul>
9	<b>Providing Appropriate Infrastructure</b>	Promote Safe, adequate, reliable and affordable electricity for both urban and rural settlements	<ul style="list-style-type: none"> <li>- Promote safe connections for all informal settlements in urban areas for safety</li> <li>- Mainstream and enforce green energy options in the design of buildings</li> <li>- Explore alternative options of power generation such as biomass, solar energy</li> </ul>
		Expansion and improvement of water reticulation systems to facilitate the access to clean, safe, adequate, reliable and affordable water in human settlements shall be promoted	<ul style="list-style-type: none"> <li>- Construct and rehabilitate water supply systems in the county</li> <li>- Incorporate water provision in all physical/spatial development plans</li> <li>- Rehabilitate and protect Mt. Elgon and Cherangani Hills water towers</li> <li>- Construct and rehabilitate rural water schemes and drill boreholes to supplement</li> </ul>
		A network of functional, efficient, safe, accessible and sustainable national health referral infrastructure shall be established	<ul style="list-style-type: none"> <li>- Increase the utilization of services at lower levels of the health services</li> <li>- Improve preparedness and response to emergencies and disasters</li> </ul>

	<b>Sector/Area</b>	<b>Policy</b>	<b>Measures</b>
			<ul style="list-style-type: none"> <li>- Modernization of infrastructure and hospital equipment at Kitale County Referral Hospital and Mt. Elgon Hospital</li> </ul>
		<p>Appropriate, quality, efficient and cost effective ICT infrastructure in both rural and urban areas shall be promoted</p>	<ul style="list-style-type: none"> <li>- Promote the expansion ICT infrastructure to cover all the rural and local growth centres</li> <li>- Mainstream use of ICT in all levels of government and the private sector (e-government).</li> </ul>
		<p>Promote the expansion of sewerage systems and waste management facilities to improve sanitation in human settlements</p>	<ul style="list-style-type: none"> <li>- Service all urban settlements by a centralized sewerage treatment system and solid waste disposal facilities</li> <li>- Apply appropriate technology solutions to sewerage treatment in rural and low-density housing areas</li> <li>- All spatial plans to make provision for development of sewer systems and treatment works and solid waste disposal</li> <li>- Undertake rehabilitation of storm water drainage systems</li> <li>- Construct waste water treatment plants and solid waste management projects in well-established rural settlements and growth areas</li> <li>- Enact county laws to incorporate private public partnerships in infrastructure investments</li> </ul>

	<b>Sector/Area</b>	<b>Policy</b>	<b>Measures</b>
		Sporting infrastructure shall be planned, developed, maintained and the existing rehabilitated to promote sports development	<ul style="list-style-type: none"> <li>- Establish a County Sports Talent Center to scout, tap, nurture and develop sports talents</li> <li>- Undertake to rehabilitate Kenyatta stadium at Kitale to international standards to enable the youth to actively develop and tap the immense talent in sports</li> </ul>
10	<b>Towards a Rapidly Industrializing</b>	Specific sites for industrial development shall be identified, planned and serviced	<ul style="list-style-type: none"> <li>- Plan and set aside land for industrial development in every sub-county</li> <li>- Integrate the industrialization process and environment conservation</li> <li>- Revive and invest in the collapsed agro-based industries in the county</li> </ul>
		Adequate and affordable energy supply for the industrial sector shall be provided	<ul style="list-style-type: none"> <li>- Adopt renewable energy generation programmes</li> <li>- Incentivize large industries to promote co-generation of power</li> <li>- Promote the adoption of energy efficient technologies to lower the demand for energy</li> </ul>

The map below depicts some of the proposals highlighted in the Policy measures above

Map 3: NSP Proposals



## **5 5. IMPLEMENTATION AND ADOPTION OF THE GUIDELINES**

### **5.1 Introduction**

The implementation framework identifies activities and further ties them with responsible actors, resources and timeframes adequate for their execution. It constitutes a deliberately established method, means or system of ensuring that the policies, strategies and measures outlined in the guidelines are continuously and consistently executed to achieve their objectives.

To effectively implement the guidelines, the various sectors, actors and levels of planning have been identified and have to work together and the mandate of the sectors at the National and County levels of planning have to be integrated.

### **5.2 Implementation Channels**

The County Specific Guidelines will be implemented through various approaches including:

1. Preparation of spatial plans to integrate and conform to the proposals of the County Guidelines. The plans include:
  - Inter-County Physical and Land Use Development Plans for Metropolitan regions, conservation zones, river basins, water towers, coastal ecosystems, trans-boundary resource areas and transport corridors, among others.
  - County Physical and Land Use Development Plans.
  - Local Physical and Land Use Development plans for Cities, Urban areas, special area plans, subject plans and detailed neighbourhood plans, among others.
  - Sectoral plans
2. Integration of the guideline policies, strategies and measures into the County sector plans, programs and projects. Ministries, Departments and Agencies (MDAs), County and National Departments identified in the plan to administer the policies, strategies and measures are required to translate them into action plans, programmes and projects and to include them in their subsequent sector plans.
3. Formulation of policies, regulations and standards to guide development control

### **5.3 Implementation Framework**

The implementation of the various policies, strategies, measures, programmes and projects under these Guidelines will involve a wide range of actors. It will require a coordinated approach and partnership between the National and County Governments and non-state actors. It may require re-engineering of institutions and a number of actors to undertake the implementation through a harmonized approach.

The National Spatial Plan identified a multi-leveled framework for implementation of the plan that incorporates all levels of actors. In this regard, the institutions identified in the NSP to undertake implementation of the plan at County-level shall also be mandated to ensure implementation of this Guidelines.

The following are the Institutions mandated to ensure implementation of the County Specific guidelines;

#### **5.3.1 County Physical Planning Committee**

The role of the County Planning Committee shall be to ensure aspirations of the guidelines are articulated in preparation of the County Spatial Plans, County Integrated Development Plans and Local Physical and Land Use Development Plans.

The composition of this committee consists of;

- i. The Governor who will be the Chairperson,
- ii. the Deputy Governor,
- iii. the County Executive Committee Members from various sectors
- iv. Directors from various relevant County Departments including Lands and Physical Planning, Economic planning, Agriculture, Industrialization, Tourism, Environment, Transport and Infrastructure

The functions of the committee include;

- 1) To promote effective integration between physical, economic and sectoral planning within the framework of county development policies.
- 2) To provide policy guidance for the implementation of strategic spatial projects
- 3) To ensure that the guidelines policies and measures are mainstreamed in the various county plans.
- 4) To mobilize resource for implementation of the Guidelines.

### **5.3.2 County Planning Unit (CPU)**

The technical Unit shall provide technical support to the various implementing County departments on issues relating to physical planning.

The CPU shall;

- i. Monitor the Implementation of the guidelines.
- ii. To disseminate components of the guidelines to the various county departments.
- iii. Update the County Physical Planning Committee on a regular basis on the implementation of the guidelines.

The County Director of Physical Planning shall be responsible for preparation of an annual state of planning report which shall among other things appraise the status of implementation of the guidelines.

### **5.3.3 National Land Commission**

The National Land Commission shall play its oversight role in land use planning to ensure efficient implementation of the NSP and the guidelines. Other functions of the Commission in the implementation of the NSP and the guidelines include the following:  
- To formulate mechanisms and parameters for monitoring and overseeing land use planning.

- i. To ensure that relevant planning authorities carry out their functions as required by law.
- ii. To make recommendations for improvements of the planning systems in the county.
- iii. To mobilize resources to support physical/land use planning.

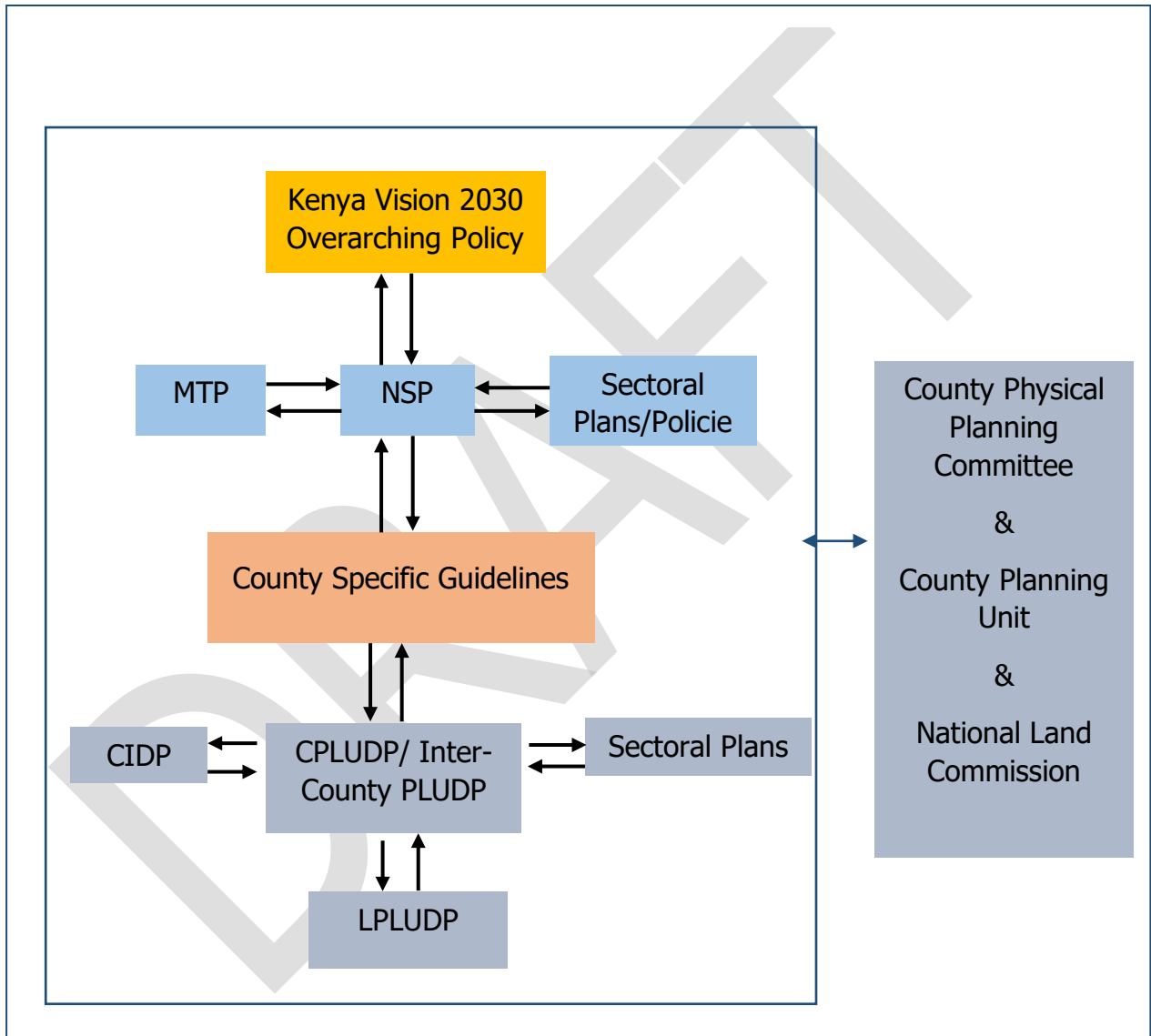
## **5.4 Monitoring and Evaluation**

Implementation of the guidelines will be monitored and evaluated to measure both outputs and outcomes and ensure that the intended actions are implemented in a timely manner. To facilitate attainment of the objectives of the guidelines, performance indicators will be developed by the County Physical Planning Department

for efficient monitoring. Periodic reports will be prepared in relation to progress being made in their implementation.

The graphic below illustrates the implementation structure for County Specific guidelines.

Figure 4: Implementation structure of the guidelines



Source: State Department for Physical Planning, 2022

## **5.5 CONCLUSION**

The application of these guidelines will be undertaken by a number of actors and hence the need for a coordinated approach. The lead agency will be Trans Nzoia County Government which will be responsible for implementing various county specific initiatives proposed by the guidelines.

The National Government, County Government of Trans Nzoia the private sector and the general public will be critical in actualizing the objectives of these guidelines. The County Physical Planning Committee shall develop a communication strategy to enhance the synergies.

The National Department of Physical Planning shall undertake sensitization, training and capacity building of the County Government and National Government institutions and agencies that will be involved in the implementation of these guidelines. Special attention will be given to the County physical planning units, as they will be expected to provide technical expertise in the implementation of the County specific policies and strategies.