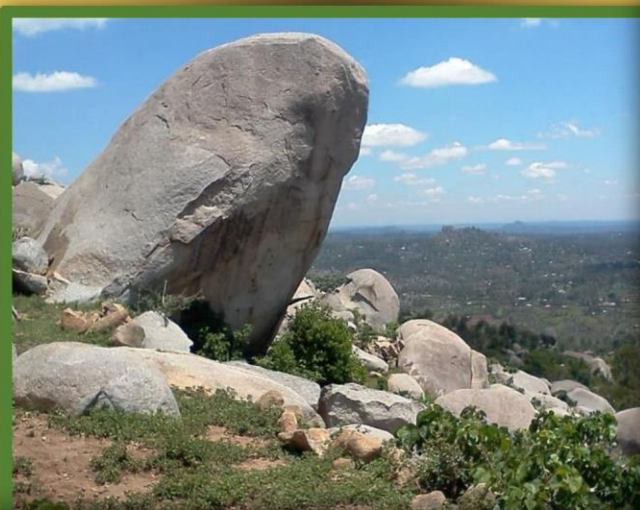




# NATIONAL SPATIAL PLAN GUIDELINES FOR VIHIGA COUNTY

Optimal productivity, sustainability, efficiency and equity in  
use of our land and territorial space



©JUNE 2022

MINISTRY OF LANDS AND PHYSICAL PLANNING  
DEPARTMENT OF PHYSICAL PLANNING

## **FOREWORD**

The Constitution of Kenya apportions responsibility of planning to both National and County Governments. Under the Fourth Schedule on distribution of functions, Part 1 (21) and (32) mandates the National Government with the responsibility of formulating general principles of land planning, co-ordination of planning by the Counties, capacity building and technical assistance to the Counties. On the other hand, Part 2(8) allocates the function of County planning and development to County Governments. It is under these provisions that the County specific guidelines have been prepared.

The Department of Physical Planning prepared the National Spatial Plan (NSP) in response to the Kenya Vision 2030 to guide the spatial development of the country over a period of 30 years beginning in 2015.

It aims at achieving an organized, integrated, sustainable and balanced development of the country by providing a framework for better national organization and linkages between different activities within the national space.

To implement the Plan, the Counties are expected to play a key role by mainstreaming strategies, policies, and measures identified in the NSP into the County spatial planning systems.

The guidelines have identified planning policies, strategies, and measures that Plans at the County level are expected to mainstream and propagate. The policies address among others, the protection of rich agricultural land, development imbalances, conservation of environmentally sensitive areas, urban containment, and promotion of industrial development.

The guidelines provide direction on the existing potentials, the opportunities, the constraints/challenges inhibiting harnessing of the potentials, the strategies to apply, respective policies required, and the necessary measures to achieve optimal productivity, sustainability, efficiency and equity in the use of county land resources.

The guidelines are an opportunity on how best to refocus, vary and complement areas that require different approaches responding to country-specific needs and promote the livelihoods of their people, while contributing to the national aspirations of vision 2030, regional objectives of the Africa Agenda 2063, and international targets of sustainable development. The refocusing will also be handy in reviewing and making decisions on NSP which is due for review in 2025.

These guidelines are therefore a tool for enhancing this critical path and provide a direction for development planning by the Counties as they discharge their responsibility of preparing county and local physical and land use development plans. The guidelines will also ensure that the County Integrated Development Plans conform to the proposed County specific policy guidelines and measures.

## **PREFACE**

The National Spatial Plan(NSP) recognizes that Kenya is greatly endowed with massive and diverse resources distributed over the national space that require an integrated and coordinated approach for optimal productivity and sustainability.

The County Specific Guidelines have been derived from the National Spatial Plan and provide a planning framework for the integration of the NSP into the county spatial planning system. They are clear statements linking the National Spatial Plan to Inter-County, County and lower-level Physical and Land Use Development Plans and provide clarification on the anticipated sustainable development outcomes of implementing the Plan.

The County Government will adopt, develop and implement their plans based on the policies, strategies, and measures articulated in the guidelines. The realized county plans are expected to guide, harmonize and facilitate development within the county, hence contributing to the overall implementation of the NSP.

The guidelines also form an efficient compass and monitoring tool for National and County Governments to jointly pursue sustainable planning and appropriate implementation mechanisms.

For the county to be nationally competitive, there is need to balance development and promote optimal utilization of land and land-based resources as well as cultivate an integrated approach in addressing the intertwined challenges of regional imbalances/inequalities, rural development, underutilization of the available resources, uncontrolled urbanization, environmental degradation and inefficient transportation. It is imperative therefore, to prioritize the implementation of this strategic document so as to promote balanced development and competitiveness across the county

## **EXECUTIVE SUMMARY**

The County Specific Guidelines seek to facilitate the implementation of the National Spatial Plan by outlining policies, strategies and measures to guide County spatial planning and development and promote optimal productivity, sustainability, efficiency and equity in the use of land. They provide a framework for preparation of lower level Plans including Inter-County, County and Local Physical and Land Use Development Plans.

The disconnect between National and County Spatial Planning and development has resulted in uncoordinated and unbalanced development, therefore creating a need for a clear structure that links National, Regional and Local planning and development. This is achievable through integration of the policies, strategies and measures proposed by the guidelines into County Spatial Plans, Programs and Projects, to tackle challenges of unbalanced regional development, urbanization, national competitiveness and unsustainable use of land and natural resources.

The County Specific Guidelines are organized into five chapters detailing various facets. Chapter one provides an overview, purpose and justification of preparation of the guidelines. It also outlines the objectives that the guidelines intend to achieve and details the preparation process as well as intended users. This chapter highlights the key principles that form the basis for preparation of lower level plans including public participation, liveability, sustainable development, urban containment, smart urban growth among others.

Chapter two details the legal and policy provisions that the guidelines are anchored upon. They include, among others, The Constitution of Kenya, 2010, The Physical and Land Use Planning Act No.13 of 2019, County Government Act, 2012, Environmental Management and Coordination (Amendment) Act, 2015, Sessional Paper No. 01 of 2017 on National Land Use Policy and Sessional Paper No. 10 of 2012 on Kenya Vision 2030.

The third chapter analyses the county profile, detailing its location, size, bio-physical characteristics, socioeconomic status and the County's comparative advantage in relation to others. The locational context provides information on the geographical

position and bordering Counties while the biophysical context discusses the topography, hydrology and climate. The socioeconomic status indicates key economic drivers of the County and its population and demographic structure.

Chapter four presents the County specific issues and proposes development strategies to promote national competitiveness, optimal use of land and resources, rural development, balanced intra-county development and urbanization. Additionally, it provides policy guidelines and measures for County advancement.

The final chapter five focuses on implementation and adoption of the guidelines. The implementation framework identifies institutions, County development programs and projects, and further ties them with responsible actors, resources and timeframes for effective execution. It proposes a framework for ensuring that the outlined policies, strategies and measures are adequately implemented.

## Table of Contents

PREFACE .....	iv
Table of Contents.....	vii
List of Figures .....	ix
List of Maps.....	ix
List of Tables .....	ix
1 INTRODUCTION.....	10
1.1 Background.....	10
1.2 Purpose.....	10
1.3 Objectives .....	11
1.4 Scope.....	11
1.5 Justification .....	12
1.6 Application of the Guidelines.....	12
1.7 Process of preparing the Guidelines .....	13
1.8 Targeted users of the Guidelines.....	14
1.9 Key Principles .....	15
2 THE POLICY, LEGAL AND PLANNING FRAMEWORK FOR THE GUIDELINES .....	17
2.1 Constitutional context .....	17
2.2 Policy Context.....	17
2.2.1 Sessional Paper No. 10 of 2012 on Kenya Vision 2030 .....	17
2.2.2 Sessional Paper No. 01 of 2017 on National Land Use Policy .....	17
2.3 Legal context.....	18
2.3.1 The Physical and Land Use Planning Act No. 13 of 2019.....	18
2.3.2 County Governments Act, 2012 .....	18
2.3.3 Urban Areas and Cities (Amendment) Act, 2019 .....	18
2.3.4 Environmental Management and Coordination (Amendment) Act, 2015....	18
2.3.5 National Land Commission Act, 2012 .....	18

2.4	Planning Context .....	19
2.4.1	National Spatial Plan (NSP).....	19
2.4.2	NSP linkage to other plans .....	20
3	CHAPTER THREE: COUNTY PROFILE .....	22
3.1	3.1 overview.....	22
3.2	3.2 Locational and Size .....	22
3.3	3.3 Bio-Physical Characteristics .....	24
3.4	3.4 Socio-economic Status.....	24
3.4.1	Population and Demography.....	24
3.4.2	Economy .....	25
3.4.3	Physical Infrastructure .....	25
3.4.5	Public Utilities .....	26
3.5	3.5 Comparative Advantage.....	27
4	DEVELOPMENT STRATEGIES AND POLICY GUIDELINES for VIHIGA COUNTY .....	28
4.1	4.1 County Specific Issues and Development Strategies .....	28
4.2	4.2 National Spatial Plan Policy Guidelines and Measures for Bomet County....	40
5	IMPLEMENTATION AND ADOPTION OF THE GUIDELINES.....	53
5.1	Overview.....	53
5.2	Implementation Approaches .....	53
5.3	Implementation Framework.....	54
5.3.1	County Physical Planning Committee.....	54
5.3.2	County Planning Unit (CPU).....	55
5.3.3	National Land Commission .....	55
5.4	Monitoring and Evaluation .....	55
5.5	Conclusion.....	57

## **List of Figures**

Figure 1: The Scope of the Guidelines .....	12
Figure 2: Policy Focus of the NSP .....	19
Figure 3: NSP Linkage to other Plans.....	21
Figure 4: Implementation structure of the guidelines.....	56

## **List of Maps**

<i>Map 1: Location of Vihiga County.....</i>	<i>23</i>
<i>Map 2: Existing Situation of Vihiga County.....</i>	<i>26</i>
<i>Map 3: NSP Proposals for Vihiga County.....</i>	<i>52</i>

## **List of Tables**

Table 1: Targeted Users of the Guidelines .....	14
<i>Table 2: Population Projection to the year 2045.....</i>	<i>24</i>
<i>Table 3: County Specific Issues and Development Strategies.....</i>	<i>30</i>
Table 4: NSP Policy guidelines and measures for the County .....	41

# **1 INTRODUCTION**

## **1.1 Background**

The County Guidelines set out policies, strategies and measures that will guide the long-term spatial development of the county for a period of 30 years. They cover the entire county and defines the general trend and direction of its spatial development.

The guidelines have been developed in line with the four thematic areas as outlined in the NSP. They provide a guide to the Planning Authority at the county on how to incorporate the NSP policies, strategies and measures during the preparation of County Spatial Plans and other lower level plans like the Local Physical and Land Use Development Plans consequently implementing the NSP.

The NSP County Specific implementation guidelines summarize the County's existing potentials and opportunities, the constraints (challenges) inhibiting harnessing of the potentials, the applicable strategies and respective policies required, and the necessary measures to achieve optimal productivity, sustainability, efficiency and equity in the use of the county land resources. They act as a reference point

## **1.2 Purpose**

The purpose of the County Specific Guidelines is to provide a planning framework for mainstreaming of the National Spatial Plan to the County spatial planning system.

The guidelines are intended to assist the County enhance the implementation of the NSP by linking the proposed county specific policies, strategies and measures into the County plans, programs and projects while putting measures in place for achieving them. The guidelines inform preparation of various County Physical Plans such as the County Physical and Land Use Development Plans.

For optimal implementation of these plans, a County Integrated Development Plan (CIDP) is essential since it is a sectoral and budgetary based plan that draws its implementation programs and projects from the County Physical Plans.

### **1.3 Objectives**

The guidelines provide policies, strategies and measures to deal with challenges of regional imbalances/inequalities, rural development, underutilization of the available resources, urbanization, environmental degradation and inefficient transportation.

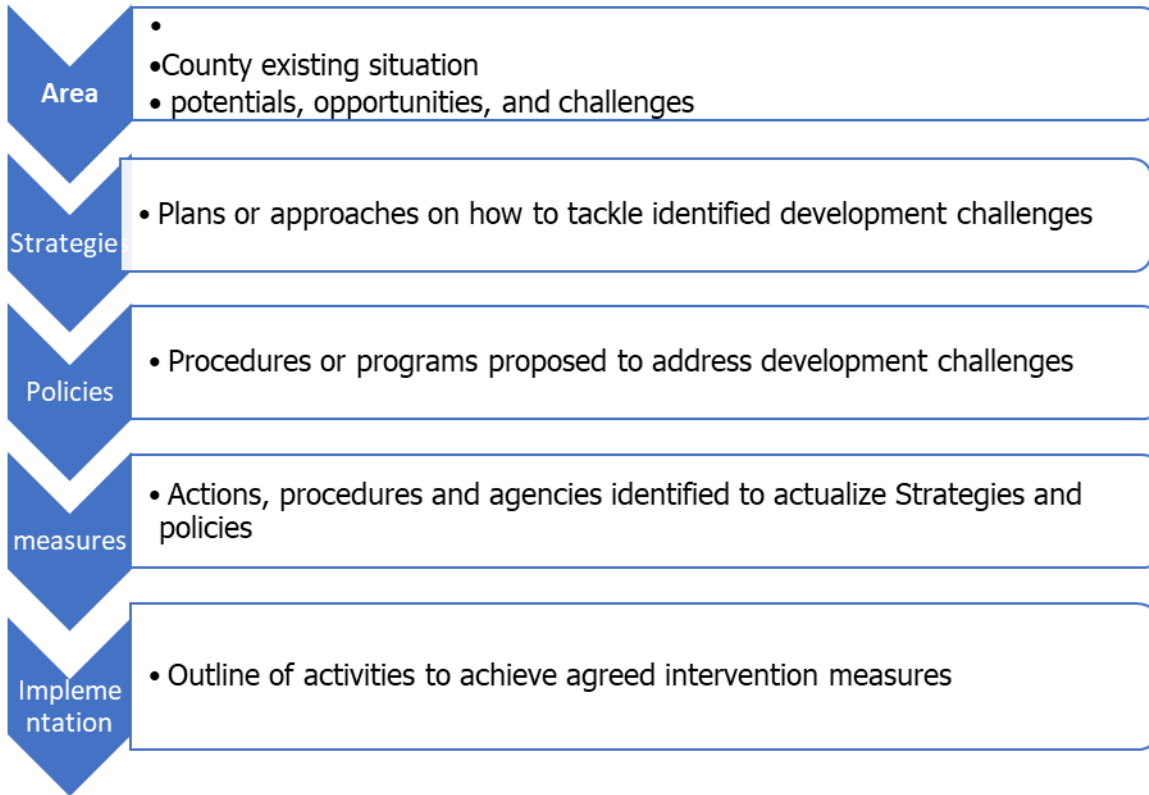
Specifically, the objectives are;

1. To sensitize the County on the provisions of the NSP
2. To promote synergy between National and County planning
3. To guide the County, implement the NSP
4. To identify the roles of the different actors in the implementation of the NSP.

### **1.4 Scope**

The guidelines comprise policies, strategies and measures specific to Vihiga County covering approximately 531.0 km<sup>2</sup>. The guidelines highlight the County's existing potentials and opportunities, the constraints (challenges) inhibiting harnessing of the potentials, the applicable strategies and respective policies required, and the necessary measures, actions, approaches, plans and procedures prescribed to achieve optimal productivity, sustainability, efficiency and equity in the use of the county's land resources and an outline of activities to execute agreed interventions as captured in the National Spatial Plan, as indicated in Figure 1 below. These guidelines are effective up to the year 2045.

**Figure 1: The Scope of the Guidelines**



**Source: State Department for Physical Planning, 2022**

## **1.5 Justification**

Since the approval and launch of the NSP, its implementation has been undertaken in an uncoordinated manner hence the guidelines will provide a standardized approach for all Counties. The guidelines are also an important tool for tracking and evaluating implementation of the NSP both at National and County levels.

The preparation of County Spatial Plans and other lower-level plans which is a mandate of Counties has been slow and, in some Counties, has not begun at all. These guidelines are therefore a quick reference in preparation of county plans and for some Counties to help optimize land in the absence of these plans.

## **1.6 Application of the Guidelines**

The guidelines will be used or applied in the following ways to achieve a more sustained and coordinated development of the County;

- To effectively coordinate planning between the National and the County Government;
- To improve the County Government's capacity to formulate, coordinate and implement integrated development policies, strategies, measures, programs and projects to address spatially unbalanced development;
- To inform strategic infrastructure policy and public investment decisions which support the achievement of balanced development in the County;
- To strengthen County inter-sectoral coordination within a spatial framework and provide the private sector with a clear context in which they can make investment decisions;
- To optimize the use of land and natural resources by providing a framework for making sustainable locational choices for sustainable development and conservation of land productivity in the County.

### **1.7 Process of preparing the Guidelines**

The process involved reviewing the National Spatial Plan and identifying key issues, spatial policies, development strategies and measures specific to Bomet County. These key issues, spatial policies, development strategies and measures will be realized through preparation of County and other lower-level plans.

Research was undertaken on various thematic areas to enrich the County specific issues and development strategies as well as policy guidelines and measures/ interventions. Further, preparation of the guidelines considered the constitutional, policy and legal provisions on physical and land use planning. Expert opinion was sought on the identified issues, policies, measures and strategies for implementation viability.

The preparation of the guidelines was identified as one of the implementation tools of the NSP, in which key NSP issues, policies, strategies and measures were translated into specific action plans, programs and projects at the County level.

## 1.8 Targeted users of the Guidelines

These Guidelines have diverse consumers and application depending on prevailing circumstances and actors as demonstrated in Table 1 below:

**Table 1: Targeted Users of the Guidelines**

User	Application
County Executive Committee Member in charge of Physical and Land Use Planning	<ul style="list-style-type: none"> <li>• Preparation of county and lower-level plans</li> <li>• Linkage of planning structures</li> <li>• Quality control of the various county plans</li> <li>• Formulate county planning policies and strategies</li> <li>• Establish county specific planning institutions</li> <li>• Coordinate and implement county plans and policies</li> </ul>
The County Director of Physical and Land Use planning	<ul style="list-style-type: none"> <li>• Advising the county government on the impact of the county specific guidelines to the county</li> <li>• Preparation of County physical and land use development plans and other lower level plans</li> <li>• Formulating County physical and land use planning policies, guidelines, strategies, and standards;</li> <li>• Issuance of development permission and other development control instruments under The Physical and Land Use Planning Act, 2013.</li> </ul>
Licensed physical and land use planners both in public and private sectors	<ul style="list-style-type: none"> <li>• Prepare, coordinate and implement spatial plans</li> <li>• Quality control of plans and consultancy services</li> <li>• Formulate policies, strategies and development guidelines</li> <li>• Dispute resolution</li> </ul>
County assembly	<ul style="list-style-type: none"> <li>• Approval of strategic sectoral budgets such as planning</li> <li>• Vetting of various County specific plans</li> <li>• Formulation and passing of County planning legislation</li> <li>• Enhance capacity to oversee the executive on spatial planning</li> </ul>
Ministries, Departments and Agencies	<ul style="list-style-type: none"> <li>• Mainstreaming relevant NSP policies, programs and projects</li> <li>• Allocation of resources to priority areas,</li> <li>• Strengthening linkages with spatial planning in resource management</li> </ul>
The National Land Commission (NLC)	<ul style="list-style-type: none"> <li>• Oversight role in land use planning to ensure efficient implementation of the NSP</li> <li>• Ensure relevant planning authorities carry out their functions as required by the law</li> </ul>

Practitioners in the built environment	<ul style="list-style-type: none"> <li>• Advance NSP relevant policies, programs and projects hence optimization of land resource</li> <li>• Appreciate sectoral Linkages to spatial planning</li> <li>• Facilitate incorporation of the policies, strategies and measures into, County specific plans</li> </ul>
Community, developers and investors	<ul style="list-style-type: none"> <li>• Comprehend the County priority sectors and County Plans and policies</li> <li>• Complement County spatial planning and implementation measures</li> <li>• Making informed investment decisions</li> </ul>
Development partners	<ul style="list-style-type: none"> <li>• Reference frame for selecting and funding spatial planning activities</li> <li>• Understand planning linkages and implementation</li> <li>• Informed development decisions</li> </ul>
Training institutions	<ul style="list-style-type: none"> <li>• Compliment the curriculum for training of spatial planners</li> <li>• Understand the planning procedures and processes</li> </ul>

## 1.9 Key Principles

The principles, as applied in the NSP, should guide and form the basis upon which the lower-level physical and land use plans are prepared. Further the principles should ensure sustainable, coordinated, and realistic development. They include the following:

**1. Effective Public participation/engagement:** All plans shall be prepared in a participatory and consultative manner with relevant stakeholders and sectoral actors.

**2. Urban containment/Compact cities:** Local plans shall strive to limit and control urban growth within the set urban boundaries to protect rich agricultural land, mitigate urban sprawl and reduce cost of infrastructural provision.

**3. Livability:** The planning of urban areas shall enhance the livability index in the area of housing, environment, transportation, health, and social engagement. The urban areas must be economically viable, socially inclusive and ecologically sustainable.

**4. Smart and green urban growth:** Plans shall promote sustainable use of energy, creation of green spaces, reduce the need for car travel, and promote use of local materials, support businesses, protection of heritage and creation of unique character.

**5. Sustainable development:** Balancing social, economic and environmental dimensions of development and catering for current and future generations.

**6. Promotion of ecological integrity:** Plans shall promote the protection and conservation of environmentally sensitive areas.

**7. Promote public transportation:** Favor public transportation over private transport to ensure efficiency and functionality of urban places.

**8. Balanced development:** Plans to ensure there/ is balanced development in the County to cure inequalities.

## **2 THE POLICY, LEGAL AND PLANNING FRAMEWORK FOR THE GUIDELINES**

### **2.1 Constitutional context**

The formulation of these guidelines took into account the Constitution of Kenya 2010 aspirations and Principles. Article 66 of the Constitution of Kenya 2010 gives the State powers to regulate use of any land and property in the interest of land use planning among others. The guidelines are therefore within and in response to the aspirations, values and principles as provided for in the constitution.

### **2.2 Policy Context**

#### **2.2.1 Sessional Paper No. 10 of 2012 on Kenya Vision 2030**

Kenya Vision 2030 is the overarching national development framework which all plans should be aligned to. The preparation of all spatial plans should take cognizance of the aspirations, foundations and development concepts of the vision. The preparation of the first National Spatial Plan is identified in Kenya Vision 2030 as a flagship project and is regarded as one of the foundations for socio-economic transformation. Hence the need for linkage between national planning and county planning which will be achieved through mainstreaming NSP requirements into CSPs and other lower-level plans by preparing NSP county specific guidelines to implement the NSP at lower levels.

#### **2.2.2 Sessional Paper No. 01 of 2017 on National Land Use Policy**

The policy was formulated to address the various challenges related to land use and ensure efficient, productive and sustainable use of land. The main goal of the policy is to provide legal, administrative, institutional and technological framework for optimal utilization and productivity of land related resources in a sustainable and desirable manner at national, County and community levels.

The policy recommends the preparation of a National Spatial Plan to provide an integrated framework for the development of the country including guidelines for sustainable rural and urban planning management. The policy also provides for the preparation of planning guidelines, policies and standards to be observed by County Governments and other sectoral agencies within the frameworks of approved physical and land use development plans. These guidelines have been prepared on this basis

and they are to be observed by counties in the implementation of the National Spatial Plan.

## **2.3 Legal context**

Various Acts of Parliament are in place to provide the legal framework for the implementation of the mandate provided for in Article 66 of the Constitution. The Physical and Land Use Planning Act, 2019, The Urban Areas and Cities (Amendment) Act, 2019, County Governments Act No. 17 of 2012, The Land Act No. 6 of 2012, National Land Commission Act No. 5 of 2012 among others. The NSP County specific guidelines are prepared in this context and meet this criterion.

### **2.3.1 The Physical and Land Use Planning Act No. 13 of 2019**

This is the overarching statute that provides for formulation of both National and County physical and land use planning policies, guidelines and standards. The Act further provides for administration, types, content, process and approval of the various types of Physical and Land Use Development Plans.

### **2.3.2 County Governments Act, 2012**

This statute mandates County Governments to carry out the planning function at the county level. The guidelines support preparation of the various county level plans that meet the recommended quality and standards.

### **2.3.3 Urban Areas and Cities (Amendment) Act, 2019**

The statute provides for classification of urban areas and cities, their governance and management, and for integrated development planning. The guidelines are a basis for preparation of these lower-level plans.

### **2.3.4 Environmental Management and Coordination (Amendment) Act, 2015**

The Act provides for the establishment of an appropriate legal and institutional framework for the management of the environment as well as guidelines relating to environmental management and prevention or abatement of environmental degradation. The guidelines take cognizance of this Act and will be implemented within the framework

### **2.3.5 National Land Commission Act, 2012**

The Act mandates the National Land Commission with the management and administration of public land on behalf of the National and County Governments and to

monitor and oversight physical and lands use planning in the country. The guidelines fall within the ambit of this statute and will facilitate their oversight responsibilities.

## 2.4 Planning Context

### 2.4.1 National Spatial Plan (NSP)

The National Spatial Plan (NSP) covers the whole country encompassing the exclusive economic zone. The NSP outlines policies and strategies geared towards influencing desired future distribution and organization of human activity outlined in Vision 2030 and sectoral policies and plans. It aims at achieving economic efficiency and balanced development. The various County Spatial Plans should be aligned to the policies outlined in the NSP as demonstrated in Figure 2 below.

**Figure 2: Policy Focus of the NSP**



**Source: National Spatial Plan, 2015-2045**

To actualize the NSP, a comprehensive implementation strategy has been proposed that embraces a multiplicity of actors including National Government Ministries, Departments and Agencies, County Governments and the National Land Commission. The strategy proposes the establishment of the following institutions as key in the implementation of the Plan; The National Physical Planning Council, the National Technical Committee and the County Physical Planning Committee.

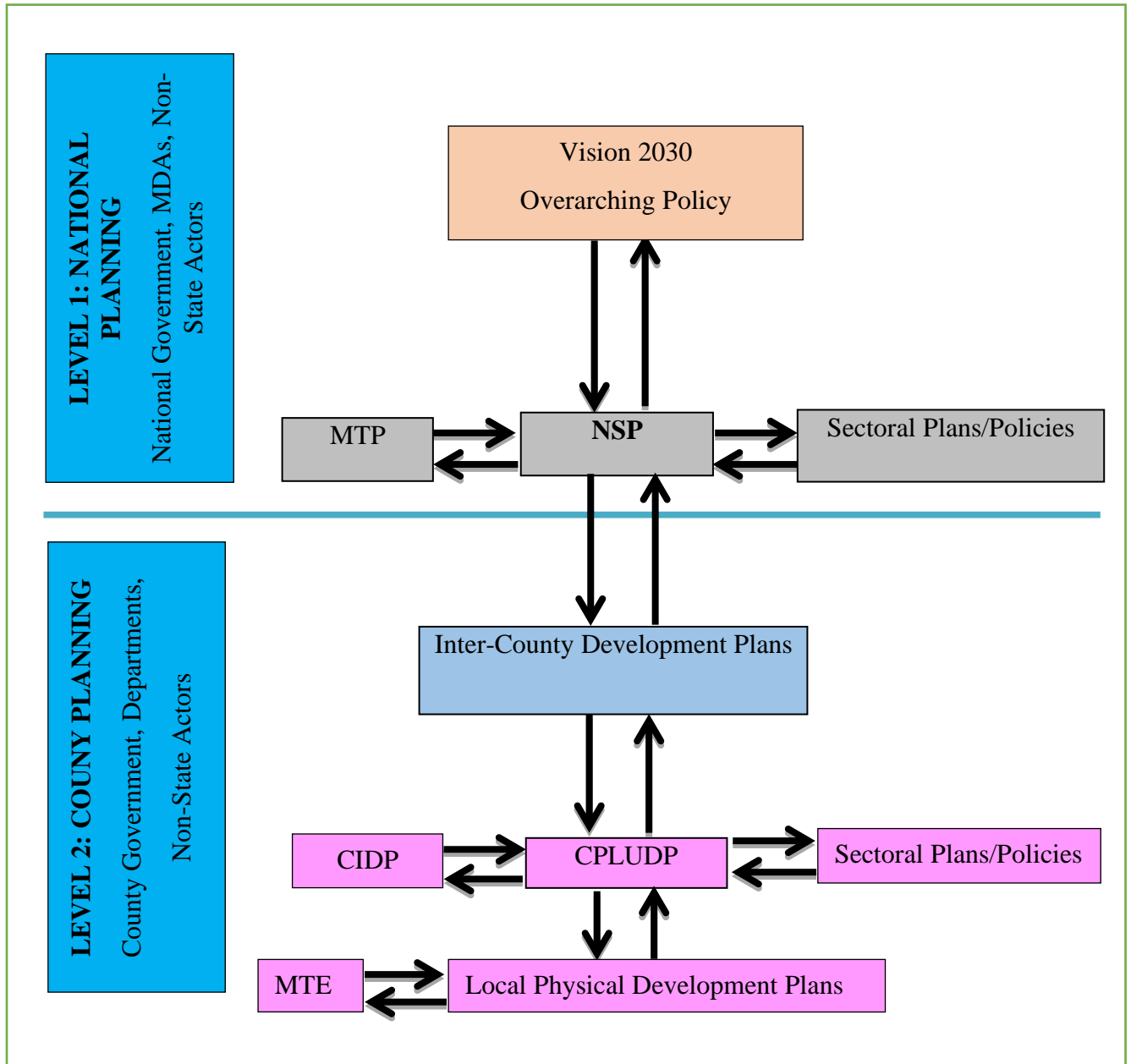
### **2.4.2 NSP linkage to other plans**

The linkage of the National Spatial Plan (NSP) to county and other lower-level plans is key to realization of its aspirations and the successful actualization of these plans. The NSP provides a spatial framework to ground the Vision 2030 flagships projects and form a basis for coordination of County policies, strategies, measures and plans.

Inter County and County plans take into considerations the policies, measures and strategies of the NSP and implements them actualizing its aspirations.

County Physical and Land Use Development Plans provide a framework where the CIDP draws its programs and projects. The implementation of the CIDP in turn leads to realization of the objectives of the County Physical and Land Use Development Plan.

**Figure 3: NSP Linkage to other Plans**



**Source: The National Spatial Plan, 2015-2045**

### **3 CHAPTER THREE: COUNTY PROFILE**

#### **3.1 3.1 overview**

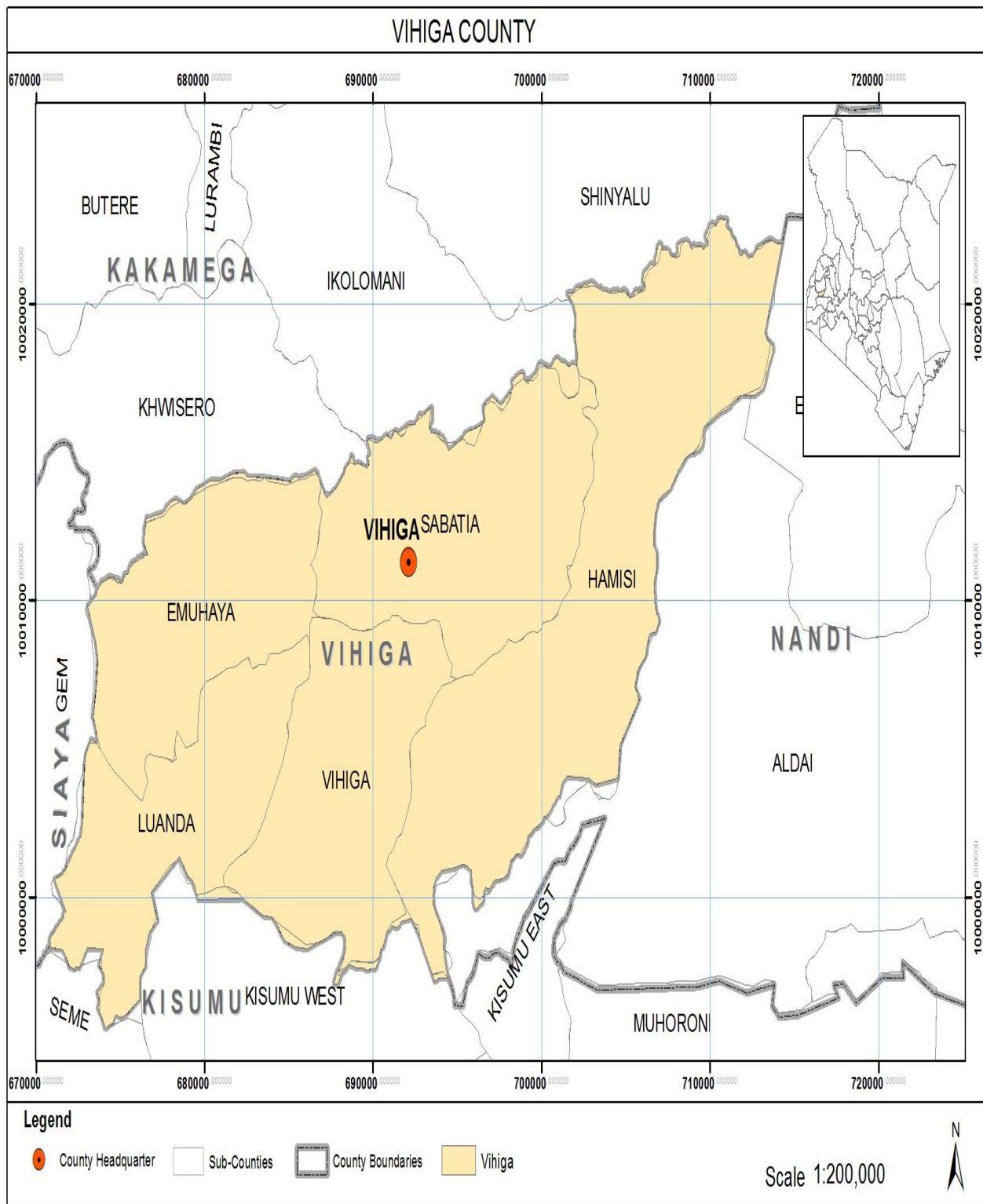
This chapter provides a description of the county in terms of the location and size, physiographic and natural conditions, demographic profile, socio-economic and infrastructural information.

#### **3.2 3.2 Locational and Size**

Vihiga County is located in the western region of Kenya between longitudes 34°30' and 35°0'E and latitudes 0° and 0°15'N. The county is bordered by Nandi County to the east, Kisumu County to the South, Siaya County to the west and Kakamega County to the North. The County covers an area of 531.0 Km<sup>2</sup>).

Map 1 below shows the location of the County in national and regional context.

Map 1: Location of Vihiga County



Source: State Department for Physical Planning, 2022

### 3.3 3.3 Bio-Physical Characteristics

Topography: Vihiga County has undulating hills and valleys with streams flowing from north-east to south-west and draining into Lake Victoria.

Water sources: there are two main rivers, Yala and Esalwa, which drain into Lake Victoria. The soils in the county are mainly sedimentary in nature. Rocky hills dot many parts of the county notably in South Maragoli, Jepkoyai, and Gambogi and around Kima.

The county experience high equatorial climate with well distributed rainfall throughout the year. It receives two rainfall seasons that is, long rains (March to April) and short rains (September, October and November). The average annual precipitation is 1900 mm. The rainfall varies from 1800 – 2000mm. Temperatures range between 14°C - 32°C, with a mean of 23°C.

### 3.4 3.4 Socio-economic Status

#### 3.4.1 Population and Demography

The population of Vihiga County from KNBS 2019 data was estimated at 590,001 (51.92% women and 48.08% men). It has an average household size of 4.1 and population density of 1046 persons per square kilometer. By the end of the planning period, the population of Vihiga County is expected to be 1,124,025 persons.

The table below shows the population projection up to the year 2045 for both male and female.

*Table 2: Population Projection to the year 2045*

Year	2019	2020	2025	2030	2035	2040	2045
Population size	590,001	604,811	684,622	774,965	877,229	992,989	1,124,025
Male	283678	290793	329166	372603	421772	477429	540431
Female	306323	314018	355456	402362	455457	515560	583594
Households	143,903	147,515	166,981	189,016	213,958	242,192	274,152
Area (km2)	563.80	563.80	563.80	563.80	563.80	563.80	563.80
Density	1046	1073	1214	1375	1556	1761	1994

**Source:** State Department for Physical Planning, 2022

### **3.4.2 Economy**

#### **Agriculture**

Agriculture is one of the activities that is carried out in the county. Some of the crops grown include tea, coffee, beans, maize and bananas. Dairy farming, poultry, fish farming as well as pig farming are practiced.

#### **Trade and Commerce**

Trade and commerce has been identified key engines of the economy due to immense contribution to employment and wealth creation. Most of trade and commerce activities is carried out in urban and trading centers.

#### **Industry**

Industrial activities contribute to the economy by offering employment, being a source of income and generally contributing to the growth of the GDP. In the county there is Mudete Tea factory plant located at Mudete which has been a source of employment to a number of people in the area.

#### **Tourism**

Tourism is practiced in Vihiga as an economic activity. It is a source of revenue generation to the county as well as a source of employment to the people. There are various hotels in the county that offers employment, revenue to the county and accommodation facilities such as Broad Park Hotel

### **3.4.3 Physical Infrastructure**

Infrastructure is key to the achievement of the National Spatial Plan objectives of global competitiveness, regional balance and optimal utilization of land and other resources. Vihiga has fairly developed infrastructure including transport, physical and social infrastructure. Which have a high potential of economically empowering its People and attracting private investors if well maintained. The sector faces problems regarding poor connection, low coverage, unreliability, high costs, skewed distribution and low/surpassed design. To rectify this situation clear indicative policy, strategies and measures have to be developed and implemented to achieve overall efficiency.

The county's main transportation system is the road network. The main road network are the A1 (Kisumu-Kakamega) and C39 (Chavakali- Kakamega) that has improved the socio-economic well-being of the county.

### 3.4.5 Public Utilities

To achieve a spatial and balanced regional development and meet demands of a growing population, there is need to develop and enhance economic infrastructure such as water services, waste management, energy and ICT to provide the foundation for economic development.

Map 2 below shows the existing situation in Vihiga County.

*Map 2: Existing Situation of Vihiga County*



*Source: State Department for Physical Planning, 2022*

### **3.5 3.5 Comparative Advantage**

#### **Land and Natural resources**

The County natural resources comprise of land, several springs, shallow wells, rivers (Yala and Esalwa) that increases water supply, promotes aquaculture production and irrigation potential in the county.

There are forests in the county which will be a source of timber and wood fuel that will earn the community income resulting to poverty reduction.

#### **Agricultural**

The county is characterised by arable land making the area suitable for farming different types of crops and flowers which increases the county's economic activity as farming is the main economic driver.

#### **Tourism**

The County has high potential for tourism due to tourist attractions like the Mungoma caves, Maragoli Hills and Kaimosi forest that contributes to county's source of revenue and community will earn livelihood from the activities that would be taking place from there.

#### **Mining**

Massive sulphide and photolytic rocks which produce acids and building murrum respectively are in abundance and which help in creation of employment in the County.

#### **Industry**

The county has potential for industrial development due to the presence of rivers, agricultural raw materials, labour, roads and market for the goods. Coffee farming can lead to reviving of coffee factory in Hamisi to improve on the processing and marketing of coffee.

## **4 DEVELOPMENT STRATEGIES AND POLICY GUIDELINES for VIHIGA COUNTY**

### **4.1 4.1 County Specific Issues and Development Strategies**

The National Spatial Plan provides strategies for spatial growth and development across the country. The strategies are aimed at providing a spatial expression to Kenya Vision 2030 and other sector policies.

This section seeks to provide strategies for spatial growth and development of the county by addressing the factors that prevent the county from achieving the intended goals and objectives. The development strategies discussed are aimed at enhancing the national impacts, optimizing use of natural resources, creating an intra-county balance and transforming rural areas. Specifically, the development strategies have been proposed to address the following aspects of the county's development agenda;

- Enhancing the national competitiveness
- Optimal use of land and other resources
- Balanced intra-county development
- Rural development in the county
- Urbanization

The following are detailed NSP sector-specific issues and strategies that apply to Vihiga County.



Table 3: County Specific Issues and Development Strategies

<b>Strategy 1: Enhancing National Competitiveness</b>		
<b>Opportunities</b>	<b>Constraints</b>	<b>Strategies</b>
<ul style="list-style-type: none"> <li>✓ Strategic location of the county which cuts across the agro-climatic zone (I and III) and presence of the A1(Kisumu- Kakamega) and C39(Chavakali- Kakamega)</li> <li>✓ Favorable agro-climatic zone that supports a variety of agricultural production</li> <li>✓ Membership in economic blocks; Lake Region Economic bloc</li> <li>✓ Diverse sources of energy potentials including green and renewable source in the County</li> <li>✓ Already embraced ICT and innovation in the County</li> </ul>	<ul style="list-style-type: none"> <li>✓ Lack of appropriate agricultural support infrastructures</li> <li>✓ High cost of production occasioned by high cost of energy</li> <li>✓ Poor state and lack of connectivity of the roads</li> <li>✓ Inadequate linkages with neighboring counties</li> <li>✓ Poor quality of services and products</li> <li>✓ Use of inappropriate farm inputs and technology</li> <li>✓ Insufficient embrace and transition to knowledge, technology and innovation based economies</li> <li>✓ Inadequate funds to manage the Bloc</li> </ul>	<ul style="list-style-type: none"> <li>✓ Plan and provide appropriate hierarchy of roads to increase internal and external linkages within the county</li> <li>✓ Encourage cooperation in planning within the Lake Region Economic Block to leverage the potential areas of collaboration with bloc members.</li> <li>✓ Provide adequate and appropriate infrastructure</li> <li>✓ Promote blue economy through exploitation of water resources in the County</li> <li>✓ Adopt modern methods and practices as well as technology in the whole range of agricultural capabilities in that county</li> <li>✓ Strengthen horticultural and service industries in the County</li> <li>✓ Encourage the emergence of ICT locations, Research oriented institutions in the county</li> </ul>
<b>Strategy 2: Optimizing Land and Natural Resources</b>		
<b>Agriculture</b>		
<b>Opportunities</b>	<b>Constraints</b>	<b>Strategies</b>

<p><b>Crop Farming</b></p> <ul style="list-style-type: none"> <li>✓ Agro-climatic zone (I- III) with high potential for agricultural production</li> <li>✓ Potential growth of various types of agricultural produce</li> <li>✓ Irrigation potentials through rivers</li> <li>✓ Existing research institutions in the neighboring Counties</li> </ul> <p><b>Livestock keeping</b></p> <ul style="list-style-type: none"> <li>✓ The county has a medium potential region of livestock keeping hence high Dairy production</li> </ul>	<ul style="list-style-type: none"> <li>✓ Uneconomical fragmentation of land parcels due to human settlements</li> <li>✓ Inadequate agricultural support infrastructure</li> <li>✓ Slow adoption of technology and innovation</li> <li>✓ Inadequate spatial frameworks to manage land uses</li> <li>✓ Low uptake of appropriate technology and skills to produce, process, preserve and market agricultural products</li> <li>✓ Use of inappropriate farm inputs and technology</li> <li>✓ Inadequate capacity, skills and resources to fund, develop and operate</li> </ul>	<ul style="list-style-type: none"> <li>✓ Formulate appropriate policy framework to stop further fragmentation of agricultural land and explore land consolidation strategy</li> <li>✓ Agricultural support infrastructure should be provided to match the function</li> <li>✓ Plan and provide appropriate roads to increase internal and external linkages within the county</li> <li>✓ Provide adequate and appropriate infrastructure</li> <li>✓ Adopt modern methods and practices as well as technology in the whole range of agricultural capabilities in the county</li> <li>✓ Formulation of policies to tap the capability and potentials of the county</li> <li>✓ Undertake research on best fishing practices in the County</li> <li>✓ Collaborate with other partners to enhance the irrigation potential</li> </ul>
<p><b>Environment (Conservation Area &amp; Protection Area)</b></p>		
<p><b>Opportunity</b></p>	<p><b>Constraint</b></p>	<p><b>Strategy</b></p>
<ul style="list-style-type: none"> <li>✓ Existing forest cover and agroforestry being practiced by the community</li> </ul>	<ul style="list-style-type: none"> <li>✓ Soil erosion</li> <li>✓ Encroachment of human settlements on hill tops and wet lands</li> </ul>	<ul style="list-style-type: none"> <li>✓ Formulate policy frameworks to protect the forest areas</li> <li>✓ Increase forest cover through</li> </ul>

<ul style="list-style-type: none"> <li>✓ Strong biodiversity conservation</li> </ul>	<ul style="list-style-type: none"> <li>✓ loss of vegetation</li> <li>✓ Planting of blue gum on water banks</li> <li>✓ Encroachment of human settlements on hill tops and wet lands</li> </ul>	<ul style="list-style-type: none"> <li>afforestation, re-afforestation and agro forestry</li> <li>✓ Sensitize the Planting of gravellia to replace blue gum on the water banks</li> </ul>
<ul style="list-style-type: none"> <li>✓ Existing natural resources (forests, wet lands, hilltops, swamps)</li> <li>✓ Existing policies and bodies dealing with environmental protection</li> </ul>	<ul style="list-style-type: none"> <li>✓ Drying up of water sources</li> <li>✓ Deforestation</li> <li>✓ Declining water quality from Pollution and extensive cultivation along river banks</li> <li>✓ Encroachment by human settlement and activities</li> <li>✓ Poor enforcement of the Environmental Acts</li> </ul>	<ul style="list-style-type: none"> <li>✓ Formulate policy frameworks to contain human settlement and hinder land use change within these areas</li> <li>✓ Formulate policy frameworks to protect water catchment areas.</li> <li>✓ Monitoring and evaluating human activities through evaluation of EIA Reports</li> <li>✓ Control water abstraction/drying by sensitizing the planting of gravellia on along the water sources</li> <li>✓ Preservation and conservation of marine biodiversity</li> </ul>
<b>Natural Resource</b>		
<b>Opportunity</b>	<b>Constraint</b>	<b>Strategy</b>
<ul style="list-style-type: none"> <li>✓ Underground water reservoirs</li> <li>✓ Support of diversification of the economy; manufacturing, processing</li> </ul>	<ul style="list-style-type: none"> <li>✓ Inadequate rain water harvesting technology</li> <li>✓ Lack of research on existing minerals</li> <li>✓ Lack of a regulatory framework in exploitation of underground water</li> <li>✓ Inadequate technology and exploration infrastructure</li> <li>✓ High costs of exploiting available natural resources</li> </ul>	<ul style="list-style-type: none"> <li>✓ Plan and provide appropriate storm water management infrastructure to optimize rain water harvesting</li> <li>✓ Formulate policies to guide regulation of underground water exploitation</li> <li>✓ Adopt sustainable exploitation of the available natural resource potential</li> <li>✓ Invest in appropriate technology and infrastructure</li> </ul>

		✓ Optimal utilization of developed green energy resources
<b>Industrial</b>		
<b>Opportunity</b>	<b>Constraint</b>	<b>Strategy</b>
<ul style="list-style-type: none"> <li>✓ High potential for urban, agro, rural, mineral based and cottage industries</li> <li>✓ Availability of cooperatives and Sacco's</li> </ul>	<ul style="list-style-type: none"> <li>✓ Poor implementation of frameworks to safeguard intellectual property rights (IPR)</li> <li>✓ Poor linkage to the markets due to inadequate internal and external connectivity and support infrastructure</li> <li>✓ Unexploited potential in the County</li> <li>✓ Low technological adaptation for value addition</li> <li>✓ High cost of production</li>   <li>✓ Price fluctuation</li> </ul>	<ul style="list-style-type: none"> <li>✓ Plan and provide appropriate hierarchy of roads to increase internal and external linkages within the county</li> <li>✓ Prepare and implement an industrial master plan</li> <li>✓ Provide appropriate technology to enhance value addition.</li> <li>✓ Diversify energy production sources to reduce costs of production and enhance its reliability</li> <li>✓ Invest in exploration of potential mineral reserves and adopt sustainable technology in brick and tile making</li> <li>✓ Promote the formation of cooperatives and Sacco's to advance marketing and control of market prices</li> <li>✓ Sensitive players in the sector on the aspect of IPR and enforce regulations on the same</li>   <li>✓ Promote assertive marketing campaigns for products both domestically and internationally</li> </ul>

<b>Tourism</b>		
<b>Opportunity</b>	<b>Constraint</b>	<b>Strategy</b>
<ul style="list-style-type: none"> <li>✓ The existing tourist attraction sites (Mungoma caves, Maragoli Hills and Kaimosi forest)</li> <li>✓ High potential for culturism and agri-tourism</li> <li>✓ Existing Agro, nature-based, cultural , medical and sport tourism attractions</li> </ul>	<ul style="list-style-type: none"> <li>✓ Over reliance on foreign tourism and few marketing ventures targeting non-traditional tourists</li> <li>✓ Encroachment of human activities into the protected areas</li> <li>✓ Little exploitation of tourism potential due to poor quality and inadequate infrastructure</li> <li>✓ Poor marketing strategies to promote tourism</li> </ul>	<ul style="list-style-type: none"> <li>✓ Plan and provide appropriate tourism support infrastructure.</li> <li>✓ Strict enforcement of the existing regulations for safeguarding protection areas</li> <li>✓ Diversify the tourism products in the County</li> <li>✓ Delegation and gazettelement of delineated natural forests, wetlands and water towers</li> <li>✓ Promote domestic tourism by providing incentives and subsidies</li> <li>✓ Open up the underutilized sites so that they be operational</li> </ul>
<b>Transport</b>		
<ul style="list-style-type: none"> <li>✓ Strategic location of the county which cuts across the agro-climatic zones (I and III) and presence of the A1 (Kisumu-Kakamega) and C39 (Chavakali- Kakamega)</li> <li>✓ Devolution leading to opening up of rural areas</li> <li>✓ Existing road network, airstrip in Kaimosi and a railway station</li> </ul>	<ul style="list-style-type: none"> <li>✓ Poor implementation urban/rural transport policy</li> <li>✓ Poor state and lack of connectivity of the roads</li> <li>✓ Inadequate public transport system, Lack of NMT Infrastructure and inappropriate modal split</li> <li>✓ Lack of coordination of activities by various agencies in charge of the sector</li> <li>✓ Encroachment on road reserves</li> <li>✓ Inadequate linkages with neighboring</li> </ul>	<ul style="list-style-type: none"> <li>✓ Plan and provide appropriate hierarchy of roads to increase internal and external linkages within the county</li> <li>✓ Plan and provide appropriate and adequate transport infrastructure and utilities</li> <li>✓ Prepare and implement sustainable mobility plans</li> <li>✓ Enforce a regulatory standard requirement for all public transport</li> </ul>

	<p>counties</p> <ul style="list-style-type: none"> <li>✓ Poor condition of the existing County roads</li> <li>✓ Urban environmental pollution</li> </ul>	<p>service operators</p> <ul style="list-style-type: none"> <li>✓ Improve the condition of all County roads to motorable standards</li> <li>✓ Encourage use of green transport</li> <li>✓ Delineate and enforce road reserve extents</li> </ul>
<b>Public Utilities</b>		
<b>Water and Sanitation</b>		
<ul style="list-style-type: none"> <li>✓ Availability of water sources (rivers, dams)</li> <li>✓ Existing sewerage system in Vihiga</li> </ul>	<ul style="list-style-type: none"> <li>✓ Population increase resulting to high demand surpassing its supply (both water and waste management)</li> <li>✓ Encroachment of human activities into catchment areas</li> <li>✓ Unreliable access to clean and sufficient water</li> <li>✓ Inadequate sewerage coverage and treatment facilities.</li> <li>✓ Contamination of the available water (Water pollution)</li> </ul>	<ul style="list-style-type: none"> <li>✓ Appropriate sanitation infrastructure including collection, disposal and treatment system be developed in all urban areas</li> <li>✓ Effective enforcement of environmental and natural resources policies, laws and regulations</li> <li>✓ Water sources and catchment areas in the County should be protected and rehabilitated by creating buffers between these sources and other non-compatible land uses</li> <li>✓ Investments in water harvesting technologies and storage facilities</li> <li>✓ Improve access to clean and safe water</li> <li>✓ Increase access to adequate sanitation facilities</li> </ul>
<b>Solid waste management</b>		
<ul style="list-style-type: none"> <li>✓ Existing policies on waste management activities in the County</li> </ul>	<ul style="list-style-type: none"> <li>• Increased solid waste generation due to increased population pressure</li> </ul>	<ul style="list-style-type: none"> <li>• Provide and upgrade the existing solid waste management facilities</li> </ul>

	<ul style="list-style-type: none"> <li>• Poorly sited dumping sites</li> <li>• Inadequate solid wastes management facilities</li> </ul>	<ul style="list-style-type: none"> <li>• Explore other modes of solid waste management such as recycling of waste materials and waste-energy facilities.</li> <li>• Promote the, Reduce, Reuse, Recycle (3Rs)</li> </ul>
<b>ENERGY</b>		
✓ Alternative energy sources	<ul style="list-style-type: none"> <li>• Under exploitation of energy resources</li> <li>• Lack of proper assessment and research on exploitation of green energy</li> <li>• Lack of relevant policy that guide the tapping and use of energy resources</li> <li>• High cost of transmission of power to consumers</li> </ul>	<ul style="list-style-type: none"> <li>• Encourage use of renewable energy</li> <li>• Develop a policy to guide the exploitation and use of potential green energy sources</li> <li>• Use of most appropriate energy consuming equipment to ensure efficient and productive use of energy</li> <li>• Advocate and plan for expansion of electricity cover to other trading centers</li> </ul>
<b>ICT (Information and Communication Technology)</b>		
<ul style="list-style-type: none"> <li>• Existing National Fiber Optic network (NOFBI)</li> </ul>	<ul style="list-style-type: none"> <li>• Poor access to ICT infrastructure</li> <li>• High cost of ICT equipment</li> <li>• Poor connection and reliability</li> </ul>	<ul style="list-style-type: none"> <li>• Improve on existing platforms such as Huduma center, BPO services and E-government</li> <li>• Increase ICT relevant infrastructure</li> <li>• Improve ICT adoption</li> <li>• Mainstream ICT in all sectors to promote service delivery</li> </ul>
<b>Strategy 3: Balanced Intra-County Development</b>		
<ul style="list-style-type: none"> <li>• Varied resource endowment including fertile soils, forests, favorable climatic conditions</li> </ul>	<ul style="list-style-type: none"> <li>• Weak linkages between rural and urban areas.</li> <li>• Lack of a spatial framework</li> </ul>	<ul style="list-style-type: none"> <li>• Establish strong rural urban linkages</li> <li>• Promote investment in sustainable tourism</li> </ul>

<ul style="list-style-type: none"> <li>• Establishment of the County under devolution</li> <li>• Enabling policy and legal frameworks</li> </ul>	<ul style="list-style-type: none"> <li>• Inadequate infrastructural facilities and services</li> <li>• Uneven distribution of infrastructure</li> <li>• Lack of the analysis of the potentials</li> <li>• Under-exploitation of resources</li> <li>• Ethicized governance system</li> <li>• Corruption</li> </ul>	<ul style="list-style-type: none"> <li>• Promote industrialization and value addition in less developed regions</li> <li>• Promote irrigation activities for improved productivity</li> <li>• Promote equal distribution of infrastructures</li> <li>• Strengthen the existing economic zones in all the regions to promote processing and value addition of the various products</li> </ul>
<p><b>Strategy 4: Promoting Rural Development</b></p>		
<ul style="list-style-type: none"> <li>• Resource endowment in rural areas (agriculture, large-scale livestock production and tourism)</li> <li>• Existing physical and social infrastructure</li> <li>• Human resource (both skilled and unskilled)</li> <li>• Enabling policy and legal frameworks</li> <li>• Devolution</li> </ul>	<ul style="list-style-type: none"> <li>• Weak rural-urban linkages</li> <li>• Inappropriate transport infrastructure and utilities</li> <li>• Inefficient and dilapidated infrastructure facilities and services</li> <li>• Poor knowledge on how to use the resources</li> <li>• Underutilization of the resources in the rural areas</li> <li>• The dispersed nature of the human settlements,</li> <li>• Fragmentation of land into uneconomical parcels due to population pressure</li> </ul>	<ul style="list-style-type: none"> <li>• Promote rural industrialization and value addition in less developed regions</li> <li>• Plan and provide strong rural urban linkages</li> <li>• Plan and develop appropriate transport and infrastructural facilities and services to support the exploitation of resources</li> <li>• Sustainable utilization of available resources in the rural areas</li> <li>• Formulate appropriate policy framework to stop further fragmentation of agricultural land and explore land consolidation strategy</li> <li>• Modernize agriculture to promote high yield production</li> <li>• Promote rural industrialization,</li> </ul>

		<p>tourism and agro-based industries in rural areas.</p>
<b>Strategy 5: Urbanization</b>		
<ul style="list-style-type: none"> <li>• Human resource (both skilled and unskilled)</li> <li>• Enabling policy framework</li> <li>• Existing infrastructure</li> <li>• Devolution of governance</li> <li>• Establishment of equalization of funds</li> </ul>	<ul style="list-style-type: none"> <li>• Weak rural-urban linkages</li> <li>• Poor implementation of development plans and planning policies</li> <li>• Poor enforcement of existing legislation on housing development and land use</li> <li>• Rapid urbanization rates</li> <li>• Inappropriate infrastructures and utilities</li> <li>• Deteriorating infrastructure</li> <li>• Poor waste management</li> <li>• Land and governance issues.</li> <li>• Proliferation of informal settlements</li> <li>• Land and governance issues</li> <li>• Urban sprawl</li> </ul>	<ul style="list-style-type: none"> <li>• Strengthen the urban rural linkages to reduce the rate of urbanization</li> <li>• Plan and provide appropriate and adequate transport infrastructure and utilities</li> <li>• Plan, implement and enforce urban plans for the existing centres to control urban sprawl and promote urban containment.</li> <li>• Provide services and infrastructure closer to the rural areas</li> <li>• Enforce, harmonize and regularly review the existing legislative and regulatory instruments</li> <li>• Promote the development of centers as per its potential and population</li> <li>• Promote sustainable waste management</li> <li>• Strengthen existing land management institutions</li> </ul>



#### **4.2 4.2 National Spatial Plan Policy Guidelines and Measures for Bomet County**

The National Spatial Plan has stipulated policies to provide a foundation upon which to anchor the strategies enumerated therein. The primary aim is to inculcate discipline in the use of land and natural resources of the country thus stemming duplication and wastage of the resources.

This section seeks to provide the spatial policy guidelines and measures aimed at promoting the achievements of the objectives of the National Spatial Plan using its guidelines. They aim at enhancing global competitiveness and economic efficiency, optimizing the use of land and natural resources, promoting the regional balanced development and conservation of the environment.

These policies are supported by a wide range of measures which spell out the specific actions to be undertaken to actualize the policy intentions. The policies shall ensure that the county is globally competitive as an investment especially in emerging sectors such as the ICT. The policies shall also be implemented by the county government's agencies responsible for planning and development control as well as the authorities responsible for land administration.

The following are policies and measures specific to Vihiga County

**Table 4: NSP Policy guidelines and measures for the County**

<b>S. No</b>	<b>area</b>	<b>Policy Guideline</b>	<b>Measures</b>
<b>1</b>	<b>Resource Potential Growth areas</b>	<ul style="list-style-type: none"> <li>• Enhanced agricultural and food production</li> <li>• Investment in physical and social infrastructure</li> <li>• Development of tourism infrastructure</li> <li>• Mineral mapping and exploitation</li> <li>• Environmental protection and conservation</li> <li>• Intensive land use</li> <li>• Sustainable urban land use and Growth</li> <li>• Balanced growth</li> <li>• Densification of built-up areas</li> </ul>	<ul style="list-style-type: none"> <li>• Infrastructure provision to support value addition initiatives and human settlement</li> <li>• Small and medium urban Centres development</li> <li>• Rural development through provision of infrastructure, agricultural sector development and related economic activities</li> <li>• Small and medium urban Centres development</li> <li>• Development and rehabilitation of key infrastructure in underserved Locations</li> <li>• Services to under-served populations</li> <li>• Environmental protection.</li> </ul>
<b>2</b>	<b>National Spatial Structure</b>	<ul style="list-style-type: none"> <li>• The National Spatial Plan shall be the basis for the preparation of lower tier development plans to achieve integrated and sustainable land use planning</li> </ul>	<ul style="list-style-type: none"> <li>• All Regional, County and Local physical/spatial plans shall be guided by the objectives and policies of the NSP.</li> <li>• Existing physical/spatial plans shall be reviewed to conform to the objectives and policies of NSP.</li> <li>• All sectoral policies shall take cognizance of the</li> </ul>

		and to promote harmony and mutual cooperation in planning in Kenya.	<p>objectives and policies of NSP</p> <ul style="list-style-type: none"> <li>• The review of the 5-year medium term plans (MTP's) shall take into account provisions of the NSP.</li> <li>• Planning authorities at the national and county levels shall be supported with adequate human, financial and technical resources to promote sustainable Physical/spatial planning and development.</li> </ul>
<b>3</b>	<b>Modernizing Agriculture</b>	Agro -climatic zones III in which Vihiga falls shall be safeguarded against the threat of urbanization and land subdivision	<ul style="list-style-type: none"> <li>• Urban spatial development plans prepared in respect of urban areas and set urban growth limits</li> <li>• High potential agricultural land falling between urban areas shall be strictly designated for agriculture production purposes</li> <li>• Subdivision of land within zones III shall be strictly regulated</li> <li>• New urban developments shall be encouraged to be located in existing brownfield areas, low potential areas and less urbanized areas</li> </ul>
		The irrigation potential of the country shall be optimized by promoting investment in irrigation agriculture for high value crops	<ul style="list-style-type: none"> <li>• Rehabilitate and expand existing irrigation schemes</li> <li>• Undertake research to identify the irrigation potential in the county</li> <li>• Establish new irrigation in areas with irrigation potential</li> <li>• Encourage small holder irrigation schemes through sensitization campaigns and reducing the cost of irrigation equipment</li> </ul>
<b>4</b>	<b>Conserving the natural environment</b>	All environmentally sensitive areas shall be protected and utilized in an sustainable manner	<ul style="list-style-type: none"> <li>• Prepare and implement integrated management plans for environmentally sensitive areas</li> <li>• Support effective implementation of related policies and laws.</li> <li>• Involve and empower communities in the management</li> </ul>
		All environmentally fragile areas shall be conserved and utilized in	

		a sustainable manner	of environmentally sensitive areas and promote environmental education and awareness
		All government agencies shall integrate environmental concerns in policy formulation, resource planning and development processes.	<ul style="list-style-type: none"> <li>Strengthen Environmental Governance and harmonize sectoral policies, legislation and regulations.</li> </ul>
<b>5</b>	<b>Rapidly Industrializing County</b>	The cluster development strategy shall be promoted to focus on proximity to raw materials and markets of region-specific products	<ul style="list-style-type: none"> <li>Mineral-based industries to be located in-situ where the minerals are found</li> <li>Locate cottage industries and crafts in-situ</li> <li>Establish infant industries in rural areas for value addition and investments opportunities</li> <li>Promote value addition in processing of local produce.</li> </ul>
		Specific sites for industrial development shall be identified, planned and serviced with the appropriate infrastructure	<ul style="list-style-type: none"> <li>Plan and set aside land for industrial development in the county</li> <li>Develop SME and Industrial Parks</li> <li>Provide appropriate support and transportation infrastructure for industrial activities</li> <li>Integrate the industrialization process and environment conservation</li> <li>Increase availability of clean water and improve sanitation</li> </ul>
		Adequate and affordable energy supply for the industrial sector shall be provided	<ul style="list-style-type: none"> <li>Provide reliable and affordable energy infrastructure by extending the national grid network</li> <li>Promote the adoption of energy efficient technologies</li> </ul>
<b>6</b>	<b>Diversifying Tourism (Western Circuit)</b>	The NSP shall promote diversification of tourism by offering diverse products in	<ul style="list-style-type: none"> <li>The Western Circuit in which Vihiga falls shall be planned and developed to offer; ecotourism, ecology/study tourism, sports and cultural tourism,</li> </ul>

		the different tourist circuits	adventure tourism, medical tourism, MICE, agro tourism and cultural and heritage tourism products
		Appropriate Tourism support infrastructure and facilities shall be provided	<ul style="list-style-type: none"> <li>• Formulate planning regulations and standards to guide tourist specific infrastructure and facilities.</li> <li>• Develop the requisite tourism support infrastructure and facilities.</li> <li>• Upgrade the existing tourism facilities and infrastructure.</li> <li>• Adopt low carbon and green tourism infrastructure options.</li> <li>• Increase bed capacity in tourist attraction areas and towns in Vihiga County</li> <li>• Provide and upgrade the ICT infrastructure to support tourism.</li> </ul>
		Tourist attraction areas and sites shall be conserved and protected	<ul style="list-style-type: none"> <li>• Strictly regulate developments within the tourist attraction sites.</li> <li>• Prohibit the location of incompatible land use activities.</li> <li>• Protect wildlife watering points</li> </ul>
		Governance of the tourism sector shall be enhanced.	<ul style="list-style-type: none"> <li>• Prepare integrated spatial plans to guide development of the tourism sector.</li> <li>• Prepare and implement National Policies on land use, wildlife and tourism;</li> <li>• Undertake research to identify more tourist attraction areas and sites, inventorize Agro tourism sites</li> <li>• Enhance tourism dedicated security to the tourism sector.</li> <li>• Identify and map potential eco-tourism development sites;</li> <li>• Undertake awareness campaigns on the value of eco-</li> </ul>

			<p>tourism to the industry players both locally and globally;</p> <ul style="list-style-type: none"> <li>• Develop standards for eco-tourism establishments;</li> <li>• Facilitate access to eco-tourism development incentives</li> </ul>
		Spatial Development plans shall be prepared to guide implementation of the flagship projects for the tourism sector	<ul style="list-style-type: none"> <li>• Prepare local physical development plans to actualize the Premium Parks Initiative</li> <li>• Prepare ecosystem area plans for all parks and reserves in conjunction with respective county governments to address problems of unplanned development of lodges and poor access roads.</li> </ul>
<b>7</b>	<b>Managing Human Settlements</b>	Alternative urban areas shall be developed and supported to promote balanced regional Development and spur growth.	<ul style="list-style-type: none"> <li>• Develop urban centres as intermediate centres between the rural and the principal towns.</li> <li>• Provide principal towns and urban centres with the requisite infrastructure to support their growth and development.</li> <li>• Prepare local physical development plans to define the urban growth limits for the principal urban centres.</li> <li>• Enforce strict regulations and justifications on development control processes.</li> <li>• Intensify the supply of urban infrastructure within the area contained to make it attractive for investment</li> </ul>
		The expected increase in population in urban areas shall be anticipated and accommodated particularly for the main growth areas.	<ul style="list-style-type: none"> <li>• Increase the housing stock by planning and redeveloping existing housing areas.</li> <li>• Formulate enabling local policy frameworks to support employment and income generation</li> </ul>
		Rural growth centres shall be rationalized and supported to act as central places and	<ul style="list-style-type: none"> <li>• Provide basic services such as extension services, health facilities, markets, sanitation, water, power and education to improve the quality of rural life.</li> </ul>

		<p>settlements clustered to free the rich agricultural land</p>	<ul style="list-style-type: none"> <li>• Undertake sensitization and awareness campaigns on the need to conserve agricultural land by discouraging land fragmentation.</li> <li>• Progressively link growth centres by means of secondary roads as a minimum.</li> <li>• Promote sectors such as agriculture that have potential to stimulate rural development</li> <li>• Incorporate disaster management and mitigation in planning of rural settlements.</li> </ul>
		<p>Human settlements shall be developed in line with environmental and natural resources conservation to improve living conditions</p>	<ul style="list-style-type: none"> <li>• Map out and prohibit development in environmental sensitive areas.</li> <li>• Plan and provide an integrated waste management system.</li> <li>• Prepare and implement zoning guidelines to ensure compatibility of land uses in human settlement areas.</li> <li>• Promote social organization and environmental awareness through the participation of local communities in the identification of public service needs.</li> <li>• Strengthen the capacity of the local governing bodies to effectively deal with environmental challenges associated with rapid and sound urban growth.</li> <li>• Empower community groups, nongovernmental organizations and individuals to assume responsibility and authority for managing and enhancing their environment.</li> <li>• Deliberately provide adequate and functional open spaces in urban places.</li> <li>• Prescribe planning standards for open/green space on</li> </ul>

			<p>private development.</p> <ul style="list-style-type: none"> <li>• Encourage non-motorized transport (NMT) and re-introduction of public transport in major cities and urban centres</li> <li>• Aim for zero carbon building standards by 2032 and ensure all buildings meet energy efficiency criteria</li> </ul>
		The NSP advocates for the provision of an efficient, reliable and effective transport system for human settlements	<ul style="list-style-type: none"> <li>• Plan and develop an integrated urban transport system to enhance provision of relevant modal split.</li> <li>• Integrate land use and transportation planning</li> <li>• Improve the road conditions and expand the linkages to human settlements</li> <li>• Integrate NMT with existing transport infrastructure.</li> <li>• Incorporate the concept of green energy in transport systems planning and redevelopment.</li> <li>• Prepare a transportation strategy for each urban area or city, as part of the integrated urban development plan required under the Urban Areas and Cities Act 2011, in collaboration with the National Government.</li> </ul>
		The management and governance of Human Settlements particularly the urban areas shall be improved.	<ul style="list-style-type: none"> <li>• Build institutional capacities of the urban areas management boards</li> <li>• Integrate technology in management of human settlements to strengthen urban data systems.</li> <li>• Coordinate and strengthen development control mechanisms</li> <li>• Provide adequate human resource and improve their capacity in management of human settlements in the sectors of; housing, settlement, land, infrastructure, construction, energy and disaster management</li> <li>• Conduct research into migration trends to inform</li> </ul>

			<p>effective planning and provision of human settlements.</p> <ul style="list-style-type: none"> <li>• Enable public private partnerships in the provision of housing.</li> </ul>
		<p>NSP shall advocate for upgrading of the existing settlements and forestalling of new informal settlements</p>	<ul style="list-style-type: none"> <li>• Encourage redistribution of urban income through integrated development planning encompassing social, economic and physical factors</li> <li>• Prepare Local Physical Development Plans for purpose of renewal and/or redevelopment of the informal settlements.</li> <li>• Formulate a housing policy that will focus on providing affordable and accessible housing.</li> <li>• Ease the process of issuance of ownership documents to the legal owners in order to encourage formal developments</li> <li>• Enforce development control regulations and adherence to building code and standards.</li> <li>• Enhance coordination of donor agencies activities within informal settlements by relevant authorities for optimal returns.</li> </ul>
		<ul style="list-style-type: none"> <li>• Peri-urban development shall be managed and controlled to contain urban growth within its limits and protect rural land uses.</li> </ul>	<ul style="list-style-type: none"> <li>• Formulate policy for urban containment and densification</li> <li>• Formulate and implement planning legislation on peri-urban planning and management</li> <li>• Institute sanctions on idle land to encourage productive and sustainable land utilization.</li> <li>• Create green belt buffer zones to define the urban and peri-urban areas.</li> <li>• Incentivize local farmers to preserve agricultural land by promoting local production and providing ready markets</li> </ul>

			for agricultural produce
<b>8</b>	<b>Integrating the Transportation network</b>	<ul style="list-style-type: none"> <li>An integrated and functional transport system for the national and urban areas shall be developed.</li> </ul>	<ul style="list-style-type: none"> <li>Provide access, expand and linkage, between county headquarters (60M); county headquarters and sub county headquarters (30M); and for local access and link them to national transportation corridors.</li> </ul>
		<ul style="list-style-type: none"> <li>An efficient and affordable Mass Public Transport for all urban areas in the country shall be developed</li> </ul>	<ul style="list-style-type: none"> <li>Integrate land use with urban transport planning for all urban areas.</li> <li>Undertake research on the optimal modal split for various categories of urban centers</li> </ul>
		<ul style="list-style-type: none"> <li>An urban transport policy that facilitates an integrated, balanced and environmentally sound urban transport system in which all modes efficiently play their roles shall be developed</li> </ul>	<ul style="list-style-type: none"> <li>Develop a public transport policy to regulate planning and management of public transport</li> <li>Incorporate an integrated transport network in county, city and urban development plans</li> </ul>
<b>9</b>	<b>Providing Appropriate Infrastructure</b>	<ul style="list-style-type: none"> <li>Safe, adequate, reliable and affordable electricity for both</li> <li>Urban and rural settlements shall be provided.</li> </ul>	<ul style="list-style-type: none"> <li>Increase access to electricity through upgrading and expansion of the national power transmission and distribution network.</li> <li>Tap into solar for large scale production in Vihiga County for sale to the national grid.</li> <li>Mainstream and enforce green energy options in the design of buildings</li> </ul>
		<ul style="list-style-type: none"> <li>Expansion and improvement of water reticulation systems to</li> <li>facilitate the access to clean, safe, adequate, reliable and</li> </ul>	<ul style="list-style-type: none"> <li>Incorporate water provision in all physical development plans</li> <li>Construct and rehabilitate water supply systems in the ASAL counties</li> <li>Restore all the water towers.</li> </ul>

		<p>affordable</p> <ul style="list-style-type: none"> <li>• water in human settlements shall be promoted</li> </ul>	
		<ul style="list-style-type: none"> <li>• A network of functional, efficient, safe, accessible and sustainable county health referral infrastructure shall be established.</li> </ul>	<ul style="list-style-type: none"> <li>• Develop the service provider’s capacity to offer services and appropriately refer at each level of the healthcare system;</li> <li>• Improve the system’s ability to transfer clients and specimens between the different levels of the health care system;</li> </ul>
		<ul style="list-style-type: none"> <li>• Appropriate, quality, efficient and cost-effective ICT infrastructure in both rural and urban areas shall be promoted</li> </ul>	<ul style="list-style-type: none"> <li>• Develop and upgrade ICT Infrastructure in the county</li> <li>• Extend ICT infrastructure to cover all the rural and local growth centres.</li> <li>• Mainstream use of ICT in all levels of government and the private sector (e-government).</li> </ul>
		<ul style="list-style-type: none"> <li>• The expansion of sewerage systems and waste management facilities shall be promoted to improve sanitation in human settlements</li> </ul>	<ul style="list-style-type: none"> <li>• Develop the service provider’s capacity to offer services and appropriately refer at each level of the healthcare system;</li> <li>• Improve the system’s ability to transfer clients and specimens between the different levels of the health care system;</li> </ul>
		<ul style="list-style-type: none"> <li>• Sporting infrastructure shall be planned, developed, maintained and the existing rehabilitated to promote sports development.</li> </ul>	<ul style="list-style-type: none"> <li>• Establish County Sports Talent Centers to act as feeds to the international centre to scout, nurture and develop sports talents at the sub-national levels.</li> <li>• Rehabilitate all the 47 county stadia to international standards</li> </ul>

**Source:** State Department for Physical Planning, 2022



Map 3 provides a spatial representation of the policies proposed for Vihiga County.

Map 3: NSP Proposals for Vihiga County



Source: State Department for Physical Planning, 2022

## **5 IMPLEMENTATION AND ADOPTION OF THE GUIDELINES**

### **5.1 Overview**

The implementation framework identifies activities and further ties them with responsible actors, resources and timeframes adequate for their execution. It constitutes a deliberately established method, means or system of ensuring that the policies, strategies and measures outlined in the guidelines are continuously and consistently executed to achieve their objectives.

To effectively implement the guidelines, the various sectors, actors and levels of planning have been identified and have to work together and the mandate of the sectors at the National and County levels of planning have to be integrated.

### **5.2 Implementation Approaches**

The County Specific Guidelines will be implemented through various approaches including:

1. Preparation of spatial plans to integrate and conform to the proposals of the County Guidelines. The plans include:
  - Inter-County Physical and Land Use Development Plans for Metropolitan regions, conservation zones, river basins, water towers, coastal ecosystems, trans-boundary resource areas and transport corridors, among others.
  - County Physical and Land Use Development Plans.
  - Local Physical and Land Use Development plans for Cities, Urban areas, special area plans, subject plans and detailed neighbourhood plans, among others.
  - Sectoral plans
2. Integration of the guideline policies, strategies and measures into the County sector plans, programs and projects. Ministries, Departments and Agencies (MDAs), County and National Departments identified in the plan to administer the policies, strategies and measures are required to translate them into action plans, programmes and projects and to include them in their subsequent sector plans.
3. Formulation of policies, regulations and standards to guide development control

### **5.3 Implementation Framework**

The implementation of the various policies, strategies, measures, programmes and projects under these Guidelines will involve a wide range of actors. It will require a coordinated approach and partnership between the National and County Governments and non-state actors. It may require re-engineering of institutions and a number of actors to undertake the implementation through a harmonized approach.

The National Spatial Plan identified a multi-leveled framework for implementation of the plan that incorporates all levels of actors. In this regard, the institutions identified in the NSP to undertake implementation of the plan at County-level shall also be mandated to ensure implementation of this Guidelines.

The following are the Institutions mandated to ensure implementation of the County Specific guidelines;

#### **5.3.1 County Physical Planning Committee**

The role of the County Planning Committee shall be to ensure aspirations of the guidelines are articulated in preparation of the County Spatial Plans, County Integrated Development Plans and Local Physical and Land Use Development Plans.

The composition of this committee consists of;

- i. The Governor who will be the Chairperson,
- ii. the Deputy Governor,
- iii. the County Executive Committee Members from various sectors
- iv. Directors from various relevant County Departments including Lands and Physical Planning, Economic planning, Agriculture, Industrialization, Tourism, Environment, Transport and Infrastructure

The functions of the committee include;

- 1) To promote effective integration between physical, economic and sectoral planning within the framework of county development policies.
- 2) To provide policy guidance for the implementation of strategic spatial projects

- 3) To ensure that the guidelines policies and measures are mainstreamed in the various county plans.
- 4) To mobilize resource for implementation of the Guidelines.

### **5.3.2 County Planning Unit (CPU)**

The technical Unit shall provide technical support to the various implementing County departments on issues relating to physical planning.

The CPU shall;

- i. Monitor the Implementation of the guidelines.
- ii. To disseminate components of the guidelines to the various county departments.
- iii. Update the County Physical Planning Committee on a regular basis on the implementation of the guidelines.

The County Director of Physical Planning shall be responsible for preparation of an annual state of planning report which shall among other things appraise the status of implementation of the guidelines.

### **5.3.3 National Land Commission**

The National Land Commission shall play its oversight role in land use planning to ensure efficient implementation of the NSP and the guidelines. Other functions of the Commission in the implementation of the NSP and the guidelines include the following: - To formulate mechanisms and parameters for monitoring and overseeing land use planning.

- i. To ensure that relevant planning authorities carry out their functions as required by law.
- ii. To make recommendations for improvements of the planning systems in the county.
- iii. To mobilize resources to support physical/land use planning.

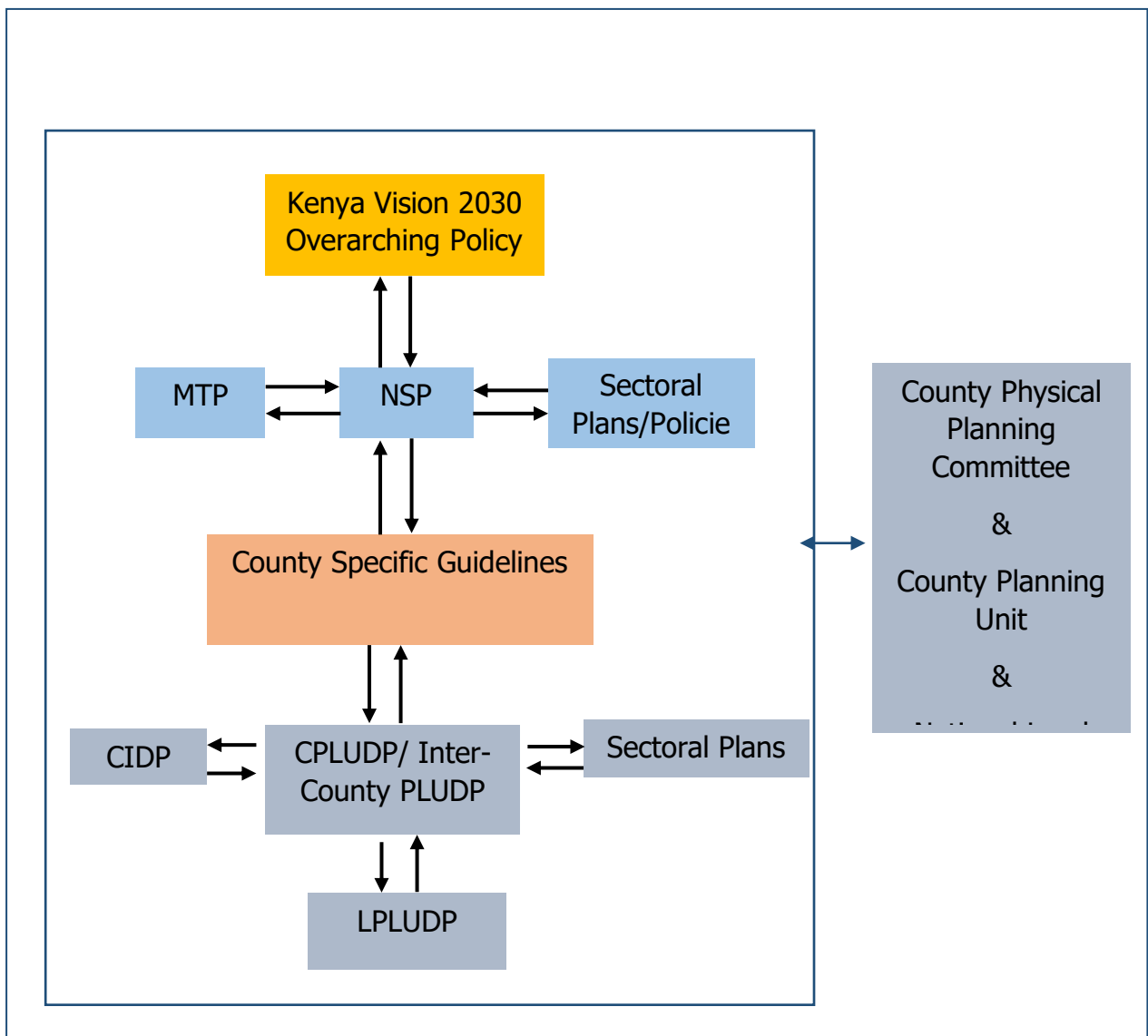
## **5.4 Monitoring and Evaluation**

Implementation of the guidelines will be monitored and evaluated to measure both outputs and outcomes and ensure that the intended actions are implemented in a timely manner. To facilitate attainment of the objectives of the guidelines,

performance indicators will be developed by the County Physical Planning Department for efficient monitoring. Periodic reports will be prepared in relation to progress being made in their implementation.

The graphic below illustrates the implementation structure for County Specific guidelines.

**Figure 4: Implementation structure of the guidelines**



**Source: State Department for Physical Planning, 2022**

## **5.5 Conclusion**

The application of these guidelines will be undertaken by a number of actors and hence the need for a coordinated approach. The lead agency will be Bomet County Government which will be responsible for implementing various county specific initiatives proposed by the guidelines.

The National Government, County Government of Bomet, the private sector and the general public will be critical in actualizing the objectives of these guidelines. The County Physical Planning Committee shall develop a communication strategy to enhance the synergies.

The National Department of Physical Planning shall undertake sensitization, training and capacity building of the County Government and National Government institutions and agencies that will be involved in the implementation of these guidelines. Special attention will be given to the County physical planning units, as they will be expected to provide technical expertise in the implementation of the County specific policies and strategies.