



Wajir County Government



NATIONAL SPATIAL PLAN IMPLEMENTATION GUIDELINES FOR WAJIR COUNTY

**Optimal Productivity, Sustainability, Efficiency and Equity in the use of our
Land and Territorial Space**



**MINISTRY OF LANDS AND PHYSICAL PLANNING
STATE DEPARTMENT FOR PHYSICAL PLANNING**

© 2022

FOREWORD

The Constitution of Kenya apportions responsibility of planning to both National and County Governments. Under the Fourth Schedule on distribution of functions, Part 1 (21) and (32) mandates the National Government with the responsibility of formulating general principles of land planning, co-ordination of planning by the Counties, capacity building and technical assistance to the Counties. On the other hand, Part 2(8) allocates the function of County planning and development to County Governments. It is under these provisions that the County specific guidelines have been prepared.

The Department of Physical Planning prepared the National Spatial Plan (NSP) in response to the Kenya Vision 2030 to guide the spatial development of the country over a period of 30 years beginning in 2015.

It aims at achieving an organized, integrated, sustainable and balanced development of the country by providing a framework for better national organization and linkages between different activities within the national space.

To implement the Plan, the Counties are expected to play a key role by mainstreaming strategies, policies, and measures identified in the NSP into the County spatial planning systems.

The guidelines have identified planning policies, strategies, and measures that Plans at the County level are expected to mainstream and propagate. The policies address among others, the protection of rich agricultural land, development imbalances, conservation of environmentally sensitive areas, urban containment, and promotion of industrial development.

The guidelines provide direction on the existing potentials, the opportunities, the constraints/challenges inhibiting harnessing of the potentials, the strategies to apply, respective policies required, and the necessary measures to achieve optimal productivity, sustainability, efficiency and equity in the use of county land resources.

The guidelines are an opportunity on how best to refocus, vary and complement areas that require different approaches responding to country-specific needs and promote the livelihoods of their people, while contributing to the national aspirations of vision

2030, regional objectives of the Africa Agenda 2063, and international targets of sustainable development. The refocusing will also be handy in reviewing and making decisions on NSP which is due for review in 2025.

These guidelines are therefore a tool for enhancing this critical path and provide a direction for development planning by the Counties as they discharge their responsibility of preparing county and local physical and land use development plans. The guidelines will also ensure that the County Integrated Development Plans conform to the proposed County specific policy guidelines and measures.

DRAFT

PREFACE

The National Spatial Plan (NSP) recognizes that Kenya is greatly endowed with massive and diverse resources distributed over the national space that require an integrated and coordinated approach for optimal productivity and sustainability.

The County Specific Guidelines have been derived from the National Spatial Plan and provide a planning framework for the integration of the NSP into the county spatial planning system. They are clear statements linking the National Spatial Plan to Inter-County, County and lower-level Physical and Land Use Development Plans and provide clarification on the anticipated sustainable development outcomes of implementing the Plan.

The County Government will adopt, develop and implement their plans based on the policies, strategies, and measures articulated in the guidelines. The realized county plans are expected to guide, harmonize and facilitate development within the county, hence contributing to the overall implementation of the NSP.

The guidelines also form an efficient compass and monitoring tool for National and County Governments to jointly pursue sustainable planning and appropriate implementation mechanisms.

For the county to be nationally competitive, there is need to balance development and promote optimal utilization of land and land-based resources as well as cultivate an integrated approach in addressing the intertwined challenges of regional imbalances/inequalities, rural development, underutilization of the available resources, uncontrolled urbanization, environmental degradation and inefficient transportation. It is imperative therefore, to prioritize the implementation of this strategic document so as to promote balanced development and competitiveness across the County.

EXECUTIVE SUMMARY

The County Specific Guidelines seek to facilitate the implementation of the National Spatial Plan by outlining policies, strategies and measures to guide County spatial planning and development and promote optimal productivity, sustainability, efficiency and equity in the use of land. They provide a framework for preparation of lower level Plans including Inter-County, County and Local Physical and Land Use Development Plans.

The disconnect between National and County Spatial Planning and development has resulted in uncoordinated and unbalanced development, therefore creating a need for a clear structure that links National, Regional and Local planning and development. This is achievable through integration of the policies, strategies and measures proposed by the guidelines into County Spatial Plans, Programs and Projects, to tackle challenges of unbalanced regional development, urbanization, national competitiveness and unsustainable use of land and natural resources.

The County Specific Guidelines are organized into five chapters detailing various facets. Chapter one provides an overview, purpose and justification of preparation of the guidelines. It also outlines the objectives that the guidelines intend to achieve and details the preparation process as well as intended users. This chapter highlights the key principles that form the basis for preparation of lower level plans including public participation, liveability, sustainable development, urban containment, smart urban growth among others.

Chapter two details the legal and policy provisions that the guidelines are anchored upon. They include, among others, The Constitution of Kenya, 2010, The Physical and Land Use Planning Act No.13 of 2019, County Government Act, 2012, Environmental Management and Coordination (Amendment) Act, 2015, Sessional Paper No. 01 of 2017 on National Land Use Policy and Sessional Paper No. 10 of 2012 on Kenya Vision 2030.

The third chapter analyses the county profile, detailing its location, size, bio-physical characteristics, socioeconomic status and the County's comparative advantage in relation to others. The locational context provides information on the geographical

position and bordering Counties while the biophysical context discusses the topography, hydrology and climate. The socioeconomic status indicates key economic drivers of the County and its population and demographic structure.

Chapter four presents the County specific issues and proposes development strategies to promote national competitiveness, optimal use of land and resources, rural development, balanced intra-county development and urbanization.

Additionally, it provides policy guidelines and measures for County advancement.

The final chapter five focuses on implementation and adoption of the guidelines. The implementation framework identifies institutions, County development programs and projects, and further ties them with responsible actors, resources and timeframes for effective execution. It proposes a framework for ensuring that the outlined policies, strategies and measures are adequately implemented.

DRAFT

Table of Contents

| | |
|--|-----|
| FOREWORD..... | i |
| PREFACE | iii |
| 1 INTRODUCTION..... | 1 |
| 1.1 Background..... | 1 |
| 1.2 Purpose | 1 |
| 1.3 Objectives..... | 2 |
| 1.4 Scope | 2 |
| 1.5 Justification | 3 |
| 1.6 Application of the Guidelines..... | 3 |
| 1.7 Process of Preparing the Guidelines..... | 4 |
| 1.8 Targeted Users of the Guidelines..... | 4 |
| 1.9 Key Principles..... | 6 |
| 2 THE POLICY, LEGAL AND PLANNING FRAMEWORK FOR THE GUIDELINES..... | 8 |
| 2.1 Constitutional Context | 8 |
| 2.2 Policy Context..... | 8 |
| 2.2.1 Sessional Paper No. 10 of 2012 on Kenya Vision 2030..... | 8 |
| 2.2.2 Sessional Paper No. 1 of 2017 On National Land Use Policy | 8 |
| 2.3 Legal Context..... | 9 |
| 2.3.1 The Physical and Land Use Planning Act, 2019..... | 9 |
| 2.3.2 County Governments Act, 2012 | 9 |
| 2.3.3 Urban Areas and Cities (Amendment) Act, 2019..... | 9 |
| 2.3.4 Environmental Management and Coordination (Amendment) Act, 2015..... | 9 |
| 2.3.5 National Land Commission Act, 2012..... | 10 |
| 2.4 Planning Context..... | 10 |
| 2.4.1 National Spatial Plan (NSP) | 10 |
| 2.4.2 NSP linkage to other plans | 11 |
| 3 COUNTY PROFILE..... | 13 |
| 3.1 Overview..... | 13 |
| 3.2 Location Context..... | 13 |
| 3.3 Bio-Physical Context..... | 15 |
| 3.3.1 Physical and Topographic Features | 15 |
| 3.3.2 Climatic Condition..... | 15 |
| 3.3.3 Vegetation and Wildlife | 16 |

| | | |
|-------|--|----|
| 3.4 | Socio-Economic Background | 16 |
| 3.4.1 | Population and Demography | 16 |
| 3.4.2 | Economy | 16 |
| 3.4.3 | Water..... | 17 |
| 3.4.4 | Industry | 17 |
| 3.5 | County’s Comparative Advantage | 19 |
| 4 | DEVELOPMENT STRATEGIES AND POLICY GUIDELINES FOR WAJIR COUNTY | 21 |
| 4.1 | County Specific Issues and Development Strategies..... | 21 |
| 4.2 | National Spatial Plan Policy Guidelines and Measures for Wajir County..... | 35 |
| 5 | IMPLEMENTATION AND ADOPTION OF THE GUIDELINES..... | 53 |
| 5.1 | Overview..... | 53 |
| 5.2 | Implementation Channels | 53 |
| 5.3 | Implementation Framework | 54 |
| 5.3.1 | County Physical Planning Committee..... | 54 |
| 5.3.2 | County Planning Unit (CPU)..... | 55 |
| 5.3.3 | National Land Commission | 55 |
| 5.4 | Monitoring and Evaluation | 55 |
| 5.5 | Conclusion..... | 57 |

DRAFT

List of Tables

| | |
|--|----|
| Table 1: Targeted Users of the Guidelines | 5 |
| Table 2: Wajir County Population Projection..... | 16 |
| Table 3: Wajir County Specific Issues and Development Strategies | 21 |
| Table 4: NSP Policy Guidelines for Wajir County | 35 |

List of Figures

| | |
|---|----|
| Figure 1: The Scope of the Guidelines | 3 |
| Figure 2: Policy Focus of the NSP | 11 |
| Figure 3: National Spatial Plan Linkage to other Plans..... | 12 |
| Figure 4: NSP Implementation Organizational Structure..... | 56 |

List of Maps

| | |
|--|----|
| Map 1: Location of Wajir County..... | 14 |
| Map 2: The Existing Situation in Wajir County..... | 18 |
| Map 3: NSP Proposal for Wajir County..... | 52 |

DRAFT

1 INTRODUCTION

1.1 Background

The County Guidelines set out policies, strategies and measures that will guide the long-term spatial development of the county for a period of 30 years. They cover the entire county and defines the general trend and direction of its spatial development.

The guidelines have been developed in line with the four thematic areas as outlined in the NSP. They provide a guide to the Planning Authority at the county on how to incorporate the NSP policies, strategies and measures during the preparation of County Spatial Plans and other lower-level plans like the Local Physical and Land Use Development Plans consequently implementing the NSP.

The NSP County Specific implementation guidelines summarize the County's existing potentials and opportunities, the constraints (challenges) inhibiting harnessing of the potentials, the applicable strategies and respective policies required, and the necessary measures to achieve optimal productivity, sustainability, efficiency and equity in the use of the county land resources. They act as a reference point.

1.2 Purpose

The purpose of the County Specific Guidelines is to provide a planning framework for mainstreaming of the National Spatial Plan to the County spatial planning system.

The guidelines are intended to assist the County enhance the implementation of the NSP by linking the proposed county specific policies, strategies and measures into the County plans, programs and projects while putting measures in place for achieving them. The guidelines inform preparation of various County Physical Plans such as the County Physical and Land Use Development Plans.

For optimal implementation of these plans, a County Integrated Development Plan (CIDP) is essential since it is a sectoral and budgetary based plan that draws its implementation programs and projects from the County Physical Plans.

The Guidelines will form an efficient compass and monitoring tool for national and county governments to pursue sustainable planning and appropriate implementation mechanisms.

1.3 Objectives

The guidelines provide policies and strategies to deal with challenges of regional imbalances/inequalities, rural development, underutilization of the available resources, urbanization, environmental degradation and inefficient transportation.

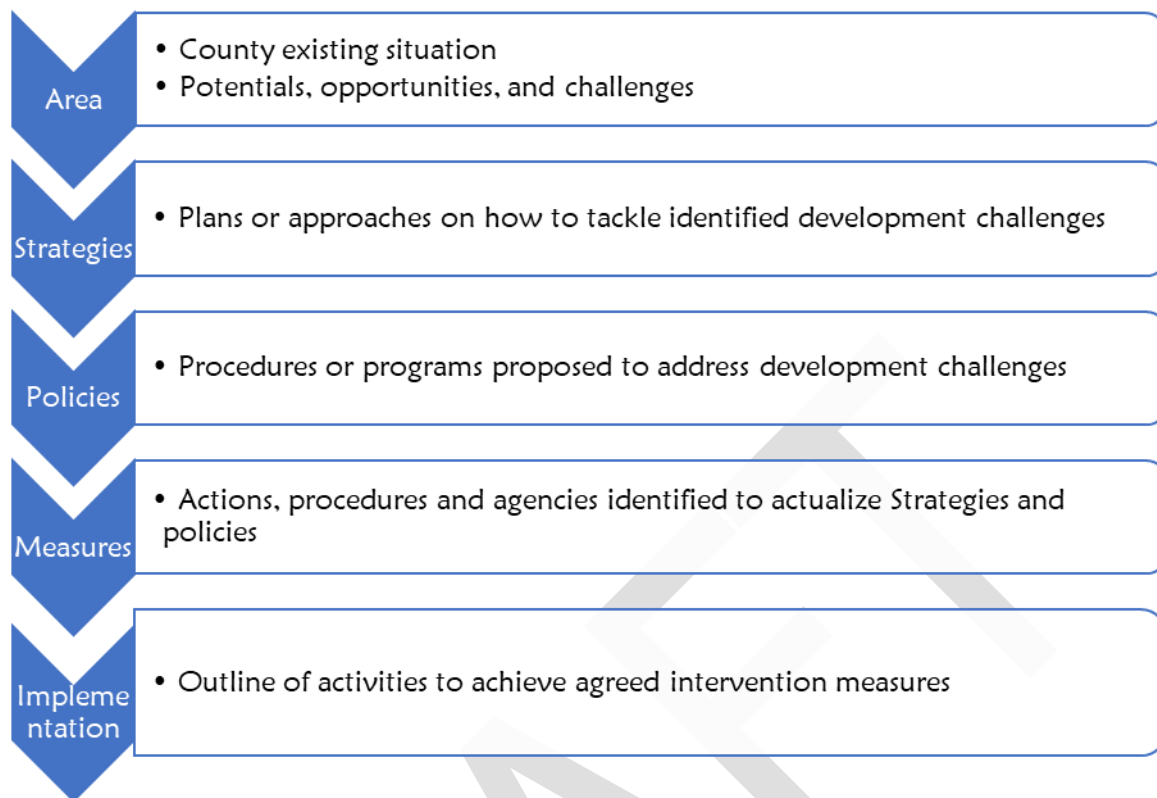
Specific objectives include;

1. To sensitize the County on the provisions of the NSP
2. To promote synergy between National and County planning
3. To guide the County, implement the NSP
4. To clarify the roles of the different actors in the implementation of the NSP.

1.4 Scope

The guidelines and strategies are specific to Wajir County and cover the entire territory of the County measuring approximately 56,685.9 Km². The guidelines highlight key facets including the identified issues, the actions, approaches, plans and procedures prescribed to address the issues, and an outline of activities to execute the agreed interventions as captured in the National Spatial Plan, which is as indicated in Figure 1 below. The guidelines shall be operational until the year 2045.

Figure 1: The Scope of the Guidelines



Source: State Department for Physical Planning, 2022

1.5 Justification

Preparation of County Physical and Land Use Plans which is a mandate of counties has been slow and, in some counties, have not begun at all. These guidelines are therefore a quick reference on how Wajir County can optimize land even in the absence of this plans.

Implementation of NSP since its approval and launch has been undertaken in an uncoordinated manner hence the guidelines will provide standardized approach for all counties.

The guidelines are a tool for implementation of the NSP, and a basis for preparation of a monitoring and evaluating framework to track NSP implementation both at national and county levels.

1.6 Application of the Guidelines

The guidelines and strategies will be used or applied in the following ways to achieve a more sustained and coordinated development of the County;

- To effectively coordinate planning between the National and the County Government;
- To improve County Government capacity to formulate, coordinate and implement integrated development policies and programmes to address spatially unbalanced development;
- To inform strategic infrastructure policy and public investment decisions which support the achievement of balanced development in the County;
- To strengthen County inter-sectoral coordination within a spatial framework and provide the private sector with a clear context in which they can make investment decisions;
- To optimize the use of land and natural resources by providing a framework for making sustainable locational choices for sustainable development and conservation of land productivity in the County.

1.7 Process of Preparing the Guidelines

The process involved reviewing the National Spatial Plan and identifying key issues, spatial policies, development strategies and measures specific to Wajir County. These key issues, spatial policies, development strategies and measures will be realized through preparation of County and other lower-level plans.

Research was undertaken on various thematic areas to enrich the County specific issues and development strategies as well as policy guidelines and measures/ interventions. Further, preparation of the guidelines considered the constitutional, policy and legal provisions on physical and land use planning. Expert opinion was sought on the identified issues, policies, measures and strategies for implementation viability.

The preparation of the guidelines was identified as one of the implementation tools of the NSP, in which key NSP issues, policies, strategies and measures were translated into specific action plans, programs and projects at the County level.

1.8 Targeted Users of the Guidelines

Table 1 below indicates, among others, the targeted users of the guidelines and the respective application;

Table 1: Targeted Users of the Guidelines

| User | Application |
|---|---|
| County Executive Committee Member in charge of Physical and Land Use Planning | <ul style="list-style-type: none"> • Preparation of County and lower-level plans • Linkage of planning structures • Quality control of the various County plans • Formulate County planning policies and strategies • Establish County planning institutions • Coordinate and implement County plans and policies |
| The County Director of Physical and Land use planning | <ul style="list-style-type: none"> • Advising the County government on the impact of the County specific guidelines to the County • Preparation of County physical and land use development plans and other lower-level plans • Formulating County physical and land use planning policies, guidelines, strategies, and standards; • Issuance of development permission and other development control instruments under The Physical and Land Use Planning Act, 2019. |
| Licensed physical and land use planners both in public and private sectors | <ul style="list-style-type: none"> • Prepare, coordinate and implement Physical and Land Use Plans • Quality control of plans and consultancy services • Formulate policies, strategies and development guidelines • Dispute resolution |
| County assembly | <ul style="list-style-type: none"> • Approval of planning budgets • Vetting of various County plans • Formulation and passing of County planning legislation • Enhance capacity to oversee the executive on spatial planning |
| Ministries, Departments And Agencies (MDAs) | <ul style="list-style-type: none"> • Mainstreaming relevant NSP policies, programs and projects • Allocation of resources to priority areas, • Strengthening linkages with spatial planning in resource management |
| The National Land Commission (NLC) | <ul style="list-style-type: none"> • Oversight role in Land Use planning to ensure efficient implementation of the NSP • Ensure relevant planning authorities carry out their functions as required by law |
| Practitioners in the built environment | <ul style="list-style-type: none"> • Advance of relevant policies, strategies, standards, guidelines, programmes, and projects • Apply processes, procedures and linkages of the NSP in their respective areas of practice |
| Community, developers and investors | <ul style="list-style-type: none"> • Comprehend the processes, procedures and requirements of various County Plans and policies • Linkages of spatial planning and implementation • Making informed investment decisions |

| | |
|-----------------------|---|
| Development partners | <ul style="list-style-type: none"> • Reference frame for funding spatial planning activities • Understand planning linkages and implementation • Making informed development decisions |
| Training institutions | <ul style="list-style-type: none"> • Compliment the curriculum for training of spatial planners • Understand the planning procedures and processes |

1.9 Key Principles

The guidelines were prepared based on the outlined principles as applied in the NSP. The principles should guide sustainable, coordinated and realistic development, and form the basis upon which the lower-level Physical and Land Use Plans shall be prepared. The principles are;

- 1. Effective Public participation/engagement:** All plans shall be prepared in a participatory and consultative manner with relevant stakeholders and sectoral actors.
- 2. Urban containment/Compact cities:** Local plans shall strive to limit and control urban growth within the set urban boundaries to protect rich agricultural land, mitigate urban sprawl and reduce cost of infrastructural provision.
- 3. Livability:** The planning of urban areas shall enhance the livability index in the area of housing, environment, transportation, health, and social engagement. The urban areas must be economically viable, socially inclusive and ecologically sustainable.
- 4. Smart and green urban growth:** Plans shall promote sustainable use of energy, creation of green spaces, reduce the need for car travel, and promote use of local materials, support businesses, protection of heritage and creation of unique character.
- 5. Sustainable development:** Balancing social, economic and environmental dimensions of development and catering for current and future generations.
- 6. Promotion of ecological integrity:** Plans shall promote the protection and conservation of environmentally sensitive areas.
- 7. Promote public transportation:** Favor public transportation over private transport to ensure efficiency and functionality of urban places.

8. Balanced development: Plans to ensure there/ is balanced development in the County to cure inequalities.

DRAFT

2 THE POLICY, LEGAL AND PLANNING FRAMEWORK FOR THE GUIDELINES

2.1 Constitutional Context

The formulation of these guidelines took into account the Constitution of Kenya 2010 aspirations and Principles. Article 66 of the Constitution of Kenya 2010 gives the State powers to regulate use of any land and property in the interest of land use planning among others. The Fourth Schedule of the Constitution assigns the National Government the role of capacity building and technical assistance to the Counties. The guidelines are therefore within and in response to the aspirations, values and principles as provided for in the constitution.

2.2 Policy Context

2.2.1 Sessional Paper No. 10 of 2012 on Kenya Vision 2030

Kenya Vision 2030 is the overarching national development framework which all plans should be aligned to. The preparation of all Physical and Land Use Plans should take cognizance of the aspirations, foundations and development concepts of the vision. The preparation of the first National Spatial Plan is identified in Kenya Vision 2030 as a flagship project and is regarded as one of the foundations for socio-economic transformation. Hence the need for linkage between national planning and county planning which can be achieved through mainstreaming NSPs into CSPs and other lower-level plans by preparing NSP county specific guidelines to implement the NSP at lower levels.

2.2.2 Sessional Paper No. 1 of 2017 On National Land Use Policy

The Policy was formulated to address the various challenges related to land use and ensure efficient, productive and sustainable use of land. The main goal of the policy is to provide legal, administrative, institutional and technological framework for optimal utilization and productivity of land related resources in a sustainable and desirable manner at National, County and community levels.

The policy recommends the preparation of a National Spatial Plan to provide an integrated framework for the development of the country including guidelines for sustainable rural and urban planning management. The policy also provides for the

preparation of planning guidelines, policies and standards to be observed by County Governments and other sectoral agencies within the frameworks of approved physical and land use development plans. These guidelines have been prepared on this basis and they are to be observed by counties in the implementation of the National Spatial Plan.

2.3 Legal Context

Several Acts of Parliament are in place to provide the legal framework for the implementation of the mandate provided for in Article 66 of the Constitution. The Physical and Land Use Planning Act, 2019, The Urban Areas and Cities (Amendment) Act, 2019, County Governments Act No. 17 of 2012, The Land Act No. 06 of 2012, National Land Commission Act No. 05 of 2012 among others. The NSP County specific guidelines are prepared in this context and meet this criterion. They include;

2.3.1 The Physical and Land Use Planning Act, 2019

This is the overarching statute that provides for formulation of both national and county physical and land use planning policies, guidelines and standards. The Act further provides for administration, types, content, process and approval of the various types of Physical and Land Use Development Plans.

2.3.2 County Governments Act, 2012

This statute mandates County Governments to carry out the planning function at the County level. The guidelines enhance the capacity to prepare the various county level plans that meet the recommended quality and standards.

2.3.3 Urban Areas and Cities (Amendment) Act, 2019

The statute provides for classification of urban areas and cities, their governance and management, and for integrated development planning. The guidelines are a basis for preparation of these lower-level plans.

2.3.4 Environmental Management and Coordination (Amendment) Act, 2015

The Act provides for the establishment of an appropriate legal and institutional framework for the management of the environment as well as guidelines relating to

environmental management and prevention or abatement of environmental degradation. The guidelines take cognizance of this Act and will be implemented within the framework.

2.3.5 National Land Commission Act, 2012

The Act mandates the National Land Commission with the management and administration of public land on behalf of the National and County Government, and the monitoring and oversight of physical and land use planning in the country. The guidelines fall within the ambit of this statute and will facilitate their oversight responsibilities.

2.4 Planning Context

2.4.1 National Spatial Plan (NSP)

The National Spatial Plan (NSP) covers the whole country encompassing the forty-seven (47) counties and the Exclusive Economic Zone. The NSP outlines policies and strategies geared towards influencing desired future distribution and organization of population and activities outlined in Vision 2030 and sectoral policies and plans. It aims at achieving economic efficiency and balanced development. The various County Physical and Land Use Plans should be aligned to the policies outlined in the NSP as demonstrated in Figure 2 below.

Figure 2: Policy Focus of the NSP



Source: National Spatial Plan, 2015-2045

To actualize the NSP a comprehensive implementation strategy has been proposed that embraces a multiplicity of actors including National Government Ministries, Departments and Agencies, County Governments and the National Land Commission. The strategy proposes the establishment of the following institutions as key in the implementation of the Plan; The National Physical Planning Council, the National Technical Committee and the County Physical Planning Committee.

2.4.2 NSP linkage to other plans

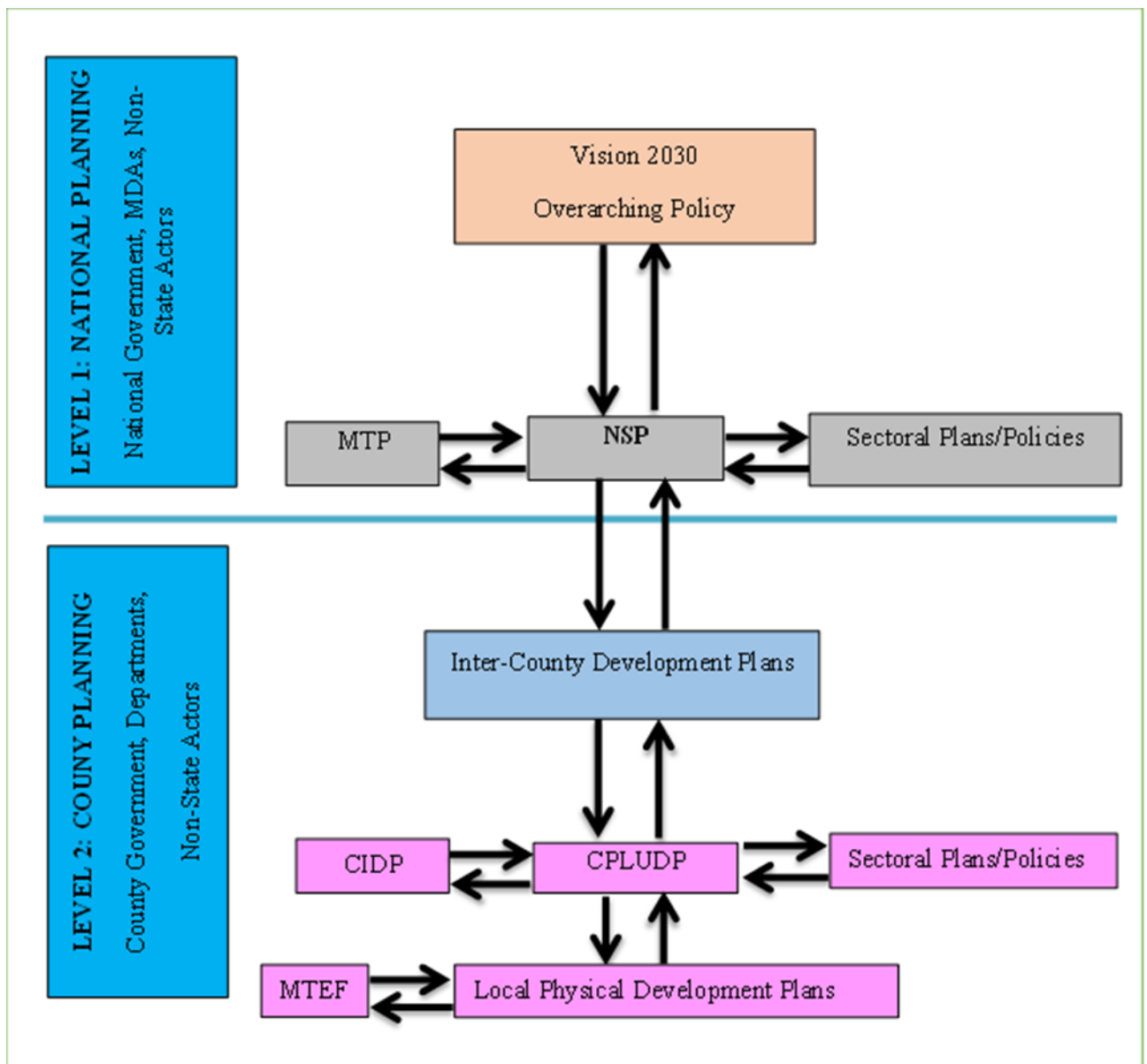
The linkage of the National Spatial Plan (NSP) to county and other lower-level plans is key to realization of its aspirations and the successful actualization of these plans. The NSP provides a spatial framework to ground the Vision 2030 flagships projects and form a basis for coordination of County policies, strategies, measures and plans.

Inter County and County plans take into considerations the policies, measures and strategies of the NSP and implements them actualizing its aspirations.

County Physical and Land Use Development Plans provide a framework where the CIDP draws its programs and projects. The implementation of the CIDP in turn leads to realization of the objectives of the County Physical and Land Use Development Plan.

Figure 3 below illustrates the country's planning linkage.

Figure 3: National Spatial Plan Linkage to other Plans



Source: The National Spatial Plan 2015-2045

3 COUNTY PROFILE

3.1 Overview

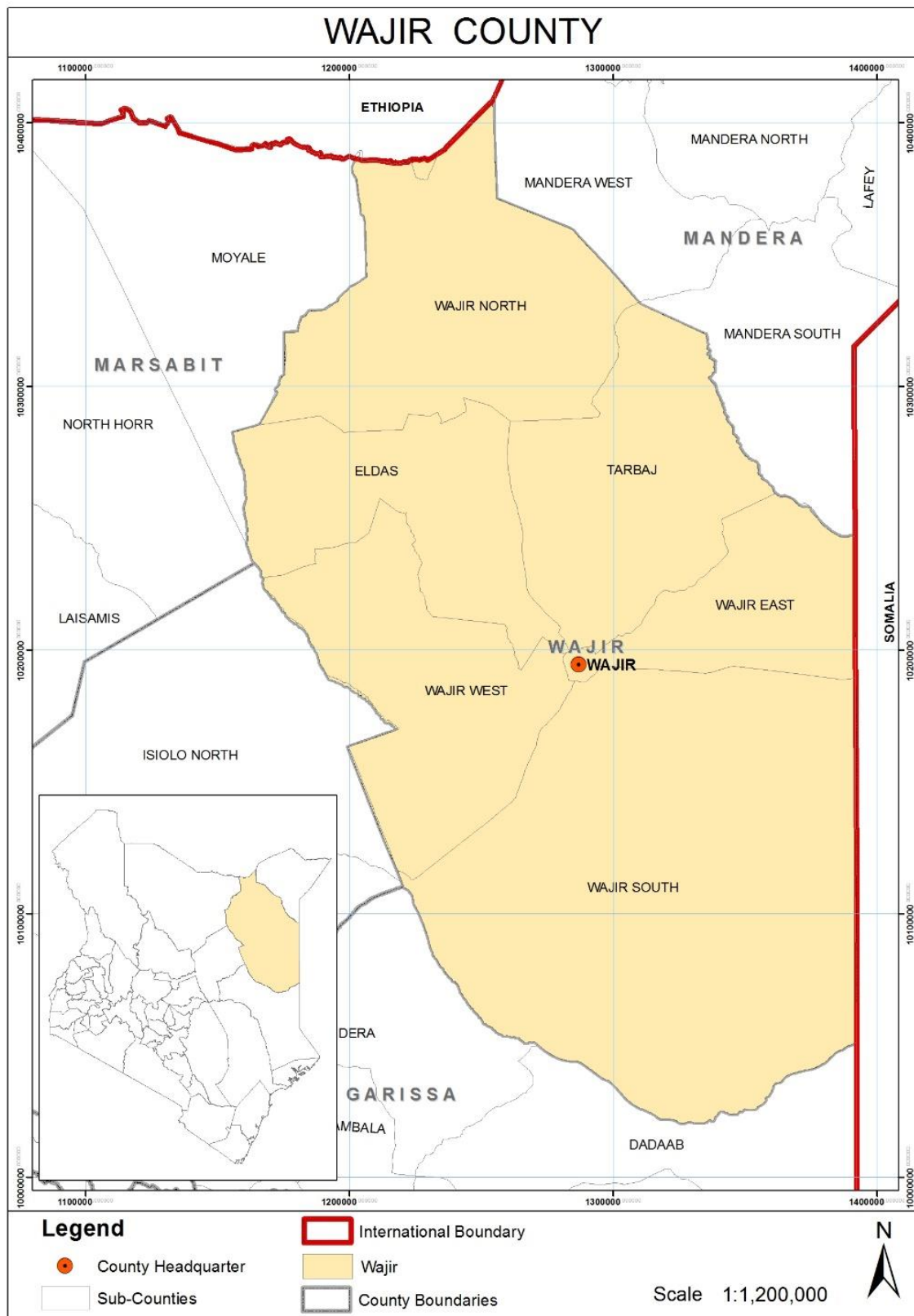
This chapter presents the locational, bio-physical and socio-economic perspectives and trends of the County. These perspectives informed the preparation of the strategies, policies and measures that form the National Spatial Plan County-Specific Guidelines for Wajir County.

3.2 Location Context

The County is located in the North Western part of the country and covers an area of 56,685.9 Km². The County lies between latitudes 3° N 60N and 0° 20N and Longitudes 39° E and 41°E. It borders Somalia to the East, Ethiopia to the North, Mandera County to the Northeast, Isiolo County to the South West, Marsabit County to the West and Garissa County to the South. Map 1 below illustrates the position of Wajir County within the Country.

DRAFT

Map 1: Location of Wajir County



Source: State Department of Physical Planning, 2022

3.3 Bio-Physical Context

This section provides information on the main physical and ecological characteristics, and other background information critical to the overall development strategy of the County.

3.3.1 Physical and Topographic Features

Wajir County is a featureless plain and lies between 150 meters and 460 meters above sea level and along latitude 1°45'N and longitude 40°4'E. The plain rises gently from the south and east towards the north rising to 200 meters at Buna and 460 meters at Bute and Gurar at the foothills of Ethiopian highlands.

The highly seasonal Ewaso Nyiro River and Lake Yahud are located within the County. The County has seasonal swamps which together with drainage lines serve as grazing zones during dry season and for cultivation during the rainy seasons. However, the County is prone to seasonal flooding during the rainy seasons which the wetlands, if well managed, offer an opportunity for flood risk management and irrigation agriculture.

The County is generally covered with young sedimentary rocks with loamy soils in the north bordering the Ethiopian highlands and has considerable deposits of Limestone and sand.

3.3.2 Climatic Condition

Wajir County is a semi-arid area falling in the ecological zone V-VI. The County receives an average of 240 mm of rainfall per year. The rainfall is usually erratic and short making it unfavorable for vegetation growth. Crop activity is carried out in the Lorian swamp and along the drainage lines in Bute.

Wajir County experiences annual average relative humidity of 61.8 per cent. The average temperature is 27.9 °C and the range of average monthly temperatures is 3.5 °C. The warmest months are February & March with an average of 36°C while the coolest months are June, July, August & September with an average low of 21 °C.

The County experiences frequent drought which impacts negatively on livestock, crop farming, education, nutrition, access to water and pasture. The frequency and

intensity of the extreme climatic events, attributed to climate change, is continually increasing and disrupting the livelihood of the communities.

3.3.3 Vegetation and Wildlife

The County has rich culture, wildlife and landscape features that include Lake Yahud among others. There are no protected and conservation areas in the County, thus KWS ensures safety and protection of the wildlife in their current habitation. Other potential tourist attraction features include Wajir museum, Wagalla massacre site, Orahey wells, British & Italian war bunkers and old court house.

3.4 Socio-Economic Background

This section presents the population, demographic and socio-economic outlay of Wajir County.

3.4.1 Population and Demography

The County had a total population of 781,214 in 2019, and an inter-censal growth rate of 3.22 percent (Kenya National Bureau of Statistics, 2019). The population is projected to increase to 1,107,065 in 2030 and 1,780,866 by 2045. Table 2 below shows the projected population growth over the Plan period.

Table 2: Wajir County Population Projection

| YEAR | 2019 | 2020 | 2025 | 2030 | 2035 | 2040 | 2045 |
|------------------------|---------------------------|---------|---------|-----------|-----------|-----------|-----------|
| Population Size | 781,214 | 806,370 | 944,830 | 1,107,065 | 1,297,157 | 1,519,889 | 1,780,866 |
| Male | 415,374 | 427,376 | 500,760 | 586,744 | 687,493 | 805,541 | 943,859 |
| Female | 365,840 | 378,994 | 444,070 | 520,321 | 609,664 | 714,348 | 837,007 |
| Households | 128,068 | 132,192 | 154,890 | 181,486 | 212,649 | 249,162 | 291,945 |
| Area | 56685.9 Square Kilometers | | | | | | |
| Density | 14 | 14 | 17 | 20 | 23 | 27 | 31 |

Source: State Department for Physical Planning, 2022

The working-age population (15-64-year-old) in 2022 is projected to be 414530, 48.3% of the total population in 2030 and 62.2 percent by 2045.

3.4.2 Economy

The entire county is categorized as trust land apart from the areas occupied by townships. The land is mostly used communally for nomadic pastoralism, but a small percentage is under small scale agriculture.

Agriculture is practiced in depressions and along drainage lines where there is more moisture due to seasonal flooding. The minimal irrigation is limited in areas with permanent shallow wells. However, there is high irrigation potential supported by rain and flood water harvesting through exiting drainage lines. Livestock production is low due to low livestock population density caused by low land-carrying capacity of the rangeland. The main crops produced include sorghum, drought tolerant maize, beans, melons, cowpeas, green grams and horticultural crops like mangoes, citrus, kales, spinach, tomatoes, sweet and hot peppers.

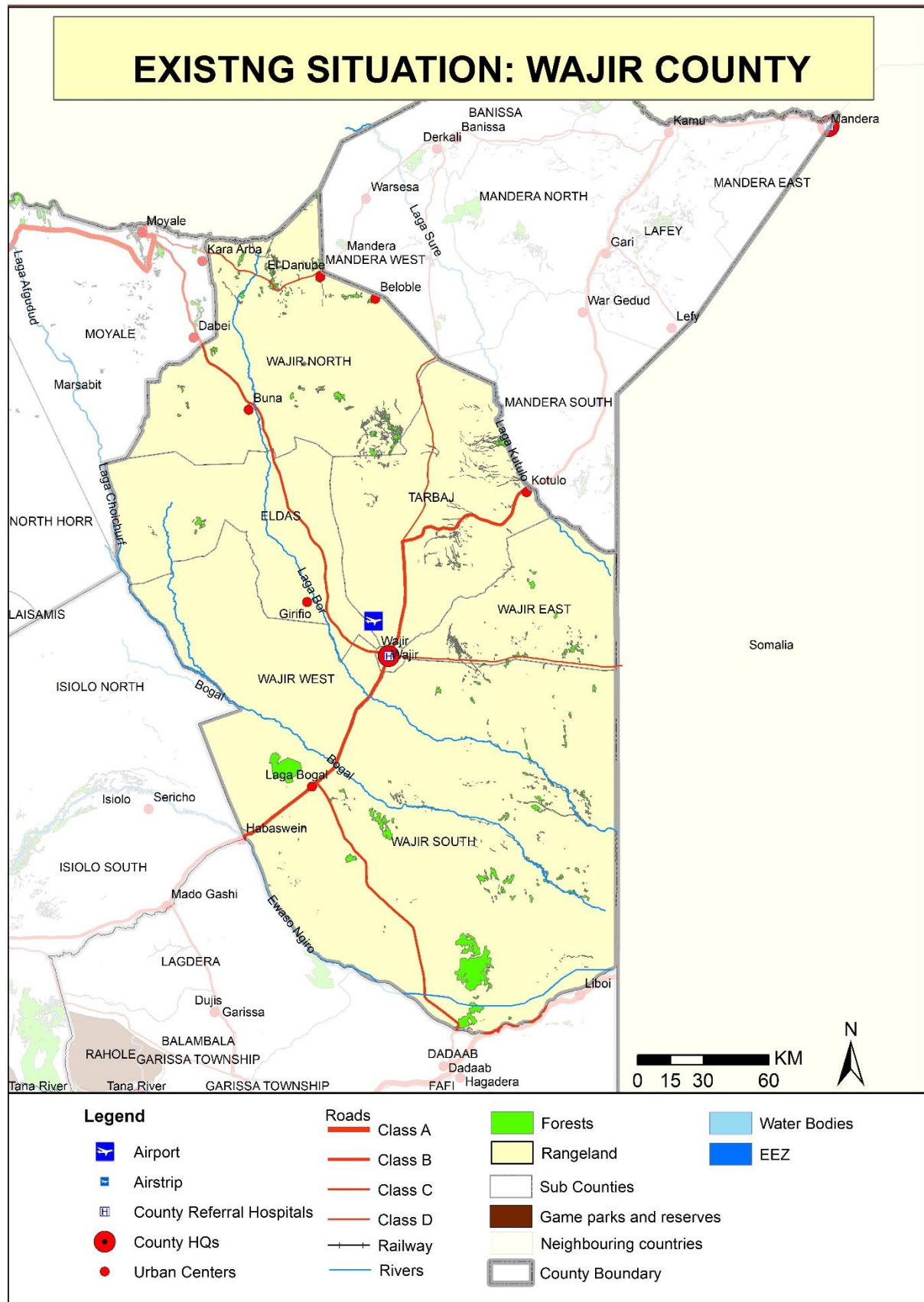
3.4.3 Water

The main source of water for Wajir County is the seasonal Ewaso-Nyiro River. Lake Yahud, which is an underground and permanent lake, situated on the periphery of Wajir town provides water for wildlife and quarry activities. Other sources of water include boreholes, shallow wells, pans and dams.

3.4.4 Industry

Wajir County has great potential for agro-based and mining-based industries. Beekeeping is a major activity and offers potential for honey processing factory(s). The County has high potential for large scale livestock farming through ranching which can support livestock-based industries. Forest products including gum and resin offer a niche for value-addition and value chain development in this sector. The County has potential for renewable energy which can be tapped through wind and solar energy, and channeled to productive sectors within the County and export to the national grid. Map 2 below indicates the existing situation in Wajir County.

Map 2: The Existing Situation in Wajir County



Source: State Department for Physical Planning, 2022

3.5 County's Comparative Advantage

Gateway County

The County has Wajir airport, a gazetted point of entry that provides opportunity for a vibrant aviation industry for the region, and shares part of its Northern border with Ethiopia and its Eastern border with the Federal Republic of Somalia. The County is within close proximity of the Moyale One Stop Border post. This offers potential for regional integration. Hence, there is a need to improve development of the emerging border and gateway towns.

Tourism and culture

The County is hinged on rich culture, wildlife and landscape features that provide great potential for a thriving tourism industry. There is need to establish and gazette protected and conservation areas to ensure safety and protection of wildlife. There are existing museums, natural attractions and historical sites, including the Wagalla massacre site, and World-war two fortifications and bunkers with potential to be developed as key tourist attraction sites

Location of key infrastructure

There exists key infrastructure located within or in close proximity to Wajir County. These include the Wajir airport, the Moyale One Stop Border Post, international and national trunk roads that link the County to the Neighboring countries of Ethiopia and Somalia, and the LAPSSSET corridor whose economic area of influence is expected to bolster economic growth in the Northern region of the County.

Transport

The County has an international airport, Wajir Airport that offers great potential for a viable and thriving aviation industry in the northern region of the country. The implementation of the LAPSSSET corridor project will potentially open up the County with opportunity for new linkages to the corridor's road and rail networks. There are existing international and national trunk roads that link the County the Neighboring countries of Ethiopia and Somalia. These include the C80 Wajir-Moyale road and the Habaswein-Dadaab-Liboi road.

Mining and Energy Potentials

The County has potential for oil and gas exploration. There is oil prospecting in the North East part along the Somalia border, and oil exploitation on the eastern part of the County. The county has abundant limestone deposits for cement production. There is need for the County to undertake extensive research, feasibility studies and sustainable exploitation of the available minerals within the County.

The County has high wind and solar energy potential that can be tapped as alternative for electricity generation and for transition towards green energy.

DRAFT

4 DEVELOPMENT STRATEGIES AND POLICY GUIDELINES FOR WAJIR COUNTY

4.1 County Specific Issues and Development Strategies

The National Spatial Plan provides strategies for spatial growth and development across the country. The strategies are aimed at providing a spatial expression to Kenya Vision 2030 and other sector policies.

This section seeks to provide strategies for spatial growth and development of the County by addressing the factors that prevent the County from achieving the intended goals and objectives. The development strategies discussed are aimed at enhancing the national, regional and global impacts, optimizing use of natural resources, creating a County balance and transforming rural areas.

The detailed NSP County-specific issues and development strategies that apply to Wajir County are outlined in Table 3 below;

Table 3: Wajir County Specific Issues and Development Strategies

| Strategy 1: Enhancing National, Regional and Global Competitiveness | | |
|--|--|--|
| Opportunities | Constraints | Strategies |
| <ul style="list-style-type: none"> ➤ Wajir airport, a gazetted Point of Entry ➤ Strategic location bordering with Ethiopia and the entirety of its Eastern border with the Federal Republic of Somalia. ➤ Strategic location within close proximity of the Moyale One Stop Border post. ➤ Strategic location on the LAPSSET corridor economic area of influence to the North of the County | <ul style="list-style-type: none"> ✓ Poor state and lack of connectivity of the roads ✓ Inadequate transport linkages with neighboring counties and countries. ✓ High safety and security risks | <ul style="list-style-type: none"> • Plan and provide appropriate hierarchy of roads, to increase internal external linkages within the County • Plan and provide efficient air transport to increase linkage with other regions • Enhance security surveillance, monitoring and counterterrorism action to improve safety and security |

| | | |
|--|--|---|
| <p>➤ Existing international and national trunk roads. The C80 Wajir-Moyale road which links to the A2 Marsabit Moyale Road and the Habaswein-Dadaab road linking the County to Somalia through Liboi on the A3 Highway</p> | | <ul style="list-style-type: none"> • Identify and leverage potential areas of corporation with Ethiopia, Somalia, IGAD and COMESA. |
| <p>➤ Trade liberalization and open global market for goods and services</p> | <ul style="list-style-type: none"> ✓ High cost of production occasioned by high cost of energy, inefficient transport system, and outdated technology ✓ Low quality of products and services | <ul style="list-style-type: none"> • Formulate policies to guide and regulate the harnessing of the renewable and green energy sources • Formulate policies to promote and support value-chain development • Plan and provide an integrated, efficient, reliable and sustainable road transport infrastructure • Plan and provide an efficient and integrated railway network • Plan and provide efficient airport facilities to facilitate quick movement of people and delivery of produce and perishable products • Plan and provide for efficient transport integration |
| <p>➤ Member of Frontier Counties Development Council (FCDC) Economic Bloc for economic development within</p> | <ul style="list-style-type: none"> ✓ Inadequate funds to manage the Bloc ✓ Lack of consensus on the focus of potential programs and initiatives | <ul style="list-style-type: none"> • Identify and leverage potential areas of corporation with other bloc members |

| | | |
|--|---|--|
| the region and to foster peaceful co-existence | | |
| ➤ Agro-climatic zone range (v-vi) that supports livestock production and irrigation supported drought resistant food and cash crop agricultural production | <ul style="list-style-type: none"> ✓ Use of inappropriate livestock production methods, inputs and technology ✓ Poor rainfall and projected increase in rainfall deficit ✓ Lack of appropriate agricultural support infrastructures ✓ Lack of a spatial framework to manage land uses ✓ Harsh climatic shocks including drought and floods ✓ High risk of worsening food insecurity | <ul style="list-style-type: none"> • Provide adequate and appropriate infrastructure to support livestock production and irrigation agriculture • Adopt modern methods and practices as well as technology in the whole range of livestock production capabilities in that county • Preparation and review of the County Spatial Plan • Formulate and develop climate change mitigation and adaptation policies and programs • Formulate and prepare land and disaster risk management policies and plans |
| Strategy 2: Optimizing Land and Natural Resources | | |
| Agriculture | | |
| Opportunities | Constraints | Strategies |
| ➤ Agro-climatic zone range (v-vi) that supports livestock production and irrigation supported drought resistant food and cash crop agricultural production | <ul style="list-style-type: none"> ✓ Increased drought risk due to climate change ✓ High risk of worsening food insecurity ✓ Poor rainfall and projected increase in rainfall deficit | <ul style="list-style-type: none"> • Formulate appropriate policy framework to prevent fragmentation of agricultural land and explore land consolidation strategies • Prepare policies and regulations to guide development and exploitation of |

| | | |
|--|--|---|
| <ul style="list-style-type: none"> ➤ High potential for Irrigation through surface and subsurface water exploitation ➤ Existing water pans including 15 mega water pans ➤ Existing national irrigation authority projects including Bute water pan, Ogorgi water pan and proposed Bute mega dam | <ul style="list-style-type: none"> ✓ The agricultural potential in and livestock production areas is negatively impacted by the problem of water scarcity ✓ Inadequate agricultural support infrastructure ✓ Use of inappropriate farm inputs and technology ✓ Population pressure ✓ Inadequate spatial frameworks to manage land uses ✓ Inadequate capacity, skills and resources to fund, develop and operate irrigation, livestock production and agro-based industry projects and programs | <p>underground water potential, rain and flood water harvesting and optimally harnessing the existing surface water</p> <ul style="list-style-type: none"> • Intensification of land use • Provide adequate and appropriate infrastructure to support ranching and irrigation farming • Adopt modern methods and practices as well as technology in the whole range of agricultural capabilities in the County • Formulation of policies to tap the capability and potentials of the County • Restrict the conversion of arable land, natural forests, woodlands and grassland to any other use • Collaborate with other partners to enhance the irrigation potential |
| Environment (Conservation Area & Protection Area) | | |
| Opportunity | Constraint | Strategy |
| <ul style="list-style-type: none"> ➤ High percentage of rangeland ➤ Diverse biodiversity | <ul style="list-style-type: none"> ✓ High flood risk and soil erosion ✓ Loss of vegetation ✓ Climate shocks and high disaster risk especially drought and flood risk across a vast area of the County | <ul style="list-style-type: none"> • Increase forest cover through afforestation, re-afforestation and agro-forestry • Mainstream climate change mitigation and adaptation into the County planning processes, policies and programs |

| | | |
|--|---|---|
| | | <ul style="list-style-type: none"> • Formulate and prepare land and disaster risk management policies and plans • Plan and provide appropriate storm water management infrastructure to optimize rain and flood water harvesting |
| <ul style="list-style-type: none"> ➤ Abundant surface water resources ➤ Extensive ecosystem of drainage lines | <ul style="list-style-type: none"> ✓ Deforestation ✓ Encroachment by human settlement and activities ✓ Declining water quality ✓ Poor rainfall and projected increase in rainfall deficit ✓ Increased drought risk due to climate change | <ul style="list-style-type: none"> • Formulate policy frameworks to protect water catchment areas • Mainstream climate change mitigation and adaptation into the County planning processes, policies and programs • Formulate policy frameworks to contain human settlement and hinder land use change within these areas • Delegation and gazettement of delineated natural forests, wetlands and key water resources • Rehabilitation of wetlands, water sources and natural forests in the County |
| Natural Resource | | |
| Opportunity | Constraint | Strategy |
| <ul style="list-style-type: none"> ➤ High potential for green energy power production ➤ Extensive ecosystem of drainage lines ➤ Abundant potential for limestone mining | <ul style="list-style-type: none"> ✓ Under exploitation of solar and wind energy ✓ Underutilization of solar energy ✓ Inadequate rain water harvesting technology | <ul style="list-style-type: none"> • Adopt sustainable exploitation of the available natural resource potential • Collaborate with other partners to enhance the green energy potential |

| | | |
|--------------------|---|---|
| | <ul style="list-style-type: none"> ✓ Low adoption of technology for exploration and exploitation. ✓ High costs of exploiting available natural resources ✓ Inadequate transport and support infrastructure | <ul style="list-style-type: none"> • Optimal utilization of developed green energy resources • Plan and provide appropriate storm water management infrastructure to optimize rain water harvesting • Invest in appropriate technology and infrastructure • Invest in exploration of potential mineral reserves • Establish county legal Framework for establishing Protection and conservation areas • Establish county regulation framework for enforcement of the existing regulations for safeguarding natural resources • Collaborate with relevant institutions like KFS and KWS on conservation of wildlife, indigenous trees and land protection |
| Industrial | | |
| Opportunity | Constraint | Strategy |

| | | |
|---|---|--|
| <ul style="list-style-type: none"> ➤ High potential for agro-based industries ➤ Potential for mineral-based (limestone) and forestry-based (gum and resin) industries ➤ Support of diversification of the economy | <ul style="list-style-type: none"> ✓ Poor linkage to the markets due to inadequate internal and external connectivity and transport infrastructure ✓ Low technological adaptation for value addition ✓ High cost of production ✓ Price fluctuation | <ul style="list-style-type: none"> • Plan and provide appropriate transport infrastructure to increase internal and external linkages within the County • Provide appropriate technology to enhance value addition • Diversify energy production sources to reduce costs of production and enhance its reliability • Promote the formation of cooperatives and Saccos to advance marketing and control of market prices • Prepare an industrial master plan and formulate policies to guide sustainable mineral exploration • Locate mineral-based industries in situ where the minerals are found |
| Tourism | | |
| Opportunity | Constraint | Strategy |
| <ul style="list-style-type: none"> ➤ Home to a diverse variety of wildlife animal species including Ostrich, Hyenas, Gazelles, Lions, Zebras, Giraffes, Warthog and varieties of Birds and snakes thus a high potential to be a key tourist destination. | <ul style="list-style-type: none"> ✓ Lack of gazetted protection and conservation areas ✓ Inadequate exploitation of tourism potential due to poor quality and inadequate infrastructure ✓ Encroachment of human activities into natural ecosystems and wildlife zones | <ul style="list-style-type: none"> • Plan and provide appropriate tourism support infrastructure. • Establish county legal Framework for establishing Protection and conservation areas • Identify, delegate, delineate and gazette natural forests, wetlands and water |

| | | |
|---|---|---|
| <ul style="list-style-type: none"> ➤ High potential for wildlife conservation within the extensive and diverse ecosystem ➤ Existing nature-based tourism and cultural tourism attractions, and historical tourism attractions | <ul style="list-style-type: none"> ✓ Over reliance on foreign tourism and few marketing ventures targeting nontraditional tourists ✓ Human- wildlife conflicts ✓ Poaching ✓ Less assertive tourism marketing strategies | <p>sources to protection or conservation areas</p> <ul style="list-style-type: none"> • Establish county regulation framework for enforcement of the existing regulations for safeguarding natural resources • Strict enforcement of the existing regulations for safeguarding protection areas • Identify and delegate potential protection and conservation areas for gazetteement • Promote domestic tourism by providing incentives and subsidies • Formulation of laws that highly prosecute poachers • Prepare wildlife management plans to manage wildlife habitats and population • Collaborate with relevant institutions like KFS and KWS on conservation of wildlife, indigenous vegetation and land protection |
| Transport | | |
| Opportunity | Constraint | Strategy |

| | | |
|--|--|--|
| <ul style="list-style-type: none"> ➤ Strategic location on the LAPSSET corridor area of influence to the North of the County ➤ Wajir International airport and seven existing airstrips ➤ International and national trunk roads include the C80 Wajir-Moyale road which links to the A2 Marsabit-Moyale Road and the Habaswein-Dadaab road linking the County to Somalia through Liboi on the A3 Highway | <ul style="list-style-type: none"> ✓ Poor state and lack of adequate connectivity of the roads ✓ High security and safety risks ✓ Inadequate linkages with neighboring counties ✓ Inadequate public transport system, Lack of NMT Infrastructure and inefficient modal split ✓ Encroachment on road reserves ✓ Poor condition of the existing county roads | <ul style="list-style-type: none"> • Plan and provide appropriate hierarchy of roads, to increase internal external linkages within the County • Plan and provide efficient air transport to increase linkage with other regions • Enhance security surveillance, monitoring and counterterrorism action to improve safety and security • Prepare sustainable mobility plans • Enforce a regulatory standard requirement for all public transport service operators • Delineate and enforce road reserve extents • Improve the condition of all County roads to motorable standards |
| Public Utilities | | |
| Water | | |
| Opportunity | Constraint | Strategy |
| <ul style="list-style-type: none"> ➤ Abundant surface water resources ➤ Extensive ecosystem of drainage lines | <ul style="list-style-type: none"> ✓ Poor rainfall and projected increase in rainfall deficit ✓ Increased drought risk due to climate change Deforestation ✓ Encroachment by human settlement and activities | <ul style="list-style-type: none"> • Adopt sustainable exploitation of the available water resource potential • Plan and provide appropriate storm water management infrastructure to optimize rain water harvesting and ground water replenishment |

| | | |
|---|--|--|
| | <ul style="list-style-type: none"> ✓ Declining water quality from pollution and cultivation ✓ Population increase resulting to high demand surpassing supply | <ul style="list-style-type: none"> • Formulate policies to guide regulation of surface water utilization • Formulate policy frameworks to protect water sources and catchment areas • Formulate policy frameworks to contain human settlement and hinder land use change within these areas • Rehabilitation of wetlands, water sources and natural forests in the County |
| Solid Waste Management | | |
| <ul style="list-style-type: none"> ➤ Urbanization – providing economies of scale ➤ Enabling legislation, policies and regulatory frameworks to guide solid waste management | <ul style="list-style-type: none"> ✓ Increased solid waste generation due to increased population pressure ✓ Inadequate solid wastes management facilities | <ul style="list-style-type: none"> • Service all urban settlements by a centralized sewerage treatment and solid waste disposal system • Provided informal settlements with basic infrastructure services to improve the quality of life of low-income urban residents • Apply appropriate technology solutions to sewerage treatment in rural and low-density housing areas • Provide provisions for development of sewer systems and treatment works and solid waste disposal sites within all Physical and Land Use Plans |

| | | |
|--|---|---|
| | | <ul style="list-style-type: none"> • Guide expansion of urban boundaries based on investment in infrastructural services. • Prepare and enact laws to incorporate private public partnerships in infrastructure investments • Adopt appropriate technology to facilitate reduction, recycle and reuse of waste (3R's) • Plan and provide appropriate storm water management infrastructure • Construct waste water treatment plants and solid waste management projects in well-established permanent settlements in the arid regions of the County. |
| ICT | | |
| <ul style="list-style-type: none"> ➤ Existing National Fiber Optic network (NOFBI) ➤ Existing adequate mobile connectivity | <ul style="list-style-type: none"> ✓ Poor access to ICT infrastructure ✓ High cost of ICT equipment | <ul style="list-style-type: none"> • Increase ICT relevant infrastructure • Mainstream ICT in all sectors to promote service delivery • Improve ICT adoption across all sectors • Plan and provide sufficient security ICT infrastructure to support security and counterterrorism activities • Improve on existing platforms such as Huduma center, BPO services and E-government |

| | | |
|---|--|---|
| Energy | | |
| ➤ Abundant potential for wind and solar energy production. | ✓ Inadequate exploitation of the renewable energy potential in the County | <ul style="list-style-type: none"> • Formulate policies to mainstream green energy generation in the County • Identify potential sites and construct solar and wind energy generation plants • Prepare policies that promote green energy for expansion, modernization and upgrading of electricity generation and supply |
| Strategy 3: Balanced Regional Development | | |
| Opportunities | Constraints | Strategies |
| <ul style="list-style-type: none"> ➤ Resource endowment including vast range lands, natural resources, favorable climatic conditions ➤ Enabling policy and legal frameworks ➤ Established Equalization Funds | <ul style="list-style-type: none"> ✓ Weak linkages between rural and urban areas. ✓ Inadequate physical infrastructural facilities and services ✓ Uneven distribution of social infrastructure ✓ Under-exploitation of resources | <ul style="list-style-type: none"> • Provide transport connectivity and adequate inter and intra-county road networks • Establish strong rural urban linkages • Promote industrialization and value addition in less developed areas within the County • Promote investment in sustainable tourism • Promote irrigation activities for improved productivity • Provide and promote equitable distribution of physical and social infrastructure |
| Strategy 4: Promoting Rural Development | | |

| | | |
|---|--|---|
| <ul style="list-style-type: none"> ➤ Resource endowment in rural areas (irrigation agriculture, large-scale livestock production and tourism) ➤ Human resource (both skilled and unskilled) ➤ Enabling policy and legal frameworks ➤ Established Equalization Fund ➤ Devolution of governance and national resources | <ul style="list-style-type: none"> ✓ Inefficient and dilapidated social and physical infrastructure facilities and services ✓ Weak rural-urban linkages ✓ Underutilization of the resources in the rural areas ✓ Inadequate transport infrastructure and utilities ✓ Dispersed human settlement distribution ✓ High risk land fragmentation due to population pressure | <ul style="list-style-type: none"> • Promote rural industrialization and value addition in less developed areas in the County • Plan and provide strong rural urban linkages • Formulate policies and prepare plans to guide sustainable utilization of available resources in the rural areas • Plan and develop appropriate transport and infrastructural facilities and services to support the exploitation of hinterland resources • Formulate appropriate policy framework to prevent fragmentation of land and explore land consolidation strategy • Modernize irrigation agriculture to promote high yield production |
| Strategy 5: Urbanization | | |
| <ul style="list-style-type: none"> ➤ Human resource (both skilled and unskilled) ➤ Enabling policy framework ➤ Existing infrastructure ➤ Devolution of governance ➤ Established Equalization Funds | <ul style="list-style-type: none"> ✓ Weak rural-urban linkages ✓ Rapid urbanization rates and high risk of urban sprawl ✓ Weak and uncoordinated development control and enforcement systems. ✓ Poor enforcement of existing legislation on housing development and land use ✓ High and rapidly increasing population | <ul style="list-style-type: none"> • Strengthen the urban rural linkages to reduce the rate of urbanization • Provide services and infrastructure closer to the rural areas • Prepare physical and land use plans and policies for urban areas to promote urban containment and sustainable human settlement |

| | | |
|--|---|--|
| | <ul style="list-style-type: none"> ✓ Inadequate physical and land use planning, and high cost of housing ✓ Poor implementation of development plans and planning policies ✓ Inadequate and dilapidated transport infrastructure and utilities ✓ Deteriorating infrastructure ✓ Poor waste management ✓ Land and governance issues. ✓ Proliferation of informal settlements ✓ Land and governance issues | <ul style="list-style-type: none"> • Enforce, harmonize and regularly review the existing legislative and regulatory instruments • Plan and provide appropriate and adequate transport infrastructure and utilities • Promote the development of centres based on potential and population • Formulate policies and establish programs to promote sustainable waste management • Strengthen existing land management institutions |
|--|---|--|

DRAFT

4.2 National Spatial Plan Policy Guidelines and Measures for Wajir County

The National Spatial Plan has stipulated policies to provide a foundation upon which to anchor the strategies enumerated therein. The primary aim is to inculcate discipline in the use of land and natural resources of the country thus stemming duplication and wastage of the resources.

This section seeks to provide the spatial policy guidelines and measures aimed at promoting the achievements of the objectives of the National Spatial Plan using its guidelines. These policies are supported by a wide range of measures which spell out the specific actions to be undertaken to actualize the policy intentions. The policies shall be implemented by the County Government's agencies responsible for planning and development control as well as the authorities responsible for land administration.

Outlined in Table 4 are the policies and measures specific to Wajir County.

Table 4: NSP Policy Guidelines for Wajir County

| | Sector/Area | Policy | Measures |
|----------|---|---|---|
| 1 | <p>Resource Potential Growth Regions: Region 3: North, Eastern and upper coast</p> <p>Key Urban Centres: Wajir, Habaswein, Tarbaj, Eldas, Griftu and Bute</p> <ul style="list-style-type: none"> ➤ Irrigated agricultural potential ➤ Livestock production potential ➤ Nature-based, cultural and historical and archeological tourism potential | <ul style="list-style-type: none"> ✓ Enhance irrigation agriculture, livestock production and value addition ✓ Adopt sustainable exploitation of the available natural resource potential ✓ Improve and intensify Livestock and agricultural Extension, Training, Research and Information Services ✓ Concentrated development around key urban areas ✓ Land Use intensification | <ul style="list-style-type: none"> • Infrastructure provision to support value addition initiatives and human settlement • Rural development through provision of infrastructure, irrigation agriculture and livestock sector development, value addition and value chain development • Facilitate the transformation from traditional to modern irrigation agriculture and livestock production practices • Develop small and medium centres |

| | | | |
|----------|---|--|--|
| | | <ul style="list-style-type: none"> ✓ Investment in social and physical infrastructure ✓ Development of tourism infrastructure ✓ Environmental protection and conservation | <ul style="list-style-type: none"> • Conservation, management and sustainable use of water resources • Development and rehabilitation of key infrastructure in the County • Protection and Conservation of environment, wildlife and forest resources |
| 2 | County Spatial Structure | <ul style="list-style-type: none"> ✓ Utilise the National Spatial Plan (NSP) as the guiding framework to achieve integrated and sustainable spatial development ✓ NSP as a basis for preparation of lower tier physical and land use development plans | <ul style="list-style-type: none"> • Align Spatial/Physical Plans to conform to the objectives and policies of the NSP • 5-year review of medium term Physical and Land Use Plans shall take into account provisions of the NSP • Sectoral policies to take cognizance of objectives and policies of NSP • Provide planning authorities with adequate human, financial and technical resources |
| 3 | Enhancing National Competitiveness | <ul style="list-style-type: none"> ✓ Selective concentration concept shall be adopted for the planning and location of urban based economic activities to leverage on national competitiveness. | <ul style="list-style-type: none"> • Preparation of Spatial Development Plans to guide development in the selected urban and rural growth areas • Formulation of urbanisation policies that promote compact urban development and sustainable human settlement |
| | | <ul style="list-style-type: none"> ✓ Provide major urban areas with appropriate infrastructure to enhance efficiency and quality of life | <ul style="list-style-type: none"> • Enhance the Liveability Index for urban areas by providing quality and affordable housing, efficient public transportation, improving neighbourhood characteristics, conserve and improve the quality of the environment, quality healthcare, create job |

| | | | |
|--|--|--|--|
| | | | <p>opportunities, and promote civic and social engagement</p> <ul style="list-style-type: none"> • Provide appropriate trunk infrastructure in the form of reliable energy, water, sanitation and ICT • Improve the road infrastructure by providing for relevant modal split, linkages and interchanges |
| | | <p>✓ Optimise and sustainably utilise land and natural resources</p> | <ul style="list-style-type: none"> • Encourage the transformation from traditional farming and livestock keeping methods to modern practices • Widen the County economic base through strengthening value addition and value chain development for agricultural and livestock products • Identify and develop the tourism potential within the County • Explore and exploit the mineral, energy and water potentials • Provide transportation networks and other infrastructure necessary to support exploitation of land and other natural resources • Provide technical training and social development programmes to enhance integration of the community into the modern economy |

| | | | |
|----------|--------------------------------|---|---|
| | | | <ul style="list-style-type: none"> • Support development of urban areas in the less developed areas to catalyse development |
| | | <ul style="list-style-type: none"> ✓ Enhance efficiency of the transportation network to take advantage of the strategic location and position of the County | <ul style="list-style-type: none"> • Prepare spatial development plans for the main transportation corridors to guide their development for sustainable economic growth and transportation • Renew and modernize the existing international and national trunk roads to spur economic development • Provide for robust transportation for efficient, modern and low-cost connectivity by Air, Rail, Road and Fibre Optic • Establish efficient transport linkages to Points of Entry and Exit |
| | | <ul style="list-style-type: none"> ✓ Enhance cooperation in spatial and economic planning with member counties of the Frontier Counties Development Council (FCDC) Economic Bloc | <ul style="list-style-type: none"> • Undertake joint planning of trans-boundary resources, transport corridors and infrastructure, and border urban areas |
| 4 | Modernizing Agriculture | <ul style="list-style-type: none"> ✓ Rangelands shall be developed and optimally utilised for large scale commercial production of livestock to support downstream processing of | <ul style="list-style-type: none"> • County Spatial Plan prepared shall guide and promote large-scale livestock production and irrigated agriculture based on the County potential |

| | | | |
|--|--|---|--|
| | | <p>livestock products and promote balanced regional development</p> | <ul style="list-style-type: none"> • Prioritize provision of requisite infrastructure to support large scale livestock production • Modernize livestock keeping through appropriate animal husbandry, product processing and timely marketing • Provide transport connectivity and adequate inter and intra-road networks as well as other social and physical infrastructure • Adopt appropriate rangelands management practices • Early warning systems, prompt response and recovery systems to build resilience to the high flood risk and perennial drought cycle • Increase livelihood diversification, productivity and competitiveness and create an investment environment based on local dynamics and internal potential • Establish infant industries in rural and rangeland areas for value addition and investments opportunities • Enhance ASAL climate change adaptation and mitigate desertification |
| | | <p>✓ The use of land in the arable rangelands shall be intensified to increase productivity</p> | <ul style="list-style-type: none"> • Adopt modern agricultural production methods and practices • Upscale the adoption of technology in agricultural production • Encourage mixed farming • Promote agri-business |

| | | | |
|----------|--------------------------|--|--|
| | | | <ul style="list-style-type: none"> • Provide appropriate infrastructure to support the exploitation of potential areas for drought resistant food and cash crops |
| | | <ul style="list-style-type: none"> ✓ Optimize potential by promoting investment in irrigation agriculture for food and high value crops | <ul style="list-style-type: none"> • Undertake research to identify high potential irrigation areas in the County • Rehabilitate, expand and operationalize existing irrigation schemes • Establish new irrigation schemes in the identified potential areas • Encourage small holders' irrigation schemes through sensitization campaigns and reduction of capital costs for investments |
| 5 | Diversify Tourism | <ul style="list-style-type: none"> ✓ Promote diversification of tourism by offering diverse products | <ul style="list-style-type: none"> • Developed tourism to offer; adventure tourism, ecotourism, cultural tourism, Meetings, Incentives, Conferences, Exhibitions (MICE), agro-tourism, ecological, safari and wildlife tourism, and archaeological and historical tourism |
| | | <ul style="list-style-type: none"> ✓ Governance of tourism shall be enhanced | <ul style="list-style-type: none"> • Prepare integrated Physical and Land Use Plans to guide development of the tourism sector • Prepare and implement County Policies on land use, wildlife and tourism • Identify and map potential eco-tourism development sites • Undertake awareness campaigns on the value of eco-tourism to the industry players • Develop guidelines for eco-tourism establishments |

| | | | |
|--|--|---|--|
| | | | <ul style="list-style-type: none"> • Facilitate access to eco-tourism development incentives • Enhance security surveillance, monitoring and counterterrorism action to improve safety and security to boost confidence in tourism sector |
| | | <p>✓ Appropriate tourism support infrastructure and facilities to be provided</p> | <ul style="list-style-type: none"> • Carry out an inventory of tourism infrastructure and facilities in the County • Formulate planning regulations and standards to guide tourist specific infrastructure and facilities • Develop the requisite tourism support infrastructure and facilities • Upgrade the existing tourism facilities and infrastructure • Adopt low carbon and green tourism infrastructure options • Provide and upgrade the ICT infrastructure to support tourism |
| | | <p>✓ Tourist attraction areas and sites shall be conserved and protected</p> | <ul style="list-style-type: none"> • Identify, map and protect all wildlife migratory corridors • Prepare action area plans for the wildlife migratory and dispersal corridors and wildlife habitat • Prohibit the location of incompatible land use activities • Strictly regulate developments within the tourist attraction sites • Protect wildlife watering points |

| | | | |
|----------|-----------------------------------|---|--|
| | | <ul style="list-style-type: none"> ✓ Spatial Development plans shall be prepared to guide development and implementation in the tourism sector | <ul style="list-style-type: none"> • Prepare natural resource, rangeland and wildlife Ecosystem Management plans • Identify, delegate, delineate and gazette potential protection and conservation areas • Prepare Ecosystem area plans for all parks and reserves |
| 6 | Managing Human Settlements | <ul style="list-style-type: none"> ✓ Anticipate and accommodate the expected increase in population in urban areas | <ul style="list-style-type: none"> • Develop Wajir as a principle town and alternative growth area in accordance with its potential • Upgrade the existing and provide additional infrastructure and facilities to support housing, industrial and the service sectors • Promote adoption of technology and fiscal incentives and market support for the informal sector • Prepare Local Physical and Land Use Plans for urban areas to delineate urban limits |
| | | <ul style="list-style-type: none"> ✓ Develop and support alternative urban to promote balanced regional development and spur growth | <ul style="list-style-type: none"> • Develop market centres as intermediate centres between the rural and the principal towns • Provide principal towns and urban centres with the requisite physical and social infrastructure |
| | | <ul style="list-style-type: none"> ✓ Improve management and governance of human settlements | <ul style="list-style-type: none"> • Build capacities of the urban areas management boards • Integrate technology in management of human settlements to strengthen urban data systems |

| | | | |
|--|--|---|--|
| | | | <ul style="list-style-type: none"> • Coordinate and strengthen development control mechanisms • Provide adequate human resource and improve their capacity in management of human settlements in the sectors of; housing, settlement, land, infrastructure, construction, energy and disaster management • Enter public private partnerships in the provision of housing. |
| | | <p>✓ Peri-urban development shall be managed and controlled to contain urban growth within its limits and protect rural land uses</p> | <ul style="list-style-type: none"> • Formulate policy for urban containment and densification • Formulate and implement planning legislation on peri-urban planning and management • Create green belts and buffer zones to define the urban and peri-urban areas • Incentivize local farmers to preserve agricultural land by promoting local production and providing ready markets for agricultural produce |
| | | <p>✓ Develop human settlements in line with environmental and natural resources conservation to improve living conditions</p> | <ul style="list-style-type: none"> • Map out and prohibit human settlements in environmental sensitive areas • Plan and provide an integrated waste management system • Prepare and implement zoning guidelines to ensure compatibility of land uses |

| | | | |
|--|--|---|--|
| | | | <ul style="list-style-type: none"> • Strengthen the capacity of the local governing bodies to effectively deal with environmental challenges • Empower the community to assume responsibility and authority for managing and enhancing their environment • Provide adequate and functional open spaces in urban places • Prescribe planning standards for open/green space on private development • Aim for zero carbon building standards and ensure all buildings meet energy efficiency criteria |
| | | <p>✓ Rural growth centres shall be rationalized and supported to act as central places, and settlements clustered to free the agro potential areas and rangelands</p> | <ul style="list-style-type: none"> • Provide basic services such as extension services, health facilities, markets, sanitation, water, power and education to improve the quality of rural life • Undertake sensitization and awareness campaigns on the need to conserve agricultural land by discouraging land fragmentation • Link growth centres by means of secondary roads as a minimum • Promote sectors such as livestock production and tourism that have potential to stimulate rural development |
| | | <p>✓ Provision of an efficient, reliable and effective transport system for human settlements</p> | <ul style="list-style-type: none"> • Plan and develop an integrated urban transport system to enhance provision of relevant modal split |

| | | | |
|----------|---|--|--|
| | | | <ul style="list-style-type: none"> • Integrate land use and transportation planning to encourage development patterns which reduce transport demands • Establish an effective transport management system • Improve the road conditions and expand the linkages to human settlements • Integrate NMT with existing transport infrastructure • Incorporate the concept of green energy in transport systems planning and redevelopment |
| 7 | Conserving the Natural Environment | <p>✓ All environmentally sensitive areas shall be protected and utilized in a sustainable manner</p> | <ul style="list-style-type: none"> • Prepare integrated natural and ASAL resource management plans • Undertake and support research and training in the conservation and management of the rangeland ecosystems and resources • Promote regional cooperation in the conservation and management of migratory species • Prepare integrated forest resource management plans • Develop and implement a county strategy for rehabilitation and restoration of degraded forests • Gazette, protect and rehabilitate degraded forests • Involve and empower communities in the management of environmental resources |

| | | | |
|----------|--|---|--|
| | | | <ul style="list-style-type: none"> • Promote afforestation and agro-forestry through County Physical and Land Use Plans • Delineate indigenous forest and vegetation areas and formulate regulations for their protection and sustainable utilization |
| | | <ul style="list-style-type: none"> ✓ Community participation shall be mainstreamed in the protection and conservation of natural resources | <ul style="list-style-type: none"> • Sensitize communities living around the natural resources on the need for conservation of the resources • Develop mechanisms for sharing benefits accruing from the natural resources by the conservation agencies in consultation with the local communities • Identify and map all disaster-prone areas for sustainable management and disaster response. |
| 8 | Integrated Transportation Network | <ul style="list-style-type: none"> ✓ Transport and land use planning shall be integrated | <ul style="list-style-type: none"> • Establish a hierarchy of transportation systems comprising rail, road, and air • Repossess all illegally acquired land reserved for transport Infrastructure • Incorporate the needs of persons with disability in all the planning, development and management of the transport network • Plan urban based activities to support mass transit systems and reduce the need for travel in urban areas • Carry out traffic impact assessments for all land use changes as part of development control and as a tool of land use planning |

| | | | |
|----------|---------------------------------|---|---|
| | | | <ul style="list-style-type: none"> • Enhance the planting of trees, greenery as buffer zones to roads and the airstrips |
| | | <p>✓ An integrated and functional transport system for the urban areas shall be developed</p> | <ul style="list-style-type: none"> • Renovate and upgrade Wajir Airport and existing airstrips • Provide access and linkage, between county and sub-county's headquarters and for local access and link them to national transportation corridors • Expand all roads connecting county headquarters to sub-county headquarters to at least 30m and developed to bitumen standard • Develop roads connecting infrastructure installations of county and national importance and resource areas to bitumen standard |
| | | <p>✓ Environmental conservation shall be upheld in the planning, development and management of the transportation network</p> | <ul style="list-style-type: none"> • Construction and management of the transport network to abide by environmental regulations and standards • Promote the use of green energy in all transportation systems • Enforce emission testing in all transport modes |
| 9 | Providing Infrastructure | Appropriate | <p>✓ Safe, adequate, reliable and affordable electricity for both urban and rural settlements shall be provided</p> <ul style="list-style-type: none"> • Tap into large scale production of green energy (solar, wind, hydropower) for sale to the national grid • Explore alternative options of power generation |

| | | | |
|--|--|--|--|
| | | | <ul style="list-style-type: none"> • Provide safe and reliable electricity connections for all informal settlements in urban areas for safety. • Mainstream and enforce green energy options in the design of buildings • Build institutional and human resource capacities in the energy sector • Increase access to electricity through upgrading and expansion of the national power transmission and distribution network |
| | | <p>✓ Expansion and improvement of water reticulation systems to facilitate access to clean, safe, adequate, reliable and affordable water in human settlements shall be promoted</p> | <ul style="list-style-type: none"> • Construct and rehabilitate water supply systems and rural water schemes • Incorporate water provision in all physical/spatial development plans • Partner with neighbouring counties in the rehabilitation and protection of water sources • Improve and expand connectivity and water supplies in the key urban and rural growth centres • Develop water supply systems and sewers, and a comprehensive mapping of all water supplies systems in the informal settlements |
| | | <p>✓ A network of functional, efficient, safe, accessible and sustainable county health referral infrastructure shall be established</p> | <ul style="list-style-type: none"> • Increase the utilization of services at lower levels of the health services • Develop service provider capacity to offer services • Improve preparedness and response to emergencies |

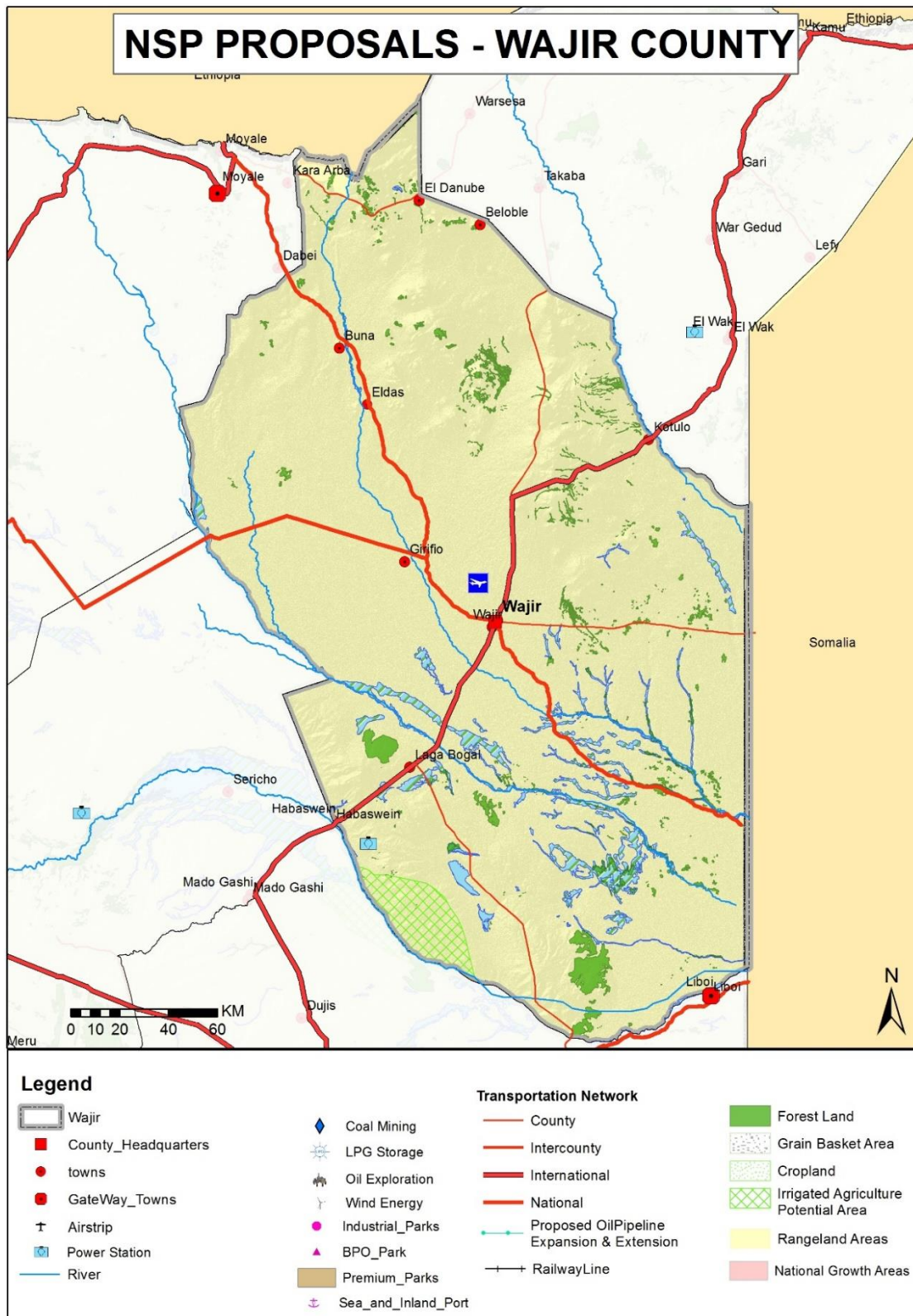
| | | | |
|--|--|---|---|
| | | | <ul style="list-style-type: none"> • Provision of quality emergency health services at the point of need • Strengthen outreach systems for provision of health services to marginalized and vulnerable population • Establish fully fledged low-cost diagnostic centre and provide adequate screening and treatment facilities for persons with chronic or terminal conditions • Modernization of infrastructure and hospital equipment at the referral hospital(s) |
| | | <p>✓ Appropriate, quality, efficient and cost-effective ICT infrastructure in both rural and urban areas shall be promoted</p> | <ul style="list-style-type: none"> • Integrate e-youth ICT platforms • Mainstream use of ICT in all levels of county government and the private sector (e-government) • Develop and upgrade ICT Infrastructure in the security sector • Extend ICT infrastructure to cover all the rural and local growth centres |
| | | <p>✓ The expansion of sewerage systems and waste management facilities shall be promoted to improve sanitation in human settlements</p> | <ul style="list-style-type: none"> • Service all urban settlements by a centralized sewerage treatment system and solid waste disposal facilities • Construct sewerage coverage and capacity for the major urban centres of Wajir, Habaswein, Tarbaj, Eldas, Griftu and Bute • Provide basic infrastructure services in order to improve the quality of life of low-income urban residents |

| | | | |
|-----------|---|---|--|
| | | | <ul style="list-style-type: none"> • Apply appropriate technology solutions to sewerage treatment • All Physical and Land Use Plans to make provision for development of sewer and waste management infrastructure • Expansion of urban boundaries to be guided by investment in infrastructural services • Adopt appropriate technology to facilitate reduction, recycle and reuse of waste (3R's) • Undertake rehabilitation of storm water drainage systems • Construct waste water treatment plants and solid waste management projects in well-established rural settlements and growth areas • Enact county laws to incorporate private public partnerships in infrastructure investments |
| | | <ul style="list-style-type: none"> ✓ Sporting infrastructure shall be planned, developed, maintained and the existing rehabilitated to promote sports development | <ul style="list-style-type: none"> • Establish a County Sports Talent Centre to scout, tap, nurture and develop sports talents • Undertake to rehabilitate all stadia to national and international standards |
| 10 | Towards a Rapidly Industrializing County | <ul style="list-style-type: none"> ✓ The cluster development strategy shall be promoted to focus on proximity to raw materials and markets of region-specific products | <ul style="list-style-type: none"> • Mineral-based industries to be located in-situ where the minerals are found • Establish livestock produce, horticulture and agro-based industries in the relevant potential zones within the County |

| | | | |
|--|--|---|--|
| | | | <ul style="list-style-type: none"> • Promote value addition in processing of local livestock and agricultural produce |
| | | <ul style="list-style-type: none"> ✓ Specific sites for industrial development shall be identified, planned and serviced | <ul style="list-style-type: none"> • Plan and set aside land for industrial development in every sub-county • Develop at least one SME and Industrial Park in the County • Integrate the industrialization process and environment conservation • Provide an integrated, efficient, reliable and sustainable road transport infrastructure • Provide efficient air transport facilities to facilitate quick delivery of produce and perishable products • Increase availability of clean water and improve sanitation • Discharge of safe/ clean industrial waste into water bodies shall be encouraged |
| | | <ul style="list-style-type: none"> ✓ Adequate and affordable energy supply for the industrial sector shall be provided | <ul style="list-style-type: none"> • Adopt renewable energy generation programs • Provide reliable energy infrastructure by extending the national grid network • Incentivize large industries to promote co-generation of power • Promote the adoption of energy efficient technologies to lower the demand for energy |

Map 3 below provides a spatial representation of the policies proposed for the County.

Map 3: NSP Proposal for Wajir County



Source: State Department for Physical Planning, 2022

5 IMPLEMENTATION AND ADOPTION OF THE GUIDELINES

5.1 Overview

The implementation framework identifies activities and further ties them with responsible actors, resources and timeframes adequate for their execution. It constitutes a deliberately established method, means or system of ensuring that the policies, strategies and measures outlined in the guidelines are continuously and consistently executed to achieve their objectives.

To effectively implement the guidelines, the various sectors, actors and levels of planning have been identified and have to work together and the mandate of the sectors at the National and County levels of planning have to be integrated.

5.2 Implementation Channels

The County Specific Guidelines will be implemented through various approaches including:

1. Preparation of spatial plans to integrate and conform to the proposals of the County Guidelines. The plans include:
 - Inter-County Physical and Land Use Development Plans for Metropolitan regions, conservation zones, river basins, water towers, coastal ecosystems, trans-boundary resource areas and transport corridors, among others.
 - County Physical and Land Use Development Plans.
 - Local Physical and Land Use Development plans for Cities, Urban areas, special area plans, subject plans and detailed neighbourhood plans, among others.
 - Sectoral plans
2. Integration of the guideline policies, strategies and measures into the County sector plans, programs and projects. Ministries, Departments and Agencies (MDAs), County and National Departments identified in the plan to administer the policies, strategies and measures are required to translate them into action plans, programmes and projects and to include them in their subsequent sector plans.
3. Formulation of policies, regulations and standards to guide development control.

5.3 Implementation Framework

The implementation of the various policies, strategies, measures, programmes and projects under these guidelines will involve a wide range of actors. It will require a coordinated approach and partnership between the National and County Governments and non-state actors. It may require re-engineering of institutions and a number of actors to undertake the implementation through a harmonized approach.

The National Spatial Plan identified a multi-leveled framework for implementation of the plan that incorporates all levels of actors. In this regard, the institutions identified in the NSP to undertake implementation of the plan at County-level shall also be mandated to ensure implementation of this Guidelines.

The following are the Institutions mandated to ensure implementation of the County Specific guidelines;

5.3.1 County Physical Planning Committee

The role of the County Planning Committee shall be to ensure aspirations of the guidelines are articulated in preparation of the County Spatial Plans, County Integrated Development Plans and Local Physical and Land Use Development Plans.

The composition of this committee consists of;

- i. The Governor who will be the Chairperson,
- ii. the Deputy Governor,
- iii. the County Executive Committee Members from various sectors
- iv. Directors from various relevant County Departments including Lands and Physical Planning, Economic planning, Agriculture, Industrialization, Tourism, Environment, Transport and Infrastructure

The functions of the committee include;

- 1) To promote effective integration between physical, economic and sectoral planning within the framework of county development policies.
- 2) To provide policy guidance for the implementation of strategic spatial projects
- 3) To ensure that the guidelines policies and measures are mainstreamed in the various county plans.

- 4) To mobilize resource for implementation of the guidelines.

5.3.2 County Planning Unit (CPU)

The Technical Unit shall provide technical support to the various implementing County departments on issues relating to physical planning.

The CPU shall;

- i. Monitor the Implementation of the guidelines.
- ii. To disseminate components of the guidelines to the various county departments.
- iii. Update the County Physical Planning Committee on a regular basis on the implementation of the guidelines.

The County Director of Physical Planning shall be responsible for preparation of an annual state of planning report which shall among other things appraise the status of implementation of the guidelines.

5.3.3 National Land Commission

The National Land Commission shall play its oversight role in land use planning to ensure efficient implementation of the NSP and the guidelines. Other functions of the Commission in the implementation of the NSP and the guidelines include the following: To formulate mechanisms and parameters for monitoring and overseeing land use planning.

- i. To ensure that relevant planning authorities carry out their functions as required by law.
- ii. To make recommendations for improvements of the planning systems in the county.
- iii. To mobilize resources to support physical/land use planning.

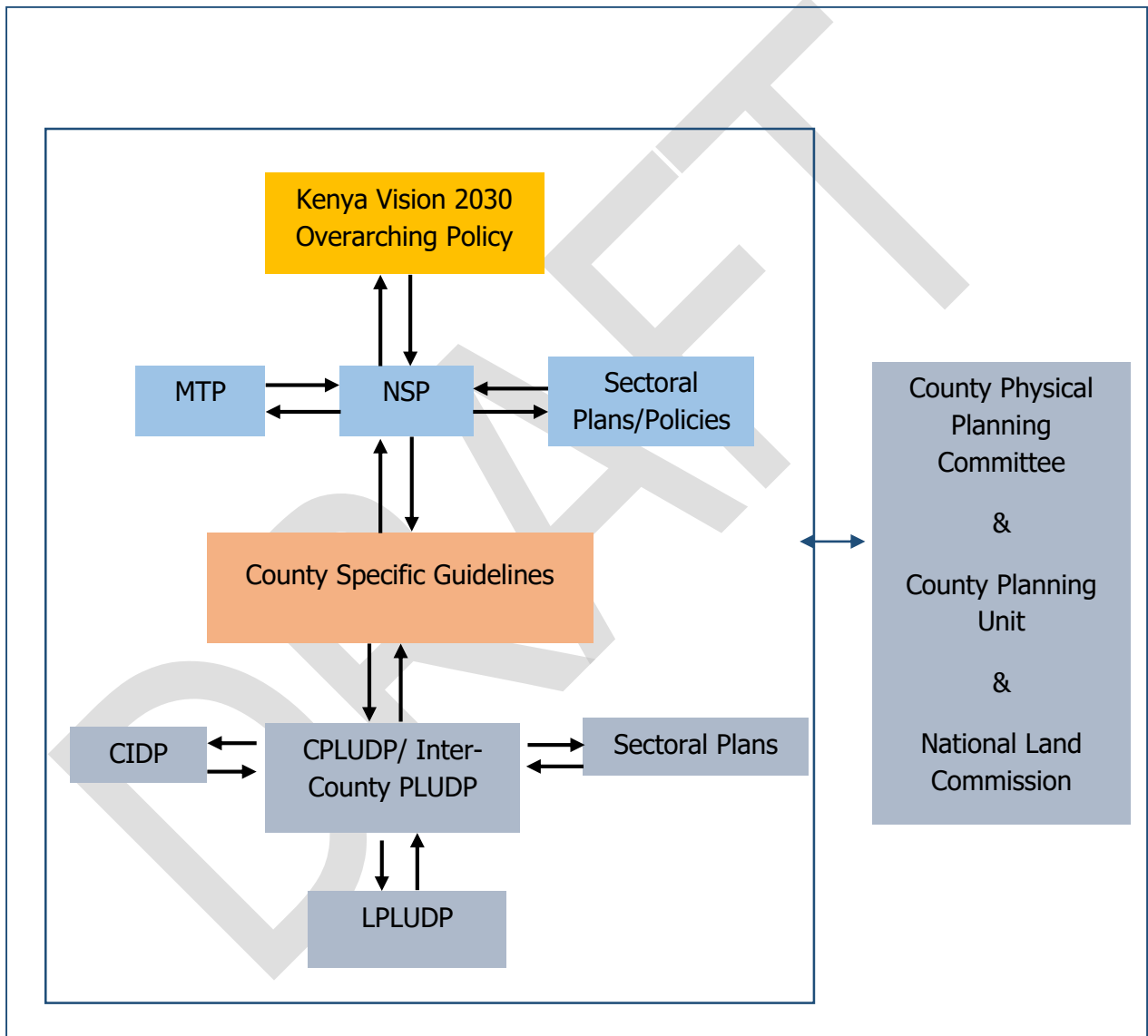
5.4 Monitoring and Evaluation

Implementation of the guidelines will be monitored and evaluated to measure both outputs and outcomes and ensure that the intended actions are implemented in a timely manner. To facilitate attainment of the objectives of the guidelines,

performance indicators will be developed by the County Physical Planning Department for efficient monitoring. Periodic reports will be prepared in relation to progress being made in their implementation.

The graphic below illustrates the implementation structure for County Specific guidelines.

Figure 4: NSP Implementation Organizational Structure



Source: The National Spatial Plan 2015-2045

5.5 Conclusion

The application of these guidelines will be undertaken by a number of actors and hence the need for a coordinated approach. The lead agency will be Wajir County Government which will be responsible for implementing various county specific initiatives proposed by the guidelines.

The National Government, County Government of Wajir, the private sector and the general public will be critical in actualizing the objectives of these guidelines. The County Physical Planning Committee shall develop a communication strategy to enhance the synergies.

The National Department of Physical Planning shall undertake sensitization, training and capacity building of the County Government and National Government institutions and agencies that will be involved in the implementation of these guidelines. Special attention will be given to the County physical planning units, as they will be expected to provide technical expertise in the implementation of the County specific policies and strategies.

DRAFT