



NATIONAL SPATIAL PLAN GUIDELINES FOR WEST POKOT COUNTY



Acknowledgments

Foreword

The Constitution of Kenya apportions responsibility of planning to both National and County Governments. Under the Fourth Schedule on distribution of functions, Part 1 (21) and (32) mandates the National Government with the responsibility of formulating general principles of land planning, co-ordination of planning by the Counties, capacity building and technical assistance to the Counties. On the other hand, Part 2(8) allocates the function of County planning and development to County Governments. It is under these provisions that the County specific guidelines have been prepared.

The Department of Physical Planning prepared the National Spatial Plan (NSP) in response to the Kenya Vision 2030 to guide the spatial development of the country over a period of 30 years beginning in 2015.

It aims at achieving an organized, integrated, sustainable and balanced development of the country by providing a framework for better national organization and linkages between different activities within the national space.

To implement the Plan, the Counties are expected to play a key role by mainstreaming strategies, policies, and measures identified in the NSP into the County spatial planning systems.

The guidelines have identified planning policies, strategies, and measures that Plans at the County level are expected to mainstream and propagate. The policies address among others, the protection of rich agricultural land, development imbalances, conservation of environmentally sensitive areas, urban containment, and promotion of industrial development.

The guidelines provide direction on the existing potentials, the opportunities, the constraints/challenges inhibiting harnessing of the potentials, the strategies to apply, respective policies required, and the necessary measures to achieve optimal productivity, sustainability, efficiency and equity in the use of county land resources.

The guidelines are an opportunity on how best to refocus, vary and complement areas that require different approaches responding to country-specific needs and promote the livelihoods of their people, while contributing to the national aspirations of vision 2030, regional objectives of the Africa Agenda 2063, and international targets of sustainable development. The refocusing will also be handy in reviewing and making decisions on NSP which is due for review in 2025.

These guidelines are therefore a tool for enhancing this critical path and provide a direction for development planning by the Counties as they discharge their responsibility of preparing county and local physical and land use development plans. The guidelines will also ensure that the County Integrated Development Plans conform to the proposed County specific policy guidelines and measures.

DRAFT

PREFACE

The National Spatial Plan (NSP) recognizes that Kenya is greatly endowed with massive and diverse resources distributed over the national space that require an integrated and coordinated approach for optimal productivity and sustainability.

The County Specific Guidelines have been derived from the National Spatial Plan and provide a planning framework for the integration of the NSP into the county spatial planning system. They are clear statements linking the National Spatial Plan to Inter-County, County and lower-level Physical and Land Use Development Plans and provide clarification on the anticipated sustainable development outcomes of implementing the Plan.

The County Government will adopt, develop and implement their plans based on the policies, strategies, and measures articulated in the guidelines. The realized county plans are expected to guide, harmonize and facilitate development within the county, hence contributing to the overall implementation of the NSP.

The guidelines also form an efficient compass and monitoring tool for National and County Governments to jointly pursue sustainable planning and appropriate implementation mechanisms.

For the county to be nationally competitive, there is need to balance development and promote optimal utilization of land and land-based resources as well as cultivate an integrated approach in addressing the intertwined challenges of regional imbalances/inequalities, rural development, underutilization of the available resources, uncontrolled urbanization, environmental degradation and inefficient transportation. It is imperative therefore, to prioritize the implementation of this strategic document so as to promote balanced development and competitiveness across the county

EXECUTIVE SUMMARY

The County Specific Guidelines seek to facilitate the implementation of the National Spatial Plan by outlining policies, strategies and measures to guide County spatial planning and development and promote optimal productivity, sustainability, efficiency and equity in the use of land. They provide a framework for preparation of lower level Plans including Inter-County, County and Local Physical and Land Use Development Plans.

The disconnect between National and County Spatial Planning and development has resulted in uncoordinated and unbalanced development, therefore creating a need for a clear structure that links National, Regional and Local planning and development. This is achievable through integration of the policies, strategies and measures proposed by the guidelines into County Spatial Plans, Programs and Projects, to tackle challenges of unbalanced regional development, urbanization, national competitiveness and unsustainable use of land and natural resources.

The County Specific Guidelines are organized into five chapters detailing various facets. Chapter one provides an overview, purpose and justification of preparation of the guidelines. It also outlines the objectives that the guidelines intend to achieve and details the preparation process as well as intended users. This chapter highlights the key principles that form the basis for preparation of lower level plans including public participation, liveability, sustainable development, urban containment, smart urban growth among others.

Chapter two details the legal and policy provisions that the guidelines are anchored upon. They include, among others, The Constitution of Kenya, 2010, The Physical and Land Use Planning Act No.13 of 2019, County Government Act, 2012, Environmental Management and Coordination (Amendment) Act, 2015, Sessional Paper No. 01 of 2017 on National Land Use Policy and Sessional Paper No. 10 of 2012 on Kenya Vision 2030.

The third chapter analyses the county profile, detailing its location, size, bio-physical characteristics, socioeconomic status and the County's comparative advantage in relation to others. The locational context provides information on the geographical position and bordering Counties while the biophysical context discusses the topography,

hydrology and climate. The socioeconomic status indicates key economic drivers of the County and its population and demographic structure.

Chapter four presents the County specific issues and proposes development strategies to promote national competitiveness, optimal use of land and resources, rural development, balanced intra-county development and urbanization. Additionally, it provides policy guidelines and measures for County advancement.

The final chapter five focuses on implementation and adoption of the guidelines. The implementation framework identifies institutions, County development programs and projects, and further ties them with responsible actors, resources and timeframes for effective execution. It proposes a framework for ensuring that the outlined policies, strategies and measures are adequately implemented.

DRAFT

Contents

List of Maps.....	8
List of Tables	8
List of Figures	8
1 INTRODUCTION	9
1.1 Background.....	9
1.2 Purpose of the Guidelines	9
1.3 Objectives of the Guidelines.....	9
1.4 Scope	10
1.5 Use/application of the Guidelines	11
1.6 Process of preparing the Guidelines	12
1.7 Targeted users of the Guidelines.....	12
1.8 Key Principles.....	15
2 PLANNING CONTEXT OF THE GUIDELINES	Error! Bookmark not defined.
2.1 Justification.....	16
2.2 Constitutional context.....	16
2.3 Legal context.....	Error! Bookmark not defined.
2.4 Policy Context.....	16
2.5 Planning Context.....	18
3 COUNTY PROFILE	22
3.1 Introduction.....	Error! Bookmark not defined.
3.2 Location Context.....	22
3.3 Bio-Physical Context.....	24
3.4 Socio-Economic Background.....	25
3.5 County's Comparative Advantage.....	27
4 WEST POKOT SPECIFIC ISSUES AND DEVELOPMENT STRATEGIES.....	Error! Bookmark not defined.
4.1 NATIONAL SPATIAL PLAN POLICY GUIDELINES FOR WEST POKOT COUNTY	41
5 IMPLEMENTATION OF THE NSP GUIDELINES	55
5.1 Introduction.....	55
5.2 Implementation Channels	55
5.3 Institutional Framework for Implementation.....	Error! Bookmark not defined.

List of Maps

- Map 1: Location of West Pokot County **Error! Bookmark not defined.**
- Map 2: The Existing Situation in West Pokot County **Error! Bookmark not defined.**
- Map 3: NSP Proposals for West Pokot County **Error! Bookmark not defined.**

List of Tables

- Table 1: Targeted Users of the Guidelines 13
- Table 2: Population projection to the year 2045..... **Error! Bookmark not defined.**
- Table 3: County Specific Issues and Development Strategies ..**Error! Bookmark not defined.**
- Table 4: NSP Policy guidelines and measures for the County 41
- Table 5: NSP Implementation Approaches **Error! Bookmark not defined.**

List of Figures

- Figure 1: The Scope of the Guidelines **Error! Bookmark not defined.**
- Figure 2: Policy Focus of the NSP **Error! Bookmark not defined.**
- Figure 3: NSP Linkage to other Plans..... **Error! Bookmark not defined.**
- Figure 4: NSP Implementation Organization Structure..... **Error! Bookmark not defined.**

1 INTRODUCTION

1.1 Background

The County Guidelines set out policies, strategies and measures that will guide the long-term spatial development of the county for a period of 30 years. They cover the entire county and defines the general trend and direction of its spatial development.

The guidelines have been developed in line with the four thematic areas as outlined in the NSP. They provide a guide to the Planning Authority at the county on how to incorporate the NSP policies, strategies and measures during the preparation of County Spatial Plans and other lower level plans like the Local Physical and Land Use Development Plans consequently implementing the NSP.

The NSP County Specific implementation guidelines summarize the County's existing potentials and opportunities, the constraints (challenges) inhibiting harnessing of the potentials, the applicable strategies and respective policies required, and the necessary measures to achieve optimal productivity, sustainability, efficiency and equity in the use of the county land resources. They act as a reference point

1.2 Purpose of the Guidelines

The purpose of the County Specific Guidelines is to provide a planning framework for mainstreaming of the National Spatial Plan to the County spatial planning system.

The guidelines are intended to assist the County enhance the implementation of the NSP by linking the proposed county specific policies, strategies and measures into the County plans, programs and projects while putting measures in place for achieving them. The guidelines inform preparation of various County Physical Plans such as the County Physical and Land Use Development Plans.

For optimal implementation of these plans, a County Integrated Development Plan (CIDP) is essential since it is a sectoral and budgetary based plan that draws its implementation programs and projects from the County Physical Plans.

1.3 Objectives of the Guidelines

The guidelines provide policies, strategies and measures to deal with challenges of regional imbalances/inequalities, rural development, underutilization of the available resources, urbanization, environmental degradation and inefficient transportation.

Specifically, the objectives are;

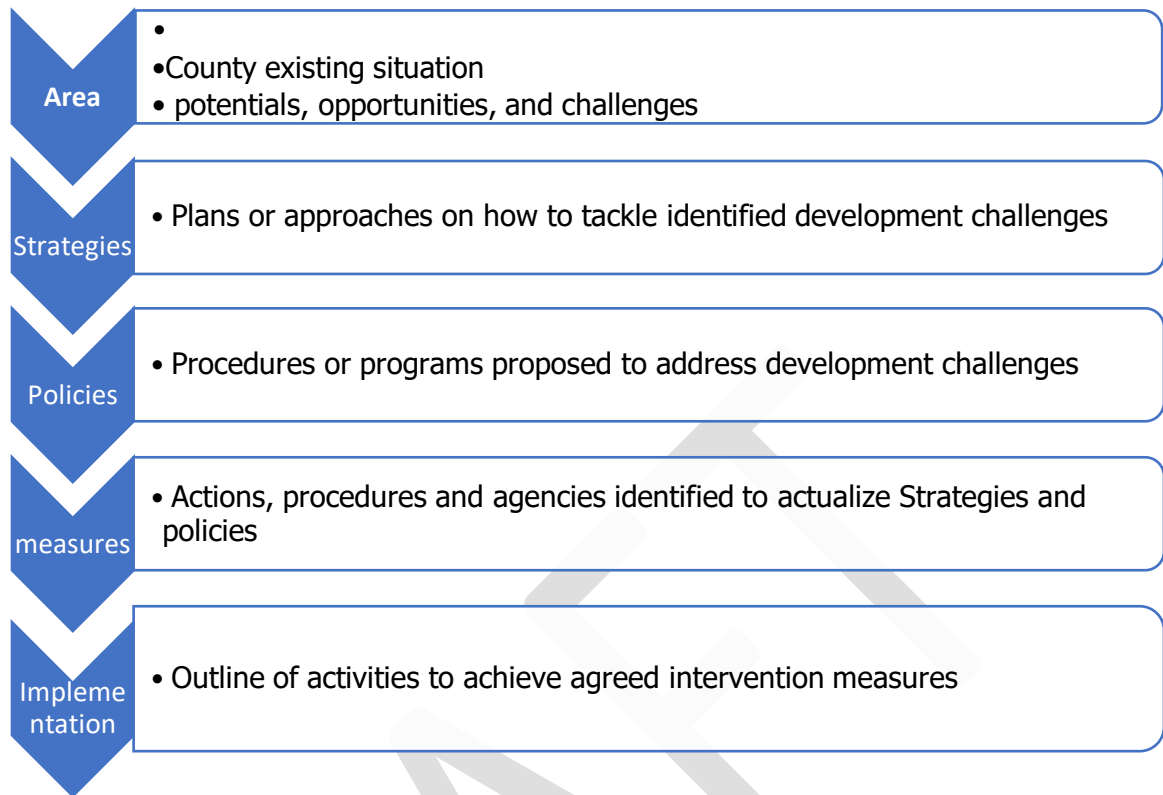
1. To sensitize the County on the provisions of the NSP
2. To promote synergy between National and County planning
3. To guide the County, implement the NSP
4. To identify the roles of the different actors in the implementation of the NSP.

1.4 Scope

The guidelines and strategies are specific to West Pokot County and cover the entire territory of the county measuring approximately 9,169.4 km². The guidelines highlight the County's existing potentials and opportunities, the constraints (challenges) inhibiting harnessing of the potentials, the applicable strategies and respective policies required, and the necessary measures, actions, approaches, plans and procedures prescribed to achieve optimal productivity, sustainability, efficiency and equity in the use of the county's land resources and an outline of activities to execute agreed interventions as captured in the National Spatial Plan, as indicated in Figure 1 below. These guidelines are effective up to the year 2045.

The guidelines highlight the following facets as captured in the National Spatial Plan:

Table 1: Facets as captured in the NSP



Source: *State Department for Physical Planning, 2022*

1.5 Justification

Since the approval and launch of the NSP, its implementation has been undertaken in an uncoordinated manner hence the guidelines will provide a standardized approach for all Counties. The guidelines are also an important tool for tracking and evaluating implementation of the NSP both at National and County levels.

The preparation of County Spatial Plans and other lower-level plans which is a mandate of Counties has been slow and, in some Counties, has not begun at all. These guidelines are therefore a quick reference in preparation of county plans and for some Counties to help optimize land in the absence of these plans.

1.6 Application of the Guidelines

The guidelines and strategies will be used or applied in the following ways to achieve a more sustained and coordinated development of the county;

- To effectively coordinate planning between the national and the County Government;
- To improve county government capacity to formulate, coordinate and implement integrated development policies and programmes to address spatially unbalanced development;
- To inform strategic infrastructure policy and public investment decisions which support the achievement of balanced development in the county;
- To strengthen county inter-sectoral coordination within a spatial framework and provide the private sector with a clear context in which they can make investment decisions;
- To optimize the use of land and natural resources by providing a framework for making sustainable locational choices for sustainable development and conservation of land productivity in the county.

1.7 Process of preparing the Guidelines

The process involved reviewing the National Spatial Plan and identifying key issues, spatial policies, development strategies and measures specific to West Pokot County. These key issues, spatial policies, development strategies and measures will be realized through preparation of County and other lower-level plans.

Research was undertaken on various thematic areas to enrich the County specific issues and development strategies as well as policy guidelines and measures/ interventions. Further, preparation of the guidelines considered the constitutional, policy and legal provisions on physical and land use planning. Expert opinion was sought on the identified issues, policies, measures and strategies for implementation viability.

The preparation of the guidelines was identified as one of the implementation tools of the NSP, in which key NSP issues, policies, strategies and measures were translated into specific action plans, programs and projects at the County level.

1.8 Targeted users of the Guidelines

These Guidelines have diverse consumers and application depending on prevailing circumstances and actors as demonstrated in Table 1 below:

Table 2: Targeted Users of the Guidelines

User	Application
County Executive Committee Member in charge of Physical and Land Use Planning	<ul style="list-style-type: none"> ✓ Preparation of county and lower-level plans ✓ Linkage of planning structures ✓ Quality control of the various county plans ✓ Formulate county planning policies and strategies ✓ Establish county specific planning institutions ✓ Coordinate and implement county plans and policies
The County Director of Physical and Land Use planning	<ul style="list-style-type: none"> ✓ Advising the county government on the impact of the county specific guidelines to the county ✓ Preparation of County physical and land use development plans and other lower level plans ✓ Formulating County physical and land use planning policies, guidelines, strategies, and standards; ✓ Issuance of development permission and other development control instruments under The Physical and Land Use Planning Act, 2013.
Licensed physical and land use planners both in public and private sectors	<ul style="list-style-type: none"> ✓ Prepare, coordinate and implement spatial plans ✓ Quality control of plans and consultancy services ✓ Formulate policies, strategies and development guidelines ✓ Dispute resolution
County assembly	<ul style="list-style-type: none"> ✓ Approval of strategic sectoral budgets such as planning ✓ Vetting of various County specific plans

	<ul style="list-style-type: none"> ✓ Formulation and passing of County planning legislation ✓ Enhance capacity to oversee the executive on spatial planning
Ministries, Departments and Agencies	<ul style="list-style-type: none"> ✓ Mainstreaming relevant NSP policies, programs and projects ✓ Allocation of resources to priority areas, ✓ Strengthening linkages with spatial planning in resource management
The National Land Commission (NLC)	<ul style="list-style-type: none"> ✓ Oversight role in land use planning to ensure efficient implementation of the NSP ✓ Ensure relevant planning authorities carry out their functions as required by the law
Practitioners in the built environment	<ul style="list-style-type: none"> ✓ Advance NSP relevant policies, programs and projects hence optimization of land resource • Appreciate sectoral Linkages to spatial planning • Facilitate incorporation of the policies, strategies and measures into, County specific plans
Community, developers and investors	<ul style="list-style-type: none"> ✓ Comprehend the County priority sectors and County Plans and policies ✓ Complement County spatial planning and implementation measures ✓ Making informed investment decisions
Development partners	<ul style="list-style-type: none"> ✓ Reference frame for selecting and funding spatial planning activities ✓ Understand planning linkages and implementation ✓ Informed development decisions
Training institutions	<ul style="list-style-type: none"> ✓ Compliment the curriculum for training of spatial planners ✓ Understand the planning procedures and processes

1.9 Key Principles

The principles, as applied in the NSP, should guide and form the basis upon which the lower-level physical and land use plans are prepared. Further the principles should ensure sustainable, coordinated, and realistic development. They include the following:

- 1. Effective Public participation/engagement:** All plans shall be prepared in a participatory and consultative manner with relevant stakeholders and sectoral actors.
- 2. Urban containment/Compact cities:** Local plans shall strive to limit and control urban growth within the set urban boundaries to protect rich agricultural land, mitigate urban sprawl and reduce cost of infrastructural provision.
- 3. Livability:** The planning of urban areas shall enhance the livability index in the area of housing, environment, transportation, health, and social engagement. The urban areas must be economically viable, socially inclusive and ecologically sustainable.
- 4. Smart and green urban growth:** Plans shall promote sustainable use of energy, creation of green spaces, reduce the need for car travel, and promote use of local materials, support businesses, protection of heritage and creation of unique character.
- 5. Sustainable development:** Balancing social, economic and environmental dimensions of development and catering for current and future generations.
- 6. Promotion of ecological integrity:** Plans shall promote the protection and conservation of environmentally sensitive areas.
- 7. Promote public transportation:** Favor public transportation over private transport to ensure efficiency and functionality of urban places.
- 8. Balanced development:** Plans to ensure there/ is balanced development in the County to cure inequalities.

2 THE POLICY, LEGAL AND PLANNING FRAMEWORK FOR THE GUIDELINES

2.1 Introduction

Preparation of County Spatial Plans which is a mandate of Counties has been slow and, in some counties, has not begun at all. These guidelines are therefore a quick reference on how West Pokot can optimize land even in the absence of this plans.

Implementation of NSP since its approval and launch has been undertaken in an uncoordinated manner hence the guidelines will provide standardized approach for all counties.

The guidelines are also important as a tool for tracking and evaluating the implementation of NSP both at national and county levels.

2.2 Constitutional context

The formulation of these guidelines considered the Constitution of Kenya 2010 aspirations and Principles. Article 66 of the Constitution of Kenya 2010 gives the State powers to regulate use of any land and property in the interest of land use planning among others. The guidelines are therefore within and in response to the aspirations, values and principles as provided for in the constitution.

2.3 Policy Context

2.3.1 Sessional paper No. 12 of 2012 on The Kenya Vision 2030

Kenya Vision 2030 is the overarching national development framework which all plans should be aligned to. The preparation of all spatial plans should take cognizance of the aspirations, foundations and development concepts of the vision. The preparation of the first National Spatial Plan is identified in Kenya Vision 2030 as a flagship project and is regarded as one of the foundations for socio-economic transformation. Hence the need for linkage between national planning and county planning which can be achieved through mainstreaming NSPs into CSPs and other lower level plans by preparing NSP county specific guidelines to implement the NSP at lower levels.

2.3.2 Sessional paper No. 1 of 2017 on National Land Use Policy

The policy was formulated to address the various challenges related to land use and ensure efficient, productive and sustainable use of land. The main goal of the policy is to provide legal, administrative, institutional and technological framework for optimal utilization and productivity of land related resources in a sustainable and desirable manner at national, county and community levels.

The Policy is premised on the philosophy of economic productivity, social responsibility, environmental sustainability and cultural conservation. The policy is applicable in the county to address the land subdivision into uneconomical parcels making the agricultural sector in the county challenging.

2.4 Legal Context

Various Acts of Parliament are in place to provide the legal framework for the implementation of the mandate provided for in Article 66 of the Constitution. The Physical and Land Use Planning Act, 2019, The Urban Areas and Cities (Amendment) Act, 2019, County Governments Act No. 17 of 2012, The Land Act No. 6 of 2012, National Land Commission Act No. 5 of 2012 among others. The NSP County specific guidelines are prepared in this context and meets this criterion.

2.4.1 The Physical and Land Use Planning Act, 2019

This is the overarching statute that provides for formulation of both national and county physical and land use planning policies, guidelines and standards. The Act further provides for administration, types, content, process and approval of the various types of Physical and Land Use Development Plans.

2.4.2 County Governments Act, 2012

This statute mandates County Governments to carry out the planning function at the county level. The guidelines enhance the capacity to prepare the various county level plans that meet the recommended quality and standards.

2.4.3 The Urban Areas and Cities (Amendment) Act, 2019

The statute provides for classification of urban areas and cities, their governance and management, and for integrated development planning. The guidelines are a basis for preparation of these lower-level plans.

2.4.4 Environmental Management and Coordination (Amendment) Act, 2015

The Act provides for the establishment of an appropriate legal and institutional framework for the management of the environment as well as guidelines relating to environmental management and prevention or abatement of environmental degradation. The guidelines take cognizance of this Act and will be implemented within the framework.

2.4.5 National Land Commission Act, 2012

The Act mandates the National Land Commission with the management and administration of public land on behalf of the National and County Governments and to monitor and oversight physical and lands use planning in the country. The guidelines fall within the ambit of this statute and will facilitate their oversight responsibilities.

2.5 Planning Context

2.5.1 National Spatial Plan (NSP)

The National Spatial Plan (NSP) covers the whole country encompassing the exclusive economic zone. The NSP outlines policies and strategies geared towards influencing desired future distribution and organization of human activity outlined in Vision 2030 and sectoral policies and plans. It aims at achieving economic efficiency and balanced development. The various County Spatial Plans should be aligned to the policies outlined in the NSP as demonstrated in Figure 2 below.



Figure 2: Policy focus of the NSP

Sources: NSP 2015-2045

To actualize the NSP a comprehensive implementation strategy has been proposed that embraces a multiplicity of actors including National Government Ministries, Departments and Agencies, County Governments and the National Land Commission. The strategy proposes the establishment of the following institutions as key in the implementation of the Plan; The National Physical Planning Council, the National Technical Committee and the County Physical Planning Committee.

2.5.2 NSP linkage to other plans

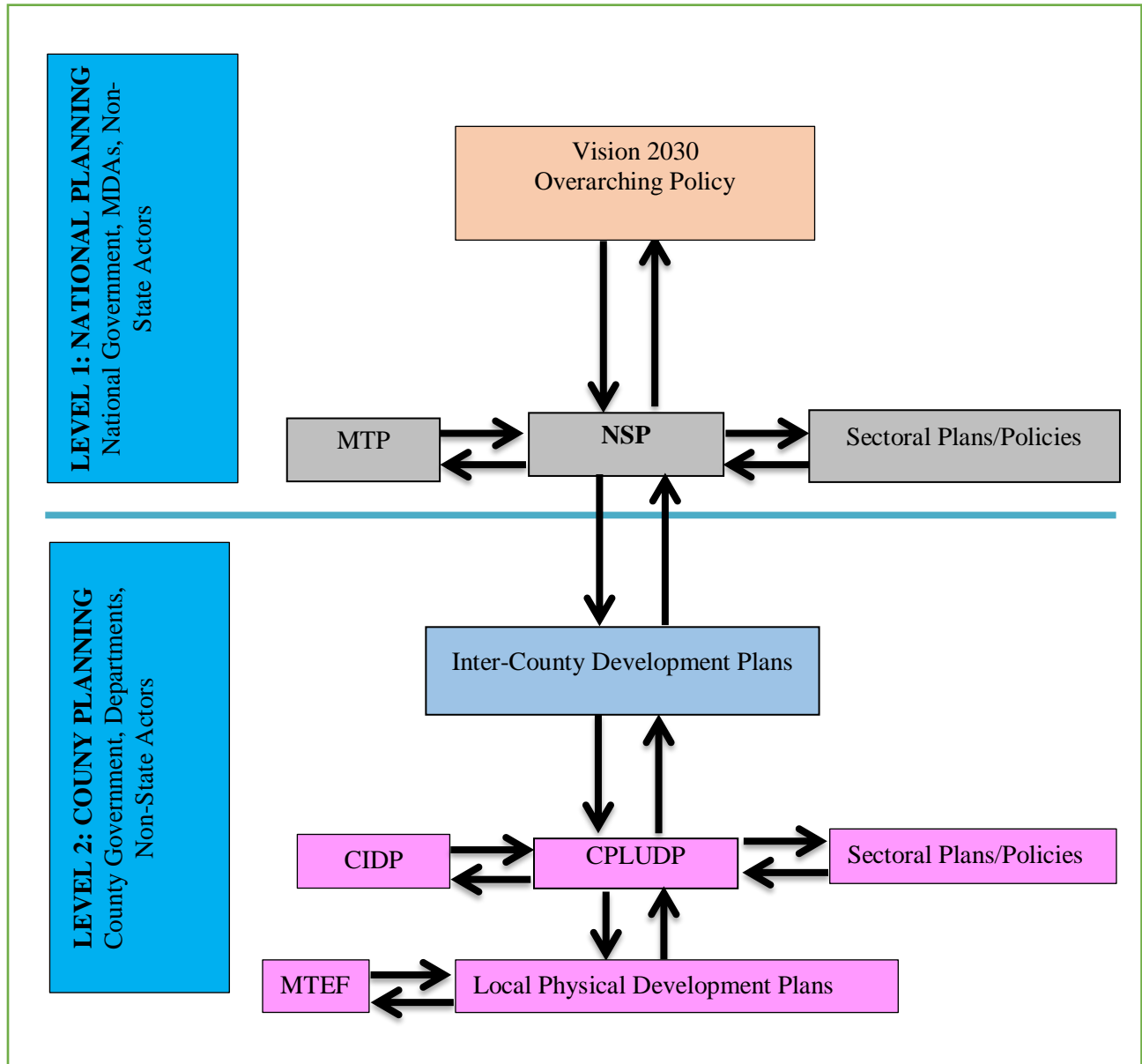
The linkage of the National Spatial Plan (NSP) to county and other lower-level plans is key to realization of its aspirations and the successful actualization of these plans. The NSP provides a spatial framework to ground the Vision 2030 flagships projects and form a basis for coordination of County policies, strategies, measures and plans.

Inter County and County plans take into considerations the policies, measures and strategies of the NSP and implements them actualizing its aspirations.

County Physical and Land Use Development Plans provide a framework where the CIDP draws its programs and projects. The implementation of the CIDP in turn leads to realization of the objectives of the County Physical and Land Use Development Plan.

DRAFT

Figure 3: NSP Linkage to other plans



Source: The National Spatial Plan, 2015-2045

3 COUNTY PROFILE

3.1 Overview

This chapter discusses a set of relevant information about West Pokot County. It provides information on the location, size, bio-physical features, socioeconomic status and looks at the comparative advantage of West Pokot County as compared to the other Counties in Kenya.

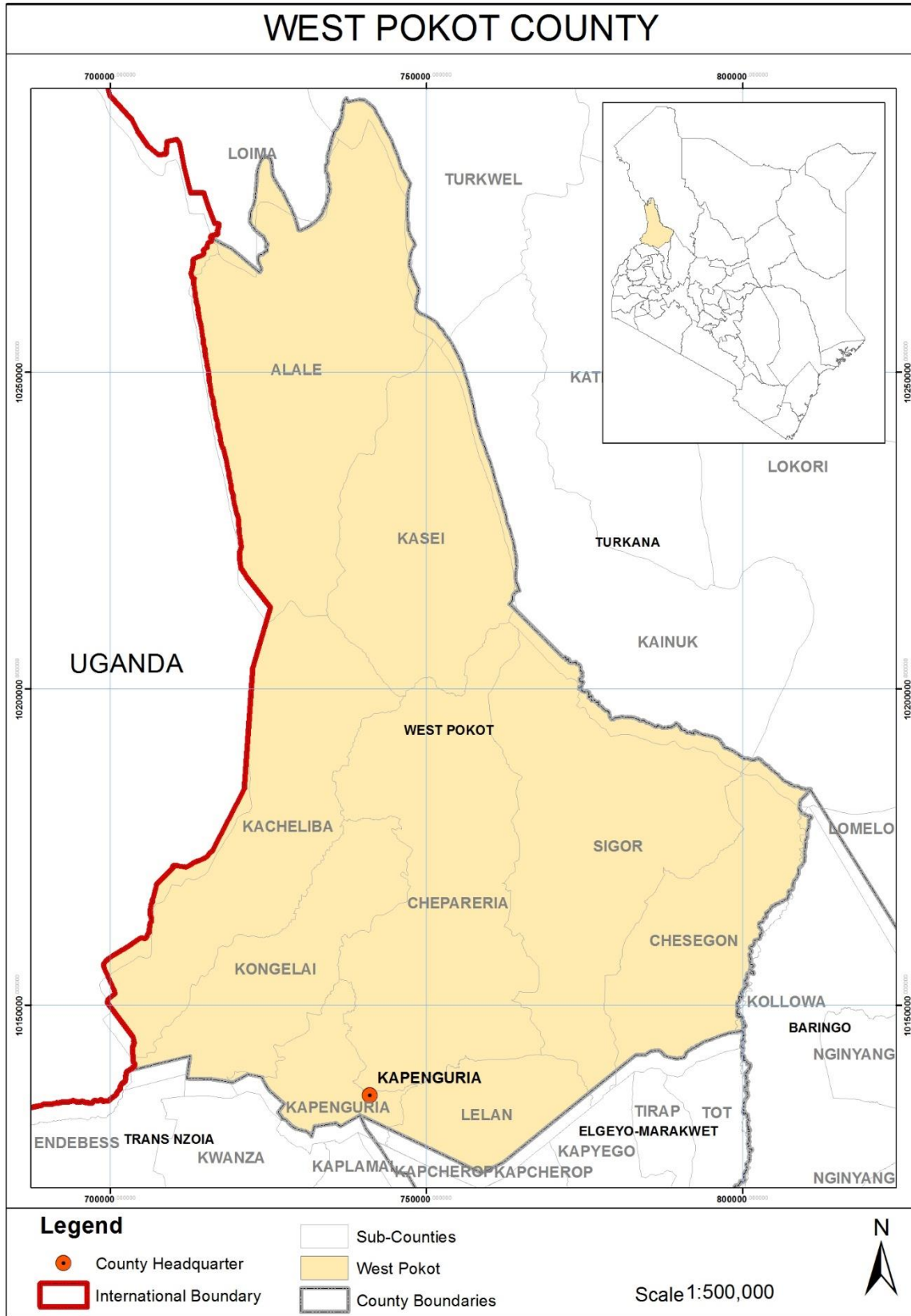
3.2 Location Context

West Pokot County is situated in the North Rift along Kenya's Western boundary with Uganda border. Its capital and largest town is Kapenguria. The county covers an area of approximately 9,169.4 KM² and stretches a distance of 132 kilometers from North to South. It is bordered Turkana County to the North, Baringo County to the East, Elgeyo Marakwet County to the Southeast and Trans Nzoia County to the South.

The County lies within Longitudes 34° 47' and 35° 49' East and Latitude 1° and 2° North and covers an area of approximately 9,169.4 km².

Administratively, the county is West Pokot has four (4) sub counties, 65 locations and 224 sub locations. The political units within the county are four (4) constituencies divided into twenty (20) wards.

Map 1: Location of West Pokot County



Source: Department of Physical Planning, 2022

3.3 Bio-Physical Context

3.3.1 Topography

There are dry plains, with an altitude of less than 900 m above sea level on the northern and north eastern parts. On the southeastern part are Cherangani Hills with an altitude of 3,370 m above sea level. Landscapes associated with this range of altitude include spectacular escarpments of more than 700 m. The high altitude areas have high agricultural potential while medium altitude areas lie between 1,500 m and 2,100 m above sea level and receive low rainfall in addition to being predominantly pastoral land. The low altitude areas include Alale, Kacheliba, Kongelai, Masol and parts of Sigor. These areas are prone to soil erosion due to flash floods. The main forests in the county are found in Cherangani Hills.

3.3.2 Water Resources

The main rivers in the county are Suam, Kerio, Weiwei and Muruny. Cherangani Hills are the main source of Muruny and Weiwei rivers, while Mt Elgon is the main source of river Suam. River Muruny, Kerio and Weiwei drain northwards into Lake Turkana, while other small rivers join and drain into River Nzoia which in turn drains into Lake Victoria. River Suam drains into Turkwel dam that generates hydro-electric power

3.3.3 Rainfall

The county has a bimodal type of rainfall. The long rains fall between April and August while the short rains fall between October and February. There is, however, great variation in the total amount and distribution of the rainfall received in the county. The lowlands receive 600 mm per annum while the highlands receive 1,600 mm per annum.

3.3.4 Temperature

The county also experiences great variations in temperature with the lowlands experiencing temperatures of up to 30⁰ C and the highlands experiencing moderate temperatures of 15⁰ C.

3.3.5 Land and Land Use Patterns

Land is the most important resource from which the county generates goods and services for the people. The county economy is primarily agro-based where 60% of the population derive its livelihood directly from land. Land is classified into various agro-climatic zones which determine the suitability of an area for a particular land use. West Pokot is classified as a high potential zone. Presently, existing land uses can largely be classified into the following categories;

- i. Agricultural
- ii. Built up areas
- iii. Conservation

The spread of these uses is uneven across the county due to variations in climatic elements such as temperature, rainfall, humidity, slope, and other physical features. Nevertheless, changes in land use patterns have been observed in many parts of the county. The main reasons for changes in land use patterns include;

- i. Increasing population
- ii. Rising demand for food and other cash crops
- iii. Increasing urbanization
- iv. Rising standards of living

3.4 Socio-Economic Background

3.4.1 Demography

According to the 2019 Kenya Population and Housing Census, West Pokot had a population of 621,226. The population is estimated to increase to 1,373,968 in 2045 at the end of the NSP period at the growth rate of 3.1.

Year	2019	2020		2025		2030		2035		2040		2045	
Population size	621,226	640,485		746,110		869,153		1,012,488		1,179,460		1,373,968	
		M	F	M	F	M	F	M	F	M	F	M	F
		316,531	323,954	368,731	377,379	429,540	439,613	500,377	512,111	582,895	596,565	679,022	694,946
Households	200,395	206,608		240,680		280,372		326,609		380,471		443,215	
Area	9,169.4	9,169.4		9,169.4		9,169.4		9,169.4		9,169.4		9,169.4	
Density	68	70		81		95		110		129		150	

3.4.2 Agriculture

Agriculture contributes a substantial amount of export earnings to the economy providing the much-needed foreign exchange. The potential components of agriculture vary within the rural areas such as crops, livestock and forestry which have been either under-utilized or not utilized. The main food crops produced include maize, beans, sorghum, finger millet, green grams, Irish potatoes, sweet potatoes and bananas. The farmers also grow horticultural crops which include fruits (mangoes, pawpaw, oranges, tree tomato and passion fruit) and vegetables both exotic and local (onions, cabbages, kales, pumpkins, sucha, cowpeas, saga, peas and carrots among others). The fruits and vegetables contribute immensely to food security as farmers use it for food as well as generate income to the households. However, some of these agriculturally potential areas are experiencing increased pressure by urban sprawl. There has also been increased subdivision of the rich agricultural land into small uneconomic units. All these among others have contributed to the reduced production.

3.4.3 Physical Infrastructure

Infrastructure is key to the achievement of the National Spatial Plan objectives of global competitiveness, regional balance and optimal utilization of land and other resources. West Pokot has fairly developed infrastructure including transport, physical and social infrastructure. Which have a high potential of economically empowering its People and attracting private investors if well maintained. The sector faces problems regarding poor connection, low coverage, unreliability, high costs, skewed distribution and low/surpassed design. To rectify this situation clear indicative policy, strategies and measures have to be developed and implemented to achieve overall efficiency

3.4.4 Transportation

The road network in the County is predominantly earth and gravel surface which makes up 87 percent of the road network. Rugged and hilly terrain within the county poses a challenge in road connectivity. The county has no rail network, ports and airports. The airstrips are completely inactive.

3.4.5 Public Utilities

To achieve a spatial and balanced regional development and meet demands of a growing population, there is need to develop and enhance economic infrastructure such as water services, waste management, energy and ICT to provide the foundation for economic development.

3.5 County's Comparative Advantage

3.5.1 Agriculture and Irrigation Potential:

The county total irrigation potential is estimated at 10,000 ha of which 1,800 ha is currently under irrigation. The total acreage for crops farms in the County is 44,102ha. This consists of approximately 40,797 Ha of food crops, 2,785 Ha of horticultural crops and 520 Ha under cash crops.

3.5.2 Ranching:

There are no commercial ranches in the county. Group ranches have become dormant and some currently undergoing sub-division into individual parcels

3.5.3 Apiculture:

Bee-keeping is an old practice among the West Pokot residents. Livestock department has continued to promote apiculture with emphasis on use of modern hives and equipment. There are about 149,478 bee hives.

3.5.4 Mineral and Oil potential:

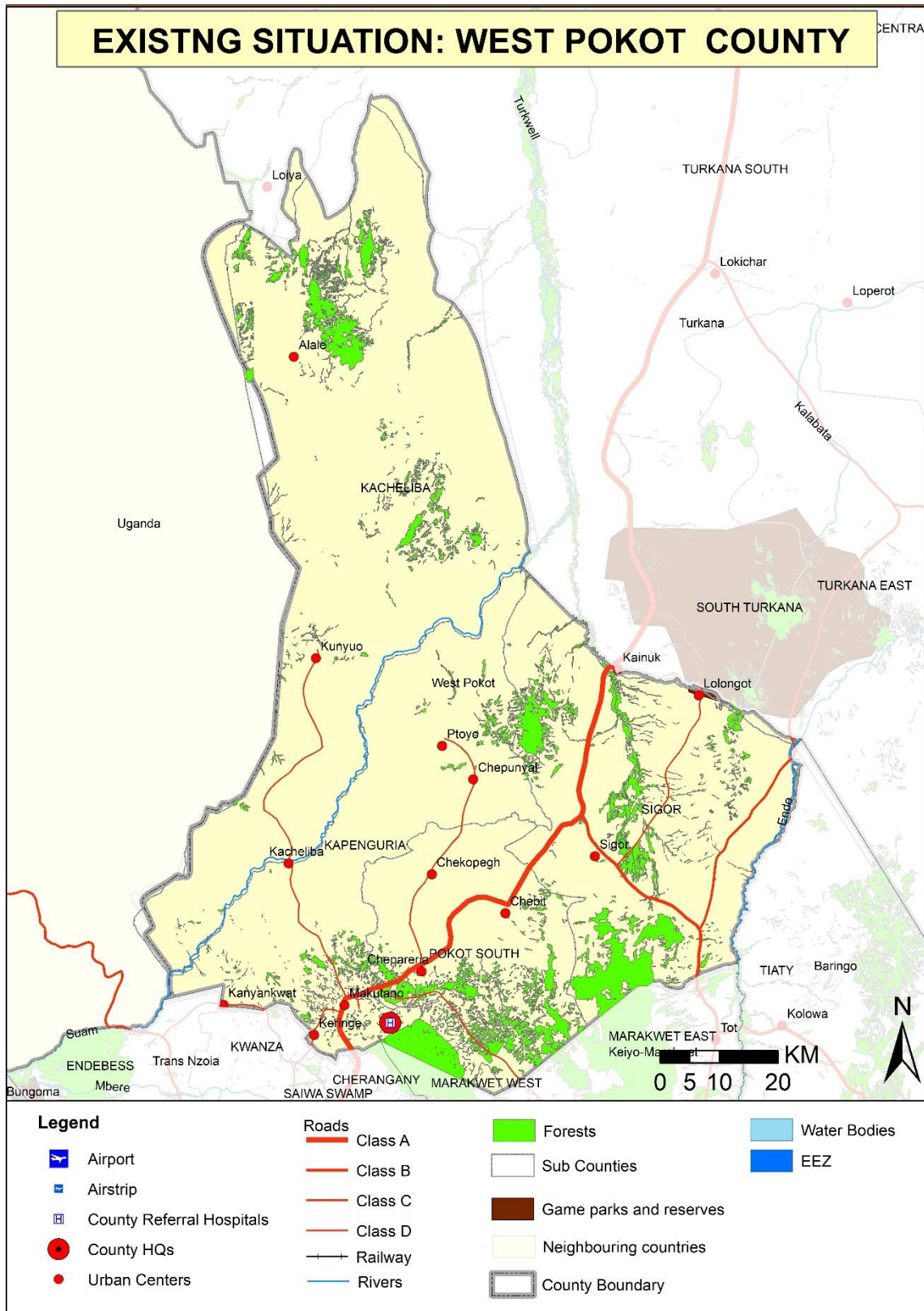
The county mineral potentials remain untapped. The following minerals are unexploited: limestone, gold, and ruby. Massive limestone deposits are found in Sebit, Ortum, Muino, and Alale. The County has limited gold deposits along river Muruny, Seker and parts of Alale, limestone deposits in Sebit, Ortum, Muino and parts of Alale. Sand harvesting is carried out in most parts of the county but is mainly in Kongelai Division.

3.5.5 Tourism Potential:

The tourist attraction sites include (Nasolot Game reserve), scenic sites, escarpments (Marich escarpment, Kaisagat viewpoint, Mtelo and Koh hills), ecotourism and Turkwel Dam remain untapped. Others tourism attractions include the rich Pokot Culture and

artefacts in Kapenguria museum, curio shops and wildlife. The County is a proud home of the infamous "Kapenguria Six" Cells that is found in Kapenguria Museum.

DRAFT



Source: State Department of Physical Planning, 2022

4 DEVELOPMENT STRATEGIES AND POLICY GUIDELINES FOR WEST POKOT COUNTY

4.1 County Specific Issues and Development Strategies

This section provides strategies for spatial growth and development of the County by addressing the factors that prevent the County from achieving the intended development goals and objectives.

The development strategies aim at managing the overall development impacts, optimizing use of natural resources, creating a balanced County and transforming rural areas. Specifically, the development strategies have been proposed to address the following aspects of the County's development agenda:

- Managing the national competitiveness
- Optimal use of land and other resources
- Promoting balanced Intra- County development
- Rural development in the county
- Urbanization

The following are detailed NSP sector-specific issues and strategies that apply to West Pokot County

Strategy 1: Enhancing National Competitiveness

Opportunities	Constraints	Strategies
<ul style="list-style-type: none"> ✓ Choice destination for investors and speculators ✓ Member of Frontier Counties Development Council ✓ Potential for green energy due to its proximity to Lake Turkana Wind Power Project ✓ Member of North Rift Economic Block (NOREB) to spur economic development within the region and to foster peaceful co-existence ✓ Gazetted forests, wildlife conservancies and mountainous species ✓ The County is rich in minerals, fertile soils, livestock production potential and tourism related activities 	<ul style="list-style-type: none"> ✓ Inefficient transport infrastructure ✓ Over reliance in traditional sources of energy ✓ Insecurity ✓ Inadequate knowledge-based workers ✓ Inadequate tourism support infrastructure. ✓ Disparity in access ICT Infrastructure 	<ul style="list-style-type: none"> ✓ Sensitize and invest in transport infrastructure development ✓ Harness the renewable and green energy sources to increase the energy capacity and reduce the cost ✓ Promote and Invest in Security measure ✓ Encourage locations of resource-based industries where resources are located ✓ Continued investment and improvement of Educational Infrastructure i.e TVTs in should fully participate in the affairs of the bloc. ✓ Strengthen the tourism service industries to leverage on comparative advantages ✓ Encourage the emergence of ICT locations and research-oriented institutions in the county ✓

Strategy 2: Optimizing Land and Natural Resources

Sector: Land Capability Transition area with ability to support both livestock and crop farming)		
Opportunities	Constraints	Strategies
<ul style="list-style-type: none"> ✓ Abundant land resource for development ✓ Change in land use patterns 	<ul style="list-style-type: none"> ✓ Skewed development patterns ✓ Unsustainable land use practices 	<ul style="list-style-type: none"> ✓ Formulate policies to tap the capability and potentials of the county

✓ Livestock and agriculture potential	✓ Communal land tenure system leading to insecurity of tenure	
Sector: Agriculture		
Opportunities	Constraints	Strategies
<ul style="list-style-type: none"> ✓ Ability to support large scale livestock production ✓ Irrigation potential ✓ Apiculture potential ✓ Increase in the number of conservancies ✓ Location of a National Cereals and Produce Board in Kapenguria as a main storage facility 	<ul style="list-style-type: none"> ✓ Erratic and unpredictable rainfall patterns ✓ Climate change leading to drought, floods, high temperatures, land degradation ✓ Livestock diseases ✓ Soil degradation and erosion ✓ Increase in pressure on grazing land ✓ Food and nutrition insecurity ✓ Cattle rustling and banditry ✓ Poor and dilapidated transport system connecting the areas 	<ul style="list-style-type: none"> ✓ Exploit/harness potential water resources (underground, surface and rainwater) ✓ Establish the land carrying capacity for livestock ✓ Encourage community ranching to replace pastoralism ✓ Encourage dry land farming methods and plant drought resistant crops ✓ Provide subsidies to promote the use of appropriate farm inputs and technology ✓ Transportation infrastructure in agricultural areas should be improved ✓ Agricultural support infrastructure should be provided to match the function
Sector: Environment (Conservation Area & Protection Area)		
Opportunities	Constraints	Strategies
<ul style="list-style-type: none"> ✓ High potential for ground water harvesting in some areas ✓ Existing environmental policies and regulations ✓ Diverse biodiversity ✓ Presence of various institutions dealing with conservation issues in the County 	<ul style="list-style-type: none"> ✓ Human settlement encroachment to environmental sensitive areas ✓ Charcoal burning ✓ Haphazard sand harvesting ✓ Overstocking ✓ Soil erosion caused by strong winds and overstocking ✓ Loss of wetland ecosystems ✓ Effects of climate change ✓ Sand and Dust storms leads to poor visibility 	<ul style="list-style-type: none"> ✓ Enforce Development Control-development not permitted in Conservation areas except for Eco-Tourism and Research Purposes. ✓ Enforcement of Environmental Act ✓ Encourage and adopt Modern livestock Farming methods ✓ Strict regulations on Environmental sensitive areas i.e., Wetlands ✓ Provide requisite livestock infrastructure e.g., abattoirs, markets

	<ul style="list-style-type: none"> ✓ inadequate of enforcement of Environmental Legislations 	<ul style="list-style-type: none"> ✓ Sensitize the public in matters of carrying capacity ✓ Exploit tourism potential areas ✓ Intensify forest cover through afforestation, reafforestation and agroforestry of the existing forests
Sector: Natural Resource		
Opportunities	Constraints	Strategies
<ul style="list-style-type: none"> ✓ Green Energy: Solar and Wind- Favorable wind speeds to support production of power ✓ Presence of gazetted and ungazetted forests ie Cherangani Hills and Kamatira forest ✓ Presence of Wildlife conservation areas are in Masol, Nasolot, Ompolion and Orwa areas ✓ Existence of Mineral Resources include limestone, gold, ruby and oil reserves ✓ Presence of permanent rivers i.e. R.Turkwel and R.Suam 	<ul style="list-style-type: none"> ✓ High costs of exploiting available natural resources e.g., Wind and Solar ✓ Inadequate technology and exploitation infrastructure ✓ Under-utilization of existing resources i.e. minerals ✓ Soil erosion ✓ Loss of forest cover ✓ Invasive tree species ✓ Inadequate geological information on the existence of the minerals and their commercial viability 	<ul style="list-style-type: none"> ✓ Invest in appropriate technology and infrastructure for resource utilization ✓ Optimal utilization of the available resource potential ✓ Undertake further exploration of the available natural resources ✓ Formulate a policy pertaining to the use and protection of the parks and conservancies ✓ Regulate the exploitation of underground water potential ✓ Intensify forest cover through afforestation, reafforestation and agroforestry of the existing forests
Sector: Industrial		
Opportunities	Constraints	Strategies
<ul style="list-style-type: none"> ✓ High potential for a number of mineral deposits 	<ul style="list-style-type: none"> ✓ Inadequate information on potential mining opportunities ✓ Low adoption of technology 	<ul style="list-style-type: none"> ✓ Need for carrying out geological surveys to establish true quantity of mineral deposits

<ul style="list-style-type: none"> ✓ Huge potential for livestock product-based industries ✓ Partnership with Livestock Marketing Association in Archers Post to run a sales yard ✓ Potential for pyrethrum farming has attracted support from Pyrethrum Processing Company of Kenya 	<ul style="list-style-type: none"> ✓ Inadequate transport infrastructure ✓ Lack of manufacturing industries for livestock products ✓ Price fluctuations of Livestock products ✓ Poor transport linkages to the markets ✓ Lack of value addition support infrastructures and services 	<ul style="list-style-type: none"> ✓ Formulate policy that creates an enabling environment to attract investments in mineral exploration ✓ Invest in exploration of potential mineral reserves ✓ Provide appropriate technology to enhance value addition ✓ Provide adequate, supportive transport and infrastructure ✓ Diversify energy production sources to reduce costs of production and enhance its reliability ✓ Promote the formation of cooperatives and Saccos to advance marketing ✓ Promote assertive marketing campaigns for products both domestically and internationally
Sector: Tourism (Northern Circuit)		
Opportunities	Constraints	Strategies
<ul style="list-style-type: none"> ✓ Tourist attraction sites in the County include Nasolot game reserve, Kapenguria Museum, Marich escarpments, ✓ High potential for Cultural Tourism includes the rich Pokot culture and artefacts in Kapenguria museum, curio shops and wildlife 	<ul style="list-style-type: none"> ✓ Untapped tourism potential such as cultural tourism ✓ Underdeveloped tourism sites and products ✓ Poor/inadequate transport and infrastructural facilities ✓ Human-Wildlife Conflict ✓ Poaching ✓ Limited safety and security concerns leading to negative travel advice ✓ Poor marketing strategies to promote tourism 	<ul style="list-style-type: none"> ✓ Provision of appropriate infrastructure to link the county to other circuits ✓ Revive and Rehabilitate airstrips connecting the circuits ✓ Identify and invest of under-utilized sites ✓ Diversify the tourism products based on potentials i.e., Cultural Tourism ✓ Strict enforcement of the existing regulations for safeguarding protection areas ✓ Enhance security in tourism potential areas

	<ul style="list-style-type: none"> ✓ Weak integration of ICT in the development and management of the tourism value chain 	<ul style="list-style-type: none"> ✓ Invest in ICT infrastructure and capitalize on online marketing ✓ Promote domestic tourism by providing incentives and subsidies ✓ Increase our tourism market segment 	
Sector: Transport			
Opportunities	Constraints	Strategies	
<ul style="list-style-type: none"> ✓ Implementation of the LAPSET corridor- ✓ Rapid urbanization ✓ Increased trade and investments ✓ Opening up of the undeveloped areas ✓ Existence of Kishaunet airstrip in Kapenguria towns 	<ul style="list-style-type: none"> ✓ Most Intra- County Roads are in poor condition. ✓ Transport system not fully integrated ✓ Dilapidated Airstrip ✓ Lack of Non-Motorized and Intermediate Means of Transport (NMIMT) ✓ Missing transportation links ✓ Inadequate or lack of terminal facilities ✓ Increase financial resources for road construction and maintenance ✓ Encroachment and/ or grabbing of road reserves 	<ul style="list-style-type: none"> ✓ Upgrading of all the intra-county roads ✓ Integrate transport corridor planning ✓ Improve and expand the existing airstrips ✓ Enforce development control measures within and around airstrips ✓ Incorporate Bus Rapid Transit within the urban areas ✓ Formulate regulations and guidelines to control development along transport corridors ✓ Connect all the county headquarters with proper transportation system ✓ Repossess and revert all illegally acquired land for roads infrastructure ✓ Preserve and secure adequate land for future transport and other related infrastructural Development 	
Sector: Public Utilities			
Sub-Sector	Opportunities	Constraints	Strategies
Water and Sanitation	<ul style="list-style-type: none"> ✓ Financial and technical support from the government and non-governmental 	<ul style="list-style-type: none"> ✓ Inadequate accessibility to portable water points ✓ Encroachment of human activities into catchment areas 	<ul style="list-style-type: none"> ✓ Expansion of existing water supplies in the county ✓ Protection of catchment areas

	<p>organizations in provision of water and sanitation facilities</p> <ul style="list-style-type: none"> ✓ Existing policies on waste management 	<ul style="list-style-type: none"> ✓ Prevalence of water-borne diseases ✓ Inadequate sanitation facilities in urban and rural areas ✓ Declining of water levels in boreholes, wells and springs due to climate change 	<ul style="list-style-type: none"> ✓ Investments in water harvesting technologies and storage facilities ✓ Exploit underground water to increase the total supply of water ✓ Appropriate sanitation infrastructure including collection, disposal and treatment system be developed in all urban area ✓ Promote the reduce, reuse and recycling guidelines
Sector: Infrastructure (Physical and Social)			
Sub-Sector	Opportunities	Constraints	Strategies
Energy	<ul style="list-style-type: none"> ✓ Availability of hydroelectric power - Turkwel Dam ✓ Availability of alternative energy sources- green energy such as solar, biomass and Wind 	<ul style="list-style-type: none"> ✓ Lack of proper assessment and research on exploitation of green energy ✓ Under exploitation of energy resources ✓ Over-reliance on unsustainable energy sources such as wood fuel ✓ Poor development of power infrastructure 	<ul style="list-style-type: none"> ✓ Renewable energy sources be harnessed, transmitted and distributed (Solar and Biomass) ✓ Formulate a policy to guide and regulate the exploitation use of potential green energy sources by developing standards and promoting research and planning ✓ Use of most appropriate energy consuming equipment to ensure efficient and productive use of energy ✓ Advocate for upgrading of electricity
ICT	<ul style="list-style-type: none"> ✓ Increased demand in technological services ✓ Development of fiber optic infrastructure and network ✓ Existing ICT systems 	<ul style="list-style-type: none"> ✓ Disparity in access to internet services in both urban and rural areas ✓ Poor connection infrastructure ✓ High installation cost 	<ul style="list-style-type: none"> ✓ Mainstream ICT at all sectors to promote service, ✓ Expand the fiber optic network to all urban areas to increase the coverage and data connectivity

			and increase access for rural population
Education	<ul style="list-style-type: none"> ✓ Existing educational institutions at primary, secondary and tertiary levels ✓ Government subsidies in the education system 	<ul style="list-style-type: none"> ✓ Low enrolment in technical, vocational education and training ✓ High levels of poverty ✓ Poor infrastructure in educational facilities ✓ Little emphasis on innovation and research in courses offered ✓ Insufficient govt. monitoring of content offered by universities and colleges ✓ Skewed distribution of institutions in favor of urban areas ✓ Budgetary constraints limiting establishment and expansion ✓ Negative cultural practices, religious and traditional beliefs ✓ Insecurity 	<ul style="list-style-type: none"> ✓ Expand the capacity of existing educational institutions ✓ Encourage specialization institutions based on regional potentials ✓ Encourage the active fusion of innovation and research into coursework taught the institutions. ✓ Establish more institutions in marginalized areas to promote regional balance ✓ Renovation and upgrading of existing infrastructure in the institutions ✓ Discourage traditional and cultural taboos discriminating against education based on gender ✓ Invest in security measures
Sports	<ul style="list-style-type: none"> ✓ Immense, untapped sporting talent ✓ Existence of many regional and national tournaments that need to be hosted in good quality stadia; sports tourism ✓ Availability of land for infrastructure development 	<ul style="list-style-type: none"> ✓ Poor management of existent infrastructure ✓ Skewed distribution ✓ Lack of proper repair and maintenance structures ✓ Little modernization and upgrade of sporting infrastructure ✓ Underutilization stemming from little promotion of sports as a potential income earner 	<ul style="list-style-type: none"> ✓ Address imbalances in distribution of sporting infrastructure ✓ Develop sound stadia repair, upgrade and maintenance policies ✓ Encourage private entities to take part in the development and management of sporting infrastructure ✓ Set up talent academies to harness sporting talent throughout the

	✓ Availability potential of sporting grounds stadium at Nasolot, Turkwel gorge		country and increase utilization of the infrastructure
--	--	--	--

Strategy 3: Balanced Regional Development

Opportunities	Constraints	Strategies
<ul style="list-style-type: none"> ✓ Existing and enabling policy framework i.e. Vision 2030 and county policies including the CIDP ✓ Development Strategy for Northern Kenya and other Arid Lands ✓ Natural potentials include: - mining, industry, tourism, green energy generation, irrigation, livestock and agro-based industries. ✓ Classified as a medium potential region due to its high potential for agriculture through irrigation and livestock keeping. ✓ Devolution 	<ul style="list-style-type: none"> ✓ Under-exploitation of the natural resource potential i.e. solar and wind energy ✓ Inadequate provision and access to infrastructural facilities ✓ Insecurity ✓ Inadequate geological information on the existence of minerals and their commercial viability ✓ Food and nutrition insecurity ✓ Regional disparities ✓ Inadequate utilization of knowledge and innovation 	<ul style="list-style-type: none"> • Establish economic zones in the region according to the potential of every • Encourage equitable exploitation and sound management of mineral resources • Promote investment in sustainable tourism including eco-tourism • Promote industrialization and value addition • Promote Irrigation activities for improved productivity in quantity and quality of yield within the potential regions Promote the Utilization of knowledge and innovation.

Strategy 4: Promoting Rural Development

Opportunities	Constraints	Strategies
<ul style="list-style-type: none"> ✓ Resource endowment in rural areas (agriculture, large-scale livestock production and tourism) ✓ Enabling policy framework to support rural development e.g. National Spatial Plan, National Land Use policy (NLUP) and Vision 2030 ✓ Human resource (both skilled and unskilled) ✓ Transitional area with poverty levels below 50-70% 	<ul style="list-style-type: none"> ✓ Weak rural-urban linkages ✓ Insufficient and dilapidated infrastructure facilities and services ✓ Under exploitation of resources in rural areas ✓ The dispersed nature of the human settlements ✓ Slow adoption of technology ✓ Low productivity 	<ul style="list-style-type: none"> ✓ Develop appropriate transport and infrastructural facilities and services ✓ Promote rural industrialization which includes, rural tourism, mining and Agro-based industries ✓ Promote commercial and large-scale livestock production practices in the weak and transitional cluster of rural areas ✓ Provision of education and training services ✓ Adoption of modern technology ✓ Provision of extension services and incentives to the farmers ✓ Enhance the ASALs climate change adaptation and desertification mitigation ✓ Provide a spatial framework for harnessing natural wealth e.g. renewable energy, from both solar and wind ✓ Promote sustainable land uses that are capable of meeting the rangeland needs ✓ Promote urban containment to reduce effects of urban sprawl into agricultural and rangeland areas.

Strategy 5: Urbanization

Opportunities	Constraints	Strategies
<ul style="list-style-type: none"> ✓ Existing urban areas which include Kapenguria and Chepareria Sigor, Alale Ortum, Kacheliba Kabichbich among others ✓ Availability of land for expansion ✓ Existing polices and legislation 	<ul style="list-style-type: none"> ✓ Poor implementation of physical and land use development plans and planning policies ✓ Rapid urbanization and ribbon development ✓ Weak rural-urban linkages ✓ Deteriorating infrastructure ✓ Proliferation of informal settlements ✓ Gentrification ✓ Unbalanced distribution of urban centres ✓ Land and governance issues ✓ Inadequate political will and governance ✓ Weak enforcement of existing legislations ✓ Inefficient solid waste management services 	<ul style="list-style-type: none"> ✓ Enforce, harmonize and regularly review the existing legislative and regulatory instruments ✓ Promote the development of centers as per their potential and population as local, market, rural, urban centers and growth centers ✓ Create an enabling environment for commercial and industrial developers to activate potential development within the urban areas ✓ Provide alternative areas for development of urban centers ✓ Strengthen urban-rural linkages through provision of integrated transportation and communication system ✓ Plan and provide an integrated waste management system ✓ Strengthen Governance and harmonize sectoral policies, legislation and regulations

4.2 NATIONAL SPATIAL PLAN POLICY GUIDELINES AND MEASURES FOR WEST POKOT COUNTY

This section seeks to provide the spatial policy guidelines and measures aimed at promoting the achievements of the objectives of the National Spatial Plan using its guidelines. They aim at enhancing global and national competitiveness and economic efficiency, optimizing the use of land and natural resources, promoting regional balanced development and conservation of the environment.

These policies are supported by a wide range of measures which spell out the specific actions to be undertaken to actualize the policy intentions. The policies shall ensure that the County is nationally competitive as an investment destination, especially in emerging sectors such as the ICT. The policies will also be implemented by the County government's agencies responsible for planning and development control as well as the authorities responsible for land administration.

The following are the policies and measures specific to West Pokot County.

Table 3: NSP Policy guidelines and measures for the County

No	Thematic Area	Policy Guidelines	Measures
1.	Resource growth potential include: <ul style="list-style-type: none"> ✓ Agricultural (irrigated) potential ✓ Tourism and Culture ✓ Mineral resources ✓ Water resources ✓ Wildlife resources Policies	<ul style="list-style-type: none"> ✓ Enhanced agricultural and food production ✓ Investment in physical and social infrastructure ✓ Development of tourism infrastructure ✓ Mineral mapping and exploitation ✓ Environmental protection and conservation 	<ul style="list-style-type: none"> ✓ Provision of infrastructure to support value addition initiatives and human settlement ✓ Development and rehabilitation of key physical and social infrastructure ✓ Small and medium urban centres development include Chepereria, Sigor, Alale, and Kacheliba ✓ Conservation of water towers and resources in Cherangani Hills ✓ Rural development through provision of infrastructure, agricultural sector development and related economic activities ✓ Environmental protection

			✓ Conservation of wildlife and forest resources
2.	Enhancing National Competitiveness	Adoption of selective concentration in planning and location of urban based economic activities in all counties to leverage on national competitiveness	<ul style="list-style-type: none"> ✓ Exploit natural resources endowments within the County ✓ Concentrate urban based economic activities in selected urban areas Kapenguria, Chepereria, Sigor, Alale, and Kacheliba to spur economic development ✓ Prioritization in the preparation of physical and land use development plans to guide development within the county.
		The major urban areas shall be planned and provided with appropriate infrastructure to enhance efficiency and quality of life	<ul style="list-style-type: none"> ✓ Enhance the Livability Index for urban areas ✓ Improve the transport infrastructure ✓ Provide appropriate infrastructure in the form of reliable energy, water, sanitation and ICT
		Land and natural resources of the less developed areas shall be utilized optimally and sustainably	<ul style="list-style-type: none"> • Encourage the transformation from traditional farming and livestock keeping methods to modern practices • Identify and develop the tourism potential within the northern circuit • Explore and exploit the mineral, energy and water potentials • Provide transportation networks and other infrastructure
		The efficiency of the transportation network shall be enhanced to take advantage of the strategic location and position of the country	<ul style="list-style-type: none"> • Renew and modernize the existing northern corridor to spur economic development in the southern region and improve the linkages to East and Central African region • Enhance railway and road coverage and connectivity. Prepare Spatial development plans

		Enhanced cooperation in spatial and economic planning with member states of the East African Community (EAC) and the Common Markets of East and Southern Africa (COMESA)	<ul style="list-style-type: none"> • The planning of trans boundary resources (River Suam), transport corridors and infrastructure as well as border urban areas (such as Lokitanyala, Suaum) shall be undertaken jointly
3.	Modernizing Agriculture	Agro climatic zones IV, V and VI (rangelands) shall be developed and used optimally for large scale commercial production of livestock to support downstream processing of livestock products and promote balanced regional development	<ul style="list-style-type: none"> ✓ County spatial plans prepared by counties to guide and promote the development of large-scale livestock productions ✓ Prioritize provision of requisite infrastructure (Water pans, dams, cold storage facilities and laboratories) to support ranching ✓ Modernize livestock keeping through appropriate animal husbandry (high-yielding breeds, extension services and research and disease control), product processing and timely marketing ✓ Appropriate rangelands management practices shall be adopted including observance of carrying capacity, conservation of the natural vegetation and adaptation and mitigation against climate change and its impacts ✓ Early warning systems, prompt response and recovery systems shall be taken to cushion the county and make it more resilient to the perennial drought cycles

		The irrigation potential of the country shall be optimized by promoting investment in irrigation agriculture for high value crops	<ul style="list-style-type: none"> ✓ Existing irrigations schemes shall be rehabilitated and expanded e. g. Wei Wei Integrated Development Project ✓ Research shall be undertaken to identify the irrigation potential in all counties throughout the country
4.	Diversifying Tourism (Northern circuit)	Promote diversification of tourism	<ul style="list-style-type: none"> ✓ Plan and develop the circuit to offer; safari and wildlife, cultural and heritage, archeological and historical, filming ecotourism and adventure tourism products
		Appropriate Tourism support infrastructure and facilities shall be provided	<ul style="list-style-type: none"> ✓ Formulate planning regulations and standards to guide tourist specific infrastructure and facilities ✓ Upgrade the existing tourism facilities and Infrastructure ✓ Prepare and implement an integrated Tourism Transportation Master Plan ✓ Provide and upgrade the ICT infrastructure to support tourism
		Tourist attraction areas and sites shall be conserved and protected	<ul style="list-style-type: none"> ✓ Prepare subject plans for the wildlife migratory and dispersal corridors and wildlife habitat as a unit ✓ Prohibit the location of incompatible land use activities ✓ Strictly regulate developments within the tourist attraction sites ✓ Protect wildlife watering points
		Appropriate transport infrastructure shall be provided to link the different tourist circuits, attraction areas and sites	<ul style="list-style-type: none"> ✓ Prepare and implement an integrated Tourism Transportation Master Plan ✓ Upgrade the existing land transportation facilities ✓ Upgrade the air transportation facilities ✓ Encourage application of low carbon options in transport infrastructure

			<p>Governance of the tourism sector shall be enhanced</p> <ul style="list-style-type: none"> ✓ Prepare integrated spatial plans to guide development of the tourism sector ✓ Prepare and implement National Policies on land use, wildlife and tourism ✓ Enhance tourism dedicated security to the tourism sector ✓ Identify and map potential eco-tourism development sites ✓ Undertake eco-tourism awareness campaigns ✓ Develop standards for eco-tourism establishments
			<p>Spatial Development plans shall be prepared to guide implementation of the flagship projects the tourism sector</p> <ul style="list-style-type: none"> ✓ Prepare Samburu Resort City local physical development plans. ✓ Prepare Ecosystem area plans for all parks and reserves. ✓ Prepare plans for the cultural heritage sites
5.	Managing Settlements	Human	<p>The expected increase in population in urban areas shall be anticipated and accommodated particularly for the main growth areas</p> <ul style="list-style-type: none"> ✓ redeveloping existing housing areas ✓ Plan and designate land for new housing schemes ✓ Upgrade the existing and provide additional infrastructure and facilities to support housing development in the urban areas ✓ Formulate enabling local policy frameworks to support employment and income generation ✓ Locate industrial and service development activities with the global reach in the main urban areas ✓ Provide efficient transportation and quality infrastructure in human settlements to support industrial and service sectors. ✓ Promote adoption of technology and fiscal incentives and market support for the informal sector

	<p>Alternative urban areas shall be developed and supported to promote balanced regional development and spur growth</p>	<ul style="list-style-type: none"> ✓ Develop urban centres as intermediate centres between the rural and the principal towns ✓ Prepare local physical development plans to define the urban growth limits for the principal urban centres ✓ Enforce strict regulations and justifications on development control processes ✓ Intensify the supply of urban infrastructure within the area contained to make it attractive for investment
	<p>Rural growth centres shall be rationalized and supported to act as central places and settlements clustered to free the rich agricultural land</p>	<ul style="list-style-type: none"> ✓ Provide basic services such as extension services, health facilities, markets, sanitation, water, power and education ✓ Undertake sensitization and awareness campaigns on the need to conserve agricultural land ✓ Progressively link growth centres by means of secondary roads ✓ Promote sectors such as agriculture that have potential to stimulate rural development ✓ Incorporate disaster management and mitigation in planning of rural settlements
	<p>Human settlements shall be developed in line with environmental and natural resources conservation to improve living conditions</p>	<ul style="list-style-type: none"> ✓ Map out and prohibit development in environmental sensitive areas ✓ Plan and provide an integrated waste management system ✓ Deliberately provide adequate and functional open spaces in urban places ✓ Prescribe planning standards for open/green space on private development ✓ Encourage non-motorized transport (NMT) and re-introduction of public transport in urban centres
	<p>NSP advocates for the provision of an efficient,</p>	<ul style="list-style-type: none"> ✓ Integrate land use and transportation planning to encourage development patterns

		reliable and effective transport system for human settlements	<ul style="list-style-type: none"> ✓ Establish an efficient mass transit public transportation system for Samburu ✓ Establish an effective transport management system ✓ Improve the road conditions and expand the linkages to human settlements ✓ Integrate NMT with existing transport infrastructure ✓ Incorporate the concept of green energy in transport systems planning and redevelopment ✓ Prepare a transportation strategy for each urban area or city
		Improve the management and governance of Human Settlements in the urban areas	<ul style="list-style-type: none"> ✓ Build institutional capacities of the urban areas management boards ✓ Integrate technology in management of human settlements ✓ Coordinate and strengthen development control mechanisms ✓ Provide adequate human resource and improve their capacity in management of human settlements in the sectors ✓ Conduct research into migration trends to inform effective planning and provision of human settlements ✓ Enable public private partnerships in the provision of housing
		NSP shall advocate for upgrading of the existing settlements and forestalling of new informal settlements	<ul style="list-style-type: none"> ✓ Encourage redistribution of urban income through integrated development planning encompassing social, economic and physical factors ✓ Prepare Local Physical Development Plans for purpose of renewal and/or redevelopment of the informal settlement ✓ Formulate a housing policy that will focus on providing affordable and accessible housing

			<ul style="list-style-type: none"> ✓ Ease the process of issuance of ownership documents to the legal owners in order to encourage formal developments ✓ Enforce development control regulations and adherence to building code and standards ✓ Enhance coordination of donor agencies activities within informal settlements
		Peri-urban development shall be managed and controlled to contain urban growth within its limits and protect rural land uses	<ul style="list-style-type: none"> ✓ Formulate policy for urban containment and densification ✓ Formulate and implement planning legislation on peri urban planning and management ✓ Institute sanctions on idle land to encourage productive and sustainable land utilization ✓ Create green belt buffer zones to define the urban and peri-urban areas
6.	Conserving the Natural Environment	All environmentally sensitive areas shall be protected and utilized in a sustainable manner. (Wetland Ecosystems)	<ul style="list-style-type: none"> ✓ Prepare integrated wetland resource management plans ✓ Rehabilitate and restore the degraded wetlands and river banks
		All environmentally fragile areas shall be conserved and utilized in a sustainable manner (ASALs)	<ul style="list-style-type: none"> ✓ Develop and implement an Integrated Land Use (Development) Plan ✓ Promote integrated natural resource management ✓ Ensure application of Integrated Water Resources Management (IWRM) ✓ Mainstream dry land issues into all national development plans and policies ✓ Involve and empower communities in the management of ASAL ecosystems ✓ Gazette and manage emergency drought reserve areas

			<ul style="list-style-type: none"> ✓ Mainstream climate foresight and climate adaptation into planning ✓ Explore opportunities and develop appropriate mechanisms through ✓ Protect and increase forest cover, riverine vegetation and critical water catchment areas in the ASALs
		All environmentally sensitive areas shall be protected and utilized in a sustainable manner (Mountain Ecosystems)	<ul style="list-style-type: none"> ✓ Develop and implement strategies and action plans for sustainable management ✓ Promote integrated watershed management and alternative livelihood opportunities ✓ Adopt appropriate land use planning and watershed management practices for sustainable development ✓ Ensure all water catchment areas are zoned and managed as protected areas
		All government agencies shall integrate environmental concerns in policy formulation, resource planning and development processes	<ul style="list-style-type: none"> ✓ Waste Management and Pollution Control ✓ Encourage the participation of local communities in conservation and management of the environment ✓ Jointly prepare and implement harmonized inter-county plans ✓ Devise means to measure the value of unexploited natural resources ✓ Implement the National Climate Change Strategy and the National Climate Change Action plan ✓ Strengthen Environmental Governance
		Community participation shall be mainstreamed in the protection and conservation of natural resources	<ul style="list-style-type: none"> ✓ Sensitize communities living around the natural resources on the need for conservation of the resources ✓ Develop mechanisms for sharing benefits accruing from the natural resources by the conservation agencies in consultation with the local communities ✓ Identify and map all disaster-prone areas for

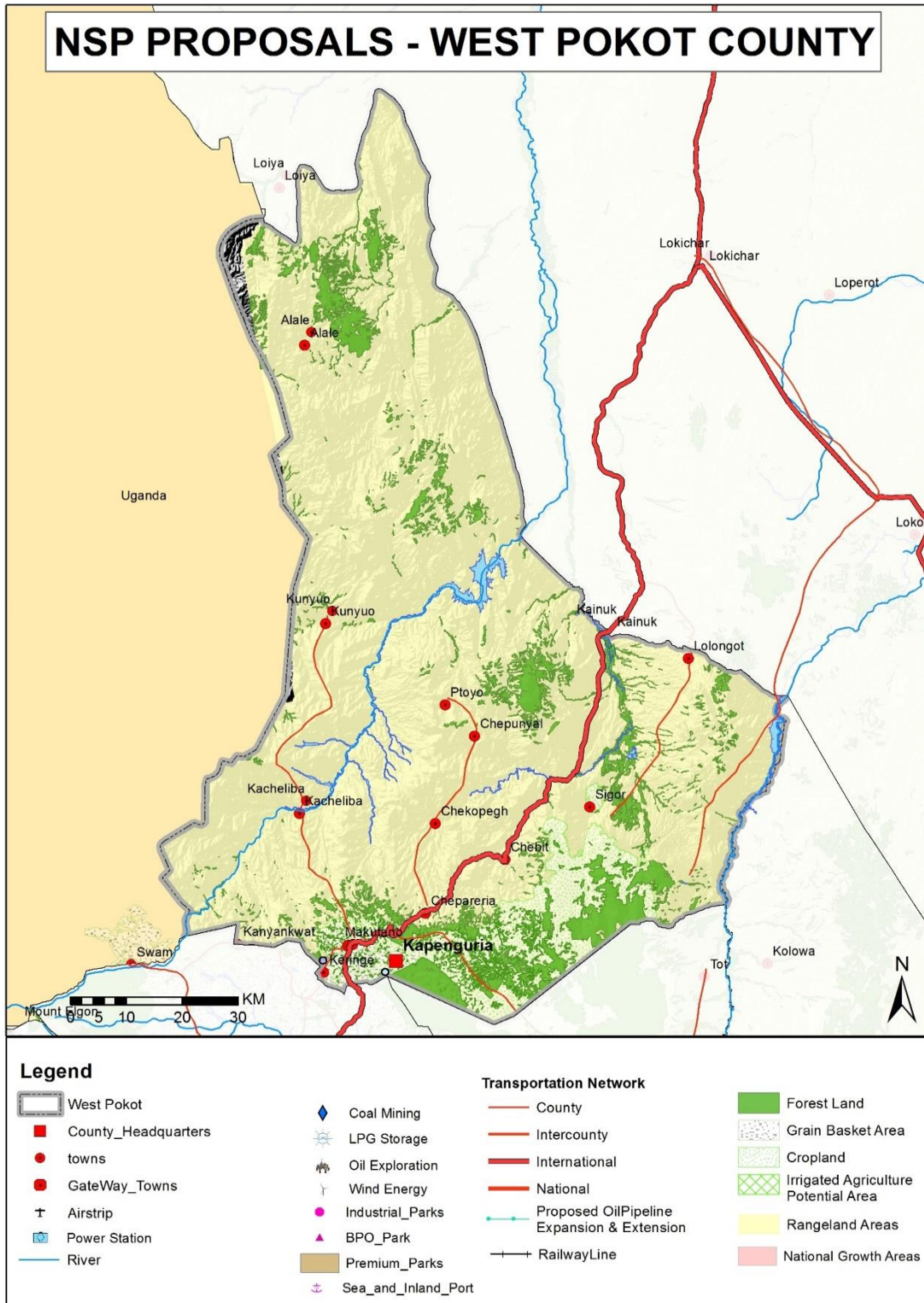
			sustainable management
		National and County Physical Planning departments shall mainstream climate change in the planning processes	<ul style="list-style-type: none"> ✓ Build and strengthen research capacity on climate change and related environmental issues ✓ Promote water conservation including reversal of degradation of the main water towers and rehabilitation and restoration of all water catchments ✓ Promoting growing of drought tolerant traditional high value crops ✓ Supporting sustainable livelihoods in drought prone ASALs ✓ Develop and promote the use of green energy
7.	Integrating the National Transportation Network	An integrated and functional transport system for the national and urban areas shall be developed	<p><i>Rail Transport:</i></p> <ul style="list-style-type: none"> ✓ Expand and develop the railway network from Kitale to Lodwar via Kapenguria to optimize on land use, limit pollution, reduce road degradation and improve efficiency <p><i>Road Transport:</i></p> <ul style="list-style-type: none"> ✓ Provide access and linkage, between county Headquarters.
		An urban transport policy that facilitates an integrated, balanced and environmentally sound urban transport system	<ul style="list-style-type: none"> ✓ Incorporate an integrated transport network in county and urban development plans ✓ Plan and develop satellite towns to complement and decongest major urban areas ✓ Develop a public transport policy to regulate planning and management of public transport Promote the use of green energy in all transportation systems.
		An efficient and affordable Mass Public Transport for all urban areas in the country shall be developed	<ul style="list-style-type: none"> ✓ Provide public transport system for the principal towns of Samburu ✓ Adopt transit-oriented development in the

			<p>planning and development of all public urban transport</p> <ul style="list-style-type: none"> ✓ Design and develop integrated transport networks ✓ Establish a comprehensive transport management information system for all transport modes
8.	Providing Appropriate Infrastructure	Safe, adequate, reliable and affordable electricity for both urban and rural settlements shall be provided	<ul style="list-style-type: none"> ✓ Tap into 630 MW wind energy in areas with high speed such as West Pokot ✓ Mainstream and enforce green energy options in the design of buildings ✓ Support the flagship projects that are geared towards increasing electricity supply from both renewable and non-renewable sources
		Expansion and improvement of water reticulation systems to facilitate the access to clean, safe, adequate, reliable and affordable water in human settlements shall be promoted	<ul style="list-style-type: none"> ✓ Construct and rehabilitate water supply systems in the ASAL counties ✓ Incorporate water provision in all physical development plans. ✓ Restore all the water towers ie Cherangani Hills
		A globally competitive, accessible and affordable higher education, training and research facilities shall be promoted	<ul style="list-style-type: none"> ✓ Develop and upgrade physical infrastructure in all higher education institutions to increase their capacity ✓ Mainstream ICT in Education facilities
		A network of functional, efficient, safe, accessible and sustainable national health referral infrastructure shall be established	<ul style="list-style-type: none"> ✓ Increase the utilization of services at lower levels of the health services ✓ Improve preparedness and response to emergencies and disasters ✓ Modernization of infrastructure and hospital equipment at Samburu County Hospital
		Appropriate, quality, efficient and cost-effective ICT	<ul style="list-style-type: none"> ✓ Promote the development and upgrading of ICT Infrastructure

		infrastructure in both rural and urban areas shall be promoted	<ul style="list-style-type: none"> ✓ Mainstream use of ICT in all levels of government and the private sector (e-government)
		The expansion of sewerage systems and waste management facilities shall be promoted to improve sanitation in human settlements	<ul style="list-style-type: none"> ✓ Service all urban settlements by a centralized sewerage treatment system and solid waste disposal facilities ✓ Apply appropriate technology solutions to sewerage and waste treatment ✓ All spatial plans to make provision for development of sewer systems and treatment works and solid waste disposal sites ✓ Enactment of laws at County levels to incorporate private public partnerships in infrastructure investments ✓ Undertake rehabilitation of storm water drainage systems in all urban areas
		Sporting infrastructure shall be planned, developed, maintained and the existing rehabilitated to promote sports development	<ul style="list-style-type: none"> ✓ Establish County Sports Talent Centers ✓ Rehabilitate county stadia to international standards
9.	Towards a Rapidly Industrializing Nation	<ul style="list-style-type: none"> ✓ The cluster development strategy shall be promoted to focus on proximity to raw materials and markets of region-specific products ✓ Specific sites for industrial development shall be identified, planned and serviced with the appropriate infrastructure 	<ul style="list-style-type: none"> ✓ Prepare and implement an industrial master plan ✓ Promote value addition in processing of local produce ✓ Integrate the industrialization process and environment conservation ✓ Provide an integrated, efficient, reliable and sustainable transport and energy infrastructure ✓ Adopt renewable energy generation programmes ✓ Promote the adoption of energy efficient technologies to lower the demand for energy

		✓ Adequate and affordable energy supply for the industrial sector shall be provided	
--	--	---	--

DRAFT



Source: Department of Physical Planning, 2022

5 IMPLEMENTATION OF THE NSP GUIDELINES

5.1 Introduction

The implementation framework identifies activities and further ties them with responsible actors, resources and timeframes adequate for their execution. It constitutes a deliberately established method, means or system of ensuring that the policies, strategies and measures outlined in the guidelines are continuously and consistently executed to achieve their objectives.

To effectively implement the guidelines, the various sectors, actors and levels of planning have been identified and have to work together and the mandate of the sectors at the National and County levels of planning have to be integrated.

5.2 Implementation Channels

The County Specific Guidelines will be implemented through various approaches including:

1. Preparation of spatial plans to integrate and conform to the proposals of the County Guidelines. The plans include:
 - Inter-County Physical and Land Use Development Plans for Metropolitan regions, conservation zones, river basins, water towers, coastal ecosystems, trans-boundary resource areas and transport corridors, among others.
 - County Physical and Land Use Development Plans.
 - Local Physical and Land Use Development plans for Cities, Urban areas, special area plans, subject plans and detailed neighbourhood plans, among others.
 - Sectoral plans
2. Integration of the guideline policies, strategies and measures into the County sector plans, programs and projects. Ministries, Departments and Agencies (MDAs), County and National Departments identified in the plan to administer the policies, strategies and measures are required to translate them into action plans, programmes and projects and to include them in their subsequent sector plans.

5.3 Implementation Framework

The implementation of the various policies, strategies, measures, programmes and projects under these Guidelines will involve a wide range of actors. It will require a coordinated approach and partnership between the National and County Governments and non-state actors. It may require re-engineering of institutions and a number of actors to undertake the implementation through a harmonized approach.

The National Spatial Plan identified a multi-leveled framework for implementation of the plan that incorporates all levels of actors. In this regard, the institutions identified in the NSP to undertake implementation of the plan at County-level shall also be mandated to ensure implementation of this Guidelines.

The following are the Institutions mandated to ensure implementation of the County Specific guidelines;

5.3.1 County Physical Planning Committee

The role of the County Planning Committee shall be to ensure aspirations of the guidelines are articulated in preparation of the County Spatial Plans, County Integrated Development Plans and Local Physical and Land Use Development Plans.

The composition of this committee consists of;

- i. The Governor who will be the Chairperson,
- ii. the Deputy Governor,
- iii. the County Executive Committee Members from various sectors
- iv. Directors from various relevant County Departments including Lands and Physical Planning, Economic planning, Agriculture, Industrialization, Tourism, Environment, Transport and Infrastructure

The functions of the committee include;

- 1) To promote effective integration between physical, economic and sectoral planning within the framework of county development policies.
- 2) To provide policy guidance for the implementation of strategic spatial projects

- 3) To ensure that the guidelines policies and measures are mainstreamed in the various county plans.
- 4) To mobilize resource for implementation of the Guidelines.

5.3.2 County Planning Unit (CPU)

The technical Unit shall provide technical support to the various implementing County departments on issues relating to physical planning.

The CPU shall;

- i. Monitor the Implementation of the guidelines.
- ii. To disseminate components of the guidelines to the various county departments.
- iii. Update the County Physical Planning Committee on a regular basis on the implementation of the guidelines.

The County Director of Physical Planning shall be responsible for preparation of an annual state of planning report which shall among other things appraise the status of implementation of the guidelines.

5.3.3 National Land Commission

The National Land Commission shall play its oversight role in land use planning to ensure efficient implementation of the NSP and the guidelines. Other functions of the Commission in the implementation of the NSP and the guidelines include the following: - To formulate mechanisms and parameters for monitoring and overseeing land use planning.

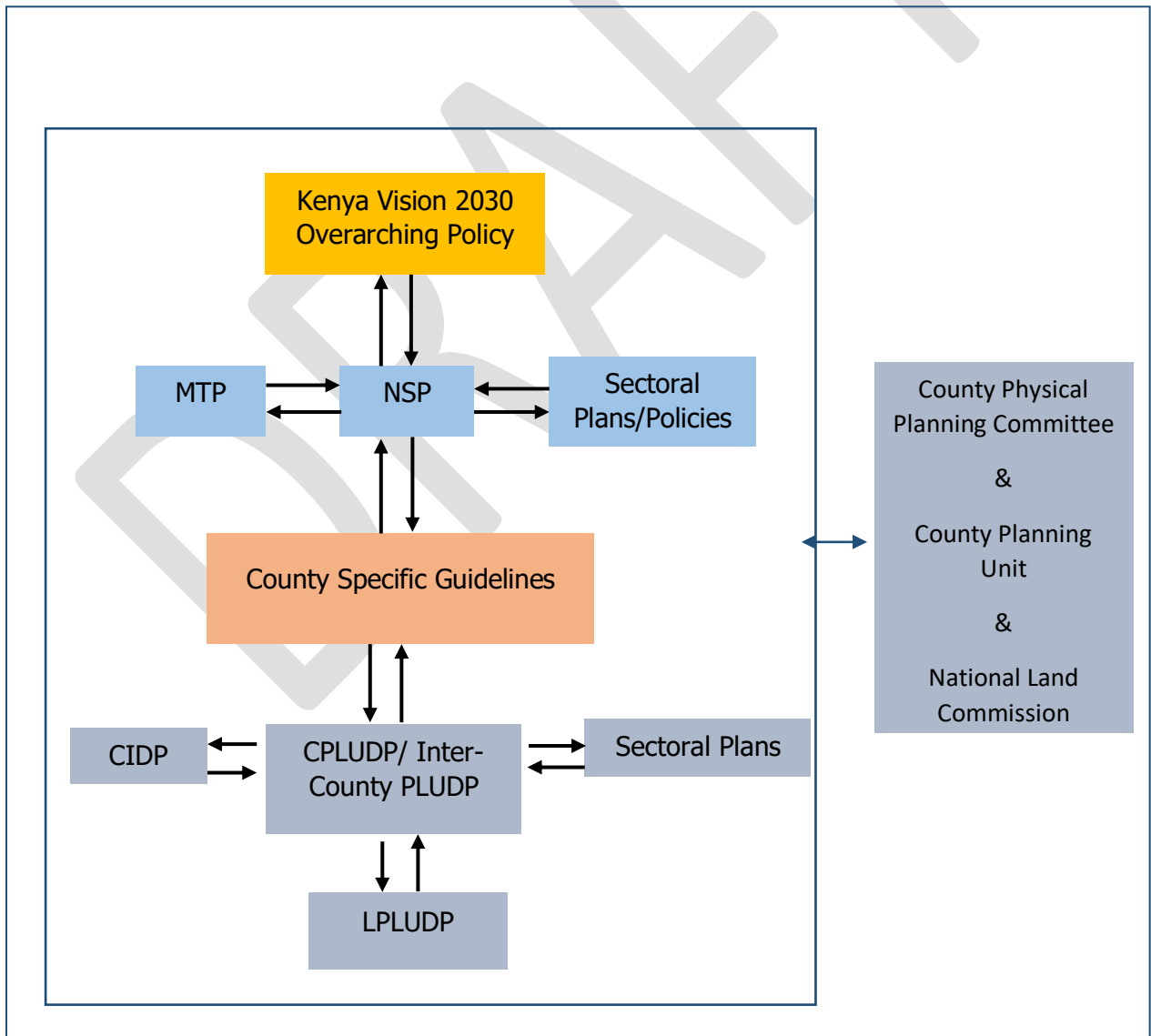
- i. To ensure that relevant planning authorities carry out their functions as required by law.
- ii. To make recommendations for improvements of the planning systems in the county.
- iii. To mobilize resources to support physical/land use planning.

5.4 Monitoring and Evaluation

Implementation of the guidelines will be monitored and evaluated to measure both outputs and outcomes and ensure that the intended actions are implemented in a timely manner. To facilitate attainment of the objectives of the guidelines, performance indicators will be developed by the County Physical Planning Department for efficient monitoring. Periodic reports will be prepared in relation to progress being made in their implementation.

The graphic below illustrates the implementation structure for County Specific guidelines.

Figure:2 NSP Implementation Organization Structure



Source: State Department for Physical Planning, 2022

5.5 Conclusion

The application of these guidelines will be undertaken by a number of actors and hence the need for a coordinated approach. The lead agency will be West Pokot County Government which will be responsible for implementing various county specific initiatives proposed by the guidelines.

The National Government, County Government of West Pokot, the private sector and the general public will be critical in actualizing the objectives of these guidelines. The County Physical Planning Committee shall develop a communication strategy to enhance the synergies.

The National Department of Physical Planning shall undertake sensitization, training and capacity building of the County Government and National Government institutions and agencies that will be involved in the implementation of these guidelines. Special attention will be given to the County physical planning units, as they will be expected to provide technical expertise in the implementation of the County specific policies and strategies.